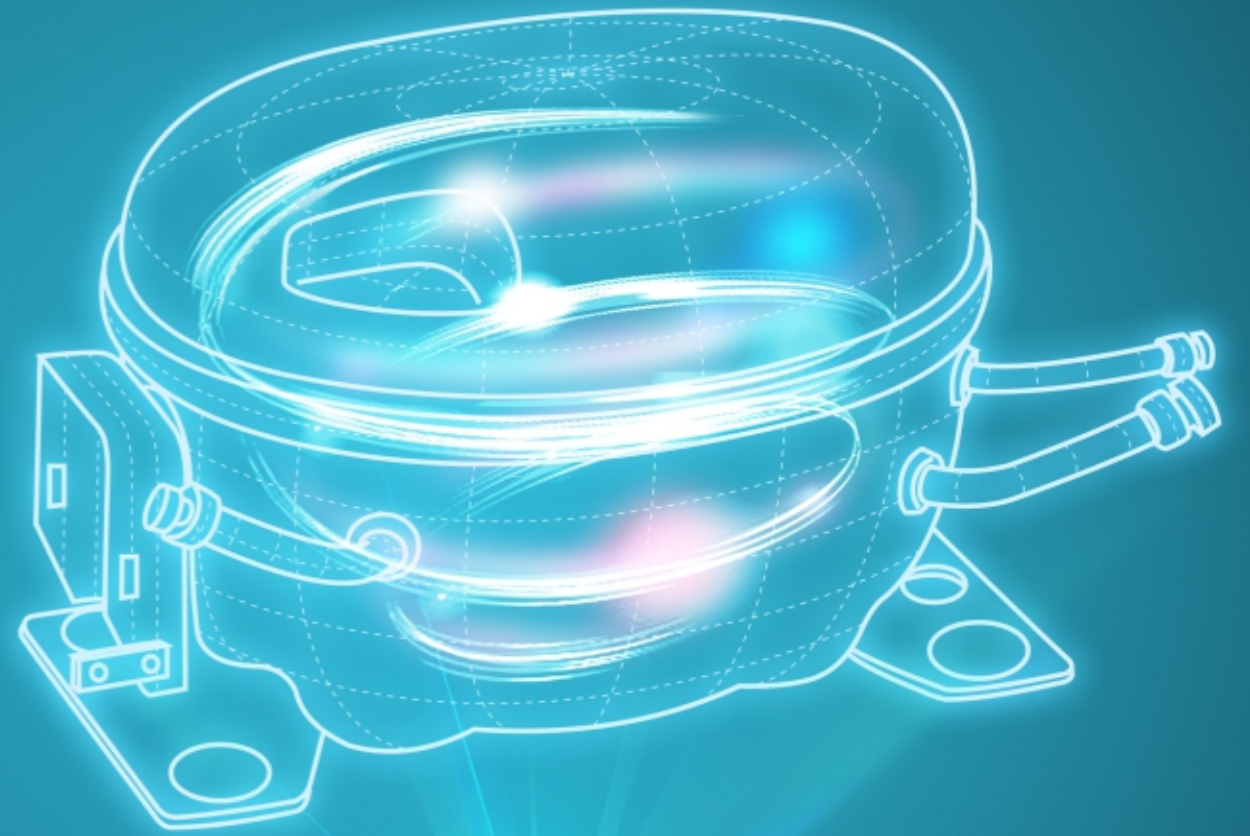


# GMCC

用芯创造未来



## 往复式压缩机

产品手册

# RECIP COMPRESSOR

# 2018

本手册印刷于2017年12月，欲了解最新产品技术信息，请访问GMCC官方网站：www.gmcc-welling.com  
This manual was printed in Dec. 2017. For technical details about the latest products, please visit GMCC website: www.gmcc-welling.com

**GMCC**  
Create Future With Core

本资料相关技术数据仅供参考，实际数据以我司最新的产品规格书为准  
The data of this catalog is for reference only, the actual data is subject to the latest specification document  
品牌整合推广：川上（中国）品牌管理有限公司 020-34354269

 环保纸张  
可回收资源  
Recyclable  
Made From Recycled Content



# CONTENTS

## 目录



01	公司简介 COMPANY PROFILE	16	产品性能参数 PRODUCT PERFORMANCE AND PARAMETERS
03	绿色里程 GREEN MILE	34	外形图 OUTLINE DRAWING OF COMPRESSOR
05	绿色科技 GREEN TECHNOLOGY	36	附件安装图 INSTALLATION OF ACCESSORIES
07	智能制造 SMART MANUFACTURE	37	电气接线图 ELECTRIC WIRING DIAGRAM
09	绿色潜能 GREEN POTENTIALS	38	压缩机包装 COMPRESSOR PACKING
11	品牌影响力 BRAND INFLUENCE	39	一般技术说明 GENERAL TECHNICAL DESCRIPTION
13	产品系列介绍 INTRODUCTION TO PRODUCT SERIES	40	联系我们 CONTACT US
15	产品命名规则及测试工况 PRODUCT NAMING RULES AND TESTING CONDITIONS		



# COMPANY PROFILE

## 公司简介



### 我们的企业

Company

GMCC于1995年创建于广东顺德，是一家专业化研发、生产、销售旋转式、往复式等冷冻冷藏、环境空气调节用压缩机的精密制造企业；

Founded in 1995, GMCC is a precision manufacturing company engaged in R&D, production and sales of rotary compressor and reciprocating compressor for cold storage and air conditioning.

### 我们的产品应用

Product

产品被广泛应用于各类空调、冰箱、冷柜、热泵热水器、抽湿机、干衣机、冷藏汽车、饮水机设备等领域；

The products are applied widely to air conditioners, refrigerators, refrigerated cabinets, heat-pump water-heaters, dehumidifiers, dryers, refrigerated trucks, water dispensing equipment, etc.

### 我们的体系

Market

GMCC在全球拥有四大研发试验中心，四个工厂；2017冷年产销空调压缩机5800万台、冰箱压缩机2000万台。其中，空调压缩机全球市场占有率第一，市场份额超过30%。

Four R&D centers and four plants around the globe, GMCC achieved production and sales of 58 million sets of A/C compressor and 20 million sets of refrigerator compressor in 2017 refrigeration year, among which, A/C compressor wins the highest global market share that exceeds 30%.

### 四大研发试验中心，已获得共1564项专利

4 R&D centers, 1564 patents



顺德 Shunde

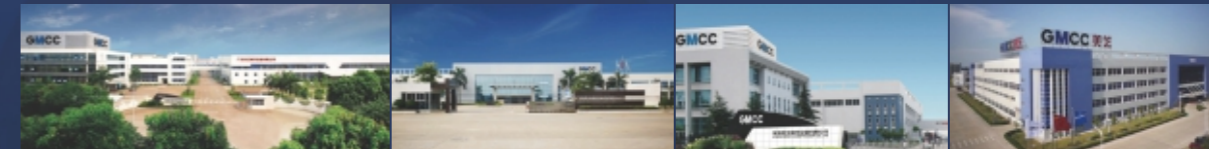
合肥 Hefei

印度 India

欧洲 Europe

### 4个智能工厂，400多台工业机器人

4 intelligent factories, 400+ industrial robots



广东顺德（大良）  
Shunde, Guangdong

广东顺德（容桂）  
Shunde, Guangdong

安徽合肥  
Hefei, Anhui

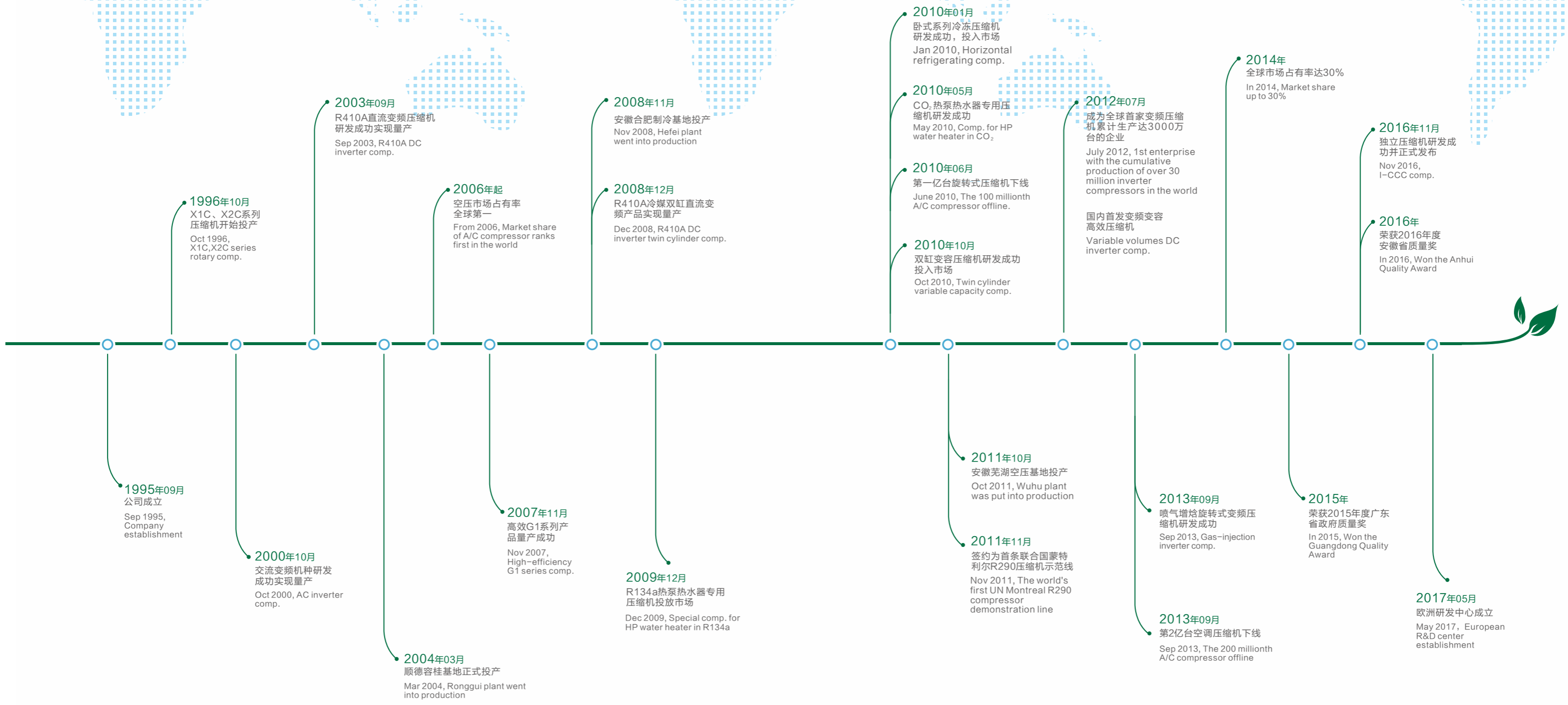
安徽芜湖  
Wuhu, Anhui

\*相关数据源于“产业在线”统计  
Relevant data from statistics of China IOL

# GMCC

# GREEN MILE

## 绿色里程





# GREEN TECHNOLOGY

## 绿色科技

GMCC产品能效每年提升3%，为世界各地提供高效、节能、环保、低噪的绿色压缩机动力核心。

With energy efficiency of GMCC products improved by 3% every year, GMCC provides customers worldwide with high-efficiency, eco-friendly, and low-noise green compressor cores.

### 创新驱动

Innovation Driven

为保持核心科技竞争力，GMCC持续投入大量科研资源，其研发测试中心配备了400多套价值超过2亿元的全套实验测试分析系统和实验室，通过国家实验室认证和UL CTDP认证。

In order to maintain its core technologic competitiveness, GMCC continues to invest a large amount of resources to scientific research. Its R&D testing center is equipped with more than 400 sets of experimental test and analysis systems and laboratories worth over 200 million Yuan. The center is both CNAS and UL CTDP certificated.

### 技术路线

Technical Route

GMCC坚持绿色科技路线，不断在环保、高效、小型、智能和静音等方面进行技术研发和产品升级。与10年前相比，GMCC压缩机如今的能效提升超过10%，每年可节省50亿度电，相当于1/9个大亚湾核电站。

Persisting in green technologic route, GMCC continues to develop and upgrade its products regarding eco-friendliness, efficiency, size, intelligence and noise. Compared with products 10 years ago, the energy efficiency of present GMCC compressors has been improved by more than 10%, and 5 billion kilowatt hour can be saved each year which is equal to 1/9 of the energy generated by Daya Bay Nuclear Power Plant.

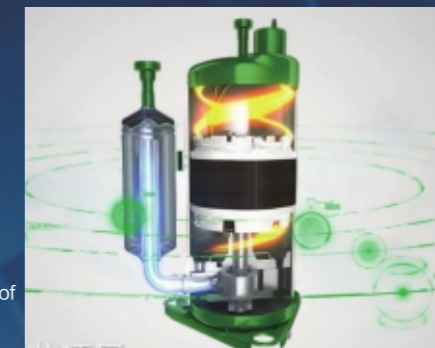


### 绿色芯

Green Core

GMCC始终坚持研究环保冷媒应用，近十年来先后率先推出R407C、R410A、CO<sub>2</sub>、R290和R32等环保冷媒压缩机产品。其R290压缩机联合国示范生产线已于2014年底成功验收，正为世界各地量产型谱全面、应用广泛的R290压缩机。

GMCC has long been involved in research and application of environment-friendly refrigerants, and has successively released the first compressor products featuring R407C, R410A, CO<sub>2</sub>, R290, R32 and other green refrigerants in the past decade. Its United Nations exemplary R290 compressor production line passed acceptance inspection at the end of 2014, and is now producing widely-used R290 compressors of various types and models in large volumes for customers from all over the world.



### 智慧芯

Wisdom Core

早在2003年，GMCC就推出了R410A直流变频压缩机。近年来，GMCC不断创新研发节能变频技术，先后推出双缸变频、变频变容、喷气增焐、全能耦合和独立压缩等新品，为空调行业的变频化发展不断贡献力量。

GMCC launched the first R410A DC inverter compressor as early as 2003. In recent years, thanks to its consistent efforts in innovation and R&D on energy-saving inverter technologies, GMCC has successively rolled out new products featuring technologies such as double-cylinder frequency conversion, variable frequency and capacitance, enhanced vapor injection, all-round coupling, independent compression, etc., and in this way, GMCC has been constantly making its contribution to the popularization of frequency conversion technologies in the air conditioning industry.



### 鲜活芯

Fresh Core

在绿色节能大潮流下，冰箱压缩机行业呈现出高效化、小型化和节能化等技术发展趋势。通过持续的研发创新投入，GMCC自主开发出E、K及变频产品系列，并于2013年推出全铝线冰箱压缩机，助力产业绿色科技发展。

Under the trend of green energy saving, the refrigerator compressor industry presents the development trend of high efficiency, miniaturization and energy saving, etc. Through continuous research and innovation input, GMCC independently developed E, K and frequency conversion products, as well as launched a refrigerator compressor of full aluminum wires in 2013, to boost the development of green science and technology.





# SMART MANUFACTURE

## 智能制造

不断提高精益制造水平，创新生产工艺，打造智能工厂，GMCC生产效率每年提升10%以上

With continuous increased refined manufacturing level, innovative production process, and intelligent plant, GMCC's production efficiency gets more than 10% improvement each year.

### (一) 信息化

一体化精益信息体系，全面支撑业务。GMCC 建成以计划驱动、采购协同、物流配送、制造执行的闭环制造协同体系，初步实现集成化、可视化、信息化的敏捷型数字工厂，产品交期、库存和操作人员大幅减少。

#### (A) Informatization

An integral lean information system lays a solid foundation for GMCC's entire business. GMCC has constructed a closed-loop manufacturing collaboration system featuring plan driving, purchase synergy, logistic coordination and manufacturing execution, and achieved a prototype of an agile digital factory boasting integration, visualization and informatization, thereby significantly reducing product delivery time, stock as well as the number of operators.



### (二) 自动化

GMCC规模化应用人机交互作业，以RGV代替人工推送物料，视觉CGV代替人工识别，通过物流自动化、生产自动化和检测自动化，在压缩机生产中完成了自动化系统突破，使GMCC在规模、效率、品质、成本等各方面获得更大提升。

#### (B) Automation

GMCC applies man-machine interactive operation in large scale. With manual material pushing replaced by RGV, manual recognition replaced by visual CGV, and logistics/production/test automated, compressor production becomes automated, and GMCC scale, efficiency, quality, and cost obtain significant improvement.



### (三) 品质管控

GMCC建立起了科学、准确、高效的产品检验体系，以保证产品的卓越品质。经过至少81道检验测试的磨练，通过2000小时以上持续运行的考察，GMCC产品的性能和品质得到了充分的验证，保障压缩机在恶劣工况下10年强劲运行。

#### (C) Quality control

GMCC builds a scientific, accurate, and efficient product inspection system to ensure product quality. With more than 81 tests and more than 2000h continuous running, GMCC product performance and quality get sufficient guarantee, ensuring that the compressors can run 10 years long under extreme conditions.

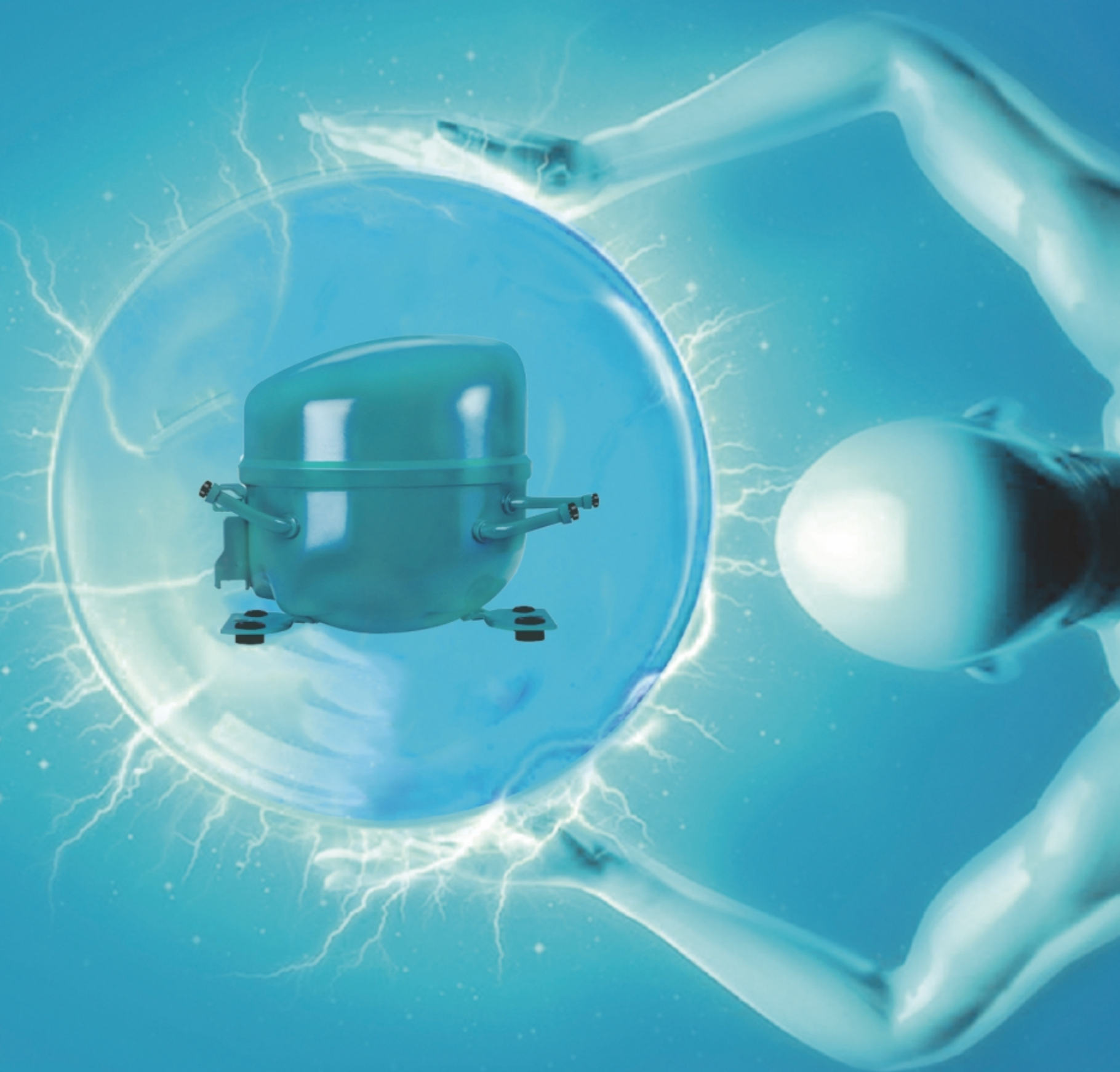


### (四) 节能减排

GMCC建立了完善的能源管理制度，将能源消耗指标纳入部门考核中。通过中水回用、中央空调节能改造、生物质锅炉节能改造、空压机集成控制改造、中外炉余热利用改造等项目，年动力费单耗下降2%。

#### (D) Energy saving and emission reduction

GMCC has established perfect energy management systems, and the energy consumption indices are integrated to department check. GMCC promotes projects in production such as use of reclaimed water, energy-saving rebuilding of central air conditioning, energy-saving rebuilding of biomass boilers, rebuilding of compressor integration control, rebuilding of residual heat of boilers and so on. GMCC's yearly unit expenditure on power decreases by 2%.





# GREEN POTENTIALS

## 绿色潜能

GMCC坚持可持续发展和绿色发展，提升产品综合竞争力，与上下游合作伙伴携手激发产业链潜能。

GMCC persists in sustainable development and green development to improve comprehensive competitiveness of products and cooperates with upstream and downstream partners to stimulate potential energy of the industry chain.

### (一) 产学研智冷链

GMCC与国内外整机厂商、配套供应商、研究机构及高等院校等保持紧密交流，从理论分析、部品材料、系统设计和研发设备等方面深入协作，构建制冷产业链的产学研合作，输出群体智慧，全面开发和应用压缩机创新技术。

#### (A) Cold chain of production, university, research, and intelligence

GMCC maintains close exchanges with machine manufacturers, supporting suppliers, research institutes and colleges and universities both at home and abroad, implements in-depth cooperation in terms of theoretical analysis, parts and materials, system design and R&D equipment to build a production/university/research cooperation of the cooling industry, and outputs group wisdom to fully develop and apply compressor innovations.

### (二) 客户战略合作

GMCC构建客户导向型技术研发体系，积极与客户建立联合实验室，配套开发技术，推进快速投市。近年来，GMCC独立压缩技术、喷气增焓技术、R290和R32环保冷媒技术分别助力客户在绿色智能家电市场赢得先机。

#### (B) Strategic cooperation with customers

GMCC builds a customer-oriented technical R&D system and founds a laboratory with customers to quicken listing using the laboratory and supporting development technologies. In recent years, the independent compression technology of GMCC, jet enthalpy technology, and R290 and R32 eco-friendly refrigerant technology help customers win opportunities in the green and intelligent household appliances market.

### (三) 高价值供应链

GMCC强调产业链价值增值，与供应商深度合作，建立联合实验室，共同提高相关领域的技术水平及品质管控水平。同时，GMCC通过管理输出提升供应商能力，已实现从客户接单、计划排产、供应商备料到生产出货的产供销无缝衔接的数字化制造协同体系。

#### (C) High-value supply chain

GMCC attaches importance to the added value services of the industry chain, so it cooperates with suppliers to build a laboratory and improve technical levels and quality control levels in relevant fields. Furthermore, GMCC improves supplier capability by management output, and has implemented production/supply/sale seamless digitalized manufacturing coordination system covering from order placement and production planning to supplier material preparation and delivery.





# BRAND INFLUENCE

## 品牌影响力



GMCC坚持在全球制冷行业平台分享技术和产品，为世界家电提供节能、环保、高效、可靠的核芯部件。

GMCC always shares technologies and products through the global cooling industry platform, and provides the household industry with core components that are energy efficient, eco-friendly, efficient, and reliable.

### (一) 全球巡展

数年来持续以绿色创新、技术领先形象亮相的GMCC，已成为全球各大制冷展会的一道特色风景线。从中国出发，历经美国AHR、意大利MCE、德国CHILLVENTA、印度ACREX、泰国RHVAC和巴西FEBRAVA等全球重量级展会，GMCC品牌印记遍布全球。

#### (A) Global Tour

Over the past few years, GMCC has been continuing with a green innovative and technical leading image, and has become a unique landscape in different major refrigeration shows around the world. Starting from China, GMCC leaves its brand mark in heavyweight exhibitions all over the world, including American AHR, Italian MCE, Germanic CHILLVENTA, Indian ACREX, Thailand RHVAC, and Brazilian FEBRAVA.



### (二) 行业分享

作为行业技术先锋，GMCC近年来不断受邀成为国际天然制冷剂大会、亚洲制冷与空调大会、中国国家技术大会、中国制冷学术年会及中国国家电产业链大会等行业平台的协办单位，探讨行业技术发展方向，分享创新技术成果，推动行业技术升级。

#### (B) Industry Sharing

As a technologic pioneer in the industry, GMCC has been continuously invited in recent years as a co-organizer of the IIR-Gustav Lorentzen Conference on Natural Refrigerants, Asian Conference on Refrigeration and Air-Conditioning, China Household Appliances Technology Conference, Annual Meeting on Refrigeration of China, and Industrial Chain Conference on Household Appliances of China, discussing technical development direction of the industry, sharing technological achievements of innovations, and promoting technology upgrade of the industry.



### (三) 联合营销

GMCC与客户保持深度战略合作，进行联合市场营销，合作推广品牌和产品。2013年，GMCC开行业先河，推出空调压缩机“十年包换”品质服务政策；同年联合TCL推出“十年包换”落地服务，为彼此市场拓展和品牌形象带来重大价值。

#### (C) Joint Marketing

GMCC maintains in-depth strategic cooperation with its customers and conducts joint marketing to promote brands and products. In 2013, GMCC broken with precedent and launched its "10-year replacement" service policy for air-conditioning compressors. In the same year, GMCC cooperated with TCL to launch the "10-year replacement" door-to-door service, bringing significant value to mutual market expansion and brand image.





自主研发超高效产品系列，超高效、低噪音、低振动、冷量范围广、匹配性好。适用工质R600a、R134a、R290，制冷量覆盖80~140W，高效率电机及吸排气系统设计，冰箱工况COP最高可达到2.0，产品结构可靠、低噪音，可满足高效冰箱、冷柜、制冰机等需求。

This series are high-efficiency products independently developed by GMCC, using high-efficiency motor and suction and discharge system. Under refrigerator test condition, its maximum COP can reach 2.0, H series are characterized by solid structure, low noise, high-efficiency, which can meet the demands of refrigerator, freezer and ice-maker etc.

## H SERIES系列



## E SERIES系列

全新开发高效小型化产品系列，高可靠性设计，启动性能好，宽电压运行。适用工质R600a、R134a和R290，制冷量覆盖50~210W，产品最高COP达1.85，应用范围广，可满足不同国家地区的冰箱、冷柜产品需求。

This series are high-efficiency products with small size, which are newly developed by GMCC. E series are characterized by reliable structure, small size, low noise and easy starting, using refrigerant R600a, R134a and R290. Its maximum COP can reach 1.8. With wide range of application, E series can meet the demands of refrigerator and freezer in different countries.

自主研发微型压缩机产品系列，超小安装空间，性价比高、低噪音、低振动。适用工质R600a、R134a，制冷量覆盖范围50~140W，可满足饮水机、除湿机、小冰箱、小冷柜产品需求。

This series are mini-compressors independently developed by GMCC. C series are almost the smallest products among the current fridge compressors, which are characterized by high reliability, low noise, easy starting. Using refrigerant R600a and R134a, this series can meet the demands of water dispenser, dryer, small fridge and small freezer.

## C SERIES系列

## K SERIES系列

全新开发超小外形产品系列，转速范围更广，低噪音、低振动，适用工质R600a，制冷量覆盖范围40~220W。

This series are super small compressors independently developed by GMCC. C series are characterized by wider speed range, low noise and low vibration. Using refrigerant R600a, the cooling capacity range is from 40W to 220W.

## INTRODUCTION TO PRODUCT SERIES

# 产品系列介绍



## V SERIES系列

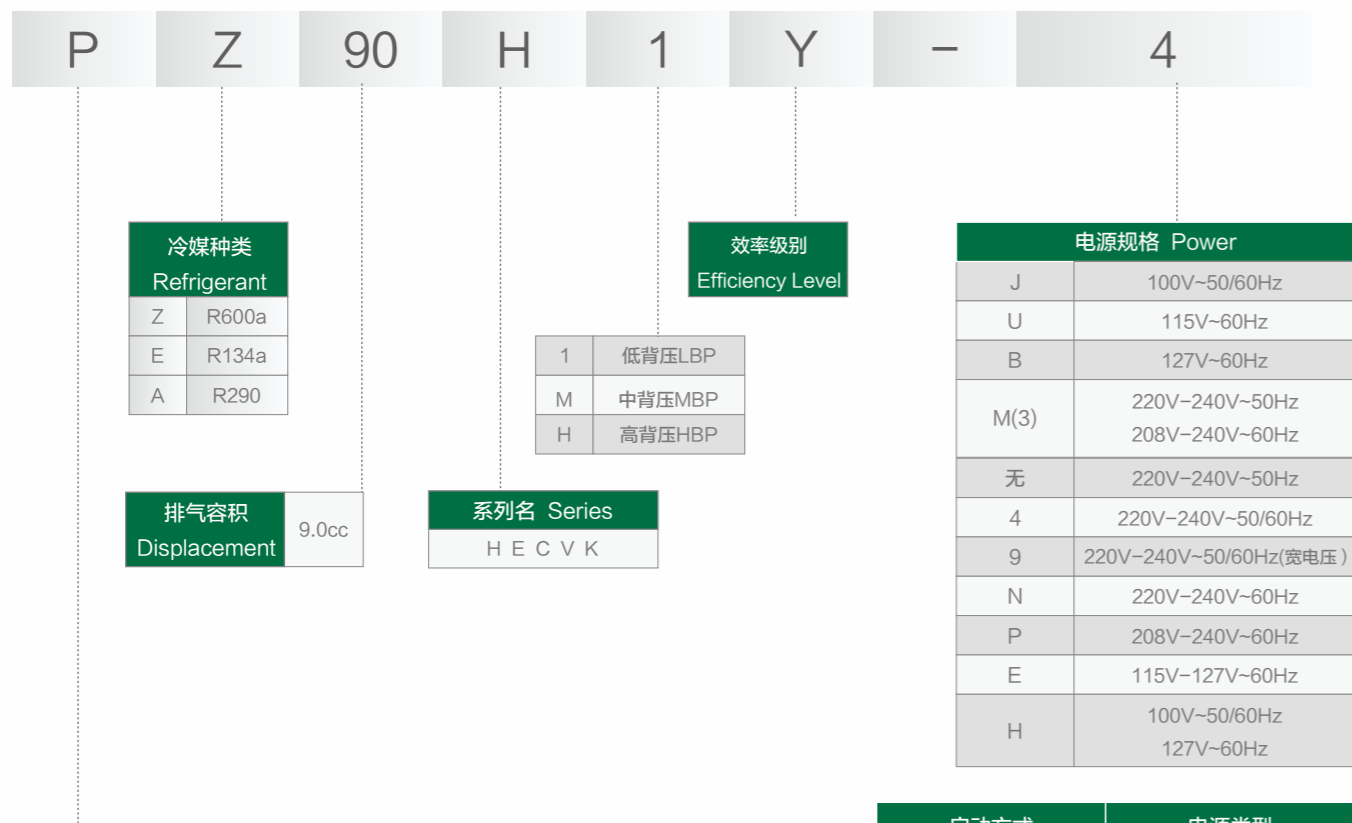
全新开发直流无刷变频系列，高可靠性、低噪音振动设计；全新低安装高度设计可使箱体利用率更高；先进的电机、电控设计，使其使用转速范围更广，过载能力更强、可靠性更高。适用工质R600a和R290，制冷量覆盖40~280W，产品排量范围从5.0~12.0cc/rev，最高效率达到2.05，可满足大容量高端节能产品的需求；同时中、低效产品性价比更高，可满足经济变频冰箱以及机械变频冰箱冷柜的使用。

Newly developed DC brushless inverter series, featuring high reliability, and low noise and vibration; new low mounting height design that improves cabinet utilization; advanced motor and electric control design that results in a wider RPM range, a higher overload capacity and higher reliability; working with refrigerants R600a & R290, with a displacement range of 5.0~12.0cc/rev and a highest energy efficiency of 2.05 to meet the demand for high capacity, high-end energy-saving products; improved performance-cost ratio for medium- and low-efficiency products for use with economical inverter refrigerators, and mechanical inverter refrigerators and refrigerated cabinets.



# 产品命名规则及测试工况

## 产品命名规则 PRODUCT NAMING RULES



## 测试工况 TESTING CONDITIONS

测试工况 Test Condition	低背压LBP ASHRAE	中背压MBP ASHRAE	高背压HBP ASHRAE
蒸发温度Evap.Temp.℃	-23.3	-6.7	7.2
环境温度Amb.Temp.℃	32.2	35	35
冷凝温度Cond.Temp.℃	54.4	54.4	54.4
吸气温度SuctionTemp.℃	32.2	35	35
过冷温度SubcoolingTemp.℃	32.2	46	46

### 单位换算 Conersion Table

- 1、W×3.412=Btu/h
- 2、W×0.864=kcal/h
- 3、kcal/h×1.163=W
- 4、kcal/h×3.968=Btu/h
- 5、EER=COP×3.412
- 6、Capacity(at 50HZ)×1.16=Capacity(at 60HZ)

# 产品性能参数

系列 Series	型号 Model	气缸容积 Displ (cm <sup>3</sup> )	冷却方式 Cooling Type	电机类型 Motor Type	电源频率 Power frequency	制冷量 Cooling Capacity (W)	性能系数 Coefficient of performance	认证 Certification	电机描述 Motor description	壳体高度 Shell height
-----------	----------	-------------------------------	-------------------	-----------------	----------------------	--------------------------	---------------------------------	------------------	------------------------	-------------------

## R600a LBP 变频 DC inverter

100V/220~240V/50Hz/60Hz

系列	型号	气缸容积	冷却方式	电机类型	电源频率	制冷量	性能系数	认证	电机描述	壳体高度		
V	DZ120V1U★	12.0	ST	BLDC		1320	86	1.95	---	Cu	145	
						1620	108	2.05				
						3000	210	1.90				
	DZ90V1U★	9.0	ST	BLDC			1320	69	1.95	---	Cu	145
							1620	88	2.05			
							3000	172	1.90			
	DZ120V1V	12.0	ST	BLDC			1320	86	1.95	CCC	Cu	145
							1620	108	1.98			
							3000	210	1.90			
	DZ90V1V★	9.0	ST	BLDC			1320	69	1.88	---	Cu	139
							1620	88	1.96			
							3000	172	1.90			
	DZ75V1V★	7.5	ST	BLDC			1320	57	1.96	---	Cu	139
							1620	70	1.96			
							3000	138	1.88			
	DZ59V1V★	5.9	ST	BLDC			1320	46	1.88	---	Cu	139
							1620	57	1.95			
							3000	105	1.88			
	DZ120V1Y	12.0	ST	BLDC			1320	86	1.85	CCC	Al	145
							1620	108	1.90			
							3000	210	1.85			
	DZ90V1Y	9.0	ST	BLDC			1320	69	1.85	CCC	Al	139
							1620	88	1.90			
							3000	172	1.85			
DZ75V1Y★	7.5	ST	BLDC			1320	53	1.80	---	Al	139	
						1620	68	1.85				
						3000	137	1.80				
DZ59V1Y★	5.9	ST	BLDC			1320	46	1.80	---	Al	139	
						1620	57	1.85				
						3000	105	1.80				
DZ120V1A	12.0	ST	BLDC			1320	86	1.78	CCC	Al	145	
						1620	108	1.84				
						3000	210	1.75				
DZ90V1A	9.0	ST	BLDC			1320	69	1.78	CCC、CB	Al	139	
						1620	88	1.84				
						3000	172	1.75				
DZ75V1A	7.5	ST	BLDC			1320	53	1.65	---	Al	139	
						1620	68	1.75				
						3000	137	1.70				
DZ59V1A	5.9	ST	BLDC			1320	46	1.65	---	Al	139	
						1620	57	1.75				
						3000	105	1.70				



系列 Series	型号 Model	气缸容积 Displ (cm <sup>3</sup> )	冷却方式 Cooling Type	电机类型 Motor Type	电源频率 Power frequency	制冷量 Cooling Capacity (W)	性能系数 Coefficient of performance	认证 Certification	电机描述 Motor description	壳体高度 Shell height
--------------	-------------	-------------------------------------	----------------------	--------------------	----------------------------	--------------------------------	---------------------------------------	---------------------	------------------------------	----------------------

### R600a LBP 变频 DC inverter

100V/220~240V/50Hz/60Hz

V	型号	气缸容积	冷却方式	电机类型	性能参数			认证	电机描述	壳体高度	
					电源频率	制冷量	性能系数				
V	DZ120V1D★	12.0	ST	BLDC	1320	86	1.65	---	AI	120	
					1620	108	1.75				
					3000	210	1.70				
					4320	265	1.65				
V	DZ90V1D★	9.0	ST	BLDC	1320	69	1.65	---	AI	120	
					1620	88	1.75				
					3000	172	1.70				
					4320	220	1.65				
K	DZ90K1C★	9.0	ST	BLDC	1320	65	1.60	---	AI	135	
					1620	80	1.70				
					3000	160	1.65				
					4320	208	1.60				
	K	DZ75K1C★	7.5	ST	BLDC	1320	60	1.60	---	AI	135
						1620	70	1.70			
						3000	135	1.65			
						4320	180	1.60			
	K	DZ59K1C★	5.9	ST	BLDC	1320	46	1.60	---	AL	135
						1620	57	1.70			
						3000	95	1.65			
						4320	148	1.60			
K	DZ90K1D★	9.0	ST	BLDC	1320	65	1.50	---	AI	130	
					1620	80	1.60				
					3000	160	1.55				
					4320	208	1.50				
K	DZ75K1D★	7.5	ST	BLDC	1320	60	1.50	---	AI	130	
					1620	70	1.60				
					3000	135	1.55				
					4320	180	1.50				
K	DZ59K1D★	5.9	ST	BLDC	1320	46	1.50	---	AI	130	
					1620	57	1.60				
					3000	95	1.55				
					4320	148	1.50				

### R290 LBP 变频 DC inverter

100V/220~240V/50Hz/60Hz

V	型号	气缸容积	冷却方式	电机类型	性能参数			认证	电机描述	壳体高度
					电源频率	制冷量	性能系数			
V	DA50V1Z	5.0	ST	BLDC	1200	98	1.78	---	Cu	145
					1620	135	1.85			
					3000	245	1.75			
					3900	315	1.68			
V	DA65V1B	6.5	ST	BLDC	1200	125	1.62	---	AI	145
					1620	175	1.70			
					3000	315	1.60			
					3900	405	1.52			



#### R600a 高效变频冰箱用压缩机 R600a INVERTER REFRIGERATOR COMPRESSOR

- 1、高效变频电机设计；
- 2、超宽电压和转速运行范围；
- 3、满足高端变频冰箱节能静音要求。

The efficient variable-frequency motors with ultra-wide range of voltage and rotating speed can meet the requirements for energy conservation and silence of high-end variable-frequency refrigerators.

### R600a LBP

220V-240V-50Hz

C	型号	气缸容积	冷却方式	电机类型	电源频率	制冷量	性能系数	认证	电机描述	壳体高度
C	PZ50C1E	5.0	ST	RSCR	220V~50Hz	80	1.55	----	AI	157
C	PZ55C1E	5.5	ST	RSCR	220V~50Hz	85	1.55	CCC/CB	AI	157
C	PZ59C1D	5.9	ST	RSCR	220V~50Hz	96	1.65	CCC/VDE	AI	157
C	PZ59C1E	5.9	ST	RSCR	220V~50Hz	96	1.62	CCC/VDE	AI	157
C	PZ59C1F	5.9	ST	RSCR	220V~50Hz	96	1.50	CCC/VDE /CB	AI	152
C	PZ70C1D	7.0	ST	RSCR	220V~50Hz	113	1.55	CCC	AI	157
C	SZ35C1K	3.5	ST	RSIR	220V~50Hz	50	1.35	----	AI	147
C	SZ40C1K	4.0	ST	RSIR	220V~50Hz	55	1.25	----	AI	147
C	SZ45C1K	4.5	ST	RSIR	220V~50Hz	70	1.27	CCC/VDE /CB	AI	147
C	SZ52C1M	5.2	ST	RSIR	220V~50Hz	81	1.25	----	AI	148
C	SZ55C1J	5.5	ST	RSIR	220V~50Hz	85	1.37	CCC/VDE /CB	AI	152
C	SZ55C1M	5.5	ST	RSIR	220V~50Hz	85	1.18	----	AI	142
C	SZ59C1H	5.9	ST	RSIR	220V~50Hz	96	1.42	CCC	AI	157
C	SZ59C1J	5.9	ST	RSIR	220V~50Hz	96	1.40	CCC/VDE /CB	AI	152
C	SZ70C1H	7.0	ST	RSIR	220V~50Hz	113	1.35	----	AI	157
C	SZ75C1J	7.5	ST	RSIR	220V~50Hz	120	1.35	----	AI	157
C	SZ80C1H	8.0	ST	RSIR	220V~50Hz	135	1.30	----	AI	157
E	PZ35E1G	3.5	ST	RSCR	220V~50Hz	50	1.45	----	AI	164
E	PZ40E1C	4.0	ST	RSCR	220V~50Hz	60	1.63	VDE/CB	AI	169
E	PZ45E1C	4.5	ST	RSCR	220V~50Hz	71	1.65	CCC/VDE /CB	AI	169
E	PZ50E1B	5.0	ST	RSCR	220V~50Hz	82	1.73	CCC/VDE /CB	AI	174
E	PZ59E1Y	5.9	ST	RSCR	220V~50Hz	99	1.85	CCC	AI	178
E	PZ59E1Z	5.9	ST	RSCR	220V~50Hz	98	1.76	CCC/VDE /CB	AI	178
E	PZ59E1A	5.9	ST	RSCR	220V~50Hz	99	1.73	CCC/VDE /CB	AI	178
E	PZ59E1B	5.9	ST	RSCR	220V~50Hz	94	1.68	CCC/VDE /CB	AI	174
E	PZ59E1C	5.9	ST	RSCR	220V~50Hz	96	1.54	CCC/VDE	AI	164



系列 Series	型号 Model	气缸容积 Displ (cm <sup>3</sup> )	冷却方式 Cooling Type	电机类型 Motor Type	电源频率 Power frequency	制冷量 Cooling Capacity (W)	性能系数 Coefficient of performance	认证 Certification	电机描述 Motor description	壳体高度 Shell height	系列 Series	型号 Model	气缸容积 Displ (cm <sup>3</sup> )	冷却方式 Cooling Type	电机类型 Motor Type	电源频率 Power frequency	制冷量 Cooling Capacity (W)	性能系数 Coefficient of performance	认证 Certification	电机描述 Motor description	壳体高度 Shell height
--------------	-------------	-------------------------------------	----------------------	--------------------	----------------------------	--------------------------------	---------------------------------------	---------------------	------------------------------	----------------------	--------------	-------------	-------------------------------------	----------------------	--------------------	----------------------------	--------------------------------	---------------------------------------	---------------------	------------------------------	----------------------

R600a LBP

220V-240V-50Hz

E	PZ59E1E	5.9	ST	RSCR	220V-50Hz	95	1.60	CCC	Al	164
	PZ59E1F	5.9	ST	RSCR	220V-50Hz	95	1.55	CCC	Al	164
	PZ65E1A	6.5	ST	RSCR	220V-50Hz	116	1.75	CCC/VDE	Al	169
	PZ65E1B	6.5	ST	RSCR	220V-50Hz	116	1.67	CCC/VDE	Al	169
	PZ65E1Z	6.5	ST	RSCR	220V-50Hz	116	1.78	----	Al	169
	PZ70E1A	7.0	ST	RSCR	220V-50Hz	122	1.75	CCC	Al	174
	PZ70E1B	7.0	ST	RSCR	220V-50Hz	122	1.76	----	Al	178
	PZ70E1C	7.0	ST	RSCR	220V-50Hz	120	1.60	CCC	Al	164
	PZ70E1D	7.0	ST	RSCR	220V-50Hz	120	1.60	CCC	Al	169
	PZ70E1H	7.0	ST	RSCR	220V-50Hz	120	1.48	CCC/VDE	Al	164
	PZ70E1Y	7.0	ST	RSCR	220V-50Hz	120	1.85	----	Al	178
	PZ70E1Z	7.0	ST	RSCR	220V-50Hz	120	1.82	----	Al	178
	PZ75E1Y	7.5	ST	RSCR	220V-50Hz	137	1.85	----	Al	178
	PZ75E1Z	7.5	ST	RSCR	220V-50Hz	140	1.75	----	Al	178
	PZ75E1B	7.5	ST	RSCR	220V-50Hz	135	1.70	CCC/VDE	Al	174
	PZ80E1Z	8.0	ST	RSCR	220V-50Hz	148	1.78	----	Al	178
	PZ80E1A	8.0	ST	RSCR	220V-50Hz	147	1.73	CCC/VDE	Al	174
	PZ80E1C	8.0	ST	RSCR	220V-50Hz	147	1.65	CCC/VDE	Al	169
	PZ80E1D	8.0	ST	RSCR	220V-50Hz	142	1.60	CCC/VDE	Al	164
	PZ80E1F	8.0	ST	RSCR	220V-50Hz	137	1.53	CCC/VDE	Al	164
PZ85E1A	8.5	ST	RSCR	220V-50Hz	155	1.74	----	Al	178	
PZ85E1C	8.5	ST	RSCR	220V-50Hz	155	1.65	CCC/VDE	Al	174	
PZ90E1Z	9.0	ST	RSCR	220V-50Hz	164	1.78	CCC	Al	178	
PZ90E1A	9.0	ST	RSCR	220V-50Hz	165	1.73	CCC/VDE /CB	Al	178	
PZ90E1B	9.0	ST	RSCR	220V-50Hz	165	1.68	CCC/VDE	Al	174	
PZ90E1C	9.0	ST	RSCR	220V-50Hz	165	1.65	CCC/VDE /CB	Al	174	
PZ99E1Z	9.9	ST	RSCR	220V-50Hz	179	1.78	----	Al	178	

R600a LBP

220V-240V-50Hz

E	PZ120E1D	12.0	ST	RSCR	220V-50Hz	200	1.59	----	Al	178
	SZ45E1K	4.5	ST	RSIR	220V-50Hz	70	1.27	CCC/VDE /CB	Al	159
	SZ59E1HL	5.9	ST	RSIR	220V-50Hz	95	1.52	CCC/VDE	Al	169
	SZ59E1J	5.9	ST	RSIR	220V-50Hz	95	1.35	CCC	Al	159
	SZ70E1H	7.0	ST	RSIR	220V-50Hz	120	1.37	CCC	Al	159
	SZ80E1H	8.0	ST	RSIR	220V-50Hz	137	1.43	CCC/VDE	Al	164
	SZ85E1H	8.5	ST	RSIR	220V-50Hz	155	1.45	----	Al	174
	SZ90E1H	9.0	ST	RSIR	220V-50Hz	162	1.45	CCC/VDE /CB	Al	169
	SZ99E1H	9.9	ST	RSIR	220V-50Hz	184	1.50	CCC/VDE	Al	174
	KZ45H1U	4.5	ST	CSR	220V-50Hz	77	1.90	----	Cu	178
KZ50H1U	5.0	ST	CSR	220V-50Hz	95	2.00	----	Cu	178	
KZ55H1U	5.5	ST	CSR	220V-50Hz	100	2.05	CCC	Cu	178	
KZ65H1U	6.5	ST	CSR	220V-50Hz	118	2.05	VDE	Cu	178	
KZ80H1U	8.0	ST	CSR	220V-50Hz	150	2.05	----	Cu	178	
PZ45H1X	4.5	ST	RSCR	220V-50Hz	80	1.90	----	Al	178	
PZ50H1W	5.0	ST	RSCR	220V-50Hz	85	1.96	VDE	Cu	178	
PZ50H1X	5.0	ST	RSCR	220V-50Hz	87	1.87	CCC/VDE	Al	178	
PZ55H1V	5.5	ST	RSCR	220V-50Hz	95	1.97	----	Cu	178	
PZ55H1W	5.5	ST	RSCR	220V-50Hz	95	1.97	CCC	Al	178	
PZ55H1X	5.5	ST	RSCR	220V-50Hz	100	1.90	CCC/VDE	Al	178	
PZ59H1Y	5.9	ST	RSCR	220V-50Hz	100	1.85	CCC/VDE	Al	178	
PZ59H1Z	5.9	ST	RSCR	220V-50Hz	104	1.75	CCC	Cu	164	
PZ65H1B	6.5	ST	RSCR	220V-50Hz	117	1.72	CCC/VDE	Al	164	
PZ65H1V	6.5	ST	RSCR	220V-50Hz	117	2.00	----	Cu	178	
PZ65H1W	6.5	ST	RSCR	220V-50Hz	118	1.94	CCC	Cu	178	
PZ65H1X	6.5	ST	RSCR	220V-50Hz	118	1.88	CCC/VDE	Al	178	
PZ65H1Y	6.5	ST	RSCR	220V-50Hz	118	1.88	CCC/VDE	Al	178	



系列 Series	型号 Model	气缸容积 Displ (cm <sup>3</sup> )	冷却方式 Cooling Type	电机类型 Motor Type	电源频率 Power frequency	制冷量 Cooling Capacity (W)	性能系数 Coefficient of performance	认证 Certification	电机描述 Motor description	壳体高度 Shell height
--------------	-------------	-------------------------------------	----------------------	--------------------	----------------------------	--------------------------------	---------------------------------------	---------------------	------------------------------	----------------------

R600a LBP

220V-240V-50Hz

H	型号	气缸容积	冷却方式	电机类型	电源频率	制冷量	性能系数	认证	电机描述	壳体高度
	PZ65H1Z	6.5	ST	RSCR	220V-50Hz	116	1.83	CCC/VDE	Al	170
	PZ75H1C	7.5	ST	RSCR	220V-50Hz	137	1.70	CCC/VDE	Al	170
	PZ75H1W	7.5	ST	RSCR	220V-50Hz	137	1.95	CCC/VDE	Al	178
	PZ75H1X	7.5	ST	RSCR	220V-50Hz	137	1.87	CCC/VDE	Al	178
	PZ80H1V	8.0	ST	RSCR	220V-50Hz	150	1.97	----	Cu	178
	PZ80H1W	8.0	ST	RSCR	220V-50Hz	147	1.97	----	Cu	178
	PZ80H1X	8.0	ST	RSCR	220V-50Hz	147	1.92	----	Al	178
	PZ80H1Y	8.0	ST	RSCR	220V-50Hz	150	1.85	CCC/VDE	Al	170
	PZ80H1Z	8.0	ST	RSCR	220V-50Hz	152	1.80	----	Al	178
	PZ85H1B	8.5	ST	RSCR	220V-50Hz	165	1.70	CCC/VDE	Al	170
	PZ85H1H	8.5	ST	RSCR	220V-50Hz	165	1.55	CCC/VDE	Al	164
	PZ85H1X	8.5	ST	RSCR	220V-50Hz	165	1.90	VDE	Al	178
	PZ90H1U	9.0	ST	RSCR	220V-50Hz	170	1.95	----	Cu	178
	PZ90H1W	9.0	ST	RSCR	220V-50Hz	170	1.94	----	Cu	178
	PZ90H1X	9.0	ST	RSCR	220V-50Hz	170	1.90	CCC/VDE	Cu	178
	PZ90H1Y	9.0	ST	RSCR	220V-50Hz	170	1.88	CCC/VDE	Al	178
	PZ90H1Z	9.0	ST	RSCR	220V-50Hz	170	1.78	CCC/VDE	Al	170
	PZ90H1C	9.0	ST	RSCR	220V-50Hz	170	1.68	CCC/VDE	Al	170
	PZ99H1X	9.9	ST	RSCR	220V-50Hz	185	1.90	CCC	Cu	178
PZ99H1Y	9.9	ST	RSCR	220V-50Hz	185	1.88	CCC/VDE	Al	178	
PZ99H1Z	9.9	ST	RSCR	220V-50Hz	185	1.83	----	Al	178	
PZ99H1C	9.9	ST	RSCR	220V-50Hz	185	1.65	CCC/VDE	Al	170	
PZ110H1W	11.0	ST	RSCR	220V-50Hz	193	1.92	CCC/VDE	Cu	178	
PZ110H1Y	11.0	ST	RSCR	220V-50Hz	193	1.85	CCC/VDE	Al	178	
PZ110H1A	11.0	ST	RSCR	220V-50Hz	193	1.79	CCC/VDE	Al	178	
PZ110H1D	11.0	ST	RSCR	220V-50Hz	193	1.62	CCC/VDE	Al	178	
PZ120H1W	12.0	ST	RSCR	220V-50Hz	210	1.92	----	Cu	178	

R600a LBP

220V-240V-50Hz

H	型号	气缸容积	冷却方式	电机类型	电源频率	制冷量	性能系数	认证	电机描述	壳体高度
	PZ120H1Y	12.0	ST	RSCR	220V-50Hz	210	1.85	CCC/VDE	Al	178
	PZ120H1A	12.0	ST	RSCR	220V-50Hz	210	1.75	CCC/VDE	Al	178
	PZ130H1C	13.0	ST	RSCR	220V-50Hz	230	1.74	----	Al	187
	PZ130H1D	13.0	ST	RSCR	220V-50Hz	230	1.62	VDE	Al	187
	PZ130H1X	13.0	ST	RSCR	220V-50Hz	236	1.88	CCC	Cu	178
	PZ130H1Y	13.0	ST	RSCR	220V-50Hz	230	1.85	CCC/VDE	Cu	187
	PZ140H1Y	14.0	ST	RSCR	220V-50Hz	245	1.85	----	Cu	187
	PZ150H1A	15.0	ST	RSCR	220V-50Hz	265	1.74	----	Cu	187
	PZ150H1D	15.0	ST	RSCR	220V-50Hz	270	1.60	CCC	Al	187
	PZ150H1Z	15.0	ST	RSCR	220V-50Hz	270	1.83	----	Cu	187
	SZ80H1H	8.0	ST	RSIR	220V-50Hz	148	1.45	----	Al	170
	SZ99H1H	9.9	ST	RSIR	220V-50Hz	185	1.49	CCC/VDE	Al	170

R600a LBP

115V-60Hz

C	型号	气缸容积	冷却方式	电机类型	电源频率	制冷量	性能系数	认证	电机描述	壳体高度
	FZ35C1M-U	3.5	ST	RSIR	115V-60Hz	65	1.25	UL	Al	141
	FZ40C1G-U	4.0	ST	RSIR	115V-60Hz	68	1.38	UL	Al	157
	FZ40C1J-U	4.0	ST	RSIR	115V-60Hz	68	1.35	UL	Al	147
	FZ59C1H-U	5.9	ST	RSIR	115V-60Hz	110	1.45	----	Al	157
E	EZ40E1C-U	4.0	ST	RSCR	115V-60Hz	68	1.63	----	Al	174
	EZ40E1D-U	4.0	ST	RSCR	115V-60Hz	68	1.60	UL	Al	164
	EZ50E1E-U	5.0	ST	RSCR	115V-60Hz	92	1.59	----	Al	159
	EZ59E1C-U	5.9	ST	RSCR	115V-60Hz	110	1.65	UL	Al	164
	EZ65E1C-U	6.5	ST	RSCR	115V-60Hz	134	1.65	UL	Al	174
	EZ75E1A-U	7.5	ST	RSCR	115V-60Hz	160	1.75	UL	Cu	164
	EZ80E1C-U	8.0	ST	RSCR	115V-60Hz	170	1.65	UL	Al	174
	EZ80E1D-U	8.0	ST	RSCR	115V-60Hz	170	1.65	UL	Al	174



系列 Series	型号 Model	气缸容积 Displ (cm <sup>3</sup> )	冷却方式 Cooling Type	电机类型 Motor Type	电源频率 Power frequency	制冷量 Cooling Capacity (W)	性能系数 Coefficient of performance	认证 Certification	电机描述 Motor description	壳体高度 Shell height
--------------	-------------	-------------------------------------	----------------------	--------------------	----------------------------	--------------------------------	---------------------------------------	---------------------	------------------------------	----------------------

### R600a LBP

115V-60Hz

E	FZ35E1H-U	3.5	ST	RSIR	115V-60Hz	63	1.40	UL	Al	164
	FZ40E1G-U	4.0	ST	RSIR	115V-60Hz	70	1.48	----	Al	164
	FZ40E1J-U	4.0	ST	RSIR	115V-60Hz	67	1.36	UL	Al	159
	FZ45E1G-U	4.5	ST	RSIR	115V-60Hz	70	1.45	UL	Al	164
	FZ50E1E-U	5.0	ST	RSIR	115V-60Hz	92	1.55	UL	Al	174
	FZ50E1G-U	5.0	ST	RSIR	115V-60Hz	92	1.45	UL	Al	159
	FZ59E1E-U	5.9	ST	RSIR	115V-60Hz	110	1.50	----	Al	169
	FZ59E1H-U	5.9	ST	RSIR	115V-60Hz	110	1.45	UL	Al	164
	FZ80E1G-U	8.0	ST	RSIR	115V-60Hz	168	1.48	UL	Al	174
	FZ85E1G-U	8.5	ST	RSIR	115V-60Hz	176	1.47	UL	Al	169
H	EZ50H1Z-U	5.0	ST	RSCR	115V-60Hz	98	1.80	----	Al	178
	EZ55H1X-U	5.5	ST	RSCR	115V-60Hz	115	1.90	UL	Al	178
	EZ55H1Y-U	5.5	ST	RSCR	115V-60Hz	115	1.82	UL	Al	178
	EZ65H1W-U	6.5	ST	RSCR	115V-60Hz	137	1.92	----	Cu	178
	EZ65H1Y-U	6.5	ST	RSCR	115V-60Hz	137	1.87	UL	Al	178
	EZ65H1Z-U	6.5	ST	RSCR	115V-60Hz	137	1.83	----	Al	178
	EZ65H1A-U	6.5	ST	RSCR	115V-60Hz	137	1.75	----	Al	178
	EZ75H1Y-U	7.5	ST	RSCR	115V-60Hz	156	1.85	UL	Al	178
	EZ80H1A-U	8.0	ST	RSCR	115V-60Hz	173	1.77	UL	Al	174
	EZ80H1Z-U	8.0	ST	RSCR	115V-60Hz	175	1.88	UL	Cu	178
	EZ80H1Y-U	8.0	ST	RSCR	115V-60Hz	170	1.85	----	Al	178
	EZ85H1Z-U	8.5	ST	RSCR	115V-60Hz	185	1.85	----	Al	178
	EZ90H1W-U	9.0	ST	RSCR	115V-60Hz	195	1.95	----	Cu	178
	EZ90H1Y-U	9.0	ST	RSCR	115V-60Hz	195	1.85	----	Cu	178
	EZ90H1A-U	9.0	ST	RSCR	115V-60Hz	195	1.75	----	Al	178
	FZ55H1D-U	5.5	ST	RSIR	115V-60Hz	115	1.64	UL	Al	170
	FZ65H1D-U	6.5	ST	RSIR	115V-60Hz	136	1.62	UL	Al	170

### R600a LBP

115V-60Hz

H	FZ90H1H-U	9.0	ST	RSIR	115V-60Hz	190	1.40	----	Al	170
	EZ130H1Z-U	13.0	ST	RSCR	115V-60Hz	270	1.78	----	Cu	178
	CZ140H1A-U	14.0	ST	CSR	115V-60Hz	285	1.71	CB	Cu	178

### R134a LBP

115V-60Hz

E	EE25E1J-U	2.5	ST	RSCR	115V-60Hz	68	1.35	----	Al	170
	EE30E1F-U	3.0	ST	RSCR	115V-60Hz	88	1.47	----	Al	175
	EE30E1H-U	3.0	ST	RSCR	115V-60Hz	88	1.45	UL	Cu	165
	EE35E1F-U	3.5	ST	RSCR	115V-60Hz	113	1.46	UL	Al	175
	EE59E1E-U	5.9	ST	RSCR	115V-60Hz	192	1.55	----	Al	179
	EE59E1M-U	5.9	ST	RSCR	115V-60Hz	192	1.40	UL	Al	175
	FE25E1L-U	2.5	ST	RSIR	115V-60Hz	68	1.24	UL	Cu	165
	FE25E1M-U	2.5	ST	RSIR	115V-60Hz	68	1.15	UL	Al	160
	FE35E1G-U	3.5	ST	RSIR	115V-60Hz	116	1.44	UL	Al	170
	FE35E1M-U	3.5	ST	RSIR	115V-60Hz	116	1.25	UL	Al	160
H	FE40E1G-U	4.0	ST	RSIR	115V-60Hz	130	1.45	----	Cu	165
	FE40E1H-U	4.0	ST	RSIR	115V-60Hz	130	1.45	----	Al	179
	FE45E1F-U	4.5	ST	RSIR	115V-60Hz	145	1.47	UL	Al	170
	FE45E1M-U	4.5	ST	RSIR	115V-60Hz	145	1.30	UL	Al	170
	FE50E1H-U	5.0	ST	RSIR	115V-60Hz	165	1.45	----	Al	175
	FE59E1G-U	5.9	ST	RSIR	115V-60Hz	192	1.45	----	Al	170
	FE59E1M-U	5.9	ST	RSIR	115V-60Hz	192	1.40	UL	Al	175
	EE45H1Z-U	4.5	ST	RSCR	115V-60Hz	153	1.77	----	Cu	178
	EE45H1A-U	4.5	ST	RSCR	115V-60Hz	141	1.72	----	Al	178
	EE45H1B-U	4.5	ST	RSCR	115V-60Hz	160	1.73	UL	Cu	178
EE45H1C-U	4.5	ST	RSCR	115V-60Hz	160	1.65	----	Al	178	



系列 Series	型号 Model	气缸容积 Displ (cm <sup>3</sup> )	冷却方式 Cooling Type	电机类型 Motor Type	电源频率 Power frequency	制冷量 Cooling Capacity (W)	性能系数 Coefficient of performance	认证 Certification	电机描述 Motor description	壳体高度 Shell height
--------------	-------------	-------------------------------------	----------------------	--------------------	----------------------------	--------------------------------	---------------------------------------	---------------------	------------------------------	----------------------

### R134a LBP

115V~60Hz

H	EE50H1Z-U	5.0	ST	RSCR	115V~60Hz	178	1.69	UL	Cu	178
	EE50H1A-U	5.0	ST	RSCR	115V~60Hz	178	1.75	UL	Cu	178
	EE50H1B-U	5.0	ST	RSCR	115V~60Hz	178	1.70	UL	Cu	178
	EE50H1C-U	5.0	ST	RSCR	115V~60Hz	178	1.65	UL	Al	178
	EE55H1A-U	5.5	ST	RSCR	115V~60Hz	192	1.75	UL	Cu	178
	EE55H1C-U	5.5	ST	RSCR	115V~60Hz	192	1.66	----	Al	178
	EE65H1H-U	6.5	ST	RSCR	115V~60Hz	223	1.50	----	Al	178
	EE75H1B-U	7.5	ST	RSCR	115V~60Hz	236	1.69	----	Cu	178
	EE75H1D-U	7.5	ST	RSCR	115V~60Hz	250	1.55	----	Al	178
	EE75H1F-U	7.5	ST	RSCR	115V~60Hz	255	1.58	----	Al	178
	EE80H1H-U	8.0	ST	RSCR	115V~60Hz	270	1.45	----	Al	178
	FE65H1H-U	6.5	ST	RSIR	115V~60Hz	220	1.47	UL	Al	178

### R600a LBP

100V~50Hz/60Hz

E	EZ59E1A-J	100V~50Hz	5.9	ST	RSCR	95	1.51	----	Al	164
		100V~60Hz	110	1.75						
	EZ59E1C-J	100V~50Hz	5.9	ST	RSCR	95	1.36	----	Al	164
		100V~60Hz	110	1.60						
	EZ59E1Z-J	100V~50Hz	5.9	ST	RSCR	95	1.55	----	Al	178
		100V~60Hz	110	1.78						
	EZ65E1A-J	100V~50Hz	6.5	ST	RSCR	110	1.68	----	Al	174
		100V~60Hz	132	1.75						
	EZ75E1A-J	100V~50Hz	7.5	ST	RSCR	134	1.48	----	Al	164
		100V~60Hz	155	1.72						
	EZ75E1D-J	100V~50Hz	7.5	ST	RSCR	134	1.42	----	Cu	164
		100V~60Hz	155	1.65						
	EZ80E1C-J	100V~50Hz	8.0	ST	RSCR	137	1.60	----	Al	174
		100V~60Hz	168	1.65						
	FZ40E1J-J	100V~50Hz	4.0	ST	RSIR	56	1.16	----	Al	159
		100V~60Hz	65	1.35						
	FZ45E1H-J	100V~50Hz	4.5	ST	RSIR	71	1.20	----	Al	159
		100V~60Hz	82	1.40						
FZ59E1C-J	100V~50Hz	5.9	ST	RSIR	95	1.38	----	Al	164	
	100V~60Hz	113	1.65							
FZ59E1F-J	100V~50Hz	5.9	ST	RSIR	95	1.29	----	Al	169	
	100V~60Hz	113	1.55							
FZ65E1E-J	100V~50Hz	6.5	ST	RSIR	112	1.34	----	Cu	169	
	100V~60Hz	133	1.58							

### R600a LBP

100V~50Hz/60Hz

E	FZ65E1F-J	100V~50Hz	6.5	ST	RSIR	112	1.29	----	Al	169
		100V~60Hz	133	1.50						
	FZ75E1F-J	100V~50Hz	7.5	ST	RSIR	127	1.40	----	Al	169
		100V~60Hz	150	1.50						
	FZ80E1F-J	100V~50Hz	8.0	ST	RSIR	137	1.40	----	Al	174
		100V~60Hz	168	1.50						
FZ80E1H-J	100V~50Hz	8.0	ST	RSIR	137	1.20	----	Al	174	
	100V~60Hz	168	1.40							
H	FZ80H1C-J	100V~50Hz	8.0	ST	RSIR	150	1.67	----	Al	178
		100V~60Hz	170	1.70						
	FZ90H1F-J	100V~50Hz	9.0	ST	RSIR	170	1.40	----	Al	170
		100V~60Hz	190	1.50						
	EZ120H1C-J	100V~50Hz	12.0	ST	RSCR	210	1.50	----	Al	178
		100V~60Hz	239	1.69						

### R134a LBP

100V~50Hz/60Hz

E	FE25E1M-J	100V~50Hz	2.5	ST	RSIR	54	0.98	----	Al	160
		100V~60Hz	68	1.18						

### R134a LBP

220V~240V~50Hz

E	PE50E1H	5.0	ST	RSCR	220V-240V ~50Hz	141	1.45	CB	Al	175
	PE59E1H	5.9	ST	RSCR	220V-240V ~50Hz	165	1.45	CB	Al	175
	SE50E1H	5.0	ST	RSIR	220V-240V ~50Hz	138	1.35	CB	Al	175
H	PE45H1C	4.5	ST	RSCR	220V-240V ~50Hz	130	1.65	CB	Al	178
	PE50H1J	5.0	ST	RSCR	220V-240V ~50Hz	157	1.30	----	Al	178
	PE55H1A	5.5	ST	RSCR	220V-240V ~50Hz	170	1.75	----	Al	178
	PE65H1B	6.5	ST	RSCR	220V-240V ~50Hz	190	1.68	----	Cu	178
	PE65H1C	6.5	ST	RSCR	220V-240V ~50Hz	190	1.65	----	Al	178
	PE75H1B	7.5	ST	RSCR	220V-240V ~50Hz	220	1.70	CB	Cu	178
	PE80H1F	8.0	ST	RSCR	220V-240V ~50Hz	240	1.50	----	Al	178

### R600a LBP

220V~240V~60Hz

C	SZ45C1J-N	4.5	ST	RSIR	220V-240V ~60Hz	85	1.36	CB	Al	152
	SZ45C1M-N	4.5	ST	RSIR	220V-240V ~60Hz	85	1.25	----	Al	141
	SZ59C1J-N	5.9	ST	RSIR	220V-240V ~60Hz	108	1.26	CB	Al	157

系列 Series	型号 Model	气缸容积 Displ (cm <sup>3</sup> )	冷却方式 Cooling Type	电机类型 Motor Type	电源频率 Power frequency	制冷量 Cooling Capacity (W)	性能系数 Coefficient of performance	认证 Certification	电机描述 Motor description	壳体高度 Shell height
--------------	-------------	-------------------------------------	----------------------	--------------------	----------------------------	--------------------------------	---------------------------------------	---------------------	------------------------------	----------------------

### R600a LBP

220V-240V~60Hz

系列	型号	气缸容积	冷却方式	电机类型	电源频率	制冷量	性能系数	认证	电机描述	壳体高度
E	PZ50E1D-N	5.0	ST	RSCR	220V-240V ~60Hz	92	1.68	CB	Al	169
	PZ70E1C-N	7.0	ST	RSCR	220V-240V ~60Hz	140	1.65	---	Al	175
	PZ75E1A-N	7.5	ST	RSCR	220V-240V ~60Hz	150	1.75	---	Al	175
	PZ75E1C-N	7.5	ST	RSCR	220V-240V ~60Hz	152	1.65	CB	Al	175
	PZ90E1C-N	9.0	ST	RSCR	220V-240V ~60Hz	185	1.64	---	Al	178
	SZ45E1H-N	4.5	ST	RSIR	220V-240V ~60Hz	80	1.40	---	Al	159
	SZ59E1F-N	5.9	ST	RSIR	220V-240V ~60Hz	110	1.52	CB	Al	169
	SZ59E1J-N	5.9	ST	RSIR	220V-240V ~60Hz	110	1.30	---	Al	159
	SZ75E1E-N	7.5	ST	RSIR	220V-240V ~60Hz	150	1.55	CB	Al	169
	SZ75E1M-N	7.5	ST	RSIR	220V-240V ~60Hz	150	1.25	---	Al	159
	SZ90E1H-N	9.0	ST	RSIR	220V-240V ~60Hz	182	1.44	CB	Al	169
	SZ99E1H-N	9.9	ST	RSIR	220V-240V ~60Hz	200	1.40	---	Al	178
H	KZ150H1Z-N	15.0	ST	CSR	220V-240V ~60Hz	310	1.78	CB	Cu	178

### R134a LBP

220V-240V~60Hz

系列	型号	气缸容积	冷却方式	电机类型	电源频率	制冷量	性能系数	认证	电机描述	壳体高度
C	SE30C1P-N	3.0	ST	RSIR	220V-240V ~60Hz	80	1.10	CB	Al	152
	SE35C1R-N	3.5	ST	RSIR	220V-240V ~60Hz	80	1.00	---	Al	152
E	SE35E1K-N	3.5	ST	RSIR	220V-240V ~60Hz	115	1.30	---	Al	170
	SE40E1J-N	4.0	ST	RSIR	220V-240V ~60Hz	125	1.35	---	Al	170
H	SE40E1H-N	4.0	ST	RSIR	220V-240V ~60Hz	125	1.35	---	Al	175
	PE50H1C-N	5.0	ST	RSCR	220V-240V ~60Hz	175	1.63	CB	Al	178
	PE65H1C-N	6.5	ST	RSCR	220V-240V ~60Hz	220	1.50	---	Al	178
	PE65H1F-N	6.5	ST	RSCR	220V-240V ~60Hz	223	1.60	CB	Cu	178
	PE75H1C-N	7.5	ST	RSCR	220V-240V ~60Hz	250	1.50	---	Al	178
	PE75H1E-N	7.5	ST	RSCR	220V-240V ~60Hz	255	1.55	---	Al	178

### R600a LBP

208V-240V~60Hz

系列	型号	气缸容积	冷却方式	电机类型	电源频率	制冷量	性能系数	认证	电机描述	壳体高度
H	PZ110H1B-P	11.0	ST	RSCR	208V-240V ~60Hz	230	1.74	---	Al	178
	PZ130H1D-P	13.0	ST	RSCR	208V-240V ~60Hz	270	1.60	---	Al	178

### R600a LBP

220V-240V~50Hz (宽电压 wide voltage)

系列	型号	气缸容积	冷却方式	电机类型	电源频率	制冷量	性能系数	认证	电机描述	壳体高度	
C	SZ50C1J-9	5.0	ST	RSIR	220V~50Hz	81	1.30	---	Al	157	
	SZ59C1H-9	5.9	ST	RSIR	220V~50Hz	96	1.35	---	Al	178	
E	PZ59E1D-9	5.9	ST	RSCR	220V~50Hz	98	1.60	CB	Al	174	
	PZ65E1C-9	6.5	ST	RSCR	220V~50Hz	115	1.65	CB	Al	174	
	PZ65E1E-9	6.5	ST	RSCR	220V~50Hz	108	1.55	---	Al	174	
	PZ70E1C-9	7.0	ST	RSCR	220V~50Hz	120	1.60	---	Al	174	
	PZ75E1C-9	7.5	ST	RSCR	220V~50Hz	131	1.64	---	Al	174	
	PZ80E1D-9	8.0	ST	RSCR	220V~50Hz	145	1.65	---	Cu	174	
	PZ90E1F-9	9.0	ST	RSCR	220V~50Hz	165	1.55	---	Al	174	
	SZ50E1M-9	5.0	ST	RSIR	220V~50Hz	85	1.37	CB	Al	169	
	SZ59E1H-9	5.9	ST	RSIR	220V~50Hz	95	1.30	---	Al	164	
	SZ59E1J-9	5.9	ST	RSIR	220V~50Hz	95	1.40	CB	Al	169	
	SZ70E1G-9	7.0	ST	RSIR	220V~50Hz	122	1.45	CB	Al	174	
	SZ85E1H-9	8.5	ST	RSIR	220V~50Hz	155	1.45	---	Al	174	
	SZ90E1G-9	9.0	ST	RSIR	220V~50Hz	165	1.50	CB	Al	174	
	H	PZ50H1A-9	5.0	ST	RSCR	220V~50Hz	85	1.75	CB	Al	178
		PZ55H1Y-9	5.5	ST	RSCR	220V~50Hz	100	1.83	---	Al	178
		PZ65H1A-9	6.5	ST	RSCR	220V~50Hz	115	1.72	CB	Al	178
		PZ65H1X-9	6.5	ST	RSCR	220V~50Hz	116	1.88	CB	Cu	178
		PZ65H1Y-9	6.5	ST	RSCR	220V~50Hz	115	1.77	---	Al	178
PZ75H1Y-9		7.5	ST	RSCR	220V~50Hz	145	1.83	---	Al	178	
PZ80H1Y-9		8.0	ST	RSCR	220V~50Hz	150	1.82	---	Al	178	
PZ90H1Z-9		9.0	ST	RSCR	220V~50Hz	162	1.78	CB	Al	178	
SZ80H1H-9		8.0	ST	RSIR	220V~50Hz	146	1.39	---	Al	164	
SZ99H1H-9		9.9	ST	RSIR	220V~50Hz	180	1.45	---	Al	163.5	



系列 Series	型号 Model	气缸容积 Displ (cm <sup>3</sup> )	冷却方式 Cooling Type	电机类型 Motor Type	电源频率 Power frequency	制冷量 Cooling Capacity (W)	性能系数 Coefficient of performance	认证 Certification	电机描述 Motor description	壳体高度 Shell height
--------------	-------------	-------------------------------------	----------------------	--------------------	----------------------------	--------------------------------	---------------------------------------	---------------------	------------------------------	----------------------

### R134a LBP

220V~240V~50Hz (宽电压 wide voltage)

系列	型号	气缸容积	冷却方式	电机类型	电源频率	制冷量	性能系数	认证	电机描述	壳体高度	
C	SE30C1P-9	3.0	ST	RSIR	220V~50Hz	72	1.02	CB	Al	152	
	SE40C1P-9	4.0	ST	RSIR	220V~50Hz	91	1.10	CB	Al	157	
	SE40C1R-9	4.0	ST	RSIR	220V~50Hz	88	0.96	---	Al	157	
E	PE35E1D-9	3.5	ST	RSCR	220V~50Hz	95	1.55	---	Cu	165	
	PE35E1F-9	3.5	ST	RSCR	220V~50Hz	95	1.50	CB	Al	174	
	PE40E1H-9	4.0	ST	RSCR	220V~50Hz	115	1.40	---	Al	175	
	PE45E1F-9	4.5	ST	RSCR	220V~50Hz	120	1.50	---	Al	175	
	PE50E1H-9	5.0	ST	RSCR	220V~50Hz	136	1.40	---	Al	175	
	SE25E1R-9	2.5	ST	RSIR	220V~50Hz	55	1.00	---	Al	160	
	SE30E1M-9	3.0	ST	RSIR	220V~50Hz	75	1.15	CB	Al	165	
	SE35E1M-9	3.5	ST	RSIR	220V~50Hz	95	1.30	---	Al	165	
	SE40E1H-9	4.0	ST	RSIR	220V~50Hz	108	1.35	CB	Al	174	
	SE40E1K-9	4.0	ST	RSIR	220V~50Hz	108	1.25	CB	Al	165	
	SE45E1J-9	4.5	ST	RSIR	220V~50Hz	120	1.35	CB	Al	174	
	SE59E1H-9	5.9	ST	RSIR	220V~50Hz	160	1.38	---	Al	174	
	H	PE40H1C-9	4.0	ST	RSCR	220V~50Hz	110	1.65	---	Al	178
		PE45H1F-9	4.5	ST	RSCR	220V~50Hz	130	1.50	CB	Al	178
		PE50H1C-9	5.0	ST	RSCR	220V~50Hz	153	1.63	CB	Al	178
PE50H1F-9		5.0	ST	RSCR	220V~50Hz	153	1.50	---	Al	178	
PE55H1D-9		5.5	ST	RSCR	220V~50Hz	170	1.60	---	Al	178	
PE55H1F-9		5.5	ST	RSCR	220V~50Hz	163	1.55	CB	Al	178	
	PE65H1C-9	6.5	ST	RSCR	220V~50Hz	190	1.65	---	Al	178	

### R134a LBP

220V~240V~50Hz (宽电压 wide voltage)

系列	型号	气缸容积	冷却方式	电机类型	电源频率	制冷量	性能系数	认证	电机描述	壳体高度
H	PE65H1F-9	6.5	ST	RSCR	220V~50Hz	190	1.51	---	Al	178
	PE65H1H-9	6.5	ST	RSCR	220V~50Hz	195	1.55	CB	Al	178
	PE75H1C-9	7.5	ST	RSCR	220V~50Hz	220	1.65	---	Al	178
	PE75H1H-9	7.5	ST	RSCR	220V~50Hz	220	1.45	CB	Al	178
	PE80H1E-9	8.0	ST	RSCR	220V~50Hz	235	1.50	---	Al	178
	PE90H1D-9	9.0	ST	RSCR	220V~50Hz	280	1.60	CB	Cu	178
	PE90H1F-9	9.0	ST	RSCR	220V~50Hz	280	1.50	---	Al	178
	PE99H1H-9	9.9	ST	RSCR	220V~50Hz	300	1.45	---	Cu	178
	SE50H1F-9	5.0	ST	RSIR	220V~50Hz	150	1.48	CB	Al	178

### R600a LBP

220V~240V~50Hz&208V~240V~60Hz

系列	型号	气缸容积	冷却方式	电机类型	电源频率	制冷量	性能系数	认证	电机描述	壳体高度
E	PZ80E1D-3	8	ST	RSCR	220V-240V~50Hz	148	1.60	CB	Al	164
					208V-240V~60Hz	170	1.70	CB	Al	164
H	PZ55H1W-M	5.5	ST	RSCR	220V-240V~50Hz	100	1.90	CB	Cu	178
					208V-240V~60Hz	116	1.95	CB	Cu	178
	PZ55H1Z-M	5.5	ST	RSCR	220V-240V~50Hz	100	1.76	CB	Al	178
					208V-240V~60Hz	116	1.81	CB	Al	178
	PZ80H1Y-3	8	ST	RSCR	220V-240V~50Hz	150	1.82	---	Al	178
					208V-240V~60Hz	174	1.84	---	Al	178
	PZ90H1Y-3	9	ST	RSCR	220V-240V~50Hz	170	1.82	CB	Al	178
					208V-240V~60Hz	192	1.82	CB	Al	178
	PZ99H1Y-3	9.9	ST	RSCR	220V-240V~50Hz	188	1.83	CB	Al	178
					208V-240V~60Hz	220	1.85	CB	Al	178
PZ130H1A-M	13	ST	RSCR	220V-240V~50Hz	235	1.69	CB	Cu	187	
				208V-240V~60Hz	270	1.80	CB	Cu	187	

### R134a LBP

220V~240V~50Hz&208V~240V~60Hz

系列	型号	气缸容积	冷却方式	电机类型	电源频率	制冷量	性能系数	认证	电机描述	壳体高度
E	SE30E1M-M	3.0	ST	RSIR	208V-240V~60Hz	85	1.20	---	Al	164
					220V-240V~50Hz	75	1.15	---	Al	164

### R600a LBP

220V~240V~50Hz/60Hz

系列	型号	气缸容积	冷却方式	电机类型	电源频率	制冷量	性能系数	认证	电机描述	壳体高度
C	SZ40C1H-4	8.0	ST	RSIR	220V-240V~50Hz	60	1.28	---	Al	157
					220V-240V~60Hz	70	1.40			
E	PZ75E1D-4	7.5	ST	RSCR	220V-240V~50Hz	135	1.58	CB	Al	174
					220V-240V~60Hz	155	1.70			
	SZ65E1H-4	6.5	ST	RSIR	220V-240V~50Hz	114	1.35	CB	Al	174
					220V-240V~60Hz	130	1.50			
SZ70E1F-4	7.0	ST	RSIR	220V-240V~50Hz	119	1.52	---	Al	174	
				220V-240V~60Hz	136	1.60				

系列 Series	型号 Model	气缸容积 Displ (cm <sup>3</sup> )	冷却方式 Cooling Type	电机类型 Motor Type	电源频率 Power frequency	制冷量 Cooling Capacity (W)	性能系数 Coefficient of performance	认证 Certification	电机描述 Motor description	壳体高度 Shell height
--------------	-------------	-------------------------------------	----------------------	--------------------	----------------------------	--------------------------------	---------------------------------------	---------------------	------------------------------	----------------------

### R600a LBP

220V~240V~50Hz/60Hz

E	SZ75E1H-4	7.5	ST	RSIR	220V-240V~50Hz	133	1.49	---	Al	174
					220V-240V~60Hz	151	1.62			
H	PZ80H1Z-4	8.0	ST	RSCR	220V-240V~50Hz	150	1.75	---	Al	178
					220V-240V~60Hz	174	1.83			
	PZ99H1C-4	9.9	ST	RSCR	220V-240V~50Hz	182	1.62	CB	Al	178
					220V-240V~60Hz	213	1.73			
SZ99H1H-4	9.9	ST	RSIR	220V-240V~50Hz	181	1.51	---	Al	178	
				220V-240V~60Hz	211	1.65				

### R134a LBP

220V~240V~50Hz/60Hz

C	PE40C1H-4	4.0	ST	RSCR	220V-240V~50Hz	96	1.20	CB	Al	157
					220V-240V~60Hz	112	1.33			
E	PE40E1J-4	4.0	ST	RSCR	220V-240V~50Hz	110	1.20	---	Al	164
					220V-240V~60Hz	130	1.35			
	PE40E1H-4	4.0	ST	RSCR	220V-240V~50Hz	110	1.40	CB	Al	170
					220V-240V~60Hz	130	1.50			
PE50E1F-4	4.5	ST	RSCR	220V-240V~50Hz	138	1.42	CB	Al	175	
				220V-240V~60Hz	162	1.54				
SE45E1J-4	4.5	ST	RSIR	220V-240V~50Hz	120	1.20	---	Al	175	
				220V-240V~60Hz	145	1.35				
H	PE50H1F-4	5.0	ST	RSCR	220V-240V~50Hz	155	1.60	CB	Al	178
					220V-240V~60Hz	180	1.63			
	PE55H1C-4	5.5	ST	RSCR	220V-240V~50Hz	170	1.60	---	Al	178
					220V-240V~60Hz	198	1.65			
	PE65H1A-4	6.5	ST	RSCR	220V-240V~50Hz	195	1.75	---	Cu	178
					220V-240V~60Hz	220	1.80			
PE65H1C-4	6.5	ST	RSCR	220V-240V~50Hz	195	1.60	---	Al	178	
				220V-240V~60Hz	220	1.65				

### R600a LBP

127V~60Hz

E	FZ50E1F-B	5.0	ST	RSIR	127V~60Hz	92	1.45	CB	Al	165										
											FZ75E1F-B	7.5	ST	RSIR	127V~60Hz	155	1.50	---	Al	169
											FZ80E1F-B	8.0	ST	RSIR	127V~60Hz	165	1.47	---	Al	169
H	EZ110H1B-B	11.0	ST	RSCR	127V~60Hz	225	1.70	CB	Al	178										
											EZ130H1B-B	13.0	ST	RSCR	127V~60Hz	270	1.70	---	Al	178

### R134a LBP

127V~60Hz

E	FE30E1J-E	3.0	ST	RSIR	127V~60Hz	86	1.35	---	Al	165										
											FE35E1J-B	3.5	ST	RSIR	127V~60Hz	115	1.35	CB	Al	165
											EE50E1F-B	5.0	ST	RSCR	127V~60Hz	168	1.50	CB	Al	175

### R134a LBP

127V~60Hz

H	EE50H1C-B	5.0	ST	RSCR	127V~60Hz	185	1.65	---	Al	178										
											EE65H1E-B	6.5	ST	RSCR	127V~60Hz	223	1.56	CB	Cu	178
											EE75H1C-B	7.5	ST	RSCR	127V~60Hz	250	1.65	---	Al	178

### R290 LBP

115V~60Hz

E	EA35E1G-U	3.5	ST	RSCR	115V~60Hz	193	1.5	---	Al	178
H	EA59H1D-U	5.9	ST	RSCR	115V~60Hz	345	1.62	---	Al	178
	EA80H1D-U	8	ST	RSCR	115V~60Hz	480	1.6	---	Cu	178

### R290 LBP

220V~240V~50Hz

E	PA35E1E	3.5	ST	RSCR	220V~50Hz	162	1.52	CCC	Al	178										
											PA45E1E	4.5	ST	RSCR	220V~50Hz	205	1.55	CCC/CB	Al	178
											SA35E1G	3.5	ST	RSCR	220V~50Hz	160	1.45	---	Al	178
											SA45E1G	4.5	ST	RSCR	220V~50Hz	205	1.45	---	Al	178
H	PA55H1B	5.5	ST	RSCR	220V~50Hz	270	1.74	---	Cu	178										
											PA59H1C	5.9	ST	RSCR	220V~50Hz	295	1.65	---	Al	178
	PA65H1C	6.5	ST	RSCR	220V~50Hz	330	1.62	CCC	Al	178										
											PA80H1C	8	ST	RSCR	220V~50Hz	395	1.53	CCC/CB	Al	178
	PA90H1F	9	ST	RSCR	220V~50Hz	450	1.55	---	Cu	182										
											PA99H1F	9.9	ST	RSCR	220V~50Hz	475	1.5	---	Cu	182



产品性能参数

系列 Series	型号 Model	气缸容积 Displ. (cm <sup>3</sup> )	冷却方式 Cooling Type	电机类型 Motor Type	电源频率 Power frequency	制冷量 Cooling Capacity (W)	性能系数 Coefficient of performance	认证 Certification	电机描述 Motor description	壳体高度 Shell height
--------------	-------------	--------------------------------------	----------------------	--------------------	----------------------------	--------------------------------	---------------------------------------	---------------------	------------------------------	----------------------

R290 HBP

220V-240V-50Hz

H	型号	气缸容积	冷却方式	电机类型	电源频率	制冷量	性能系数	认证	电机描述	壳体高度
	PA65HHA	6.5	ST	RSCR	220V-50Hz	850	2.8	---	Cu	178
	PA80HHA	8	ST	RSCR	220V-50Hz	1080	2.75	CCC/TUV	Cu	178
	PA99HHA	9.9	ST	RSCR	220V-50Hz	1280	2.45	---	Cu	182

R134a MBP

饮水机专用 Water dispenser

C	型号	气缸容积	冷却方式	电机类型	电源频率	制冷量	性能系数	认证	电机描述	壳体高度
	FE25CHR	2.5	ST	RSIR	115V-60Hz	130	1.47	UL	Al	147
	FE30CHR	3.0	ST	RSIR	115V-60Hz	159	1.62	UL	Al	152
	SE30C1P	3.0	ST	RSIR	220V-50Hz	136	1.50	CCC/VDE	Al	152

LBP

异种电源 Different power

E	型号	气缸容积	冷却方式	电机类型	电源频率	制冷量	性能系数	认证	电机描述	壳体高度
	FE30E1J-E	3.0	ST	RSIR	115V-127V-60Hz	86	1.35	---	Al	165
	FZ45E1J-H	4.5	ST	RSIR	100V-50Hz/60Hz	85	1.50	---	Al	169
					127V-60Hz	85	1.50	---	Al	169



R290定速大冷量冰箱用压缩机  
R290 REFRIGERATOR COMPRESSOR

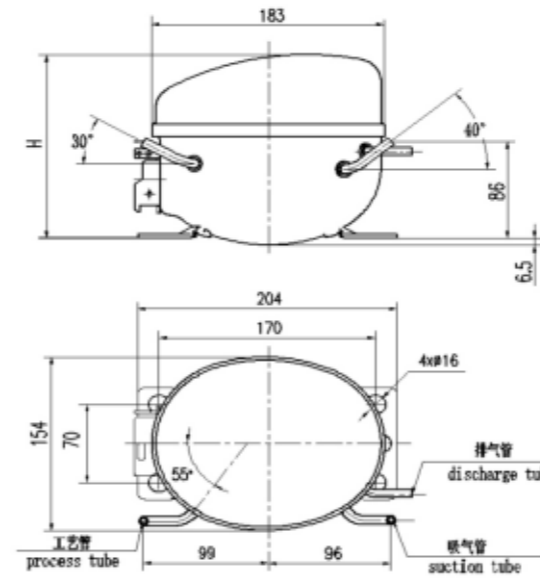
- 1、高效节能、高稳定、宽电压
- 2、实现大容积冷柜快速制冷要求

The characteristics of efficient energy saving, high stability, and wide range of voltage can achieve the requirements for rapid refrigeration of large-volume refrigerators.

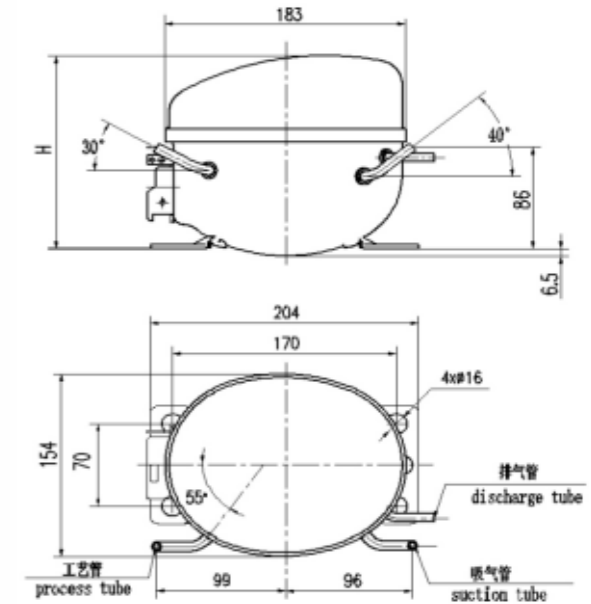
外形图 (一)

OUTLINE DRAWING OF COMPRESSOR (A)

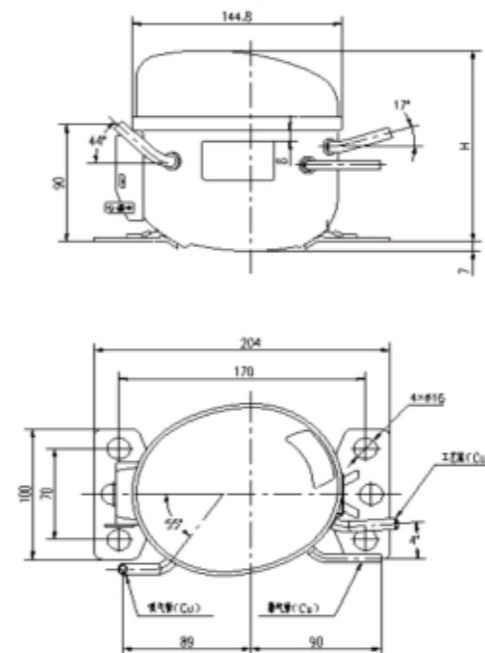
V SERIES



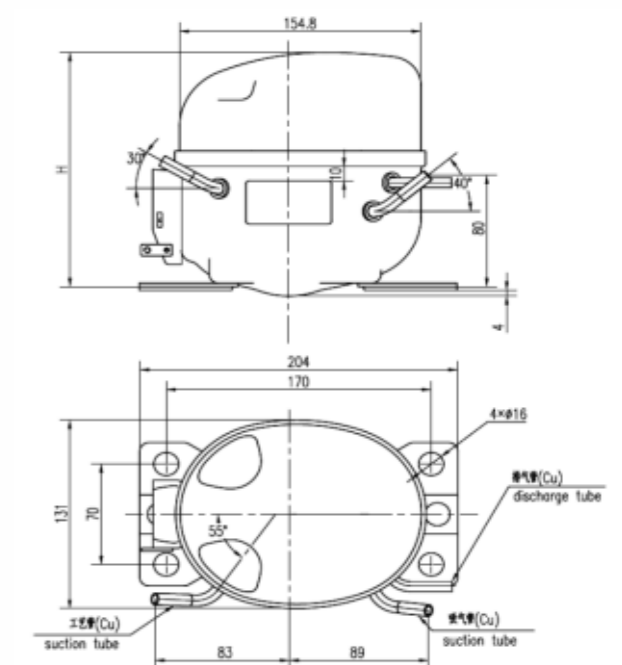
H series



C series



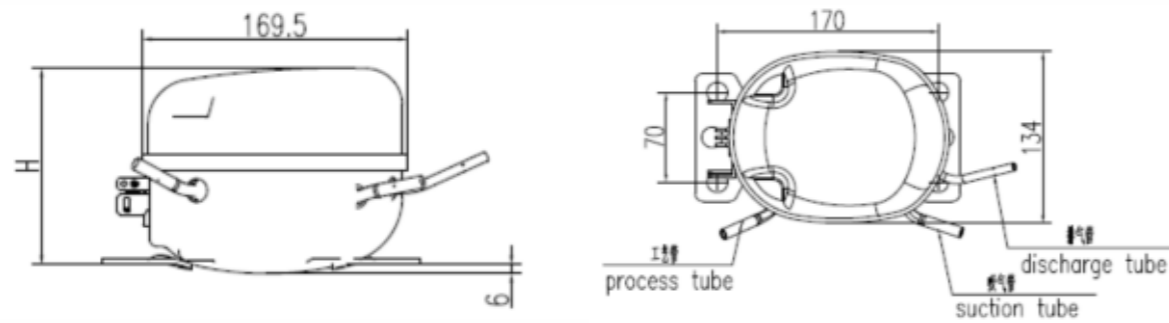
E series



## 外形图 (二)

### OUTLINE DRAWING OF COMPRESSOR (B)

#### K series



系列 Series	高度 Height(mm)
H	187/183/178/170/164
E	178/169/164/159
C	157/152/147
V	145/138/120
K	135/130

#### 备注 Remarks:

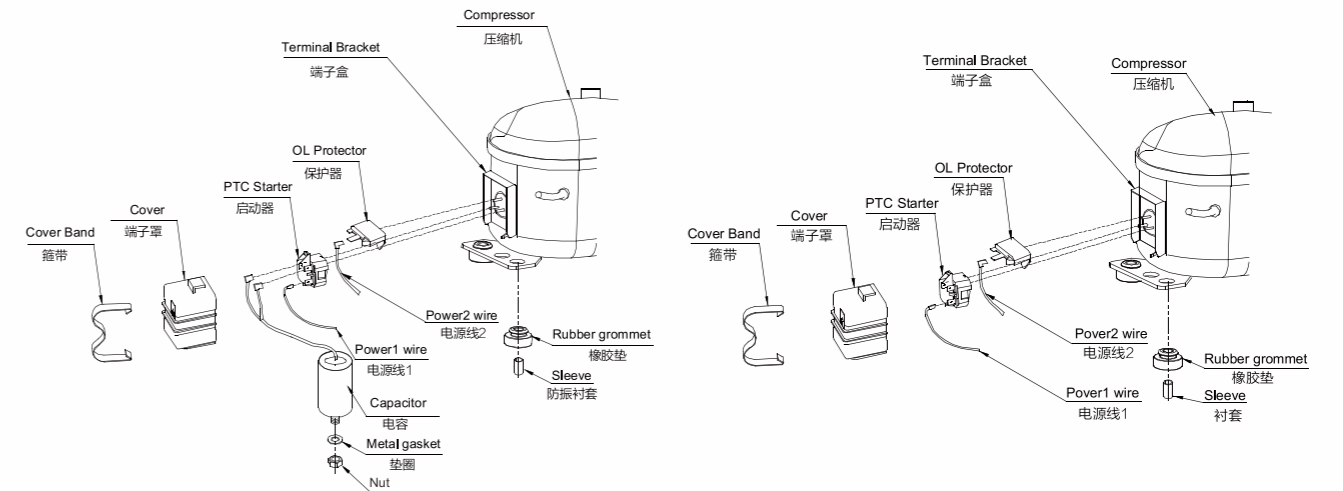
- ※ 原则上吸排气管不能互换，若互换则COP和制冷量下降约5%左右；  
In principle, suction and discharge pipes are not interchangeable, if interchanged, the COP and cooling capacity will be reduced by about 5%;
- ※ 接水盘扣增加与否可根据客户要求而定；  
Whether water pan clip is added or not can be determined according to customer requirements;
- ※ 三管的内径、弯管方向可根据客户要求而定。  
Inner diameters of the three tubes and bending direction can be determined according to customer requirements.

## 附件安装图

### INSTALLATION OF ACCESSORIES

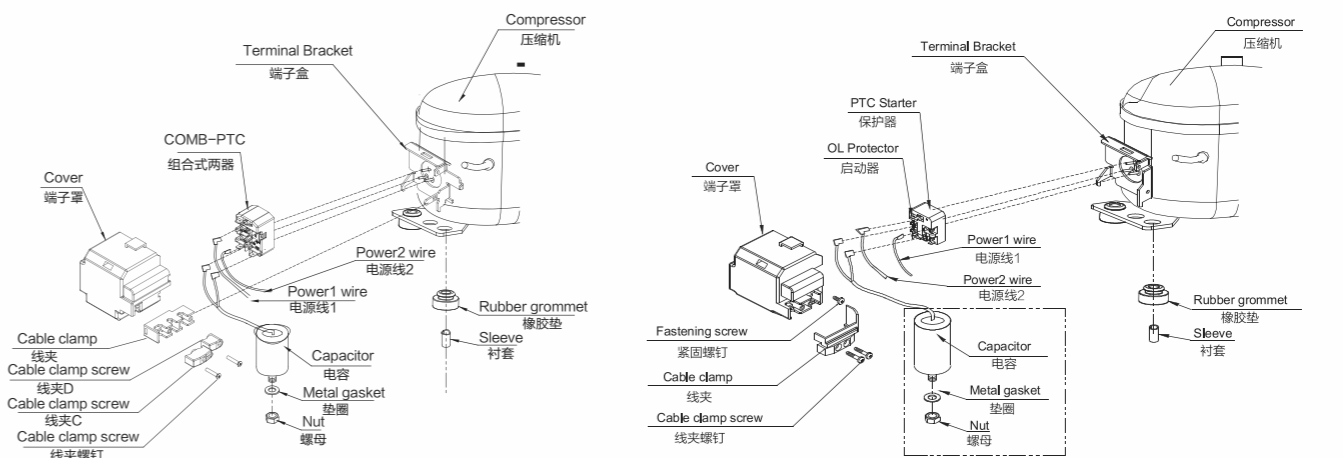
#### 组装--箱带式接线盒 Assembly--cover band type terminal box

#### 电机类型 Motor Type: RSCR/RSIR



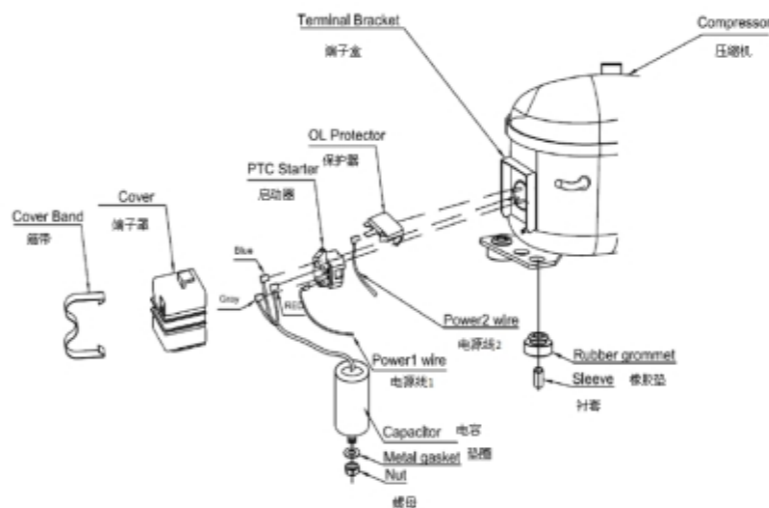
#### 组装--线夹式接线盒 Cable clamp type terminal box

#### 电机类型 Motor Type: RSCR



#### 组装--箱带式接线盒 Cable clamp type terminal box

#### 电机类型 Motor Type: CSR

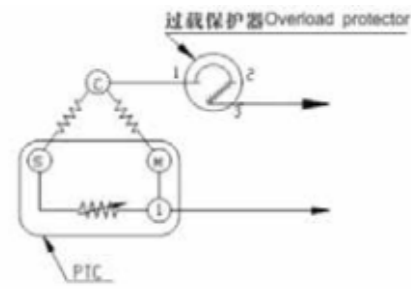




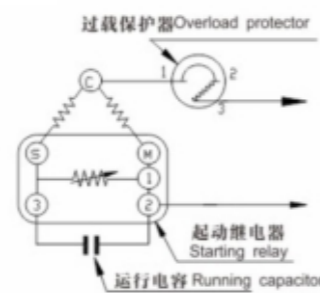
## 电气接线图

### ELECTRIC WIRING DIAGRAM

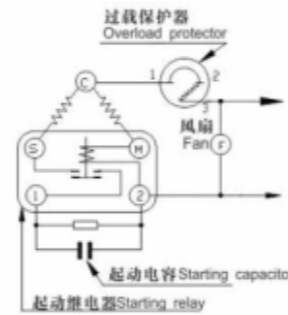
RSIR



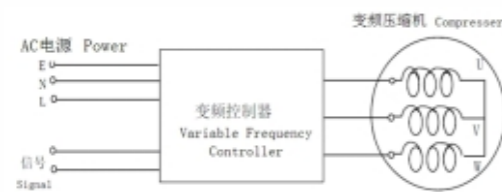
RSCR



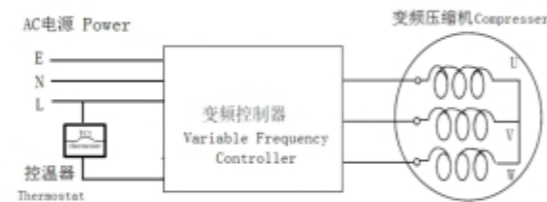
CSIR



PMSM 直流变频 (电控)



PMSM 直流变频 (机控)

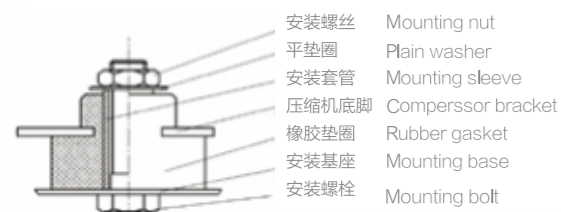


## 地脚安装方式

### ANCHOR INSTALLATION MODE

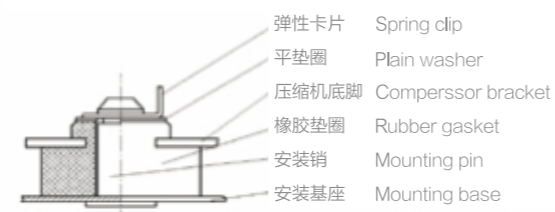
螺栓式  
Bolted Type

安装方式 1  
Mounting type 1



压片式  
Spring Clip Type

安装方式 2  
Mounting type 2



## 压缩机标准包装

### COMPRESSOR STANDARD PACKAGE

依据运输要求，分为出口包装和内销包装，分别见下图：

The packing is divided into export packing and domestic packing, as shown below respectively:



出口包装  
Export Packing



内销包装  
Packing for domestic sale

产品系列 Product Series	外形尺寸 External Dimensions			包装层数 No. of Layers	包装数量(台) Quantity (Unit)	毛重 Gross Weight (kg)
	L (mm)	W (mm)	H (mm)			
H/V系列 H/V series	1100	920	1027/1077	4/5	96/100/120	771~1100
E/K系列 E/K series	1100	920	1120/1190	4/5	112/120/140	810~920
C系列 C series	1100	920	1050/1100	4/5	112/120/140	700~760

#### 备注 Remarks:

出口包装单包层数根据货柜尺寸及载重要求确定。  
The number of layers of a single package for export packing is to be determined according to the dimensions of the container and load carrying requirements.

## 一般技术说明

### GENERAL TECHNICAL DESCRIPTION



- 1、压缩机在真空条件下的不得加高电压测试或进行启动测试；
- 2、压缩机可以在0.3Mpa（R600a，表压）或0.5Mpa（R134a，表压）平衡压力下在标称电压的85%下启动；
- 3、冷媒封入时，会出现冷媒在上、冷冻机油在下的分层状态，此时请不要立即启动压缩机，若启动由于冷冻机油润滑量不足，导致机械部件划伤；且压力未及时平衡，会导致启动不良。

1. The compressor under vacuum condition should not be tested at high voltage or tested for startup;
2. The compressor may be started up at 85% of nominal voltage under 0.3MPa (G) (for R600a) or 0.5MPa (G) for (R134a) balance pressure;
3. When filling the refrigerant into the compressor, there will appear the phenomenon of stratification that the refrigerant is on the top and refrigerator oil is at bottom, in this case, please don't immediately start up the compressor, if you do so, the mechanical components may be scratched due to insufficient amount of lubricating refrigerator oil; moreover, the pressure has not achieved equilibrium, which will cause poor startup.



- 1、压缩机搬运过程中需要保持压缩机垂直，不能倒置，并尽量避免撞击和振动；
- 2、压缩机启动器、保护器等电装品必须使用配套制定的式样；
- 3、拔出橡皮塞，请在5分钟内将压缩机与制冷系统连接，不允许有任何空气中的灰尘或潮气进入压缩机里面；
- 4、不要对吸气管、排气管施加强制性弯曲力；
- 5、不得往压缩机内注入任何非指定液体；
- 6、制冷系统不能含氟系列残渣物（除锈剂、清洗剂（包含R113）等），有机物的残渣量在100mg以下；
- 7、冷媒充注不要超过规定量；
- 8、压缩机外接电源线不能接错，若发生误接线，压缩机逆转，压缩机不能再使用；
- 9、压缩机端子罩内的配线须使用耐热性高的配线。

1. During the handling of the compressor, it is required to keep the compressor in vertical position, don't place it upside down and avoid impact and vibration as far as possible;
2. Electric components like starter, protector etc. of the compressor must adopt the specifications specified by our company;
3. Pull out the rubber plug, please connect the compressor with the refrigerating system within 5 minutes, it is not allowed to let any dust or moisture in the air enter the compressor;
4. Do not apply positive bending force to the suction and exhaust pipes;
5. It is forbidden to fill any non-specified liquid into the compressor;
6. The refrigerating system should not contain chlorine series residue (rust remover, cleaning agent containing R113 etc.), and the amount of residual organic matter should be below 100mg;
7. The refrigerant charge should not exceed the specified amount;
8. Do not wrongly connect the external power lines of the compressor, if they are connected wrongly, the compressor will be reversed and cannot be used any longer;
9. The wires in the terminal cover of the compressor must use high temperature resistant ones.



- 1、压缩机出厂后的库存期最好不要超过6个月。如果超过6个月，请检查压缩机内的干燥氮气是否充足，必要时补充；
- 2、请将压缩机储存于通风干燥的地方，尽量避免湿气。

1. The warehouse storage period of the compressor after delivery should preferably not exceed 6 months; If the storage period exceeds 6 months, please check if the dry nitrogen gas in the compressor is sufficient, and make up it, if necessary.
2. Please store the compressor in a well ventilated dry place and try to avoid moisture.

## CONTACT US 联系我们

### 安徽美芝制冷设备有限公司

地址：安徽省合肥市高新技术产业开发区科学城彩虹路418号  
邮编：230031  
电话：+86-551-65298967  
传真：+86-551-65298279  
网址：www.gmcc-welling.com

### ANHUI MEIZHI COMPRESSOR CO.,LTD

Address: No.4 18, Caihong Road High-Tech Industrial Development Zone  
Hefei, Anhui, P. R. China  
Postcode: 230031  
Tel: +86-551-65298967  
Fax: +86-551-65298279  
www.gmcc-welling.com

### GMCC 美芝技术服务中心

电话：+86-0551-65298896  
咨询时间：周一至周五 AM 8:00-11:30  
PM 14:00-17:00

### GMCC TECHNICAL SERVICE CENTER

Tel: +86-0551-65298896  
Service Time: am 8:00-11:30  
pm 14:00-17:00  
Monday through Friday

### GMCC 印度技术中心

GMCC TECHNOLOGY R & D CENTER  
Address: Ground floor, Plot No. 657,  
Pace City - 2, Sector-37, Gurgaon  
Phone: +91 8447513953  
Contact: Leo Wang