

Compressor, hermétiques, DANFOSS, TL,
FR et SC, SC10B, SC12B, SC15B, SC18B,
SC21B, SC10G, SC12G, SC15C, SC10B,
SC12B, SC15C, SC10G,
SC12G, SC18G, SC21G, SC12CL, SC18CL

Category: compressor

written by www.mbsm.pro | 18 January 2021



SC12B

220-240V-50Hz

HBP LST/HST

240V-50Hz

LBP LST/HST

220-240V-60Hz

LBP LST/HST



Danfoss

104L



54AT7LHD

2670

CE

MADE IN GERMANY

Compresseurs hermétiques DANFOSS TL, FR et SC

BOC partie No.	Code Danfoss	Puissance nominale et applic	Refrig.	Capacité nominale (watts)	Réf. BOC	Code Danfoss	Puissance nominale et applic	Réfrigérer	Capacité nominale (watts)
FR6B	103U2654	1/5 MBP	R12	354	TL3F	102G4300	1/10 LBP	R134a	58
FR.5B	103U2854	1/4 MBP	R12	450	TL4F	102G4400	1/8 LBP	R134a	84
SC10B *	104L2510	1/3 MBP	R12	588	TL55F	102G4520	1/6 LBP	R134a	127
FR11B	103U2154	1/3 MBP	R12	624	TL57F	102G4720	1/5 LBP	R134a	162
SC12B *	104L2670	4/9 MBP	R12	756	NL7F	105G6706	1/4 LBP	R134a	183
SC15B *	104L2830	1/2 MBP (LBP)	R12 (R502)	912 (768)	NL9F **	105G6802	1/4 LBP	R134a	214
SC18B *	1042110	2/3 MBP (LBP)	R12 (R502)	1044 (900)	NL11F **	105G6910	1/4 LBP	R134a	274
SC21B	104L2310	3/4 MBP	R12	1212	SC15F **	104G8500	1/3 LBP	R134a	319
SC10B	104L2510	1/3 LBP	R502	468	SC18F **	104G8800	4/9 LBP	R134a	395
SC12B	104L2670	4/9 LBP	R502	612	TL3G	104G4350	1/8 MBP	R134a	175
SC15C	104L2832	2/3 LBP	R502	768	TL4G	102G4452	1/6 MBP	R134a	215
SC18C	104L2111	3/4 LBP	R502	900	FR6G	103G6660	1/5 MBP	R134a	351
SC10G	104G8000	1/3 MBP	R134a	591	FR.5G	103G6780	1/4 MBP	R134a	468
SC12G	104G8240	4/9 MBP	R134a	751	FR11G	103G6980	1/3 MBP	R134a	609
SC18G	104G8820	2/3 MBP	R134a	1059	SC15G	104G8520	1/2 MBP	R134a	892
SC21G	104G8140	3/4 MBP	R134a	1256	SC10CL	104L2523	1/3 MBP	R507	450
SC12CL	104L2623	4/9 LBP	R507	624	SC15CL	104L2853	2/3 LBP	R507	758
SC18CL	104L2123	3/4 LBP	R507	893					

Remarque:

1. Les compresseurs marqués ** sont équipés de raccords de refroidisseur d'huile.
2. Les compresseurs marqués * peuvent être utilisés sur les systèmes R502 avec un fonctionnement à tube capillaire dans la gamme LBP.
3. (Systèmes sans dégivrage automatique uniquement).

Capacités nominales basées sur:

LBP = -23,3 ° C température d'évaporation

MBP = -5 ° C température d'évaporation

Relais de remplacement (appareil de démarrage)	
Réf. BOC	Convient au modèle de compresseur
103N0011	TL3A à TL5A, FR7.5A à FR11A
103N0002	SC12A, SC15A

urs muraux, systèmes de refroidissement et de chauffage

Tableau de puissance des compresseurs Danfoss

Tableau de puissance des compresseurs

Danfoss

Capacité nominale (Watts)	Réfrigérant	Puissance nominale et applic	Code Danfoss	BOC PartNo
Capacité nominale en watts	Gaz réfrigérant	Puissance et application	Code du compresseur Danfoss	Numéro d'article
354 http://pakij.ir	R12	1/5 MBP	103U2654 http://pakij.ir	FR6B
450	R12	1/4 MBP	103U2854	FR8.5B
588 http://pakij.ir	R12	1/3 MBP	104L2510 http://pakij.ir	SC10 * B
624	R12	1/3 MBP	103U2154	FR11B
756 http://pakij.ir	R12	4/9 MBP	104L2670 http://pakij.ir	SC12 * B
912 (768)	R12 (R502)	1/2 MBP (LBP)	104L2830	SC15 * B
1044 (900)	R12 (R502)	1/3 MBP (LBP)	1042110	SC18 * B
1212 http://pakij.ir	R12	3/4 MBP	104L2310 http://pakij.ir	SC21B
468	R502	1/3 LBP	104L2510	SC10B
612	R502	4/9 LBP	104L2670	SC12B
768 http://pakij.ir	R502	1/3 LBP	104L2832 http://pakij.ir	SC15C
900	R502	3/4 LBP	104L2111	SC18C
591	R134a	1/3 MBP	104G8000	SC10G
751 http://pakij.ir	R134a	4/9 MBP	104G8240 http://pakij.ir	SC12G
1059	R134a	1/3 MBP	104G8820	SC18G
1256	R134a	3/4 MBP	104G8140	SC21G
624 http://pakij.ir	R507	4/9 LBP	104L2623 http://pakij.ir	SC12CL
893	R507	3/4 LBP	104L2123	SC18CL



SC12B

220-240V-50Hz

HBP LST/HST

240V-50Hz

LBP LST/HST

220-240V-60Hz

LBP LST/HST



Danfoss

104L



54AT7LHD

2670

CE

MADE IN GERMANY

Mbsm_dot_pro_private_PDF_compressor-danfossTélécharger

Mbsm_dot_pro_private_PDF_Danfoss_komp_R12_R22_R502Télécharger

Mbsm_dot_pro_private_PDF_Danfoss_komp_R12_R22_R502-Télécharger

Rejoignez-nous

BOC PartNo Numéro d'article	Code Danfoss Code du compresseur Danfoss	Puissance nominale et applic Puissance et application	Réfrigérer Gaz réfrigérant	Capacité nominale (Watts) Capacité nominale en watts
FR6B	103U2654 defrostLir	1/5 MBP	R12	354 defrostLir
FR8.5B	103U2854	1/4 MBP	R12	450
Private Picture Copyright: WWW.MBSM.PRO				
SC10 * B	104L2510 defrostLir	1/3 MBP	R12	588 defrostLir
FR11B	103U2154	1/3 MBP	R12	624
SC12 * B	104L2670 defrostLir	4/9 MBP	R12	756 defrostLir
SC15 * B	104L2830	1/2 MBP (LBP)	R12 (R502)	912 (768)
SC18 * B	1042110	2/3 MBP (LBP)	R12 (R502)	1044 (900)
Private Picture Copyright: WWW.MBSM.PRO				
SC21B	104L2310 defrostLir	3/4 MBP	R12	1212 defrostLir
SC10B	104L2510	1/3 LBP	R502	468
SC12B	104L2670	4/9 LBP	R502	612
SC15C	104L2832 defrostLir	2/3 LBP	R502	768 defrostLir
SC18C	104L2111	3/4 LBP	R502	900
SC10G	104G8000	1/3 MBP	R134a	591
Private Picture Copyright: WWW.MBSM.PRO				

SC12G	104G8240 defrostLir	4/9 MBP	R134a	751 defrostLir
SC18G	104G8820	2/3 MBP	R134a	1059
SC21G	104G8140	3/4 MBP	R134a	1256
SC12CL	104L2623 defrostLir	4/9 LBP	R507	624 defrostLir
SC18CL	104L2123	3/4 LBP	R507	893

Private Picture Copyright : WWW.MBSM.PRO

Mbsm.pro, PDF, CONGELATEUR, No-Frost, ENIM, ALGERIE, REFREGERATEUR, FR 4506, FR 4506 K, FR-4506K, Classe N

Category: Files

written by www.mbsm.pro | 18 January 2021



Private Picture Copyright : WWW.MBSM.PRO



Picture Copyright : WWW.MBSM.PRO

[Mbsm_dot_pro_private_PDF_HPL23YH-5-3Télécharger](#)

[Mbsm_dot_pro_private_PDF_HPL23YH-5-Télécharger](#)

**DAEWOO COMPRESSOR, HPL23YH-5, 199W,
1/4 Hp, R134A , 90G, CONGELATEUR, No-
Frost, ENIM, ALGERIE, REFREGERATEUR,
FR 4506, FR 4506 K, FR-4506K, Classe
N, Volume Brut 447L , Volume utile
273L, Volume congélat 101L , 220-240v
50Hz**

Category: compressor

written by www.mbsm.pro | 18 January 2021

1. OUTLINE

DIVISION		CONTENTS
MODEL NAME		FR4506K/N
USABLE CAPACITY(l)	FREEZER	101
	REFRIGERATOR	273
	TOTAL	374
EXTERNAL DIMENSION	WIDTH	708mm
	DEPTH	706mm
	HEIGHT	1715/1759mm
REFRIGERANT	R134a	90g
COOLING & CONTROL SYSTEM	COOLING SYSTEM	Fan Cooling System
	DEFROST SYSTEM	Fin Evaporator Forced
	DEFROST CONTROL	Automatic Start & Stop
NET WEIGHT(Kg)		69kg

Private Picture Copyright: WWW.MBSM.PRO

Capacité totale 374 L

Compartiment denrées fraîches 273L

Compartiment denrées congelées 101L

Dimensions (mm) – Sans emballage : 1759X706X708mm

– Avec emballage : 1801X726X754mm Poids

net (kg) : 78Kg

Brut (kg) : 69Kg

Contrôle des températures Thermostat

Type de refroidissement : No Frost (Dynamique)

Éclairage intérieur

Alimentation : 220-230/50/HZ

Consommation d'énergie (kwh / an) 520


Classe énergétique B

Classe climatique : Tempérée T

CFC 0 %

Réfrigérant R134 A




ENIEM		Fabriqué en Algérie
Réfrigérateur-Congélateur	****	
Modèle FR-4506K		Classe N
Volume brut		447L
Volume utile compt denrées fraîches		273L
Volume utile compt basse température		101L
Voltage / Fréquence		220-240V - 50Hz
Puissance		
Puissance de dégivrage		160W
Puissance de lampe		15W*1
Consommation d'énergie(kwh/24h)		1.42
Réfrigérant R134a		90 grs
N° de série		
Code : Q376-29-1		





Picture Copyright : WWW.MBSM.PRO

ENIEM		Fabriqué en Algérie
Réfrigérateur-Congélateur	****	
Modèle FR-4506K		Classe N
Volume brut	447L	
Volume utile compt denrées fraîches	273L	
Volume utile compt basse température	101L	
Voltage / Fréquence	220-240V -- 50Hz	
Puissance		
Puissance de dégivrage	160W	
Puissance de lampe	15W*1	
Consommation d'énergie(kwh/24h)	1.42	
Réfrigérant R134a	90 grs	
N° de série		
Code : Q376-29.1		



Private Picture Copyright : WWW.MBSM.PRO

1. OUTLINE

DIVISION		CONTENTS
MODEL NAME		FR4506K/N
USABLE CAPACITY(l)	FREEZER	101
	REFRIGERATOR	273
	TOTAL	374
EXTERNAL DIMENSION	WIDTH	708mm
	DEPTH	706mm
	HEIGHT	1715/1759mm
REFRIGERANT	R134a	90g
COOLING & CONTROL SYSTEM	COOLING SYSTEM	Fan Cooling System
	DEFROST SYSTEM	Fin Evaporator Forced
	DEFROST CONTROL	Automatic Start & Stop
NET WEIGHT(Kg)		69kg

Private Picture Copyright : WWW.MBSM.PRO



HEL23YG-3B
② ② ② ② ① ② ②

NO	CONTENTS	
① Refrigerant	H : R134a I : R600a No marking : R12	
② Motor type	PTC	100V Series F : RSIR E : RSCR C : CSIR B : CSR 220V Series S : RSIR P : RSCR K : CSIR D : CSR
	C-relay	100V Series R : RSIR N : CSIR 220V Series T : RSIR G : CSIR
③ Application	L : L B P H : H B P	
④ Grade of Cooling Capacity	(reference : table of capacity range)	
⑤ Series name	JE Y YE YH YG	
⑥ Voltage & Frequency	No marking : 100V 50/60Hz	
	1 : 110-115V 60Hz 2 : 127V 60Hz 3 : 110V 60Hz 4 : 220V 60Hz 5 : 220-240V 50Hz 7 : 115-127V 60Hz 8 : 220-240V 50Hz / 220V 60Hz 9 : 110V 50Hz	
⑦ Improved data order		

Private Picture Copyright : WWW.MBSM.PRO

Model	Cooling Capacity			Efficiency			Motor Type	Cooling Type	NetWeight [kg]	OilQty. [cc]
	Kcal/h	Watt	Btu/h	EFF Kcal/Wh	COP W/W	EER Btu/Wh				
HPL21YE-5-K	155	180	615	1.00	1.16	3.97	RSCR	ST/OC/FC	9	290
HPL21YE-5-L	155	180	615	1.04	1.2	4.11	RSCR	ST/OC/FC	8.9	290
HSL21YE-5	155	180	615	1.04	1.21	4.13	RSIR	ST/OC/FC	9	290
HPL23YE-5	171	199	635	1.1	1.27	4.35	RSCR	ST/OC/FC	9.5	290
HPL23YE-5-K	171	199	679	1.14	1.19	4.52	RSCR	ST/OC/FC	9	290
HSL23YE-5	171	199	679	1.06	1.16	4.21	RSIR	ST/OC/FC	9.3	290
HGH23YE-5	581	676	2306	1.94	2.25	7.69	CSIR	OC/FC	9.3	290
HKL25YE-5	180	209	714	0.97	1.19	3.84	CSIR	ST/OC/FC	9.5	290
HPL25YE-5-K	180	209	714	1.22	1.29	4.86	RSCR	ST/OC/FC	9	290
HPL25YE-5-L	180	209	714	1.07	1.31	4.23	RSCR	ST/OC/FC	9	290
HGH25YE-5	631	734	2504	1.88	2.19	7.47	CSIR	OC/FC	9.5	290
HKL27YE-5	210	244	833	1.01	1.17	4.27	CSIR	ST/OC/FC	9.5	290
HPL27YE-5	210	244	833	1.01	1.31	4.63	RSCR	ST/OC/FC	9.5	290
HPL27YE-5-K	210	244	833	1.01	1.2	4.90	RSCR	ST/OC/FC	9	290
HSL27YE-5	210	244	833	1.01	1.2	4.32	RSIR	ST/OC/FC	9.5	290
HSL27YE-5A	210	244	833	1.01	1.22	4.32	RSIR	ST/OC/FC	9.5	290
HKH27YE-5	732	851	2817	1.92	2.23	7.61	CSIR	OC/FC	9.5	290
HSH27YE-5	732	851	2817	1.88	2.19	7.47	RSIR	OC/FC	9.5	290
HKL30YE-5	230	267	913	1.01	1.1	3.61	CSIR	ST/OC/FC	9.5	290
HPL30YE-5-K	230	267	913	1.01	1.28	4.75	RSCR	ST/OC/FC	9	290
HSL30YE-5	230	267	913	1.01	1.05	3.61	RSIR	ST/OC/FC	9.5	290
HSH30YE-5	780	907	3095	1.01	2.13	6.57	RSIR	OC/FC	9.5	290
HKL30YE-5	230	267	913	1.01	1.1	3.61	CSIR	ST/OC/FC	9.5	290
HPL30YE-5-K	230	267	913	1.01	1.28	4.41	RSCR	ST/OC/FC	9	290
HSL30YE-5	230	267	913	1.01	1.05	3.61	RSIR	ST/OC/FC	9.5	290

Private Picture Copyright : WWW.MBSM.PRO

2. ELECTRIC PARTS

1) COMPRESSOR

REFRIGERANT	R-12						
VOLTAGE(V/Hz)	110/60	115,120/60	127/60	220/60	220/50	230/50	240/50
COMP MODEL	X	X	CL23YE-2	PL21YE-4	SL27YE-5		
PART CODE	X	X	3957123A20	3956121A40	3954127A50		
STARTING TYPE	X	X	CSIR	RSCR	RSIR		

REFRIGERANT	R-134a						
VOLTAGE(V/Hz)	110/60	115,120/60	127/60	220/60	220/50	230/50	240/50
COMP MODEL	HEL18YH-1	<	HEL21YH-1	X	HPL23YH-5	<	<
PART CODE	3953118S10	<	3953121S10	X	3956123S50	<	<
STARTING TYPE	RSCR	<	RSCR	X	RSCR	<	<

2) RELAY

REFRIGERANT		R-12						
VOLTAGE(V/Hz)		110/60	115,120/60	127/60	220/60	220/50	230/50	240/50
ASSY	TYPE NAME	X	X	414THBYY-52	197SHBYY-52	232THBYY-52	<	<
	PART CODE	X	X	3018120700	3018118130	3018119970	<	<
PTC	RESISTANCE	X	X	S068	S330	S220	<	<
OVER LOAD	PART NAME	X	X	414THB	197SHB	232THB	<	<

Private Picture Copyright: WWW.MBSM.PRO



Private Picture Copyright: WWW.MBSM.PRO

Mbsm_dot_pro_private_PDF_HPL23YH-5Télécharger
Mbsm_dot_pro_private_PDF_HPL23YH-5-Télécharger
Mbsm_dot_pro_private_PDF_HPL23YH-5-2Télécharger
Mbsm_dot_pro_private_PDF_HPL23YH-5-3Télécharger

Mbsm.pro, PDF, Compressor, Hitachi,
Fl 0739 (90 Watts), Fl 0847 (105
Watts), Fl 1152 (125 Watts), Fl 1257
(150 Watts), Fl 1462 (165 Watts), Fl
1675 (185 Watts), Fl 1888 (210
Watts), Fl 2088 (250 Watts)

Category: Files

written by www.mbsm.pro | 18 January 2021





Private Picture Copyright : WWW.MBSM.PRO

Mbsm_dot_pro_private_PDF_FL1462-SA_Hitachi-catalogueTélécharger

Mbsm_dot_pro_private_PDF_FL1462-

SA_Mbsm_dot_pro_private_PDF_P_COM008_105_spec-1Télécharger

ELECTROLUX, CUBIGEL, Compresseur, GL90TB, R-134a, 1 / 4HP++ (big), 230V, RSCR, HMBP

Category: compressor

written by www.mbsm.pro | 18 January 2021



Private Picture Copyright : WWW.MBSM.PRO

 **Electrolux**
COMPRESSORS

GL90BH 03011
220 - 240 V ~ 50 Hz

R134a



 7625
0008146

Compressor ELECTROLUX \ CUBIGEL GL90TB

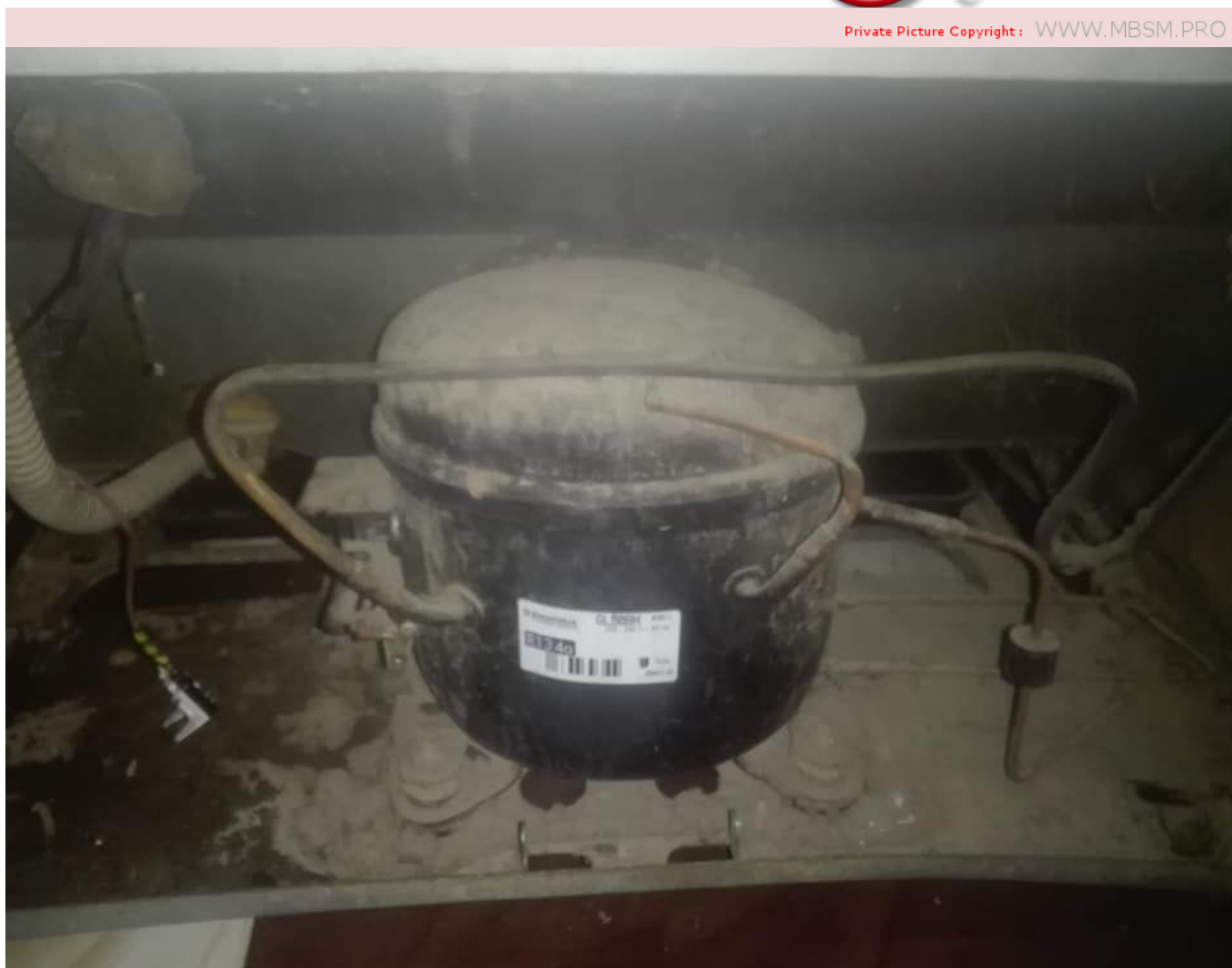
Substitutes for this compressor are: [Aspera NEK6170Z](#) , Danfoss/Secop FR10G , L'Unite Hermetique/Tecumseh AE4430Y

Refrigerant	R134A
Working range [C]	-25 to +10
Power supply	220V 50Hz
Engine type	CSIR
Power [HP]	1/4
Cylinder capacity [cm³]	8,9
Weight [kg]	10,8

Refrigerant: R134A



Private Picture Copyright : WWW.MBSM.PRO



Private Picture Copyright : WWW.MBSM.PRO

Type: Compresseurs à pistons hermétiques

Producteur: ACC

Série: HMBP

Modèle: GL90BH

Données GENERALES

Réfrigérant: R134a
Élément de décharge: C
Refroidissement: 0C
Température ambiante maximale [°C]: 43

Données du compresseur

Cylindrée [cm³]: 9,1
Déplacement [m³ / h]: 1,6
Poids [kg]: 11,1
Charge d'huile [cm³]: 470
Type d'huile: ISO VG 19 ESTER

Données du moteur

Type de moteur: RSCR
Puissance [KM]: 1/4
Élément de départ: LST
Source de courant: 220V 50Hz
Gamme de tension: 187-264
Courant rotor bloqué [A]: 13,8
Résistance d'enroulement en marche (25 ° C) [Ω]: 8,97
Résistance d'enroulement de démarrage (25 ° C) [Ω]: 18,05

Données électriques

Relais: 3003
Élément de blindage:
Volume du condensateur de démarrage [µF]: 6/400

Connexions

	millimètres	pouces
Le tube d'aspiration:	6,5	
Tube de service:	6,5	
Tube de décharge:	4,9	
Tube de refroidisseur d'huile:		4,9

[Mbsm_dot_pro_private_PDF_Cubigel_Brochure_-320102MTélécharger](#)

[Mbsm_dot_pro_private_PDF_compresseur-acc-cubigell-gl90tbTélécharger](#)

Capacité de refroidissement [W]

t _c \ t _e	-35	-30	-25	-20	-15	-dix
40	114	162	218	282	355	435
45	104	148	200	261	330	407
50	93	134	183	240	305	379
55	82	119	165	219	281	351

60 72 105 147 198 256 323

Puissance absorbée [W]

$t_c \backslash t_e$	-35	-30	-25	-20	-15	-dix
40	123	145	167	189	212	235
45	122	145	168	192	216	240
50	121	145	170	195	220	245
55	120	145	171	197	223	250
60	119	146	173	200	227	255

Actuel [A]

$t_c \backslash t_e$	-35	-30	-25	-20	-15	-dix
40	0,64	0,75	0,85	0,95	1,05	1,14
45	0,63	0,74	0,86	0,96	1,06	1,16
50	0,62	0,74	0,86	0,97	1,08	1,18
55	0,61	0,74	0,86	0,98	1,09	1,20
60	0,60	0,73	0,86	0,99	1,10	1,22

Débit massique [kg / s]

$t_c \backslash t_e$	-35	-30	-25	-20	-15	-dix
40	0,55	0,85	1,23	1,68	2,20	2,80
45	0,48	0,77	1,14	1,58	2,09	2,67
50	0,41	0,69	1,04	1,47	1,97	2,54
55	0,34	0,61	0,95	1,36	1,85	2,41
60	0,27	0,52	0,86	1,26	1,73	2,28

COP [W / W]

$t_c \backslash t_e$	-35	-30	-25	-20	-15	-dix
40	0,93	1,12	1,31	1,49	1,67	1,85
45	0,85	1,02	1,19	1,36	1,53	1,70
50	0,77	0,92	1,08	1,23	1,39	1,55
55	0,69	0,82	0,96	1,11	1,26	1,40
60	0,60	0,72	0,85	0,99	1,13	1,26

Conditions de fonctionnement: ASHRAE

t_c – Température de condensation [°C]

t_e – Température d'évaporation [°C]

[Mbsm_dot_pro_private_PDFGL90BHTélécharger](#)

[Mbsm_dot_pro_private_PDF__GL90BHTélécharger](#)

[Mbsm_dot_pro_private_PDF_danfoss_GL90TG_R134a_230_60](#)

ASPERA, COMPRESSEUR, 1 / 3HP++ (Big),

NE6181E, CSIR, HMBP, R22, 220-240V

Category: compressor

written by www.mbsm.pro | 18 January 2021



Private Picture Copyright : WWW.MBSM.PRO



Private Picture Copyright : WWW.MBSM.PRO

NE6181E 1 / 3HP / R22

- **Détails techniques**

puissance 1/3 CV, cylindrée 7,28 cm³
220 / 240V 50Hz

- LIGNE LIQUIDE (DIAMÈTRE) : 1/4
- LIGNE D'ASPIRATION (DIAMÈTRE) : 5/16
- BRÈVE DESCRIPTION



Private Picture Copyright : WWW.MBSM.PRO

Mbsm_dot_pro_private_PDF_NE6181ETélécharger

Maintenance, chauffe, eau solaire, BSI, 300L

Category: Plomberie

written by www.mbsm.pro | 18 January 2021



BSI

BIOME SOLAR INDUSTRY

Private Picture Copyright : WWW.MBSM.PRO

Private Picture Copyright : WWW.MBSM.PRO



BSI

BIOME SOLAR INDUSTRY

Private Picture Copyright : WWW.MBSM.PRO

Private Picture Copyright : WWW.MBSM.PRO



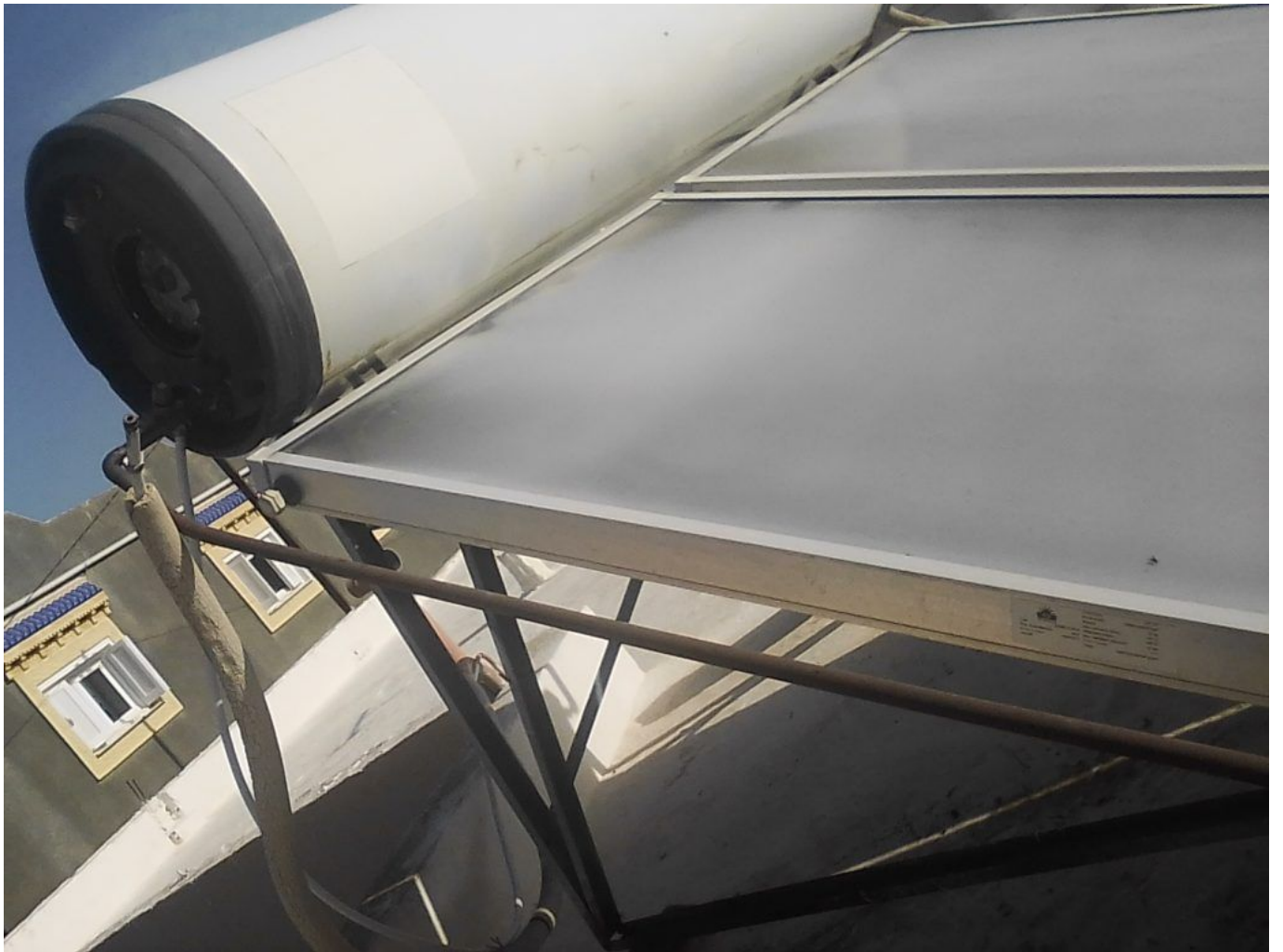
Private Picture Copyright: WWW.MBSM.PRO

Exif_JPEG_420



Private Picture Copyright: WWW.MBSM.PRO

Exif_JPEG_420



Private Picture Copyright: WWW.MBSM.PRO

Exif_JPEG_420



Type:

Year of production:

Serial number:

10411505

BIOME 6.0D-N

2014

14B003074

Gross area:

Dimensions:

Weight:

Max operation temp.:

Stagnation temp.:

Max operation pressure:

Fluid content:

Fluid:

2.01 m

1908x1058x75 mm

32 kg

120 °C

196 °C

10 bar

2.4 l

water-propylene glycol



Private Picture Copyright: WWW.MBSM.PRO

Exif_JPEG_420



Private Picture Copyright: WWW.MBSM.PRO

Exif_JPEG_420

**QB73C12GAW5, 185W, 1/4Hp , RSIR, Q
Series PANASONIC (Reciprocating Fixed
Speed), R134a, LBP**

Category: compressor

written by www.mbsm.pro | 18 January 2021

Specification

Item	Performance characteristics
Refrigerant	R134a
Displacement (cm ³)	7.3
Voltage (V)	220/240
Frequency (Hz)	50
Motor Type	RSIR
Capacity@ASHRAE	185
COP@ASHRAE	1.26/1.23
Capacity@CECOMAF	-
COP@CECOMAF	-

Private Picture Copyright: WWW.MBSM.PRO

QB73C12GAW5, 185W, 1/4Hp , RSIR, Q Series PANASONIC (Reciprocating Fixed Speed), R134a, LBP

**Compresseur, SC15B, R-12, 3/8HP, 230V
, 104L , 2830 ,220-240V ,50HZ ,1PH,
LBP/HBP ,Compressor DANFOSS**

Category: Technologie,Tester ok

written by www.mbsm.pro | 18 January 2021



Private Picture Copyright: WWW.MBSM.PRO

Compresseur SC15B R-12 3/8HP 230V , 104L , 2830 ,220-240V ,50HZ ,1PH, LBP/HBP ,Compressor DANFOSS

mbsm.pro , Compresseur Aspera ,
Embraco ,NEK2168GK , R404a/R507 , LBP
,3/4 HP,nominal output: 707 W

Category: Technologie,Tester ok
written by www.mbsm.pro | 18 January 2021



PictureS Mbsm Dot Pro : www.mbsm.pro

EMBRACO is a company specialized in cooling solutions and world leader in the hermetic compressor market. Our mission: provide innovative solutions for a better quality of life, always attentive to technological excellence and sustainability. Technological leadership, operational excellence and sustainability are some of the pillars which ensure the EMBRACO differential over other companies in the world market. Its products are now considered the favorite leading home appliance manufacturers by major automakers and are spotlighted by manufacturers of commercial refrigeration equipment. With global operations and production capacity exceeding 34 million units a year, the company offers solutions that are differentiated for their innovation and low energy consumption. Its 11.500 employees work in factories and offices located in Brazil (headquarters), China, Italy, Slovakia, Mexico, the United States and Russia. Energy efficiency is constantly sought in the processes, products and relationships with the communities where it operates. Our company is the absolute leader in this segment, being able to offer products that meet the most restrictive international standards regarding energy consumption.

As a worldwide leader, EMBRACO tries to anticipate market changes, and in doing so, our company is in a state of permanent transformation. We continuously assess our processes in order to maintain our leadership within the industry and promote growth, without forgetting the pillars of our organization.

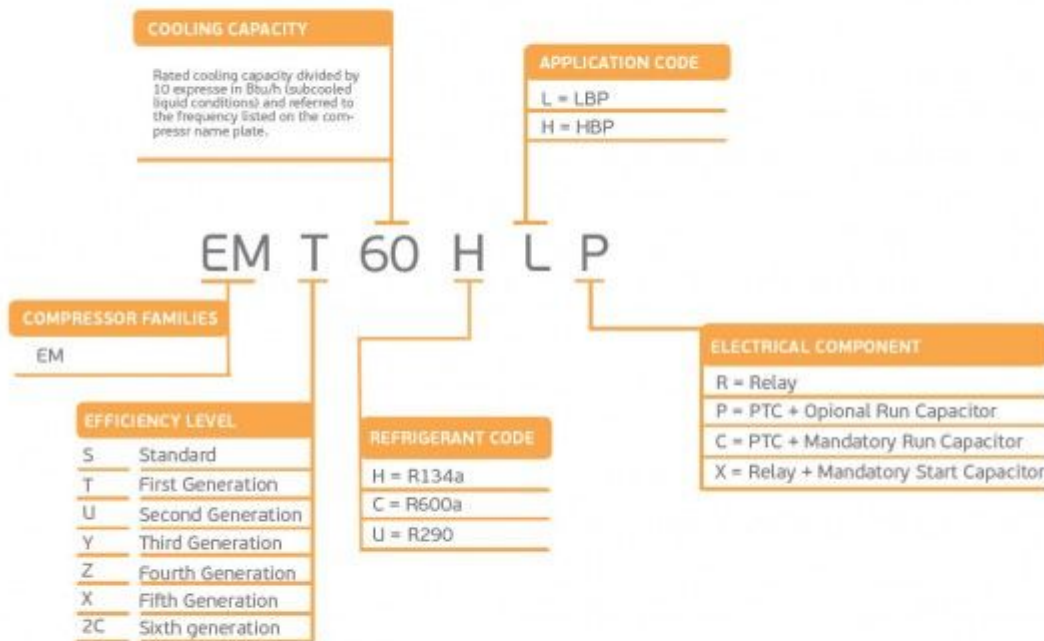
Compressor ASPERA NEK2168GK | NEK 2168 GK

Refrigerant	R404/R507
Working range[stC] LBP	-40 to -10
Nominal capacity [W] (evaporating temperature -23,3C, Condensing temperatur +54,4C)	688
Power supply	220-240V 50Hz
Engine type	CSIR
Displacement [cm ³]	14,28
Weight [kg]	11,6
Evaporating temperature +55 C	

Evaporating Temperature	Cooling Capacity +/-5%	Power Consumption +/-5%	Current Consumption +/-5%	Gas Flow Rate +/-5%	Efficiency +/-7%			
°C	(kcal/h)	(W)	(Btu/h)	(W)	(A)	(kg/h)	(kcal/Wh)	(W/W)
-40	226	263	897	370	3,46	6,01	0,61	0,71
-35	309	359	1.224	435	3,57	8,22	0,71	0,82
-30	413	481	1.640	506	3,73	11,06	0,82	0,95
-25	541	629	2.146	584	3,95	14,52	0,93	1,08
-20	691	803	2.740	668	4,21	18,64	1,03	1,20
-15	863	1.004	3.424	759	4,53	23,43	1,14	1,32
-10	1.058	1.230	4.197	856	4,90	28,92	1,24	1,44

Refrigerant: R404A, R507

		R404A / R507							
		LBP	VOLT. FREQ.	COOL. CAP. [W]	DISPL. [cc]	MBP	VOLT. FREQ.	COOL. CAP. [W]	DISPL. [cc]
NE NEK	NEK2117GK	A	125	4,51	NEK6144GK	A	550	4,51	
	NEK2121GK	A	151	5,44	NEK6165GK	A	743	6,20	
	NEK2125GK	A	182	6,20	NEK6181GK	A	841	7,28	
	NEK2130GK	A	213	7,37	NEK6210GK	A / N	1.005	8,77	
	NEK2134GK	A / N	248	8,77	NEK6213GK	A	1.337	12,11	
	NEK2150GK	A	329	12,11	NEK6217GK	A / N	1.164	14,28	
	NEK2168GK	A	378	14,28					
	NEK2172GK	C	819	16,80					



embraco **NEK**



R404A

LBP

PictureS Mbsm Dot Pro : www.mbsm.pro



Picture5 Mbsm Dot Pro : www.mbsm.pro

mbsm.pro , Compresseur Aspera , Embraco NEK2168GK , R404A , LBP ,3/4 HP
Compresseur hermetique de Aspera – Embraco NEK2168GK – R404A
3/4 HP
220-240V 50 Hz
Cylindrée = 14.3 CM3
APPLICATIONS = LBP
Moteur type: CSR