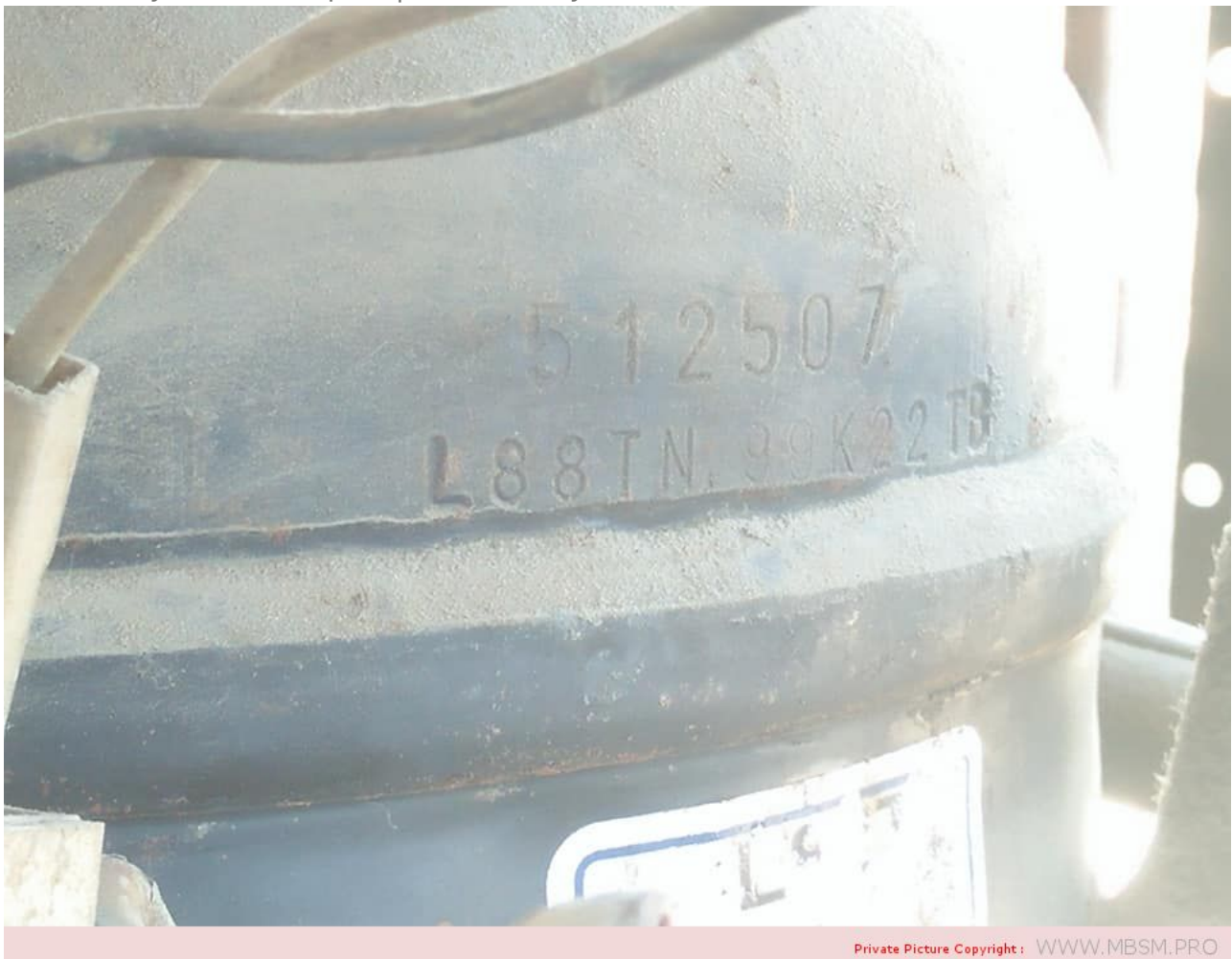


Mbsm.pro, Hermetic, Compressor,  
Electrolux, L88TN, 3/8 Hp ++, R-22,  
HMBP, Q=416W, tk-15°C/, tc55, 230V  
50Hz, L88TN , ACC, ALPENINOX, ASCASO,  
BARLINE ,L88TN, CUBIGEL, EUNASA,  
EURFRIGOR , GEV, ICEMATIC, ITV,  
SCOTSMAN, SIMAG, ZANUSSI

Category: compressor

written by [www.mbsm.pro](http://www.mbsm.pro) | 16 January 2022



Private Picture Copyright : [WWW.MBSM.PRO](http://WWW.MBSM.PRO)

Mbsm.pro, Hermetic, Compressor, Electrolux, L88TN, 3/8 Hp ++, R-22, HMBP,  
Q=416W, tk-15°C/, tc55, 230V 50Hz, L88TN , ACC, ALPENINOX, ASCASO, BARLINE  
,L88TN, CUBIGEL, EUNASA, EURFRIGOR , GEV, ICEMATIC, ITV, SCOTSMAN, SIMAG,  
ZANUSSI

---

Mbsm.pro, Compressor, Hermetic,

# Tecumseh, AEZ9440T, R22, 1/3 hp++, MHP

Category: compressor

written by [www.mbsm.pro](http://www.mbsm.pro) | 16 January 2022



Private Picture Copyright : [WWW.MBSM.PRO](http://WWW.MBSM.PRO)

## Basic Info.

Model NO.AEZ9440TLubrication StyleLubricatedCooling SystemAir CoolingCylinder ArrangementBalanced Opposed ArrangementCylinder PositionHorizontalStructure TypeClosed TypeCompress LevelSingle-StageRefrigerant TypeFreonTypeReciprocatingPerformanceLow NoiseDrive ModeElectricPower SourceAC Power ConfigurationStationaryMaterialCopperPiston TypeClosedTrademarkTecumseh HermetiqueTransport PackagePalletSpecificationCE / RoHsOriginChinaHS Code8414301900

## Product Description

Tecumseh Hermetique R134a / R404a/ R22 reciprocating compressor

Hermetique R22

HBP

For Air  
Conditioning  
Applications.

Features:

Anti Vibration  
mounts supplied  
Charged with  
mineral oil and  
dry nitrogen

Crankcase  
heater on TAG  
models

Fan cooling  
required on all  
models

Specifications:

Capacity Rating

Basis: 35°C

Ambient, 11K

Return Gas

Superheat,

54.5°C

Condensing,

46.2°C Liquid

entering

Expansion

Valve.

Current FLA are  
given at  
nominal  
voltage, rated  
conditions and  
7.2°C

Evaporating  
Temperature.

Motor Types:

PSC = Permanent

Split

Capacitor, 1

Phase, 50 Hz.

220-240 Volt

3Ø: 3 Phase, 50

Hz, 400 Volt

Expansion

Device:

C = Capillary

Tube

C/V = Capillary

Tube or

Expansion Valve

R22 Hermetic

Model No.	Nominal HP	Displ. cm <sup>3</sup> /rev	Motor Type	Nominal Current FLA	Exp. Device	Oil Charge cm <sup>3</sup>	Connections: inches		
cm <sup>3</sup>	Discharge Proc.								
AE 5465E	1/2	12.05	PSC	3.2	C	450	3/8 Tube	1/4 Tube	3/8 Tube
AJ 5510F	3/4	18.6	PSC	5.2	C	887	3/8 Tube	1/4 Tube	1/4 Tube
AJ 5512E	1	21.75	PSC	5.9	C	887	3/8 Tube	1/4 Tube	1/4 Tube
AJ 5513E	1	24.2	PSC	6	C	887	3/8 Tube	1/4 Tube	1/4 Tube
AJ 5515E	1 1/4	25.95	PSC	7.2	C	887	1/2 Tube	5/16 Tube	1/4 Tube
AJ 5518E	1 1/2	32.7	PSC	9.3	C	887	1/2 Tube	5/16 Tube	1/4 Tube

AJ 5519E	1 1/2	34.45	PSC	9.96	C	887	1/2 Tube	5/16 Tube	1/4 Tube
FH 5522E	1 3/4	39.95	PSC	9	C	1330	5/8 Tube	3/8 Tube	5/16 Tube
TFH 5522E	1 3/4	39.95	3Ø	3.8	C/V	1330	5/8 Tube	3/8 Tube	5/16 Tube
FH 5524E	2	43.5	PSC	10	C	1330	5/8 Tube	3/8 Tube	5/16 Tube
TFH 5524E	2	43.5	3Ø	4	C/V	1330	5/8 Tube	3/8 Tube	5/16 Tube
FH 5527E	2 1/4	49.1	PSC	12	C	1330	5/8 Tube	3/8 Tube	5/16 Tube
TFH 5527E	2 1/4	49.1	3Ø	4.2	C/V	1330	5/8 Tube	3/8 Tube	5/16 Tube
FH 5531E	2 1/2	56.65	PSC	14.1	C	1330	3/4 Tube	3/8 Tube	5/16 Tube
TFH 5531E	2 1/2	56.65	3Ø	8	C/V	1330	3/4 Tube	3/8 Tube	5/16 Tube
FH5540E	3	74.25	PSC	18.6	C	1330	3/4 Tube	3/8 Tube	5/16 Tube
TFH 5540E	3	74.25	3Ø	6	C/V	1330	3/4 Tube	3/8 Tube	5/16 Tube
TFH 5540E	3	74.25	3Ø	6	C/V	1330	78	1/2 Valve	5/16 Tube
TAG 5546E	3 3/4	90.2	3Ø	6.6	C/V	1960	7/8 Tube	1/2 Tube	3/8 Tube
TAG 5553E	4	100.7	3Ø	7.4	C/V	1960	7/8 Tube	1/2 Tube	3/8 Tube
TAG 5561E	5	112.5	3Ø	9	C/V	1960	7/8 Tube	1/2 Tube	3/8 Tube
TAG 5568E	6	124.4	3Ø	9.6	C/V	1960	7/8 Tube	1/2 Tube	3/8 Tube
TAG 5573E	6 1/2	134.8	3Ø	11	C/V	1960	7/8 Tube	1/2 Tube	3/8 Tube

Hermetique R22  
M/HBP  
For Medium /  
High  
Temperature  
Applications  
Features:  
Anti-Vibration  
mounts supplied  
Charged with  
mineral oil and  
dry nitrogen  
Rotalock  
suction valve  
on CAJ/TAJ  
models  
Crankcase  
heater on  
FH/TFH and TAG  
models  
Oil sight glass  
on FH/TFH and  
TAG models  
Fan cooling  
required on all  
models  
All models suit  
capillary tube  
or expansion  
valve operation

Rotalock  
suction and  
discharge  
valves on  
FH/TFH and TAG  
models

Specifications:

Capacity Rating  
Basis: 35°C  
Ambient, 11K  
Return Gas  
Superheat,  
54.5°C  
Condensing,  
46°C Liquid  
entering  
Expansion  
Valve.

Current FLA are  
given at  
nominal  
voltage, rated  
conditions and  
7.2°C  
evaporating  
temperature.

Motor Types:

CSIR: Capacitor  
start,  
Induction run }  
1 Phase, 50 Hz,  
220-240 Volt

CSR: Capacitor  
start and run  
3Ø: 3 Phase, 50  
Hz, 400 Volt

Conversion:  
Watts x 3.412 =  
BTU/Hr BTU/Hr x  
0.293 = Watts

R22 Hermetic

Model No.	Nominal HP	Displ. cm <sup>3</sup> /rev	Motor Type	Nominal Oil Current FLA	Oil Charge cm <sup>3</sup>	Connections: inches	
	Suction	Discharge					
AEZ 4425E	1/5	4.5	CSIR	1.75	450	1/4 Tube	3/16 Tube
AEZ 4430E	1/4	5.7	CSIR	2.2	450	1/4 Tube	3/16 Tube
AEZ 4440E	1/3	7.55	CSIR	2.6	450	1/4 Tube	3/16 Tube
AEZ 9440T	1/3	7.55	CSR	2.03	450	3/8 Tube	1/4 Tube
CAE 4450E	3/8	9.4	CSIR	3.3	450	3/8 Tube	1/4 Tube
CAE 9450T	3/8	9.5	CSR	2.6	450	3/8 Tube	1/4 Tube
CAE 9460T	1/2	11.3	CSR	3.2	450	3/8 Tube	1/4 Tube
CAJ 9408T	5/8	15.2	CSR	3.68	887	1/2 Valve	5/16 Tube
CAJ 9510T	1	18.3	CSR	4.8	887	5/8 Valve	5/16 Tube
CAJ 9513T	1 1/8	24.2	CSR	5.9	887	5/8 Valve	5/16 Tube
CAJ 4517E	1 1/4	25.95	CSR	6.1	887	5/8 Valve	3/8 Tube
TAJ 4517T	1 1/2	25.95	3Ø	2.5	887	5/8 Valve	3/8 Tube
TAJ 4519T	1 1/2	34.45	3Ø	3.5	887	5/8 Valve	1/2 Valve
FH 4524F	2	43.5	CSR	9.55	1480	5/8 Valve	1/2 Valve
TFH 4524F	2	4.35	3Ø	3.9	1480	7/8 Valve	1/2 Valve
FH 4531F	2 1/2	56.65	CSR	12.6	1480	7/8 Valve	1/2 Valve
TFH4531F	2 1/2	56.65	3Ø	4.75	1480	7/8 Valve	1/2 Valve
TFH 4540F	3	74.25	3Ø	6.08	1480	7/8 Valve	1/2 Valve
TAG 4546T	4	90.2	3Ø	6.6	1960	7/8 Valve	5/8 Valve
TAG 4553T	4 1/2	100.7	3Ø	7.4	1960	7/8 Valve	5/8 Valve

TAG 4561T	5	112.5	30	9	1960	1 7/8 Valve	5/8 Valve
TAG 4568T	6	124.4	30	9.6	1960	1 7/8 Valve	5/8 Valve
TAG 4573T	6 1/2	134.8	30	11	1960	1 7/8 Valve	5/8 Valve

Tecumseh  
Hermetique  
R134a

The world  
renowned  
L'Unite  
Hermetique  
compressors are  
manufactured by  
Tecumseh.

Features:

Charged with  
polyolester oil  
and dry  
nitrogen

Crankcase  
heater on  
FH/TFH and TAG  
models

Oil sight glass  
on FH/TFH and  
TAG models

Rotalock valves  
are included  
for all valve  
connection  
compressors

Anti-vibration  
mounts supplied

Single Phase –  
Medium High SST

Model No.	Nominal HP	Displacement: cm3/rev	Cooling	Oil Charge: ml
CAJ4476Y	5/8	21.75	Fan	887
CAJ4492Y	3/9	25.95	Fan	887
CAJ4511Y	1	32.7	Fan	887
FH4518Y	1 1/2	53.2	Fan	1480
FH4525Y	2	74.25	Fan	1480

Three Phase –  
Medium High SST

Model No.	Nominal HP	Displacement: cm3/rev	Cooling	Oil Charge: ml
TAJ4511Y	1	32.7	Fan	887
TFH4518Y	1 1/2	53.2	Fan	1480
TFH4525Y	2	74.25	Fan	1480
TAG4528Y	2 1/2	90.2	Fan	1960
TAG4534Y	2 3/4	100.7	Fan	1960
TAG4537Y	3	112.5	Fan	1960
TAG4543Y	3 1/2	124.4	Fan	1960

Superceded  
Models

Model No.	Nominal HP	Displacement: cm3/rev	Cooling	Oil Charge: ml
AEZ4425Y	1/5	7.55	Fan	450
AEZ4430Y	1/4	8.85	Fan	450

CAE4440Y	3/8	12.05	Fan	450
CAE4448Y	1/3	14.15	Fan	450
CAJ4452Y	1/3	15.2	Fan	887
CAE4456Y	1/2	16	Fan	450
CAJ4461Y	1/2	18.3	Fan	887

Tecumseh  
Hermetique  
R404A

The world  
renowned  
L'Unite  
Hermetique  
compressors are  
manufactured by  
Tecumseh.

Features:

Charged with  
polyolester oil  
and dry  
nitrogen

Crankcase  
heater on  
FH/TFH and TAG  
models

Oil sight glass  
on FH/TFH and  
TAG models

Rotalock valves  
are included  
for all valve  
connection  
compressors

Anti-vibration  
mounts supplied

Specifications:

Capacity Rating  
Basis: 35°C  
Ambient, 11K  
Return Gas  
Superheat,  
54.5°C  
Condensing,  
46°C Liquid  
entering  
Expansion  
Valve.

Current FLA are  
given at  
nominal  
voltage, rated  
conditions and  
7.2°C

Evaporating  
Temperature.

Motor Types:

CSIR: Capacitor  
Start,  
Induction Run 1  
Phase, 50 Hz,  
220-240 Volt

CSR: Capacitor  
Start and Run  
3Ø: 3 Phase, 50  
Hz, 400 Volt

All models are  
also suitable  
for operation  
with R507

Single Phase –  
Medium High SST

Model No.	Nominal HP	Displacement: cm <sup>3</sup> /rev	Cooling	Oil Charge: ml
CAJ9480Z	5/8	15.2	Fan	887
CAJ9510Z	1	18.3	Fan	887
CAJ9513Z	1 1/8	24.2	Fan	887
CAJ4517Z	1 1/4	25.95	Fan	887
CAJ4519Z	1 1/2	34.45	Fan	887
FH4522Z	1 3/4	39.95	Fan	1480
FH4524Z	2	43.5	Fan	1480
FH4531Z	2 1/2	56.65	Fan	1480
FH4540Z	3	74.25	Fan	1480

Three Phase –  
Medium High SST

Model No.	Nominal HP	Displacement: cm <sup>3</sup> /rev	Cooling	Oil Charge: ml
TAJ9480Z	5/8	15.2	Fan	887
TAJ9510Z	1	18.3	Fan	887
TAJ9513Z	1 1/8	24.2	Fan	887
TAJ4517Z	1 1/4	25.95	Fan	887
TAJ4519Z	1 1/2	34.45	Fan	887
TFH4522Z	1 3/4	39.95	Fan	1480
TFH4524Z	2	43.5	Fan	1480
TFH4531Z	2 1/2	56.65	Fan	1480
TFH4540Z	3	74.25	Fan	1480
TAG4546Z	4	90.2	Fan	1960
TAG4553Z	4 1/2	100.7	Fan	1960
TAG4561Z	5	112.5	Fan	1960
TAG4568Z	6	124.4	Fan	1960
TAG4573Z	6 1/2	134.8	Fan	1960

Single Phase –  
Low SST

Model No.	Nominal HP	Displacement: cm <sup>3</sup> /rev	Cooling	Oil Charge: ml
CAE2417Z	1/3	11.3	Fan	450
CAE2420Z	1/2	12.54	Fan	450
CAE2424Z	5/8	15	Fan	450
CAJ2428Z	1/2	15.2	Fan	887
CAJ2432Z	5/8	18.3	Fan	887
CAJ2446Z	3/4	26.15	Fan	887
CAJ2464Z	1 1/2	34.45	Fan	887
FH2480Z	2	53.2	Fan	1625
FH2511Z	2 1/2	74.25	Fan	1625

Three Phase –  
Low SST

Model No.	Nominal HP	Displacement: cm <sup>3</sup> /rev	Cooling	Oil Charge: ml
TAJ2464Z	1 1/2	34.45	Fan	887

TFH2480Z	2	53.2	Fan	1625
TFH2511Z	2 1/2	74.25	Fan	1625
TAG2516Z	4	112.5	Fan	1960
TAG2522Z	5 1/2	134.8	Fan	1960

Three Phase –  
Parallel  
Applications

Model No.	Nominal HP	Displacement: cm3/rev	Application: SST	Cooling	Oil Charge: ml
TAGP4546Z	4	90.2	Medium	Fan	1960
TAGP4553Z	4 1/2	100.7	Medium	Fan	1960
TAGP4561Z	5	112.5	Medium	Fan	1960
TAGP4568Z	6	124.4	Medium	Fan	1960
TAGP4573Z	6 1/2	134.8	Medium	Fan	1960
TAGP2516Z	4	112.5	Low	Fan	1960
TAGP2522Z	5 1/2	134.8	Low	Fan	1960



Private Picture Copyright : [WWW.MBSM.PRO](http://WWW.MBSM.PRO)

**MEDIUM/HIGH BAK PRESSURE COMPRESSORS**

Type	COMPRESSOR MODELS	Nominal Power (H.P.)	Refrigerant		REFRIGERATION CAPACITY AT 50HZ Rafed 54.5°C Cond Temp (Watts)						VOLTAGE	
			Displacement (cm³)	Oil charge (cm³)	Evaporating Temperature							
					-25°C	-15°C	-10°C	0°C	+7.2°C	+15°C		
PISTON	AEZ4425E	1/5	R22	4.50	250	138	192	256	413	553	728	220-240V/1/50Hz
	AEZ4430E	1/4	R22	5.70	250	192	255	336	538	718	945	220-240V/1/50Hz
	AEZ3440E	1/3	R22	7.55	350	308	362	464	733	980	1298	220-240V/1/50Hz
	AEZ4440E	1/3	R22	7.55	350	308	362	464	733	980	1298	220-240V/1/50Hz
	AEZ9440T	1/3	R22	7.55	350	222	362	464	733	975	1302	220-240V/1/50Hz
	CAE4450E	3/7	R22	9.40	350	355	426	554	896	1212	1623	220-240V/1/50Hz
	CAE9450T	3/7	R22	9.40	350	256	426	554	896	1212	1623	220-240V/1/50Hz
	CAE9460T	1/2	R22	11.30	350	324	553	715	1134	1514	2000	220-240V/1/50Hz
	CAJ9480T TAJ9480T	5/8	R22	15.20	887	461	786	1011	1586	2103	2761	220-240V/1/50Hz 400V/3/50Hz
	CAJ9510T TAJ9510T	1	R22	18.30	887	545	956	1229	1909	2510	3266	220-240V/1/50Hz 400V/3/50Hz
	CAJ9513T TAJ9513T	1-1/8	R22	24.20	887	526	1074	1451	2411	3272	4366	220-240V/1/50Hz 400V/3/50Hz
	CAJ4517E TAJ4517T	1-1/4	R22	25.95	887	771	1233	1673	2727	3629	4743	220-240V/1/50Hz 400V/3/50Hz





Private Picture Copyright : [WWW.MBSM.PRO](http://WWW.MBSM.PRO)

Mbsm\_dot\_pro\_private\_PDF\_AEZ9440TTélécharger

---

Mbsm.pro, Motor, compressor, type,  
RSIR, RSCR, CSIR, CSCR, PSC

Category: compressor

written by [www.mbsm.pro](http://www.mbsm.pro) | 16 January 2022

(1) RSIR

Resistance start induction run

(2) RSCR

Resistance start capacitor run

(3) CSIR

Capacitor start induction run

(4) CSCR/CSR

Capacitor start capacitor run

(5) PSC

Permanent split capacitor

(1) RSIR

Resistance start induction run

(2) RSCR

Resistance start capacitor run

(3) CSIR

Capacitor start induction run

(4) CSCR/CSR

Capacitor start capacitor run

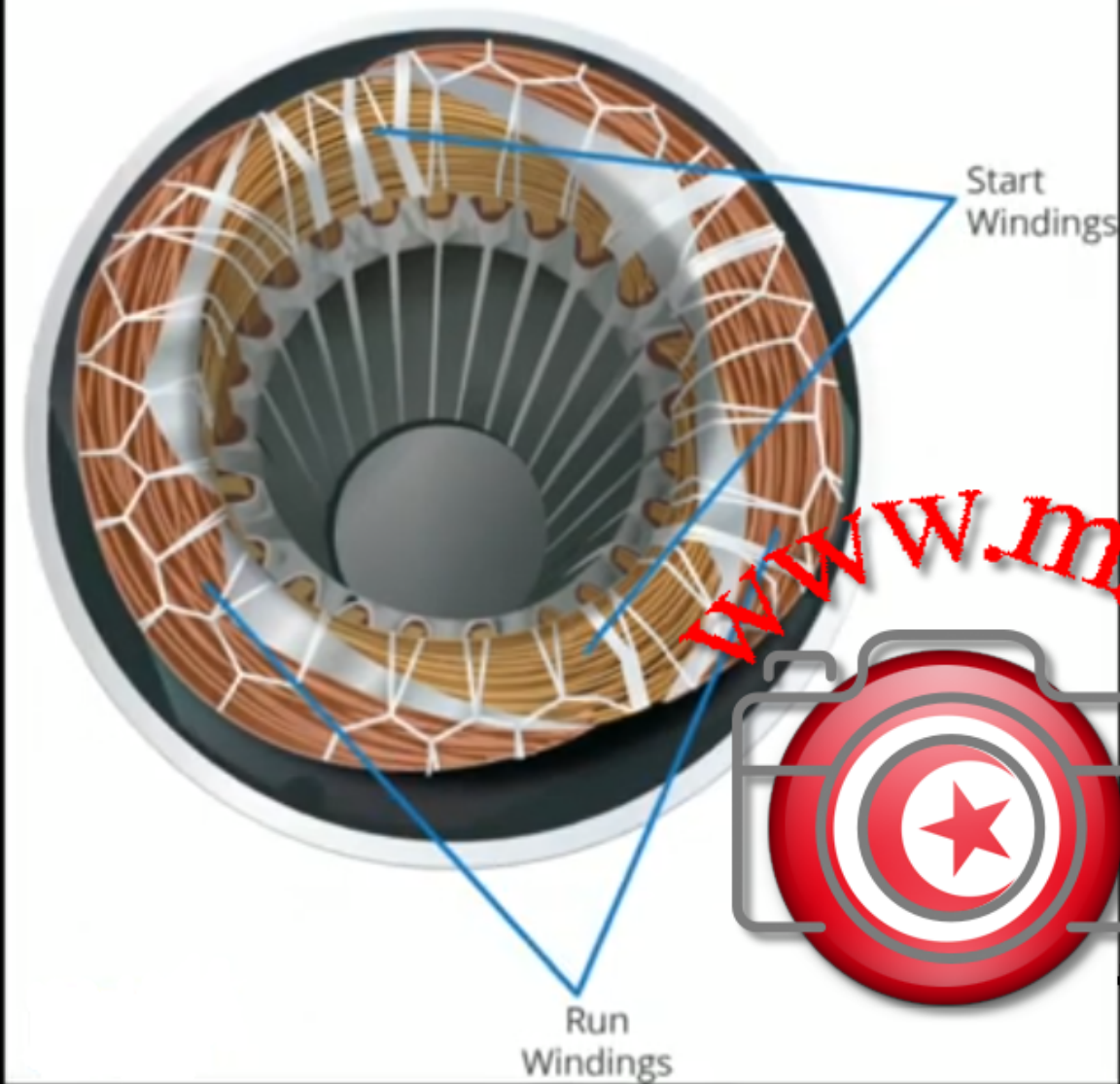
(5) PSC

Permanent split capacitor

Private Picture Copyright : [WWW.MBSM.PRO](http://WWW.MBSM.PRO)

Private Picture Copyright : [WWW.MBSM.PRO](http://WWW.MBSM.PRO)

# Compressor Windings



Private Picture Copyright: WWW.MBSM.PRO



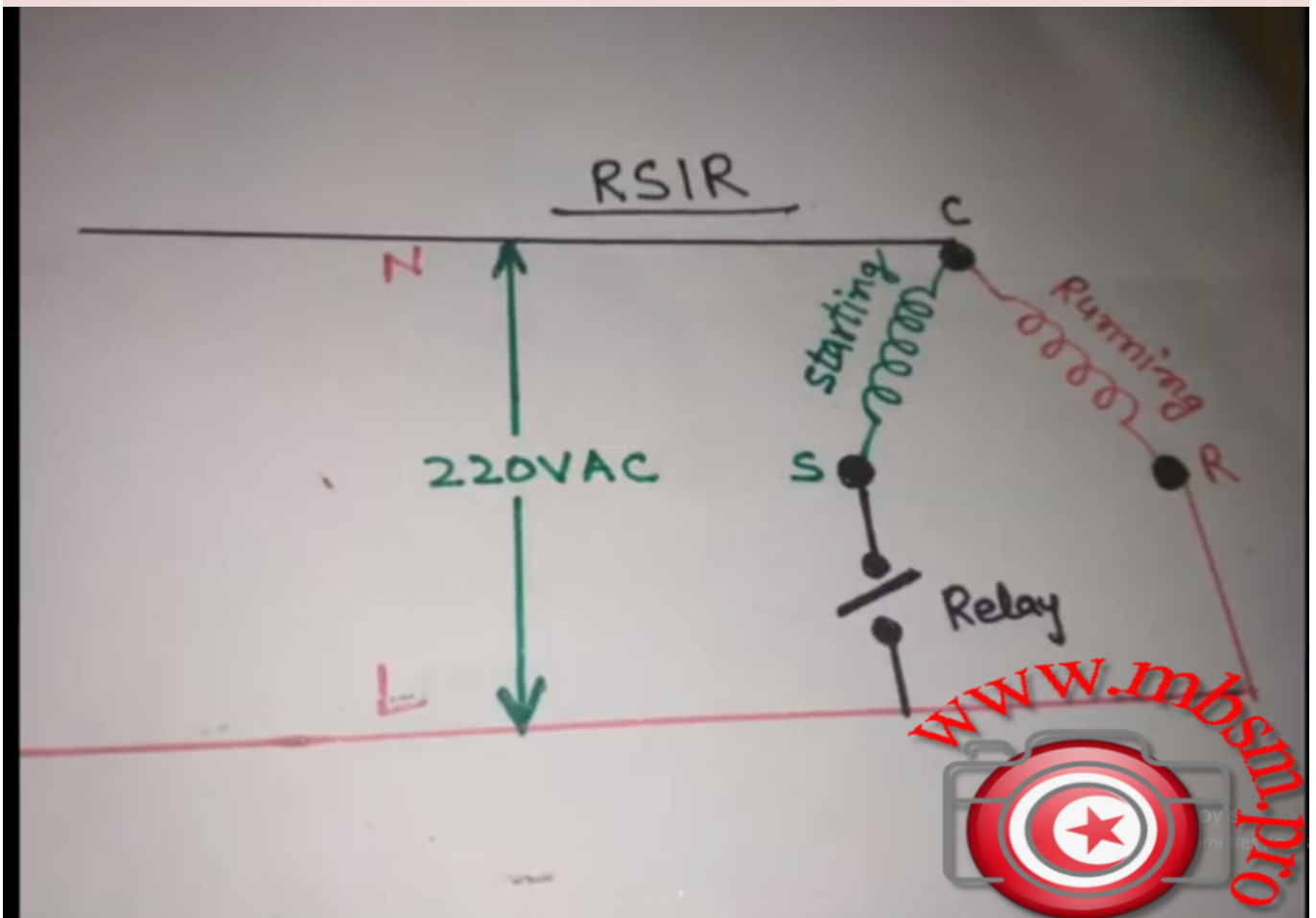
(1) RSIR  
Resistance start induction run

Private Picture Copyright: WWW.MBSM.PRO

# RSIR



Private Picture Copyright: WWW.MBSM.PRO



Private Picture Copyright: WWW.MBSM.PRO

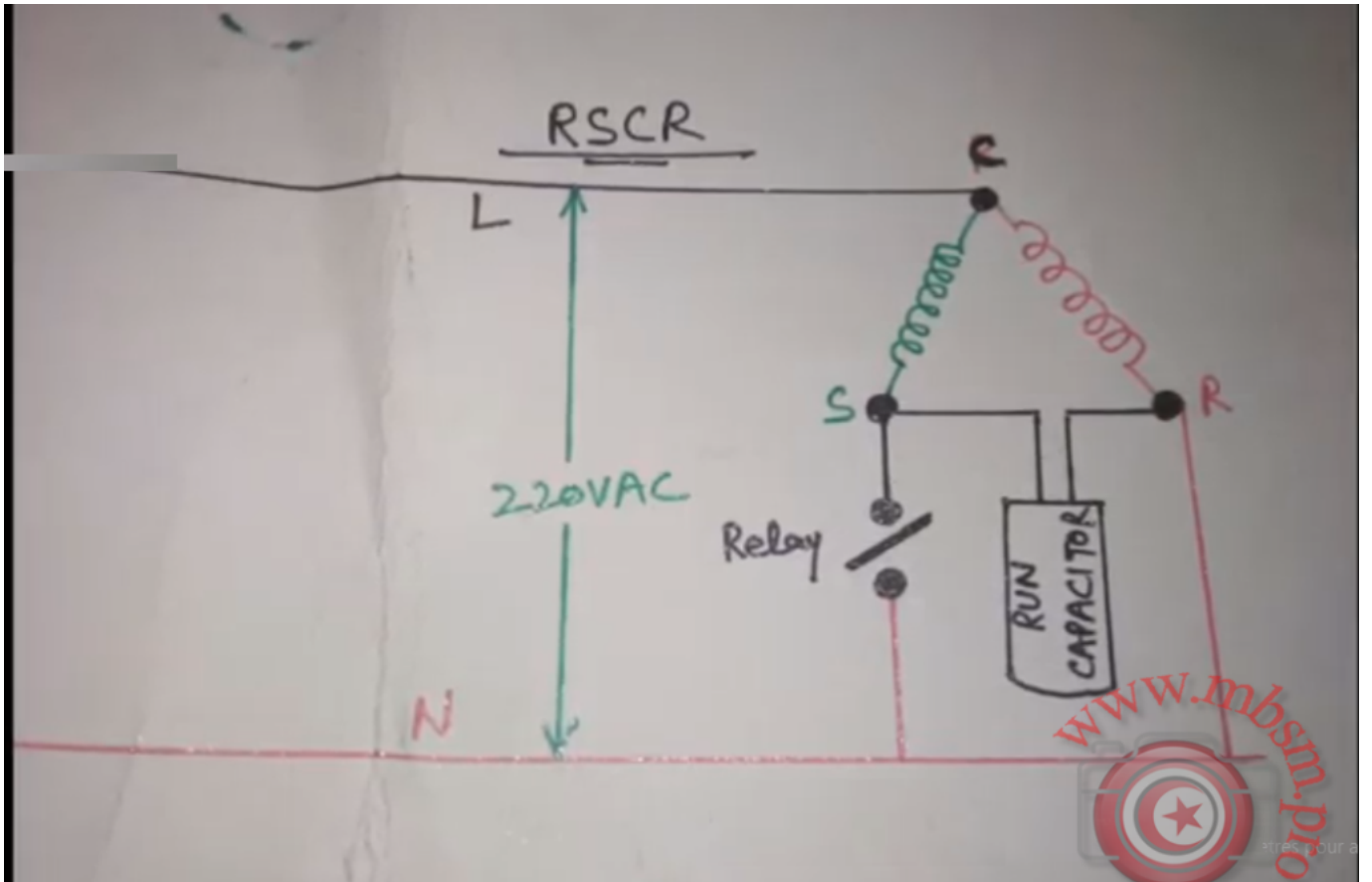
# (2) RSCR Resistance start capacitor run

Private Picture Copyright : WWW.MBSM.PRO

## RSCR



Private Picture Copyright : WWW.MBSM.PRO



Private Picture Copyright: WWW.MBSM.PRO

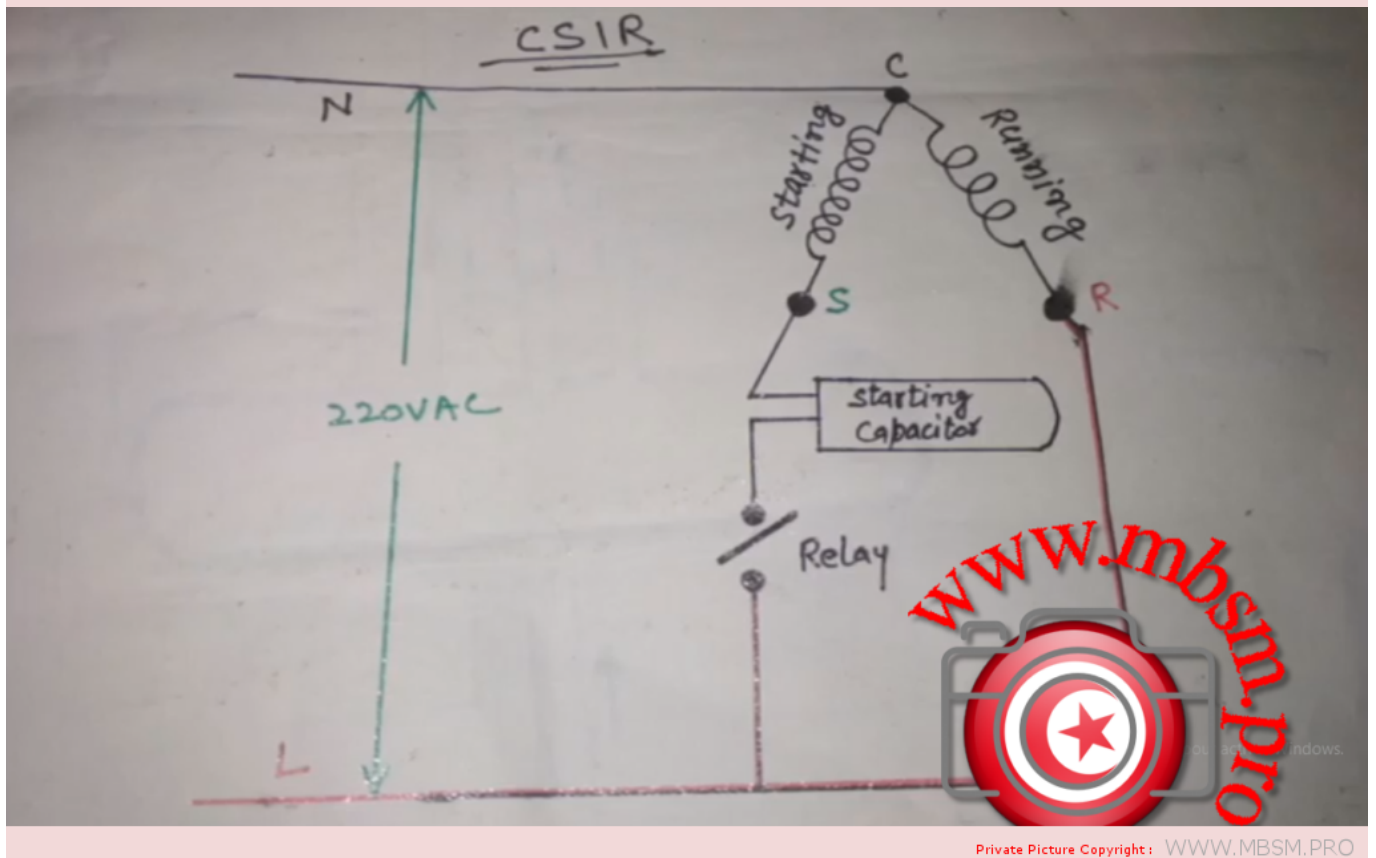
# (3) CSIR Capacitor start induction run

Private Picture Copyright: WWW.MBSM.PRO

# CSIR



Private Picture Copyright: WWW.MBSM.PRO



Private Picture Copyright: WWW.MBSM.PRO



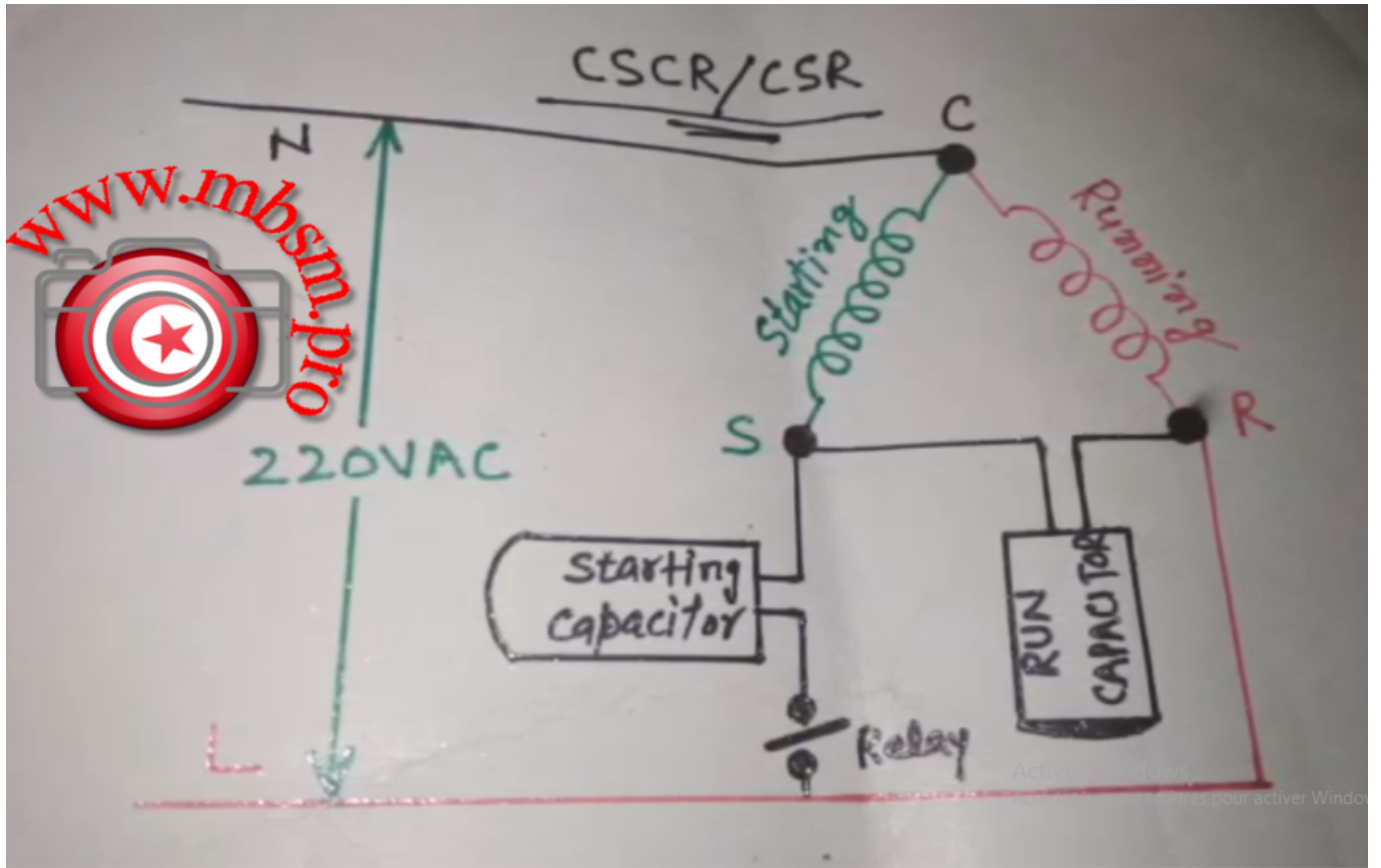
# (4) CSCR/CSR Capacitor start capacitor run

Private Picture Copyright: WWW.MBSM.PRO

## CSCR/CSR



Private Picture Copyright: WWW.MBSM.PRO



Private Picture Copyright: WWW.MBSM.PRO

www.mbsm.pro

# (5) PSC

## Permanent split capacitor

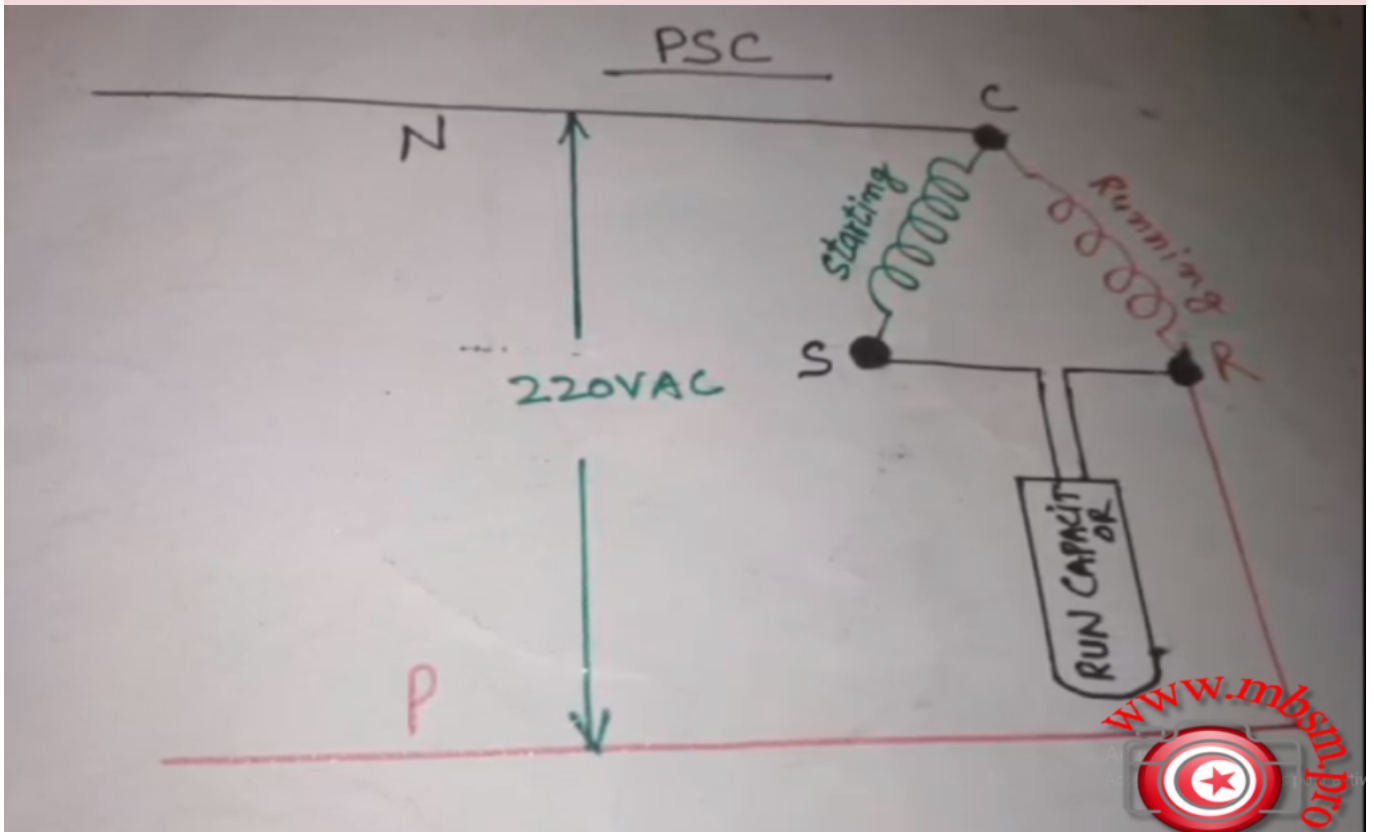
www.mbsm.pro

Private Picture Copyright: WWW.MBSM.PRO

# PSC



Private Picture Copyright: WWW.MBSM.PRO



Private Picture Copyright: WWW.MBSM.PRO

Mbsm.pro, COPLAND, Compressor,  
KCJ511HAE, KCJ511HAE-BXXX , HBP,  
1-3/8 hp big ++, R-22 , 230 V, 50 Hz,  
1PH , FAN, 350 ft3 / m

Category: compressor

written by www.mbsm.pro | 16 January 2022



Private Picture Copyright : [WWW.MBSM.PRO](http://WWW.MBSM.PRO)

### Technical Specification

Cooling Capacity (Btu/hr) 11275

Cooling Capacity (w) 3302

HP 1-3/8

LRA 54

COMPRESSOR MECHANICAL AND PHYSICAL DATA

Number of cylinders 2  
Displacement @ 50 Hz, cu.m/h 3.2  
Bore/Stroke, mm 3.5/1.9  
Length/Width, mm 235/179  
Height, mm 264  
Net Weight, kg 21.5  
Stub Suction, inch 5/16  
Stub Discharge, inch 5/16  
Oil Quantity, l 0.9  
Base mounting (hole dia), mm NA (0.0)  
Sound Pressure @ 1m (HT), dBA 57  
Sound Power (HT), dBA 68  
COMPRESSOR ELECTRICAL DATA (220/240V – 1~ – 50Hz)  
Locked Rotor Current, A 25  
Default Enclosure Class IP 21 (IEC 34)  
ACCESSORIES OPTIONAL  
Mounting Grommets Standard  
Single Phase Equipment Relay, Start and Run Capacitor



Private Picture Copyright: [WWW.MBSM.PRO](http://WWW.MBSM.PRO)

Horse Power

50HZ

Brand

COPLAND

Compressor Technology

HERMETIC

Model Name/Number

KCJ511HAE

Power

220V



Private Picture Copyright : [WWW.MBSM.PRO](http://WWW.MBSM.PRO)

[Mbsm\\_dot\\_pro\\_private\\_PDF\\_KCJ511HAETélécharger](#)  
[Mbsm\\_dot\\_pro\\_private\\_PDF\\_KCJ511HAE-1Télécharger](#)

---

## Saunier Duval C25E

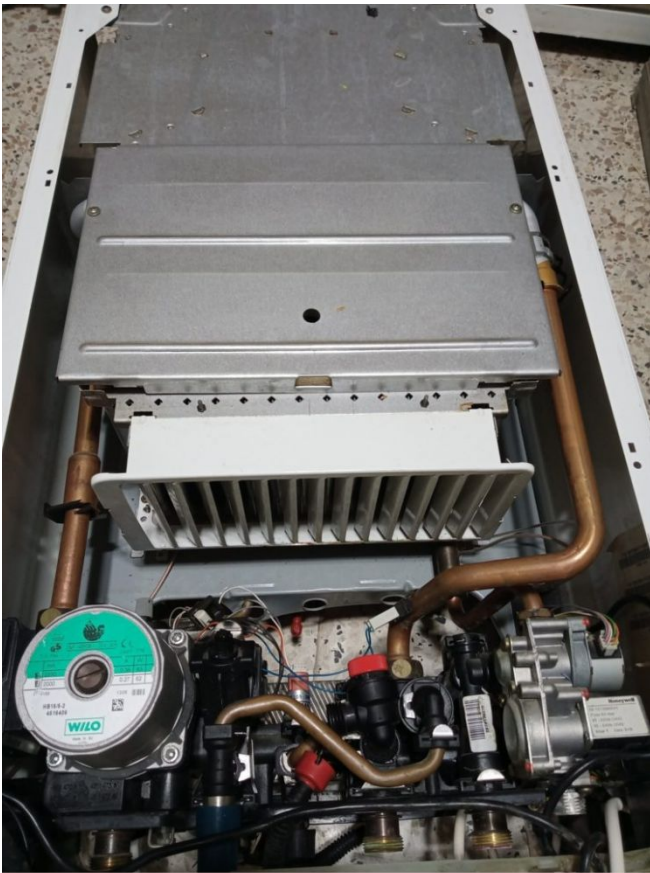
Category: Pictures

written by [www.mbsm.pro](http://www.mbsm.pro) | 16 January 2022





Private Picture Copyright: WWW.MBSM.PRO



Private Picture Copyright: WWW.MBSM.PRO

# Thermostat d'ambiance ,Thermostat de sécurité,Marque IMIT,Italie

Category: Pictures

written by [www.mbsm.pro](http://www.mbsm.pro) | 16 January 2022





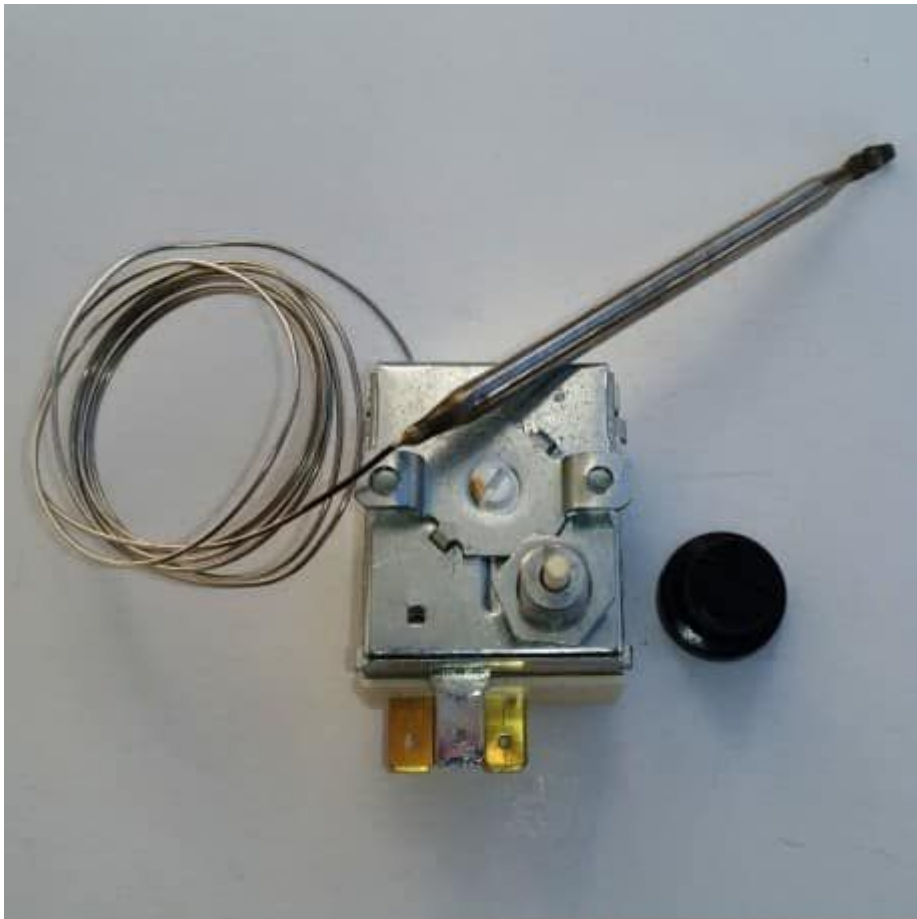












Private Picture Copyright: [WWW.MBSM.PRO](http://WWW.MBSM.PRO)



Private Picture Copyright: [WWW.MBSM.PRO](http://WWW.MBSM.PRO)





Private Picture Copyright: [WWW.MBSM.PRO](http://WWW.MBSM.PRO)

SCHNEIDER N:ATV32H075M2 variable  
speed drive ATV32 – 0,75 kw – 200 V –  
1 phase – with heat sink

Category: Pictures

written by [www.mbsm.pro](http://www.mbsm.pro) | 16 January 2022







# SINUMERIC

موزع لمنذانية Schneider

**Christ**  
WASH SYSTEMS  
Firmware V1.5 IE14



**⚠ DANGER**

HAZARD OF ELECTRIC SHOCK, EXPLOSION, OR ARC FLASH. Before servicing, remove all power and 15 minutes.



**⚡**  
AC/DC  
Nominal voltage  
ATV32HU4  
Nominal voltage  
ATV32HU4  
Nominal voltage



Schneider Electric Support & Warranty

ATV32HU15N4

SN 1542 814147

1.848 - 207 - 20-8000

MAC

0102 080 1007

Sinumeric\_ias@hotmail.com

مشروع الاستعماري - محل رقم 8



# SINUMERIC

موزع لمنذانية Schneider

S

0102 080 1007

Sinumeric\_ias@hotmail.com

مشروع الاستعماري - محل رقم 8

العائش من رمضان



# PINCE EMBOITURE VIRAX 12-32MM SERTISSAGE AXIAL PER-PEX 12-16MM

Category: Pictures

written by [www.mbsm.pro](http://www.mbsm.pro) | 16 January 2022



Private Picture Copyright : [WWW.MBSM.PRO](http://WWW.MBSM.PRO)





 **virax**



**AXIAL CRIMPING**  
**SERTISSAGE AXIAL**  
**PER / PEX**  
**Ø 12-16-20mm**



CHRONO 99765







- 252641 Ø 12-14-16-18-22 MM
  - 252644 Ø 12-14-16-18-22-28-32 MM
  - 252679 Ø 12-15-18-22-28 MM
  - 252637 Ø ¼-⅝-¾-⅞
  - 252651 Ø ¼-⅝-¾-⅞-1 ¼"
  - 252681 Ø ¼-⅝-¾-⅞-1 ¼"
- Cu**
- virax**



Private Picture Copyright: WWW.MBSM.PRO

## Machine a laver lg 11kg

Category: Pictures

written by www.mbsm.pro | 16 January 2022



Private Picture Copyright: WWW.MBSM.PRO



Private Picture Copyright: WWW.MBSM.PRO



Private Picture Copyright: WWW.MBSM.PRO



Private Picture Copyright: [WWW.MBSM.PRO](http://WWW.MBSM.PRO)



Private Picture Copyright: [WWW.MBSM.PRO](http://WWW.MBSM.PRO)

# BONNAMY AUTOMATIC TUBE BENDER

Category: Pictures

written by [www.mbsm.pro](http://www.mbsm.pro) | 16 January 2022













