

Compressor, R0HS, 1/3HP, R134A, Tecumseh, CAE4448Y, HBP, 208V/50HZ 230V/60HZ

Category: compressor

written by www.mbsm.pro | 16 March 2021

Compressors	Displacement CC	Motor	Cooling capacity (Watt) EN12900 condensing T° +45°C , subcooling 0K, Return Gas 20°C							EN12900 evaporating T° -10°C		Weight Kg
			evaporating T°							Power input(Watt)	COP (W/W)	
			-15	-10	-5	0	5	10	15			
AE4425Y	6,69	CSIR	266	342	424	519	633	770	938	199	1,72	9,1
AEZ4425Y	7,6	CSIR	239	320	414	522	641	771	912	205	1,56	9,7
											9%	
AE4430Y	8,02	CSIR	294	382	488	613	760	930	1127	237	1,61	9,4
AEZ4430Y	8,8	CSIR	316	404	512	639	784	946	1122	258	1,57	10,2
											3%	
AE4440Y	10,33	CSIR	399	508	637	790	968	1176	1417	302	1,68	9,6
CAE4440Y	12	CSIR	399	519	666	837	1033	1250	1489	342	1,52	10,8
											10%	
AE4450Y	13,24	CSIR	526	672	843	1042	1273	1540	1847	370	1,82	10,5
CAE4448Y	14,2	CSIR	519	654	822	1023	1253	1512	1797	400	1,64	11,9
											10%	
AE4456Y	14,51	CSIR	579	737	921	1133	1380	1664	1990	424	1,74	11
CAE4456Y	16	CSIR	590	744	933	1156	1411	1695	2006	486	1,53	12,5
											12%	
AE4460Y	15,09	CSR	597	766	958	1181	1437	1732	2070	409	1,87	11,3



Private Picture Copyright: WWW.MBSM.PRO

Basic Info.

Model NO.
CAE4448Y
Refrigerant Type
Ammonia
Refrigerant
R134A
Voltage
208V/50Hz 230V/60Hz
Horsepower
1/3HP
Capacity(W)
519W
Input Power(Kw)
400W
Oil Charge (Cm3)
450
Net Weight(Kg)
12kg
Cop(W/W)
1.64
Trademark

tecumseh

Transport Package

Wooden Box

Specification

208V/50HZ 230V/60HZ

Origin

France

HS Code

8414309010

**1/3HP HBP Original Made in France R134A Tecumseh Compressor CAE4448Y
Refrigerator Compressor For Refrigerator/Showcase/Cold Room**

Product Description

Model: CAE4448Y

Brand : Tecumseh

Type: hermetic

Refrigerant: R134A

Voltage: 208V/50HZ 230V/60HZ

Cooling capacity: 519W

Input Power Watts: 400 W

Power: 1/3 HP

Description rapide

Condition: Nouveau

Configuration: Stationnaire

Modèle de lubrifica... Lubrifié

Point d'origine: Guangdong, China

Numéro de Type: CAE4448Y

Dimension (L*W*H): 1 unité

Certification: ROHS

Service après-vente...Aucun service d'outre-mer fourni

Chevaux: 1/3HP

Type: Piston

Source d'énergie: Alimentation AC

Muet: Oui

Marque nom: tecumseh

Tension: 208 ~ 220V/1PH/50HZ

Poids: 20kg

Garantie: 1 année

Gaz: R134a

Compressors	Displacement CC	Motor	Cooling capacity (Watt) EN12900 condensing T° +45°C , subcooling 0K, Return Gas 20°C							EN12900 evaporating T° -10°C		Weight Kg
			evaporating T°							Power input(Watt)	COP (W/W)	
			-15	-10	-5	0	5	10	15			
AE4425Y	6,69	CSIR	266	342	424	519	633	770	938	199	1,72	9,1
AEZ4425Y	7,6	CSIR	239	320	414	522	641	771	912	205	1,56	9,7
											9%	
AE4430Y	8,02	CSIR	254	382	488	613	760	930	1127	237	1,61	9,4
AEZ4430Y	8,8	CSIR	316	404	512	639	784	946	1122	258	1,57	10,2
											3%	
AE4440Y	10,33	CSIR	399	508	637	790	968	1176	1417	302	1,68	9,6
CAE4440Y	12	CSIR	399	519	666	837	1033	1250	1489	342	1,52	10,8
											10%	
AE4450Y	13,24	CSIR	526	672	843	1042	1273	1540	1847	370	1,82	10,5
CAE4448Y	14,2	CSIR	519	654	822	1023	1253	1512	1797	400	1,64	11,9
											10%	
AE4456Y	14,51	CSIR	579	737	921	1133	1380	1664	1990	424	1,74	11
CAE4456Y	16	CSIR	590	744	933	1156	1411	1695	2006	486	1,53	12,5
											12%	
AE4460Y	15,09	CSR	597	766	958	1181	1437	1732	2070	409	1,87	11,3

Private Picture Copyright : WWW.MBSM.PRO

Basic Info.

Model NO.	CAE4448Y
Refrigerant	R134A
Horsepower	1/3HP
Input Power(Kw)	400W
Net Weight(Kg)	12kg
Trademark	tecumseh
Specification	208V/50HZ 230V/60HZ
HS Code	8414309010

Refrigerant Type	Ammonia
Voltage	208V/50Hz 230V/60Hz
Capacity(W)	519W
Oil Charge (Cm3)	450
Cop(W/W)	1.64
Transport Package	Wooden Box
Origin	France

Private Picture Copyright : WWW.MBSM.PRO

Mbsm_dot_pro_private_PDF_cae4448yTélécharger

Mbsm.pro, Donper, Hermetic, Compressor , R600a, Lj126Cy, lu126cy1, 1/3 Hp, R600a

Category: compressor

written by www.mbsm.pro | 16 March 2021



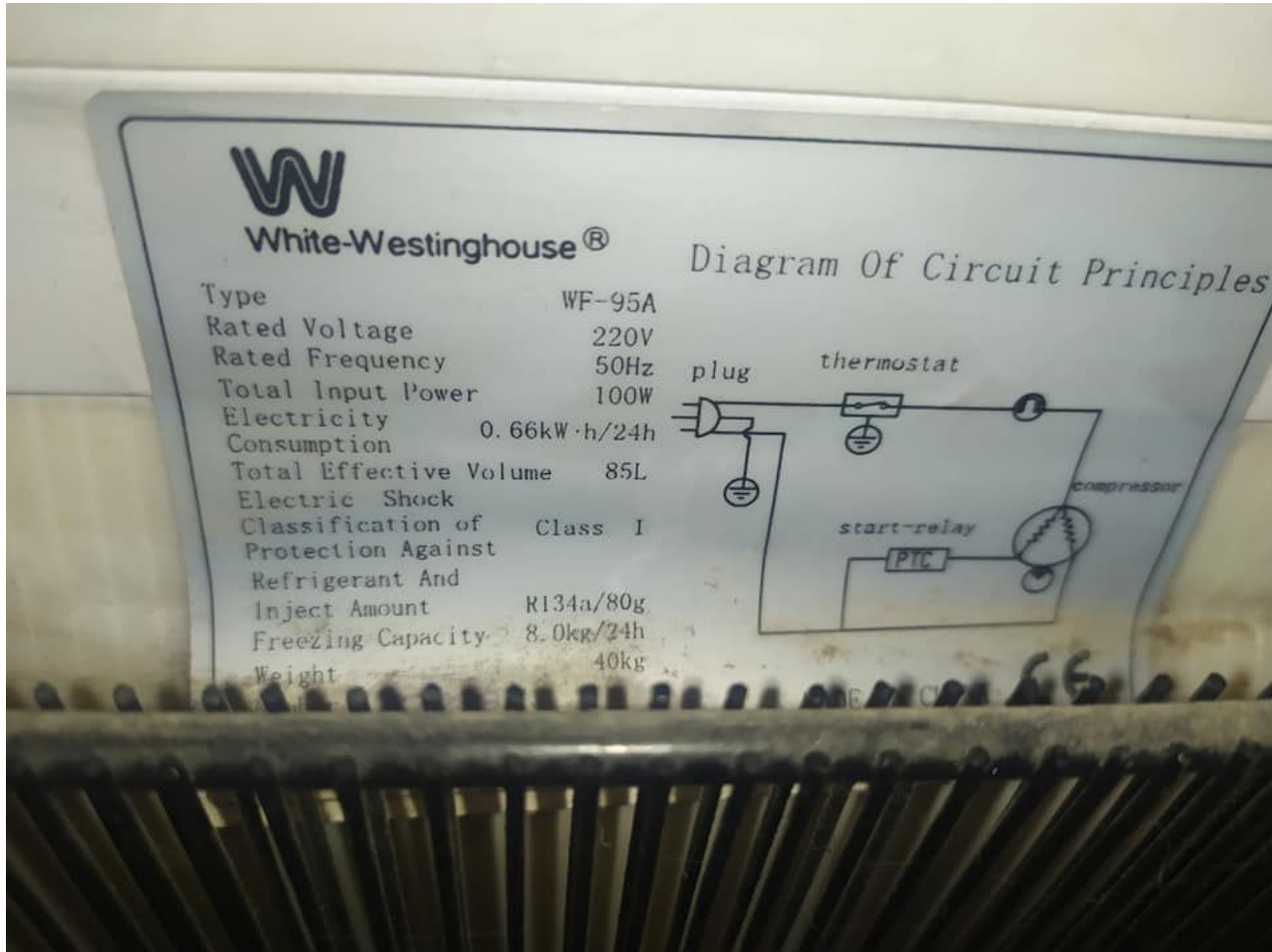
Private Picture Copyright : WWW.MBSM.PRO

Mbsm.pro, Donper, Hermetic, Compressor , R600a, Lj126Cy, lu126cy1, 1/3 Hp, R600a

Panasonic, refrigerator, compressor, SB48C95GAW5, 110w, White-Westinghouse refrigerator, 220v, 50 Hz, 85L, R134A/80G, 1/6 Hp

Category: compressor

written by www.mbsm.pro | 16 March 2021

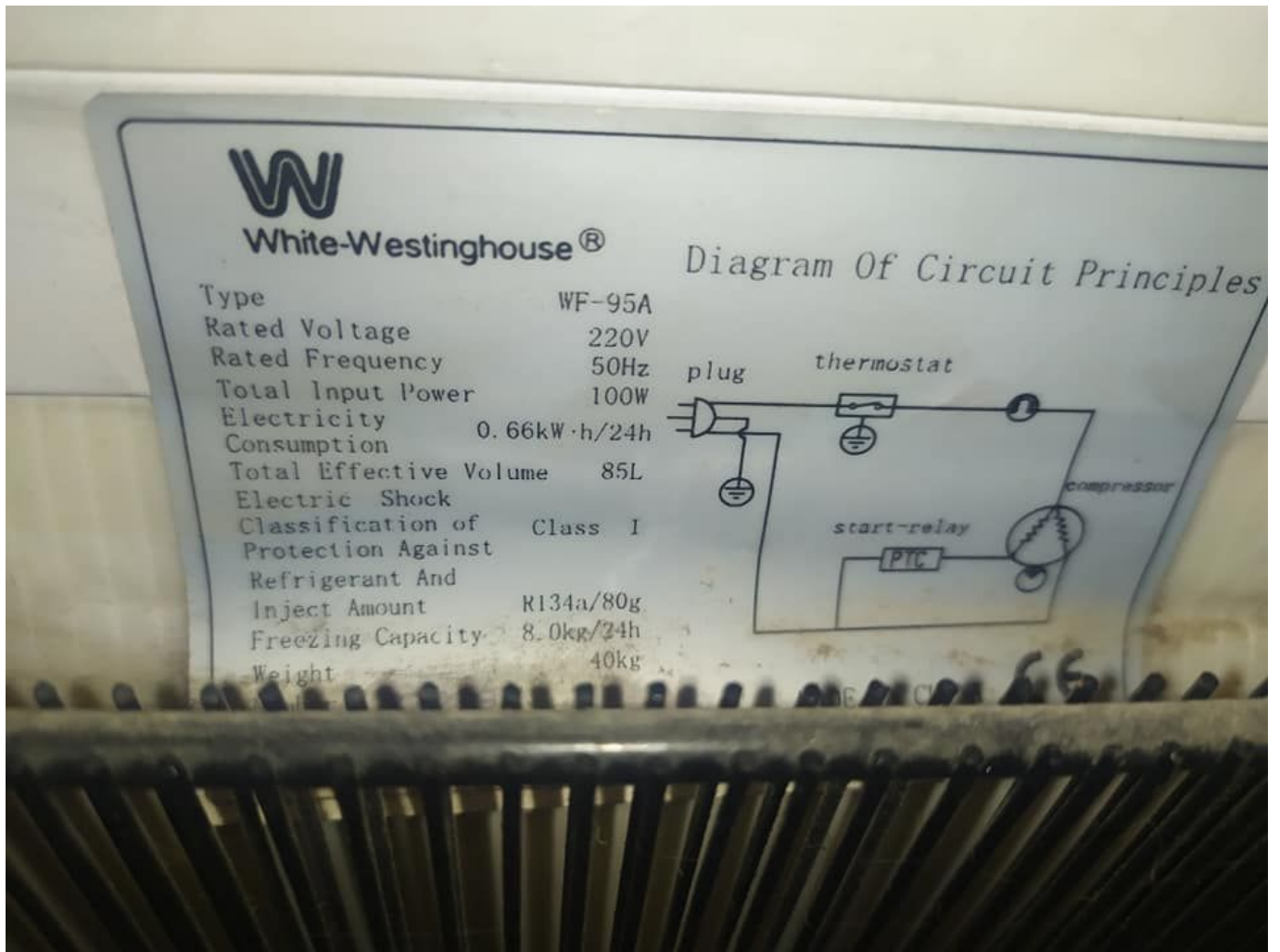


Private Picture Copyright : WWW.MBSM.PRO

Specification

Item	Performance characteristics
Refrigerant	R134a
Displacement (cm ³)	4.8
Voltage (V)	220/240
Frequency (Hz)	50
Motor Type	RSIR
Capacity@ASHRAE	110
COP@ASHRAE	1.03/0.99
Capacity@CECOMAF	–
COP@CECOMAF	–





Private Picture Copyright : WWW.MBSM.PRO

Mbsm_dot_pro_private_PDF_SB48C95GAW5Télécharger

HERMETIC, Freezer, COMPRESSOR, ZEL, GTH86AA, R134A, 1/4 Hp, Lbp, 230W, 8.6CC

Category: compressor

written by www.mbsm.pro | 16 March 2021



Private Picture Copyright : WWW.MBSM.PRO

COMPRESSOR ZEL GTH86AA

APPLICATION: LBP

FREON: R134A

DISPLACEMENT: 8.6CC

POWER SUPPLY: 220V

POWER: 1 / 4HP – 230W

APPLICATION: UNIVERSAL

Specifications

Description

Detailed Product Description

1.Low levels of noise and vibration

2.Standard,medium,high and very high levels of efficiency

R134a 220-240V/50HZ

Model	Displ.(cm ³)	Motor Type	Cooling capacity(w)	Input Power without RC(w)	COP with RC(w)	COP without RC(w/w)	with RC(w/w)	Run Capacltor	Start Capacltor	Height(mm)
Standard Efficiency Range										
0F789	4.4	RSIR	110	102		1.08				174

OF1033A5.7	RSIR	141	118	1.19				174
OF1350A7.5	RSIR	178	158	1.13				183
GTH86AA8.6	RSIR/RSCR230		161	1.43	1.50	5		174
GTH93AA9.3	RSIR/RSCR260		182	1.43	1.50	5		183
Medium Efficiency Range								
GTM40AT4.0	RSIR	102	91	1.12				163
GTM57AT5.7	RSIR	156	128	1.21				183
GTM60AT6.0	RSIR	165	136	1.27				163
GVY75AT7.5	RSIR/RSCR200		149	1.34	1.44	5		183
GTM75AA7.5	RSIR	200	166	1.20			50	183
GTM93AA9.3	RSIR	270	220	1.35				183
GTM10AA11.0	RSIR/RSCR300		222	1.35			50	183
GTM12AA12.0	RSIR/RSCR330		241	1.37			50	183



Private Picture Copyright : WWW.MBSM.PRO

Compressor, NL7.3FT, SECOP, 105G6726, DANFOSS, 6726, 105G, 105 G 6726, 105G 6726, 1/5 HP, 180W, LBP, Zanussi, Kiriazi Electric Company, TGV 335L,

NO FROST, TSV 320L, FC 83L , R134A,
125G, 220-240V 50Hz, CSIR

Category: compressor

written by www.mbsm.pro | 16 March 2021

KIRIAZI



CE



ELECTRIC
COMPANY

®

Product	No Frost Refrigerator	Class	T
Model	E 335N/3	Current / Amp.	1.1/~
Rated Voltage	220-240V/50HZ	Refrigerant	R 134a 125g
Rated input of lamp	1 x 25 w	Total Gross Volume	335 L
Ins : Basic	Type II IPX4	Total Storge Volume	320 L
Freezing Capacity	4 kg/24hr	Freezer Capacity	83L
ES 6000 / 2008		Tow Door Ref.	
ES 3793 / 2006			
Serial Number		Made in Egypt	



● ○ REDMI NOTE 8
○ ∞ AI QUAD CAMERA

Private Picture Copyright : WWW.MBSM.PRO

R134a is a low pressure refrigerant, very efficient for high temperature applications.

This makes it ideal in air conditioning applications that may leak refrigerant like car air conditioning.

Now it is being phased out because of its high global warming potential and replaced by R134

R404a is a high pressure refrigerant ideal for applications in low and medium temperature.

You want low pressure refrigerants in household applications like refrigerators that may be inside kitchens with (possible) high ambient temperature, so you make sure nothing will blow up. For the same reason you want R134a in your car air conditioning.

R404a instead has pressures slightly above atmospheric in low temperature applications where R134a would have negative pressures and its heat transmission coefficients would be much lower.

Type de gaz	App	HP	Watt	Modèle	TL
R134A	LBP	1/6	134	TLY5.1FK	
R134A	LBP	1/4	183	TLES7FT.4	

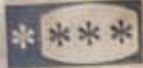
R134A	LBP	1/5	156	NL6FT.2	
R134A	LBP	1/5	185	NL7.3FT (RSIR)	
R134A	LBP	+ 1/4	219	NL9FT.2 (RSIR)	
R134A	LBP	1/4	185	NL7.3FT (CSIR)	
R134A	LBP	+ 1/4	219	NL9FT.2 (CSIR)	NL
R134A	LBP	1/3	284	NL10FT	
R134A	MBP	1/3	621	NL11MF	
R404A	LBP	1/3	433	NL7CLX	
R404A	LBP	1/3	471	NL8.4CLX	
R134A	LBP	1/4	187	NLY6F	
R134A	LBP	+ 4 /	213	NLY7F	
		(1)			
R134A	LBP	1/3	237	NLY9FK	
R600A	LBP	+ 1/4	227	NLE13KTK.2	
R600A	LBP	1/3	253	NLE15KTK.2	
R600A	LBP	+ 1/4	225	NLX13KK.3	
R600A	LBP	1/3	254	NLX15KK.3	

R134A	LBP / MBP / 1/3 HBP	264	SC12G	
R134A	LBP / MBP / 1/2 HBP	392	SC18G	
R134A	LBP / MBP / 3/4 HBP	456	SC21G	SC
R134A	MBP 3/4	1073	SC21MFX	
R134A	LBP 3/4	567	SC21FTX	
R404A	LBP 1	1033	ST21CL	
R404A	LBP 1	986	SC18CLX.2	
R404A	MBP 1/2	359/650	SC15MLX	
R404A	MBP 7/8	762/1584	SC18MLX	

KIRIAZI



CE



ELECTRIC
COMPANY

®

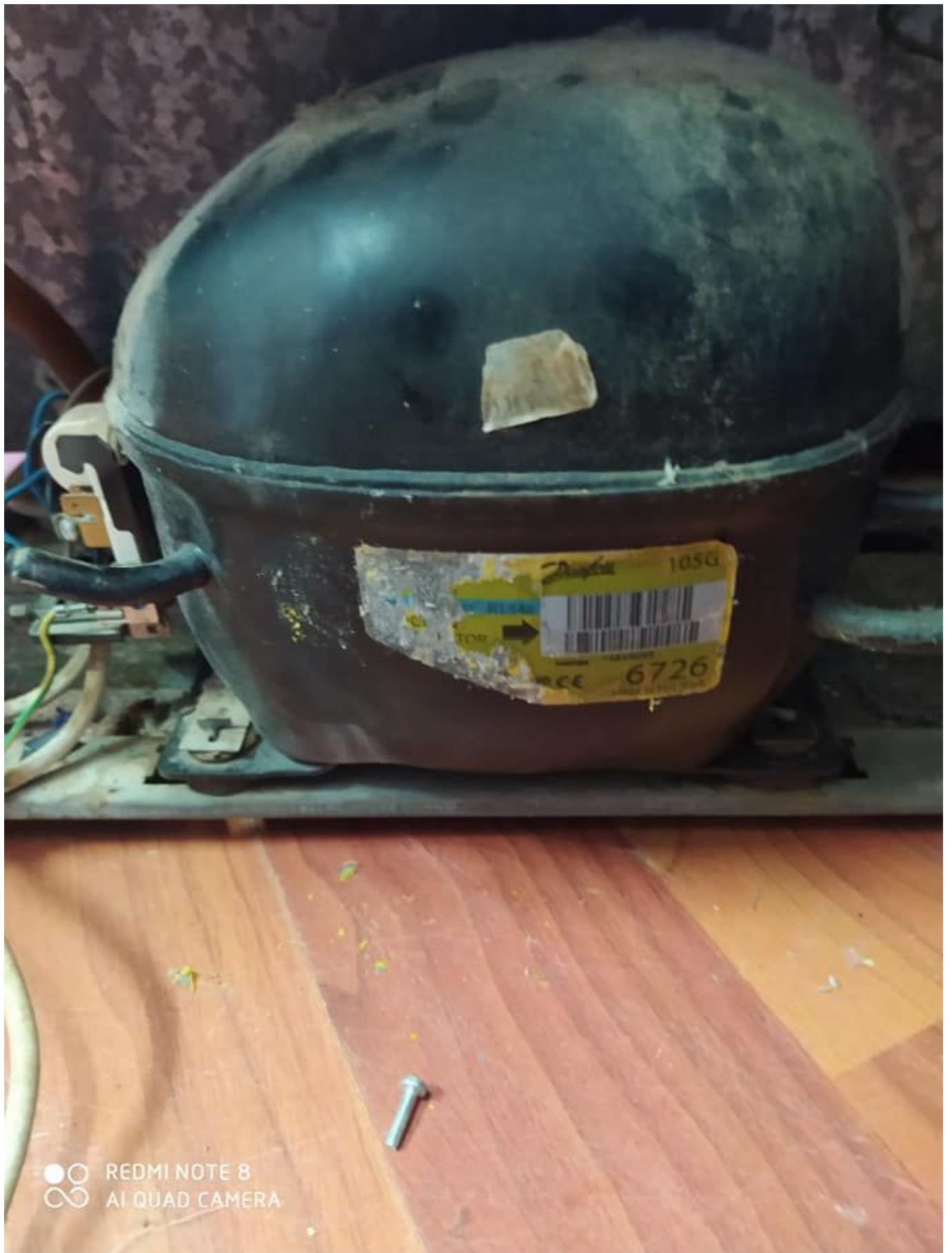
Product	No Frost Refrigerator	Class	T
Model	E 335N/3	Current / Amp.	1.1/~
Rated Voltage	220-240V/50HZ	Refrigerant	R 134a 125g
Rated input of lamp	1 x 25 w	Total Gross Volume	335 L
Ins : Basic	Type II IPX4	Total Storage Volume	320 L
Freezing Capacity	4 kg/24hr	Freezer Capacity	83L
ES 6000 / 2008		Tow Door Ref.	
ES 3793 / 2006			
Serial Number		Made in Egypt	



REDMI NOTE 8
AI QUAD CAMERA



REDMI NOTE 8
AI QUAD CAMERA



Private Picture Copyright : WWW.MBSM.PRO

Mbsm_dot_pro_private_PDF_NL7.3FTTélécharger
Mbsm_dot_pro_private_PDF_nl73ft_105g6731_r134a_220v_50hz_11-2011_desd406c102Télé
charger

Refrig	Applic	oil cooling	Evaporating temperature [°C]													Evaporating tem			
			-35	-30	-25	-20	-15	-10	-5	0	5	10	15	-25	-10				
			1/20	1/16	1/10	1/8+	1/6	1/5	1/4	3/8	1/2	5/8	3/4	1	1 1/4	1 1/2			
R134a	LBP		PL50F	101G0220		1/20	14	26	40	56	74	95						60	86
			TL53FT	102G4324		1/16	21	34	50	69	92	120						62	93
			TL54FT	102G4424		1/10	27	43	63	88	117	152						88	123
			TL55FT	102G4524		1/8+	48	71	98	131	170	216						114	165
			TL55.7FT.3	102G4615		1/6	66	90	120	156	200	253						120	170
			TL56.5FT.3	102G4703		1/5			136									139	
			NL6FT	105G6628		1/6	60	84	115	152	198	253						123	184
			NL6.1FT	105G6620		1/6	60	84	115	152	198	253						123	184
			NL7FT	105G6728	105G6738	1/5	71	100	136	181	235	299						145	220
			NL7.3FT	105G6726		1/5	71	100	136	181	235	299						145	220
			NL8.4FT	105G6865		1/4	87	120	162	213	275	350						169	252
			NL9FT	105G6828	105G6838	1/4	87	120	162	213	275	350						169	252
			NL10FT	105G6829	105G6839	1/3	113	158	213	281	361	455						215	316
			NLE7.3FT	105G6710		1/4	92	118	154	201	258	325						148	221
			SC12FT	104G8205	104G8215	1/3	103	163	233	314	408	517	645					265	380
			SC15FT	104G8505		1/2	126	197	280	376	489	620	772					311	451
			SC18FTX	104G8805		5/8	144	229	325	437	567	719	896					365	517
			SC21FTX 50Hz	104G8105		3/4	192	296	415	553	713	901	1119					428	613
			SC21FTX 60Hz	104G8106		3/4	240	345	470	620	800	1012	1262					475	707
			TL2.5G	102G4251		1/12	11	23	36	51	69	90	116	145	179	219	264	60	84
		TL3G	102G4350		1/12		25	41	59	81	106	136	170	211	258	312	66	96	
		TL4G	102G4452		1/8		41	58	80	107	140	180	226	280	342	413	83	118	
		TL5G	102G4550		1/6		56	79	107	139	178	224	278	341	414	497	100	149	
		FR6G	103G6660		1/5		48	83	124	171	226	290	365	452	552		109	172	
		FR7.5G	103G6680	103G6690	1/5		62	99	142	193	254	325	408	505	618		126	194	
		FR8.5G	103G6780	103G6790	1/4		85	123	171	228	298	381	478	592	722		151	231	
		FR10G	103G6880	103G6890	1/4		92	136	188	250	324	412	516	638	779		179	265	
		FR11G	103G6980		1/3		115	170	233	307	395	501	628	780			202	317	
		TL6.5MF	102G4781		1/4			174	219	279	349	425	520					202	
		NL6.1MF	105G6660		1/5			141	189	245	312	390	482	588	709			187	
		NL7.3MF	105G6772		1/4			179	236	304	385	480	591	719	867			227	
		NL8.4MF	105G6879		1/4+			213	277	353	445	553	679	825	994			261	
		NL10MF	105G6885		1/3			266	346	441	554	687	843	1023	1231			323	
		NLE10MF	105G6888		1/3	88	137	194	262	343	440	554	688	845			198	308	
		NL11MF	105G6151		3/8			292	380	485	609	756	927	1125	1354			360	
		SC10G	104G8000		5/16	23	60	113	183	268	369	486	618	764	925	1100	181	290	
		SC12G	104G8240	104G8250	3/8	65	113	175	252	348	464	603	768	960	1182	1437	227	355	
		SC15G	104G8520	104G8530	1/2			164	290	424	568	728	908	1110	1340	1600	233	440	
		SC18G	104G8820	104G8830	1/2+			283	394	526	684	870	1087	1337	1624	1950	273	507	

model	watt	HP	LBP/MBP	نوع گاز	توضیحات
SC12G	246	1/3	LBP/MBP	134	
SC18G	392	1/2	LBP/MBP	134	
SC21G	456	3/4	LBP/MBP	134	
SC21MFX	1073	3/4	MBP	134	هیجریک SC21G
SC21FTX	567	3/4	LBP	134	هیجریک SC21G
SC12CL	629		LBP	404	
SC15CL	782		LBP	404	
SC18CLX.2	986		LBP	404	
TLS5FT(PTC)	134	1/6	LBP	134	
TLES5.7FT(PTC)	163	1/5	LBP	134	
TLES6.5FT(PTC)	183	1/4	LBP	134	سلفن NL7
NL6FT.2(PTC)*	156	1/5	LBP	134	
NL7FT.2(PTC)*	185	1/4	LBP	134	
NL9FT.2(PTC)*	219	1/4+	LBP	134	
NL10FT	284	1/3	LBP	134	هیجریک SC12G (پارنه و سلفن)
NL11MF	621	1/3	MBP	134	هیجریک SC12G (پارنه و سلفن)
NL7CLX	433		LBP	404	
NL8.4CLX	471		LBP	404	
NL7.3MF	393		MBP	134	
NL8.4MF	455		MBP	134	
NLY6F	187		LBP	134	سلفن NL7 - High efficiency (7% در سلفن)
NLY7F	213		LBP	134	سلفن NL9 - High efficiency (7% در سلفن)
NLY9FK	237		LBP	134	High efficiency (7% در سلفن)
BD50F	72		LBP/MBP	134	
BD350GH	167		LBP/MBP	134	
GS21MLX	2200		MBP	404	
GS26CLX	1430		LBP	404	
GS34CLX	2072		LBP	404	
GS26MLX	2866		MBP	404	
GS34MLX	3726		MBP	404	

(LBP @ -33.3°C ASHRAE) زیر صفر
(MBP @ -6.7°C ASHRAE) بالای صفر

Private Picture Copyright : WWW.MBSM.PRO

THERMOSTAT, VT9, KIT RANCO, REFRIGERATEUR, 2 PORTES, Branchement

Category: Chaud&Froid

written by www.mbsm.pro | 16 March 2021



Private Picture Copyright : WWW.MBSM.PRO

THERMOSTAT VT9 KIT RANCO REFRIGERATEUR 2 PORTES

Ref. 101.03

Thermostat RANCO K59L1102 pour
réfrigérateurs double porte 2
températures & dégivrage automatique
position mini : $+3,5^{\circ}$
position maxi : -26°

Thermostat RANCO K59L1102
pour réfrigérateurs double porte
2 températures & dégivrage automatique
position mini : $+3,5^{\circ}$
position maxi : -26°
capillaire : 1,20 m

Dans un réfrigérateur ou un congélateur le thermostat vous permet de régler la température de l'appareil et de la maintenir constante. Certains frigos sont contrôlés par une platine électronique. Dans ce cas il y a une sonde de température reliée à cette platine.

Le thermostat fonctionne à l'aide d'une sonde parfaitement hermétique. Ce capillaire, logé dans la paroi, permet de prendre la température interne de l'appareil.

Ce bulbe contient un gaz sous pression qui réagit selon la température (le gaz se contracte lorsqu'il est refroidi) et est relié à une membrane déformable à son extrémité.

L'action du thermostat varie en fonction de la température interne de l'appareil.

Lorsque la température monte à l'intérieur du frigidaire, le contact électrique

interne du thermostat se ferme pour mettre en fonctionnement le compresseur jusqu'à obtention de la température désirée.

Dès que la température programmée dans le réfrigérateur est atteinte, le volume du gaz à l'intérieur du bulbe diminue provoquant l'ouverture du contact, ce qui arrête l'alimentation du compresseur.

Si le thermostat de votre frigidaire est défectueux, votre réfrigérateur ne refroidit pas assez ou refroidit trop alors que le sélecteur de température est sur la bonne position.

Le moteur / compresseur ne se met pas en route.

Liste d'appareils concernés (Non exhaustive)

-Information à relever sur la plaque signalétique apposée dans l'enceinte, derrière le bac à légumes ou au dos de l'appareil.

-Code usine (Commençant par 85), suivi de la référence commerciale du réfrigérateur.

853917601000 A301/G 853917601010 A301/G/1 853917601011 A301/G/1 853986401000 A305/M 853986401005 A305/M 853918201000 A331/G 853918201001 A331/G 853918201010 A331/G/1 853918201011 A331/G/1 853986801000 A335/M 853986801005 A335/M 853987901000 ARA37 853987901001 ARA37 853987901002 ARA37 853987801000 ARA38 853987801001 ARA38 853986401010 ARB31 853986401011 ARB31 853986401012 ARB31 853986801010 ARB34 850116601000 ARC1660 850116601001 ARC1660 850116601002 ARC1660 850116661000 ARC1660 850116661001 ARC1660 850116661002 ARC1660 850116761000 ARC1671 850116761010 ARC1675/1 850116761011 ARC1675/1 850116801000 ARC1680 850116861000 ARC1680 850116801010 ARC1685 850116801011 ARC1685 850116801012 ARC1685 850116861011 ARC1685/1 850116861012 ARC1685/1 850116861010 ARC1686/1 850116961000 ARC1690 850116961010 ARC1691 850116961020 ARC1695/1 850116961021 ARC1695/1 850116961030 ARC1699/1 850116961031 ARC1699/1 850117101000 ARC1710 850117110000 ARC1710 850117161000 ARC1711 850117101010 ARC1714 850117101011 ARC1714 850117101012 ARC1714 850117110010 ARC1714 850117110011 ARC1714 850117110012 ARC1714 850117161010 ARC1714/1 850117161011 ARC1714/1 850117161012 ARC1714/1 850117301000 ARC1730 850117315000 ARC1730 850117301010 ARC1736 850117301011 ARC1736 850117301012 ARC1736 850117315010 ARC1738 850117315011 ARC1738 850117315012 ARC1738 850117401000 ARC1740 850117501000 ARC1750 850117501010 ARC1756 850117501011 ARC1756 850117501012 ARC1756 850119115000 ARC1910 850119115001 ARC1910 850119115002 ARC1910 850119315000 ARC1930 850119315010 ARC1935 850119315011 ARC1935 850119315012 ARC1935 856457010000 ART570/G 856457101000 ART571/H 856457115000 ART571/H 856457101010 ART5710/H 856457101011 ART5710/H 856457101015 ART5710/H 856457161000 ART5710/H 856457161001 ART5710/H 856457161005 ART5710/H 856457201000 ART572/H 856457201001 ART572/H 856457201005 ART572/H 856457210000 ART572/H 856457210001 ART572/H 856457210002 ART572/H 856457210005 ART572/H 856457215000 ART572/H 856457215001 ART572/H 856457215005 ART572/H 856457261000 ART572/H 856457261010 ART5720/H 856457261011 ART5720/H 856457261015 ART5720/H 856458501000 ART585/H 856458515000 ART585/H 856458561000 ART585/H 856458561001 ART585/H 856458561005 ART585/H 856458501010 ART5850/H 856458501011 ART5850/H 856458501015 ART5850/H 856458601000 ART586/H 856458601001 ART586/H 856458601002 ART586/H 856458601005 ART586/H 856458615000 ART586/H 856458615001 ART586/H 856458615005 ART586/H 856458661000 ART586/H 856458661010 ART5860/H 856458661011 ART5860/H 856458661015 ART5860/H 856460010000 ART600/G 856460010001 ART600/G 856460015000 ART600/G 856460001000 ART600/H 856460015010 ART600/H 856460561000 ART605/H 856460729000 ART607/H 856460729010 ART6070/H 856460729011 ART6070/H

856460729015 ART6070/H 856461001000 ART610/G 856461001001 ART610/G 856461001002
 ART610/G 856461015000 ART610/G 856461015001 ART610/G 856461015002 ART610/G
 856461201000 ART612/G 856461201001 ART612/G 856461729000 ART617/H 856461729010
 ART6170/H 856461729011 ART6170/H 856461729015 ART6170/H 853937861000 FE180
 855065001000 KR3056/2 855065016000 KR3056/2 855065201000 KR3456/2 855094101000
 KRA3000 855094101020 KRA3000/1 855094101021 KRA3000/1 855094101025 KRA3000/1
 855094161010 KRA3000/2 855094001000 KRA3001 855094001010 KRA3002 855094001011
 KRA3002 855094001012 KRA3002 855094001015 KRA3002 855094161000 KRA3005
 855094161001 KRA3005 855094161005 KRA3005 855094101030 KRA3009SYMPHONY
 855094101040 KRA3009SYMPHONY 855094101041 KRA3009SYMPHONY 855094101045
 KRA3009SYMPHONY 855097801000 KRA3050 855097801001 KRA3050 855097801002 KRA3050
 855097861001 KRA3050/1 855097861002 KRA3050/1 855094501000 KRA3400 855094501010
 KRA3400/1 855094501011 KRA3400/1 855094501015 KRA3400/1 855094561010 KRA3400/2
 855094561000 KRA3405 855094561001 KRA3405 855094561005 KRA3405 855094516000
 KRA3410 855097901000 KRA3450 855097901001 KRA3450 855097901002 KRA3450
 855097916000 KRA3450 855097916001 KRA3450 855097916002 KRA3450 855094101010
 KRSTUTTART 855097801010 KRSTUTTART/ 855097801011 KRSTUTTART/ 855097801012
 KRSTUTTART/ 855094101050 KRSTUTTART/1 855094101051 KRSTUTTART/1
 855094101055 KRSTUTTART/1 855065001020 KRSTUTTART 855094701000 KRVA3409
 855094701005 KRVA3409 853938915001 PLF290A 853938915002 PLF290A 853937861010
 RE180/1 853937861011 RE180/1

Autres modèles

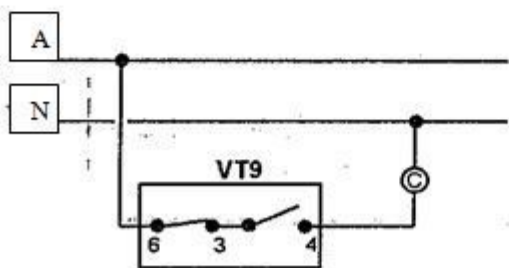
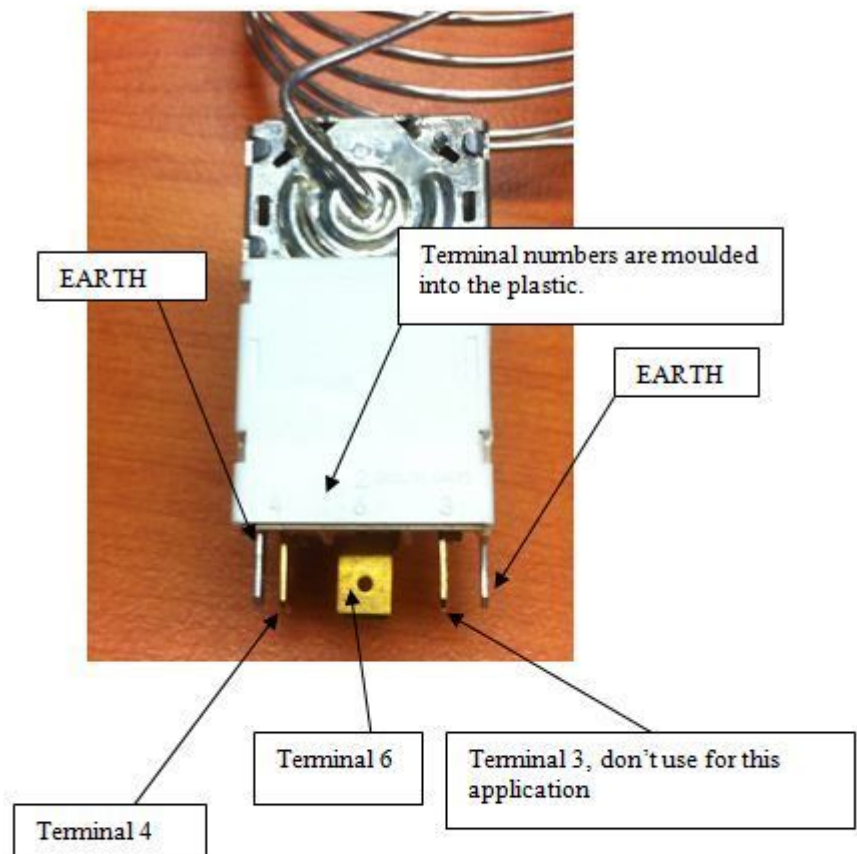
ZKP00000200 260/2D ZKP00003400 COMBI260FRIAC ZKP00008100 DPR235 ZKP00012600 F146
 ZKP00012700 F146RA ZKP00033000 IMP230*** ZKP00033100 IMP230***RA ZKP00035500
 KGA260 ZKP00035500 KGA260 ZKP00035600 KGA300 ZKP00035600 KGA300 ZKP00036600
 KS181 ZKP00037200 KS4310 ZKP00037600 KSA165COOLER ZKP00037700 KSA245 ZKP00066200
 ZKL236/2DRAA ZKP00066500 ZKL260/2D ZKP00066700 ZKL291/2DRA ZKP00066700
 ZKL291/2DRA ZKP00066800 ZKL300/2D ZKP00066900 ZKL301/2DRA ZKP00067400
 ZKS146TT***RA ZKP00068000 ZKS180COOLER ZKP00068100 ZKS181COOLER ZKP00068200
 ZKS181COOLERRA ZKP00068300 ZKS182COOLERRA ZKP00068900 ZKS240/2D ZKP00068900
 ZKS240/2D ZKP00069300 ZKS290/2D



Private Picture Copyright : WWW.MBSM.PRO

- Fil marron (phase) sur borne 3.
- Fil noir (alim. compr.) sur borne 4.

- Fil bleu, ou gris, sur borne 6 (lampe du frigo).
- Fil bicolore (jaune & vert) sur borne de mise à la terre.



Private Picture Copyright : WWW.MBSM.PRO

Reciprocating Compressors, Q Series, Reciprocating Fixed Speed, R134a, 100g, LBP, QA66C14GAX5, RSIR, 145W, 1/5HP, 170L

Category: compressor

written by www.mbsm.pro | 16 March 2021



Private Picture Copyright : WWW.MBSM.PRO



Private Picture Copyright: WWW.MBSM.PRO

MODEL QA66C14GAX5
220V ~ 50Hz 1PH R134a
THERMALLY PROTECTED
MATSUSHITA ELECTRIC IND. CO., LTD.
MADE IN MALAYSIA



Electrostar
الالكتروستار

Model **ES170 T**

طراز

W **136** وات

A **1.12** أمبير

HZ **50**

ذبذبة

Ser No.



018018

ممتثل

V

220

فولت

R134a

100 gm

وزن وسيط
التبريد

Total Capacity 170 Lit.

Class T

صنع في مصر

Reciprocating Compressors, LBP – Low Back Pressure, R-134a, TECUMSEH, 1/3hp, TP1410YS,

Category: compressor

written by www.mbsm.pro | 16 March 2021



Private Picture Copyright : WWW.MBSM.PRO

TPH1410YHS

Wholesale and retail Tecumseh/Taikang compressor, Tecumseh/Taikang piston compressor model: TPH1410YHS, type: low back pressure, refrigerant: R-134a, power supply voltage: 230V ~ 50Hz, provide Tecumseh/taikang TPH1410YHS model,

specifications, parameters, Picture, price and other data. Taikang is the world's leading manufacturer of hermetic compressors and condensers in household and commercial refrigeration and air conditioning applications
Product model: TPH1410YHS
Refrigerant: R-134a
Power frequency: 50Hz
Power supply voltage: 230V ~ 50Hz
Product Type: Low back pressure

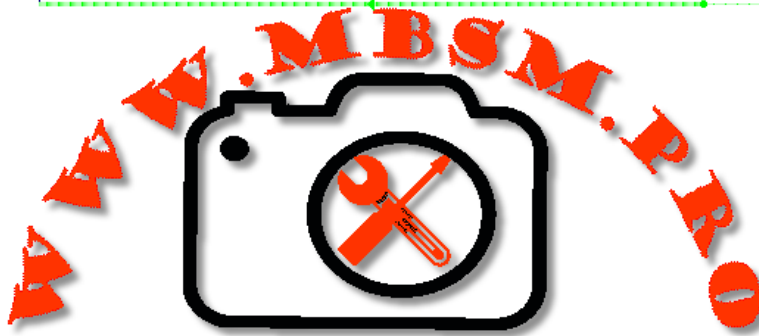
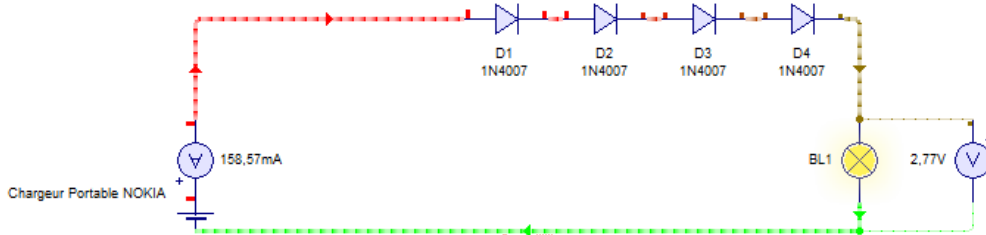


Private Picture Copyright: WWW.MBSM.PRO

Mbsm_dot_pro_private_PDF_TP1410YS-Télécharger
Mbsm_dot_pro_private_PDF_TPH1410YGSTélécharger

Reduire 5.0v d'un chargeur gsm portable Jusqu'à 3.0V Pour Allimenter un Chauffe-eau 10 Litre Électronique

Category: Développement,electricity,electronique
written by www.mbsm.pro | 16 March 2021

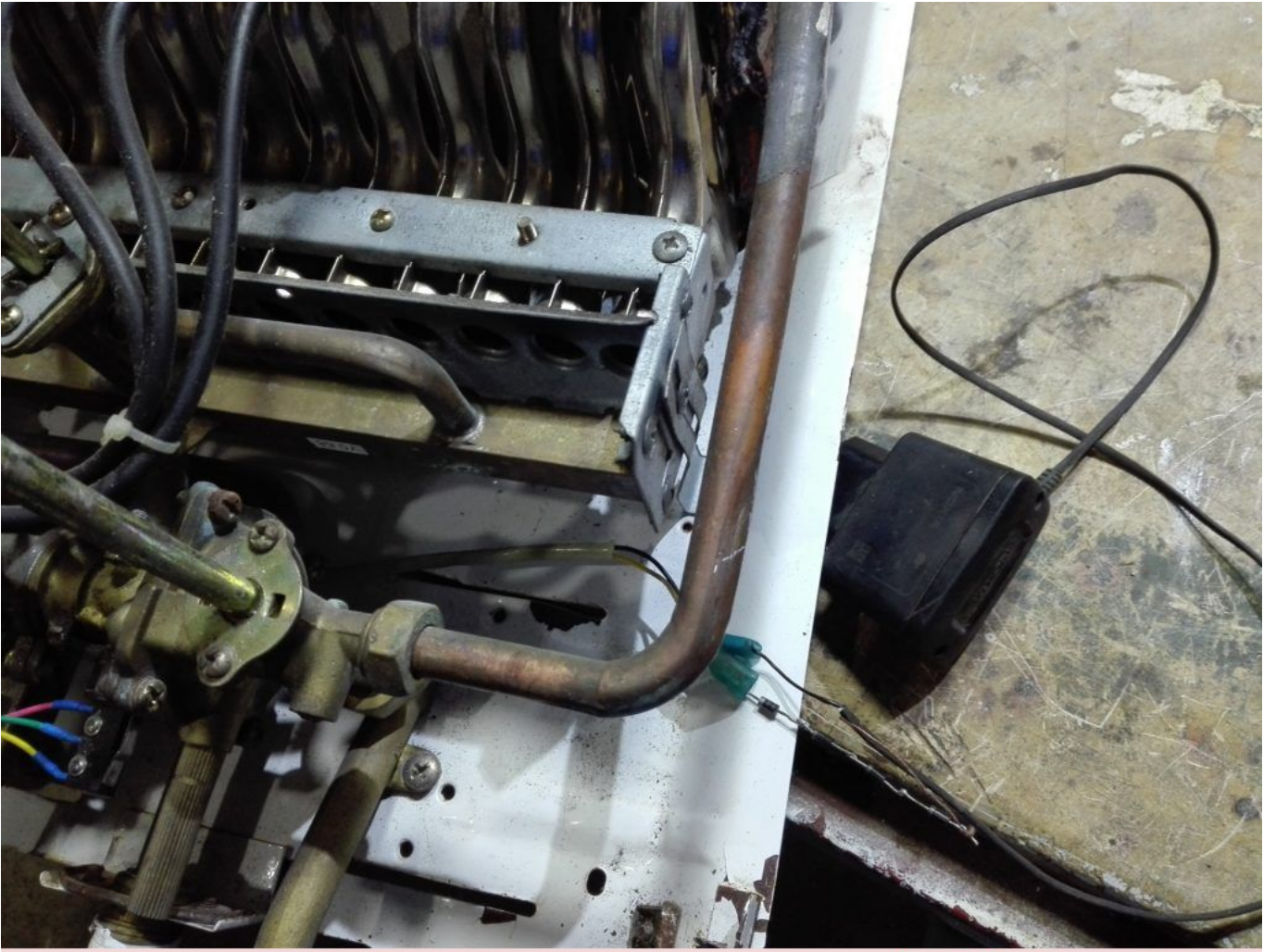


Private Picture Copyright : WWW.MBSM.PRO

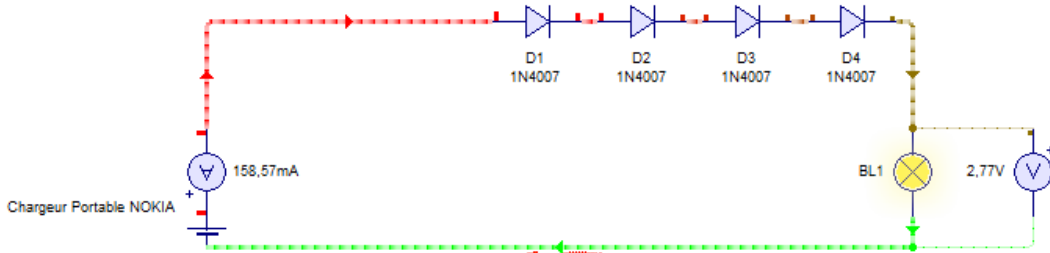
تقليل 5.0 فولت من شاحن جي إس إم محمول إلى 3.0 فولت لتشغيل سخان مياه إلكتروني بسعة 10 لترات

Reduire 5.0v d'un chargeur gsm portable Jusqu'à 3.0V Pour Allimenter un Chauffe-eau 10 Litre Électronique

Reduce 5.0v of a portable gsm charger to 3.0V to power a 10 liter electronic water heater



Private Picture Copyright : WWW.MBSM.PRO



Private Picture Copyright : WWW.MBSM.PRO



MIND Global Oy
Model: FC0200 Output: 5V 1A
Input: AC 100-240V, 50-60Hz, 0.15A
Made in China
01217
FRLC
CE
FCC
VI
Address: Karasaurusu 2, 01610 Lemminkäinen
170049091330004512 Phone: 1022011



Private Picture Copyright: WWW.MBSM.PRO



Private Picture Copyright: WWW.MBSM.PRO





Private Picture Copyright: WWW.MBSM.PRO

Compresseur, MPT18LA, R-404A / R-507, Cubigel Compressors, 1/2 HP, LBP, CSR

Category: compressor

written by www.mbsm.pro | 16 March 2021



cubigel
compressors

MPT18LA
220-240V-50Hz PH1

R404A
R507

THERMALLY PROTECTED

CE

MADE IN SPAIN

9041257434100130

09121

Le compresseur à piston hermétique à basse température Cubigel MPT18LA est utilisé dans les équipements de réfrigération avec des températures de fonctionnement d'évaporation inférieures à -20 °C:

1. Réfrigérateurs
2. Congélateurs
3. Réfrigérées vitrines
4. Chambres frigorifiques pour produits surgelés.

Caractéristiques du compresseur Cubigel MPT18LA:

- Travailler sur le fréon R404a / R507a
- Application de LBP (Low Dack Pressure)
- Volume du cylindre 18 cm³
- Capacité d'huile 450 cm³
- Type d'huile ISO VG 32 ESTER
- Courant de démarrage 19 A
- Poids 12,5 kg

Caractéristiques du moteur du compresseur Cubigel MPT18LA:

- Type de moteur CSR
- Puissance 1/2 CV
- Tension 200-220V 50Hz
- Tension admissible 170-242 V



cubigel
compressors

MPT18LA
220-240V-50Hz PH1

R404A
R507

THERMALLY PROTECTED

CE

MADE IN SPAIN

9041257434100130

09121

Mbsm_dot_pro_private_PDF_compresseur-acc-cubigell-electrolux-MPT16LATélécharger

Mbsm_dot_pro_private_PDF_huayi_compressor_mpt18la__r404a_220_50_1Télécharger