

White whale look machine a laver

Category: Pictures

written by www.mbsm.pro | 29 December 2021



Private Picture Copyright : WWW.MBSM.PRO





Mbsm.pro, Compressor, JIAXIPERA,
ND1080Y, 1/8HP, ND1090Y, 1/8+HP,
ND1110Y, 1/7HP, ND1111Y, 1/6-HP,
ND1112Y, 1/6+HP, NX1080Y, 1/8HP,
NX1090Y, 1/8+HP, NX1110Y, 1/7HP,
NX1111Y, 1/6HP, NX1112Y, 1/6+HP,
NX1113Y, 1/5HP, NX1114Y, 1/5+HP,
NX1116Y, 1/4HP, NX1117Y, 1/4HP,
NX1119Y, 1/4+HP, NX1120Y, 1/4+HP,
TB1080Y, 1/8HP, TB1090Y, 1/8+HP,
TB1110Y, 1/7HP, TB1111Y, 1/6HP,

TB1112Y, 1/6+HP, TB1113Y, 1/5HP,
TB1114Y, 1/5+HP, TX1080Y, 1/8HP,
TX1090Y, 1/8+HP, TX1110Y, 1/7HP,
TX1111Y, 1/6HP, TX1112Y, 1/6+HP,
TX1113Y, 1/5HP, TX1114Y, 1/5+HP,
VNX1111Y, 1/6HP, VNX1113Y, 1/5HP,
VNX1116Y, 1/4HP, ZBX1117CY, 1/4HP,
ZBX1119CY, 1/4+HP, ZBX1121CY, 1/4+HP

Category: compressor

written by www.mbsm.pro | 29 December 2021



Mbsm.pro, Compressor, JIAXIPERA, ND1080Y, 1/8HP, ND1090Y, 1/8+HP, ND1110Y, 1/7HP, ND1111Y, 1/6-HP, ND1112Y, 1/6+HP, NX1080Y, 1/8HP, NX1090Y, 1/8+HP, NX1110Y, 1/7HP, NX1111Y, 1/6HP, NX1112Y, 1/6+HP, NX1113Y, 1/5HP, NX1114Y, 1/5+HP, NX1116Y, 1/4HP, NX1117Y, 1/4HP, NX1119Y, 1/4+HP, NX1120Y, 1/4+HP, TB1080Y, 1/8HP, TB1090Y, 1/8+HP, TB1110Y, 1/7HP, TB1111Y, 1/6HP, TB1112Y, 1/6+HP, TB1113Y, 1/5HP, TB1114Y, 1/5+HP, TX1080Y, 1/8HP, TX1090Y, 1/8+HP, TX1110Y, 1/7HP, TX1111Y, 1/6HP, TX1112Y, 1/6+HP, TX1113Y, 1/5HP, TX1114Y, 1/5+HP, VNX1111Y, 1/6HP, VNX1113Y, 1/5HP, VNX1116Y, 1/4HP, ZBX1117CY, 1/4HP, ZBX1119CY, 1/4+HP, ZBX1121CY, 1/4+HP



ZBX 1119 CY

1 / 4 + HP



ZBX 1121 CY

1 / 4 + HP



ZBX 1122 CY

1 / 4 + HP



TB 1080 Y

1 / 8 HP

TB 1090 Y

1 / 8 + HP

TB 1110 Y

1 / 7 HP



TB 1111 Y

1 / 6 HP



TB 1112 Y

1 / 6 + HP



TB 1113 Y

1 / 5 HP



TB 1114 Y

1 / 5 + HP



TX 1080 Y

1 / 8 HP



TX 1090 Y

1 / 8 + HP



NX 1110 Y

1 / 7 HP

NX 1111 Y

1 / 6 HP

NX 1112 Y

1 / 6 + HP



NX 1113 Y

1 / 5 HP

NX 1114 Y

1 / 5 + HP

NX 1116 Y

1 / 4 HP



NX 1117 Y

1 / 4 HP

NX 1119 Y

1 / 4 + HP

NX 1120 Y

1 / 4 + HP

MH 1110 Y

1 / 6 - HP

ND 1070 Y

1 / 9 HP

ND 1080 Y

1 / 8 HP



ND 1090 Y

1 / 8 + HP



ND 1110 Y

1 / 7 HP



ND 1111 Y

1 / 6 - HP



ND 1112 Y

1 / 6 + HP



NX 1080 Y

1 / 8 HP



NX 1090 Y

1 / 8 + HP



JK 1080 Y

1 / 8 + HP



JK 1090 FY

1 / 6 - HP



JK 1110 Y

1 / 7 HP



JK 1111 HY

1 / 6 - HP



MH 1050 Y

1 / 12 HP



MH 1090 Y

1 / 8 + HP

Private Picture Copyright : WWW.MBSM.PRO

Mbsm.pro, Compressor, cubigel, huayi, ACC, Electrolux, HPY14AA, LBP, R600a, 1/5HP, 220-240V/1/50Hz, 166 W

Category: compressor

written by www.mbsm.pro | 29 December 2021



Private Picture Copyright: WWW.MBSM.PRO

Compressors/Compressors ACC – Electrolux HP14AH, LBP – R600a, Power consumption 1/5HP, 220-240V/1/50Hz, Motor type RSIR, Injection: Capillary operation, Displacement 14.32 cm³, Oil type ISO VG10 Mineral oil, Oil quantity 300 cm³, Power 147 W at -25 / +55 °C, Power consumption 166 W, Power 0.0 W, Cooling capacity

-10 °C	-15 °C	-20 °C	-25 °C	-30 °C	-35 °C
344	276	216	166	124	92

Shipping Class	Standard
Scope Of Application	LBP
Lieferzeit	2-3 Wochen
Type Of Construction	Piston
Condensation Temperature	55°C

Maker	ACC
Manufacturer No.	HPY14AA
Displacement In Cm3	14.32
Measuring Requirements	Ashrae
Refrigerants	R600a
Series	HPY
Condensing Units Compressors	Compressors
Suspense	220-240V
Weight In Kg	13

Compressor ACC Cubigel Huayi Electrolux ZEM HPY14AA, LBP -R600a, 220-240V/1/50Hz, 1/5 HP, discharge 14.32 cm³, motor type RSIR, oil type ISO VG10 mineral, oil charge 300 cm³, 166 W at -25 / +55 °, input power, current 147 W, 0.96 A, expansion device: capillar, cooling: static, weight 11 kg , the statutory warranty period shall apply (24 months), Delivery time Info: with "immediately available" and "scarce stock", usually delivery within 2 days. For "currently not available" delivery time usually 2 weeks or delivery time in urgent cases contact us.

Refrigerant:	R600a
Power range(W):	101 – 200 W
Performance range (C):	-35 C to -10 C
Connecting size:	6,5 mm
Suction:	8,1 mm
Working area:	LBP
Design type:	Hermetic
Model series:	HPY
Use with:	Capillary
Power range(HP):	0-2
Power supply:	230 V
Oil type:	ISO VG 10 Mineral
Engine type:	RSIR
Article condition:	New
Info:	Oil filled
Shipping weight:	13,00 Kg
Dimensions (length × width × height):	20,40 × 16,20 × 19,60 cm
customs tariff number:	84143081
Cooling capacity condition:	T0 -25 C, Tk +55 C
Manufacturer:	ACC Cubigel Huayi Electrolux ZEM
Model:	HPY14AA
Modelname:	HP14AH
Stroke volume (cm ³):	14,32
Cooling capacity (W):	147
Power (HP):	0,25
Max. Starting current (A):	11,5
Max. Operating current (A):	0,96
Engine type:	RSIR

Note:	Static cooling
Oil quantity (l):	0,3
Compressor type:	Piston
Power range:	-35 C to -10 C
Alternative:	NBM1118Y , EMX70CLC , NBM1116Y
Pressure line (mm):	6,5
Suction line (mm):	8,1





Private Picture Copyright : WWW.MBSM.PRO

[Mbsm_dot_pro_private_PDF_HPYP14AA-1Télécharger](#)

[Mbsm_dot_pro_private_PDF_HPYP14AATélécharger](#)

HGX12P/75-4, R410A, compressor, semi-hermétique, BOCK, 25,0 hp

Category: Chaud&Froid,compressor

written by www.mbsm.pro | 29 December 2021



HGX12P/75-4 R410A

Data Sheet

Power supply	220/240 V-380/420 V-50 Hz-3 ph (265/290 V-440/480 V-60 Hz-3 ph) Δ Y
Horsepower	25,0 hp
Displacement	6,70 m ³
Cooling capacity at Refrigeration conditions, R407C	3,39 kW
Cooling capacity at Refrigeration conditions, R404A	3,97 kW
Refrigerant	R134a, R404A, R407C, R407F, R448A, R449A, R507, R513A
Suction pipe	5/8"
Discharge pipe	1/2"
Weight	49 kg
LRA (Δ/y)	43/25 A

MCC (Δ/y)	8,0/4,6 A
Type of oil	FUCHS Reniso Triton SE 55
Other remarks	Available in ATEX version, Electronic frequency control (30-70 Hz), Equipped with oil pump without connections to the differential oil pressure switch
Accessories	Control Capacity 50/100%, Crankcase heater 50-120 W, Thermal protection thermostat (PTC sensor)
Application	MHBP
Technology	Fixed speed
Lubrication mode	Oil pump
Low pressure design	19 bar
High pressure design	28 bar
Type of motor cooling	Suction gas
Protection type	IP 66
Motor protection type	INT69 G
Speed	1450 rpm



Mbsm_dot_pro_private_PDF_HGX12PTélécharger



BOCK BOCK GmbH, Benzstr.7 CE
72636 Frickenhausen, Germany

Typ: HGX12P/75-4 S

Nr.: BD44874A046

I_{max}: 8,0/4,6A

I_{block} Δ: 43A Y: 25A

P_{max}: ND(LP) / HD(HP) = 19/28 bar

220-240VΔ/380-420VY - 3 - 50HZ

n: 1450 min⁻¹ V_{th}: 6,70 m³/h

265-290VΔ/440-480VY - 3 - 60HZ

n: 1740 min⁻¹ V_{th}: 8,1 m³/h

IP66

Öl: BOCKlubE55

Import

Ab 02. August 2021 sind
Diese Änderung ist auch an
Die im Werk serienmäßig eingefüllte
Wartungseinheiten eingesetzt werden
aufgrund der Verwendung minderwertiger
erheblich abweichen und zudem Probleme
insbesondere eine Validierung im gesamten
Ölen nicht gewährt werden. Aus diesem Grund
Für durch alternative Öle entstandene Schäden

Kältemittel
HFKW / HFO
CO₂ / HFO
HFCKW
Kohlenwasserstoffe

Typschild Beispiel:
Name plate example:

Neon compressor, QD128H(360W), 1/3Hp,
QD158H(450W), 3/8+, QD142H(395W),
3/8+, QD168H (322W), 1/2Hp, R134a

Category: compressor

written by www.mbsm.pro | 29 December 2021



Neon compressor, QD128H(360W), 1/3Hp, QD158H(450W), 3/8+, QD142H(395W), 3/8+,
QD168H (322W), 1/2Hp, R134a

Compresseur, Mitsubishi, Electric
MITSUBISHI, RH174VHAC, 9000 BTU/heure

(2,6 kW), 220-240V 50Hz, R22

Category: compressor

written by www.mbsm.pro | 29 December 2021



Private Picture Copyright: WWW.MBSM.PRO

Modèle – Mitsubishi Electric RH 174 VHAC (9000Btu)

Productivité – 9000 BTU/heure (2,6 kW)

Alimentation – 220-240V 50Hz

Réfrigérant (fréon) – R22

Entre vannes – 15 cm

Hauteur compresseur – 22 cm

Diamètre compresseur – 13 cm

#mbsmpro

[Mbsm_dot_pro_private_PDF_pdf_RH174VHACTélécharger](#)

[Mbsm_dot_pro_private_picture_RH174VHACTélécharger](#)



Bitzer, Compressor, S6F-30.2Y-40P,
Compressor Selection, Semi-hermetic
Reciprocating, 1450 min-1 , 101,1
(LP) , 30hp

Category: compressor

written by www.mbsm.pro | 29 December 2021



Type S6F-30.2Y-40P

S.No. 1600308267

BITZER KÜHLMASCHINENBAU GMBH
Made in Germany



Nominal Voltage V 3Ph~	Frequ. Hz	Operat. C. A (max)	Locked Rotor C.		Displacem. m³/h	Speed RPM
			A (Y)	A (YY)		
380-420	50	51	135	220	101,4	1450
440-480	60	51	135	220	122	1750

IP 54 LP/HP max. 19 / 28 bar



BITZER is raising the bar in terms of technology and capacity for expanded low temperature applications with the 2nd generation of 2-stage compressors. This series is the result of extensive research on the basis of years of experience in the construction of highly efficient and solid reciprocating compressors. The gas flow control and working valves are specially adapted for low temperature applications.

- Displacement at 1450 min⁻¹ : 101,1 (LP) 50,5 (HP)
- Number of cylinders : 6
- Oilcharge : 4,75 dm³

Displacement (1450 RPM 50Hz):101.10 / 50.50 m³/h Displacement (1750 RPM 60Hz):122.02 / 60.95 m³/h

The Bitzer Compressor is high quality!

Displacement (1450 RPM 50Hz):101.10 / 50.50 m³/h

Displacement (1750 RPM 60Hz):122.02 / 60.95 m³/h

No. of cylinder x bore LP/HP x stroke:6+6 x 82/ 82 mm x 55 mm

Max. pressure (LP/MP/HP):19 / 19 / 28 bar

Connection suction line:42 mm – 1 5/8 inch

Connection discharge line:35 mm – 1 3/8 inch

Oil type R404A/R507A:BSE32 (Standard)

Oil type R448A/R449A:BSE32 (Standard)

Oil type R22:B5.2 (Option) We can also provide the following models

4JTE-15K

GYD80485VAYB4

GED60235VLB332

GMD60137VBYR632

GED60485VBYR3-1

CSH7573-70Y-40P

GYD80182VLYB632

GYD60385VLYR2-2

GED80154VLR332

GYU80295VLR4-2

GSU60120VLB6-2

GED60137VAYB3-1

GUU60154VLR532

GUD80295VLR232

GSD80295VLR6-1

GTU60137VLYB3-1

GUD60137VBYR5-1

GYD80235VBYB332

GYD60421VAYR332

GMD60295VBR3-1

GED80154VBYB6

4NEH-14-40S

GMU60154VLY

GYD60154VAB4-2

GYD80182VAYR4-2

GYD80421VBR5-1

GYD60385VLYR4-1

4TE-9.F3Y-40S

GMD60182VBYB3-2

GMD80120VLR232
 GUD60120VBYR5-2
 GSD60154VAYR232
 GMD60154VBYR632
 44EES-12-40S
 GMD60154VBB432
 GUD80421VWR4-2
 GYD80385VAYR2-2
 GTD60385VLB632
 GED60235VLB2
 GED60154VAYR4
 GSD80421VWR5-2
 GUD60421VBR5
 GYD80182VBYB5-1
 GED60295VBB5
 GED80421VAR4-1
 GED60385VLYB3
 GYU80421VLR2
 GSD80485VBB5-1
 GED60120VLB2
 GUD60421VBR332
 GTD60154VAB4-2
 GED60421VAYB6-1
 GMD60485VBB5-1
 GSD60485VAYR4
 GED80295VLYR6-1
 GSD60235VAYB232
 GTD60385VBYR3-1
 GUD60154VBB3-2
 GUD80295VWB6-2
 GED60421VAR5
 GMD80421VBR4
 GED80182VLR532
 GSD60154VBYB6-1
 GTD80421VBYR332
 GSD60182VAYB4-1
 GUD80485VWYR5-2
 GSU80295VLYR6-1
 GSD80182VLYR2-2
 GSU80385VLB432
 GED80295VAY
 GED80295VAB3-2
 GYD60120VAR4

With liquid subcooling 50Hz (R404A/R507A)

Compressor type	Cond. temp. [°C]	Q _o / P _e	Evaporating temperature °C									
			-25	-30	-35	-40	-45	-50	-55	-60	-65	-70
S6F-30.2Y	30	Q _o	43400	37400	31750	26500	21700	17420	13690	10540	7920	5800

Pe	2,53	0,65	8,78	16,94	15,15	13,42	11,77	10,20	8,74	7,40	
35	Qo	42500	36600	31050	25900	21200	17030	13420	10340	7780	5680
Pe	3,85	1,86	9,89	7,94	6,04	4,21	12,45	10,78	9,23	7,80	
40	Qo	41500	35700	30300	25300	20700	16680	13170	10150	7590	
Pe	25,20	23,10	21,01	18,96	16,95	15,00	13,14	11,37	9,72		
45	Qo	40450	34800	29550	24700	20300	1660	12930	9920		
Pe	26,59	24,37	22,16	19,98	17,86	15,80	13,83	11,96			
50	Qo	39500	34000	28850	24100	19870	16060	12650			
Pe	28,07	25,69	23,33	21,01	18,75	6,57	14,49				
55	Qo	38800	33250	28200	23600	19490	15740				
Pe	29,64	27,06	24,51	22,03	19,63	17,32					

Qo – Cooling capacity [Watt], Pe – Power consumption [kW]

Without liquid subcooling 50Hz (R404A/R507A)

Compressor type	Cond. temp. [°C]	Qo / Pe		Evaporating temperature °C								
		-25	-30	-35	-40	-45	-50	-55	-60	-65	-70	
S6F-30.2Y	30	Qo	38050	31700	26050	21000	16620	12880	9790	7280	5300	3760
Pe	1,26	18,81	16,61	14,64	12,90	11,37	10,02	8,86	7,85	7,00		
35	Qo	36000	29950	24500	19710	15570	12070	9180	6840	4980	3510	
Pe	22,11	19,66	17,41	15,37	13,53	11,88	10,42	9,13	8,02	5,72		
40	Qo	33800	28000	22900	18390	14530	11280	8590	6400	4620		
Pe	22,95	20,53	18,26	16,15	14,20	12,42	10,82	9,41	8,18			
45	Qo	31450	26050	21250	17080	13510	10500	8000	5920			
Pe	23,82	21,42	19,12	16,94	14,89	13,00	11,26	9,71				
50	Qo	28950	24000	19590	15770	12490	9710	7370				
Pe	24,72	22,31	19,98	17,74	15,61	13,61	11,76					
55	Qo	26400	21900	17890	14430	11440	8880					
Pe	25,67	23,19	20,80	18,52	16,34	14,27						

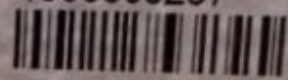
Qo – Cooling capacity [Watt], Pe – Power consumption [kW]



Type S6F-30.2Y-40P

S.No. 1600308267

BITZER KÜHLMASCHINENBAU GMBH
Made in Germany



Nominal Voltage V 3Ph~	Frequ. Hz	Operat. C. A (max.)	Locked Rotor C.		Displacem. m³/h	Speed RPM
			A (Y)	A (YY)		
380-420	50	51	135	220	101,4	1450
440-480	60	51	135	220	122	1750

IP 54 LP/HP max. 19 / 28 bar





Private Picture Copyright : WWW.MBSM.PRO

Mbsm_dot_pro_private_PDF_S6F-30.2Y-40PTélécharger

Compressor type Displacement at 1450 min-1 Number of cylinders Oil charge Weight Pipe connections Motor Max. operating current Max. power consumption Starting

current(lockedrotor)LPHPDLSLdm3KgmpouceAmpkW
Y/YY56F-30.2Y101,150,567.752343513/842
5415/8
21/8380 ..420YY/3/50
440 ..480 YY/3/605131,9135/220

**GP14TB, R-134a, 3/8HP++, 230V, Haute
Pression, CUBIGEL/HUAYI,
Décalage: 14.17 cm³**

Category: compressor
written by www.mbsm.pro | 29 December 2021



Private Picture Copyright : WWW.MBSM.PRO

- CUBIGEL/HUAYI
- Original

Données techniques

- Modèle: GP14TB
- Gaz: R-134a
- Température/Pression: Haute Pression
- Puissance: 3/8 HP
- Type De Courant: Monophasé
- Fréquence: 50 Hz
- Type De Compresseur: Hermétique
- Décalage: 14.17 cm³

- Cons.Énergie -10°C: **366 W**
- Cons.Énergie -5°C: **406 W**
- Cons.Énergie 0°C: **448 W**
- Cons.Énergie +5°C: **491 W**
- Cons.Énergie +10°C: **536 W**
- T° De Condensation: **40 °C**
- Capacidad Frigorífica -15°C: **489 Kcal/h**
- Capacidad Frigorífica -10°C: **634 Kcal/h**
- Capacidad Frigorífica -5°C: **800 Kcal/h**
- Capacidad Frigorífica 0°C: **986 Kcal/h**
- Capacidad Frigorífica 5°C: **1193 Kcal/h**
- Capacidad Frigorífica 7.2°C: **1291 Kcal/h**
- Capacidad Frigorífica 10°C: **1421 Kcal/h**
- Tipo Test: **Ashare 46**



Private Picture Copyright : WWW.MBSM.PRO

3070051	alternative part number	605011	رقم القطعة
GP14TB	type	R134a	refrigerant
W 566	power input	HP 3/8	power
CSIR	motor system	cm ³ 14	cylinder capacity
mm 203.6	height	V 220-240	voltage
W 643	power at -5°C	W 497	power at -10°C
W 999	power at +5°C	W 810	power at 0°C
W 271	power at -20°C	W 191	power at -25°C
W 1209	power at +10°C	W 373	power at -15°C
HMBP	application	ASHRAE	test method
C° 43	.ambient temperature max	Hz 50	frequency
		kg 11.5	weight



Private Picture Copyright : WWW.MBSM.PRO

Compressor, hermetic, medium temperature, 7 HP, r22, POE, MT80HP4, MT80 HP4, 400/3/50, 460/3/60 volt, 1-3/4" RL – 1-1/8" x 1-1/4" RL – 3/4"

Category: compressor

written by www.mbsm.pro | 29 December 2021



Private Picture Copyright : WWW.MBSM.PRO

Product details

Gross weight 41.58 kg

Net weight 39.1 kg

EAN 5702428839525

Approval standard	CE UL
Brand technique	Reciprocating compressor
Capacity control	Fixed speed
Colour	Blue
Compressor power supply [V/Ph/Hz]	400/3/50 460/3/60
Configuration code	Single
Connection type	Rotolock
Cylinder	2
Description	MT080-4
Diameter [mm]	288 mm
Discharge connection height [mm]	74 mm
Discharge connection mounting torque [Nm]	90 Nm
Discharge connection pipe size [in]	3/4 in
Discharge connection rotolock size [in]	1 1/4 in
Discharge connection size [in]	1 1/4 in
Discharge connection sleeve pipe size [in]	3/4 in
Drawing number	8502012g
Economizer	No
Factory HP [bar]	25 bar
Factory LP [bar]	25 bar
Fitting remark	(shipped with rotolock version only)
Fitting sleeve	ODF
Fitting standard	Rotolock
Frequency [Hz]	50/60
Gauge port HP	None
Gauge port LP	Schrader
Generation code	B
Glass mounting	Threaded
Glass torque [Nm]	50 Nm
GP LP torque [Nm]	15 Nm
High side max pressure (Ps)	27.8 bar
High Side TS Max	150 °C
High Side TS Min	-35 °C
High Side Volume	0.6 L
High value of nominal voltage at 50Hz [V]	400 V
High value of nominal voltage at 60Hz [V]	460 V
High value of voltage range at 50Hz [V]	460 V
High value of voltage range at 60Hz [V]	506 V
IP protection class	IP55 (with cable gland)
Low side max pressure (Ps)	18.4 bar
Low Side TS Max	50 °C
Low Side TS Min	-35 °C
Low Side Volume	16.5 L
Low value of nominal voltage at 50Hz [V]	380 V
Low value of nominal voltage at 60Hz [V]	460 V

Low value of voltage range at 50Hz [V]	340 V
Low value of voltage range at 60Hz [V]	414 V
LRA	80 A
MCC	18 A
Model number	MT80HP4AVE
Motor protection	Internal overload protector
Mounting torque [Nm]	15 Nm
Nominal cooling capacity 60 kBTU/h	80.2 kBtu/h
Nominal cooling capacity at 50Hz	17.8 kW
Nominal cooling capacity at 60Hz	23.5 kW
Number of starts per hour [Max]	12
Oil charge [L]	1.8 L
Oil equalization	3/8" flare SAE
Oil equalization torque [Nm]	30 Nm
Oil reference	160P
Packaging height [mm]	455 mm
Packaging length [mm]	395 mm
Packaging weight [Kg]	44 kg
Packaging width [mm]	365 mm
Packing format	Single pack
Packing quantity	1
Phase	3
Power connections	Spade
Refrigerant	R22
Refrigerant charge [kg] [Max]	5 kg
Relief valve	30 bar/8 bar
Rotational speed at 50Hz [rpm]	2900 rpm
Rotational speed at 60Hz [rpm]	3500 rpm
Segment usage	Air conditioning Refrigeration MT
Shipped fittings	Suction and discharge solder sleeves, rotolock nuts and gaskets
Shipped instructions	Installation instructions
Shipped mounting	Mounting kit with grommets, bolts, nuts, sleeves and washers
Shipped oil	Initial oil charge
Suction connection height [mm]	265 mm
Suction connection mounting torque [Nm]	110 Nm
Suction connection pipe size [in]	1 1/8 in
Suction connection rotolock size [in]	1 3/4 in
Suction connection size [in]	1 3/4 in
Suction connection sleeve pipe size [in]	1 1/8 in
Swept volume [cm ³]	135.78 cm ³
Technology	Reciprocating
Test dif [bar] [Max]	30 bar

Test HP [bar] [Max]	30 bar
Test LP [bar] [Max]	25 bar
Torque earth [Nm]	3 Nm
Torque power [Nm]	3 Nm
Total height [mm]	413 mm
Type	MT
Type designation	Compressor
Viscosity [cP]	32 cP
Winding resistance for three-phase compressors with identical windings [Ohm]	1.94 Ohm

Description

Product details

Gross weight 44.5 kg
Net weight 42 kg
EAN 5702428839525
Gross weight 44.5 kg
Net weight 42 kg
EAN 5702428839525

Approval standard	CE UL
Brand technique	Reciprocating compressor
Capacity control	Fixed speed
Colour	Blue
Compressor power supply [V/Ph/Hz]	400/3/50 460/3/60
Configuration code	Single
Connection type	Rotolock
Cylinder	2
Description	MT080-4
Diameter [mm]	288 mm
Discharge connection height [mm]	74 mm
Discharge connection mounting torque [Nm]	90 N-m
Discharge connection pipe size [in]	3/4 in
Discharge connection rotolock size [in]	1 1/4 in
Discharge connection size [in]	1 1/4 in
Discharge connection sleeve pipe size [in]	3/4 in
Drawing number	8502012g
Economizer	No
Factory HP [bar]	25 bar
Factory LP [bar]	25 bar
Fitting remark	(shipped with rotolock version only)
Fitting sleeve	ODF

Fitting standard	Rotolock
Frequency [Hz]	50/60
Gauge port HP	None
Gauge port LP	Schrader
Generation code	B
Glass mounting	Threaded
Glass torque [Nm]	50 N-m
GP LP torque [Nm]	15 N-m
High side max pressure (Ps)	27.8 bar
High Side TS Max	150 Â°C
High Side TS Min	-35 Â°C
High Side Volume	0.6 L
High value of nominal voltage at 50Hz [V]	400 V
High value of nominal voltage at 60Hz [V]	460 V
High value of voltage range at 50Hz [V]	460 V
High value of voltage range at 60Hz [V]	506 V
IP protection class	IP55 (with cable gland)
Low side max pressure (Ps)	18.4 bar
Low Side TS Max	50 Â°C
Low Side TS Min	-35 Â°C
Low Side Volume	16.5 L
Low value of nominal voltage at 50Hz [V]	380 V
Low value of nominal voltage at 60Hz [V]	460 V
Low value of voltage range at 50Hz [V]	340 V
Low value of voltage range at 60Hz [V]	414 V
LRA	80 A
MCC	18.5 A
Model number	MT80HP4AVE
Motor protection	Internal overload protector
Mounting torque [Nm]	15 N-m
Nominal cooling capacity 60 kBTU/h	80.2 kBTU/h
Nominal cooling capacity at 50Hz	17.8 kW
Nominal cooling capacity at 60Hz	23.5 kW
Number of starts per hour [Max]	12
Oil charge [L]	1.8 L
Oil equalization	3/8" flare SAE
Oil equalization torque [Nm]	30 N-m
Oil reference	160P
Packaging height [mm]	455 mm
Packaging length [mm]	395 mm
Packaging weight [Kg]	44 kg
Packaging width [mm]	365 mm
Packing format	Single pack
Packing quantity	1
Phase	3
Power connections	Spade

Refrigerant	R22
Refrigerant charge [kg] [Max]	5 kg
Relief valve	30 bar/8 bar
Rotational speed at 50Hz [rpm]	2900 rpm
Rotational speed at 60Hz [rpm]	3500 rpm
Segment usage	Air conditioning Refrigeration MT
Shipped fittings	Suction and discharge solder sleeves, rotolock nuts and gaskets
Shipped instructions	Installation instructions
Shipped mounting	Mounting kit with grommets, bolts, nuts, sleeves and washers
Shipped oil	Initial oil charge
Suction connection height [mm]	265 mm
Suction connection mounting torque [Nm]	110 N-m
Suction connection pipe size [in]	1 1/8 in
Suction connection rotolock size [in]	1 3/4 in
Suction connection size [in]	1 3/4 in
Suction connection sleeve pipe size [in]	1 1/8 in
Swept volume [cm ³]	135.78 cm ³
Technology	Reciprocating
Test dif [bar] [Max]	30 bar
Test HP [bar] [Max]	30 bar
Test LP [bar] [Max]	25 bar
Torque earth [Nm]	3 N-m
Torque power [Nm]	3 N-m
Total height [mm]	413 mm
Type	MT
Type designation	Compressor
Viscosity [cP]	32 cP
Winding resistance for three-phase compressors with identical windings [0hm]	1.94 0hm
Approval standard	CE UL
Brand technique	Reciprocating compressor
Capacity control	Fixed speed
Colour	Blue
Compressor power supply [V/Ph/Hz]	400/3/50 460/3/60
Configuration code	Single
Connection type	Rotolock
Cylinder	2
Description	MT080-4
Diameter [mm]	288 mm
Discharge connection height [mm]	74 mm
Discharge connection mounting torque [Nm]	90 N-m

Discharge connection pipe size [in]	3/4 in
Discharge connection rotolock size [in]	1 1/4 in
Discharge connection size [in]	1 1/4 in
Discharge connection sleeve pipe size [in]	3/4 in
Drawing number	8502012g
Economizer	No
Factory HP [bar]	25 bar
Factory LP [bar]	25 bar
Fitting remark	(shipped with rotolock version only)
Fitting sleeve	ODF
Fitting standard	Rotolock
Frequency [Hz]	50/60
Gauge port HP	None
Gauge port LP	Schrader
Generation code	B
Glass mounting	Threaded
Glass torque [Nm]	50 N-m
GP LP torque [Nm]	15 N-m
High side max pressure (Ps)	27.8 bar
High Side TS Max	150 Â°C
High Side TS Min	-35 Â°C
High Side Volume	0.6 L
High value of nominal voltage at 50Hz [V]	400 V
High value of nominal voltage at 60Hz [V]	460 V
High value of voltage range at 50Hz [V]	460 V
High value of voltage range at 60Hz [V]	506 V
IP protection class	IP55 (with cable gland)
Low side max pressure (Ps)	18.4 bar
Low Side TS Max	50 Â°C
Low Side TS Min	-35 Â°C
Low Side Volume	16.5 L
Low value of nominal voltage at 50Hz [V]	380 V
Low value of nominal voltage at 60Hz [V]	460 V
Low value of voltage range at 50Hz [V]	340 V
Low value of voltage range at 60Hz [V]	414 V
LRA	80 A
MCC	18.5 A
Model number	MT80HP4AVE
Motor protection	Internal overload protector
Mounting torque [Nm]	15 N-m
Nominal cooling capacity 60 kBTU/h	80.2 kBTU/h
Nominal cooling capacity at 50Hz	17.8 kW
Nominal cooling capacity at 60Hz	23.5 kW
Number of starts per hour [Max]	12
Oil charge [L]	1.8 L

Oil equalization	3/8" flare SAE
Oil equalization torque [Nm]	30 N-m
Oil reference	160P
Packaging height [mm]	455 mm
Packaging length [mm]	395 mm
Packaging weight [Kg]	44 kg
Packaging width [mm]	365 mm
Packing format	Single pack
Packing quantity	1
Phase	3
Power connections	Spade
Refrigerant	R22
Refrigerant charge [kg] [Max]	5 kg
Relief valve	30 bar/8 bar
Rotational speed at 50Hz [rpm]	2900 rpm
Rotational speed at 60Hz [rpm]	3500 rpm
Segment usage	Air conditioning Refrigeration MT
Shipped fittings	Suction and discharge solder sleeves, rotolock nuts and gaskets
Shipped instructions	Installation instructions
Shipped mounting	Mounting kit with grommets, bolts, nuts, sleeves and washers
Shipped oil	Initial oil charge
Suction connection height [mm]	265 mm
Suction connection mounting torque [Nm]	110 N-m
Suction connection pipe size [in]	1 1/8 in
Suction connection rotolock size [in]	1 3/4 in
Suction connection size [in]	1 3/4 in
Suction connection sleeve pipe size [in]	1 1/8 in
Swept volume [cm ³]	135.78 cm ³
Technology	Reciprocating
Test dif [bar] [Max]	30 bar
Test HP [bar] [Max]	30 bar
Test LP [bar] [Max]	25 bar
Torque earth [Nm]	3 N-m
Torque power [Nm]	3 N-m
Total height [mm]	413 mm
Type	MT
Type designation	Compressor
Viscosity [cP]	32 cP
Winding resistance for three-phase compressors with identical windings [Ohm]	1.94 Ohm

Refrigerant: R22, Segment usage: Air conditioning;Refrigeration MT, Compressor power supply [V/Ph/Hz]: 400/3/50 460/3/60

Product details

Gross weight 44.5 kg

Net weight 42 kg

EAN 5702428839525

Gross weight 44.5 kg

Net weight 42 kg

EAN 5702428839525

Approval standard	CE UL
Brand technique	Reciprocating compressor
Capacity control	Fixed speed
Colour	Blue
Compressor power supply [V/Ph/Hz]	400/3/50 460/3/60
Configuration code	Single
Connection type	Rotolock
Cylinder	2
Description	MT080-4
Diameter [mm]	288 mm
Discharge connection height [mm]	74 mm
Discharge connection mounting torque [Nm]	90 N-m
Discharge connection pipe size [in]	3/4 in
Discharge connection rotolock size [in]	1 1/4 in
Discharge connection size [in]	1 1/4 in
Discharge connection sleeve pipe size [in]	3/4 in
Drawing number	8502012g
Economizer	No
Factory HP [bar]	25 bar
Factory LP [bar]	25 bar
Fitting remark	(shipped with rotolock version only)
Fitting sleeve	ODF
Fitting standard	Rotolock
Frequency [Hz]	50/60
Gauge port HP	None
Gauge port LP	Schrader
Generation code	B
Glass mounting	Threaded
Glass torque [Nm]	50 N-m
GP LP torque [Nm]	15 N-m
High side max pressure (Ps)	27.8 bar
High Side TS Max	150 Â°C
High Side TS Min	-35 Â°C

High Side Volume	0.6 L
High value of nominal voltage at 50Hz [V]	400 V
High value of nominal voltage at 60Hz [V]	460 V
High value of voltage range at 50Hz [V]	460 V
High value of voltage range at 60Hz [V]	506 V
IP protection class	IP55 (with cable gland)
Low side max pressure (Ps)	18.4 bar
Low Side TS Max	50 Â°C
Low Side TS Min	-35 Â°C
Low Side Volume	16.5 L
Low value of nominal voltage at 50Hz [V]	380 V
Low value of nominal voltage at 60Hz [V]	460 V
Low value of voltage range at 50Hz [V]	340 V
Low value of voltage range at 60Hz [V]	414 V
LRA	80 A
MCC	18.5 A
Model number	MT80HP4AVE
Motor protection	Internal overload protector
Mounting torque [Nm]	15 N-m
Nominal cooling capacity 60 kBTU/h	80.2 kBtu/h
Nominal cooling capacity at 50Hz	17.8 kW
Nominal cooling capacity at 60Hz	23.5 kW
Number of starts per hour [Max]	12
Oil charge [L]	1.8 L
Oil equalization	3/8" flare SAE
Oil equalization torque [Nm]	30 N-m
Oil reference	160P
Packaging height [mm]	455 mm
Packaging length [mm]	395 mm
Packaging weight [Kg]	44 kg
Packaging width [mm]	365 mm
Packing format	Single pack
Packing quantity	1
Phase	3
Power connections	Spade
Refrigerant	R22
Refrigerant charge [kg] [Max]	5 kg
Relief valve	30 bar/8 bar
Rotational speed at 50Hz [rpm]	2900 rpm
Rotational speed at 60Hz [rpm]	3500 rpm
Segment usage	Air conditioning Refrigeration MT
Shipped fittings	Suction and discharge solder sleeves, rotolock nuts and gaskets
Shipped instructions	Installation instructions

Shipped mounting	Mounting kit with grommets, bolts, nuts, sleeves and washers
Shipped oil	Initial oil charge
Suction connection height [mm]	265 mm
Suction connection mounting torque [Nm]	110 N-m
Suction connection pipe size [in]	1 1/8 in
Suction connection rotolock size [in]	1 3/4 in
Suction connection size [in]	1 3/4 in
Suction connection sleeve pipe size [in]	1 1/8 in
Swept volume [cm ³]	135.78 cm ³
Technology	Reciprocating
Test dif [bar] [Max]	30 bar
Test HP [bar] [Max]	30 bar
Test LP [bar] [Max]	25 bar
Torque earth [Nm]	3 N-m
Torque power [Nm]	3 N-m
Total height [mm]	413 mm
Type	MT
Type designation	Compressor
Viscosity [cP]	32 cP
Winding resistance for three-phase compressors with identical windings [Ohm]	1.94 Ohm
Approval standard	CE UL
Brand technique	Reciprocating compressor
Capacity control	Fixed speed
Colour	Blue
Compressor power supply [V/Ph/Hz]	400/3/50 460/3/60
Configuration code	Single
Connection type	Rotolock
Cylinder	2
Description	MT080-4
Diameter [mm]	288 mm
Discharge connection height [mm]	74 mm
Discharge connection mounting torque [Nm]	90 N-m
Discharge connection pipe size [in]	3/4 in
Discharge connection rotolock size [in]	1 1/4 in
Discharge connection size [in]	1 1/4 in
Discharge connection sleeve pipe size [in]	3/4 in
Drawing number	8502012g
Economizer	No
Factory HP [bar]	25 bar
Factory LP [bar]	25 bar
Fitting remark	(shipped with rotolock version only)
Fitting sleeve	ODF

Fitting standard	Rotolock
Frequency [Hz]	50/60
Gauge port HP	None
Gauge port LP	Schrader
Generation code	B
Glass mounting	Threaded
Glass torque [Nm]	50 N-m
GP LP torque [Nm]	15 N-m
High side max pressure (Ps)	27.8 bar
High Side TS Max	150 Â°C
High Side TS Min	-35 Â°C
High Side Volume	0.6 L
High value of nominal voltage at 50Hz [V]	400 V
High value of nominal voltage at 60Hz [V]	460 V
High value of voltage range at 50Hz [V]	460 V
High value of voltage range at 60Hz [V]	506 V
IP protection class	IP55 (with cable gland)
Low side max pressure (Ps)	18.4 bar
Low Side TS Max	50 Â°C
Low Side TS Min	-35 Â°C
Low Side Volume	16.5 L
Low value of nominal voltage at 50Hz [V]	380 V
Low value of nominal voltage at 60Hz [V]	460 V
Low value of voltage range at 50Hz [V]	340 V
Low value of voltage range at 60Hz [V]	414 V
LRA	80 A
MCC	18.5 A
Model number	MT80HP4AVE
Motor protection	Internal overload protector
Mounting torque [Nm]	15 N-m
Nominal cooling capacity 60 kBTU/h	80.2 kBtu/h
Nominal cooling capacity at 50Hz	17.8 kW
Nominal cooling capacity at 60Hz	23.5 kW
Number of starts per hour [Max]	12
Oil charge [L]	1.8 L
Oil equalization	3/8" flare SAE
Oil equalization torque [Nm]	30 N-m
Oil reference	160P
Packaging height [mm]	455 mm
Packaging length [mm]	395 mm
Packaging weight [Kg]	44 kg
Packaging width [mm]	365 mm
Packing format	Single pack
Packing quantity	1
Phase	3
Power connections	Spade

Refrigerant	R22
Refrigerant charge [kg] [Max]	5 kg
Relief valve	30 bar/8 bar
Rotational speed at 50Hz [rpm]	2900 rpm
Rotational speed at 60Hz [rpm]	3500 rpm
Segment usage	Air conditioning Refrigeration MT
Shipped fittings	Suction and discharge solder sleeves, rotolock nuts and gaskets
Shipped instructions	Installation instructions
Shipped mounting	Mounting kit with grommets, bolts, nuts, sleeves and washers
Shipped oil	Initial oil charge
Suction connection height [mm]	265 mm
Suction connection mounting torque [Nm]	110 N-m
Suction connection pipe size [in]	1 1/8 in
Suction connection rotolock size [in]	1 3/4 in
Suction connection size [in]	1 3/4 in
Suction connection sleeve pipe size [in]	1 1/8 in
Swept volume [cm ³]	135.78 cm ³
Technology	Reciprocating
Test dif [bar] [Max]	30 bar
Test HP [bar] [Max]	30 bar
Test LP [bar] [Max]	25 bar
Torque earth [Nm]	3 N-m
Torque power [Nm]	3 N-m
Total height [mm]	413 mm
Type	MT
Type designation	Compressor
Viscosity [cP]	32 cP
Winding resistance for three-phase compressors with identical windings [Ohm]	1.94 Ohm







Private Picture Copyright : WWW.MBSM.PRO

[Mbsm_dot_pro_private_PDF_MTZ80HP4-1Télécharger](#)

[Mbsm_dot_pro_private_PDF_MTZ80HP4Télécharger](#)

Compresseur à piston Danfoss Maneurop MT22JC5PVE (2.0HP / 1PH) Compresseur à piston Danfoss Maneurop MT22JC4AVE (2.0HP / 3PH) Compresseur à piston Danfoss Maneurop MT28JC5PVE (2.3HP / 1PH) Compresseur à piston Danfoss Maneurop MT22JC4AVE (2.0HP / 3PH) Compresseur à piston Danfoss Maneurop MT28JC5PVE (2.3HP / 1PH) Compresseur à piston Danfoss Maneurop 3PH (2.3HP / 1PH) 2.6HP / 1PH) Compresseur à piston Danfoss Maneurop MT32JF4DVE (2.6HP / 3PH); Compresseur à piston Danfoss Maneurop MT36JG5CVE (3.0HP / 1PH) Compresseur à piston Danfoss Maneurop MT36JG4FVE (3.0HP / 3PH) Compresseur à piston Danfoss Maneurop MT40JH4EVE (3.3HP / 3PH) Danfoss Maneurop Compresseur à piston MT36JG4FVE (3.0HP / 3PH) Compresseur à piston Danfoss Maneurop MT40JH4EVE (3.3HP / 3PH) Danfoss Maneurop Compresseur à piston MT36JG4FVE (3.0HP / 3PH) Compresseur à piston Danfoss Maneurop MT40JH4EVE (3.3HP / 3PH) Compresseur à piston Danfoss Maneurop 3KFHB4 (3.6HP / 3PH) 4.0HP / 3PH) Compresseur à piston Danfoss Maneurop MT56HL4BVE (4.6HP / 3PH) Compresseur à piston Danfoss Maneurop MT64HM4DVE (5.3HP / 3PH) Compresseur à piston Danfoss Maneurop MT72HN4AVE (6.0HP / 3PH) Compresseur à piston Danfoss Maneurop MT80HP4AVE (6.6HP / 3PH) Compresseur à piston Danfoss Maneurop MT72HN4AVE (6.0HP / 3PH) Compresseur à piston Danfoss Maneurop MT80HP4AVE (6.6HP / 3PH) Compresseur à piston Danfoss Maneurop 4.0 Compresseur à piston MT144HV4AVE (12,0HP / 3PH) Compresseur à piston Danfoss Maneurop MT160HW4EVE (13.3HP / 3PH) Compresseur à piston Danfoss Maneurop MTZ22JC5VE (2.0HP / 1PH); [R134A, R404] Compresseur à piston Danfoss Maneurop MTZ22JC4AVE

(2.0HP / 3PH); [R134A, R404] Compresseur à piston Danfoss Maneurop MTZ28JE5AVE
(2,3 HP / 1PH); [R134A, R404] Compresseur à piston Danfoss Maneurop MTZ28JE4AVE
(2,3 HP / 3PH); [R134A, R404] Compresseur à piston Danfoss Maneurop MTZ32JF5AVE
(2,6 CV / 1PH); [R134A, R404] Compresseur à piston Danfoss Maneurop MTZ32JF4BVE
(2.6HP / 3PH); [R134A, R404] Compresseur à piston Danfoss Maneurop MTZ36JG5AVE
(3.0HP / 1PH); [R134A, R404] Compresseur à piston Danfoss Maneurop MTZ36JG4BVE
(3.0HP / 3PH); [R134A, R404] Compresseur à piston Danfoss Maneurop MTZ40JH4AVE
(3,3 CV / 3PH); [R134A, R404] Compresseur à piston Danfoss Maneurop MTZ50HK4CVE
(4,0 CV / 3PH); [R134A, R404] Compresseur à piston Danfoss Maneurop MTZ56HL4BVE
(4,6 CV / 3PH); [R134A, R404] Compresseur à piston Danfoss Maneurop MTZ64HM4CVE
(5,3 HP / 3PH); [R134A, R404] Compresseur à piston Danfoss Maneurop MTZ72HN4AVE
(6,0 CV / 3PH); [R134A, R404] Compresseur à piston Danfoss Maneurop MTZ80HP4AVE
(6,6 CV / 3PH); [R134A, R404] Compresseur à piston Danfoss Maneurop MTZ100HS4VE
(8,3 CV / 3 PH); [R134A, R404] Compresseur à piston Danfoss Maneurop MTZ125HU4VE
(10.0HP / 3PH); [R134A, R404] Compresseur à piston Danfoss Maneurop MTZ144HV4AVE
(12,0 HP / 3PH); [R134A, R404] Compresseur à piston Danfoss Maneurop
MTZ160HE4AVE (13,3 HP / 3PH); [R134A, R404] Compresseur à piston Danfoss
Maneurop NTZ048A4LR1A (2.0HP / 3PH); [R134A, R404, R507] Compresseur à piston
Danfoss Maneurop NTZ068A4LR1A (3,5 CV / 3PH); [R134A, R404, R507] Compresseur à
piston Danfoss Maneurop NTZ096A4LR1A (4,5 CV / 3PH); [R134A, R404, R507]
Compresseur à piston Danfoss Maneurop NTZ108A4LR1A (5,0 CV / 3PH); [R134A, R404,
R507] Compresseur à piston Danfoss Maneurop NTZ136A4LR1A (6,5 CV / 3PH); [R134A,
R404, R507] Compresseur à piston Danfoss Maneurop NTZ215A4LR1A (10,0 HP /
3PH); [R134A, R404, R507] Compresseur à piston Danfoss Maneurop NTZ271A4LR1A
(13.0HP / 3PH); [R134A, R404, R507] COMPRESSEUR MANEUROP 2.0HP MT22 MANEUROPE
2.0HP MT22 COMPRESSEUR MANEUROP COMPRESSEUR MTZ-22JE-4VE R404A MANEUROPE 2.30HP
MT28JE-5PVE MT28-5VI / MT28-5VM COMPRESSEUR MANEUROP 2.30HP MT28JE-5PVE MT28-5VI
/ MT28-5VM COMPRESSEUR MANEUROPEUR 2.30H5 / R404A) COMPRESSEUR MANEUROP 2.8HP
MTZ32-5VM (R134a / R404A / R507) COMPRESSEUR MANEUROP MT32JF5MVE 2-3 / 4HP
((R22) COMPRESSEUR MANEUROP 3.0HP MT36JG4FVE (MT36-4VI / MT36-4VM) (R22)
COMPRESSEUR 3.0HP COMPRESSEUR MT36 MANEUROP 3.3HP MT40JH4EVE COMPRESSEUR
MANEUROP 3.3HP MTZ40-JH4AVE COMPRESSEUR (R407A / C / F / R134A / R404A / R507)
Compresseur MANEUROP MTZ-36-JG4AVE (R407C / R134a / R404A-R407C / R134a / R404A)
-Compresseur JH4AVE (R134a / R404A) – Compresseur 3.3HP 3PH MANEUROP MTZ-44-
HJ4AVE (R134a / R404A) – 3. 5HP 3PH MANEUROP 4HP MTZ-50HK-4CVE (MTZ50-4VI /
MTZ50-4VM) COMPRESSEUR (R134A / R404A) MANEUROP MTZ56HL3BVE R407c, R134a, R507a,
R404a compresseur MANEUROP MT-64-4VM COMPRESSEUR MANEUR 64-4VM COMPRESSEUR
MANEUR COMPRESSEUR MT72-4VM COMPRESSEUR MANEUROP MT-80-4VM (6.5HP) Compresseur
MANEUROP 6.6HP MT81HP4AVE COMPRESSEUR MANEUROP MTZ80HM4DVE COMPRESSEUR MANEUROP
8.5HP MT100-4VM COMPRESSEUR MANEUROPE 10HP MT100-4VM (MT100HS4DVE) COMPRESSEUR
10HP MT100-4VM (MT100HS4DVE) COMPRESSEUR MT12M10 MANHOP 4-COMPRESSEUR 10HP R22)
COMPRESSEUR MANEUROP 10HP MTZ125HW4AVE (R404A / R134A / R507 / R407C)
COMPRESSEUR MANEUROPE 12HP MT144-4VM COMPRESSEUR MANEUROPE 13.3HP MT160-4VM
(MT160HW4DVE) COMPRESSEUR MANZVMER 10 COMPRESSEUR MANZVM4 (MT160HW4DVE) / 2 ')
SER. KIT POUR MT-28 MANEUROP 7703009 (1-1 / 8 '& 3/4') SER.

Compressor, LG, GK113P, R410A, 220-240V, 50Hz, 9600 Btu / h, capacitor 35 uF, 1Piston

Category: compressor

written by www.mbsm.pro | 29 December 2021



Refrigerant Type	Frequency	Voltage	Series	Model	Cooling	Capacity	Input	EER	COP	Test Condition	
Btu/hr	Watts	Watts	Btu/W.hr	W/W							
R410A	1piston	50Hz	1 Φ , 220/240V	GA	GA066P	5,270	1,544	555	9.5	2.78	ASHRAE
GA080P	6,550	1,919	668	9.81	2.87						ASHRAE
GA086P	7,050	2,066	735	9.59	2.81						ASHRAE
GAB	GAB040P	3,130	917	340	9.2	2.7					ASHRAE
GAB042P	3,410	999	355	9.6	2.81						ASHRAE
GAB048P	3,985	1,168	403	9.9	2.9						ASHRAE
GAB072P	5,950	1,744	590	10.08	2.95						ASHRAE
GK	GK086P	6,900	2,022	726	9.5	2.79					ASHRAE
GK094P	7,700	2,256	794	9.7	2.84						ASHRAE
GK102P	8,250	2,418	841	9.81	2.87						ASHRAE
GK113P	9,000	2,637	914	9.85	2.89						ASHRAE
GK120P	9,700	2,842	1,010	9.6	2.81						ASHRAE
GK141P	11,350	3,326	1,170	9.7	2.84						ASHRAE
GK151P	12,200	3,575	1,245	9.8	2.87						ASHRAE
GKS	GKS094P	7,700	2,256	755	10.2	2.99					ASHRAE
GKS108P	8,700	2,549	838	10.38	3.04						ASHRAE
GKS113P	8,750	2,564	920	9.51	2.79						ASHRAE
GKS134P	10,900	3,194	1,100	9.91	2.9						ASHRAE
GKS141P	11,500	3,370	1,116	10.3	3.02						ASHRAE
GKS151P	12,230	3,584	1,245	9.82	2.88						ASHRAE
GJ	GJ176P	14,400	4,220	1,485	9.7	2.84					ASHRAE
GJ196P	16,500	4,835	1,705	9.68	2.84						ASHRAE
GJ208P	17,500	5,128	1,750	10	2.93						ASHRAE
GJ222P	18,500	5,421	1,867	9.91	2.9						ASHRAE
GJ230P	19,100	5,597	1,949	9.8	2.87						ASHRAE



Private Picture Copyright : WWW.MBSM.PRO

Mbsm_dot_pro_private_PDF_gk113pTélécharger