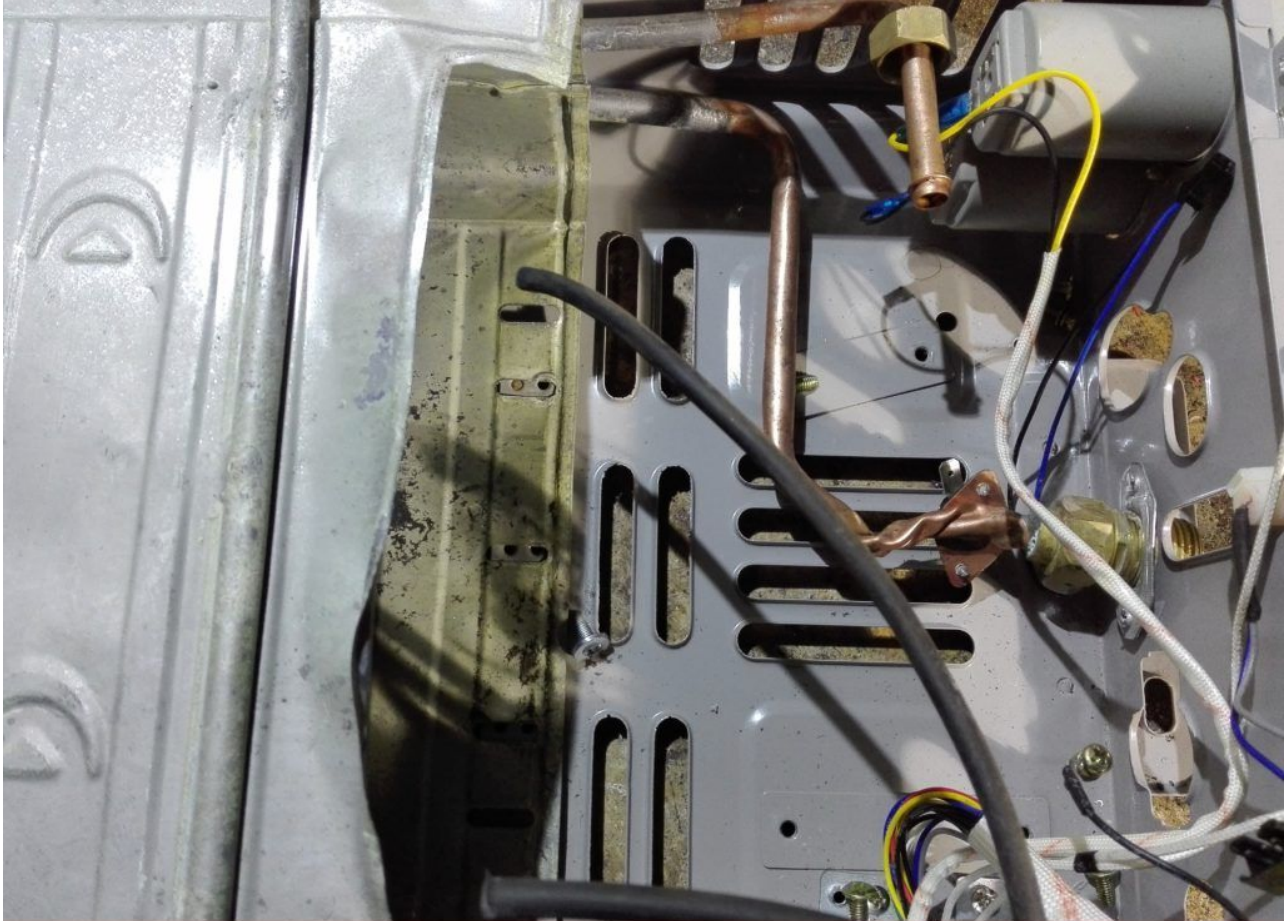


Erreur Grave montage chauffe bain Électronique

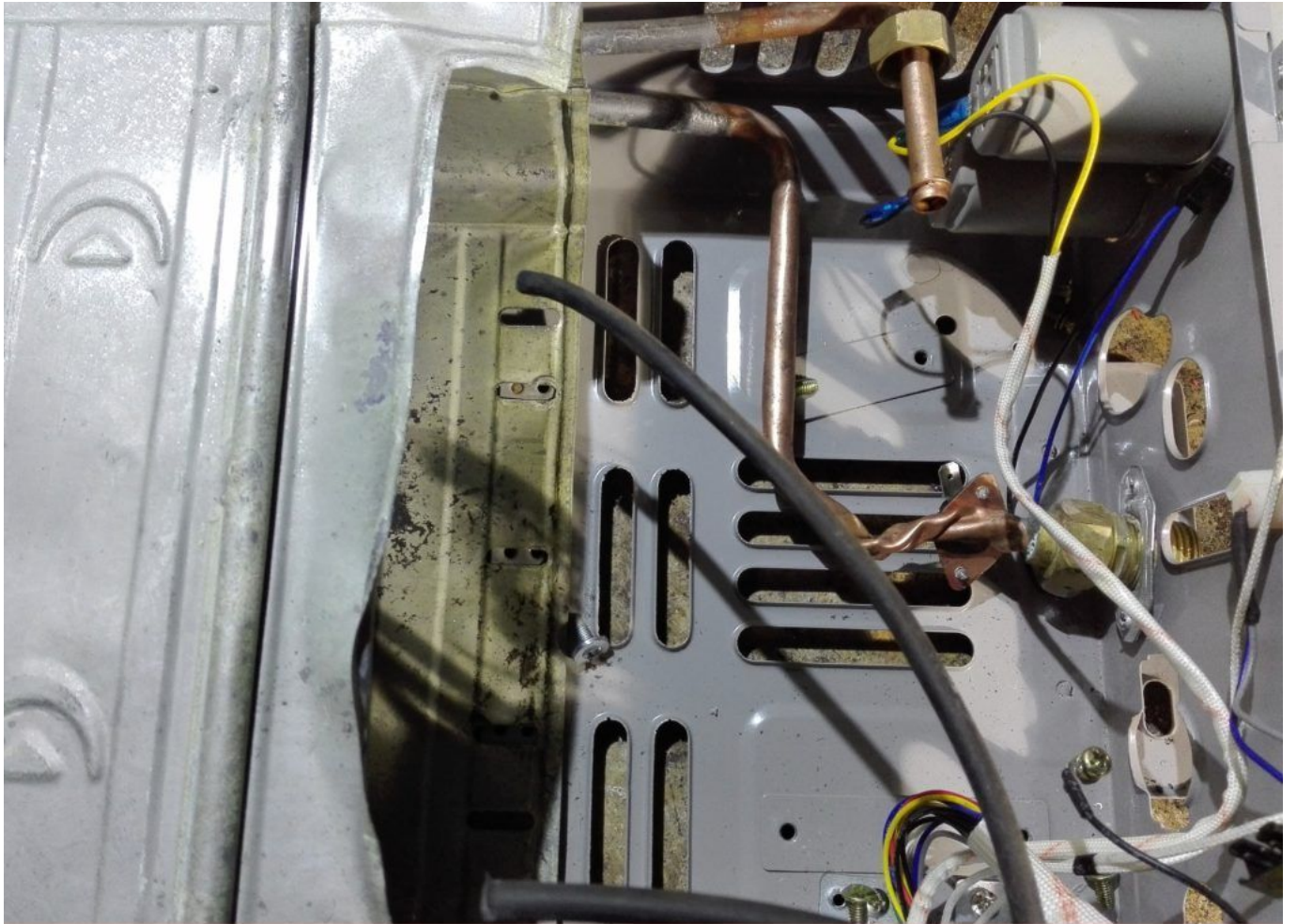
Category: Solutions

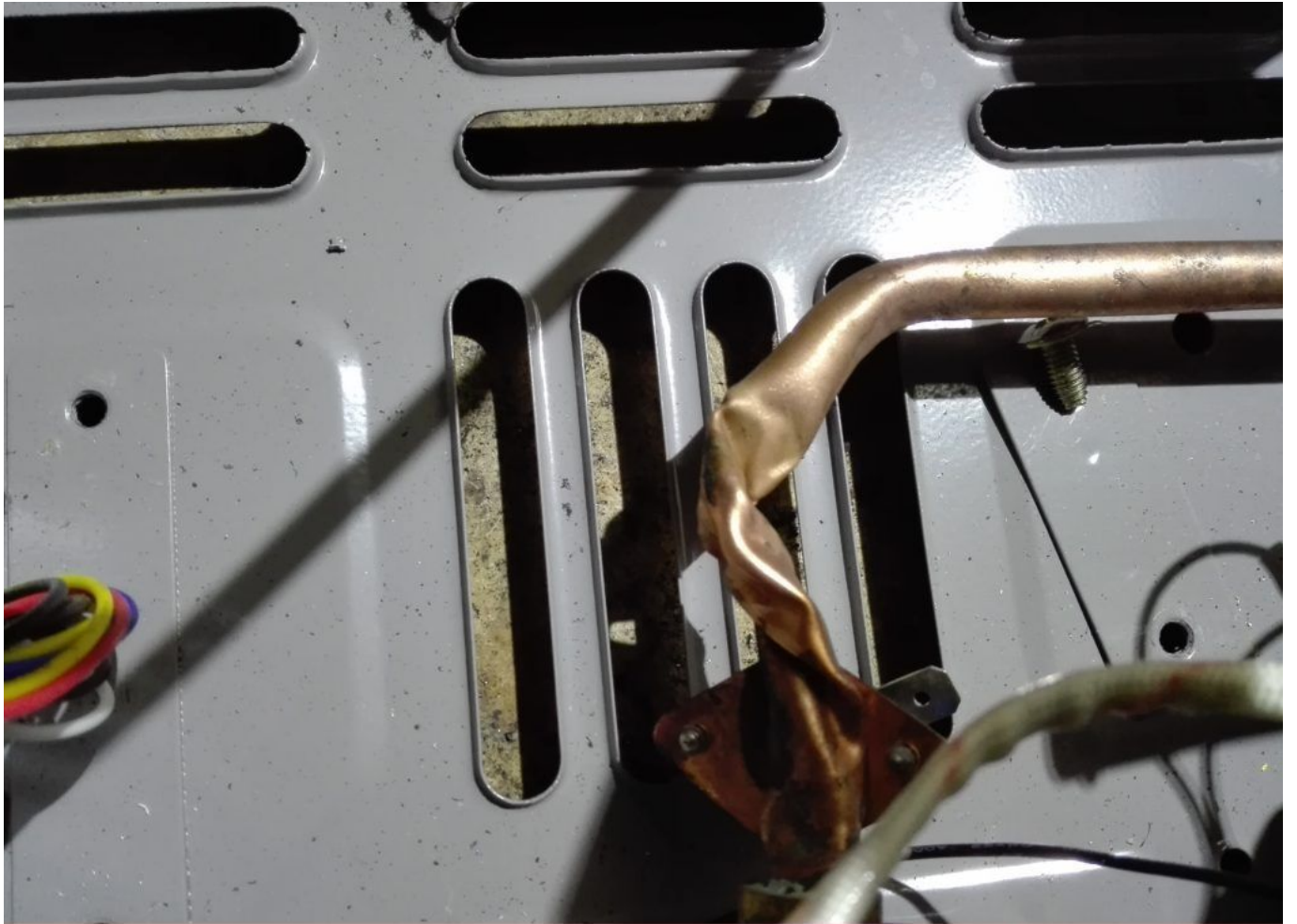
written by www.mbsm.pro | 8 April 2020

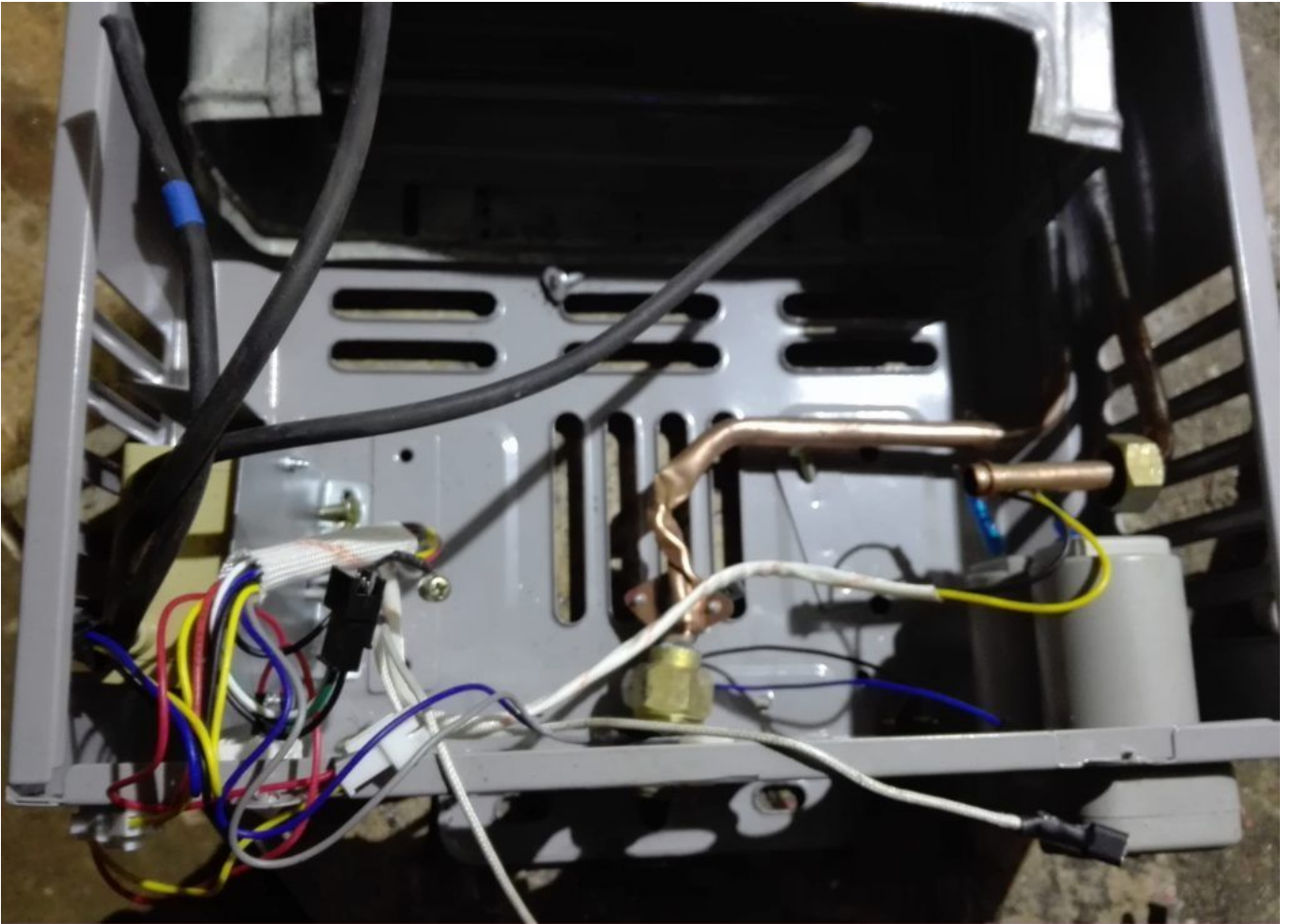


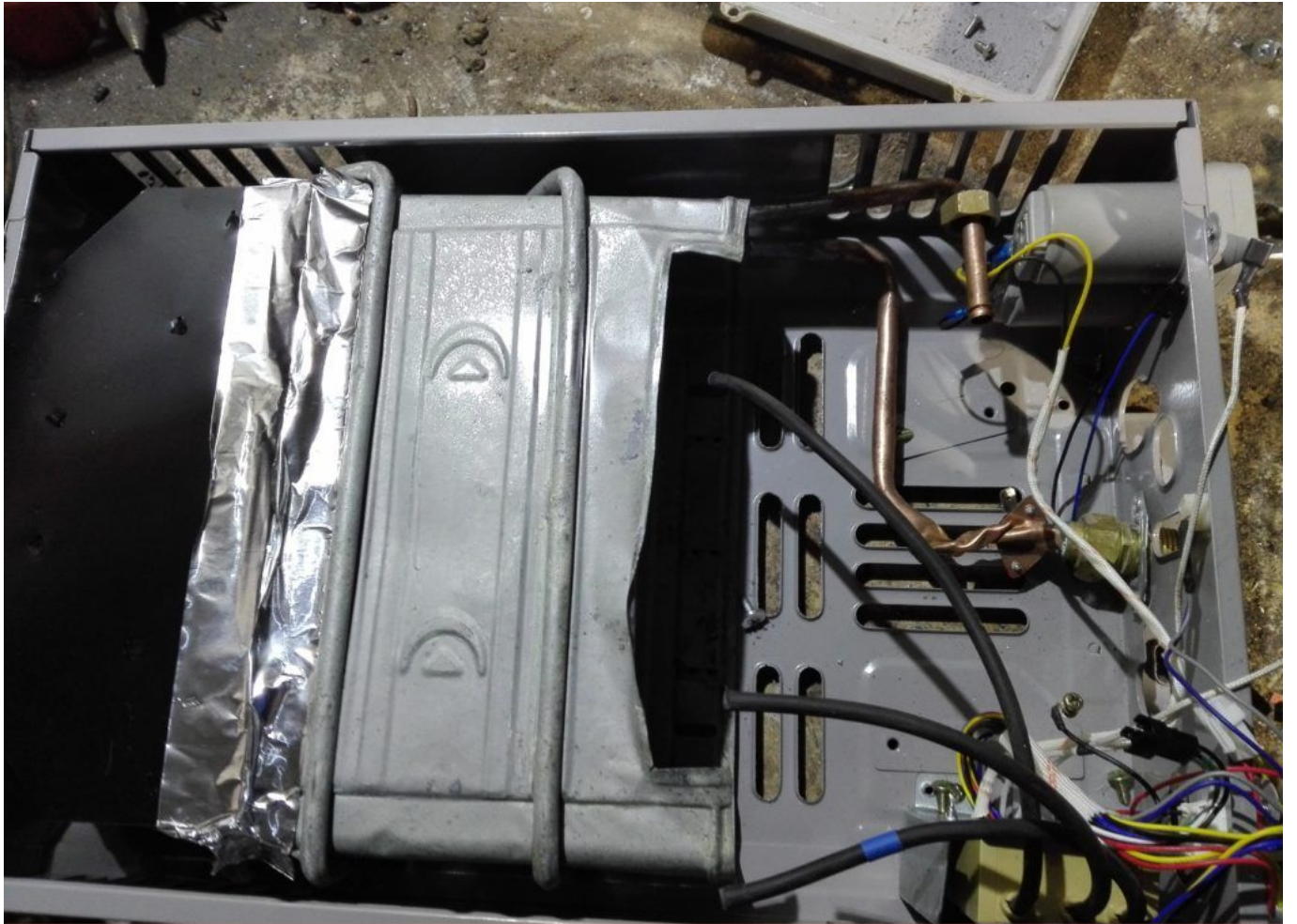
PictureS Mbsm Dot Pro : www.mbsm.pro

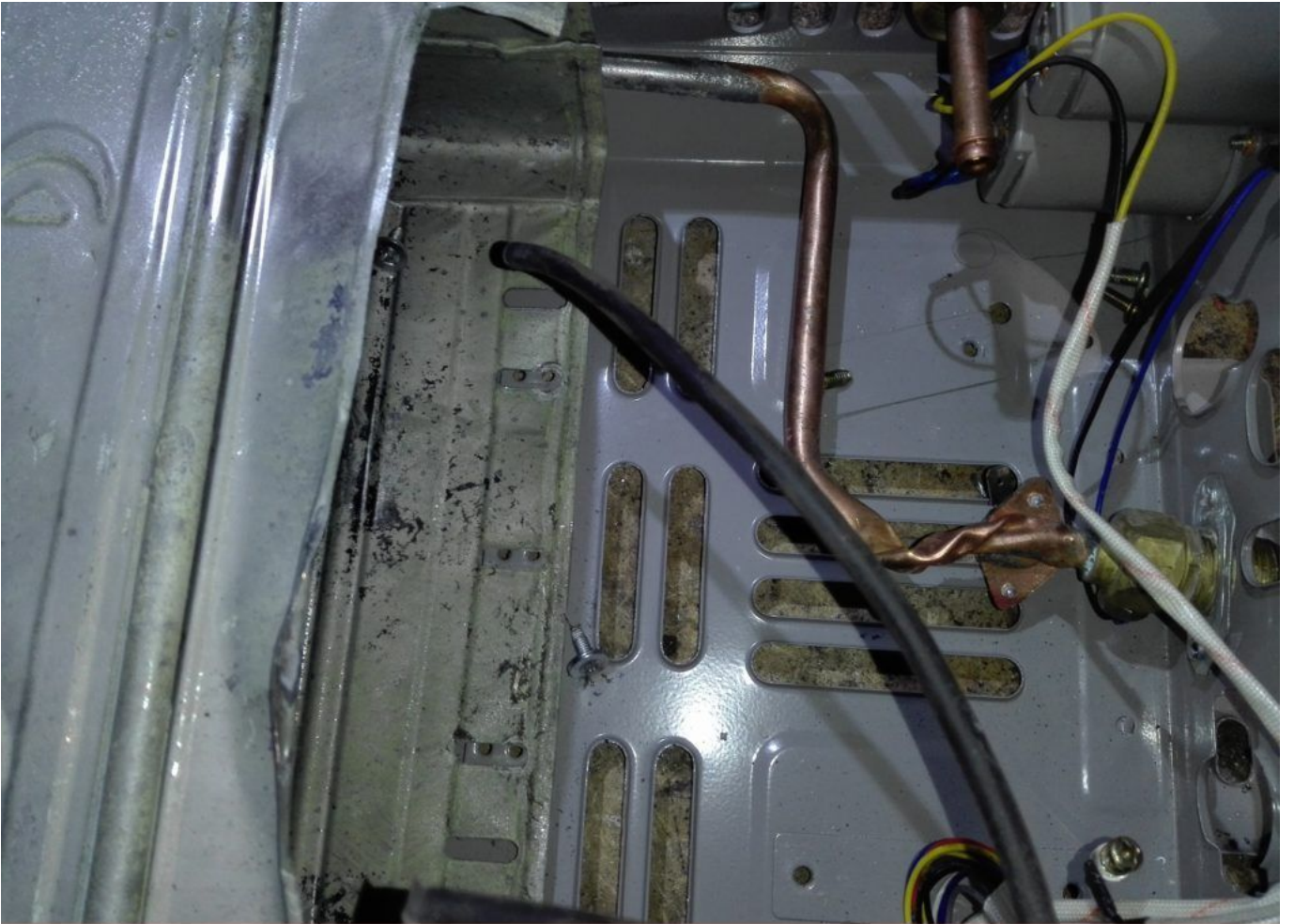
خطأ كبير في تركيب سخان الحمام
Serious bath heater mounting error

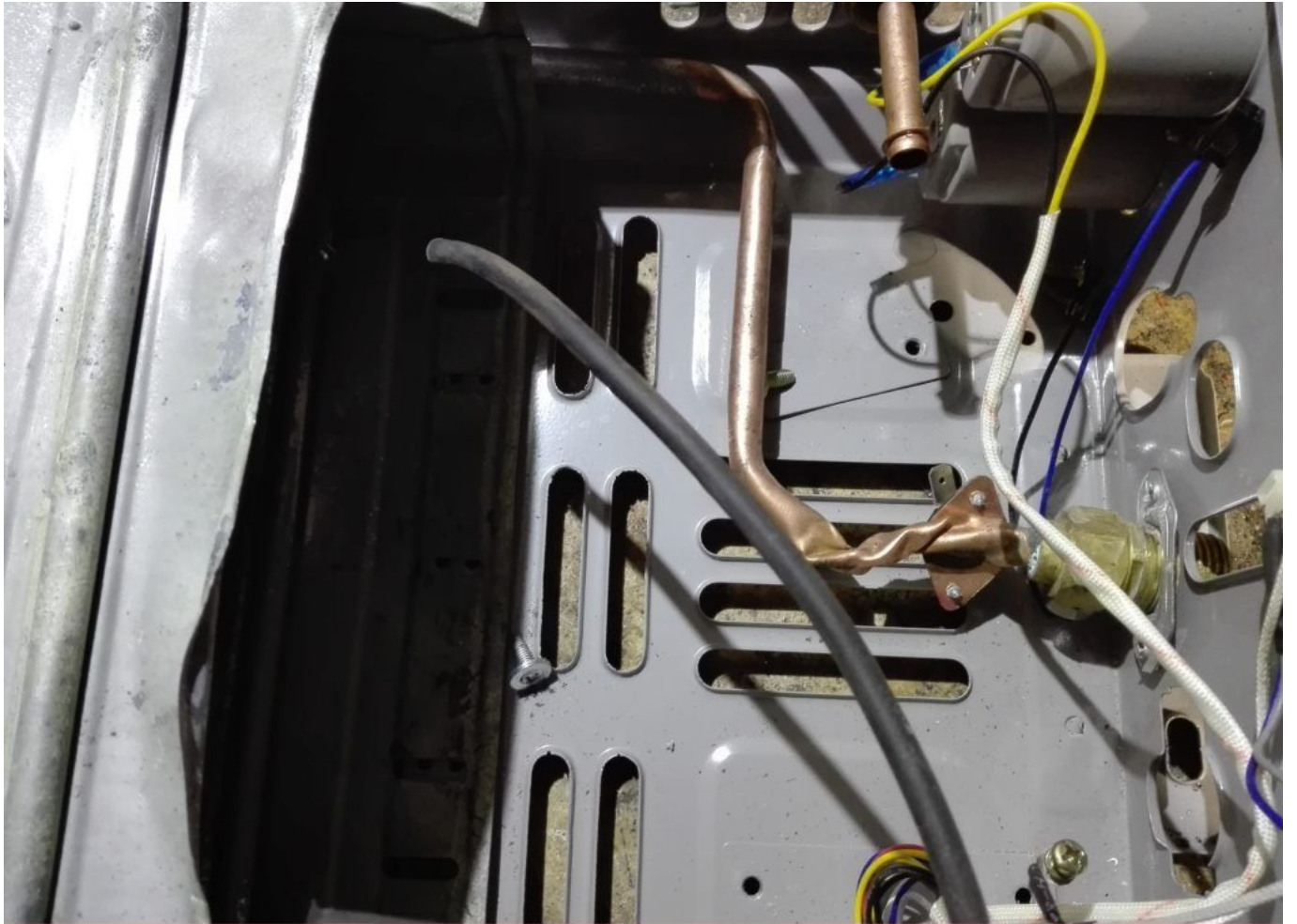




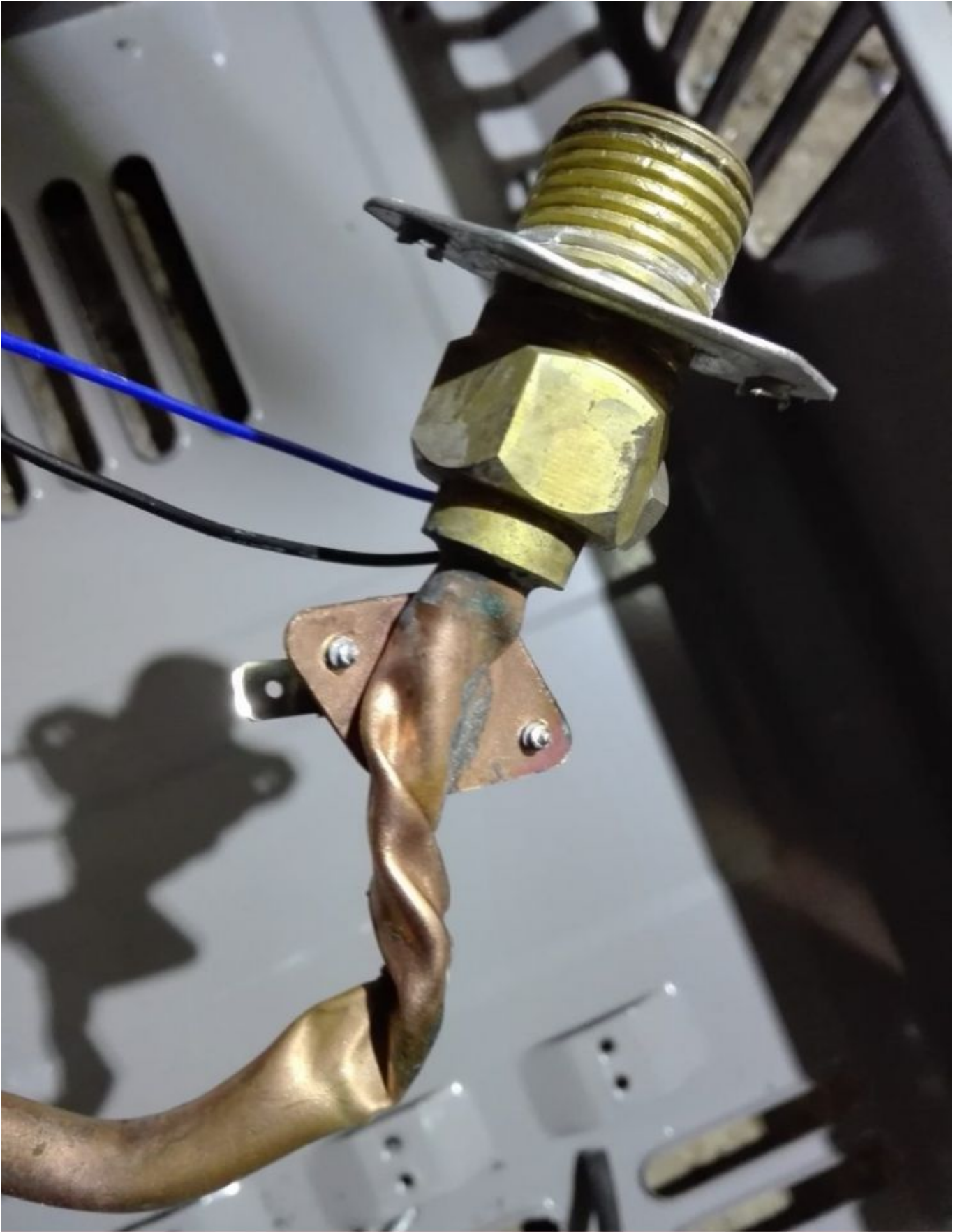


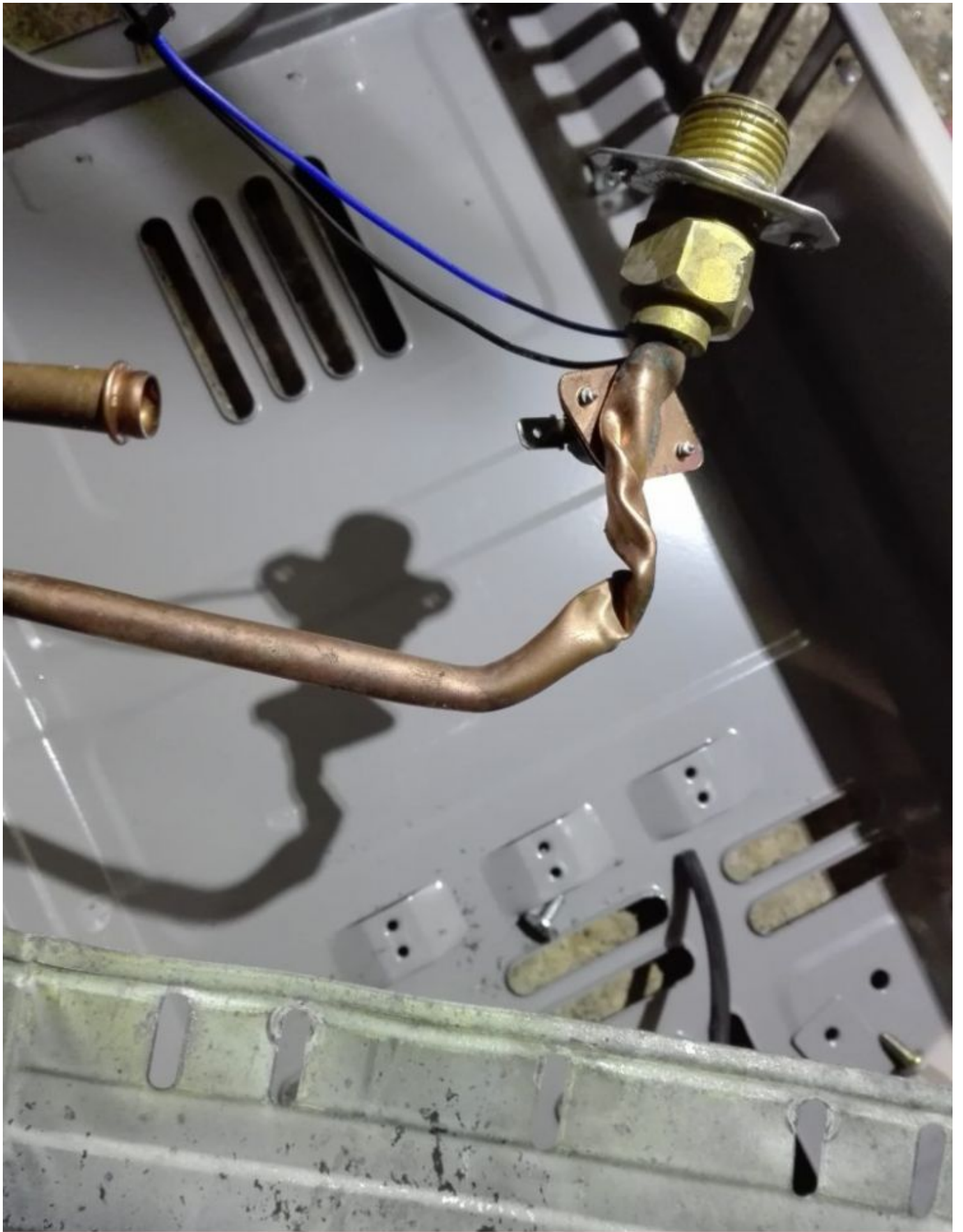












Un petit projet à réaliser .. Une balançoire haute sécurité pour les enfants

Category: Tester ok

written by www.mbsm.pro | 8 April 2020



Picture5 Mbsm Dot Pro ; www.mbsm.pro

مشروع صغير للتنفيذ .. أرجوحة أطفال عالية السلامة

A small project for implementation .. A high-safety swing for children



























Erreur de maintenance chauffe eau solaire

Category: Solutions

written by www.mbsm.pro | 8 April 2020



PictureS Mbsm Dot Pro : www.mbsm.pro

خطأ صيانة سخان المياه بالطاقة الشمسية

Solar water heater maintenance error











PictureS Mbsm Dot Pro : www.mbsm.pro

Cosse et Fiche plat

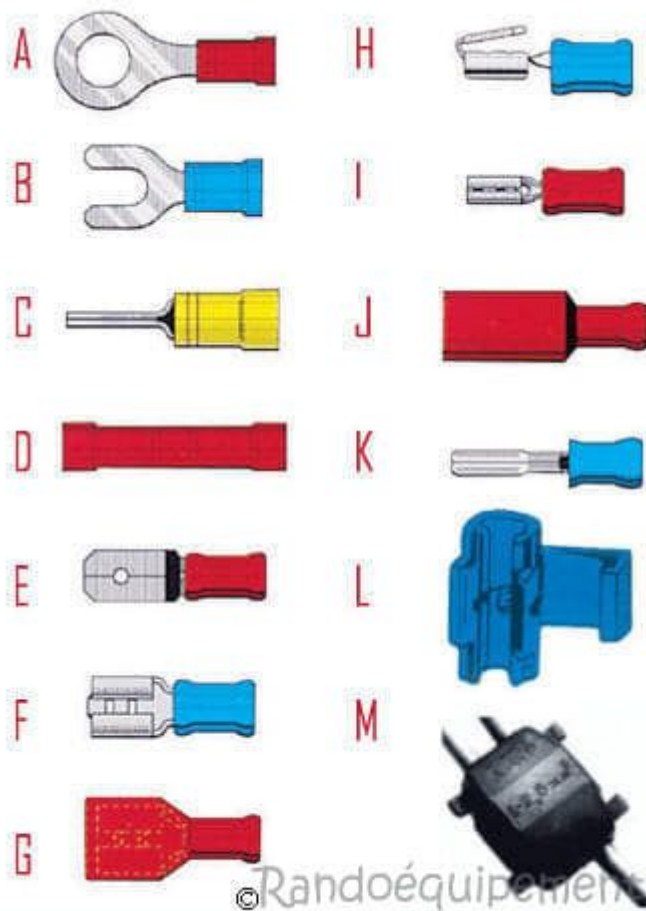
Category: Technologie

written by www.mbsm.pro | 8 April 2020



PictureS Mbsm Dot Pro : www.mbsm.pro

On trouve également sur le marché des **cosses** pour batterie qui diffèrent selon leur surface de contact avec la batterie. Dans cette catégorie d'accessoires de connexion, on peut trouver des boîtes de dérivation, du ruban adhésif ou des bornes et des dominos.



© Randoéquipement

PictureS Mbsm Dot Pro : www.mbsm.pro



PictureS Mbsm Dot Pro : www.mbsm.pro



PictureS Mbsm Dot Pro : www.mbsm.pro



Mbsm Dot Pro : www.mbsm.pro



Mbsm Dot Pro : www.mbsm.pro



PictureS Mbsm Dot Pro : www.mbsm.pro



PictureS Mbsm Dot Pro : www.mbsm.pro



PictureS Mbsm Dot Pro : www.mbsm.pro



PictureS Mbsm Dot Pro : www.mbsm.pro



Mbsm Dot Pro : www.mbsm.pro



Mbsm Dot Pro : www.mbsm.pro

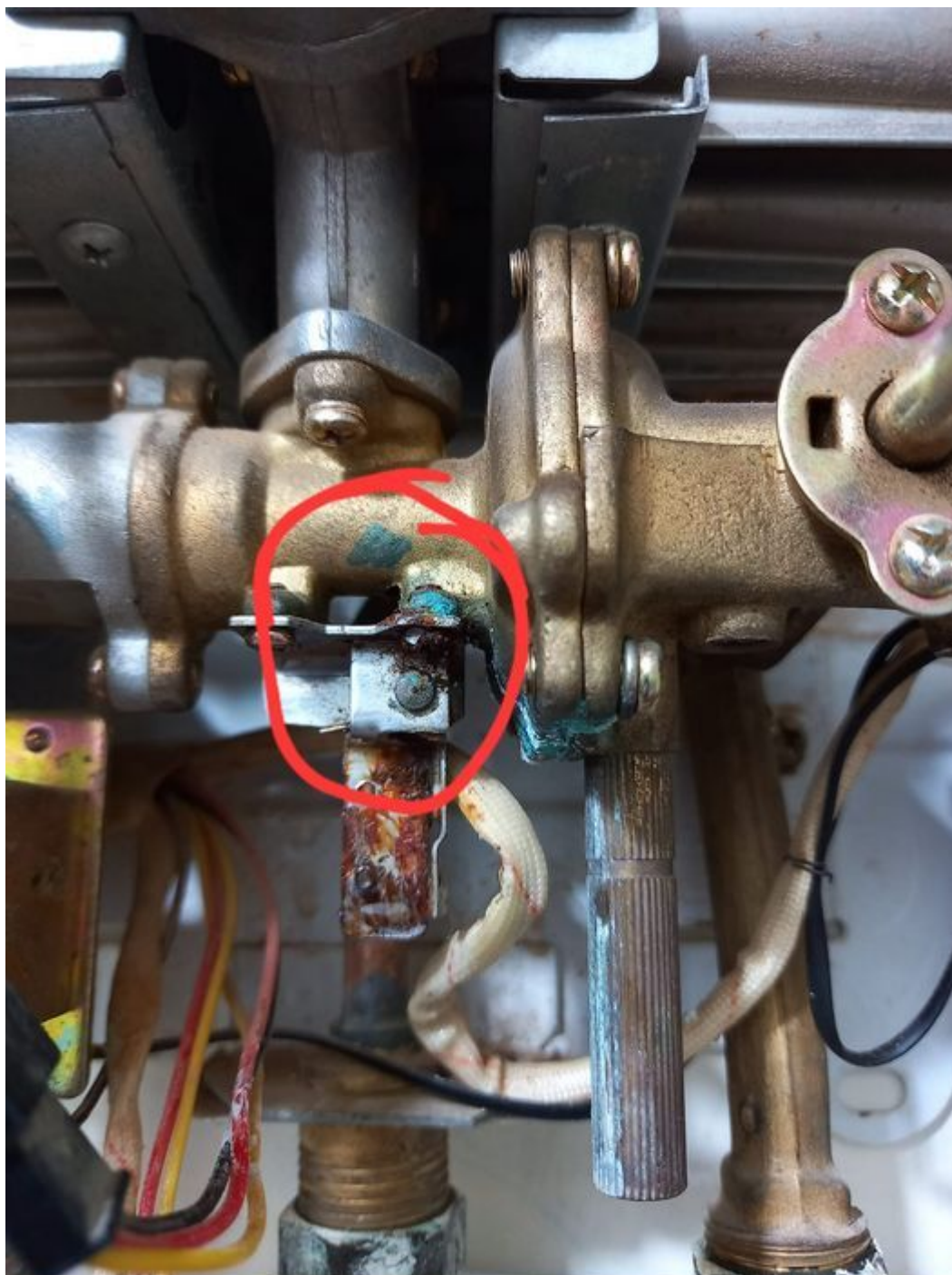


PictureS Mbsm Dot Pro : www.mbsm.pro

Core Mécanique du chauffe-eau Électronique 10 litre

Category: Technologie

written by www.mbsm.pro | 8 April 2020



Private Picture Copyright : WWW.MBSM.PRO

Core Mécanique du chauffe-eau Électronique 10 litre

**COMPRESSEUR ZEL , 200w , HDL200A,
R600a , LBP , 1/4 hp**

Category: Technologie, Tester ok
written by www.mbsm.pro | 8 April 2020



Private Picture Copyright : WWW.MBSM.PRO

Model	Motor	Disp.	Power	Motor type	Freq.	Cooling capacity	Input power	Input power (RC)	COP	COP (RC)	Run capacitor	Height	Netweight
GDL145D	Cu	4.4	1/8	RSIR/RSCR	60	145	94	87	1.55	1.67	10	161	7.3
GDL175D	Cu	5.3	1/6	RSIR/RSCR	60	175	112	106	1.56	1.65	10	161	7.3
GML140A	Al	4.9	1/6	RSIR	50	140	112	0	1.25	0	0	152	6.3
GML160A	Al	5.7	1/6	RSIR	50	160	128	0	1.25	0	0	161	6.9
GML180A	Al	6.5	1/5	RSIR	50	180	144	0	1.25	0	0	161	7.1
GML200A	Al	7	1/5	RSIR	50	200	160	0	1.25	0	0	164	7.3
GML145D	Al	4.4	1/7	RSIR/RSCR	60	145	97	92	1.5	1.57	10	164	7.1
GML175D	Al	4.9	1/6	RSIR/RSCR	60	175	118	112	1.48	1.56	10	164	7.1
GPL175D*	Cu	4.9	1/7	CSCR	60	175		97		1.8	10	161	7.6
GXL175D	Cu	4.9	1/7	RSCR	60	175		101		1.73	10	164	7.6

PictureS Mbsm Dot Pro : www.mbsm.pro

TECHNICAL CHARACTERISTICS

SCHEME COMPRESSORS

OF

ELECTRIC DIAGRAMS

ASSEMBLY

TECHNICAL SCHEMES

Model	Motor	Speed range	Displ., cm ³	Motor type	Freq. hz	Cooling Capacity, w -23.3 °C/(+7.2 °C)*	Input Power, BT		COP, w/w		Run Capacitor, µF	Height, mm	Net Weight, kg	Type of cooling, S/F
							without RC	with RC	without RC	with RC				
HDL100A	Al	-	5,7	RSCR	50	98	-	60	-	1,64	2,5	161	6,9	-
HDL100A(I)	Cu/Al	-	5,7	RSCR	50	98	-	57	-	1,72	2,5	164	7,2	-
HDL125A	Al	-	7,0	RSCR	50	123	-	72	-	1,70	2,5	164	7,2	-
HDL125A (I)	Cu/Al	-	7,0	RSCR	50	123	-	69	-	1,79	2,5	164	7,2	-
HDL140A	Al	-	8,0	RSCR	50	140	-	80	-	1,74	2,5	164	7,2	-
HDL160A	Al	-	9,2	RSCR	50	160	-	90	-	1,77	3	164	7,2	-
HDL170A	Al	-	9,5	RSCR	50	172	-	101	-	1,70	4	164	7,2	-
HDL190A	Cu/Al	-	10,5	RSCR	50	185	-	106	-	1,75	4	164	7,2	-
HDL200A	Cu/Al	-	12,0	RSCR	50	200	-	118	-	1,70	4	164	7,2	-
HDL80A	Al	-	4,9	RSCR	50	80	-	49	-	1,62	2	161	6,9	-
HML100A	Al	-	5,7	RSCR	50	98	-	71	-	1,39	2	152	6,3	-
HML125A	Al	-	7,0	RSCR	50	125	-	83	-	1,45	2	152	6,3	-
HML140A	Al	-	8,0	RSCR	50	140	-	90	-	1,56	3	152	6,3	-
HML170A	Al	-	9,5	RSCR	50	165	-	114	-	1,45	3	161	6,9	-
HML200A	Al	-	12,0	RSCR	50	200	-	138	-	1,45	4	164	7,2	-
HML80A	Al	-	4,9	RSCR	50	80	-	55	-	1,45	2	152	6,3	-
HPL100A	Cu	-	5,7	CSCR	50	100	-	51	-	1,96	2	161	7,3	-
HPL125A	Cu	-	7,0	CSCR	50	125	-	64	-	1,96	2	161	7,3	-
HPL140A	Cu	-	8,0	CSCR	50	145	-	74	-	1,95	2	161	7,3	-
HXL100A	Cu	-	5,7	RSCR	50	98	-	52	-	1,87	2	161	7,3	-
HXL125A	Cu	-	7,0	RSCR	50	123	-	65	-	1,90	2	161	7,3	-
HXL140A	Cu	-	8,0	RSCR	50	140	-	73	-	1,91	2	161	7,3	-
HXL170A	Cu	-	9,3	RSCR	50	175	-	93	-	1,88	2	161	7,3	-
HXL190A	Cu	-	10,5	RSCR	50	190	-	103	-	1,85	3	164	7,3	-
HXL190A (B)	Cu	-	12,0	RSCR	50	200	-	108	-	1,85	3	164	7,3	-
HXL50A	Cu	-	4,9	RSCR	50	53	-	31	-	1,70	1,5	164	7,3	-

PictureS Mbsm Dot Pro : www.mbsm.pro



Private Picture Copyright : WWW.MBSM.PRO

C 58708690

ZEL HDL200A 16-44
220-240V 50Hz
SUCTION >
8 269 0902610 5
ZANUSSI ELETTROMECCANICA COMPRESSOR







PictureS Mbsm Dot Pro : www.mbsm.pro

كباسات ZEL ومواصفاتها مع مقاسات الثلاجات والفریزارات المختلفة

موديل الثلاجة	الحجم بالقدم 3	الحجم باللتر	قدرة الضاغط							
			R134a			R600a				
			Model	W	HP	Model	W	HP		
LBP										
كباسات التجميد										
Domestic single door 	4	5	113	160	GML70G	72	1/12	HMM70A	70	1/12
	6	7	170	198	GML70G	72	1/10	HMM70A	70	1/10
	8	9	226	254	GML90G	94	1/8	HMM90A	90	1/8
	9	13	283	370	GML125G	125	1/6	HML125AT	130	1/6
Domestic double door 	9	12	226	340	GML140AT	148	1/5	HML140AT	140	1/5
	13	17	370	481	GML200AT	195	1/4	HML200A	200	1/4
	17	22	509	623	GTH88AA	240	1/3	HKD14AA	240	1/3
Upright and chest freezer 	4	6	113	120	GML125G	125	1/6	HML125AT	130	1/6
	6	8	198	226	GML140AT	148	1/5	HML140AT	140	1/5
	8	12	254	340	GML200AT	195	1/4	HML200A	200	1/4
	12	18	370	509	GTH88AA	240	1/3	HKD14AA	240	1/3

PictureS Mbsm Dot Pro : www.mbsm.pro

GML70G,
GML90G,
GML125G,
HMM70A,
HMM90A,
HML125AT,
GML140AT
GML200AT,
GTH88AA,
HML140AT,
HML200A,
HKD14AA,
GML125G,
GTH88AA,

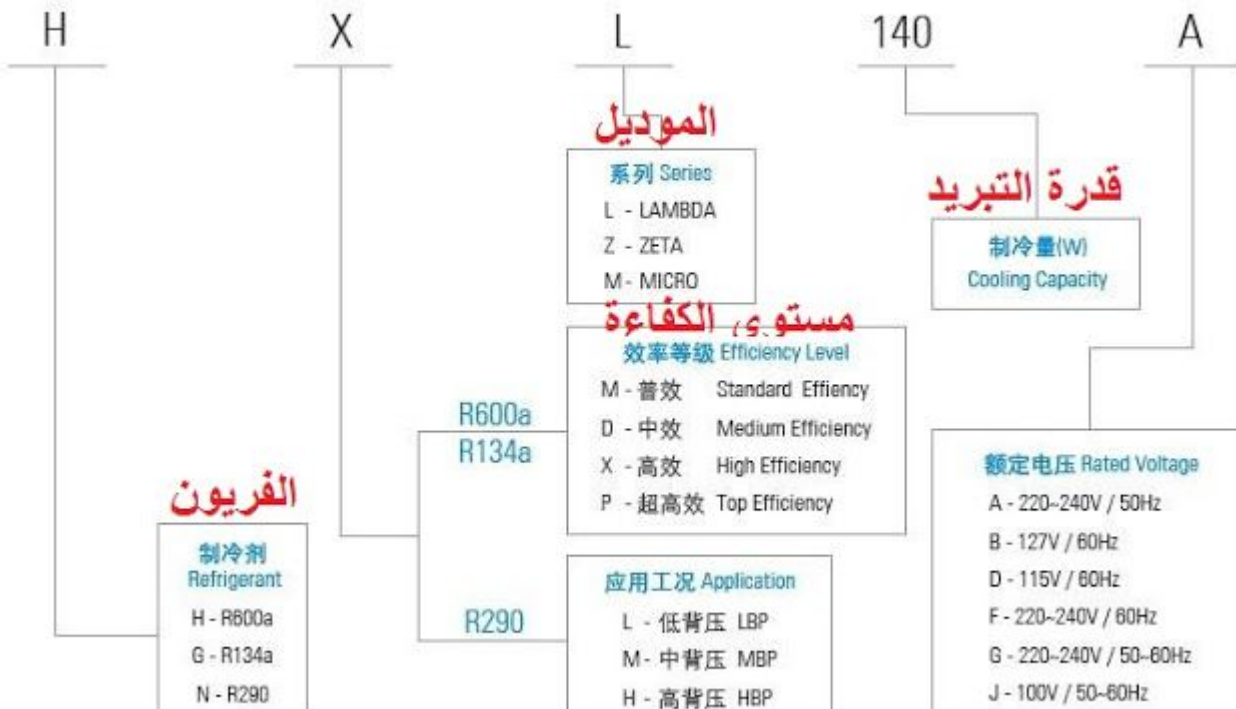
GDL145D,
GDL175D,
GML140A,
GML160A,
GML180A,
GML200A,
GML145D,
GML175D,
GPL175D*,
GXL175D,
GXL200D,

R600a**مواصفات قياسات التجميد LBP**

Model الموديل	Voltage الفولت	Hz التردد	Cooling Capacity سعة التبريد - القدرة التبريدية		
			W	HP	
HMM70A	220 - 240	50	70	0.094	1/10
HMM80A	220 - 240	50	80	0.107	1/10
HMM90A	220 - 240	50	90	0.121	1/8
HMM100A	220 - 240	50	100	0.134	1/8
HML100A	220 - 240	50	103	0.138	1/8
HML125A	220 - 240	50	121	0.162	1/6
HML125AT	220 - 240	50	130	0.174	1/6
HML140AT	220 - 240	50	140	0.188	1/6
HML155A	220 - 240	50	155	0.208	1/5
HML170AT	220 - 240	50	170	0.228	1/5
HML190A	220 - 240	50	190	0.255	1/4
HML200A	220 - 240	50	200	0.268	1/4

R134a**كباسات التجميد LBP**

Model الموديل	Voltage الفولت	Hz التردد	Cooling Capacity سعة التبريد - القدرة التبريدية		
			W	HP	
GML70G	220 - 240	50 - 60	72	0.097	1/12
GML80G	220 - 240	50 - 60	80	0.107	1/10
GML90G	220 - 240	50 - 60	94	0.126	1/8
GML110AT	220 - 240	50	113	0.151	1/7
GML125G	220 - 240	50 - 60	122	0.164	1/6
GML140G	220 - 240	50 - 60	136	0.182	1/6
GML140AT	220 - 240	50	148	0.198	1/5
GML180G	220 - 240	50 - 60	162	0.217	1/5
GML200AT	220 - 240	50	195	0.261	1/4
GTH88AA	220 - 240	50	240	0.322	1/3
GTH93AA	220 - 240	50	260	0.349	1/3
GTM93AA	220 - 240	50	280	0.375	3/8
GTM10AA	220 - 240	50	300	0.402	3/8+

PictureS Mbsm Dot Pro : www.mbsm.pro**Lambda/Zeta/Micro**PictureS Mbsm Dot Pro : www.mbsm.pro

Tau



PictureS Mbsm Dot Pro : www.mbsm.pro

كباسات ZEL ومواصفاتها مع مقاسات الثلاجات والفریزارات المختلفة

موديل الثلاجة	الحجم بالقدم 3	الحجم باللتر	قدرة الضاغط							
			R134a			R600a				
			Model	W	HP	Model	W	HP		
LBP كباسات التجميد										
Domestic single door 	4	5	113	160	GML70G	72	1/12	HMM70A	70	1/12
	6	7	170	198	GML70G	72	1/10	HMM70A	70	1/10
	8	9	226	254	GML90G	94	1/8	HMM90A	90	1/8
	9	13	283	370	GML125G	125	1/6	HML125AT	130	1/6
Domestic double door 	9	12	226	340	GML140AT	148	1/5	HML140AT	140	1/5
	13	17	370	481	GML200AT	195	1/4	HML200A	200	1/4
	17	22	509	623	GTH88AA	240	1/3	HKD14AA	240	1/3
Upright and chest freezer 	4	6	113	120	GML125G	125	1/6	HML125AT	130	1/6
	6	8	198	226	GML140AT	148	1/5	HML140AT	140	1/5
	8	12	254	340	GML200AT	195	1/4	HML200A	200	1/4
	12	18	370	509	GTH88AA	240	1/3	HKD14AA	240	1/3

PictureS Mbsm Dot Pro : www.mbsm.pro



Variable Speed Range 变频系列

R600a

型号	电机	转速范围	排气量	电机类型	制冷量	输入功率	性能系数	高度	重量	认证
Model	Motor	Speed Range	Displ.	Motor Type	Cooling Capacity	Input Power	COP	Height	Net Weight	Certification
		rpm	cm ³		w	w	w/w	mm	kg	

220-240V/50Hz

T系列变频 T Series VSC

HKD66FSK	Al	1400-4000	6.6	PMSM	45-150	26-85	Up to 1.90	163	7.1	
HKD75FSK	Al	1400-4000	7.5	PMSM	52-170	29-96	Up to 1.90	163	7.1	
HKD86FSK	Al	1400-4000	8.6	PMSM	60-190	35-105	Up to 1.90	163	7.1	
HKD93FSK	Al	1400-4000	9.3	PMSM	70-210	40-125	Up to 1.90	163	7.1	
HKD10FSK	Al	1400-4000	10.5	PMSM	83-235	49-132	Up to 1.90	163	7.1	CCC
HKD12FSK	Al	1400-4000	11.5	PMSM	95-270	51-154	Up to 1.90	163	7.1	CCC
HKD66FSK I	Cu	1400-4000	6.6	PMSM	45-150	25-82	Up to 1.95	163	8.0	
HKD75FSK I	Cu	1400-4000	7.5	PMSM	52-170	28-93	Up to 1.95	163	8.0	
HKD86FSK I	Cu	1400-4000	8.6	PMSM	60-190	32-102	Up to 1.95	163	8.0	
HKD93FSK I	Cu	1400-4000	9.3	PMSM	70-210	38-115	Up to 1.95	163	8.0	
HKD10FSK I	Cu	1400-4000	10.5	PMSM	83-235	44-123	Up to 1.95	163	8.0	CCC
HKD12FSK I	Cu	1400-4000	11.5	PMSM	95-270	50-146	Up to 1.95	163	8.0	CCC

Z系列变频 Z Series VSC

HXZ150FSM	Al	1200-4200	6.5	PMSM	42-150	23-80	Up to 1.90	145	6.9	-
HXZ170FSM	Al	1200-4200	7.0	PMSM	50-170	26-92	Up to 1.90	145	6.9	-
HXZ200FSM	Al	1200-4200	8.6	PMSM	56-200	30-103	Up to 1.90	145	6.9	-
HXZ220FSM	Al	1200-4200	9.2	PMSM	68-220	36-120	Up to 1.90	145	6.9	-
HXZ240FSM	Al	1200-4200	9.5	PMSM	75-240	39-125	Up to 1.90	145	6.9	-
HDZ150FSM	Al	1200-4200	6.5	PMSM	42-150	25-88	Up to 1.80	145	6.3	-
HDZ170FSM	Al	1200-4200	7.0	PMSM	50-170	27-98	Up to 1.80	145	6.3	-
HDZ200FSM	Al	1200-4200	8.6	PMSM	56-200	30-110	Up to 1.80	145	6.3	-
HDZ220FSM	Al	1200-4200	9.2	PMSM	68-220	40-132	Up to 1.80	145	6.3	-

Picture5 Mbsm Dot Pro : www.mbsm.pro

Mbsm_dot_pro_private_PDF_catalog_zelTélécharger
COMPRESSEUR ZEL HML170A AU R600A LBP 1/6HP 9.5CM3



C 66817170

ZEL HDL170A 18.32
220-240V 50Hz
SUCTION >
R 600a
B-A13 0008904 2
CE
RoHS
CCC
AP34710



REDMI NOTE 9
AI QUAD CAMERA

COMPRESOR ACC GL80AN R134 1/5, Cubigel Compressors LBP , Hermetic, Freezing, Tb/Cooling/hmbp

Category: Technologie, Tester ok
written by www.mbsm.pro | 8 April 2020





PictureS Mbsm Dot Pro : www.mbsm.pro

Type: Hermetic piston compressors
Producer: ACC

Series: HMBP/tb

Model: GL80AN

General data

Refrigerant: R134a
Discharge element: C
Cooling: S
Maximum ambient temperature [°C]: 43

Compressor's data

Cylinder capacity [cm³]: 8,1
Displacement [m³/h]: 1,4
Weight [kg]: 10,6
Oil charge [cm³]: 445
Oil type: ISO VG 19 ESTER

Engine's data

Engine type: RSIR
Power [KM]: 1/5
Starting element: LST
Power supply: 220V 50Hz
Voltage range: 170-242
Locked rotor current [A]: 18
Running winding resistance (25°C) [Ω]: 5,81
Starting winding resistance (25°C) [Ω]: 11,01

Electrical data

Relays: 3003
Shielding element: MRP321LZ, T0683, AF11FI
Starting capacitor volume [μF]:

Connections

	milimeters	inches
Suction tube:	6,5	
Service tube:	6,5	
Discharge tube:	4,9	

GL80AN (1)Download

mbsm.pro , Compresseur Aspera , Embraco ,NEK2168GK , R404a/R507 , LBP ,3/4 HP,nominal output: 707 W

Category: Technologie,Tester ok
written by www.mbsm.pro | 8 April 2020



Picture5 Mbsm Dot Pro : www.mbsm.pro

EMBRACO is a company specialized in cooling solutions and world leader in the hermetic compressor market. Our mission: provide innovative solutions for a better quality of life, always attentive to technological excellence and sustainability. Technological leadership, operational excellence and sustainability are some of the pillars which ensure the EMBRACO differential over other companies in the world market. Its products are now considered the favorite leading home appliance manufacturers by major automakers and are spotlighted by manufacturers of commercial refrigeration equipment. With global operations and production capacity exceeding 34 million units a year, the company offers solutions that are differentiated for their innovation and low energy consumption. Its 11.500 employees work in factories and offices located in Brazil

(headquarters), China, Italy, Slovakia, Mexico, the United States and Russia. Energy efficiency is constantly sought in the processes, products and relationships with the communities where it operates. Our company is the absolute leader in this segment, being able to offer products that meet the most restrictive international standards regarding energy consumption. As a worldwide leader, EMBRACO tries to anticipate market changes, and in doing so, our company is in a state of permanent transformation. We continuously assess our processes in order to maintain our leadership within the industry and promote growth, without forgetting the pillars of our organization.

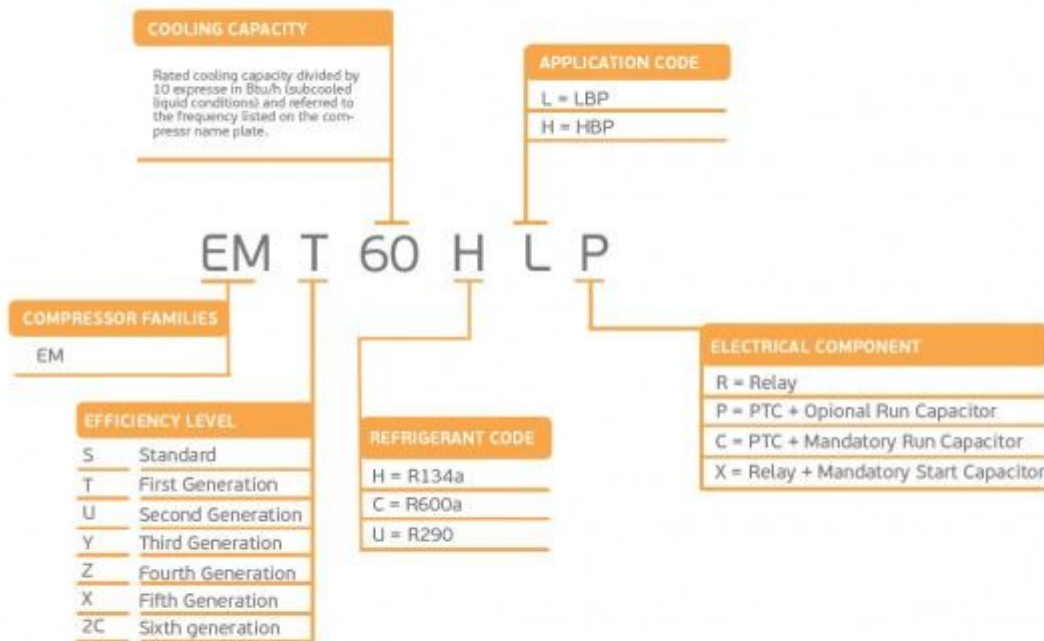
Compressor ASPERA NEK2168GK | NEK 2168 GK

Refrigerant	R404/R507
Working range[stC] LBP	-40 to -10
Nominal capacity [W] (evaporating temperature -23,3C, Condensing temperatur +54,4C)	688
Power supply	220-240V 50Hz
Engine type	CSIR
Displacement [cm³]	14,28
Weight [kg]	11,6
Evaporating temperature +55 C	

Evaporating Temperature	Cooling Capacity +/-5%	Power Consumption +/-5%	Current Consumption +/-5%	Gas Flow Rate +/-5%	Efficiency +/-7%			
°C	(kcal/h)	(W)	(Btu/h)	(W)	(A)	(kg/h)	(kcal/Wh)	(W/W)
-40	226	263	897	370	3,46	6,01	0,61	0,71
-35	309	359	1.224	435	3,57	8,22	0,71	0,82
-30	413	481	1.640	506	3,73	11,06	0,82	0,95
-25	541	629	2.146	584	3,95	14,52	0,93	1,08
-20	691	803	2.740	668	4,21	18,64	1,03	1,20
-15	863	1.004	3.424	759	4,53	23,43	1,14	1,32
-10	1.058	1.230	4.197	856	4,90	28,92	1,24	1,44

Refrigerant: R404A, R507

		R404A / R507							
		LBP	VOLT. FREQ.	COOL. CAP. [W]	DISPL. [cc]	MBP	VOLT. FREQ.	COOL. CAP. [W]	DISPL. [cc]
NE NEK	NEK2117GK	A	125	4,51	NEK6144GK	A	550	4,51	
	NEK2121GK	A	151	5,44	NEK6165GK	A	743	6,20	
	NEK2125GK	A	182	6,20	NEK6181GK	A	841	7,28	
	NEK2130GK	A	213	7,37	NEK6210GK	A / N	1.005	8,77	
	NEK2134GK	A / N	248	8,77	NEK6213GK	A	1.337	12,11	
	NEK2150GK	A	329	12,11	NEK6217GK	A / N	1.164	14,28	
	NEK2168GK	A	378	14,28					
	NEK2172GK	C	819	16,80					



embraco **NEK**



R404A

LBP

PictureS Mbsm Dot Pro : www.mbsm.pro

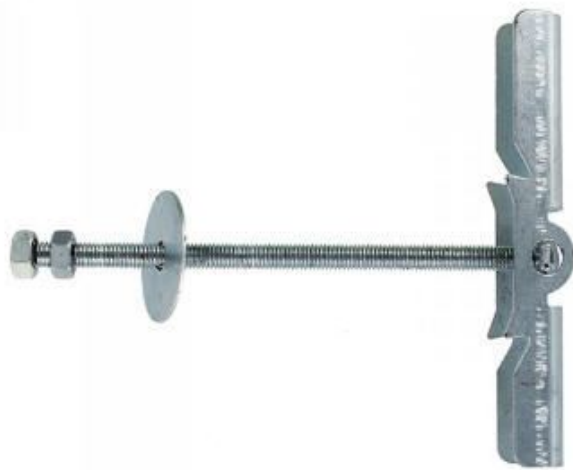


Picture5 Mbsm Dot Pro : www.mbsm.pro

mbsm.pro , Compresseur Aspera , Embraco NEK2168GK , R404A , LBP ,3/4 HP
Compresseur hermetique de Aspera – Embraco NEK2168GK – R404A
3/4 HP
220-240V 50 Hz
Cylindrée = 14.3 CM3
APPLICATIONS = LBP
Moteur type: CSR

**Mbsm.pro, cheville papillon pour
plafond , ou La cheville ou l'ancrage
sert à fixer un objet sur une surface**

Category: Technologie,Tester ok
written by www.mbsm.pro | 8 April 2020



PictureS Mbsm Dot Pro : www.mbsm.pro

Les ancrages sont beaucoup utilisés en construction, mais on en utilise aussi régulièrement pour des choses simples comme faire la pose d'un portrait sur un mur.

L'ancrage est beaucoup utilisé pour visser dans un mur de gypse, car celui-ci n'est pas assez rigide pour maintenir un clou ou une vis fermement. Il faut donc utiliser un moyen afin pouvoir visser quelque chose solidement, malgré la fragilité du revêtement de mur.

Mbsm.pro , Compressor ESC 8.5, R134a, Necchi (530591) , 1/5 Hp ,159 w

Category: Solutions, Tester ok
written by Jamila | 8 April 2020



PictureS Mbsm Dot Pro : www.mbsm.pro

Mbsm.pro , Compressor ESC 8.5, R134a, Necchi (530591) , 1/5 Hp ,159 w

	Motore	cm ³	Volt	Watt -10°C	Watt -30°C	
RIB5150	A9EV – R22 – 3/8 – LBP	CSR	9,29	220	642	
RIB5160	A11EV – R22 – 1/2 Hp – LBP	CSR	11,11	220	781	
RIB5350	A13EV – R22 – 5/8 Hp – LBP	CSR	13,35	220	967	
RIB5450	N17EV – R22 – 3/4 Hp – LBP	CSR	17,52	220	1221	
RIB5550	N21EV – R22 -1- Hp LBP	CSR	20,68	220	1464	
RIB5650	N23EV – R22 – 1,2 Hp – LBP	CSR	23,18	230	1616	
RIB7104	NB4 COMPRESS. R12 24V. FRAMEC 1/8 =					
RIB7108	NB8 COMPRESS. R12 24V.FRAMEC 175w.=					
RIB7113	NB13HP COMPRESS.R12 24V.FRAMEC 1/3=					
RIBB010	ETR 3 – R134A – 1/12 Hp – LBP	RSIR	3,00	220	127	
RIBB020	ETR 3,5 HP 1/10 R134A – LBP	RSIR	3,50	220	156	
RIBB030	ETR 4 HP 1/8 R134A – LBP	RSIR	4,10	220	179	
RIBB040	ETR 5 – R134a – HP 1/6 – LBP	RSIR	5,12	220	231	
RIBB050	ETR5,5 – R134a – 1/6 Hp – LBP	RSIR	5,55	220	257	
RIBB080	ESC5 – R134a – 1/6 Hp – LBP	RSIR	5,12	220	222	
RIBB100	ESC7 – R134a – 1/5 Hp – LBP	RSIR	7,00	220	307	
RIBB110	ESC8 – R134a – 1/5 Hp – LBP	RSIR	7,75	220	358	
RIBB130	ESC9 – R134a – 1/4 Hp – LBP	RSIR	9,07	220	424	
RIBB140	ESC11 – R134a – 1/3 Hp – LBP	RSIR	10,63	220	501	
RIBB200	ESC4H – R134a – 1/8 Hp – LBP	RSIR	4,10	220	177	
RIBB400	ESR 7 – R134a – 1/5 Hp – LBP	RSIR	7,00	220	307	
RIBB410	ESR 8 – R134a – 1/5 Hp – LBP	RSIR	7,75	220	358	
RIBB430	ESR 9 – R134a – 1/4 Hp – LBP	RSIR	9,07	220	424	
RIBB440	ESR11 – R134a – 1/3 Hp – LBP	RSIR	10,63	220	501	
RIBE040	TN17EV – R404 – 3/4 Hp – LBP	CSR	17,52	220		565
RIBE050	TN21EV – R404 – 1 Hp – LBP	CSR	20,68	220		644
RIBE060	TN23EV – R404 – 1,2 Hp – LBP	CSR	23,18	220		726
RIBT999	COMPRESSORE ELECTROLUX DESCR.BOLLA					



neue Type	Verdichter Type		Kälte- mittel	Bereich	1)Betrieb	2)Leistungs- aufnahme Watt	3)Strom- aufnahme A	Öl- füllung cm ³	Bestell-Nr.
		Vorläufer Type							
mit Esterölfüllung									
*ETR 3		-	R134a	LBP	K	68	0,55	185	*230.051
*ETR 3,5		-	R134a	LBP	K	81	0,58	185	*230.053
*ETR 4		-	R134a	LBP	K	89	0,64	185	*230.055
*ETR 5		-	R134a	LBP	K	109	0,76	185	*230.057
*ETR 5,5		-	R134a	LBP	K	118	0,80	185	*230.059
*ESR 7	ESC 7		R134a	LBP	K	127	0,83	220	*230.073
*ESR 8	ESC 8		R134a	LBP	K	149	1,00	220	*230.075
*ESR 8,5	ESC 8,5		R134a	LBP	K	159	1,07	220	*230.077
*ESR 9	ESC 9		R134a	LBP	K	177	1,20	220	*230.079
*ESR 11	ESC 11		R134a	LBP	K	215	1,42	220	*230.081
ETR 4H	ES(C)R4H		R134a	HBP	K	187	1,13	185	-
ETR 5H	ES(C)R5H		R134a	HBP	K	231	1,30	185	-
ESR 7H	ESC 7H		R134a	HBP	K	288	1,61	220	-
ESR 9H	ESC 9H		R134a	HBP	K	396	2,31	220	-
ESR 11H	ESC 11H		R134a	HBP	K	472	2,64	220	-
TA 13 EV		-	R404 A	LBP	K/E	463	2,15	950	230.096
TN 17 EV		-	R404 A	LBP	K/E	627	2,93	950	230.097
TN 21 EV		-	R404 A	LBP	K/E	727	3,61	950	230.099