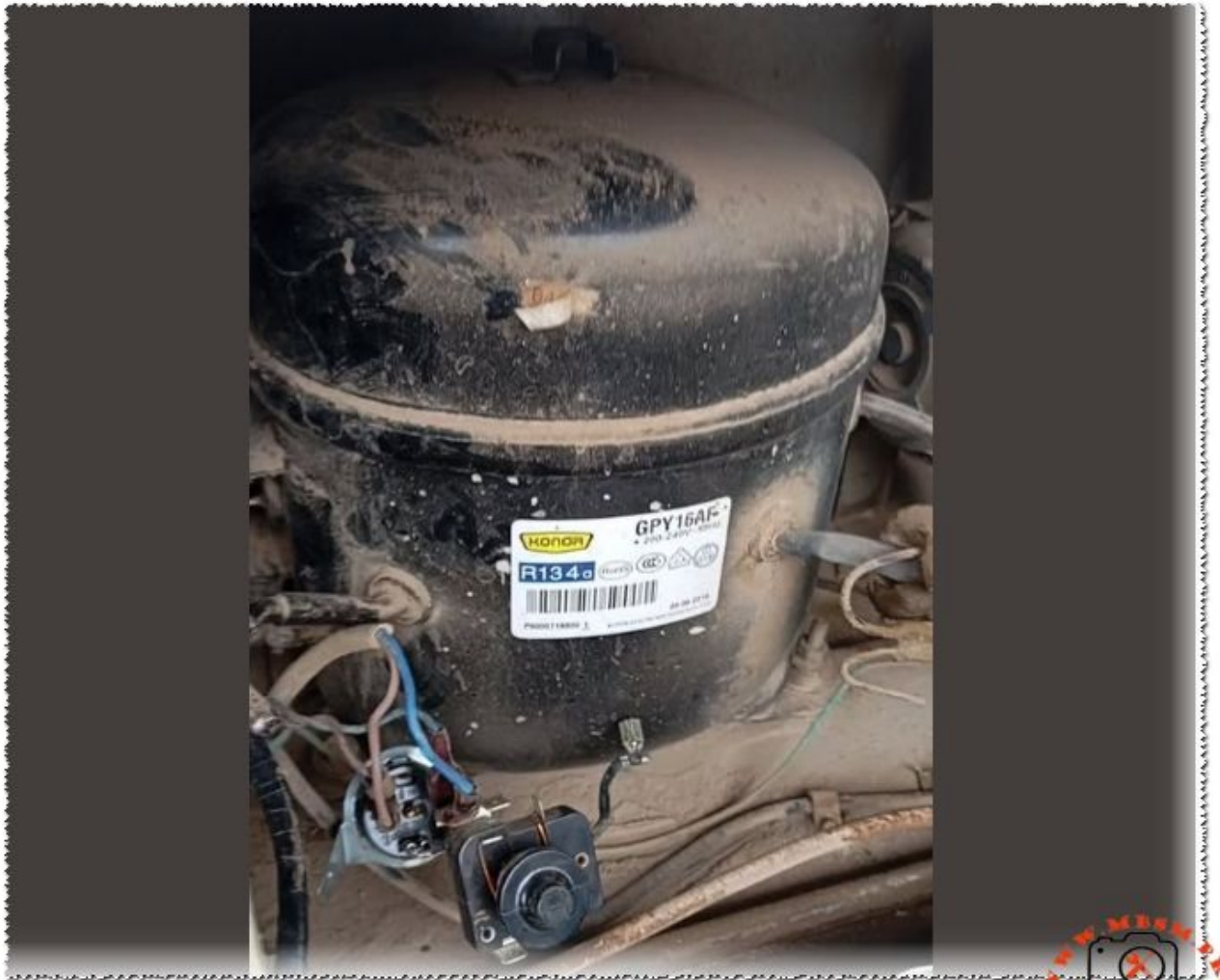


Compressor, Konor, GPY16AF, 1/2 HP, R134a, LBP

Category: Refrigeration

written by www.mbsm.pro | 18 January 2026



Private Picture Copyright : WWW.MBSM.PRO

The Konor GPY16AF is a robust hermetic reciprocating compressor engineered for low back pressure applications using R134a refrigerant. With a displacement of 16.2 cm³, this 1/2 HP unit is a staple in commercial freezers and large refrigerators. This guide provides detailed technical data, wiring diagrams, and professional cross-reference options for field technicians.

Copeland ZB50KCE Scroll Compressor

Category: Refrigeration

written by www.mbsm.pro | 18 January 2026



Private Picture Copyright : WWW.MBSM.PRO

copeland zb50kce scroll compressor 7 hp 11.9 kw polyester oil nameplate data
Mbsmgroup mbsmpro.com