

The refrigerator has a problem, it works for a minute and then shuts off

Category: Refrigeration

written by www.mbsm.pro | 12 April 2026



Private Picture Copyright : WWW.MBSM.PRO

Our technical investigation revealed a dual issue. The system was suffering from a **restricted filter drier**, causing a blockage that choked the cooling cycle. This strain had also compromised the motor's starting components.

Technical Specifications

Feature	Specification
Model	S65CZ1
Brand	Panasonic
Refrigerant	R134a
Power Supply	220-240V / 50Hz
Cooling Capacity	Approximately 165W (at ASHRAE conditions)
Horsepower	1/5 HP
Displacement	6.5 cm ³
Motor Type	RSIR (Resistive Start-Inductive Run)



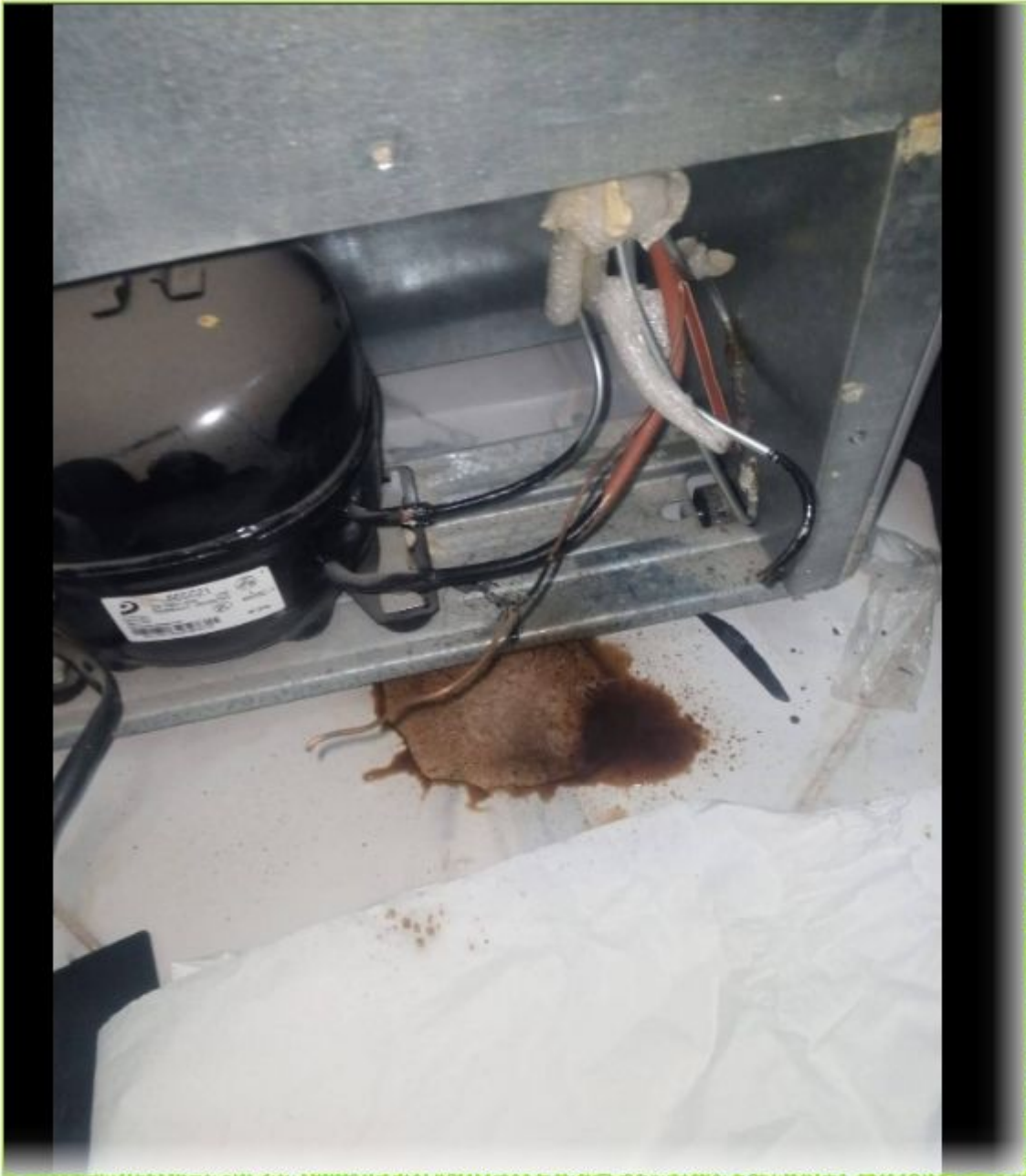
Private Picture Copyright : WWW.MBSM.PRO



Private Picture Copyright : WWW.MBSM.PRO



Private Picture Copyright : WWW.MBSM.PRO



Private Picture Copyright : WWW.MBSM.PRO



Private Picture Copyright : WWW.MBSM.PRO

Our intervention included:

- **System Clearing:** Replacing the clogged filter to allow the refrigerant to flow freely once again.
- **Electrical Upgrade:** Installing a brand-new high-quality "Starting Kit" (Relay/Overload) to ensure the compressor starts smoothly every time.
- **The Mbsmpro Promise:** We don't just fix; we provide peace of mind. This repair is backed by a **full 6-month warranty**.