

REFRIGERATION APPLICATION CHART (R12 AND R22)

Category: Technologie, Tester ok
 written by www.mbsm.pro | 17 May 2020

REFRIGERATION APPLICATION CHART (R-12 AND R-22)*

H.P.	REF.	NOTE	NORMAL EVAPORTING TEMPERATURE DEGREES F							
			-10 to +5		+5 to +20		+20 to +35		+35 to +50	
1/20	R12	S-F	16 Ft.	TC-26	10 Ft.	TC-26				
1/12	R12	S-F	12 Ft.	TC-26	12 Ft.	TC-31				
1/9	R12	S	12 Ft.	TC-26	12 Ft.	TC-31				
1/9	R12	S	10 Ft.	TC-26	10 Ft.	TC-31				
1/8	R12	S-F	10 Ft.	TC-26	10 Ft.	TC-31				
1/6	R12	S	12 Ft.	TC-31	12 Ft.	TC-36	8 Ft.	TC-36	10 Ft.	TC-42
1/6	R12	F	10 Ft.	TC-31	10 Ft.	TC-36				
1/5	R12	S	10 Ft.	TC-31	10 Ft.	TC-36	7-1/2 Ft.	TC-42	7-1/2 Ft.	TC-49
1/5	R12	F	8 Ft.	TC-31	8 Ft.	TC-36	10 Ft.	TC-42	6 Ft.	TC-42
1/4	R22	S-F	12 Ft.	TC-36	6 Ft.	TC-36	8-1/2 Ft.	TC-42	6 Ft.	TC-49
1/4	R12	F	10 Ft.	TC-36	6 Ft.	TC-36	8 Ft.	TC-42	6 Ft.	TC-49
1/3	R22	F	10 Ft.	TC-36	6 Ft.	TC-36	11 Ft.	TC-49		
1/3	R12	F	12 Ft.	TC-42	6 Ft.	TC-42	9 Ft.	TC-49	6 Ft.	TC-54
1/2	R22	F	6 Ft.	TC-36	9 Ft.	TC-42	7-1/2 Ft.	TC-54	10 Ft.	TC-64
1/2	R12	F	11 Ft.	TC-54	9 Ft.	TC-49				
3/4	R22	F	11 Ft.	TC-54	9 Ft.	TC-54				
3/4	R12	F	7-1/2 Ft.	TC-54	12 Ft.	TC-70	1 Ft.	TC-80		
1	R22	F	10 Ft.	TC-64	12 Ft.	TC-70				
1	R12	F	10 Ft.	TC-70	11 Ft.	TC-54	7-1/2 Ft.	TC-54 (2 pcs)		
1-1/2	R22	F	7-1/2 Ft.	TC-54 (2 pcs)	7-1/2 Ft.	TC-54 (2 pcs)	8 Ft.	TC-64 (2 pcs)		
1-1/2	R12	F			9 Ft.	TC-64 (2 pcs)	10 Ft.	TC-80 (2 pcs)		
2	R22	F			10 Ft.	TC-70 (2 pcs)	9 Ft.	TC-75 (2 pcs)		
2	R12	F	10 Ft.	TC-70 (2 pcs)	9 Ft.	TC-75 (2 pcs)	10 Ft.	TC-85 (2 pcs)		
3	R22	F			10 Ft.	TC-70 (3 pcs)	9 Ft.	TC-75 (3 pcs)		
3	R12	F	10 Ft.	TC-70 (2 pcs)	8 Ft.	TC-64 (4 pcs)	10 Ft.	TC-80 (4 pcs)		
4	R22	F			10 Ft.	TC-70 (4 pcs)	9 Ft.	TC-75 (4 pcs)		
4	R12	F			10 Ft.	TC-70 (5 pcs)	9 Ft.	TC-75 (5 pcs)		
5	R12	F			10 Ft.	TC-80 (5 pcs)	9 Ft.	TC-85 (5 pcs)		

NOTE: Condenser Type: S = Static, F = FAN

*R-134a - It is suggested to add 10% to length.

Private Picture Copyright : WWW.MBSM.PRO

REFRIGERATION APPLICATION CHART (R12 AND R22)

REFRIGERATION APPLICATION CHART (R-12 AND R-22)*

H.P.	REF.	NOTE	NORMAL EVAPORTING TEMPERATURE DEGREES F							
			-10 to +5		+5 to +20		+20 to +35		+35 to +50	
1/20	R12	S-F	16 Ft.	TC-26	10 Ft.	TC-26				
1/12	R12	S-F	12 Ft.	TC-26	12 Ft.	TC-31				
1/9	R12	S	12 Ft.	TC-26	12 Ft.	TC-31				
1/9	R12	S	10 Ft.	TC-26	10 Ft.	TC-31				
1/8	R12	S-F	10 Ft.	TC-26	10 Ft.	TC-31				
1/6	R12	S	12 Ft.	TC-31	12 Ft.	TC-36	8 Ft.	TC-36	10 Ft.	TC-42
1/6	R12	F	10 Ft.	TC-31	10 Ft.	TC-36				
1/5	R12	S	10 Ft.	TC-31	10 Ft.	TC-36	7-1/2 Ft.	TC-42	7-1/2 Ft.	TC-49
1/5	R12	F	8 Ft.	TC-31	8 Ft.	TC-36	10 Ft.	TC-42	6 Ft.	TC-42
1/4	R22	S-F	12 Ft.	TC-36	6 Ft.	TC-36	8-1/2 Ft.	TC-42	6 Ft.	TC-49
1/4	R12	F	10 Ft.	TC-36	6 Ft.	TC-36	8 Ft.	TC-42	6 Ft.	TC-49
1/3	R22	F	10 Ft.	TC-36	6 Ft.	TC-36	11 Ft.	TC-49		
1/3	R12	F	12 Ft.	TC-42	6 Ft.	TC-42	9 Ft.	TC-49	6 Ft.	TC-54
1/2	R22	F	6 Ft.	TC-36	9 Ft.	TC-42	7-1/2 Ft.	TC-54	10 Ft.	TC-64
1/2	R12	F	11 Ft.	TC-54	9 Ft.	TC-49				
3/4	R22	F	11 Ft.	TC-54	9 Ft.	TC-54				
3/4	R12	F	7-1/2 Ft.	TC-54	12 Ft.	TC-70	1 Ft.	TC-80		
1	R22	F	10 Ft.	TC-64	12 Ft.	TC-70				
1	R12	F	10 Ft.	TC-70	11 Ft.	TC-54	7-1/2 Ft.	TC-54 (2 pcs)		
1-1/2	R22	F	7-1/2 Ft.	TC-54 (2 pcs)	7-1/2 Ft.	TC-54 (2 pcs)	8 Ft.	TC-64 (2 pcs)		
1-1/2	R12	F			9 Ft.	TC-64 (2 pcs)	10 Ft.	TC-80 (2 pcs)		
2	R22	F			10 Ft.	TC-70 (2 pcs)	9 Ft.	TC-75 (2 pcs)		
2	R12	F	10 Ft.	TC-70 (2 pcs)	9 Ft.	TC-75 (2 pcs)	10 Ft.	TC-85 (2 pcs)		
3	R22	F			10 Ft.	TC-70 (3 pcs)	9 Ft.	TC-75 (3 pcs)		
3	R12	F	10 Ft.	TC-70 (2 pcs)	8 Ft.	TC-64 (4 pcs)	10 Ft.	TC-80 (4 pcs)		
4	R22	F			10 Ft.	TC-70 (4 pcs)	9 Ft.	TC-75 (4 pcs)		
4	R12	F			10 Ft.	TC-70 (5 pcs)	9 Ft.	TC-75 (5 pcs)		
5	R12	F			10 Ft.	TC-80 (5 pcs)	9 Ft.	TC-85 (5 pcs)		

NOTE: Condenser Type: S = Static, F = FAN

*R-134a – It is suggested to add 10% to length.

Private Picture Copyright : WWW.MBSM.PRO

Compresseur, d'entreposage au froid,
de congélateur , Sc12g , Secop
, Certification CE , 1/3 puissance , en
chevaux , de mini type réfrigérateur
, R134 , Danfos

Category: Technologie, Tester ok
written by www.mbsm.pro | 17 May 2020

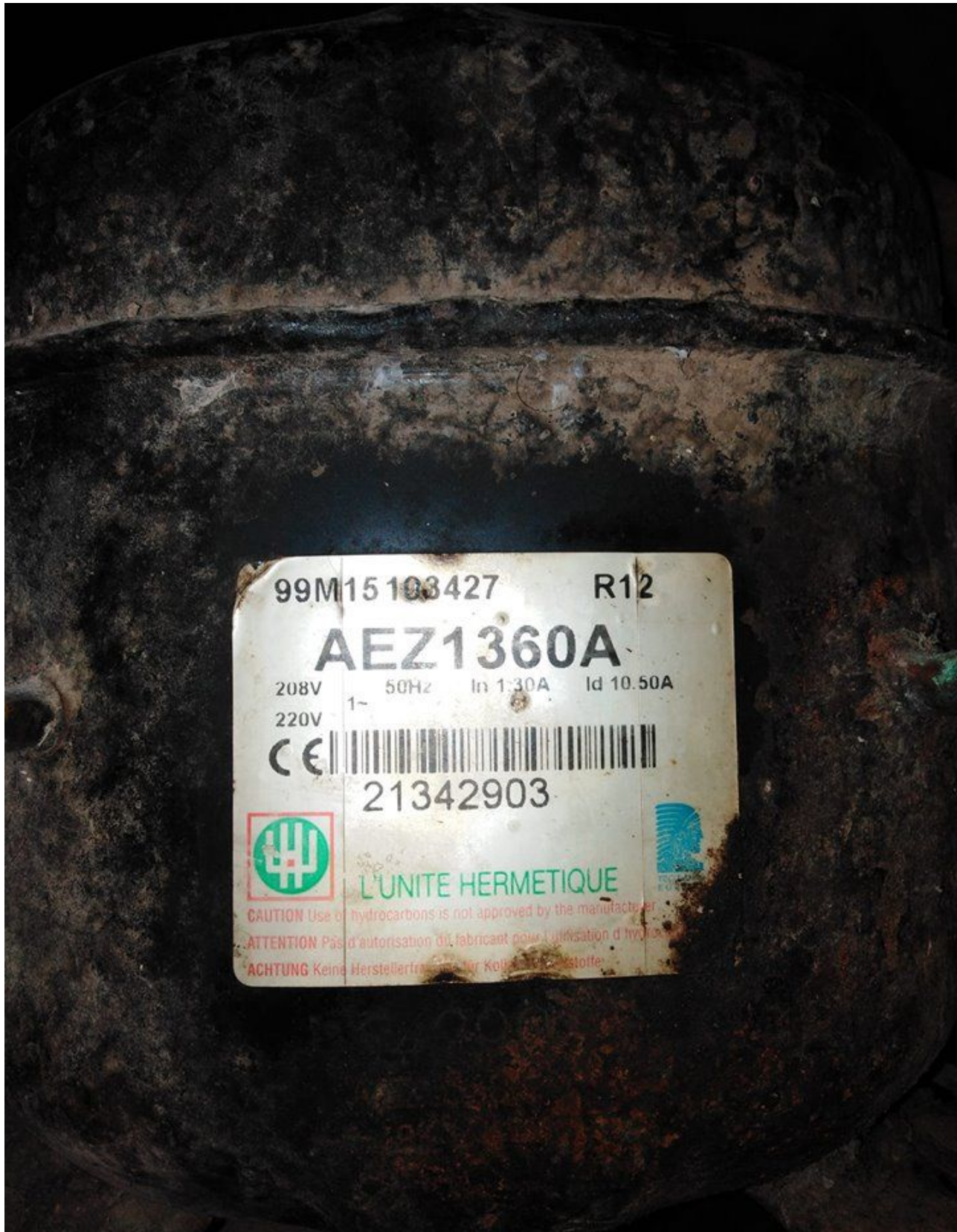
Non	Modèle	HP	La température	L'électricité	Réfrigérant
1	SC10C	1/3	LBP	220~240V/50HZ	R22
2	SC12C	3/8	LBP	220~240V/50HZ	R22
3	SC15CM	1/2	LBP	220~240V/50HZ	R22
4	SC18CM	5/8	LBP	220~240V/50HZ	R22
5	SC10D	3/8	MBP	220~240V/50HZ	R22
6	SC12D	1/2	MBP	220~240V/50HZ	R22
7	SC15D	5/8	MBP	220~240V/50HZ	R22
8	SC10G	5/16	MBP	220~240V/50HZ	R22
9	SC12G	1/3	MBP	220~240V/50HZ	R134A
10	SC15G	3/8	MBP	220~240V/50HZ	R134A
11	SC18G	1/2	MBP	220~240V/50HZ	R134A
12	SC21G	5/8	MBP	220~240V/50HZ	R134A
13	SC10CL	1/3	LBP	220~240V/50HZ	R404a
14	SC12CL	3/8	LBP	220~240V/50HZ	R404a
15	SC15CL	1/2	LBP	220~240V/50HZ	R404a
16	SC18CL	5/8	LBP	220~240V/50HZ	R404a
17	SC21CL	7/8	LBP	220~240V/50HZ	R404a

Private Picture : www.MBSM.PRO

Compresseur, d'entreposage au froid, de congélateur , Sc12g , Secop , Certification CE , 1/3 puissance , en chevaux , de mini type réfrigérateur , de R134 Danfos

www.mbsm.pro, AEZ1360A, Kirby, Tecumseh, Compressors , low back, pressure, models, 240v/50HT , 1PH , 1/5Hp , Gaz 12A

Category: Solutions,Technologie,Tester ok
written by www.mbsm.pro | 17 May 2020



PictureS Mbsm Dot Pro : www.mbsm.pro

Points forts : Compresseur aez1360a pour réfrigérateur fagor FAGOR
MA-10CA562COMP-QZQAZ

www.mbsm.pro , Original New, ASD53K,
Original New 1/6HP, R134a, LBP,
Wanbao, Refrigerator, compressor,
China, R134A, 220V/50Hz, 1PH, 144W,
Huaguang, Refrigerator Reciprocating

Category: Solutions,Technologie,Tester ok
written by Jamila | 17 May 2020




ASD53K
RoHS
 HUAGUANG
 220~240V~50Hz 1PH
 THERMALLY PROTECTED R134a
 SUCTION ↑ GUANGZHOU REFRIGERATION CO.,LTD.

 A016100207F1475

Picture5 Mbsm Dot Pro : www.mbsm.pro

www.mbsm.pro , Original New, ASD53K, Original New 1/6HP, R134a, LBP, Wanbao, Refrigerator, compressor,China, R134A, 220V/50Hz, 1PH, 144W, Huaguang, Refrigerator Reciprocating

www.mbsm.pro , Cold ,refrigeration ,compressor 1/4 hp, QD76HG ,HM Series , R134a ,HBP

Category: Solutions,Tester ok
written by www.mbsm.pro | 17 May 2020



Picture5 Mbsm Dot Pro : www.mbsm.pro

www.mbsm.pro , Cold ,refrigeration ,compressor 1/4 hp, QD76HG ,HM Series , R134a

Mbsm.pro , Compressor ESC 8.5, R134a, Necchi (530591) , 1/5 Hp ,159 w

Category: Solutions,Tester ok
written by Jamila | 17 May 2020



PictureS Mbsm Dot Pro : www.mbsm.pro

Mbsm.pro , Compressor ESC 8.5, R134a, Necchi (530591) , 1/5 Hp ,159 w

	Motore	cm ³	Volt	Watt -10°C	Watt -30°C	
RIB5150	A9EV – R22 – 3/8 – LBP	CSR	9,29	220	642	
RIB5160	A11EV – R22 – 1/2 Hp – LBP	CSR	11,11	220	781	
RIB5350	A13EV – R22 – 5/8 Hp – LBP	CSR	13,35	220	967	
RIB5450	N17EV – R22 – 3/4 Hp – LBP	CSR	17,52	220	1221	
RIB5550	N21EV – R22 -1- Hp LBP	CSR	20,68	220	1464	
RIB5650	N23EV – R22 – 1,2 Hp – LBP	CSR	23,18	230	1616	
RIB7104	NB4 COMPRESS. R12 24V. FRAMEC 1/8 =					
RIB7108	NB8 COMPRESS. R12 24V.FRAMEC 175w.=					
RIB7113	NB13HP COMPRESS.R12 24V.FRAMEC 1/3=					
RIBB010	ETR 3 – R134A – 1/12 Hp – LBP	RSIR	3,00	220	127	
RIBB020	ETR 3,5 HP 1/10 R134A – LBP	RSIR	3,50	220	156	
RIBB030	ETR 4 HP 1/8 R134A – LBP	RSIR	4,10	220	179	
RIBB040	ETR 5 – R134a – HP 1/6 – LBP	RSIR	5,12	220	231	
RIBB050	ETR5,5 – R134a – 1/6 Hp – LBP	RSIR	5,55	220	257	
RIBB080	ESC5 – R134a – 1/6 Hp – LBP	RSIR	5,12	220	222	
RIBB100	ESC7 – R134a – 1/5 Hp – LBP	RSIR	7,00	220	307	
RIBB110	ESC8 – R134a – 1/5 Hp – LBP	RSIR	7,75	220	358	
RIBB130	ESC9 – R134a – 1/4 Hp – LBP	RSIR	9,07	220	424	
RIBB140	ESC11 – R134a – 1/3 Hp – LBP	RSIR	10,63	220	501	
RIBB200	ESC4H – R134a – 1/8 Hp – LBP	RSIR	4,10	220	177	
RIBB400	ESR 7 – R134a – 1/5 Hp – LBP	RSIR	7,00	220	307	
RIBB410	ESR 8 – R134a – 1/5 Hp – LBP	RSIR	7,75	220	358	
RIBB430	ESR 9 – R134a – 1/4 Hp – LBP	RSIR	9,07	220	424	
RIBB440	ESR11 – R134a – 1/3 Hp – LBP	RSIR	10,63	220	501	
RIBE040	TN17EV – R404 – 3/4 Hp – LBP	CSR	17,52	220		565
RIBE050	TN21EV – R404 – 1 Hp – LBP	CSR	20,68	220		644
RIBE060	TN23EV – R404 – 1,2 Hp – LBP	CSR	23,18	220		726
RIBT999	COMPRESSORE ELECTROLUX DESCR.BOLLA					



neue Type	Verdichter Type		Kälte- mittel	Bereich	Betrieb	Leistungsaufnahme Watt	Strom- aufnahme A	Öl- füllung cm ³	Bestell-Nr.
	Vorläufer Type								
mit Esterölfüllung									
*ETR 3	-	-	R134a	LBP	K	68	0,55	185	*230.051
*ETR 3,5	-	-	R134a	LBP	K	81	0,58	185	*230.053
*ETR 4	-	-	R134a	LBP	K	89	0,64	185	*230.055
*ETR 5	-	-	R134a	LBP	K	109	0,76	185	*230.057
*ETR 5,5	-	-	R134a	LBP	K	118	0,80	185	*230.059
*ESR 7	ESC 7	-	R134a	LBP	K	127	0,83	220	*230.073
*ESR 8	ESC 8	-	R134a	LBP	K	149	1,00	220	*230.075
*ESR 8,5	ESC 8,5	-	R134a	LBP	K	159	1,07	220	*230.077
*ESR 9	ESC 9	-	R134a	LBP	K	177	1,20	220	*230.079
*ESR 11	ESC 11	-	R134a	LBP	K	215	1,42	220	*230.081
ETR 4H	ES(C)R4H	-	R134a	HBP	K	187	1,13	185	-
ETR 5H	ES(C)R5H	-	R134a	HBP	K	231	1,30	185	-
ESR 7H	ESC 7H	-	R134a	HBP	K	288	1,61	220	-
ESR 9H	ESC 9H	-	R134a	HBP	K	396	2,31	220	-
ESR 11H	ESC 11H	-	R134a	HBP	K	472	2,64	220	-
TA 13 EV	-	-	R404 A	LBP	K/E	463	2,15	950	230.096
TN 17 EV	-	-	R404 A	LBP	K/E	627	2,93	950	230.097
TN 21 EV	-	-	R404 A	LBP	K/E	727	3,61	950	230.099

PictureS Mbsm Dot Pro : www.mbsm.pro

Mbsm.pro, Réfrigérateur, remplacement d'un moteur, R600a ,par un ,moteur R134a

Category: Solutions, Tester ok
written by Jamila | 17 May 2020

Bonsoir, MBSM.PRO|

le remplacement d'un compresseur R600A par un compresseur R134A est possible a condition:

- de rincer le circuit frigorifique a l'azote ou R22 et pas avec l'air comprimer car il contient de humidité .
- remplacer bien evidement le deshydrateur (filtre)
- de charger correctement (ni plus, ni moins).

il est conseiller et préférable de remplacer le compresseur par un équivalent (faute de trouver le même), fonctionnant au même gaz!

il faudrait mettre le double de r134a par rapport au r600a ,85/90 grammes,contrôler la pression (0.2 bars de r134a en fonctionnement stabilisé),mais ce n'est pas certain que cela fonctionne bien car le capillaire (longueur et diamètre intérieur) est différent suivant les fluides utilisés car la perte de charge n'est pas la même.

Il faut changer le capillaire

La Température avec le capillaire de r600a ne dépassera 16 degré Celsius

PictureS Mbsm Dot Pro : www.mbsm.pro

Bonsoir, MBSM.PRO

le remplacement d'un compresseur R600A par un compresseur R134A est possible a condition:

www.mbsm.pro, cOMPRESsOR A/A , R22
,124MBTU, 220V/380v, 3HP,
H25G124DBDE, BRISTOL

Category: Solutions,Tester ok
written by Jamila | 17 May 2020



PictureS Mbsm Dot Pro : www.mbsm.pro

www.mbsm.pro, cOMPRESsOR A/A ,124MBTU, 220V/380v, 3HP, H25G124DBDE, BRISTOL