

MAQ QD168H, Can this compressor be installed in a 1.5-meter two-door refrigerator?

Category: Refrigeration

written by www.mbsm.pro | 29 January 2026



Private Picture Copyright : WWW.MBSM.PRO

The MAQ QD168H is a high-performance 1/4 HP hermetic compressor designed for R134a refrigerant systems. Ideal for domestic refrigerators and freezers, it offers a cooling capacity of approximately 195W. This article provides a deep dive into its electrical characteristics, displacement, and compatible replacements to ensure a professional and efficient cooling system repair or build.

The Technician's Take on the Matsushita QA77C17GAX5

Category: Refrigeration

written by www.mbsm.pro | 29 January 2026



Private Picture Copyright : WWW.MBSM.PRO

The Matsushita QA77C17GAX5 is a workhorse in the refrigeration world. This 1/4 HP R134a compressor is a go-to for many household fridges and freezers. In this guide, we break down the technical specs, electrical wiring, and the most reliable replacement options to help you get your cooling system back up and running fast.

The Technician's Take on the Matsushita QA77C17GAX5

Category: Refrigeration

written by www.mbsm.pro | 29 January 2026



Private Picture Copyright : WWW.MBSM.PRO

The Matsushita QA77C17GAX5 is a workhorse in the refrigeration world. This 1/4 HP R134a compressor is a go-to for many household fridges and freezers. In this guide, we break down the technical specs, electrical wiring, and the most reliable replacement options to help you get your cooling system back up and running fast.

The ZMC EGM60AF compressor can be installed on a Toshiba 14-inch refrigerator

Category: Refrigeration

written by www.mbsm.pro | 29 January 2026



Private Picture Copyright : WWW.MBSM.PRO

The ZMC EGM60AF is a high-performance hermetic compressor designed for low back pressure applications in domestic refrigeration. Engineered with precision in Egypt, this 1/6 HP unit operates on R134a refrigerant and is tailored for 220-240V 50Hz power systems. It offers a reliable cooling solution for small to medium household refrigerators and upright freezers worldwide.

Huayi HYE55YL63 and ZMC EGM60AF

Category: Refrigeration

written by www.mbsm.pro | 29 January 2026



Private Picture Copyright : WWW.MBSM.PRO

The Huayi HYE55YL63 and ZMC EGM60AF are two industry-standard 1/5 HP compressors used in domestic refrigerators. While both utilize R134a refrigerant, they differ in displacement and oil capacity. This technical review compares their performance curves and cooling capacities to help technicians select the ideal replacement for Kiriazi and other 14-foot refrigerators.

compressors: L58CZ1 (1/6HP), L65CZ1 (1/5HP), L72CZ1 (1/4HP), K270CZ1 (1/3HP), and K375CZ1 (1/2HP)

Category: Refrigeration

written by www.mbsm.pro | 29 January 2026



Donper has established itself as a powerhouse in the hermetic compressor industry, providing reliable cooling solutions for domestic and light commercial applications. This technical analysis explores the R134a L and K series, ranging from 1/6 HP to 1/2 HP, offering engineers and technicians the critical data needed for successful repairs and system optimizations.

Compressor, Matsushita, D77C18RAX5, 1/4 hp, Panasonic

Category: Refrigeration

written by www.mbsm.pro | 29 January 2026



Picture5 Mbsm Dot Pro : www.mbsm.pro

The Matsushita D77C18RAX5 is a legendary 1/4 HP refrigerator compressor optimized for R134a refrigerant. Known for its robust RSIR motor and 7.7cc displacement, it delivers 195W of cooling power for domestic freezers and refrigerators. This guide provides full technical data, wiring details, and the best professional cross-reference replacements for modern refrigeration repair.

Huayi HYE69Y63 Compressor 1/5 HP R134a LBP

Category: Refrigeration

written by www.mbsm.pro | 29 January 2026



Private Picture Copyright : WWW.MBSM.PRO

The Huayi HYE69Y63 is a highly efficient hermetic reciprocating compressor designed for low back pressure applications using R134a refrigerant. With a 1/5 HP rating and dual-frequency compatibility (50/60Hz), this motor is a cornerstone for domestic refrigerators and freezers. This comprehensive guide covers technical datasheets, electrical wiring, and professional replacement strategies for global cooling systems.

GMCC PE75H1C Compressor 1/4 HP R134a LBP

Category: Refrigeration

written by www.mbsm.pro | 29 January 2026



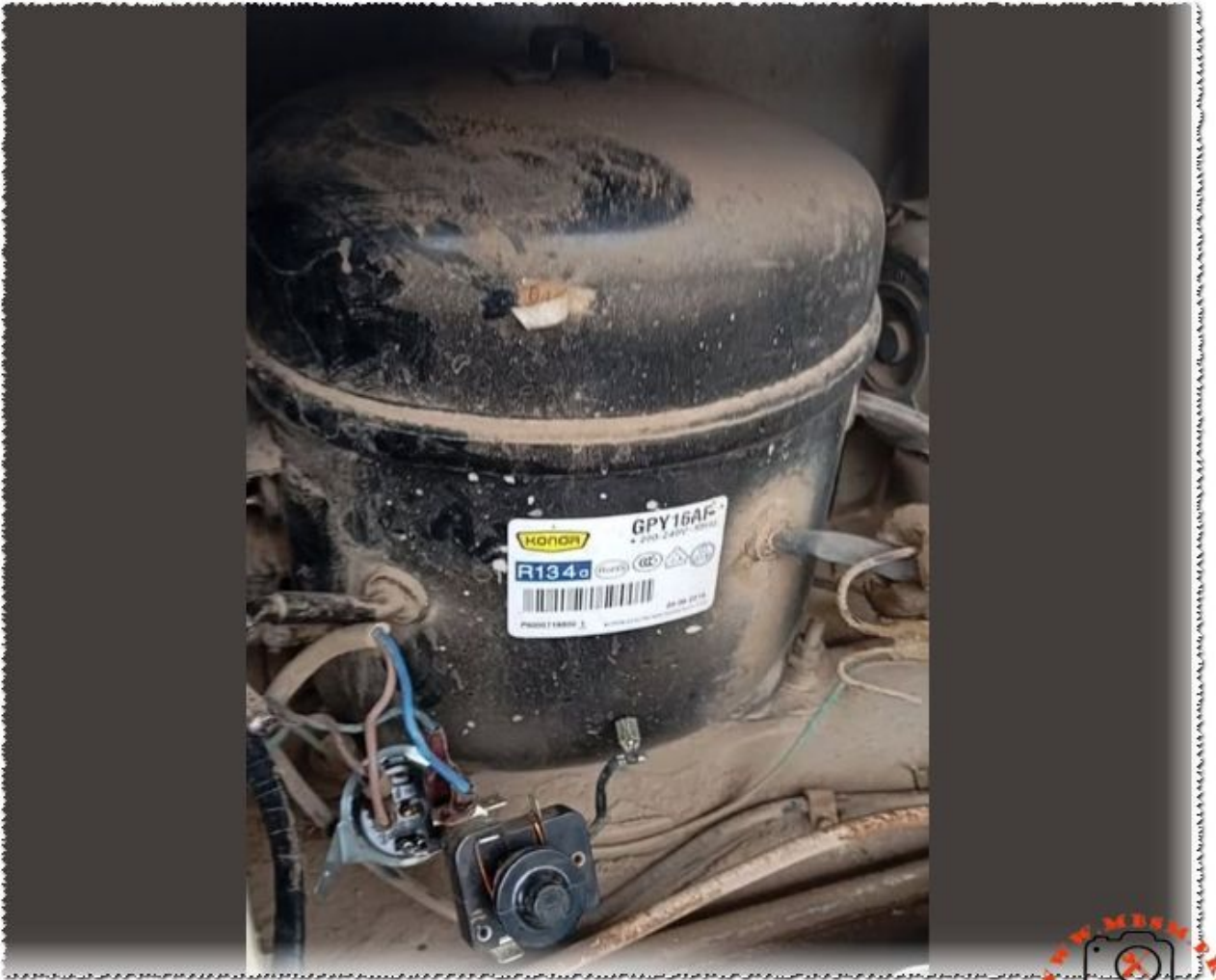
Private Picture Copyright : WWW.MBSM.PRO

The GMCC PE75H1C is a robust hermetic reciprocating compressor engineered for low back pressure applications using R134a refrigerant. Operating at 220-240V 50Hz, this 1/4 HP motor provides a cooling capacity of approximately 185W. This article provides technical datasheets, electrical wiring schemas, and professional cross-reference guides for global refrigeration maintenance and engineering.

Compressor, Konor, GPY16AF, 1/2 HP, R134a, LBP

Category: Refrigeration

written by www.mbsm.pro | 29 January 2026



Private Picture Copyright : WWW.MBSM.PRO

The Konor GPY16AF is a robust hermetic reciprocating compressor engineered for low back pressure applications using R134a refrigerant. With a displacement of 16.2 cm³, this 1/2 HP unit is a staple in commercial freezers and large refrigerators. This guide provides detailed technical data, wiring diagrams, and professional cross-reference options for field technicians.