

HPL25YE-5-K , DAEWOO COMPRESSOR ,FOR REFRIGERATOR ,1/4 Hp , 220/240 V , R134A

Category: Technologie,Tester ok
written by www.mbsm.pro | 16 April 2020



OPPO F11 Pro

Private Picture Copyright : WWW.MBSM.PRO

HPL25YE-5-K , DAEWOO COMPRESSOR ,FOR REFRIGERATOR ,1/4 Hp , 220/240 V , R134A

Compressor ,TECUMSEH 1/4HP ,THG1374YS, R134A ,tm271-ms-393

Category: Technologie,Tester ok
written by www.mbsm.pro | 16 April 2020



Compressor ,TECUMSEH 1/4HP ,THG1374YS, R134A ,tm271-ms-393

mbsm.pro , Compresseur Aspera , Embraco ,NEK2168GK , R404a/R507 , LBP ,3/4 HP,nominal output: 707 W

Category: Technologie,Tester ok
written by www.mbsm.pro | 16 April 2020



PictureS Mbsm Dot Pro : www.mbsm.pro

EMBRACO is a company specialized in cooling solutions and world leader in the hermetic compressor market. Our mission: provide innovative solutions for a better quality of life, always attentive to technological excellence and sustainability. Technological leadership, operational excellence and sustainability are some of the pillars which ensure the EMBRACO differential over other companies in the world market. Its products are now considered the favorite leading home appliance manufacturers by major automakers and are spotlighted by manufacturers of commercial refrigeration equipment. With global operations and production capacity exceeding 34 million units a year, the company offers solutions that are differentiated for their innovation and low energy consumption. Its 11.500 employees work in factories and offices located in Brazil (headquarters), China, Italy, Slovakia, Mexico, the United States and Russia. Energy efficiency is constantly sought in the processes, products and relationships with the communities where it operates. Our company is the absolute leader in this segment, being able to offer products that meet the most restrictive international standards regarding energy consumption.

As a worldwide leader, EMBRACO tries to anticipate market changes, and in doing so, our company is in a state of permanent transformation. We continuously assess our processes in order to maintain our leadership within the industry and promote growth, without forgetting the pillars of our organization.

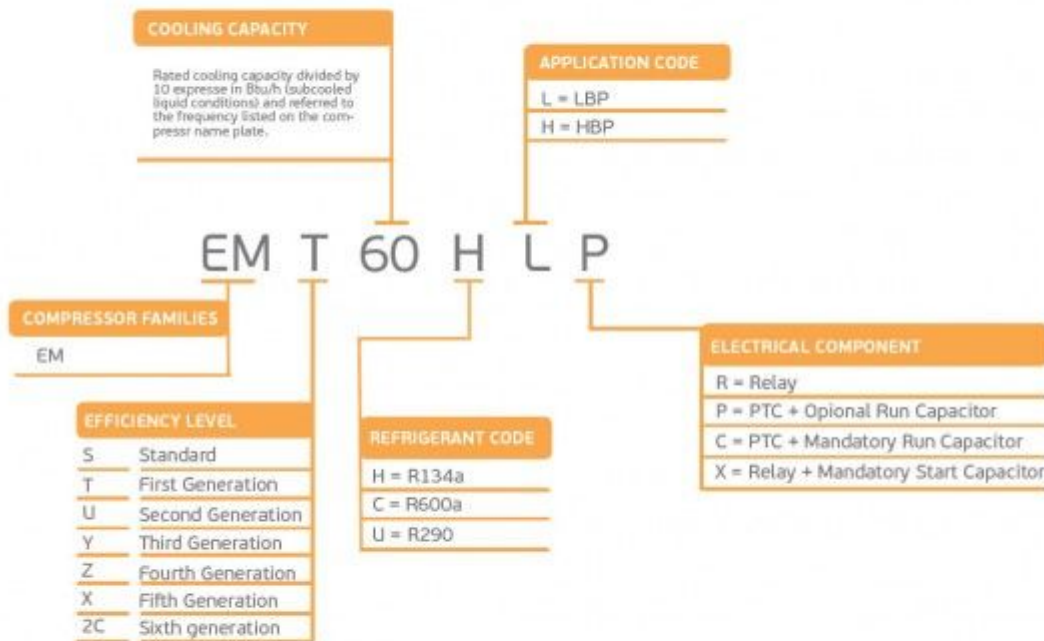
Compressor ASPERA NEK2168GK | NEK 2168 GK

| | |
|---|---------------|
| Refrigerant | R404/R507 |
| Working range[stC] LBP | -40 to -10 |
| Nominal capacity [W] (evaporating temperature -23,3C, Condensing temperatur +54,4C) | 688 |
| Power supply | 220-240V 50Hz |
| Engine type | CSIR |
| Displacement [cm ³] | 14,28 |
| Weight [kg] | 11,6 |
| Evaporating temperature +55 C | |

| Evaporating Temperature | Cooling Capacity +/-5% | Power Consumption +/-5% | Current Consumption +/-5% | Gas Flow Rate +/-5% | Efficiency +/-7% | | | |
|-------------------------|------------------------|-------------------------|---------------------------|---------------------|------------------|--------|-----------|-------|
| °C | (kcal/h) | (W) | (Btu/h) | (W) | (A) | (kg/h) | (kcal/Wh) | (W/W) |
| -40 | 226 | 263 | 897 | 370 | 3,46 | 6,01 | 0,61 | 0,71 |
| -35 | 309 | 359 | 1.224 | 435 | 3,57 | 8,22 | 0,71 | 0,82 |
| -30 | 413 | 481 | 1.640 | 506 | 3,73 | 11,06 | 0,82 | 0,95 |
| -25 | 541 | 629 | 2.146 | 584 | 3,95 | 14,52 | 0,93 | 1,08 |
| -20 | 691 | 803 | 2.740 | 668 | 4,21 | 18,64 | 1,03 | 1,20 |
| -15 | 863 | 1.004 | 3.424 | 759 | 4,53 | 23,43 | 1,14 | 1,32 |
| -10 | 1.058 | 1.230 | 4.197 | 856 | 4,90 | 28,92 | 1,24 | 1,44 |

Refrigerant: R404A, R507

| | | R404A / R507 | | | | | | | |
|-----------|-----------|--------------|-------------|----------------|-------------|-------|-------------|----------------|-------------|
| | | LBP | VOLT. FREQ. | COOL. CAP. [W] | DISPL. [cc] | MBP | VOLT. FREQ. | COOL. CAP. [W] | DISPL. [cc] |
| NE NEK | NEK2117GK | A | 125 | 4,51 | NEK6144GK | A | 550 | 4,51 | |
| | NEK2121GK | A | 151 | 5,44 | NEK6165GK | A | 743 | 6,20 | |
| | NEK2125GK | A | 182 | 6,20 | NEK6181GK | A | 841 | 7,28 | |
| | NEK2130GK | A | 213 | 7,37 | NEK6210GK | A / N | 1.005 | 8,77 | |
| | NEK2134GK | A / N | 248 | 8,77 | NEK6213GK | A | 1.337 | 12,11 | |
| | NEK2150GK | A | 329 | 12,11 | NEK6217GK | A / N | 1.164 | 14,28 | |
| | NEK2168GK | A | 378 | 14,28 | | | | | |
| | NEK2172GK | C | 819 | 16,80 | | | | | |



embraco **NEK**



R404A **LBP**

PictureS Mbsm Dot Pro : www.mbsm.pro

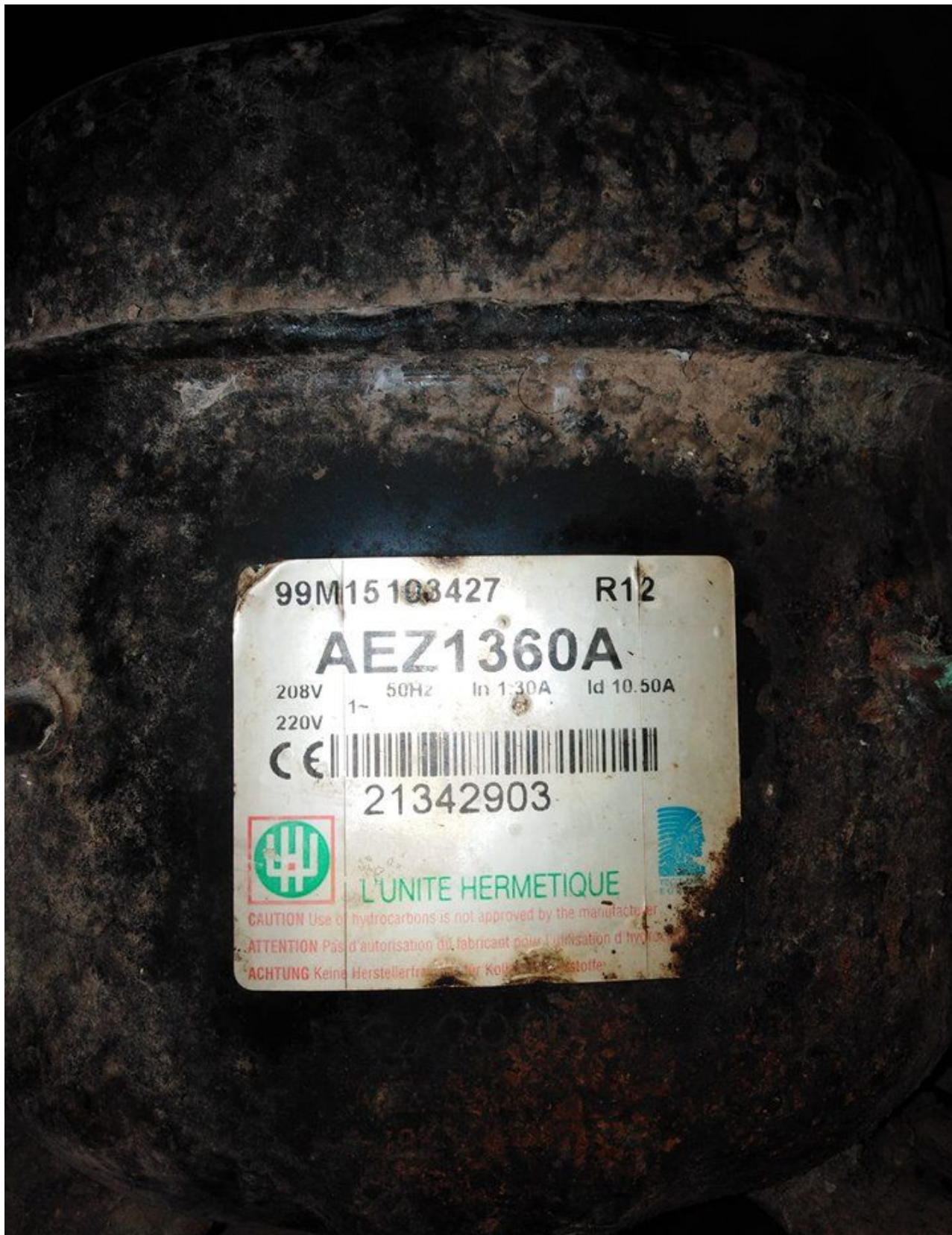


Picture5 Mbsm Dot Pro : www.mbsm.pro

mbsm.pro , Compresseur Aspera , Embraco NEK2168GK , R404A , LBP ,3/4 HP
Compresseur hermetique de Aspera – Embraco NEK2168GK – R404A
3/4 HP
220-240V 50 Hz
Cylindrée = 14.3 CM3
APPLICATIONS = LBP
Moteur type: CSR

www.mbsm.pro, AEZ1360A, Kirby,
Tecumseh, Compressors ,low back,
pressure, models, 240v/50HT , 1PH ,
1/5Hp , Gaz 12A

Category: Solutions,Technologie,Tester ok
written by www.mbsm.pro | 16 April 2020



PictureS Mbsm Dot Pro : www.mbsm.pro

Points forts : Compresseur aez1360a pour réfrigérateur fagor FAGOR
MA-10CA562COMP-QZQAZ

www.mbsm.pro , Original New, ASD53K,
Original New 1/6HP, R134a, LBP,
Wanbao, Refrigerator, compressor,
China, R134A, 220V/50Hz, 1PH, 144W,
Huaguang, Refrigerator Reciprocating

Category: Solutions,Technologie,Tester ok
written by Jamila | 16 April 2020



Picture5 Mbsm Dot Pro : www.mbsm.pro

www.mbsm.pro , Original New, ASD53K, Original New 1/6HP, R134a, LBP, Wanbao, Refrigerator, compressor,China, R134A, 220V/50Hz, 1PH, 144W, Huaguang, Refrigerator Reciprocating

www.mbsm.pro , ASD65 , R134A
,220V/50Hz ,1/5HP 173W ,Huaguang
,Refrigerator, Compressor ,LBP

Category: Solutions,Tester ok
written by www.mbsm.pro | 16 April 2020



PictureS Mbsm Dot Pro : www.mbsm.pro

www.mbsm.pro , ASD65 , R134A , 220V/50Hz , 1/5HP 173W , Huaguang , Refrigerator , Compressor , LBP

www.mbsm.pro , Cold ,refrigeration ,compressor 1/4 hp, QD76HG ,HM Series , R134a ,HBP

Category: Solutions,Tester ok
written by www.mbsm.pro | 16 April 2020



Picture5 Mbsm Dot Pro : www.mbsm.pro

www.mbsm.pro , Cold ,refrigeration ,compressor 1/4 hp, QD76HG ,HM Series , R134a

www.mbsm.pro ,ZEL ,COMPRESSEUR ,R134a ,1/4 HP ,GVY75AA

Category: Solutions,Tester ok
written by www.mbsm.pro | 16 April 2020



PictureS Mbsm Dot Pro : www.mbsm.pro

Compresseur frigorifique
Puissance en cheval 1/4 CV
Alimentation 220-240 V 50 Hz
Gaz R134a

www.mbsm.pro , TLES7FT.4 ,
COMPRESSORE SECOP ,TLES7FT.4 4707,
R134a , LBP ,1/4 hp/60hz, 1/5 hp/50hz
, 1ph ,Danfoss,4707, compressors
,medium temperature, Kiriazi 335l

Category: Technologie,Tester ok
written by www.mbsm.pro | 16 April 2020



Private Picture Copyright : WWW.MBSM.PRO

www.mbsm.pro , TLES7FT.4 , COMPRESSORE SECOP ,TLES7FT.4 , R134a , LBP ,Danfoss
compressors ,medium temperature, HMBP

Mbsm.pro , Compressor ESC 8.5, R134a,
Necchi (530591) , 1/5 Hp ,159 w

Category: Solutions,Tester ok
written by Jamila | 16 April 2020



PictureS Mbsm Dot Pro : www.mbsm.pro

Mbsm.pro , Compressor ESC 8.5, R134a, Necchi (530591) , 1/5 Hp ,159 w

| | Motore | cm ³ | Volt | Watt -10°C | Watt -30°C | |
|---------|-------------------------------------|-----------------|-------|------------|------------|-----|
| RIB5150 | A9EV – R22 – 3/8 – LBP | CSR | 9,29 | 220 | 642 | |
| RIB5160 | A11EV – R22 – 1/2 Hp – LBP | CSR | 11,11 | 220 | 781 | |
| RIB5350 | A13EV – R22 – 5/8 Hp – LBP | CSR | 13,35 | 220 | 967 | |
| RIB5450 | N17EV – R22 – 3/4 Hp – LBP | CSR | 17,52 | 220 | 1221 | |
| RIB5550 | N21EV – R22 -1- Hp LBP | CSR | 20,68 | 220 | 1464 | |
| RIB5650 | N23EV – R22 – 1,2 Hp – LBP | CSR | 23,18 | 230 | 1616 | |
| RIB7104 | NB4 COMPRESS. R12 24V. FRAMEC 1/8 = | | | | | |
| RIB7108 | NB8 COMPRESS. R12 24V.FRAMEC 175w.= | | | | | |
| RIB7113 | NB13HP COMPRESS.R12 24V.FRAMEC 1/3= | | | | | |
| RIBB010 | ETR 3 – R134A – 1/12 Hp – LBP | RSIR | 3,00 | 220 | 127 | |
| RIBB020 | ETR 3,5 HP 1/10 R134A – LBP | RSIR | 3,50 | 220 | 156 | |
| RIBB030 | ETR 4 HP 1/8 R134A – LBP | RSIR | 4,10 | 220 | 179 | |
| RIBB040 | ETR 5 – R134a – HP 1/6 – LBP | RSIR | 5,12 | 220 | 231 | |
| RIBB050 | ETR5,5 – R134a – 1/6 Hp – LBP | RSIR | 5,55 | 220 | 257 | |
| RIBB080 | ESC5 – R134a – 1/6 Hp – LBP | RSIR | 5,12 | 220 | 222 | |
| RIBB100 | ESC7 – R134a – 1/5 Hp – LBP | RSIR | 7,00 | 220 | 307 | |
| RIBB110 | ESC8 – R134a – 1/5 Hp – LBP | RSIR | 7,75 | 220 | 358 | |
| RIBB130 | ESC9 – R134a – 1/4 Hp – LBP | RSIR | 9,07 | 220 | 424 | |
| RIBB140 | ESC11 – R134a – 1/3 Hp – LBP | RSIR | 10,63 | 220 | 501 | |
| RIBB200 | ESC4H – R134a – 1/8 Hp – LBP | RSIR | 4,10 | 220 | 177 | |
| RIBB400 | ESR 7 – R134a – 1/5 Hp – LBP | RSIR | 7,00 | 220 | 307 | |
| RIBB410 | ESR 8 – R134a – 1/5 Hp – LBP | RSIR | 7,75 | 220 | 358 | |
| RIBB430 | ESR 9 – R134a – 1/4 Hp – LBP | RSIR | 9,07 | 220 | 424 | |
| RIBB440 | ESR11 – R134a – 1/3 Hp – LBP | RSIR | 10,63 | 220 | 501 | |
| RIBE040 | TN17EV – R404 – 3/4 Hp – LBP | CSR | 17,52 | 220 | | 565 |
| RIBE050 | TN21EV – R404 – 1 Hp – LBP | CSR | 20,68 | 220 | | 644 |
| RIBE060 | TN23EV – R404 – 1,2 Hp – LBP | CSR | 23,18 | 220 | | 726 |
| RIBT999 | COMPRESSORE ELECTROLUX DESCR.BOLLA | | | | | |



| neue Type | Verdichter Type | | Kälte- mittel | Bereich | 1)Betrieb | 2)Leistungs- aufnahme Watt | 3)Strom- aufnahme A | Öl- füllung cm ³ | Bestell-Nr. |
|---------------------------|--------------------|-------------------|------------------|---------|-----------|----------------------------------|---------------------------|-----------------------------------|-------------|
| | | Vorläufer Type | | | | | | | |
| mit Esterölfüllung | | | | | | | | | |
| *ETR 3 | | - | R134a | LBP | K | 68 | 0,55 | 185 | *230.051 |
| *ETR 3,5 | | - | R134a | LBP | K | 81 | 0,58 | 185 | *230.053 |
| *ETR 4 | | - | R134a | LBP | K | 89 | 0,64 | 185 | *230.055 |
| *ETR 5 | | - | R134a | LBP | K | 109 | 0,76 | 185 | *230.057 |
| *ETR 5,5 | | - | R134a | LBP | K | 118 | 0,80 | 185 | *230.059 |
| *ESR 7 | ESC 7 | | R134a | LBP | K | 127 | 0,83 | 220 | *230.073 |
| *ESR 8 | ESC 8 | | R134a | LBP | K | 149 | 1,00 | 220 | *230.075 |
| *ESR 8,5 | ESC 8,5 | | R134a | LBP | K | 159 | 1,07 | 220 | *230.077 |
| *ESR 9 | ESC 9 | | R134a | LBP | K | 177 | 1,20 | 220 | *230.079 |
| *ESR 11 | ESC 11 | | R134a | LBP | K | 215 | 1,42 | 220 | *230.081 |
| ETR 4H | ES(C)R4H | | R134a | HBP | K | 187 | 1,13 | 185 | - |
| ETR 5H | ES(C)R5H | | R134a | HBP | K | 231 | 1,30 | 185 | - |
| ESR 7H | ESC 7H | | R134a | HBP | K | 288 | 1,61 | 220 | - |
| ESR 9H | ESC 9H | | R134a | HBP | K | 396 | 2,31 | 220 | - |
| ESR 11H | ESC 11H | | R134a | HBP | K | 472 | 2,64 | 220 | - |
| TA 13 EV | | - | R404 A | LBP | K/E | 463 | 2,15 | 950 | 230.096 |
| TN 17 EV | | - | R404 A | LBP | K/E | 627 | 2,93 | 950 | 230.097 |
| TN 21 EV | | - | R404 A | LBP | K/E | 727 | 3,61 | 950 | 230.099 |