

Neon compressor, QD128H(360W), 1/3Hp,  
QD158H(450W), 3/8+, QD142H(395W),  
3/8+, QD168H (322W), 1/2Hp, R134a

Category: compressor

written by [www.mbsm.pro](http://www.mbsm.pro) | 19 December 2021



Neon compressor, QD128H(360W), 1/3Hp, QD158H(450W), 3/8+, QD142H(395W), 3/8+,  
QD168H (322W), 1/2Hp, R134a

NE2125GK, NEK2130GK, NEK6181GK,  
EMT6165GK, ML90FB, KB2416ZK2,  
R404a/R507, 1/3HP, LBP, All

# COMPRESSEURS, GAZ R404A – R507, EMBRACO

Category: compressor

written by [www.mbsm.pro](http://www.mbsm.pro) | 19 December 2021

## الصفات الفنية

R404a/R507	refrigerant	605334	رقم القطعة
V 220-240	voltage	NEK2130GK	type
LBP	application	Hz 50	frequency
HP 1/3	power	kg 10.9	weight
CSIR	motor system	cm <sup>3</sup> 7.37	cylinder capacity
W 332	power at -25°C	W 255	power at -30°C
W 523	power at -15°C	W 421	power at -20°C
W -	power at -5°C	W 639	power at -10°C
W -	power at +5°C	W -	power at 0°C
R404a/R507	refrigerant	W -	power at +10°C
HP 1/3	power	NEK2130GK	type
CSIR	motor system	cm <sup>3</sup> 7.37	cylinder capacity
W 639	power at -10°C	V 220-240	voltage
W -	power at 0°C	W -	power at -5°C
W 255	power at -30°C	W -	power at +5°C
W 421	power at -20°C	W 332	power at -25°C
W -	power at +10°C	W 523	power at -15°C
Hz 50	frequency	LBP	application
		kg 10.9	weight



Private Picture Copyright : [WWW.MBSM.PRO](http://WWW.MBSM.PRO)

## Table of Contents

		<b>Page</b>
	• Multi-Application Compressors	232-241
	• Specific Application Hermetic Compressors	242-263
		
	• Semi-Hermetic Compressors	264-291, 293-295
	• Service Valves	292-293
		
	• Open Compressors	295-298
		



Private Picture Copyright : [WWW.MBSM.PRO](http://WWW.MBSM.PRO)

**Compressor coolant R404a/R507 type  
NE2125GK 220-240V 50Hz LBP fully  
hermetic 10,45kg 1/3HP**

R404a/R507	refrigerant	605018	piece number
HP 1/3	power	NE2125GK	type
CSIR	motor system	cm³ 8.78	cylinder capacity
IN -	power at -5°C	Watts 534	power at -10°C
IN -	power at +5°C	IN -	power at 0°C
.W 213	power at -30°C	.W 160	power at -35°C
.W 354	power at -20°C	.W 278	power at -25°C
IN -	power at +10°C	.W 439	power at -15°C
kg 10.45	weight	LBP	application
V 220-240	voltage	Hz 50	frequency



Private Picture Copyright: WWW.MBSM.PRO

## Compressor coolant R404a/R507 type NEK2130GK 220-240V 50Hz LBP 10,9kg 1/3HP

### الصفات الفنية

R404a/R507	refrigerant	605334	رقم القطعة
V 220-240	voltage	NEK2130GK	type
LBP	application	Hz 50	frequency
HP 1/3	power	kg 10.9	weight
CSIR	motor system	cm³ 7.37	cylinder capacity
W 332	power at -25°C	W 255	power at -30°C
W 523	power at -15°C	W 421	power at -20°C
W -	power at -5°C	W 639	power at -10°C
W -	power at +5°C	W -	power at 0°C
R404a/R507	refrigerant	W -	power at +10°C
HP 1/3	power	NEK2130GK	type
CSIR	motor system	cm³ 7.37	cylinder capacity
W 639	power at -10°C	V 220-240	voltage
W -	power at 0°C	W -	power at -5°C
W 255	power at -30°C	W -	power at +5°C
W 421	power at -20°C	W 332	power at -25°C
W -	power at +10°C	W 523	power at -15°C
Hz 50	frequency	LBP	application
		kg 10.9	weight

Private Picture Copyright: WWW.MBSM.PRO

## NEK6181GK ASPERA EMBRACO COMPRESSOR 1/3HP R404A / R507

### DESCRIPTION

NEK6181GK Aspera Embraco compressor

# 1/3HP

- Refrigerant: R507a R404A
- Power range(W): 1 – 1,5 kW
- Working area: MBP
- Design type: Hermetic
- Use with: Expansion/Capillary
- Power range(HP):0-2
- Power supply: 220 – 240V/1/50Hz
- Oil type: POE22
- Engine type: CSIR
- Article condition:New

## **EMT6165GK ASPERA EMBRACO COMPRESSOR 1/3HP R404A / R507**

### DESCRIPTION

## **Aspera Embraco EMT6165GK compressor 1/3HP**

- high evaporation temperature
- Refrigerant: R507a R404A
- Power range(W): 401 – 500 W 701 – 1000 W
- Performance range:-20 C to +10 C
- Connecting size:4,9 mm
- Working area: MBP
- Design type: Hermetic
- Model series: EMT
- Use with: Expansion/Capillary
- Power range(HP):0-2
- Power supply: 240V/1/50Hz
- Oil type: POE22
- Engine type: CSIR
- Article condition:New

## **Compressor ACC – ML90FB, LBP – R404A, R507, 1/3HP, 220-240V**

Compressor ACC – ML90FB, LBP – R404A, 220-240/50Hz Injection: capillary tube / expansion valve Power: 1/3 HP Refrigerating capacity at -25 / +55°C: 276 W, power consumption: 333 W Max Ambient temperature: 43 °C Displacement: 8.85 cm<sup>3</sup> Engine type: CSIR Oil filling: 400 cm<sup>3</sup> Oil type: ISO VG 46 ESTER Starting element: HST Start capacitor: 47- 56 / 330 µF/V Voltage range: 187-264 V Starting current: 12.2 A Weight: 11 kg Connections: 6.5 x 4.9 mm Main winding resistance: 8.42 (25°C) Ohm Winding resistance: 29.75 (25°C) Ohm. cooling capacity measured for condensation temperature of: 45°C, measuring conditions: ASHRAECooling capacity

-10 °C -15 °C -20 °C -25 °C -30 °C -35 °C -40 °C

729 606 495 394 305 227 161

**Shipping Class** Standard  
**Scope Of Application** LBP  
**Lieferzeit** 2-3 Wochen  
**Type Of Construction** Piston  
**Condensation Temperature** 45°C  
**Maker** ACC  
**Manufacturer No.** ML90FB  
**Displacement In Cm3** 8.85  
**Measuring Requirements** Ashrae  
**Refrigerants** R404A, R507  
**Series** ML  
**Condensing Units Compressors Compressors**  
**Suspense** 220-240V  
**Weight In Kg** 12.1

**Supco KB2416ZK2 – Compressor LBP HST  
1/3HP 1580/1696 BTU 208/230V – R404a  
/ R507 Refrigerant – 1580 / 1696 BTU  
@ -10°F – 0.32" I.D. Suction Size –  
0.19" I.D. Discharge**

**Stock Code** KB2416ZK2  
**Brand** Supco  
**Voltage (V)** 208 / 230 VAC  
**Phase** Single Phase  
**HP Rating:** 1 / 3 HP  
**Oil Charge (oz.)** 507 cc.  
**Motor** High Start Torque  
**Operates** Icemakers; Refrigerators  
**Cross Refefence** Replacement Part:NEK2134GK ; Manufacturer :Embraco

[Mbsm\\_dot\\_pro\\_private\\_PDF\\_KB2416ZK2\\_prd\\_001\\_1\\_Télécharger](#)

**FREON R404a/R507 220-240V 50HZ**

Code	Prix	Type	Marque	Puissance HP	Cylindrée CM3	Pression	Schéma électrique	Capacité frigorifique en watt-10°C-5°C0°C+5°C			
SEQ616	89.51€	EMT6144GK	EMBRACO	1/5	3.97	HMBP	CSIR	360	438	530	630
SEQ608	85.02€	NEK6181GK	EMBRACO	1/3	7.28	HMBP	CSIR	565	689	836	1006
SEQ690	86.26€	NEK6210GK	EMBRACO	3/8	8.78	HMBP	CSIR	669	821	999	1205
SEQ709	122.29€	AEZ4425Z	UNITE HERMETIQUE	1/5	4.50	HMBP	CSIR	263	341	432	587
VNQ6987	114.69€	NEK2125GK	EMBRACO	1/4	6.20	LBP	CSIR	243	314	398	494
VASQ6276	112.12€	NEK6144GK	EMBRACO	1/4L	4.52	HMBP	CSIR	368	451	549	660
SEQ703	132.23€	NEK6213GK	EMBRACO	1/2	12.12	HMBP	CSIR	919	1120	1350	1610
CYQ6367	155.22€	NEK2168GK	EMBRACO	5/8	14.30	LBP	CSR	500	650	828	1030
FQQ6559	144.34€	NEK6217GK	EMBRACO	5/8	14.30	HMBP	CSR	1120	1360	1630	1932

VGQ6677	192.44€	AE4470Z	UNITE HERMETIQUE	1/2	12.00	HMBP	CSIR		
VGQ6676	180.64€	AE4450Z	UNITE HERMETIQUE	3/8	8.80	HMBP	CSIR		
SEQ912	198.59€	NJ2212GK	EMBRACO	1.7	34.37	LBP	CSR	945	1333 1775 2273
SEQ617	191.35€	NEK2150GK	EMBRACO	5/8	12.12	LBP	CSIR	445	570 716 888
SEQ902	175.39€	NT6222GK	EMBRACO	3/4	17.40	HMBP	CSR	1280	1590 1930 2308
SEQ609	221.62€	NJ2192GK	EMBRACO	1.2	26.00	LBP	CSR	752	1120 1345 1725
VNQ6902	198.45€	NT6226GK	EMBRACO	1	22.40	HMBP	CSR	1744	2144 2598 3095
VNQ6916	223.47€	NJ9232GK	EMBRACO	1.2	26.20	HMBP	CSR	1953	2458 3182 4070
SEQ674	256.69€	CAJ2432Z	UNITE HERMETIQUE	3/4	18.30	LBP	CSR	510	792 865 1560
CYQ6239	276.42€	CAJ2446Z	UNITE HERMETIQUE	1.2	26.10	LBP	CSR	797	1194 1423 2290
CYQ6236	287.60€	CAJ2428Z	UNITE HERMETIQUE	5/8	15.20	LBP	CSR	394	628 762 1261
IQ1517	307.80€	CAJ9480Z	UNITE HERMETIQUE	5/8	15.20	HMBP	CSR	1009	1284 1607 2172
SEQ990	354.18€	CAJ4517Z	UNITE HERMETIQUE	1.2	25.90	HMBP	CSR	1776	2273 2857 3860
SEQ999	284.58€	CAJ9510Z	UNITE HERMETIQUE	1	18.30	HMBP	CSR	1252	1583 1972 2650
ZNEQ6572	360.83€	CAJ2464Z	UNITE HERMETIQUE	1.5	34.40	LBP	CSR	1076	1605 1902 3012
VASQ6285	348.56€	NJ9238GK	EMBRACO	1.5	32.70	HMBP	CSR	2485	2956 3509 4563
SEQ601	367.83€	NT6220GK	EMBRACO	5/8	14.50	HMBP	CSR	1126	1395 1700
SEQ921	394.30€	CAJ9513Z	UNITE HERMETIQUE	1.1	24.20	HMBP	CSR	1501	1955 2485 3406
VASQ7698	392.13€	CAJ4519Z	UNITE HERMETIQUE	1.5	34.40	HMBP	CSR	2353	3009 3756 5030
ZRQ7716	441.16€	CAJ2440Z	UNITE HERMETIQUE	1	22.80	LBP	CSR	647	945 1166 1876

HMP: Haute moyenne pression

HP: Haute pression

LBP: Basse pression

## FREON R404a/R507 220-240V 50HZ

Code	Prix	Type	Marque	Puissance HP	Cylindrée CM3	Pression	Schéma électrique	Capacité frigorigène en watt-10°C-5°C0°C+5°C	
SEQ616	89.51€	EMT6144GK	EMBRACO	1/5	3.97	HMBP	CSIR	360	438 530 630
SEQ608	85.02€	NEK6181GK	EMBRACO	1/3	7.28	HMBP	CSIR	565	689 836 1006
SEQ690	86.26€	NEK6210GK	EMBRACO	3/8	8.78	HMBP	CSIR	669	821 999 1205
SEQ709	122.29€	AEZ4425Z	UNITE HERMETIQUE	1/5	4.50	HMBP	CSIR	263	341 432 587
VNQ6987	114.69€	NEK2125GK	EMBRACO	1/4	6.20	LBP	CSIR	243	314 398 494
VASQ6276	112.12€	NEK6144GK	EMBRACO	1/4L	4.52	HMBP	CSIR	368	451 549 660
SEQ703	132.23€	NEK6213GK	EMBRACO	1/2	12.12	HMBP	CSIR	919	1120 1350 1610
CYQ6367	155.22€	NEK2168GK	EMBRACO	5/8	14.30	LBP	CSR	500	650 828 1030
FQ6559	144.34€	NEK6217GK	EMBRACO	5/8	14.30	HMBP	CSR	1120	1360 1630 1932
VGQ6677	192.44€	AE4470Z	UNITE HERMETIQUE	1/2	12.00	HMBP	CSIR		
VGQ6676	180.64€	AE4450Z	UNITE HERMETIQUE	3/8	8.80	HMBP	CSIR		
SEQ912	198.59€	NJ2212GK	EMBRACO	1.7	34.37	LBP	CSR	945	1333 1775 2273
SEQ617	191.35€	NEK2150GK	EMBRACO	5/8	12.12	LBP	CSIR	445	570 716 888
SEQ902	175.39€	NT6222GK	EMBRACO	3/4	17.40	HMBP	CSR	1280	1590 1930 2308
SEQ609	221.62€	NJ2192GK	EMBRACO	1.2	26.00	LBP	CSR	752	1120 1345 1725
VNQ6902	198.45€	NT6226GK	EMBRACO	1	22.40	HMBP	CSR	1744	2144 2598 3095
VNQ6916	223.47€	NJ9232GK	EMBRACO	1.2	26.20	HMBP	CSR	1953	2458 3182 4070
SEQ674	256.69€	CAJ2432Z	UNITE HERMETIQUE	3/4	18.30	LBP	CSR	510	792 865 1560
CYQ6239	276.42€	CAJ2446Z	UNITE HERMETIQUE	1.2	26.10	LBP	CSR	797	1194 1423 2290

CYQ6236	287.60€	CAJ2428Z	UNITE HERMETIQUE	5/8	15.20	LBP	CSR	394	628 762 1261
IQ1517	307.80€	CAJ9480Z	UNITE HERMETIQUE	5/8	15.20	HMBP	CSR	1009	1284 1607 2172
SEQ990	354.18€	CAJ4517Z	UNITE HERMETIQUE	1.2	25.90	HMBP	CSR	1776	2273 2857 3860
SEQ999	284.58€	CAJ9510Z	UNITE HERMETIQUE	1	18.30	HMBP	CSR	1252	1583 1972 2650
ZNEQ6572	360.83€	CAJ2464Z	UNITE HERMETIQUE	1.5	34.40	LBP	CSR	1076	1605 1902 3012
VASQ6285	348.56€	NJ9238GK	EMBRACO	1.5	32.70	HMBP	CSR	2485	2956 3509 4563
SEQ601	367.83€	NT6220GK	EMBRACO	5/8	14.50	HMBP	CSR	1126	1395 1700
SEQ921	394.30€	CAJ9513Z	UNITE HERMETIQUE	1.1	24.20	HMBP	CSR	1501	1955 2485 3406
VASQ7698	392.13€	CAJ4519Z	UNITE HERMETIQUE	1.5	34.40	HMBP	CSR	2353	3009 3756 5030
ZRQ7716	441.16€	CAJ2440Z	UNITE HERMETIQUE	1	22.80	LBP	CSR	647	945 1166 1876

HMP: Haute moyenne pression

HP: Haute pression

LBP: Basse pression

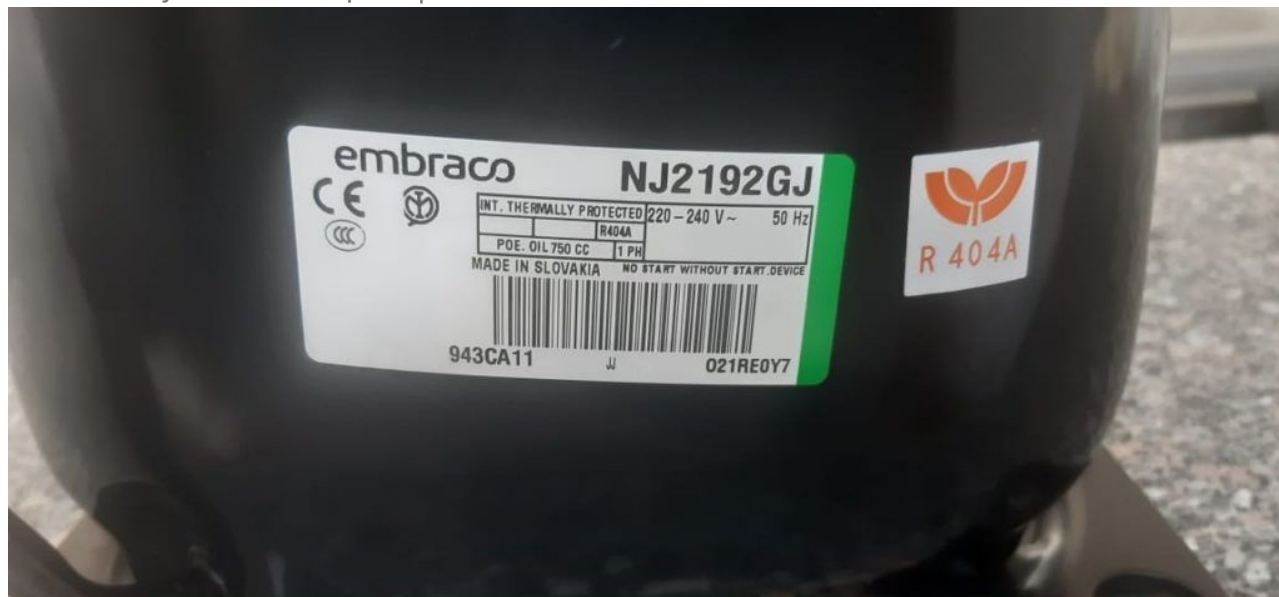
## FREON R404a/R507 220-240V 50HZ

CODE	TYPE	MARQUE	PUISSANCE HP	CYLINDREE CM3	PRESSION	schema electrique	capacité frigorifique en watt			
							-10°	-5°	0	+5°
FRD161	EMT6144GK	EMBRACO	1/5	3,97	HMBP	CSIR	360	438	530	630
ITD1112	EMT6152GK	EMBRACO	1/4L	4,5	HMBP	CSIR	396	483	582	695
INFD1721	NEK6144GK	EMBRACO	1/4L	4,52	HMBP	CSIR	368	451	549	660
SCD1726	NEK6165GK	EMBRACO	1/4	6,2	HMBP	CSIR	520	626	751	895
FRD153	NEK6181GK	EMBRACO	1/3	7,28	HMBP	CSIR	565	689	836	1006
FRD145	NEK6210GK	EMBRACO	3/8	8,78	HMBP	CSIR	669	821	999	1205
FRD258	NEK6213GK	EMBRACO	1/2	12,12	HMBP	CSIR	919	1120	1350	1610
SDD1004	NEK6217GK	EMBRACO	5/8	14,3	HMBP	CSR	1120	1360	1630	1932
FRD156	NT6220GK	EMBRACO	5/8	14,5	HMBP	CSR	1126	1395	1700	
FRD457	NT6222GK	EMBRACO	3/4	17,4	HMBP	CSR	1280	1590	1930	2308
IAD1457	NT6226GK	EMBRACO	1	22,4	HMBP	CSR	1744	2144	2598	3095
IAD1461	NJ9232GK	EMBRACO	1,2	26,2	HMBP	CSR	1953	2458	3182	4070
INFD1730	NJ9238GK	EMBRACO	1,5	32,7	HMBP	CSR	2485	2956	3509	4563
IAD1432	NEK2125GK	EMBRACO	1/4	6,2	LBP	CSIR	243	314	398	494
FRD162	NEK2150GK	EMBRACO	5/8	12,12	LBP	CSIR	445	570	716	888
PLD1812	NEK2168GK	EMBRACO	5/8	14,3	LBP	CSR	500	650	828	1030
SDD1019	NT2178GK	EMBRACO	3/4	17,4	LBP	CSR	544	735	956	1206
FRLD4079	NT2180GK	EMBRACO	1	20,4	LBP	CSR	648	856	1100	1380
INFD1712	NT2192GK	EMBRACO	1,1	22,4	LBP	CSR	754	998	1280	1598
FRD154	NJ2192GK	EMBRACO	1,2	26	LBP	CSR	752	1120	1345	1725
FRD467	NJ2212GK	EMBRACO	1,7	34,37	LBP	CSR	945	1333	1775	2273
FRD254	AEZ4425Z	UNITE HERMETIQUE	1/5	4,5	HMBP	CSIR	263	341	432	587
FRD697	AE4430Z	UNITE HERMETIQUE	1/4	5,2	HMBP	CSIR				
ICD6081	AE4440Z	UNITE HERMETIQUE	1/3	6,7	HMBP	CSIR				
ITD1121	AE4450Z	UNITE HERMETIQUE	3/8	8,8	HMBP	CSIR				
ITD1122	AE4470Z	UNITE HERMETIQUE	1/2	12	HMBP	CSIR				
VD6062	CAJ9480Z	UNITE HERMETIQUE	5/8	15,2	HMBP	CSR	1009	1284	1607	2172
FRD444	CAJ9510Z	UNITE HERMETIQUE	1	18,3	HMBP	CSR	1252	1583	1972	2650
FRD476	CAJ9513Z	UNITE HERMETIQUE	1,1	24,2	HMBP	CSR	1501	1955	2485	3406
FRD445	CAJ4517Z	UNITE HERMETIQUE	1,2	25,9	HMBP	CSR	1776	2273	2857	3860
INFD2143	CAJ4519Z	UNITE HERMETIQUE	1,5	34,4	HMBP	CSR	2353	3009	3756	5030
BTD2320	AE2420Z	UNITE HERMETIQUE	1/2	12,6	LBP	CSIR	357	547	654	1047
PLD1781	CAJ2428Z	UNITE HERMETIQUE	5/8	15,2	LBP	CSR	394	628	762	1261
FRD129	CAJ2432Z	UNITE HERMETIQUE	3/4	18,3	LBP	CSR	510	792	865	1560
MED2261	CAJ2440Z	UNITE HERMETIQUE	1	22,8	LBP	CSR	647	945	1166	1876
PLD1784	CAJ2446Z	UNITE HERMETIQUE	1,2	26,1	LBP	CSR	797	1194	1423	2290
MARD1027	CAJ2464Z	UNITE HERMETIQUE	1,5	34,4	LBP	CSR	1076	1605	1902	3012

# COMPRESSOR, ASPERA, NJ2192GK, 1.1/4 HP, 220V, 1PH, R404A, LBP, 1199w

Category: compressor

written by www.mbsm.pro | 19 December 2021



Private Picture Copyright: WWW.MBSM.PRO

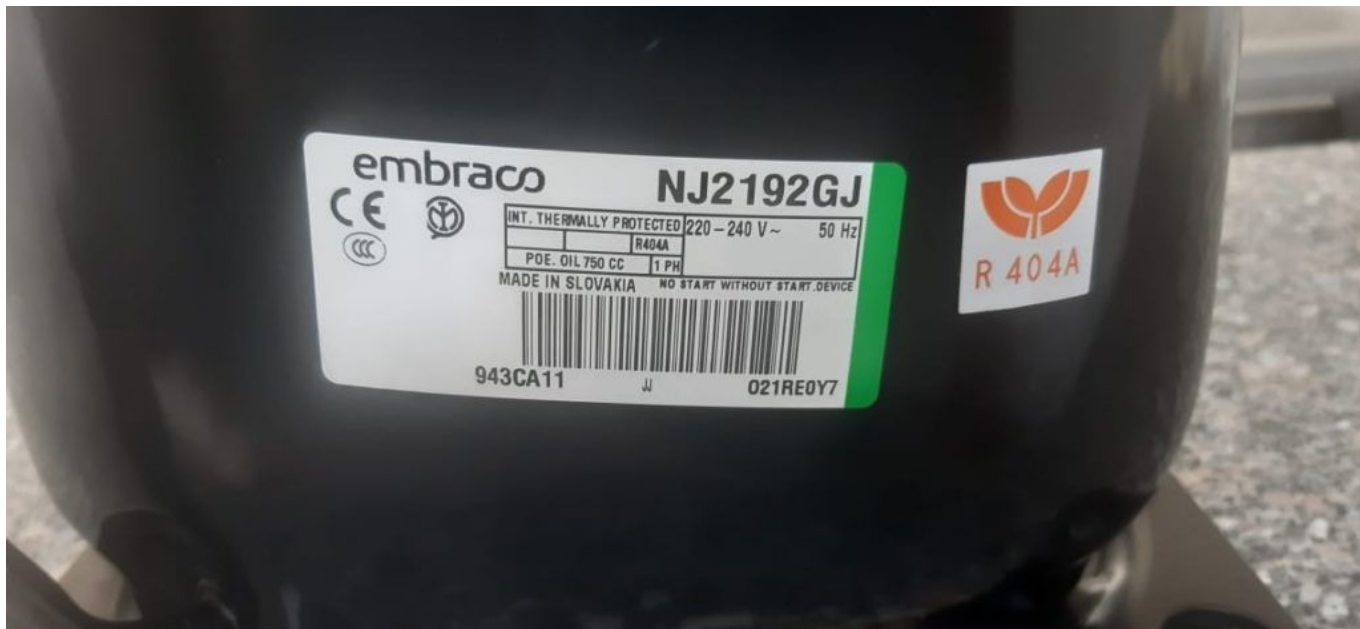
**Compressor ASPERA NJ2192GJ | NJ 2192 GJ**

**Product replaced the old model NJ2192GK**

Refrigerant	R404A
Working range[stC] <b>LBP</b>	-40 do -10
Nominal capacity [W] (evaporating temperature -23,3C, Condensing temperatur +54,4C)	1199
Power supply	220-240V 50Hz
Engine type	CSR
Displacement [cm <sup>3</sup> ]	26,10
Weight [kg]	22
Condensing temperature +55 C	

Evaporating Temperature °C	Cooling Capacity +/-5%			Power Consumption +/-5%	Current Consumption +/-5%
	(kcal/h)	(W)	(Btu/h)	(W)	(A)
-40					
-35					
-30		797		773	4,37
-25		1084		908	4,92
-20		1413		1045	5,49
-15		1784		1181	6,10
-10		2196		1317	6,72

Refrigerant: R404A



Private Picture Copyright : [WWW.MBSM.PRO](http://WWW.MBSM.PRO)

Mbsm\_dot\_pro\_private\_PDF\_pdf\_NJ219GJTélécharger

---

## Compresseur, Mitsubishi, Electric MITSUBISHI, RH174VHAC, 9000 BTU/heure (2,6 kW), 220-240V 50Hz, R22

Category: compressor

written by [www.mbsm.pro](http://www.mbsm.pro) | 19 December 2021



Private Picture Copyright: WWW.MBSM.PRO

Modèle – Mitsubishi Electric RH 174 VHAC (9000Btu)

Productivité – 9000 BTU/heure (2,6 kW)

Alimentation – 220-240V 50Hz

Réfrigérant (fréon) – R22

Entre vannes – 15 cm

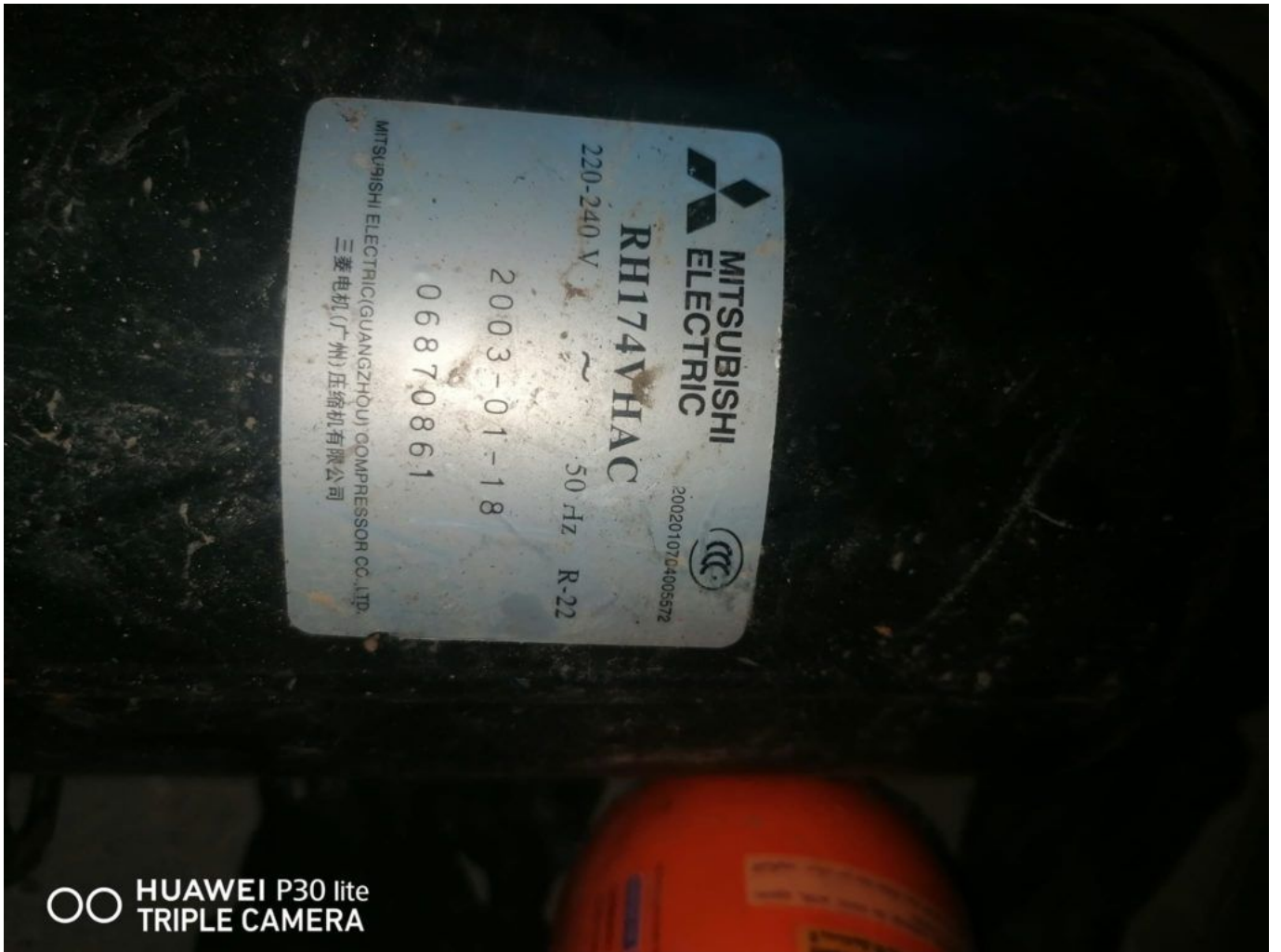
Hauteur compresseur – 22 cm

Diamètre compresseur – 13 cm

#mbsmpro

Mbsm\_dot\_pro\_private\_PDF\_pdf\_RH174VHACTélécharger

Mbsm\_dot\_pro\_private\_picture\_RH174VHACTélécharger



Private Picture Copyright: WWW.MBSM.PRO

mbsm.pro, Refrigeration, Compressor,  
GFF57AA, SEBERIA, Hermetic,  
Compressor GFF57AA, LBP, R134a,  
Disp.5.7cc, 1/5HP, Series, LBP

Category: compressor

written by www.mbsm.pro | 19 December 2021



Private Picture Copyright : WWW.MBSM.PRO

mbsm.pro, Refrigeration, Compressor, GFF57AA, SEBERIA, Hermetic, Compressor GFF57AA, LBP, R134a, Disp.5.7cc, 1/5HP, Series, LBP

## COMPRESSOR, EMBRACO, 1/4 HP++ (big), 220V, R134A, EGAS 80HLR, FREEZER MOTOR

Category: compressor

written by www.mbsm.pro | 19 December 2021

### Technical Specifications

Brand	Embraco
Production place	Brazil
Compressor Type	Hermetic Piston
Compression Line	1/4 "
Working Regime	LBP (-23,3 °C / + 54,4 °C)
Frequency (Hz)	50-60
Suction Line	5/16 "
Cooling Capacity (Watts)	195
good kodu	51370117399RA
Compressor Model	EGAS80HLR
Piston Diameter (cm3/rev)	6.36
Tipi Motorcycle	1FAZ - RSIR
Refrigerant Gas	R134a
Compressor Power(Hp)	1/4 +



Private Picture Copyright : WWW.MBSM.PRO

#mbsmpro

## TECHNICAL SPECIFICATIONS

- Voltage: 220V 50 / 60Hz
- Refrigerant: R-134A

- Evaporation temperature range: -35 ° C to -10 ° C
- Power: 1/4 +

Mbsm\_dot\_pro\_private\_PDF\_pdf\_embraco-compressor-egas-80-hlrTélécharger

### Technical Specifications

Brand	Embraco
Production place	Brazil
Compressor Type	Hermetic Piston
Compression Line	1/4 "
Working Regime	LBP (-23,3 ° C / + 54,4 ° C)
Frequency (Hz)	50-60
Suction Line	5/16 "
Cooling Capacity (Watts)	195
good kodu	51370117399RA
Compressor Model	EGAS80HLR
Piston Diameter (cm3/rev)	6.36
Tipi Motorcycle	1 FAZ - RSIR
Refrigerant Gas	R134a
Compressor Power(Hp)	1/4 +



Private Picture Copyright : WWW.MBSM.PRO



Private Picture Copyright : WWW.MBSM.PRO

Compressor, Embraco, EMX20CLC, High-quality, compressor Aspera, EMX20CLC, LBP R600a, 220-240V 50Hz, 3.97 cm3, 1/12HP

Category: compressor

written by www.mbsm.pro | 19 December 2021

Model **EMX20CLC**

Code 513309529...S

**embraco** POWER IN.  
CHANGE ON.

220V 60 1~



#### MECHANICAL DATA

**Bore:** 19 mm  
**Stroke:** 14 mm  
**Oil Charge:** 180ml  
**Oil Type Configuration:** ALQUILB  
**Oil Type Viscosity:** ISO5  
**Weight:** 7.88 kg

#### GENERAL DATA

**Application:** LBP  
**Refrigerant:** R600a  
**Evaporating Temperature Range:** -35°C to -10°C  
**Compressor Cooling:** Static  
**Type:** Hermetic reciprocating  
**Technology Type:** On-Off  
**Expansion Device:** Capillary Tube  
**Packing Quantity:** 100  
**Displacement:** 3.97 cm<sup>3</sup>  
**Horse power:** 1/12 hp  
**Approvals:**

#### ELECTRICAL DATA

**Motor Type:** RSCR  
**Starting Torque:** LST  
**Voltage working range at 50 Hz:** 198-242 V  
**Voltage working range at 60 Hz:** 198-242 V  
**Maximum Motor Temperature:** 130 °C  
**Start Winding Resistance:** 22.1 Ω (± 10%) at 25°C  
**Run Winding Resistance:** 50.65 Ω (± 10%) at 25°C



Private Picture Copyright : [WWW.MBSM.PRO](http://WWW.MBSM.PRO)

#### GENERAL DATA

Application: LBP  
Refrigerant: R600a  
Evaporating Temperature Range: -35°C to -10°C  
Compressor Cooling: Static  
Type: Hermetic reciprocating  
Technology Type: On-Off  
Expansion Device: Capillary Tube  
Packing Quantity: 100  
Displacement: 3.97 cm<sup>3</sup>  
Horse power: 1/12 hp  
Approvals:

#### MECHANICAL DATA

Bore: 19 mm  
Stroke: 14 mm  
Oil Charge: 180ml  
Oil Type Configuration: ALQUILB  
Oil Type Viscosity: ISO5  
Weight: 7.88 kg

#### ELECTRICAL DATA

Motor Type: RSCR  
Starting Torque: LST  
Voltage working range at 50 Hz: 198-242 V  
Voltage working range at 60 Hz: 198-242 V  
Maximum Motor Temperature: 130 °C  
Start Winding Resistance: 22.1 Ω (± 10%) at 25°C  
Run Winding Resistance: 50.65 Ω (± 10%) at 25°C

Model **EMX20CLC**

Code 513309529...S

**embraco** POWER IN.  
CHANGE ON.

220V 60 1~



#### GENERAL DATA

Application: LBP  
Refrigerant: R600a  
Evaporating Temperature Range: -35°C to -10°C  
Compressor Cooling: Static  
Type: Hermetic reciprocating  
Technology Type: On-Off  
Expansion Device: Capillary Tube  
Packing Quantity: 100  
Displacement: 3.97 cm<sup>3</sup>  
Horse power: 1/12 hp  
Approvals:



#### MECHANICAL DATA

Bore: 19 mm  
Stroke: 14 mm  
Oil Charge: 180ml  
Oil Type Configuration: ALQUILB  
Oil Type Viscosity: ISO5  
Weight: 7.88 kg

#### ELECTRICAL DATA

Motor Type: RSCR  
Starting Torque: LST  
Voltage working range at 50 Hz: 198-242 V  
Voltage working range at 60 Hz: 198-242 V  
Maximum Motor Temperature: 130 °C  
Start Winding Resistance: 22.1 Ω (± 10%) at 25°C  
Run Winding Resistance: 50.65 Ω (± 10%) at 25°C

Private Picture Copyright: WWW.MBSM.PRO



Private Picture Copyright: WWW.MBSM.PRO

Mbsm\_dot\_pro\_private\_PDF\_EMX20CLC\_techTélécharger

Bitzer, Compressor, S6F-30.2Y-40P,  
Compressor Selection, Semi-hermetic  
Reciprocating, 1450 min-1 , 101,1

# (LP) , 30hp

Category: compressor

written by [www.mbsm.pro](http://www.mbsm.pro) | 19 December 2021



Type S6F-30.2Y-40P

S.No. 1600308267

BITZER KÜHLMASCHINENBAU GMBH  
Made in Germany



Nominal Voltage V 3Ph~	Frequ. Hz	Operat. C. A (max)	Locked Rotor C.		Displacem. m³/h	Speed RPM
			A (Y)	A (YY)		
380-420	50	51	135	220	101,4	1450
440-480	60	51	135	220	122	1750

IP 54 LP/HP max. 19 / 28 bar



BITZER is raising the bar in terms of technology and capacity for expanded low temperature applications with the 2nd generation of 2-stage compressors. This series is the result of extensive research on the basis of years of experience in the construction of highly efficient and solid reciprocating compressors. The gas flow control and working valves are specially adapted for low temperature applications.

- Displacement at 1450 min<sup>-1</sup> : 101,1 (LP) 50,5 (HP)
- Number of cylinders : 6
- Oilcharge : 4,75 dm<sup>3</sup>

Displacement (1450 RPM 50Hz):101.10 / 50.50 m<sup>3</sup>/h Displacement (1750 RPM 60Hz):122.02 / 60.95 m<sup>3</sup>/h

The Bitzer Compressor is high quality!

Displacement (1450 RPM 50Hz):101.10 / 50.50 m<sup>3</sup>/h

Displacement (1750 RPM 60Hz):122.02 / 60.95 m<sup>3</sup>/h

No. of cylinder x bore LP/HP x stroke:6+6 x 82/ 82 mm x 55 mm

Max. pressure (LP/MP/HP):19 / 19 / 28 bar

Connection suction line:42 mm – 1 5/8 inch

Connection discharge line:35 mm – 1 3/8 inch

Oil type R404A/R507A:BSE32 (Standard)

Oil type R448A/R449A:BSE32 (Standard)

Oil type R22:B5.2 (Option) We can also provide the following models

4JTE-15K

GYD80485VAYB4

GED60235VLB332

GMD60137VBYR632

GED60485VBYR3-1

CSH7573-70Y-40P

GYD80182VLYB632

GYD60385VLYR2-2

GED80154VLR332

GYU80295VLR4-2

GSU60120VLB6-2

GED60137VAYB3-1

GUU60154VLR532

GUD80295VLR232

GSD80295VLR6-1

GTU60137VLYB3-1

GUD60137VBYR5-1

GYD80235VBYB332

GYD60421VAYR332

GMD60295VBR3-1

GED80154VBYB6

4NEH-14-40S

GMU60154VLY

GYD60154VAB4-2

GYD80182VAYR4-2

GYD80421VBR5-1

GYD60385VLYR4-1

4TE-9.F3Y-40S

GMD60182VBYB3-2

GMD80120VLR232  
 GUD60120VBYR5-2  
 GSD60154VAYR232  
 GMD60154VBYR632  
 44EES-12-40S  
 GMD60154VBB432  
 GUD80421VWR4-2  
 GYD80385VAYR2-2  
 GTD60385VLB632  
 GED60235VLB2  
 GED60154VAYR4  
 GSD80421VWR5-2  
 GUD60421VBR5  
 GYD80182VBYB5-1  
 GED60295VBB5  
 GED80421VAR4-1  
 GED60385VLYB3  
 GYU80421VLR2  
 GSD80485VBB5-1  
 GED60120VLB2  
 GUD60421VBR332  
 GTD60154VAB4-2  
 GED60421VAYB6-1  
 GMD60485VBB5-1  
 GSD60485VAYR4  
 GED80295VLYR6-1  
 GSD60235VAYB232  
 GTD60385VBYR3-1  
 GUD60154VBB3-2  
 GUD80295VWB6-2  
 GED60421VAR5  
 GMD80421VBR4  
 GED80182VLR532  
 GSD60154VBYB6-1  
 GTD80421VBYR332  
 GSD60182VAYB4-1  
 GUD80485VWYR5-2  
 GSU80295VLYR6-1  
 GSD80182VLYR2-2  
 GSU80385VLB432  
 GED80295VAY  
 GED80295VAB3-2  
 GYD60120VAR4

## With liquid subcooling 50Hz (R404A/R507A)

Compressor type	Cond. temp. [°C]	Q <sub>o</sub> / Pe	Evaporating temperature °C									
			-25	-30	-35	-40	-45	-50	-55	-60	-65	-70
S6F-30.2Y	30	Q <sub>o</sub>	43400	37400	31750	26500	21700	17420	13690	10540	7920	5800

Pe	2,53	0,65	8,78	16,94	15,15	13,42	11,77	10,20	8,74	7,40	
35	Qo	42500	36600	31050	25900	21200	17030	13420	10340	7780	5680
Pe	3,85	1,86	9,89	7,94	6,04	4,21	12,45	10,78	9,23	7,80	
40	Qo	41500	35700	30300	25300	20700	16680	13170	10150	7590	
Pe	25,20	23,10	21,01	18,96	16,95	15,00	13,14	11,37	9,72		
45	Qo	40450	34800	29550	24700	20300	1660	12930	9920		
Pe	26,59	24,37	22,16	19,98	17,86	15,80	13,83	11,96			
50	Qo	39500	34000	28850	24100	19870	16060	12650			
Pe	28,07	25,69	23,33	21,01	18,75	6,57	14,49				
55	Qo	38800	33250	28200	23600	19490	15740				
Pe	29,64	27,06	24,51	22,03	19,63	17,32					

Qo – Cooling capacity [Watt], Pe – Power consumption [kW]

## Without liquid subcooling 50Hz (R404A/R507A)

Compressor type	Cond. temp. [°C]	Qo / Pe		Evaporating temperature °C								
		-25	-30	-35	-40	-45	-50	-55	-60	-65	-70	
S6F-30.2Y	30	Qo	38050	31700	26050	21000	16620	12880	9790	7280	5300	3760
Pe	1,26	18,81	16,61	14,64	12,90	11,37	10,02	8,86	7,85	7,00		
35	Qo	36000	29950	24500	19710	15570	12070	9180	6840	4980	3510	
Pe	22,11	19,66	17,41	15,37	13,53	11,88	10,42	9,13	8,02	5,72		
40	Qo	33800	28000	22900	18390	14530	11280	8590	6400	4620		
Pe	22,95	20,53	18,26	16,15	14,20	12,42	10,82	9,41	8,18			
45	Qo	31450	26050	21250	17080	13510	10500	8000	5920			
Pe	23,82	21,42	19,12	16,94	14,89	13,00	11,26	9,71				
50	Qo	28950	24000	19590	15770	12490	9710	7370				
Pe	24,72	22,31	19,98	17,74	15,61	13,61	11,76					
55	Qo	26400	21900	17890	14430	11440	8880					
Pe	25,67	23,19	20,80	18,52	16,34	14,27						

Qo – Cooling capacity [Watt], Pe – Power consumption [kW]





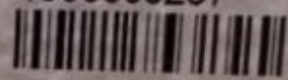




Type S6F-30.2Y-40P

S.No. 1600308267

BITZER KÜHLMASCHINENBAU GMBH  
Made in Germany



Nominal Voltage V 3Ph~	Frequ. Hz	Operat. C. A (max.)	Locked Rotor C.		Displacem. m³/h	Speed RPM
			A (Y)	A (YY)		
380-420	50	51	135	220	101,4	1450
440-480	60	51	135	220	122	1750

IP 54 LP/HP max. 19 / 28 bar





Private Picture Copyright : [WWW.MBSM.PRO](http://WWW.MBSM.PRO)

Mbsm\_dot\_pro\_private\_PDF\_S6F-30.2Y-40PTélécharger

Compressor type Displacement at 1450 min-1 Number of cylinders Oil charge Weight Pipe connections Motor Max. operating current Max. power consumption Starting

current(lockedrotor)LPHPDLSLdm3KgmpouceAmpkW  
Y/YS6F-30.2Y101,150,567.752343513/842  
5415/8  
21/8380 ..420YY/3/50  
440 ..480 YY/3/605131,9135/220

---

## Panasonic, DGH73C14RAX, R134a, D Series, Reciprocating, Fixed, Speed, LBP, 1/4Hp

Category: compressor  
written by [www.mbsm.pro](http://www.mbsm.pro) | 19 December 2021



Private Picture Copyright: [WWW.MBSM.PRO](http://WWW.MBSM.PRO)

[https://www.mbsm.pro/wp-content/uploads/2021/01/Mbsm\\_dot\\_pro\\_private\\_PDF\\_Qb77c16glx5.pdf](https://www.mbsm.pro/wp-content/uploads/2021/01/Mbsm_dot_pro_private_PDF_Qb77c16glx5.pdf)

Item	Performance characteristics
Refrigerant	R134a
Displacement (cm <sup>3</sup> )	7.3

<b>Item</b>	<b>Performance characteristics</b>
Voltage (V)	220
Frequency (Hz)	50
Motor Type	RSCR
Capacity@ASHRAE	215
COP@ASHRAE	1.6
Capacity@CECOMAF	—
COP@CECOMAF	—



DGH	DGH57C79RAU	5.7	115V 60Hz	RSCR	215	1.38	-	-
				RSIR	-	-	-	-
	DGH66C12RAR	6.6	110/127V 60Hz	RSCR	212	1.63	-	-
				RSIR	-	-	-	-
	DGH66C13GAX	6.6	220V 50Hz	RSCR	251 / 251	1.62 / 1.60	-	-
				RSIR	189	1.42	-	-
	DGH66C15RLP	6.6	220V 60Hz	RSCR	-	-	-	-
				RSIR	251	1.45	-	-
	DGH66C16RAP	6.6	220V 60Hz	RSCR	-	-	-	-
				RSIR	251	1.60	-	-
	DGH66C94RAU	6.6	115V 60Hz	RSCR	-	-	-	-
				RSIR	238	1.68	-	-
	DGH66C96RAW	6.6	220/240V 50Hz	RSCR	-	-	-	-
				RSIR	190 / 190	1.60 / 1.56	-	-
	DGH73C14RAE	7.3	220V 50/60Hz	RSCR	-	-	-	-
				RSIR	215 / 270	1.55 / 1.60	-	-
DGH73C15GAX	7.3	220V 50Hz	RSCR	215	1.45	-	-	
			RSIR	-	-	-	-	
DGH73C15RAX	7.3	220V 50Hz	RSCR	-	-	-	-	
			RSIR	215	1.60	-	-	
DGH73C13RAW	7.3	220/240V 50Hz	RSIR	-	-	-	-	

Private Picture Copyright: WWW.MBSM.PRO

Mbsm\_dot\_pro\_private\_PDF\_panasonic-compressor-Serie-DTélécharger

KONOR, COMPRESSOR, GQR80AA, R134A, LBP, 240V, 50Hz, 8.1cm<sup>3</sup>, 1/4HP, 198W, -KONOR CATALOGE pdf

Category: compressor

written by www.mbsm.pro | 19 December 2021



Private Picture Copyright: WWW.MBSM.PRO

GQR80AA 8.1cm<sup>3</sup> 186MM RSIR 198W 1.19W/W 220-240V/50Hz 1/4HP 9.4Kg

KONOR COMPRESSOR GQR80AA R134A LBP 240V 50Hz

Product description:

R134a GQR80AA series sealed refrigeration compressor 220-240v/50Hz

The main feature:

- strong loading capacity,
- high efficiency,
- low noise,
- light vibration,
- good reliability.

suitable for mid-size refrigerators, freezers, displayers, beer displayers and other mid-size refrigeration appliances. The structure form is hermetical crank connecting-rod reciprocating piston type.

They are the best selling high-tech compressors sold in the world. They are ideal for domestic refrigeration and also for small commercial applications. They are small, have low noise and vibration levels, they achieve the highest levels of efficiency available in the market for this category.

KONOR	Displ.	power	Motor type	V/Hz	Cooling capacity	W <sup>Net</sup>	Weight	KG
GQR60AA	61/6		RSIR	220-240V/50Hz		140		9.4
GQR70AA	6.61/5		RSIR	220-240V/50Hz		165		9.4
GQR80AA	8.11/4		RSIR	220-240V/50Hz		198		9.4
GQR90AA	9.11/4		RSIR	220-240V/50Hz		220		10.1
GQY99AA	9.91/4		RSIR	220-240V/50Hz		270		10.9
GQY12AF	11.81/3		CSIR	220-240V/50Hz		325		10.56
GQY16AF	16.23/8		CSIR	220-240V/50Hz		380		12.1
GP16MG	16.25/8		CSIR	220-240V/50Hz		870		12.5
GP12MG	11.85/8		CSIR	220-240V/50Hz		656		10.9
GP12TG	11.83/8		CSIR	220-240V/50Hz		1140		11.8
GQR80TG	8.11/4		CSIR	220-240V/50Hz		730		9.8
GQR90TG	9.11/4		CSIR	220-240V/50Hz		830		10.5
GQR60TG	61/5		CSIR	220-240V/50Hz		520		9.8

One year warranty\*.

Mbsm\_dot\_pro\_private\_PDF\_2017-KONOR-CATALOGETélécharger



KONOR Compressor GQR80AA

Heating & Refrigerating  
**SIKELAN**

**GQR80TG**

220-240V ~ 50/60Hz 1PH

**R134a**



NET CAPACITY: 400W

17.08.2018

Zhejiang Waidi Refrigeration Technology Co., LTD.

Suct