

ELECTROLUX, CUBIGEL, Compresseur, GL90TB, R-134a, 1 / 4HP++ (big), 230V, RSCR, HMBP

Category: compressor

written by www.mbsm.pro | 25 December 2020



Private Picture Copyright : WWW.MBSM.PRO

 **Electrolux**
COMPRESSORS

GL90BH 03011
220 - 240 V ~ 50 Hz

R134a



 7625
0008146

Compressor ELECTROLUX \ CUBIGEL GL90TB

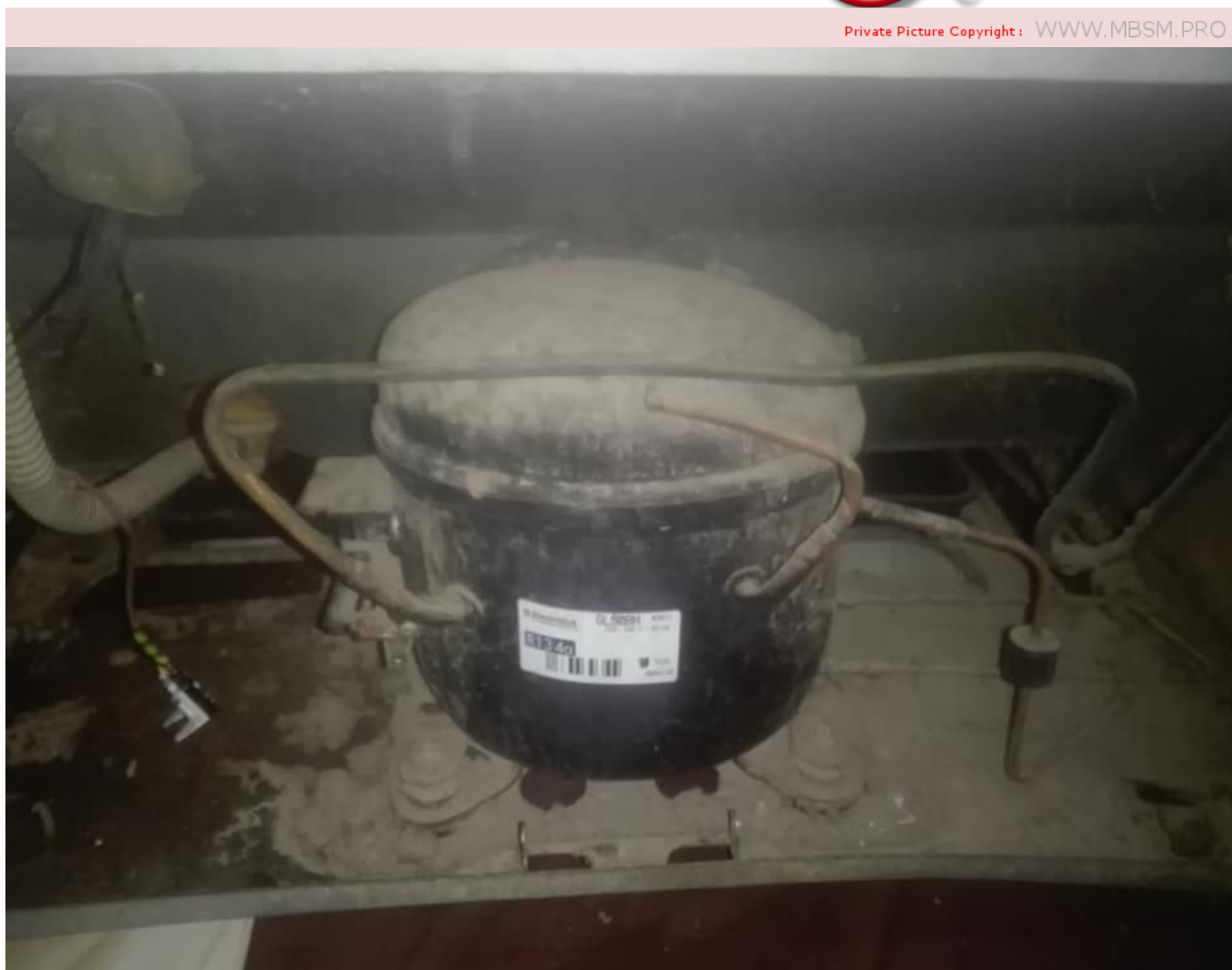
Substitutes for this compressor are: [Aspera NEK6170Z](#) , Danfoss/Secop FR10G , L'Unite Hermetique/Tecumseh AE4430Y

Refrigerant	R134A
Working range [C]	-25 to +10
Power supply	220V 50Hz
Engine type	CSIR
Power [HP]	1/4
Cylinder capacity [cm³]	8,9
Weight [kg]	10,8

Refrigerant: R134A



Private Picture Copyright : WWW.MBSM.PRO



Private Picture Copyright : WWW.MBSM.PRO

Type: Compresseurs à pistons hermétiques

Producteur: ACC

Série: HMBP

Modèle: GL90BH

Données GENERALES

Réfrigérant: R134a
Élément de décharge: C
Refroidissement: 0C
Température ambiante maximale [°C]: 43

Données du compresseur

Cylindrée [cm³]: 9,1
Déplacement [m³ / h]: 1,6
Poids [kg]: 11,1
Charge d'huile [cm³]: 470
Type d'huile: ISO VG 19 ESTER

Données du moteur

Type de moteur: RSCR
Puissance [KM]: 1/4
Élément de départ: LST
Source de courant: 220V 50Hz
Gamme de tension: 187-264
Courant rotor bloqué [A]: 13,8
Résistance d'enroulement en marche (25 ° C) [Ω]: 8,97
Résistance d'enroulement de démarrage (25 ° C) [Ω]: 18,05

Données électriques

Relais: 3003
Élément de blindage:
Volume du condensateur de démarrage [µF]: 6/400

Connexions

	millimètres	pouces
Le tube d'aspiration:	6,5	
Tube de service:	6,5	
Tube de décharge:	4,9	
Tube de refroidisseur d'huile:		4,9

[Mbsm_dot_pro_private_PDF_Cubigel_Brochure_-320102MTélécharger](#)

[Mbsm_dot_pro_private_PDF_compresseur-acc-cubigell-gl90tbTélécharger](#)

Capacité de refroidissement [W]

t _c \ t _e	-35	-30	-25	-20	-15	-dix
40	114	162	218	282	355	435
45	104	148	200	261	330	407
50	93	134	183	240	305	379
55	82	119	165	219	281	351

60 72 105 147 198 256 323

Puissance absorbée [W]

$t_c \setminus t_e$	-35	-30	-25	-20	-15	-dix
40	123	145	167	189	212	235
45	122	145	168	192	216	240
50	121	145	170	195	220	245
55	120	145	171	197	223	250
60	119	146	173	200	227	255

Actuel [A]

$t_c \setminus t_e$	-35	-30	-25	-20	-15	-dix
40	0,64	0,75	0,85	0,95	1,05	1,14
45	0,63	0,74	0,86	0,96	1,06	1,16
50	0,62	0,74	0,86	0,97	1,08	1,18
55	0,61	0,74	0,86	0,98	1,09	1,20
60	0,60	0,73	0,86	0,99	1,10	1,22

Débit massique [kg / s]

$t_c \setminus t_e$	-35	-30	-25	-20	-15	-dix
40	0,55	0,85	1,23	1,68	2,20	2,80
45	0,48	0,77	1,14	1,58	2,09	2,67
50	0,41	0,69	1,04	1,47	1,97	2,54
55	0,34	0,61	0,95	1,36	1,85	2,41
60	0,27	0,52	0,86	1,26	1,73	2,28

COP [W / W]

$t_c \setminus t_e$	-35	-30	-25	-20	-15	-dix
40	0,93	1,12	1,31	1,49	1,67	1,85
45	0,85	1,02	1,19	1,36	1,53	1,70
50	0,77	0,92	1,08	1,23	1,39	1,55
55	0,69	0,82	0,96	1,11	1,26	1,40
60	0,60	0,72	0,85	0,99	1,13	1,26

Conditions de fonctionnement: ASHRAE

t_c – Température de condensation [°C]

t_e – Température d'évaporation [°C]

[Mbsm_dot_pro_private_PDFGL90BHTélécharger](#)

[Mbsm_dot_pro_private_PDF__GL90BHTélécharger](#)

[Mbsm_dot_pro_private_PDF_danfoss_GL90TG_R134a_230_60](#)

GMCC, PE50h1f-9, Compressor, RSCR,

220V-240V-50hz, R134A, LBP, 153W, 1/5HP

Category: compressor

written by www.mbsm.pro | 25 December 2020

E	PE35E1F-9	3.5	ST	RSCR	220V-50Hz	95	1.50	CB	AI	174
	PE40E1H-9	4.0	ST	RSCR	220V-50Hz	115	1.40	----	AI	175
	PE45E1F-9	4.5	ST	RSCR	220V-50Hz	120	1.50	----	AI	175
	PE90E1H-9	5.0	ST	RSCR	220V-50Hz	136	1.40	----	AI	175
	SE25E1R-9	2.5	ST	RSIR	220V-50Hz	55	1.00	----	AI	165
	SE30E1M-9	3.0	ST	RSIR	220V-50Hz	75	1.15	CB	AI	165
	SE35E1M-9	3.5	ST	RSIR	220V-50Hz	95	1.30	----	AI	165
	SE40E1H-9	4.0	ST	RSIR	220V-50Hz	108	1.35	CB	AI	174
	SE40E1K-9	4.0	ST	RSIR	220V-50Hz	108	1.25	CB	AI	165
	SE45E1J-9	4.5	ST	RSIR	220V-50Hz	120	1.35	CB	AI	174
SE90E1H-9	5.9	ST	RSIR	220V-50Hz	160	1.38	----	AI	174	
H	PE40H1C-9	4.0	ST	RSCR	220V-50Hz	110	1.65	----	AI	178
	PE45H1F-9	4.5	ST	RSCR	220V-50Hz	130	1.50	CB	AI	178
	PE50H1C-9	5.0	ST	RSCR	220V-50Hz	153	1.63	CB	AI	178
	PE50H1F-9	5.0	ST	RSCR	220V-50Hz	153	1.50	----	AI	178
	PE55H1D-9	5.5	ST	RSCR	220V-50Hz	170	1.60	----	AI	178
	PE55H1F-9	5.5	ST	RSCR	220V-50Hz	163	1.55	CB	AI	178
	PE65H1C-9	6.5	ST	RSCR	220V-50Hz	190	1.65	----	AI	178





GMCC

THERMALLY
PROTECTED
R134a

PE50H1F-9

220V-240V~50Hz, 1Ph

RoHS



612000531B4SVL1LMD

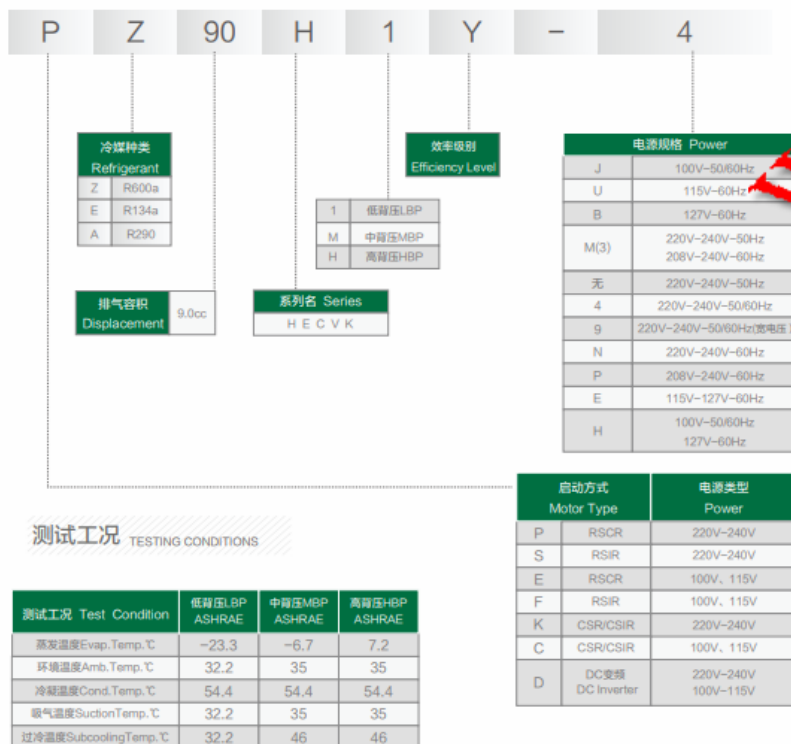


ANHUI MEIZHI COMPRESSOR CO., LTD

E	PE35E1F-9	3.5	ST	RSCR	220V-50Hz	95	1.50	CB	AI	174
	PE40E1H-9	4.0	ST	RSCR	220V-50Hz	115	1.40	---	AI	175
	PE45E1F-9	4.5	ST	RSCR	220V-50Hz	120	1.50	---	AI	175
	PE50E1H-9	5.0	ST	RSCR	220V-50Hz	136	1.40	---	AI	175
	SE25E1R-9	2.5	ST	RSIR	220V-50Hz	55	1.00	---	AI	165
	SE30E1M-9	3.0	ST	RSIR	220V-50Hz	75	1.15	CB	AI	165
	SE35E1M-9	3.5	ST	RSIR	220V-50Hz	95	1.30	---	AI	165
	SE40E1H-9	4.0	ST	RSIR	220V-50Hz	108	1.35	CB	AI	174
	SE40E1K-9	4.0	ST	RSIR	220V-50Hz	108	1.25	CB	AI	165
	SE45E1J-9	4.5	ST	RSIR	220V-50Hz	120	1.35	CB	AI	174
H	PE59E1H-9	5.9	ST	RSIR	220V-50Hz	160	1.38	---	AI	174
	PE40H1C-9	4.0	ST	RSCR	220V-50Hz	110	1.65	---	AI	178
	PE45H1F-9	4.5	ST	RSCR	220V-50Hz	130	1.50	CB	AI	178
	PE50H1C-9	5.0	ST	RSCR	220V-50Hz	153	1.63	CB	AI	178
	PE50H1F-9	5.0	ST	RSCR	220V-50Hz	153	1.50	---	AI	178
	PE55H1D-9	5.5	ST	RSCR	220V-50Hz	170	1.60	---	AI	178
	PE55H1F-9	5.5	ST	RSCR	220V-50Hz	163	1.55	CB	AI	178
PE65H1C-9	6.5	ST	RSCR	220V-50Hz	190	1.65	---	AI	178	



Private Picture Copyright : WWW.MBSM.PRO



Private Picture Copyright : WWW.MBSM.PRO

Mbsm_dot_pro_private_PDF_pe50h1f-9Télécharger
Mbsm_dot_pro_private_PDF_pe50h1f-9-2Télécharger
Mbsm_dot_pro_private_PDF_pe50h1f-9-3Télécharger

COMPRESSOR, NL 11 F, 1/3 HP, R134,

230/1/50, DANFOSS, RSIR / CSIR

Category: compressor

written by www.mbsm.pro | 25 December 2020



Private Picture Copyright: WWW.MBSM.PRO

COMPRESSOR, NL 11 F, 1/3 HP, R134, 230/1/50, DANFOSS, RSIR / CSIR

Cubigel, Danfoss, GL80AAb, GL80AA, R134a, (LBP), compressor 1/5HP, Low-temperature

Category: compressor

written by www.mbsm.pro | 25 December 2020

Cubigel GL80AAb R134a (LBP) compressor



Characteristic

Manufacturer	Cubigel
Compressor brand	Cubigel
Model	L
Compressor type	Hermetic piston
The purpose of the compressor	Low-temperature
Refrigeration ratio (EN 12900)	0.88
Performance regulation	No
Power compressor	Phase 1/220 B/50 Hz
Cool performance range (EN 12900), kW	0-1
Cold-performance (T0-35/Tk40), kW	0,103
Height, mm	192
Length, mm	250
Width, mm	200
Net weight, kg	9
Amount of oil, l	0.295
Noise level, dBA	60

[Back to the higher level](#)

Private Picture Copyright: WWW.MBSM.PRO

Cubigel, Danfoss, GL80AAb, R134a, (LBP), compressor 1/5HP, Low-temperature

Daewoo, HSL11Y-5 , Compresseur hermétique, R-134a, 93W, RSIR , 1/8Hp

Category: compressor

written by www.mbsm.pro | 25 December 2020

Series	Model	Displacement [cc/rev]	Consumption Power [W]	Cooling Capacity			Efficiency			Motor Type	Cooling Type	Net Weight [kg]	Oil Qty. [cc]
				kcal/h	Watt	Btu/h	EFF	COP	EER				
							kcal/Wh	W/W	Btu/Wh				
DS	DS22LHS8	2.18	57	37	43	147	1.54	0.75	2.58	RSIR	ST	6.0	180
	DS25LHS8	2.54	63	50	58	198	1.26	0.92	3.15	RSIR	ST	6.0	180
	DS30LHS8	3.06	78	69	80	274	1.13	1.03	3.51	RSIR	ST	6.0	180
WX	WX20LHSST	2.01	58	29	34	115	2.00	0.58	1.98	RSIR	ST	5.9	180
	WX24LHS5	2.54	66	40	47	159	1.65	0.70	2.41	RSIR	ST	5.9	180
	WX24LHSST	2.54	64	40	47	159	1.60	0.73	2.48	RSIR	ST	5.9	180
	WX24LHS8	2.54	66	40	47	159	1.65	0.70	2.41	RSIR	ST	5.9	180
	WX30LHS5	3.06	86	60	70	238	1.43	0.81	2.77	RSIR	ST	5.9	180
	WX30LHSST	3.06	88	59	69	234	1.49	0.78	2.66	RSIR	ST	5.9	180
	WX30LHS8	3.06	86	60	70	238	1.43	0.81	2.77	RSIR	ST	5.9	180
	WX30LHT5W	3.06	75	52	60	206	1.44	0.81	2.75	RSIR	ST	5.9	180
	WX35LHS5	3.51	98	64	74	254	1.53	0.76	2.59	RSIR	ST	5.9	180
	WX35LHSST	3.51	99	64	74	254	1.55	0.75	2.57	RSIR	ST	5.9	180
	WX35LHT5W	3.51	99	64	74	254	1.55	0.75	2.57	RSIR	ST	5.9	180
Y	HPL7Y-5	2.65	62	50	58	198	1.24	0.94	3.20	RSCR	ST	6.7	230
	HPL9Y-5	3.43	76	58	67	230	1.31	0.89	3.03	RSCR	ST	6.7	230
	HPL11Y-5	4.51	89	80	93	317	1.11	1.05	3.57	RSCR	ST	7.0	230
	HSL5Y-5	2.29	65	35	41	139	1.86	0.63	2.14	RSIR	ST	6.3	230
	HSL5Y-5P	2.29	64	35	41	139	1.83	0.64	2.17	RSIR	ST	6.7	230
	HSL7Y-5	2.65	74	48	56	190	1.54	0.75	2.57	RSIR	ST	6.7	230
	HSL9Y-5	3.43	74	46	53	183	1.61	0.72	2.47	RSIR	ST	6.7	230
	HSL11Y-5	4.51	109	80	93	317	1.36	0.85	2.91	RSIR	ST	7.0	230
	HSL11Y-5A	4.51	102	85	99	337	1.20	0.97	3.31	RSIR	ST	7.0	230
	HSL11Y-5T	4.51	108	78	91	310	1.38	0.84	2.87	RSIR	ST	7.0	230
	HPL13JE-5	4.62	97	93	108	369	1.04	1.12	3.80	RSCR	ST/FC	7.4	230
JE	HPL15JE-5	5.12	107	107	124	425	1.00	1.16	3.97	RSCR	ST/FC	7.7	230
	HPL17JE-5	5.55	124	123	143	488	1.01	1.15	3.94	RSCR	ST/FC	7.7	230
	HPL19JE-5	5.84	124	134	156	532	0.93	1.26	4.29	RSCR	ST/FC	8.2	230
	HSL15JE-5	5.12	114	108	126	429	1.06	1.10	3.76	RSIR	ST/FC	7.7	230
	HSL15JE-5A	5.12	117	109	127	433	1.07	1.08	3.70	RSIR	ST/FC	7.7	230
	HSL15JE-5C	5.12	115	108	126	429	1.06	1.09	3.73	RSIR	ST/FC	7.8	230

Private Picture Copyright: WWW.MBSM.PRO

Daewoo, HSL11Y-5 , Compresseur hermétique, R-134a, 109W, RSIR , 1/8Hp

Compressor ,ACC Cubigel ,Huayi
,Electrolux ,ZEM ,GP16TG, HMBP,R134a,
200- 220V / 220-230V/1/50/60Hz, 3/8
HP, displacement 16,15 cm3

Category: Technologie,Tester ok
written by www.mbsm.pro | 25 December 2020



Private Picture Copyright : WWW.MBSM.PRO

Compressor ,ACC Cubigel ,Huayi ,Electrolux ,ZEM ,GP16TG, HMBP,R134a, 200- 220V / 220-230V/1/50/60Hz, 3/8 HP, displacement 16,15 cm³

**EMT36HLP ,EMBRACO ,ASPERA
,COMPRESSEUR FRIGORIFIQUE ,220/240V
50Hz ,1/10 HP, déplacement 3,97 ,
R134 ,LBP**

Category: Technologie,Tester ok
written by www.mbsm.pro | 25 December 2020



Private Picture : www.MBSM.PRO

EMT36HLP ,EMBRACO ,ASPERA ,COMPRESSEUR FRIGORIFIQUE ,220/240V 50Hz ,1/10 HP,
déplacement 3,97 , R134 ,LBP

Compresseur, d'entreposage au froid,
de congélateur , Sc12g , Secop
,Certification CE ,1/3 puissance ,en
chevaux ,de mini type réfrigérateur
,R134 ,Danfos

Category: Technologie,Tester ok
written by www.mbsm.pro | 25 December 2020

Non	Modèle	HP	La température	L'électricité	Réfrigérant
1	SC10C	1/3	LBP	220~240V/50HZ	R22
2	SC12C	3/8	LBP	220~240V/50HZ	R22
3	SC15CM	1/2	LBP	220~240V/50HZ	R22
4	SC18CM	5/8	LBP	220~240V/50HZ	R22
5	SC10D	3/8	MBP	220~240V/50HZ	R22
6	SC12D	1/2	MBP	220~240V/50HZ	R22
7	SC15D	5/8	MBP	220~240V/50HZ	R22
8	SC10G	5/16	MBP	220~240V/50HZ	R22
9	SC12G	1/3	MBP	220~240V/50HZ	R134A
10	SC15G	3/8	MBP	220~240V/50HZ	R134A
11	SC18G	1/2	MBP	220~240V/50HZ	R134A
12	SC21G	5/8	MBP	220~240V/50HZ	R134A
13	SC10CL	1/3	LBP	220~240V/50HZ	R404a
14	SC12CL	3/8	LBP	220~240V/50HZ	R404a
15	SC15CL	1/2	LBP	220~240V/50HZ	R404a
16	SC18CL	5/8	LBP	220~240V/50HZ	R404a
17	SC21CL	7/8	LBP	220~240V/50HZ	R404a

Private Picture : www.MBSM.PRO

Compresseur, d'entreposage au froid, de congélateur , Sc12g , Secop , Certification CE ,1/3 puissance ,en chevaux ,de mini type réfrigérateur ,de R134 Danfos

Compressor , 1/12Hp , Qd25h R134a, 1/12HP , 62/72W

Category: Technologie, Tester ok
written by www.mbsm.pro | 25 December 2020



Compressor ,1/12Hp ,Qd25h R134a,1/12HP ,62/72W

COMPRESSOR, EMBRACO , fgs130ha, LBP
(Low Back Pressure) ,RSCR ,316 W
,1/3+ HP ,220-240 V 50 Hz ,1080 Btu/h
,11,14 c.c.,R134a

Category: Technologie,Tester ok
written by www.mbsm.pro | 25 December 2020

Embraco FGS130HAW



THERMALLY PROTECTED

10 LRA

R 134a

1 PH

220-240V~
50Hz

JOINVILLE-SC NO START WITHOUT STARTING DEVICE
MADE IN BRAZIL



513200607 FAB 1 26/JAN/05 E05DDHWA

HFC - 134a

△ 注意

△ 高温注意

Compressore	EMBRACO
Modello	FGS130HAW
Altezza (mm)	
Gas	R134a
Tensione	220-240 V 50 Hz
Applicazione	LBP (Low Back Pressure)
Test Condition	ASHRAE LBP 32
Cilindrata	11,14 c.c.
Motore	RSCR
Potenza (HP)	1/3+
Cap. Frigor. Watt	316
Cap. Frigor. Kcal	272
Cap. Frigor. Btu/h	1080
COP (W/W)	1,49
Watt assorbiti (W)	
Dispositivo di Avv.	
Condensatore	
Tipo Raffreddamento	



Embraco FGS130HAW



THERMALLY PROTECTED

10 LRA

R 134a

1 PH

220-240V~

50Hz

JOINVILLE-SC NO START WITHOUT STARTING DEVICE
MADE IN BRAZIL



513200607 FAB 1 26/JAN/05 E05DDHWA

HFC - 134a

△ 注意

△ 高温注意

Private Picture : www.MBSM.PRO

sm.pro

Compressore

EMBRACO

Modello	FGS130HAW
Altezza (mm)	
Gas	R134a
Tensione	220-240 V 50 Hz
Applicazione	LBP (Low Back Pressure)
Test Condition	ASHRAE LBP 32
Cilindrata	11,14 c.c.
Motore	RSCR
Potenza (HP)	1/3+
Cap. Frigor. Watt	316
Cap. Frigor. Kcal	272
Cap. Frigor. Btu/h	1080
COP (W/W)	1,49
Watt assorbiti (W)	
Dispositivo di Avv.	
Condensatore	
Tipo Raffreddamento	
Imballo (Pcs/Pallet)	