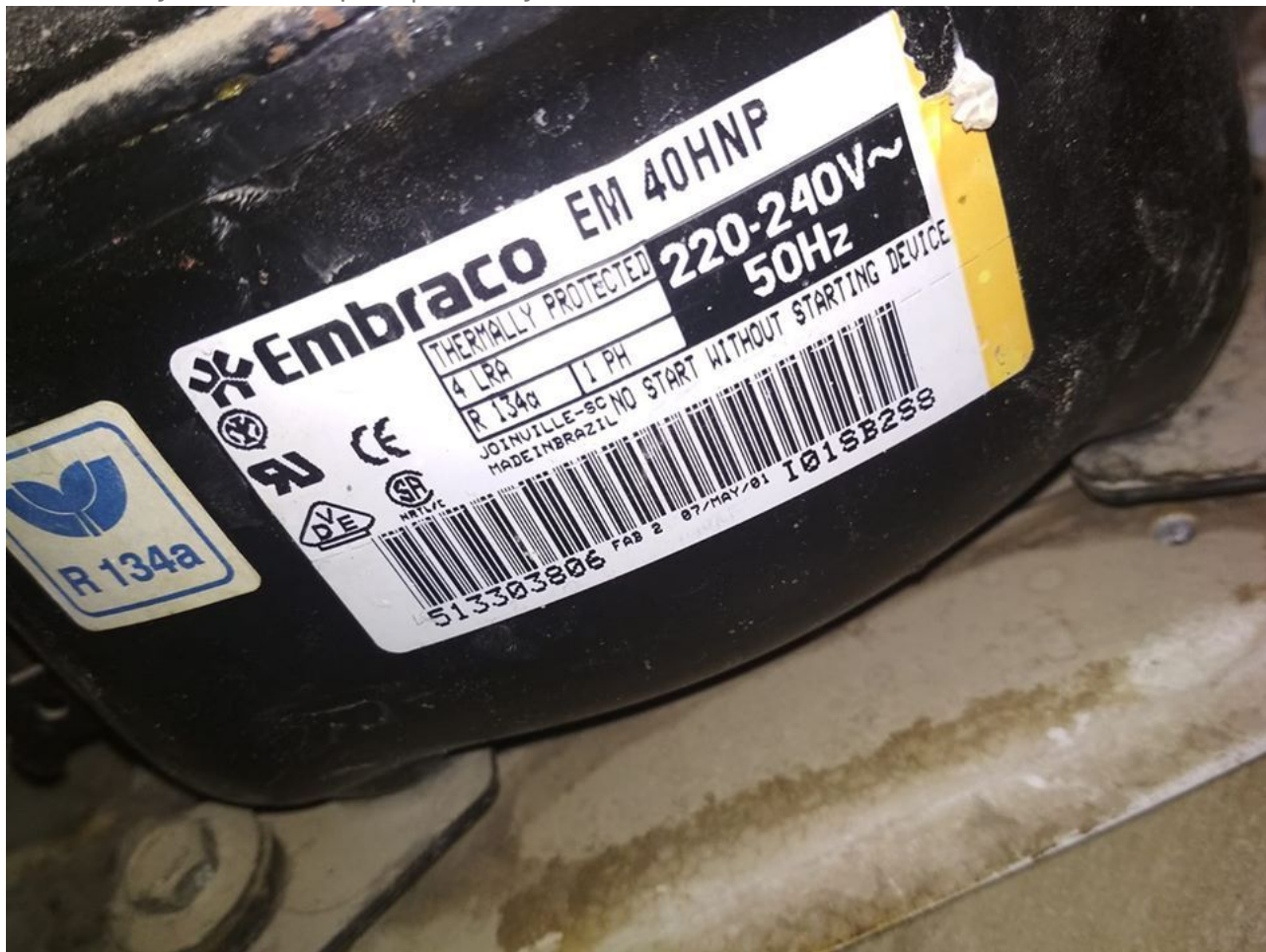


Em40Hnp, Embraco Compressor, Aspera ,R134A 240V 50hz , 1/8 Hp , 1 Phase

Category: Technologie,Tester ok
written by www.mbsm.pro | 19 May 2020



Private Picture Copyright: WWW.MBSM.PRO

Em40Hnp, Embraco Compressor, Aspera ,R134A 240V 50hz , 1/8 Hp , 1 Phase

Tecumseh compressor model AE4448YS,refrigeration compressor (AVEC Condensateur), R134a , Lra 19.5A , 220 V 50Hz , 3/8 H ,CSIR , Medium/High Back Pressure

Category: Technologie,Tester ok
written by www.mbsm.pro | 19 May 2020



Private Picture Copyright : WWW.MBSM.PRO

Tecumseh compressor model AE4448YS, refrigeration compressor , R134a , Lra 19.5A , 220 V 50Hz , 3/8 H , CSIR , Medium/High Back Pressure

REFRIGERATION APPLICATION CHART (R12 AND R22)

Category: Technologie, Tester ok
 written by www.mbsm.pro | 19 May 2020

REFRIGERATION APPLICATION CHART (R-12 AND R-22)*

H.P.	REF.	NOTE	NORMAL EVAPORTING TEMPERATURE DEGREES F							
			-10 to +5		+5 to +20		+20 to +35		+35 to +50	
1/20	R12	S-F	16 Ft.	TC-26	10 Ft.	TC-26				
1/12	R12	S-F	12 Ft.	TC-26	12 Ft.	TC-31				
1/9	R12	S	12 Ft.	TC-26	12 Ft.	TC-31				
1/9	R12	S	10 Ft.	TC-26	10 Ft.	TC-31				
1/8	R12	S-F	10 Ft.	TC-26	10 Ft.	TC-31				
1/6	R12	S	12 Ft.	TC-31	12 Ft.	TC-36	8 Ft.	TC-36	10 Ft.	TC-42
1/6	R12	F	10 Ft.	TC-31	10 Ft.	TC-36				
1/5	R12	S	10 Ft.	TC-31	10 Ft.	TC-36	7-1/2 Ft.	TC-42	7-1/2 Ft.	TC-49
1/5	R12	F	8 Ft.	TC-31	8 Ft.	TC-36	10 Ft.	TC-42	6 Ft.	TC-42
1/4	R22	S-F	12 Ft.	TC-36	6 Ft.	TC-36	8-1/2 Ft.	TC-42	6 Ft.	TC-49
1/4	R12	F	10 Ft.	TC-36	6 Ft.	TC-36	8 Ft.	TC-42	6 Ft.	TC-49
1/3	R22	F	10 Ft.	TC-36	6 Ft.	TC-36	11 Ft.	TC-49		
1/3	R12	F	12 Ft.	TC-42	6 Ft.	TC-42	9 Ft.	TC-49	6 Ft.	TC-54
1/2	R22	F	6 Ft.	TC-36	9 Ft.	TC-42	7-1/2 Ft.	TC-54	10 Ft.	TC-64
1/2	R12	F	11 Ft.	TC-54	9 Ft.	TC-49				
3/4	R22	F	11 Ft.	TC-54	9 Ft.	TC-54				
3/4	R12	F	7-1/2 Ft.	TC-54	12 Ft.	TC-70	1 Ft.	TC-80		
1	R22	F	10 Ft.	TC-64	12 Ft.	TC-70				
1	R12	F	10 Ft.	TC-70	11 Ft.	TC-54	7-1/2 Ft.	TC-54 (2 pcs)		
1-1/2	R22	F	7-1/2 Ft.	TC-54 (2 pcs)	7-1/2 Ft.	TC-54 (2 pcs)	8 Ft.	TC-64 (2 pcs)		
1-1/2	R12	F			9 Ft.	TC-64 (2 pcs)	10 Ft.	TC-80 (2 pcs)		
2	R22	F			10 Ft.	TC-70 (2 pcs)	9 Ft.	TC-75 (2 pcs)		
2	R12	F	10 Ft.	TC-70 (2 pcs)	9 Ft.	TC-75 (2 pcs)	10 Ft.	TC-85 (2 pcs)		
3	R22	F			10 Ft.	TC-70 (3 pcs)	9 Ft.	TC-75 (3 pcs)		
3	R12	F	10 Ft.	TC-70 (2 pcs)	8 Ft.	TC-64 (4 pcs)	10 Ft.	TC-80 (4 pcs)		
4	R22	F			10 Ft.	TC-70 (4 pcs)	9 Ft.	TC-75 (4 pcs)		
4	R12	F			10 Ft.	TC-70 (5 pcs)	9 Ft.	TC-75 (5 pcs)		
5	R12	F			10 Ft.	TC-80 (5 pcs)	9 Ft.	TC-85 (5 pcs)		

NOTE: Condenser Type: S = Static, F = FAN

*R-134a - It is suggested to add 10% to length.

Private Picture Copyright : WWW.MBSM.PRO

REFRIGERATION APPLICATION CHART (R12 AND R22)

REFRIGERATION APPLICATION CHART (R-12 AND R-22)*

H.P.	REF.	NOTE	NORMAL EVAPORTING TEMPERATURE DEGREES F							
			-10 to +5		+5 to +20		+20 to +35		+35 to +50	
1/20	R12	S-F	16 Ft.	TC-26	10 Ft.	TC-26				
1/12	R12	S-F	12 Ft.	TC-26	12 Ft.	TC-31				
1/9	R12	S	12 Ft.	TC-26	12 Ft.	TC-31				
1/9	R12	S	10 Ft.	TC-26	10 Ft.	TC-31				
1/8	R12	S-F	10 Ft.	TC-26	10 Ft.	TC-31				
1/6	R12	S	12 Ft.	TC-31	12 Ft.	TC-36	8 Ft.	TC-36	10 Ft.	TC-42
1/6	R12	F	10 Ft.	TC-31	10 Ft.	TC-36				
1/5	R12	S	10 Ft.	TC-31	10 Ft.	TC-36	7-1/2 Ft.	TC-42	7-1/2 Ft.	TC-49
1/5	R12	F	8 Ft.	TC-31	8 Ft.	TC-36	10 Ft.	TC-42	6 Ft.	TC-42
1/4	R22	S-F	12 Ft.	TC-36	6 Ft.	TC-36	8-1/2 Ft.	TC-42	6 Ft.	TC-49
1/4	R12	F	10 Ft.	TC-36	6 Ft.	TC-36	8 Ft.	TC-42	6 Ft.	TC-49
1/3	R22	F	10 Ft.	TC-36	6 Ft.	TC-36	11 Ft.	TC-49		
1/3	R12	F	12 Ft.	TC-42	6 Ft.	TC-42	9 Ft.	TC-49	6 Ft.	TC-54
1/2	R22	F	6 Ft.	TC-36	9 Ft.	TC-42	7-1/2 Ft.	TC-54	10 Ft.	TC-64
1/2	R12	F	11 Ft.	TC-54	9 Ft.	TC-49				
3/4	R22	F	11 Ft.	TC-54	9 Ft.	TC-54				
3/4	R12	F	7-1/2 Ft.	TC-54	12 Ft.	TC-70	1 Ft.	TC-80		
1	R22	F	10 Ft.	TC-64	12 Ft.	TC-70				
1	R12	F	10 Ft.	TC-70	11 Ft.	TC-54	7-1/2 Ft.	TC-54 (2 pcs)		
1-1/2	R22	F	7-1/2 Ft.	TC-54 (2 pcs)	7-1/2 Ft.	TC-54 (2 pcs)	8 Ft.	TC-64 (2 pcs)		
1-1/2	R12	F			9 Ft.	TC-64 (2 pcs)	10 Ft.	TC-80 (2 pcs)		
2	R22	F			10 Ft.	TC-70 (2 pcs)	9 Ft.	TC-75 (2 pcs)		
2	R12	F	10 Ft.	TC-70 (2 pcs)	9 Ft.	TC-75 (2 pcs)	10 Ft.	TC-85 (2 pcs)		
3	R22	F			10 Ft.	TC-70 (3 pcs)	9 Ft.	TC-75 (3 pcs)		
3	R12	F	10 Ft.	TC-70 (2 pcs)	8 Ft.	TC-64 (4 pcs)	10 Ft.	TC-80 (4 pcs)		
4	R22	F			10 Ft.	TC-70 (4 pcs)	9 Ft.	TC-75 (4 pcs)		
4	R12	F			10 Ft.	TC-70 (5 pcs)	9 Ft.	TC-75 (5 pcs)		
5	R12	F			10 Ft.	TC-80 (5 pcs)	9 Ft.	TC-85 (5 pcs)		

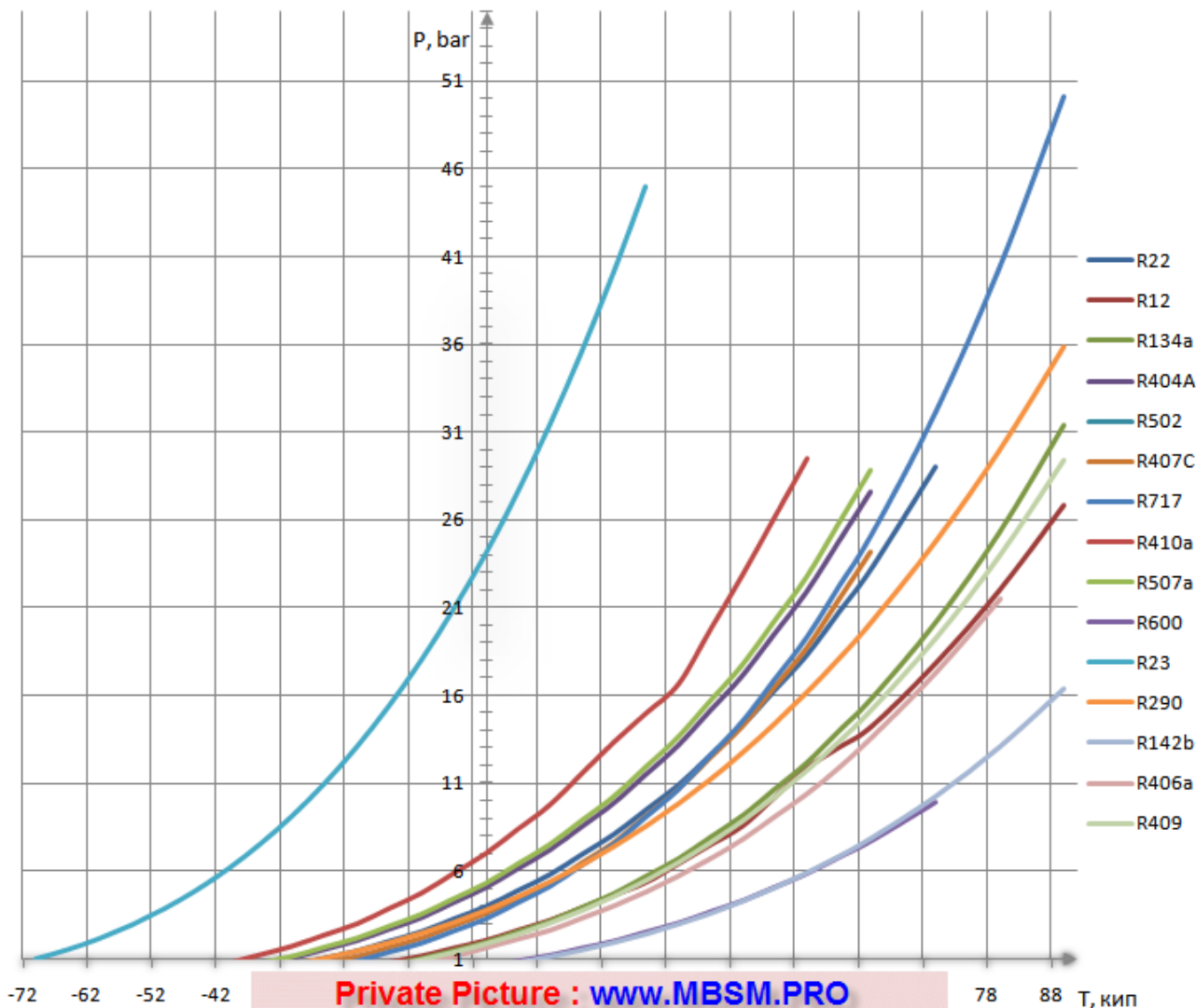
NOTE: Condenser Type: S = Static, F = FAN

*R-134a – It is suggested to add 10% to length.

Private Picture Copyright : WWW.MBSM.PRO

Refrigerant High & Low Pressure Temperature Chart ,R22 R410A ,R12 ,R134A ,R401A ,R409A ,R502 ,R404A ,R507A ,R408A ,R402A ,R600A

Category: Non classé, Solutions
written by www.mbsm.pro | 19 May 2020



Refrigerant High & Low Pressure Temperature Chart ,R22 R410A ,R12 ,R134A ,R401A ,R409A ,R502 ,R404A ,R507A ,R408A ,R402A ,R600A

Compresseur, hermétique Daewoo
 ,HSL19JE-5, RLA 5.5 ,R134a LBP
 220-240V / 50Hz , 144/155 W , 1/5 HP,
 516 Btu ,RSIR

Category: Technologie, Tester ok
 written by www.mbsm.pro | 19 May 2020

Series	Model	Displacement [cc/rev]	Power [W]	kcal/h	Watt	Btu/h	EFF	COP	EER	Motor Type	Compressor Type	Weight [kg]	Qty. [cc]
							kcal/Wh	W/W	Btu/Wh				
DS	DS22LHS8	2.18	57	37	43	147	1.54	0.75	2.58	RSIR	ST	6.0	180
	DS25LHS8	2.54	63	50	58	198	1.26	0.92	3.15	RSIR	ST	6.0	180
	DS30LHS8	3.06	78	69	80	274	1.13	1.03	3.51	RSIR	ST	6.0	180
WX	WX20LHSST	2.01	58	29	34	115	2.00	0.58	1.98	RSIR	ST	5.9	180
	WX24LHS5	2.54	66	40	47	159	1.65	0.70	2.41	RSIR	ST	5.9	180
	WX24LHSST	2.54	64	40	47	159	1.60	0.73	2.48	RSIR	ST	5.9	180
	WX24LHS8	2.54	66	40	47	159	1.65	0.70	2.41	RSIR	ST	5.9	180
	WX30LHS5	3.06	86	60	70	238	1.43	0.81	2.77	RSIR	ST	5.9	180
	WX30LHSST	3.06	88	59	69	234	1.49	0.78	2.66	RSIR	ST	5.9	180
	WX30LHS8	3.06	86	60	70	238	1.43	0.81	2.77	RSIR	ST	5.9	180
	WX30LHT5W	3.06	75	52	60	206	1.44	0.81	2.75	RSIR	ST	5.9	180
	WX35LHSST	3.51	98	64	74	254	1.53	0.76	2.59	RSIR	ST	5.9	180
	WX35LHT5W	3.51	99	64	74	254	1.55	0.75	2.57	RSIR	ST	5.9	180
Y	HPL7Y-5	2.65	62	50	58	198	1.24	0.94	3.20	RSCR	ST	6.7	230
	HPL9Y-5	3.43	76	58	67	230	1.31	0.89	3.03	RSCR	ST	6.7	230
	HPL11Y-5	4.51	89	80	93	317	1.11	1.05	3.57	RSCR	ST	7.0	230
	HSL5Y-5	2.29	65	35	41	139	1.86	0.63	2.14	RSIR	ST	6.3	230
	HSL5Y-5P	2.29	64	35	41	139	1.83	0.64	2.17	RSIR	ST	6.7	230
	HSL7Y-5	2.65	74	48	56	190	1.54	0.75	2.57	RSIR	ST	6.7	230
	HSL9Y-5	3.43	74	46	53	183	1.61	0.72	2.47	RSIR	ST	6.7	230
	HSL11Y-5	4.51	109	80	93	317	1.36	0.85	2.91	RSIR	ST	7.0	230
	HSL11Y-5A	4.51	102	85	99	337	1.20	0.97	3.31	RSIR	ST	7.0	230
	HSL11Y-5T	4.51	108	78	91	310	1.38	0.84	2.87	RSIR	ST	7.0	230
JE	HPL13JE-5	4.62	97	93	108	369	1.04	1.12	3.80	RSCR	ST/FC	7.4	230
	HPL15JE-5	5.12	107	107	124	425	1.00	1.16	3.97	RSCR	ST/FC	7.7	230
	HPL17JE-5	5.55	124	123	143	488	1.01	1.15	3.94	RSCR	ST/FC	7.7	230
	HPL19JE-5	5.84	124	134	156	532	0.93	1.26	4.29	RSCR	ST/FC	8.2	230
	HSL15JE-5	5.12	114	108	126	429	1.06	1.10	3.76	RSIR	ST/FC	7.7	230
	HSL15JE-5A	5.12	117	109	127	433	1.07	1.08	3.70	RSIR	ST/FC	7.7	230
	HSL15JE-5C	5.12	115	108	126	429	1.06	1.09	3.73	RSIR	ST/FC	7.8	230
	HSL17JE-5	5.55	129	126	147	500	1.02	1.14	3.88	RSIR	ST/FC	7.7	230
	HSL17JE-5A	5.55	129	121	141	480	1.07	1.09	3.72	RSIR	ST/FC	7.7	230
	HSL19JE-5	5.84	133	130	151	516	1.02	1.14	3.88	RSIR	ST/FC	8.2	230
HSL19JE-5A	5.84	141	135	157	536	1.04	1.11	3.80	RSIR	ST/FC	7.8	230	
JX41LHS5	4.09	101	89	104	353	1.13	1.02	3.50	RSIR	ST/FC	7.6	230	

Private Picture : www.MBSM.PRO

Compresseur, hermétique Daewoo ,HSL19JE-5, RLA 5.5 ,R134a LBP 220-240V / 50Hz , 133/144 W , 1/6HP, 516 Btu ,RSIR

SECOP , R600 ,Compresseur de réfrigérateur, DLY9.4KK, 220/50Ht, 1/5 HP , 166w ,LBP

Category: Technologie,Tester ok
written by www.mbsm.pro | 19 May 2020



Private Picture : www.MBSM.PRO

SECOP , R600 ,Compresseur de réfrigérateur, DLY9.4KK, 220/50Ht, 1/5 , 166w ,LBP

Compressor ,Embraco Aspera ,NJ2212GK,
LBP – R404A, R507, 220-240V/1/50Hz,
1.5 HP, 34.38 cm³, LRA 36.0 A, CSR,
lubricant charge 750ml POE 22, 1547 W
,at -23.3 / +54.4 °

Category: Technologie,Tester ok
written by www.mbsm.pro | 19 May 2020



Private Picture Copyright : WWW.MBSM.PRO

Compressor ,Embraco Aspera ,NJ2212GK, LBP – R404A, R507, 220-240V/1/50Hz, 1.5
HP, 34.38 cm³, LRA 36.0 A, CSR, lubricant charge 750ml POE 22, 1547 W ,at -23.3
/ +54.4 °

Compresseur, d'entreposage au froid,
de congélateur , Sc12g , Secop
,Certification CE ,1/3 puissance ,en
chevaux ,de mini type réfrigérateur
,R134 ,Danfos

Category: Technologie,Tester ok
written by www.mbsm.pro | 19 May 2020

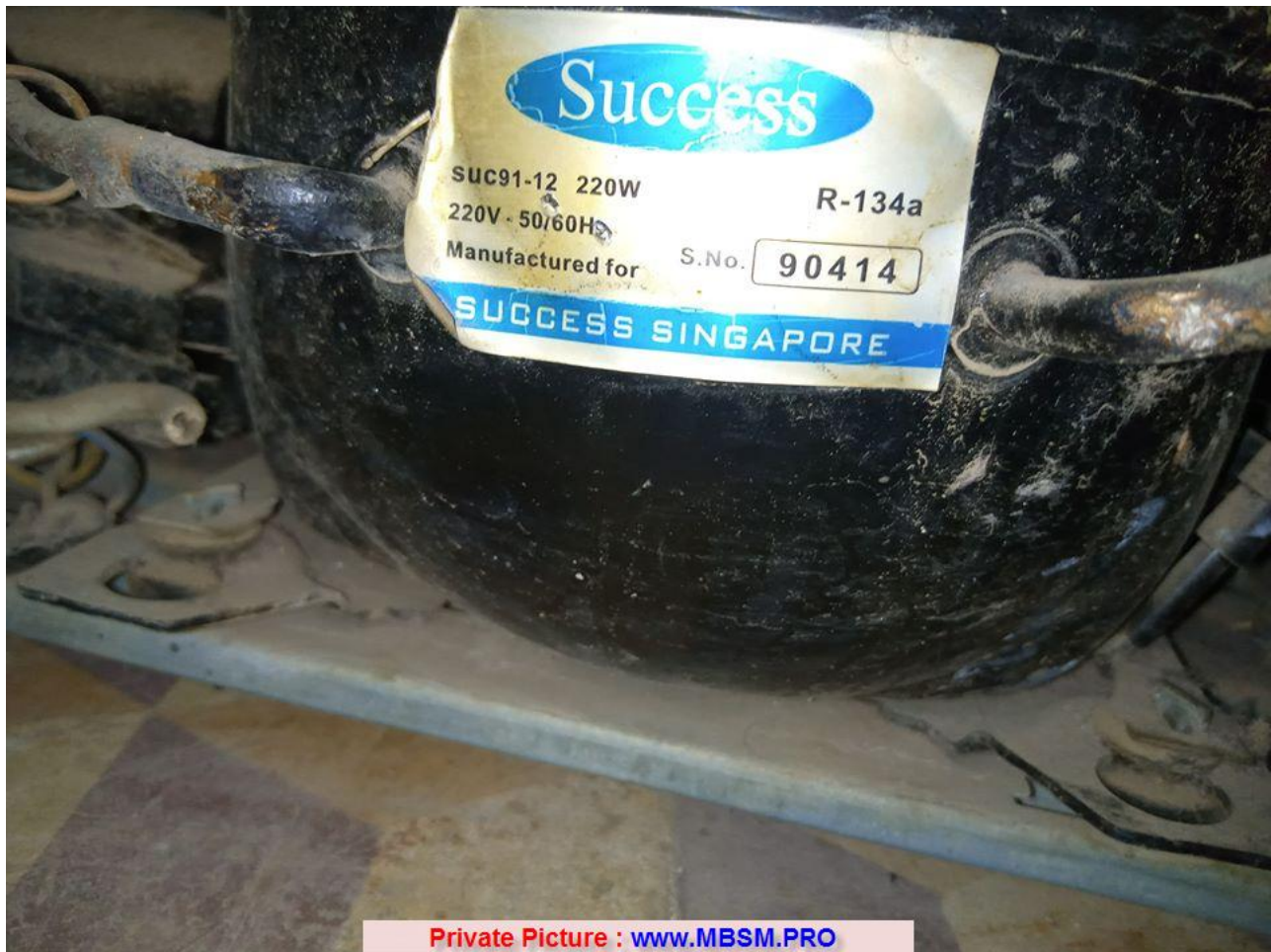
Non	Modèle	HP	La température	L'électricité	Réfrigérant
1	SC10C	1/3	LBP	220~240V/50HZ	R22
2	SC12C	3/8	LBP	220~240V/50HZ	R22
3	SC15CM	1/2	LBP	220~240V/50HZ	R22
4	SC18CM	5/8	LBP	220~240V/50HZ	R22
5	SC10D	3/8	MBP	220~240V/50HZ	R22
6	SC12D	1/2	MBP	220~240V/50HZ	R22
7	SC15D	5/8	MBP	220~240V/50HZ	R22
8	SC10G	5/16	MBP	220~240V/50HZ	R22
9	SC12G	1/3	MBP	220~240V/50HZ	R134A
10	SC15G	3/8	MBP	220~240V/50HZ	R134A
11	SC18G	1/2	MBP	220~240V/50HZ	R134A
12	SC21G	5/8	MBP	220~240V/50HZ	R134A
13	SC10CL	1/3	LBP	220~240V/50HZ	R404a
14	SC12CL	3/8	LBP	220~240V/50HZ	R404a
15	SC15CL	1/2	LBP	220~240V/50HZ	R404a
16	SC18CL	5/8	LBP	220~240V/50HZ	R404a
17	SC21CL	7/8	LBP	220~240V/50HZ	R404a

Private Picture : www.MBSM.PRO

Compresseur, d'entreposage au froid, de congélateur , Sc12g , Secop , Certification CE , 1/3 puissance , en chevaux , de mini type réfrigérateur , de R134 Danfos

SUC91-12 , Compresseur , 220 w , 1/4 HP , HBP , or 1/3 HP , R134a

Category: Technologie, Tester ok
written by www.mbsm.pro | 19 May 2020



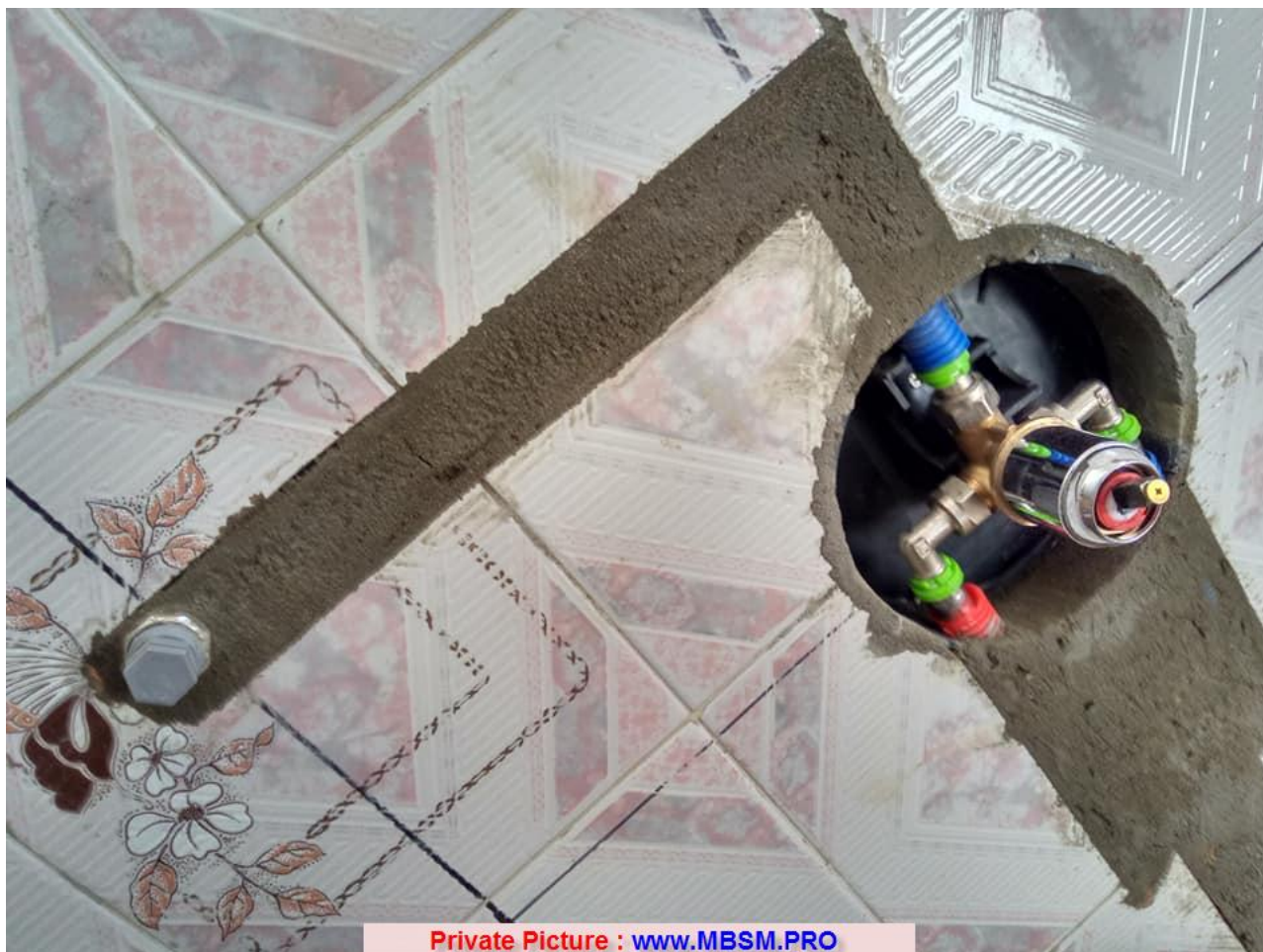
Private Picture : www.MBSM.PRO

SUC91-12 ,Compresseur ,220 w , 1/4 HP , HBP, or 1/3 HP

PICTURES :Jeux mitigeurs encastrée ,pour une salle d'eau

Category: Non classé,Plomberie

written by www.mbsm.pro | 19 May 2020

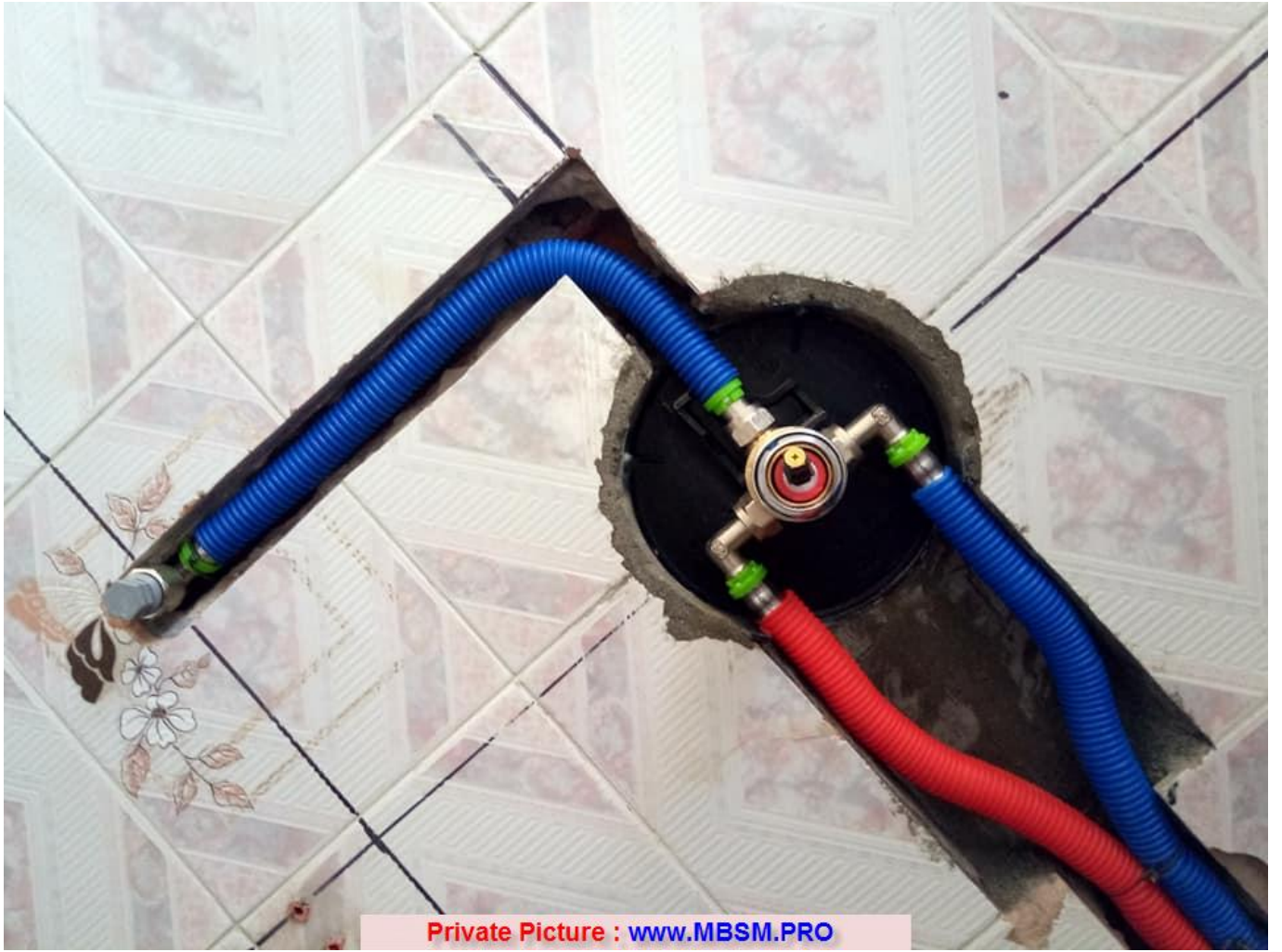


Private Picture : www.MBSM.PRO

IMAGES FACEBOOK

Les artistes de plomberie et chauffage central

Robinet *Salle de Bain* Matériel: en cuivre. Fonctionnement silencieux. Fonction: mélange d'eau chaude et d'eau froide; Mitigeur monocommande



Private Picture : www.MBSM.PRO



Private Picture : www.MBSM.PRO

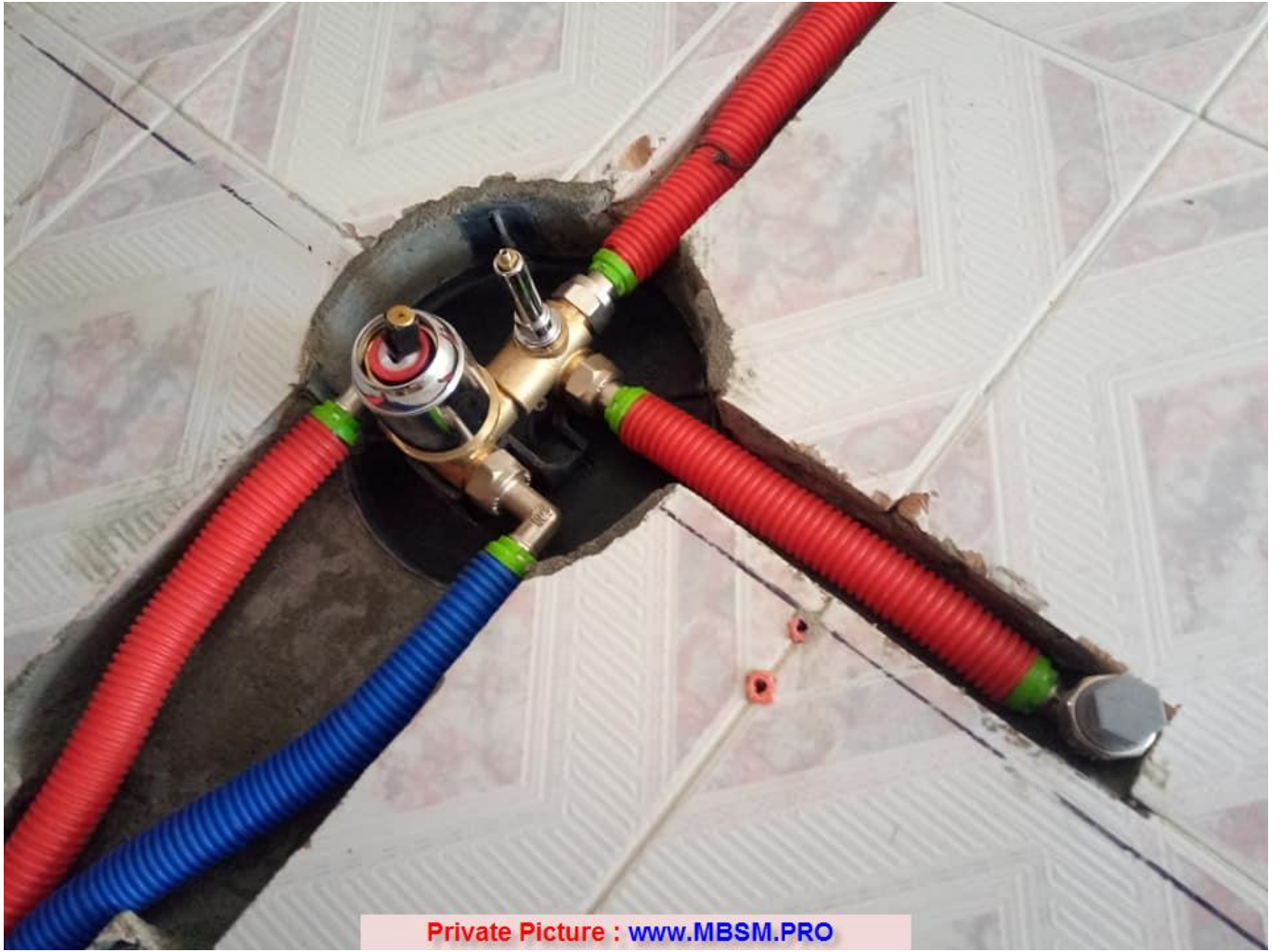


Private Picture : www.MBSM.PRO

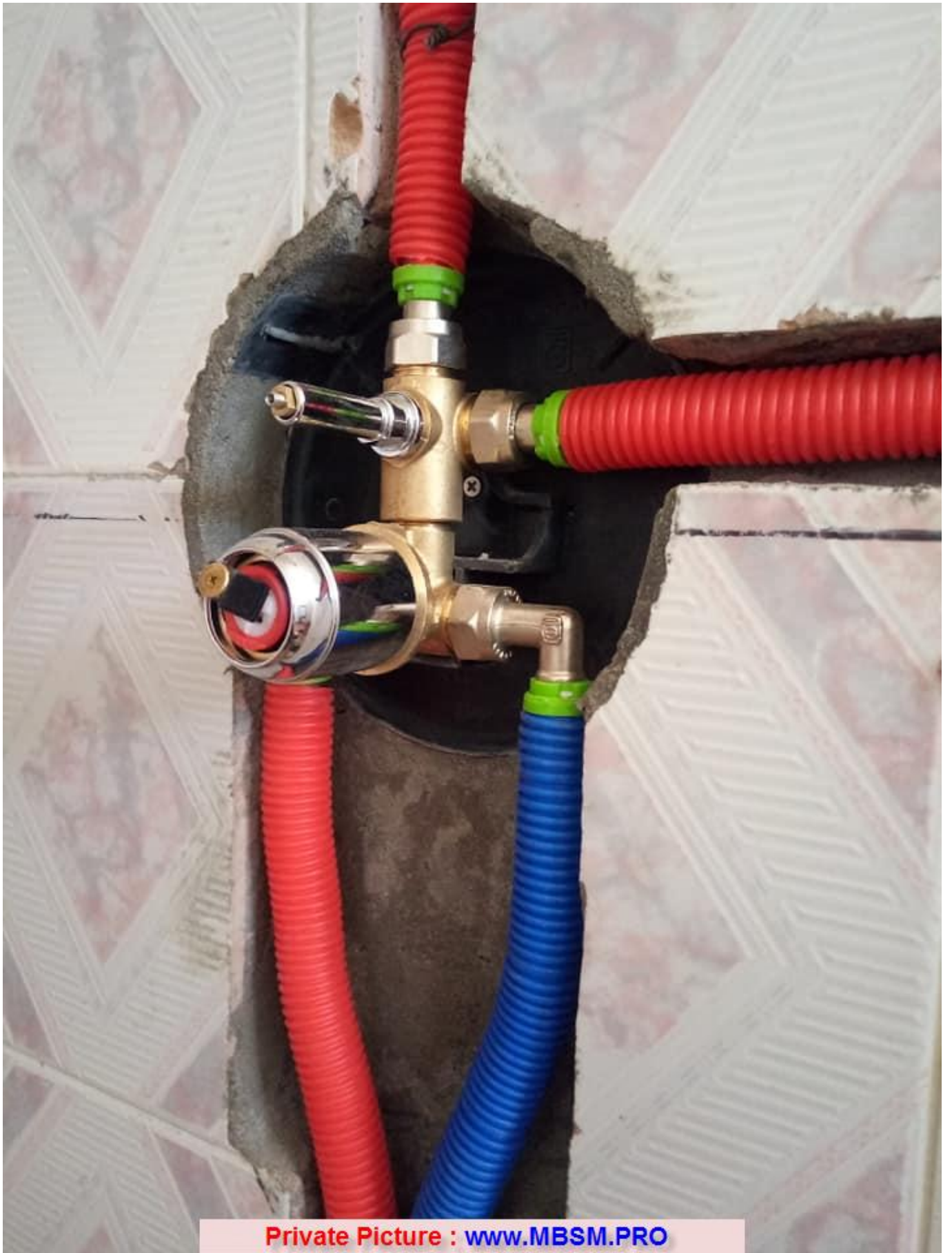




Private Picture : www.MBSM.PRO



Private Picture : www.MBSM.PRO



Private Picture : www.MBSM.PRO



Private Picture : www.MBSM.PRO



Private Picture : www.MBSM.PRO



Private Picture : www.MBSM.PRO