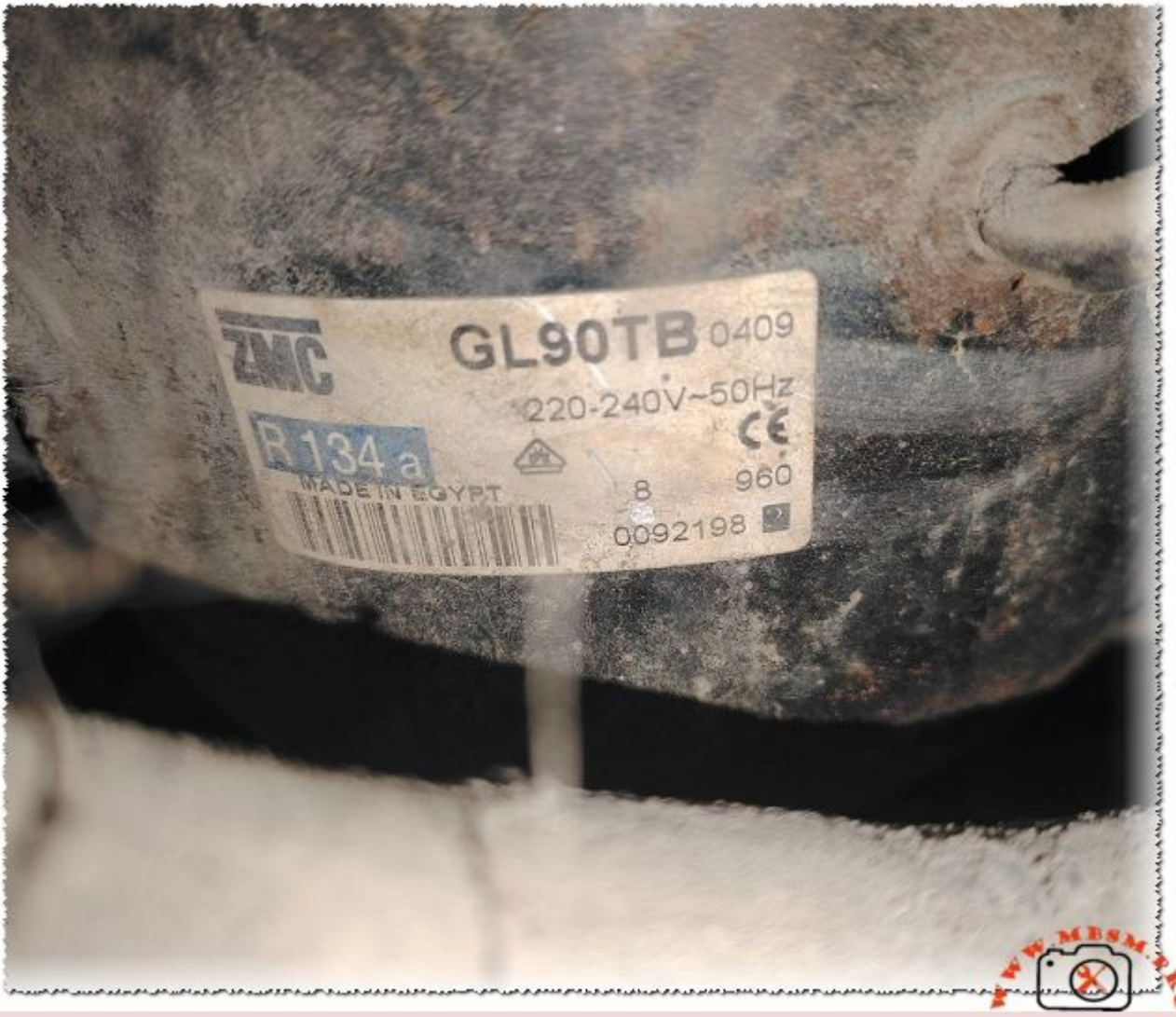


ZMC GL90TB Compressor Technical Specifications and R134a Replacement Guide

Category: Mbsmpro

written by www.mbsm.pro | 31 January 2026



Private Picture Copyright : WWW.MBSM.PRO

The ZMC GL90TB is a high-performance 1/4 HP compressor designed for High Back Pressure (HBP) commercial refrigeration. Operating on R134a with a 220-240V supply, it offers a cooling capacity of approximately 2800 BTU/h. This article provides technical specs, COP efficiency metrics, and direct replacement models for professional HVAC technicians and industrial cooling experts.

Pepsi single-door refrigerator, 90

cm, compressor, 1/2 hp hbp

Category: Refrigeration

written by www.mbsm.pro | 31 January 2026



Private Picture Copyright : WWW.MBSM.PRO

The Danfoss SC15G (104G8525) is a high-capacity 1/2 HP compressor designed for R134a commercial cooling applications. Featuring a 15.28cc displacement and German engineering, it excels in MBP/HBP environments like display coolers. This professional guide details its 738W cooling capacity, electrical requirements, and provides a comprehensive cross-reference list for field technicians and engineers.

Secop GTK70AT Compressor Specifications and Equivalents

Category: Refrigeration

written by www.mbsm.pro | 31 January 2026



Private Picture Copyright : WWW.MBSM.PRO

The SECOP GTK70AT is a high-performance 1/5+ HP compressor designed for R134a Low Back Pressure (LBP) applications. Featuring a 6.64 cm³ displacement and 195W cooling capacity at -23.3°C, this Slovakian-made unit is a reliable choice for domestic freezers and refrigerators. This guide provides full technical specs, COP metrics, and professional replacement equivalents.

Comptek QD65H Compressor 1/6 HP R134a L/MBP Technical Specifications and Replacement Guide

Category: Refrigeration

written by www.mbsm.pro | 31 January 2026



Private Picture Copyright : WWW.MBSM.PRO

The Comptek QD65H is a high-performance 1/6 HP reciprocating compressor designed for R134a systems. Ideal for refrigerators between 180 and 250 liters, it offers a cooling capacity of 160W at -23.3°C. This professional guide covers its electrical characteristics, COP efficiency metrics, and provides a comprehensive list of equivalent models for seamless field replacement.

Daewoo JX58LHS5-K vs Embraco FFI7.5HAK Comparison

Category: Mbsmpro, Refrigeration
written by www.mbsm.pro | 31 January 2026



Private Picture Copyright : WWW.MBSM.PRO

Selecting the right compressor is the heartbeat of any refrigeration repair. Today, we dive deep into the Daewoo JX58LHS5-K and Embraco FFI7.5HAK. Both use R134a and operate in the LBP range, but their cooling capacities and displacements differ, making one better suited for tropical climates and the other for high-performance pull-down needs.

LG MA57LBJG Compressor 1/6 HP R134a LBP Technical Specifications and Replacements

Category: Refrigeration

written by www.mbsm.pro | 31 January 2026



Private Picture Copyright : WWW.MBSM.PRO

The LG MA57LBJG is a high-performance 1/6 HP compressor designed for R134a refrigerant in Low Back Pressure (LBP) applications. Ideal for domestic freezers, it delivers 160W of cooling capacity at -23.3°C. This guide provides comprehensive technical data, winding details, and a full cross-reference list for professional refrigeration technicians and engineers.

How many cubic feet can LJ118CY1 compressor cooling ?

Category: Refrigeration

written by www.mbsm.pro | 31 January 2026



Private Picture Copyright : WWW.MBSM.PRO

The Donper LJ118CY1 is a high-performance 1/4 HP hermetic compressor designed for domestic refrigerators using R600a refrigerant. Known for its efficiency and quiet operation, it features a displacement of 11.8cc and a cooling capacity of 198W at -23.3°C. This article provides technical details, wiring diagrams, and compatible replacement models for professional technicians.

The Cooling Workhorse: Deep Dive into the Danfoss NL7.3FT Compressor

Category: Refrigeration

written by www.mbsm.pro | 31 January 2026



Private Picture Copyright : WWW.MBSM.PRO

The Danfoss NL7.3FT is a cornerstone of domestic and light commercial refrigeration. Engineered for Low Back Pressure (LBP) applications using R134a refrigerant, this 1/4 HP unit offers reliability and high efficiency. In this guide, we break down the technical displacement, cooling capacity, and provide a comprehensive list of compatible replacements to ensure your cooling systems stay operational.

Technical Troubleshooting: Automatic Washer Stops After Filling

Category: Global Electric

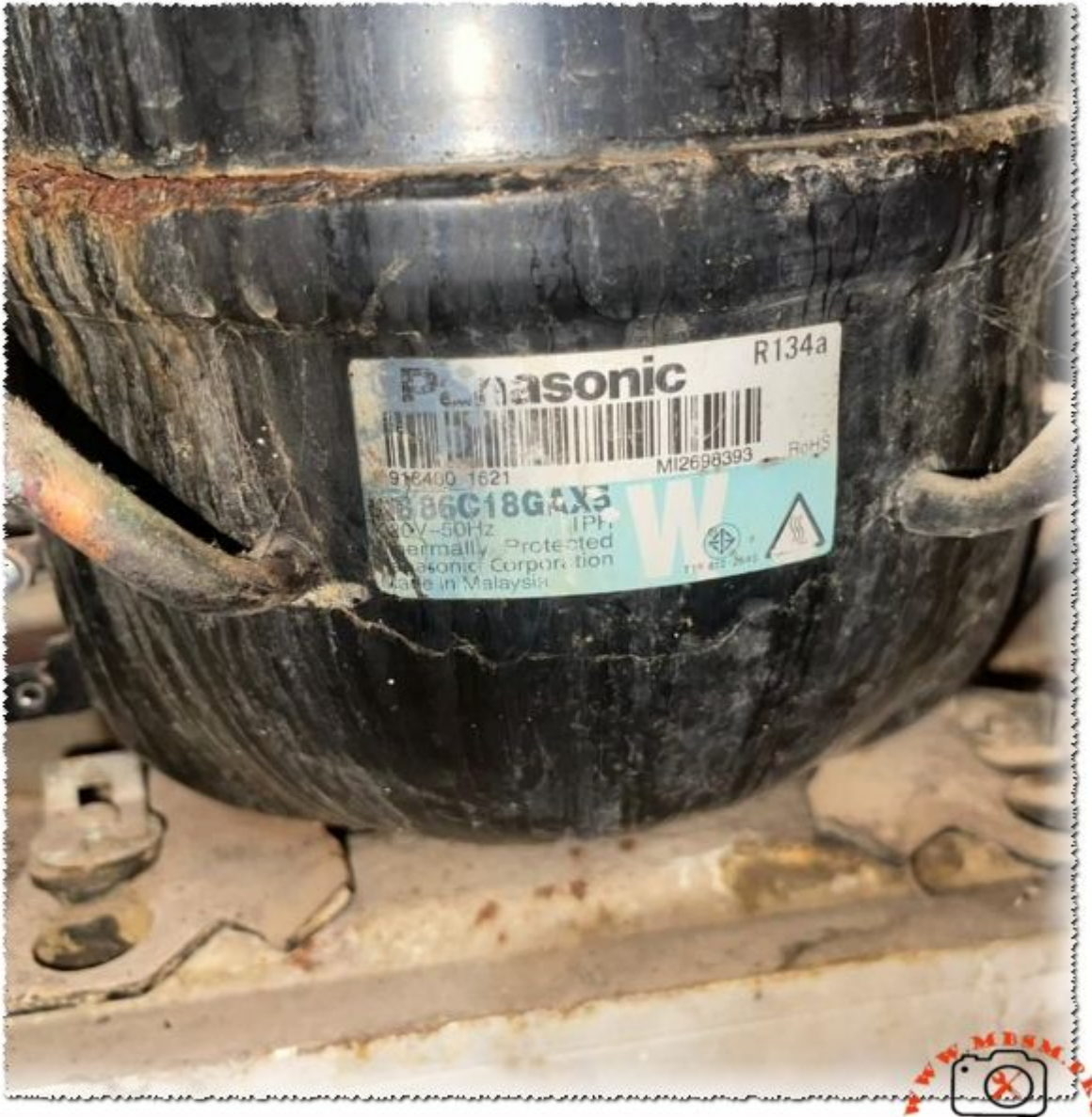
written by www.mbsm.pro | 31 January 2026

If your automatic washer fills with water but refuses to start the agitation or wash cycle, you are facing a common mechanical or electronic failure. This guide explores the primary culprits, including faulty lid switches, clogged pressure tubes, and failing drive motors, providing technical insights to help you diagnose and repair your appliance efficiently and safely.

Panasonic QB86C18GAX5: The Reliable Powerhouse of Tropical Refrigeration

Category: Refrigeration

written by www.mbsm.pro | 31 January 2026



Private Picture Copyright : WWW.MBSM.PRO

The Panasonic QB86C18GAX5 is a 1/4 HP reciprocating compressor engineered for high-efficiency Low Back Pressure (LBP) applications. Using R134a refrigerant and a displacement of 8.6cc, it delivers a cooling capacity of 201W. This guide provides technicians with essential technical data, including amperage, displacement, and a comprehensive cross-reference list for modern repairs.