

Notion , Ne jamais utiliser de , pâte
à joints, ni Téflon, ni filasse pour
, l'étanchéité des raccords , de
Climatisation

Category: Solutions, Tester ok
written by www.mbsm.pro | 22 April 2020



PictureS Mbsm Dot Pro : www.mbsm.pro

Notion , Ne jamais utiliser de , pâte à joints, ni Téflon, ni filasse pour , l'étanchéité des raccords , de Climatisation

Erreur grave ,Fuite cuivre sans isolation plastique

Category: Plomberie

written by www.mbsm.pro | 22 April 2020



PictureS Mbsm Dot Pro : www.mbsm.pro























Picture5 Mbsm Dot Pro : www.mbsm.pro

Erreur grave ,Fuite cuivre sans isolation plastique

Choice Of Capillary , EMBARACO ASPERA

Category: Tester ok

written by www.mbsm.pro | 22 April 2020

R 290 - R 404A - R 507 - MBP Applications

COMPRESSOR	FREQUENCY	DIMENSION	
		(from -20°C to -5°C evap. temp.)	(from -5°C to +15°C evap. temp.)
T6220GK NT6220U - NT6220GK	50 Hz	1.37 mm I.D. × 1.90 m	1.37 mm I.D. × 1.50 m
	60 Hz	1.37 mm I.D. × 1.65 m	1.63 mm I.D. × 1.75 m
T6222GK NT6222U - NT6222GK	50 Hz	1.37 mm I.D. × 1.60 m	1.63 mm I.D. × 1.70 m
	60 Hz	1.63 mm I.D. × 2.85 m	1.63 mm I.D. × 1.55 m
NJ9226GK NT6224U - NT6226GK	50 Hz	1.63 mm I.D. × 2.75 m	1.63 mm I.D. × 1.60 m
	60 Hz	1.63 mm I.D. × 2.35 m	1.90 mm I.D. × 1.80 m
NJ9232GK	50 Hz	1.90 mm I.D. × 2.65 m	2.16 mm I.D. × 2.05 m
	60 Hz	1.90 mm I.D. × 2.00 m	2.16 mm I.D. × 1.60 m
	50 Hz	2.16 mm I.D. × 2.45 m	2×1.63 mm I.D. × 1.70 m

PictureS Mbsm Dot Pro : www.mbsm.pro

R 290 - R 404A - R 507 - MBP Applications

COMPRESSOR	FREQUENCY	DIMENSION	
		(from -20°C to -5°C evap. temp.)	(from -5°C to +15°C evap. temp.)
T6220GK NT6220U - NT6220GK	50 Hz	1.37 mm I.D. × 1.90 m	1.37 mm I.D. × 1.50 m
	60 Hz	1.37 mm I.D. × 1.65 m	1.63 mm I.D. × 1.75 m
T6222GK NT6222U - NT6222GK	50 Hz	1.37 mm I.D. × 1.60 m	1.63 mm I.D. × 1.70 m
	60 Hz	1.63 mm I.D. × 2.85 m	1.63 mm I.D. × 1.55 m
NJ9226GK NT6224U - NT6226GK	50 Hz	1.63 mm I.D. × 2.75 m	1.63 mm I.D. × 1.60 m
	60 Hz	1.63 mm I.D. × 2.35 m	1.90 mm I.D. × 1.80 m
NJ9232GK	50 Hz	1.90 mm I.D. × 2.65 m	2.16 mm I.D. × 2.05 m
	60 Hz	1.90 mm I.D. × 2.00 m	2.16 mm I.D. × 1.60 m
	50 Hz	2.16 mm I.D. × 2.45 m	2×1.63 mm I.D. × 1.70 m

PictureS Mbsm Dot Pro : www.mbsm.pro

R 290 - R 404A - R 507 - LBP Applications

COMPRESSOR	FREQUENCY	DIMENSION	
		(from -40°C to -10°C evap. temp.)	-
NEK2121U - NEK2125U NE2125GK - NEK2125GK EMT2121U - EMT2125U EMT2125GK - EMT2125GK	50 Hz	0.91 mm I.D. × 4.0 m	-
	60 Hz	0.91 mm I.D. × 3.5 m	-
NEK2130GK - NEK2134GK NE2134GK - NEK2134U	50 Hz	0.91 mm I.D. × 3.0 m	-
	60 Hz	0.91 mm I.D. × 2.65 m	-
T2140GK - NEK2150U	50 Hz	0.91 mm I.D. × 2.7 m	-
	60 Hz	0.91 mm I.D. × 2.4 m	-
T2155GK	50 Hz	1.20 mm I.D. × 4.1 m	-
	60 Hz	1.20 mm I.D. × 3.6 m	-
T2168GK - NT2168GK	50 Hz	1.20 mm I.D. × 3.4 m	-
	60 Hz	1.20 mm I.D. × 3.0 m	-
T2178GK NT2178GK - NT2160U	50 Hz	1.20 mm I.D. × 3.1 m	-
	60 Hz	1.20 mm I.D. × 2.75 m	-
T2180GK NT2180GK - NT2170U	50 Hz	1.20 mm I.D. × 2.9 m	-
	60 Hz	1.20 mm I.D. × 2.55 m	-
NJ2192GK - NJ2192GS NT2192GK - N2180U	50 Hz	1.40 mm I.D. × 3.5 m	-
	60 Hz	1.40 mm I.D. × 3.1 m	-

PictureS Mbsm Dot Pro : www.mbsm.pro

R 290 - R 404A - R 507 - MBP Applications

COMPRESSOR	FREQUENCY	DIMENSION	
		(from -20°C to -5°C evap. temp.)	(from -5°C to +15°C evap. temp.)
T6220GK NT6220U - NT6220GK	50 Hz	1.37 mm I.D. × 1.90 m	1.37 mm I.D. × 1.50 m
	60 Hz	1.37 mm I.D. × 1.65 m	1.63 mm I.D. × 1.75 m
T6222GK NT6222U - NT6222GK	50 Hz	1.37 mm I.D. × 1.60 m	1.63 mm I.D. × 1.70 m
	60 Hz	1.63 mm I.D. × 2.85 m	1.63 mm I.D. × 1.55 m
NJ9226GK NT6224U - NT6226GK	50 Hz	1.63 mm I.D. × 2.75 m	1.63 mm I.D. × 1.60 m
	60 Hz	1.63 mm I.D. × 2.35 m	1.90 mm I.D. × 1.80 m
NJ9232GK	50 Hz	1.90 mm I.D. × 2.65 m	2.16 mm I.D. × 2.05 m
	60 Hz	1.90 mm I.D. × 2.00 m	2.16 mm I.D. × 1.60 m
	50 Hz	2.16 mm I.D. × 2.45 m	2×1.63 mm I.D. × 1.70 m

PictureS Mbsm Dot Pro : www.mbsm.pro

R 600a - LBP Applications

COMPRESSOR	FREQUENCY	DIMENSION	
		(from -30°C to -15°C evap. temp.)	(from -15°C to -5°C evap. temp.)
EMU26CLC	50 Hz	0.66 mm I.D. × 4.00 m	0.66 mm I.D. × 3.45 m
EMT26CLP	50 Hz	0.66 mm I.D. × 3.80 m	0.66 mm I.D. × 3.30 m
EMU32CLC	50 Hz	0.66 mm I.D. × 3.60 m	0.78 mm I.D. × 3.60 m
EMT32CLP	50 Hz	0.78 mm I.D. × 3.60 m	0.91 mm I.D. × 3.60 m
EMT40CLP-EMU40CLC	50 Hz	0.78 mm I.D. × 3.50 m	0.91 mm I.D. × 3.50 m
NBM1112Y - NBT1112Y NBU1112Y EMT45CLP - EMU46CLC	50 Hz	0.78 mm I.D. × 3.40 m	0.91 mm I.D. × 3.40 m
NBM1114Y - NBU1114Y NBT1114Y - EMT56CLP	50 Hz	0.78 mm I.D. × 3.20m	0.91 mm I.D. × 3.20 m
NBK1116Y - NBU1116Y NBT1116Y	50 Hz	0.78 mm I.D. × 3.00 m	0.91 mm I.D. × 3.00 m
NBK1118Y - NBU1118Y	50 Hz	0.91 mm I.D. × 3.60 m	1.06 mm I.D. × 3.60 m

PictureS Mbsm Dot Pro : www.mbsm.pro

R134a - LBP Applications

COMPRESSOR	FREQUENCY	DIMENSION	
		(from -30°C to -15°C evap. temp.)	(from -15°C to -5°C evap. temp.)
EMT22H	50 Hz	0.61 mm I.D. × 4.0 m	0.61 mm I.D. × 3.5 m
EMT36H	50 Hz	0.78 mm I.D. × 4.0 m	0.91 mm I.D. × 4.0 m
EMT43H	50 Hz	0.78 mm I.D. × 3.7 m	0.91 mm I.D. × 3.7 m
EMT49H	50 Hz	0.78 mm I.D. × 3.5 m	0.91 mm I.D. × 3.5 m
NB2116Z - NB1116Z - EMT60H	50 Hz	0.78 mm I.D. × 3.3 m	0.91 mm I.D. × 3.3 m
	60 Hz	0.78 mm I.D. × 2.75 m	0.91 mm I.D. × 2.75 m
NB 1118Z - NB 1116Z	50 Hz	0.91 mm I.D. × 4.0 m	1.06 mm I.D. × 4.0 m

PictureS Mbsm Dot Pro : www.mbsm.pro

R 290 - R 404A - R 507 - MBP Applications

COMPRESSOR	FREQUENCY	DIMENSION	
		(from -20°C to -5°C evap. temp.)	(from -5°C to +15°C evap. temp.)
NB6144GK - NEK6144GK EMT6144U - EMT6144GK	50 Hz	1.06 mm I.D. × 3.30 m	1.06 mm I.D. × 2.80 m
	60 Hz	1.06 mm I.D. × 2.80 m	1.06 mm I.D. × 2.45 m
NB6152GK - NEK6152U EMT6152U - EMT6152GK	50 Hz	1.06 mm I.D. × 3.10 m	1.06 mm I.D. × 2.55 m
	60 Hz	1.06 mm I.D. × 2.65 m	1.06 mm I.D. × 2.15 m
NB5165GK NB6165GK - NEK6165GK EMT6165U - EMT6165GK	50 Hz	1.06 mm I.D. × 2.80 m	1.20 mm I.D. × 3.30 m
	60 Hz	1.06 mm I.D. × 2.45 m	1.20 mm I.D. × 2.85 m
NE5181GK - NEK6181U NE6181GK - NEK 6181GK	50 Hz	1.20 mm I.D. × 3.00 m	1.20 mm I.D. × 2.35 m
	60 Hz	1.20 mm I.D. × 2.60 m	1.20 mm I.D. × 2.05 m
NE5195GK NE6195GK	60 Hz	1.20 mm I.D. × 2.80 m	1.27 mm I.D. × 2.65 m
NEK 6210U NE6210GK - NEK6210GK	50 Hz	1.20 mm I.D. × 2.75 m	1.27 mm I.D. × 2.45 m
	60 Hz	1.20 mm I.D. × 2.35 m	1.27 mm I.D. × 2.15 m
NEK6213U - NEK6213GK NE9213GK	50 Hz	1.27 mm I.D. × 2.55 m	1.27 mm I.D. × 1.80 m
	60 Hz	1.27 mm I.D. × 2.20 m	1.27 mm I.D. × 1.55 m
T6217GK NT6217U - NT6217GK	50 Hz	1.27 mm I.D. × 2.15 m	1.27 mm I.D. × 1.50 m
	60 Hz	1.27 mm I.D. × 1.85 m	1.37 mm I.D. × 1.60 m
T6220GK	50 Hz	1.37 mm I.D. × 1.90 m	1.37 mm I.D. × 1.50 m

PictureS Mbsm Dot Pro : www.mbsm.pro

R22 - MBP/HBP Applications

COMPRESSOR	FREQUENCY	DIMENSION	
		(from -20°C to -5°C evap. temp.)	(from -5°C to +10°C evap. temp.)
T6217E	50 Hz	1.27 mm I.D. × 2.3 m	1.27 mm I.D. × 1.6 m
T6220E	50 Hz	1.37 mm I.D. × 2.0 m	1.37 mm I.D. × 1.6 m
NJ9226E - NJ9226P - NJ7225F	50 Hz	1.63 mm I.D. × 2.9 m	1.63 mm I.D. × 1.7 m
	60 Hz	1.63 mm I.D. × 2.5 m	1.90 mm I.D. × 1.9 m
NJ7228F - NJ7228P - NJ7228E	50 Hz	1.63 mm I.D. × 2.4 m	1.90 mm I.D. × 1.9 m
	60 Hz	1.90 mm I.D. × 2.5 m	2.16 mm I.D. × 2.0 m
NJ9232E - NJ9232P - NJ7231F NJ7231P	50 Hz	1.90 mm I.D. × 2.8 m	2.16 mm I.D. × 2.2 m
	60 Hz	1.90 mm I.D. × 2.15 m	2.16 mm I.D. × 1.7 m
NJ9238E - NJ9238P NJ7238E - NJ7238P	50 Hz	2.16 mm I.D. × 2.6 m	2 × 1.63 mm I.D. × 1.8 m
	60 Hz	2.16 mm I.D. × 2.0 m	2 × 2.16 mm I.D. × 2.5 m
NI7240E - NI7240D	50 Hz	2.16 mm I.D. × 2.3 m	2 × 2.16 mm I.D. × 2.8 m

PictureS Mbsm Dot Pro : www.mbsm.pro

R134a - HBP Applications

COMPRESSOR	FREQUENCY	DIMENSION	
		(from -15°C to -5°C evap. temp.)	(from -5°C to +10°C evap. temp.)
T6213Z	50 Hz	1.37 mm I.D. × 3.5 m	1.50 mm I.D. × 3.3 m
	60 Hz	1.37 mm I.D. × 3.1 m	1.50 mm I.D. × 2.9 m
T6215Z - T6217Z	50 Hz	1.37 mm I.D. × 3.1 m	1.50 mm I.D. × 2.9 m
	60 Hz	1.37 mm I.D. × 2.7 m	1.50 mm I.D. × 2.5 m
NJ6220Z - NJ6220ZX	50 Hz	1.63 mm I.D. × 3.6 m	1.78 mm I.D. × 3.3 m
	60 Hz	1.63 mm I.D. × 3.0 m	1.78 mm I.D. × 2.75 m
NJ6226Z - NJ6226ZX	50 Hz	2 × 1.50 mm I.D. × 4.0 m	2 × 1.63 mm I.D. × 3.0 m
	60 Hz	2 × 1.50 mm I.D. × 3.4 m	2 × 1.63 mm I.D. × 2.5 m

PictureS Mbsm Dot Pro : www.mbsm.pro

R 22 - Air Conditioning Applications

COMPRESSOR	FREQUENCY	DIMENSION	
NE7213E	50 Hz	1.24 mm I.D. × 1.05 m	–
	60 Hz	1.24 mm I.D. × 1.0 m	–
NE7215E	50 Hz	1.24 mm I.D. × 1.0 m	–
	60 Hz	1.24 mm I.D. × 0.95 m	–
T7220E - T7220F	50 Hz	1.37 mm I.D. × 1.0 m	–
	60 Hz	1.37 mm I.D. × 0.95 m	–
T7223E - T7223F	50 Hz	1.5 mm I.D. × 1.05 m	–
	60 Hz	1.5 mm I.D. × 1.0 m	–
NJ7225E - NJ7225F	50 Hz	2.16 mm I.D. × 2.0 m	–
	60 Hz	2.16 mm I.D. × 1.8 m	–
NJ7228E - NJ7228F	50 Hz	2.16 mm I.D. × 1.9 m	–
	60 Hz	2.16 mm I.D. × 1.7 m	–
NJ7231E - NJ7231F - NJ7231P	50 Hz	2.16 mm I.D. × 1.6 m	–
	60 Hz	2.16 mm I.D. × 1.4 m	–
NJ7238E - NJ7238P	50 Hz	2 × 2.16 mm I.D. × 2.5 m	–
	60 Hz	2 × 2.16 mm I.D. × 2.3 m	–
	50 Hz	2 × 2.16 mm I.D. × 2.3 m	–

PictureS Mbsm Dot Pro : www.mbsm.pro

R134a - HBP Applications

COMPRESSOR	FREQUENCY	DIMENSION	
		(from -15°C to -5°C evap. temp.)	(from -5°C to +10°C evap. temp.)
NB5125Z	50 Hz	0.78 mm I.D. × 2.5 m	0.91 mm I.D. × 2.4 m
	60 Hz	0.78 mm I.D. × 2.1 m	0.91 mm I.D. × 2.0 m
NB5128Z	50 Hz	0.78 mm I.D. × 2.4 m	0.91 mm I.D. × 2.3 m
	60 Hz	0.78 mm I.D. × 2.0 m	0.91 mm I.D. × 1.9 m
NB5132Z - NB6132Z	50 Hz	0.78 mm I.D. × 2.3 m	0.91 mm I.D. × 2.2 m
	60 Hz	0.78 mm I.D. × 1.9 m	0.91 mm I.D. × 1.8 m
NB5144Z - NB6144Z NEK5144Z - EMT6144Z	50 Hz	0.91 mm I.D. × 2.9 m	1.06 mm I.D. × 2.7 m
	60 Hz	0.91 mm I.D. × 2.4 m	1.06 mm I.D. × 2.3 m
NE5160Z - NE6160Z NEK6160Z - EMT6160Z	50 Hz	0.91 mm I.D. × 2.4 m	1.06 mm I.D. × 2.5 m
	60 Hz	0.91 mm I.D. × 2.1 m	1.06 mm I.D. × 2.2 m
NE5170Z - NE6170Z NEK5170Z - NEK6170Z EMT6170Z	50 Hz	1.06 mm I.D. × 3.2 m	1.27 mm I.D. × 3.3 m
	60 Hz	1.06 mm I.D. × 2.65 m	1.27 mm I.D. × 2.75 m
NE5187Z - NE6187Z NEK6187Z	50 Hz	1.24 mm I.D. × 4.0 m	1.37 mm I.D. × 3.3 m
	60 Hz	1.24 mm I.D. × 3.4 m	1.37 mm I.D. × 2.9 m
NE6210Z - NEK6210Z	60 Hz	1.37 mm I.D. × 3.5 m	1.50 mm I.D. × 3.3 m
NEK6212Z	60 Hz	1.37 mm I.D. × 3.3 m	1.50 mm I.D. × 3.1 m
	50 Hz	1.37 mm I.D. × 3.5 m	1.50 mm I.D. × 3.3 m

PictureS Mbsm Dot Pro : www.mbsm.pro

R22 - MBP/HBP Applications

COMPRESSOR	FREQUENCY	DIMENSION	
		(from -20°C to -5°C evap. temp.)	(from -5°C to +10°C evap. temp.)
NB6144E	50 Hz	1.06 mm I.D. × 3.5 m	1.06 mm I.D. × 3.0 m
	60 Hz	1.06 mm I.D. × 3.0 m	1.06 mm I.D. × 2.6 m
NB6152E	50 Hz	1.06 mm I.D. × 3.3 m	1.06 mm I.D. × 2.7 m
	60 Hz	1.06 mm I.D. × 2.8 m	1.06 mm I.D. × 2.3 m
NB5165E - NB6152E	50 Hz	1.06 mm I.D. × 3.0 m	1.20 mm I.D. × 3.5 m
	60 Hz	1.06 mm I.D. × 2.6 m	1.20 mm I.D. × 3.0 m
NE5181E - NE6181E	50 Hz	1.20 mm I.D. × 3.2 m	1.20 mm I.D. × 2.5 m
	60 Hz	1.20 mm I.D. × 2.75 m	1.20 mm I.D. × 2.2 m
NE5195E - NE6195E	60 Hz	1.20 mm I.D. × 3.0 m	1.27 mm I.D. × 2.8 m
NE5195E - NE6210E	50 Hz	1.20 mm I.D. × 2.9 m	1.27 mm I.D. × 2.6 m
	60 Hz	1.20 mm I.D. × 2.5 m	1.27 mm I.D. × 2.3 m
NE6212E - NE7212E	50 Hz	1.27 mm I.D. × 2.7 m	1.27 mm I.D. × 1.9 m

PictureS Mbsm Dot Pro : www.mbsm.pro

R22 - LBP Applications			
COMPRESSOR	FREQUENCY	DIMENSION	
		(from -30°C to -5°C evap. temp.)	-
NE2125E	50 Hz	0.91 mm I.D. × 3.2 m	-
	60 Hz	0.91 mm I.D. × 2.85 m	-
NE2134E	50 Hz	0.91 mm I.D. × 2.8 m	-
	60 Hz	0.91 mm I.D. × 2.5 m	-
T2140E	50 Hz	0.91 mm I.D. × 2.6 m	-
	60 Hz	0.91 mm I.D. × 2.3 m	-
T2155E	50 Hz	1.20 mm I.D. × 3.9 m	-
	60 Hz	1.20 mm I.D. × 3.5 m	-
T2168E	50 Hz	1.20 mm I.D. × 3.3 m	-
	60 Hz	1.20 mm I.D. × 2.8 m	-
NJ2178E	50 Hz	1.20 mm I.D. × 3.0 m	-

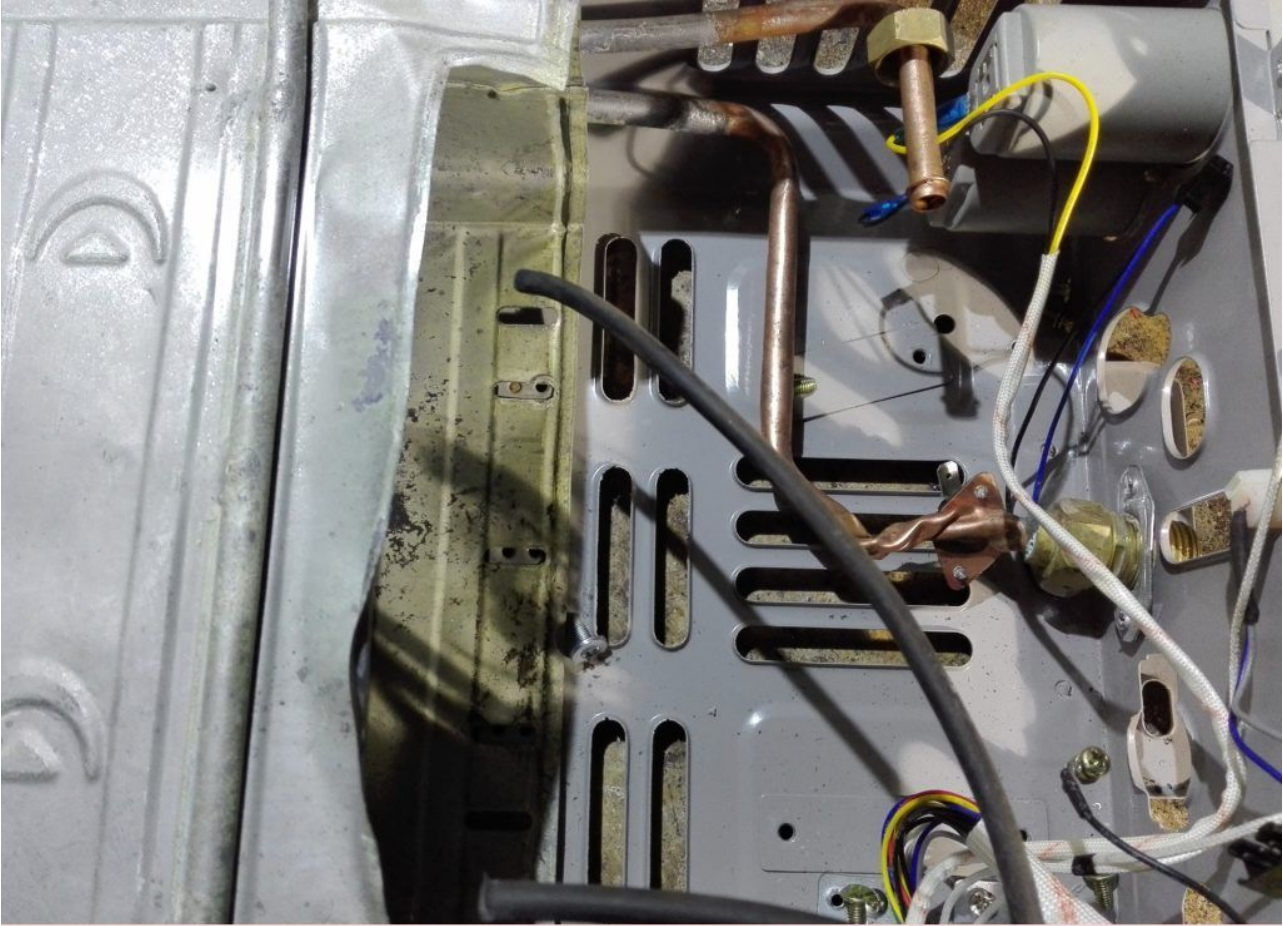
PictureS Mbsm Dot Pro : www.mbsm.pro

Choice Of Capillary , EMBARACO ASPERA
إختيار الكابيلاري لشركة EMBARACO ASPERA

Erreur Grave montage chauffe bain Électronique

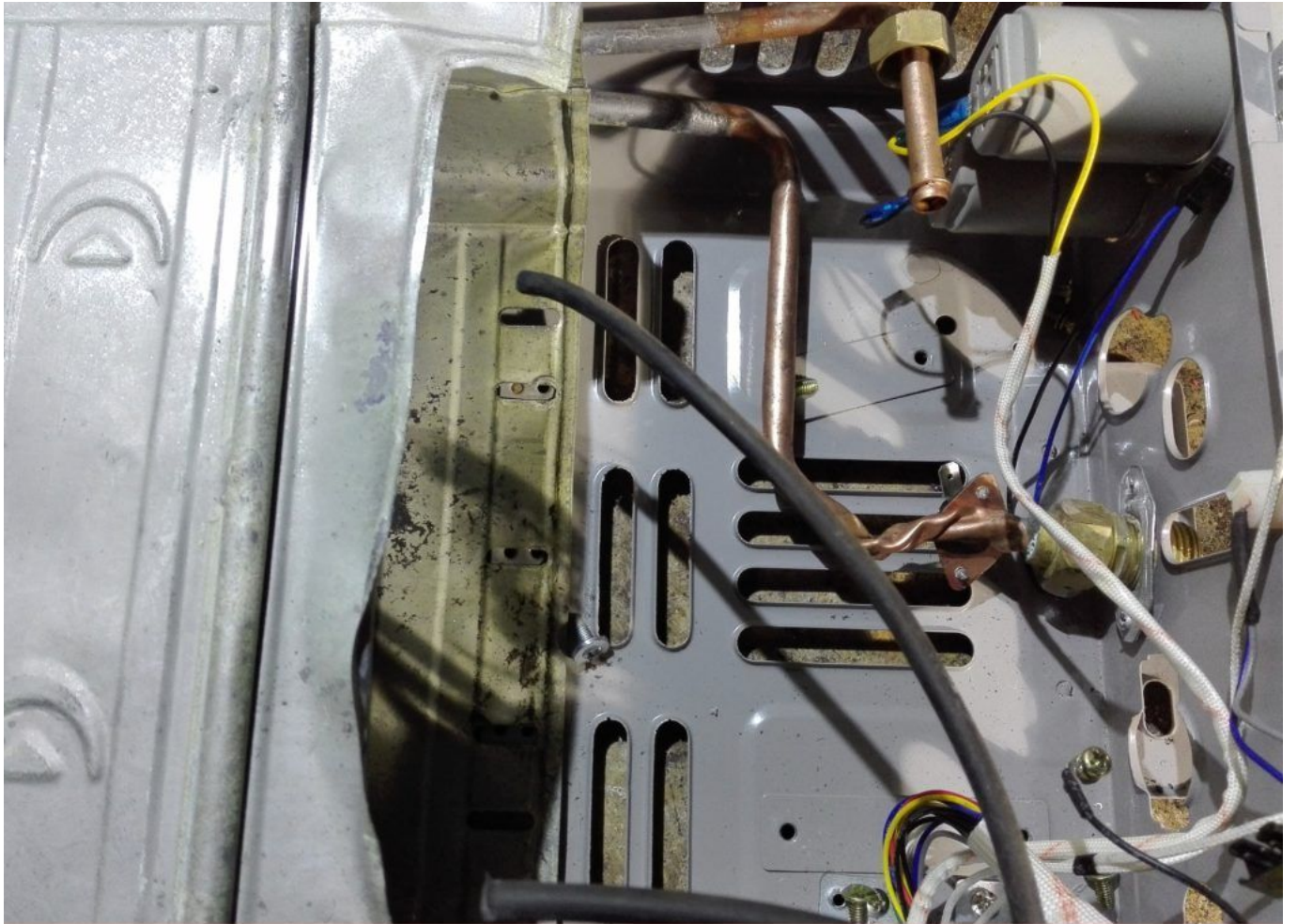
Category: Solutions

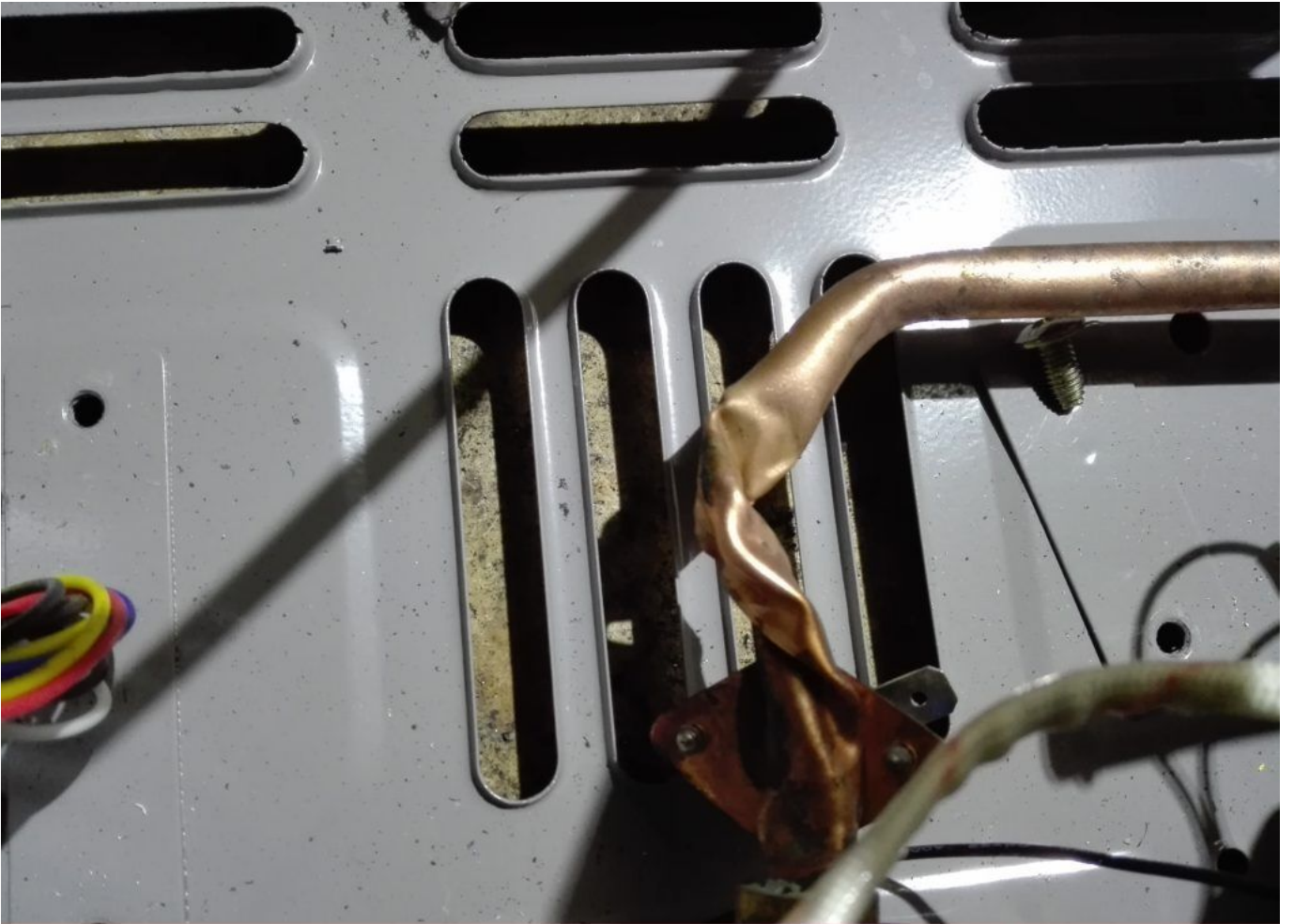
written by www.mbsm.pro | 22 April 2020

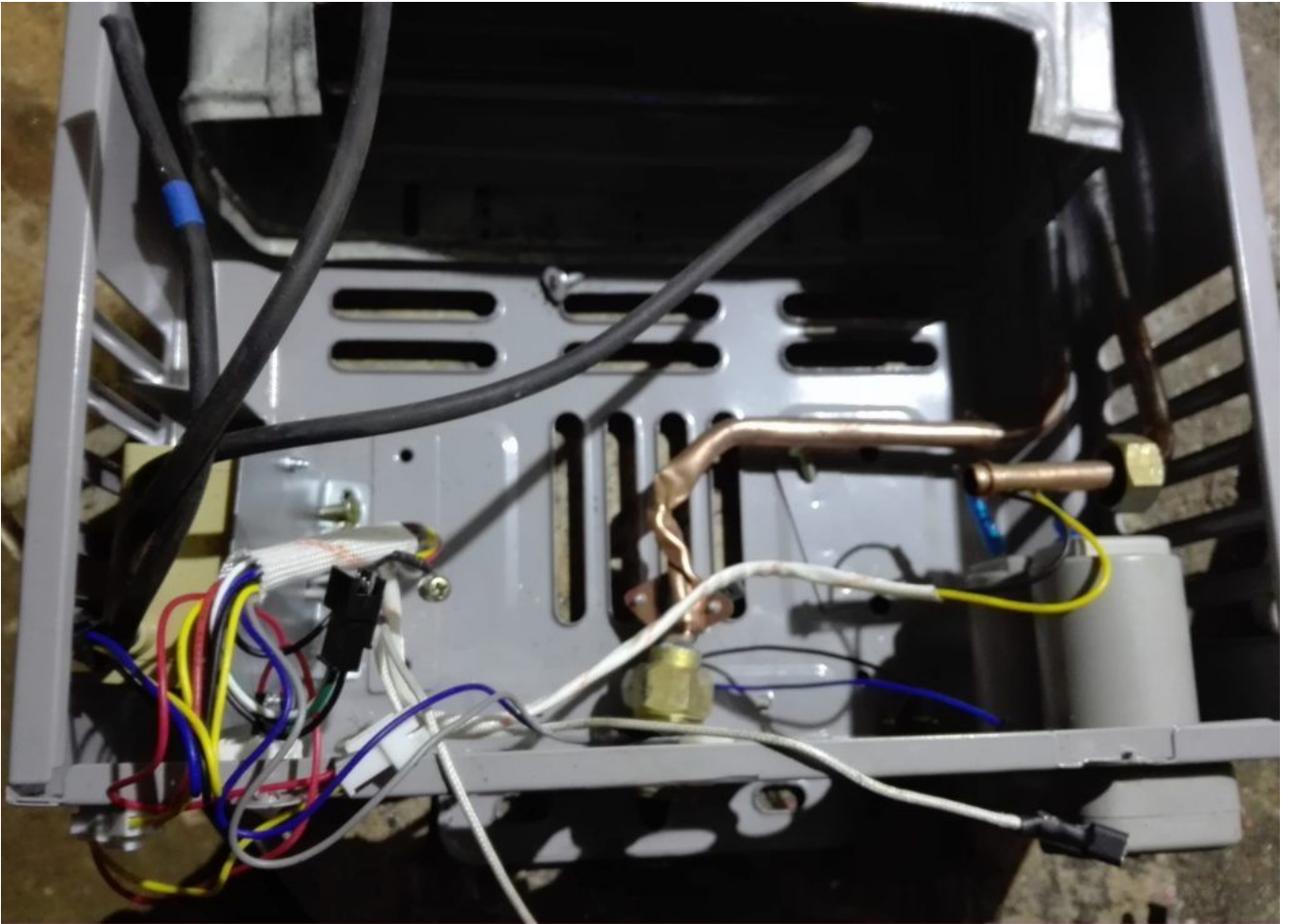


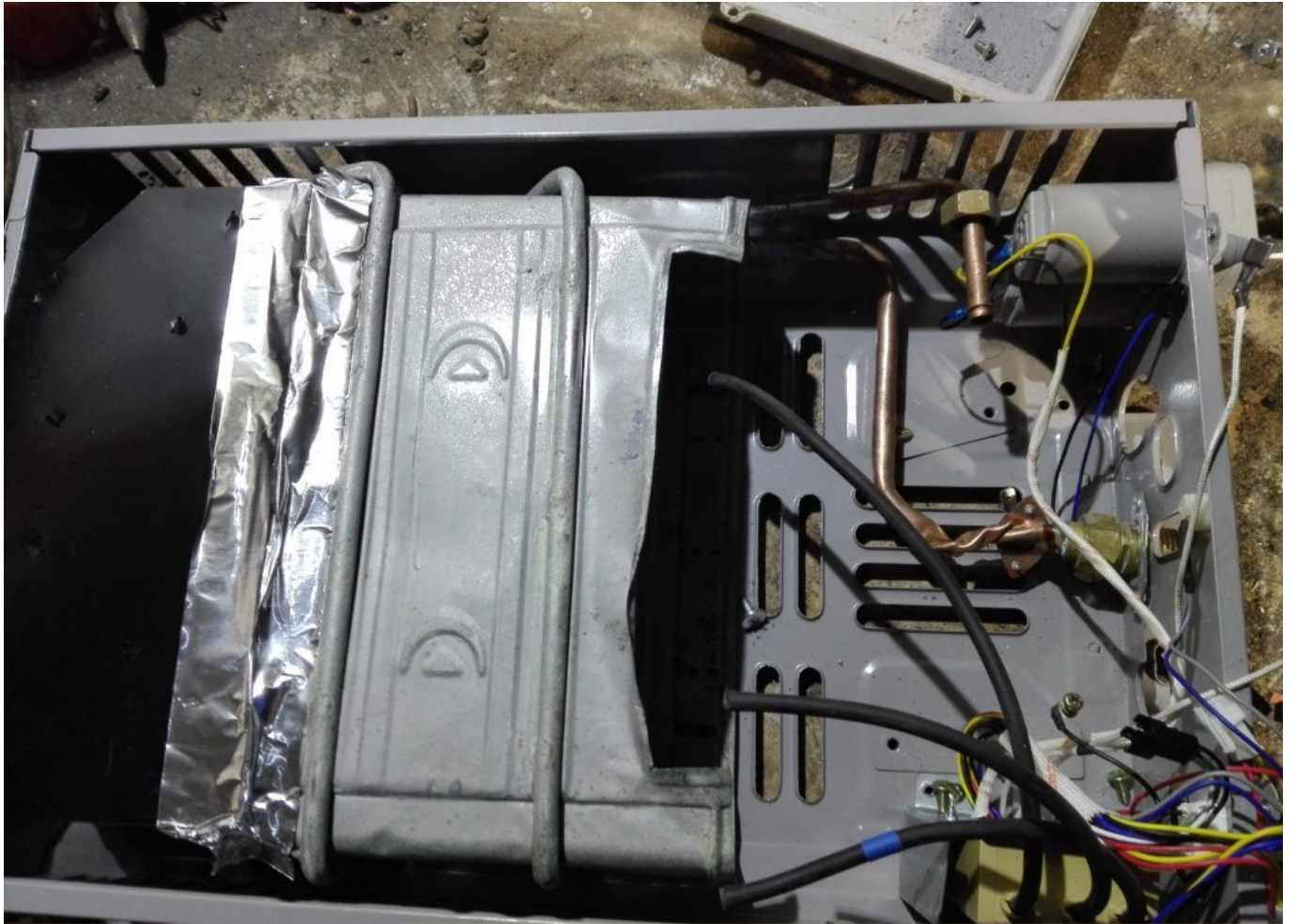
Picture5 Mbsm Dot Pro : www.mbsm.pro

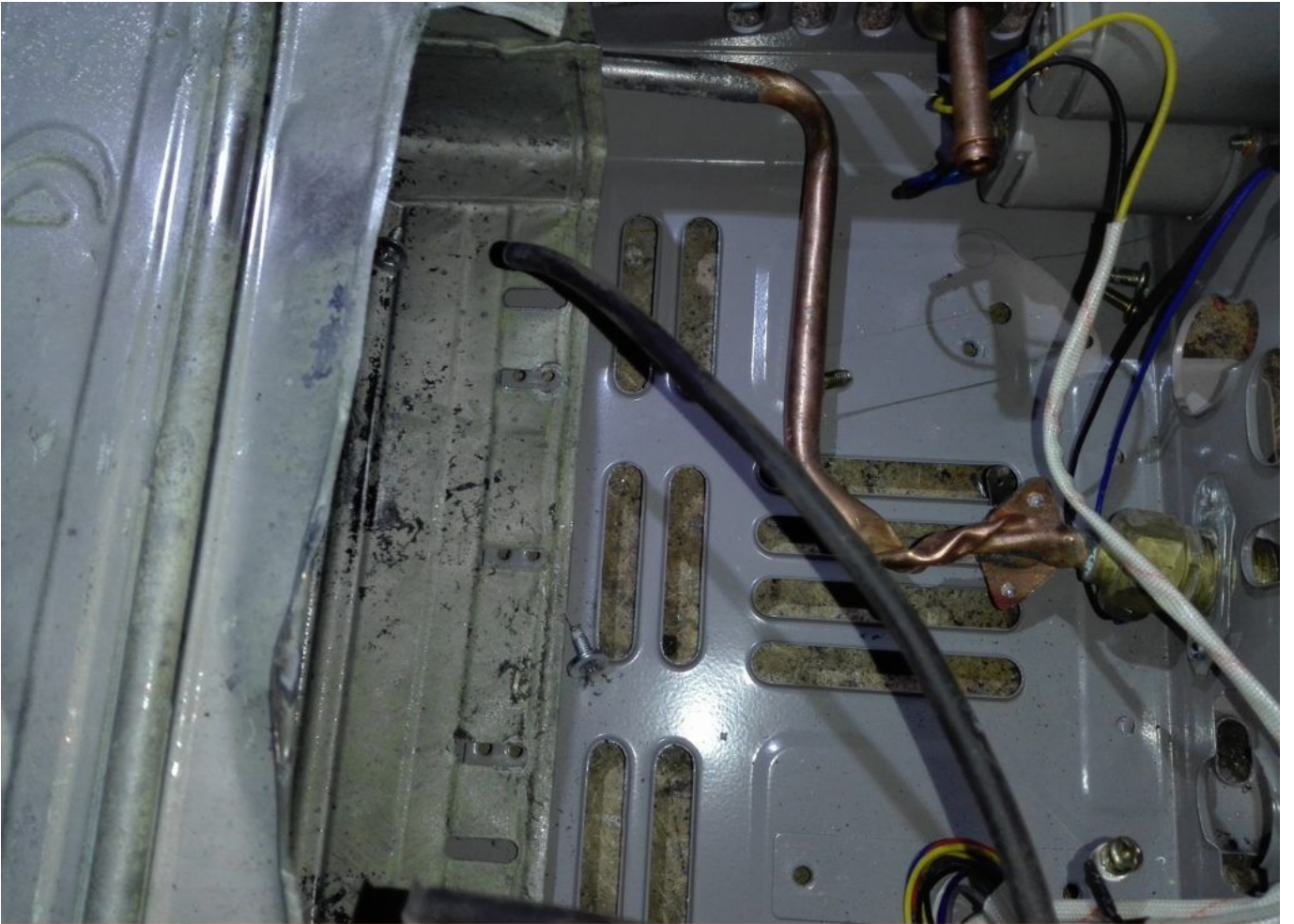
خطأ كبير في تركيب سخان الحمام
Serious bath heater mounting error

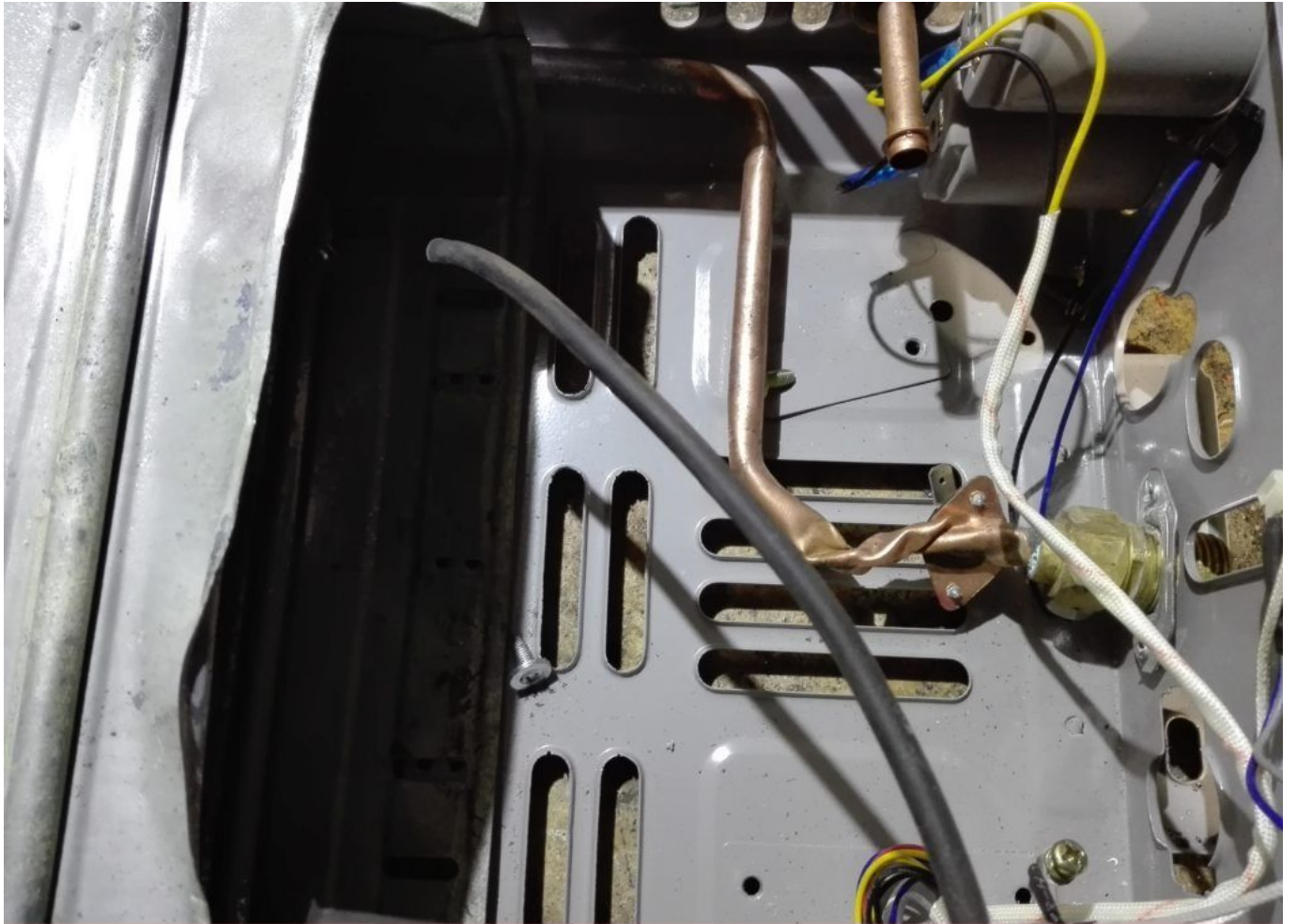


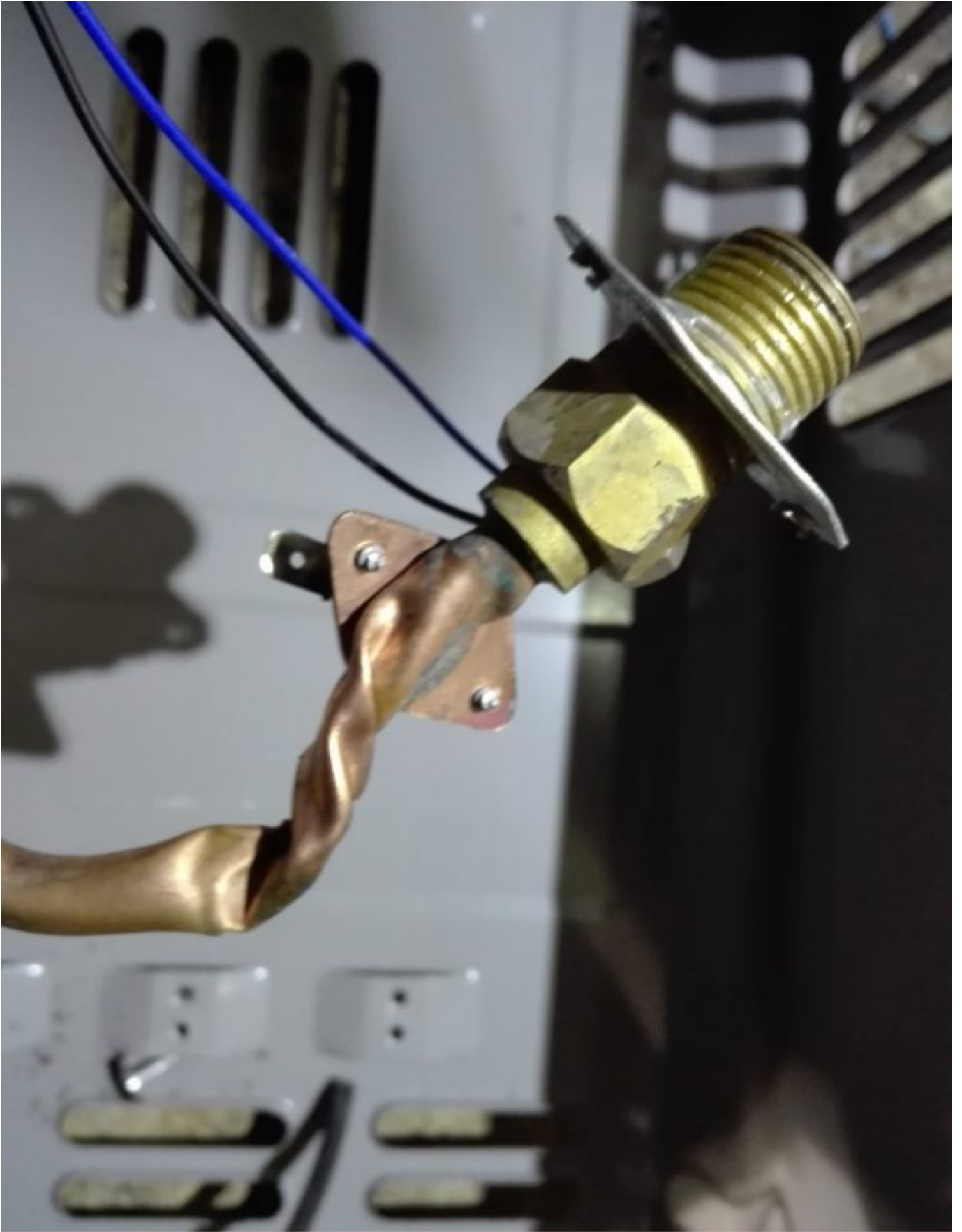


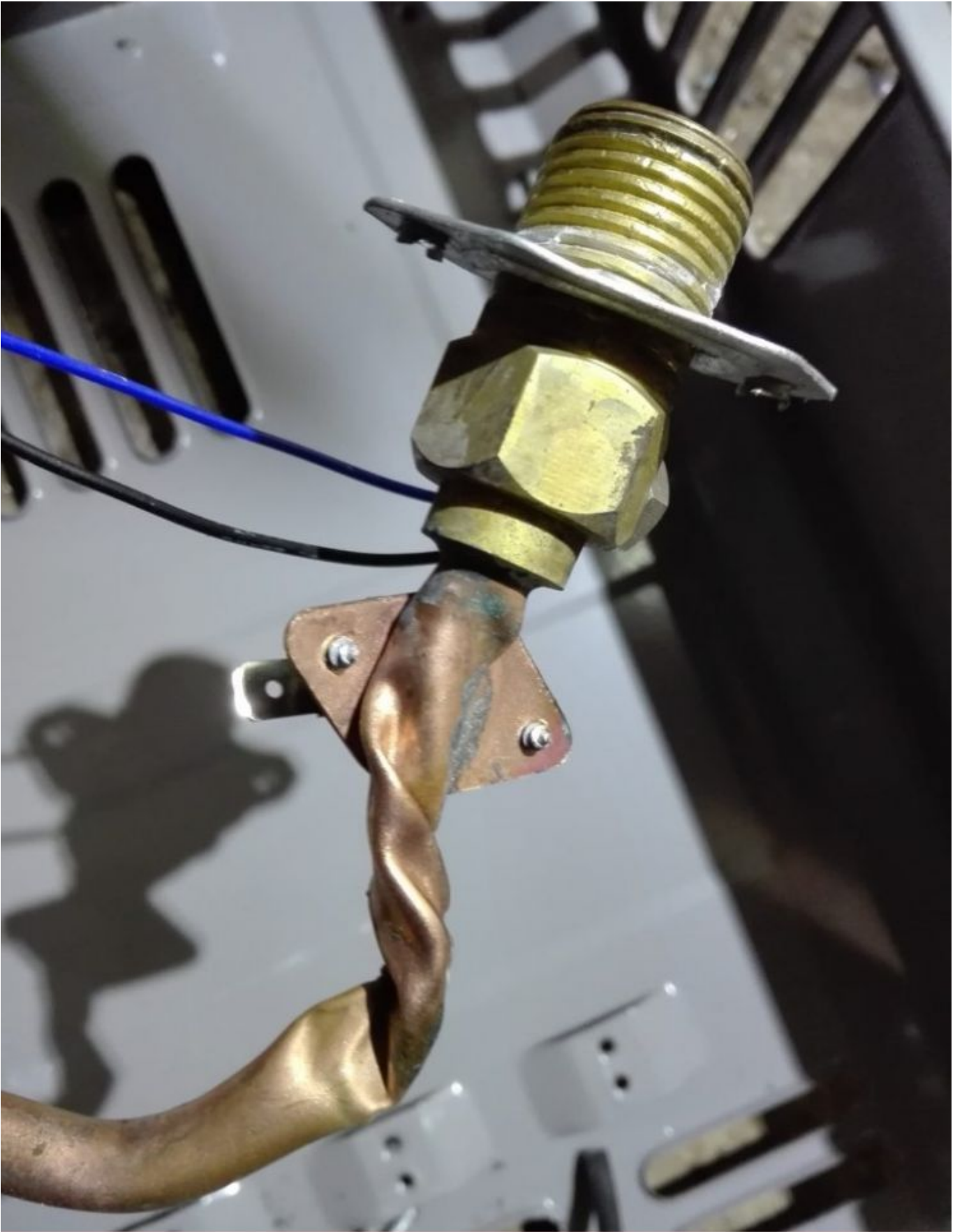


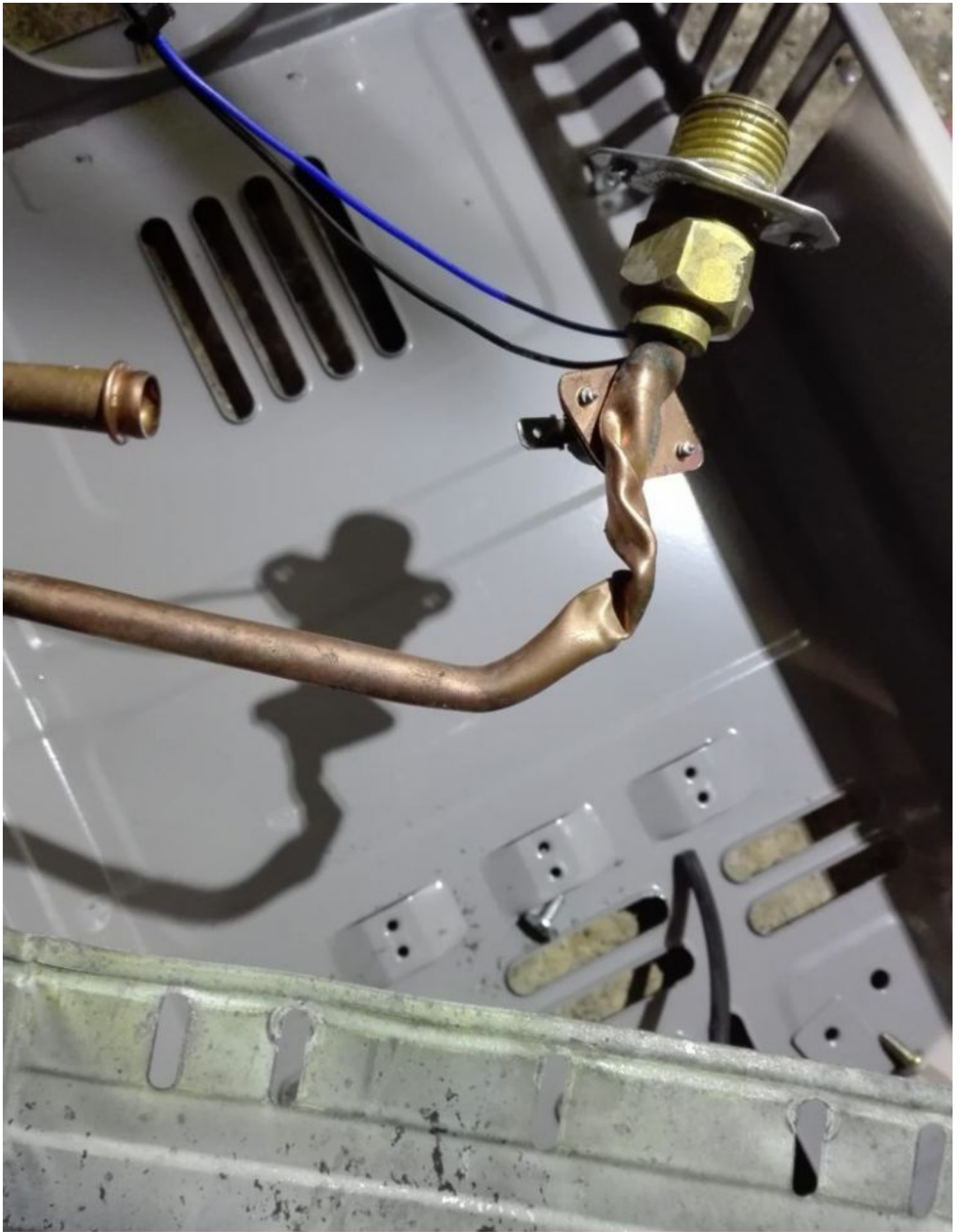












Erreur de maintenance chauffe eau solaire

Category: Solutions

written by www.mbsm.pro | 22 April 2020



PictureS Mbsm Dot Pro : www.mbsm.pro

خطأ صيانة سخان المياه بالطاقة الشمسية

Solar water heater maintenance error











PictureS Mbsm Dot Pro : www.mbsm.pro

Cosse et Fiche plat

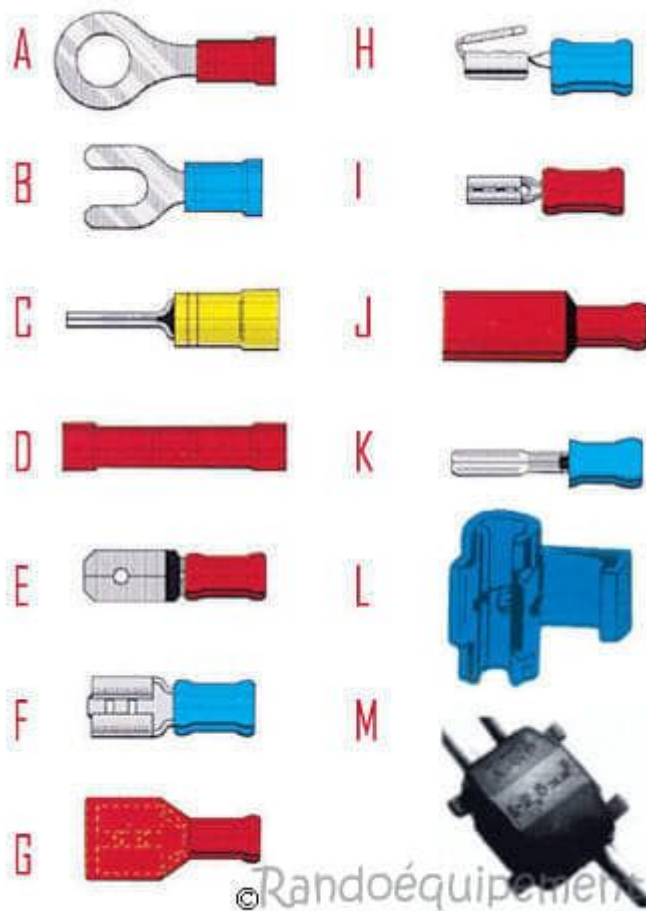
Category: Technologie

written by www.mbsm.pro | 22 April 2020



PictureS Mbsm Dot Pro : www.mbsm.pro

On trouve également sur le marché des **cosses** pour batterie qui diffèrent selon leur surface de contact avec la batterie. Dans cette catégorie d'accessoires de connexion, on peut trouver des boîtes de dérivation, du ruban adhésif ou des bornes et des dominos.



© Randoéquipement

PictureS Mbsm Dot Pro : www.mbsm.pro



PictureS Mbsm Dot Pro : www.mbsm.pro



PictureS Mbsm Dot Pro : www.mbsm.pro



Mbsm Dot Pro : www.mbsm.pro



Mbsm Dot Pro : www.mbsm.pro



PictureS Mbsm Dot Pro : www.mbsm.pro



PictureS Mbsm Dot Pro : www.mbsm.pro



PictureS Mbsm Dot Pro : www.mbsm.pro



PictureS Mbsm Dot Pro : www.mbsm.pro



Mbsm Dot Pro : www.mbsm.pro



Mbsm Dot Pro : www.mbsm.pro

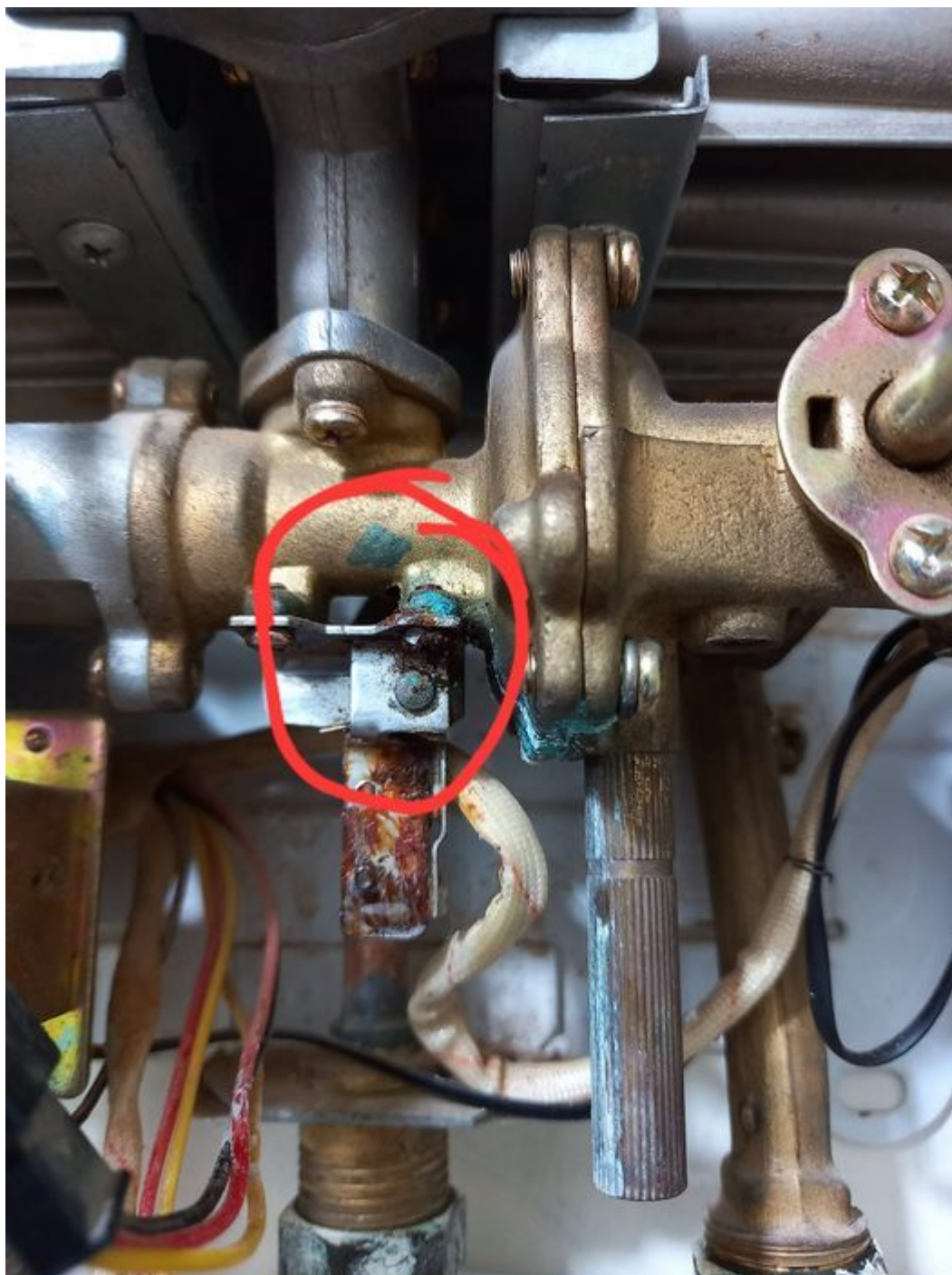


PictureS Mbsm Dot Pro : www.mbsm.pro

Core Mécanique du chauffe-eau Électronique 10 litre

Category: Technologie

written by www.mbsm.pro | 22 April 2020



Private Picture Copyright : WWW.MBSM.PRO

Core Mécanique du chauffe-eau Électronique 10 litre

**COMPRESSEUR ZEL , 200w , HDL200A,
R600a , LBP , 1/4 hp**

Category: Technologie, Tester ok
written by www.mbsm.pro | 22 April 2020



Private Picture Copyright : WWW.MBSM.PRO

Model	Motor	Disp.	Power	Motor type	Freq.	Cooling capacity	Input power	Input power (RC)	COP	COP (RC)	Run capacitor	Height	Netweight
GDL145D	Cu	4.4	1/8	RSIR/RSCR	60	145	94	87	1.55	1.67	10	161	7.3
GDL175D	Cu	5.3	1/6	RSIR/RSCR	60	175	112	106	1.56	1.65	10	161	7.3
GML140A	Al	4.9	1/6	RSIR	50	140	112	0	1.25	0	0	152	6.3
GML160A	Al	5.7	1/6	RSIR	50	160	128	0	1.25	0	0	161	6.9
GML180A	Al	6.5	1/5	RSIR	50	180	144	0	1.25	0	0	161	7.1
GML200A	Al	7	1/5	RSIR	50	200	160	0	1.25	0	0	164	7.3
GML145D	Al	4.4	1/7	RSIR/RSCR	60	145	97	92	1.5	1.57	10	164	7.1
GML175D	Al	4.9	1/6	RSIR/RSCR	60	175	118	112	1.48	1.56	10	164	7.1
GPL175D*	Cu	4.9	1/7	CSCR	60	175		97		1.8	10	161	7.6
GXL175D	Cu	4.9	1/7	RSCR	60	175		101		1.73	10	164	7.6

PictureS Mbsm Dot Pro : www.mbsm.pro

TECHNICAL CHARACTERISTICS

SCHEME COMPRESSORS

OF

ELECTRIC DIAGRAMS

ASSEMBLY

TECHNICAL SCHEMES

Model	Motor	Speed range	Displ., cm ³	Motor type	Freq. hz	Cooling Capacity, w -23.3 °C/(+7.2 °C)*	Input Power, BT		COP, w/w		Run Capacitor, µF	Height, mm	Net Weight, kg	Type of cooling, S/F
							without RC	with RC	without RC	with RC				
HDL100A	Al	-	5,7	RSCR	50	98	-	60	-	1,64	2,5	161	6,9	-
HDL100A(I)	Cu/Al	-	5,7	RSCR	50	98	-	57	-	1,72	2,5	164	7,2	-
HDL125A	Al	-	7,0	RSCR	50	123	-	72	-	1,70	2,5	164	7,2	-
HDL125A (I)	Cu/Al	-	7,0	RSCR	50	123	-	69	-	1,79	2,5	164	7,2	-
HDL140A	Al	-	8,0	RSCR	50	140	-	80	-	1,74	2,5	164	7,2	-
HDL160A	Al	-	9,2	RSCR	50	160	-	90	-	1,77	3	164	7,2	-
HDL170A	Al	-	9,5	RSCR	50	172	-	101	-	1,70	4	164	7,2	-
HDL190A	Cu/Al	-	10,5	RSCR	50	185	-	106	-	1,75	4	164	7,2	-
HDL200A	Cu/Al	-	12,0	RSCR	50	200	-	118	-	1,70	4	164	7,2	-
HDL80A	Al	-	4,9	RSCR	50	80	-	49	-	1,62	2	161	6,9	-
HML100A	Al	-	5,7	RSCR	50	98	-	71	-	1,39	2	152	6,3	-
HML125A	Al	-	7,0	RSCR	50	125	-	83	-	1,45	2	152	6,3	-
HML140A	Al	-	8,0	RSCR	50	140	-	90	-	1,56	3	152	6,3	-
HML170A	Al	-	9,5	RSCR	50	165	-	114	-	1,45	3	161	6,9	-
HML200A	Al	-	12,0	RSCR	50	200	-	138	-	1,45	4	164	7,2	-
HML80A	Al	-	4,9	RSCR	50	80	-	55	-	1,45	2	152	6,3	-
HPL100A	Cu	-	5,7	CSCR	50	100	-	51	-	1,96	2	161	7,3	-
HPL125A	Cu	-	7,0	CSCR	50	125	-	64	-	1,96	2	161	7,3	-
HPL140A	Cu	-	8,0	CSCR	50	145	-	74	-	1,95	2	161	7,3	-
HXL100A	Cu	-	5,7	RSCR	50	98	-	52	-	1,87	2	161	7,3	-
HXL125A	Cu	-	7,0	RSCR	50	123	-	65	-	1,90	2	161	7,3	-
HXL140A	Cu	-	8,0	RSCR	50	140	-	73	-	1,91	2	161	7,3	-
HXL170A	Cu	-	9,3	RSCR	50	175	-	93	-	1,88	2	161	7,3	-
HXL190A	Cu	-	10,5	RSCR	50	190	-	103	-	1,85	3	164	7,3	-
HXL190A (B)	Cu	-	12,0	RSCR	50	200	-	108	-	1,85	3	164	7,3	-
HXL50A	Cu	-	4,9	RSCR	50	53	-	31	-	1,70	1,5	164	7,3	-

PictureS Mbsm Dot Pro : www.mbsm.pro



Private Picture Copyright : WWW.MBSM.PRO

C 58708690

ZEL HDL200A 16-44
220-240V 50Hz
SUCTION >
8 269 0902610 5
ZANUSSI ELETTROMECCANICA COMPRESSOR







PictureS Mbsm Dot Pro : www.mbsm.pro

كباسات ZEL ومواصفاتها مع مقاسات الثلاجات والفریزارات المختلفة

موديل الثلاجة	الحجم بالقدم 3	الحجم باللتر	قدرة الضاغط							
			R134a			R600a				
			Model	W	HP	Model	W	HP		
LBP										
كباسات التجميد										
Domestic single door 	4	5	113	160	GML70G	72	1/12	HMM70A	70	1/12
	6	7	170	198	GML70G	72	1/10	HMM70A	70	1/10
	8	9	226	254	GML90G	94	1/8	HMM90A	90	1/8
	9	13	283	370	GML125G	125	1/6	HML125AT	130	1/6
Domestic double door 	9	12	226	340	GML140AT	148	1/5	HML140AT	140	1/5
	13	17	370	481	GML200AT	195	1/4	HML200A	200	1/4
	17	22	509	623	GTH88AA	240	1/3	HKD14AA	240	1/3
Upright and chest freezer 	4	6	113	120	GML125G	125	1/6	HML125AT	130	1/6
	6	8	198	226	GML140AT	148	1/5	HML140AT	140	1/5
	8	12	254	340	GML200AT	195	1/4	HML200A	200	1/4
	12	18	370	509	GTH88AA	240	1/3	HKD14AA	240	1/3

PictureS Mbsm Dot Pro : www.mbsm.pro

GML70G,
GML90G,
GML125G,
HMM70A,
HMM90A,
HML125AT,
GML140AT
GML200AT,
GTH88AA,
HML140AT,
HML200A,
HKD14AA,
GML125G,
GTH88AA,

GDL145D,
GDL175D,
GML140A,
GML160A,
GML180A,
GML200A,
GML145D,
GML175D,
GPL175D*,
GXL175D,
GXL200D,

R600a**مواصفات قياسات التجميد LBP**

Model الموديل	Voltage الفولت	Hz التردد	Cooling Capacity سعة التبريد - القدرة التبريدية		
			W	HP	
HMM70A	220 - 240	50	70	0.094	1/10
HMM80A	220 - 240	50	80	0.107	1/10
HMM90A	220 - 240	50	90	0.121	1/8
HMM100A	220 - 240	50	100	0.134	1/8
HML100A	220 - 240	50	103	0.138	1/8
HML125A	220 - 240	50	121	0.162	1/6
HML125AT	220 - 240	50	130	0.174	1/6
HML140AT	220 - 240	50	140	0.188	1/6
HML155A	220 - 240	50	155	0.208	1/5
HML170AT	220 - 240	50	170	0.228	1/5
HML190A	220 - 240	50	190	0.255	1/4
HML200A	220 - 240	50	200	0.268	1/4

R134a**كباسات التجميد LBP**

Model الموديل	Voltage الفولت	Hz التردد	Cooling Capacity سعة التبريد - القدرة التبريدية		
			W	HP	
GML70G	220 - 240	50 - 60	72	0.097	1/12
GML80G	220 - 240	50 - 60	80	0.107	1/10
GML90G	220 - 240	50 - 60	94	0.126	1/8
GML110AT	220 - 240	50	113	0.151	1/7
GML125G	220 - 240	50 - 60	122	0.164	1/6
GML140G	220 - 240	50 - 60	136	0.182	1/6
GML140AT	220 - 240	50	148	0.198	1/5
GML180G	220 - 240	50 - 60	162	0.217	1/5
GML200AT	220 - 240	50	195	0.261	1/4
GTH88AA	220 - 240	50	240	0.322	1/3
GTH93AA	220 - 240	50	260	0.349	1/3
GTM93AA	220 - 240	50	280	0.375	3/8
GTM10AA	220 - 240	50	300	0.402	3/8+

PictureS Mbsm Dot Pro : www.mbsm.pro**Lambda/Zeta/Micro**PictureS Mbsm Dot Pro : www.mbsm.pro

Tau



PictureS Mbsm Dot Pro : www.mbsm.pro

كباسات ZEL ومواصفاتها مع مقاسات الثلاجات والفرزيرات المختلفة

موديل الثلاجة	الحجم بالقدم 3	الحجم باللتر	قدرة الضاغط							
			R134a			R600a				
			Model	W	HP	Model	W	HP		
LBP كباسات التجميد										
Domestic single door 	4	5	113	160	GML70G	72	1/12	HMM70A	70	1/12
	6	7	170	198	GML70G	72	1/10	HMM70A	70	1/10
	8	9	226	254	GML90G	94	1/8	HMM90A	90	1/8
	9	13	283	370	GML125G	125	1/6	HML125AT	130	1/6
Domestic double door 	9	12	226	340	GML140AT	148	1/5	HML140AT	140	1/5
	13	17	370	481	GML200AT	195	1/4	HML200A	200	1/4
	17	22	509	623	GTH88AA	240	1/3	HKD14AA	240	1/3
Upright and chest freezer 	4	6	113	120	GML125G	125	1/6	HML125AT	130	1/6
	6	8	198	226	GML140AT	148	1/5	HML140AT	140	1/5
	8	12	254	340	GML200AT	195	1/4	HML200A	200	1/4
	12	18	370	509	GTH88AA	240	1/3	HKD14AA	240	1/3

PictureS Mbsm Dot Pro : www.mbsm.pro



Variable Speed Range 变频系列

R600a

型号	电机	转速范围	排气量	电机类型	制冷量	输入功率	性能系数	高度	重量	认证
Model	Motor	Speed Range	Displ.	Motor Type	Cooling Capacity	Input Power	COP	Height	Net Weight	Certification
		rpm	cm ³		w	w	w/w	mm	kg	

220-240V/50Hz

T系列变频 T Series VSC

HKD66FSK	Al	1400-4000	6.6	PMSM	45-150	26-85	Up to 1.90	163	7.1	
HKD75FSK	Al	1400-4000	7.5	PMSM	52-170	29-96	Up to 1.90	163	7.1	
HKD86FSK	Al	1400-4000	8.6	PMSM	60-190	35-105	Up to 1.90	163	7.1	
HKD93FSK	Al	1400-4000	9.3	PMSM	70-210	40-125	Up to 1.90	163	7.1	
HKD10FSK	Al	1400-4000	10.5	PMSM	83-235	49-132	Up to 1.90	163	7.1	CCC
HKD12FSK	Al	1400-4000	11.5	PMSM	95-270	51-154	Up to 1.90	163	7.1	CCC
HKD66FSK I	Cu	1400-4000	6.6	PMSM	45-150	25-82	Up to 1.95	163	8.0	
HKD75FSK I	Cu	1400-4000	7.5	PMSM	52-170	28-93	Up to 1.95	163	8.0	
HKD86FSK I	Cu	1400-4000	8.6	PMSM	60-190	32-102	Up to 1.95	163	8.0	
HKD93FSK I	Cu	1400-4000	9.3	PMSM	70-210	38-115	Up to 1.95	163	8.0	
HKD10FSK I	Cu	1400-4000	10.5	PMSM	83-235	44-123	Up to 1.95	163	8.0	CCC
HKD12FSK I	Cu	1400-4000	11.5	PMSM	95-270	50-146	Up to 1.95	163	8.0	CCC

Z系列变频 Z Series VSC

HXZ150FSM	Al	1200-4200	6.5	PMSM	42-150	23-80	Up to 1.90	145	6.9	-
HXZ170FSM	Al	1200-4200	7.0	PMSM	50-170	26-92	Up to 1.90	145	6.9	-
HXZ200FSM	Al	1200-4200	8.6	PMSM	56-200	30-103	Up to 1.90	145	6.9	-
HXZ220FSM	Al	1200-4200	9.2	PMSM	68-220	36-120	Up to 1.90	145	6.9	-
HXZ240FSM	Al	1200-4200	9.5	PMSM	75-240	39-125	Up to 1.90	145	6.9	-
HDZ150FSM	Al	1200-4200	6.5	PMSM	42-150	25-88	Up to 1.80	145	6.3	-
HDZ170FSM	Al	1200-4200	7.0	PMSM	50-170	27-98	Up to 1.80	145	6.3	-
HDZ200FSM	Al	1200-4200	8.6	PMSM	56-200	30-110	Up to 1.80	145	6.3	-
HDZ220FSM	Al	1200-4200	9.2	PMSM	68-220	40-132	Up to 1.80	145	6.3	-

Picture5 Mbsm Dot Pro : www.mbsm.pro

Mbsm_dot_pro_private_PDF_catalog_zelTélécharger
COMPRESSEUR ZEL HML170A AU R600A LBP 1/6HP 9.5CM3



REDMI NOTE 9
AI QUAD CAMERA

WHIRLPOOL , COMPRESSEUR R600 ,1/8 HP
, HKK80AA, LBP Compressor, Top
Efficiency , 220-240V 50Hz

Category: Technologie,Tester ok

written by www.mbsm.pro | 22 April 2020





PictureS Mbsm Dot Pro : www.mbsm.pro

WHIRLPOOL , COMPRESSEUR R600 ,1/8 HP , HKK80AA

R600a • 220-240 V • 50 Hz • KAPPA

Compressor	Code number	Application	CECOMAF Capacity [W] T _c =55°C, T _{liq} =55°C, T _{suc} =32°C Evaporating temperature [°C]						CECOMAF						ASHRAE Capacity [W] T _c =54.4°C, T _{liq} =32.2°C, T _{suc} =32.2°C Evaporating temperature [°C]					
									LBP rating point -25°C / 55°C		MBP rating point -10°C / 55°C		HBP rating point 5°C / 55°C							
			-35	-15	-5	0	10	15	Cooling capacity	COP	Cooling capacity	COP	Cooling capacity	COP	-35	-15	-5	0	10	15
									[W]	[W/W]	[W]	[W/W]	[W]	[W/W]						
HMK80AA	15950000	LBP	55	170				102	1.18	211	1.68			67	207					
HMK95AA	15460700	LBP	67	207				125	1.20	257	1.72			81	253					
HMK12AA	16236200	LBP	82	239				149	1.21	292	1.66			100	291					
HTK55AA	16122700	LBP	32	119				69	1.20	150	1.79			39	146					
HTK70AA	16106100	LBP	44	150				87	1.26	185	1.85			54	182					
HTK80AA	16068300	LBP	55	170				102	1.26	212	1.83			67	207					
HTK95AA	16068200	LBP	71	207				126	1.29	258	1.82			86	252					
HTK12AA	16111600	LBP	82	239				149	1.29	292	1.77			100	291					
HKK55AA	16124400	LBP	32	120				69	1.37	150	2.00			39	146					
HKK70AA	16124500	LBP	44	148				87	1.40	186	1.98			54	181					
HKK80AA	16072100	LBP	55	170				102	1.40	212	1.99			67	207					
HKK95AA	16049700	LBP	69	207				126	1.42	256	1.95			84	252					
HKK12AA	16065900	LBP	82	239				149	1.42	292	1.93			100	291					
HXK55AA	15650400	LBP	36	122				72	1.45	152	2.00			44	149					
HXK70AA	15690400	LBP	47	149				88	1.47	186	2.02			57	181					
HXK80AA	15621800	LBP	58	173				105	1.50	214	2.05			71	210					
HXK95AA	15592900	LBP	73	209				129	1.51	258	2.05			89	255					
HXK12AA	15593100	LBP	83	245				152	1.50	300	2.04			101	299					
HZK95AA	16313100	LBP	73	208				128	1.58	257	2.15			89	254					

PictureS Mbsm Dot Pro : www.mbsm.pro

Samsung SD162H-L1U2 Compressor, Rscr, 1/5 Hp, 6.99Cc, MANUFACTURERS, FACTORY, SUPPLIERS FROM CHINA

Category: Technologie, Tester ok
 written by www.mbsm.pro | 22 April 2020





PictureS Mbsm Dot Pro : www.mbsm.pro

HP 1/5 HP Samsung SD162C-L1U2

2. Function Specifications Temp Range □ 32□ ~ 40□ Capacity Cubic Feet 7 Climate Class N Max Ambient Temp □ 89.6□ Min Ambient Temp □ 59□ Castors 5" 4EA Shelves 2EA Doors 1EA Exterior Finish Stainless Steel Inte ...

MK 1 62 Q - L 1 U A

① ② ③ ④ ⑤ ⑥ ⑦ ⑧

1) Compressor model identification

NUMBER	MEANING
① Series	CD, SD, MD, SK, MK, HK, MSS, MSA, MSE, ENV, MKV, MSV
② Refrigerant	1 : R 134a (LBP) 4 : R 600a (LBP) 6 : R 134a (HBP)
③ Displacement (cc/Rev.) x 10	24 : 2.40cc, 30 : 2.93cc, 37 : 3.71cc, 43 : 4.38cc, 50 : 5.21cc, 51 : 5.12cc, 52 : 5.21cc, 60 : 6.16cc, 62 : 6.16cc, 70 : 6.99cc, 72 : 7.21cc, 80 : 8.19cc, 82 : 8.19cc, 83 : 8.19cc, 88 : 8.80cc, 90 : 9.07cc, A1 : 10.68cc, A2 : 12.13cc, A3 : 12.52cc, A5 : 15.32cc
④ Rated voltage and frequency	B : 220V ~ 60Hz C : 115V ~ 60Hz D : 115-127V ~ 60Hz E : 100V ~ 50/60Hz G : 220-240V ~ 50Hz, 220V ~ 60Hz H : 200-220V ~ 50Hz, 220V ~ 60Hz K : 200-220V ~ 50Hz P : 127V ~ 60Hz Q : 220-240V ~ 50Hz A : variable for BLDC
⑤ Application	L/R/S : Low Back Pressure H : High Back Pressure
⑥ Cooling type	0 : Oil cooling 1 : Static 2 : Fan cooling
⑦ Motor type	B/C/X : BLDC S : PTC or Current-CSIR U : PTC-RSCR (Optional RSIR) W : PTC-CSR Y : Current-RSIR Z : PTC-RSIR
⑧ Option	

2) Serial number

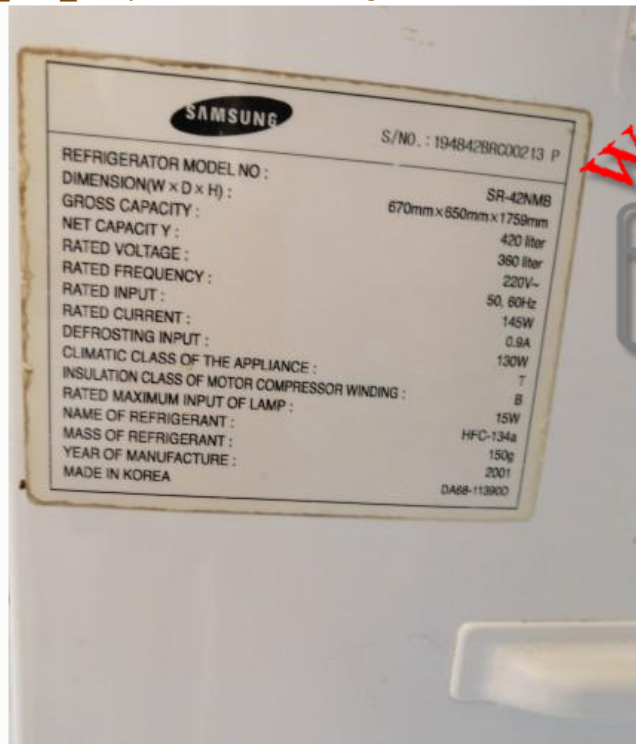
- ① Model code
- ② Production line
- ③ Year : 05 → Y, 06 → L, 07 → P, 08 → Q, 09 → S, 10 → Z, 11 → B, 12 → C, 13 → D, 14 → F
- ④ Month : 1 → Jan, 2 → Feb, ... A → Oct, B → Nov, C → Dec
- ⑤ Serial number



Private Picture Copyright : WWW.MBSM.PRO

Mbsm_dot_pro_private_PDF_Sd162h-11uaTélécharger

Mbsm_dot_pro_private_PDF_compressor-catalogue-2015Télécharger



Private Picture Copyright : WWW.MBSM.PRO

MODEL:
SR-42NMB

POWER:
220V/50,60Hz

COMPRESSOR:
SD162H-L1U2

BOM NAME:
S428GCSWHL/ZAM

SERIAL NO:
194842BRC00213 P



Private Picture Copyright : WWW.MBSM.PRO



Private Picture Copyright : WWW.MBSM.PRO