

Hermetic compressors, Cubigel Compressors, LBP , L55BV, 1/6hp, r12

Category: compressor

written by www.mbsm.pro | 20 December 2021

R12				-35	-30	-25	-23,3	-20	-15	-10	R12							
CU01-L35AU	L35AU	1/12	S 3,66	44	62	83	92	109	138	170	C	270	8,6	RSIR	P		•	
CU01-L45AV	L45AV	1/8	S 4,50	39	56	79	87	105	136	171	C	300	8,4	RSIR	R			•
CU01-L45AW	L45AW	1/8	S 4,50	39	56	79	87	105	136	171	C	300	8,4	RSIR	R	•		•
CU01-L55AT	L55AT	1/6	S 5,47	49	73	101	112	134	171	212	C	470	9,5	RSIR	R	•		•
CU01-L55AV	L55AV	1/6	S 5,47	49	73	101	112	134	171	212	C	470	9,5	RSIR	R			•
CU01-L55BV	L55BV	1/6	OC 5,47	49	73	101	112	134	171	212	C	470	9,5	RSIR	R			•
CU01-L55BW	L55BW	1/6	OC 5,47	49	73	101	112	134	171	212	C	300	8,4	RSIR	R	•		•
CU01-L76AT	L76AT	1/5	S 7,57	58	88	125	139	168	217	272	C	530	10,0	RSIR	R	•		•
CU01-L76AV	L76AV	1/5	S 7,57	58	88	125	139	168	217	272	C	530	10,5	RSIR	R			•
CU01-L76BV	L76BV	1/5	OC 7,57	58	88	125	139	168	217	272	C	530	10,5	RSIR	R			•
CU01-L6BW	L76BW	1/5	OC 7,57	58	88	125	139	168	217	272	C	470	9,5	RSIR	R	•		•
CU01-L88AV	L88AV	1/4	S 8,85	69	106	150	166	200	255	317	C	530	11,0	RSIR	R			•
CU01-L88BV	L88BV	1/4	OC 8,85	69	106	150	166	200	255	317	C	530	11,0	RSIR	R			•
CU01-L88BW	L88BW	1/4	OC 8,85	69	106	150	166	200	255	317	C	530	10,0	RSIR	R	•		•

Private Picture Copyright: WWW.MBSM.PRO

R12				-35	-30	-25	-23,3	-20	-15	-10	R12							
CU01-L35AU	L35AU	1/12	S 3,66	44	62	83	92	109	138	170	C	270	8,6	RSIR	P		•	
CU01-L45AV	L45AV	1/8	S 4,50	39	56	79	87	105	136	171	C	300	8,4	RSIR	R			•
CU01-L45AW	L45AW	1/8	S 4,50	39	56	79	87	105	136	171	C	300	8,4	RSIR	R	•		•
CU01-L55AT	L55AT	1/6	S 5,47	49	73	101	112	134	171	212	C	470	9,5	RSIR	R	•		•
CU01-L55AV	L55AV	1/6	S 5,47	49	73	101	112	134	171	212	C	470	9,5	RSIR	R			•
CU01-L55BV	L55BV	1/6	OC 5,47	49	73	101	112	134	171	212	C	470	9,5	RSIR	R			•
CU01-L55BW	L55BW	1/6	OC 5,47	49	73	101	112	134	171	212	C	300	8,4	RSIR	R	•		•
CU01-L76AT	L76AT	1/5	S 7,57	58	88	125	139	168	217	272	C	530	10,0	RSIR	R	•		•
CU01-L76AV	L76AV	1/5	S 7,57	58	88	125	139	168	217	272	C	530	10,5	RSIR	R			•
CU01-L76BV	L76BV	1/5	OC 7,57	58	88	125	139	168	217	272	C	530	10,5	RSIR	R			•
CU01-L6BW	L76BW	1/5	OC 7,57	58	88	125	139	168	217	272	C	470	9,5	RSIR	R	•		•
CU01-L88AV	L88AV	1/4	S 8,85	69	106	150	166	200	255	317	C	530	11,0	RSIR	R			•
CU01-L88BV	L88BV	1/4	OC 8,85	69	106	150	166	200	255	317	C	530	11,0	RSIR	R			•
CU01-L88BW	L88BW	1/4	OC 8,85	69	106	150	166	200	255	317	C	530	10,0	RSIR	R	•		•

Private Picture Copyright: WWW.MBSM.PRO



R12

Model	Refr.	HP	Ambient Temp C	Rated Voltage	Cooling Capacity		COP without RC		COP with RC	
					ASHRAE	CECOMAF	ASHRAE	CECOMAF	ASHRAE	CECOMAF
					-23.3°C kcal/h	-25°C W	-23.3°C W/W	-25°C W/W	-23.3°C W/W	-25°C W/W ₀
<input type="checkbox"/> L45AV	LBP::R12	1/8	43	B	221	192	0.91	0.71		
<input type="checkbox"/> L55AV	LBP::R12	1/6	43	B	115	101	0.99	0.78		
<input type="checkbox"/> L55BV	LBP::R12	1/6	43	B	115	101	0.99	0.78		
<input type="checkbox"/> L76AV	LBP::R12	1/5	43	B	145	127	1.05	0.84		
<input type="checkbox"/> L76BV	LBP::R12	1/5	43	B	145	127	1.05	0.84		
<input type="checkbox"/> L88AV	LBP::R12	1/4	43	B	171	150	1.02	0.81		
<input type="checkbox"/> L88BV	LBP::R12	1/4	43	B	171	150	1.02	0.81		
<input type="checkbox"/> LT45AV	LBP::R12	1/8	50	B	94	83	1.04	0.83		
<input type="checkbox"/> LT55AV	LBP::R12	1/6	50	B	115	102	1.06	0.85		
<input type="checkbox"/> LT55BV	LBP::R12	1/6	50	B	115	102	1.06	0.85		
<input type="checkbox"/> LT76BV	LBP::R12	1/5	50	B	155	137	1.14	0.91		
<input type="checkbox"/> LT88BV	LBP::R12	1/4	50	B	190	169	1.16	0.93		
<input type="checkbox"/> P12BW	LBP::R12	1/3	43	A	221	192	0.91	0.71		

Private Picture Copyright: WWW.MBSM.PRO

np	cm ³	cm ³	Kg
LBP			

R12				-35	-30	-25	-23,3	-20	-15	-10	R12									
CU01-L35AU	L35AU	1/12	S	3,66	44	62	83	92	109	138	170	C	270	8,6	RSIR	P				
CU01-L45AV	L45AV	1/8	S	4,50	39	56	79	87	105	136	171	C	300	8,4	RSIR	R				
CU01-L45AW	L45AW	1/8	S	4,50	39	56	79	87	105	136	171	C	300	8,4	RSIR	R				
CU01-L55AT	L55AT	1/6	S	5,47	49	73	101	112	134	171	212	C	470	9,5	RSIR	R				
CU01-L55AV	L55AV	1/6	S	5,47	49	73	101	112	134	171	212	C	470	9,5	RSIR	R				
CU01-L55BV	L55BV	1/6	OC	5,47	49	73	101	112	134	171	212	C	470	9,5	RSIR	R				
CU01-L55BW	L55BW	1/6	OC	5,47	49	73	101	112	134	171	212	C	300	8,4	RSIR	R				
CU01-L76AT	L76AT	1/5	S	7,57	58	88	125	139	168	217	272	C	530	10,0	RSIR	R				
CU01-L76AV	L76AV	1/5	S	7,57	58	88	125	139	168	217	272	C	530	10,5	RSIR	R				
CU01-L76BV	L76BV	1/5	OC	7,57	58	88	125	139	168	217	272	C	530	10,5	RSIR	R				
CU01-L6BW	L76BW	1/5	OC	7,57	58	88	125	139	168	217	272	C	470	9,5	RSIR	R				
CU01-L88AV	L88AV	1/4	S	8,85	69	106	150	166	200	255	317	C	530	11,0	RSIR	R				
CU01-L88BV	L88BV	1/4	OC	8,85	69	106	150	166	200	255	317	C	530	11,0	RSIR	R				
CU01-L88BW	L88BW	1/4	OC	8,85	69	106	150	166	200	255	317	C	530	10,0	RSIR	R				
CU01-L88EW	L88EW	1/4	OC	8,85	69	106	150	166	200	255	317	C-V	530	10,0	CSIR	R				
CU01-L88FW	L88FW	1/4	F	8,85	69	106	150	166	200	255	317	C-V	530	10,0	CSIR	R				
CU01-P12BW	P12BW	1/3	OC	12,0	79	131	192	215	261	338	422	C	530	11,5	RSIR	R				
CU01-P12FW	P12FW	1/3	F	12,0	79	131	192	215	261	338	422	C-V	530	11,5	CSIR	R				

Private Picture Copyright: WWW.MBSM.PRO

Type: Hermetic piston compressors Producer: ACC Series: HMBP

Model: L55BV

General data

Refrigerant: R12

Discharge element: C

Cooling: OC

Maximum ambient temperature [°C]: 43

Compressor's data

Cylinder capacity [cm³]: 5,5



Displacement [m³/h]: 0,9
Weight [kg]: 9,5
Oil charge [cm³]: 470
Oil type: ISO VG 46 MINERAL

Engine's data

Engine type: RSIR
Power [KM]: 1/6
Starting element: LST
Power supply: 200V 50Hz
Voltage range: 180-242
Locked rotor current [A]: 10,9
Running winding resistance (25°C) [Ω]: 10,81
Starting winding resistance (25°C) [Ω]: 34,36

Electrical data

Relays: 9660 B 118, MTRP 33
Shielding element: MRP63AMK, T0069
Starting capacitor volume [μF]:

Connections

	milimeters	inches
Suction/service tube:	6,5	
Service/suction tube:	6,5	
Discharge tube:	4,9	
Oil cooler tube:		4,9

HGX12P/75-4, R410A, compressor, semi-hermétique, BOCK, 25,0 hp

Category: Chaud&Froid,compressor

written by www.mbsm.pro | 20 December 2021



HGX12P/75-4 R410A

Data Sheet

Power supply	220/240 V-380/420 V-50 Hz-3 ph (265/290 V-440/480 V-60 Hz-3 ph) Δ Y
Horsepower	25,0 hp
Displacement	6,70 m ³
Cooling capacity at Refrigeration conditions, R407C	3,39 kW
Cooling capacity at Refrigeration conditions, R404A	3,97 kW
Refrigerant	R134a, R404A, R407C, R407F, R448A, R449A, R507, R513A
Suction pipe	5/8"
Discharge pipe	1/2"
Weight	49 kg
LRA (Δ/y)	43/25 A

MCC (Δ/y)	8,0/4,6 A
Type of oil	FUCHS Reniso Triton SE 55
Other remarks	Available in ATEX version, Electronic frequency control (30-70 Hz), Equipped with oil pump without connections to the differential oil pressure switch
Accessories	Control Capacity 50/100%, Crankcase heater 50-120 W, Thermal protection thermostat (PTC sensor)
Application	MHBP
Technology	Fixed speed
Lubrication mode	Oil pump
Low pressure design	19 bar
High pressure design	28 bar
Type of motor cooling	Suction gas
Protection type	IP 66
Motor protection type	INT69 G
Speed	1450 rpm



Mbsm_dot_pro_private_PDF_HGX12PTélécharger



BOCK BOCK GmbH, Benzstr.7 CE
72636 Frickenhausen, Germany

Typ: HGX12P/75-4 S

Nr.: BD44874A046

I_{max}: 8,0/4,6A

I_{block} Δ: 43A Y: 25A

P_{max}: ND(LP) / HD(HP) = 19/28 bar

220-240VΔ/380-420VY - 3 - 50HZ

n: 1450 min⁻¹ V_{in}: 6,70 m³/h

265-290VΔ/440-480VY - 3 - 60HZ

n: 1740 min⁻¹ V_{in}: 8,1 m³/h

IP66

Öl: BOCKlubE55

Import

Ab 02. August 2021 sind
Diese Änderung ist auch an
Die im Werk serienmäßig eingefüllte
Wartungseinheiten eingesetzt werden
aufgrund der Verwendung minderwertiger
erheblich abweichen und zudem Probleme
insbesondere eine Validierung im gesamten
Ölen nicht gewährt werden. Aus diesem Grund
Für durch alternative Öle entstandene Schäden

Kältemittel
HFKW / HFO
CO₂ / HFO
HFCKW
Kohlenwasserstoffe

Typschild Beispiel:
Name plate example:

Compressor, R134A, GLY12RGA, 10,7cm³, HMBP, 230V, 3/8HP, CUBIGEL, HUAYI

Category: compressor

written by www.mbsm.pro | 20 December 2021



Private Picture Copyright: WWW.MBSM.PRO

Model	Displacement (cm ³)	Refrigerant	Application	Compressor Cooling	Voltage/Frequency	Frequency (Hz)	Motor Type	Cooling (kCal/h)	COP (W/W)	Cooling (W)	COP (W/W)	Technical Data Sheet (*)
GL45MG	4,56	R134a	HBP	S	230V 50/60Hz	~1	50 CSIR	352	1,95	340	1,67	GL45MG
GL45MG	4,56	R134a	HBP	S	230V 50/60Hz	~1	60 CSIR	412	1,92	398	1,65	GL45MG
GL60MG	5,98	R134a	HBP	S	230V 50/60Hz	~1	60 CSIR	520	2,02	499	1,73	GL60MG
GL60MG	5,98	R134a	HBP	S	230V 50/60Hz	~1	50 CSIR	445	1,99	427	1,70	GL60MG
GL80MG	7,57	R134a	HBP	S	230V 50/60Hz	~1	60 CSIR	702	2,15	674	1,84	GL80MG
GL80MG	7,57	R134a	HBP	S	230V 50/60Hz	~1	50 CSIR	600	2,10	576	1,78	GL80MG
GL90MG	8,85	R134a	HBP	S	230V 50/60Hz	~1	50 CSIR	685	2,10	661	1,79	GL90MG
GL90MG	8,85	R134a	HBP	S	230V 50/60Hz	~1	60 CSIR	800	2,11	772	1,83	GL90MG
GLY12RAa	10,70	R134a	HBP	F	220-240V 50Hz	~1	50 CSIR	900	2,30	867	1,97	GLY12RAa
GLY12RAb	10,70	R134a	HBP	F	220-240V 50Hz	~1	50 CSR	900	2,57	867	2,20	GLY12RAb
GLY12RGa	10,70	R134a	HBP	F	200-220/220-230V 50/60Hz	~1	50 CSIR	900	2,19	867	1,87	GLY12RGa
GLY12RGa	10,70	R134a	HBP	F	200-220/220-230V 50/60Hz	~1	60 CSIR	1.038	2,22	1.007	1,90	GLY12RGa
GLY12RGb	10,70	R134a	HBP	F	200-220/220-230V 50/60Hz	~1	50 CSR	900	2,32	867	1,98	GLY12RGb
GLY12RGb	10,70	R134a	HBP	F	200-220/220-230V 50/60Hz	~1	60 CSR	1.038	2,40	1.007	2,07	GLY12RGb
GP14TB	14,17	R134a	HBP	F	220-240V 50Hz	~1	50 CSIR	1.030	2,03	998	1,76	GP14TB
GP16TB	16,15	R134a	HBP	F	220-240V 50Hz	~1	50 CSIR	1.240	2,09	1.204	1,80	GP16TB
GP16TE	16,15	R134a	HBP	F	115V 60Hz	~1	60 CSIR	1.450	1,96	1.408	1,69	GP16TE
GP16TG	16,15	R134a	HBP	F	200-220/230V 50/60Hz	~1	50 CSIR	1.240	2,09	1.204	1,81	GP16TG
GP16TG	16,15	R134a	HBP	F	200-220/230V 50/60Hz	~1	60 CSIR	1.450	2,00	1.408	1,74	GP16TG
GPM16RA	16,15	R134a	HBP	F	220-240V 50Hz	~1	50 CSIR	1.351	2,09	1.317	1,79	GPM16RA

(*) Under standard conditions

Additional information

Voltage (V)	230Vac
Frequency (hz)	50
Range	MBP
Displacement (cm3)	10,7 cm ³
Cooling capacity (W)	608W
Conditions (°C)	-10 / +45C

Refrigerant	R134A
Suction line	8.1mm juotettava
Liquid line	6,5mm juotettava
Height (mm)	198mm
Weight (kg)	10,43kg
Oil	ISO VG 32 Ester

Technical data

- Model: **GLY12RAa**
- Refrigerant Gas: **R-134a**
- Pressure/temperature: **HBP**
- Power: **3/8 HP**
- Voltage: **230 V**
- Current Type: **Single-Phase**
- Frequency: **50 Hz**
- Compressor Type: **Hermetic**
- Displacement: **10.7 cm³**
- Power Cons. -10°C: **293 W**
- Power Cons. -5°C: **322 W**
- Efficiency 0°C: **351 W**
- Power Cons. +5°C: **380 W**
- Power Cons. +7,2°C: **392 W**
- T° Condensation: **40 °C**
- Cooling Cap. -15°C: **408 Kcal/h**
- Cooling Cap. -10°C: **512 Kcal/h**
- Cooling Cap. -5°C: **642 Kcal/h**
- Cooling Cap. 0°C: **797 Kcal/h**
- Cooling Cap. 5°C: **977 Kcal/h**
- Cooling Cap. 7.2°C: **1065 Kcal/h**
- Cooling Cap. 10°C: **1184 Kcal/h**
- Test Type: **Ashare 46**

Mbsm_dot_pro_private_PDF_pdf-GLY12RAaTélécharger

Model	Displacement (cm ³)	Refrigerant	Application	Compressor Cooling	Voltage/Frequency	Frequency (Hz)	Motor Type	ASHRAE (°)		CECOMAF (°)		Te
								Cooling (kCal/h)	COP (W/W)	Cooling (W)	COP (W/W)	
GL45MG	4.56	R134a	HBP	S	230V 50/60Hz ~1	50	CSIR	352	1.95	340	1.87	GI
GL45MG	4.56	R134a	HBP	S	230V 50/60Hz ~1	60	CSIR	412	1.92	398	1.85	GI
GL60MG	5.98	R134a	HBP	S	230V 50/60Hz ~1	60	CSIR	520	2.02	496	1.73	GI
GL60MG	5.98	R134a	HBP	S	230V 50/60Hz ~1	50	CSIR	445	1.99	427	1.70	GI
GL80MG	7.57	R134a	HBP	S	230V 50/60Hz ~1	60	CSIR	702	2.15	674	1.84	GI
GL80MG	7.57	R134a	HBP	S	230V 50/60Hz ~1	50	CSIR	600	2.10	576	1.78	GI
GL90MG	8.85	R134a	HBP	S	230V 50/60Hz ~1	50	CSIR	685	2.10	651	1.79	GI
GL90MG	8.85	R134a	HBP	S	230V 50/60Hz ~1	60	CSIR	800	2.11	772	1.83	GI
GLY12RAa	10.70	R134a	HBP	F	220-240V 50Hz ~1	50	CSIR	900	2.30	887	1.97	GL'
GLY12RAb	10.70	R134a	HBP	F	220-240V 50Hz ~1	50	CSR	900	2.57	887	2.20	GL'
GLY12RGa	10.70	R134a	HBP	F	200-220/220-230V 50/60Hz ~1	50	CSIR	900	2.19	887	1.87	GL'
GLY12RGa	10.70	R134a	HBP	F	200-220/220-230V 50/60Hz ~1	60	CSIR	1.038	2.22	1.007	1.90	GL'
GLY12RGb	10.70	R134a	HBP	F	200-220/220-230V 50/60Hz ~1	50	CSR	900	2.32	887	1.98	GL'
GLY12RGb	10.70	R134a	HBP	F	200-220/220-230V 50/60Hz ~1	60	CSR	1.038	2.40	1.007	2.07	GL'
GP14TB	14.17	R134a	HBP	F	220-240V 50Hz ~1	50	CSIR	1.030	2.03	998	1.76	GI
GP16TB	16.15	R134a	HBP	F	220-240V 50Hz ~1	50	CSIR	1.240	2.09	1.204	1.80	GI
GP16TE	16.15	R134a	HBP	F	115V 60Hz ~1	60	CSIR	1.450	1.98	1.408	1.69	GI
GP16TG	16.15	R134a	HBP	F	200-220/230V 50/60Hz ~1	50	CSIR	1.240	2.09	1.204	1.81	GI
GP16TG	16.15	R134a	HBP	F	200-220/230V 50/60Hz ~1	60	CSIR	1.450	2.00	1.408	1.74	GI
GPM16RA	16.15	R134a	HBP	F	220-240V 50Hz ~1	50	CSIR	1.351	2.09	1.317	1.79	GP





Private Picture Copyright: WWW.MBSM.PRO

Neon compressor, QD128H(360W), 1/3Hp,
QD158H(450W), 3/8+, QD142H(395W),
3/8+, QD168H (322W), 1/2Hp, R134a

Category: compressor

written by www.mbsm.pro | 20 December 2021



Neon compressor, QD128H(360W), 1/3Hp, QD158H(450W), 3/8+, QD142H(395W), 3/8+, QD168H (322W), 1/2Hp, R134a

Compresseur, Mitsubishi, Electric
MITSUBISHI, RH174VHAC, 9000 BTU/heure
(2,6 kW), 220-240V 50Hz, R22

Category: compressor

written by www.mbsm.pro | 20 December 2021



Private Picture Copyright: WWW.MBSM.PRO

Modèle – Mitsubishi Electric RH 174 VHAC (9000Btu)

Productivité – 9000 BTU/heure (2,6 kW)

Alimentation – 220-240V 50Hz

Réfrigérant (fréon) – R22

Entre vannes – 15 cm

Hauteur compresseur – 22 cm

Diamètre compresseur – 13 cm

#mbsmpro

Mbsm_dot_pro_private_PDF_pdf_RH174VHACTélécharger

Mbsm_dot_pro_private_picture_RH174VHACTélécharger



COMPRESSOR, EMBRACO, 1/4 HP++ (big), 220V, R134A, EGAS 80HLR, FREEZER MOTOR

Category: compressor

written by www.mbsm.pro | 20 December 2021

Technical Specifications

Brand	Embraco
Production place	Brazil
Compressor Type	Hermetic Piston
Compression Line	1/4 "
Working Regime	LBP (-23,3 ° C / + 54,4 ° C)
Frequency (Hz)	50-60
Suction Line	5/16 "
Cooling Capacity (Watts)	195
good kodu	51370117399RA
Compressor Model	EGAS80HLR
Piston Diameter (cm3/rev)	6.36
Tipi Motorcycle	1 FAZ - RSIR
Refrigerant Gas	R134a
Compressor Power(Hp)	1/4 +



Private Picture Copyright : WWW.MBSM.PRO

#mbsmpro

TECHNICAL SPECIFICATIONS

- Voltage: 220V 50 / 60Hz
- Refrigerant: R-134A
- Evaporation temperature range: -35 ° C to -10 ° C
- Power: 1/4 +

Mbsm_dot_pro_private_PDF_pdf_embraco-compressor-egas-80-hlrTélécharger

Technical Specifications

Brand	Embraco
Production place	Brazil
Compressor Type	Hermetic Piston
Compression Line	1/4 "
Working Regime	LBP (-23,3 ° C / + 54,4 ° C)
Frequency (Hz)	50-60
Suction Line	5/16 "
Cooling Capacity (Watts)	195
good kodu	51370117399RA
Compressor Model	EGAS80HLR
Piston Diameter (cm3/rev)	6.36
Tipi Motorcycle	1 FAZ - RSIR
Refrigerant Gas	R134a
Compressor Power(Hp)	1/4 +



Private Picture Copyright : WWW.MBSM.PRO



Private Picture Copyright: WWW.MBSM.PRO

Bitzer, Compressor, S6F-30.2Y-40P,
Compressor Selection, Semi-hermetic
Reciprocating, 1450 min-1 , 101,1
(LP) , 30hp

Category: compressor

written by www.mbsm.pro | 20 December 2021



Type S6F-30.2Y-40P

S.No. 1600308267

BITZER KÜHLMASCHINENBAU GMBH
Made in Germany



Nominal Voltage V 3Ph~	Frequ. Hz	Operat. C. A (max)	Locked Rotor C.		Displacem. m³/h	Speed RPM
			A (Y)	A (YY)		
380-420	50	51	135	220	101,4	1450
440-480	60	51	135	220	122	1750

IP 54 LP/HP max. 19 / 28 bar



BITZER is raising the bar in terms of technology and capacity for expanded low temperature applications with the 2nd generation of 2-stage compressors. This series is the result of extensive research on the basis of years of experience in the construction of highly efficient and solid reciprocating compressors. The gas flow control and working valves are specially adapted for low temperature applications.

- Displacement at 1450 min⁻¹ : 101,1 (LP) 50,5 (HP)
- Number of cylinders : 6
- Oilcharge : 4,75 dm³

Displacement (1450 RPM 50Hz):101.10 / 50.50 m³/h Displacement (1750 RPM 60Hz):122.02 / 60.95 m³/h

The Bitzer Compressor is high quality!

Displacement (1450 RPM 50Hz):101.10 / 50.50 m³/h

Displacement (1750 RPM 60Hz):122.02 / 60.95 m³/h

No. of cylinder x bore LP/HP x stroke:6+6 x 82/ 82 mm x 55 mm

Max. pressure (LP/MP/HP):19 / 19 / 28 bar

Connection suction line:42 mm – 1 5/8 inch

Connection discharge line:35 mm – 1 3/8 inch

Oil type R404A/R507A:BSE32 (Standard)

Oil type R448A/R449A:BSE32 (Standard)

Oil type R22:B5.2 (Option) We can also provide the following models

4JTE-15K

GYD80485VAYB4

GED60235VLB332

GMD60137VBYR632

GED60485VBYR3-1

CSH7573-70Y-40P

GYD80182VLYB632

GYD60385VLYR2-2

GED80154VLR332

GYU80295VLR4-2

GSU60120VLB6-2

GED60137VAYB3-1

GUU60154VLR532

GUD80295VLR232

GSD80295VLR6-1

GTU60137VLYB3-1

GUD60137VBYR5-1

GYD80235VBYB332

GYD60421VAYR332

GMD60295VBR3-1

GED80154VBYB6

4NEH-14-40S

GMU60154VLY

GYD60154VAB4-2

GYD80182VAYR4-2

GYD80421VBR5-1

GYD60385VLYR4-1

4TE-9.F3Y-40S

GMD60182VBYB3-2

GMD80120VLR232
 GUD60120VBYR5-2
 GSD60154VAYR232
 GMD60154VBYR632
 44EES-12-40S
 GMD60154VBB432
 GUD80421VWR4-2
 GYD80385VAYR2-2
 GTD60385VLB632
 GED60235VLB2
 GED60154VAYR4
 GSD80421VWR5-2
 GUD60421VBR5
 GYD80182VBYB5-1
 GED60295VBB5
 GED80421VAR4-1
 GED60385VLYB3
 GYU80421VLR2
 GSD80485VBB5-1
 GED60120VLB2
 GUD60421VBR332
 GTD60154VAB4-2
 GED60421VAYB6-1
 GMD60485VBB5-1
 GSD60485VAYR4
 GED80295VLYR6-1
 GSD60235VAYB232
 GTD60385VBYR3-1
 GUD60154VBB3-2
 GUD80295VWB6-2
 GED60421VAR5
 GMD80421VBR4
 GED80182VLR532
 GSD60154VBYB6-1
 GTD80421VBYR332
 GSD60182VAYB4-1
 GUD80485VWYR5-2
 GSU80295VLYR6-1
 GSD80182VLYR2-2
 GSU80385VLB432
 GED80295VAY
 GED80295VAB3-2
 GYD60120VAR4

With liquid subcooling 50Hz (R404A/R507A)

Compressor type	Cond. temp. [°C]	Q _o / P _e	Evaporating temperature °C									
			-25	-30	-35	-40	-45	-50	-55	-60	-65	-70
S6F-30.2Y	30	Q _o	43400	37400	31750	26500	21700	17420	13690	10540	7920	5800

Pe	2,53	0,65	8,78	16,94	15,15	13,42	11,77	10,20	8,74	7,40	
35	Qo	42500	36600	31050	25900	21200	17030	13420	10340	7780	5680
Pe	3,85	1,86	9,89	7,94	6,04	4,21	12,45	10,78	9,23	7,80	
40	Qo	41500	35700	30300	25300	20700	16680	13170	10150	7590	
Pe	25,20	23,10	21,01	18,96	16,95	15,00	13,14	11,37	9,72		
45	Qo	40450	34800	29550	24700	20300	1660	12930	9920		
Pe	26,59	24,37	22,16	19,98	17,86	15,80	13,83	11,96			
50	Qo	39500	34000	28850	24100	19870	16060	12650			
Pe	28,07	25,69	23,33	21,01	18,75	6,57	14,49				
55	Qo	38800	33250	28200	23600	19490	15740				
Pe	29,64	27,06	24,51	22,03	19,63	17,32					

Qo – Cooling capacity [Watt], Pe – Power consumption [kW]

Without liquid subcooling 50Hz (R404A/R507A)

Compressor type	Cond. temp. [°C]	Qo / Pe		Evaporating temperature °C								
		-25	-30	-35	-40	-45	-50	-55	-60	-65	-70	
S6F-30.2Y	30	Qo	38050	31700	26050	21000	16620	12880	9790	7280	5300	3760
Pe	1,26	18,81	16,61	14,64	12,90	11,37	10,02	8,86	7,85	7,00		
35	Qo	36000	29950	24500	19710	15570	12070	9180	6840	4980	3510	
Pe	22,11	19,66	17,41	15,37	13,53	11,88	10,42	9,13	8,02	5,72		
40	Qo	33800	28000	22900	18390	14530	11280	8590	6400	4620		
Pe	22,95	20,53	18,26	16,15	14,20	12,42	10,82	9,41	8,18			
45	Qo	31450	26050	21250	17080	13510	10500	8000	5920			
Pe	23,82	21,42	19,12	16,94	14,89	13,00	11,26	9,71				
50	Qo	28950	24000	19590	15770	12490	9710	7370				
Pe	24,72	22,31	19,98	17,74	15,61	13,61	11,76					
55	Qo	26400	21900	17890	14430	11440	8880					
Pe	25,67	23,19	20,80	18,52	16,34	14,27						

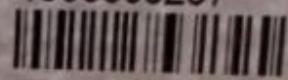
Qo – Cooling capacity [Watt], Pe – Power consumption [kW]



Type S6F-30.2Y-40P

S.No. 1600308267

BITZER KÜHLMASCHINENBAU GMBH
Made in Germany



Nominal Voltage V 3Ph~	Frequ. Hz	Operat. C. A (max.)	Locked Rotor C.		Displacem. m³/h	Speed RPM
			A (Y)	A (YY)		
380-420	50	51	135	220	101,4	1450
440-480	60	51	135	220	122	1750

IP 54 LP/HP max. 19 / 28 bar





Private Picture Copyright : WWW.MBSM.PRO

Mbsm_dot_pro_private_PDF_S6F-30.2Y-40PTélécharger

Compressor type Displacement at 1450 min-1 Number of cylinders Oil charge Weight Pipe connections Motor Max. operating current Max. power consumption Starting

current(lockedrotor)LPHPDLSLdm3KgmpouceAmpkW
Y/YY56F-30.2Y101,150,567.752343513/842
5415/8
21/8380 ..420YY/3/50
440 ..480 YY/3/605131,9135/220

**GP14TB, R-134a, 3/8HP++, 230V, Haute
Pression, CUBIGEL/HUAYI,
Décalage: 14.17 cm³**

Category: compressor
written by www.mbsm.pro | 20 December 2021



Private Picture Copyright : WWW.MBSM.PRO

- CUBIGEL/HUAYI
- Original

Données techniques

- Modèle: GP14TB
- Gaz: R-134a
- Température/Pression: Haute Pression
- Puissance: 3/8 HP
- Type De Courant: Monophasé
- Fréquence: 50 Hz
- Type De Compresseur: Hermétique
- Décalage: 14.17 cm³

- Cons.Énergie -10°C: **366 W**
- Cons.Énergie -5°C: **406 W**
- Cons.Énergie 0°C: **448 W**
- Cons.Énergie +5°C: **491 W**
- Cons.Énergie +10°C: **536 W**
- T° De Condensation: **40 °C**
- Capacidad Frigorífica -15°C: **489 Kcal/h**
- Capacidad Frigorífica -10°C: **634 Kcal/h**
- Capacidad Frigorífica -5°C: **800 Kcal/h**
- Capacidad Frigorífica 0°C: **986 Kcal/h**
- Capacidad Frigorífica 5°C: **1193 Kcal/h**
- Capacidad Frigorífica 7.2°C: **1291 Kcal/h**
- Capacidad Frigorífica 10°C: **1421 Kcal/h**
- Tipo Test: **Ashare 46**



Private Picture Copyright : WWW.MBSM.PRO

3070051	alternative part number	605011	رقم القطعة
GP14TB	type	R134a	refrigerant
W 566	power input	HP 3/8	power
CSIR	motor system	cm ³ 14	cylinder capacity
mm 203.6	height	V 220-240	voltage
W 643	power at -5°C	W 497	power at -10°C
W 999	power at +5°C	W 810	power at 0°C
W 271	power at -20°C	W 191	power at -25°C
W 1209	power at +10°C	W 373	power at -15°C
HMBP	application	ASHRAE	test method
C° 43	.ambient temperature max	Hz 50	frequency
		kg 11.5	weight



Private Picture Copyright : WWW.MBSM.PRO

Donper, Refrigeration, Compressr, r134A, freezer, LU140CY1, CT6220CE, AK120CY1, 1/3Hp-

Category: compressor

written by www.mbsm.pro | 20 December 2021



Private Picture Copyright : WWW.MBSM.PRO

Product Description

Donper Refrigeration Compressr r134A

– Famous and Popular Compressors

– D series hermetic compressors for R134A mainly are designed for applications in water dispenser, small freezer. The main characteristics of D series are light weight, compact size, high reliability, low noise and low vibration.

– R134A S series hermetic compressor mainly are designed for applications in water dispenser, small refrigerator, small freezer. The main characteristics of S series are light weight and compact size, reliability, low noise and high low vibration. By the optimal design of the suspension system and the continuous curvarure design of its housing, low operating vibration and sound levels have been achieved.

R600a Series

Refrige- rant	Applica- tion	Model	Series	Power Cooling	Motor Power type	supply capacity	COP	W/W
*ASHRAE -23.3	*CECOMAF -25	*ASHRAE -23.3	*CECOMAF -25					
R600a	LBP	W40CY	IN	1/14 S	hatch	220/50 55	43	0.9 0.75
R600a	LBP	S53CY	S	1/10 S	hatch	220/50 75	57	1.2 0.95
R600a	LBP	S65CY	S	1/8 S	hatch	220/50 95	72	1.2 0.95
R600a	LBP	S75CY	S	1/7 S	hatch	220/50 118	86	1.2 0.95
R600a	LBP	SK53CY	S	1/10 S	RSCR	220/50 75	57	1.3 1.03
R600a	LBP	L76CY	L	1/6 S	hatch	220/50 132	100	1.36 1.07
R600a	LBP	L88CY	L	1/5 S	hatch	220/50 153	116	1.36 1.07
R600a	LBP	QD60AY	NOT	1/7 S	hatch	100/60 125	95	1.35 1.07
R600a	LBP	QD76Y	NOT	1/6 S	hatch	220/50 132	100	1.36 1.07
R600a	LBP	QD88Y	NOT	1/5 S	hatch	220/50 153	116	1.36 1.07
R600a	LBP	QD100Y	NOT	1/5 + S	hatch	220/50 170	129	1.38 1.09
R600a	LBP	QD123Y	NOT	1/4 S	hatch	220/50 187	142	1.38 1.09
R600a	LBP	LK88CY	L	1/5 + S	RSCR	220/50 160	122	1.58 1.25
R600a	LBP	QD100YG	NOT	1/4 + S	RSCR	220/50 180	137	1.58 1.25
R600a	LBP	QD135YG	NOT	1/4 + S	RSCR	220/50 215	163	1.58 1.23
R600a	LBP	QD153YG	NOT	1/4 + S	RSCR	220/50 246	184	1.58 1.23
R600a	LBP	LU68CY	L	1/7 S	RSCR	220/50 120	91	1.56 1.22
R600a	LBP	QD68YU	NOT	1/7 S	RSCR	220/50 120	91	1.56 1.22
R600a	LBP	QD76YU	NOT	1/6 S	RSCR	220/50 140	106	1.65 1.3
R600a	LBP	QD88YU	NOT	1/5 S	RSCR	220/50 160	122	1.68 1.33
R600a	LBP	QD100YU	NOT	1/4 S	RSCR	220/50 180	137	1.7 1.34
R600a	LBP	QD123YU	NOT	1/4 S	RSCR	220/50 196	150	1.68 1.3
R600a	LBP	QD135YU	NOT	1/4 + S	RSCR	220/50 220	168	1.68 1.3
R600a	LBP	QD153YU	NOT	1/4 + S	RSCR	220/50 248	189	1.65 1.28
R600a	LBP	QD68YZ	NOT	1/6 S	RSCR	220/50 120	91	1.8 1.42
R600a	LBP	QD76YZ	NOT	1/6 S	RSCR	220/50 140	106	1.8 1.42
R600a	LBP	QD88YZ	NOT	1/5 + S	RSCR	220/50 165	125	1.8 1.42
R600a	LBP	QD100YZ	NOT	1/4 + S	RSCR	220/50 185	141	1.8 1.42
R600a	LBP	QD135YZ	NOT	1 / 3- S	RSCR	220/50 220	168	1.8 1.42
R600a	LBP	QD60YT	NOT	1/8 S	ESCR	220/50 106	81	1.88 1.48
R600a	LBP	QD68YT	NOT	1/7 S	ESCR	220/50 126	96	1.9 1.5
R600a	LBP	QD76YT	NOT	1/6 S	ESCR	220/50 146	111	1.94 1.53
R600a	LBP	LU68PY	L	1/7 S	BLDC	220/50 120	91	1.65 1.3
R600a	LBP	LU68PY	L	1/5 S	BLDC	220/50 160	122	1.65 1.3

Model no	L140CY1	Refrigerant	R600a
Cooling capacity	230W	Input power	170W
Hose Power	1/3- HP	Temperature application	LBP
Displacement	14cm ³	Working Current	1.3A
Voltage	220V~240V/50Hz	COP	1.35W/W
Motor type	RSIR	Cylinder capacity	14cm ³
Cooling type	Need a fan motor	Weight	8.6±0.4kg



Private Picture Copyright : WWW.MBSM.PRO

Quick Details

Condition:	New	Applicable Industries:	Hotels, Restaurant, Home Use, Food Shop, Food & Beverage...
Showroom Location:	None	Video outgoing-inspection:	Not Available
Machinery Test Report:	Not Available	Marketing Type:	Ordinary Product
Brand Name:	Dongbei/OEM	Place of Origin:	Hubei, China
Application:	Refrigeration Parts	Type:	Refrigeration Compressor
Product name:	R600a 1/3 hp Refrigeration Commercial Freezer Compressor	Warranty:	1 year
Voltage:	220V~240V/50HZ	Refrigerant:	R600a
Cooling capacity:	230W	Horse Power:	1/3
Cylinder capacity:	14 Cubic Centimetre	Input power:	170W
Motor Type:	RSIR	Working current:	1.3A
After Warranty Service:	Online support	Weight:	8.6±0.4kg
Certification:	CCC/VDE	Local Service Location:	None
		After-sales Service Provided:	Online support



Private Picture Copyright : WWW.MBSM.PRO

COOLING CAPACITY	230W
REFRIGERANTS	R600a
INPUT POWER	170W
HORSE POWER	1/3-
DISPLACEMENT	14cm ³



Model no	L140CY1	Refrigerant	R600a
Cooling capacity	230W	Input power	170W
Hose Power	1/3- HP	Temperature application	LBP
Displacement	14cm ³	Working Current	1.3A
Voltage	220V~240V/50Hz	COP	1.35W/W
Motor type	RSIR	Cylinder capacity	14cm ³
Cooling type	Need a fan motor	Weight	8.6±0.4kg

Private Picture Copyright : WWW.MBSM.PRO

PDF

Compressor, hermetic, medium temperature, 7 HP, r22, POE, MT80HP4, MT80 HP4, 400/3/50, 460/3/60 volt, 1-3/4" RL – 1-1/8" x 1-1/4" RL – 3/4"

Category: compressor

written by www.mbsm.pro | 20 December 2021



Private Picture Copyright : WWW.MBSM.PRO

Product details

Gross weight 41.58 kg

Net weight 39.1 kg

EAN 5702428839525

Approval standard	CE UL
Brand technique	Reciprocating compressor
Capacity control	Fixed speed
Colour	Blue
Compressor power supply [V/Ph/Hz]	400/3/50 460/3/60
Configuration code	Single
Connection type	Rotolock
Cylinder	2
Description	MT080-4
Diameter [mm]	288 mm
Discharge connection height [mm]	74 mm
Discharge connection mounting torque [Nm]	90 Nm
Discharge connection pipe size [in]	3/4 in

Discharge connection rotolock size [in]	1 1/4 in
Discharge connection size [in]	1 1/4 in
Discharge connection sleeve pipe size [in]	3/4 in
Drawing number	8502012g
Economizer	No
Factory HP [bar]	25 bar
Factory LP [bar]	25 bar
Fitting remark	(shipped with rotolock version only)
Fitting sleeve	ODF
Fitting standard	Rotolock
Frequency [Hz]	50/60
Gauge port HP	None
Gauge port LP	Schrader
Generation code	B
Glass mounting	Threaded
Glass torque [Nm]	50 Nm
GP LP torque [Nm]	15 Nm
High side max pressure (Ps)	27.8 bar
High Side TS Max	150 °C
High Side TS Min	-35 °C
High Side Volume	0.6 L
High value of nominal voltage at 50Hz [V]	400 V
High value of nominal voltage at 60Hz [V]	460 V
High value of voltage range at 50Hz [V]	460 V
High value of voltage range at 60Hz [V]	506 V
IP protection class	IP55 (with cable gland)
Low side max pressure (Ps)	18.4 bar
Low Side TS Max	50 °C
Low Side TS Min	-35 °C
Low Side Volume	16.5 L
Low value of nominal voltage at 50Hz [V]	380 V
Low value of nominal voltage at 60Hz [V]	460 V
Low value of voltage range at 50Hz [V]	340 V
Low value of voltage range at 60Hz [V]	414 V
LRA	80 A
MCC	18 A
Model number	MT80HP4AVE
Motor protection	Internal overload protector
Mounting torque [Nm]	15 Nm
Nominal cooling capacity 60 kBTU/h	80.2 kBTU/h
Nominal cooling capacity at 50Hz	17.8 kW
Nominal cooling capacity at 60Hz	23.5 kW
Number of starts per hour [Max]	12
Oil charge [L]	1.8 L
Oil equalization	3/8" flare SAE
Oil equalization torque [Nm]	30 Nm

Oil reference	160P
Packaging height [mm]	455 mm
Packaging length [mm]	395 mm
Packaging weight [Kg]	44 kg
Packaging width [mm]	365 mm
Packing format	Single pack
Packing quantity	1
Phase	3
Power connections	Spade
Refrigerant	R22
Refrigerant charge [kg] [Max]	5 kg
Relief valve	30 bar/8 bar
Rotational speed at 50Hz [rpm]	2900 rpm
Rotational speed at 60Hz [rpm]	3500 rpm
Segment usage	Air conditioning Refrigeration MT
Shipped fittings	Suction and discharge solder sleeves, rotolock nuts and gaskets
Shipped instructions	Installation instructions
Shipped mounting	Mounting kit with grommets, bolts, nuts, sleeves and washers
Shipped oil	Initial oil charge
Suction connection height [mm]	265 mm
Suction connection mounting torque [Nm]	110 Nm
Suction connection pipe size [in]	1 1/8 in
Suction connection rotolock size [in]	1 3/4 in
Suction connection size [in]	1 3/4 in
Suction connection sleeve pipe size [in]	1 1/8 in
Swept volume [cm ³]	135.78 cm ³
Technology	Reciprocating
Test dif [bar] [Max]	30 bar
Test HP [bar] [Max]	30 bar
Test LP [bar] [Max]	25 bar
Torque earth [Nm]	3 Nm
Torque power [Nm]	3 Nm
Total height [mm]	413 mm
Type	MT
Type designation	Compressor
Viscosity [cP]	32 cP
Winding resistance for three-phase compressors with identical windings [Ohm]	1.94 Ohm
Description	

Product details

Gross weight 44.5 kg

Net weight 42 kg

EAN 5702428839525

Gross weight 44.5 kg

Net weight 42 kg

EAN 5702428839525

Approval standard	CE UL
Brand technique	Reciprocating compressor
Capacity control	Fixed speed
Colour	Blue
Compressor power supply [V/Ph/Hz]	400/3/50 460/3/60
Configuration code	Single
Connection type	Rotolock
Cylinder	2
Description	MT080-4
Diameter [mm]	288 mm
Discharge connection height [mm]	74 mm
Discharge connection mounting torque [Nm]	90 N-m
Discharge connection pipe size [in]	3/4 in
Discharge connection rotolock size [in]	1 1/4 in
Discharge connection size [in]	1 1/4 in
Discharge connection sleeve pipe size [in]	3/4 in
Drawing number	8502012g
Economizer	No
Factory HP [bar]	25 bar
Factory LP [bar]	25 bar
Fitting remark	(shipped with rotolock version only)
Fitting sleeve	ODF
Fitting standard	Rotolock
Frequency [Hz]	50/60
Gauge port HP	None
Gauge port LP	Schrader
Generation code	B
Glass mounting	Threaded
Glass torque [Nm]	50 N-m
GP LP torque [Nm]	15 N-m
High side max pressure (Ps)	27.8 bar
High Side TS Max	150 Â°C
High Side TS Min	-35 Â°C

High Side Volume	0.6 L
High value of nominal voltage at 50Hz [V]	400 V
High value of nominal voltage at 60Hz [V]	460 V
High value of voltage range at 50Hz [V]	460 V
High value of voltage range at 60Hz [V]	506 V
IP protection class	IP55 (with cable gland)
Low side max pressure (Ps)	18.4 bar
Low Side TS Max	50 Â°C
Low Side TS Min	-35 Â°C
Low Side Volume	16.5 L
Low value of nominal voltage at 50Hz [V]	380 V
Low value of nominal voltage at 60Hz [V]	460 V
Low value of voltage range at 50Hz [V]	340 V
Low value of voltage range at 60Hz [V]	414 V
LRA	80 A
MCC	18.5 A
Model number	MT80HP4AVE
Motor protection	Internal overload protector
Mounting torque [Nm]	15 N-m
Nominal cooling capacity 60 kBTU/h	80.2 kBtu/h
Nominal cooling capacity at 50Hz	17.8 kW
Nominal cooling capacity at 60Hz	23.5 kW
Number of starts per hour [Max]	12
Oil charge [L]	1.8 L
Oil equalization	3/8" flare SAE
Oil equalization torque [Nm]	30 N-m
Oil reference	160P
Packaging height [mm]	455 mm
Packaging length [mm]	395 mm
Packaging weight [Kg]	44 kg
Packaging width [mm]	365 mm
Packing format	Single pack
Packing quantity	1
Phase	3
Power connections	Spade
Refrigerant	R22
Refrigerant charge [kg] [Max]	5 kg
Relief valve	30 bar/8 bar
Rotational speed at 50Hz [rpm]	2900 rpm
Rotational speed at 60Hz [rpm]	3500 rpm
Segment usage	Air conditioning Refrigeration MT
Shipped fittings	Suction and discharge solder sleeves, rotolock nuts and gaskets
Shipped instructions	Installation instructions

Shipped mounting	Mounting kit with grommets, bolts, nuts, sleeves and washers
Shipped oil	Initial oil charge
Suction connection height [mm]	265 mm
Suction connection mounting torque [Nm]	110 N-m
Suction connection pipe size [in]	1 1/8 in
Suction connection rotolock size [in]	1 3/4 in
Suction connection size [in]	1 3/4 in
Suction connection sleeve pipe size [in]	1 1/8 in
Swept volume [cm ³]	135.78 cm ³
Technology	Reciprocating
Test dif [bar] [Max]	30 bar
Test HP [bar] [Max]	30 bar
Test LP [bar] [Max]	25 bar
Torque earth [Nm]	3 N-m
Torque power [Nm]	3 N-m
Total height [mm]	413 mm
Type	MT
Type designation	Compressor
Viscosity [cP]	32 cP
Winding resistance for three-phase compressors with identical windings [Ohm]	1.94 Ohm
Approval standard	CE UL
Brand technique	Reciprocating compressor
Capacity control	Fixed speed
Colour	Blue
Compressor power supply [V/Ph/Hz]	400/3/50 460/3/60
Configuration code	Single
Connection type	Rotolock
Cylinder	2
Description	MT080-4
Diameter [mm]	288 mm
Discharge connection height [mm]	74 mm
Discharge connection mounting torque [Nm]	90 N-m
Discharge connection pipe size [in]	3/4 in
Discharge connection rotolock size [in]	1 1/4 in
Discharge connection size [in]	1 1/4 in
Discharge connection sleeve pipe size [in]	3/4 in
Drawing number	8502012g
Economizer	No
Factory HP [bar]	25 bar
Factory LP [bar]	25 bar
Fitting remark	(shipped with rotolock version only)
Fitting sleeve	ODF

Fitting standard	Rotolock
Frequency [Hz]	50/60
Gauge port HP	None
Gauge port LP	Schrader
Generation code	B
Glass mounting	Threaded
Glass torque [Nm]	50 N-m
GP LP torque [Nm]	15 N-m
High side max pressure (Ps)	27.8 bar
High Side TS Max	150 Â°C
High Side TS Min	-35 Â°C
High Side Volume	0.6 L
High value of nominal voltage at 50Hz [V]	400 V
High value of nominal voltage at 60Hz [V]	460 V
High value of voltage range at 50Hz [V]	460 V
High value of voltage range at 60Hz [V]	506 V
IP protection class	IP55 (with cable gland)
Low side max pressure (Ps)	18.4 bar
Low Side TS Max	50 Â°C
Low Side TS Min	-35 Â°C
Low Side Volume	16.5 L
Low value of nominal voltage at 50Hz [V]	380 V
Low value of nominal voltage at 60Hz [V]	460 V
Low value of voltage range at 50Hz [V]	340 V
Low value of voltage range at 60Hz [V]	414 V
LRA	80 A
MCC	18.5 A
Model number	MT80HP4AVE
Motor protection	Internal overload protector
Mounting torque [Nm]	15 N-m
Nominal cooling capacity 60 kBTU/h	80.2 kBtu/h
Nominal cooling capacity at 50Hz	17.8 kW
Nominal cooling capacity at 60Hz	23.5 kW
Number of starts per hour [Max]	12
Oil charge [L]	1.8 L
Oil equalization	3/8" flare SAE
Oil equalization torque [Nm]	30 N-m
Oil reference	160P
Packaging height [mm]	455 mm
Packaging length [mm]	395 mm
Packaging weight [Kg]	44 kg
Packaging width [mm]	365 mm
Packing format	Single pack
Packing quantity	1
Phase	3
Power connections	Spade

Refrigerant	R22
Refrigerant charge [kg] [Max]	5 kg
Relief valve	30 bar/8 bar
Rotational speed at 50Hz [rpm]	2900 rpm
Rotational speed at 60Hz [rpm]	3500 rpm
Segment usage	Air conditioning Refrigeration MT
Shipped fittings	Suction and discharge solder sleeves, rotolock nuts and gaskets
Shipped instructions	Installation instructions
Shipped mounting	Mounting kit with grommets, bolts, nuts, sleeves and washers
Shipped oil	Initial oil charge
Suction connection height [mm]	265 mm
Suction connection mounting torque [Nm]	110 N-m
Suction connection pipe size [in]	1 1/8 in
Suction connection rotolock size [in]	1 3/4 in
Suction connection size [in]	1 3/4 in
Suction connection sleeve pipe size [in]	1 1/8 in
Swept volume [cm³]	135.78 cm ³
Technology	Reciprocating
Test dif [bar] [Max]	30 bar
Test HP [bar] [Max]	30 bar
Test LP [bar] [Max]	25 bar
Torque earth [Nm]	3 N-m
Torque power [Nm]	3 N-m
Total height [mm]	413 mm
Type	MT
Type designation	Compressor
Viscosity [cP]	32 cP
Winding resistance for three-phase compressors with identical windings [Ohm]	1.94 Ohm
Refrigerant: R22, Segment usage: Air conditioning;Refrigeration MT, Compressor power supply [V/Ph/Hz]: 400/3/50 460/3/60	

Product details

Gross weight 44.5 kg

Net weight 42 kg

EAN 5702428839525

Gross weight 44.5 kg

Net weight 42 kg

EAN 5702428839525

Approval standard	CE UL
Brand technique	Reciprocating compressor
Capacity control	Fixed speed
Colour	Blue
Compressor power supply [V/Ph/Hz]	400/3/50 460/3/60
Configuration code	Single
Connection type	Rotolock
Cylinder	2
Description	MT080-4
Diameter [mm]	288 mm
Discharge connection height [mm]	74 mm
Discharge connection mounting torque [Nm]	90 N-m
Discharge connection pipe size [in]	3/4 in
Discharge connection rotolock size [in]	1 1/4 in
Discharge connection size [in]	1 1/4 in
Discharge connection sleeve pipe size [in]	3/4 in
Drawing number	8502012g
Economizer	No
Factory HP [bar]	25 bar
Factory LP [bar]	25 bar
Fitting remark	(shipped with rotolock version only)
Fitting sleeve	ODF
Fitting standard	Rotolock
Frequency [Hz]	50/60
Gauge port HP	None
Gauge port LP	Schrader
Generation code	B
Glass mounting	Threaded
Glass torque [Nm]	50 N-m
GP LP torque [Nm]	15 N-m
High side max pressure (Ps)	27.8 bar
High Side TS Max	150 Â°C
High Side TS Min	-35 Â°C
High Side Volume	0.6 L
High value of nominal voltage at 50Hz [V]	400 V
High value of nominal voltage at 60Hz [V]	460 V
High value of voltage range at 50Hz [V]	460 V
High value of voltage range at 60Hz [V]	506 V
IP protection class	IP55 (with cable gland)
Low side max pressure (Ps)	18.4 bar
Low Side TS Max	50 Â°C
Low Side TS Min	-35 Â°C
Low Side Volume	16.5 L

Low value of nominal voltage at 50Hz [V]	380 V
Low value of nominal voltage at 60Hz [V]	460 V
Low value of voltage range at 50Hz [V]	340 V
Low value of voltage range at 60Hz [V]	414 V
LRA	80 A
MCC	18.5 A
Model number	MT80HP4AVE
Motor protection	Internal overload protector
Mounting torque [Nm]	15 N-m
Nominal cooling capacity 60 kBTU/h	80.2 kBtu/h
Nominal cooling capacity at 50Hz	17.8 kW
Nominal cooling capacity at 60Hz	23.5 kW
Number of starts per hour [Max]	12
Oil charge [L]	1.8 L
Oil equalization	3/8" flare SAE
Oil equalization torque [Nm]	30 N-m
Oil reference	160P
Packaging height [mm]	455 mm
Packaging length [mm]	395 mm
Packaging weight [Kg]	44 kg
Packaging width [mm]	365 mm
Packing format	Single pack
Packing quantity	1
Phase	3
Power connections	Spade
Refrigerant	R22
Refrigerant charge [kg] [Max]	5 kg
Relief valve	30 bar/8 bar
Rotational speed at 50Hz [rpm]	2900 rpm
Rotational speed at 60Hz [rpm]	3500 rpm
Segment usage	Air conditioning Refrigeration MT
Shipped fittings	Suction and discharge solder sleeves, rotolock nuts and gaskets
Shipped instructions	Installation instructions
Shipped mounting	Mounting kit with grommets, bolts, nuts, sleeves and washers
Shipped oil	Initial oil charge
Suction connection height [mm]	265 mm
Suction connection mounting torque [Nm]	110 N-m
Suction connection pipe size [in]	1 1/8 in
Suction connection rotolock size [in]	1 3/4 in
Suction connection size [in]	1 3/4 in
Suction connection sleeve pipe size [in]	1 1/8 in
Swept volume [cm3]	135.78 cm3

Technology	Reciprocating
Test dif [bar] [Max]	30 bar
Test HP [bar] [Max]	30 bar
Test LP [bar] [Max]	25 bar
Torque earth [Nm]	3 N-m
Torque power [Nm]	3 N-m
Total height [mm]	413 mm
Type	MT
Type designation	Compressor
Viscosity [cP]	32 cP
Winding resistance for three-phase compressors with identical windings [Ohm]	1.94 Ohm
Approval standard	CE UL
Brand technique	Reciprocating compressor
Capacity control	Fixed speed
Colour	Blue
Compressor power supply [V/Ph/Hz]	400/3/50 460/3/60
Configuration code	Single
Connection type	Rotolock
Cylinder	2
Description	MT080-4
Diameter [mm]	288 mm
Discharge connection height [mm]	74 mm
Discharge connection mounting torque [Nm]	90 N-m
Discharge connection pipe size [in]	3/4 in
Discharge connection rotolock size [in]	1 1/4 in
Discharge connection size [in]	1 1/4 in
Discharge connection sleeve pipe size [in]	3/4 in
Drawing number	8502012g
Economizer	No
Factory HP [bar]	25 bar
Factory LP [bar]	25 bar
Fitting remark	(shipped with rotolock version only)
Fitting sleeve	ODF
Fitting standard	Rotolock
Frequency [Hz]	50/60
Gauge port HP	None
Gauge port LP	Schrader
Generation code	B
Glass mounting	Threaded
Glass torque [Nm]	50 N-m
GP LP torque [Nm]	15 N-m
High side max pressure (Ps)	27.8 bar
High Side TS Max	150 Â°C

High Side TS Min	-35 Â°C
High Side Volume	0.6 L
High value of nominal voltage at 50Hz [V]	400 V
High value of nominal voltage at 60Hz [V]	460 V
High value of voltage range at 50Hz [V]	460 V
High value of voltage range at 60Hz [V]	506 V
IP protection class	IP55 (with cable gland)
Low side max pressure (Ps)	18.4 bar
Low Side TS Max	50 Â°C
Low Side TS Min	-35 Â°C
Low Side Volume	16.5 L
Low value of nominal voltage at 50Hz [V]	380 V
Low value of nominal voltage at 60Hz [V]	460 V
Low value of voltage range at 50Hz [V]	340 V
Low value of voltage range at 60Hz [V]	414 V
LRA	80 A
MCC	18.5 A
Model number	MT80HP4AVE
Motor protection	Internal overload protector
Mounting torque [Nm]	15 N-m
Nominal cooling capacity 60 kBTU/h	80.2 kBtu/h
Nominal cooling capacity at 50Hz	17.8 kW
Nominal cooling capacity at 60Hz	23.5 kW
Number of starts per hour [Max]	12
Oil charge [L]	1.8 L
Oil equalization	3/8" flare SAE
Oil equalization torque [Nm]	30 N-m
Oil reference	160P
Packaging height [mm]	455 mm
Packaging length [mm]	395 mm
Packaging weight [Kg]	44 kg
Packaging width [mm]	365 mm
Packing format	Single pack
Packing quantity	1
Phase	3
Power connections	Spade
Refrigerant	R22
Refrigerant charge [kg] [Max]	5 kg
Relief valve	30 bar/8 bar
Rotational speed at 50Hz [rpm]	2900 rpm
Rotational speed at 60Hz [rpm]	3500 rpm
Segment usage	Air conditioning Refrigeration MT
Shipped fittings	Suction and discharge solder sleeves, rotolock nuts and gaskets

Shipped instructions	Installation instructions
Shipped mounting	Mounting kit with grommets, bolts, nuts, sleeves and washers
Shipped oil	Initial oil charge
Suction connection height [mm]	265 mm
Suction connection mounting torque [Nm]	110 N-m
Suction connection pipe size [in]	1 1/8 in
Suction connection rotolock size [in]	1 3/4 in
Suction connection size [in]	1 3/4 in
Suction connection sleeve pipe size [in]	1 1/8 in
Swept volume [cm³]	135.78 cm ³
Technology	Reciprocating
Test dif [bar] [Max]	30 bar
Test HP [bar] [Max]	30 bar
Test LP [bar] [Max]	25 bar
Torque earth [Nm]	3 N-m
Torque power [Nm]	3 N-m
Total height [mm]	413 mm
Type	MT
Type designation	Compressor
Viscosity [cP]	32 cP
Winding resistance for three-phase compressors with identical windings [Ohm]	1.94 Ohm







Private Picture Copyright : WWW.MBSM.PRO

[Mbsm_dot_pro_private_PDF_MTZ80HP4-1Télécharger](#)

[Mbsm_dot_pro_private_PDF_MTZ80HP4Télécharger](#)

Compresseur à piston Danfoss Maneurop MT22JC5PVE (2.0HP / 1PH) Compresseur à piston Danfoss Maneurop MT22JC4AVE (2.0HP / 3PH) Compresseur à piston Danfoss Maneurop MT28JC5PVE (2.3HP / 1PH) Compresseur à piston Danfoss Maneurop MT22JC4AVE (2.0HP / 3PH) Compresseur à piston Danfoss Maneurop MT28JC5PVE (2.3HP / 1PH) Compresseur à piston Danfoss Maneurop 3PH (2.3HP / 1PH) 2.6HP / 1PH) Compresseur à piston Danfoss Maneurop MT32JF4DVE (2.6HP / 3PH); Compresseur à piston Danfoss Maneurop MT36JG5CVE (3.0HP / 1PH) Compresseur à piston Danfoss Maneurop MT36JG4FVE (3.0HP / 3PH) Compresseur à piston Danfoss Maneurop MT40JH4EVE (3.3HP / 3PH) Danfoss Maneurop Compresseur à piston MT36JG4FVE (3.0HP / 3PH) Compresseur à piston Danfoss Maneurop MT40JH4EVE (3.3HP / 3PH) Danfoss Maneurop Compresseur à piston MT36JG4FVE (3.0HP / 3PH) Compresseur à piston Danfoss Maneurop MT40JH4EVE (3.3HP / 3PH) Compresseur à piston Danfoss Maneurop 3KFHB4 (3.6HP / 3PH) 4.0HP / 3PH) Compresseur à piston Danfoss Maneurop MT56HL4BVE (4.6HP / 3PH) Compresseur à piston Danfoss Maneurop MT64HM4DVE (5.3HP / 3PH) Compresseur à piston Danfoss Maneurop MT72HN4AVE (6.0HP / 3PH) Compresseur à piston Danfoss Maneurop MT80HP4AVE (6.6HP / 3PH) Compresseur à piston Danfoss Maneurop MT72HN4AVE (6.0HP / 3PH) Compresseur à piston Danfoss Maneurop MT80HP4AVE (6.6HP / 3PH) Compresseur à piston Danfoss Maneurop 4.0 Compresseur à piston MT144HV4AVE (12,0HP / 3PH) Compresseur à piston Danfoss Maneurop MT160HW4EVE (13.3HP / 3PH) Compresseur à piston Danfoss Maneurop MTZ22JC5VE (2.0HP / 1PH); [R134A, R404] Compresseur à piston Danfoss Maneurop MTZ22JC4AVE

(2.0HP / 3PH); [R134A, R404] Compresseur à piston Danfoss Maneurop MTZ28JE5AVE
(2,3 HP / 1PH); [R134A, R404] Compresseur à piston Danfoss Maneurop MTZ28JE4AVE
(2,3 HP / 3PH); [R134A, R404] Compresseur à piston Danfoss Maneurop MTZ32JF5AVE
(2,6 CV / 1PH); [R134A, R404] Compresseur à piston Danfoss Maneurop MTZ32JF4BVE
(2.6HP / 3PH); [R134A, R404] Compresseur à piston Danfoss Maneurop MTZ36JG5AVE
(3.0HP / 1PH); [R134A, R404] Compresseur à piston Danfoss Maneurop MTZ36JG4BVE
(3.0HP / 3PH); [R134A, R404] Compresseur à piston Danfoss Maneurop MTZ40JH4AVE
(3,3 CV / 3PH); [R134A, R404] Compresseur à piston Danfoss Maneurop MTZ50HK4CVE
(4,0 CV / 3PH); [R134A, R404] Compresseur à piston Danfoss Maneurop MTZ56HL4BVE
(4,6 CV / 3PH); [R134A, R404] Compresseur à piston Danfoss Maneurop MTZ64HM4CVE
(5,3 HP / 3PH); [R134A, R404] Compresseur à piston Danfoss Maneurop MTZ72HN4AVE
(6,0 CV / 3PH); [R134A, R404] Compresseur à piston Danfoss Maneurop MTZ80HP4AVE
(6,6 CV / 3PH); [R134A, R404] Compresseur à piston Danfoss Maneurop MTZ100HS4VE
(8,3 CV / 3 PH); [R134A, R404] Compresseur à piston Danfoss Maneurop MTZ125HU4VE
(10.0HP / 3PH); [R134A, R404] Compresseur à piston Danfoss Maneurop MTZ144HV4AVE
(12,0 HP / 3PH); [R134A, R404] Compresseur à piston Danfoss Maneurop
MTZ160HE4AVE (13,3 HP / 3PH); [R134A, R404] Compresseur à piston Danfoss
Maneurop NTZ048A4LR1A (2.0HP / 3PH); [R134A, R404, R507] Compresseur à piston
Danfoss Maneurop NTZ068A4LR1A (3,5 CV / 3PH); [R134A, R404, R507] Compresseur à
piston Danfoss Maneurop NTZ096A4LR1A (4,5 CV / 3PH); [R134A, R404, R507]
Compresseur à piston Danfoss Maneurop NTZ108A4LR1A (5,0 CV / 3PH); [R134A, R404,
R507] Compresseur à piston Danfoss Maneurop NTZ136A4LR1A (6,5 CV / 3PH); [R134A,
R404, R507] Compresseur à piston Danfoss Maneurop NTZ215A4LR1A (10,0 HP /
3PH); [R134A, R404, R507] Compresseur à piston Danfoss Maneurop NTZ271A4LR1A
(13.0HP / 3PH); [R134A, R404, R507] COMPRESSEUR MANEUROP 2.0HP MT22 MANEUROPE
2.0HP MT22 COMPRESSEUR MANEUROP COMPRESSEUR MTZ-22JE-4VE R404A MANEUROPE 2.30HP
MT28JE-5PVE MT28-5VI / MT28-5VM COMPRESSEUR MANEUROP 2.30HP MT28JE-5PVE MT28-5VI
/ MT28-5VM COMPRESSEUR MANEUROPEUR 2.30H5 / R404A) COMPRESSEUR MANEUROP 2.8HP
MTZ32-5VM (R134a / R404A / R507) COMPRESSEUR MANEUROP MT32JF5MVE 2-3 / 4HP
((R22) COMPRESSEUR MANEUROP 3.0HP MT36JG4FVE (MT36-4VI / MT36-4VM) (R22)
COMPRESSEUR 3.0HP COMPRESSEUR MT36 MANEUROP 3.3HP MT40JH4EVE COMPRESSEUR
MANEUROP 3.3HP MTZ40-JH4AVE COMPRESSEUR (R407A / C / F / R134A / R404A / R507)
Compresseur MANEUROP MTZ-36-JG4AVE (R407C / R134a / R404A-R407C / R134a / R404A)
-Compresseur JH4AVE (R134a / R404A) – Compresseur 3.3HP 3PH MANEUROP MTZ-44-
HJ4AVE (R134a / R404A) – 3. 5HP 3PH MANEUROP 4HP MTZ-50HK-4CVE (MTZ50-4VI /
MTZ50-4VM) COMPRESSEUR (R134A / R404A) MANEUROP MTZ56HL3BVE R407c, R134a, R507a,
R404a compresseur MANEUROP MT-64-4VM COMPRESSEUR MANEUR 64-4VM COMPRESSEUR
MANEUR COMPRESSEUR MT72-4VM COMPRESSEUR MANEUROP MT-80-4VM (6.5HP) Compresseur
MANEUROP 6.6HP MT81HP4AVE COMPRESSEUR MANEUROP MTZ80HM4DVE COMPRESSEUR MANEUROP
8.5HP MT100-4VM COMPRESSEUR MANEUROPE 10HP MT100-4VM (MT100HS4DVE) COMPRESSEUR
10HP MT100-4VM (MT100HS4DVE) COMPRESSEUR MT12M10 MANHOP 4-COMPRESSEUR 10HP R22)
COMPRESSEUR MANEUROP 10HP MTZ125HW4AVE (R404A / R134A / R507 / R407C)
COMPRESSEUR MANEUROPE 12HP MT144-4VM COMPRESSEUR MANEUROPE 13.3HP MT160-4VM
(MT160HW4DVE) COMPRESSEUR MANZVMER 10 COMPRESSEUR MANZVM4 (MT160HW4DVE) / 2 ‘)
SER. KIT POUR MT-28 MANEUROP 7703009 (1-1 / 8 ‘& 3/4’) SER.