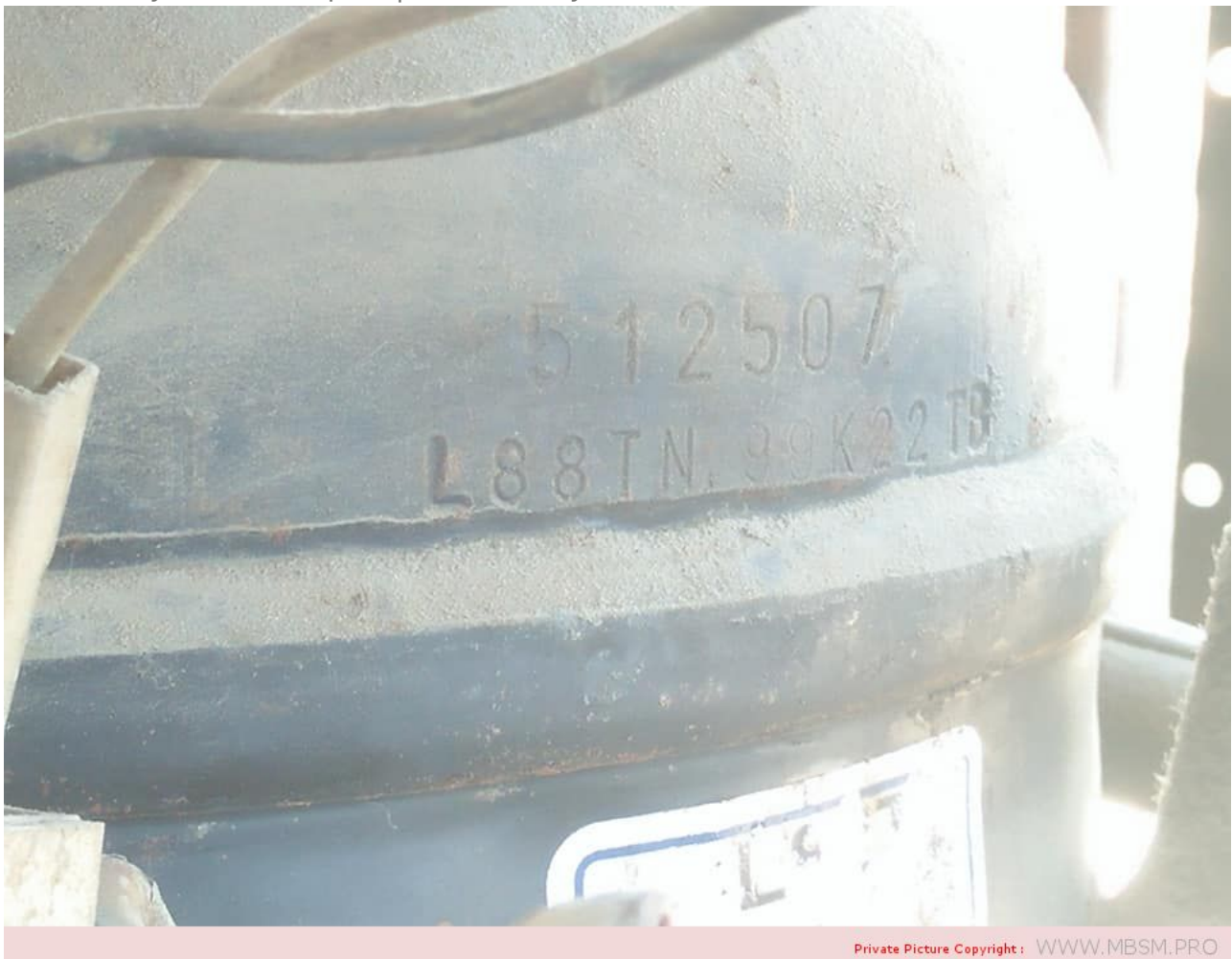


Mbsm.pro, Hermetic, Compressor,
Electrolux, L88TN, 3/8 Hp ++, R-22,
HMBP, Q=416W, tk-15°C/, tc55, 230V
50Hz, L88TN , ACC, ALPENINOX, ASCASO,
BARLINE ,L88TN, CUBIGEL, EUNASA,
EURFRIGOR , GEV, ICEMATIC, ITV,
SCOTSMAN, SIMAG, ZANUSSI

Category: compressor

written by www.mbsm.pro | 16 January 2022



Private Picture Copyright : WWW.MBSM.PRO

Mbsm.pro, Hermetic, Compressor, Electrolux, L88TN, 3/8 Hp ++, R-22, HMBP,
Q=416W, tk-15°C/, tc55, 230V 50Hz, L88TN , ACC, ALPENINOX, ASCASO, BARLINE
,L88TN, CUBIGEL, EUNASA, EURFRIGOR , GEV, ICEMATIC, ITV, SCOTSMAN, SIMAG,
ZANUSSI

Mbsm.pro, Huayi, Compressor, B25H,

R134a, LBP, COMPRESSORS -B SERIES,
B25H5 127V, B25H 220V, Water
Dispenser, 220-240V/50HZ, 55w, 1/14
hp, 220-240V/60HZ, 63w, 1/12hp

Category: compressor

written by www.mbsm.pro | 16 January 2022



Mbsm.pro, Huayi, Compressor, B25H, R134a, LBP, COMPRESSORS -B SERIES, B25H5
127V, B25H 220V, Water Dispenser, 220-240V/50HZ, 55w, 1/14 hp, 220-240V/60HZ,
63w, 1/12hp

**Mbsm.pro, Panasonic, rotary,
compressor, rotary compressor, R22,
220-240V 50HZ, 2jd550D3AA03, 2JD550D,
35.000 BTU, R1a 5.65 A, Lra 21.0 A,
4.375 Hp, 2.91 Ton**

Category: compressor

written by www.mbsm.pro | 16 January 2022

JD550D3AA03

HERMALLY PROTECTED R22

PH 50Hz 220 - 240V

Matsushita Electric Industrial Co., Ltd.

SERIAL NO. J55A
7077944

C0036563



WARNING / DANGER



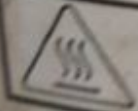
Danger of Electric Shock

- Earth the equipment.
- Disconnect power before work.
- Mount the terminal cover in place.



Danger of Explosion or Fire

- Do not use unprescribed ref. & oils.
- Do not operate air intake into the refrigerant cycle.
- Wear protective goggles.



Caution , Hot Surface

- Do not touch with bare hands.

Mbsm.pro, Panasonic, rotary, compressor, rotary compressor, R22, 220-240V 50HZ, 2jd550D3AA03, 2JD550D, 35.000 BTU, R1a 14.7, Lra 68.0, 4.375 Hp, 2.91 Ton

Mbsm.pro, Compressor, Embraco, Aspera, EMY26CLC, LBP, R600a, 220 – 240V/1/50Hz, 1/12 HP, RSIR, LRA 7.8 A, 83 Wat

Category: compressor

written by www.mbsm.pro | 16 January 2022



Private Picture Copyright: WWW.MBSM.PRO

Compressor, Embraco, Aspera, EMY26CLC, LBP, R600a, 220 – 240V/1/50Hz, 1/12 HP, RSIR, LRA 7.8 A, 83 Wat

Mbsm.pro, Compressor, Hermetic, Tecumseh, AEZ9440T, R22, 1/3 hp++,

MHBP

Category: compressor

written by www.mbsm.pro | 16 January 2022



Private Picture Copyright : WWW.MBSM.PRO

Basic Info.

Model NO.AEZ9440TLubrication StyleLubricatedCooling SystemAir CoolingCylinder ArrangementBalanced Opposed ArrangementCylinder PositionHorizontalStructure TypeClosed TypeCompress LevelSingle-StageRefrigerant TypeFreonTypeReciprocatingPerformanceLow NoiseDrive ModeElectricPower SourceAC Power ConfigurationStationaryMaterialCopperPiston TypeClosedTrademarkTecumseh HermetiqueTransport PackagePalletSpecificationCE / RoHsOriginChinaHS Code8414301900

Product Description

Tecumseh Hermetique R134a / R404a/ R22 reciprocating compressor

Hermetique R22

HBP

For Air

Conditioning

Applications.

Features:

Anti Vibration
mounts supplied
Charged with
mineral oil and
dry nitrogen
Crankcase
heater on TAG
models
Fan cooling
required on all
models

Specifications:
Capacity Rating
Basis: 35°C
Ambient, 11K
Return Gas
Superheat,
54.5°C
Condensing,
46.2°C Liquid
entering
Expansion
Valve.

Current FLA are
given at
nominal
voltage, rated
conditions and
7.2°C
Evaporating
Temperature.

Motor Types:
PSC = Permanent
Split
Capacitor, 1
Phase, 50 Hz.
220-240 Volt
3Ø: 3 Phase, 50
Hz, 400 Volt

Expansion
Device:
C = Capillary
Tube
C/V = Capillary
Tube or
Expansion Valve
R22 Hermetic

Model No.	Nominal HP	Displ. cm ³ /rev	Motor Type	Nominal Current FLA	Exp. Device	Oil Charge cm ³	Connections: inches		
cm ³	Discharge Proc.								
AE 5465E	1/2	12.05	PSC	3.2	C	450	3/8 Tube	1/4 Tube	3/8 Tube
AJ 5510F	3/4	18.6	PSC	5.2	C	887	3/8 Tube	1/4 Tube	1/4 Tube
AJ 5512E	1	21.75	PSC	5.9	C	887	3/8 Tube	1/4 Tube	1/4 Tube
AJ 5513E	1	24.2	PSC	6	C	887	3/8 Tube	1/4 Tube	1/4 Tube
AJ 5515E	1 1/4	25.95	PSC	7.2	C	887	1/2 Tube	5/16 Tube	1/4 Tube
AJ 5518E	1 1/2	32.7	PSC	9.3	C	887	1/2 Tube	5/16 Tube	1/4 Tube
AJ 5519E	1 1/2	34.45	PSC	9.96	C	887	1/2 Tube	5/16 Tube	1/4 Tube
FH 5522E	1 3/4	39.95	PSC	9	C	1330	5/8 Tube	3/8 Tube	5/16 Tube

TFH 5522E	1 3/4	39.95	3Ø	3.8	C/V	1330	5/8 Tube	3/8 Tube	5/16 Tube
FH 5524E	2	43.5	PSC	10	C	1330	5/8 Tube	3/8 Tube	5/16 Tube
TFH 5524E	2	43.5	3Ø	4	C/V	1330	5/8 Tube	3/8 Tube	5/16 Tube
FH 5527E	2 1/4	49.1	PSC	12	C	1330	5/8 Tube	3/8 Tube	5/16 Tube
TFH 5527E	2 1/4	49.1	3Ø	4.2	C/V	1330	5/8 Tube	3/8 Tube	5/16 Tube
FH 5531E	2 1/2	56.65	PSC	14.1	C	1330	3/4 Tube	3/8 Tube	5/16 Tube
TFH 5531E	2 1/2	56.65	3Ø	8	C/V	1330	3/4 Tube	3/8 Tube	5/16 Tube
FH5540E	3	74.25	PSC	18.6	C	1330	3/4 Tube	3/8 Tube	5/16 Tube
TFH 5540E	3	74.25	3Ø	6	C/V	1330	3/4 Tube	3/8 Tube	5/16 Tube
TFH 5540E	3	74.25	3Ø	6	C/V	1330	78	1/2 Valve	5/16 Tube
TAG 5546E	3 3/4	90.2	3Ø	6.6	C/V	1960	7/8 Tube	1/2 Tube	3/8 Tube
TAG 5553E	4	100.7	3Ø	7.4	C/V	1960	7/8 Tube	1/2 Tube	3/8 Tube
TAG 5561E	5	112.5	3Ø	9	C/V	1960	7/8 Tube	1/2 Tube	3/8 Tube
TAG 5568E	6	124.4	3Ø	9.6	C/V	1960	7/8 Tube	1/2 Tube	3/8 Tube
TAG 5573E	6 1/2	134.8	3Ø	11	C/V	1960	7/8 Tube	1/2 Tube	3/8 Tube

Hermetique R22
M/HBP

For Medium /
High
Temperature
Applications

Features:

Anti-Vibration
mounts supplied

Charged with
mineral oil and
dry nitrogen

Rotalock
suction valve
on CAJ/TAJ
models

Crankcase
heater on
FH/TFH and TAG
models

Oil sight glass
on FH/TFH and
TAG models

Fan cooling
required on all
models

All models suit
capillary tube
or expansion
valve operation

Rotalock
suction and
discharge
valves on
FH/TFH and TAG
models

Specifications:

Capacity Rating
 Basis: 35°C
 Ambient, 11K
 Return Gas
 Superheat,
 54.5°C
 Condensing,
 46°C Liquid
 entering
 Expansion
 Valve.

Current FLA are
 given at
 nominal
 voltage, rated
 conditions and
 7.2°C
 evaporating
 temperature.

Motor Types:

CSIR: Capacitor
 start,
 Induction run }
 1 Phase, 50 Hz,
 220-240 Volt

CSR: Capacitor
 start and run
 3Ø: 3 Phase, 50
 Hz, 400 Volt

Conversion:
 Watts x 3.412 =
 BTU/Hr BTU/Hr x
 0.293 = Watts

R22 Hermetic

Model No.	Nominal HP	Displ. cm ³ /rev	Motor Type	Nominal Oil Current Charge FLA	cm ³	Connections: inches	
	Suction	Discharge					
AEZ 4425E	1/5	4.5	CSIR	1.75	450	1/4 Tube	3/16 Tube
AEZ 4430E	1/4	5.7	CSIR	2.2	450	1/4 Tube	3/16 Tube
AEZ 4440E	1/3	7.55	CSIR	2.6	450	1/4 Tube	3/16 Tube
AEZ 9440T	1/3	7.55	CSR	2.03	450	3/8 Tube	1/4 Tube
CAE 4450E	3/8	9.4	CSIR	3.3	450	3/8 Tube	1/4 Tube
CAE 9450T	3/8	9.5	CSR	2.6	450	3/8 Tube	1/4 Tube
CAE 9460T	1/2	11.3	CSR	3.2	450	3/8 Tube	1/4 Tube
CAJ 9408T	5/8	15.2	CSR	3.68	887	1/2 Valve	5/16 Tube
CAJ 9510T	1	18.3	CSR	4.8	887	5/8 Valve	5/16 Tube
CAJ 9513T	1 1/8	24.2	CSR	5.9	887	5/8 Valve	5/16 Tube
CAJ 4517E	1 1/4	25.95	CSR	6.1	887	5/8 Valve	3/8 Tube
TAJ 4517T	1 1/2	25.95	3Ø	2.5	887	5/8 Valve	3/8 Tube
TAJ 4519T	1 1/2	34.45	3Ø	3.5	887	5/8 Valve	1/2 Valve
FH 4524F	2	43.5	CSR	9.55	1480	5/8 Valve	1/2 Valve
TFH 4524F	2	4.35	3Ø	3.9	1480	7/8 Valve	1/2 Valve
FH 4531F	2 1/2	56.65	CSR	12.6	1480	7/8 Valve	1/2 Valve
TFH4531F	2 1/2	56.65	3Ø	4.75	1480	7/8 Valve	1/2 Valve
TFH 4540F	3	74.25	3Ø	6.08	1480	7/8 Valve	1/2 Valve
TAG 4546T	4	90.2	3Ø	6.6	1960	7/8 Valve	5/8 Valve
TAG 4553T	4 1/2	100.7	3Ø	7.4	1960	7/8 Valve	5/8 Valve
TAG 4561T	5	112.5	3Ø	9	1960	1 7/8 Valve	5/8 Valve
TAG 4568T	6	124.4	3Ø	9.6	1960	1 7/8 Valve	5/8 Valve
TAG 4573T	6 1/2	134.8	3Ø	11	1960	1 7/8 Valve	5/8 Valve

Tecumseh
Hermetique
R134a
The world
renowned
L'Unite
Hermetique
compressors are
manufactured by
Tecumseh.

Features:

Charged with
polyolester oil
and dry
nitrogen

Crankcase
heater on
FH/TFH and TAG
models

Oil sight glass
on FH/TFH and
TAG models

Rotalock valves
are included
for all valve
connection
compressors

Anti-vibration
mounts supplied

Single Phase –
Medium High SST

Model No.	Nominal HP	Displacement: cm3/rev	Cooling	Oil Charge: ml
CAJ4476Y	5/8	21.75	Fan	887
CAJ4492Y	3/9	25.95	Fan	887
CAJ4511Y	1	32.7	Fan	887
FH4518Y	1 1/2	53.2	Fan	1480
FH4525Y	2	74.25	Fan	1480

Three Phase –
Medium High SST

Model No.	Nominal HP	Displacement: cm3/rev	Cooling	Oil Charge: ml
TAJ4511Y	1	32.7	Fan	887
TFH4518Y	1 1/2	53.2	Fan	1480
TFH4525Y	2	74.25	Fan	1480
TAG4528Y	2 1/2	90.2	Fan	1960
TAG4534Y	2 3/4	100.7	Fan	1960
TAG4537Y	3	112.5	Fan	1960
TAG4543Y	3 1/2	124.4	Fan	1960

Superceded
Models

Model No.	Nominal HP	Displacement: cm3/rev	Cooling	Oil Charge: ml
AEZ4425Y	1/5	7.55	Fan	450
AEZ4430Y	1/4	8.85	Fan	450
CAE4440Y	3/8	12.05	Fan	450
CAE4448Y	1/3	14.15	Fan	450
CAJ4452Y	1/3	15.2	Fan	887
CAE4456Y	1/2	16	Fan	450
CAJ4461Y	1/2	18.3	Fan	887

Tecumseh
Hermetique
R404A

The world
renowned
L'Unite
Hermetique
compressors are
manufactured by
Tecumseh.

Features:

Charged with
polyolester oil
and dry
nitrogen

Crankcase
heater on
FH/TFH and TAG
models

Oil sight glass
on FH/TFH and
TAG models

Rotalock valves
are included
for all valve
connection
compressors

Anti-vibration
mounts supplied

Specifications:

Capacity Rating
Basis: 35°C
Ambient, 11K
Return Gas
Superheat,
54.5°C
Condensing,
46°C Liquid
entering
Expansion
Valve.

Current FLA are
given at
nominal
voltage, rated
conditions and
7.2°C
Evaporating
Temperature.

Motor Types:

CSIR: Capacitor
Start,
Induction Run 1
Phase, 50 Hz,
220-240 Volt

CSR: Capacitor
Start and Run
3Ø: 3 Phase, 50
Hz, 400 Volt

All models are
also suitable
for operation
with R507

Single Phase –
Medium High SST

Model No.	Nominal HP	Displacement: cm ³ /rev	Cooling	Oil Charge: ml
CAJ9480Z	5/8	15.2	Fan	887
CAJ9510Z	1	18.3	Fan	887
CAJ9513Z	1 1/8	24.2	Fan	887
CAJ4517Z	1 1/4	25.95	Fan	887
CAJ4519Z	1 1/2	34.45	Fan	887
FH4522Z	1 3/4	39.95	Fan	1480
FH4524Z	2	43.5	Fan	1480
FH4531Z	2 1/2	56.65	Fan	1480
FH4540Z	3	74.25	Fan	1480

Three Phase –
Medium High SST

Model No.	Nominal HP	Displacement: cm ³ /rev	Cooling	Oil Charge: ml
TAJ9480Z	5/8	15.2	Fan	887
TAJ9510Z	1	18.3	Fan	887
TAJ9513Z	1 1/8	24.2	Fan	887
TAJ4517Z	1 1/4	25.95	Fan	887
TAJ4519Z	1 1/2	34.45	Fan	887
TFH4522Z	1 3/4	39.95	Fan	1480
TFH4524Z	2	43.5	Fan	1480
TFH4531Z	2 1/2	56.65	Fan	1480
TFH4540Z	3	74.25	Fan	1480
TAG4546Z	4	90.2	Fan	1960
TAG4553Z	4 1/2	100.7	Fan	1960
TAG4561Z	5	112.5	Fan	1960
TAG4568Z	6	124.4	Fan	1960
TAG4573Z	6 1/2	134.8	Fan	1960

Single Phase –
Low SST

Model No.	Nominal HP	Displacement: cm ³ /rev	Cooling	Oil Charge: ml
CAE2417Z	1/3	11.3	Fan	450
CAE2420Z	1/2	12.54	Fan	450
CAE2424Z	5/8	15	Fan	450
CAJ2428Z	1/2	15.2	Fan	887
CAJ2432Z	5/8	18.3	Fan	887
CAJ2446Z	3/4	26.15	Fan	887
CAJ2464Z	1 1/2	34.45	Fan	887
FH2480Z	2	53.2	Fan	1625
FH2511Z	2 1/2	74.25	Fan	1625

Three Phase –
Low SST

Model No.	Nominal HP	Displacement: cm ³ /rev	Cooling	Oil Charge: ml
TAJ2464Z	1 1/2	34.45	Fan	887
TFH2480Z	2	53.2	Fan	1625
TFH2511Z	2 1/2	74.25	Fan	1625
TAG2516Z	4	112.5	Fan	1960
TAG2522Z	5 1/2	134.8	Fan	1960

Three Phase –
Parallel
Applications

Model No.	Nominal HP	Displacement: cm3/rev	Application: SST	Cooling	Oil Charge: ml
TAGP4546Z	4	90.2	Medium	Fan	1960
TAGP4553Z	4 1/2	100.7	Medium	Fan	1960
TAGP4561Z	5	112.5	Medium	Fan	1960
TAGP4568Z	6	124.4	Medium	Fan	1960
TAGP4573Z	6 1/2	134.8	Medium	Fan	1960
TAGP2516Z	4	112.5	Low	Fan	1960
TAGP2522Z	5 1/2	134.8	Low	Fan	1960



Private Picture Copyright : WWW.MBSM.PRO

MEDIUM/HIGH BAK PRESSURE COMPRESSORS

Type	COMPRESSOR MODELS	Nominal Power (H.P.)				REFRIGERATION CAPACITY AT 50HZ Rafed 54.5°C Cond Temp (Watts)						VOLTAGE
			Refrigerant	Displacement (cm ³)	Oil charge (cm ³)	Evaporating Temperature						
						-25°C	-15°C	-10°C	0°C	+7.2°C	+15°C	
PISTON	AEZ4425E	1/5	R22	4.50	250	138	192	256	413	553	728	220-240V/1/50Hz
	AEZ4430E	1/4	R22	5.70	250	192	255	336	538	718	945	220-240V/1/50Hz
	AEZ3440E	1/3	R22	7.55	350	308	362	464	733	980	1298	220-240V/1/50Hz
	AEZ4440E	1/3	R22	7.55	350	308	362	464	733	980	1298	220-240V/1/50Hz
	AEZ9440T	1/3	R22	7.55	350	222	362	464	733	975	1302	220-240V/1/50Hz
	CAE4450E	3/7	R22	9.40	350	355	426	554	896	1212	1623	220-240V/1/50Hz
	CAE9450T	3/7	R22	9.40	350	256	426	554	896	1212	1623	220-240V/1/50Hz
	CAE9460T	1/2	R22	11.30	350	324	553	715	1134	1514	2000	220-240V/1/50Hz
	CAJ9480T TAJ9480T	5/8	R22	15.20	887	461	786	1011	1586	2103	2761	220-240V/1/50Hz 400V/3/50Hz
	CAJ9510T TAJ9510T	1	R22	18.30	887	545	956	1229	1909	2510	3266	220-240V/1/50Hz 400V/3/50Hz
	CAJ9513T TAJ9513T	1-1/8	R22	24.20	887	526	1074	1451	2411	3272	4366	220-240V/1/50Hz 400V/3/50Hz
	CAJ4517E TAJ4517T	1-1/4	R22	25.95	887	771	1233	1673	2727	3629	4743	220-240V/1/50Hz 400V/3/50Hz





Private Picture Copyright : WWW.MBSM.PRO

Mbsm_dot_pro_private_PDF_AEZ9440TTélécharger

Mbsm.pro, Compressor, ELECTROLUX, 3/4 Hp ++ (big), R-12, S26TY, HMBP

Category: compressor

written by www.mbsm.pro | 16 January 2022



Private Picture Copyright : WWW.MBSM.PRO

Private Picture Copyright : WWW.MBSM.PRO

Commercial R12 – Medium Suction Temperature

Capacity range (watts)	Aspera	Kirby	Old Kirby Model	Danfoss	L'Unite Hermetique	Unidad Electrolux	Kelvinator	Necchi	Bulkon
201-250		AE6LMY	AE67ZD7 AE6LMA	TL4B		L57PX	S88ND	M4J	
250-300								M5J	
301-350	A5144A	AE8MG	AE59ZF9 AE8LMA						
351-400		AE9MHY	AE4425A AE9MHA	FR6B	CAE59ZF9	L76PX		M7J	
401-450	A5160A			FR7.5B		L68TY	S54FD		
450-500	A6170A	AEV9LMY	AE7416A AE10LMA	FR8.5B	CAE41ZF11	L88TX	S44ND	M9J	
501-550							S54FD S44CFD	M11, A9	
551-600	T6185A	AE12LMY	AE12LJ	FR10B	CAE4440A	P12TY	S33FD S33TF		
601-650	E6187A			FR11B SC10B					
651-700		AE14LMY	AE7423A AE14LMA			P14TY			KB14B1
701-800	T6213A			SC12B	CAJ4452A			A13	
801-900		AE16LMY	AE16LMA AE16LJ	SC15B				N17	KB19B1
901-1000		AJ18MY	AJ7428A						KB19B1
1001-1200	T6215A	AJ22LMY	AJ7434A AJ22LJ	SC18B	CAJ4461A	S18TY	S5050FDH		KB23B1
1201-1400	J6220A	AJ26LMY	AJ7445A AJ26LJ	SC21B		S26TY	S7575FDH		KB26B1
1401-2000	J6226A	AJ34LMY	AJ7457A AJ34LJ		CAJ4511A	S34TY	S1010FDH		KB37B1
2001-2500	H6238A	AH49MHY	AH4514A		CAH4518A TAH4518A				
2501-3500	H6253A	AH74MHY	AH4521A		CAH4524A TAH4524A				



S26TY
R12
CE
Electrolux
COMPRESSORS

HMBP															
R12 50 Hz		CECOMAF (W)							ASHRAE		R12 50 Hz				
		-25	-15	5		10	7.2								
				W	COP		kcal/h	COP							
220-240V 50Hz ~I															
L45PX	1/6	F	4.50	77	131	325	1.68	391	330	1.91	C	300	8.4	RSIR	R
L57PX	1/5	F	5.67	97	171	422	1.84	505	427	2.10	C	300	9.5	RSIR	R
L76TX	1/5	F	7.57	131	223	545	1.84	654	553	2.07	C-V	300	9.5	CSIR	R
L88TY	1/4	F	8.85	165	276	646	1.87	766	652	2.11	C-V	300	10.0	CSIR	R
P12TY	3/8	F	12.00	209	356	871	1.82	1044	882	2.05	C-V	400	11.2	CSIR	R
P14TY	3/8	F	14.00	242	412	985	1.73	1176	996	1.96	C-V	400	11.5	CSIR	R
R18TY	1/2	F	18.10	277	533	1328	2.02	1586	1343	2.30	C-V	640	19.9	CSIR	R
X18TY	1/2	F	18.40	322	544	1323	1.95	1587	1340	2.20	C-V	500	16.1	CSIR	R
S26TY	3/4	F	25.93	391	770	1933	2.01	2307	1955	2.29	C-V	887	22.7	CSIR	R
S34TY	I	F	34.42	643	1171	2752	2.31	3255	2771	2.60	C-V	887	22.7	CSR	R
200-220/230V 50/60Hz ~I															
L45PX	1/6	F	4.50	77	131	325	1.59	391	330	1.79	C	300	8.4	RSIR	R
L57PX	1/5	F	5.67	97	173	389	1.75	456	390	1.96	C	300	9.5	RSIR	R
S18TY	1/2	F	18.10	277	533	1329	1.99	1586	1344	2.26	C-V	887	21.8	CSIR	R
X18TY	1/2	F	18.40	322	544	1323	1.93	1587	1340	2.18	C-V	500	16.1	CSIR	R
S26TY	3/4	F	25.93	391	770	1933	2.00	2307	1954	2.27	C-V	887	22.7	CSIR	R
S34TY	I	F	34.42	643	1171	2752	2.27	3255	2770	2.58	C-V	887	22.7	CSR	R

Private Picture Copyright : WWW.MBSM.PRO

Mbsm_dot_pro_private_PDF_S26TYTélécharger

Mbsm.pro, Compressor, ACC, Cubigel, Huayi, Electrolux, ZEM, MPT14LA, MPT14RA, LBP, R404A, R507, 1/2HP, 220-240V

Category: compressor

written by www.mbsm.pro | 16 January 2022



Private Picture Copyright : WWW.MBSM.PRO

Compressor Tecumseh L` Unite CAJ2432Z, LBP – R404A, 220 – 240V, 50 Hz, 1 phase, discharge: 18.3 cm³, oil type: POE, oil charge: 887 cm³, electrical equipment: CSR, cooling power 381 W at -35 / +40 °C, connection: suction: 1/2 inch, discharge: 5/16 inch, sound level: 56 dBA, start capacitor: 8 8 uF/250V, run capacitor: 15 uF/400V, expansion device: capillary or expansion valve, height: 271 mm, weight: 21.5kg

Type: Low back pressure (LBP)

Refrigerant: R404a/507

Displacement: 14.32cm³

Power: 1/2CV

Voltage: 230V – 50Hz

Single-phase

Motor type: CSR

Weight: 13.4 kg

Evaporation temperature

-40°C: 243W

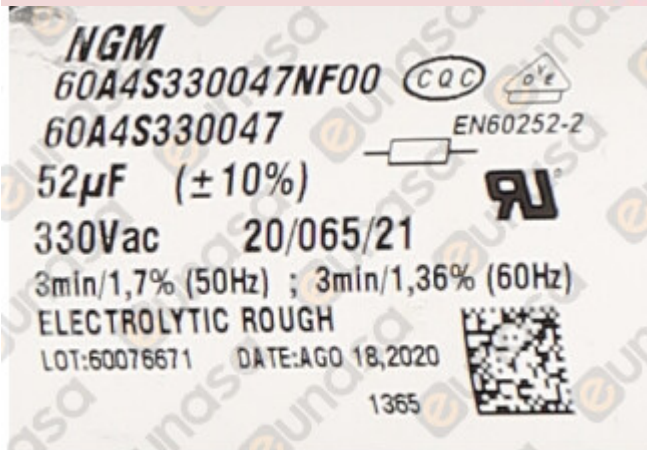
-30°C: 420W

-25°C: 535W

-10°C: 988W



Private Picture Copyright : WWW.MBSM.PRO



Private Picture Copyright : WWW.MBSM.PRO



Private Picture Copyright : WWW.MBSM.PRO

Mbsm_dot_pro_private_PDF_MPT14LATélécharger

Mbsm.pro, COPLAND, Compressor,
KCJ511HAE, KCJ511HAE-BXXX , HBP,
1-3/8 hp big ++, R-22 , 230 V, 50 Hz,
1PH , FAN, 350 ft3 / m

Category: compressor

written by www.mbsm.pro | 16 January 2022



Private Picture Copyright : WWW.MBSM.PRO

Technical Specification

Cooling Capacity (Btu/hr) 11275

Cooling Capacity (w) 3302

HP 1-3/8

LRA 54

COMPRESSOR MECHANICAL AND PHYSICAL DATA

Number of cylinders 2

Displacement @ 50 Hz, cu.m/h 3.2

Bore/Stroke, mm 3.5/1.9

Length/Width, mm 235/179

Height, mm 264

Net Weight, kg 21.5

Stub Suction, inch 5/16

Stub Discharge, inch 5/16

Oil Quantity, l 0.9

Base mounting (hole dia), mm NA (0.0)

Sound Pressure @ 1m (HT), dBA 57
Sound Power (HT), dBA 68
COMPRESSOR ELECTRICAL DATA (220/240V – 1~ – 50Hz)
Locked Rotor Current, A 25
Default Enclosure Class IP 21 (IEC 34)
ACCESSORIES OPTIONAL
Mounting Grommets Standard
Single Phase Equipment Relay, Start and Run Capacitor



Private Picture Copyright : WWW.MBSM.PRO

Horse Power
50HZ
Brand
COPLAND
Compressor Technology

HERMETIC

Model Name/Number

KCJ511HAE

Power

220V



Private Picture Copyright : WWW.MBSM.PRO

[Mbsm_dot_pro_private_PDF_KCJ511HAETélécharger](#)

[Mbsm_dot_pro_private_PDF_KCJ511HAE-1Télécharger](#)

Saunier Duval C25E

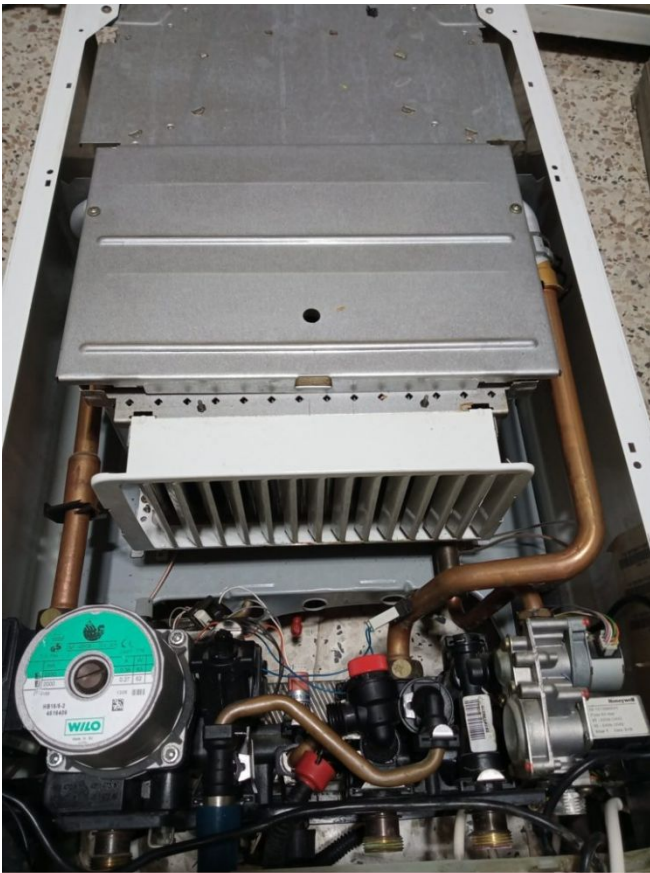
Category: Pictures

written by www.mbsm.pro | 16 January 2022





Private Picture Copyright: WWW.MBSM.PRO



Private Picture Copyright: WWW.MBSM.PRO

Thermostat d'ambiance ,Thermostat de sécurité,Marque IMIT,Italie

Category: Pictures

written by www.mbsm.pro | 16 January 2022







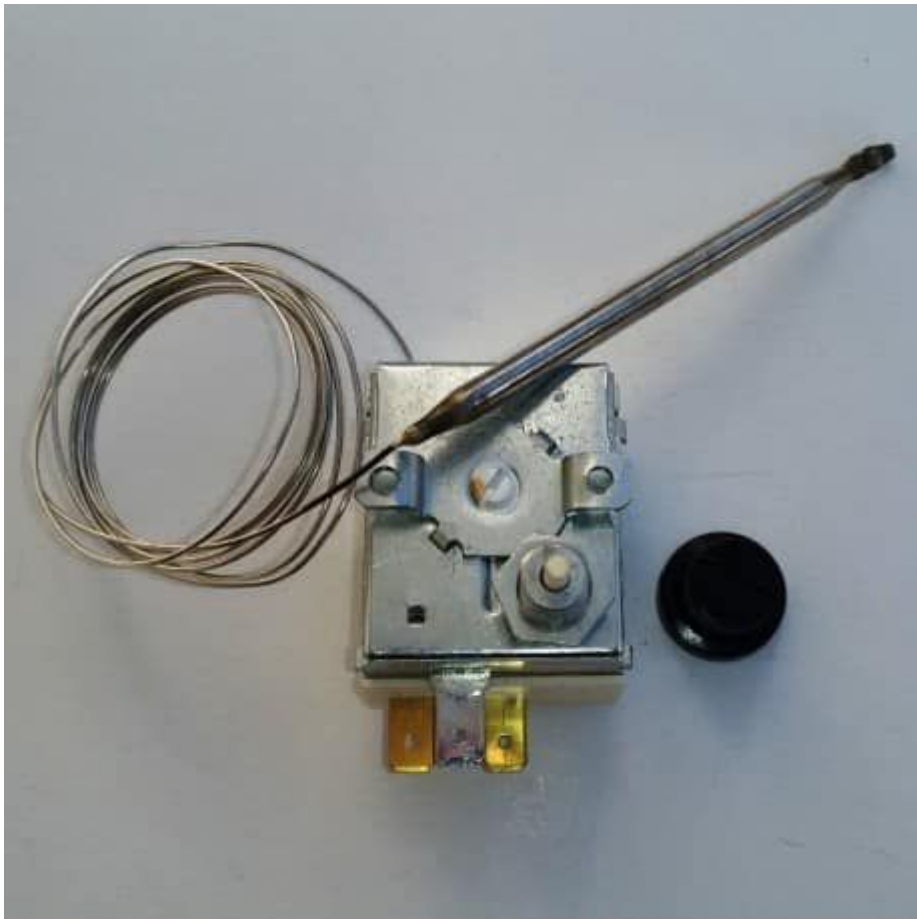






BSMI 28/14 C
TW 075°C TYPE TR2 9315
N.C. C-1 16(8)/A250V-798
N.O.C-2 8(4)/A250V-
0487 No. 15(2.5)/A250V-
Cat. IV





Private Picture Copyright: WWW.MBSM.PRO



Private Picture Copyright: WWW.MBSM.PRO





Private Picture Copyright: WWW.MBSM.PRO