

Mbsm.pro , Compressor ACC ,Cubigel
Huayi, Electrolux ZEM, GP12TG, HMBP-
R134a, 220-230V ,50/60Hz, 3.8 HP

Category: Solutions,Tester ok
written by Jamila | 3 October 2018



PictureS Mbsm Dot Pro : www.mbsm.pro

Mbsm.pro , Compressor ACC ,Cubigel Huayi, Electrolux ZEM, GP12TG, HMBP-R134a, 220-230V ,50/60Hz, 3.8 HP



cubigel

compressors

**THERMALLY
PROTECTED**

R134a

GP12TG

200-220V~50Hz PH1

220-230V~60Hz

CE

MADE IN
SPAIN

72081480231000

2
272

COMPRESSOR

Displacement (cm ³)	12
Diameter (mm)	29.37
Stroke (mm)	17.8
Net Weight (Kg)	11.2
Oil type	ISO VG 22 ESTER
Oil charge (cm ³)	400

MOTOR

Approximate Power (CV)	3/8
Voltage/Frequency (V/Hz)	200V 50Hz
Voltage range (V)	170-242
Code	61.575
Type	CSIR
Phase number	1 PH
Locked rotor current (A)	16.0
Main W. resist. at 25°C (Ω)	4.59
Start W. resist. at 25°C (Ω)	16.52

APPLICATION

Application	High/Mid. back pressure
Refrigerant	R134a
Evaporating (°C)	-25 to 10
Expansion	Capillar/Valve
Comp. cooling	Fan cooled
Max. ambient temp. (°C)	43

NOMINAL PERFORMANCE	CYCLE C	CYCLE D
Cooling capacity (kcal/h)	768	920
Input power (W)	505	530
EER (kcal/Wh)	1.52	1.73
COP (W/W)	1.76	2.01
Current (A)	3.29	3.39

TEST CONDITIONS

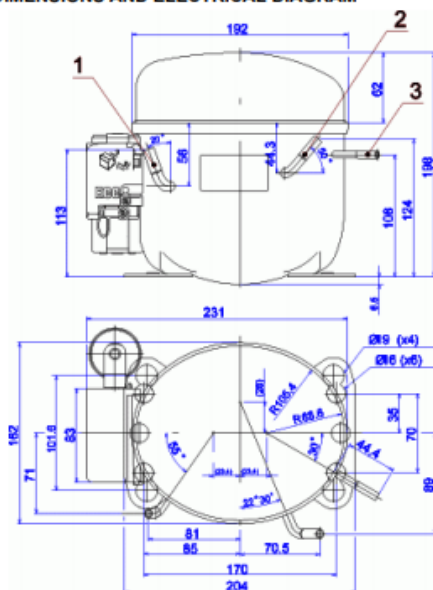
Evaporating temp. (°C)	5.0	7.2
Condensing temp. (°C)	55.0	55.0
Liq.t. entering expan. (°C)	55.0	46.0
Ambient t. and return (°C)	32.0	35.0
Tens/Freq (V/Hz)	200V 50Hz	200V 50Hz

ELECTRICAL COMPONENTS

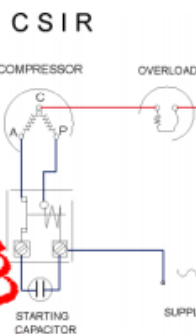
Relay	2014 149.
Pick-Up (A)	7.80


ELECTRICAL COMPONENTS

Relay	2014 149.
Pick-Up (A)	7.80
Drop-Out (A)	6.65
Protector	MRT20APK T0188
Current (A)	13.2 12.3
Time check (seg)	7.5-14 7.5-14
Disc temp. (Open/Close) (°C)	105.0 / 61.0 115.0 / 61.0
Starting capacitor (μF/M/FM)	47- 56 / 330

DIMENSIONS AND ELECTRICAL DIAGRAM


DESIGNATION	INTERNAL DIAM. (MM)
1 Suction/Service	8.1
2 Service/Suction	8.1
3 Discharge	6.5



MBSM.PRO , Compressor, Electrolux-Zem
GL60AA R134A ,1/6 HP , 1PH , 220-240
V 50 Hz

Category: Solutions,Tester ok
written by Jamila | 3 October 2018



PictureS Mbsm Dot Pro : www.mbsm.pro

MBSM.PRO , Compressor, Electrolux-Zem GL60AA R134A ,1/6 HP , 1PH , 220-240 V 50 Hz



Picture5 Mbsm Dot Pro : www.mbsm.pro

- Puissance en cheval 1/6 CV
- Cylindrée 5.99 cm³
- 220-240 V 50 Hz
- Gaz R134a LBP
- Température d'utilisation max. 32°C
- Avec boîtier et système de démarrage

La photo montre l'aspect du compresseur, pas son étiquette réelle

Codes fabricants

- ACC-GL60AA
- ACC-GL60AB
- ACC-GL60AH
- CUBIGEL-GL60AA
- CUBIGEL-GL60AB
- CUBIGEL-GL60AH
- MONDIAL ELITE-4106004
- MONDIAL ELITE-1147031
- Embraco Aspera- B1112Z





PictureS Mbsm Dot Pro : www.mbsm.pro



PictureS Mbsm Dot Pro : www.mbsm.pro

Mbsm_dot_pro_private_PDF_GL60AATélécharger
Mbsm_dot_pro_private_PDF_-GL60AATélécharger

590689

GL60AA 99H271A

GL60AA

08283

03254

267799

THERMALLY 220 - 240 V~ 50 Hz PH1
PROTECTED

R134a



CE H



Type: Hermetic piston compressors Producer: ACC Series: HMBP

Model: GL60AA

General data

Refrigerant: R134a
Discharge element: C
Cooling: S
Maximum ambient temperature [°C]: 43

Compressor's data

Cylinder capacity [cm³]: 6
Displacement [m³/h]: 1
Weight [kg]: 9,1
Oil charge [cm³]: 265
Oil type: ISO VG 19 ESTER

Engine's data

Engine type: RSIR
Power [KM]: 1/6
Starting element: LST
Power supply: 220V 50Hz
Voltage range: 187-264
Locked rotor current [A]: 9,9
Running winding resistance (25°C) [Ω]: 15,6
Starting winding resistance (25°C) [Ω]: 21,31

Electrical data

Relays: 3003
Shielding element: MRA38028, T0508, AF18FU
Starting capacitor volume [μF]:

Connections

	milimeters	inches
Suction tube:	6,5	
Service tube:	6,5	
Discharge tube:	4,9	

**Mbsm.pro , Qb73c15gax5 ,R134a ,
Refrigeration Compressor ,1/4 Hp,
Panasonic compressor catalogue, QB
series , 1Ph , 220V 50Hz**

Category: Solutions, Tester ok
written by Jamila | 3 October 2018



PictureS Mbsm Dot Pro : www.mbsm.pro

Mbsm.pro , Qb73c15gax5 ,R134a , Refrigeration Compressor ,1/4 Hp, Panasonic compressor catalogue, QB series , 1Ph , 220V 50Hz

Rated voltage / Frequency	Model	ASHRAE								Voltage range
		50Hz				60Hz				
		Capacity		COP - WW		Capacity		COP - WW		
		W	kcal/hr	RSIR	RSCR	W	kcal/hr	RSIR	RSCR	
220V 50Hz/60Hz	QB51C99GAX0	128	110	1.14	-	157	135	1.17	-	170V-250V 50Hz 187V-242V 60Hz
	QB57C11GAX0	146	126	1.18	-	175	151	1.22	-	
	QB66C16GAX0	165	142	1.20	-	200	172	1.27	-	
	QB77C18GAX0	202	174	1.21	-	224	193	1.27	-	
	QB91C24GAX0	236	203	1.19	-	255	219	1.22	-	
220V 50Hz	QB66C13GAX5	165	142	1.19	-					170V-250V
	QB73C15GAX5	185	159	1.19	-					
	QB77C16GAX5	202	174	1.22	-					
	QB91C19GAX5	236	203	1.25	-					



Rated voltage / Frequency	Model	ASHRAE								Voltage range
		50Hz				60Hz				
		Capacity		COP - WW		Capacity		COP - WW		
		W	kcal/hr	CSIR	RSCR	W	kcal/hr	CSIR	RSCR	
220V 50z/60Hz	QB110C25CAX0	273	235	1.18	-	279	240	1.19	-	170V-250V 50Hz 198V-242V 60Hz

PictureS Mbsm Dot Pro : www.mbsm.pro



PictureS Mbsm Dot Pro : www.mbsm.pro

Performance DATA

Application & Refrigerant LBP R134a

Voltage	Model	Displacement cm ³	*2) Capacity (W)					*3) C.O.P.		*4) Motor type	Compressor cooling *5)			Net weight kg		Oil charge cm ³	
			Evaporating temperature					NO	YES		ST	OC	FC	ST/FC	OC	ST/FC	OC
			-30°C	-25°C	-23.3°C	-20°C	-15°C										
*6) 100V 50/60Hz	QB57C88RA00	5.65	118	161	178	213	271	1.27	1.33	RSIR/RSCR	O	-	O	9.1	-	250	-
	QB66C12CA00	6.55	119	164	185	219	293	1.19	-	CSIR	-	-	O	8.8	-	250	-
	QB66C13RA00	6.55	133	182	200	239	304	1.28	1.37	RSIR/RSCR	O	-	O	9.4	-	280	-
	QB86C18TA00	8.56	170	226	248	295	376	-	1.35	CSCR	-	-	O	9.9	-	280	-
	QB91C18CA00	9.07	163	226	251	303	394	-	1.21	CSIR	-	-	O	9.6	-	250	-
220V 50Hz	QB66C13GAX5	6.55	108	149	165	200	263	1.23	-	RSIR	O	-	-	9.2	-	250	-
	QB73C15GAX5	7.27	121	167	185	224	294	1.23	-	RSIR	O	O	-	9.7	9.9	250	300
	QB77C16GAX5	7.69	131	182	202	245	319	1.26	-	RSIR	O	O	-	9.8	10.0	250	300
	QB86C18GAX5	8.56	145	200	222	268	347	1.26	-	RSIR	O	O	O	9.9	10.1	250	300
	QB91C19GAX5	9.07	154	213	236	285	372	1.29	-	RSIR	O	O	O	10.2	10.5	250	300
	QB110C25GAX5	10.86	176	246	273	331	432	1.18	-	RSIR	-	O	O	10.4	10.6	250	300
*4) 220-240V 50Hz	QB51C74GAW5	5.10	84	116	128	153	196	1.21	-	RSIR	O	-	-	8.7	-	250	-
	QB57C87GAW5	5.65	97	132	146	175	225	1.23	-	RSIR	O	-	-	8.9	-	250	-
	QB66C97GAW5	6.55	108	149	165	200	263	1.25	-	RSIR	O	O	-	9.2	-	250	-
	QB73C12GAW5	7.27	121	167	185	224	294	1.26	-	RSIR	O	O	-	9.7	-	250	-
	QB77C13GAW5	7.69	131	182	202	245	319	1.27	-	RSIR	O	O	-	9.8	-	250	-
	QB86C13GAW5	8.56	145	200	222	268	347	1.27	-	RSIR	O	O	O	9.9	-	250	-
	QB91C16GAW5	9.07	154	213	236	285	372	1.28	-	RSIR	O	O	O	10.0	-	250	-



PictureS Mbsm Dot Pro : www.mbsm.pro

Mbsm.pro , Fn77q17g , 1/4Hp , Electrostar , R12 Refrigerator Compressors , 220V/50-60Hz , 1Ph ,for Refrigerator/Freezer

Category: Solutions,Tester ok
written by Jamila | 3 October 2018



PictureS Mbsm Dot Pro : www.mbsm.pro

Mbsm.pro , Fn77q17g , 1/4Hp , Electrostar , R12 Refrigerator Compressors ,
220V/50-60Hz , 1Ph ,for Refrigerator/Freezer



PictureS Mbsm Dot Pro : www.mbsm.pro

- 1) SO60LKAA OR equivalent in 1/10 HP
- 2) FN43Q88G OR equivalent in 1/8 HP
- 3) FN51Q10G OR equivalent in 1/6 HP
- 4) FN57Q12G OR equivalent in 1/5 HP
- 5) FN66Q14G OR equivalent in 1/5 HP Powerful
- 6) **FN77Q17G** OR equivalent in 1/4 HP
- 7) FN91Q20G OR equivalent in 1/4 HP Powerful
- 8) FN110Q24G OR equivalent in 1/3 HP



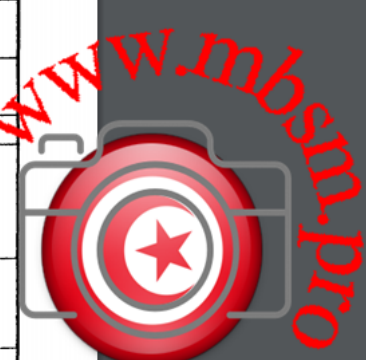
PictureS Mbsm Dot Pro : www.mbsm.pro

Compressor tests - Calorimeter

Type		FN77Q17G 1)	QA77C17GAX5	QA91C22GAX5
Parameter				
Evaporation temp.	[°C]	LBP -23,3	LBP -25 2) -23,3	LBP -25 -23,3
Refrigerant		R12	R134a	R134a
Q ₀				
CECOMAF	[W]		116,7	135
ASHRAE	[W]	191	154,2	187,1
ASHRAE	[kcal/h]	165	132,6	161
P ₁				
CECOMAF	[W]		144,1	166,4
ASHRAE	[W]	180	148,4	171,4
COP				
CECOMAF	[W/W]		0,81	0,81
ASHRAE	[W/W]	1,06	1,04	1,09
Start test				
cold tw = 32 °C		-	o.k	o.k
warm tw = 100 °C		-	o.k	o.k

1) Leaflet data, original compressor

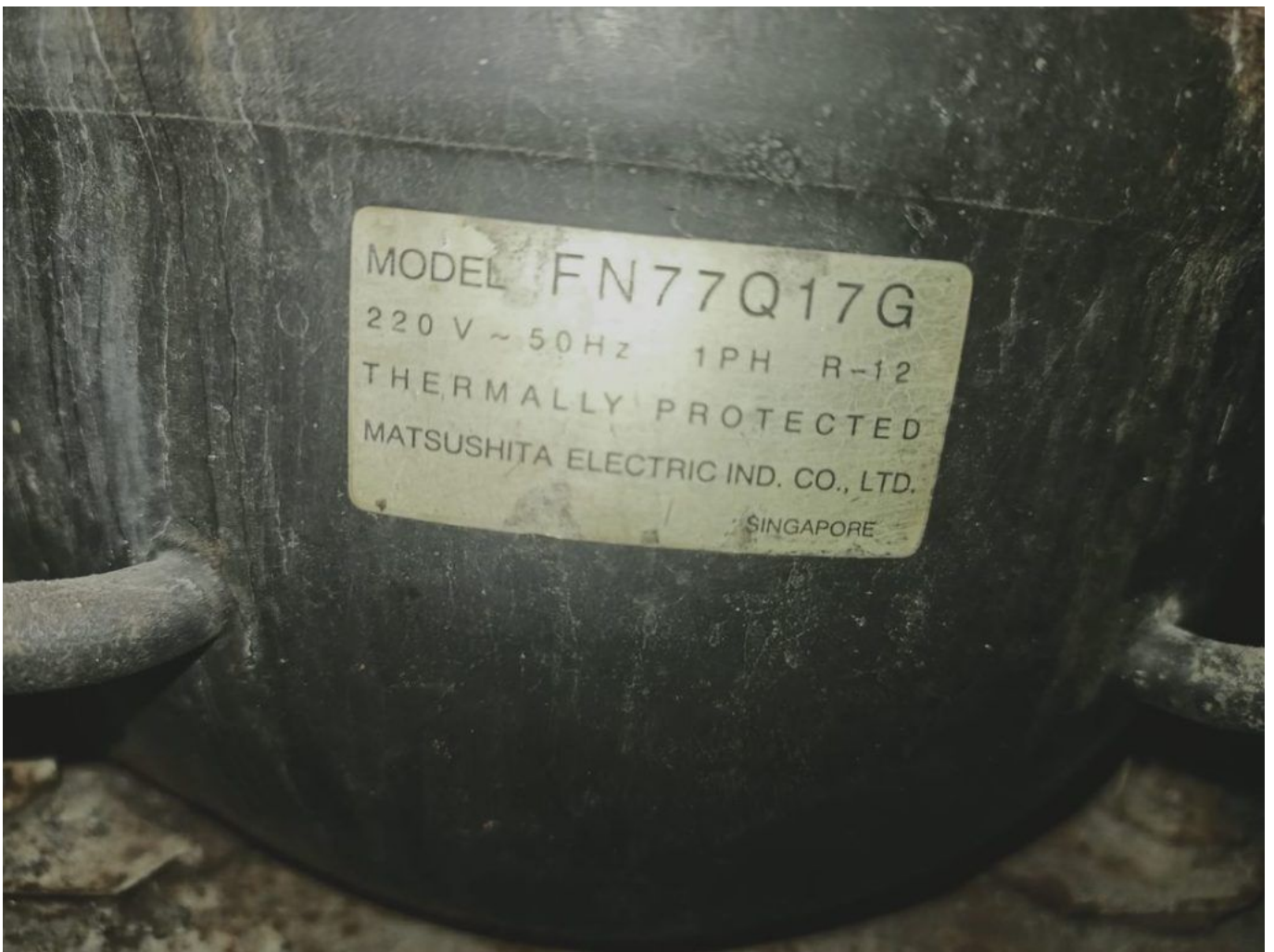
2) average two compressors, measuring



- 1) S060LKAA OR equivalent in 1/10 HP
- 2) FN43Q88G OR equivalent in 1/8 HP
- 3) FN51Q10G OR equivalent in 1/6 HP
- 4) FN57Q12G OR equivalent in 1/5 HP
- 5) FN66Q14G OR equivalent in 1/5 HP Powerful
- 6) FN77Q17G OR equivalent in 1/4 HP
- 7) FN91Q20G OR equivalent in 1/4 HP Powerful
- 8) FN110Q24G OR equivalent in 1/3 HP



MODEL FN77Q17G
220V ~ 50Hz 1PH R-12
THERMALLY PROTECTED
MATSUSHITA ELECTRIC IND. CO., LTD.
SINGAPORE



MODEL FN77Q17G
220 V ~ 50Hz 1PH R-12
THERMALLY PROTECTED
MATSUSHITA ELECTRIC IND. CO., LTD.
SINGAPORE

Mbsm.pro , Jx58lhs5-k , DAEWOO COMPRESSOR , FOR REFRIGERATOR , 1/5 Hp , 220/240 V , R134A

Category: Solutions, Tester ok
written by Jamila | 3 October 2018



PictureS Mbsm Dot Pro : www.mbsm.pro

Mbsm.pro , Jx58lhs5-k , DAEWOO COMPRESSOR , FOR REFRIGERATOR , 1/5 Hp , 220/240 V , R134A



< > 🔍 ✕ 3

jx58lhs5



JX58LHS5-K

fx

O	N	M	L	K	A	
	290	R134a	LBP		HPL25YE-5-K	78
	290	R134a	LBP		HPL25YE-5-L	79
						80
						81
						82
					MODEL	83
	كمية الزيت	الفريون	التطبيق	W 7.2+		84
	290	R134a	LBP		HKL27YE-5	85
	290	R134a	LBP		HPL27YE-5	86
	290	R134a	LBP		HPL27YE-5-K	87
	290	R134a	LBP		HSL27YE-5A	88
	290	R134a	LBP		HKL30YE-5	89
	290	R134a	LBP		HPL30YE-5	90
	290	R134a	LBP		HPL30YE-5-K	91
	290	R134a	LBP		HSL30YE-5	92
	290	R134a	LBP		DH70LHP5	93
	290	R134a	LBP		DH80LHP5	94
	290	R134a	LBP		DH90LHK5	95
	290	R134a	LBP		DH99LHP5	96
	290	R134a	LBP		DH90LHP5	97
	290	R134a	LBP		DH120LHG5	98
	290	R134a	LBP		DH126LHG5	99
	290	R134a	LBP		DM99LHK5	100
	230	R134a	LBP		JX41LHP5-K	101
	230	R134a	LBP		JX41LHS5	102
	230	R134a	LBP		JX46LHS5	103
	230	R134a	LBP		JX51LHS5-K	104
	230	R134a	LBP		JX51LHS5	105
	230	R134a	LBP		JX51LHT5	106
	230	R134a	LBP		JX55LHP5-K	107
	230	R134a	LBP		JX55LHS5-K	108
	230	R134a	LBP		JX58LHK5	109
	230	R134a	LBP		JX58LHP5	110
	230	R134a	LBP		JX58LHP5-K	111
	230	R134a	LBP		JX58LHS5	112
	230	R134a	LBP		JX58LHS5-K	113
	230	R134a	LBP		JX58LHS5A	114
						115
						116



كويجيل

هواي

دايو





Vue d'ensemble

Description rapide

Point d'origine: Gwangju, South Korea Marque nom: daewoo Numéro de Type: Jx58lhs5-k
Type: Compresseur frigorifique Application: Pièces de réfrigération Certification: CE
alternatif: compresseur

Capacité d'approvisionnement

Capacité d'approvis...30000 Piece/Pieces per Day

Emballage et livraison

Détails d'emballage Palettisation
Port Busan, Korea
Délai : ⌚: 4weeks



PictureS Mbsm Dot Pro : www.mbsm.pro

Specifications

DAEWOO COMPRESSOR FOR REFRIGERATOR

* R134a/lbp
-Origine: Corée

Nominale Tension [V-hz]	HP	Modèle	Moteur Type	Refroidissement Capacité [W]	Puissance Entrée [W]	COP [W/w]	Refroidissement Type
220/240-50	1/5	JX58LHS5-K	Rsir	163	145	1.12	ST
	1/4	HPL25YE-5-K	Rscr	203	171	1.19	ST
	1/3	HPL30YE-5-K	Rscr	257	207	1.24	ST



- * Réduit la température du moteur
- * Mise à jour pompe fiabilité
- * Réduction de Bruit Niveau
- * Amélioration de la capacité de protection

PictureS Mbsm Dot Pro : www.mbsm.pro

Description rapide

Point d'origine:
Gwangju, South Korea

Marque nom:
daewoo

Numéro de Type:
Jx58lhs5-k

Type:
Compresseur frigorifique

Application:
Pièces de réfrigération

Certification:

CE

alternatif:
compresseur

Capacité d'approvisionnement

Capacité d'approvisionnement:
30000 Piece/Pieces per Day

Emballage et livraison

Détails d'emballage
Palettisation

Port
Busan, Korea

Délai : :
4weeks

Specifications

DAEWOO COMPRESSOR FOR REFRIGERATOR

* R134a/lbp

-Origine: Corée

Nominale Tension [V-hz]	HP	Modèle	Moteur Type	Refroidissement Capacité [W]	Puissance Entrée [W]	COP [W/w]	Refroidissement Type
220/240-50	1/5	JX58LHS5-K	Rsir	163	145	1.12	ST
	1/4	HPL25YE-5-K	Rscr	203	171	1.19	ST
	1/3	HPL30YE-5-K	Rscr	257	207	1.24	ST

- * Réduit la température du moteur
- * Mise à jour pompe fiabilité
- * Réduction de Bruit Niveau
- * Amélioration de la capacité de protection

Mbsm.pro, 1/5 HP ,170 w, SL23YE-5,
DAEWOO, HERMETIC COMPRESSOR ,Turkey
Refrigeration & Heat , R12

Category: Solutions,Tester ok
written by Jamila | 3 October 2018



PictureS Mbsm Dot Pro : www.mbsm.pro

Mbsm.pro, 1/5 HP , 170 w, SL23YE-5, DAEWOO, HERMETIC COMPRESSOR , Turkey Refrigeration & Heat , R12



SL23YE-5
AC 20 240V 50Hz
LRA 7.74
THERMALLY PROTECT
DPEWOO ELECTRONIC Co., Ltd.
MADE IN KOREA
9909021362



PictureS Mbsm Dot Pro : www.mbsm.pro

Product Details

Company Profile

Inquiry Records(4)

Our Company is since 1969. All Refrigerant parts Trade. All refrigerants products import export. Air Condition Compressor, Other parts, Freezer Room parts, insulation, valve, all refrigerant, in Turkey. . .

Basic Information

Business Type: Trading Company, Distributor/Wholesaler
Product/Service (We Sell): Refrigerant Parts, Air COnditioner, Copper, Heat Exhancer, Refrigerator, Condensing Unit, Condenser, Compressor
Number of Employees: 11 - 50 People

Trade & Market

Main Markets: Eastern Europe, Southeast Asia, Africa, Mid East, Eastern Asia, Western Europe

Factory Information

Factory Location: Keresteci Recep Sk. No.10



PictureS Mbsm Dot Pro : www.mbsm.pro

Product Details

Company Profile

Inquiry Records(4)

Item specifics

Place of Origin: Seoul South Korea

JX51LHS5: 1/6 - ST

Port: ISTANBUL

HSL21YE-5-C: 1/5 - OC

HGH25YE-5: 1/4 - ST

HGH23YE-5: 1/5 - ST

HSL25YE-5-C: 1/4 - OC

Certification: CE

DM99HHG5: 3/8 - ST

Type: Refrigeration Compressor

Application: Refrigeration Parts



PictureS Mbsm Dot Pro : www.mbsm.pro

Ohter 134A

FREON R134A GASES.

220V - 50~60HZ

LBP and HBP Application

MODEL	CC/REV	(W)	(Kcal)
JX51LHS5	5,1	129	111
HSL21YE-5-C	6,7	176	151
HSL25YE-5-C	7,7	198	170
HGH23YE-5	7,0	659	567
HGH25YE-5	7,7	803	691
DM99HHG5	9,9	1093	940



PictureS Mbsm Dot Pro : www.mbsm.pro

Mbsm.pro , Compresseur frigorifique,

Embraco Aspera ,T2178GK , 1Hp ,PIÈCES FRIGO, 404A , 220-240 V 50 Hz

Category: Solutions,Tester ok
written by Jamila | 3 October 2018



PictureS Mbsm Dot Pro : www.mbsm.pro

Mbsm.pro , Compresseur frigorifique, Embraco Aspera ,T2178GK , 1Hp ,PIÈCES FRIGO, 404A , 220-240 V 50 Hz



Select text



GAS R-404A / R-404A GAS



- Compresor hermético / Hermetic compressor
 - Monofásico / Single-phase
 - Voltaje / Voltage: 220V - 50 Hz

- Serie J, equipados con
 with case and valve

BAJA TEMPERATURA / LOW TEMPERATURE

Código Code	Modelos Models	HP HP	cm ³ cm ³	Temperatura de evaporación	
				-25°C	W
14341	NE2125GK	1/3	8.78	300	
20792	NE2134GK	3/8	12.12	420	
20793	T2155GK	1/2	14.50	520	
20796	T2168GK	5/8	17.40	680	
21086	T2178GK	1	20.40	830	
21082	NJ2192GK	3/4	26.20	1020	
20850	NJ2212GK	1 1/4	34.37	1330	

ALTA TEMPERATURA / HIGH TEMPERATURE

Código Code	Modelos Models	HP HP	cm ³ cm ³	Temperatura de evaporación	
				-10°C	-5°C
				W	W
21069	NB6144GK	1/5	4.52	300	380
21070	NB6152GK	1/5	5.02	350	440
36596	NB6165GK	1/4	6.05	430	530
21075	NE9213GK	1/2	12.12	860	1080
20762	T6217GK	5/8	14.50	960	
36557	T6220GK	3/4	17.40	1160	
21076	NJ9226GK	1	21.70	1580	



Mbsm_dot_pro_private_PDF_compresseur-embraco-aspera-t2478gkTélécharger



Private Picture Copyright : WWW.MBSM.PRO

Détails techniques

puissance 1 HP – cylindrée 20,40 cc

220/240V 50HZ

ASPERA

FRIULINOX

Friulinox Armoire réfrigérée AF12 -20, AF12 PA, AF12-14, AF12-14 VTR, AF12-14 VTRP, AF14, AF14 -22 SILVER VTR, AF6-1, AF6-7, AF6-7 VTR, AF7, AF7 -20 VTR, AF7 -22 SILVER VTR, AF7 ICE, AF7 VTR, AF7-14, AG60 GOLD, AG60 H20, AG60 SILVER, AG60 SILVERP, AG60P, AL-EN SUPER, AL-EN1, AL-EN1 SUPER, AL-EN1P, AL-EN2, AL-EN2 SUPER, AL-ENP, AP12-14, AP14, AP6, AP6-12, AP6-7, AP7, AP7-14, AR12-14, AR12-14 VTR, AR14, AR6-12, AR6-12 VTR, AR6-7, AR6-7 VTR, AR7, AR7-14, AR7-14 VTR, AR-EN GOLD, AR-EN SILVER, AR-EN1, AR-EN1 GOLD, AR-EN1 VTR, AR-EN2, AR-ENP, ARF142, ARF212 VTR, ARP142, ARP-EN1, ARP-EN2, ARRF21 VTR, EN GOLD, EN P, EN SILVER, EN1,

EN1 GOLD, EN1 H2O, EN1 H2O SILVER, EN1 SILVER, EN1 VTR, EN2, EN2 H2O

FriulinoxCellulede refroidissement ARP122

FriulinoxVitrineréfrigérée AFP122, AFP142, ARF122

ZANUSSI

ZanussiArmoireréfrigérée ALF110 (110071), ALNF220 (110073), ALF110 (110074), ALF120 (110075), ALNF220 (110079), ADN111 (110757), AKP110 (111000), AKS110 (111001), AKP120 (111002), AKN110 (111009), AKN120 (111010), AKP110UK (111121), AKN110UK (111123), AKNF220 (111127), AKF110UK (111129), AKF110 (111137), AKF120 (111138), ASF110 (112030), ASF110 (112032), AZP2203 (113228), AZP220360 (113229), ALN2203 (113231), AZP13430 (113234), AZF2203 (113236), AZF13430 (113237), MRF601/86 (726059), ETZ601 (726165), ETZ602 (726166), ESQC41F (726171), ESQC41FR (726172), ESQF41F (726173), ETE601 (726178), ETE602 (726179), ETE601L (726184), ETZ601L (726185), RS13RX2F (726321), RS13FX2F (726323), RS13DX2F (726335), RS13PX2F (726459), RS13PX2F6 (726461), RS13P42F (726462), RS13FX42F (726464), RS13DFX2F (726465), RS13R32F (726467), SB1300X2F (726468), RS13PW2F (726475), RS13FW2F (726476), MRF601/86 (726500), RS13FX2F6 (726688), EKZ601 (726890), EKZ602 (726891), EKE601 (726939), EKE602 (726940), EKE601L (726949), EKZ601L (726950), RS13RX2FG (726967), RS13FX2FG (726968), RS13P42F (727128), RS13FX42F (727129), RS13RX4H (727157), RS13FX4H (727158), KLP1300R (728059), KLP1300F (728060), RS13PX2FD (728063), E06C0M1V (728077), E06C1M1V (728078), E06C0D1V (728081), C06FD1G (728173), FGD36 (728271), RH06RD1G (728408), C06FD1G (728415), RS05RD1G (728433), E05N0D1C (728457), E05C0D1C (728458), E06N0D1C (728465), E06N0D2C (728466), E06N0D1V (728467), E06C0D1C (728468), E06C0D2C (728469), E06C0D1V (728470), E06N0D1C (728522), E06C0D1C (728523), KLN1300R (728605), KLP1300R (728606), KEP1300R (728607), KLP1300R (728608), KLP1300F (728609), KEP1300F (728610), KLP1300F (728611), EMVN500 (730005), DVP500V11C (730677), DVP501V11C (730678), DVP600V11C (730683), DVP601V11C (730684), DVP602V11C (730685), DVP600V12C (730686), DVP601V12C (730687), DVP602V12C (730688), DVN600V11C (730701), DVN601V11C (730702), DVN602V11C (730703), DVN600V12C (730704), DVN601V12C (730705), DVN602V12C (730706), DVN500V11C (730721), DVN501V11C (730722), MVP600V11C (730725), MVP601V11C (730726), MVP602V11C (730727), MVP600V12C (730728), MVP601V12C (730729), MVN600V11C (730741), MVN601V11C (730742), MVN600V12C (730743), MVN601V12C (730744), DVP500V11C (730768), MVP501V11C (730769), MVP502V11C (730770), MVN500V11C (730780), MVN501V11C (730781), MLC601V11C (730938), MLC602V11C (730939), DVC500V11C (731242), DVC501V11C (731243), MVC502V11C (731244), DVC600 (731250), DVC601 (731251), MVC602 (731252), DVC600 (731255), DVC601 (731256), MVC600V11C (731282), MVC601V11C (731283), MVC600V12C (731284), MVC601V12C (731285), MVC500V11C (731294), MVC501V11C (731295), DVC602 (731302), DVC602 (731303), DVNN13022C (732073), DVNN13122C (732074), MVNN13022C (732079), MVNN13122C (732080), DVNC13022C (732095), EDVC13122C (732096), MVNC13022C (732103), MVNC13122C (732110), MLC600V11C (732251), MLC601V11C (732255), MLC602V11C (732257), DVP6VP12CC (734079), PDVN901V11C (737216), PDVN901V12C (737217), PDVN907V11C (737218), PDVN907V12C (737219), PDVC901V11C (737220), PDVN907V12C (737221), PDVC907V11C (737222), PDVC907V11C (737223), ILF120 (770508), RVPE061 (771100), RSPE061 (771101), RVPE062 (771102), RVNE061 (771108), RVNE062 (771109), KVPE662 (771115), RPPE061 (771155), ILF110 (771537), ZLNF220 (771539), RD13PX2F (790018), RD13FX2F (790019)

ZanussiCellulede refroidissement ESQC41F (691044), ESQC41FR (691045), ESQF41F (691046), ESQF41FR (691047), ESQF41FR (726144)

ZanussiCongélateurcoffre MRF4808660 (726042), MRF401/86 (726058), MRF240/86 (726060), MRF480/86 (726061)

ZanussiTableréfrigérée STRP1101 (113084), STRP1102 (113088), STRP1601 (113092), TRN224C (113102), TRN224D (113103), TRN224E (113104), STRP1602 (113105), STRP1603 (113106), STRP2201 (113107), STRP2202 (113108), STRP2203 (113109), STRP1101S (113128), STRP1601S (113129), STRP2201S (113130), STRP1602R (113131), TRN132A (113150), TRN132B (113151), TRN132C (113152), TRNA132A (113153), TRNA132B (113154), TRNA132C (113155), TRRN132A (113156), TRRN132B (113157), TRRN132C (113158), TRN183A (113159), TRN183B (113160), TRN183C (113161), TRN183D (113162), TRNA183A (113163), TRNA183B (113164), TRNA183C (113165), TRNA183D (113166), TRRN183A (113167), TRRN183B (113168), TRRN183C (113169), TRRN183D (113170), TRN224A (113171), TRN224B (113172), TRNA224A (113173), TRNA224B (113174), TRRN224A (113175), TRRN224B (113176), TRF132A (113177), TRFA132A (113178), TRRF132A (113179), TRF183A (113180), TRFA183A (113181), TRRF183A (113182), TRN132AE (113183), TRN183AE (113184), TRN224AE (113185), TRF132AE (113186), TRF183AE (113187), STRP1603R (113192), STRP2201R (113193), STRP2202R (113194), STRP2203R (113195), STRP1101R (113196), STRP1102R (113197), STRP1601R (113198), TCGS/1V7T (121856), TCGS/2V7T (121857), TCGS/1VC27 (121858), TCGS/2V2C7 (121859), TCGRS/1V7T (121866), TCGRS/2V7T (121867), TCGRS/1VC2 (121868), TCGRS/2V2 (121869), TCGS2VC27T (121905), RCSN2M2 (726139), RCSN2M12 (726140), RCSN3M3 (726141), RCSN3M22 (726145), RCSN3M14 (726146), RCSN4M4 (726147), RCSN4M32 (726148), RCSN4M24 (726170), RCSN2M2U (726182), RCSN3M3U (726188), RCSN4M4U (726197), RCDR4M24 (726199), RCDR4M16 (726200), RCDR4M08 (726201), RCSN2M2R (726202), RCSN2M12R (726203), RCSN3M3R (726210), RCSN3M22R (726211), RCSN3M14R (726212), RCSN4M4R (726213), RCSN4M32R (726220), RCSN4M24R (726221), RCDR2M20 (726408), RCDR2M12 (726409), RCDR2M20U (726410), RCDR2M12U (726411), RCDR2M04R (726412), RCDR3M22 (726413), RCDR3M0U (726414), RCDR3M22U (726415), RCDE4M40 (726416), RCDR4M32 (726417), RCDR4M40U (726418), RCDR4M32U (726419), RCDFM20UX (726421), RCDF3M30U (726422), RCER2M2 (726423), RCER3M3 (726424), RCER4M4 (726425), RCEF2M2X (726426), RCEF3M3 (726427), RCDR2M20 (726550), RCDR2M12 (726551), RCDR2M04 (726552), RCDR2M20U (726553), RCDR2M12U (726554), RCDR2M04U (726555), RCDR2M20R (726556), RCDR2M12R (726557), RCDR2M04R (726558), RCDR3M30 (726559), RCDR3M22 (726560), RCDR3M14 (726561), RCDR3M06 (726562), RCDR3M0U (726563), RCDR3M22U (726564), RCDR3M14U (726565), RCDR3M06U (726566), RCDR3M30R (726567), RCDR3M22R (726568), RCDR3M14R (726569), RCDR3M06R (726570), RCDR4M40 (726571), RCDR4M32 (726572), RCDR4M40U (726573), RCDR4M32U (726574), RCDR4M40R (726575), RCDR4M32R (726576), RCDF2M20 (726577), RCDFM20U (726578), RCDF2M20R (726579), RCDF3M30 (726580), RCDF3M30U (726581), RCDF3M30R (726582), RCSER2M2 (726583), RCSER3M3 (726584), RCSER4M4 (726585), RCEF2M2 (726586), RCEF3M3 (726587), RCSN2M2T (726668), RCSN3M3T (726669), RCSN4M4T (726670), RCSER2M2U (726682), RCSER3M3U (726683), RCER4M4U (726684), RCEF2M2U (726685), RCEF3M3U (726686), RCSF2M24 (727009), RCSF3M34 (727010), HB2PNTR (727108), HB3PNTR (727109), HB4PNTR (727110), HB2P (728086), HB1P2C12 (728139), HB1P3C (728157), HB4C (728158), HB3P (728207), HB2P2C (728235), EDON590124 (728238), EDON590116 (728239), EDON590108 (728240), HB1P4C (728241), HB6C (728242), HB4P (728243), HB3P2C (728244), HB2P4C (728245), HB8C (728246), HB2PR (728247), HB1P2CR (728248), HB1P3CR (728254), HB4CR (728259), HB3PR (728264), HB2P2CR (728294), HB1P4CR (728295), HB6CR (728296), HB4PR (728297), HB3P2CR (728298), HB2P4CR (728299), HB8CR (728300), HB1P2C (728302), RCHBF1P2C (728304), RCHBF2P2C (728305), S02P200I (728352), S02P120I (728353), S04P300I (728354),

S04P220I (728361), S04P140I (728362), S05P400I (728363), S05P320I (728364),
E29N200I (728368), E29N120I (728369), E29N040I (728370), E29N200IA (728371),
E29N120IA (728372), E29N040IA (728373), E29N200R (728374), E29N120R (728375),
E29N040R (728376), E44N300I (728377), E44N220I (728378), E44N140I (728379),
E44N060I (728380), E44N300IA (728381), E44N220IA (728382), E44N140IA (728383),
E44N060IA (728384), E44N300R (728385), E44N220R (728386), E44N140R (728387),
E44N060R (728388), E59N400I (728389), E59N320I (728390), E59N400IA (728391),
E59N320IA (728392), E59N400R (728393), E59N310R (728394), E29C200I (728395),
E29C200IA (728396), E29C200R (728397), E44C300I (728398), E44C300IA (728399),
E44C300R (728400), S05P240I (728401), ED0N2912SE (728492), ED0N4413SE (728493),
ED0N5914SE (728494), EDOC2912SE (728495), EDOC4413SE (728496), HB2PU (728509),
HB3PU (728510), HB4PU (728511), RCSF2M2 (728512), RCSF3M3 (728517), RCSF2M12
(728518), RCSF3M22 (728519), S04P220R (728536), S04P140R (728537), S05P400R
(728538), S05P320R (728539), S05P240R (728540), HB1P2CRN (728552), HB1P3CRN
(728554), HB4CRN (728556), HB2P2CRN (728558), HB1P4CRN (728560), HB6CRN
(728562), HB3P2CRN (728564), HB2P4CRN (728566), HB8CRN (728568), HBF2PN
(728569), HBF1P2CN (728570), HBF3PN (728571), RCHBF2P2CN (728573), S02P200IA
(728585), S04P300IA (728586), S05P400IA (728587), S02P200R (728588), S02P120R
(728589), S04P300R (728590), RCHBF2P (728635), RCHBF3P (728636)

...et d'autres dispositifs

– ALPENINOX

T2178GK – ASPERA

01AS0970 – ATEL – ELECTROLUX PROFESSIONAL

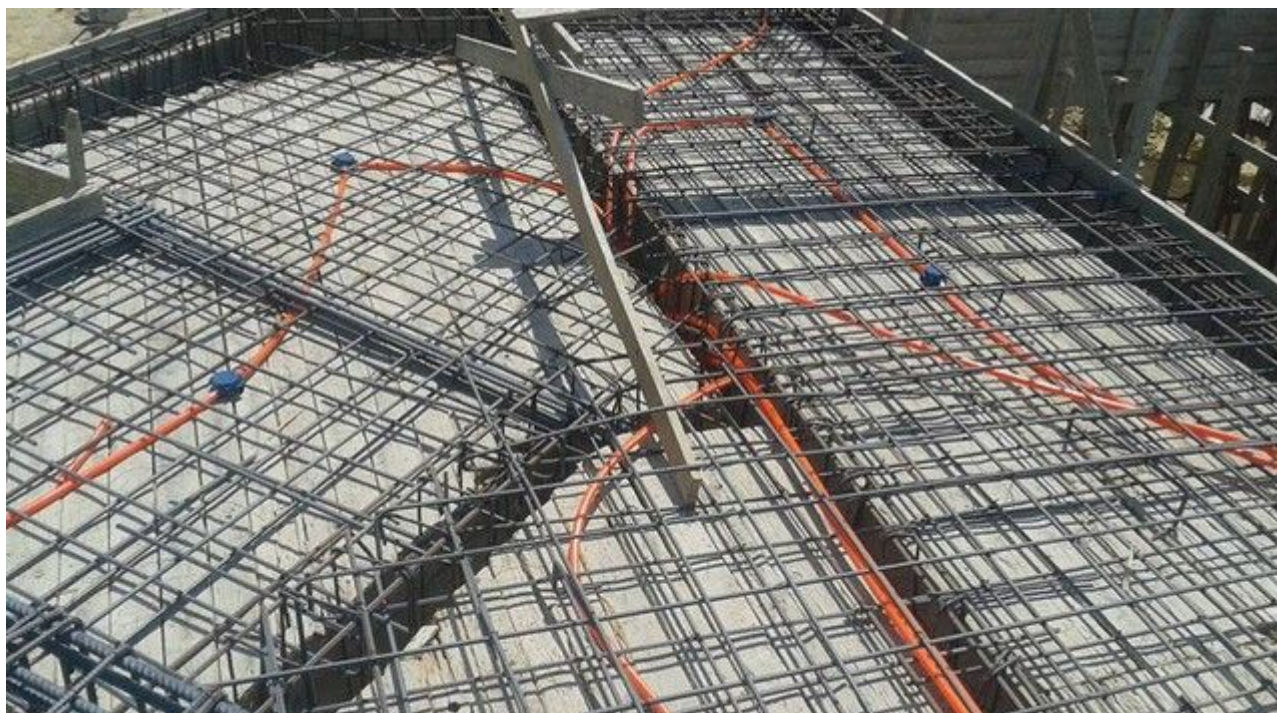
T2178GK – EMBRACO – FRIULINOX – INDESIT – UNIVERBAR – WHIRLPOOL – ZANUSSI

...numéros de fabricant supplémentaires possibles

Mbsm.pro, The risk of extending the electric hoses under the reinforcing steel for ceilings

Category: Pictures

written by Jamila | 3 October 2018



PictureS Mbsm Dot Pro : www.mbsm.pro

Mbsm.pro, The risk of extending the electric hoses under the reinforcing steel for ceilings

**Mbsm.pro, COMPRESOR DANFOSS ,FR7.5B
,1/5 Hp , R-12 ,freezer ,capillary
260 cm , 0.31**

Category: Solutions, Tester ok
written by Jamila | 3 October 2018



PictureS Mbsm Dot Pro : www.mbsm.pro

Mbsm.pro, COMPRESOR DANFOSS ,FR7.5B ,1/5 Hp , R-12 ,freezer ,capillary 260 cm ,
0.31

Mbsm.pro , COMPRESSEUR , SC18CLX.2 , DANFOSS SECOP, R404A/R507, 5/8HP , 1PH , Deep Freeze Comptoire, Alimentation 220-240 V 50 Hz

Category: Solutions, Tester ok
written by Jamila | 3 October 2018



PictureS Mbsm Dot Pro : www.mbsm.pro

Mbsm.pro , COMPRESSEUR , SC18CLX.2 , DANFOSS SECOP, R404A/R507, 5/8HP , 1PH , Deep Freeze Comptoire, Alimentation 220-240 V 50 Hz