

# Compressor, TEE, TURK ELEKTRIK , R600a, MTS200MT, MTS170MT, MTS185MT

Category: compressor

written by [www.mbsm.pro](http://www.mbsm.pro) | 12 April 2021



Private Picture Copyright : [WWW.MBSM.PRO](http://WWW.MBSM.PRO)

Compressor, TEE, TURK ELEKTRIK , R600a, MTS200MT, MTS170MT, MTS185MT

no frost, egl99aa zmc refrigerator, DF40, silver, ideal, zanussi, IDEAL ZANUSSI, EGL99AA ZMC, DF 40 Elgance, Compressor, ACC Cubigel, Huayi, Electrolux, ZEM GL99AA, GL99AA, LBP , R134a, 220-240V/1/50Hz, 1/4 HP, discharge 9.93 cm<sup>3</sup>, motor type RSIR,

# LRA 14.4A

Category: compressor

written by [www.mbsm.pro](http://www.mbsm.pro) | 12 April 2021



Private Picture Copyright : [WWW.MBSM.PRO](http://WWW.MBSM.PRO)



[Mbsm\\_dot\\_pro\\_private\\_PDF\\_GL99AA-compresseur-acc-cubigell-gl99aaTélécharger](#)

[Mbsm\\_dot\\_pro\\_private\\_PDF\\_GL99AATélécharger](#)

Compressor ACC Cubigel Huayi Electrolux ZEM GL99AA, LBP – R134a, 220-240V/1/50Hz, 1/4 HP, discharge 9.93 cm<sup>3</sup>, motor type RSIR, LRA 14.4A, expansion device: capillary, cooling: static, weight 11 kg, the statutory warranty period shall apply (24 months), Delivery time Info: with “immediately available” and “scarce stock”, usually delivery within 2 days. For “currently not available” delivery time usually 2 weeks or delivery time in urgent cases contact us.

---

Refrigerant:	R134a
Power range(W):	101 – 200 W
Performance range (C):	-35 C to -10 C
Connecting size:	4,9 mm
Suction:	6,5 mm
Working area:	LBP
Design type:	Hermetic
Model series:	GL
Use with:	Capillary
Power range(HP):	0-2
Power supply:	230 V
Oil type:	ISO VG 22 Ester
Engine type:	RSIR
Article condition:	New
Info:	Oil filled
Shipping weight:	13,00 Kg

Dimensions ( length × width × height ):	23,10 × 16,20 × 18,60 cm
Cooling capacity condition:	T0 -25 C, Tk +55 C
Manufacturer:	ACC Cubigel Huayi Electrolux ZEM
Model:	GL99AA
Stroke volume (cm3):	9,93
Cooling capacity (W):	174
Power (HP):	0,25
Max. Starting current (A):	14,4
Max. Operating current (A):	1,31
Engine type:	RSIR
COP:	0,92
Note:	Static cooling
Conveying and suction volume (m3):	1,72
Oil quantity (l):	0,295
Compressor type:	Piston
Cooling:	Static
RPM:	2900
Power range:	-35 C to -10 C
Alternative:	HLY90AA, NL11F
Pressure line (mm):	4,9
Suction line (mm):	6,5

**ZMC** C **GL99AA** 0326  
220-240V~50Hz  
R 134a  
MADE IN EGYPT  
CE  
482  
55-3975 6

**GL99AAa VE09**  
**220-240V 50Hz ~1**

**COMPRESSOR**

Displacement (cm <sup>3</sup> )	9.95
Diameter (mm)	25.4
Stroke (mm)	19.62
Net Weight (Kg)	9.6
Oil type	ISO VG 22 ESTER
Oil charge (cm <sup>3</sup> )	295

**MOTOR**

Approximate Power (CV)	1/4
Voltage/Frequency (V/Hz)	220V 50Hz
Voltage range (V)	187-264
Code	-
Type	RSIR
Phase number	1 PH
Locked rotor current (A)	14.0
Main W. resist. at 25°C (Ω)	9.96
Start W. resist. at 25°C (Ω)	20.39

**ELECTRICAL COMPONENTS**

Relay	PTC 3003 - K100		
Nominal voltage (V)	200 - 240		
Resistance μ	14,00		
Protector	MRP336JZ	T0377	AE11FU

**APPLICATION**

Application	Low back pressure
Refrigerant	R134a
Evaporating (°C)	-35 to -10
Expansion	Capillar
Comp. cooling	Static
Max. ambient temp. (°C)	43

**NOMINAL PERFORMANCE**

	CYCLE A	CYCLE B
Cooling capacity (W)	175	238
Input power (W)	189	200
EER (kcal/Wh)	0.79	1.02
COP (W/W)	0.92	1.19
Current (A)	1.31	1.34

**TEST CONDITIONS**

	CYCLE A	CYCLE B
Evaporating temp. (°C)	-25.0	-23.3
Condensing temp. (°C)	55.0	55.0
Liq.t. entering expan. (°C)	55.0	32.0
Ambient t. and return (°C)	32.0	32.0
Tens/Freq (V/Hz)	220V 50Hz	220V 50Hz



موديل : KGT1

الشركة العالمية لصناعة الأجهزة المنزلية - الاسكندرية

١,٢ امبير

١٩٥ وات

٥٠ هيرتز

٢٢٠ فولت ~

السعة : ١,٣ اقدم

درجة الحماية : IPX2

التصنيف : ST

الشحنة : ١٧٠ جم ف ١٣٤ ا

سنة الانتاج

No.

٢٠٠٥/٣٢٠

صنع في مصر

200

3 2

٢٠٠٥/٣٢٠

Made in Egypt



Private Picture Copyright : WWW.MBSM.PRO



REDMI NOTE 9 PRO  
AI QUAD CAMERA

Private Picture Copyright : WWW.MBSM.PRO



REDMI NOTE 9 PRO  
AI QUAD CAMERA

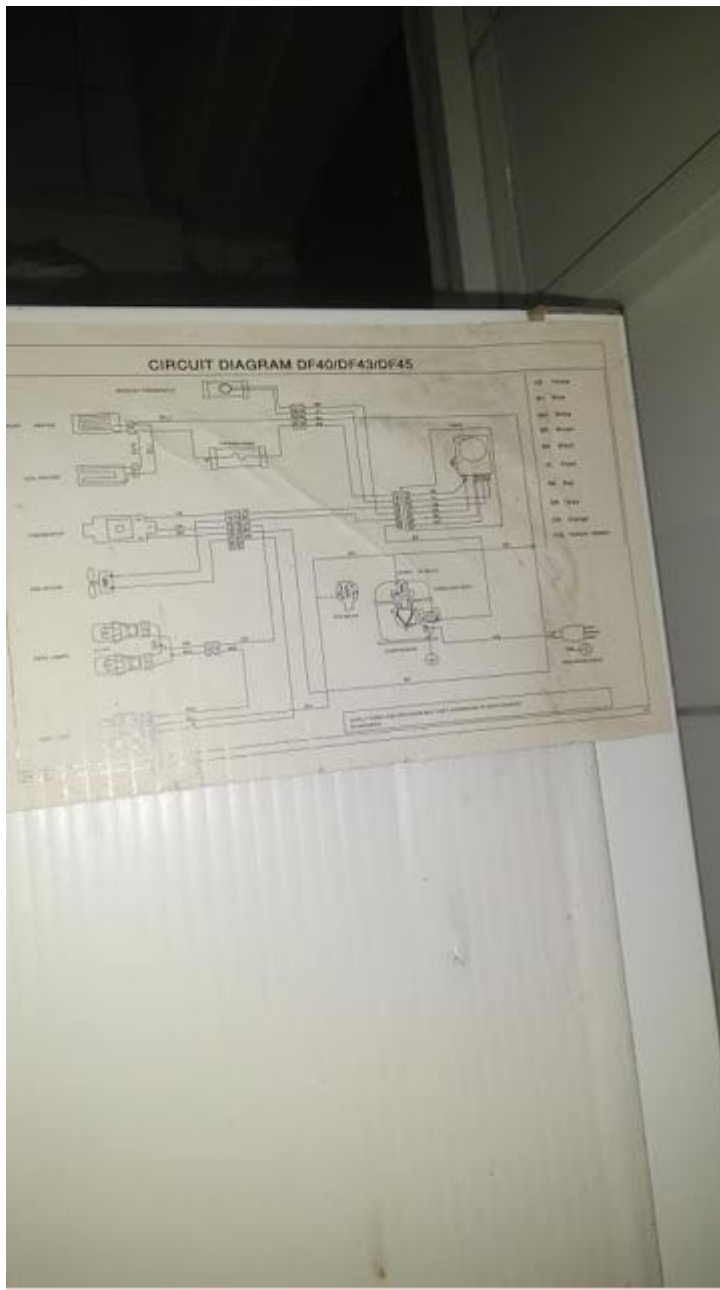
Private Picture Copyright : WWW.MBSM.PRO



Picture Copyright : [WWW.MBSM.PRO](http://WWW.MBSM.PRO)



Private Picture Copyright : [WWW.MBSM.PRO](http://WWW.MBSM.PRO)



Private Picture Copyright : [WWW.MBSM.PRO](http://WWW.MBSM.PRO)

**ZMC**

**EGL99AA 1002**

220-240V~50Hz

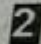
**R 134 a**

MADE IN EGYPT



3

480

0250659 



Private Picture Copyright : [WWW.MBSM.PRO](http://WWW.MBSM.PRO)

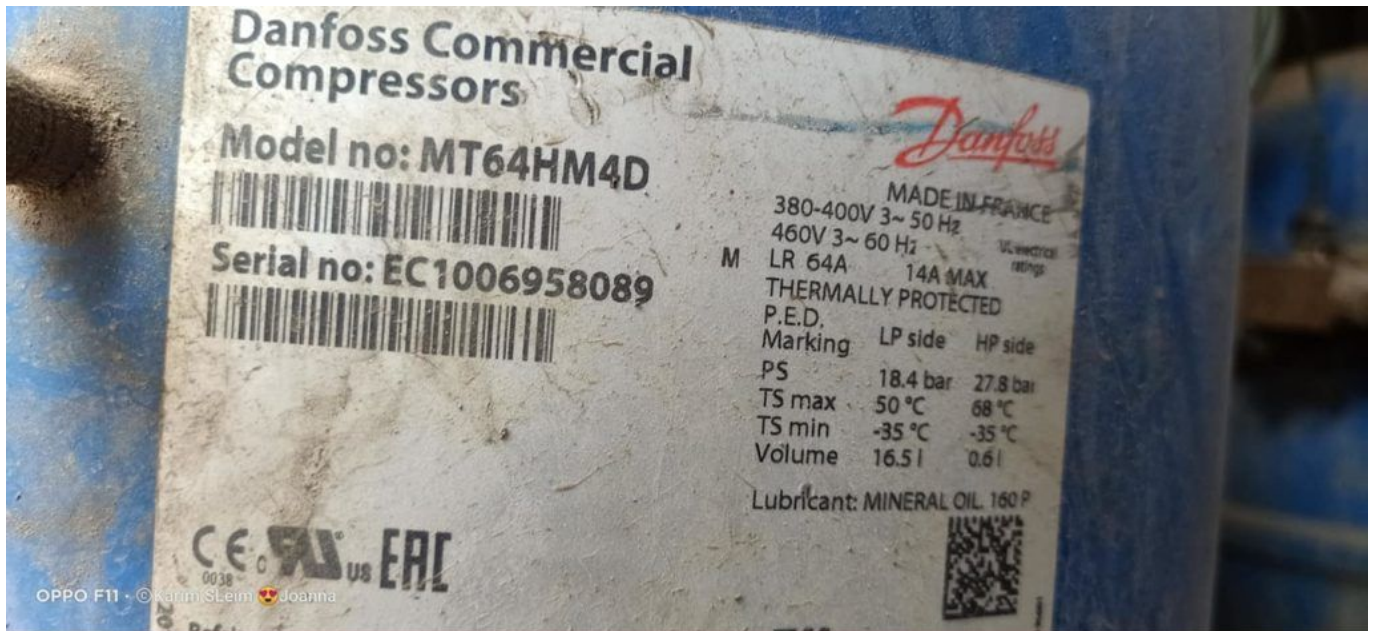
## Danfoss, Compressor, 5 Hp, R22, Démontage, ouverture, DESTRUCTION

Category: compressor

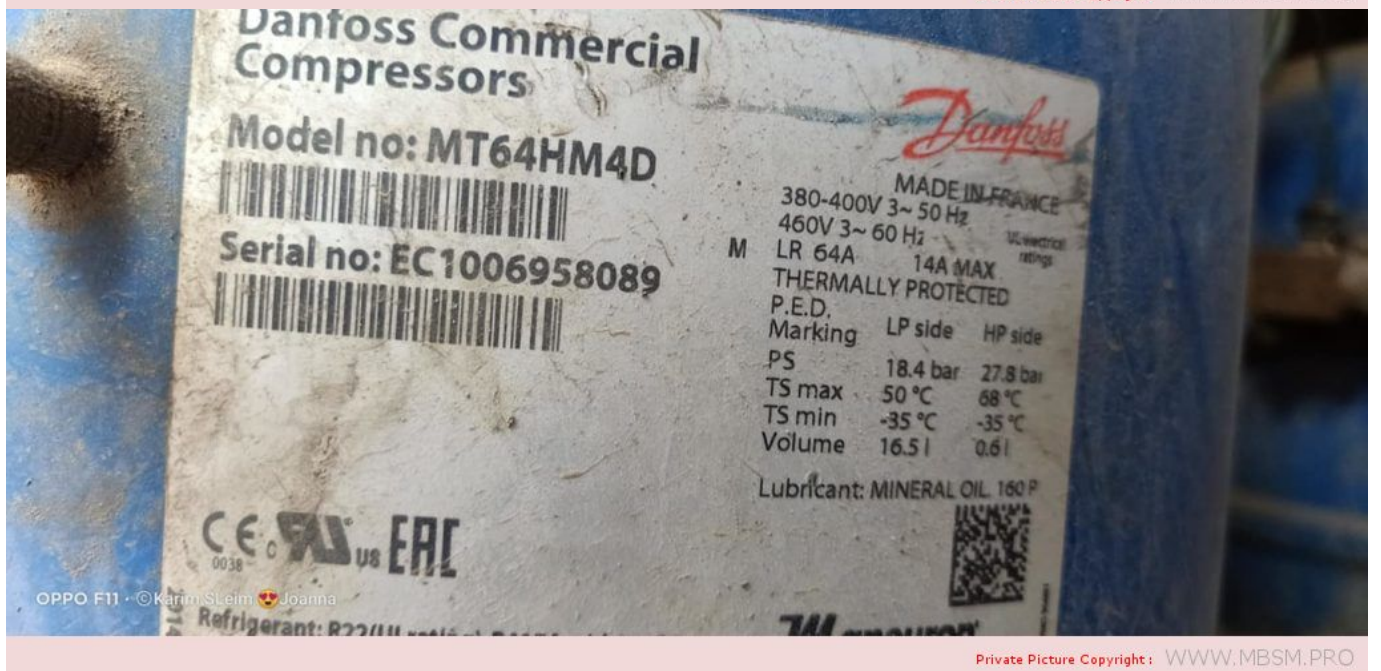
written by [www.mbsm.pro](http://www.mbsm.pro) | 12 April 2021



Private Picture Copyright : [WWW.MBSM.PRO](http://WWW.MBSM.PRO)



Private Picture Copyright: WWW.MBSM.PRO



Private Picture Copyright: WWW.MBSM.PRO

Product : Compressor  
 产地: 法国制造  
 Plant : Made in France  
 客户: 丹佛斯自动控制管理(上海)有限公司  
 Customer service: Danfoss Automatic Controls Management (Shanghai) Co.Ltd  
 地址电话: 上海市宜山路900号科技大楼C楼20层200233 / (021)61513000  
 Address/Tel: 20th Floor Block C, Hi-Tech Building  
 900 Yi Shan Road Shanghai 200233 / (021)61513000  
 警告: 只有具备一定经验和安全程序  
 培训的授权人员才可以进行安装和维修。  
 Warning: The installation and maintenance  
 should be performed by the authorized  
 person only



**Danfoss Commercial Compressors**



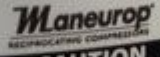
型号: MT64HM4DVE  
  
 序列号: EC1006983516  


产地法国  
 380-400V 3~ 50 Hz  
 460V 3~ 60 Hz  
 额定电流: 6A 最大工作电流: 14A  
 过热保护  
 低压倒  
 最高额定压力 18.4 bar  
 最高额定温度 50 °C  
 最低额定温度 -35 °C

润滑油: MINERAL OIL 160 P



R134a 制冷剂: R22 或 R417A 仅和 160PZ



**WARNING**

Installation and servicing shall be performed by trained personnel only. Failure to observe these safety warnings could result in personal injury or death.  
 1. Do not touch the compressor. Turn off power before servicing. Discharge of capacitors.  
 2. Do not touch the cover in place and securely fastened whenever power is applied to the compressor. Use this equipment on a grounded system only.  
 3. Do not touch the system contains refrigerant and oil under pressure. Remove pressure from both the high and low side before servicing. Wear safety goggles.  
 4. Do not touch the hot surface of the compressor.



**CAUTION**

Use only manufacturer's approved refrigerants, lubricants, and electrical components. Unauthorized refrigerants / lubricant / electrical component could cause fire, explosion, electrical shorting.  
 For details refer to multi language instruction and technical documents available on Danfoss website at [www.danfoss.com](http://www.danfoss.com)



Private Picture Copyright : [WWW.MBSM.PRO](http://WWW.MBSM.PRO)





Private Picture Copyright : [WWW.MBSM.PRO](http://WWW.MBSM.PRO)







Private Picture Copyright : [WWW.MBSM.PRO](http://WWW.MBSM.PRO)

# www.mbsm.pro , 500 Livres Documentaire

Category: Non classé

written by mahdi miled | 12 April 2021



PictureS Mbsm Dot Pro : www.mbsm.pro

تم إضافة أقسام وكتب جديدة إلى مكتبتني على درايف يبلغ الآن عدد الكتب لدي أكثر من 500 كتاب يمكنكم تحميل ما تشاؤون منها بمجرد الضغط على الرابط سوف ينقلكم مباشرةً إلى الكتاب

<https://drive.google.com/folderview...>

كما يمكنكم تحميل الكتب عن طريق قناة التلكرام من خلال هذا الرابط

<https://t.me/ThurayaElectronics>

ملاحظة : ( تحزير إلى أصحاب النفوس الضعيفة ممن يريدون استغلال رابط مكتبتني على درايف لكي يقومون بتقصيره واستبداله بروابط مشبوهة أريد أن أقول لكم أنني أقوم بنقل الكتب ( وتغيري رابط الوصول إليها بشكل مستمر لذلك لن تنجح بهذا الأمر )

www.mbsm.pro , 500 Livres Documentaire.jpg (44 KB)



PictureS Mbsm Dot Pro : [www.mbsm.pro](http://www.mbsm.pro)

Private Picture Copyright : [WWW.MBSM.PRO](http://WWW.MBSM.PRO)

[www.mbsm.pro](http://www.mbsm.pro) , 500 Livres Documentaire.jpg (54 KB)



pyright : [WWW.MBSM.PRO](http://WWW.MBSM.PRO)



## العربا للإلكترونيات

pyright : WWW.MBSM.PRO

---

www.mbsm.pro , Compresseur Cubigel  
, Compresseur GL90AA R-134a 1/4HP 230V  
,

Category: Non classé

written by mahdi miled | 12 April 2021



**cubigel**  
compressors

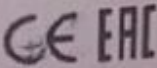
**GL90AA**

220-240V~50Hz

**R134a**

PH1

THERMALLY PROTECTED



MADE IN SPAIN



2

7045338569100901

08261



paramètres techniques

numéro de pièce

605185

fréon

R134a

type

GL90AA

voltage

220-240 V

fréquence

50 Hz

domaine d'utilisation

LBP

poids

9.4 kg

puissance

1/4 HP

puissance absorbée

184 W

cylindrée

8.1 cm<sup>3</sup>

système de moteur

RSIR

hauteur

185.6 mm

puissance à -30°C

148 W

puissance à -25°C

200 W

puissance à -20°C

261 W

puissance à -15°C

330 W

puissance à -10°C

407 W

puissance à -5°C

– W

puissance à 0°C

– W

puissance à +5°C

– W

puissance à +10°C

– W

température ambiante max.

43 °C

[www.mbsm.pro-Cubigel-14H-GL90AA.jpg](http://www.mbsm.pro-Cubigel-14H-GL90AA.jpg) (52 KB)



**cubigel** GL90AA  
220-240V-50Hz  
R134a PH1  
THERMALLY PROTECTED  
MADE IN SPAIN  
CE ENEC  
704526 570100168 08031

www.mbsm.pro-Cubigel-14H-GL90AA.jpg (54 KB)



pyright : WWW.MBSM.PRO



pyright : WWW.MBSM.PRO

---

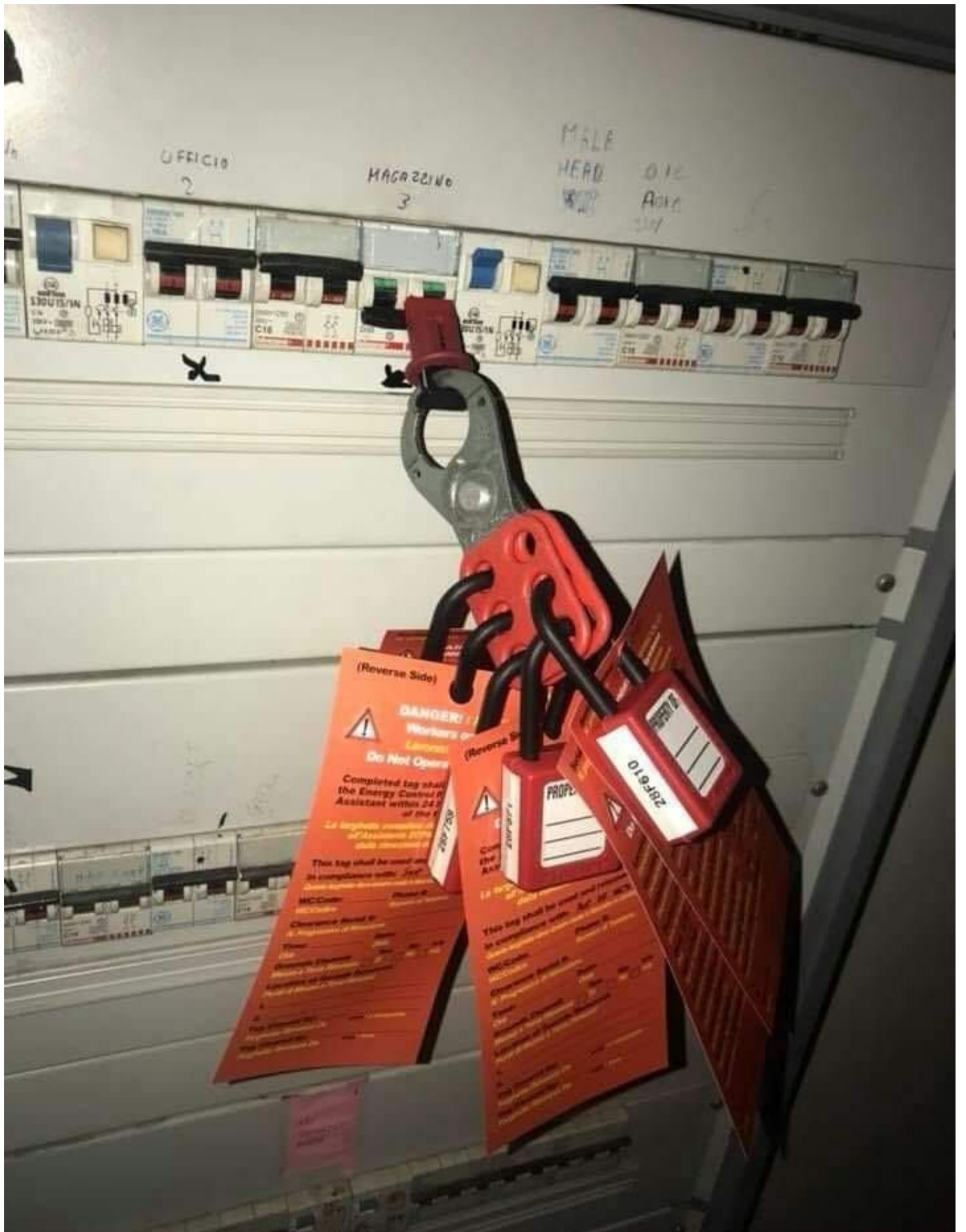
## Mbsm.pro , تأمين الأجهزة , Lockout Tagout , المعدات الكهربائية , نظام السلامة المهنية

Category: Arabe, Développement, Technologie

written by www.mbsm.pro | 12 April 2021



Mbsm Dot Pro : www.mbsm.pro





غلق بمشبك قابل للطي ، مما يسمح لسلسلة أقفال لقفل جهاز واحد أو القفل والعلامة هو إجراء أمان يستخدم في إعدادات الصناعة والبحث للتأكد من أن الآلات الخطرة مغلقة بشكل صحيح ولا يمكن تشغيلها مرة أخرى قبل الانتهاء من أعمال الصيانة أو الإصلاح. يتطلب الأمر عزل " مصادر الطاقة الخطرة " وجعلها غير صالحة للعمل قبل بدء العمل في المعدات المعنية. يتم بعد ذلك قفل مصادر الطاقة المعزولة ووضع علامة على القفل تحدد العامل الذي وضعه. عندها يمسك العامل بمفتاح القفل ، مما يضمن أنه فقط هو أو هي قادر على إزالة القفل وبدء تشغيل الجهاز. هذا يمنع بدء التشغيل العرضي لجهاز ما عندما يكون في حالة خطرة أو عندما يكون العامل على اتصال مباشر به. <sup>1]</sup>

في مختلف الصناعات كوسيلة آمنة للعمل على المعدات الخطرة Lockout-tagout يستخدم ويفوضه القانون في بعض البلدان.

## www.mbsm.pro , when capacitor explodes , Pictures

Category: Pictures,Technologie,Tester ok  
written by www.mbsm.pro | 12 April 2021



pyright : WWW.MBSM.PRO

A capacitor is a device used to store an electric charge, consisting of one or more pairs of conductors separated by an insulator.

Unexpectedly the electrolytic capacitors explodes with huge sound and sometime it smoke.

Get started , how to explode a capacitor ???

All capacitors have a maximum voltage and their destruction depends upon the internal construction. Explosions are understood only by delving into the

internal construction of electrolytic capacitors – the primary culprit. Most small value capacitors are simple sandwiches of conductor and insulator and when the voltage exceeds the dielectric strength of the insulation, they short out and burn, crack, pop, open, or smoke. Explosions are rare for these. Popping open is more likely. Their failure is self evident either visually or by failure to function in the circuit.

Most large value capacitors in order to be as small in physical size as possible, have to get the conductive plates of the capacitor as close together as possible and at the same time not so small that the voltage rating is impractical.

It is for this reason that the family of electrolytic capacitors was developed. The trick they use to get high capacity with small separations and reasonable voltage is that they use the “anodizing” of chemical electrolysis on one surface and a water based electrolyte for the other surface. Take one apart and see. Notice that when a conductive metal is “anodized” by electrochemical process it turns into a dull film that is rather tough and is an insulator. This means that the actual conductive plate of the capacitor has this film entirely between itself and the other plate.

Then the other plate uses a trick too. There’s a water base solution soaked into a paper separator. Now if there was no water, the paper would be the dielectric of a normal capacitor separating the plates. But not here. Here the water has an alkali added to become a fair conductor. And as a liquid it soaks right into the surface structures of the capacitor. So it’s not the paper thickness at all – and not even the insulating surface on the other plate, but the inner recesses of the anodized surface that determine the dielectric distances.

So the operating voltage that a capacitor can tolerate depends upon how thick this anodized film is. And that is a function of it’s manufacture. Now there is a most useful characteristic that tells us we are nearing the max voltage, called leakage.

Here is a way you can check this out. Put in series, a test electrolytic capacitor (polarize it correctly), a variable power supply, a microammeter, and a 1 meg resistor (to limit and protect the meter). From zero as you increase the voltage there will be no current initially, then as you approach the spec op voltage, there will start a small leakage current. Since you have a limiting resistor here, you can increase the voltage without damage. continuing to increase the voltage discovers an increasing leakage current. It is a matter of practice how much safety you apply between the rating and the actual voltage of the circuit.

You can now see how it is that an electrolytic capacitor fails, it is not a voltage breakdown of the dielectric material, but the increase of leakage current that is troublesome. A rising leakage means heat which will boil the water and make steam – that’s the explosion process.

This is explosion as occasional failure of the few. But there is a more spectacular explosion process – it’s explosion by mistake – namely being installed backward. In such a case, the anodizing chemistry is reversed and rather rapidly, the anodized film starts to reverse, and quickly thins out at a weak spot in the rather large effective film area of the capacitor. Then we have short circuit currents and steam generation rather quickly. This sort of explosion usually fills the space (the casing or the whole room if exposed) with little shreds of aluminum foil and alkali soaked paper.

This insightful solution is most successful to achieve capacitors with large values in small spaces, but has a lot of lesser characteristics as the price to pay.

The worst limit, is storage. Electrolytic capacitors store very poorly, and the voltage rating can reduce substantially as the internal chemistry deteriorates. Some equipment manufacturers recommend that capacitors stored for a few years have their inner anodizing conditions restored by simply putting them to the spec voltage for a day to restore full spec.

At the least, if you replace capacitors with old stock, and it didn't explode when power was restored, be aware that it may not reach it's spec capacity value for a few hours. A capacitor in use will always be maintained by the voltage in the circuit you use it in.

When electrolytics are used without the circuit supplying a maintenance voltage to keep the anodized film that all depends upon, such as in speaker cross over applications that have no sustaining DC, then the values of the capacitor will deteriorate at least at storage rates, and if AC currents are substantial, even faster.

[mbsm-dot-pro-capacitor-explodes- Pictures-A.jpg \(4 MB\)](#)



[mbsm-dot-pro-capacitor-explodes- Pictures-A.jpg \(1 MB\)](#)



pyright : WWW.MBSM.PRO



pyright : WWW.MBSM.PRO

mbsm-dot-pro-capacitor-explodes- Pictures-B.jpg (3 MB)



Picture Copyright : WWW.MBSM.PRO

mbsm-dot-pro-capacitor-explodes- Pictures-B.jpg (1 MB)



pyright : WWW.MBSM.PRO



pyright : WWW.MBSM.PRO

mbsm-dot-pro-capacitor-explodes- Pictures-C.jpg (3 MB)



Picture Copyright : WWW.MBSM.PRO

mbsm-dot-pro-capacitor-explodes- Pictures-C.jpg (1 MB)



pyright : WWW.MBSM.PRO



pyright : WWW.MBSM.PRO

mbsm-dot-pro-capacitor-explodes- Pictures-D.jpg (3 MB)



mbsm-dot-pro-capacitor-explodes- Pictures-D.jpg (1 MB)



pyright : WWW.MBSM.PRO



pyright : WWW.MBSM.PRO

mbsm-dot-pro-capacitor-explodes- Pictures-F.jpg (2 MB)



mbsm-dot-pro-capacitor-explodes- Pictures-F.jpg (748 KB)



pyright : WWW.MBSM.PRO



pyright : WWW.MBSM.PRO

mbsm-dot-pro-capacitor-explodes- Pictures-E.jpg (3 MB)



Private Picture Copyright : WWW.MBSM.PRO

mbsm-dot-pro-capacitor-explodes- Pictures-E.jpg (1 MB)



pyright : WWW.MBSM.PRO



pyright : WWW.MBSM.PRO

mbsm-dot-pro-capacitor-explodes- Pictures-G.jpg (2 MB)



mbsm-dot-pro-capacitor-explodes- Pictures-G.jpg (856 KB)



pyright : WWW.MBSM.PRO



pyright : WWW.MBSM.PRO

mbsm-dot-pro-capacitor-explodes- Pictures-H.jpg (2 MB)



Picture Copyright : WWW.MBSM.PRO

mbsm-dot-pro-capacitor-explodes- Pictures-H.jpg (690 KB)



pyright : WWW.MBSM.PRO



pyright : WWW.MBSM.PRO

mbsm-dot-pro-capacitor-explodes- Pictures-I.jpg (2 MB)



mbsm-dot-pro-capacitor-explodes- Pictures-I.jpg (1 MB)



pyright : WWW.MBSM.PRO



pyright : WWW.MBSM.PRO

mbsm-dot-pro-capacitor-explodes- Pictures-J.jpg (2 MB)



mbsm-dot-pro-capacitor-explodes- Pictures-J.jpg (739 KB)

Photo Copyright : WWW.MBSM.PRO



pyright : WWW.MBSM.PRO



pyright : WWW.MBSM.PRO

---

## www.mbsm.pro , EJECTEUR DAB, Pompe Monobloc Série Pa Double Aspiration Autoamorçante

Category: Plomberie,Tester ok  
written by mahdi miled | 12 April 2021



Private Picture Copyright : [WWW.MBSM.PRO](http://WWW.MBSM.PRO)

Électropompe centrifuge autoamorçante double aspiration du type jet, appropriée pour l'aspiration jusqu'à 50m de profondeur. Corps de pompe et support en fonte, roue en noryl ou sur demande en laiton. Injecteur type P20 standard de 4" et 2". Température maxi. du liquide pompé : 50°C. Pression maxi. de fonctionnement : 8 bars.

Descriptif produit

Pompe pour aspirations profondes

Plage de fonctionnement: jusqu'à 4,3 m<sup>3</sup>/h

Plage de température du liquide: de -0°C à 40°C pour autres applications. de 0°C à +35°C pour usage domestique Liquide pompé: propre, ne contenant pas de corps solides ou abrasifs, non visqueux, non agressif, non cristallisé et chimiquement neutre.

Température ambiante maximum: + 40°C

Pression de service maximum: 6 bar (600 kPa) pour DP 82 DP 102 8 bar (800 kPa) pour DP 151 – DP 251

Indice de protection: IP 44 (IP 55 au bornier)

Classe d'isolement: F

EJECTEUR-DAB-mbsm-dot-pro (1).jpg (64 KB)



PictureS Mbsm Dot Pro : [www.mbsm.pro](http://www.mbsm.pro)

Private Picture Copyright : [WWW.MBSM.PRO](http://WWW.MBSM.PRO)

EJECTEUR-DAB-mbsm-dot-pro (1).jpg (14 KB)



pyright : [WWW.MBSM.PRO](http://WWW.MBSM.PRO)



pyright : [WWW.MBSM.PRO](http://WWW.MBSM.PRO)

EJECTEUR-DAB-mbsm-dot-pro (8).jpg (8 KB)



PictureS Mbsm Dot Pro : [www.mbsm.pro](http://www.mbsm.pro)

Private Picture Copyright : [WWW.MBSM.PRO](http://WWW.MBSM.PRO)

EJECTEUR-DAB-mbsm-dot-pro (8).jpg (6 KB)



pyright : [WWW.MBSM.PRO](http://WWW.MBSM.PRO)



pyright : [WWW.MBSM.PRO](http://WWW.MBSM.PRO)

EJECTEUR-DAB-mbsm-dot-pro (2).jpg (1 MB)



Richard MBSM dot Pro  
www.mbsm.pro  
Photo Picture Copyright : WWW.MBSM.PRO

EJECTEUR-DAB-mbsm-dot-pro (2).jpg (465 KB)



pyright : WWW.MBSM.PRO



pyright : WWW.MBSM.PRO

EJECTEUR-DAB-mbsm-dot-pro (3).jpg (1 MB)



Richard MBSM dot Pro www.mbsm.pro  
Photo Picture Copyright : WWW.MBSM.PRO

EJECTEUR-DAB-mbsm-dot-pro (3).jpg (467 KB)



pyright : WWW.MBSM.PRO



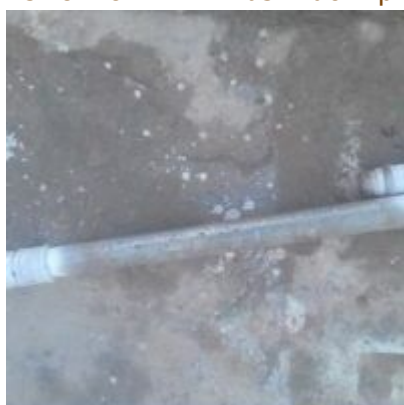
pyright : WWW.MBSM.PRO

EJECTEUR-DAB-mbsm-dot-pro (4).jpg (1 MB)



Richard MBSM Dot Pro www.mbsm.pro  
Photo Picture Copyright: WWW.MBSM.PRO

EJECTEUR-DAB-mbsm-dot-pro (4).jpg (408 KB)



pyright : WWW.MBSM.PRO



pyright : WWW.MBSM.PRO

EJECTEUR-DAB-mbsm-dot-pro (5).jpg (1 MB)



Richard MBSM dot Pro www.mbsm.pro  
Photo Picture Copyright : WWW.MBSM.PRO

EJECTEUR-DAB-mbsm-dot-pro (5).jpg (524 KB)



pyright : WWW.MBSM.PRO



pyright : WWW.MBSM.PRO

EJECTEUR-DAB-mbsm-dot-pro (6).jpg (1 MB)



Richard MBSM dot Pro www.mbsm.pro  
Picture Copyright: WWW.MBSM.PRO

EJECTEUR-DAB-mbsm-dot-pro (6).jpg (318 KB)



pyright : WWW.MBSM.PRO



pyright : WWW.MBSM.PRO

EJECTEUR-DAB-mbsm-dot-pro (7).jpg (1 MB)



Richard Mann-Gut Pro www.mbsm.pro  
Photo Picture Copyright: WWW.MBSM.PRO

EJECTEUR-DAB-mbsm-dot-pro (7).jpg (451 KB)



pyright : WWW.MBSM.PRO



pyright : WWW.MBSM.PRO

# www.mbsm.pro , panne , compresseur, frigorifique , pas de refoulement et présence d'aspiration

Category: Solutions,Technologie,Tester ok  
written by mahdi miled | 12 April 2021



PictureS Mbsm Dot Pro : [www.mbsm.pro](http://www.mbsm.pro)

Solution d'absence de refoulement et de changer le compresseur c'est une clapets  
casser

Comment tester les clapets d'un compresseur ?

---

## www.mbsm.pro , Picture ,Traditionnel, from , Chebba , Mahdia , Tunisia ,

Category: Pictures,Publicité,Web  
written by mahdi miled | 12 April 2021



PictureS Mbsm Dot Pro : [www.mbsm.pro](http://www.mbsm.pro)

ملاها اللبسة العربي وشابنا  
#اللبسة التقليدية الشابة  
صور جميلة من إنتاج نادي الصورة بدار الثقافة الشابة