

mbsm.pro, Refrigeration, Compressor, GFF57AA, SEBERIA, Hermetic, Compressor GFF57AA, LBP, R134a, Disp.5.7cc, 1/5HP, Series, LBP

Category: compressor

written by www.mbsm.pro | 17 December 2021



Private Picture Copyright : WWW.MBSM.PRO

mbsm.pro, Refrigeration, Compressor, GFF57AA, SEBERIA, Hermetic, Compressor GFF57AA, LBP, R134a, Disp.5.7cc, 1/5HP, Series, LBP

Compressor, Embraco, EMX20CLC, High-quality, compressor Aspera, EMX20CLC, LBP R600a, 220-240V 50Hz, 3.97 cm³, 1/12HP

Category: compressor

written by www.mbsm.pro | 17 December 2021

Model **EMX20CLC**

Code 513309529...S

embraco POWER IN.
CHANGE ON.

220V 60 1~



MECHANICAL DATA

Bore: 19 mm
Stroke: 14 mm
Oil Charge: 180ml
Oil Type Configuration: ALQUILB
Oil Type Viscosity: ISO5
Weight: 7.88 kg

GENERAL DATA

Application: LBP
Refrigerant: R600a
Evaporating Temperature Range: -35°C to -10°C
Compressor Cooling: Static
Type: Hermetic reciprocating
Technology Type: On-Off
Expansion Device: Capillary Tube
Packing Quantity: 100
Displacement: 3.97 cm³
Horse power: 1/12 hp
Approvals:

ELECTRICAL DATA

Motor Type: RSCR
Starting Torque: LST
Voltage working range at 50 Hz: 198-242 V
Voltage working range at 60 Hz: 198-242 V
Maximum Motor Temperature: 130 °C
Start Winding Resistance: 22.1 Ω (± 10%) at 25°C
Run Winding Resistance: 50.65 Ω (± 10%) at 25°C



Private Picture Copyright : WWW.MBSM.PRO

GENERAL DATA

Application: LBP
Refrigerant: R600a
Evaporating Temperature Range: -35°C to -10°C
Compressor Cooling: Static
Type: Hermetic reciprocating
Technology Type: On-Off
Expansion Device: Capillary Tube
Packing Quantity: 100
Displacement: 3.97 cm³
Horse power: 1/12 hp
Approvals:

MECHANICAL DATA

Bore: 19 mm
Stroke: 14 mm
Oil Charge: 180ml
Oil Type Configuration: ALQUILB
Oil Type Viscosity: ISO5
Weight: 7.88 kg

ELECTRICAL DATA

Motor Type: RSCR
Starting Torque: LST
Voltage working range at 50 Hz: 198-242 V
Voltage working range at 60 Hz: 198-242 V
Maximum Motor Temperature: 130 °C
Start Winding Resistance: 22.1 Ω (± 10%) at 25°C
Run Winding Resistance: 50.65 Ω (± 10%) at 25°C

Model **EMX20CLC**

Code 513309529...S

embraco POWER IN.
CHANGE ON.

220V 60 1~



MECHANICAL DATA

Bore: 19 mm
Stroke: 14 mm
Oil Charge: 180ml
Oil Type Configuration: ALQUILB
Oil Type Viscosity: ISO5
Weight: 7.88 kg

GENERAL DATA

Application: LBP
Refrigerant: R600a
Evaporating Temperature Range: -35°C to -10°C
Compressor Cooling: Static
Type: Hermetic reciprocating
Technology Type: On-Off
Expansion Device: Capillary Tube
Packing Quantity: 100
Displacement: 3.97 cm³
Horse power: 1/12 hp
Approvals:



ELECTRICAL DATA

Motor Type: RSCR
Starting Torque: LST
Voltage working range at 50 Hz: 198-242 V
Voltage working range at 60 Hz: 198-242 V
Maximum Motor Temperature: 130 °C
Start Winding Resistance: 22.1 Ω (± 10%) at 25°C
Run Winding Resistance: 50.65 Ω (± 10%) at 25°C

Private Picture Copyright: WWW.MBSM.PRO



Private Picture Copyright: WWW.MBSM.PRO

Mbsm_dot_pro_private_PDF_EMX20CLC_techTélécharger

Bitzer, Compressor, S6F-30.2Y-40P,
Compressor Selection, Semi-hermetic
Reciprocating, 1450 min-1 , 101,1

(LP) , 30hp

Category: compressor

written by www.mbsm.pro | 17 December 2021



Type S6F-30.2Y-40P

S.No. 1600308267

BITZER KÜHLMASCHINENBAU GMBH
Made in Germany



Nominal Voltage V 3Ph~	Frequ. Hz	Operat. C. A (max.)	Locked Rotor C.		Displacem. m³/h	Speed RPM
			A (Y)	A (YY)		
380-420	50	51	135	220	101,4	1450
440-480	60	51	135	220	122	1750

IP 54 LP/HP max. 19 / 28 bar



BITZER is raising the bar in terms of technology and capacity for expanded low temperature applications with the 2nd generation of 2-stage compressors. This series is the result of extensive research on the basis of years of experience in the construction of highly efficient and solid reciprocating compressors. The gas flow control and working valves are specially adapted for low temperature applications.

- Displacement at 1450 min⁻¹ : 101,1 (LP) 50,5 (HP)
- Number of cylinders : 6
- Oilcharge : 4,75 dm³

Displacement (1450 RPM 50Hz):101.10 / 50.50 m³/h Displacement (1750 RPM 60Hz):122.02 / 60.95 m³/h

The Bitzer Compressor is high quality!

Displacement (1450 RPM 50Hz):101.10 / 50.50 m³/h

Displacement (1750 RPM 60Hz):122.02 / 60.95 m³/h

No. of cylinder x bore LP/HP x stroke:6+6 x 82/ 82 mm x 55 mm

Max. pressure (LP/MP/HP):19 / 19 / 28 bar

Connection suction line:42 mm – 1 5/8 inch

Connection discharge line:35 mm – 1 3/8 inch

Oil type R404A/R507A:BSE32 (Standard)

Oil type R448A/R449A:BSE32 (Standard)

Oil type R22:B5.2 (Option) We can also provide the following models

4JTE-15K

GYD80485VAYB4

GED60235VLB332

GMD60137VBYR632

GED60485VBYR3-1

CSH7573-70Y-40P

GYD80182VLYB632

GYD60385VLYR2-2

GED80154VLR332

GYU80295VLR4-2

GSU60120VLB6-2

GED60137VAYB3-1

GUU60154VLR532

GUD80295VLR232

GSD80295VLR6-1

GTU60137VLYB3-1

GUD60137VBYR5-1

GYD80235VBYB332

GYD60421VAYR332

GMD60295VBR3-1

GED80154VBYB6

4NEH-14-40S

GMU60154VLY

GYD60154VAB4-2

GYD80182VAYR4-2

GYD80421VBR5-1

GYD60385VLYR4-1

4TE-9.F3Y-40S

GMD60182VBYB3-2

GMD80120VLR232
 GUD60120VBYR5-2
 GSD60154VAYR232
 GMD60154VBYR632
 44EES-12-40S
 GMD60154VBB432
 GUD80421VWR4-2
 GYD80385VAYR2-2
 GTD60385VLB632
 GED60235VLB2
 GED60154VAYR4
 GSD80421VWR5-2
 GUD60421VBR5
 GYD80182VBYB5-1
 GED60295VBB5
 GED80421VAR4-1
 GED60385VLYB3
 GYU80421VLR2
 GSD80485VBB5-1
 GED60120VLB2
 GUD60421VBR332
 GTD60154VAB4-2
 GED60421VAYB6-1
 GMD60485VBB5-1
 GSD60485VAYR4
 GED80295VLYR6-1
 GSD60235VAYB232
 GTD60385VBYR3-1
 GUD60154VBB3-2
 GUD80295VWB6-2
 GED60421VAR5
 GMD80421VBR4
 GED80182VLR532
 GSD60154VBYB6-1
 GTD80421VBYR332
 GSD60182VAYB4-1
 GUD80485VWYR5-2
 GSU80295VLYR6-1
 GSD80182VLYR2-2
 GSU80385VLB432
 GED80295VAY
 GED80295VAB3-2
 GYD60120VAR4

With liquid subcooling 50Hz (R404A/R507A)

Compressor type	Cond. temp. [°C]	Q _o / P _e	Evaporating temperature °C									
			-25	-30	-35	-40	-45	-50	-55	-60	-65	-70
S6F-30.2Y	30	Q _o	43400	37400	31750	26500	21700	17420	13690	10540	7920	5800

Pe	2,53	0,65	8,78	16,94	15,15	13,42	11,77	10,20	8,74	7,40	
35	Qo	42500	36600	31050	25900	21200	17030	13420	10340	7780	5680
Pe	3,85	1,86	9,89	7,94	6,04	4,21	12,45	10,78	9,23	7,80	
40	Qo	41500	35700	30300	25300	20700	16680	13170	10150	7590	
Pe	25,20	23,10	21,01	18,96	16,95	15,00	13,14	11,37	9,72		
45	Qo	40450	34800	29550	24700	20300	1660	12930	9920		
Pe	26,59	24,37	22,16	19,98	17,86	15,80	13,83	11,96			
50	Qo	39500	34000	28850	24100	19870	16060	12650			
Pe	28,07	25,69	23,33	21,01	18,75	6,57	14,49				
55	Qo	38800	33250	28200	23600	19490	15740				
Pe	29,64	27,06	24,51	22,03	19,63	17,32					

Qo – Cooling capacity [Watt], Pe – Power consumption [kW]

Without liquid subcooling 50Hz (R404A/R507A)

Compressor type	Cond. temp. [°C]	Qo / Pe		Evaporating temperature °C								
		-25	-30	-35	-40	-45	-50	-55	-60	-65	-70	
S6F-30.2Y	30	Qo	38050	31700	26050	21000	16620	12880	9790	7280	5300	3760
Pe	1,26	18,81	16,61	14,64	12,90	11,37	10,02	8,86	7,85	7,00		
35	Qo	36000	29950	24500	19710	15570	12070	9180	6840	4980	3510	
Pe	22,11	19,66	17,41	15,37	13,53	11,88	10,42	9,13	8,02	5,72		
40	Qo	33800	28000	22900	18390	14530	11280	8590	6400	4620		
Pe	22,95	20,53	18,26	16,15	14,20	12,42	10,82	9,41	8,18			
45	Qo	31450	26050	21250	17080	13510	10500	8000	5920			
Pe	23,82	21,42	19,12	16,94	14,89	13,00	11,26	9,71				
50	Qo	28950	24000	19590	15770	12490	9710	7370				
Pe	24,72	22,31	19,98	17,74	15,61	13,61	11,76					
55	Qo	26400	21900	17890	14430	11440	8880					
Pe	25,67	23,19	20,80	18,52	16,34	14,27						

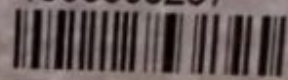
Qo – Cooling capacity [Watt], Pe – Power consumption [kW]



Type S6F-30.2Y-40P

S.No. 1600308267

BITZER KÜHLMASCHINENBAU GMBH
Made in Germany



Nominal Voltage V 3Ph~	Frequ. Hz	Operat. C. A (max.)	Locked Rotor C.		Displacem. m³/h	Speed RPM
			A (Y)	A (YY)		
380-420	50	51	135	220	101,4	1450
440-480	60	51	135	220	122	1750

IP 54 LP/HP max. 19 / 28 bar





Private Picture Copyright : WWW.MBSM.PRO

Mbsm_dot_pro_private_PDF_S6F-30.2Y-40PTélécharger

Compressor type Displacement at 1450 min-1 Number of cylinders Oil charge Weight Pipe connections Motor Max. operating current Max. power consumption Starting

current(lockedrotor)LPHPDLSLdm3KgmpouceAmpkW
Y/YY56F-30.2Y101,150,567.752343513/842
5415/8
21/8380 ..420YY/3/50
440 ..480 YY/3/605131,9135/220

Panasonic, DGH73C14RAX, R134a, D Series, Reciprocating, Fixed, Speed, LBP, 1/4Hp

Category: compressor
written by www.mbsm.pro | 17 December 2021



Private Picture Copyright : WWW.MBSM.PRO

https://www.mbsm.pro/wp-content/uploads/2021/01/Mbsm_dot_pro_private_PDF_Qb77c16glx5.pdf

Item	Performance characteristics
Refrigerant	R134a
Displacement (cm ³)	7.3

Item	Performance characteristics
Voltage (V)	220
Frequency (Hz)	50
Motor Type	RSCR
Capacity@ASHRAE	215
COP@ASHRAE	1.6
Capacity@CECOMAF	—
COP@CECOMAF	—



DGH	DGH57C79RAU	5.7	115V 60Hz	RSCR	215	1.38	-	-
				RSIR	-	-	-	-
	DGH66C12RAR	6.6	110/127V 60Hz	RSCR	212	1.63	-	-
				RSIR	-	-	-	-
	DGH66C13GAX	6.6	220V 50Hz	RSCR	251 / 251	1.62 / 1.60	-	-
				RSIR	189	1.42	-	-
	DGH66C15RLP	6.6	220V 60Hz	RSCR	-	-	-	-
				RSIR	-	-	-	-
	DGH66C16RAP	6.6	220V 60Hz	RSCR	251	1.45	-	-
				RSIR	-	-	-	-
	DGH66C94RAU	6.6	115V 60Hz	RSCR	251	1.60	-	-
				RSIR	-	-	-	-
	DGH66C96RAW	6.6	220/240V 50Hz	RSCR	238	1.68	-	-
				RSIR	-	-	-	-
	DGH73C14RAE	7.3	220V 50/60Hz	RSCR	190 / 190	1.60 / 1.56	-	-
				RSIR	-	-	-	-
DGH73C15GAX	7.3	220V 50Hz	RSCR	215 / 270	1.55 / 1.60	-	-	
			RSIR	215	1.45	-	-	
DGH73C15RAX	7.3	220V 50Hz	RSCR	-	-	-	-	
			RSIR	-	-	-	-	
DGH73C15RAW	7.3	220/240V 50Hz	RSCR	215	1.60	-	-	
			RSIR	-	-	-	-	

Private Picture Copyright: WWW.MBSM.PRO

Mbsm_dot_pro_private_PDF_panasonic-compressor-Serie-DTélécharger

KONOR, COMPRESSOR, GQR80AA, R134A, LBP, 240V, 50Hz, 8.1cm³, 1/4HP, 198W, -KONOR CATALOGE pdf

Category: compressor

written by www.mbsm.pro | 17 December 2021



Private Picture Copyright: WWW.MBSM.PRO

GQR80AA 8.1cm³ 186MM RSIR 198W 1.19W/W 220-240V/50Hz 1/4HP 9.4Kg

KONOR COMPRESSOR GQR80AA R134A LBP 240V 50Hz

Product description:

R134a GQR80AA series sealed refrigeration compressor 220-240v/50Hz

The main feature:

strong loading capacity,
high efficiency,
low noise,
light vibration,
good reliability.

suitable for mid-size refrigerators, freezers, displayers, beer displayers and other mid-size refrigeration appliances. The structure form is hermetical crank connecting-rod reciprocating piston type.

They are the best selling high-tech compressors sold in the world. They are ideal for domestic refrigeration and also for small commercial applications. They are small, have low noise and vibration levels, they achieve the highest levels of efficiency available in the market for this category.

KONOR	Displ.	power	Motor type	V/Hz	Cooling capacity	W ^{Net}	Weight	KG
GQR60AA	61/6		RSIR	220-240V/50Hz		140		9.4
GQR70AA	6.61/5		RSIR	220-240V/50Hz		165		9.4
GQR80AA	8.11/4		RSIR	220-240V/50Hz		198		9.4
GQR90AA	9.11/4		RSIR	220-240V/50Hz		220		10.1
GQY99AA	9.91/4		RSIR	220-240V/50Hz		270		10.9
GQY12AF	11.81/3		CSIR	220-240V/50Hz		325		10.56
GQY16AF	16.23/8		CSIR	220-240V/50Hz		380		12.1
GP16MG	16.25/8		CSIR	220-240V/50Hz		870		12.5
GP12MG	11.85/8		CSIR	220-240V/50Hz		656		10.9
GP12TG	11.83/8		CSIR	220-240V/50Hz		1140		11.8
GQR80TG	8.11/4		CSIR	220-240V/50Hz		730		9.8
GQR90TG	9.11/4		CSIR	220-240V/50Hz		830		10.5
GQR60TG	61/5		CSIR	220-240V/50Hz		520		9.8

One year warranty*.

Mbsm_dot_pro_private_PDF_2017-KONOR-CATALOGETélécharger



KONOR Compressor GQR80AA

Heating & Refrigerating
SIKELAN

GQR80TG

220-240V ~ 50/60Hz 1PH

R134a



REF. CAPACITY: 400W

17.08.2018

20230182T

Zhejiang Waidi Refrigeration Technology Co., LTD.

Suct

Cold room, Copeland, ZR scroll, compressor, ZR144KCE-TFD-550, 12HP Copeland Scroll Compressor, Hermetic Compressor Specifications

Category: compressor

written by www.mbsm.pro | 17 December 2021

Model	Horse Power (HP)	Cooling capacity(w)	InputPower(kw)	Current (A)	Bottom corner size(mm)	Weight(KG)
ZR144KC-TFD-550	12	34730	10.87	19.6	190	63



Private Picture Copyright : WWW.MBSM.PRO

Type: Hermetic scroll compressors **Producer:** Copeland **Series:** ZR

Model: ZR144KCE-TFD

Technical data

Displacement [m ³ /h]:	33,2
Sound power [dBA]:	75
Sound pressure level [dB]:	64
Net Weight [kg]:	61,2
Gross Weight [kg]:	72
Oil charge [dm ³]:	3,3
Maximum high pressure [bar]:	32
Maximum standstill pressure [bar]:	20
Minimal lowside temperature [°C]:	-35
Maximum lowside temperature [°C]:	52
PED category:	2

Electrical data

Power supply [V~/Hz]:	380-420/3/50Hz
Locked rotor current [A]:	118
Max. operating current [A]:	22,3
Winding resistance [Ω]:	1,2

Connections

Suction connection with supplied sleeve:	1 3/8" inches
Discharge connection with supplied sleeve:	7/8"
Compressor Copeland Scroll ZR144KCE-TFD-425, R407C, 380-420V	
Type of engine:	TFD

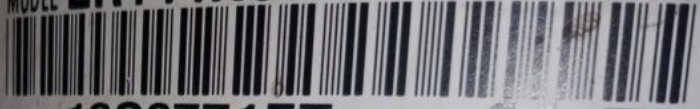
Displacement: 33.2 m³ / h (191,23 cm³)
 Cooling capacity (0 ° C): 20.00 kW.
 Oil quantity: 3.38 L.
 Noise level: 61 dBA – 1 m.
 Max. Noise level: 75 dBA.
 Max. Operating current (FLA): 22.3 A.
 LRA: 118.0 A.
 Connectors: 1.3 / 8 “x 7/8”.
 Dimensions (LxWxH): 264x285x533 mm
 Net Weight: 61.2 kg

Shipping Class	Standard
Scope Of Application	HBP
Lieferzeit	Ca. 10-14 Tage
Type Of Construction	Scroll
Maker	Copeland
Manufacturer No.	ZR144KCE-TFD-425
Style	1
Refrigerants	R407C
Series	ZR
Condensing Units Compressors	Compressors
Suspense	380-420V
Weight In Kg	61

Model	Horse Power (HP)	Cooling capacity(w)	InputPower(kw)	Current (A)	Bottom corner size(mm)	Weight(KG)
ZR144KC-TFD-550	12	34730	10.87	19.6	190	63



MODEL ZR144KCE - TFD - 550



SERIAL 13G6771ET



US
SA2337



I-OPER MAX		PED CAT2 / FG2 HIGH SIDE PS = 32.0 BAR	
22.3	22.3	∇ (m ³ /h)	BOX
22.3	22.3	40.05	IP
		33.18	21
		n (min ⁻¹)	PED LOW SIDE
		3500	TS MIN = -35 °C
		2900	TS MAX = 50 °C
			PS = 20.0 BAR
		93384-016 UA7635 2	THERMALLY PROTECTED

WARRANTY

ADVERTENCIA

Únicamente personal capacitado deberá efectuar el servicio del equipo. El no seguir estas advertencias de seguridad podrá ser causa de lesiones graves o la muerte.

PELIGRO DE DESCARGA ELECTRICA

Desconecte la corriente eléctrica antes de dar servicio. Descargue todos los capacitores. Este equipo debe usarse únicamente en un sistema conectado a tierra. Una falta de conexión a tierra puede causar lesiones graves o la muerte.



PETRA

PETRA ENGINEERING INDUSTRIES CO.
P.O. BOX 141351 Amman 11814 JORDAN



MODEL

REF. No.

SERIAL NO.

NOMINAL POWER SUPPLY VOLT/Hz /Ph

COMP. MOTOR	QTY	VOLT	LRA	RLA	Max. Amp.	hp
COMP. MOTOR A	<input type="text" value="1"/>	<input type="text" value="380"/>	<input type="text" value="110"/>	<input type="text" value="19 6"/>	<input type="text" value="22 3"/>	<input type="text" value="12"/>
COMP. MOTOR B	<input type="text"/>	<input type="text"/>	<input type="text"/>	<input type="text"/>	<input type="text"/>	<input type="text"/>

	QTY	VOLT	Ph	kW	FLA
COND. FAN MOTOR A	<input type="text" value="2"/>	<input type="text" value="380"/>	<input type="text" value="3"/>	<input type="text" value="0 43"/>	<input type="text" value="1 1"/>
COND. FAN MOTOR B	<input type="text"/>	<input type="text"/>	<input type="text"/>	<input type="text"/>	<input type="text"/>
EVAP. FAN MOTOR	<input type="text" value="1"/>	<input type="text" value="380"/>	<input type="text" value="3"/>	<input type="text" value="4"/>	<input type="text" value="8 4"/>
ELECTRIC HEATER	<input type="text" value="3"/>	<input type="text" value="220"/>	<input type="text" value="1"/>	<input type="text" value="3"/>	<input type="text" value="13 6"/>

COIL TEST PRESSURE Psig REFRIGERANT

MINIMUM WATER LOOP VOLUME (GAL)

CHILLER MINIMUM WATER FLOW RATE (GPM)

Made in Jordan



Manufacturing Year

COMPRESSOR, DANFOSS, NL8.4MF, R134A, 1/4HP, 8.35CM³, Compressor Danfoss Secop NL8.4MF, 105G6879, MBP -R134a, 220-240V/1/50Hz, discharge 8.35 cm³, motor type RSIR / CSIR, oil type POE, oil charge 320 cm³, 741 W at +7.2 / +55° C, LRA 11.7 A, maximum refrigerant charge 600 g, height: 197 mm, weight 10.5 kg

Category: compressor

written by www.mbsm.pro | 17 December 2021



Private Picture Copyright: WWW.MBSM.PRO

230V 50/60HZ

FICHE TECHNIQUE COMPRESSEUR DANFOSS NL8.4MF AU R134A 1/4HP 8.35CM3

Puissance HP 1/4
Tension (V) 230
Fréquence (Hz) 50/60
Marque pie DANFOSS
Cylindré 8.35
Référence marque NL8.4MF



Private Picture Copyright : WWW.MBSM.PRO

R134a	refrigerant	605089	رقم القطعة
HP 1/4	power	NL8.4MF	type
RSIR/CSIR	motor system	cm ³ 8.35	cylinder capacity
W 491	power at -5°C	W 390	power at -10°C
W 749	power at +5°C	W 610	power at 0°C
W 235	power at -20°C	W -	power at -25°C
W 912	power at +10°C	W 305	power at -15°C
HMBP	application	ASHRAE	test method
Hz 50	frequency	kg 10.5	weight
mm 197	height	V 220-240	voltage



Private Picture Copyright: WWW.MBSM.PRO

Mbsm_dot_pro_private_PDF_NL8.4MFTélécharger

Embraco, Universal, EM45HHR, R134a, Refrigeration Compressor, Low, Medium & High Back Pressure, 1/8hp, Nominal Motor HP, For use with refrigerators, ice makers, frozen food cabinets, frozen food display cases, display windows, 115v

Category: compressor

written by www.mbsm.pro | 17 December 2021



Private Picture Copyright: WWW.MBSM.PRO

Embraco Universal EM45HHR R134a Refrigeration Compressor. Low, Medium & High Back Pressure. 1/8 Nominal Motor HP. For use with refrigerators, ice makers, frozen food cabinets, frozen food display cases, display windows, etc.

Replaces Embraco EMI40HNR and EM45HNR and Tecumseh AEA3417YXA.

Motor: Resistive Start Inductive Run & Captive Start Inductive Run (RSIR/CSIR)

Evaporating Temperatures: -10°F to 45°F

Product Specifications

BTU Capacity HBP:	1775
BTU Capacity LBP & MBP:	420
Horsepower (HP):	1/8
Locked Rotor Amps (LRA):	17.0
Motor Type:	RSIR/CSIR
Required Refrigerant :	R134a
Skill Level:	
Starting Torque:	Normal
Volts (V):	115

[Mbsm_dot_pro_private_PDF_EM45HHR-1Télécharger](#)

[Mbsm_dot_pro_private_PDF_EM45HHRTélécharger](#)

unit #
7511

TRUE®
True Manufacturing Co., Inc.
True Refrigeration®
O'Fallon, MO 63366

CABINET SERIAL NUMBER: **8947049**

8947049



MADE IN THE USA

MODEL: **GDM - 06 - LD**

115	V	HP COMPRESSOR M/N:	1/8 EM45HHR
60	Hz	REFRIGERANT:	R134A
1	PH	DESIGN PRESSURES - PSIG (kPa)	HIGH SIDE 370 LOW SIDE 140
2.3	A		

REFRIGERANT: 5 Oz. (g)

DBG

BLOWING AGENT: R611
U.S. PATENT NUMBERS:

THIS UNIT LISTED UNDER N.S.F. NO. 7
FOR THE STORAGE AND/OR DISPLAY OF
PACKAGED OR BOTTLED PRODUCTS ONLY





Private Picture Copyright : WWW.MBSM.PRO

GDM-06-LD BLK
8947049





Private Picture Copyright : WWW.MBSM.PRO



ture Copyright : WWW.MBSM.PRO





Private Picture Copyright : WWW.MBSM.PRO



Private Picture Copyright : WWW.MBSM.PRO



TRUE

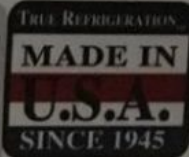
True Manufacturing Co., Inc.
True Refrigeration
O'Fallon, MO 63366
MADE IN THE USA

CABINET
SERIAL
NUMBER:

7966464



7966464



MODEL: **TUC-24**

DESIGN PRESSURES - PSI (N/cm²)

HIGH SIDE **312**

LOW SIDE **140**

REFRIG UNIT:
EM45HHR

CHARGE
REFRIGERANT: **R134A**

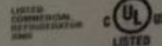
4 oz. (g)

HP	VOLTAGE	HZ	PH	F.L. AMPS
1/8	115	60	1	2.5

BBE

THIS UNIT LISTED UNDER N.S.F. NO. 7

U.S. PATENT NUMBERS:
5,553,354/5,433,082/5,699,676
D273,298/D271,107/5,584,547
6,792,769



DO NOT CLEAN LABEL WITH SOLVENT
DRL

Intended for use in rooms
with an ambient temperature
of 86 (30C) or less



Private Picture Copyright : WWW.MBSM.PRO



Private Picture Copyright : WWW.MBSM.PRO

Compressor, 103U2954, Danfoss, fr10B,
103u, 2954, 1/3 HP, lbp, r12, FR10B
COMPRESSOR 220V, 103U2954FR10B, FR11B
Compressor R-12 3/8 HP 230V, fr21b
Compressor R134a 3/4 HP++/ 1 hp-,
230V, hbp++

Category: compressor

written by www.mbsm.pro | 17 December 2021



Compressor, 103U2954, Danfoss, fr10B, 103u, 2954, 1/4 HP, lbp, r12, FR10B
COMPRESSOR 220V, 103U2954FR10B

COMPRESSOR, DANFOSS, SECOP, HMK95AA,
R600, 145W, 1/5CV, réfrigérateur ,
congélateur, LBP, Equivalent: EMBRACO
NBM1114Y – NBM1116Y, DANFOSS NLE11KK
– NL10K – NL11K – NLE15K, DANFOSS
NLE11KK – NL10K – NL11K – NLE15K,
DANFOSS NLE11KK – NL10K – NL11K –
NLE15K, ELECTROLUX HP14AH – HP12AH,
SECOP TLES8.7KK.3 – HMK95AA

Category: compressor

written by www.mbsm.pro | 17 December 2021



COMPRESSOR, DANFOSS, SECOP, HMK95AA, R600, 145W, 1/5CV, réfrigérateur ,
congélateur, LBP, Equivalent: EMBRACO NBM1114Y – NBM1116Y, DANFOSS NLE11KK –
NL10K – NL11K – NLE15K, DANFOSS NLE11KK – NL10K – NL11K – NLE15K, DANFOSS
NLE11KK – NL10K – NL11K – NLE15K, ELECTROLUX HP14AH – HP12AH, SECOP TLES8.7KK.3
– HMK95AA