

# Mbsm.pro, compressor, 3/8 hp, cae2412a, r12, lbp, Freezing, 310 w

Category: compressor

written by [www.mbsm.pro](http://www.mbsm.pro) | 13 May 2022



Private Picture Copyright: [WWW.MBSM.PRO](http://WWW.MBSM.PRO)

Mbsm.pro, compressor, 3/8 hp, cae2412a, r12, lbp, Freezing, 310 w

Mbsm.pro, compressor, IRE, L16b25,  
1/5 hp, r12, 180 w, 220v 50hz,  
Remplacement, egm70af, gl70aa,  
capillarie 0.026, 1.2 m, 1/5 hp, LBP,  
R134A, 100g

Category: expertise

written by [www.mbsm.pro](http://www.mbsm.pro) | 13 May 2022



Private Picture Copyright : [WWW.MBSM.PRO](http://WWW.MBSM.PRO)

Mbsm.pro, compressor, IRE, L16b25, 1/5 hp, r12, 180 w, 220v 50hz, Remplacement, egm70af, gl70aa, capillarie 0.026, 1.2 m, 1/5 hp, LBP, R134A, 100g

Mbsm.pro, PDF, 1/10 hp, mini Refrigeration Refrigerator Compressor, D53CY1 , r600a, 80 w, rcir, Donper Fridge Compressor , lbp, Model HS-130RN

Category: Files

written by www.mbsm.pro | 13 May 2022



Private Picture Copyright : WWW.MBSM.PRO

Mbsm.pro, PDF, 1/10 hp, mini Refrigeration Refrigerator Compressor, D53CY1 , r600a, 80 w, rcir, Donper Fridge Compressor , lbp, Model HS-130RN

# Mbsm.pro, PDF, compressor, C-BZN200L6X, 1/4 hp, LBP, 826 btu

Category: Files

written by www.mbsm.pro | 13 May 2022

C-QH40L6*	1/19	LBP	2.77	46	54	157	183	1.30	1.34	4.44	4.57	RSCR	N	**	**	3-5	350	167
C-QH50L6*	1/15	LBP	3.58	59	69	203	237	1.30	1.34	4.44	4.57	RSCR	N	**	**	3-5	350	177
C-QH60L6*	1/12	LBP	3.92	65	76	222	260	1.33	1.35	4.54	4.61	RSCR	N	**	**	3-5	350	177
C-QH75L6*	1/10	LBP	4.36	72	85	247	289	1.33	1.35	4.54	4.61	RSCR	N	**	**	3-5	350	177

C-B Type

Models	Power (HP)	App.	Disp. (cc)	Cooling (w)		Cooling (Btu)		COP (w/w)		EER (Btu/w)		Motor type	Cooling Type	Start Cap		Run Cap		Dim.
				50 Hz	60 Hz	50 Hz	60 Hz	50 Hz	60 Hz	50 Hz	60 Hz			mF	vac	mF	vac	
<b>C-BZN Series (Standard Performance)</b>																		
<b>R134a</b>																		
100V / 50Hz, 60Hz.																		
C-BZN100L0*	1/8	LBP	4.50	109	131	372	447	1.14	1.19	3.89	4.06	RSIR/CSIR	N	75	125	**	**	175
C-BZN110L0*	1/7	LBP	5.20	142	170	485	580	1.20	1.24	4.10	4.23	RSIR/CSIR	N	75	125	**	**	175
C-BZN120L0*	1/6	LBP	5.70	156	190	532	648	1.23	1.25	4.20	4.27	RSIR/CSIR	N	75	125	**	**	188
C-BZN140L0*	1/6	LBP	6.08	170	194	580	662	1.25	1.27	4.27	4.33	RSIR/CSIR	N	75	125	**	**	188
C-BZN150L0*	1/5	LBP	6.65	192	232	655	792	1.27	1.29	4.33	4.40	RSIR/CSIR	N	75	125	**	**	188
C-BZN175L0*	1/5	LBP	7.24	210	247	717	843	1.30	1.31	4.44	4.47	RSIR/CSIR	FIO	75	125	**	**	195
C-BZN200L0*	1/4	LBP	8.37	242	295	826	1,007	1.32	1.33	4.50	4.54	RSIR/CSIR	FIO	75	125	**	**	195
C-BZN225L0*	1/3	LBP	9.03	261	318	891	1,086	1.33	1.35	4.54	4.61	RSIR/CSIR	FIO	75	125	**	**	198
C-BZN250L0*	1/3	LBP	9.82	284	346	969	1,181	1.33	1.35	4.54	4.61	RSIR/CSIR	FIO	75	125	**	**	198
100V / 50Hz., 115-127V / 60Hz.																		
C-BZN100L2*	1/8	LBP	4.50	109	131	372	447	1.14	1.19	3.89	4.06	RSIR/CSIR	N	100	125	**	**	175

C-B Type

28

Private Picture Copyright: WWW.MBSM.PRO

# Mbsm.pro, PDF, compressor, C-BZN200L6X, 1/4 hp, LBP, 826 btu

C-QH40L6*	1/19	LBP	2.77	46	54	157	183	1.30	1.34	4.44	4.57	RSCR	N	**	**	3-5	350	167
C-QH50L6*	1/15	LBP	3.58	59	69	203	237	1.30	1.34	4.44	4.57	RSCR	N	**	**	3-5	350	177
C-QH60L6*	1/12	LBP	3.92	65	76	222	260	1.33	1.35	4.54	4.61	RSCR	N	**	**	3-5	350	177
C-QH75L6*	1/10	LBP	4.36	72	85	247	289	1.33	1.35	4.54	4.61	RSCR	N	**	**	3-5	350	177

C-B Type

Models	Power (HP)	App.	Disp. (cc)	Cooling (w)		Cooling (Btu)		COP (w/w)		EER (Btu/w)		Motor type	Cooling Type	Start Cap		Run Cap		Dim.
				50 Hz	60 Hz	50 Hz	60 Hz	50 Hz	60 Hz	50 Hz	60 Hz			mF	vac	mF	vac	
<b>C-BZN Series (Standard Performance)</b>																		
<b>R134a</b>																		
100V / 50Hz, 60Hz.																		
C-BZN100L0*	1/8	LBP	4.50	109	131	372	447	1.14	1.19	3.89	4.06	RSIR/CSIR	N	75	125	**	**	175
C-BZN110L0*	1/7	LBP	5.20	142	170	485	580	1.20	1.24	4.10	4.23	RSIR/CSIR	N	75	125	**	**	175
C-BZN120L0*	1/6	LBP	5.70	156	190	532	648	1.23	1.25	4.20	4.27	RSIR/CSIR	N	75	125	**	**	188
C-BZN140L0*	1/6	LBP	6.08	170	194	580	662	1.25	1.27	4.27	4.33	RSIR/CSIR	N	75	125	**	**	188
C-BZN150L0*	1/5	LBP	6.65	192	232	655	792	1.27	1.29	4.33	4.40	RSIR/CSIR	N	75	125	**	**	188
C-BZN175L0*	1/5	LBP	7.24	210	247	717	843	1.30	1.31	4.44	4.47	RSIR/CSIR	FIO	75	125	**	**	195
C-BZN200L0*	1/4	LBP	8.37	242	295	826	1,007	1.32	1.33	4.50	4.54	RSIR/CSIR	FIO	75	125	**	**	195
C-BZN225L0*	1/3	LBP	9.03	261	318	891	1,086	1.33	1.35	4.54	4.61	RSIR/CSIR	FIO	75	125	**	**	198
C-BZN250L0*	1/3	LBP	9.82	284	346	969	1,181	1.33	1.35	4.54	4.61	RSIR/CSIR	FIO	75	125	**	**	198
100V / 50Hz., 115-127V / 60Hz.																		
C-BZN100L2*	1/8	LBP	4.50	109	131	372	447	1.14	1.19	3.89	4.06	RSIR/CSIR	N	100	125	**	**	175

C-B Type

28

Private Picture Copyright: WWW.MBSM.PRO



Private Picture Copyright: WWW.MBSM.PRO

Mbsm\_dot\_pro\_private\_PDF\_C-BZN200L6XTélécharger

## Mbsm.pro, PDF, GFF86AA, 1/3H,P R134A, LBP, SIBERIA, COMPRESSOR

Category: Files

written by www.mbsm.pro | 13 May 2022

**OTHER INFORMATION**

COMPARISON CHART			
MOTECH	POWER	EMBRACO	TECUMSEH
GFF93AA	1/3+ HP	FFI 12 HBK	TPH1410Y
GFF86AA	1/3 HP	EGAS 100 HLR	TPH1410Y
		EGAS 90 HLR	-
GFF75AA	1/4+ HP	EGAS 80 HLR	TSB1390Y
GFF66AA	1/4 HP	EGAS 80 HLR	TSB1380Y
GFF57AA	1/5 HP	-	TSB1374Y
		EGAS 70 HLR	TSB1355Y
		EMI 70 HER	THG1358Y
		EMIS 70 HLR	TSB1360Y

Private Picture Copyright: WWW.MBSM.PRO

Mbsm.pro, PDF, GFF86AA, 1/3H,P R134A, LBP, SIBERIA, COMPRESSOR

## Mbsm.pro, Compressor, LX72LAT, 1/4

# hp, LX Capacity, 7.2 cc, R134a, LBP, 220-240V,50Hz 220V,60Hz, CSIR, PTC

Category: compressor

written by www.mbsm.pro | 13 May 2022

:LBP

Series	Model	Motor Type	Voltage/ Frequency	Performance					Test Condition	Dimension Height
				Capacity			EER	COP		
				V/Hz	Kcal/hr	Btu/Whr	Watts	Btu/Whr		W/W
	LX67LABM	RSCR	220/50	155	615	180	4.81	1.41	ASHRAE	200
	LX67LHBM	RSCR	220/50	155	615	180	4.02	1.18	ASHRAE	203
	LX72LATG	RSIR	220-240/50	170	675	198	4.24	1.24	ASHRAE	200
	LX72LBEG	RSIR	220-240/50	170	675	198	4.38	1.28	ASHRAE	200
	LX72LAAM	RSCR	110/50	170	675	198	4.30	1.26	ASHRAE	200
	LX72LATF	CSIR	220-240/50	170	675	198	4.24	1.24	ASHRAE	200
	LX72LATH	CSR	220-240/50	170	675	198	4.30	1.26	ASHRAE	200
	LX72LAEM	RSCR	220-240/50	172	683	200	4.50	1.32	ASHRAE	200
	LX72LHJH	CSR	220/50	172	683	200	4.24	1.24	ASHRAE	203
	LX72LHJM	RSCR	220/50	172	683	200	4.24	1.24	ASHRAE	203
	LX72LHJF	CSIR	220/50	172	683	200	3.80	1.11	ASHRAE	203
	LX67LAQG	RSIR	100-115/60	187	742	217	4.19	1.23	ASHRAE	200
	LX86LABM	RSCR	220/50	194	770	226	4.84	1.42	ASHRAE	203
	LX86LBEG	RSIR	220-240/50	194	770	226	4.30	1.26	ASHRAE	200
	LX86LBEF	CSIR	220-240/50	194	770	226	4.30	1.26	ASHRAE	200
	LX86LBEF	RSIR	220-240/50	194	770	226	4.30	1.26	ASHRAE	200

Private Picture Copyright : WWW.MBSM.PRO

Mbsm.pro, Compressor, LX72LAT, 1/4 hp, LX Capacity, 7.2 cc, R134a, LBP, 220-240V,50Hz 220V,60Hz, CSIR, PTC

# Mbsm.pro, compressor, erue70hlp, Embraco, 1/5 hp, lbp, r134a

Category: compressor

written by www.mbsm.pro | 13 May 2022



Private Picture Copyright : [WWW.MBSM.PRO](http://WWW.MBSM.PRO)

Mbsm.pro, compressor, erue70hlp, Embraco, 1/5 hp, lbp, r134a

---

Mbsm.pro, Freeser, Ariston, ECH240s1, 240 L, Compressor, TECUMSEH BRASIL, THb1355y, 1/5 hp, LBP, R134A, 100g, replaced by, egm70af, gl70aa,

# capillarie 0.026, 1.2 m, Alert -10

Category: Archivation,compressor,expertise,Freezer  
written by [www.mbsm.pro](http://www.mbsm.pro) | 13 May 2022



● ○ REDMI NOTE 9  
WWW.MBSM.PRO IMAGE

2022/5/6 01:50

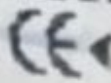
Private Picture Copyright: [WWW.MBSM.PRO](http://WWW.MBSM.PRO)

Mbsm.pro, Freezer, Ariston, ECH240s1, 240 L, Compressor, TECUMSEH BRASIL, THb1355y, 1/5 hp, LBP, R134A, 100g, replaced by, egm70af, gl70aa, capillarie 0.026, 1.2 m, Alert -10

## Mbsm.pro, Compressor, EG70HLR, Embraco, Refrigerator, 1/4 hp, Lbp, R134, Eg 70 Hlr

Category: Archivation,compressor  
written by [www.mbsm.pro](http://www.mbsm.pro) | 13 May 2022

Embraco EG 70HLR



OVERHEAT PROTECTED

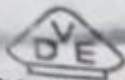
220-240V

13.3 LRA

50Hz

R 134a

1 PH



WIMMELLE-RO  
MADE IN BRAZIL



513700055 FAB 1 29-SEP-02 JQ3NB46P



Mbsm.pro, Compressor, EG70HLR, Embraco, Refrigerator, 1/4 hp, Lbp, R134, Eg 70 Hlr

---

Mbsm.pro, All Compressor in one file,  
r134a/R404a/R507/r600a/r22/r410a  
compressors Cubigel, lbp, hbp, hmbp,  
LeeK , Daikin, Copeland ZP, Danfoss  
MLZ series, InvoTech for air-  
conditioning, Semi-hermetic  
compressors, Rotary compressors for  
air-conditioning

Category: Archivation,compressor  
written by [www.mbsm.pro](http://www.mbsm.pro) | 13 May 2022



Private Picture Copyright: [WWW.MBSM.PRO](http://WWW.MBSM.PRO)

Mbsm.pro, All Compressor in one file, r134a/R404a/R507 compressors Cubigel, lbp, hbp, hmbp, LeeK, Daikin, Copeland ZP, Danfoss MLZ series, InvoTech for air-conditioning, Semi-hermetic compressors, Rotary compressors for air-conditioning