

Siberia GFF57AA Compressor

Category: Refrigeration

written by www.mbsm.pro | 1 February 2026



Private Picture Copyright : WWW.MBSM.PRO

The Siberia GFF57AA is a high-performance 1/5 HP hermetic reciprocating compressor designed for Low Back Pressure (LBP) applications. Utilizing R134a refrigerant and a 5.7cc displacement, it provides a reliable cooling capacity of 166W. This unit is widely used in domestic freezers and refrigerators, offering a robust RSIR motor for 220-240V 50Hz electrical systems.

The Cooling Workhorse: Deep Dive into

the Danfoss NL7.3FT Compressor

Category: Refrigeration

written by www.mbsm.pro | 1 February 2026



Private Picture Copyright : WWW.MBSM.PRO

The Danfoss NL7.3FT is a cornerstone of domestic and light commercial refrigeration. Engineered for Low Back Pressure (LBP) applications using R134a refrigerant, this 1/4 HP unit offers reliability and high efficiency. In this guide, we break down the technical displacement, cooling capacity, and provide a comprehensive list of compatible replacements to ensure your cooling systems stay operational.

MAQ QD168H, Can this compressor be installed in a 1.5-meter two-door refrigerator?

Category: Refrigeration

written by www.mbsm.pro | 1 February 2026



Private Picture Copyright : WWW.MBSM.PRO

The MAQ QD168H is a high-performance 1/4 HP hermetic compressor designed for R134a refrigerant systems. Ideal for domestic refrigerators and freezers, it offers a cooling capacity of approximately 195W. This article provides a deep dive into its electrical characteristics, displacement, and compatible replacements to ensure a professional and efficient cooling system repair or build.

MAQ QD168H, Can this compressor be installed in a 1.5-meter two-door refrigerator?

Category: Refrigeration

written by www.mbsm.pro | 1 February 2026



Private Picture Copyright : WWW.MBSM.PRO

The MAQ QD168H is a high-performance 1/4 HP hermetic compressor designed for R134a refrigerant systems. Ideal for domestic refrigerators and freezers, it offers a cooling capacity of approximately 195W. This article provides a deep dive into its electrical characteristics, displacement, and compatible replacements to ensure a professional and efficient cooling system repair or build.

Mbsm.pro, Copeland Compressor RS80C1E-CAZ-252, 1 HP, R134a Refrigerant, 220-240V Single Phase 50Hz, RSIR Motor, LBP Low Temperature Freezing Application, Hermetic Reciprocating Technology

Category: compressor

written by www.mbsm.pro | 1 February 2026



Private Picture Copyright : WWW.MBSM.PRO

The Copeland RS80C1E-CAZ-252 represents a specialized hermetic reciprocating compressor engineered for low-temperature refrigeration applications where reliability meets efficiency. This single-phase unit operates on R134a refrigerant and delivers consistent performance in demanding freezing environments ranging from -30°C to -10°C evaporating temperatures. Operating at 220-240V single-phase 50Hz power supply, this unit draws approximately 5 amperes during normal operation, making it suitable for standard commercial electrical systems.

TEE NTU 170 MT Compressor 1/4 HP R600a

Category: Refrigeration

written by www.mbsm.pro | 1 February 2026



Private Picture Copyright : WWW.MBSM.PRO

The TEE NTU 170 MT is a high-efficiency hermetic reciprocating compressor designed for low back pressure applications using R600a refrigerant. Known for its reliability in household refrigeration, this unit operates at 220-240V 50Hz. This article explores its technical specs, cooling capacity, and suitable replacements for HVAC technicians and engineers worldwide.

ML90FB , CUBIGEL , R404A / R507, LBP, COMPRESSEUR HERMÉTIQUE , 1/3HP, 230V 50Hz

Category: Technologie, Tester ok

written by www.mbsm.pro | 1 February 2026



Private Picture : www.MBSM.PRO

ML90FB ,CUBIGEL ,R404A / R507, LBP, COMPRESSEUR HERMÉTIQUE ,1/3HP, 230V 50Hz

WHIRLPOOL , COMPRESSEUR R600 ,1/8 HP
, HKK80AA, LBP Compressor, Top
Efficiency , 220-240V 50Hz

Category: Technologie,Tester ok

written by www.mbsm.pro | 1 February 2026





PictureS Mbsm Dot Pro : www.mbsm.pro

WHIRLPOOL , COMPRESSEUR R600 ,1/8 HP , HKK80AA

R600a • 220-240 V • 50 Hz • KAPPA

Compressor	Code number	Application	CECOMAF Capacity [W] T _c =55°C, T _{liq} =55°C, T _{suc} =32°C Evaporating temperature [°C]						CECOMAF						ASHRAE Capacity [W] T _c =54.4°C, T _{liq} =32.2°C, T _{suc} =32.2°C Evaporating temperature [°C]					
									LBP rating point -25°C / 55°C		MBP rating point -10°C / 55°C		HBP rating point 5°C / 55°C							
			-35	-15	-5	0	10	15	Cooling capacity	COP	Cooling capacity	COP	Cooling capacity	COP	-35	-15	-5	0	10	15
									[W]	[W/W]	[W]	[W/W]	[W]	[W/W]						
HMK80AA	15950000	LBP	55	170				102	1.18	211	1.68							67	207	
HMK95AA	15460700	LBP	67	207				125	1.20	257	1.72							81	253	
HMK12AA	16236200	LBP	82	239				149	1.21	292	1.66							100	291	
HTK55AA	16122700	LBP	32	119				69	1.20	150	1.79							39	146	
HTK70AA	16106100	LBP	44	150				87	1.26	185	1.85							54	182	
HTK80AA	16068300	LBP	55	170				102	1.26	212	1.83							67	207	
HTK95AA	16068200	LBP	71	207				126	1.29	258	1.82							86	252	
HTK12AA	16111600	LBP	82	239				149	1.29	292	1.77							100	291	
HKK55AA	16124400	LBP	32	120				69	1.37	150	2.00							39	146	
HKK70AA	16124500	LBP	44	148				87	1.40	186	1.98							54	181	
HKK80AA	16072100	LBP	55	170				102	1.40	212	1.99							67	207	
HKK95AA	16049700	LBP	69	207				126	1.42	256	1.95							84	252	
HKK12AA	16065900	LBP	82	239				149	1.42	292	1.93							100	291	
HXX55AA	15650400	LBP	36	122				72	1.45	152	2.00							44	149	
HXX70AA	15690400	LBP	47	149				88	1.47	186	2.02							57	181	
HXX80AA	15621800	LBP	58	173				105	1.50	214	2.05							71	210	
HXX95AA	15592900	LBP	73	209				129	1.51	258	2.05							89	255	
HXX12AA	15593100	LBP	83	245				152	1.50	300	2.04							101	299	
HZK95AA	16313100	LBP	73	208				128	1.58	257	2.15							89	254	

PictureS Mbsm Dot Pro : www.mbsm.pro

Mbsm.pro, ATA72XL, Lbp compressor, HuaGuang coolant, R134a, 220-240V 50/60Hz, 1/4HP, 1PH, 205 w, Lbp

Category: Solutions, Tester ok
written by Jamila | 1 February 2026



PictureS Mbsm Dot Pro : www.mbsm.pro

Mbsm.pro , ATA72XL , compressor , HuaGuang coolant , R134a , 220-240V 50/60Hz ,
1/4HP , 1PH

Détails rapides

Lieu d'origine:
Guangdong, Chine

Marque:
Wanbao

Type:
Compresseur de réfrigération

Application:
Pièces de réfrigération

Certification:
ce, CCC / CB / VDE

Réfrigérant:
R134A

Marque:
Wanbao

Tension:
220-240V 50HZ

Déplacement:
72 cm³

Refroidissement:
ST / OC

Type de moteur:
RSIR

Capacité de refroidissement:
185 W

Capacité:
631 BTU

Max. Hauteur "A":
188

Wanbao Group Compressor Co., Ltd (anciennement connue sous le nom de Guangzhou Refrigeration Company Ltd, ci-après dénommée The Co.), a commencé sa production en 1987, est le premier fabricant à introduire une technologie et des équipements étrangers pour la production à grande échelle de compresseurs de réfrigérateurs en Chine . En 2014, The Co. a acquis le fabricant de compresseurs de réfrigérateurs à l'étranger-Italie ACC, puis a fondé l'italien Wanbao-ACC Co., Ltd. Cette action améliore le compresseur Wanbao de l'internationalisation du marché à l'internationalisation de la fabrication et jette des bases solides à l'internationalisation de la marque pour la prochaine étape.

La Co.a quatre bases de production à Guangzhou, Qingdao, Hefei et en Italie, avec une capacité de production annuelle de 26 millions d'unités, forgeant ainsi une configuration mondiale stratégique couvrant les principaux clients nationaux et étrangers. Wanbao Chine approvisionne principalement les grands fabricants de réfrigérateurs nationaux, y compris Haier, Hisense, Midea, Meiling, etc., ainsi que les fabricants d'appareils électroménagers de renommée internationale, y compris Electrolux Whirlpool, etc., en tant que fournisseur mondial. Wanbao-ACC Italy est un fournisseur majeur de fabricants européens d'appareils électroménagers haut de gamme.

Modèle	Réfrigérant	Tension	Capacité de refroidissement (w)	Application	COP (w / w)
AS43	R134a	220V / 50Hz	84	LBP	0,94
AS51	R134a	220V / 50Hz	107	LBP	1,01
ASD43K	R134a	220V / 50Hz	117	LBP	1.13
ASD53K	R134a	220V / 50Hz	144	LBP	1.2
ASD65	R134a	220V / 50Hz	173	LBP	1,23
ATA72X	R134a	220V / 50Hz	205	LBP	1,35
ATA80X	R134a	220V / 50Hz	230 1/4 hp++	LBP	1,35
ANA90	R134a	220V / 50Hz	255	LBP	1,35
AQAW110R	R134a	220V / 50Hz	260	LBP	1,15
ANA120	R134a	220V / 50Hz	345	LBP	1,3

Autre compresseur de congélateur wanbao que nous avons:

Pas	HP	Modèle	Réfrigérant	Qté/Une Palette
1	1/10HP	ASD35K	R134a	100
2	1/6HP	ASD53K	R134a	80
3	1/5HP	AQAW66X	R134a	80
4	1/4HP	AQAW77X	R134a	80
5	1/4HP Gros	AQAW91	R134a	80
6	1/3HP	AQAW110	R134a	80
7	3/8HP	AL120	R134a	80
8	1/2HP	AL150	R134a	80
9	1/2HP, grand	AL180	R134a	80

型号 Model	气缸容积 Displacement	冷却方式 Cooling	电机类型 Motor Type	制冷量 Cooling Capacity				COP			认证 Certification	最大高度 "A" Max. Height "A"
				ASHRAE		CECOMAF	ASHRAE		CECOMAF			
				-23.3℃		-25℃	-23.3℃		-25℃			
				W	Btu	W	W/W	EER	W/W			
LBP												
220-240V 50HZ R134a												
T系列 T Series												
ATA72X	7.2	ST/OC	RSIR	205	699	155.3	1.35	4.6	1.05	CCC/CB/VDE	185/188	
ATA80X	8.1	ST/OC	RSIR	230	785	174.2	1.35	4.6	1.05	CCC/CB	185/188	
ATK72X	7.2	ST/OC	RSCR	205	699	154.0	1.40	4.8	1.09	CCC/CB/VDE/CE	185/188	
ATK80X	8.1	ST/OC	RSCR	230	785	174.0	1.40	4.8	1.09	CCC/CB	185/188	
▲ATD50V	5.0	ST	RSIR	140	478	105.2	1.25	4.3	0.98	CCC/CB	182	
ATD66X	6.6	ST/OC	RSIR	190	648	142.8	1.25	4.3	0.98	CCC/CB	182	
△ATA50K	5.0	ST	RSIR	144	491	108.9	1.35	4.6	1.05	CCC/CB	182/185	
△ATA66K	6.6	ST	RSIR	190	648	142.8	1.25	4.3	0.98	CCC/CB	182	
ATA66K(OC)	6.6	OC	RSIR	190	648	143.7	1.35	4.6	1.05	CCC/CB	188	
ATA72K(OC)	7.2	OC	RSIR	205	699	154.0	1.35	4.6	1.05	CCC/CB	188	
ATK55	5.5	ST	RSCR	160	546	121.0	1.35	4.6	1.05	CCC/CB	185	
ATK60	6.0	ST	RSCR	180	614	135.0	1.51	5.2	1.18	CCC/CB/CE	185	
ATK66	6.6	ST	RSCR	192	655	144.0	1.55	5.3	1.21	CCC/CB/CE	185	

Private Picture Copyright : WWW.MBSM.PRO

Mbsm_dot_pro_private_PDF_ATA72X-220-240V_50HZ_R134A-1Télécharger



Picture5 Mbsm Dot Pro : www.mbsm.pro

Private Picture Copyright : WWW.MBSM.PRO



REDMI NOTE 8T
AI QUAD CAMERA

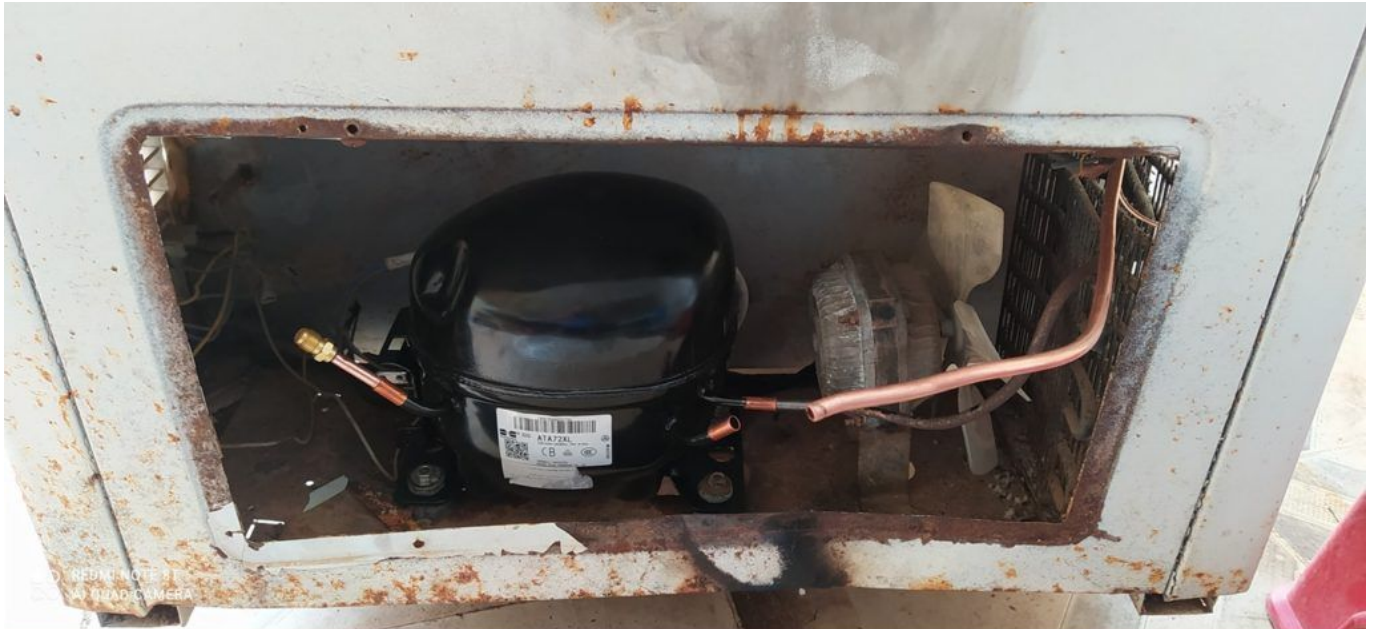


Private Picture Copyright : WWW.MBSM.PRO



Private Picture Copyright : WWW.MBSM.PRO





REDMI NOTE 11
48MP QUAD CAMERA

Private Picture Copyright : WWW.MBSM.PRO