

# Whirlpool, Aspera, NE2125E, LBP, capacitive, start inductive run, hermetic compressor, R22, 1/4Hp++ or 1/3Hp-

Category: compressor

written by [www.mbsm.pro](http://www.mbsm.pro) | 18 March 2021



Private Picture Copyright: [WWW.MBSM.PRO](http://WWW.MBSM.PRO)

ompressor Aspera NE2125E, LBP – R22, 220-240V / 1 / 50Hz, stroke volume 8.78 cm<sup>3</sup>, LRA 11.0A, motor type CSIR, capillary tube / expansion valve operation, oil AB 46.Cooling

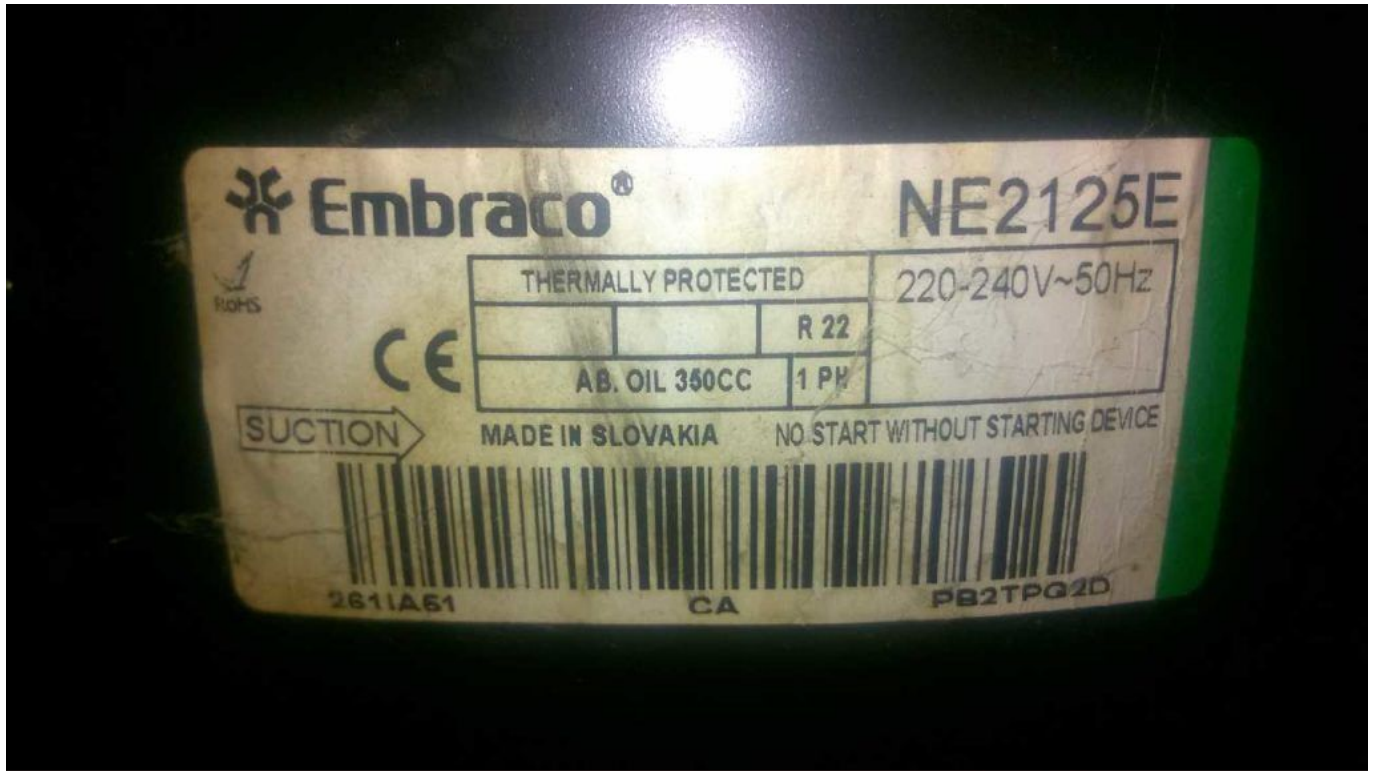
capacity measured for condensation temperature of: 45 ° C, Measurement conditions: ASHRAE

Unfortunately the compressor is no longer available.

If you would like an offer for an identical alternative, please email us or give us a short call, we will prepare an offer for you.Cooling capacity (W) at To

– 10 ° C – 15 ° C – 20 ° C – 25 ° C – 30 ° C

651      517      401      304      226



Private Picture Copyright : [WWW.MBSM.PRO](http://WWW.MBSM.PRO)

### R22 - LBP Applications

COMPRESSOR	FREQUENCY	DIMENSION	
		(from -30°C to -5°C evap. temp.)	-
NE2125E	50 Hz	0.91 mm I.D. × 3.2 m	-
	60 Hz	0.91 mm I.D. × 2.85 m	-
NE2134E	50 Hz	0.91 mm I.D. × 2.8 m	-
	60 Hz	0.91 mm I.D. × 2.5 m	-
T2140E	50 Hz	0.91 mm I.D. × 2.6 m	-
	60 Hz	0.91 mm I.D. × 2.3 m	-
T2155E	50 Hz	1.20 mm I.D. × 3.9 m	-
	60 Hz	1.20 mm I.D. × 3.5 m	-
T2168E	50 Hz	1.20 mm I.D. × 3.3 m	-
	60 Hz	1.20 mm I.D. × 2.8 m	-
NJ2178E	50 Hz	1.20 mm I.D. × 3.0 m	-

PictureS Mbsm Dot Pro : [www.mbsm.pro](http://www.mbsm.pro)

Private Picture Copyright : [WWW.MBSM.PRO](http://WWW.MBSM.PRO)



Private Picture Copyright : [WWW.MBSM.PRO](http://WWW.MBSM.PRO)



Private Picture Copyright : [WWW.MBSM.PRO](http://WWW.MBSM.PRO)



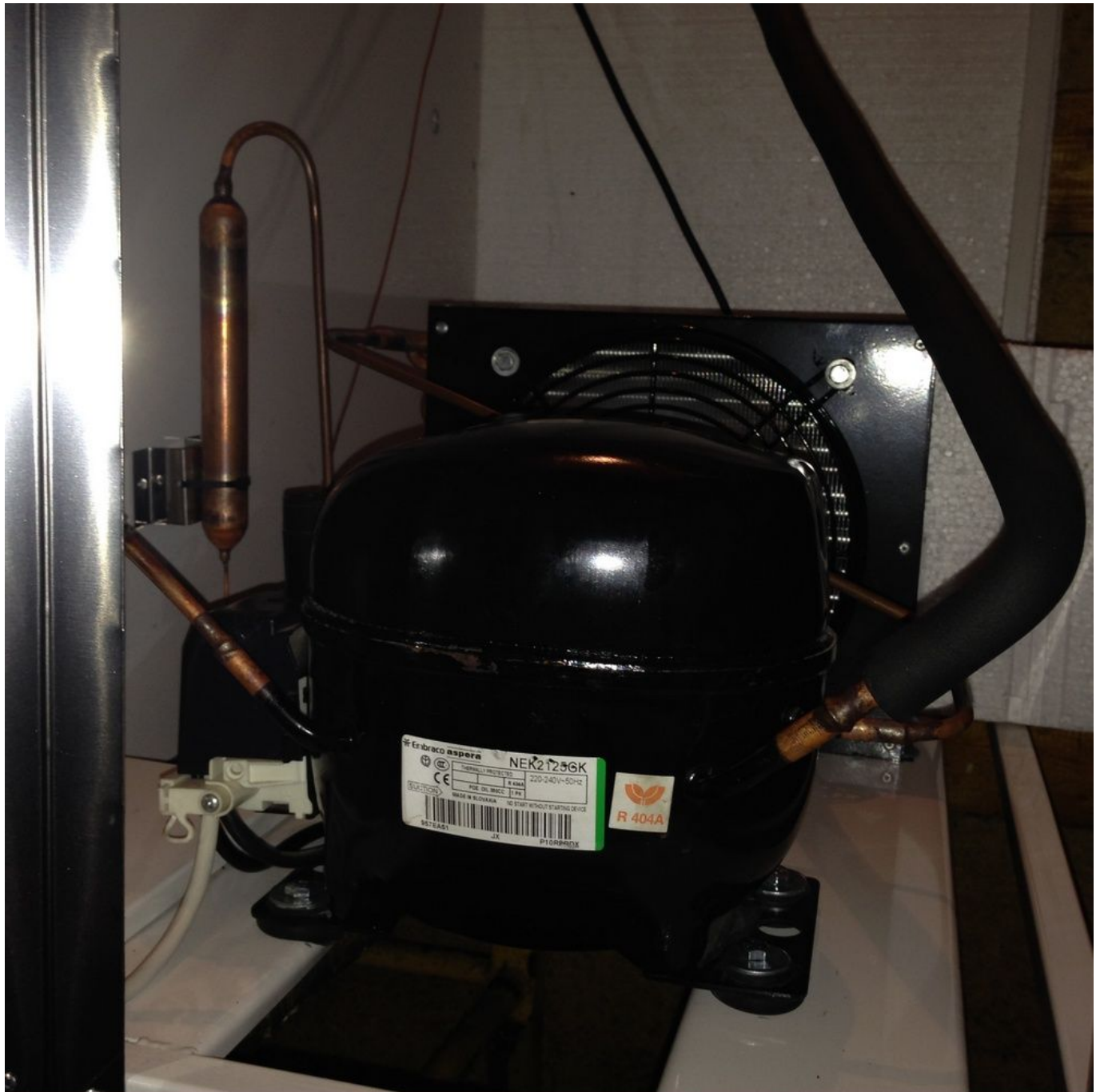
Private Picture Copyright : [WWW.MBSM.PRO](http://WWW.MBSM.PRO)



Private Picture Copyright : [WWW.MBSM.PRO](http://WWW.MBSM.PRO)









Private Picture Copyright: [WWW.MBSM.PRO](http://WWW.MBSM.PRO)

Mbsm\_dot\_pro\_private\_PDF\_ne2125e-Embraco\_VerdichterTélécharger

<b>Shipping Class</b>	Default
<b>Scope Of Application</b>	LBP
<b>Delivery Time</b>	2-3 Weeks
<b>Stock Availability</b>	In Stock
<b>Type</b>	Reciprocating Piston
<b>Condensation Temperature</b>	45 ° C
<b>Manufacturer</b>	Aspera
<b>Manufacturer No.</b>	NE2125E
<b>Power In Hp</b>	1/4 +
<b>Starting Torque</b>	HST
<b>Stroke Volume In Cm3</b>	8.78
<b>Measurement Conditions</b>	Ashrae
<b>Refrigerant</b>	R22
<b>Oil Type</b>	IS046
<b>Series</b>	NE
<b>Condensing Units Compressors</b>	Compressor

Tension	220-240V
Weight In Kg	10.4

---

Mbsm.pro, Donper, Hermetic,  
Compressor , R600a, Lj126Cy,  
lu126cy1, 1/3 Hp, R600a

Category: compressor

written by [www.mbsm.pro](http://www.mbsm.pro) | 18 March 2021



Private Picture Copyright : [WWW.MBSM.PRO](http://WWW.MBSM.PRO)

Mbsm.pro, Donper, Hermetic, Compressor , R600a, Lj126Cy, lu126cy1, 1/3 Hp, R600a

FR6B, Compressor, 103U2654, FR6B  
 103U2654, DANFOSS TL, FR and SC  
 Hermetic Compressors, DANFOSS,  
 Kiriazi, 343L, 1/5 Hp, MBP, R12,  
 280g, équivalence, 1/4Hp, R134A, 190g

Category: compressor

written by www.mbsm.pro | 18 March 2021



Private Picture Copyright : WWW.MBSM.PRO

Compresseurs hermétiques DANFOSS TL, FR et SC

BOC partie No.	Code Danfoss	Puissance nominale et applic	Refrig.	Capacité nominale (watts)	Réf. BOC	Code Danfoss	Puissance nominale et applic	Réfrigérer	Capacité nominale (watts)
FR6B	103U2654	1/5 MBP	R12	354	TL3F	102G4300	1/10 LBP	R134a	58
FR8.5B	103U2854	1/4 MBP	R12	450	TL4F	102G4400	1/8 LBP	R134a	84
SC10B *	104L2510	1/3 MBP	R12	588	TL55F	102G4520	1/6 LBP	R134a	127
FR11B	103U2154	1/3 MBP	R12	624	TL57F	102G4720	1/5 LBP	R134a	162
SC12B *	104L2670	4/9 MBP	R12	756	NL7F	105G6706	1/4 LBP	R134a	183
SC15B *	104L2830	1/2 MBP (LBP)	R12 (R502)	912 (768)	NL9F **	105G6802	1/4 LBP	R134a	214
SC18B *	1042110	2/3 MBP (LBP)	R12 (R502)	1044 (900)	NL11F **	105G6910	1/4 LBP	R134a	274
SC21B	104L2310	3/4 MBP	R12	1212	SC15F **	104G8500	1/3 LBP	R134a	319
SC10B	104L2510	1/3 LBP	R502	468	SC18F **	104G8800	4/9 LBP	R134a	395
SC12B	104L2670	4/9 LBP	R502	612	TL3G	104G4350	1/8 MBP	R134a	175
SC15C	104L2832	2/3 LBP	R502	768	TL4G	102G4452	1/6 MBP	R134a	215
SC18C	104L2111	3/4 LBP	R502	900	FR6G	103G6660	1/5 MBP	R134a	351
SC10G	104G8000	1/3 MBP	R134a	591	FR8.5G	103G6780	1/4 MBP	R134a	468

SC12G	104G8240	4/9 MBP	R134a	751	FR11G	103G6980	1/3 MBP	R134a	609
SC18G	104G8820	2/3 MBP	R134a	1059	SC15G	104G8520	1/2 MBP	R134a	892
SC21G	104G8140	3/4 MBP	R134a	1256	SC10CL	104L2523	1/3 MBP	R507	450
SC12CL	104L2623	4/9 LBP	R507	624	SC15CL	104L2853	2/3 LBP	R507	758
SC18CL	104L2123	3/4 LBP	R507	893					

Remarque:

1. Les compresseurs marqués \*\* sont équipés de raccords de refroidisseur d'huile.
2. Les compresseurs marqués \* peuvent être utilisés sur les systèmes R502 avec fonctionnement à tube capillaire dans la gamme LBP.
3. (Systèmes sans dégivrage automatique uniquement).

Capacités nominales basées sur:

LBP = -23,3 ° C température d'évaporation

MBP = -5 ° C température d'évaporation

Relais de remplacement (appareil de démarrage)	
Réf . BOC	Convient au modèle de compresseur
103N0011	TL3A à TL5A, FR7.5A à FR11A
103N0002	SC12A, SC15A





Private Picture Copyright : WWW.MBSM.PRO

FR6B	103 U26 54	1/ 5 M BP	R 1 2	3 5 4	T L 3 F	1 0 2 G 4 3 0 0	1 /	R 1 3 4 a	5 8
------	------------------	--------------------	-------------	-------------	------------------	--------------------------------------	--------	-----------------------	--------

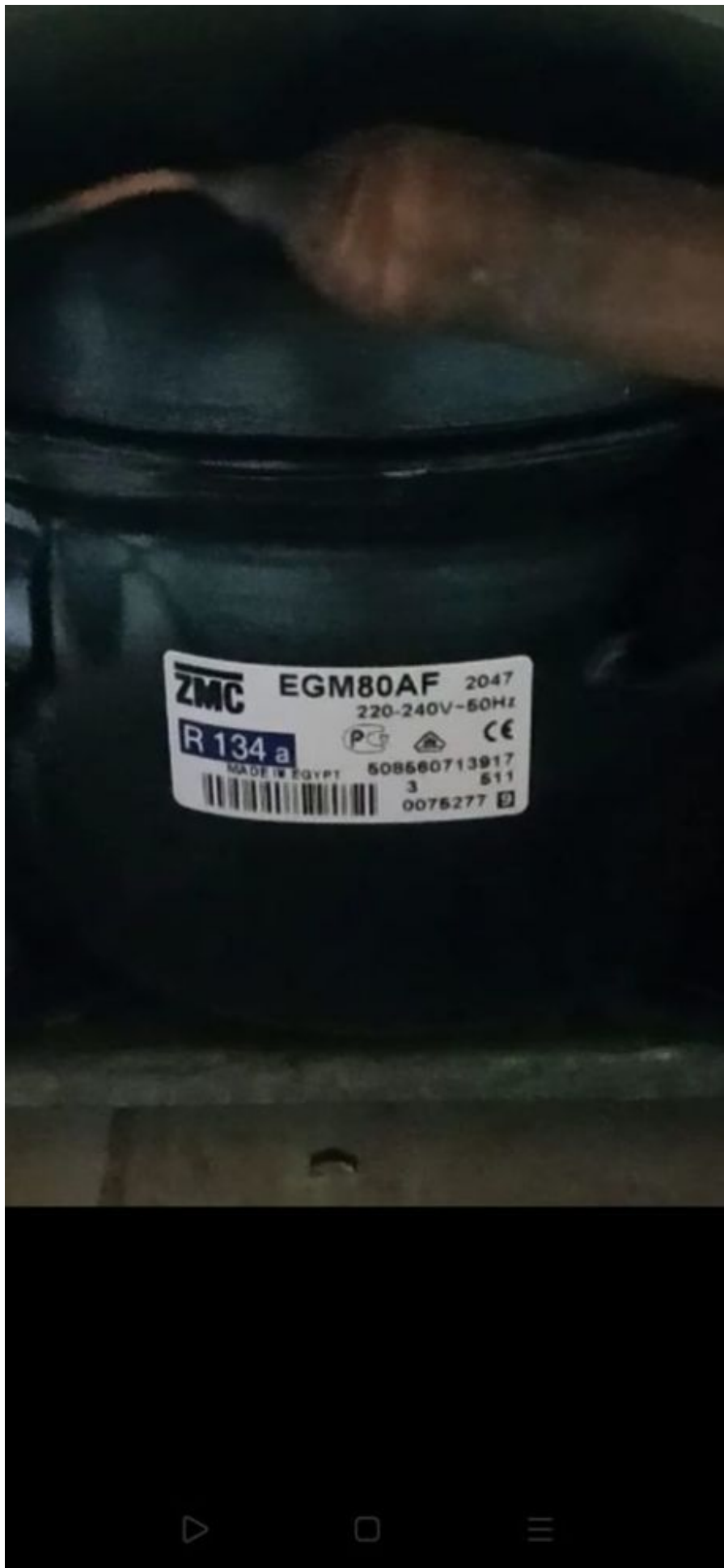


Private Picture Copyright : WWW.MBSM.PRO

Compressor, Frigo, Moteur ZMC, 1/4  
HP, LBP, RSIR / RSCR, GM 80 AF,  
GM80AF, R-134, 198 KCAL, Frigo OCEAN,  
100cm/60cm , Ocean, Made in Egipt,  
Capacity 295 L, Charge 100G

Category: compressor

written by [www.mbsm.pro](http://www.mbsm.pro) | 18 March 2021



# ABOUT ZMC

WE ARE MISR COMPRESSOR MANUFACTURING CO. (MCMC) A COMPANY ESTABLISHED IN 1988, DEDICATED TO MANUFACTURING OF HERMETIC COMPRESSORS FOR HOUSEHOLD AND COMMERCIAL REFRIGERATION INDUSTRY

MODÈLE: EGM80AF      CODE: 508500314016

## Données GENERALES

Réfrigérant:	R134a
Application:	LBP
Plage de température d'évaporation:	-30 ° C à -10 ° C
Tension / Fréquence:	220 / 240V / 50 HZ
Refroidissement du compresseur:	Statique
Périphérique d'extension:	Tube capillaire
Quantité d'emballage:	Multi – 96: 120 pièces
Approbations:	CE-VDE-GOST

## Données mécaniques

Charge d'huile:	350 cm <sup>3</sup>
Configuration du type d'huile:	ester
Viscosité du type d'huile:	19 cSt
Poids:	9,5 kg

## Données électriques

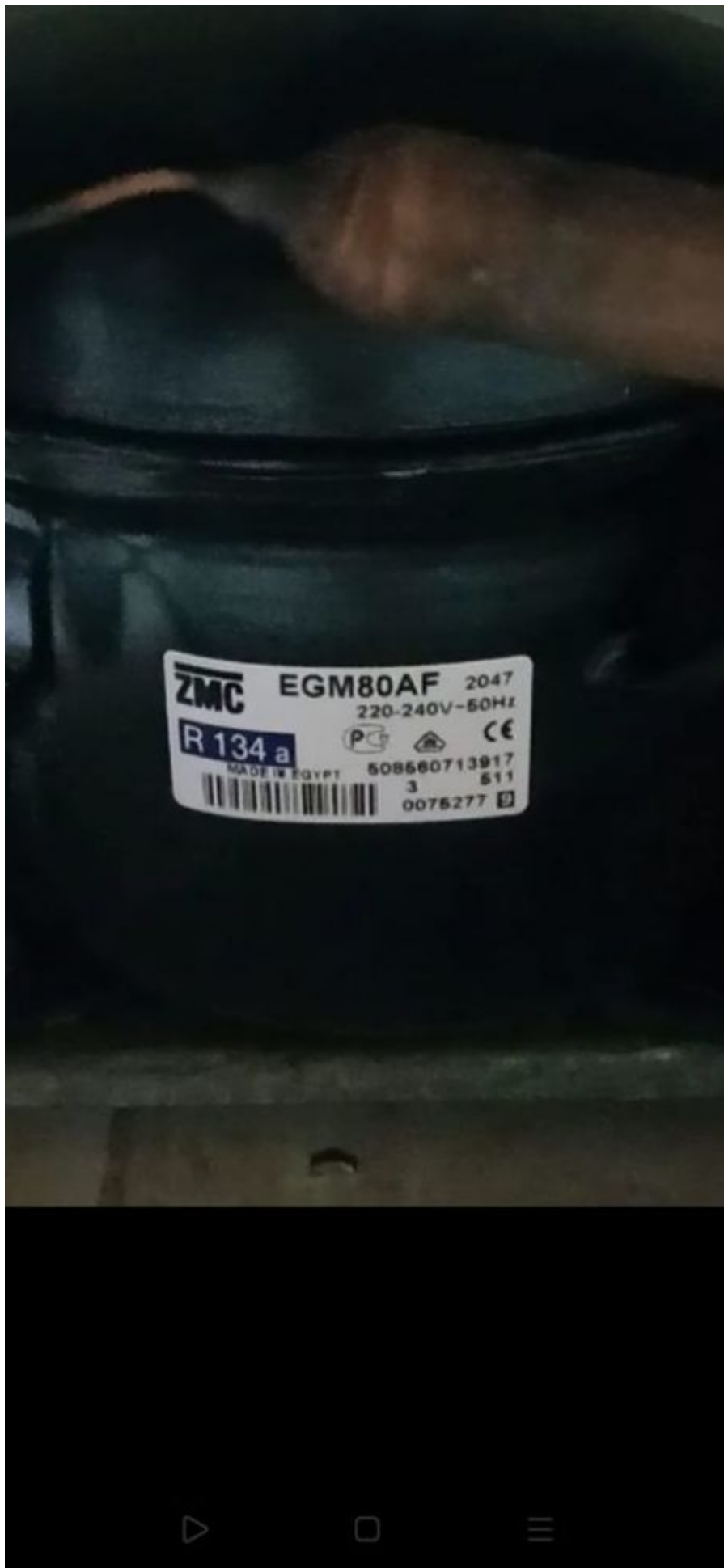
Type de moteur:	RSIR / RSCR *
Plage de travail de tension à 50 Hz:	187-264V
Température maximale du moteur:	130 ° C
Courant de rotor bloqué:	14,43 / 8,50 A
Début de la résistance d'enroulement:	15,80 Ω à 25 ° C
Résistance d'enroulement de course:	10,40 Ω à 25 ° C
Phase:	1 ph

## Caractéristiques externes

Diamètre intérieur	(mm)
Connecteur d'aspiration	6,5
Connecteur de décharge	4,9
Connecteur de processus	6,5
Matériel	Cuivre

## Composants électriques

Dispositif de démarrage:	PTC 14Ω
Protection du moteur:	T0490 / xx



# Ocean

Egyptian Italian Appliances



OCDF29514001035

Product Name. DF295 Silver	Code. DFOC295LSL004	Refrigerant R134A - 0.1 Kg
Voltage. 220-230 V	Motor Input. 1.7 A	50 / 60 Hz
Lamp Power. 15 W	Capacity. 295 L	Class. T
Net Wt. 44 Kg	Gross Wt. 49 Kg	Made in Egypt

**Ocean**

Egyptian Italian for Electrical Appliances



OCDF29514001035

Product Name. DF295 Silver	Code. DFOC295LSL004	Refrigerant R134A-2.1 Kg
Voltage. 220-230 V	Motor Input. 1.7 A	50 / 60 Hz
Leak Power. 15 W	Capacity. 295 L	Class. T
Net Wt. 44 Kg	Gross Wt. 49 Kg	Made in Egypt





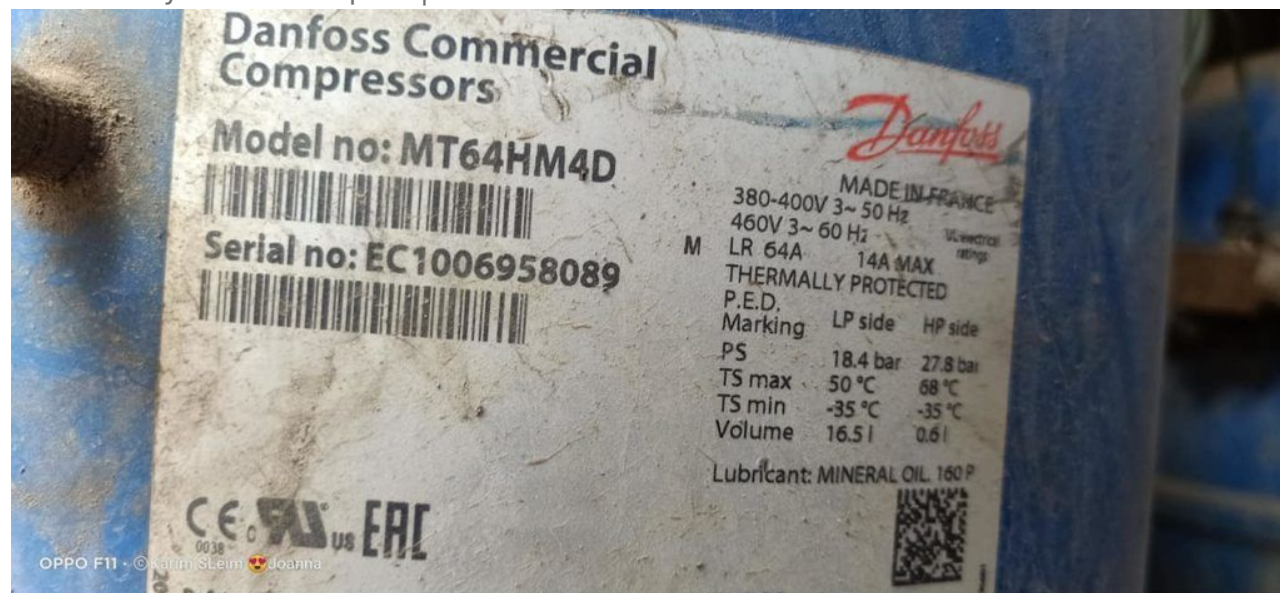
Private Picture Copyright : [WWW.MBSM.PRO](http://WWW.MBSM.PRO)

Mbsm\_dot\_pro\_private\_PDF\_EGM80AFTélécharger

# Danfoss, Reciprocating, compressors, MT / MTZ / NTZ, MT64HM4DVE, R22, 5HP / hp, 3,9KW, 15A

Category: compressor

written by [www.mbsm.pro](http://www.mbsm.pro) | 18 March 2021



Private Picture Copyright: [WWW.MBSM.PRO](http://WWW.MBSM.PRO)

## MT64HM4DVE Compresseur Danfoss Meyo Paramètres détaillés:

Nombre nominal de chevaux: 5HP / hp

Puissance nominale: 3,9KW

Courant de démarrage à rotor bloqué: 67A

Courant de travail: 15A

Cylindrée: 107,71 cm<sup>3</sup> / tr

interface filetée d'aspiration: 1 "3/4

rangée Interface de filetage d'air: 1 "3/4

taille du tuyau d'aspiration: 7/8"

taille du tuyau d'échappement: 3/4 "

vitesse: 2900 tr / min

Poids net: 37 kg

Detailed Product Description

<b>MT Series</b>	R22	<b>Type:</b>	Hermetic
<b>Refrigerant:</b>			Reciprocating
			Compressor
<b>Phase:</b>	1PH,3PH	<b>Applcation</b>	Middle High
<b>Horse Power:</b>	1.5HP To 13.3HP	<b>Temp::</b>	Temperature
<b>Voltage:</b>	380-400 -460V	<b>Frenquency:</b>	50HZ 60HZ
	For Commercial	<b>Colour:</b>	Blue
<b>Usage:</b>	Refrigeration And Air		
	Conditioning		

R22 Danfoss Maneurop Hermetic compressor MT64HM3DVE France Maneurop Piston

## Reciprocating compressor

Danfoss Maneurop NTZ series compressors are hermetic reciprocating type and designed for low evaporating temperature applications. Refrigerant: R404A/R507A  
Model: NTZ048/NTZ068/NTZ096/NTZ108/NTZ136/NTZ215/NTZ...

Danfoss Maneurop MT/MTZ series compressors are hermetic reciprocating type and designed for Medium and High evaporating temperature applications.

Refrigerant: R22, R407C, R134A, R404A

380-400V/3~/50Hz and 460V/3~/60Hz

Models: MT/MTZ018 MT/MTZ022 MT/MTZ028... MT/MTZ320

Danfoss Maneurop MPZ series compressors are hermetic reciprocating type and designed for Medium and High evaporating temperature applications.

Refrigerant: R404A/R507A

Models: MPZ2038/MPZ2048/MPZ2054/MPZ2061/MPZ2068

## Danfoss Maneurop Commercial Hermetic Scroll Compressor MT64HM4DVE

### Specification:

Maneurop MT/MTZ series compressors are of the hermetic reciprocating type and are designed for Medium and high evaporating temperature applications.

There are 26 different models with displacement ranging from 30-543cm<sup>3</sup>/rev.

Our Maneurop compressors are for 50Hz, motor code is 4, can be used for R22/R407C/R134a/R404A/R507

1. Piston /reciprocating type compressors.
2. Voltage is 50Hz
3. The refrigerant are R22/R407C/R134a/R404A/R507
4. There are MT/MTZ series
5. Original from France.
6. Capacity: 1.5HP~13HP, High efficiency, Low noise

1. MT series for R134a

2. MTZ series for R407c/134a

1.50 Hz

2. Imported from France.

3. R22 Rated condition: 50Hz/400V

superheat: 11.1K

subcooling 8.3K condensing temp: 54.4°C

4. R407C Rated condition : 50Hz 400V

superheat: 11.1K

subcooling 8.3K condensing temp: 54.4°C

evaporating temp. 7.2°C

refrigeration and power input ±5%

We can supply more Danfoss compressor models as below:

MODEL (R22)	MODEL (R404A)	NTZ series
MT18-4VM	MTZ18-4VM	NTZ048A4LR1A
MT22-4VM	MTZ22-4VM	NTZ068A4LR1A
MT28-4VM	MTZ28-4VM	NTZ096A4LR1A
MT32-4VM	MTZ32-4VM	NTZ108A4LR1A
MT36-4VM	MTZ36-4VM	NTZ136A4LR1A
MT40-4VM	MTZ40-4VM	NTZ215A4LR1A
MT44-4VM	MTZ44-4VM	NTZ271A4LR1A
MT50-4VM	MTZ50-4VM	□
MT56-4VM	MTZ56-4VM	□
MT64-4VM	MTZ64-4VM	□
MT72-4VM	MTZ72-4VM	□
MT80-4VM	MTZ80-4VM	□
MT100-4VM	MTZ100-4VM	□
MT125-4VM	MTZ125-4VM	□
MT144-4VM	MTZ144-4VM	□
MT160-4VM	MTZ160-4VM	

Model NO.	Nom HP	Displ. Cc/rev	Capacity R404a(w)	
			-10	-5
MTZ18-4VI	1.5	30.2	1580	2110
MTZ18-5VI	1.5	30.2	1580	2110
MTZ22-4VI	1.8	38.12	2270	2920
MTZ22-5VI	1.8	38.12	2270	2920
MTZ28-4VI	2.3	48.06	2880	3720
MTZ28-5VI	2.3	48.06	2880	3720
MTZ32-4VI	2.7	53.86	3230	4220
MTZ32-5VI	2.7	53.86	3230	4220
MTZ36-4VI	3	60.47	3800	4870
MTZ36-5VI	3	60.47	3800	4870
MTZ40-4VI	3.3	67.89	4280	5490
MTZ45-4VI	3.8	76.22	4420	5840
MTZ51-4VI	4.2	85.64	5290	6920
MTZ57-4VI	4.8	96.13	6060	7880
MTZ65-4VI	5.4	107.71	7080	9130
MTZ73-4VI	6.1	120.94	7960	10230
MTZ81-4VI	6.8	135.78	9160	11720
MTZ100-4VI	8.3	171.26	10390	13500
MTZ125-4VI	10.4	215.44	13650	17500
MTZ144-4VI	12	241.87	15740	20120
MTZ160-4VI	13.3	271.55	17690	22520

Compresseur à piston Danfoss Maneurop MT22JC5PVE (2.0HP / 1PH) Compresseur à piston Danfoss Maneurop MT22JC4AVE (2.0HP / 3PH) Compresseur à piston Danfoss Maneurop MT28JC5PVE (2.3HP / 1PH) Compresseur à piston Danfoss Maneurop MT22JC4AVE (2.0HP / 3PH) Compresseur à piston Danfoss Maneurop MT28JC5PVE (2.3HP / 1PH) Compresseur à piston Danfoss Maneurop 3PH (2.3HP / 1PH) 2.6HP / 1PH) Compresseur à piston Danfoss Maneurop MT32JF4DVE (2.6HP / 3PH); Compresseur à piston Danfoss Maneurop MT36JG5CVE (3.0HP / 1PH) Compresseur à piston Danfoss Maneurop MT36JG4FVE (3.0HP / 3PH) Compresseur à piston Danfoss Maneurop

MT40JH4EVE (3.3HP / 3PH) Danfoss Maneurop Compresseur à piston MT36JG4FVE (3.0HP / 3PH) Compresseur à piston Danfoss Maneurop MT40JH4EVE (3.3HP / 3PH) Danfoss Maneurop Compresseur à piston MT36JG4FVE (3.0HP / 3PH) Compresseur à piston Danfoss Maneurop MT40JH4EVE (3.3HP / 3PH) Compresseur à piston Danfoss Maneurop 3KFHB4 (3.6PH) 4.0HP / 3PH) Compresseur à piston Danfoss Maneurop MT56HL4BVE (4. 6HP / 3PH) Compresseur à piston Danfoss Maneurop MT64HM4DVE (5.3HP / 3PH) Compresseur à piston Danfoss Maneurop MT72HN4AVE (6.0HP / 3PH) Compresseur à piston Danfoss Maneurop MT80HP4AVE (6.6HP / 3PH) Compresseur à piston Danfoss Maneurop MT72HN4AVE (6.0HP / 3PH) Compresseur à piston Danfoss Maneurop MT80HP4AVE (6.6HP / 3PH) Compresseur à piston Danfoss Maneurop 4.0 Compresseur à piston MT144HV4AVE (12,0HP / 3PH) Compresseur à piston Danfoss Maneurop MT160HW4EVE (13.3HP / 3PH) Compresseur à piston Danfoss Maneurop MTZ22JC5VE (2.0HP / 1PH); [R134A, R404] Compresseur à piston Danfoss Maneurop MTZ22JC4AVE (2.0HP / 3PH); [R134A, R404] Compresseur à piston Danfoss Maneurop MTZ28JE5AVE (2,3 HP / 1PH); [R134A, R404] Compresseur à piston Danfoss Maneurop MTZ28JE4AVE (2,3 HP / 3PH); [R134A, R404] Compresseur à piston Danfoss Maneurop MTZ32JF5AVE (2,6 CV / 1PH); [R134A, R404] Compresseur à piston Danfoss Maneurop MTZ32JF4BVE (2.6HP / 3PH); [R134A, R404] Compresseur à piston Danfoss Maneurop MTZ36JG5AVE (3.0HP / 1PH); [R134A, R404] Compresseur à piston Danfoss Maneurop MTZ36JG4BVE (3.0HP / 3PH); [R134A, R404] Compresseur à piston Danfoss Maneurop MTZ40JH4AVE (3,3 CV / 3PH); [R134A, R404] Compresseur à piston Danfoss Maneurop MTZ50HK4CVE (4,0 CV / 3PH); [R134A, R404] Compresseur à piston Danfoss Maneurop MTZ56HL4BVE (4,6 CV / 3PH); [R134A, R404] Compresseur à piston Danfoss Maneurop MTZ64HM4CVE (5,3 HP / 3PH); [R134A, R404] Compresseur à piston Danfoss Maneurop MTZ72HN4AVE (6,0 CV / 3PH); [R134A, R404] Compresseur à piston Danfoss Maneurop MTZ80HP4AVE (6,6 CV / 3PH); [R134A, R404] Compresseur à piston Danfoss Maneurop MTZ100HS4VE (8,3 CV / 3 PH); [R134A, R404] Compresseur à piston Danfoss Maneurop MTZ125HU4VE (10.0HP / 3PH); [R134A, R404] Compresseur à piston Danfoss Maneurop MTZ144HV4AVE (12,0 HP / 3PH); [R134A, R404] Compresseur à piston Danfoss Maneurop NTZ048A4LR1A (2.0HP / 3PH); [R134A, R404, R507] Compresseur à piston Danfoss Maneurop NTZ068A4LR1A (3,5 CV / 3PH); [R134A, R404, R507] Compresseur à piston Danfoss Maneurop NTZ096A4LR1A (4,5 CV / 3PH); [R134A, R404, R507] Compresseur à piston Danfoss Maneurop NTZ108A4LR1A (5,0 CV / 3PH); [R134A, R404, R507] Compresseur à piston Danfoss Maneurop NTZ136A4LR1A (6,5 CV / 3PH); [R134A, R404, R507] Compresseur à piston Danfoss Maneurop NTZ215A4LR1A (10,0 HP / 3PH); [R134A, R404, R507] Compresseur à piston Danfoss Maneurop NTZ271A4LR1A (13.0HP / 3PH); [R134A, R404, R507] COMPRESSEUR MANEUROP 2.0HP MT22 MANEUROPE 2.0HP MT22 COMPRESSEUR MANEUROP COMPRESSEUR MTZ-22JE-4VE R404A MANEUROPE 2.30HP MT28JE-5PVE MT28-5VI / MT28-5VM COMPRESSEUR MANEUROP 2.30HP MT28JE-5PVE MT28-5VI / MT28-5VM COMPRESSEUR MANEUROPEUR 2.30H5 / R404A) COMPRESSEUR MANEUROP 2.8HP MTZ32-5VM (R134a / R404A / R507) COMPRESSEUR MANEUROP MT32JF5MVE 2-3 / 4HP ((R22) COMPRESSEUR MANEUROP 3.0HP MT36JG4FVE (MT36-4VI / MT36-4VM) (R22) COMPRESSEUR 3.0HP COMPRESSEUR MT36 MANEUROP 3.3HP MT40JH4EVE COMPRESSEUR MANEUROP 3.3HP MTZ40-JH4AVE COMPRESSEUR (R407A / C / F / R134A / R404A / R507) Compresseur MANEUROP MTZ-36-JG4AVE (R407C / R134a / R404A-R407C / R134a / R404A) -Compresseur JH4AVE (R134a / R404A) – Compresseur 3.3HP 3PH MANEUROP MTZ-44-HJ4AVE (R134a / R404A) – 3. 5HP 3PH MANEUROP 4HP MTZ-50HK-4CVE (MTZ50-4VI / MTZ50-4VM) COMPRESSEUR (R134A / R404A) MANEUROP MTZ56HL3BVE R407c, R134a, R507a, R404a compresseur MANEUROP MT-64-4VM COMPRESSEUR MANEUR 64-4VM COMPRESSEUR

MANEUR COMPRESSEUR MT72-4VM COMPRESSEUR MANEUROP MT-80-4VM (6.5HP) Compresseur MANEUROP 6.6HP MT81HP4AVE COMPRESSEUR MANEUROP MTZ80HM4DVE COMPRESSEUR MANEUROP 8.5HP MT100-4VM COMPRESSEUR MANEUROPE 10HP MT100-4VM (MT100HS4DVE) COMPRESSEUR 10HP MT100-4VM (MT100HS4DVE) COMPRESSEUR MT12M10 MANHOP 4-COMPRESSEUR 10HP R22) COMPRESSEUR MANEUROP 10HP MTZ125HW4AVE (R404A / R134A / R507 / R407C) COMPRESSEUR MANEUROPE 12HP MT144-4VM COMPRESSEUR MANEUROPE 13.3HP MT160-4VM (MT160HW4DVE) COMPRESSEUR MANZVMER 10 COMPRESSEUR MANZVM4 (MT160HW4DVE) / 2 ' ) SER. KIT POUR MT-28 MANEUROP 7703009 (1-1 / 8 ' & 3/4' ) SER.

## Product details

**Gross weight** 41.5 kg

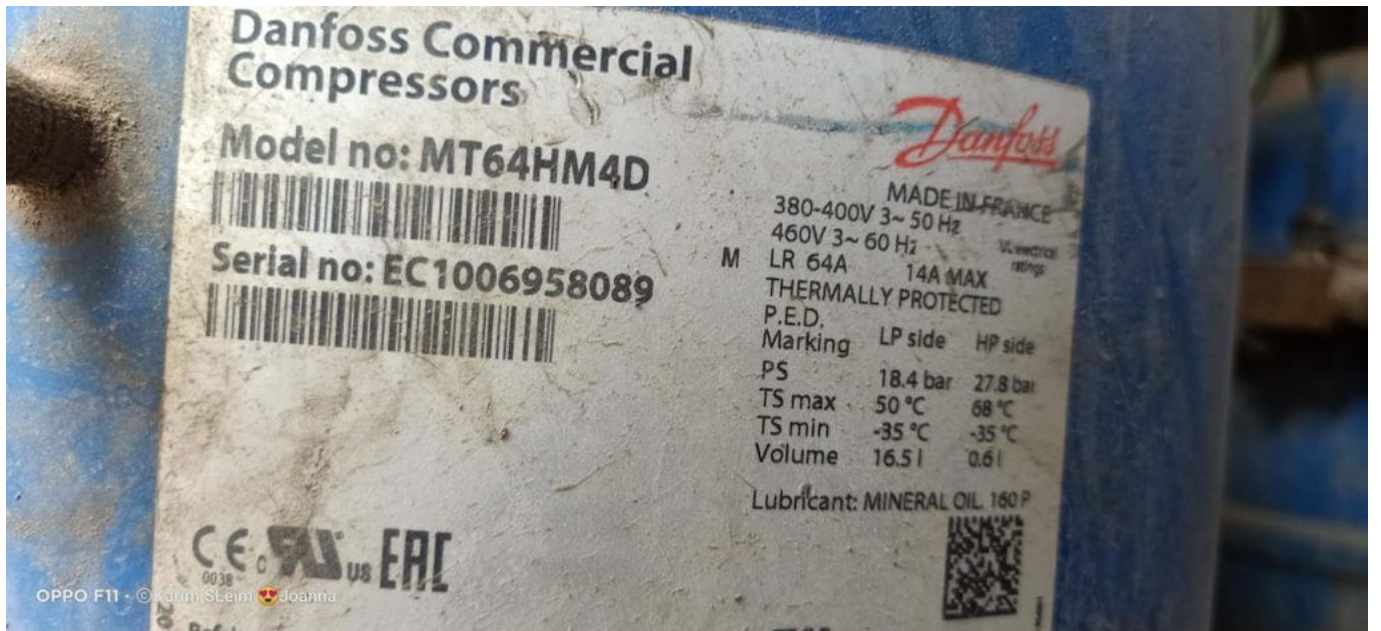
**Net weight** 39 kg

**EAN** 5702428661973

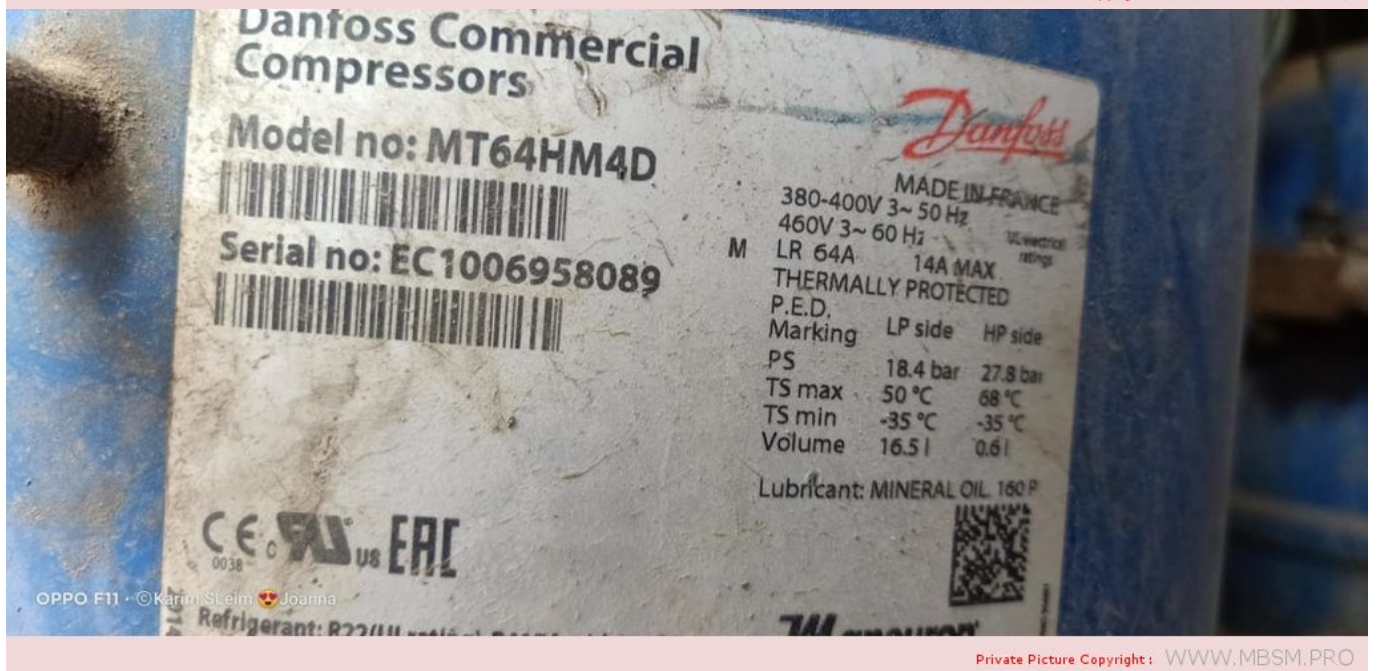
<b>Approval standard</b>	CCC CE UL
<b>Brand technique</b>	Reciprocating compressor
<b>Capacity control</b>	Fixed speed
<b>Colour</b>	Blue
<b>Compressor power supply [V/Ph/Hz]</b>	400/3/50 460/3/60
<b>Configuration code</b>	Single
<b>Connection type</b>	Rotolock
<b>Cylinder</b>	2
<b>Description</b>	MT064-4
<b>Diameter [mm]</b>	288 mm
<b>Discharge connection height [mm]</b>	74 mm
<b>Discharge connection mounting torque [Nm]</b>	90 Nm
<b>Discharge connection pipe size [in]</b>	3/4 in
<b>Discharge connection rotolock size [in]</b>	1 1/4 in
<b>Discharge connection size [in]</b>	1 1/4 in
<b>Discharge connection sleeve pipe size [in]</b>	3/4 in
<b>Drawing number</b>	8502012g
<b>Economizer</b>	No
<b>Factory HP [bar]</b>	25 bar
<b>Factory LP [bar]</b>	25 bar
<b>Fitting remark</b>	(shipped with rotolock version only)
<b>Fitting sleeve</b>	ODF
<b>Fitting standard</b>	Rotolock
<b>Frequency [Hz]</b>	50/60
<b>Gauge port HP</b>	None

Gauge port LP	Schrader
Generation code	E
Glass mounting	Threaded
Glass torque [Nm]	50 Nm
GP LP torque [Nm]	15 Nm
High side max pressure (Ps)	27.8 bar
High Side TS Max	150 °C
High Side TS Min	-35 °C
High Side Volume	0.6 L
High value of nominal voltage at 50Hz [V]	400 V
High value of nominal voltage at 60Hz [V]	460 V
High value of voltage range at 50Hz [V]	460 V
High value of voltage range at 60Hz [V]	506 V
IP protection class	IP55 (with cable gland)
Low side max pressure (Ps)	18.4 bar
Low Side TS Max	50 °C
Low Side TS Min	-35 °C
Low Side Volume	16.5 L
Low value of nominal voltage at 50Hz [V]	380 V
Low value of nominal voltage at 60Hz [V]	460 V
Low value of voltage range at 50Hz [V]	340 V
Low value of voltage range at 60Hz [V]	414 V
LRA	64 A
MCC	14 A
Model number	MT64HM4DVE
Motor protection	Internal overload protector
Mounting torque [Nm]	15 Nm
Nominal cooling capacity 60 kBTU/h	64.51 kBTU/h
Nominal cooling capacity at 50Hz	14.4 kW
Nominal cooling capacity at 60Hz	18.9 kW
Number of starts per hour [Max]	12
Oil charge [L]	1.8 L
Oil equalization	3/8" flare SAE
Oil equalization torque [Nm]	30 Nm
Oil reference	160P
Packaging height [mm]	550 mm
Packaging length [mm]	1150 mm
Packaging weight [Kg]	254 kg
Packaging width [mm]	800 mm
Packing format	Industrial pack
Packing quantity	6
Phase	3
Power connections	Spade
Refrigerant	R22
Refrigerant charge [kg] [Max]	5 kg
Relief valve	30 bar/8 bar

Rotational speed at 50Hz [rpm]	2900 rpm
Rotational speed at 60Hz [rpm]	3500 rpm
Segment usage	Air conditioning Refrigeration MT
Shipped fittings	Suction and discharge solder sleeves, rotolock nuts and gaskets
Shipped instructions	Installation instructions
Shipped mounting	Mounting kit with grommets, bolts, nuts, sleeves and washers
Shipped oil	Initial oil charge
Suction connection height [mm]	265 mm
Suction connection mounting torque [Nm]	110 Nm
Suction connection pipe size [in]	7/8 in
Suction connection rotolock size [in]	1 3/4 in
Suction connection size [in]	1 3/4 in
Suction connection sleeve pipe size [in]	7/8 in
Swept volume [cm <sup>3</sup> ]	107.71 cm <sup>3</sup>
Technology	Reciprocating
Test dif [bar] [Max]	30 bar
Test HP [bar] [Max]	30 bar
Test LP [bar] [Max]	25 bar
Torque earth [Nm]	3 Nm
Torque power [Nm]	3 Nm
Total height [mm]	413 mm
Type	MT
Type designation	Compressor
Viscosity [cP]	32 cP
Winding resistance for three-phase compressors with identical windings [Ohm]	2.44 Ohm



Private Picture Copyright: WWW.MBSM.PRO



Private Picture Copyright: WWW.MBSM.PRO

Product : Compressor  
 产地: 法国制造  
 Plant : Made in France  
 客户: 丹佛斯自动控制管理(上海)有限公司  
 Customer service: Danfoss Automatic Controls Management (Shanghai) Co.Ltd  
 地址电话: 上海市宜山路900号科技大楼C楼20层200233 / (021)61513000  
 Address/Tel: 20th Floor Block C, Hi-Tech Building  
 900 Yi Shan Road Shanghai 200233 / (021)61513000  
 警告: 只有具备一定经验和安全程序  
 培训的授权人员才可以进行安装和维修。  
 Warning: The installation and maintenance  
 should be performed by the authorized  
 person only



**Danfoss Commercial Compressors**



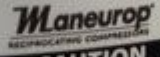
型号: MT64HM4DVE  
  
 序列号: EC1006983516  


产地法国  
 380-400V 3~ 50 Hz  
 460V 3~ 60 Hz  
 额定电流: 6.4A 最大工作电流: 1.4A  
 过热保护  
 低压倒  
 最高额定压力 18.4 bar  
 最高额定温度 50 °C  
 最低额定温度 -35 °C

润滑油: MINERAL OIL 160 P



R134a 制冷剂: R22 或 R417A 仅和 160PZ



**WARNING**

Installation and servicing shall be performed by trained personnel only. Failure to observe these safety warnings could result in personal injury or death.  
 1. Before servicing, disconnect power to the compressor. Discharge the charge of capacitors.  
 2. Wear eye protection in place and securely fastened whenever power is applied to the compressor. Use this equipment on a controlled system only.  
 3. The system contains refrigerant and oil under pressure. Release pressure from both the high and low side before servicing. Wear safety goggles.  
 4. Do not touch the hot surface of the compressor.



**CAUTION**

Use only manufacturer's approved refrigerants, lubricants, and electrical components. Unauthorized refrigerants / lubricant / electrical component could cause fire, explosion, electrical shorting.  
 For details refer to multi language instruction and technical documents available on Danfoss website at [www.danfoss.com](http://www.danfoss.com)



Private Picture Copyright : [WWW.MBSM.PRO](http://WWW.MBSM.PRO)

0937 217 184

MT64-4VM  
KE1008211296  
MT64HM4DVE

产品名称: 制冷压缩机  
Product: Compressor  
产地: 法国制造  
Plant: Made in France  
代理商: 丹佛斯自动控制管理(上海)有限公司  
Customer service: Danfoss Automatic Control Management (Shanghai) Co.Ltd  
地址电话: 上海市宝山顾900号科技大楼3楼30233 / (021) 61512000  
Address/te: 900 Yi Shan Road Shanghai 200233 (021) 61512000  
警告: 只有具备一定技能和安全教育于  
资质的技术人员才可以进行安装和维修。  
Warning: The installation and maintenance  
should be performed by the authorized  
person only.

Compressor

Model no: **MT64HM4DVE**

Serial no: **KE1008211296**

MADE IN FRANCE

M	380-400V 3-30Hz	143 MAX
	480V 3-60Hz	143 MAX
	1.9 kW	
	Thermally protected	
P.E.D.	LP Side	HP Side
Marking	18.40 bar	27.20 bar
TS Max	39.5 °C	102.0 °C
TS Min	-23.9 °C	55.0 °C
Volume	16.1 l	64.1 l
Lubricant	Mineoil HP 180P	

CE, ENEC, ERE, C2000

Refrigerant: R22/R410A / R417A with 180P

WARNING

CAUTION



Private Picture Copyright : [WWW.MBSM.PRO](http://WWW.MBSM.PRO)

[Mbsm\\_dot\\_pro\\_private\\_PDF\\_MT64HM4DVE](#)Télécharger  
[Mbsm\\_dot\\_pro\\_private\\_PDF\\_MT64HM4DVE-5](#)Télécharger

---

## Compressor ,WS85YG, 220 to 240V/50Hz, 1/8HP ,RSCR , R600

Category: Technologie,Tester ok  
written by [www.mbsm.pro](http://www.mbsm.pro) | 18 March 2021

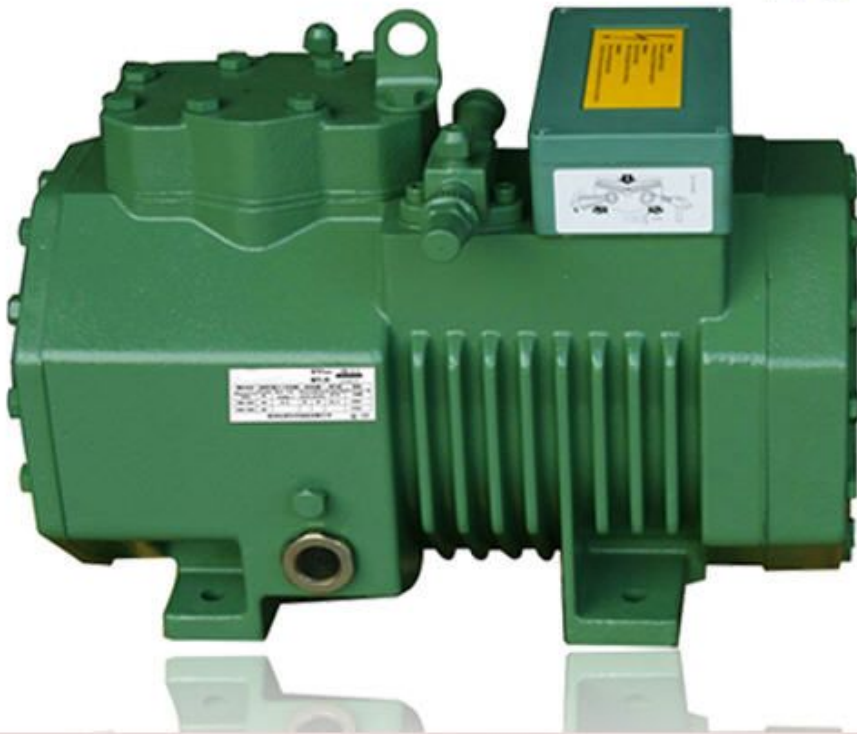


Private Picture Copyright : [WWW.MBSM.PRO](http://WWW.MBSM.PRO)

Compressor ,WS85YG, 220 to 240V/50Hz, 1/8HP ,RSCR , R600

# 3HP , 2CC-3.2 , Bitzer ,Semi hermetic ,Refrigeration ,Compressor ,for cold storage

Category: Technologie,Tester ok  
written by [www.mbsm.pro](http://www.mbsm.pro) | 18 March 2021



Private Picture Copyright: [WWW.MBSM.PRO](http://WWW.MBSM.PRO)

3HP , 2CC-3.2 , Bitzer ,Semi hermetic ,Refrigeration ,Compressor ,for cold storage

---

## Mbsm.pro , GL80AF ,ZEM, EGL80AF, Compressors , Hermetic compressors, 220-230V 50/60Hz , 1/5HP ,1PH , HBP, R134A

Category: Solutions,Tester ok  
written by Jamila | 18 March 2021



PictureS Mbsm Dot Pro : [www.mbsm.pro](http://www.mbsm.pro)

Mbsm.pro , GL80AF ,ZEM Compressors , Hermetic compressors, 220-230V 50/60Hz ,  
1/5HP ,1PH , HBP, R134A  
GD40AF 1/9 , GL45AF 1/8 , GL60AF. GL60AF, GL70AF , GL70ANa 1/5.,GL70AND.  
, GL80AF 1/5.

LBP															
R134a 60 Hz			CECOMAF (W)						ASHRAE		R134a 60 Hz				
			-35	-30	-25		-10	-23.3							
					W	COP		kcal/h	COP						
<b>200-220/220-230V 50/60Hz ~I</b>															
GD30AG	1/12	S	3.08	25	39	57	0.67	130	68	0.88	C	200	5.8	RSIR	P
GD40AF	1/10	S	4.03	35	54	77	0.70	171	91	0.91	C	200	6.8	RSIR	P
GL99BL	1/4	OC	9.93	102	148	204	0.93	434	239	1.21	C	470	11.3	RSCR	P
GL45AF	1/8	S	4.55	41	64	94	0.76	214	111	0.99	C	270	9.0	RSIR	P
GL60AF	1/6	S	5.99	66	94	131	0.81	286	154	1.05	C	270	9.1	RSIR	P
GL70AF	1/5	S	6.65	80	110	150	0.90	323	175	1.17	C	345	10.1	RSIR	P
GL70ANa	1/5	S	6.65	80	110	150	0.90	323	175	1.17	C	345	10.1	RSIR	P
GL70ANb	1/5	OC	6.65	80	110	150	0.90	323	175	1.17	C	445	10.4	RSIR	P
GL80AF	1/5	S	8.10	87	123	172	0.92	384	202	1.19	C	445	10.6	RSIR	P
GL80ANa	1/5	S	8.10	87	123	172	0.92	384	202	1.19	C	445	10.6	RSIR	P
GL80ANb	1/5	OC	8.10	87	123	172	0.92	384	202	1.19	C	445	10.7	RSIR	P
GL90AF	1/4	S	9.08	96	134	185	0.93	421	218	1.20	C	445	10.8	RSIR	P
GL90ANa	1/4	S	9.08	96	134	185	0.93	421	218	1.20	C	445	10.8	RSIR	P
GL90ANb	1/4	OC	9.08	96	134	185	0.93	420	218	1.20	C	445	10.9	RSIR	P
<b>115V 60Hz ~I</b>															
GD24AD	1/20	S	2.42	14	25	40	0.52	99	48	0.70	C	200	5.1	RSIR	P
GD36AD	1/12	S	3.62	30	47	68	0.65	149	80	0.85	C	240	6.1	RSIR	P
GL45ADa	1/8	S	4.55	41	65	95	0.80	214	112	1.05	C	265	8.1	RSIR	P
GL45ADb	1/8	S	4.55	41	65	95	0.80	214	112	1.05	C-V	265	8.1	CSIR	R
GL60ADa	1/6	S	5.99	64	94	132	0.85	290	155	1.10	C	265	9.1	RSIR	P
GL60ADb	1/6	S	5.99	64	94	132	0.85	290	155	1.10	C	210	9.1	CSIR	R
GL60BK	1/6	OC	5.99	66	95	132	0.84	290	155	1.10	C	400	10.0	RSCR	P
GL70ADa	1/5	S	6.65	79	108	148	0.86	322	173	1.12	C	345	9.6	RSIR	P
GL70ADb	1/5	S	6.65	79	108	148	0.86	322	173	1.12	C	345	9.6	CSIR	R
GL80ADa	1/5	S	8.10	84	121	171	0.87	383	201	1.13	C	345	9.8	RSIR	P
GL80ADb	1/5	S	8.10	84	122	171	0.87	384	201	1.13	C-V	345	9.8	CSIR	R
GL80BK	1/5	OC	8.10	79	119	169	0.85	381	200	1.11	C	470	11.1	RSCR	P
GL90ADa	1/4	S	9.08	97	138	191	0.88	420	224	1.14	C	445	10.5	RSIR	P
GL90ADb	1/4	S	9.08	97	138	191	0.88	420	224	1.14	C	445	10.5	CSIR	R



**ZMC**

**EGL80AF** 0609

**R 134 a**



200-220V~50Hz

220-230V~60Hz

MADE IN EGYPT



3 445

0265983



					kcal/h	W	W/W	W/W	W/W	W/W
▶ <input type="checkbox"/>	<a href="#">GL45AA</a>	LBP-R134a	1/8	43	A	96	82	1.06	0.82	
▶ <input type="checkbox"/>	<a href="#">GL45AN</a>	LBP-R134a	1/8	50	C	96	81	1.05	0.8	
▶ <input type="checkbox"/>	<a href="#">GL60AA</a>	LBP-R134a	1/6	43	A	132	114	1.14	0.89	
▶ <input type="checkbox"/>	<a href="#">GL60AF</a>	LBP-R134a	1/6	43	D	132	113	1.07	0.82	
▶ <input type="checkbox"/>	<a href="#">GL60AH</a>	LBP-R134a	1/6	43	A	133	114	1.31	1.01	
▶ <input type="checkbox"/>	<a href="#">GL60AN</a>	LBP-R134a	1/6	50	C	132	114	1.07	0.83	
▶ <input type="checkbox"/>	<a href="#">GL70AA</a>	LBP-R134a	1/5	43	A	149	128	1.18	0.9	
▶ <input type="checkbox"/>	<a href="#">GL70AN</a>	LBP-R134a	1/5	50	D	150	129	1.08	0.83	
▶ <input type="checkbox"/>	<a href="#">GL70AT</a>	LBP-R134a	1/5	43	E	144	122	1.09	0.84	
▶ <input type="checkbox"/>	<a href="#">GL75AA</a>	LBP-R134a	1/5	43	A	155	133	1.18	0.92	
▶ <input type="checkbox"/>	<a href="#">GL80AA</a>	LBP-R134a	1/5	43	A	173	148	1.19	0.93	
▶ <input type="checkbox"/>	<a href="#">GL80AF</a>	LBP-R134a	1/5	43	D	166	141	1.14	0.88	
▶ <input type="checkbox"/>	<a href="#">GL80AH</a>	LBP-R134a	1/5	43	A	175	150	1.35	1.06	
▶ <input type="checkbox"/>	<a href="#">GL80AN</a>	LBP-R134a	1/4	43	A	196	168	1.36	1.06	
▶ <input type="checkbox"/>	<a href="#">GL90AA</a>	LBP-R134a	1/4	43	A	195	167	1.19	0.93	
▶ <input type="checkbox"/>	<a href="#">GL90AH</a>	LBP-R134a	1/4	43	A	215	182	1.39	1.08	
▶ <input type="checkbox"/>	<a href="#">GL90AN</a>	LBP-R134a	1/4	50	D	190	163	1.1	0.85	
▶ <input type="checkbox"/>	<a href="#">GL90AT</a>	LBP-R134a	1/4	43	E	190	163	1.18	0.87	



Picture5 Mbsm Dot Pro : [www.mbsm.pro](http://www.mbsm.pro)



Private Picture Copyright : [WWW.MBSM.PRO](http://WWW.MBSM.PRO)



Private Picture Copyright : [WWW.MBSM.PRO](http://WWW.MBSM.PRO)

## Données techniques

- Modèle: **GL80AA**
- Gaz réfrigérant: **R-134a**
- Pression / température: **LBP**
- Puissance: **1/5 HP**
- Type de courant: **monophasé**
- Fréquence: **50 Hz**
- Type de compresseur: **hermétique**
- Déplacement: **8,10 cm<sup>3</sup>**
- Consommation d'énergie. Énergie -35 ° C: **117 W**
- Consommation d'énergie. Énergie -25°C: **158 W**
- Consommation d'énergie. Énergie -10 ° C: **237 W**
- T ° Condensation: **40 ° C**
- Capuchon de refroidissement. -35 ° C: **95 Kcal / h**
- Capuchon de refroidissement. -30 ° C: **132 Kcal / h**
- Capuchon de refroidissement. Énergie -25 ° C: **178 Kcal / h**
- Capuchon de refroidissement. -20 ° C: **234 Kcal / h**

- Capuchon de refroidissement. -15 ° C: **300 Kcal / h**
- Capuchon de refroidissement. Énergie -10 ° C: **375 Kcal / h**
- Type de test: **Ashare 32**

Mbsm\_dot\_pro\_private\_PDF\_GLy60aaTélécharger

Mbsm\_dot\_pro\_private\_PDF\_GLy60aa-1Télécharger

---

**Mbsm.pro, 1/5 HP ,170 w, SL23YE-5,  
DAEW00, HERMETIC COMPRESSOR ,Turkey  
Refrigeration & Heat , R12**

Category: Solutions,Tester ok

written by Jamila | 18 March 2021



PictureS Mbsm Dot Pro : [www.mbsm.pro](http://www.mbsm.pro)

Mbsm.pro, 1/5 HP , 170 w, SL23YE-5, DAEWOO, HERMETIC COMPRESSOR , Turkey Refrigeration & Heat , R12



SL23YE-5  
AC 220-240V 50Hz  
LRA 7.74  
THERMALLY PROTECTED  
DPEWOO ELECTRONIC Co., Ltd.  
MADE IN KOREA  
9909021362



PictureS Mbsm Dot Pro : [www.mbsm.pro](http://www.mbsm.pro)

Product Details

Company Profile

Inquiry Records(4)

Our Company is since 1969. All Refrigerant parts Trade. All refrigerants products import export. Air Condition Compressor, Other parts, Freezer Room parts, insulation, valve, all refrigerant, in Turkey. . .

#### Basic Information

Business Type: Trading Company, Distributor/Wholesaler  
Product/Service (We Sell): Refrigerant Parts, Air COnditioner, Copper, Heat Exhancer, Refrigerator, Condensing Unit, Condenser, Compressor  
Number of Employees: 11 - 50 People

#### Trade & Market

Main Markets: Eastern Europe, Southeast Asia, Africa, Mid East, Eastern Asia, Western Europe

#### Factory Information

Factory Location: Keresteci Recep Sk. No.10



PictureS Mbsm Dot Pro : [www.mbsm.pro](http://www.mbsm.pro)

Product Details

Company Profile

Inquiry Records(4)

**Item specifics**

Place of Origin: Seoul South Korea

JX51LHS5: 1/6 - ST

Port: ISTANBUL

HSL21YE-5-C: 1/5 - OC

HGH25YE-5: 1/4 - ST

HGH23YE-5: 1/5 - ST

HSL25YE-5-C: 1/4 - OC

Certification: CE

DM99HHG5: 3/8 - ST

Type: Refrigeration Compressor

Application: Refrigeration Parts



PictureS Mbsm Dot Pro : [www.mbsm.pro](http://www.mbsm.pro)

## Ohter 134A

FREON R134A GASES.

220V - 50~60HZ

LBP and HBP Application

MODEL	CC/REV	(W)	(Kcal)
JX51LHS5	5,1	129	111
HSL21YE-5-C	6,7	176	151
HSL25YE-5-C	7,7	198	170
HGH23YE-5	7,0	659	567
HGH25YE-5	7,7	803	691
DM99HHG5	9,9	1093	940



PictureS Mbsm Dot Pro : [www.mbsm.pro](http://www.mbsm.pro)