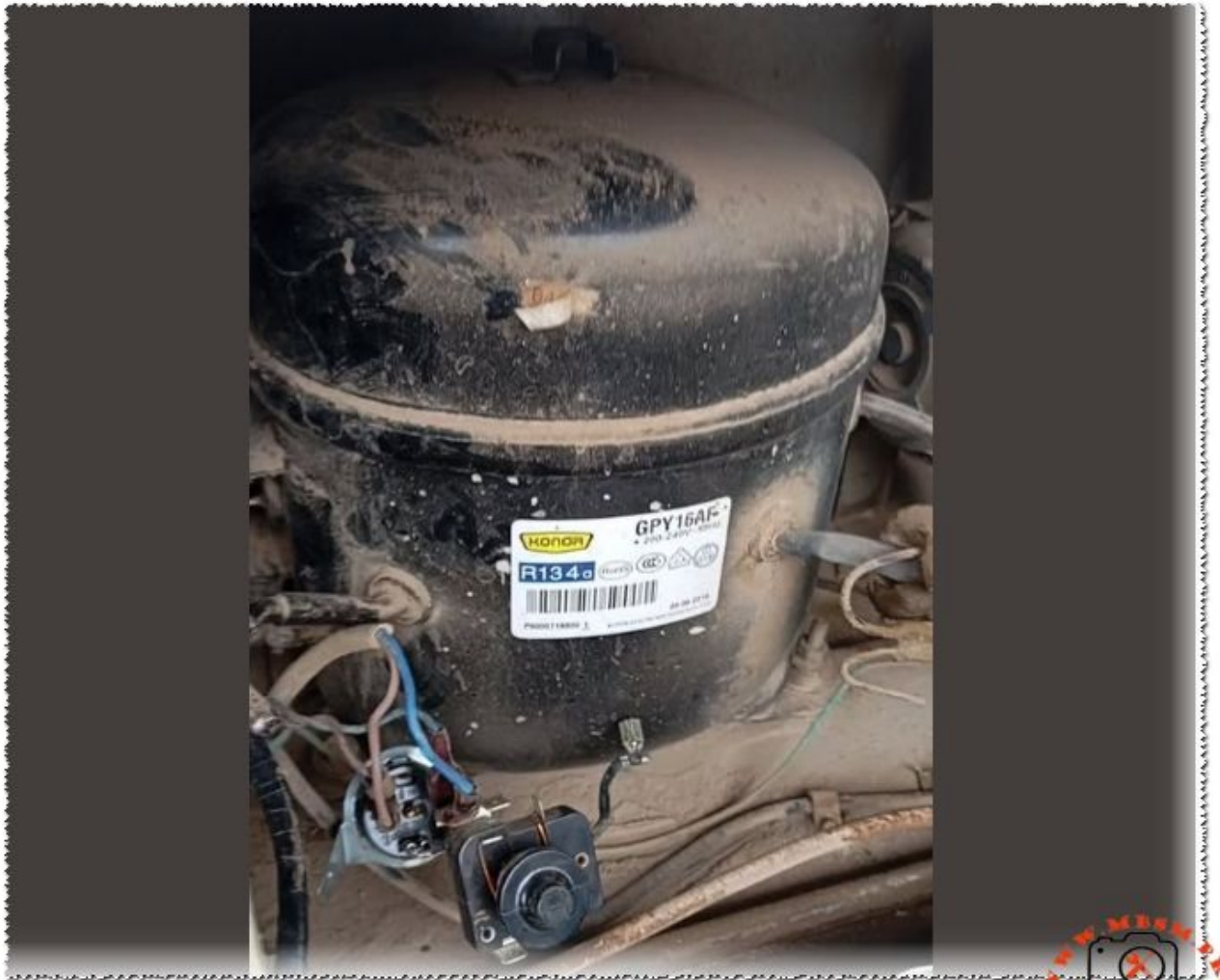


# Compressor, Konor, GPY16AF, 1/2 HP, R134a, LBP

Category: Refrigeration

written by [www.mbsm.pro](http://www.mbsm.pro) | 18 January 2026



Private Picture Copyright : [WWW.MBSM.PRO](http://WWW.MBSM.PRO)

The Konor GPY16AF is a robust hermetic reciprocating compressor engineered for low back pressure applications using R134a refrigerant. With a displacement of 16.2 cm<sup>3</sup>, this 1/2 HP unit is a staple in commercial freezers and large refrigerators. This guide provides detailed technical data, wiring diagrams, and professional cross-reference options for field technicians.

---

## High, Efficiency, R134a, Hermetic, Compressor, GPY16AF, RoHS, 3/8hp, csir, lbp, 220v, 380w

Category: compressor

written by [www.mbsm.pro](http://www.mbsm.pro) | 18 January 2026



Private Picture Copyright : [WWW.MBSM.PRO](http://WWW.MBSM.PRO)

### **R134a GPY16AF series sealed refrigeration compressor 220-240v/50Hz**

The main feature:

strong loading capacity,  
high efficiency,  
low noise,  
light vibration,  
good reliability.

suitable for mid-size refrigerators, freezers, displayers, beer displayers and other mid-size refrigeration appliances. The structure form is hermetical crank connecting-rod reciprocating piston type.

They are the best selling high-tech compressors sold in the world. They are ideal for domestic refrigeration and also for small commercial applications. They are small, have low noise and vibration levels, they achieve the highest levels of efficiency available in the market for this category.

KONOR	Displ. power	Motor type	V/Hz	Cooling capacity	W Net	Weight	KG
GQR60AA	6	1/6	RSIR	220-240V/50Hz	140	9.4	
GQR70AA	6.6	1/5	RSIR	220-240V/50Hz	165	9.4	
GQR80AA	8.1	1/4	RSIR	220-240V/50Hz	198	9.4	
GQR90AA	9.1	1/4	RSIR	220-240V/50Hz	220	10.1	
GQY99AA	9.9	1/4	RSIR	220-240V/50Hz	270	10.9	
GQY12AF	11.8	1/3	CSIR	220-240V/50Hz	325	10.56	
GQY16AF	16.2	3/8	CSIR	220-240V/50Hz	380	12.1	
GP16MG	16.2	5/8	CSIR	220-240V/50Hz	870	12.5	
GP12MG	11.8	5/8	CSIR	220-240V/50Hz	656	10.9	
GP12TG	11.8	3/8	CSIR	220-240V/50Hz	1140	11.8	
GQR80TG	8.1	1/4	CSIR	220-240V/50Hz	730	9.8	
GQR90TG	9.1	1/4	CSIR	220-240V/50Hz	830	10.5	
GQR60TG	6	1/5	CSIR	220-240V/50Hz	520	9.8	

### Specification

Hermetic motor driven the piston connecting rod type compressor. With relay start-up of hammer type, and equipped with overload protector.

### Application

Widely used in home and commercial refrigerator, air-curtain cabinet, display showcase, ice maker, chiller freezer, dehumidifier, etc.

R134a LBP Fan Cooling Compressor

Model: GPY16AF

Power: 3/8HP

Displacement: 16.2cm<sup>3</sup>

Capacity: 380w

COP: 1.3W

Voltage: 200-240V/50HZ

Motor Way: CSIR

Application: LBP

Cooling Type: Fan Cooling

Height: 210mm

Net Weight: 12.9kg

Dimension: 210\*162\*237.2(mm)

Test Conditions (ASHRAE)

Evaporating temperature -23.3°C

Condensing temperature 54.4°C

Subcooling temperature 32.2°C

Suction temperature 32.2°C

Ambient temperature 32.2°C

Conversion:

1watt=3.41Btu/h=0.86kcal/h



● ○ REDMI NOTE 9  
∞ AI QUAD CAMERA

Private Picture Copyright : [WWW.MBSM.PRO](http://WWW.MBSM.PRO)

Mbsm\_dot\_pro\_private\_PDF\_gpy16fTélécharger