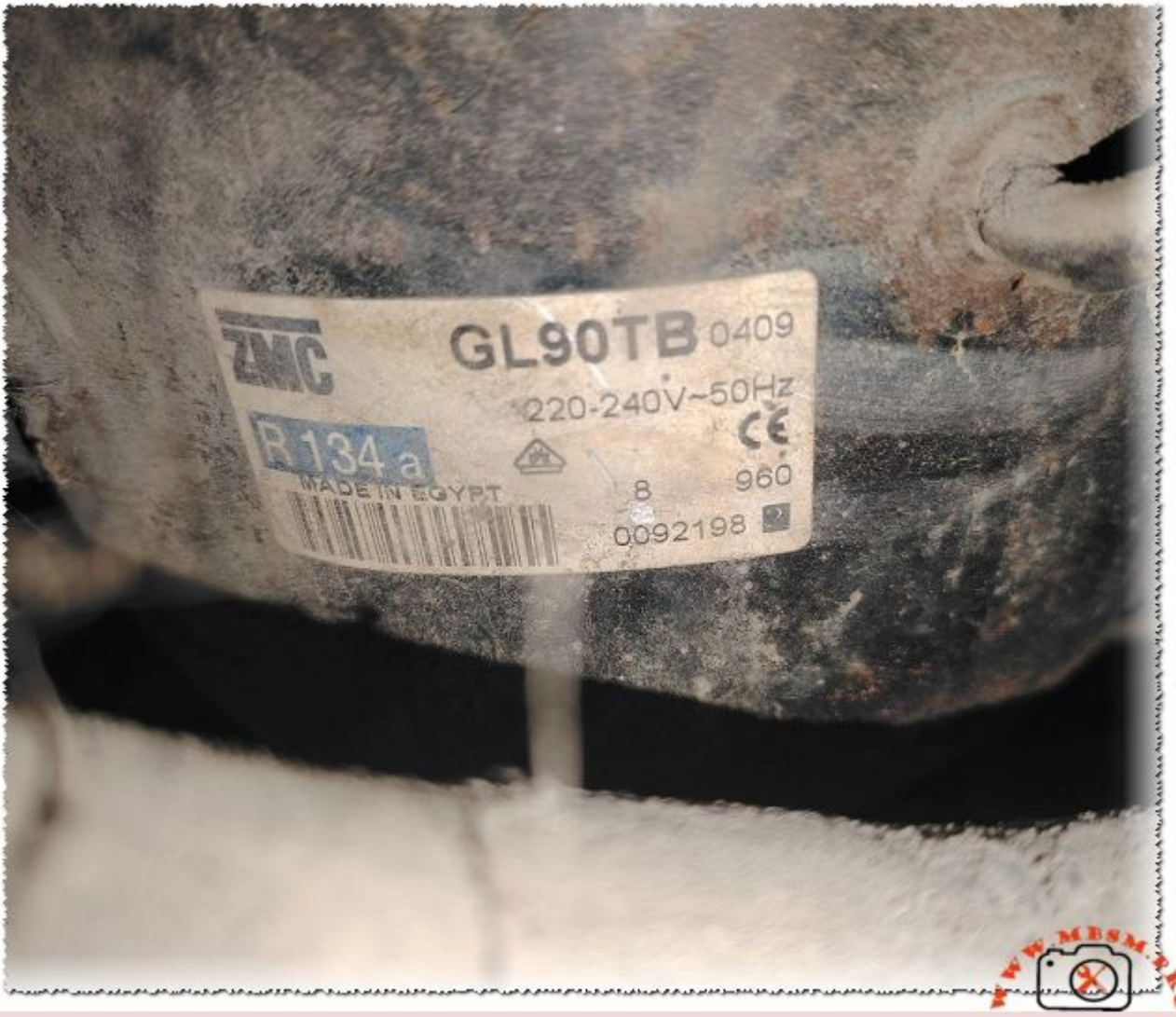


ZMC GL90TB Compressor Technical Specifications and R134a Replacement Guide

Category: Mbsmpro

written by www.mbsm.pro | 31 January 2026



Private Picture Copyright : WWW.MBSM.PRO

The ZMC GL90TB is a high-performance 1/4 HP compressor designed for High Back Pressure (HBP) commercial refrigeration. Operating on R134a with a 220-240V supply, it offers a cooling capacity of approximately 2800 BTU/h. This article provides technical specs, COP efficiency metrics, and direct replacement models for professional HVAC technicians and industrial cooling experts.

Mbsm.pro, Compressor, Cubigel,

GL90TB, GU80TG, GU80TB, R134a, 1/4
hp, hmbp, csir

Category: compressor

written by www.mbsm.pro | 31 January 2026



Mbsm.pro, Compressor, Cubigel, GL90TB, GU80TG, GU80TB, R134a, 1/4 hp, hmbp, csir

Zel, 0F605, 0F700, 0F789, 0F1033A,
0F1350A, GVY35AA, GVY40AA, GVY44AA,
GVY53AA, GVY57AA, GVY66AA, GW75AA,
GTH86AA, GTH93AA, GTM93AA, GTM10AA,
GTM12AA, GML70A, GMLI10A, GML 140A,
GML140G, GML160G, GML180A, GML200A,
GXL160A, GL60TG, Gt80TB, GL90TB,

GHP13AA, GHP16AA, GHP184A, GHP21AA, HBP, high back pressure, R134a, refrigeration compressor for refrigerator, 220/240V 50Hz

Category: compressor

written by www.mbsm.pro | 31 January 2026

© R134a LBP 220-240V/50Hz

系列 应用工况	型号 Model	排气量 Displ.	电机功率 Power	电机类型 Motor type	制冷量 (W) 蒸发温度 (°C) / Cooling Capacity ASHRAE											输入功率 Input Power without RC	性能系数 COP without RC	高度 Height (h)	
					-30	-25	-23.3	-20	-15	-10	-5	0	5	7.2	10				
	W / °C											w	w/w	mm					
Tau 普 效系列/ LBP	OF605	3.4	1/11	RSIR	45	59	76	95	119	149	185	228					78	0.98	163
	OF700	3.8	1/6~	RSIR	55	72	94	118	147	184	229	282					93	1.01	163
	OF789	4.4	1/6	RSIR	65	85	110	138	172	216	268	330					102	1.08	174
	OF1033A	5.7	1/5~	RSIR	83	109	141	176	220	276	344	423					118	1.19	174
	OF1350A	7.5	1/4~	RSIR	105	137	178	223	278	349	434	534					158	1.13	183
Tau 中 效系列/ LBP	GVY35AA	3.5	1/11	RSIR/RSCR	47	62	80	100	125	157	195	240					69	1.16	163
	GVY40AA	4.0	1/7	RSIR/RSCR	59	77	100	125	156	196	244	300					83	1.20	174
	GVY44AA	4.4	1/6	RSIR/RSCR	70	91	118	148	184	231	288	354					94	1.25	174
	GVY53AA	5.3	1/5~	RSIR/RSCR	82	107	139	174	217	272	339	417					105	1.33	174
	GVY57AA	5.7	1/5~	RSIR/RSCR	89	116	150	188	234	294	366	450					113	1.33	174
	GVY66AA	6.6	1/5+	RSIR/RSCR	107	140	182	228	284	357	444	546					133	1.37	174
	GVY75AA	7.5	1/5+	RSIR/RSCR	118	154	200	250	312	392	488	600					149	1.34	174
	GTH86AA	8.6	1/4	RSIR/RSCR	136	177	230	288	359	451	561	690					161	1.43	174
商用高 效系列/ LBP	GTH93AA	9.3	1/4	RSIR/RSCR	153	200	260	325	406	510	634	780					182	1.43	184
	GTM93AA	9.3	1/4	RSIR	159	208	270	338	421	529	659	810					220	1.35	184
	GTM10AA	10.0	1/3	CSIR	177	231	300	375	468	588	732	900					222	1.35	184
	GTM12AA	12.0	1/3	CSIR	195	254	330	413	515	647	805	990					241	1.37	184

© R134a LBP 220-240V/50Hz

Lambda 系列/LBP	GML70A*	3.4	1/12	RSIR	40	52	68	85	106	133	166	204					57	1.20	152
	GML110A	4.1	1/8	RSIR	66	86	112	140	175	220	273	336					90	1.25	152
	GML140A	4.9	1/6	RSIR	83	108	140	175	218	274	342	420					108	1.30	152
	GML140G*	4.9	1/6	RSIR/RSCR	83	108	140	175	218	274	342	420					108	1.40	152
	GML160G	5.7	1/6	RSIR/RSCR	99	129	168	210	262	329	410	504					129	1.30	161
	GML180A	6.5	1/5	RSIR/RSCR	110	144	187	234	292	367	456	561					144	1.30	164
	GML200A	7.0	1/5	RSIR/RSCR	118	154	200	250	312	392	488	600					152	1.32	164
	GXL160A	5.7	1/7	RSIR	104	136	176	220	275	345	429	528					/	/	164
	GXL200A	7.0	1/6	RSIR	126	164	213	266	332	417	520	639					/	/	164

© R134a M/HBP 220-240V/50Hz

中高背 压系列 MBP/ HBP	GL60TG	5.3	1/3	CSIR				172	213	260	329	410	502	540	605	240	2.25	174
	GL80TB	7.5	1/2	CSIR				204	252	308	390	486	595	640	717	262	2.44	184
	GL90TB	7.5	1/2	CSIR				239	296	361	458	570	698	750	840	323	2.32	184
	GL10TB	9.3	1/2	CSIR				249	307	375	476	593	725	780	874	342	2.28	184
	GHP13AA*	13.0	1	CSIR				281	347	423	537	669	818	880	986	429	2.05	184
	GHP16AA*	16.0	1	CSIR				351	433	529	671	836	1023	1100	1232	550	2.00	215
	GHP18AA*	18.0	1	CSIR				415	512	625	793	988	1209	1300	1456	650	2.00	215
	GHP18AA*	18.0	1	CSIR				510	630	770	976	1216	1488	1600	1792	730	2.20	215
	GHP21AA*	21.0	1	CSIR				606	749	914	1159	1444	1767	1900	2128	900	2.10	215

OF605,
OF700,
OF789,
OF1033A,
OF1350A,
GVY35AA,
GVY40AA,
GVY44AA,
GVY53AA,
GVY57AA,
GVY66AA,
GVY75AA,
GTH86AA,
GTH93AA,

GTM93AA,
GTM10AA,
GTM12AA,
GML70A,
GMLIIOA,
GML 140A,
GML140G,
GML160G,
GML180A,
GML200A,
GXL160A,
GL60TG,
Gt80TB,
GL90TB,
GHP13AA,
GHP16AA,
GHP184A,
GHP21AA,

Mbsm.pro, Codes and capacities of ZEL all compressors, pistons, motors, and refrigeration and air conditioning motors

Category: compressor

written by www.mbsm.pro | 31 January 2026

意大利扎努西 ZEL — R134a

220—240V / 50Hz

GML200A	输入功率.152W	制冷量.200W
GML180A	输入功率.144W	制冷量.187W
GML160G	输入功率.129W	制冷量.168W
GML140A	输入功率.108W	制冷量.140W
GML110A	输入功率.90W	制冷量.112W

WOMA 旺码
广州旺码制冷设备有限公司
Email: davidhu815@gmail.com

C 63010440

ZEL GML200A 17-41
220-240V 50Hz
R134a SUCTION >
8 379 0004810 2

Private Picture Copyright : WWW.MBSM.PRO

GVY61AA, GVY75AA, GVY75AG, GTH86AA, GTH93AA, GTT66AA, GTT75AA, GKD86AA, GKD93AA, GXL140F, GXL200F, MODEL, GML70A, GML90A, GML110A, GML125A, GML140A, GML140A/I, GML160A, GML180A, GML200A, GML200A/I, GTM26AA, GTM75AA, GDL160A, GDL200A, GXL100A, GXL125A, GXL140A, GXL160A, GXL200A, GXL240A, GL60TP, GL80TP, GL90TP, GL90TP/I, GL10TP, GL12TP, GHP16AA, GHP18AA, GHP21AA, MODEL, HML100A, HML125A, HML140A, HML155A, HML170A, HML190A, HML200A, HDL100A, HDL125A, HDL140A, HDL155A, HDL170A, HDL200A, HXL100A, HXL125A, HXL140A, HXL155A, HXL170A, HXL190A, HPL100A, HPL125A, HPL140A, HML125A(T), HML140A(T), HML170A(T), HMK12AA, , MODEL, HDL125F, HDL140F, HDL160F, HDL180F, HDL190F, HXL140F, HXL160F, HXL190F, HML125G, HML140G, HML170G, HDL140G, HDL170G, HXL155G, HXL185G, , MODEL, GML70A, GML80A, GML90A, GML110A, GML125A, GML140A, GML180A, GML200A(M), GML200A, GDL140A, GDL160A, GDL200A(M), GDL200A, GXL125A, GXL140A, GXL160A, GXL200A, , MODEL, GML70G, GML80G, GML90G, GML125G, GML140G, GML160G, GXL125G, GXL140G, GXL160G, GML110A(T), GML140A(T), GML200A(T), MODEL, HDZ100A(M), HDZ100A, HDZ125A, HDZ140A, HDZ155A, HDZ170A, HXZ100A, HXZ125A, HXZ140A, HXZ155A, HXZ170A, HPZ100A, HPZ125A, HPZ140A, HPZ155A, HPZ170A, HDZ100F, HDZ125F, HDZ140F, HDZ160F, HDZ190F, , MODEL, HMM70A, HMM80A, HMM90A, HMM100A, HDM80A, HDM90A, HDM100A, HDM110A, , MODEL, GL90TB, GL90TB(B), GL10TB, GL12TB, GL60TG, GL90TG, GTM93AA, GTM10AA, GTM12AA, GTM93AG, GMM70A, GMM80A, GMM90A, GMM110A, , MODEL, NLT44AA, NLT53AA, NLT57AA, NLT61AA, NLT66AA, NLT75AA, NLT80AA, NLT86AA, NLT93AA, NLT44AA(I), NLT53AA(I), NLT57AA(I), NLT61AA(I), NLT66AA(I), NLT75AA(I), NLT80AA(I), NLL160A, NLL200A, NLL200A(I), NMT53AA, NMT57AA, NMT66AA, NMT75AA, , MODEL, HTT11AA, HPKD190A, HPKX190A, HTH14AA, HTH14AA(I), HKD14AA, HYV67AA.02, HTK12AA.02, HPKD180G, HPKD200G, , MODEL, GVY57AA, GVY61AA, GVY66AA, GVY75AA, GTH86AA, GTH93AA, GTM93AA, GTT66AA, GTT75AA, GKD86AA, GKD86AA(I), GKD93AA, GVY53AG, GVY57AG, GVY75AG, GKD86AG, GKD93AG

Cubigel Compressors, Compressor, GQY80AT, 1/4Hp, LBP, R134a, 8.1cmc,165 W, REFRIGERATEUR INDESIT

Category: compressor

written by www.mbsm.pro | 31 January 2026



BAJA presión		serie LBP																	
CÓDIGO REMLE	MODELO	Potencia	Enfriam.	Cilind.	Producción Frigorific en Watts.								Expans.	Acete cm3	Peso Kg.	Motor	Arranq.	Modelos MIX Sustitutos R-12 / 134a	
◦ Últimas existencias					-35	-30	-25	-23,3	-20	-15	-10	Sustitutos R-12 / R134a							
◦451.00.0202	D40AS	1/10	S	4.00	40	56	74	81	96	121	149	C	240	6.7	RSIR	P	GD40AAa	451.00.3301	
◦451.00.0002	L45AV	1/8	S	4.50	39	57	79	87	105	136	171	C	300	8.4	RSIR	R	GL45AA	451.00.3302	
◦451.00.0003	L55AV	1/6	S	5.47	49	73	101	112	134	171	211	C	470	9.5	RSIR	R	GL60AA	451.00.3303	
◦451.00.0004	L76AV	1/5	S	7.57	58	89	125	139	168	217	271	C	530	10.5	RSIR	R	GL75AA	451.00.3304	
◦451.00.0104	L76BV	1/5	OC	7.57	58	89	125	139	168	217	271	C	530	10.5	RSIR	R			
◦451.00.0005	L88AV	1/4	S	8.85	69	107	150	167	200	255	317	C	530	11.0	RSIR	R	GL80AA	451.00.3305	
◦451.00.0105	L88BV	1/4	OC	8.85	69	107	150	167	200	255	317	C	530	11.0	RSIR	R	GL90AAa OC	451.00.3325	
◦451.00.0205	L88FW	1/4	F	8.85	69	107	150	167	200	255	317	C-V	530	10.0	RSIR	R	GL90AAb	451.00.3205	
◦451.00.0106	P12BW	1/3	OC	12.00	79	132	192	215	261	337	422	C	530	11.5	RSIR	R	GP12BB OC	451.00.3326	
◦451.00.0206	P12FW	1/3	F	12.00	79	132	192	215	261	337	422	C-V	530	11.5	RSIR	R	GP12FB	451.00.3206	

Private Picture Copyright: WWW.MBSM.PRO

Compresor GQY80AT, freon R134a, capacitate 8.1 cmc, capacitate frigorifica ASHRAE 222 W, capacitate frigorifica CECOMAF 165 W, racire statica #GQY80AT

Model: GQY80AT

Freon: R134a

Capacitate: 8.1 cmc

Capacitate frigorifica ASHRAE: 222 W

Capacitate frigorifica CECOMAF: 165 W

35 -30 -25 -10 w COP

- 451.00.3301 GD40AAa / GQY40AA 1/10 S 4.03 34 49 70 0.77 154 C 200 6.7 RSIR P •
- 451.00.3202 GD40AA 1/10 S 4.03 34 49 70 0.77 154 C 200 6.7 RSIR P •
- 451.00.3302 GL45AA / GQY44AA 1/8 S 4.55 37 56 81 0.81 183 C 265 8.3 RSIR P •
- 451.00.3303 GL60AA / GQY57AA 1/6 S 5.99 50 75 107 0.85 238 C 265 9.1 RSIR P •
- 451.00.3304 GL75AA / GQY66AA 1/5 S 6.65 57 85 121 0.87 267 C 345 9.6 RSIR P •
- 451.00.3305 GL80AA / GQY75AA 1/5 S 7.52 68 101 144 0.89 326 C 345 9.9 RSIR P •
- 451.00.3104 GL80AAb 1/5 OC 8.10 68 101 144 0.89 326 C-V 345 9.9 CSIR R •
- 451.00.3005 GL90AA 1/4 S 9.08 82 119 165 0.90 350 C 345 10.2 RSIR P •
- 451.00.3306 GL90AAa / GQY80AT 1/4 S 9.08 82 119 165 0.90 350 C 345 10.2 RSIR P •
-
- 451.00.3105 GL90AAb 1/4 OC 9.08 82 119 165 0.90 350 C-V 345 10.2 CSIR R •
- 451.00.3205 GL90AAb 1/4 F 9.08 82 119 165 0.90 350 C-V 345 10.2 CSIR R •
- 451.00.3325 GL90AAa 1/4 OC 9.08 82 119 165 0.90 350 C-V 345 10.2 CSIR R •
- 451.00.3106 GP12BB 1/3 OC 12.00 83 131 190 0.88 424 C 400 11.5 RSIR R •
- 451.00.3206 GP12FB 1/3 F 12.00 83 131 190 0.88 424 C 400 11.5 RSIR R •
- 451.00.3326 GP12BB 1/3 OC 12.00 83 131 190 0.88 424 C 400 11.5 RSIR R •

451.00.3218 GP14CB 3/8 F 14.17 99 158 228 0.90 509 C 400 11.5 RSIR R •
451.00.3223 GP16FB 3/8 F 16.15 109 182 266 0.89 585 C-V 530 12.0 CSIR R •
451.00.3224 GX18FB 3/7 F 18.40 123 199 291 0.91 660 C-V 500 15.1 CSIR R •
451.00.3225 GX21FB 2/3 F 20.72 151 243 351 0.93 778 C-V 500 15.5 CSIR R •
451.00.3403 GL45TB 1/6 F 4.50 76 134 342 1.62 412 C-V 300 8.4 CSIR R •
• 451.00.3503 GL45PB 1/6 F 4.50 76 134 342 1.62 412 C-V 300 8.4 CSIR R •
451.00.3404 GL60TB 1/5 F 5.67 95 170 437 1.82 527 C-V 300 9.5 CSIR R •
• 451.00.3504 GL60PB 1/5 F 5.67 95 170 437 1.82 527 C-V 300 9.5 CSIR R •
451.00.3406 GL80TB 1/5 F 7.57 111 212 554 1.83 667 C-V 300 9.5 CSIR R •
• 451.00.3505 GL90TB 1/4 F 8.85 142 259 661 1.91 796 C-V 300 10.8 CSIR R •
• 451.00.3506 GP12TB 3/8 F 12.05 169 338 893 1.80 1077 C-V 350 11.2 CSIR R •
451.00.3418 GP14TB 3/8 F 14.00 190 373 999 1.77 1208 C-V 400 11.5 CSIR R •
• 451.00.3513 GP14TB 3/8 F 14.00 190 373 999 1.77 1208 C-V 400 11.5 CSIR R •
451.00.3419 GX18TB 1/2 F 18.40 285 539 1390 1.91 1673 C-V 500 16.0 CSIR R •
451.00.3420 GX21TB 5/8 F 20.72 332 603 1550 1.90 1866 C-V 500 17.0 CSIR R •
451.00.3421 GX23TB 5/8 F 23.20 368 677 1730 1.89 2083 C-V 500 17.0 CSIR R •
• 451.00.3422 GS26TB 3/4 F 25.93 392 771 2071 2.09 1011 C-V 887 22.7 CSIR R •
451.00.3423 GS30TB 7/8 F 29.95 317 785 2452 2.33 3020 C-V 887 22.7 CSR R •
• 451.00.3424 GS34TB 1 F 34.42 476 1068 2852 2.28 3421 C-V 887 22.7 CSR R •



Private Picture Copyright : WWW.MBSM.PRO

BAJA presión					serie LBP										R-134a				
CÓDIGO REMLE	MODELO	Potencia	Enfri.	Cilindr.	Producción Frigorífica en Watts.								Expansión	Acelte cm3	Peso Kg.	Motor	Arranque	220-240V/50Hz	
• Gases sustitutos del R-12 y R-134a.					CECOMAF (W)														
• Últimas existencias					-35	-30	-25				-10								
					w	COP													
• 451.00.3301	GD40AAa / GVV40AA	1/10	S	4.03	34	49	70	0.77	154	C	200	6.7	RSIR	P	•				
• 451.00.3202	GD40AA	1/10	S	4.03	34	49	70	0.77	154	C	200	6.7	RSIR	P	•				
• 451.00.3302	GL45AA / GVV44AA	1/8	S	4.55	37	56	81	0.81	183	C	265	8.3	RSIR	P	•				
• 451.00.3303	GL60AA / GVV57AA	1/6	S	5.99	50	75	107	0.85	238	C	265	9.1	RSIR	P	•				
• 451.00.3304	GL75AA / GVV66AA	1/5	S	6.65	57	85	121	0.87	267	C	345	9.6	RSIR	P	•				
• 451.00.3305	GL80AA / GVV75AA	1/5	S	7.52	68	101	144	0.89	326	C	345	9.9	RSIR	P	•				
• 451.00.3104	GL80AAb	1/5	OC	8.10	68	101	144	0.89	326	C-V	345	9.9	CSIR	R	•				
• 451.00.3005	GL90AA	1/4	S	9.08	82	119	165	0.90	350	C	345	10.2	RSIR	P	•				
• 451.00.3306	GL90AAa / GQY80AT	1/4	S	9.08	82	119	165	0.90	350	C	345	10.2	RSIR	P	•				
• 451.00.3105	GL90AAb	1/4	OC	9.08	82	119	165	0.90	350	C-V	345	10.2	CSIR	R	•				
• 451.00.3205	GL90AAb	1/4	F	9.08	82	119	165	0.90	350	C-V	345	10.2	CSIR	R	•				
• 451.00.3325	GL90AAa	1/4	OC	9.08	82	119	165	0.90	350	C-V	345	10.2	CSIR	R	•				
• 451.00.3106	GP12BB	1/3	OC	12.00	83	131	190	0.88	424	C	400	11.5	RSIR	R	•				
• 451.00.3206	GP12FB	1/3	F	12.00	83	131	190	0.88	424	C	400	11.5	RSIR	R	•				
• 451.00.3326	GP12BB	1/3	OC	12.00	83	131	190	0.88	424	C	400	11.5	RSIR	R	•				
451.00.3218	GP14CB	3/8	F	14.17	99	158	228	0.90	509	C	400	11.5	RSIR	R	•				
451.00.3223	GP16FB	3/8	F	16.15	109	182	266	0.89	585	C-V	530	12.0	CSIR	R	•				
451.00.3224	GX18FB	3/7	F	18.40	123	199	291	0.91	660	C-V	500	15.1	CSIR	R	•				
451.00.3225	GX21FB	2/3	F	20.72	151	243	351	0.93	778	C-V	500	15.5	CSIR	R	•				

Private Picture Copyright : WWW.MBSM.PRO

ALTA - MEDIA presión					serie HMBP										R-134a				
CÓDIGO REMLE	MODELO	Potencia	Enfriamiento	Cilindrada	Producción Frigorífica en Watts.								Expansión	Acelte cm3	Peso Kg.	Motor	Arranque	220-240V/50Hz	
• Gases sustitutos de R-12 y R-134a.					CECOMAF (W)														
• Últimas existencias					-25	-15	5				10								
					w	COP													
• 451.00.3403	GL45TB	1/6	F	4.50	76	134	342	1.62	412	C-V	300	8.4	CSIR	R	•				
• 451.00.3503	GL45PB	1/6	F	4.50	76	134	342	1.62	412	C-V	300	8.4	CSIR	R	•				
• 451.00.3404	GL60TB	1/5	F	5.67	95	170	437	1.82	527	C-V	300	9.5	CSIR	R	•				
• 451.00.3504	GL60PB	1/5	F	5.67	95	170	437	1.82	527	C-V	300	9.5	CSIR	R	•				
451.00.3406	GL80TB	1/5	F	7.57	111	212	554	1.83	667	C-V	300	9.5	CSIR	R	•				
• 451.00.3505	GL90TB	1/4	F	8.85	142	259	661	1.91	796	C-V	300	10.8	CSIR	R	•				
• 451.00.3506	GP12TB	3/8	F	12.05	169	338	893	1.80	1077	C-V	350	11.2	CSIR	R	•				
• 451.00.3418	GP14TB	3/8	F	14.00	190	373	999	1.77	1208	C-V	400	11.5	CSIR	R	•				
• 451.00.3513	GP14TB	3/8	F	14.00	190	373	999	1.77	1208	C-V	400	11.5	CSIR	R	•				
451.00.3419	GX18TB	1/2	F	18.40	285	539	1390	1.91	1673	C-V	500	16.0	CSIR	R	•				
451.00.3420	GX21TB	5/8	F	20.72	332	603	1550	1.90	1866	C-V	500	17.0	CSIR	R	•				
451.00.3421	GX23TB	5/8	F	23.20	368	677	1730	1.89	2083	C-V	500	17.0	CSIR	R	•				
• 451.00.3422	GS26TB	3/4	F	25.93	392	771	2071	2.09	1011	C-V	887	22.7	CSIR	R	•				
451.00.3423	GS30TB	7/8	F	29.95	317	785	2452	2.33	3020	C-V	887	22.7	CSR	R	•				
• 451.00.3424	GS34TB	1	F	34.42	476	1068	2852	2.28	3421	C-V	887	22.7	CSR	R	•				

Private Picture Copyright : WWW.MBSM.PRO

BAJA presión					serie LBP										R-600a			
CÓDIGO REMLE	MODELO	Potencia	Enfriamiento	Cilindrada	Producción Frigorífica en Watts.								Expansión	Acelte cm3	Peso Kg.	Motor	Arranque	220-240V/50Hz
					-35	-30	-25	-23.3	-20	-15	-10							
451.00.0605	HQY55AA	1/9	S	5.46	28	44	62	69	83	105	130	C	210	8.9	RSIR/RSCR	P	•	
451.00.0610	HQY70AA	1/8	S	6.64	42	59	80	88	104	131	161	C	210	9.0	RSIR/RSCR	P	•	
451.00.0615	HLY99AA	1/6	S	9.93	69	90	119	130	155	198	248	C	345	9.6	RSIR/RSCR	P	•	
451.00.0620	HPY12AA	1/5	S	12.10	79	107	143	157	187	239	299	C	300	10.7	RSIR/RSCR	P	•	
451.00.0625	HPY14AA	1/5	S	14.31	92	124	165	181	215	274	342	C	300	11.0	RSIR/RSCR	P	•	
451.00.0630	HPY16AA	1/4	S	16.14	102	136	180	198	236	302	379	C	300	11.2	RSIR/RSCR	P	•	

Private Picture Copyright : WWW.MBSM.PRO

ALTA - MEDIA presión **serie HMBP** **R-22**

CÓDIGO REMLE	MODELO	Potencia	Enfriamiento	Cilindrada	Producción Frigorífica en Vatios.								Expansión	Aceite cm3	Peso Kg.	Motor	Arranque	220-240V/50Hz
					-20	-15	-10	-5	0	5	7.2	10						
451.00.1404	L45TN	1/5	F	4.50	157	206	265	333	410	496	537	592	C-V	400	9.5	CSIR	P	•
451.00.1405	L57TN	1/4	F	5.67	194	255	327	410	505	610	660	727	C-V	300	9.5	CSIR	R	•
451.00.1428	L76TN	3/8	F	7.57	268	347	441	550	675	814	881	969	C-V	470	10.0	CSIR	R	•
451.00.1408	L88TN	3/8	F	8.85	523	416	527	658	806	973	1052	1159	C-V	400	10.6	CSIR	R	•
451.00.1409	P12TN	1/2	F	12.00	412	537	689	868	1075	1309	1421	1570	C-V	400	12.3	CSR	R	•
451.00.1416	S22TN	7/8	F	21.77	645	890						3000	C-V	887	22.7	CSR	R	•
451.00.1418	S26TN	1 1/4	F	25.93	857	1182	1561	1993	2480	3021	3275	3615	C-V	887	22.7	CSR	R	•

Private Picture Copyright : WWW.MBSM.PRO

ALTA - MEDIA presión **serie HMBP** **sustituto del R-404a - R507 (*)**

220-240V 50Hz

CÓDIGO REMLE	MODELO	CV	Enfr.	Cil. cm3	Int. A	Conex.		Conex. aspir. Rotalock	Rendimientos (Wattios)*				Aplic.
						ODF	Rotalock		+7,2	-0°C	-5°C	-10°C	
451.00.0299	ML40TB	1/6	F	4.04	2,03	1/4"	-	3/16"	516	387	320	260	C-V
451.00.0300	ML45TB	1/5	F	4.50	2,19	1/4"	-	3/16"	559	432	356	289	C-V
451.00.0305	ML60TB	1/4	F	5.67	2,77	1/4"	-	3/16"	686	525	428	343	C-V
451.00.0310	ML80TB	3/8	F	7.57	3,27	1/4"	-	3/16"	931	720	590	475	C-V
451.00.0315	ML90TB	3/8	F	8.85	3,98	1/4"	-	3/16"	1118	861	705	569	C-V
451.00.0321	MP12RB	1/2	F	12.00	3,80	5/16"	-	1/4"	1765	1379	1142	931	C-V
451.00.0323	MP14RB	1/2	F	14.00	4,86	5/16"	-	1/4"	1765	1379	1142	931	C-V
451.00.0325	MX18TB	7/8	F	18.12	6,50	3/8"	-	1/4"	2275	1719	1379	1078	C-V
451.00.0326	MX21TB	1	F	21,74	6,28	3/8"	-	1/4"	2745	2063	1645	1275	C-V
451.00.0327	MS26TB-V	1 3/8	F	25.95	8,97	5/8"	1" 5/8"R	5/16"	3382	2578	2085	1647	C-V
451.00.0328	MA34TB-V	1 5/8	F	34,42	11,50	5/8"	1" 5/8"R	5/16"	4450	3480	2870	2310	C-V

Private Picture Copyright : WWW.MBSM.PRO

BAJA presión **serie LBP** **sustituto del R-404a - R507 (*)**

220-240V 50Hz

CÓDIGO REMLE	MODELO	CV	Enfr.	Cilindr. cm3	Int. A	Conex. aspir.		Conex. descar. ODF	Rendimientos (Wattios)*			Aplic.
						ODF	Rotalock		-35°C	-25°C	-10°C	
451.00.0450	ML45FB	1/6	F	4,60	1,58	1/4"	-	3,16"	70	130	270	C-V
451.00.0455	ML60FB	1/5	F	6,00	1,77	1/4"	-	3,16"	100	180	340	C-V
451.00.0460	ML80FB	1/4	F	8,10	2,21	1/4"	-	3,16"	140	250	490	C-V
451.00.0465	ML90FB	1/3	F	8,85	2,24	1/4"	-	3/16"	150	280	530	C-V
451.00.0470	MP12FB	3/8	F	12,00	2,88	3/8"	-	1/4"	170	350	720	C-V
451.00.0471	MP14FB	1/2	F	14,00	3,38	3/8"	-	1/4"	200	400	850	C-V
451.00.0472	MPT14LA®	1/2	F	14,32	2,70	3/8"	-	1/4"	360	550	1000	C-V
451.00.0473	MX18FBa	5/8	F	18,20	2,97	3/8"	-	1/4"	210	510	1160	C-V
451.00.0474	MX23FB	7/8	F	23,20	3,78	3/8"	-	1/4"	380	720	1450	C-V
451.00.0475	MS26FB-V	3/4	F	26,15	4,72	5/8"	1" 5/8"R	5/16"	360	820	1570	C-V
451.00.0476	MS30FB-V	7/8	F	30,00	5,60	5/8"	1" 5/8"R	5/16"	420	940	1900	C-V
451.00.0477	MS34FB-V	1	F	34,25	6,68	5/8"	1" 5/8"R	5/16"	480	1090	2230	C-V

Private Picture Copyright : WWW.MBSM.PRO

FRÍO DOMÉSTICO / COMERCIO

ALTA - MEDIA presión

serie HMBP

CÓDIGO REMLE	MODELO	Potencia	Enfriam.	Cilind.	Producción Frigorífic en Watts.										Expans.	Aceite cm3	Peso Kg.	Motor	Arranq.	Modelos MIX Sustitutos R-12 / 134a
Últimas existencias					-25	-20	-15	-10	-5	0	5	7.2	10	Sustitutos R-12 / R134a						
451.00.0403	L45PX	1/6	F	4.50	77	101	132	169	214	266	325	353	390	C	300	8.4	RSIR	R	GL45PB	451.00.3503
451.00.0404	L57PX	1/5	F	5.67	98	130	171	221	279	346	421	457	505	C	300	9.5	RSIR	R	GL60PB	451.00.3504
451.00.0405	L88TY	1/4	F	8.85	165	215	277	351	437	535	645	697	767	C-V	400	11.2	CSIR	R	GL90TB	451.00.3505
451.00.0406	P12TY	3/8	F	12.00	209	274	357	458	577	714	869	943	1043	C-V	400	11.2	CSIR	R	GP12TB	451.00.3506
451.00.0412	S26TY	7/8	F	25.93	392	565	771	1011	1284	1591	1930	2090	2303	C-V	887	22.7	CSIR	R	GS26TB-V	451.00.3422
451.00.0413	P14TY	7/16	F	14.00	243	318	412	526	659	812	983	1065	1174	C-V	400	11.5	CSIR	R	GP14TB	451.00.3513
451.00.0417	S34TY	1 1/5	F	34.42	644	886	1172	1501	1873	2289	2748	2963	3249	C-V	887	22.7	CSIR	R	GS34TB-V	451.00.3424

Private Picture Copyright : WWW.MBSM.PRO



BAJA presión

serie LBP

CÓDIGO REMLE	MODELO	Potencia	Enfriam.	Cilind.	Producción Frigorífic en Watts.								Expans.	Aceite cm3	Peso Kg.	Motor	Arranq.	Modelos MIX Sustitutos R-12 / 134a
Últimas existencias					-35	-30	-25	-23.3	-20	-15	-10	Sustitutos R-12 / R134a						
451.00.0202	D40AS	1/10	S	4.00	40	56	74	81	96	121	149	C	240	6.7	RSIR	P	GD40AAa	451.00.3301
451.00.0002	L45AV	1/8	S	4.50	39	57	79	87	105	136	171	C	300	8.4	RSIR	R	GL45AA	451.00.3302
451.00.0003	L55AV	1/6	S	5.47	49	73	101	112	134	171	211	C	470	9.5	RSIR	R	GL60AA	451.00.3303
451.00.0004	L76AV	1/5	S	7.57	58	89	125	139	168	217	271	C	530	10.5	RSIR	R	GL75AA	451.00.3304
451.00.0104	L76BV	1/5	OC	7.57	58	89	125	139	168	217	271	C	530	10.5	RSIR	R		
451.00.0005	L88AV	1/4	S	8.85	69	107	150	167	200	255	317	C	530	11.0	RSIR	R	GL80AA	451.00.3305
451.00.0105	L88BV	1/4	OC	8.85	69	107	150	167	200	255	317	C	530	11.0	RSIR	R	GL90AAa OC	451.00.3325
451.00.0205	L88FW	1/4	F	8.85	69	107	150	167	200	255	317	C-V	530	10.0	RSIR	R	GL90AAb	451.00.3205
451.00.0106	P12BW	1/3	OC	12.00	79	132	192	215	261	337	422	C	530	11.5	RSIR	R	GP12BB OC	451.00.3326
451.00.0206	P12FW	1/3	F	12.00	79	132	192	215	261	337	422	C-V	530	11.5	RSIR	R	GP12FB	451.00.3206

Private Picture Copyright : WWW.MBSM.PRO

Compresor GQY80AT, freon R134a, capacitate 8.1 cmc, capacitate frigorifica ASHRAE 222 W, capacitate frigorifica CECOMAF 165 W, racire statica #GQY80AT

Model: GQY80AT

Freon: R134a

Capacitate: 8.1 cmc

Capacitate frigorifica ASHRAE: 222 W

Capacitate frigorifica CECOMAF: 165 W

Racire : statica



Private Picture Copyright : WWW.MBSM.PRO

ELECTROLUX, CUBIGEL, Compresseur, GL90TB, R-134a, 1 / 4HP++ (big), 230V, RSCR, HMBP

Category: compressor

written by www.mbsm.pro | 31 January 2026



Private Picture Copyright : WWW.MBSM.PRO

 **Electrolux**
COMPRESSORS

GL90BH 03011
220 - 240 V ~ 50 Hz

R134a



 7625
0008146

Compressor ELECTROLUX \ CUBIGEL GL90TB

Substitutes for this compressor are: [Aspera NEK6170Z](#) , Danfoss/Secop FR10G , L'Unite Hermetique/Tecumseh AE4430Y

Refrigerant	R134A
Working range [C]	-25 to +10
Power supply	220V 50Hz
Engine type	CSIR
Power [HP]	1/4
Cylinder capacity [cm³]	8,9
Weight [kg]	10,8

Refrigerant: R134A



Private Picture Copyright : WWW.MBSM.PRO



Private Picture Copyright : WWW.MBSM.PRO

Type: Compresseurs à pistons hermétiques

Producteur: ACC

Série: HMBP

Modèle: GL90BH

Données GENERALES

Réfrigérant: R134a
Élément de décharge: C
Refroidissement: 0C
Température ambiante maximale [°C]: 43

Données du compresseur

Cylindrée [cm³]: 9,1
Déplacement [m³ / h]: 1,6
Poids [kg]: 11,1
Charge d'huile [cm³]: 470
Type d'huile: ISO VG 19 ESTER

Données du moteur

Type de moteur: RSCR
Puissance [KM]: 1/4
Élément de départ: LST
Source de courant: 220V 50Hz
Gamme de tension: 187-264
Courant rotor bloqué [A]: 13,8
Résistance d'enroulement en marche (25 ° C) [Ω]: 8,97
Résistance d'enroulement de démarrage (25 ° C) [Ω]: 18,05

Données électriques

Relais: 3003
Élément de blindage:
Volume du condensateur de démarrage [µF]: 6/400

Connexions

	millimètres	pouces
Le tube d'aspiration:	6,5	
Tube de service:	6,5	
Tube de décharge:	4,9	
Tube de refroidisseur d'huile:		4,9

[Mbsm_dot_pro_private_PDF_Cubigel_Brochure_-320102MTélécharger](#)

[Mbsm_dot_pro_private_PDF_compresseur-acc-cubigell-gl90tbTélécharger](#)

Capacité de refroidissement [W]

t _c \ t _e	-35	-30	-25	-20	-15	-dix
40	114	162	218	282	355	435
45	104	148	200	261	330	407
50	93	134	183	240	305	379
55	82	119	165	219	281	351

60 72 105 147 198 256 323

Puissance absorbée [W]

$t_c \backslash t_e$	-35	-30	-25	-20	-15	-dix
40	123	145	167	189	212	235
45	122	145	168	192	216	240
50	121	145	170	195	220	245
55	120	145	171	197	223	250
60	119	146	173	200	227	255

Actuel [A]

$t_c \backslash t_e$	-35	-30	-25	-20	-15	-dix
40	0,64	0,75	0,85	0,95	1,05	1,14
45	0,63	0,74	0,86	0,96	1,06	1,16
50	0,62	0,74	0,86	0,97	1,08	1,18
55	0,61	0,74	0,86	0,98	1,09	1,20
60	0,60	0,73	0,86	0,99	1,10	1,22

Débit massique [kg / s]

$t_c \backslash t_e$	-35	-30	-25	-20	-15	-dix
40	0,55	0,85	1,23	1,68	2,20	2,80
45	0,48	0,77	1,14	1,58	2,09	2,67
50	0,41	0,69	1,04	1,47	1,97	2,54
55	0,34	0,61	0,95	1,36	1,85	2,41
60	0,27	0,52	0,86	1,26	1,73	2,28

COP [W / W]

$t_c \backslash t_e$	-35	-30	-25	-20	-15	-dix
40	0,93	1,12	1,31	1,49	1,67	1,85
45	0,85	1,02	1,19	1,36	1,53	1,70
50	0,77	0,92	1,08	1,23	1,39	1,55
55	0,69	0,82	0,96	1,11	1,26	1,40
60	0,60	0,72	0,85	0,99	1,13	1,26

Conditions de fonctionnement: ASHRAE

t_c – Température de condensation [°C]

t_e – Température d'évaporation [°C]

[Mbsm_dot_pro_private_PDFGL90BHTélécharger](#)

[Mbsm_dot_pro_private_PDF__GL90BHTélécharger](#)

[Mbsm_dot_pro_private_PDF_danfoss_GL90TG_R134a_230_60](#)

Mbsm.pro, GL90TB , COMPRESSEUR ACC

CUBIGEL ELECTROLUX, R134A ,1/4HP 230V

Category: Solutions,Tester ok
written by Jamila | 31 January 2026



PictureS Mbsm Dot Pro : www.mbsm.pro

Mbsm.pro, GL90TB , COMPRESSEUR ACC CUBIGEL ELECTROLUX, R134A ,1/4HP 230V

- Puissance en cheval 1/4 CV
- Alimentation 220-240 V 50 Hz
- Gaz R134a HMBP
- Cylindrée du compresseur 8,8 cm³
- Température d'utilisation max. 32°C
- Complet avec starter, condensateur, boîtier et système de fixation

La photo montre l'aspect du compresseur, pas son étiquette réelle



PictureS Mbsm Dot Pro : www.mbsm.pro

Codes fabricants

- ACC-GL90TB
- ALPENINOX-83718
- ANGELO PO-34D6510
- CEM-340
- CUBIGEL-GL90TB
- DEXION-022260-00
- ELECTROLUX-83718
- FRIULINOX-995783
- ICEMATIC-19165548
- MARENO-25016599
- MONDIAL ELITE-4106073

- MONDIAL ELITE-4106073+1147212
- NECTA VENDING-986934
- ZANUSSI-83718

Documentation technique du compresseur frigorifique Cubigel **regarder en dessous**

