

Mitsubishi, Electric, fixed
frequency, NH41VNHT 2.55HP, single-
phase, 220V, rotary, air condition,
26000 btu/h

Category: expertise

written by Amina | 22 October 2023



SIAM COMPRESSOR INDUSTRY

MITSUBISHI ELECTRIC CO.

REFRIGERANT COMPRESSOR

MODEL **NH41VNHT**

MANUFACTURING DATE 16092016

POWER SOURCE
220-240V 1~ 50Hz

POWER INPUT 2410 W AT 50 Hz

LRA 70/77 A

REFRIGERANT R-22

OIL 1.30 L

AP 2.74 MPa

SP 10.5 MPa

THERMALLY PROTECTED

Mitsubishi, Electric, fixed frequency, NH41VNHT 2.55HP, single-phase, 220V, rotary, air condition, 26000 btu/h

Compressor, Zanussi, HLY80AA, 1/7Hp, 220-240V 50Hz ~1, R600a, ZEM, Low Back Pressure, RSIR

Category: compressor

written by www.mbsm.pro | 22 October 2023



Private Picture Copyright : WWW.MBSM.PRO

Technical Data Sheet

Compressor model HLY80AAa

Voltage 220-240V 50Hz ~1

Refrigerant R600a

APPLICATION COMPRESSOR MOTOR

Application Low Back Pressure Displacement 8,10 cm³ Nominal Power 1/7 hp

Refrigerant R600a Diameter 24,29 mm Voltage/Frequency 220-240V 50Hz
Evaporating Temp. -35,0 °C to -10,0 °C Stroke 17,47 mm Voltage range 187-264 V
Expansion Capillar Net Weight 9,45 Kg Type RSIR
Comp. Cooling Static Oil type ISO VG 10 MINER Phase number 1 PH
Max. ambient temp. 43,0 °C Oil charge 205 cm³ Locked Rotor Amps (LRA) 8,60 A
Max. Cont. Current (MCC) 1,00 A
Main W. resist. at 25°C 22,02 Ω
Start W. resist. at 25°C 22,53 Ω

NOMINAL PERFORMANCE

ASHRAE CECOMAF

Cooling Capacity 113 kCal/h 99 W
COP 1,41 W/W 1,11 W/W
EER 1,22 kCal/Wh 0,96 kCal/Wh
Input Power 93 W 89 W
Current 0,62 A 0,60 A

TEST CYCLE CONDITIONS

ASHRAE CECOMAF

LBP (B) LBP (A)

Evaporating temp. -23,3 °C -25,0 °C
Condensing temp. 55,0 °C 55,0 °C
Liquid temp. 32,0 °C 55,0 °C
Ambient temp. 32,0 °C 32,0 °C
Suction temp. 32,0 °C 32,0 °C
Voltage/Frequency 220 V 50 Hz 220 V 50 Hz

ELECTRICAL COMPONENTS

Relay Option 1

Reference PTC K100

Voltage 200-240 V

Resistance 14.00 Ω

Protector Option 1 Option 2 Option 3 Option 4

Reference MSP318LZ 4TM189NFBYY T0462 AE37FJ

Current 5,90 A 5,50 A 6,20 A 5,90 A

Time check 7,5-14 seg 5-15 seg 7,5-14 seg 7,5-14 seg

Disc temp. (Open/Close) 120,00 / 61,00 °C 120,00 / 61,00 °C 110,00 / 62,00 °C
115,00 / 62,00 °C

Mbsm_dot_pro_private_PDF_HLY80aa_danfoss_HLY80AAa_R600a_220_50Télécharger



Private Picture Copyright : WWW.MBSM.PRO



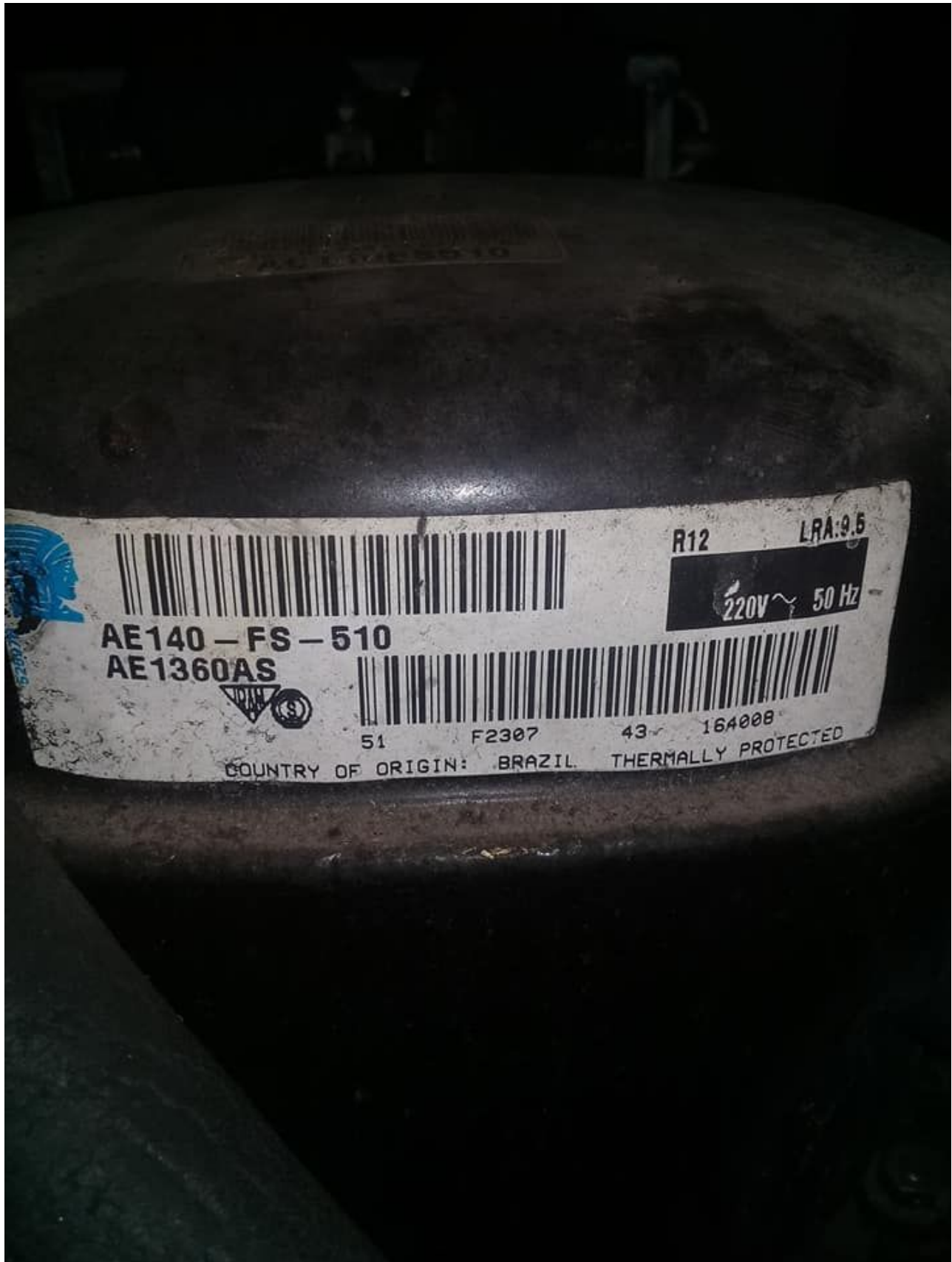
Private Picture Copyright : WWW.MBSM.PRO

smart

TECUMSEH EUROPE, COMPRESSEUR,
REFROIDISSEUR, AE1360AS, 1/5 HP,
AE140-FS-510, Lra 9.5, LBP, R12,
220-240V ~ 50Hz

Category: compressor

written by www.mbsm.pro | 22 October 2023



Private Picture Copyright : WWW.MBSM.PRO

Model:AE1360AS

Product Description

Type: Reciprocating

Application: LBP – Low Back Pressure

Refrigerant: R12

Voltage/Frequency: 220-240V ~ 50Hz

Product Specifications

Performance

Refrigeration Capacity Input Power Efficiency

EVAP

TEMP COND AMBIENT RETURN LIQUID

Condition TEMP TEMP GAS TEMP

Test

Voltage Btu/h kcal/h W W Btu/Wh kcal/Wh W/W

ASHRAE

240V ~

50HZ 560 141 164 157 3.57 .9 1.05

-23°C (-

10°F) 54°C (130°F) 32°C (90°F) 32°C (90°F) 32°C (90°F)

General

Evaporating Temp. Range: -34.4°C to -12.2°C (-30°F to 10°F)

Motor Torque:

Low Start Torque

(LST)

Compressor Cooling: Static

Mechanical

Weight: 10.231

Weight Unit of Measure: KG

Displacement (cc): 7.55

Oil Type: N/A

Viscosity (cSt): N/A

Oil Charge (cc): N/A

Electrical

Voltage Range (50 Hz): 198-253

Voltage Range (60 Hz): N/A

Locked Rotor Amps (LRA): 11

Rated Load Amps (RLA 50 Hz): 1.12

Rated Load Amps (RLA 60 Hz): N/A

Max. Continuous Current (MCC in Amps): N/A

Motor Resistance (Ohm) – Main: 11.06

Motor Resistance (Ohm) – Start: 44.87

Motor Type: RSIR

Overload Type: N/A

Relay Type: Current Relay



Private Picture Copyright : WWW.MBSM.PRO

Mbsm_dot_pro_private_PDF_AE1360ASTélécharger
Mbsm_dot_pro_private_PDF_AE1360AS-1Télécharger
Mbsm_dot_pro_private_PDF_AE1360AS-2Télécharger

Compressor ELECTROLUX, CUBIGEL
,GP12TB ,Hermetic piston ,ACC ,HMBP ,
moteur HP , 3/8 HP++, 1/2 hp- , 1PH ,
R134A , Pression 1.7 Bar , 220V

Category: compressor,Technologie,Tester ok
written by www.mbsm.pro | 22 October 2023

	Model	Refr.	HP
▶ <input type="checkbox"/>	<u>GL45PB</u>	HMBP::R134a	1/6
▶ <input type="checkbox"/>	<u>GL45PB</u>	HMBP::R134a	1/6
▶ <input type="checkbox"/>	<u>GL45TB</u>	HMBP::R134a	1/6
▶ <input type="checkbox"/>	<u>GL60PB</u>	HMBP::R134a	1/5
▶ <input type="checkbox"/>	<u>GL60TB</u>	HMBP::R134a	1/5
▶ <input type="checkbox"/>	<u>GL80PB</u>	HMBP::R134a	1/5
▶ <input type="checkbox"/>	<u>GL80TB</u>	HMBP::R134a	F
▶ <input type="checkbox"/>	<u>GL90TB</u>	HMBP::R134a	1/4
▶ <input type="checkbox"/>	<u>GP12TB</u>	HMBP::R134a	3/8

Picture5 Mbsm Dot Pro : www.mbsm.pro

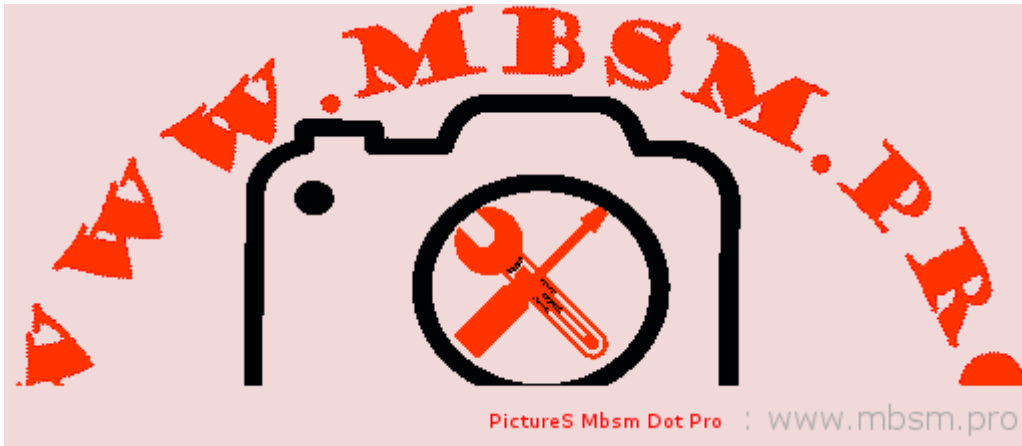
Private Picture Copyright : WWW.MBSM.PRO

Compressor ELECTROLUX, CUBIGEL GP12TB ,Hermetic piston ,ACC ,HMBP , moteur HP , 3/8 HP , 1PH , R134A , Pression 1.7 Bar

PREFIXES , CONVERSION , FACTORS

Category: Technologie

written by www.mbsm.pro | 22 October 2023



PREFIXES , CONVERSION ,FACTORS

www.mbsm.pro , Full Form of Short Answer , Electric , climatisation , Terms

Category: Solutions,Technologie

written by www.mbsm.pro | 22 October 2023

FULL FORM OF SHORT ANSWER

HVAC	- heat ventilation air conditioner
AHU	- Air handling unit
FCU	- Fan coil unit
CSU	- Ceiling suspended unit
PAC	- Precession air condition
BMS	- Building management system
BTU	- British thermal unit
PSI	- Pound square inches
TR	- Tonnage of refrigerant
CFM	- Cubic feet per minute
VFD	- Variable frequency drive
VCD	- Volume control damper
VAV	- Variable adjustable valve
VRF	- Variable refrigerant flow
RPM	- Revolution per Munit
VRV	- Variable refrigerant valve
UPS	- Uninterrupted power supply
KW	- kilo watt
KVA	- Kilo volt amps
AC	- Alternative current
DC	- Direct current
DOL	- Direct on line
DB	- Distribution board
ACB	- Air circuit breaker
PCB	- Printed circuit board
PLC	- Programming logic control
MCCB	- Molded case circuit breaker
MCB	- Miniature circuit breaker
ELCB	- Earth leakage circuit breaker.
STP	- Sewage treatment plant
CCTV	- Closed circuit television

PictureS Mbsm Dot Pro : www.mbsm.pro

www.mbsm.pro , Full Form of Short Answer , Electric , climatisation , Terms

Mbsm.pro , L76AV ,Compresseur, 1/5 HP
,149W, R12 ,E80101 ,Zem ,HMBP
,Hermetic piston compressors ,
220V/50 , 1PH(phase)

Category: Solutions,Tester ok
written by Jamila | 22 October 2023



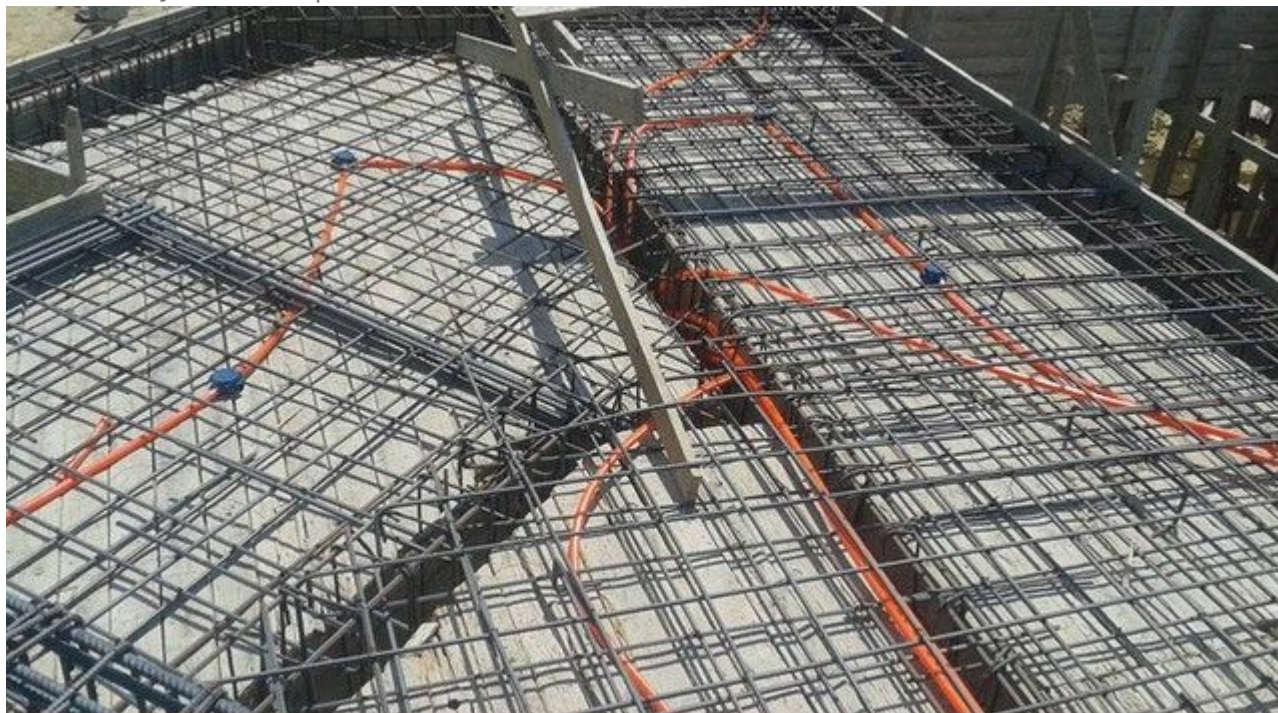
PictureS Mbsm Dot Pro : www.mbsm.pro

Mbsm.pro , L76AV ,Compresseur, 1/5 HP ,149W, R12 ,E80101 ,Zem ,HMBP ,Hermetic piston compressors , 220V/50 , 1PH(phase)

Mbsm.pro,The risk of extending the electric hoses under the reinforcing steel for ceilings

Category: Pictures

written by Jamila | 22 October 2023



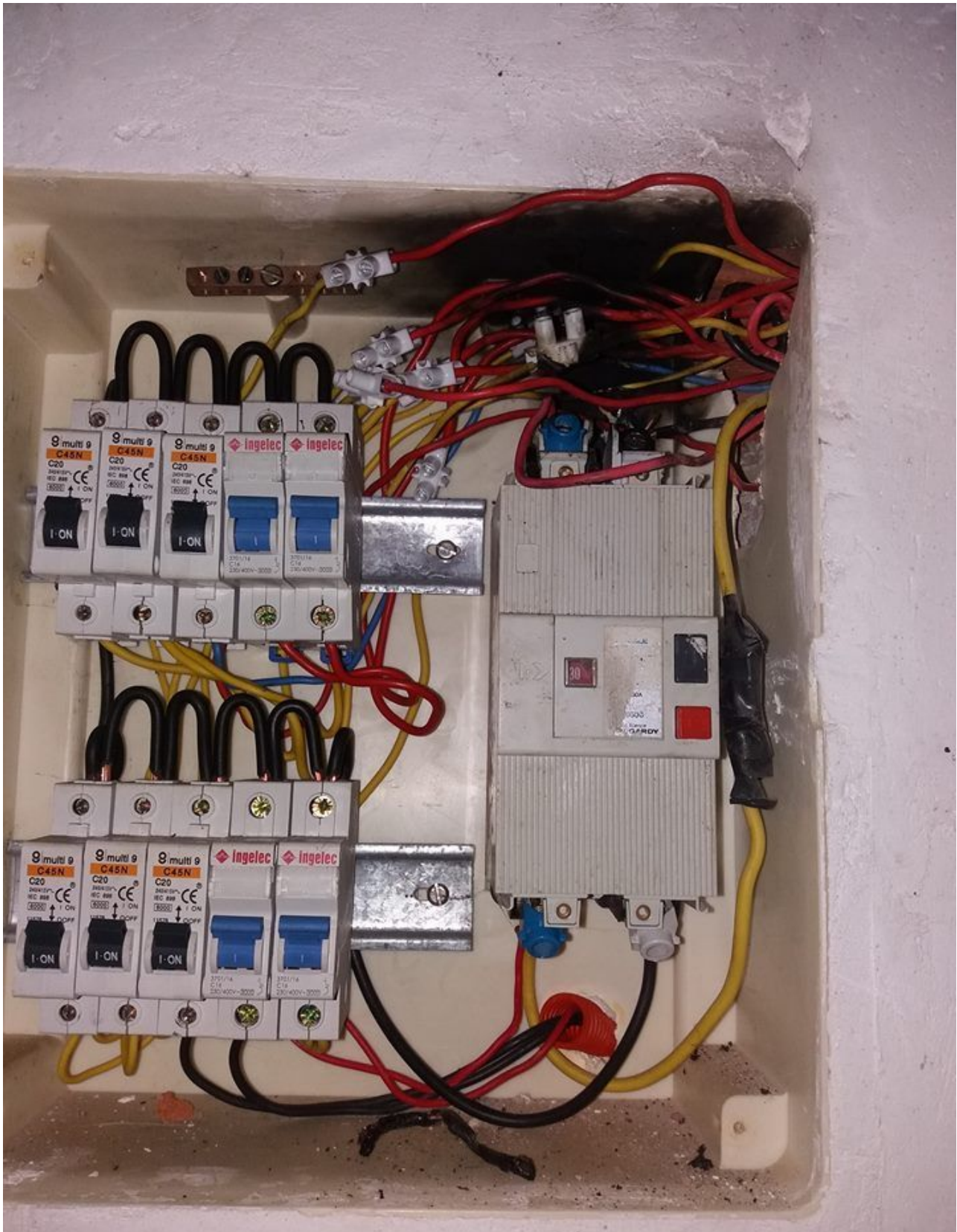
PictureS Mbsm Dot Pro : www.mbsm.pro

Mbsm.pro,The risk of extending the electric hoses under the reinforcing steel for ceilings

www.mbsm.pro , Some Funny Electric pictures part1

Category: Pictures

written by mahdi miled | 22 October 2023



PictureS Mbsm Dot Pro : www.mbsm.pro

Private Picture Copyright : WWW.MBSM.PRO

www.mbsm.pro , Some Funny Electric pictures part1
mbsm-dot-pro-picture-electric -funny1.jpg (37 KB)



PictureS Mbsm Dot Pro : www.mbsm.pro

Private Picture Copyright : WWW.MBSM.PRO

mbsm-dot-pro-picture-electric - funny1.jpg (47 KB)



.PRO



.PRO

mbsm-dot-pro-picture-electric - funny2.jpg (63 KB)



PictureS Mbsm Dot Pro : www.mbsm.pro

Private Picture Copyright : WWW.MBSM.PRO

mbsm-dot-pro-picture-electric - funny2.jpg (73 KB)

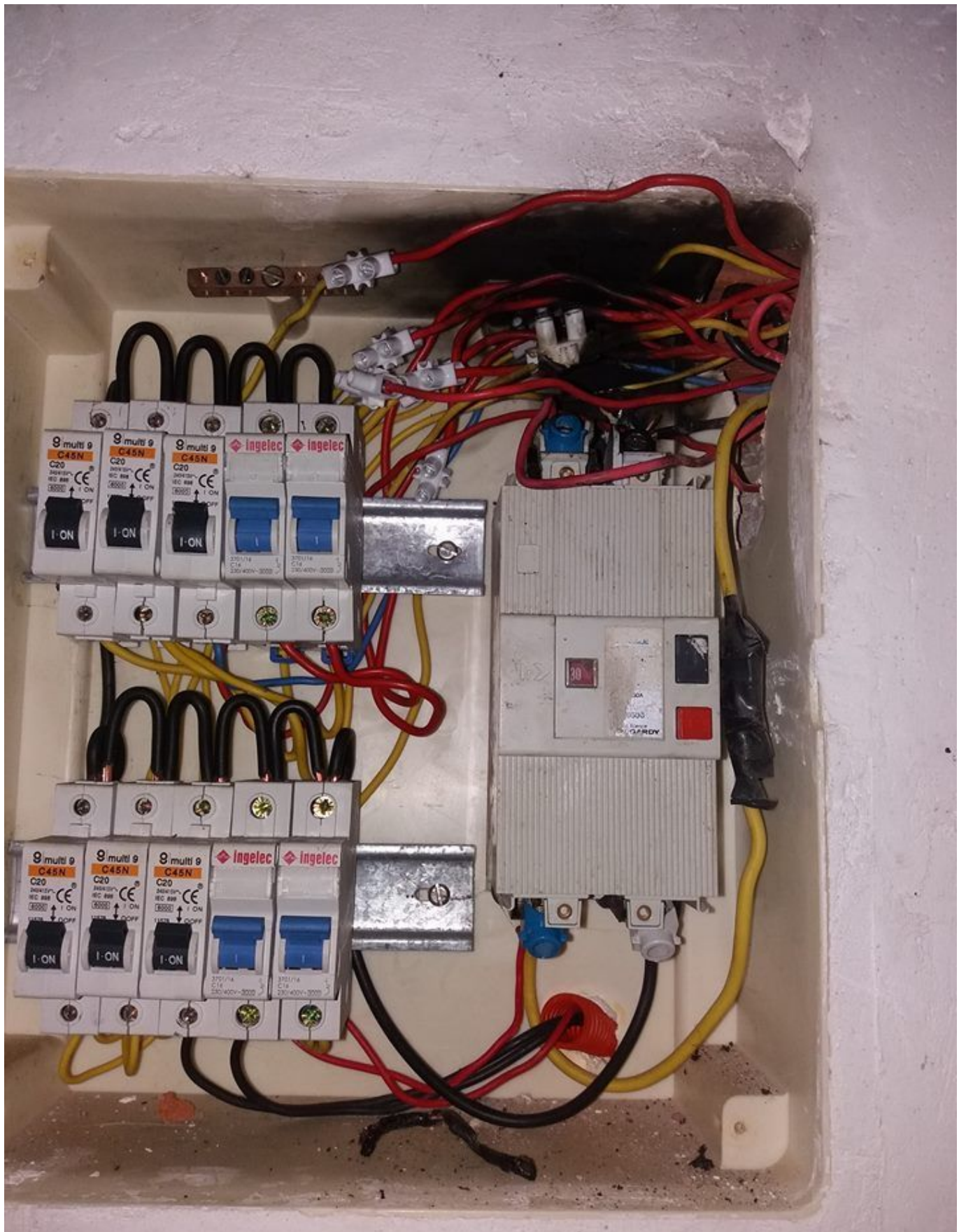


.PRO



.PRO

mbsm-dot-pro-picture-electric - funny3.jpg (121 KB)



PictureS Mbsm Dot Pro : www.mbsm.pro

Private Picture Copyright : WWW.MBSM.PRO

mbsm-dot-pro-picture-electric - funny3.jpg (124 KB)

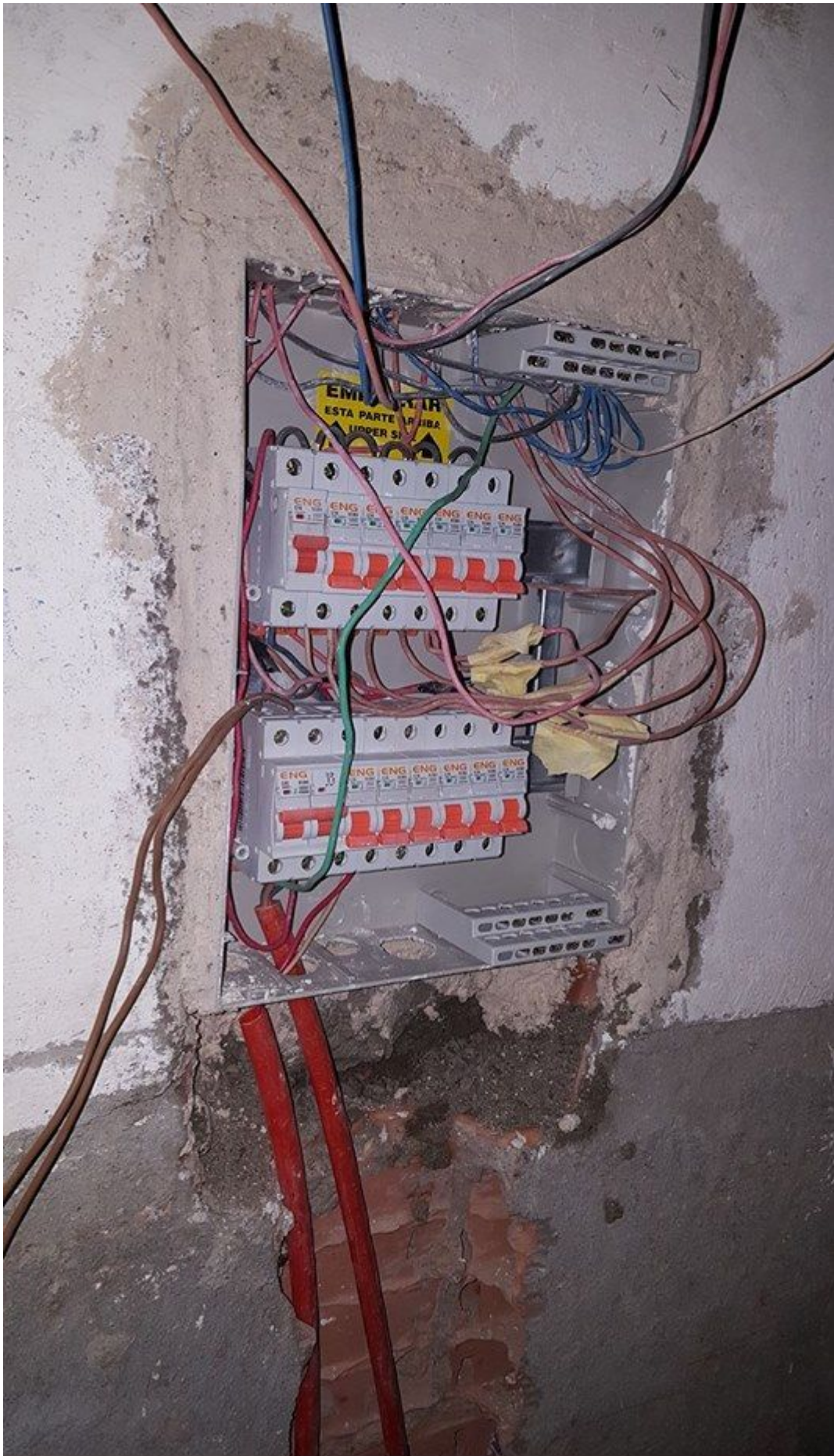


.PRO



.PRO

mbsm-dot-pro-picture-electric -funny4.jpg (145 KB)



PictureS Mbsm Dot Pro : www.mbsm.pro

Private Picture Copyright : WWW.MBSM.PRO

mbsm-dot-pro-picture-electric -funny4.jpg (133 KB)



.PRO



.PRO

mbsm-dot-pro-picture-electric -funny5.jpg (117 KB)



.PRO



.PRO

mbsm-dot-pro-picture-electric -funny6.jpg (23 KB)



PictureS Mbsm Dot Pro : www.mbsm.pro

Private Picture Copyright : WWW.MBSM.PRO

mbsm-dot-pro-picture-electric -funny6.jpg (27 KB)

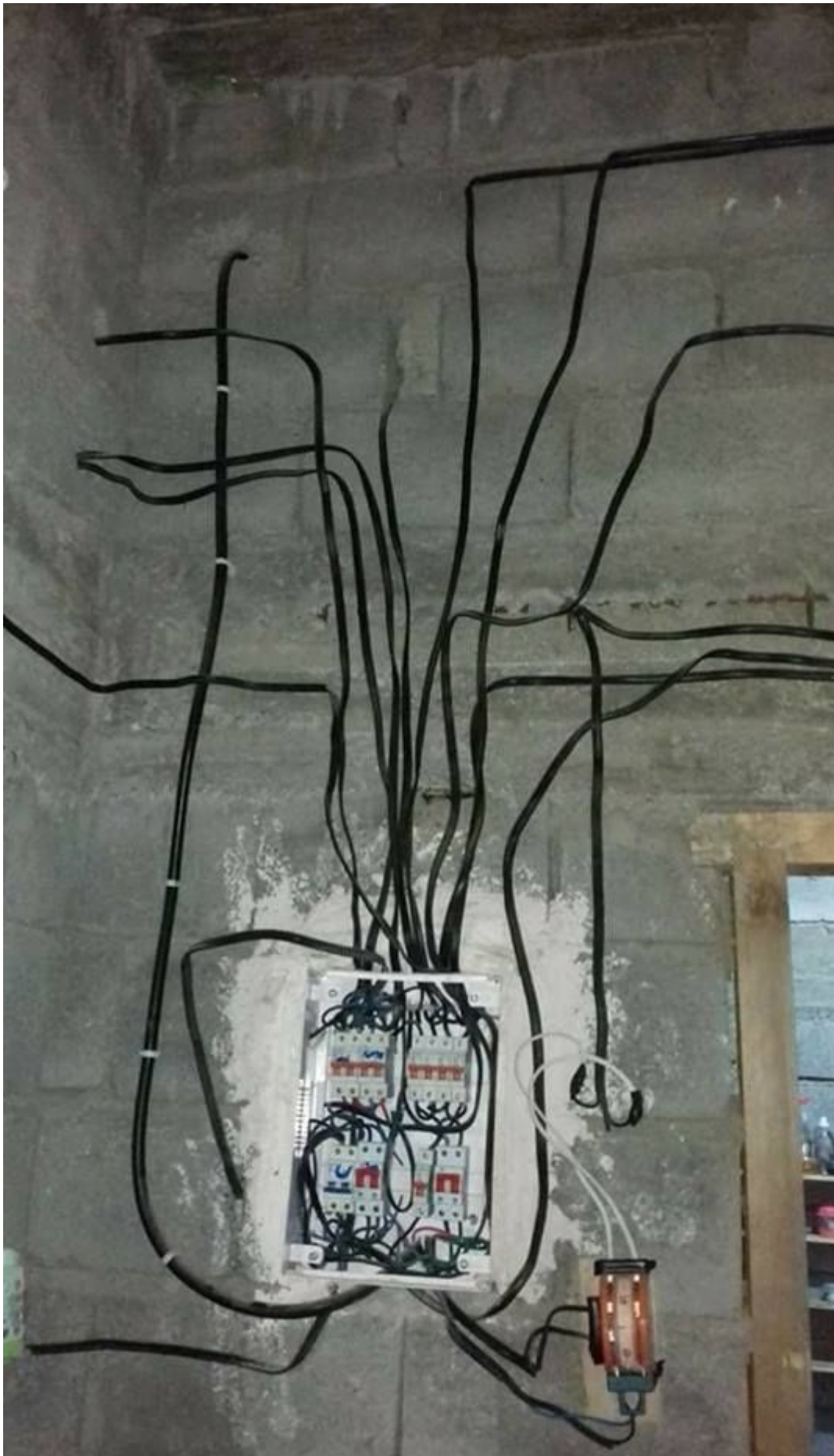


.PRO



.PRO

mbsm-dot-pro-picture-electric -funny7.jpg (62 KB)



PictureS Mbsm Dot Pro : www.mbsm.pro

Private Picture Copyright : WWW.MBSM.PRO

mbsm-dot-pro-picture-electric - funny7.jpg (72 KB)



.PRO



.PRO

mbsm-dot-pro-picture-electric - funny8.jpg (31 KB)



PictureS Mbsm Dot Pro : www.mbsm.pro

Private Picture Copyright : WWW.MBSM.PRO

mbsm-dot-pro-picture-electric - funny8.jpg (33 KB)



.PRO



.PRO