

# Mbsm.pro , Fn77q17g , 1/4Hp , Electrostar , R12 Refrigerator Compressors , 220V/50-60Hz , 1Ph ,for Refrigerator/Freezer

Category: Solutions,Tester ok  
written by Jamila | 28 September 2018



PictureS Mbsm Dot Pro : [www.mbsm.pro](http://www.mbsm.pro)

Mbsm.pro , Fn77q17g , 1/4Hp , Electrostar , R12 Refrigerator Compressors ,  
220V/50-60Hz , 1Ph ,for Refrigerator/Freezer



PictureS Mbsm Dot Pro : [www.mbsm.pro](http://www.mbsm.pro)

- 1)SO60LKAA OR equivalent in 1/10 HP
- 2)FN43Q88G OR equivalent in 1/8 HP
- 3)FN51Q10G OR equivalent in 1/6 HP
- 4)FN57Q12G OR equivalent in 1/5 HP
- 5)FN66Q14G OR equivalent in 1/5 HP Powerful
- 6)FN77Q17G OR equivalent in 1/4 HP
- 7)FN91Q20G OR equivalent in 1/4 HP Powerful
- 8)FN110Q24G OR equivalent in 1/3 HP



PictureS Mbsm Dot Pro : [www.mbsm.pro](http://www.mbsm.pro)

Compressor tests - Calorimeter

Type		FN77Q17G 1)	QA77C17GAX5	QA91C22GAX5
Parameter				
Evaporation temp.	[°C]	LBP -23,3	LBP -25 2)    -23,3	LBP -25    -23,3
Refrigerant		R12	R134a	R134a
Q <sub>o</sub>				
CECOMAF	[W]		116,7	135
ASHRAE	[W]	191	154,2	187,1
ASHRAE	[kcal/h]	165	132,6	161
P <sub>1</sub>				
CECOMAF	[W]		144,1	166,4
ASHRAE	[W]	180	148,4	171,4
COP				
CECOMAF	[W/W]		0,81	0,81
ASHRAE	[W/W]	1,06	1,04	1,09
Start test				
cold tw = 32 °C		-	o.k	o.k
warm tw = 100 °C		-	o.k	o.k

1) Leaflet data, original compressor

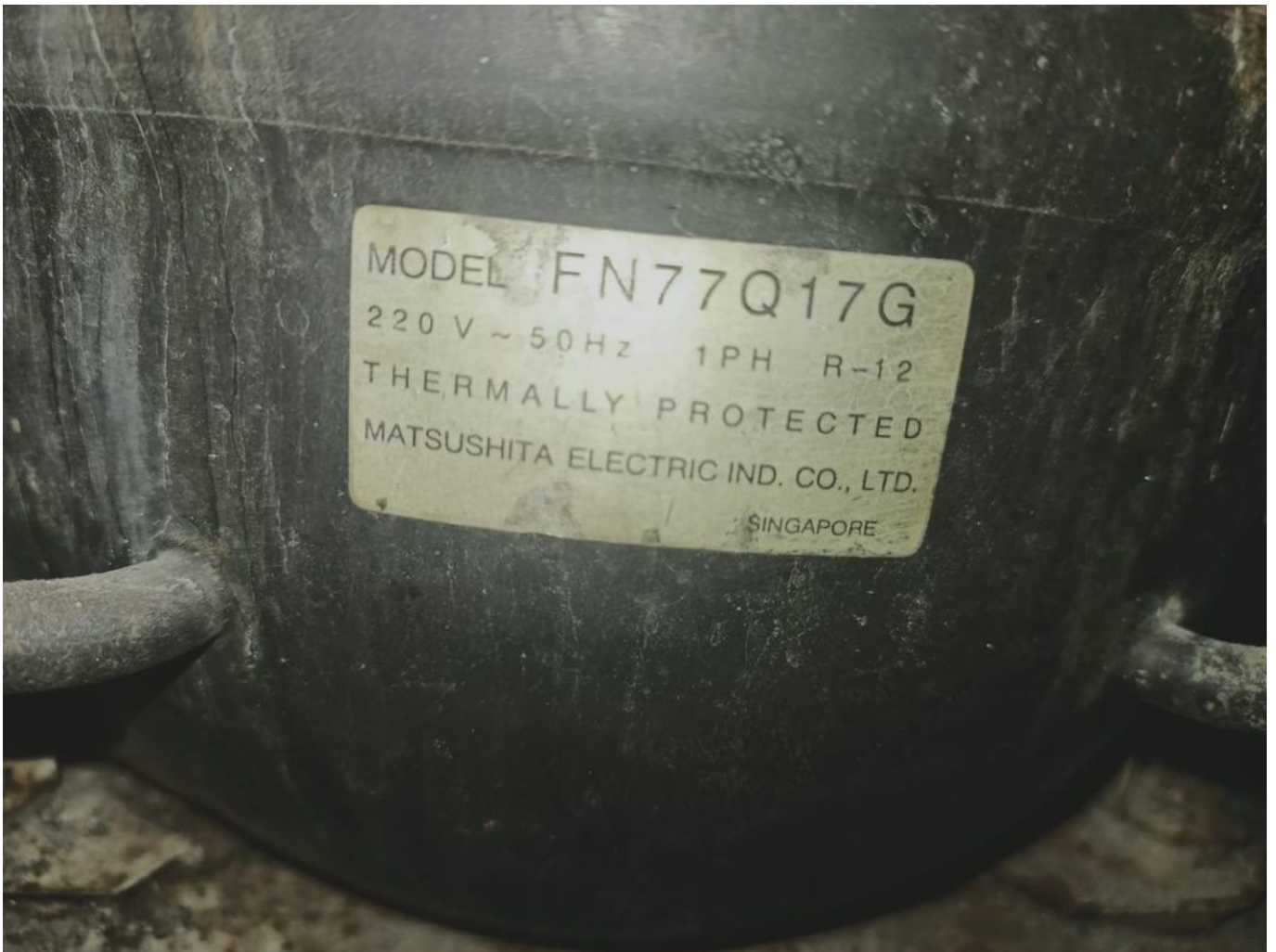
2) average two compressors, measuring



- 1) S060LKAA OR equivalent in 1/10 HP
- 2) FN43Q88G OR equivalent in 1/8 HP
- 3) FN51Q10G OR equivalent in 1/6 HP
- 4) FN57Q12G OR equivalent in 1/5 HP
- 5) FN66Q14G OR equivalent in 1/5 HP Powerful
- 6) FN77Q17G OR equivalent in 1/4 HP
- 7) FN91Q20G OR equivalent in 1/4 HP Powerful
- 8) FN110Q24G OR equivalent in 1/3 HP



MODEL FN77Q17G  
220V ~ 50Hz 1PH R-12  
THERMALLY PROTECTED  
MATSUSHITA ELECTRIC IND. CO., LTD.  
SINGAPORE



MODEL FN77Q17G  
220 V ~ 50Hz 1PH R-12  
THERMALLY PROTECTED  
MATSUSHITA ELECTRIC IND. CO., LTD.  
SINGAPORE

---

# Mbsm.pro , Jx58lhs5-k , DAEWOO COMPRESSOR , FOR REFRIGERATOR , 1/5 Hp , 220/240 V , R134A

Category: Solutions, Tester ok  
written by Jamila | 28 September 2018



PictureS Mbsm Dot Pro : [www.mbsm.pro](http://www.mbsm.pro)

Mbsm.pro , Jx58lhs5-k , DAEWOO COMPRESSOR , FOR REFRIGERATOR , 1/5 Hp , 220/240 V , R134A



< > 🔍 ✕ 3

jx58lhs5



∨ JX58LHS5-K

fx

O	N	M	L	K	A	
	290	R134a	LBP		HPL25YE-5-K	78
	290	R134a	LBP		HPL25YE-5-L	79
						80
						81
						82
					MODEL	83
	كمية الزيت	الفريون	التطبيق	W 7.2+		84
	290	R134a	LBP		HKL27YE-5	85
	290	R134a	LBP		HPL27YE-5	86
	290	R134a	LBP		HPL27YE-5-K	87
	290	R134a	LBP		HSL27YE-5A	88
	290	R134a	LBP		HKL30YE-5	89
	290	R134a	LBP		HPL30YE-5	90
	290	R134a	LBP		HPL30YE-5-K	91
	290	R134a	LBP		HSL30YE-5	92
	290	R134a	LBP		DH70LHP5	93
	290	R134a	LBP		DH80LHP5	94
	290	R134a	LBP		DH90LHK5	95
	290	R134a	LBP		DH99LHP5	96
	290	R134a	LBP		DH90LHP5	97
	290	R134a	LBP		DH120LHG5	98
	290	R134a	LBP		DH126LHG5	99
	290	R134a	LBP		DM99LHK5	100
	230	R134a	LBP		JX41LHP5-K	101
	230	R134a	LBP		JX41LHS5	102
	230	R134a	LBP		JX46LHS5	103
	230	R134a	LBP		JX51LHS5-K	104
	230	R134a	LBP		JX51LHS5	105
	230	R134a	LBP		JX51LHT5	106
	230	R134a	LBP		JX55LHP5-K	107
	230	R134a	LBP		JX55LHS5-K	108
	230	R134a	LBP		JX58LHK5	109
	230	R134a	LBP		JX58LHP5	110
	230	R134a	LBP		JX58LHP5-K	111
	230	R134a	LBP		JX58LHS5	112
	230	R134a	LBP		JX58LHS5-K	113
	230	R134a	LBP		JX58LHS5A	114
						115
						116



كويجيل

هواي

دايو





## Vue d'ensemble

### Description rapide

Point d'origine: Gwangju, South Korea    Marque nom: daewoo    Numéro de Type: Jx58lhs5-k  
Type: Compresseur frigorifique    Application: Pièces de réfrigération    Certification: CE  
alternatif: compresseur

### Capacité d'approvisionnement

Capacité d'approvis...30000 Piece/Pieces per Day

### Emballage et livraison

Détails d'emballage Palettisation  
Port Busan, Korea  
Délai : ⌚: 4weeks



PictureS Mbsm Dot Pro : [www.mbsm.pro](http://www.mbsm.pro)

## Specifications

DAEWOO COMPRESSOR FOR REFRIGERATOR

\* R134a/lbp  
-Origine: Corée

Nominale Tension [V-hz]	HP	Modèle	Moteur Type	Refroidissement Capacité [W]	Puissance Entrée [W]	COP [W/w]	Refroidissement Type
220/240-50	1/5	JX58LHS5-K	Rsir	163	145	1.12	ST
	1/4	HPL25YE-5-K	Rscr	203	171	1.19	ST
	1/3	HPL30YE-5-K	Rscr	257	207	1.24	ST



- \* Réduit la température du moteur
- \* Mise à jour pompe fiabilité
- \* Réduction de Bruit Niveau
- \* Amélioration de la capacité de protection

PictureS Mbsm Dot Pro : [www.mbsm.pro](http://www.mbsm.pro)

## Description rapide

Point d'origine:  
Gwangju, South Korea

Marque nom:  
daewoo

Numéro de Type:  
Jx58lhs5-k

Type:  
Compresseur frigorifique

Application:  
Pièces de réfrigération

Certification:

CE

alternatif:  
compresseur

Capacité d'approvisionnement

Capacité d'approvisionnement:  
30000 Piece/Pieces per Day

Emballage et livraison

Détails d'emballage  
Palettisation

Port  
Busan, Korea

Délai : :  
4weeks

## Specifications

DAEWOO COMPRESSOR FOR REFRIGERATOR

\* R134a/lbp

-Origine: Corée

Nominale Tension [V-hz]	HP	Modèle	Moteur Type	Refroidissement Capacité [W]	Puissance Entrée [W]	COP [W/w]	Refroidissement Type
220/240-50	1/5	JX58LHS5-K	Rsir	163	145	1.12	ST
	1/4	HPL25YE-5-K	Rscr	203	171	1.19	ST
	1/3	HPL30YE-5-K	Rscr	257	207	1.24	ST

- \* Réduit la température du moteur
- \* Mise à jour pompe fiabilité
- \* Réduction de Bruit Niveau
- \* Amélioration de la capacité de protection

---

Mbsm.pro, 1/5 HP ,170 w, SL23YE-5,  
DAEWOO, HERMETIC COMPRESSOR ,Turkey  
Refrigeration & Heat , R12

Category: Solutions,Tester ok  
written by Jamila | 28 September 2018



PictureS Mbsm Dot Pro : [www.mbsm.pro](http://www.mbsm.pro)

Mbsm.pro, 1/5 HP , 170 w, SL23YE-5, DAEWOO, HERMETIC COMPRESSOR , Turkey Refrigeration & Heat , R12



SL23YE-5  
AC 20 240V 50Hz  
LRA 7.74  
THERMALLY PROTECT  
DPEWOO ELECTRONIC Co., Ltd.  
MADE IN KOREA  
9909021362



PictureS Mbsm Dot Pro : [www.mbsm.pro](http://www.mbsm.pro)

Product Details

Company Profile

Inquiry Records(4)

Our Company is since 1969. All Refrigerant parts Trade. All refrigerants products import export. Air Condition Compressor, Other parts, Freezer Room parts, insulation, valve, all refrigerant, in Turkey. . .

#### Basic Information

Business Type: Trading Company, Distributor/Wholesaler  
Product/Service (We Sell): Refrigerant Parts, Air COnditioner, Copper, Heat Exhancer, Refrigerator, Condensing Unit, Condenser, Compressor  
Number of Employees: 11 - 50 People

#### Trade & Market

Main Markets: Eastern Europe, Southeast Asia, Africa, Mid East, Eastern Asia, Western Europe

#### Factory Information

Factory Location: Keresteci Recep Sk. No.10



PictureS Mbsm Dot Pro : [www.mbsm.pro](http://www.mbsm.pro)

Product Details

Company Profile

Inquiry Records(4)

**Item specifics**

Place of Origin: Seoul South Korea

JX51LHS5: 1/6 - ST

Port: ISTANBUL

HSL21YE-5-C: 1/5 - OC

HGH25YE-5: 1/4 - ST

HGH23YE-5: 1/5 - ST

HSL25YE-5-C: 1/4 - OC

Certification: CE

DM99HHG5: 3/8 - ST

Type: Refrigeration Compressor

Application: Refrigeration Parts



PictureS Mbsm Dot Pro : [www.mbsm.pro](http://www.mbsm.pro)

## Ohter 134A

FREON R134A GASES.

220V - 50~60HZ

LBP and HBP Application

MODEL	CC/REV	(W)	(Kcal)
JX51LHS5	5,1	129	111
HSL21YE-5-C	6,7	176	151
HSL25YE-5-C	7,7	198	170
HGH23YE-5	7,0	659	567
HGH25YE-5	7,7	803	691
DM99HHG5	9,9	1093	940



PictureS Mbsm Dot Pro : [www.mbsm.pro](http://www.mbsm.pro)

Mbsm.pro , Compresseur frigorifique,

# Embraco Aspera ,T2178GK , 1Hp ,PIÈCES FRIGO, 404A , 220-240 V 50 Hz

Category: Solutions,Tester ok  
written by Jamila | 28 September 2018



PictureS Mbsm Dot Pro : [www.mbsm.pro](http://www.mbsm.pro)

Mbsm.pro , Compresseur frigorifique, Embraco Aspera ,T2178GK , 1Hp ,PIÈCES FRIGO, 404A , 220-240 V 50 Hz



## Select text



## GAS R-404A / R-404A GAS



- Compresor hermético / Hermetic compressor  
 - Monofásico / Single-phase  
 - Voltaje / Voltage: 220V - 50 Hz

- Serie J, equipados con  
 with case and valve

## BAJA TEMPERATURA / LOW TEMPERATURE

Código Code	Modelos Models	HP HP	cm <sup>3</sup> cm <sup>3</sup>	Temperatura de evaporación	
				-25°C	W
14341	NE2125GK	1/3	8.78	300	
20792	NE2134GK	3/8	12.12	420	
20793	T2155GK	1/2	14.50	520	
20796	T2168GK	5/8	17.40	680	
21086	T2178GK	1	20.40	830	
21082	NJ2192GK	3/4	26.20	1020	
20850	NJ2212GK	1 1/4	34.37	1330	

## ALTA TEMPERATURA / HIGH TEMPERATURE

Código Code	Modelos Models	HP HP	cm <sup>3</sup> cm <sup>3</sup>	Temperatura de evaporación	
				-10°C	-5°C
				W	W
21069	NB6144GK	1/5	4.52	300	380
21070	NB6152GK	1/5	5.02	350	440
36596	NB6165GK	1/4	6.05	430	530
21075	NE9213GK	1/2	12.12	860	1080
20762	T6217GK	5/8	14.50	960	
36557	T6220GK	3/4	17.40	1160	
21076	NJ9226GK	1	21.70	1580	



Mbsm\_dot\_pro\_private\_PDF\_compresseur-embraco-aspera-t2478gkTélécharger



Private Picture Copyright : [WWW.MBSM.PRO](http://WWW.MBSM.PRO)

### Détails techniques

puissance 1 HP – cylindrée 20,40 cc

220/240V 50HZ

ASPERA

### FRIULINOX

Friulinox Armoire réfrigérée AF12 -20, AF12 PA, AF12-14, AF12-14 VTR, AF12-14 VTRP, AF14, AF14 -22 SILVER VTR, AF6-1, AF6-7, AF6-7 VTR, AF7, AF7 -20 VTR, AF7 -22 SILVER VTR, AF7 ICE, AF7 VTR, AF7-14, AG60 GOLD, AG60 H20, AG60 SILVER, AG60 SILVERP, AG60P, AL-EN SUPER, AL-EN1, AL-EN1 SUPER, AL-EN1P, AL-EN2, AL-EN2 SUPER, AL-ENP, AP12-14, AP14, AP6, AP6-12, AP6-7, AP7, AP7-14, AR12-14, AR12-14 VTR, AR14, AR6-12, AR6-12 VTR, AR6-7, AR6-7 VTR, AR7, AR7-14, AR7-14 VTR, AR-EN GOLD, AR-EN SILVER, AR-EN1, AR-EN1 GOLD, AR-EN1 VTR, AR-EN2, AR-ENP, ARF142, ARF212 VTR, ARP142, ARP-EN1, ARP-EN2, ARRF21 VTR, EN GOLD, EN P, EN SILVER, EN1,

EN1 GOLD, EN1 H2O, EN1 H2O SILVER, EN1 SILVER, EN1 VTR, EN2, EN2 H2O

**FriulinoxCellulede** refroidissement ARP122

**FriulinoxVitrineréfrigérée** AFP122, AFP142, ARF122

**ZANUSSI**

**ZanussiArmoireréfrigérée** ALF110 (110071), ALNF220 (110073), ALF110 (110074), ALF120 (110075), ALNF220 (110079), ADN111 (110757), AKP110 (111000), AKS110 (111001), AKP120 (111002), AKN110 (111009), AKN120 (111010), AKP110UK (111121), AKN110UK (111123), AKNF220 (111127), AKF110UK (111129), AKF110 (111137), AKF120 (111138), ASF110 (112030), ASF110 (112032), AZP2203 (113228), AZP220360 (113229), ALN2203 (113231), AZP13430 (113234), AZF2203 (113236), AZF13430 (113237), MRF601/86 (726059), ETZ601 (726165), ETZ602 (726166), ESQC41F (726171), ESQC41FR (726172), ESQF41F (726173), ETE601 (726178), ETE602 (726179), ETE601L (726184), ETZ601L (726185), RS13RX2F (726321), RS13FX2F (726323), RS13DX2F (726335), RS13PX2F (726459), RS13PX2F6 (726461), RS13P42F (726462), RS13FX42F (726464), RS13DFX2F (726465), RS13R32F (726467), SB1300X2F (726468), RS13PW2F (726475), RS13FW2F (726476), MRF601/86 (726500), RS13FX2F6 (726688), EKZ601 (726890), EKZ602 (726891), EKE601 (726939), EKE602 (726940), EKE601L (726949), EKZ601L (726950), RS13RX2FG (726967), RS13FX2FG (726968), RS13P42F (727128), RS13FX42F (727129), RS13RX4H (727157), RS13FX4H (727158), KLP1300R (728059), KLP1300F (728060), RS13PX2FD (728063), E06C0M1V (728077), E06C1M1V (728078), E06C0D1V (728081), C06FD1G (728173), FGD36 (728271), RH06RD1G (728408), C06FD1G (728415), RS05RD1G (728433), E05N0D1C (728457), E05C0D1C (728458), E06N0D1C (728465), E06N0D2C (728466), E06N0D1V (728467), E06C0D1C (728468), E06C0D2C (728469), E06C0D1V (728470), E06N0D1C (728522), E06C0D1C (728523), KLN1300R (728605), KLP1300R (728606), KEP1300R (728607), KLP1300R (728608), KLP1300F (728609), KEP1300F (728610), KLP1300F (728611), EMVN500 (730005), DVP500V11C (730677), DVP501V11C (730678), DVP600V11C (730683), DVP601V11C (730684), DVP602V11C (730685), DVP600V12C (730686), DVP601V12C (730687), DVP602V12C (730688), DVN600V11C (730701), DVN601V11C (730702), DVN602V11C (730703), DVN600V12C (730704), DVN601V12C (730705), DVN602V12C (730706), DVN500V11C (730721), DVN501V11C (730722), MVP600V11C (730725), MVP601V11C (730726), MVP602V11C (730727), MVP600V12C (730728), MVP601V12C (730729), MVN600V11C (730741), MVN601V11C (730742), MVN600V12C (730743), MVN601V12C (730744), DVP500V11C (730768), MVP501V11C (730769), MVP502V11C (730770), MVN500V11C (730780), MVN501V11C (730781), MLC601V11C (730938), MLC602V11C (730939), DVC500V11C (731242), DVC501V11C (731243), MVC502V11C (731244), DVC600 (731250), DVC601 (731251), MVC602 (731252), DVC600 (731255), DVC601 (731256), MVC600V11C (731282), MVC601V11C (731283), MVC600V12C (731284), MVC601V12C (731285), MVC500V11C (731294), MVC501V11C (731295), DVC602 (731302), DVC602 (731303), DVNN13022C (732073), DVNN13122C (732074), MVNN13022C (732079), MVNN13122C (732080), DVNC13022C (732095), EDVC13122C (732096), MVNC13022C (732103), MVNC13122C (732110), MLC600V11C (732251), MLC601V11C (732255), MLC602V11C (732257), DVP6VP12CC (734079), PDVN901V11C (737216), PDVN901V12C (737217), PDVN907V11C (737218), PDVN907V12C (737219), PDVC901V11C (737220), PDVN907V12C (737221), PDVC907V11C (737222), PDVC907V11C (737223), ILF120 (770508), RVPE061 (771100), RSPE061 (771101), RVPE062 (771102), RVNE061 (771108), RVNE062 (771109), KVPE662 (771115), RPPE061 (771155), ILF110 (771537), ZLNF220 (771539), RD13PX2F (790018), RD13FX2F (790019)

**ZanussiCellulede** refroidissement ESQC41F (691044), ESQC41FR (691045), ESQF41F (691046), ESQF41FR (691047), ESQF41FR (726144)

**ZanussiCongélateurcoffre** MRF4808660 (726042), MRF401/86 (726058), MRF240/86 (726060), MRF480/86 (726061)

**ZanussiTableréfrigérée** STRP1101 (113084), STRP1102 (113088), STRP1601 (113092), TRN224C (113102), TRN224D (113103), TRN224E (113104), STRP1602 (113105), STRP1603 (113106), STRP2201 (113107), STRP2202 (113108), STRP2203 (113109), STRP1101S (113128), STRP1601S (113129), STRP2201S (113130), STRP1602R (113131), TRN132A (113150), TRN132B (113151), TRN132C (113152), TRNA132A (113153), TRNA132B (113154), TRNA132C (113155), TRRN132A (113156), TRRN132B (113157), TRRN132C (113158), TRN183A (113159), TRN183B (113160), TRN183C (113161), TRN183D (113162), TRNA183A (113163), TRNA183B (113164), TRNA183C (113165), TRNA183D (113166), TRRN183A (113167), TRRN183B (113168), TRRN183C (113169), TRRN183D (113170), TRN224A (113171), TRN224B (113172), TRNA224A (113173), TRNA224B (113174), TRRN224A (113175), TRRN224B (113176), TRF132A (113177), TRFA132A (113178), TRRF132A (113179), TRF183A (113180), TRFA183A (113181), TRRF183A (113182), TRN132AE (113183), TRN183AE (113184), TRN224AE (113185), TRF132AE (113186), TRF183AE (113187), STRP1603R (113192), STRP2201R (113193), STRP2202R (113194), STRP2203R (113195), STRP1101R (113196), STRP1102R (113197), STRP1601R (113198), TCGS/1V7T (121856), TCGS/2V7T (121857), TCGS/1VC27 (121858), TCGS/2V2C7 (121859), TCGRS/1V7T (121866), TCGRS/2V7T (121867), TCGRS/1VC2 (121868), TCGRS/2V2 (121869), TCGS2VC27T (121905), RCSN2M2 (726139), RCSN2M12 (726140), RCSN3M3 (726141), RCSN3M22 (726145), RCSN3M14 (726146), RCSN4M4 (726147), RCSN4M32 (726148), RCSN4M24 (726170), RCSN2M2U (726182), RCSN3M3U (726188), RCSN4M4U (726197), RCDR4M24 (726199), RCDR4M16 (726200), RCDR4M08 (726201), RCSN2M2R (726202), RCSN2M12R (726203), RCSN3M3R (726210), RCSN3M22R (726211), RCSN3M14R (726212), RCSN4M4R (726213), RCSN4M32R (726220), RCSN4M24R (726221), RCDR2M20 (726408), RCDR2M12 (726409), RCDR2M20U (726410), RCDR2M12U (726411), RCDR2M04R (726412), RCDR3M22 (726413), RCDR3M0U (726414), RCDR3M22U (726415), RCDE4M40 (726416), RCDR4M32 (726417), RCDR4M40U (726418), RCDR4M32U (726419), RCDFM20UX (726421), RCDF3M30U (726422), RCER2M2 (726423), RCER3M3 (726424), RCER4M4 (726425), RCEF2M2X (726426), RCEF3M3 (726427), RCDR2M20 (726550), RCDR2M12 (726551), RCDR2M04 (726552), RCDR2M20U (726553), RCDR2M12U (726554), RCDR2M04U (726555), RCDR2M20R (726556), RCDR2M12R (726557), RCDR2M04R (726558), RCDR3M30 (726559), RCDR3M22 (726560), RCDR3M14 (726561), RCDR3M06 (726562), RCDR3M0U (726563), RCDR3M22U (726564), RCDR3M14U (726565), RCDR3M06U (726566), RCDR3M30R (726567), RCDR3M22R (726568), RCDR3M14R (726569), RCDR3M06R (726570), RCDR4M40 (726571), RCDR4M32 (726572), RCDR4M40U (726573), RCDR4M32U (726574), RCDR4M40R (726575), RCDR4M32R (726576), RCDF2M20 (726577), RCDFM20U (726578), RCDF2M20R (726579), RCDF3M30 (726580), RCDF3M30U (726581), RCDF3M30R (726582), RCSER2M2 (726583), RCSER3M3 (726584), RCSER4M4 (726585), RCEF2M2 (726586), RCEF3M3 (726587), RCSN2M2T (726668), RCSN3M3T (726669), RCSN4M4T (726670), RCSER2M2U (726682), RCSER3M3U (726683), RCER4M4U (726684), RCEF2M2U (726685), RCEF3M3U (726686), RCSF2M24 (727009), RCSF3M34 (727010), HB2PNTR (727108), HB3PNTR (727109), HB4PNTR (727110), HB2P (728086), HB1P2C12 (728139), HB1P3C (728157), HB4C (728158), HB3P (728207), HB2P2C (728235), EDON590124 (728238), EDON590116 (728239), EDON590108 (728240), HB1P4C (728241), HB6C (728242), HB4P (728243), HB3P2C (728244), HB2P4C (728245), HB8C (728246), HB2PR (728247), HB1P2CR (728248), HB1P3CR (728254), HB4CR (728259), HB3PR (728264), HB2P2CR (728294), HB1P4CR (728295), HB6CR (728296), HB4PR (728297), HB3P2CR (728298), HB2P4CR (728299), HB8CR (728300), HB1P2C (728302), RCHBF1P2C (728304), RCHBF2P2C (728305), S02P200I (728352), S02P120I (728353), S04P300I (728354),

S04P220I (728361), S04P140I (728362), S05P400I (728363), S05P320I (728364),  
E29N200I (728368), E29N120I (728369), E29N040I (728370), E29N200IA (728371),  
E29N120IA (728372), E29N040IA (728373), E29N200R (728374), E29N120R (728375),  
E29N040R (728376), E44N300I (728377), E44N220I (728378), E44N140I (728379),  
E44N060I (728380), E44N300IA (728381), E44N220IA (728382), E44N140IA (728383),  
E44N060IA (728384), E44N300R (728385), E44N220R (728386), E44N140R (728387),  
E44N060R (728388), E59N400I (728389), E59N320I (728390), E59N400IA (728391),  
E59N320IA (728392), E59N400R (728393), E59N310R (728394), E29C200I (728395),  
E29C200IA (728396), E29C200R (728397), E44C300I (728398), E44C300IA (728399),  
E44C300R (728400), S05P240I (728401), ED0N2912SE (728492), ED0N4413SE (728493),  
ED0N5914SE (728494), EDOC2912SE (728495), EDOC4413SE (728496), HB2PU (728509),  
HB3PU (728510), HB4PU (728511), RCSF2M2 (728512), RCSF3M3 (728517), RCSF2M12  
(728518), RCSF3M22 (728519), S04P220R (728536), S04P140R (728537), S05P400R  
(728538), S05P320R (728539), S05P240R (728540), HB1P2CRN (728552), HB1P3CRN  
(728554), HB4CRN (728556), HB2P2CRN (728558), HB1P4CRN (728560), HB6CRN  
(728562), HB3P2CRN (728564), HB2P4CRN (728566), HB8CRN (728568), HBF2PN  
(728569), HBF1P2CN (728570), HBF3PN (728571), RCHBF2P2CN (728573), S02P200IA  
(728585), S04P300IA (728586), S05P400IA (728587), S02P200R (728588), S02P120R  
(728589), S04P300R (728590), RCHBF2P (728635), RCHBF3P (728636)

...et d'autres dispositifs

– ALPENINOX

T2178GK – ASPERA

01AS0970 – ATEL – ELECTROLUX PROFESSIONAL

T2178GK – EMBRACO – FRIULINOX – INDESIT – UNIVERBAR – WHIRLPOOL – ZANUSSI

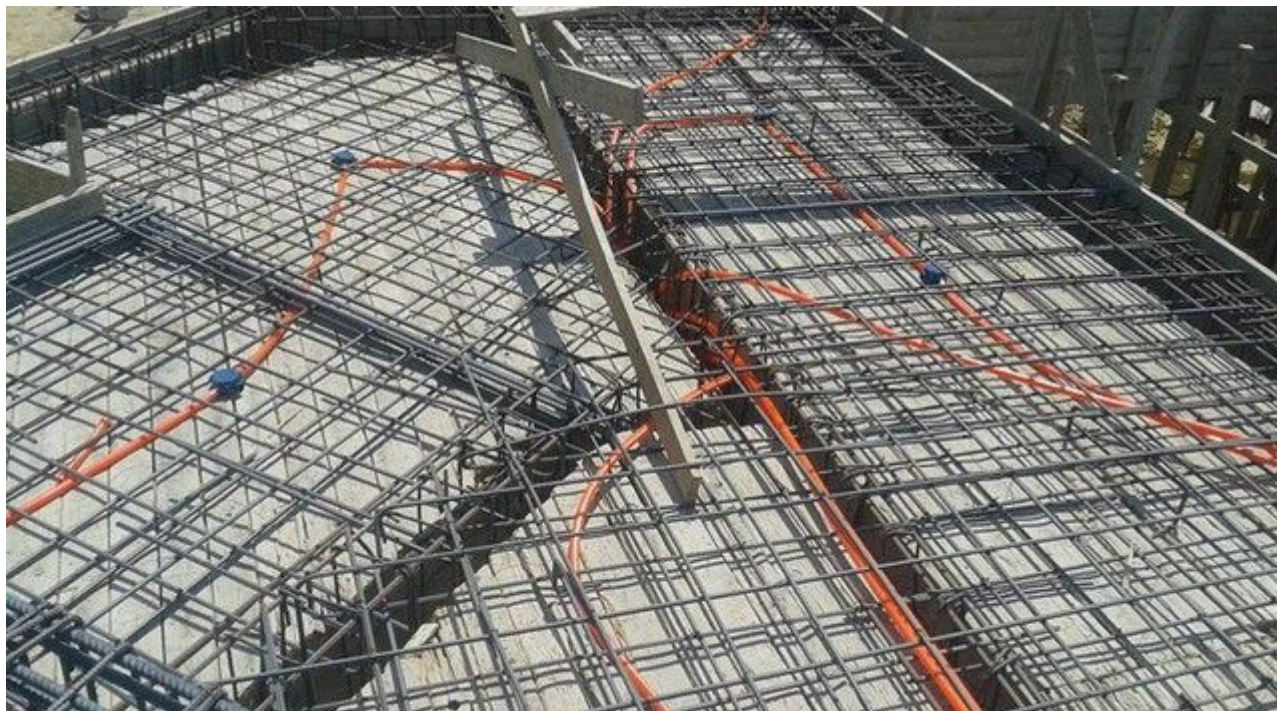
...numéros de fabricant supplémentaires possibles

---

## Mbsm.pro, The risk of extending the electric hoses under the reinforcing steel for ceilings

Category: Pictures

written by Jamila | 28 September 2018



PictureS Mbsm Dot Pro : [www.mbsm.pro](http://www.mbsm.pro)

Mbsm.pro, The risk of extending the electric hoses under the reinforcing steel for ceilings

---

**Mbsm.pro, COMPRESOR DANFOSS ,FR7.5B  
,1/5 Hp , R-12 ,freezer ,capillary  
260 cm , 0.31**

Category: Solutions, Tester ok  
written by Jamila | 28 September 2018



PictureS Mbsm Dot Pro : [www.mbsm.pro](http://www.mbsm.pro)

Mbsm.pro, COMPRESOR DANFOSS ,FR7.5B ,1/5 Hp , R-12 ,freezer ,capillary 260 cm ,  
0.31

---

# نصائح لمتعلمي السياقة حول التوقف والوقوف وأضواء السيارة

Category: News

written by Jamila | 28 September 2018



PictureS Mbsm Dot Pro : [www.mbsm.pro](http://www.mbsm.pro)

نصائح لمتعلمي السياقة حول التوقف والوقوف وأضواء السيارة

## mbsm.pro, COMPRESSEUR, GUY75AA ,R134 ,1/5 HP

Category: Technologie, Tester ok

written by Jamila | 28 September 2018



PictureS Mbsm Dot Pro : [www.mbsm.pro](http://www.mbsm.pro)

Compressors of the hermetic type from the manufacturer ACC Cubigel Huayi Electrolux ZEM can be found in our online shop category compressors.

---

# Mbsm.pro, Réfrigérateur, remplacement d'un moteur, R600a ,par un ,moteur R134a

Category: Solutions,Tester ok  
written by Jamila | 28 September 2018

Bonsoir, MBSM.PRO|

le remplacement d'un compresseur R600A par un compresseur R134A est possible a condition:

- de rincer le circuit frigorifique a l'azote ou R22 et pas avec l'air comprimer car il contient de humidité .
- remplacer bien evidement le deshydrateur (filtre)
- de charger correctement (ni plus, ni moins).

il est conseiller et préférable de remplacer le compresseur par un équivalent (faute de trouver le même), fonctionnant au même gaz!

il faudrait mettre le double de r134a par rapport au r600a ,85/90 grammes,contrôler la pression (0.2 bars de r134a en fonctionnement stabilisé),mais ce n'est pas certain que cela fonctionne bien car le capillaire (longueur et diamètre intérieur) est différent suivant les fluides utilisés car la perte de charge n'est pas la même.

Il Faut changer le capillaire

La Température avec le capillaire de r600a ne dépassera 16 degré Celsius

PictureS Mbsm Dot Pro : [www.mbsm.pro](http://www.mbsm.pro)

Bonsoir, MBSM.PRO

le remplacement d'un compresseur R600A par un compresseur R134A est possible a condition:

---

# Mbsm.pro , BILLES EN ALUMINE D'HAUTE DENSITÉ HITO 92HD ,Filtre déshydrateur

Category: Solutions,Tester ok  
written by Jamila | 28 September 2018



PictureS Mbsm Dot Pro : [www.mbsm.pro](http://www.mbsm.pro)

Les billes d'alumine fabriquées par Hito Technical Industries, 92HD, sont des billes avec un contenu minimum d'alumine de 92% ; ainsi, elles deviennent les billes avec la densité la plus haute du marché. Les billes HITO 92HD se caractérisent pour leur haute résistance à l'usure dû à la stricte sélection des dopants de sintérisé de l'alumine, lesquels nous permettent réguler parfaitement la température de cuisson et, par la suite, réguler la structure cristalline que s'en forme. Cette faible tasse d'usure,