

Mbsm.pro, Copeland, Reciprocating, Hermetic, Compressors, CRNQ-0500-TFD, 5 hp, R22, HCFC, R-22, 50 Hz, 3 – Phase, 380/420 V , CR QR Series

Category: compressor

written by www.mbsm.pro | 27 August 2022



Private Picture Copyright : WWW.MBSM.PRO

Mbsm.pro, Copeland, Reciprocating, Hermetic, Compressors, CRNQ-0500-TFD, 5 hp, R22, HCFC, R-22, 50 Hz, 3 – Phase, 380/420 V , CR QR Series

Mbsm.pro, Copeland, Scroll
Compressor, ZR series, ZR72KCE-
TFD-522, 6 hp, r22, R-407, v380-420V
/ 50Hz / 3ph

Category: air conditioner,Archivation,compressor
written by www.mbsm.pro | 27 August 2022



Private Picture Copyright : WWW.MBSM.PRO

Mbsm.pro, Copeland, Scroll Compressor, ZR series, ZR72KCE-TFD-522, 6 hp, r22,

R-407, v380-420V / 50Hz / 3ph

Mbsm.pro, Compressor, Copeland,
Scroll, ZP90KCE-TFD-425, R410A,
380V*3, 50Hz, 7.5 Hp++, 74.500 Btu/h,
HBP

Category: compressor

written by www.mbsm.pro | 27 August 2022



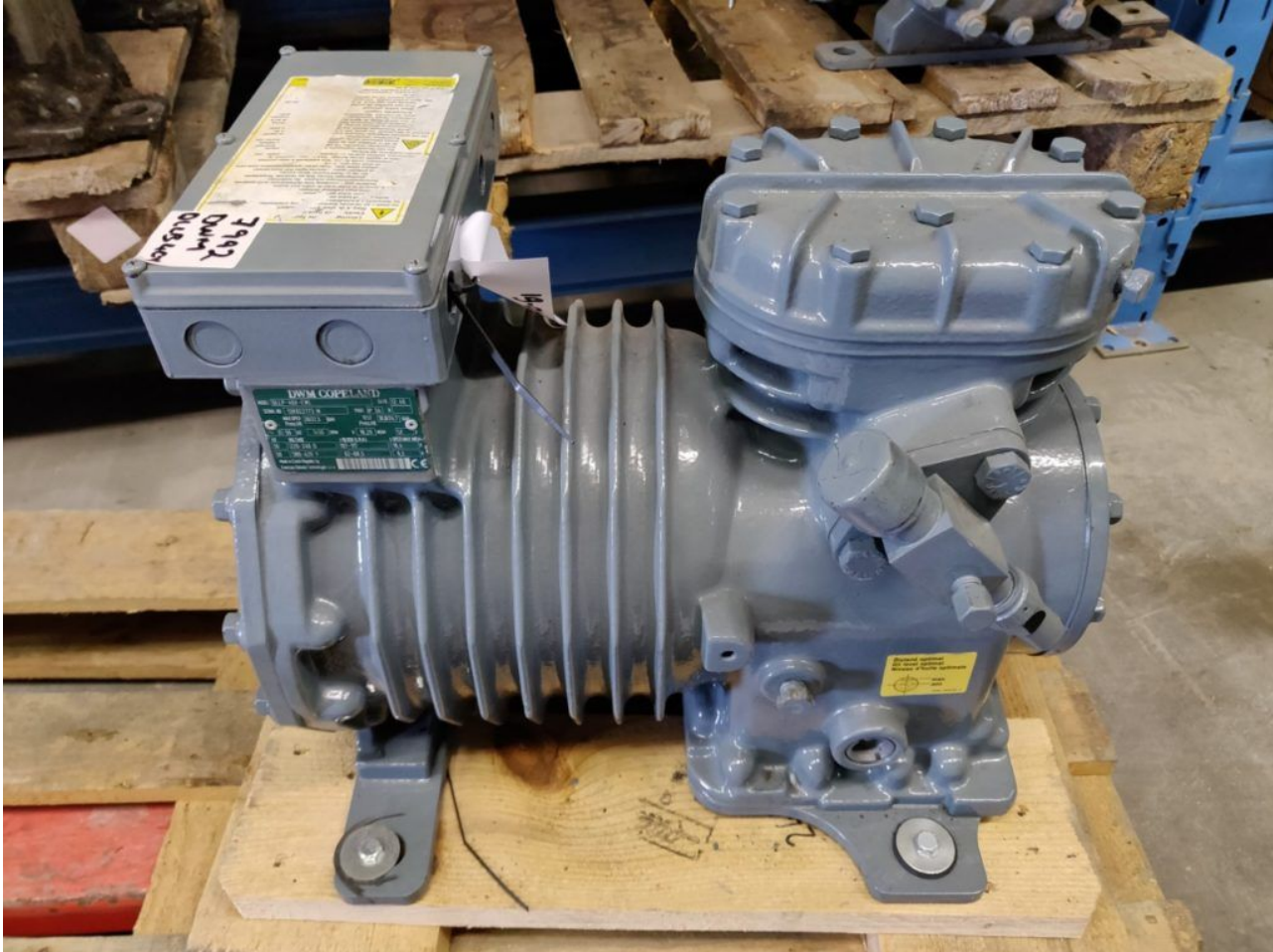
Private Picture Copyright: WWW.MBSM.PRO

Mbsm.pro, Compressor, Copeland, Scroll, ZP90KCE-TFD-425, R410A, 380V*3, 50Hz, 7.5 Hp++, 74.500 Btu/h, HBP

Mbsm.pro, Compressor, DLLP-40X, DLLP-40X-EWL, DWM, Copeland, Semi-Hermetic Compressor, 4 Hp, R507, 400V /3PH/ 50hz

Category: compressor

written by www.mbsm.pro | 27 August 2022



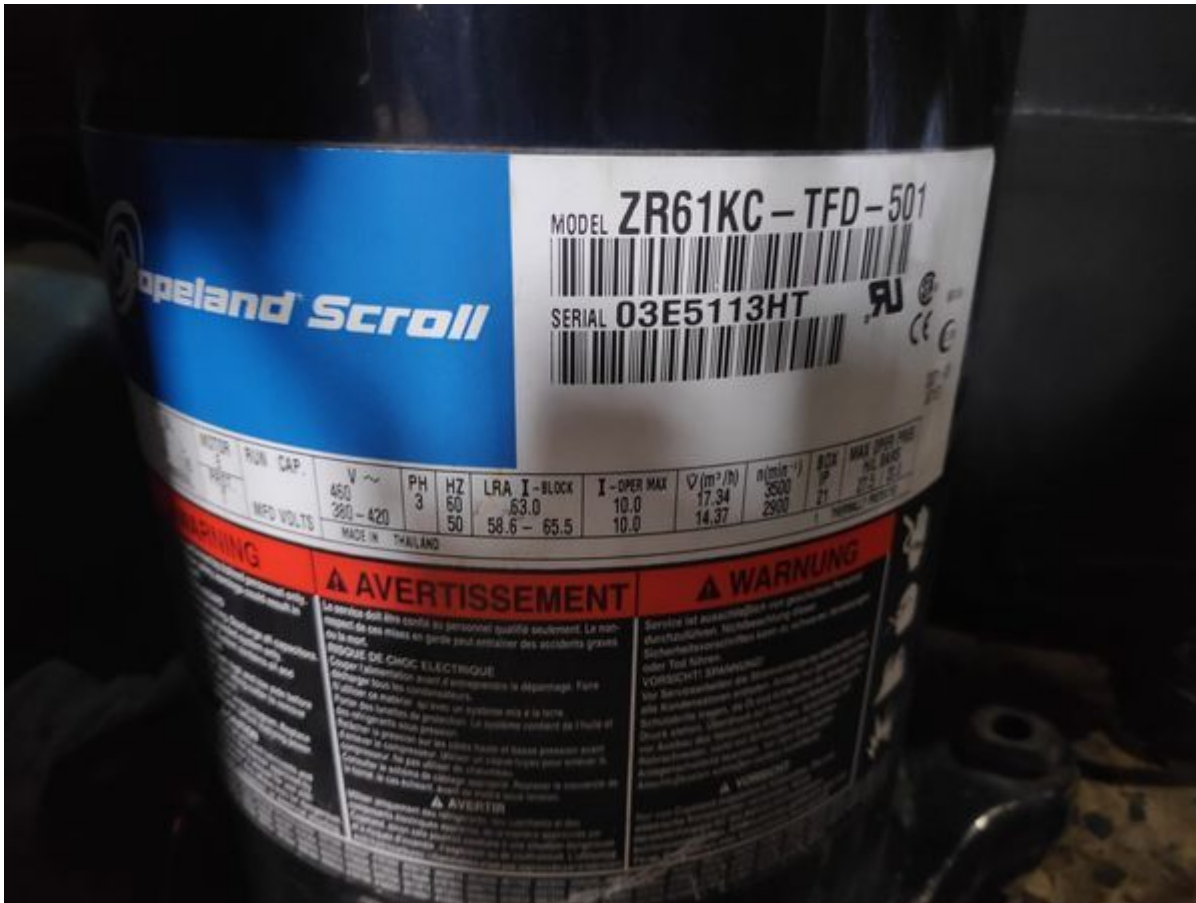
Private Picture Copyright: WWW.MBSM.PRO

Mbsm.pro, Compressor, DLLP-40X, DLLP-40X-EWL, DWM, Copeland, Semi-Hermetic Compressor, 4 Hp, R507, 400V /3PH/ 50hz

Mbsm.pro, COMPRESSOR, ZR61KC-TFD-522, SCROLL, R22, 3 PHASE, COPELAND, chiller, 14570 w, 49700 btu, 5 Hp

Category: compressor

written by www.mbsm.pro | 27 August 2022



Private Picture Copyright: WWW.MBSM.PRO

Mbsm.pro, COMPRESSOR, ZR61KC-TFD-522, SCROLL, R22, 3 PHASE, COPELAND, chiller, 14570 w, 49700 btu, 5 Hp

Mbsm.pro, compressor, Copeland, ZP137KCE-TFD-522, 11.4 HP, 3 ph, 380 v, 32500 W, 111000 Btu/h, SCROLL, R410A

Category: compressor

written by www.mbsm.pro | 27 August 2022



Private Picture Copyright: WWW.MBSM.PRO

Mbsm.pro, compressor, Copeland, ZP137KCE-TFD-522, 11.4 HP, 3 ph, 380 v, 32500 W, 111000 Btu/h, SCROLL, R410A

Mbsm.pro, Compressor, Copeland, 1 1/4 Ton, 2 hp, Scroll, ZR16KC-PFV-230, ZR16KA-PFV-830, ZR16K4-PFV-130, 15500 btu, R-22, 230 v, 1 ph

Category: compressor
 written by www.mbsm.pro | 27 August 2022



Private Picture Copyright: WWW.MBSM.PRO

Mbsm.pro, Compressor, Copeland, 1 1/4 Ton, 2 hp, Scroll, ZR16KC-PFV-230, ZR16KA-PFV-830, ZR16K4-PFV-130, 15500 btu, R-22, 230 v, 1 ph

Mbsm.pro, Compressor, Copeland, ZR90K3-TWD-551, ZR90K3TWD551, 7.5 Hp, R22, 380-420/3/50Hz

Category: compressor

written by www.mbsm.pro | 27 August 2022



Private Picture Copyright : WWW.MBSM.PRO

Mbsm.pro, Compressor, Copeland, ZR90K3-TWD-551, ZR90K3TWD551, 7.5 Hp, R22, 380-420/3/50Hz

Mbsm.pro, Compressor, CRJQ-0300-PFV-593, CRJQ 0300, Copeland, 3-1/4 HP, 208-230V, 1 PH, R22, R407C, Hermetic Compressor, 3300BTU, 9170W

Category: compressor

written by www.mbsm.pro | 27 August 2022

Copeland  MODEL MADE IN U.S.A. MARCA REGISTRADA

CRJQ-0300-PFV-593



SERIAL **96D45450H** 07535-030

 **F3D**

THERMALLY PROTECTED

OIL	MO	PRO	VOLTS		PH	HZ	LRA
55	E	U	208	230	1	60	93.0
MIN			200			50	

Mbsm.pro, Compressor, CRJQ-0300-PFV-593, CRJQ 0300, Copeland, 3-1/4 HP, 208-230V, 1 PH, R22, R407C, Hermetic Compressor, 3300BTU, 9170W

Cold room, Copeland, ZR scroll, compressor, ZR144KCE-TFD-550, 12HP Copeland Scroll Compressor, Hermetic Compressor Specifications

Category: compressor

written by www.mbsm.pro | 27 August 2022

Model	Horse Power (HP)	Cooling capacity(w)	InputPower(kw)	Current (A)	Bottom corner size(mm)	Weight(KG)
ZR144KC-TFD-550	12	34730	10.87	19.6	190	63



Private Picture Copyright : WWW.MBSM.PRO

Type: Hermetic scroll compressors **Producer:** Copeland **Series:** ZR

Model: ZR144KCE-TFD

Technical data

Displacement [m³/h]: 33,2
Sound power [dBA]: 75
Sound pressure level [dB]: 64
Net Weight [kg]: 61,2
Gross Weight [kg]: 72
Oil charge [dm³]: 3,3
Maximum high pressure [bar]: 32
Maximum standstill pressure [bar]: 20
Minimal lowside temperature [°C]: -35
Maximum lowside temperature [°C]: 52
PED category: 2

Electrical data

Power supply [V/~/Hz]: 380-420/3/50Hz
Locked rotor current [A]: 118
Max. operating current [A]: 22,3
Winding resistance [Ω]: 1,2

Connections

inches

Suction connection with supplied sleeve: 1 3/8"
 Discharge connection with supplied sleeve: 7/8"
 Compressor Copeland Scroll ZR144KCE-TFD-425, R407C, 380-420V
 Type of engine: TFD
 Displacement: 33.2 m3 / h (191,23 cm3)
 Cooling capacity (0 ° C): 20.00 kW.
 Oil quantity: 3.38 L.
 Noise level: 61 dBA – 1 m.
 Max. Noise level: 75 dBA.
 Max. Operating current (FLA): 22.3 A.
 LRA: 118.0 A.
 Connectors: 1.3 / 8 "x 7/8".
 Dimensions (LxWxH): 264x285x533 mm
 Net Weight: 61.2 kg

Shipping Class	Standard
Scope Of Application	HBP
Lieferzeit	Ca. 10-14 Tage
Type Of Construction	Scroll
Maker	Copeland
Manufacturer No.	ZR144KCE-TFD-425
Style	1
Refrigerants	R407C
Series	ZR
Condensing Units Compressors	Compressors
Suspense	380-420V
Weight In Kg	61

Model	Horse Power (HP)	Cooling capacity(w)	InputPower(kw)	Current (A)	Bottom corner size(mm)	Weight(KG)
ZR144KC-TFD-550	12	34730	10.87	19.6	190	63



MODEL ZR144KCE - TFD - 550



SERIAL 13G6771ET



SA2337



I-OPER MAX		PED CAT2 / FG2 HIGH SIDE PS = 32.0 BAR	
22.3	22.3	∇ (m ³ /h)	BOX
22.3	22.3	40.05	IP
		33.18	21
		n (min ⁻¹)	PED LOW SIDE
		3500	TS MIN = -35 °C
		2900	TS MAX = 50 °C
			PS = 20.0 BAR
		93384-016 UA7635 2	THERMALLY PROTECTED

WARRANTY

ADVERTENCIA

Únicamente personal capacitado deberá efectuar el servicio del equipo. El no seguir estas advertencias de seguridad podrá ser causa de lesiones graves o la muerte.

PELIGRO DE DESCARGA ELECTRICA

Desconecte la corriente eléctrica antes de dar servicio. Descargue todos los capacitores. Este equipo debe usarse únicamente en un sistema conectado a tierra. Una falta de conexión a tierra puede causar lesiones graves o la muerte.



PETRA

PETRA ENGINEERING INDUSTRIES CO.
P.O. BOX 141351 Amman 11814 JORDAN



MODEL

REF. No.

SERIAL NO.

NOMINAL POWER SUPPLY VOLT/Hz /Ph

COMP. MOTOR	QTY	VOLT	LRA	RLA	Max. Amp.	hp
A	<input type="text" value="1"/>	<input type="text" value="380"/>	<input type="text" value="110"/>	<input type="text" value="19 6"/>	<input type="text" value="22 3"/>	<input type="text" value="12"/>
B	<input type="text"/>	<input type="text"/>	<input type="text"/>	<input type="text"/>	<input type="text"/>	<input type="text"/>

	QTY	VOLT	Ph	kW	FLA
COND. FAN MOTOR A	<input type="text" value="2"/>	<input type="text" value="380"/>	<input type="text" value="3"/>	<input type="text" value="0 43"/>	<input type="text" value="1 1"/>
COND. FAN MOTOR B	<input type="text"/>	<input type="text"/>	<input type="text"/>	<input type="text"/>	<input type="text"/>
EVAP. FAN MOTOR	<input type="text" value="1"/>	<input type="text" value="380"/>	<input type="text" value="3"/>	<input type="text" value="4"/>	<input type="text" value="8 4"/>
ELECTRIC HEATER	<input type="text" value="3"/>	<input type="text" value="220"/>	<input type="text" value="1"/>	<input type="text" value="3"/>	<input type="text" value="13 6"/>

COIL TEST PRESSURE Psig REFRIGERANT

MINIMUM WATER LOOP VOLUME (GAL)

CHILLER MINIMUM WATER FLOW RATE (GPM)

Made in Jordan



Manufacturing Year