

Comptek QD65H Compressor 1/6 HP R134a L/MBP Technical Specifications and Replacement Guide

Category: Refrigeration

written by www.mbsm.pro | 31 January 2026



Private Picture Copyright : WWW.MBSM.PRO

The Comptek QD65H is a high-performance 1/6 HP reciprocating compressor designed for R134a systems. Ideal for refrigerators between 180 and 250 liters, it offers a cooling capacity of 160W at -23.3°C. This professional guide covers its electrical characteristics, COP efficiency metrics, and provides a comprehensive list of equivalent models for seamless field replacement.

Mbsm.pro, Comptek, hermetic, compressor , MALQD65UHM, r290, 1bp, 1/4 hp

Category: compressor

written by www.mbsm.pro | 31 January 2026



Private Picture Copyright : WWW.MBSM.PRO

Start	RSIR
Cooling	S.
Refrigerant	R290
Performance	175W (-35 ° C), 205W (-30 ° C), 265W (-25 ° C), 295W (-23.3 ° C), 335W (-20 ° C), 395W (-15 ° C), 455W (-10 ° C), 510W (-6.7 ° C), 560W (-5 ° C), 635W (0 ° C)
Oil filling	220g
Power HP	1/4
Input power	196W (- 23.3 ° C), 255W (- 6.7 ° C)
The step size	6.5 cm ³

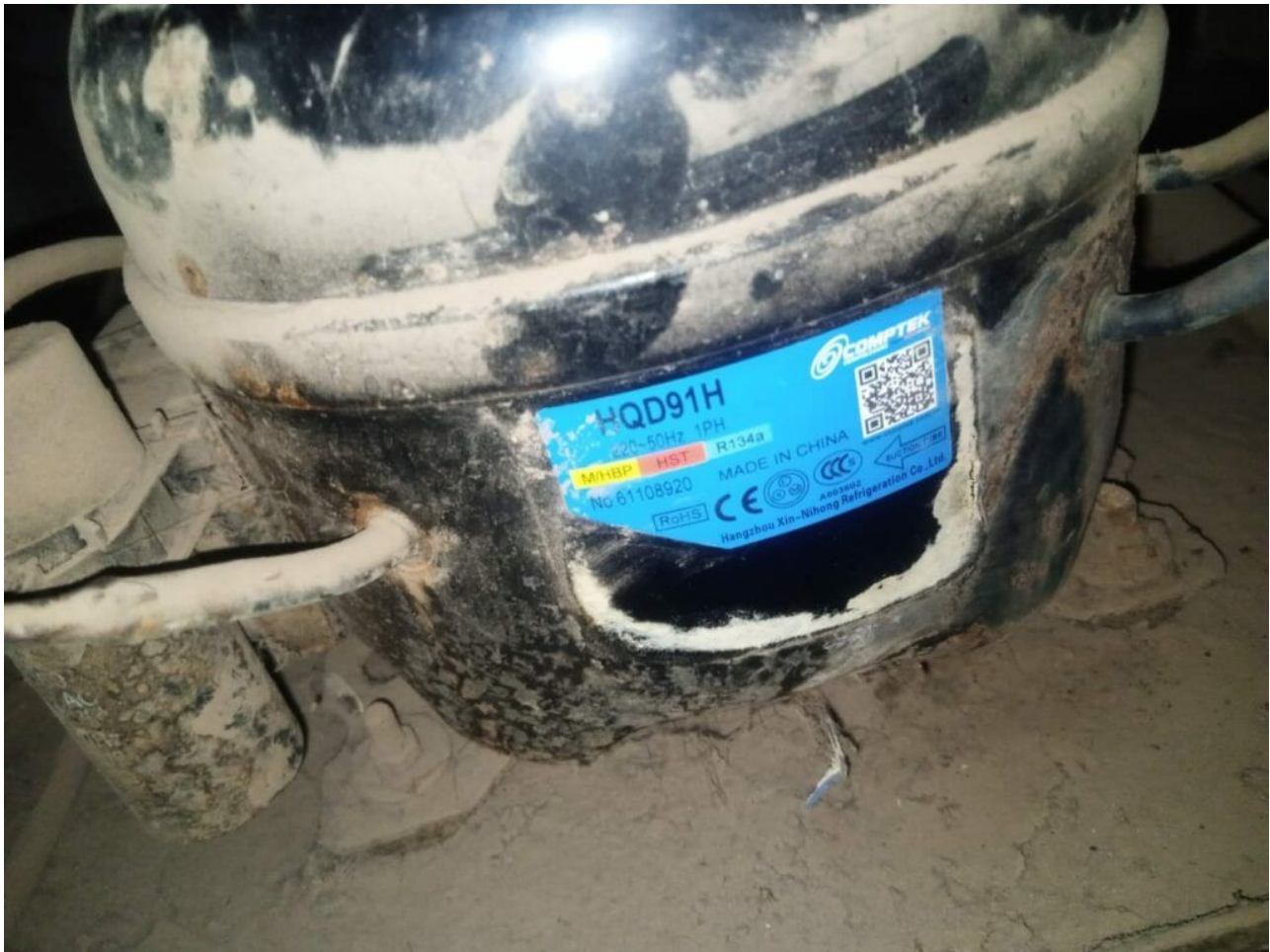


Private Picture Copyright : WWW.MBSM.PRO

COMPTEK, Compressor, HALQD91HHR,
HQD91H, 1/4 hp++, 1/3 hp-, m/hbp, 250
w, 8.8 cm³, r134a

Category: expertise

written by Amina | 31 January 2026



Private Picture Copyright : WWW.MBSM.PRO

COMPTEK, Compressor, HALQD91HHR, HQD91H, 1/4 hp++, m/hbp, 250 w, 8.8 cm³

Mbsm.pro, COMPTEK, COMPRESSOR, TECHNOLOGY

Category: compressor

written by www.mbsm.pro | 31 January 2026



Private Picture Copyright : WWW.MBSM.PRO

Mbsm.pro, COMPTEK, COMPRESSOR, TECHNOLOGY