

Mbsmpro.com, ZB38, 5HP, R404, MBP

Category: Refrigeration

written by www.mbsm.pro | 27 November 2025



picture copyright www.mbsmpro.com

picture copyright www.mbsmpro.com

Private Picture Copyright : WWW.MBSM.PRO

ZB38 5HP R404A MBP scroll compressor has become a reference point in medium-temperature commercial refrigeration, providing a compact, efficient and reliable heart for cold rooms, display cabinets and food service equipment worldwide. This article explores how it works, where it fits best and what technicians should verify before installing or replacing this type of compressor.

Mbsm.pro, Comprehensive Guide to Danfoss Compressors: Specifications, Applications, and Selection Tips

Category: compressor

written by www.mbsm.pro | 27 November 2025

DENFOSS COMPRESSOR

Capillary Length	Capillary NO	Oil	Hp (Horsepower)	Compressor No
4 Feet	0.26	150 ml	1/14	TL2A
4 Feet	0.26	150 ml	1/12	TL2.5A
4 Feet	0.26	150 ml	1/12	TL2.5B
4 Feet	0.26	150 ml	1/14	PW3K6
4 Feet	0.26	150 ml	1/12	PW3K7
6 Feet	0.26	175 ml	1/10	PW3.5K7
6 Feet	0.26	175 ml	1/10	TL3B
7.5 Feet	0.28	200 ml	1/8	TL4B
7.5 Feet	0.28	200 ml	1/8	TL4A
7.5 Feet	0.28	200 ml	1/8	PW4.5K9
7.5 Feet	0.28	200 ml	1/8	PW4.5K7
7.5 Feet	0.28	200 ml	1/8	PW4.5K11
7.5 Feet	0.28	200 ml	1/8	TFS4AT
9 Feet	0.31	250 ml	1/6	TL5A
9 Feet	0.31	250 ml	1/6	PW5.5K11
9 Feet	0.31	250 ml	1/6	PW5.5K9
9 Feet	0.31	250 ml	1/6	TFS5AT
9 Feet	0.31	250 ml	1/6	FR6B
10 Feet	0.31	275 ml	1/5	FR7.5A
10 Feet	0.31	275 ml	1/5	FR7.5B
10 Feet	0.31	300 ml	1/4	FR8.5A

Private Picture Copyright : WWW.MBSM.PRO

Discover the essential specifications and applications of Danfoss compressors in this comprehensive guide. Learn about capillary length, oil quantity, horsepower, and how to choose the right compressor for your refrigeration or air conditioning needs. Perfect for HVAC professionals and enthusiasts alike

Bitzer, Compressor, S6F-30.2Y-40P, Compressor Selection, Semi-hermetic

Reciprocating, 1450 min⁻¹ , 101,1 (LP) , 30hp

Category: compressor

written by www.mbsm.pro | 27 November 2025



Type S6F-30.2Y-40P

S.No. 1600308267

BITZER KÜHLMASCHINENBAU GMBH
Made in Germany



Nominal Voltage V 3Ph~	Frequ. Hz	Operat. C. A (max.)	Locked Rotor C.		Displacem. m³/h	Speed RPM
			A (Y)	A (YY)		
380-420	50	51	135	220	101,4	1450
440-480	60	51	135	220	122	1750

IP 54 LP/HP max. 19 / 28 bar



BITZER is raising the bar in terms of technology and capacity for expanded low temperature applications with the 2nd generation of 2-stage compressors. This series is the result of extensive research on the basis of years of experience in the construction of highly efficient and solid reciprocating compressors. The gas flow control and working valves are specially adapted for low temperature applications.

- Displacement at 1450 min⁻¹ : 101,1 (LP) 50,5 (HP)
- Number of cylinders : 6
- Oilcharge : 4,75 dm³

Displacement (1450 RPM 50Hz):101.10 / 50.50 m³/h Displacement (1750 RPM 60Hz):122.02 / 60.95 m³/h

The Bitzer Compressor is high quality!

Displacement (1450 RPM 50Hz):101.10 / 50.50 m³/h

Displacement (1750 RPM 60Hz):122.02 / 60.95 m³/h

No. of cylinder x bore LP/HP x stroke:6+6 x 82/ 82 mm x 55 mm

Max. pressure (LP/MP/HP):19 / 19 / 28 bar

Connection suction line:42 mm – 1 5/8 inch

Connection discharge line:35 mm – 1 3/8 inch

Oil type R404A/R507A:BSE32 (Standard)

Oil type R448A/R449A:BSE32 (Standard)

Oil type R22:B5.2 (Option) We can also provide the following models

4JTE-15K

GYD80485VAYB4

GED60235VLB332

GMD60137VBYR632

GED60485VBYR3-1

CSH7573-70Y-40P

GYD80182VLYB632

GYD60385VLYR2-2

GED80154VLR332

GYU80295VLR4-2

GSU60120VLB6-2

GED60137VAYB3-1

GUU60154VLR532

GUD80295VLR232

GSD80295VLR6-1

GTU60137VLYB3-1

GUD60137VBYR5-1

GYD80235VBYB332

GYD60421VAYR332

GMD60295VBR3-1

GED80154VBYB6

4NEH-14-40S

GMU60154VLY

GYD60154VAB4-2

GYD80182VAYR4-2

GYD80421VBR5-1

GYD60385VLYR4-1

4TE-9.F3Y-40S

GMD60182VBYB3-2

GMD80120VLR232
 GUD60120VBYR5-2
 GSD60154VAYR232
 GMD60154VBYR632
 44EES-12-40S
 GMD60154VBB432
 GUD80421VWR4-2
 GYD80385VAYR2-2
 GTD60385VLB632
 GED60235VLB2
 GED60154VAYR4
 GSD80421VWR5-2
 GUD60421VBR5
 GYD80182VBYB5-1
 GED60295VBB5
 GED80421VAR4-1
 GED60385VLYB3
 GYU80421VLR2
 GSD80485VBB5-1
 GED60120VLB2
 GUD60421VBR332
 GTD60154VAB4-2
 GED60421VAYB6-1
 GMD60485VBB5-1
 GSD60485VAYR4
 GED80295VLYR6-1
 GSD60235VAYB232
 GTD60385VBYR3-1
 GUD60154VBB3-2
 GUD80295VWB6-2
 GED60421VAR5
 GMD80421VBR4
 GED80182VLR532
 GSD60154VBYB6-1
 GTD80421VBYR332
 GSD60182VAYB4-1
 GUD80485VWYR5-2
 GSU80295VLYR6-1
 GSD80182VLYR2-2
 GSU80385VLB432
 GED80295VAY
 GED80295VAB3-2
 GYD60120VAR4

With liquid subcooling 50Hz (R404A/R507A)

Compressor type	Cond. temp. [°C]	Q _o / P _e	Evaporating temperature °C									
			-25	-30	-35	-40	-45	-50	-55	-60	-65	-70
S6F-30.2Y	30	Q _o	43400	37400	31750	26500	21700	17420	13690	10540	7920	5800

Pe	2,53	0,65	8,78	16,94	15,15	13,42	11,77	10,20	8,74	7,40	
35	Qo	42500	36600	31050	25900	21200	17030	13420	10340	7780	5680
Pe	3,85	1,86	9,89	7,94	6,04	4,21	12,45	10,78	9,23	7,80	
40	Qo	41500	35700	30300	25300	20700	16680	13170	10150	7590	
Pe	25,20	23,10	21,01	18,96	16,95	15,00	13,14	11,37	9,72		
45	Qo	40450	34800	29550	24700	20300	1660	12930	9920		
Pe	26,59	24,37	22,16	19,98	17,86	15,80	13,83	11,96			
50	Qo	39500	34000	28850	24100	19870	16060	12650			
Pe	28,07	25,69	23,33	21,01	18,75	6,57	14,49				
55	Qo	38800	33250	28200	23600	19490	15740				
Pe	29,64	27,06	24,51	22,03	19,63	17,32					

Qo – Cooling capacity [Watt], Pe – Power consumption [kW]

Without liquid subcooling 50Hz (R404A/R507A)

Compressor type	Cond. temp. [°C]	Qo / Pe		Evaporating temperature °C								
		-25	-30	-35	-40	-45	-50	-55	-60	-65	-70	
S6F-30.2Y	30	Qo	38050	31700	26050	21000	16620	12880	9790	7280	5300	3760
Pe	1,26	18,81	16,61	14,64	12,90	11,37	10,02	8,86	7,85	7,00		
35	Qo	36000	29950	24500	19710	15570	12070	9180	6840	4980	3510	
Pe	22,11	19,66	17,41	15,37	13,53	11,88	10,42	9,13	8,02	5,72		
40	Qo	33800	28000	22900	18390	14530	11280	8590	6400	4620		
Pe	22,95	20,53	18,26	16,15	14,20	12,42	10,82	9,41	8,18			
45	Qo	31450	26050	21250	17080	13510	10500	8000	5920			
Pe	23,82	21,42	19,12	16,94	14,89	13,00	11,26	9,71				
50	Qo	28950	24000	19590	15770	12490	9710	7370				
Pe	24,72	22,31	19,98	17,74	15,61	13,61	11,76					
55	Qo	26400	21900	17890	14430	11440	8880					
Pe	25,67	23,19	20,80	18,52	16,34	14,27						

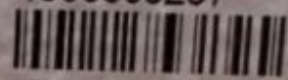
Qo – Cooling capacity [Watt], Pe – Power consumption [kW]



Type S6F-30.2Y-40P

S.No. 1600308267

BITZER KÜHLMASCHINENBAU GMBH
Made in Germany



Nominal Voltage V 3Ph~	Frequ. Hz	Operat. C. A (max.)	Locked Rotor C.		Displacem. m³/h	Speed RPM
			A (Y)	A (YY)		
380-420	50	51	135	220	101,4	1450
440-480	60	51	135	220	122	1750

IP 54 LP/HP max. 19 / 28 bar





Private Picture Copyright : WWW.MBSM.PRO

Mbsm_dot_pro_private_PDF_S6F-30.2Y-40PTélécharger

Compressor type Displacement at 1450 min-1 Number of cylinders Oil charge Weight Pipe connections Motor Max. operating current Max. power consumption Starting

current(lockedrotor)LPHPDLSLdm3KgmpouceAmpkWAm .
Y/YYS6F-30.2Y101,150,567.752343513/842
5415/8
21/8380 ..420YY/3/50
440 ..480 YY/3/605131,9135/220