

Compressor, LG, V75LAEG, V 75 Leag, 1/4 hp, 167 k/cal, 7.46 cc, 220v/50hz, Ptc, Rsir, compressor cooling, Lbp, r134a

Category: compressor

written by Amina | 19 October 2023



Private Picture Copyright : WWW.MBSM.PRO

Compressor, LG, V75LAEG, V 75 Leag, 1/4 hp, 167 k/cal, 7.46 cc, 220v/50hz, Ptc, Rsir, compressor cooling, Lbp, r134a

ZMC, zanussi, Made in Egypt,
Compressor, Frost Free Freezer,
GM90AZ, EGM90AZ, 155W, 1/5Hp, 134A,
150G, Electrostar Freezer, 260L
CRoss, 235L Storage , 220v-50H, 1.2A,

Class T

Category: compressor

written by www.mbsm.pro | 19 October 2023



OO HUAWEI NOVA 5T
OO AI QUAD CAMERA

COMPRESSOR TECHNICAL DATA

General Data

Refrigerant:	R134a
Application:	LBP
Evaporating Temperature Range:	-30°C to -10°C
Voltage/Frequency:	220/240V/50 HZ
Compressor Cooling:	Static
Expansion Device:	Capillary Tube
Packaging Quantity:	Multi – 96:120 pcs
Approvals:	CE-VDE-GOST

Mechanical Data

Oil Charge:	300 cm ³
Oil Type Configuration:	ester
Oil Type Viscosity:	19 cSt
Weight:	10 kg

Electrical Data

Motor Type:	RSIR / RSCR*
Voltage working range at 50 Hz:	187-264V
Maximum Motor Temperature:	130°C
Locked Rotor Current:	14.46 / 9.86 A
Start Winding Resistance:	23.40Ω at 25°C
Run Winding Resistance:	8.08 Ω at 25°C
Phase:	1 ph

External Characteristics

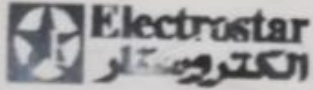
Internal Diameter	(mm)
Suction Connector	6.5
Discharge Connector	4.9
Process Connector	6.5
Material	Copper

Electrical Components

Starting Device:	PTC 14Ω
Motor Protection:	T0490/xx

ZMC **GM90AZ** 1137
R 134 a 220-240V-50Hz
MADE IN EGYPT
PGF CE
474
0002266

OO HUAWEI NOVA 5T
OO AI QUAD CAMERA



Made In Egypt

Frost Free Freezer

Model **ES 260 NF** طراز

Voltage **220 V - 50 HZ** **1.2A** **155 W**

Freezing Capacity 22 Kg/24Hr Freezer Stopage Volume 235 Lit.

Total Gross Volume 260 Lit Refrig. Storage Volume



024287

R134a **150g** وزن وسيط

التبريد

Class T صنع في مصر

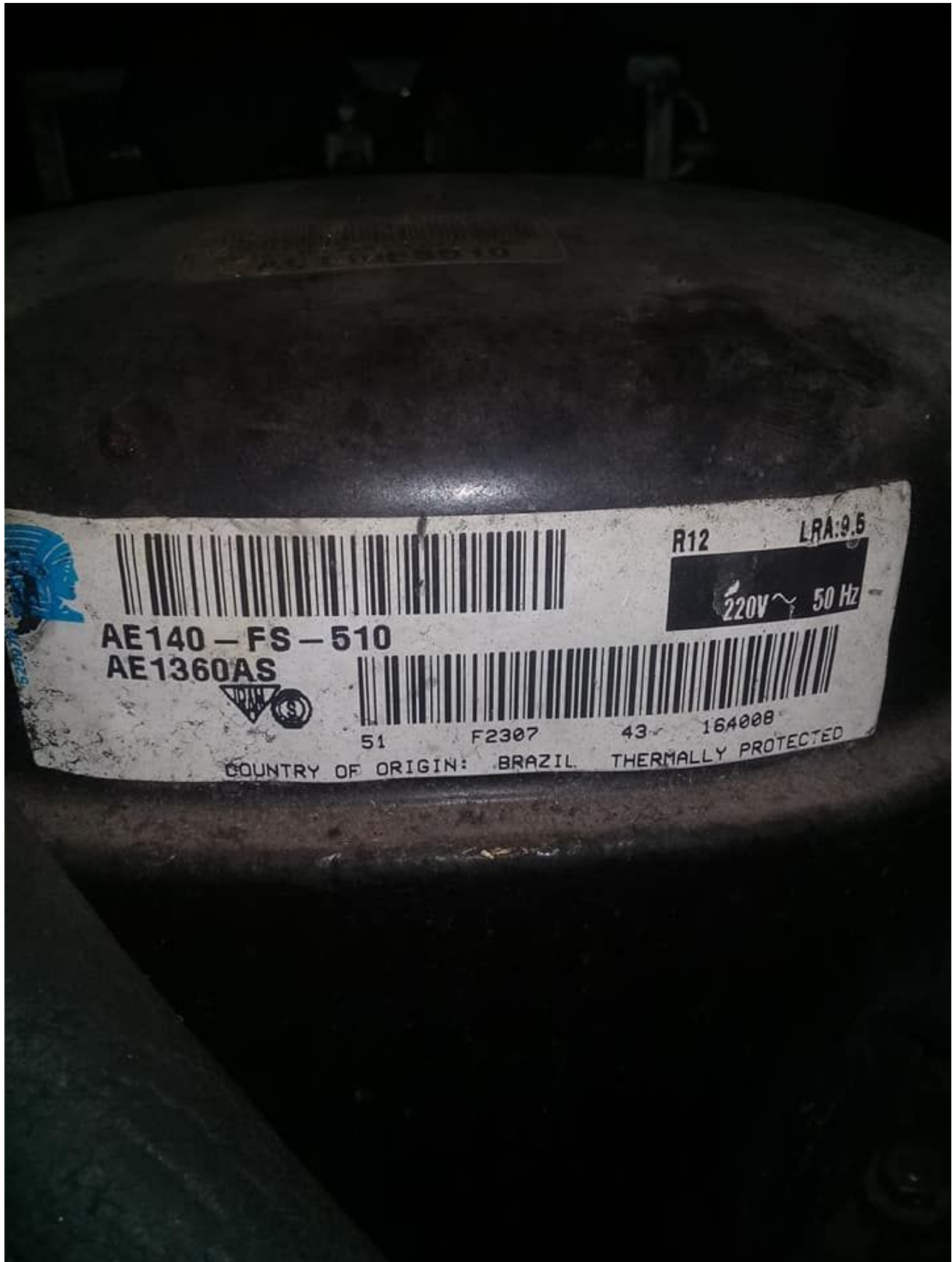
max. lamp input	Without	15 W
Protection Rating	IPX 4	
According To	ES 6000 / 2008 - ISO 15502 / 2005	

OO HUAWEI NOVA 5T
OO AI QUAD CAMERA

TECUMSEH EUROPE, COMPRESSEUR,
REFROIDISSEUR, AE1360AS, 1/5 HP,
AE140-FS-510, Lra 9.5, LBP, R12,
220-240V ~ 50Hz

Category: compressor

written by www.mbsm.pro | 19 October 2023



Private Picture Copyright : WWW.MBSM.PRO

Model:AE1360AS

Product Description

Type: Reciprocating

Application: LBP – Low Back Pressure

Refrigerant: R12

Voltage/Frequency: 220-240V ~ 50Hz

Product Specifications

Performance

Refrigeration Capacity Input Power Efficiency

EVAP

TEMP COND AMBIENT RETURN LIQUID

Condition TEMP TEMP GAS TEMP

Test

Voltage Btu/h kcal/h W W Btu/Wh kcal/Wh W/W

ASHRAE

240V ~

50HZ 560 141 164 157 3.57 .9 1.05

-23°C (-

10°F) 54°C (130°F) 32°C (90°F) 32°C (90°F) 32°C (90°F)

General

Evaporating Temp. Range: -34.4°C to -12.2°C (-30°F to 10°F)

Motor Torque:

Low Start Torque

(LST)

Compressor Cooling: Static

Mechanical

Weight: 10.231

Weight Unit of Measure: KG

Displacement (cc): 7.55

Oil Type: N/A

Viscosity (cSt): N/A

Oil Charge (cc): N/A

Electrical

Voltage Range (50 Hz): 198-253

Voltage Range (60 Hz): N/A

Locked Rotor Amps (LRA): 11

Rated Load Amps (RLA 50 Hz): 1.12

Rated Load Amps (RLA 60 Hz): N/A

Max. Continuous Current (MCC in Amps): N/A

Motor Resistance (Ohm) – Main: 11.06

Motor Resistance (Ohm) – Start: 44.87

Motor Type: RSIR

Overload Type: N/A

Relay Type: Current Relay



Private Picture Copyright : WWW.MBSM.PRO

Mbsm_dot_pro_private_PDF_AE1360ASTélécharger
Mbsm_dot_pro_private_PDF_AE1360AS-1Télécharger
Mbsm_dot_pro_private_PDF_AE1360AS-2Télécharger

KCE444HAG , 3/8 Hp , 230V, 50Hz, 1Phase ,High / Medium temperature (HBP / CBP), R-134a

Category: Technologie,Tester ok
 written by www.mbsm.pro | 19 October 2023

High Back Pressure			Performance Nominals						Commercial Back Pressure		
Model	HP	Displacement cc per Rev	Capacity						Cooling Type (CFM)	Oil Charge Qty (cc)	Net Wt. (Kg.)
			7.2°C			-6.7°C					
			Btu/Hr.	kCal/Hr.	Watt	Btu/Hr.	kCal/Hr.	Watt			
R134a, 50 Hz, 1 Phase											
KCE419HAG	1/6	5.79	1585	399	465	860	217	252	Fan 350	310	10.2
KCN413CAG	1/6	6.15	-	-	-	1080	272	316	Fan 350	340	9.7
KCE425HAG	1/5	7.58	2145	540	629	1075	271	315	Fan 350	310	10.8
KCN416CAG	1/5	7.31	-	-	-	1380	338	392	Fan 350	340	9.7
KCE432HAG	1/4	9.42	2690	678	788	1330	332	390	Fan 350	310	11.8
KCE444HAG	3/8	12.05	3675	926	1077	1880	474	551	Fan 350	310	11.8
KCJ444HAG	3/8	12.58	3700	932	1064	1720	433	504	Fan 350	890	20.2
KCN463HAG	1/2	15.33	5250	1323	1538	3130	789	917	Fan 350	380	11.5
KCJ467HAG	1/2	18.27	5600	1411	1640	2830	713	829	Fan 350	890	21.0
KCJ498HAG	3/4+	25.91	8200	2066	2402	4100	1033	1201	Fan 350	890	21.5
R134a, 60 Hz, 1 Phase 230 V											
KCE432HAG	1/4	9.42	3225	813	944	1595	402	467	Fan 350	310	11.8
KCE444HAG	3/8	12.05	4275	1077	1252	2187	551	640	Fan 350	310	11.8
KCN463HAG	1/2	15.33	6300	1588	1845	3443	868	1008	Fan 350	380	11.5
KCJ467HAG	1/2	18.27	6700	1688	1964	3120	786	914	Fan 350	890	21.0
KCJ498HAG	3/4+	25.91	9250	2330	2710	4633	1167	1358	Fan 350	890	21.5
R134a, 60Hz, 115V											
KCE444HAG	1/3	12.05	4200	1058	1231	2175	548	637	Fan 350 FM	310	11.8

Private Picture Copyright : WWW.MBSM.PRO

KCE444HAG , 3/8 Hp , 230V, 50Hz, 1Phase ,High / Medium temperature (HBP / CBP), R-134a

Compressor Embraco, T/M-B FFU160HAX 1/2 HP, 1,533 BTU/h, R-134 A ,MBP

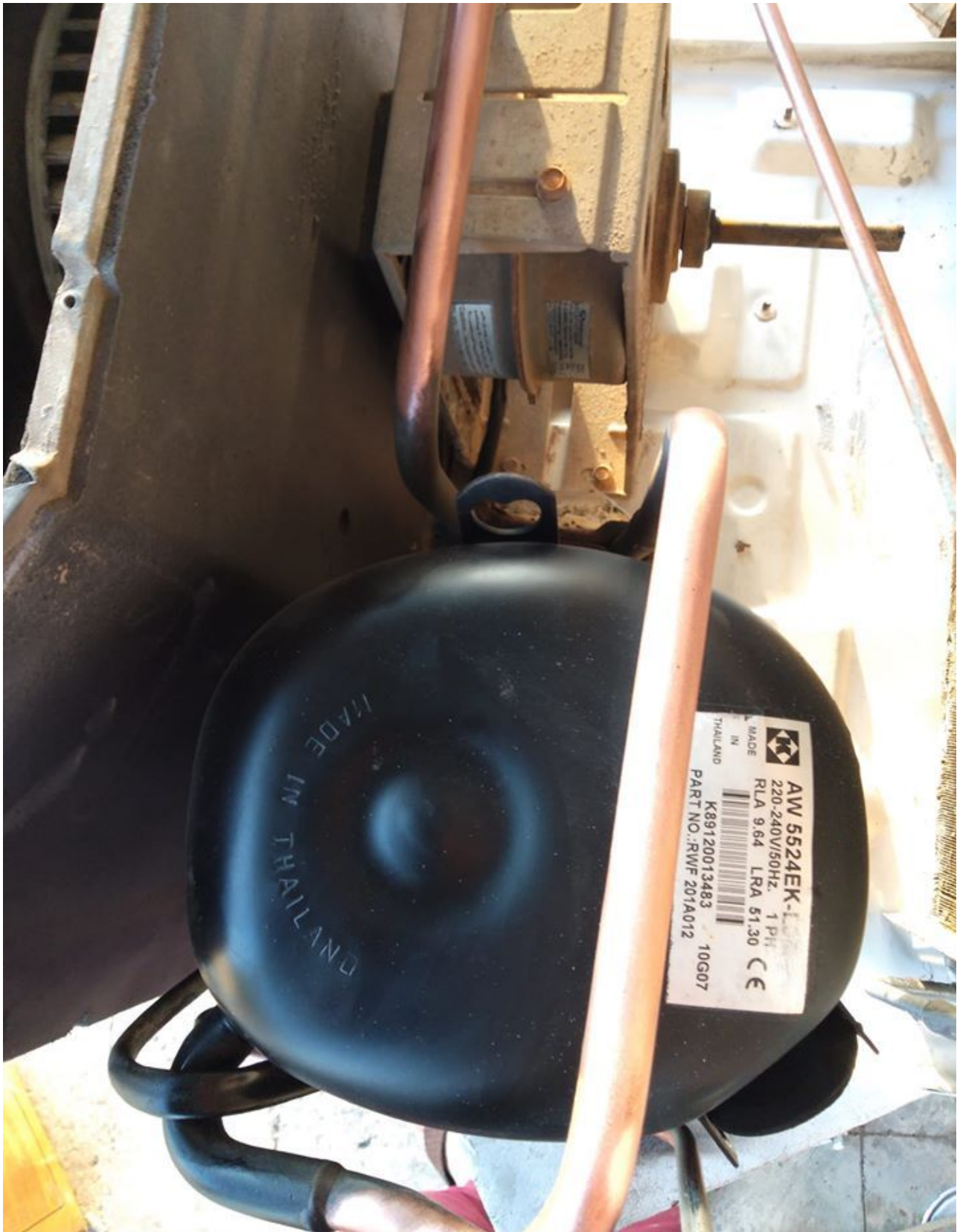
Category: Technologie,Tester ok
 written by www.mbsm.pro | 19 October 2023



Compresor Embraco, T/M-B FFU160HAX 1/2 HP,1,533 BTU/h,R-134 A ,MBP

HERMETIC ,AW5524EK ,Compressor ,
20,950 BTU ,230/1/60 R-22 ,: 220-240
V/50 Hz. , 1 Phase , 1.7458333333 TON

Category: Technologie,Tester ok
written by www.mbsm.pro | 19 October 2023



PictureS Mbsm Dot Pro : www.mbsm.pro

Electrical : 220-240 V/50 Hz. 1 Phase
Nominal Performance
Capacity 6,140 / – Watts
20,950 / – BTU/Hr
5,280 / – Kcal/Hr
Power Input 2,089 / – Watts
Locked Rotor Amps 51.30 / – Amps

Max Continuous Current – / – Amps

Rated Load Amps 9.64 / – Amps

COP 2.94 / – Watts / Watts

EER 10.03 / – BTU/W-Hr

Testing Conditions

Condensing Temperature 54.40 °C 129.9 °F

Evaporating Temperature 7.20 / – °C 45.0 / – °F

Liquid Temperature 46.10 °C 115.0 °F

Return Gas Temperature 35.00 °C 95.0 °F

Ambient Temperature 35.00 °C 95.0 °F

Application

Evaporating Temp. Range HBP, A/C @ 0.00 ° C to 13.00 ° C
(32.0° F to 55.4° F)

Heat Pump -23.30 ° C to 13.00 ° C
(-9.9° F to 55.4° F)

Refrigerant R22

Refrigerant Flow Control Capillary Tube

Compressor Cooling Fan

Compressor and Motor data

Compressor Type Reciprocating

Displacement 43.10 cc.

Oil Type Mineral Oil

Oil Charge 964 cc.

Motor Type P.S.C ; 2 Pole 2,850 / – r/m

Voltage Range 198-264/- Volts 50/- Hz.

Winding Resistance at 25 ° C

Start 2.52 Ohms

Run 1.24 Ohms

Weight with Oil 27.72 Kg.

Weight with Oil and Accessories 28.05 Kg.

Electrical Components

Motor Protector

Type Internal Overload

Model Number 4042KGE661-2

Open / Close 125-135 / 50-70 ° C

1st Cycle trip at 25 ° C 50.00 Amps(main) 30.00 Amps(start)

Motor Starter

Type Potential Relay

Model Number 4043KGE681-4(RVA3G6D)

Pick Up (max.) 180.00-195.00 Volts

Drop Out (min.) 40.00-90.00 Volts

Terminal Cover KGM 901-3

Start Capacitor 88-106 µF 330 VAC.

Disch Resistor for Start Cap –

Run Capacitor 45 µF 370/440 VAC.

Mounting Kit

Rubber Grommet 4007KGM905-2

Sleeve Grommet 4023KGM903-2

Washer –

Since we are constantly improving our product , the

specification are subject to change without notice.
REV. DATE C / N No.
ECN 01-04-14 ECN 0515/13





Dot Pro : www.mbsm.pro

DOCUMENTATION PDF

Mbsm_dot_pro_private_pictureAW5524EKTélécharger

Mbsm.pro , Qb91c19gax5 , 1/4 hp,
qb110c21rpx5, 1/3 hp, Panasonic
, Compressor cooling , 1Ph , 220V

Category: Solutions, Tester ok
written by Jamila | 19 October 2023



PictureS Mbsm Dot Pro : www.mbsm.pro

Mbsm.pro , Qb91c19gax5 , Panasonic , Compressor cooling , 1/3HP , 236W , 1Ph , 220V

mbsm.pro , CUBIGEL Compressor GX21TB,
220-240 VOLTS, 5/8 HP , R134a

Category: Solutions, Tester ok
written by Jamila | 19 October 2023

COMPRESSOR

Displacement (cm ³)	20.72
Diameter (mm)	34.93
Stroke (mm)	21.62
Net Weight (Kg)	17
Oil type	ISO VG 46 ESTER
Oil charge (cm ³)	500

MOTOR

Approximate Power (CV)	5/8
Voltage/Frequency (V/Hz)	220V 50Hz
Voltage range (V)	187-264
Code	82,197
Type	CSIR
Phase number	1 PH
Locked rotor current (A)	26.0
Main W. resist. at 25°C (Ω)	2.45
Start W. resist. at 25°C (Ω)	25.9

APPLICATION

Application	High/Mid. back pressure
Refrigerant	R134a
Evaporating (°C)	-25 to 10
Expansion	Capillar/Valve
Comp. cooling	Fan cooled
Max. ambient temp. (°C)	43

NOMINAL PERFORMANCE

	CYCLE C	CYCLE D
Cooling capacity (W)	1550	1855
Input power (W)	818	850
EER (kcal/Wh)	1.62	1.87
COP (W/W)	1.89	2.18
Current (A)	5.16	5.29

TEST CONDITIONS

	CYCLE C	CYCLE D
Evaporating temp. (°C)	5.0	7.2
Condensing temp. (°C)	55.0	55.0
Liq.t. entering expan. (°C)	55.0	46.0
Ambient t. and return (°C)	32.0	35.0
Tens/Freq (V/Hz)	220V 50Hz	220V 50Hz

ELECTRICAL COMPONENTS

Relay	9660 A 180	MTRP 16
Pick-Up (A)	16.70	16.70
Drop-Out (A)	14.00	14.00
Protector	MRA38128	T0535/G.
Current (A)	17.0	17.0
Time check (seg)	7.5-14	7.5-14
Disc temp. (Open/Close) (°C)	105.0 / 52.0	105.0 / 52.0

PictureS Mbsm Dot Pro : www.mbsm.pro

mbsm.pro , CUBIGEL Compressor GX21TB, 220-240 VOLTS, 5/8 HP , R134a

www.mbsm.pro, Electrolux GL75AA Refrigerator 1/5 HP, Compressor Cooling solution for Refrigerators

Category: Technologie, Tester ok
 written by Jamila | 19 October 2023



PictureS Mbsm Dot Pro : www.mbsm.pro

www.mbsm.pro, Electrolux GL75AA Refrigerator 1/5 HP, Compressor Cooling solution for Refrigerators