

COMPRESSEUR ZEL , 200w ,HDL200A, R600a, LBP ,1/4 hp

Category: Technologie,Tester ok
written by www.mbsm.pro | 1 April 2020



Private Picture Copyright : WWW.MBSM.PRO

Model	Motor	Disp.	Power	Motor type	Freq.	Cooling capacity	Input power	Input power (RC)	COP	COP (RC)	Run capacitor	Height	Netweight
GDL145D	Cu	4.4	1/8	RSIR/RSCR	60	145	94	87	1.55	1.67	10	161	7.3
GDL175D	Cu	5.3	1/6	RSIR/RSCR	60	175	112	106	1.56	1.65	10	161	7.3
GML140A	Al	4.9	1/6	RSIR	50	140	112	0	1.25	0	0	152	6.3
GML160A	Al	5.7	1/6	RSIR	50	160	128	0	1.25	0	0	161	6.9
GML180A	Al	6.5	1/5	RSIR	50	180	144	0	1.25	0	0	161	7.1
GML200A	Al	7	1/5	RSIR	50	200	160	0	1.25	0	0	164	7.3
GML145D	Al	4.4	1/7	RSIR/RSCR	60	145	97	92	1.5	1.57	10	164	7.1
GML175D	Al	4.9	1/6	RSIR/RSCR	60	175	118	112	1.48	1.56	10	164	7.1
GPL175D*	Cu	4.9	1/7	CSCR	60	175		97		1.8	10	161	7.6
GXL175D	Cu	4.9	1/7	RSCR	60	175		101		1.73	10	164	7.6

PictureS Mbsm Dot Pro : www.mbsm.pro

TECHNICAL CHARACTERISTICS

SCHEME COMPRESSORS

OF

ELECTRIC DIAGRAMS

ASSEMBLY

TECHNICAL SCHEMES

Model	Motor	Speed range	Displ., cm ³	Motor type	Freq. hz	Cooling Capacity, w -23.3 °C/(+7.2 °C)*	Input Power, BT		COP, w/w		Run Capacitor, µF	Height, mm	Net Weight, kg	Type of cooling, S/F
							without RC	with RC	without RC	with RC				
HDL100A	Al	-	5,7	RSCR	50	98	-	60	-	1,64	2,5	161	6,9	-
HDL100A(I)	Cu/Al	-	5,7	RSCR	50	98	-	57	-	1,72	2,5	164	7,2	-
HDL125A	Al	-	7,0	RSCR	50	123	-	72	-	1,70	2,5	164	7,2	-
HDL125A (I)	Cu/Al	-	7,0	RSCR	50	123	-	69	-	1,79	2,5	164	7,2	-
HDL140A	Al	-	8,0	RSCR	50	140	-	80	-	1,74	2,5	164	7,2	-
HDL160A	Al	-	9,2	RSCR	50	160	-	90	-	1,77	3	164	7,2	-
HDL170A	Al	-	9,5	RSCR	50	172	-	101	-	1,70	4	164	7,2	-
HDL190A	Cu/Al	-	10,5	RSCR	50	185	-	106	-	1,75	4	164	7,2	-
HDL200A	Cu/Al	-	12,0	RSCR	50	200	-	118	-	1,70	4	164	7,2	-
HDL80A	Al	-	4,9	RSCR	50	80	-	49	-	1,62	2	161	6,9	-
HML100A	Al	-	5,7	RSCR	50	98	-	71	-	1,39	2	152	6,3	-
HML125A	Al	-	7,0	RSCR	50	125	-	83	-	1,45	2	152	6,3	-
HML140A	Al	-	8,0	RSCR	50	140	-	90	-	1,56	3	152	6,3	-
HML170A	Al	-	9,5	RSCR	50	165	-	114	-	1,45	3	161	6,9	-
HML200A	Al	-	12,0	RSCR	50	200	-	138	-	1,45	4	164	7,2	-
HML80A	Al	-	4,9	RSCR	50	80	-	55	-	1,45	2	152	6,3	-
HPL100A	Cu	-	5,7	CSCR	50	100	-	51	-	1,96	2	161	7,3	-
HPL125A	Cu	-	7,0	CSCR	50	125	-	64	-	1,96	2	161	7,3	-
HPL140A	Cu	-	8,0	CSCR	50	145	-	74	-	1,95	2	161	7,3	-
HXL100A	Cu	-	5,7	RSCR	50	98	-	52	-	1,87	2	161	7,3	-
HXL125A	Cu	-	7,0	RSCR	50	123	-	65	-	1,90	2	161	7,3	-
HXL140A	Cu	-	8,0	RSCR	50	140	-	73	-	1,91	2	161	7,3	-
HXL170A	Cu	-	9,3	RSCR	50	175	-	93	-	1,88	2	161	7,3	-
HXL190A	Cu	-	10,5	RSCR	50	190	-	103	-	1,85	3	164	7,3	-
HXL190A (B)	Cu	-	12,0	RSCR	50	200	-	108	-	1,85	3	164	7,3	-
HXL50A	Cu	-	4,9	RSCR	50	53	-	31	-	1,70	1,5	164	7,3	-

PictureS Mbsm Dot Pro : www.mbsm.pro



Private Picture Copyright : WWW.MBSM.PRO

C 58708690

ZEL HDL200A 16-44
220-240V 50Hz
SUCTION >
8 269 0902610 5
ZANUSSI ELETTROMECCANICA COMPRESSOR







PictureS Mbsm Dot Pro : www.mbsm.pro

كباسات ZEL ومواصفاتها مع مقاسات الثلاجات والفریزارات المختلفة

موديل الثلاجة	الحجم بالقدم 3	الحجم باللتر	قدرة الضاغط							
			R134a			R600a				
			Model	W	HP	Model	W	HP		
LBP										
كباسات التجميد										
Domestic single door 	4	5	113	160	GML70G	72	1/12	HMM70A	70	1/12
	6	7	170	198	GML70G	72	1/10	HMM70A	70	1/10
	8	9	226	254	GML90G	94	1/8	HMM90A	90	1/8
	9	13	283	370	GML125G	125	1/6	HML125AT	130	1/6
Domestic double door 	9	12	226	340	GML140AT	148	1/5	HML140AT	140	1/5
	13	17	370	481	GML200AT	195	1/4	HML200A	200	1/4
	17	22	509	623	GTH88AA	240	1/3	HKD14AA	240	1/3
Upright and chest freezer 	4	6	113	120	GML125G	125	1/6	HML125AT	130	1/6
	6	8	198	226	GML140AT	148	1/5	HML140AT	140	1/5
	8	12	254	340	GML200AT	195	1/4	HML200A	200	1/4
	12	18	370	509	GTH88AA	240	1/3	HKD14AA	240	1/3

PictureS Mbsm Dot Pro : www.mbsm.pro

GML70G,
GML90G,
GML125G,
HMM70A,
HMM90A,
HML125AT,
GML140AT
GML200AT,
GTH88AA,
HML140AT,
HML200A,
HKD14AA,
GML125G,
GTH88AA,

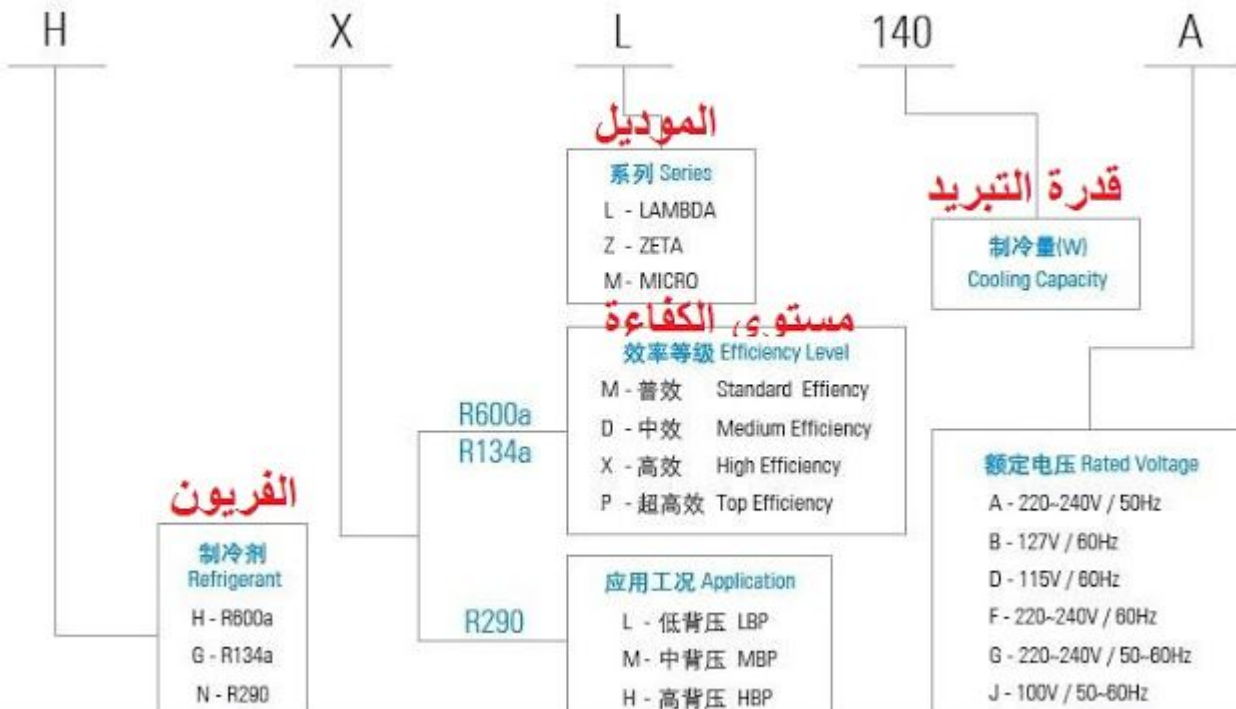
GDL145D,
GDL175D,
GML140A,
GML160A,
GML180A,
GML200A,
GML145D,
GML175D,
GPL175D*,
GXL175D,
GXL200D,

R600a**مواصفات قياسات التجميد LBP**

Model الموديل	Voltage الفولت	Hz التردد	Cooling Capacity سعة التبريد - القدرة التبريدية		
			W	HP	
HMM70A	220 - 240	50	70	0.094	1/10
HMM80A	220 - 240	50	80	0.107	1/10
HMM90A	220 - 240	50	90	0.121	1/8
HMM100A	220 - 240	50	100	0.134	1/8
HML100A	220 - 240	50	103	0.138	1/8
HML125A	220 - 240	50	121	0.162	1/6
HML125AT	220 - 240	50	130	0.174	1/6
HML140AT	220 - 240	50	140	0.188	1/6
HML155A	220 - 240	50	155	0.208	1/5
HML170AT	220 - 240	50	170	0.228	1/5
HML190A	220 - 240	50	190	0.255	1/4
HML200A	220 - 240	50	200	0.268	1/4

R134a**كباسات التجميد LBP**

Model الموديل	Voltage الفولت	Hz التردد	Cooling Capacity سعة التبريد - القدرة التبريدية		
			W	HP	
GML70G	220 - 240	50 - 60	72	0.097	1/12
GML80G	220 - 240	50 - 60	80	0.107	1/10
GML90G	220 - 240	50 - 60	94	0.126	1/8
GML110AT	220 - 240	50	113	0.151	1/7
GML125G	220 - 240	50 - 60	122	0.164	1/6
GML140G	220 - 240	50 - 60	136	0.182	1/6
GML140AT	220 - 240	50	148	0.198	1/5
GML180G	220 - 240	50 - 60	162	0.217	1/5
GML200AT	220 - 240	50	195	0.261	1/4
GTH88AA	220 - 240	50	240	0.322	1/3
GTH93AA	220 - 240	50	260	0.349	1/3
GTM93AA	220 - 240	50	280	0.375	3/8
GTM10AA	220 - 240	50	300	0.402	3/8+

PictureS Mbsm Dot Pro : www.mbsm.pro**Lambda/Zeta/Micro**PictureS Mbsm Dot Pro : www.mbsm.pro

Tau



PictureS Mbsm Dot Pro : www.mbsm.pro

كباسات ZEL ومواصفاتها مع مقاسات الثلاجات والفریزارات المختلفة

موديل الثلاجة	الحجم بالقدم 3	الحجم باللتر	قدرة الضاغط							
			R134a			R600a				
			Model	W	HP	Model	W	HP		
LBP كباسات التجميد										
Domestic single door 	4	5	113	160	GML70G	72	1/12	HMM70A	70	1/12
	6	7	170	198	GML70G	72	1/10	HMM70A	70	1/10
	8	9	226	254	GML90G	94	1/8	HMM90A	90	1/8
	9	13	283	370	GML125G	125	1/6	HML125AT	130	1/6
Domestic double door 	9	12	226	340	GML140AT	148	1/5	HML140AT	140	1/5
	13	17	370	481	GML200AT	195	1/4	HML200A	200	1/4
	17	22	509	623	GTH88AA	240	1/3	HKD14AA	240	1/3
Upright and chest freezer 	4	6	113	120	GML125G	125	1/6	HML125AT	130	1/6
	6	8	198	226	GML140AT	148	1/5	HML140AT	140	1/5
	8	12	254	340	GML200AT	195	1/4	HML200A	200	1/4
	12	18	370	509	GTH88AA	240	1/3	HKD14AA	240	1/3

PictureS Mbsm Dot Pro : www.mbsm.pro



Variable Speed Range 变频系列

R600a

型号	电机	转速范围	排气量	电机类型	制冷量	输入功率	性能系数	高度	重量	认证
Model	Motor	Speed Range	Displ.	Motor Type	Cooling Capacity	Input Power	COP	Height	Net Weight	Certification
		rpm	cm ³		w	w	w/w	mm	kg	

220-240V/50Hz

T系列变频 T Series VSC

HKD66FSK	Al	1400-4000	6.6	PMSM	45-150	26-85	Up to 1.90	163	7.1	
HKD75FSK	Al	1400-4000	7.5	PMSM	52-170	29-96	Up to 1.90	163	7.1	
HKD86FSK	Al	1400-4000	8.6	PMSM	60-190	35-105	Up to 1.90	163	7.1	
HKD93FSK	Al	1400-4000	9.3	PMSM	70-210	40-125	Up to 1.90	163	7.1	
HKD10FSK	Al	1400-4000	10.5	PMSM	83-235	49-132	Up to 1.90	163	7.1	CCC
HKD12FSK	Al	1400-4000	11.5	PMSM	95-270	51-154	Up to 1.90	163	7.1	CCC
HKD66FSK I	Cu	1400-4000	6.6	PMSM	45-150	25-82	Up to 1.95	163	8.0	
HKD75FSK I	Cu	1400-4000	7.5	PMSM	52-170	28-93	Up to 1.95	163	8.0	
HKD86FSK I	Cu	1400-4000	8.6	PMSM	60-190	32-102	Up to 1.95	163	8.0	
HKD93FSK I	Cu	1400-4000	9.3	PMSM	70-210	38-115	Up to 1.95	163	8.0	
HKD10FSK I	Cu	1400-4000	10.5	PMSM	83-235	44-123	Up to 1.95	163	8.0	CCC
HKD12FSK I	Cu	1400-4000	11.5	PMSM	95-270	50-146	Up to 1.95	163	8.0	CCC

Z系列变频 Z Series VSC

HXZ150FSM	Al	1200-4200	6.5	PMSM	42-150	23-80	Up to 1.90	145	6.9	-
HXZ170FSM	Al	1200-4200	7.0	PMSM	50-170	26-92	Up to 1.90	145	6.9	-
HXZ200FSM	Al	1200-4200	8.6	PMSM	56-200	30-103	Up to 1.90	145	6.9	-
HXZ220FSM	Al	1200-4200	9.2	PMSM	68-220	36-120	Up to 1.90	145	6.9	-
HXZ240FSM	Al	1200-4200	9.5	PMSM	75-240	39-125	Up to 1.90	145	6.9	-
HDZ150FSM	Al	1200-4200	6.5	PMSM	42-150	25-88	Up to 1.80	145	6.3	-
HDZ170FSM	Al	1200-4200	7.0	PMSM	50-170	27-98	Up to 1.80	145	6.3	-
HDZ200FSM	Al	1200-4200	8.6	PMSM	56-200	30-110	Up to 1.80	145	6.3	-
HDZ220FSM	Al	1200-4200	9.2	PMSM	68-220	40-132	Up to 1.80	145	6.3	-

Picture5 Mbsm Dot Pro : www.mbsm.pro

Mbsm_dot_pro_private_PDF_catalog_zelTélécharger
COMPRESSEUR ZEL HML170A AU R600A LBP 1/6HP 9.5CM3



C 66817170

ZEL HDL170A 18.32
220-240V 50Hz
SUCTION >
R 600a
B-A13 0008904 2
CE
RoHS
CCC
AP33710



REDMI NOTE 9
AI QUAD CAMERA

WHIRLPOOL , COMPRESSEUR R600 ,1/8 HP
, HKK80AA, LBP Compressor, Top
Efficiency , 220-240V 50Hz

Category: Technologie,Tester ok
written by www.mbsm.pro | 1 April 2020





PictureS Mbsm Dot Pro : www.mbsm.pro

WHIRLPOOL , COMPRESSEUR R600 , 1/8 HP , HKK80AA

R600a • 220-240 V • 50 Hz • KAPPA

Compressor	Code number	Application	CECOMAF Capacity [W] T _c =55°C, T _{liq} =55°C, T _{suc} =32°C Evaporating temperature [°C]						CECOMAF						ASHRAE Capacity [W] T _c =54.4°C, T _{liq} =32.2°C, T _{suc} =32.2°C Evaporating temperature [°C]					
									LBP rating point -25°C / 55°C		MBP rating point -10°C / 55°C		HBP rating point 5°C / 55°C							
			-35	-15	-5	0	10	15	Cooling capacity	COP	Cooling capacity	COP	Cooling capacity	COP	-35	-15	-5	0	10	15
									[W]	[W/W]	[W]	[W/W]	[W]	[W/W]						
HMK80AA	15950000	LBP	55	170				102	1.18	211	1.68			67	207					
HMK95AA	15460700	LBP	67	207				125	1.20	257	1.72			81	253					
HMK12AA	16236200	LBP	82	239				149	1.21	292	1.66			100	291					
HTK55AA	16122700	LBP	32	119				69	1.20	150	1.79			39	146					
HTK70AA	16106100	LBP	44	150				87	1.26	185	1.85			54	182					
HTK80AA	16068300	LBP	55	170				102	1.26	212	1.83			67	207					
HTK95AA	16068200	LBP	71	207				126	1.29	258	1.82			86	252					
HTK12AA	16111600	LBP	82	239				149	1.29	292	1.77			100	291					
HKK55AA	16124400	LBP	32	120				69	1.37	150	2.00			39	146					
HKK70AA	16124500	LBP	44	148				87	1.40	186	1.98			54	181					
HKK80AA	16072100	LBP	55	170				102	1.40	212	1.99			67	207					
HKK95AA	16049700	LBP	69	207				126	1.42	256	1.95			84	252					
HKK12AA	16065900	LBP	82	239				149	1.42	292	1.93			100	291					
HXX55AA	15650400	LBP	36	122				72	1.45	152	2.00			44	149					
HXX70AA	15690400	LBP	47	149				88	1.47	186	2.02			57	181					
HXX80AA	15621800	LBP	58	173				105	1.50	214	2.05			71	210					
HXX95AA	15592900	LBP	73	209				129	1.51	258	2.05			89	255					
HXX12AA	15593100	LBP	83	245				152	1.50	300	2.04			101	299					
HZK95AA	16313100	LBP	73	208				128	1.58	257	2.15			89	254					

PictureS Mbsm Dot Pro : www.mbsm.pro

mbsm.pro , Compresseur Aspera , Embraco ,NEK2168GK , R404a/R507 , LBP ,3/4 HP,nominal output: 707 W

Category: Technologie,Tester ok
written by www.mbsm.pro | 1 April 2020



PictureS Mbsm Dot Pro : www.mbsm.pro

EMBRACO is a company specialized in cooling solutions and world leader in the hermetic compressor market. Our mission: provide innovative solutions for a better quality of life, always attentive to technological excellence and sustainability. Technological leadership, operational excellence and sustainability are some of the pillars which ensure the EMBRACO differential over other companies in the world market. Its products are now considered the favorite leading home appliance manufacturers by major automakers and are spotlighted by manufacturers of commercial refrigeration equipment. With global operations and production capacity exceeding 34 million units a year, the company offers solutions that are differentiated for their innovation and low energy consumption. Its 11.500 employees work in factories and offices located in Brazil (headquarters), China, Italy, Slovakia, Mexico, the United States and Russia. Energy efficiency is constantly sought in the processes, products and relationships with the communities where it operates. Our company is the absolute leader in this segment, being able to offer products that meet the most restrictive international standards regarding energy consumption.

As a worldwide leader, EMBRACO tries to anticipate market changes, and in doing so, our company is in a state of permanent transformation. We continuously assess our processes in order to maintain our leadership within the industry and promote growth, without forgetting the pillars of our organization.

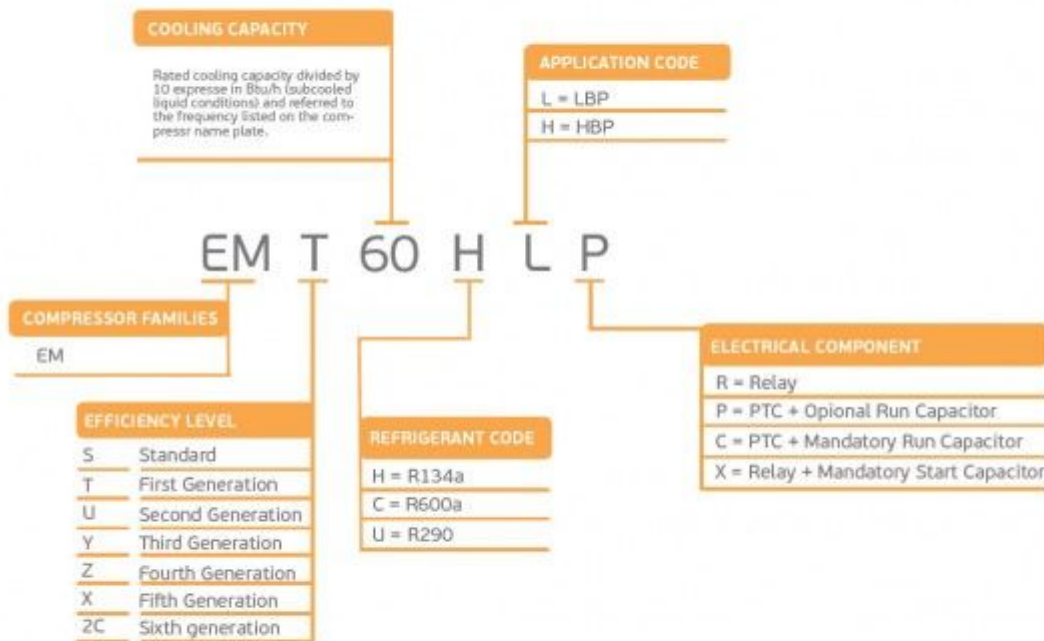
Compressor ASPERA NEK2168GK | NEK 2168 GK

Refrigerant	R404/R507
Working range[stC] LBP	-40 to -10
Nominal capacity [W] (evaporating temperature -23,3C, Condensing temperatur +54,4C)	688
Power supply	220-240V 50Hz
Engine type	CSIR
Displacement [cm ³]	14,28
Weight [kg]	11,6
Evaporating temperature +55 C	

Evaporating Temperature	Cooling Capacity +/-5%	Power Consumption +/-5%	Current Consumption +/-5%	Gas Flow Rate +/-5%	Efficiency +/-7%			
°C	(kcal/h)	(W)	(Btu/h)	(W)	(A)	(kg/h)	(kcal/Wh)	(W/W)
-40	226	263	897	370	3,46	6,01	0,61	0,71
-35	309	359	1.224	435	3,57	8,22	0,71	0,82
-30	413	481	1.640	506	3,73	11,06	0,82	0,95
-25	541	629	2.146	584	3,95	14,52	0,93	1,08
-20	691	803	2.740	668	4,21	18,64	1,03	1,20
-15	863	1.004	3.424	759	4,53	23,43	1,14	1,32
-10	1.058	1.230	4.197	856	4,90	28,92	1,24	1,44

Refrigerant: R404A, R507

		R404A / R507							
		LBP	VOLT. FREQ.	COOL. CAP. [W]	DISPL. [cc]	MBP	VOLT. FREQ.	COOL. CAP. [W]	DISPL. [cc]
NE NEK	NEK2117GK	A	125	4,51	NEK6144GK	A	550	4,51	
	NEK2121GK	A	151	5,44	NEK6165GK	A	743	6,20	
	NEK2125GK	A	182	6,20	NEK6181GK	A	841	7,28	
	NEK2130GK	A	213	7,37	NEK6210GK	A / N	1.005	8,77	
	NEK2134GK	A / N	248	8,77	NEK6213GK	A	1.337	12,11	
	NEK2150GK	A	329	12,11	NEK6217GK	A / N	1.164	14,28	
	NEK2168GK	A	378	14,28					
	NEK2172GK	C	819	16,80					



embraco **NEK**



R404A **LBP**

PictureS Mbsm Dot Pro : www.mbsm.pro

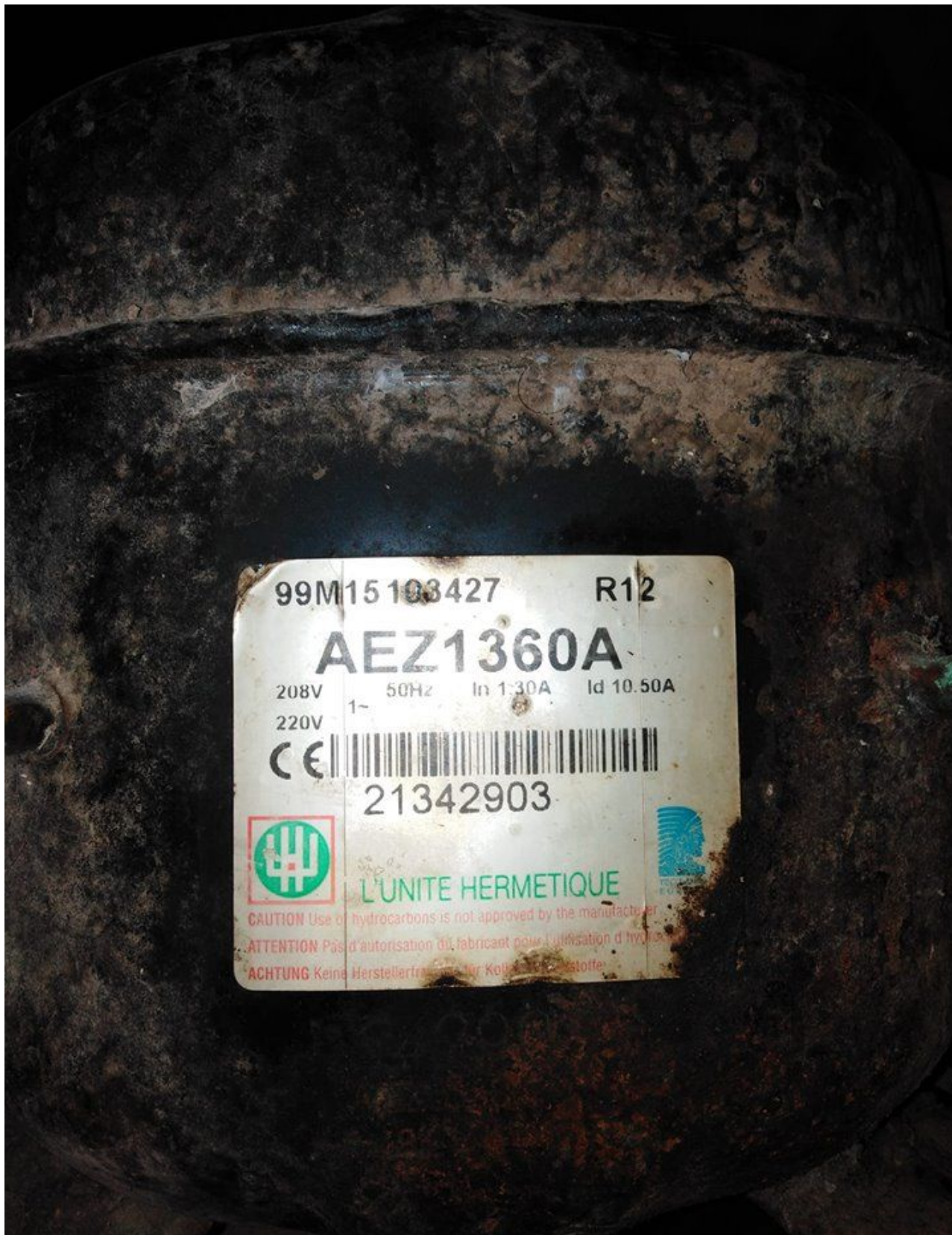


Picture5 Mbsm Dot Pro : www.mbsm.pro

mbsm.pro , Compresseur Aspera , Embraco NEK2168GK , R404A , LBP ,3/4 HP
Compresseur hermetique de Aspera – Embraco NEK2168GK – R404A
3/4 HP
220-240V 50 Hz
Cylindrée = 14.3 CM3
APPLICATIONS = LBP
Moteur type: CSR

www.mbsm.pro, AEZ1360A, Kirby,
Tecumseh, Compressors ,low back,
pressure, models, 240v/50HT , 1PH ,
1/5Hp , Gaz 12A

Category: Solutions,Technologie,Tester ok
written by www.mbsm.pro | 1 April 2020



PictureS Mbsm Dot Pro : www.mbsm.pro

Points forts : Compresseur aez1360a pour réfrigérateur fagor FAGOR
MA-10CA562COMP-QZQAZ

www.mbsm.pro , Original New, ASD53K,
Original New 1/6HP, R134a, LBP,
Wanbao, Refrigerator, compressor,
China, R134A, 220V/50Hz, 1PH, 144W,
Huaguang, Refrigerator Reciprocating

Category: Solutions,Technologie,Tester ok
written by Jamila | 1 April 2020




ASD53K
RoHS
 HUAGUANG
 220~240V~50Hz 1PH
 THERMALLY PROTECTED R134a
 SUCTION ↑ GUANGZHOU REFRIGERATION CO.,LTD.

 A016100207F1475

Picture5 Mbsm Dot Pro : www.mbsm.pro

www.mbsm.pro , Original New, ASD53K, Original New 1/6HP, R134a, LBP, Wanbao, Refrigerator, compressor,China, R134A, 220V/50Hz, 1PH, 144W, Huaguang, Refrigerator Reciprocating

www.mbsm.pro , panne , compresseur, frigorifique , pas de refoulement et présence d'aspiration

Category: Solutions,Technologie,Tester ok
written by mahdi miled | 1 April 2020



PictureS Mbsm Dot Pro : www.mbsm.pro

Solution d'absence de refoulement et de changer le compresseur c'est une clapets
casser

Comment tester les clapets d'un compresseur ?

www.mbsm.pro , Cold ,refrigeration ,compressor 1/4 hp, QD76HG ,HM Series , R134a ,HBP

Category: Solutions,Tester ok

written by www.mbsm.pro | 1 April 2020



PictureS Mbsm Dot Pro : www.mbsm.pro

www.mbsm.pro , Cold ,refrigeration ,compressor 1/4 hp, QD76HG ,HM Series , R134a

www.mbsm.pro ,ZEL ,COMPRESSEUR ,R134a
,1/4 HP ,GVY75AA

Category: Solutions,Tester ok

written by www.mbsm.pro | 1 April 2020



PictureS Mbsm Dot Pro : www.mbsm.pro

Compresseur frigorifique
Puissance en cheval 1/4 CV
Alimentation 220-240 V 50 Hz
Gaz R134a

Mbsm.pro , Compresseur Aspera , Embraco NT6220Z , R134a ,power 3/4 Hp, displacement 22.40 cc , gas R134a HMBP , 220/240V

Category: Solutions, Tester ok
written by www.mbsm.pro | 1 April 2020



Picture5 Mbsm Dot Pro : www.mbsm.pro

Mbsm.pro , Compresseur Aspera , Embraco NT6220Z , R134a ,power 3/4 Hp,
displacement 22.40 cc , gas R134a HMBP , 220/240V

Compresseur hermetique de Aspera – Embraco NT6220Z – R134a
3/4 HP

220V 50Hz 1~

Cylindrée = 22.37 CM3

APPLICATIONS = HBP

Moteur type: CSIR

EMBRACO Asprea Compressor NT6220Z

Technical Details

- 220/240V
- 50Hz
- power 3/4 Hp, displacement 22.40 cc
- gas R134a HMBP

- ASPERA

SKU: 3070180

Suitable For/Compatible With

- NT6220Z ASPERA
- NT6220Z-CSIR ASPERA
- NT6220Z EMBRACO
- NT6220Z-CSIR EMBRACO



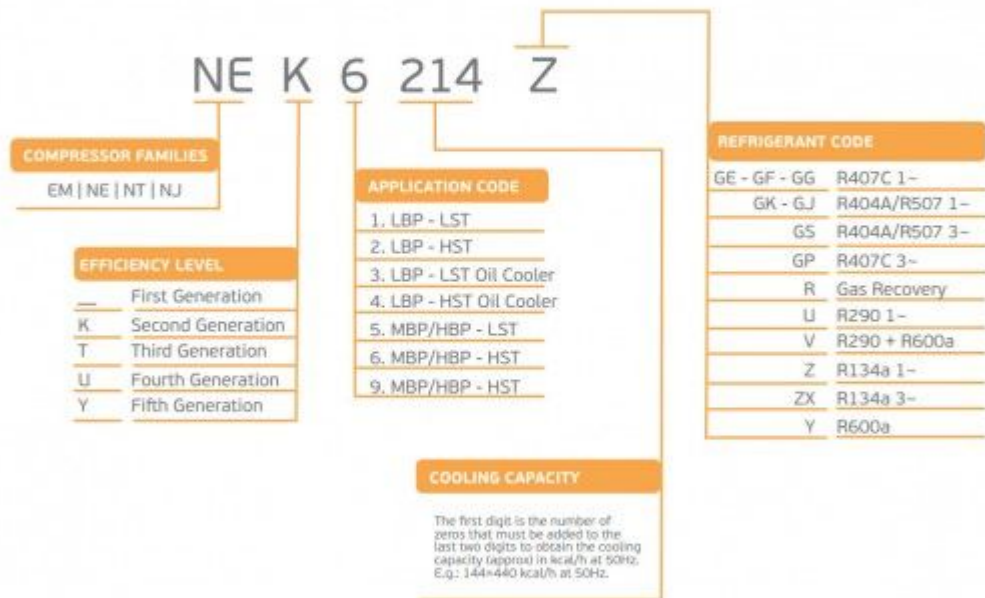
embraco NT



R134a

HBP

EM/NE/NT/NJ



50Hz 50-60Hz	R134a							
	LBP	VOLT. FREQ.	COOL. CAP. [W]	DISPL. [cc]	HBP	VOLT. FREQ.	COOL. CAP. [W]	DISPL. [cc]
NT NTU					NT6215Z	C / N	1.405	17,39
					NT6217Z	A / N	1.619	20,44
					NT6220Z	N	1.744	22,37
					NTU6222ZV	A	2.117	23,70
					NTU6224ZV	A	2.582	27,80

PictureS Mbsm Dot Pro : www.mbsm.pro

MBSM.PRO , Copeland , KCE432HAG
 , Compresseur Hermétique, 1/4HP, R134,
 1ph , Afcon Industrial Equipment, High
 / Medium temperature (HBP / CBP)

Category: Solutions, Tester ok
 written by Jamila | 1 April 2020

Performance Nominals

High Back Pressure			Capacity						Commercial Back Pressure		
Model	HP	Displacement cc per Rev	7.2°C			-6.7°C			Cooling Type (CFM)	Oil Charge Qty (cc)	Net Wt. (Kg.)
			Btu/Hr.	kCal/Hr.	Watt	Btu/Hr.	kCal/Hr.	Watt			
R134a, 50Hz, 1 Phase											
KCE419HAG	1/6	5.79	1585	399	465	860	217	252	Fan 350	310	10.2
KCN413CAG	1/6	6.15	-	-	-	1080	272	316	Fan 350	340	9.7
KCE425HAG	1/5	7.58	2145	540	629	1075	271	315	Fan 350	310	10.8
KCN416CAG	1/5	7.31	-	-	-	1380	338	392	Fan 350	340	9.7
KCE432HAG	1/4	9.42	2690	678	788	1330	332	390	Fan 350	310	11.8
KCE444HAG	3/8	12.05	3675	926	1077	1880	474	551	Fan 350	310	11.8
KCN444HAG	3/8	12.58	3700	932	1064	1720	433	504	Fan 350	890	20.2
KCN463HAG	1/2	15.33	5250	1323	1538	3130	789	917	Fan 350	380	11.5
KCE467HAG	1/2	18.27	5600	1411	1640	2830	713	829	Fan 350	890	21.0
KCN498HAG	3/4 +	25.91	8200	2066	2402	4100	1033	1201	Fan 350	890	21.5
R134a, 60Hz, 1 Phase 230V											
KCE432HAG	1/4	9.42	3225	813	944	1585	402	487	Fan 350	310	11.8
KCN444HAG	3/8	12.05	4275	1077	1252	2187	551	640	Fan 350	310	11.8
KCN463HAG	1/2	15.33	6300	1588	1845	3243	868	1008	Fan 350	380	11.5
KCN467HAG	1/2	18.27	6700	1688	1964	3120	786	914	Fan 350	890	21.0
KCN498HAG	3/4 +	25.91	9250	2330	2710	4633	1167	1358	Fan 350	890	21.5
R134a, 60Hz, 115V											
KCE444HAG	1/3	12.05	4200	1058	1231	2175	548	637	Fan 350 FM	310	11.8
R22, 50Hz, 1 Phase											
KCE443HAE	1/3	8.00	3600	907	1054	1620	408	475	Fan 350	310	11.8
KCE461HAE	1/2	11.50	5100	1285	1494	2590	653	759	Fan 350	590	13.4
KCE511HAE	1	18.27	9350	2356	2740	4210	1061	1234	Fan 350	905	21.5
KCE513HAE	1 1/4	25.91	12800	3225	3749	6366	1604	1865	Fan 350	890	22.5
CR22K6M-PF1	1 1/2+	40.80	19000	4768	5563	8920	2248	2614	Fan 400	1330	29.8
CR30K6M-PF1	2 1/2	51.47	25000	6300	7330	12000	3024	3516	Fan 400	1330	32.5
CR36K6-PFZ	3	59.65	30100	7585	8814	14200	3578	4161	Fan 400	1330	34.9
CR42K6-PFZ	3 1/2	72.08	36100	9100	10570	17300	4360	5069	Fan 400	1330	34.9
R22, 50Hz, 3 Phase											
CR22K6M-TFM	1 1/2+	40.80	18350	4633	5373	8260	2082	2420	Fan 400	1330	29.5
CR30K6M-TFM	2 1/2	51.47	24400	6161	7144	11600	2923	3399	Fan 400	1330	30.0
CR36K6-TF6	3	59.66	29900	7535	8755	14500	3654	4249	Fan 400	1330	31.0
CR42K6-TF5	3 1/2	72.09	35100	8845	10278	17200	4334	5040	Fan 400	1330	32.7
KCG554HAE	4 1/2	99.96	45000	11340	13185	-	-	-	Fan 420	2250	50.1
KCG562HAE	5	117.65	52000	13100	15236	-	-	-	Fan 420	2250	50.7
KCG572HAE	6	133.22	60000	15120	17580	-	-	-	Fan 420	2250	51.4
R22, 60Hz, 1 Phase											
KCE461HAE	1/2	11.50	6100	1537	1788	3082	-	-	Fan 350	510	13.4
KCE511HAE	1	18.27	10500	2646	3077	4210	1061	1234	Fan 350	905	21.5

Private Picture Copyright : WWW.MBSM.PRO

MBSM.PRO ,Copeland ,KCE432HAG ,Compressur Hermétique, 1/4HP, R134, 1ph , Afcon Industrial Equipment,High / Medium temperature (HBP / CBP)