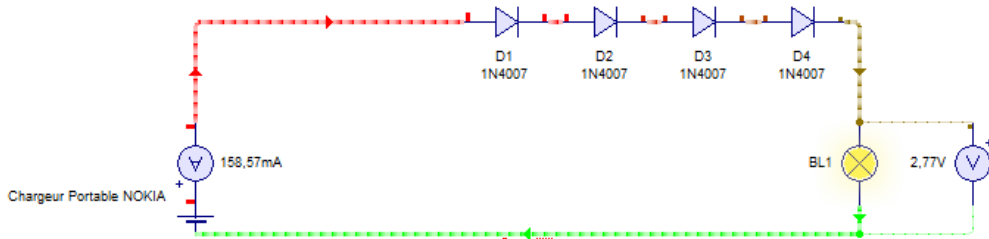


Reduire 5.0v d'un chargeur gsm portable Jusqu'à 3.0V Pour Allimenter un Chauffe-eau 10 Litre Électronique

Category: Développement,electricity,electronique
written by www.mbsm.pro | 2 February 2021



Private Picture Copyright : WWW.MBSM.PRO

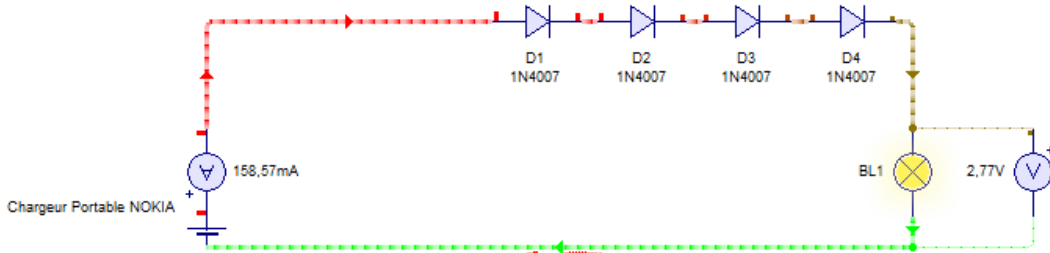
تقليل 5.0 فولت من شاحن جي إس إم محمول
إلى 3.0 فولت لتشغيل سخان مياه
إلكتروني بسعة 10 لترات

Reduire 5.0v d'un chargeur gsm portable
Jusqu'à 3.0V Pour Allimenter un Chauffe-
eau 10 Litre Électronique

Reduce 5.0v of a portable gsm charger to
3.0V to power a 10 liter electronic
water heater



Private Picture Copyright : WWW.MBSM.PRO



Private Picture Copyright : WWW.MBSM.PRO

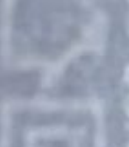


MIND Global Oy

Made in China

Model: FC0200 Output: 5V 1A

Input: AC 100-240V, 50-60Hz, 0.15A



ERIC

CE

VI

Address: Karasaurus 2, 01610 Lappeenranta
FIN-00000013300004512 PHONE: 1022011

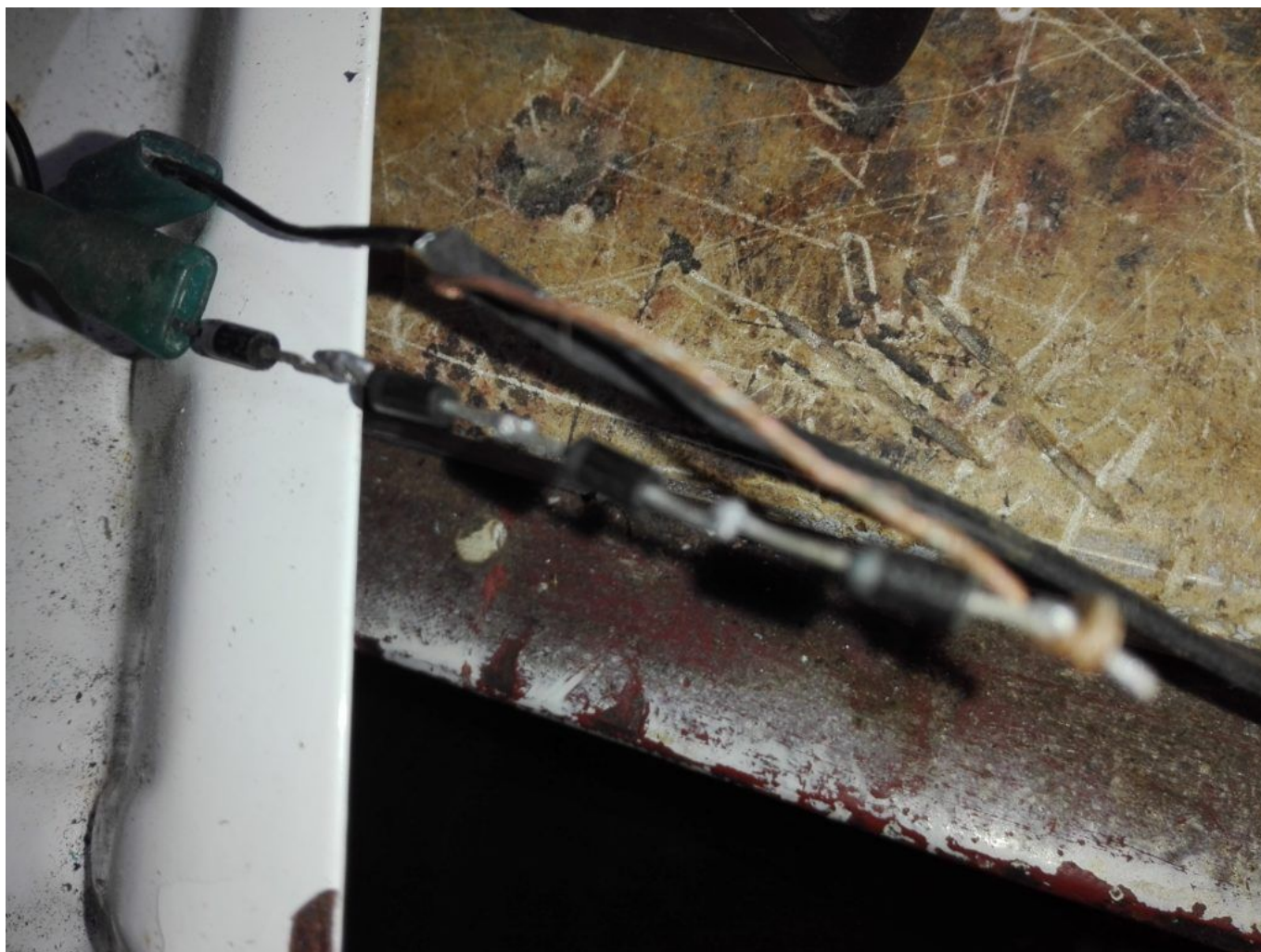


Private Picture Copyright: WWW.MBSM.PRO



Private Picture Copyright: WWW.MBSM.PRO





Private Picture Copyright: WWW.MBSM.PRO

Maintenance, chauffe, eau solaire, BSI, 300L

Category: Plomberie

written by www.mbsm.pro | 2 February 2021



BSI

BIOME SOLAR INDUSTRY

Private Picture Copyright : WWW.MBSM.PRO

Private Picture Copyright : WWW.MBSM.PRO



BSI

BIOME SOLAR INDUSTRY

Private Picture Copyright : WWW.MBSM.PRO

Private Picture Copyright : WWW.MBSM.PRO



Private Picture Copyright: WWW.MBSM.PRO

Exif_JPEG_420



Private Picture Copyright: WWW.MBSM.PRO

Exif_JPEG_420



Private Picture Copyright: WWW.MBSM.PRO

Exif_JPEG_420



Type:

Year of production:

Serial number:

10411505

BIOME 6.0D-N

2014

14B003074

Gross area:

Dimensions:

Weight:

Max operation temp.:

Stagnation temp.:

Max operation pressure:

Fluid content:

Fluid:

2.01 m

1908x1058x75 mm

32 kg

120 °C

196 °C

10 bar

2.4 l

water-propylene glycol



Private Picture Copyright: WWW.MBSM.PRO

Exif_JPEG_420



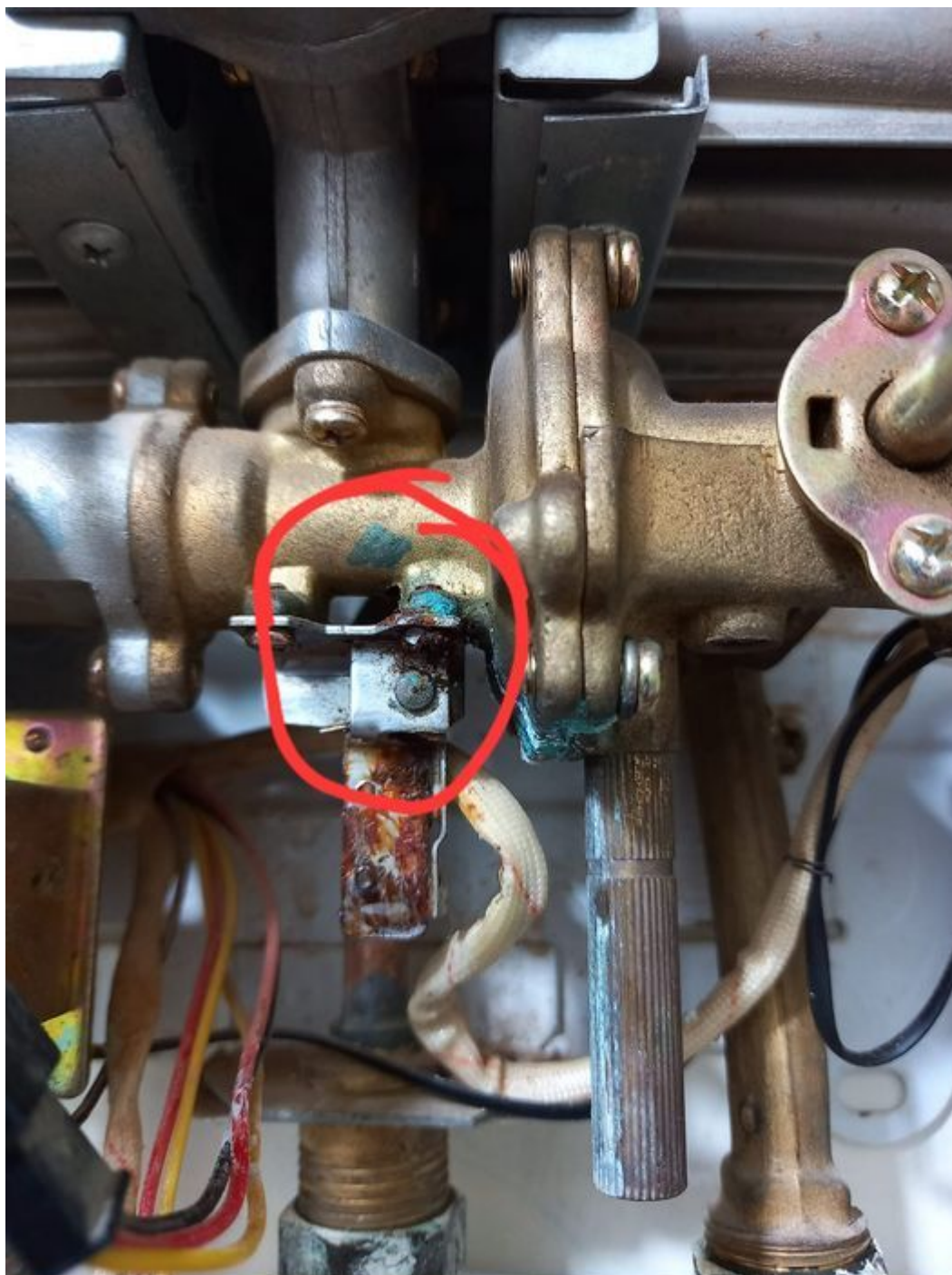
Private Picture Copyright : WWW.MBSM.PRO

Exif_JPEG_420

Core Mécanique du chauffe-eau Électronique 10 litre

Category: Technologie

written by www.mbsm.pro | 2 February 2021



Private Picture Copyright : WWW.MBSM.PRO

Core Mécanique du chauffe-eau Électronique 10 litre

Mbsm.pro, conséquence , de mal fixer ,un chauffe bain électrique 100L

Category: Solutions, Tester ok
written by Jamila | 2 February 2021



PictureS Mbsm Dot Pro : www.mbsm.pro

1. Il peut arriver que les fixations du nouveau chauffe-eau correspondent à celles de l'ancien, mais c'est assez rare.

Le plus souvent, vous devrez prendre les mesures des points d'accrochage du ballon, en fonction de la hauteur désirée. Un gabarit de perçage, souvent fourni par le fabricant, facilite le travail.