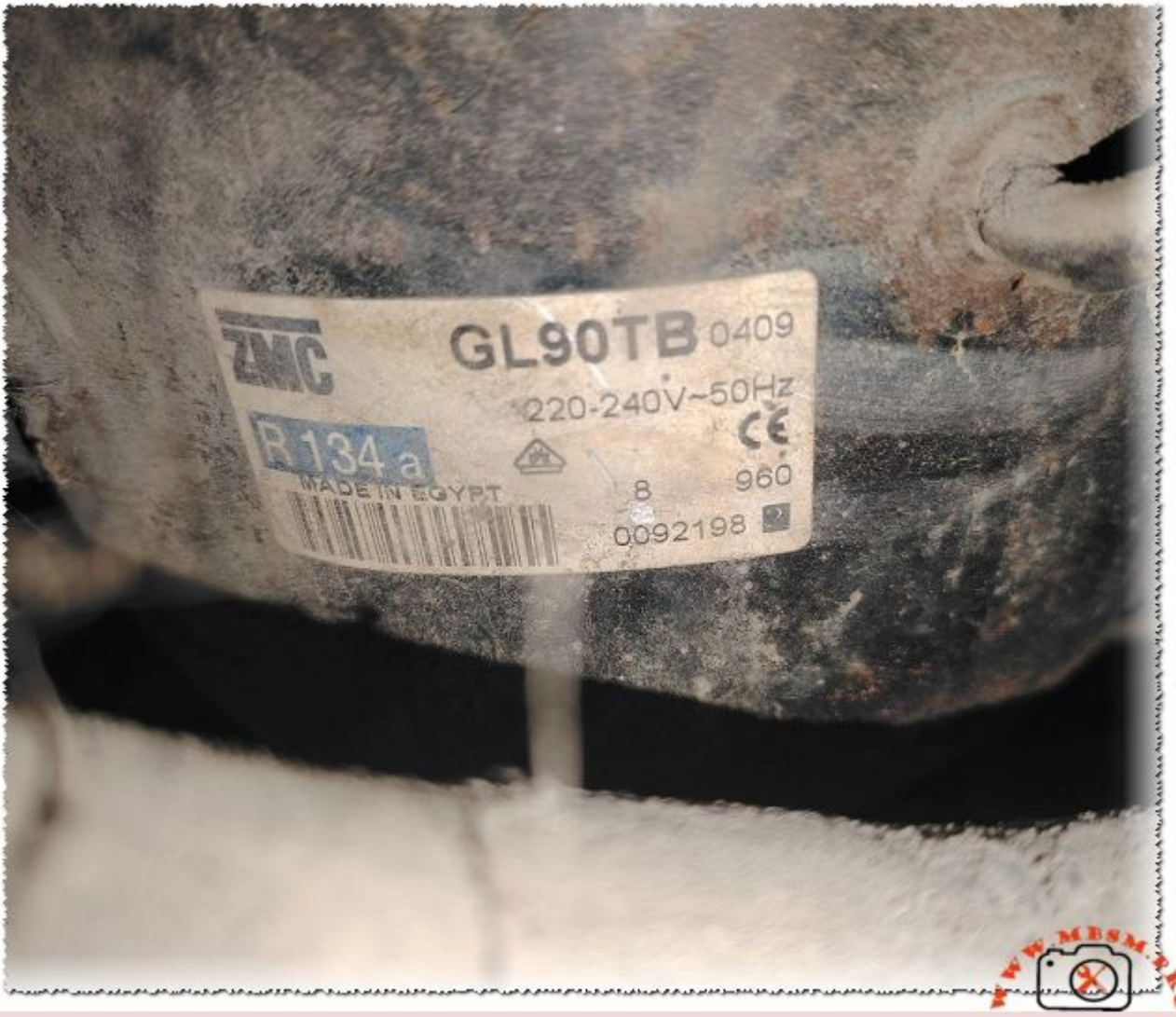


# ZMC GL90TB Compressor Technical Specifications and R134a Replacement Guide

Category: Mbsmpro

written by [www.mbsm.pro](http://www.mbsm.pro) | 31 January 2026



Private Picture Copyright : [WWW.MBSM.PRO](http://WWW.MBSM.PRO)

The ZMC GL90TB is a high-performance 1/4 HP compressor designed for High Back Pressure (HBP) commercial refrigeration. Operating on R134a with a 220-240V supply, it offers a cooling capacity of approximately 2800 BTU/h. This article provides technical specs, COP efficiency metrics, and direct replacement models for professional HVAC technicians and industrial cooling experts.

---

**Mbsm.pro, COMPRESSOR, 1/3 HP ++**

(big), HERMETIC, TECUMSEH, CAE4440Y,  
AE4440Y, HBP, R134a, 220-240V, 50 Hz,  
1 PH, CSIR

Category: compressor

written by [www.mbsm.pro](http://www.mbsm.pro) | 31 January 2026



Private Picture Copyright : [WWW.MBSM.PRO](http://WWW.MBSM.PRO)

Mbsm.pro, COMPRESSOR, 1/3 HP ++ (big), HERMETIC, TECUMSEH, CAE4440Y, AE4440Y,  
HBP, R134a, 220-240V, 50 Hz, 1 PH, CSIR