

Mbsm.pro, compressor, 2DC-2.2Y-40S, Bitzer, semi-hermetic, h8-lsg-40x-ewl-b, 2 hp, 400 v

Category: compressor

written by rober us | 31 March 2023



Private Picture Copyright : WWW.MBSM.PRO

Bitzer Semi-Hermetic Refrigeration Compressor 2DC-2.2Y-40S/2DES-2

Based on one technical concept, our semi-hermetic reciprocating compressors cover the entire spectrum of applications of conventional, chlorine-free HFC as well as natural refrigerants. They distinguish themselves by a robust valve plate design, a high quality and wear resistant drive gear, are easy-to-service and offer good speed control at minimum energy requirements as well as extremely smooth running. In addition, they incorporate an efficient, suction gas cooled integrated motor.

The OCTAGON series of compressors additionally excels by extremely compact dimensions and even further increased smooth running.

Model	Cond temp.	The Evaporation Temperature (R404/50HZ)											
		7.5	5	0	-5	-10	-15	-20	-25	-30	-35	-40	-45
2KC-05.2Y	40	3850	3520	2920	2390	1940	1540	1200	900	650	435	255	1000
2JC-07.2Y	40	5180	4740	3950	3260	2660	2130	1680	1290	960	675	440	240
2HC-1.2Y	40			4090	3340	2700	2140	1650	1240	890	595	345	
2HC-2.2Y	40	6620	6070	5060	4190	3430	2760	2190	1700	1270	915	610	
2GC-2.2Y	40	7540	6910	5780	4790	3930	3190	2450	1990	1520	1110	775	490
2FC-2.2Y	40			5950	4900	3980	3190	2500	1920	1420	1000	650	
2FC-3.2Y	40	9450	8670	7250	6020	4950	4010	3210	2520	1930	1420	1000	
2EC-2.2Y	40			7270	5980	4860	3900	3060	2350	1750	1240	810	
2EC-3.2Y	40	11620	10660	8930	7420	6100	4960	3970	3120	2390	1770	1250	
2DC-2.2Y	40			8490	6980	5670	4530	3560	2720	2020	1420	920	
2DC-3.2Y	40	13510	12390	10380	8610	7080	5750	4600	3610	2760	2040	1430	
2CC-3.2Y	40			10510	8650	7040	5640	4440	3420	2550	1810	1200	
2CC-4.2Y	40	16470	15110	12660	10520	8660	7050	5650	4450	3420	2540	1810	
4FC-3.2Y	40			11560	9520	7740	6200	4880	3750	2790	1980	1310	

4FC-5.2Y	40	18240	16740	14026	11650	9580	7790	6240	4900	3760	2790	1970	
4EC-4.2Y	40				1440	11870	9650	7720	6070	4650	3450	2440	1590
4EC-6.2Y	40	23150	21250	17780	14750	12120	9840	7860	5160	4700	3470	2420	
4DC-5.2Y	40				17650	14520	11810	9460	7440	5720	4250	3010	1980
4DC-7.2Y	40	27500	25200	21100	14790	14350	11630	9270	7250	5510	4040	2800	
4CC-6.2Y	40				21100	17420	14200	11420	9030	6930	5240	3770	2540
4CC-9.2Y	40	32850	30150	25300	21100	17410	14210	11440	9050	7000	5250	3700	
4VCS-6.2Y	40				22750	18670	15140	12090	9470	7230	5320	3720	2380
4VCS-10.2Y	40	36100	33100	27600	22850	18680	15070	11950	9260	6960	5000	3350	
4TCS-8.2Y	40				27750	22800	18480	14760	11560	8830	3520	4580	2960
4TCS-12.2Y	40	43500	39580	33300	27550	22600	18260	14530	11320	8590	6270	4320	
4PCS-10.2Y	40				32300	26500	21500	17130	13400	10220	7520	5240	3350
4PCS-15.2Y	40	52200	47850	39950	33050	27050	21850	17360	13490	10190	7390	5020	
4NCS-12.2Y	40				37300	30600	24800	19810	15510	11840	8740	6120	3950
4NCS-20.2Y	40	60500	55400	46250	38200	31250	25200	20000	15530	11730	8510	5820	
4J-13.2Y	40				42800	35250	28700	23000	18150	14000	10470	7500	5020
4J-22.2Y	40	67100	61500	51500	42700	35100	25800	22800	17870	13670	10110	7120	
4H-15.2Y	40				49850	41150	33600	27100	21500	16730	12660	9420	6380
4H-25.2Y	40	77400	71000	59500	49400	409650	33000	26450	20800	19530	11800	8320	
4G-20.2Y	40				57200	47300	38700	31200	24800	19250	14540	10540	7160
4G-30.2Y	40	98100	81800	68600	57000	47000	38250	30700	24200	18610	13860	9850	
6J-22.2Y	40				63800	52600	42800	34350	27100	20900	15640	11210	7510
6J-33.2Y	40	101500	93000	77700	64300	52700	42600	33900	26400	20050	14640	10110	
6H-25.2Y	40				74000	61600	50200	40400	31900	24700	18590	13440	9130
6H-35.2Y	40	116300	1E+06	89300	74100	60900	49450	39600	31100	23800	17670	12480	
6G-30.2Y	40				84000	69300	56600	45500	36050	27900	21000	15130	10210
6G-40.2Y	40	133440	122400	102700	85400	70300	57300	46000	36300	28000	20900	14940	
6F-40.2Y	40				100900	83100	67600	54300	42800	32950	24600	17570	11680
6F-50.2Y	40	157900	145000	121700	101300	83600	68300	55000	43600	3850	25600	18620	
8GC-60.2Y	40	188400	173100	145400	121200	10000	81500	65400					
8FC-70.2Y	40	223000	204900	172100	143500	118400	96500	77400					



Copyright : WWW.MBSM.PRO



Copyright : WWW.MBSM.PRO



Private Picture Copyright : WWW.MBSM.PRO



Private Picture Copyright : WWW.MBSM.PRO



Private Picture Copyright : WWW.MBSM.PRO



Copyright : WWW.MBSM.PRO



Private Picture Copyright : WWW.MBSM.PRO



Copyright : WWW.MBSM.PRO

Mbsm.pro, compressor, Semi Hermétiques, Semi Hermétiques à Pistons, Bitzer, Bitzer compressors the large portfolio of products and services, Bitzer offer the right

Category: Chaud&Froid,compressor
written by www.mbsm.pro | 31 March 2023



Private Picture Copyright : WWW.MBSM.PRO

Mbsm.pro, compressor, Semi Hermétiques, Semi Hermétiques à Pistons, Bitzer, Bitzer compressors the large portfolio of products and services, Bitzer offer the right

Mbsm.pro, BITZER, Semi Hermetic, 4VES-7, R22, 7.0 Hp, 14.0 A, 32,939 btu

Category: compressor
written by www.mbsm.pro | 31 March 2023



Private Picture Copyright : WWW.MBSM.PRO

Mbsm.pro, BITZER, Semi Hermetic, 4VES-7, R22, 7.0 Hp, 14.0 A, 32,939 btu

Bitzer, Compressor, S6F-30.2Y-40P,
Compressor Selection, Semi-hermetic
Reciprocating, 1450 min⁻¹ , 101,1
(LP) , 30hp

Category: compressor

written by www.mbsm.pro | 31 March 2023



Type S6F-30.2Y-40P

S.No. 1600308267

BITZER KÜHLMASCHINENBAU GMBH
Made in Germany



Nominal Voltage V 3Ph~	Frequ. Hz	Operat. C. A (max.)	Locked Rotor C.		Displacem. m³/h	Speed RPM
			A (Y)	A (YY)		
380-420	50	51	135	220	101,4	1450
440-480	60	51	135	220	122	1750

IP 54 LP/HP max. 19 / 28 bar



BITZER is raising the bar in terms of technology and capacity for expanded low temperature applications with the 2nd generation of 2-stage compressors. This series is the result of extensive research on the basis of years of experience in the construction of highly efficient and solid reciprocating compressors. The gas flow control and working valves are specially adapted for low temperature applications.

- Displacement at 1450 min⁻¹ : 101,1 (LP) 50,5 (HP)
- Number of cylinders : 6
- Oilcharge : 4,75 dm³

Displacement (1450 RPM 50Hz):101.10 / 50.50 m³/h Displacement (1750 RPM 60Hz):122.02 / 60.95 m³/h

The Bitzer Compressor is high quality!

Displacement (1450 RPM 50Hz):101.10 / 50.50 m³/h

Displacement (1750 RPM 60Hz):122.02 / 60.95 m³/h

No. of cylinder x bore LP/HP x stroke:6+6 x 82/ 82 mm x 55 mm

Max. pressure (LP/MP/HP):19 / 19 / 28 bar

Connection suction line:42 mm – 1 5/8 inch

Connection discharge line:35 mm – 1 3/8 inch

Oil type R404A/R507A:BSE32 (Standard)

Oil type R448A/R449A:BSE32 (Standard)

Oil type R22:B5.2 (Option) We can also provide the following models

4JTE-15K

GYD80485VAYB4

GED60235VLB332

GMD60137VBYR632

GED60485VBYR3-1

CSH7573-70Y-40P

GYD80182VLYB632

GYD60385VLYR2-2

GED80154VLR332

GYU80295VLR4-2

GSU60120VLB6-2

GED60137VAYB3-1

GUU60154VLR532

GUD80295VLR232

GSD80295VLR6-1

GTU60137VLYB3-1

GUD60137VBYR5-1

GYD80235VBYB332

GYD60421VAYR332

GMD60295VBR3-1

GED80154VBYB6

4NEH-14-40S

GMU60154VLY

GYD60154VAB4-2

GYD80182VAYR4-2

GYD80421VBR5-1

GYD60385VLYR4-1

4TE-9.F3Y-40S

GMD60182VBYB3-2

GMD80120VLR232
 GUD60120VBYR5-2
 GSD60154VAYR232
 GMD60154VBYR632
 44EES-12-40S
 GMD60154VBB432
 GUD80421VWR4-2
 GYD80385VAYR2-2
 GTD60385VLB632
 GED60235VLB2
 GED60154VAYR4
 GSD80421VWR5-2
 GUD60421VBR5
 GYD80182VBYB5-1
 GED60295VBB5
 GED80421VAR4-1
 GED60385VLYB3
 GYU80421VLR2
 GSD80485VBB5-1
 GED60120VLB2
 GUD60421VBR332
 GTD60154VAB4-2
 GED60421VAYB6-1
 GMD60485VBB5-1
 GSD60485VAYR4
 GED80295VLYR6-1
 GSD60235VAYB232
 GTD60385VBYR3-1
 GUD60154VBB3-2
 GUD80295VWB6-2
 GED60421VAR5
 GMD80421VBR4
 GED80182VLR532
 GSD60154VBYB6-1
 GTD80421VBYR332
 GSD60182VAYB4-1
 GUD80485VWYR5-2
 GSU80295VLYR6-1
 GSD80182VLYR2-2
 GSU80385VLB432
 GED80295VAY
 GED80295VAB3-2
 GYD60120VAR4

With liquid subcooling 50Hz (R404A/R507A)

Compressor type	Cond. temp. [°C]	Q _o / P _e	Evaporating temperature °C									
			-25	-30	-35	-40	-45	-50	-55	-60	-65	-70
S6F-30.2Y	30	Q _o	43400	37400	31750	26500	21700	17420	13690	10540	7920	5800

Pe	2,53	0,65	8,78	16,94	15,15	13,42	11,77	10,20	8,74	7,40	
35	Qo	42500	36600	31050	25900	21200	17030	13420	10340	7780	5680
Pe	3,85	1,86	9,89	7,94	6,04	4,21	12,45	10,78	9,23	7,80	
40	Qo	41500	35700	30300	25300	20700	16680	13170	10150	7590	
Pe	25,20	23,10	21,01	18,96	16,95	15,00	13,14	11,37	9,72		
45	Qo	40450	34800	29550	24700	20300	1660	12930	9920		
Pe	26,59	24,37	22,16	19,98	17,86	15,80	13,83	11,96			
50	Qo	39500	34000	28850	24100	19870	16060	12650			
Pe	28,07	25,69	23,33	21,01	18,75	6,57	14,49				
55	Qo	38800	33250	28200	23600	19490	15740				
Pe	29,64	27,06	24,51	22,03	19,63	17,32					

Qo – Cooling capacity [Watt], Pe – Power consumption [kW]

Without liquid subcooling 50Hz (R404A/R507A)

Compressor type	Cond. temp. [°C]	Qo / Pe		Evaporating temperature °C								
		-25	-30	-35	-40	-45	-50	-55	-60	-65	-70	
S6F-30.2Y	30	Qo	38050	31700	26050	21000	16620	12880	9790	7280	5300	3760
Pe	1,26	18,81	16,61	14,64	12,90	11,37	10,02	8,86	7,85	7,00		
35	Qo	36000	29950	24500	19710	15570	12070	9180	6840	4980	3510	
Pe	22,11	19,66	17,41	15,37	13,53	11,88	10,42	9,13	8,02	5,72		
40	Qo	33800	28000	22900	18390	14530	11280	8590	6400	4620		
Pe	22,95	20,53	18,26	16,15	14,20	12,42	10,82	9,41	8,18			
45	Qo	31450	26050	21250	17080	13510	10500	8000	5920			
Pe	23,82	21,42	19,12	16,94	14,89	13,00	11,26	9,71				
50	Qo	28950	24000	19590	15770	12490	9710	7370				
Pe	24,72	22,31	19,98	17,74	15,61	13,61	11,76					
55	Qo	26400	21900	17890	14430	11440	8880					
Pe	25,67	23,19	20,80	18,52	16,34	14,27						

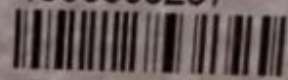
Qo – Cooling capacity [Watt], Pe – Power consumption [kW]



Type S6F-30.2Y-40P

S.No. 1600308267

BITZER KÜHLMASCHINENBAU GMBH
Made in Germany



Nominal Voltage V 3Ph~	Frequ. Hz	Operat. C. A (max.)	Locked Rotor C.		Displacem. m³/h	Speed RPM
			A (Y)	A (YY)		
380-420	50	51	135	220	101,4	1450
440-480	60	51	135	220	122	1750

IP 54 LP/HP max. 19 / 28 bar





Private Picture Copyright : WWW.MBSM.PRO

Mbsm_dot_pro_private_PDF_S6F-30.2Y-40PTélécharger

Compressor type Displacement at 1450 min-1 Number of cylinders Oil charge Weight Pipe connections Motor Max. operating current Max. power consumption Starting

current(lockedrotor)LPHPDLSLdm3KgmpoucempouceAmpkWAmper .
Y/YYS6F-30.2Y101,150,567.752343513/842
5415/8
21/8380 ..420YY/3/50
440 ..480 YY/3/605131,9135/220

3HP , 2CC-3.2 , Bitzer ,Semi hermetic ,Refrigeration ,Compressor ,for cold storage

Category: Technologie,Tester ok
written by www.mbsm.pro | 31 March 2023



Private Picture Copyright: WWW.MBSM.PRO

3HP , 2CC-3.2 , Bitzer ,Semi hermetic ,Refrigeration ,Compressor ,for cold storage