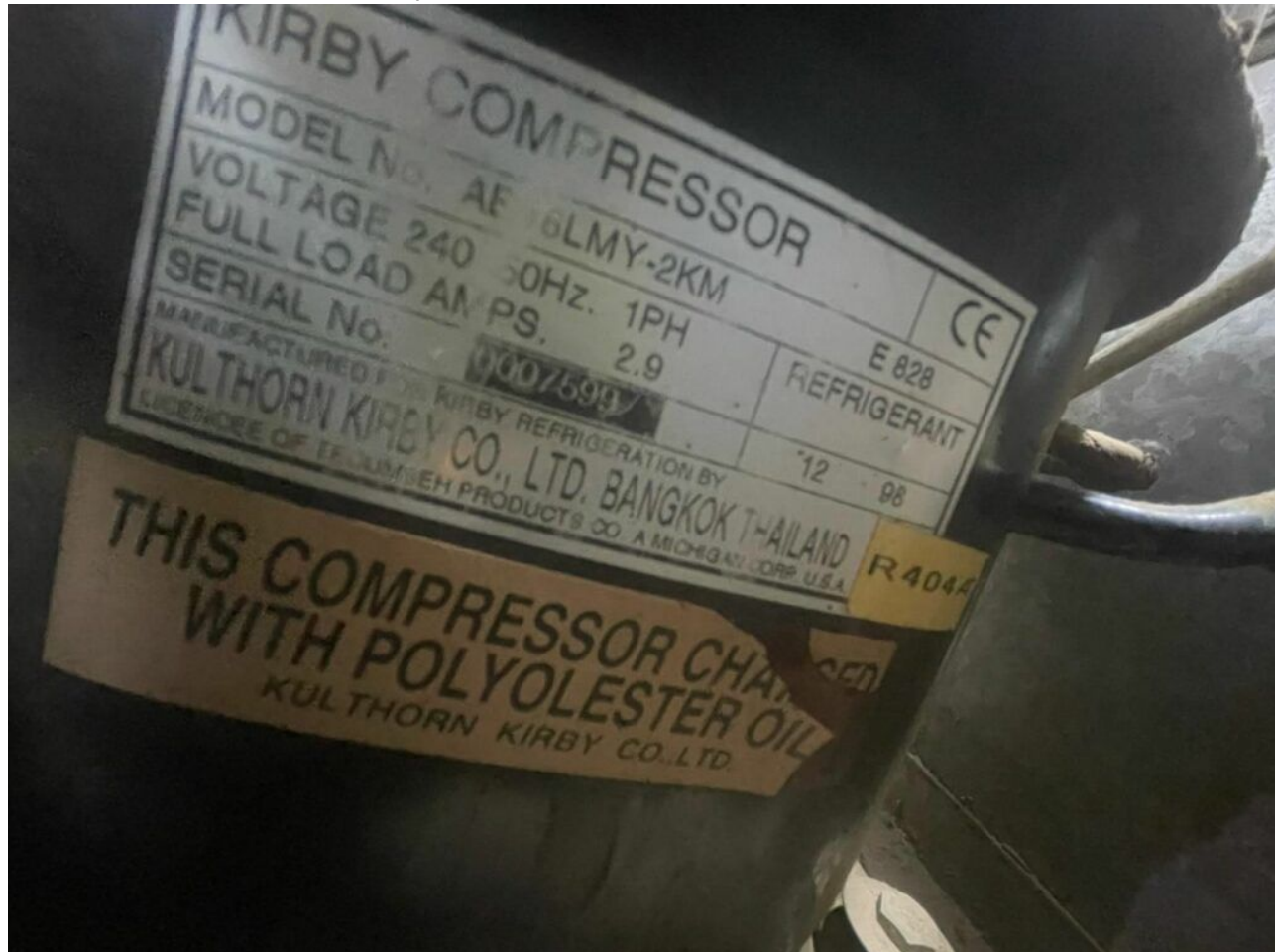


Mbsm.pro, compressor, AE16LMY, 3/8 hp, R134a, HBP, 17.4 cc, 5/8 hp, R404, LBP, 14.5 cc.

Category: compressor

written by www.mbsm.pro | 22 March 2025



Private Picture Copyright : WWW.MBSM.PRO

Mbsm.pro compressor AE16LMY: 3/8 hp, R134a, HBP, 17.4 cc; 5/8 hp, R404, LBP, 14.5 cc.

---

Mbsm.pro, Compressor, Panasonic, Gp21tb, Gp21fb, 5/8 hp, 415 kcal, 351 w (cap/cool), ELECTROLUX, HERMETIC, R134a, LBP, 220-240/1/50

Category: compressor

written by www.mbsm.pro | 22 March 2025



Electrolux



ubigel

ELECTROLUX HERMETIC COMPRESSORS - R134a LBP  
VOLTAGE 220-240/1/50

Code	Model	Nom. hp	Displacem. cc	Expansion	Ashrae -23,3C° kcal/h	Cecomaf -25C° W
CMP100AC	GD24AA	1/20	2,44	C	41	34
CMP101AC	GD30AA	1/12	3,08	C	62	52
CMP102AC	GD36AA	1/12	3,62	C	72	61
CMP103AC	GD40AA	1/10	4,03	C	82	70
CMP104AC	AS45AA	1/8	4,56	C/V	112	82
CMP105AC	AS60AA	1/6	5,99	C/V	154	114
CMP106AC	AS75AA	1/5	6,64	C/V	176	129
CMP107AC	AS80AA	1/5	7,39	C/V	198	145
CMP108AC	GL45AA	1/8	4,55	C	96	81
CMP109AC	GL50AA	1/7	5,12	C	107	91
CMP110AC	GL60AA	1/6	5,99	C	126	107
CMP111AC	GL70AA	1/5	6,65	C	142	121
CMP112AC	GL75AA	1/5	7,39	C	155	132
CMP113AC	GL80AA	1/5	8,10	C	170	144
CMP114AC	GL90AA	1/5	9,08	C	193	165
CMP115AC	GL99AA	1/4	9,93	C	205	175
CMP116AC	GP12FB	1/3	12,00	C/V	225	190
CMP117AC	GP14FB	3/8	14,00	C/V	270	228
CMP118AC	GP16FB	3/8	16,14	C/V	315	266
CMP119AC	GP18FB	3/7	18,40	C/V	345	291
CMP120AC	GP21FB	2/3	20,72	C/V	415	351
CMP121AC	GVY35AA	1/10	3,36	C/V	84	62
CMP122AC	GVY40AA	1/9	3,87	C/V	107	79
CMP123AC	GVY44AA	1/8	4,38	C/V	122	91
CMP124AC	GVY57AA	1/7	5,73	C/V	150	109
CMP125AC	GVY66AA	1/5	7,00	C/V	181	132
CMP126AC	GVY75AA	1/5	7,52	C/V	205	150
CMP127AC	GQY35AA	1/10	3,66	C/V	91	67
CMP128AC	GQY40AA	1/9	4,01	C/V	104	76
CMP129AC	GQY45AA	1/8	4,56	C/V	121	90

Mbsm.pro, Compressor, Panasonic, Gp21tp, 5/8 hp, 415 kcal, 351 w (cap/cool), ELECTROLUX, HERMETIC, COMPRESSORS, R134a, LBP, 220-240/1/50

Mbsm.pro, Compressor, hy131y, 1/2 hp, 5/8 hp , LBP, 380 w, R134A, Freezer Compressor, 13.1 cm3, 1297 Btu/hr, 327 Kcal/hr, HUAYI, Refrigeration Compressor

Category: compressor

written by www.mbsm.pro | 22 March 2025



Private Picture Copyright : [WWW.MBSM.PRO](http://WWW.MBSM.PRO)

Mbsm.pro, Compressor, hy131y, 1/2 hp, 5/8 hp , LBP, 380 w, R134A, Freezer Compressor, 13.1 cm<sup>3</sup>, 1297 Btu/hr, 327 Kcal/hr

Mbsm.pro, AE2425Z-FZ3C ,  
compressor, Tecumseh, R404A, 5/8 HP,  
Ira 19 A,

Category: compressor

written by [www.mbsm.pro](http://www.mbsm.pro) | 22 March 2025



Private Picture Copyright : [WWW.MBSM.PRO](http://WWW.MBSM.PRO)

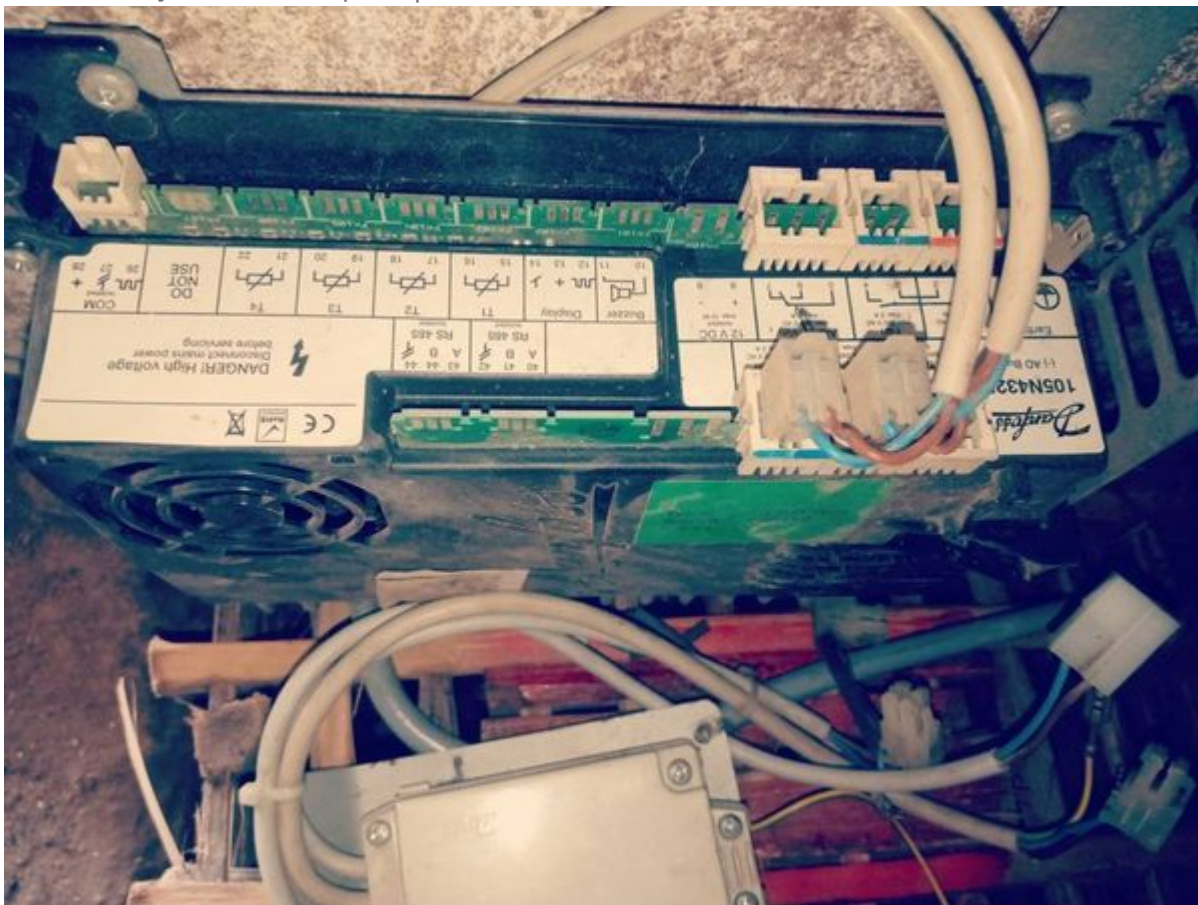
Mbsm.pro, AE2425Z-FZ3C , compressor, Tecumseh, R404A, 5/8 HP

---

Mbsm.pro, Compressor, Secop, Danfoss, 5/8 Hp, LBP, INVERTER, Variable speed LBP, SLV15CNK, SLV15CNK.2, 104H8568, 104H8541, R290, 230V, refrigeration, Deep freezer AHT Australian, Capillary 3m/ 031

Category: compressor

written by www.mbsm.pro | 22 March 2025



Private Picture Copyright: WWW.MBSM.PRO

Mbsm.pro, Compressor, Secop, Danfoss, 5/8 Hp, LBP, INVERTER, Variable speed LBP, SLV15CNK, SLV15CNK.2, 104H8568, 104H8541, R290, 230V, refrigeration

---

Mbsm.pro, Compressor, R290, 0.110Kg, SC15CNX.2, Secop, DANFOSS, SC15CNX, 15,28cm<sup>3</sup>, LBP, 230V, Hermetic piston

# compressors, 5/8 Hp, 104h 8568, 104h8568

Category: compressor

written by [www.mbsm.pro](http://www.mbsm.pro) | 22 March 2025



Private Picture Copyright: [WWW.MBSM.PRO](http://WWW.MBSM.PRO)

Mbsm.pro, Compressor, R290, 0.110Kg, SC15CNX, 15,28cm<sup>3</sup>, LBP, 230V, Hermetic piston compressors, 5/8 Hp, 104h 8568, 104h8568

# Tecumseh, Compressor, 5/8HP, HMBP – R404A , R448A , R449A, MBP, CAJ9480Z, 230V

Category: compressor

written by [www.mbsm.pro](http://www.mbsm.pro) | 22 March 2025



Private Picture Copyright : [WWW.MBSM.PRO](http://WWW.MBSM.PRO)

## Caractéristiques techniques

- Marque : TECUMSEH UNITÉ HERMÉTIQUE
- Modèle : CAJ9480Z-R
- CYLINDRÉE (CM<sup>3</sup>)15,2
- FLUIDER404A , R448A , R449A
- APPLICATIONHMBP
- PLAGÉ D'APPLICATION-25/+15
- PUISSANCE (W)1159
- PUISSANCE FRIGORIFIQUE (TK+40°C)15/3350 5/2355 -10/1294 -25/609
- TENSION (V)240/1/50
- DÉMARRAGECSR
- I.MAX (A)6,7
- Ø ASPIRATION1/2
- Ø REFOULEMENT5/16
- DIMENSIONS (MM)235x178x280
- Gaz: **R-404a**
- Température/Pression: **Haute Pression**
- Puissance: **5/8 HP**

- Voltage: **230 V**
- Type De Courant: **Monophasé**
- Fréquence: **50 Hz**
- Type De Compresseur: **Hermétique**
- Décalage: **15.2 cm<sup>3</sup>**
- Cons.Énergie -25°C: **496 W**
- Cons.Énergie -10°C: **669 W**
- Cons.Énergie -5°C: **718 W**
- Cons.Énergie 0°C: **762 W**
- Cons.Énergie +5°C: **798 W**
- Cons.Énergie +10°C: **828 W**
- T° De Condensation: **40 °C**
- Capacité Frigorifique -25°C: **524 Kcal/h**
- Capacité Frigorifique -20°C: **692 Kcal/h**
- Capacité Frigorifique -15°C: **887 Kcal/h**
- Capacité Frigorifique -10°C: **1113 Kcal/h**
- Capacité Frigorifique -5°C: **1374 Kcal/h**
- Capacité Frigorifique 0°C: **1677 Kcal/h**
- Capacité Frigorifique 5°C: **2025 Kcal/h**
- Capacité Frigorifique 10°C: **2425 Kcal/h**
- Tipo Test: **EN.12900**

Compresseur L'unité Hermetique – Tecumseh CAJ9480Z – R404A, R449A, R407A, R452A  
220 – 240V 1~ 50 Hz

Cylindrée = 15.2 CM3

APPLICATIONS = HBP / MHBP

Moteur type: CSR





Private Picture Copyright : [WWW.MBSM.PRO](http://WWW.MBSM.PRO)



Private Picture Copyright : [WWW.MBSM.PRO](http://WWW.MBSM.PRO)



Private Picture Copyright : [WWW.MBSM.PRO](http://WWW.MBSM.PRO)



Private Picture Copyright : [WWW.MBSM.PRO](http://WWW.MBSM.PRO)





● ○ REDMI NOTE 9 PRO  
∞ AI QUAD CAMERA

Private Picture Copyright : [WWW.MBSM.PRO](http://WWW.MBSM.PRO)



● ○ REDMI NOTE 9 PRO  
∞ AI QUAD CAMERA

Private Picture Copyright : [WWW.MBSM.PRO](http://WWW.MBSM.PRO)



● ○ REDMI NOTE 9 PRO  
∞ AI QUAD CAMERA

Private Picture Copyright : [WWW.MBSM.PRO](http://WWW.MBSM.PRO)

Mbsm\_dot\_pro\_private\_PDF\_caj9480Z\_2494-specetélécharger

Compresseur AJ = Le produit de référence associant silence, fiabilité et

efficacité du froid commercial.

Product Code	Model Number	Compressor Horsepower	Compressor Displacement	Cooling Oil Charge
	CAJ9480Z-FZ	5/8 HP	15.2 cm3/rev	Fan 475 ml
	CAJ9510Z-FZ	1 HP	18.3 cm3/rev	Fan 475 ml
	CAJ9513Z-FZ	1 1/8 HP	24.2 cm3/rev	Fan 475 ml
	CAJ4517Z-FZ	1.25 HP	25.95 cm3/rev	Fan 475 ml
	TAJ4517Z-TZ	1.25 HP	25.95 cm3/rev	Fan 475 ml
	CAJ4519Z-FZ	1.5 HP	34.45 cm3/rev	Fan 475 ml
	TAJ4519Z-TZ	1.5 HP	34.45 cm3/rev	Fan 475 ml

---

## Mbsm.pro , Compressor ESC 8.5, R134a, Necchi (530591) , 1/5 Hp ,159 w

Category: Solutions,Tester ok  
written by Jamila | 22 March 2025



PictureS Mbsm Dot Pro : [www.mbsm.pro](http://www.mbsm.pro)

Mbsm.pro , Compressor ESC 8.5, R134a, Necchi (530591) , 1/5 Hp ,159 w

	Motore	cm <sup>3</sup>	Volt	Watt -10°C	Watt -30°C	
RIB5150	A9EV – R22 – 3/8 – LBP	CSR	9,29	220	642	
RIB5160	A11EV – R22 – 1/2 Hp – LBP	CSR	11,11	220	781	
RIB5350	A13EV – R22 – 5/8 Hp – LBP	CSR	13,35	220	967	
RIB5450	N17EV – R22 – 3/4 Hp – LBP	CSR	17,52	220	1221	
RIB5550	N21EV – R22 -1- Hp LBP	CSR	20,68	220	1464	
RIB5650	N23EV – R22 – 1,2 Hp – LBP	CSR	23,18	230	1616	
RIB7104	NB4 COMPRESS. R12 24V. FRAMEC 1/8 =					
RIB7108	NB8 COMPRESS. R12 24V.FRAMEC 175w.=					
RIB7113	NB13HP COMPRESS.R12 24V.FRAMEC 1/3=					
RIBB010	ETR 3 – R134A – 1/12 Hp – LBP	RSIR	3,00	220	127	
RIBB020	ETR 3,5 HP 1/10 R134A – LBP	RSIR	3,50	220	156	
RIBB030	ETR 4 HP 1/8 R134A – LBP	RSIR	4,10	220	179	
RIBB040	ETR 5 – R134a – HP 1/6 – LBP	RSIR	5,12	220	231	
RIBB050	ETR5,5 – R134a – 1/6 Hp – LBP	RSIR	5,55	220	257	
RIBB080	ESC5 – R134a – 1/6 Hp – LBP	RSIR	5,12	220	222	
RIBB100	ESC7 – R134a – 1/5 Hp – LBP	RSIR	7,00	220	307	
RIBB110	ESC8 – R134a – 1/5 Hp – LBP	RSIR	7,75	220	358	
RIBB130	ESC9 – R134a – 1/4 Hp – LBP	RSIR	9,07	220	424	
RIBB140	ESC11 – R134a – 1/3 Hp – LBP	RSIR	10,63	220	501	
RIBB200	ESC4H – R134a – 1/8 Hp – LBP	RSIR	4,10	220	177	
RIBB400	ESR 7 – R134a – 1/5 Hp – LBP	RSIR	7,00	220	307	
RIBB410	ESR 8 – R134a – 1/5 Hp – LBP	RSIR	7,75	220	358	
RIBB430	ESR 9 – R134a – 1/4 Hp – LBP	RSIR	9,07	220	424	
RIBB440	ESR11 – R134a – 1/3 Hp – LBP	RSIR	10,63	220	501	
RIBE040	TN17EV – R404 – 3/4 Hp – LBP	CSR	17,52	220		565
RIBE050	TN21EV – R404 – 1 Hp – LBP	CSR	20,68	220		644
RIBE060	TN23EV – R404 – 1,2 Hp – LBP	CSR	23,18	220		726
RIBT999	COMPRESSORE ELECTROLUX DESCR.BOLLA					



neue Type	Vordichter Type	Kältemittel	Bereich	1)Betrieb	2)Leistungs-aufnahme Watt	3)Strom-aufnahme A	Öl-füllung cm <sup>3</sup>	Bestell-Nr.
<b>mit Esterölfüllung</b>								
*ETR 3	—	R134a	LBP	K	68	0,55	185	*230.051
*ETR 3,5	—	R134a	LBP	K	81	0,58	185	*230.053
*ETR 4	—	R134a	LBP	K	89	0,64	185	*230.055
*ETR 5	—	R134a	LBP	K	109	0,76	185	*230.057
*ETR 5,5	—	R134a	LBP	K	118	0,80	185	*230.059
*ESR 7	ESC 7	R134a	LBP	K	127	0,83	220	*230.073
*ESR 8	ESC 8	R134a	LBP	K	149	1,00	220	*230.075
*ESR 8,5	ESC 8,5	R134a	LBP	K	159	1,07	220	*230.077
*ESR 9	ESC 9	R134a	LBP	K	177	1,20	220	*230.079
*ESR 11	ESC 11	R134a	LBP	K	215	1,42	220	*230.081
ETR 4H	ES(C)R4H	R134a	HBP	K	187	1,13	185	—
ETR 5H	ES(C)R5H	R134a	HBP	K	231	1,30	185	—
ESR 7H	ESC 7H	R134a	HBP	K	288	1,61	220	—
ESR 9H	ESC 9H	R134a	HBP	K	396	2,31	220	—
ESR 11H	ESC 11H	R134a	HBP	K	472	2,64	220	—
TA 13 EV	—	R404 A	LBP	K/E	463	2,15	950	230.096
TN 17 EV	—	R404 A	LBP	K/E	627	2,93	950	230.097
TN 21 EV	—	R404 A	LBP	K/E	727	3,61	950	230.099

PictureS Mbsm Dot Pro : [www.mbsm.pro](http://www.mbsm.pro)

# mbsm.pro , CUBIGEL Compressor GX21TB, 220-240 VOLTS, 5/8 HP , R134a

Category: Solutions, Tester ok  
written by Jamila | 22 March 2025



**GX21TB VE01**  
**220-240V 50Hz ~1**

#### COMPRESSOR

Displacement (cm <sup>3</sup> )	20.72
Diameter (mm)	34.93
Stroke (mm)	21.62
Net Weight (Kg)	17
Oil type	ISO VG 46 ESTER
Oil charge (cm <sup>3</sup> )	500

#### MOTOR

Approximate Power (CV)	5/8
Voltage/Frequency (V/Hz)	220V 50Hz
Voltage range (V)	187-264
Code	82.197
Type	CSIR
Phase number	1 PH
Locked rotor current (A)	26.0
Main W. resist. at 25°C (Ω)	2.45
Start W. resist. at 25°C (Ω)	25.9

#### APPLICATION

Application	High/Mid. back pressure
Refrigerant	R134a
Evaporating (°C)	-25 to 10
Expansion	Capillar/Valve
Comp. cooling	Fan cooled
Max. ambient temp. (°C)	43

#### NOMINAL PERFORMANCE

	CYCLE C	CYCLE D
Cooling capacity (W)	1550	1855
Input power (W)	818	850
EER (kcal/Wh)	1.62	1.87
COP (W/W)	1.89	2.18
Current (A)	5.16	5.29

#### TEST CONDITIONS

Evaporating temp. (°C)	5.0	7.2
Condensing temp. (°C)	55.0	55.0
Liq.t. entering expan. (°C)	55.0	46.0
Ambient t. and return (°C)	32.0	35.0
Tens/Freq (V/Hz)	220V 50Hz	220V 50Hz

#### ELECTRICAL COMPONENTS

Relay	9660 A 180	MTRP 16
Pick-Up (A)	16.70	16.70
Drop-Out (A)	14.00	14.00
Protector	MRA38128	T0535/G.
Current (A)	17.0	17.0
Time check (seg)	7.5-14	7.5-14
Disc temp. (Open/Close) (°C)	105.0 / 52.0	105.0 / 52.0

PictureS Mbsm Dot Pro : [www.mbsm.pro](http://www.mbsm.pro)

mbsm.pro , CUBIGEL Compressor GX21TB, 220-240 VOLTS, 5/8 HP , R134a