

# VMU1113Y Compressor 1/5 HP LBP Freezing R600a 230V 150W Cooling Capacity Technical Specs Replacement Models Expert Guide

Category: Refrigeration

written by [www.mbsm.pro](http://www.mbsm.pro) | 11 February 2026



Private Picture Copyright : [WWW.MBSM.PRO](http://WWW.MBSM.PRO)

The VMU1113Y compressor isn't just another box on a shelf. It's the unsung hero in small-scale freezing systems—think under-counter freezers, ice makers, or

compact commercial display cases where reliability at sub-zero temps matters. Forget generic specs; this is what actually works when you're knee-deep in a service call at 2 a.m.

---

# Mbsm.pro, Compressor, THB1360YNS, Tecumseh, hermetic compressor, Thb1360y, R-134a, 1/5 hp, 230v, lbp

Category: compressor

written by [www.mbsm.pro](http://www.mbsm.pro) | 11 February 2026



Mbsm.pro, Compressor, THB1360YNS, Tecumseh, hermetic compressor, Thb1360y, R-134a, 1/5 hp, 230v, lbp

---

# Mbsm.pro, Compressor, AE4430Z, R-404a, 1/4 HP , 230V, hbp

Category: compressor

written by [www.mbsm.pro](http://www.mbsm.pro) | 11 February 2026



Private Picture Copyright : [WWW.MBSM.PRO](http://WWW.MBSM.PRO)

Mbsm.pro, Compressor, AE4430Z, R-404a, 1/4 HP , 230V, hbp

---

# Mbsm.pro, SECOP, DANFOSS, FR6G, compressor 103G 6660, 1/6 hp++, 1/5 hp-, 50Hz, R134a, LBP/HBP, 230V,

Category: compressor

written by [www.mbsm.pro](http://www.mbsm.pro) | 11 February 2026



Private Picture Copyright : [WWW.MBSM.PRO](http://WWW.MBSM.PRO)

Mbsm.pro, SECOP, DANFOSS, FR6G, compressor 103G 6660, 1/6 hp++, 1/5 hp-, 50Hz, R134a, LBP/HBP, 230V,

# Mbsm.pro, Compressor, 1HP, 1 PH, R404A, CAJ2446Z, AJ27MIGF704, 26,2cm<sup>3</sup>, LBP, 230V

Category: compressor

written by www.mbsm.pro | 11 February 2026

R404A

THB2360Z	3.6	CSR	71	97	129	169	217	275	104	0.68	6.35 - 1/4"	4.76 - 3/16"	6.35 - 1/4"	XA, F2", G2	7	172	THB2360Z	*ASERCOM Certified
THB2378Z	4.2	CSR	82	112	149	195	251	318	136	0.60	6.35 - 1/4"	4.76 - 3/16"	6.35 - 1/4"	XA, F2", G2	8	172	THB2378Z	*ASERCOM Certified
THB2396Z	5.2	CSR	108	145	191	247	315	395	157	0.69	6.35 - 1/4"	4.76 - 3/16"	6.35 - 1/4"	FZ	8.3	172	THB2396Z	*ASERCOM Certified
AE2410Z	5.02	CSR	99	142	195	259	336	427	156	0.63	6.35 - 1/4"	4.76 - 3/16"	6.35 - 1/4"	F2", AA, GS	9.9	210	AE2410Z	*ASERCOM Certified
AE2415Z	7.33	CSR	160	220	293	382	489	617	206	0.78	6.35 - 1/4"	4.76 - 3/16"	6.35 - 1/4"	F2", AA, GS	10	210	AE2415Z	*ASERCOM Certified
AE2420Z	9.35	CSR	202	280	377	494	636	805	252	0.80	9.5 - 3/8"	6.35 - 1/4"	6.35 - 1/4"	F2", AA, GS	10.1	210	AE2420Z	*ASERCOM Certified
AE2425Z	12.01	CSR	271	372	496	644	821	1032	323	0.84	9.5 - 3/8"	6.35 - 1/4"	6.35 - 1/4"	F2", AA, ES, FS	10.1	210	AE2425Z	*ASERCOM Certified
CAU/TAJ2428Z	15.2	CSR / TRI	252	367	511	689	906	1189	368	0.68	12.7 - 1/2"	6.35 - 1/4"	6.35 - 1/4"	XA, F2", G2, T2	20	268	CAU/TAJ2428Z	*ASERCOM Certified
CAU/TAJ2432Z	18.3	CSR / TRI	313	458	640	865	1140	1470	417	0.75	12.7 - 1/2"	7.9 - 5/16"	6.35 - 1/4"	XA, F2", G2, T2	21	268	CAU/TAJ2432Z	*ASERCOM Certified
CAJ2440Z	21	CSR	380	547	755	1011	1322	1695	499	0.76	12.7 - 1/2"	7.9 - 5/16"	6.35 - 1/4"	FZ	22	280	CAJ2440Z	*ASERCOM Certified
CAU/TAJ2466Z	26.2	CSR / TRI	515	726	982	1292	1663	2102	604	0.85	12.7 - 1/2"	7.9 - 5/16"	6.35 - 1/4"	XA, F2", G2, K2, T2	22	280	CAU/TAJ2466Z	*ASERCOM Certified
CAU/TAJ2464Z	34.5	CSR / TRI	681	943	1266	1660	2135	2704	885	0.81	15.9 - 5/8"	9.5 - 3/8"	6.35 - 1/4"	XA, F2", G2, K2, T2	23	280	CAU/TAJ2464Z	*ASERCOM Certified
PH/TFH2480Z	53.2	CSR / TRI	924	1340	1831	2405	3075	3851	1102	0.84	15.9 - 5/8"	12.7 - 1/2"	7.9 - 5/16"	F2", G2, K2, T2	32	354	PH/TFH2480Z	*ASERCOM Certified
PH/TFH2511Z	74.2	CSR / TRI	1224	1794	2504	3176	4433	5697	1388	0.88	15.9 - 5/8"	12.7 - 1/2"	7.9 - 5/16"	F2", G2, K2, T2	32	370	PH/TFH2511Z	*ASERCOM Certified
TFH02516Z	106.4	TRI	1848	2680	3662	4830	6150	7702	2204	0.84	22.2 - 7/8"	15.9 - 5/8"	7.9 - 5/16"	TZ	79	405	TFH02516Z	*ASERCOM Certified
TFH02522Z	148.4	TRI	2448	3588	5008	6752	8666	11084	2776	0.88	28.6 - 1 1/8"	15.9 - 5/8"	7.9 - 5/16"	TZ, K2	80	405	TFH02522Z	*ASERCOM Certified
TFH1R2534Z	159.6	TRI	2772	4020	5493	7215	9225	11553	3106	0.84	22.2 - 7/8"	19 - 3/4"	7.9 - 5/16"	TZ	147	794	TFH1R2534Z	*ASERCOM Certified
TFH1R2533Z	222.6	TRI	3672	5382	7512	10128	13299	17091	4164	0.88	28.6 - 1 1/8"	19 - 3/4"	7.9 - 5/16"	TZ	148	794	TFH1R2533Z	*ASERCOM Certified
TAG2513Z	100.7	TRI	1260	1991	2910	4083	5517	7261	1611	0.77	22.2 - 7/8"	15.9 - 5/8"	6.35 - 1/4"	TZ	44	368	TAG2513Z	*ASERCOM Certified
TAG2516Z	112.5	TRI	1923	2860	3652	4917	6473	8338	2106	0.91	22.2 - 7/8"	15.9 - 5/8"	6.35 - 1/4"	K2, T2	44	368	TAG2516Z	*ASERCOM Certified
TAG2522Z	135	TRI	2206	3203	4454	6008	7917	10239	2389	0.92	28.6 - 1 1/8"	15.9 - 5/8"	6.35 - 1/4"	K2, T2	47	393	TAG2522Z	*ASERCOM Certified
TAG2523Z	145	TRI	2475	3572	4913	6539	8490	10815	2659	0.93	28.6 - 1 1/8"	15.9 - 5/8"	6.35 - 1/4"	TZ	47	393	TAG2523Z	*ASERCOM Certified
TAG02532Z	225	TRI	3846	5320	7304	9834	12946	16676	4212	0.91	22.2 - 7/8"	15.9 - 5/8"	6.35 - 1/4"	TZ, K2	104	560	TAG02532Z	*ASERCOM Certified
TAG02544Z	270	TRI	4412	6406	8908	12016	15834	20478	4778	0.92	22.2 - 7/8"	15.9 - 5/8"	6.35 - 1/4"	TZ, K2	104	560	TAG02544Z	*ASERCOM Certified
TAG1R2548Z	373.5	TRI	5769	7980	10956	14751	19439	25014	6318	0.91	34.9 - 1 3/8"	22.2 - 7/8"	6.35 - 1/4"	TZ	183	820	TAG1R2548Z	*ASERCOM Certified
TAG1R2566Z	405	TRI	6658	9609	13362	18024	23751	30717	7167	0.92	34.9 - 1 3/8"	22.2 - 7/8"	6.35 - 1/4"	TZ	183	820	TAG1R2566Z	*ASERCOM Certified

Private Picture Copyright : WWW.MBSM.PRO

Mbsm.pro, Compressor, 1HP, 1 PH, R404A, CAJ2446Z, AJ27MIGF704, 26,2cm<sup>3</sup>, LBP, 230V

# Mbsm.pro, compressor, nly12ng, 1/2 hp-, 3/8 hp++, r290, 12,55cm<sup>3</sup>, LBP, 230V, Secop, Danfoss, CUBIGEL

Category: compressor

written by www.mbsm.pro | 11 February 2026



2022/8/12 16:09

Private Picture Copyright : WWW.MBSM.PRO

Mbsm.pro, compressor, nly12ng, 1/2 hp-, 3/8 hp++, r290, 12,55cm<sup>3</sup>, LBP, 230V, Secop, Danfoss

---

Mbsm.pro, SWZ12, 000DK02D, 2eDM02000, Intercold, Freezer, swz1/170, 222 w, 230v, Compressor, 1/4 hp, R134a, 210 G, 290 L, Intercold horizontal freezers for frozen

Category: Archivation,compressor,Freezer  
written by www.mbsm.pro | 11 February 2026



Private Picture Copyright: [WWW.MBSM.PRO](http://WWW.MBSM.PRO)

Mbsm.pro, SWZ12, 000DK02D, 2eDM02000, Intercold, Freezer, swz1/170, 222 w, 230v, Compressor, 1/4 hp, R134a, 210 G, 290 L, Intercold horizontal freezers for frozen

---

Mbsm.pro, Compressor, DAEW00  
Compressor, Zed7003-9009H, NW108LHG4,  
R-134a, 1/2HP, 230V, Lbp, Single-  
Phase, Lra 11.7, 391 W, 336 Kcal/h,  
1333 BTU/h, CSIR

Category: Archivation,compressor  
written by www.mbsm.pro | 11 February 2026



Private Picture Copyright : [WWW.MBSM.PRO](http://WWW.MBSM.PRO)

Mbsm.pro, Compressor, DAEWOO Compressor, Zed7003-9009H, NW108LHG4, R-134a, 1/2HP, 230V, Lbp, Single-Phase, Lra 11.7, 391 W, 336 Kcal/h, 1333 BTU/h, CSIR

---

## Mbsm.pro, Compressor, NE2130Z, R-134a, 1/3HP, 230V, Embraco, LBP

Category: air conditioner

written by [www.mbsm.pro](http://www.mbsm.pro) | 11 February 2026



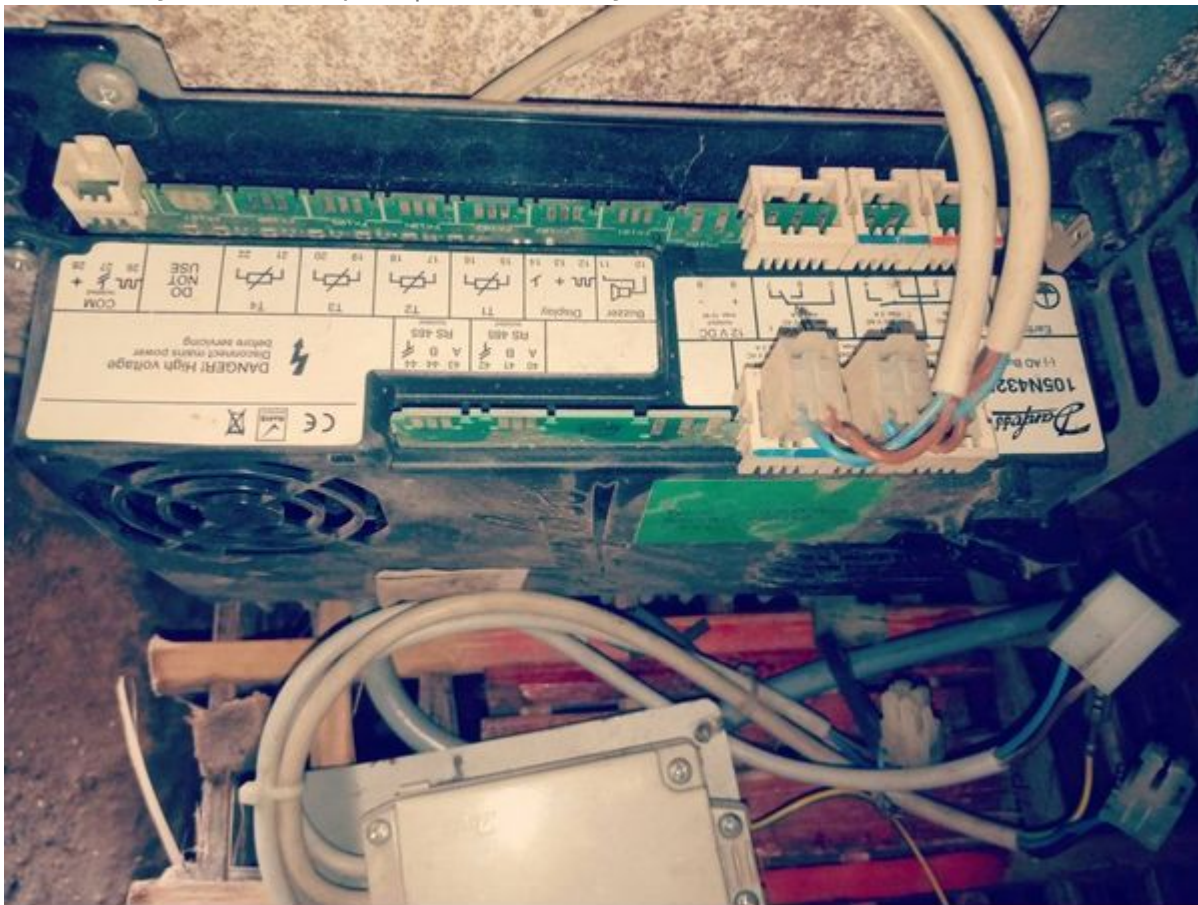
Private Picture Copyright: [WWW.MBSM.PRO](http://WWW.MBSM.PRO)

Mbsm.pro, Compressor, NE2130Z, R-134a, 1/3HP, 230V, Embraco, LBP

Mbsm.pro, Compressor, Secop, Danfoss, 5/8 Hp, LBP, INVERTER, Variable speed LBP, SLV15CNK, SLV15CNK.2, 104H8568, 104H8541, R290, 230V, refrigeration, Deep freezer AHT Australian, Capillary 3m/ 031

Category: compressor

written by www.mbsm.pro | 11 February 2026



Private Picture Copyright: [WWW.MBSM.PRO](http://WWW.MBSM.PRO)

Mbsm.pro, Compressor, Secop, Danfoss, 5/8 Hp, LBP, INVERTER, Variable speed LBP, SLV15CNK, SLV15CNK.2, 104H8568, 104H8541, R290, 230V, refrigeration