

Mbsm.pro, Compressor, Embraco, ASK75HG, 1/6 Hp++, Big, 1/5 Hp-, HMBP, R134a, 416 W, 220-240 V 50 Hz

Category: compressor

written by www.mbsm.pro | 3 March 2022



Private Picture Copyright: WWW.MBSM.PRO

Mbsm.pro, Compressor, Embraco, ASK75HG, 1/6 Hp++, Big, 1/5 Hp-, HMBP, R134a, 416 W, 220-240 V 50 Hz,

Sangchai refrigeration, Fl series, Rl series, Cl series, Hitachi Compressor, FL1675-sc, 1/5 Hp, R-134A, Low back pressure, 160 w, Deplacement 7.5 cm cube, 220-240 v 50 hz

Category: compressor

written by www.mbsm.pro | 3 March 2022

Hitachi Hermetic Compressors

FL Series

STANDARD MODEL

Application & Refrigerant LBP R134a

Model	Nominal Power		Cooling Capacity				D	Cooling			O	Wg	Motor Type	Power Source					Dimension
	HP	W	Hz	W	Kcal/h	BTU/h		cm ³	N	Oil				Fan	cm ³	Kg	1	2	
FL0634	1/12	65	50	78	67	266	3.42				200	6.8		•			•		Type1-165
		60	90	77	307	•								•	•				
FL0739	1/10	75	50	95	82	324	3.94				270	7.8		•			•		Type1-179
		60	108	93	368	•								•	•				
FL0845	1/8	85	50	105	90	358	4.50				270	8.1	RSIR	•			•		Type2-180
		60	118	101	403	•								•	•				
FL1052	1/6	100	50	120	103	409	5.19	•			240	8.3	CSIR	•			•		Type1-195
		60	140	120	478	•								•	•				
FL1157	1/6	110	50	135	116	461	5.70				240	8.7		•			•		Type1-195
		60	158	136	539	•								•	•				
FL1262	1/5	125	50	150	129	512	6.23	•			320	9.5		•			•		Type2-200
		60	170	146	580	•								•	•				
FL1675	1/5	160	50	185	159	631	7.47		•	•	300	10.6		•			•		Type3-211
		60	210	181	717	•								•	•				
FL1888	1/4	180	50	215	185	734	8.83		•	•	300	11.1		•			•		Type4-216
		60	250	215	853	•								•	•				

Private Picture Copyright: WWW.MBSM.PRO

Sangchai refrigeration, Fl series, Rl series, Cl series, Hitachi Compressor, FL1675-sc, 1/5 Hp, R-134A, Low back pressure, 160 w, Deplacement 7.5, 220-240 v 50 hz



Hitachi Hermetic Compressors

FL Series

STANDARD MODEL

Application & Refrigerant LBP R134a

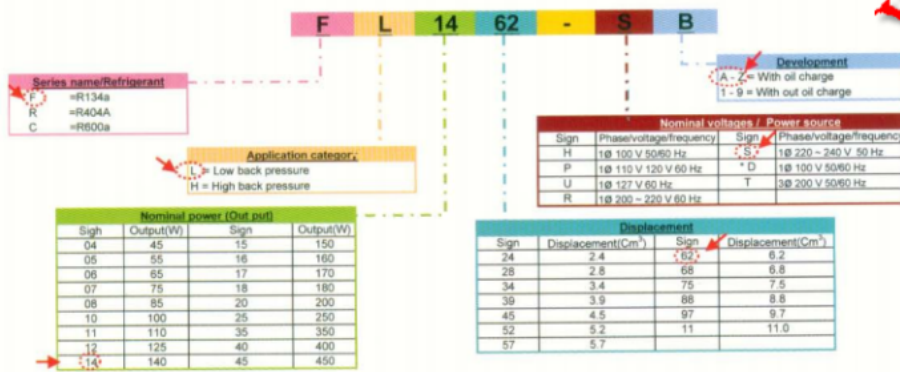
Model	Nominal Power		Cooling Capacity				D	Cooling			O	Wg	Motor Type	Power Source					Dimension
	HP	W	Hz	W	Kcal/h	BTU/h		cm3	N	Oil				Fan	cm3	Kg	1	2	
FL0634	1/12	65	50	78	67	266	3.42				200	6.8		•				•	Type1-165
			60	90	77	307								•	•	•			
FL0739	1/10	75	50	95	82	324	3.94				270	7.8		•			•	Type1-179	
			60	108	93	368								•	•	•			
FL0845	1/8	85	50	105	90	358	4.50				270	8.1	RSIR	•			•	Type1-179	
			60	118	101	403								•	•	•			
FL1052	1/6	100	50	120	103	409	5.19	•			240	8.3	CSIR	•			•	Type1-195	
			60	140	120	478								•	•	•			
FL1157	1/6	110	50	135	116	461	5.70				240	8.7		•			•	Type1-195	
			60	158	136	539								•	•	•			
FL1262	1/5	125	50	150	129	512	6.23	•			320	9.5		•			•	Type2-200	
			60	170	146	580								•	•	•			
FL1675	1/5	160	50	185	159	631	7.47		•	•	300	10.6		•			•	Type3-211	
			60	210	181	717								•	•	•			
FL1888	1/4	180	50	215	185	734	8.83		•	•	300	11.1		•			•	Type4-216	
			60	250	215	853								•	•	•			

Private Picture Copyright : WWW.MBSM.PRO



Private Picture Copyright : WWW.MBSM.PRO

Detail of Label



Private Picture Copyright: WWW.MBSM.PRO

Mbsm_dot_pro_private_PDF_Hitachi-catalogueTélécharger
Mbsm_dot_pro_private_PDF_FL1675Télécharger

Rsir/Rscr , Compresseur , ACC Cubigel
, Electrolux , HTH14AA , R600 , 220 /
240 V/50 Hz, 1/4HP , Engine 14 cm³, LBP
, 245W

Category: Technologie, Tester ok
written by www.mbsm.pro | 3 March 2022

C46553544

ACC

R600a



HTH14AA 1149

220--240V
50Hz

← **SUCTION** **CE**

8 486 0723410 2 





Private Picture : www.MBSM.PRO

Rsir/Rscr ,Compresseur , ACC Cubigel ,Electrolux ,HTH14AA ,R600 , 220 / 240 V/50 Hz, 9,37kg ,1/4HP ,Engine 14 cm³,LBP ,245W

COMPRESSOR, EMBRACO , fgs130ha, LBP
(Low Back Pressure) ,RSCR ,316 W
,1/3+ HP ,220-240 V 50 Hz ,1080 Btu/h
,11,14 c.c.,R134a

Category: Technologie,Tester ok
written by www.mbsm.pro | 3 March 2022

Embraco FGS130HAW



THERMALLY PROTECTED

10 LRA

R 134a

1 PH

220-240V~

50Hz

JOINVILLE-SC NO START WITHOUT STARTING DEVICE
MADE IN BRAZIL



513200607 FAB 1 26/JAN/05 E05DDHWA

HFC - 134a

△ 注意

△ 高温注意

Compressore	EMBRACO
Modello	FGS130HAW
Altezza (mm)	
Gas	R134a
Tensione	220-240 V 50 Hz
Applicazione	LBP (Low Back Pressure)
Test Condition	ASHRAE LBP 32
Cilindrata	11,14 c.c.
Motore	RSCR
Potenza (HP)	1/3+
Cap. Frigor. Watt	316
Cap. Frigor. Kcal	272
Cap. Frigor. Btu/h	1080
COP (W/W)	1,49
Watt assorbiti (W)	
Dispositivo di Avv.	
Condensatore	
Tipo Raffreddamento	



Embraco FGS130HAW



THERMALLY PROTECTED

10 LRA

R 134a

1 PH

220-240V~

50Hz

JOINVILLE-SC NO START WITHOUT STARTING DEVICE
MADE IN BRAZIL



513200607 FAB 1 26/JAN/05 E05DDHWA

HFC - 134a

△ 注意

△ 高温注意

Private Picture : www.MBSM.PRO

sm.pro

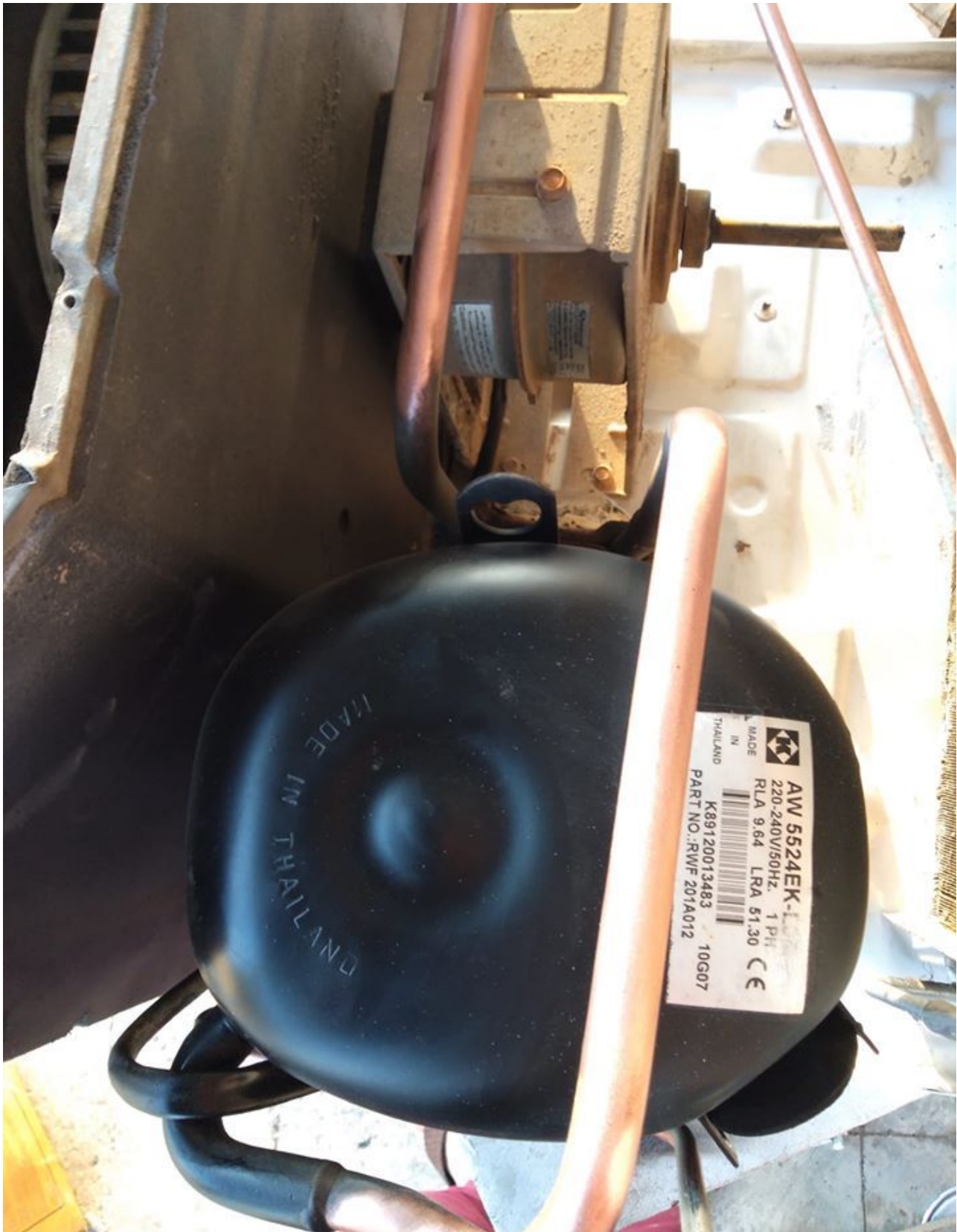
Compressore

EMBRACO

Modello	FGS130HAW
Altezza (mm)	
Gas	R134a
Tensione	220-240 V 50 Hz
Applicazione	LBP (Low Back Pressure)
Test Condition	ASHRAE LBP 32
Cilindrata	11,14 c.c.
Motore	RSCR
Potenza (HP)	1/3+
Cap. Frigor. Watt	316
Cap. Frigor. Kcal	272
Cap. Frigor. Btu/h	1080
COP (W/W)	1,49
Watt assorbiti (W)	
Dispositivo di Avv.	
Condensatore	
Tipo Raffreddamento	
Imballo (Pcs/Pallet)	

**HERMETIC ,AW5524EK ,Compressor ,
20,950 BTU ,230/1/60 R-22 ,: 220-240
V/50 Hz. , 1 Phase , 1.7458333333 TON**

Category: Technologie,Tester ok
written by www.mbsm.pro | 3 March 2022



PictureS Mbsm Dot Pro : www.mbsm.pro

Electrical : 220-240 V/50 Hz. 1 Phase
Nominal Performance
Capacity 6,140 / – Watts
20,950 / – BTU/Hr
5,280 / – Kcal/Hr
Power Input 2,089 / – Watts
Locked Rotor Amps 51.30 / – Amps

Max Continuous Current – / – Amps

Rated Load Amps 9.64 / – Amps

COP 2.94 / – Watts / Watts

EER 10.03 / – BTU/W-Hr

Testing Conditions

Condensing Temperature 54.40 °C 129.9 °F

Evaporating Temperature 7.20 / – °C 45.0 / – °F

Liquid Temperature 46.10 °C 115.0 °F

Return Gas Temperature 35.00 °C 95.0 °F

Ambient Temperature 35.00 °C 95.0 °F

Application

Evaporating Temp. Range HBP, A/C @ 0.00 ° C to 13.00 ° C
(32.0° F to 55.4° F)

Heat Pump -23.30 ° C to 13.00 ° C
(-9.9° F to 55.4° F)

Refrigerant R22

Refrigerant Flow Control Capillary Tube

Compressor Cooling Fan

Compressor and Motor data

Compressor Type Reciprocating

Displacement 43.10 cc.

Oil Type Mineral Oil

Oil Charge 964 cc.

Motor Type P.S.C ; 2 Pole 2,850 / – r/m

Voltage Range 198-264/- Volts 50/- Hz.

Winding Resistance at 25 ° C

Start 2.52 Ohms

Run 1.24 Ohms

Weight with Oil 27.72 Kg.

Weight with Oil and Accessories 28.05 Kg.

Electrical Components

Motor Protector

Type Internal Overload

Model Number 4042KGE661-2

Open / Close 125-135 / 50-70 ° C

1st Cycle trip at 25 ° C 50.00 Amps(main) 30.00 Amps(start)

Motor Starter

Type Potential Relay

Model Number 4043KGE681-4(RVA3G6D)

Pick Up (max.) 180.00-195.00 Volts

Drop Out (min.) 40.00-90.00 Volts

Terminal Cover KGM 901-3

Start Capacitor 88-106 µF 330 VAC.

Disch Resistor for Start Cap –

Run Capacitor 45 µF 370/440 VAC.

Mounting Kit

Rubber Grommet 4007KGM905-2

Sleeve Grommet 4023KGM903-2

Washer –

Since we are constantly improving our product , the

specification are subject to change without notice.
REV. DATE C / N No.
ECN 01-04-14 ECN 0515/13





Dot Pro : www.mbsm.pro

DOCUMENTATION PDF

Mbsm_dot_pro_private_pictureAW5524EKTélécharger

Mbsm.pro, GL90TB , COMPRESSEUR ACC CUBIGEL ELECTROLUX, R134A ,1/4HP 230V

Category: Solutions,Tester ok
written by Jamila | 3 March 2022



PictureS Mbsm Dot Pro : www.mbsm.pro

Mbsm.pro, GL90TB , COMPRESSEUR ACC CUBIGEL ELECTROLUX, R134A ,1/4HP 230V

- Puissance en cheval 1/4 CV
- Alimentation 220-240 V 50 Hz
- Gaz R134a HMBP
- Cylindrée du compresseur 8,8 cm³
- Température d'utilisation max. 32°C
- Complet avec starter, condensateur, boîtier et système de fixation

La photo montre l'aspect du compresseur, pas son étiquette réelle



PictureS Mbsm Dot Pro : www.mbsm.pro

Codes fabricants

- ACC-GL90TB
- ALPENINOX-83718
- ANGELO PO-34D6510
- CEM-340
- CUBIGEL-GL90TB
- DEXION-022260-00
- ELECTROLUX-83718
- FRIULINOX-995783
- ICEMATIC-19165548
- MARENO-25016599
- MONDIAL ELITE-4106073
- MONDIAL ELITE-4106073+1147212
- NECTA VENDING-986934
- ZANUSSI-83718

Documentation technique du compresseur frigorifique Cubigel **[regarder en dessous](#)**



PictureS Mbsm Dot Pro : www.mbsm.pro

MBSM.PRO , Compressor, Electrolux-Zem
GL60AA R134A ,1/6 HP , 1PH , 220-240
V 50 Hz

Category: Solutions,Tester ok
written by Jamila | 3 March 2022



PictureS Mbsm Dot Pro : www.mbsm.pro

MBSM.PRO , Compressor, Electrolux-Zem GL60AA R134A ,1/6 HP , 1PH , 220-240 V 50 Hz



- Puissance en cheval 1/6 CV
- Cylindrée 5.99 cm³
- 220-240 V 50 Hz
- Gaz R134a LBP
- Température d'utilisation max. 32°C
- Avec boîtier et système de démarrage

La photo montre l'aspect du compresseur, pas son étiquette réelle

Codes fabricants

- ACC-GL60AA
- ACC-GL60AB
- ACC-GL60AH
- CUBIGEL-GL60AA
- CUBIGEL-GL60AB
- CUBIGEL-GL60AH
- MONDIAL ELITE-4106004
- MONDIAL ELITE-1147031
- Embraco Aspera- B1112Z





PictureS Mbsm Dot Pro : www.mbsm.pro



PictureS Mbsm Dot Pro : www.mbsm.pro

Mbsm_dot_pro_private_PDF_GL60AATélécharger
Mbsm_dot_pro_private_PDF_-GL60AATélécharger

590689

GL60AA 99H271A

GL60AA

08283

03254

267799

THERMALLY 220 - 240 V~ 50 Hz PH1
PROTECTED

R134a



CE H



Type: Hermetic piston compressors Producer: ACC Series: HMBP

Model: GL60AA

General data

Refrigerant: R134a
Discharge element: C
Cooling: S
Maximum ambient temperature [°C]: 43

Compressor's data

Cylinder capacity [cm³]: 6
Displacement [m³/h]: 1
Weight [kg]: 9,1
Oil charge [cm³]: 265
Oil type: ISO VG 19 ESTER

Engine's data

Engine type: RSIR
Power [KM]: 1/6
Starting element: LST
Power supply: 220V 50Hz
Voltage range: 187-264
Locked rotor current [A]: 9,9
Running winding resistance (25°C) [Ω]: 15,6
Starting winding resistance (25°C) [Ω]: 21,31

Electrical data

Relays: 3003
Shielding element: MRA38028, T0508, AF18FU
Starting capacitor volume [μF]:

Connections

	milimeters	inches
Suction tube:	6,5	
Service tube:	6,5	
Discharge tube:	4,9	

**Mbsm.pro , Compresseur frigorifique,
Embraco Aspera ,T2178GK , 1Hp ,PIÈCES
FRIGO, 404A , 220-240 V 50 Hz**

Category: Solutions, Tester ok
written by Jamila | 3 March 2022



PictureS Mbsm Dot Pro : www.mbsm.pro

Mbsm.pro , Compresseur frigorifique, Embraco Aspera ,T2178GK , 1Hp ,PIÈCES FRIGO, 404A , 220-240 V 50 Hz



Select text



GAS R-404A / R-404A GAS



- Compresor hermético / Hermetic compressor
 - Monofásico / Single-phase
 - Voltaje / Voltage: 220V - 50 Hz

- Serie J, equipados con
 with case and valve

BAJA TEMPERATURA / LOW TEMPERATURE

Código Code	Modelos Models	HP HP	cm ³ cm ³	Temperatura de evaporación	
				-25°C	W
14341	NE2125GK	1/3	8.78	300	
20792	NE2134GK	3/8	12.12	420	
20793	T2155GK	1/2	14.50	520	
20796	T2168GK	5/8	17.40	680	
21086	T2178GK	1	20.40	830	
21082	NJ2192GK	3/4	26.20	1020	
20850	NJ2212GK	1 1/4	34.37	1330	

ALTA TEMPERATURA / HIGH TEMPERATURE

Código Code	Modelos Models	HP HP	cm ³ cm ³	Temperatura de evaporación	
				-10°C	-5°C
				W	W
21069	NB6144GK	1/5	4.52	300	380
21070	NB6152GK	1/5	5.02	350	440
36596	NB6165GK	1/4	6.05	430	530
21075	NE9213GK	1/2	12.12	860	1080
20762	T6217GK	5/8	14.50	960	
36557	T6220GK	3/4	17.40	1160	
21076	NJ9226GK	1	21.70	1580	



Mbsm_dot_pro_private_PDF_compresseur-embraco-aspera-t2478gkTélécharger



Private Picture Copyright : WWW.MBSM.PRO

Détails techniques

puissance 1 HP – cylindrée 20,40 cc

220/240V 50HZ

ASPERA

FRIULINOX

Friulinox Armoire réfrigérée AF12 -20, AF12 PA, AF12-14, AF12-14 VTR, AF12-14 VTRP, AF14, AF14 -22 SILVER VTR, AF6-1, AF6-7, AF6-7 VTR, AF7, AF7 -20 VTR, AF7 -22 SILVER VTR, AF7 ICE, AF7 VTR, AF7-14, AG60 GOLD, AG60 H20, AG60 SILVER, AG60 SILVERP, AG60P, AL-EN SUPER, AL-EN1, AL-EN1 SUPER, AL-EN1P, AL-EN2, AL-EN2 SUPER, AL-ENP, AP12-14, AP14, AP6, AP6-12, AP6-7, AP7, AP7-14, AR12-14, AR12-14 VTR, AR14, AR6-12, AR6-12 VTR, AR6-7, AR6-7 VTR, AR7, AR7-14, AR7-14 VTR, AR-EN GOLD, AR-EN SILVER, AR-EN1, AR-EN1 GOLD, AR-EN1 VTR, AR-EN2, AR-ENP, ARF142, ARF212 VTR, ARP142, ARP-EN1, ARP-EN2, ARRF21 VTR, EN GOLD, EN P, EN SILVER, EN1,

EN1 GOLD, EN1 H2O, EN1 H2O SILVER, EN1 SILVER, EN1 VTR, EN2, EN2 H2O

FriulinoxCellulede refroidissement ARP122

FriulinoxVitrineréfrigérée AFP122, AFP142, ARF122

ZANUSSI

ZanussiArmoireréfrigérée ALF110 (110071), ALNF220 (110073), ALF110 (110074), ALF120 (110075), ALNF220 (110079), ADN111 (110757), AKP110 (111000), AKS110 (111001), AKP120 (111002), AKN110 (111009), AKN120 (111010), AKP110UK (111121), AKN110UK (111123), AKNF220 (111127), AKF110UK (111129), AKF110 (111137), AKF120 (111138), ASF110 (112030), ASF110 (112032), AZP2203 (113228), AZP220360 (113229), ALN2203 (113231), AZP13430 (113234), AZF2203 (113236), AZF13430 (113237), MRF601/86 (726059), ETZ601 (726165), ETZ602 (726166), ESQC41F (726171), ESQC41FR (726172), ESQF41F (726173), ETE601 (726178), ETE602 (726179), ETE601L (726184), ETZ601L (726185), RS13RX2F (726321), RS13FX2F (726323), RS13DX2F (726335), RS13PX2F (726459), RS13PX2F6 (726461), RS13P42F (726462), RS13FX42F (726464), RS13DFX2F (726465), RS13R32F (726467), SB1300X2F (726468), RS13PW2F (726475), RS13FW2F (726476), MRF601/86 (726500), RS13FX2F6 (726688), EKZ601 (726890), EKZ602 (726891), EKE601 (726939), EKE602 (726940), EKE601L (726949), EKZ601L (726950), RS13RX2FG (726967), RS13FX2FG (726968), RS13P42F (727128), RS13FX42F (727129), RS13RX4H (727157), RS13FX4H (727158), KLP1300R (728059), KLP1300F (728060), RS13PX2FD (728063), E06C0M1V (728077), E06C1M1V (728078), E06C0D1V (728081), C06FD1G (728173), FGD36 (728271), RH06RD1G (728408), C06FD1G (728415), RS05RD1G (728433), E05N0D1C (728457), E05C0D1C (728458), E06N0D1C (728465), E06N0D2C (728466), E06N0D1V (728467), E06C0D1C (728468), E06C0D2C (728469), E06C0D1V (728470), E06N0D1C (728522), E06C0D1C (728523), KLN1300R (728605), KLP1300R (728606), KEP1300R (728607), KLP1300R (728608), KLP1300F (728609), KEP1300F (728610), KLP1300F (728611), EMVN500 (730005), DVP500V11C (730677), DVP501V11C (730678), DVP600V11C (730683), DVP601V11C (730684), DVP602V11C (730685), DVP600V12C (730686), DVP601V12C (730687), DVP602V12C (730688), DVN600V11C (730701), DVN601V11C (730702), DVN602V11C (730703), DVN600V12C (730704), DVN601V12C (730705), DVN602V12C (730706), DVN500V11C (730721), DVN501V11C (730722), MVP600V11C (730725), MVP601V11C (730726), MVP602V11C (730727), MVP600V12C (730728), MVP601V12C (730729), MVN600V11C (730741), MVN601V11C (730742), MVN600V12C (730743), MVN601V12C (730744), DVP500V11C (730768), MVP501V11C (730769), MVP502V11C (730770), MVN500V11C (730780), MVN501V11C (730781), MLC601V11C (730938), MLC602V11C (730939), DVC500V11C (731242), DVC501V11C (731243), MVC502V11C (731244), DVC600 (731250), DVC601 (731251), MVC602 (731252), DVC600 (731255), DVC601 (731256), MVC600V11C (731282), MVC601V11C (731283), MVC600V12C (731284), MVC601V12C (731285), MVC500V11C (731294), MVC501V11C (731295), DVC602 (731302), DVC602 (731303), DVNN13022C (732073), DVNN13122C (732074), MVNN13022C (732079), MVNN13122C (732080), DVNC13022C (732095), EDVC13122C (732096), MVNC13022C (732103), MVNC13122C (732110), MLC600V11C (732251), MLC601V11C (732255), MLC602V11C (732257), DVP6VP12CC (734079), PDVN901V11C (737216), PDVN901V12C (737217), PDVN907V11C (737218), PDVN907V12C (737219), PDVC901V11C (737220), PDVN907V12C (737221), PDVC907V11C (737222), PDVC907V11C (737223), ILF120 (770508), RVPE061 (771100), RSPE061 (771101), RVPE062 (771102), RVNE061 (771108), RVNE062 (771109), KVPE662 (771115), RPPE061 (771155), ILF110 (771537), ZLNF220 (771539), RD13PX2F (790018), RD13FX2F (790019)

ZanussiCellulede refroidissement ESQC41F (691044), ESQC41FR (691045), ESQF41F (691046), ESQF41FR (691047), ESQF41FR (726144)

ZanussiCongélateurcoffre MRF4808660 (726042), MRF401/86 (726058), MRF240/86 (726060), MRF480/86 (726061)

ZanussiTableréfrigérée STRP1101 (113084), STRP1102 (113088), STRP1601 (113092), TRN224C (113102), TRN224D (113103), TRN224E (113104), STRP1602 (113105), STRP1603 (113106), STRP2201 (113107), STRP2202 (113108), STRP2203 (113109), STRP1101S (113128), STRP1601S (113129), STRP2201S (113130), STRP1602R (113131), TRN132A (113150), TRN132B (113151), TRN132C (113152), TRNA132A (113153), TRNA132B (113154), TRNA132C (113155), TRRN132A (113156), TRRN132B (113157), TRRN132C (113158), TRN183A (113159), TRN183B (113160), TRN183C (113161), TRN183D (113162), TRNA183A (113163), TRNA183B (113164), TRNA183C (113165), TRNA183D (113166), TRRN183A (113167), TRRN183B (113168), TRRN183C (113169), TRRN183D (113170), TRN224A (113171), TRN224B (113172), TRNA224A (113173), TRNA224B (113174), TRRN224A (113175), TRRN224B (113176), TRF132A (113177), TRFA132A (113178), TRRF132A (113179), TRF183A (113180), TRFA183A (113181), TRRF183A (113182), TRN132AE (113183), TRN183AE (113184), TRN224AE (113185), TRF132AE (113186), TRF183AE (113187), STRP1603R (113192), STRP2201R (113193), STRP2202R (113194), STRP2203R (113195), STRP1101R (113196), STRP1102R (113197), STRP1601R (113198), TCGS/1V7T (121856), TCGS/2V7T (121857), TCGS/1VC27 (121858), TCGS/2V2C7 (121859), TCGRS/1V7T (121866), TCGRS/2V7T (121867), TCGRS/1VC2 (121868), TCGRS/2V2 (121869), TCGS2VC27T (121905), RCSN2M2 (726139), RCSN2M12 (726140), RCSN3M3 (726141), RCSN3M22 (726145), RCSN3M14 (726146), RCSN4M4 (726147), RCSN4M32 (726148), RCSN4M24 (726170), RCSN2M2U (726182), RCSN3M3U (726188), RCSN4M4U (726197), RCDR4M24 (726199), RCDR4M16 (726200), RCDR4M08 (726201), RCSN2M2R (726202), RCSN2M12R (726203), RCSN3M3R (726210), RCSN3M22R (726211), RCSN3M14R (726212), RCSN4M4R (726213), RCSN4M32R (726220), RCSN4M24R (726221), RCDR2M20 (726408), RCDR2M12 (726409), RCDR2M20U (726410), RCDR2M12U (726411), RCDR2M04R (726412), RCDR3M22 (726413), RCDR3M0U (726414), RCDR3M22U (726415), RCDE4M40 (726416), RCDR4M32 (726417), RCDR4M40U (726418), RCDR4M32U (726419), RCDFM20UX (726421), RCDF3M30U (726422), RCER2M2 (726423), RCER3M3 (726424), RCER4M4 (726425), RCEF2M2X (726426), RCEF3M3 (726427), RCDR2M20 (726550), RCDR2M12 (726551), RCDR2M04 (726552), RCDR2M20U (726553), RCDR2M12U (726554), RCDR2M04U (726555), RCDR2M20R (726556), RCDR2M12R (726557), RCDR2M04R (726558), RCDR3M30 (726559), RCDR3M22 (726560), RCDR3M14 (726561), RCDR3M06 (726562), RCDR3M0U (726563), RCDR3M22U (726564), RCDR3M14U (726565), RCDR3M06U (726566), RCDR3M30R (726567), RCDR3M22R (726568), RCDR3M14R (726569), RCDR3M06R (726570), RCDR4M40 (726571), RCDR4M32 (726572), RCDR4M40U (726573), RCDR4M32U (726574), RCDR4M40R (726575), RCDR4M32R (726576), RCDF2M20 (726577), RCDFM20U (726578), RCDF2M20R (726579), RCDF3M30 (726580), RCDF3M30U (726581), RCDF3M30R (726582), RCSER2M2 (726583), RCSER3M3 (726584), RCSER4M4 (726585), RCEF2M2 (726586), RCEF3M3 (726587), RCSN2M2T (726668), RCSN3M3T (726669), RCSN4M4T (726670), RCSER2M2U (726682), RCSER3M3U (726683), RCER4M4U (726684), RCEF2M2U (726685), RCEF3M3U (726686), RCSF2M24 (727009), RCSF3M34 (727010), HB2PNTR (727108), HB3PNTR (727109), HB4PNTR (727110), HB2P (728086), HB1P2C12 (728139), HB1P3C (728157), HB4C (728158), HB3P (728207), HB2P2C (728235), EDON590124 (728238), EDON590116 (728239), EDON590108 (728240), HB1P4C (728241), HB6C (728242), HB4P (728243), HB3P2C (728244), HB2P4C (728245), HB8C (728246), HB2PR (728247), HB1P2CR (728248), HB1P3CR (728254), HB4CR (728259), HB3PR (728264), HB2P2CR (728294), HB1P4CR (728295), HB6CR (728296), HB4PR (728297), HB3P2CR (728298), HB2P4CR (728299), HB8CR (728300), HB1P2C (728302), RCHBF1P2C (728304), RCHBF2P2C (728305), S02P200I (728352), S02P120I (728353), S04P300I (728354),

S04P220I (728361), S04P140I (728362), S05P400I (728363), S05P320I (728364),
E29N200I (728368), E29N120I (728369), E29N040I (728370), E29N200IA (728371),
E29N120IA (728372), E29N040IA (728373), E29N200R (728374), E29N120R (728375),
E29N040R (728376), E44N300I (728377), E44N220I (728378), E44N140I (728379),
E44N060I (728380), E44N300IA (728381), E44N220IA (728382), E44N140IA (728383),
E44N060IA (728384), E44N300R (728385), E44N220R (728386), E44N140R (728387),
E44N060R (728388), E59N400I (728389), E59N320I (728390), E59N400IA (728391),
E59N320IA (728392), E59N400R (728393), E59N310R (728394), E29C200I (728395),
E29C200IA (728396), E29C200R (728397), E44C300I (728398), E44C300IA (728399),
E44C300R (728400), S05P240I (728401), ED0N2912SE (728492), ED0N4413SE (728493),
ED0N5914SE (728494), EDOC2912SE (728495), EDOC4413SE (728496), HB2PU (728509),
HB3PU (728510), HB4PU (728511), RCSF2M2 (728512), RCSF3M3 (728517), RCSF2M12
(728518), RCSF3M22 (728519), S04P220R (728536), S04P140R (728537), S05P400R
(728538), S05P320R (728539), S05P240R (728540), HB1P2CRN (728552), HB1P3CRN
(728554), HB4CRN (728556), HB2P2CRN (728558), HB1P4CRN (728560), HB6CRN
(728562), HB3P2CRN (728564), HB2P4CRN (728566), HB8CRN (728568), HBF2PN
(728569), HBF1P2CN (728570), HBF3PN (728571), RCHBF2P2CN (728573), S02P200IA
(728585), S04P300IA (728586), S05P400IA (728587), S02P200R (728588), S02P120R
(728589), S04P300R (728590), RCHBF2P (728635), RCHBF3P (728636)

...et d'autres dispositifs

– ALPENINOX

T2178GK – ASPERA

01AS0970 – ATEL – ELECTROLUX PROFESSIONAL

T2178GK – EMBRACO – FRIULINOX – INDESIT – UNIVERBAR – WHIRLPOOL – ZANUSSI

...numéros de fabricant supplémentaires possibles