

# COMPRESSOR, MX21TBa, R404A, 1HP, CUBIGEL, HMBP, 220/240V, 50Hz, 20,72 cm<sup>3</sup>

Category: compressor

written by [www.mbsm.pro](http://www.mbsm.pro) | 5 April 2021



Private Picture Copyright: [WWW.MBSM.PRO](http://WWW.MBSM.PRO)

## **Détails techniques**

220/240V 50Hz

puissance 1 HP – cylindrée 21,75 cc

gaz R404a/R507 HMBP

...et d'autres dispositifs

MX21TB – ACC – CELLI

MX21TB – CUBIGEL – ELECTROLUX

605093 – GEV – ITV



Private Picture Copyright: WWW.MBSM.PRO

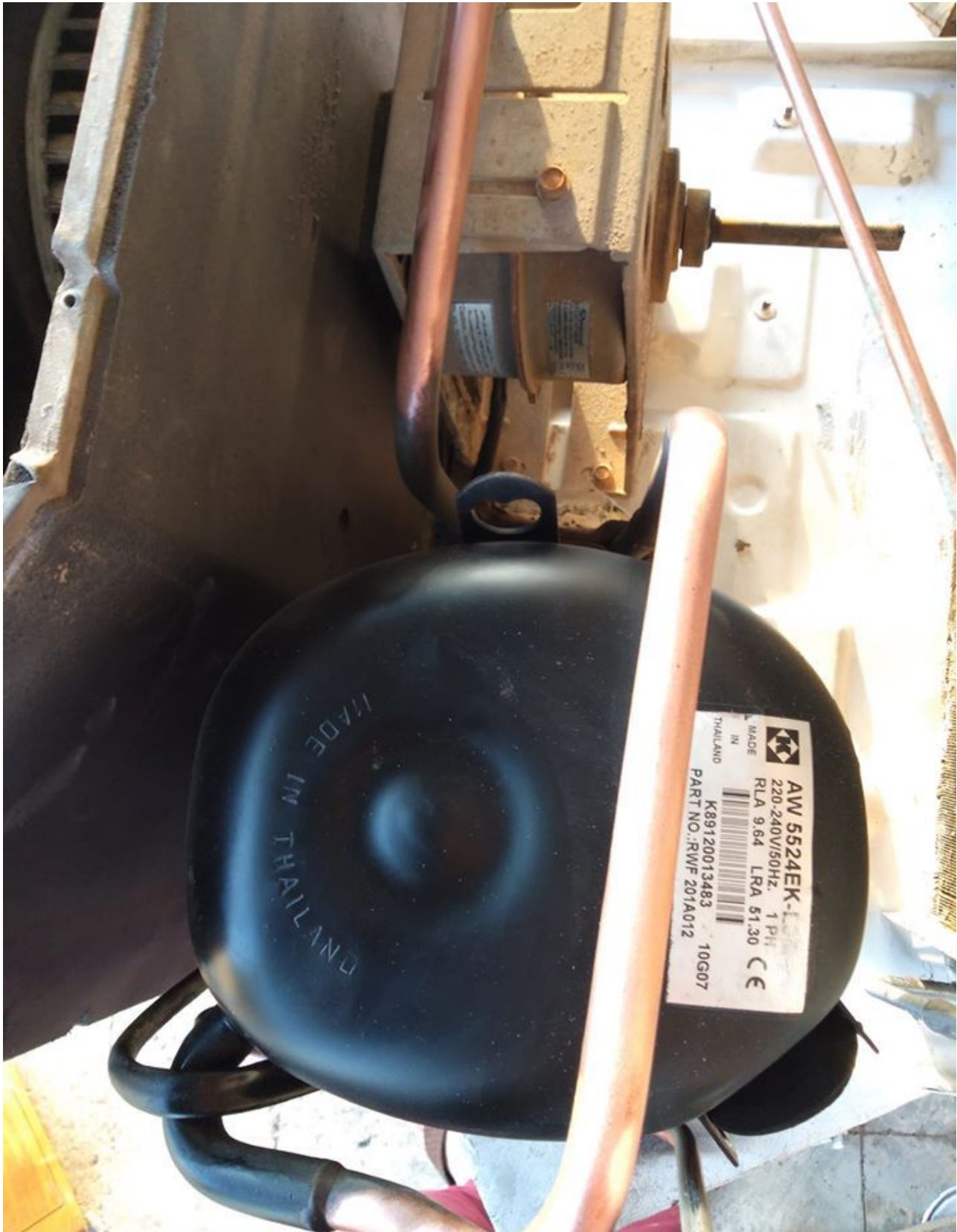
Mbsm\_dot\_pro\_private\_PDF\_danfoss\_MX21TBa\_R404A\_220\_50Télécharger

<b>Brand:</b>	Cubigel
<b>UPC:</b>	3070063
<b>Manufacturer reference:</b>	MX21TBa
<b>Application:</b>	HMBP
<b>Power supply:</b>	220/240V 50Hz
<b>Cooling capacity:</b>	3047 W
<b>Horsepower:</b>	1 Hp
<b>Displacement:</b>	21.7 cm <sup>3</sup>
<b>Refrigerant:</b>	R404a/R507
<b>Weight:</b>	17.5 kg
<b>Motor type:</b>	CSR
<b>Type:</b>	Hermetic reciprocating compressor

HERMETIC ,AW5524EK ,Compressor ,  
20,950 BTU ,230/1/60 R-22 ,: 220-240

# V/50 Hz., 1 Phase , 1.7458333333 TON

Category: Technologie, Tester ok  
written by [www.mbsm.pro](http://www.mbsm.pro) | 5 April 2021



PictureS Mbsm Dot Pro | [www.mbsm.pro](http://www.mbsm.pro)

Electrical : 220-240 V/50 Hz. 1 Phase  
Nominal Performance

Capacity 6,140 / – Watts

20,950 / – BTU/Hr

5,280 / – Kcal/Hr

Power Input 2,089 / – Watts

Locked Rotor Amps 51.30 / – Amps

Max Continuous Current – / – Amps

Rated Load Amps 9.64 / – Amps

COP 2.94 / – Watts / Watts

EER 10.03 / – BTU/W-Hr

Testing Conditions

Condensing Temperature 54.40 °C 129.9 °F

Evaporating Temperature 7.20 / – °C 45.0 / – °F

Liquid Temperature 46.10 °C 115.0 °F

Return Gas Temperature 35.00 °C 95.0 °F

Ambient Temperature 35.00 °C 95.0 °F

Application

Evaporating Temp. Range HBP, A/C @ 0.00 ° C to 13.00 ° C

(32.0° F to 55.4° F)

Heat Pump -23.30 ° C to 13.00 ° C

(-9.9° F to 55.4° F)

Refrigerant R22

Refrigerant Flow Control Capillary Tube

Compressor Cooling Fan

Compressor and Motor data

Compressor Type Reciprocating

Displacement 43.10 cc.

Oil Type Mineral Oil

Oil Charge 964 cc.

Motor Type P.S.C ; 2 Pole 2,850 / – r/m

Voltage Range 198-264/- Volts 50/- Hz.

Winding Resistance at 25 ° C

Start 2.52 Ohms

Run 1.24 Ohms

Weight with Oil 27.72 Kg.

Weight with Oil and Accessories 28.05 Kg.

Electrical Components

Motor Protector

Type Internal Overload

Model Number 4042KGE661-2

Open / Close 125-135 / 50-70 ° C

1st Cycle trip at 25 ° C 50.00 Amps(main) 30.00 Amps(start)

Motor Starter

Type Potential Relay

Model Number 4043KGE681-4(RVA3G6D)

Pick Up (max.) 180.00-195.00 Volts

Drop Out (min.) 40.00-90.00 Volts

Terminal Cover KGM 901-3

Start Capacitor 88-106 μF 330 VAC.

Disch Resistor for Start Cap –

Run Capacitor 45 μF 370/440 VAC.

Mounting Kit

Rubber Grommet 4007KGM905-2

Sleeve Grommet 4023KGM903-2

Washer –

Since we are constantly improving our product , the specification are subject to change without notice.

REV. DATE C / N No.

ECN 01-04-14 ECN 0515/13





dot Pro : [www.mbsm.pro](http://www.mbsm.pro)

DOCUMENTATION PDF

Mbsm\_dot\_pro\_private\_pictureAW5524EKTélécharger