

LG ,NR52AEG ,1/5Hp , R12 , 220v 50Hz , 1 Phase

Category: Technologie,Tester ok
 written by www.mbsm.pro | 21 May 2020

Performance Datasheet (LGE) : R12														
* : UNDER DEVELOPMENT														
APPLICATION	VOLTAGE	FREQUENCY	MODEL	DISPLACEMENT	PERFORMANCE									
					50Hz @ ASHRAE						60Hz @ ASHRAE			
					CAPACITY (-23.3°C)			CONSUMPTION POWER			EER	CAPACITY (-23.3°C)		
V	Hz	cc	kcal/h	w	Btu/h	w	Btu/wh	kcal/h	w	Btu/h	w	Btu/wh		
LBP	220	50	NS24AJG	2.42	45	52	179	80	2.23					
			NSA43AJG	4.29	96	112	381	117	3.26					
			TS24AJG	2.44	45	52	179	80	2.23					
			TS43AJG	4.24	96	112	381	117	3.26					
			LX110AJM	11.03	265	308	1052	257	4.09					
	220-240	50	NS30AEG	3.05	64	74	254	83	3.06					
			NS36AEG	3.58	74	86	294	92	3.19					
			TS30AEG	3.05	64	74	254	83	3.06					
			TS36AEG	3.61	74	86	294	92	3.19					
			NR45AEG	4.50	97	113	385	120	3.21					
			NR52AEG	5.19	121	141	480	138	3.48					
			NR62AEG	6.23	152	177	603	162	3.72					
			NR62CEG	6.23	150	174	596	167	3.57					
			NR62DEG	6.23	138	160	548	153	3.58					
			LX72AEG	7.22	175	203	695	178	3.90					
			LX86AEG	8.56	215	250	854	213	4.01					
			LX110AEH	11.03	265	308	1052	250	4.21					
			110-115	60	NS30AQG	3.05						74	86	294
	NS36AQG	3.58								88	102	349	113	3.09
	TS30AQG	3.05								74	86	294	106	2.77
	TS36AQG	3.61								88	102	349	113	3.09
	NR45AQG	4.50								120	140	476	137	3.48
	NR52AQG	5.19								134	156	532	152	3.50
	LX67AQG	6.66						200	233	794	195	4.07		
	115	60	NS24ACG	2.42						53	62	210	79	2.66
			NS24BCG	2.42						56	65	222	73	3.05
			NS30ACG	3.05						74	86	294	95	3.09
			TS24ACG	2.44						53	62	210	79	2.66
TS24BCG			2.44						56	65	222	73	3.05	
TS30ACG			3.05						74	86	294	95	3.09	
127	60	NR24AFG	2.42						53	62	210	79	2.66	

Private Picture Copyright: WWW.MBSM.PRO

LG ,NR52AEG ,1/5Hp , R12 , 220v 50Hz , 1 Phase

Em40Hnp, Embraco Compressor, Aspera ,R134A 240V 50hz , 1/8 Hp , 1 Phase

Category: Technologie,Tester ok
 written by www.mbsm.pro | 21 May 2020



Private Picture Copyright : WWW.MBSM.PRO

Em40Hnp, Embraco Compressor, Aspera ,R134A 240V 50hz , 1/8 Hp , 1 Phase

Tecumseh , CAJ4511A ,Compressor , 1 HP, 208-230V, 1 PHASE, R12, Hermetic ,Reciprocating Compressor Replacement

Category: Technologie,Tester ok
written by www.mbsm.pro | 21 May 2020

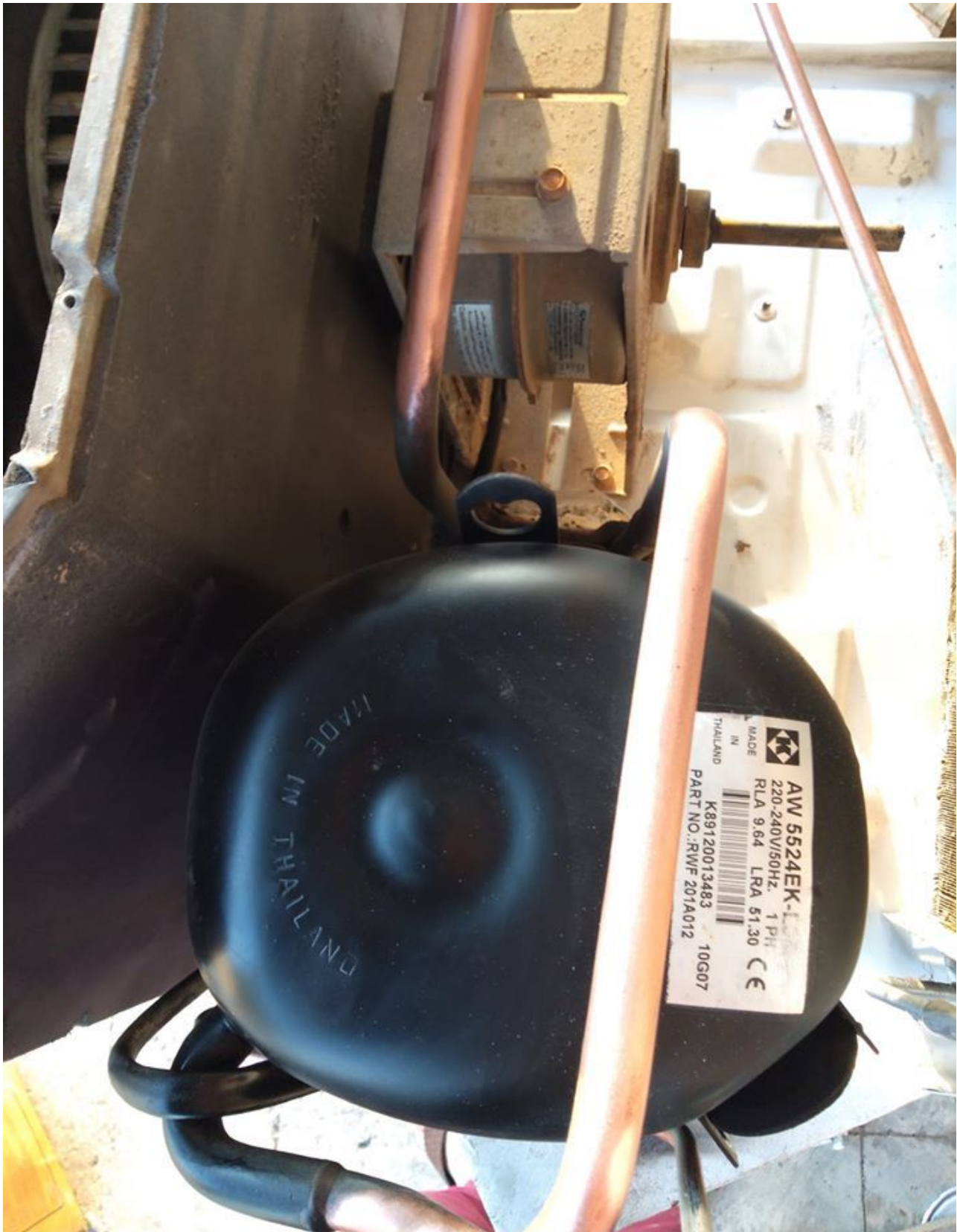


Private Picture : www.MBSM.PRO

Tecumseh , CAJ4511A ,Compressor , 1 HP, 208-230V, 1 PHASE, R12, Hermetic ,Reciprocating Compressor Replacement

HERMETIC ,AW5524EK ,Compressor ,
20,950 BTU ,230/1/60 R-22 ,: 220-240
V/50 Hz. , 1 Phase , 1.7458333333 TON

Category: Technologie,Tester ok
written by www.mbsm.pro | 21 May 2020



PictureS Mbsm Dot Pro : www.mbsm.pro

Electrical : 220-240 V/50 Hz. 1 Phase
Nominal Performance
Capacity 6,140 / – Watts
20,950 / – BTU/Hr
5,280 / – Kcal/Hr
Power Input 2,089 / – Watts
Locked Rotor Amps 51.30 / – Amps

Max Continuous Current – / – Amps

Rated Load Amps 9.64 / – Amps

COP 2.94 / – Watts / Watts

EER 10.03 / – BTU/W-Hr

Testing Conditions

Condensing Temperature 54.40 °C 129.9 °F

Evaporating Temperature 7.20 / – °C 45.0 / – °F

Liquid Temperature 46.10 °C 115.0 °F

Return Gas Temperature 35.00 °C 95.0 °F

Ambient Temperature 35.00 °C 95.0 °F

Application

Evaporating Temp. Range HBP, A/C @ 0.00 ° C to 13.00 ° C
(32.0° F to 55.4° F)

Heat Pump -23.30 ° C to 13.00 ° C
(-9.9° F to 55.4° F)

Refrigerant R22

Refrigerant Flow Control Capillary Tube

Compressor Cooling Fan

Compressor and Motor data

Compressor Type Reciprocating

Displacement 43.10 cc.

Oil Type Mineral Oil

Oil Charge 964 cc.

Motor Type P.S.C ; 2 Pole 2,850 / – r/m

Voltage Range 198-264/- Volts 50/- Hz.

Winding Resistance at 25 ° C

Start 2.52 Ohms

Run 1.24 Ohms

Weight with Oil 27.72 Kg.

Weight with Oil and Accessories 28.05 Kg.

Electrical Components

Motor Protector

Type Internal Overload

Model Number 4042KGE661-2

Open / Close 125-135 / 50-70 ° C

1st Cycle trip at 25 ° C 50.00 Amps(main) 30.00 Amps(start)

Motor Starter

Type Potential Relay

Model Number 4043KGE681-4(RVA3G6D)

Pick Up (max.) 180.00-195.00 Volts

Drop Out (min.) 40.00-90.00 Volts

Terminal Cover KGM 901-3

Start Capacitor 88-106 µF 330 VAC.

Disch Resistor for Start Cap –

Run Capacitor 45 µF 370/440 VAC.

Mounting Kit

Rubber Grommet 4007KGM905-2

Sleeve Grommet 4023KGM903-2

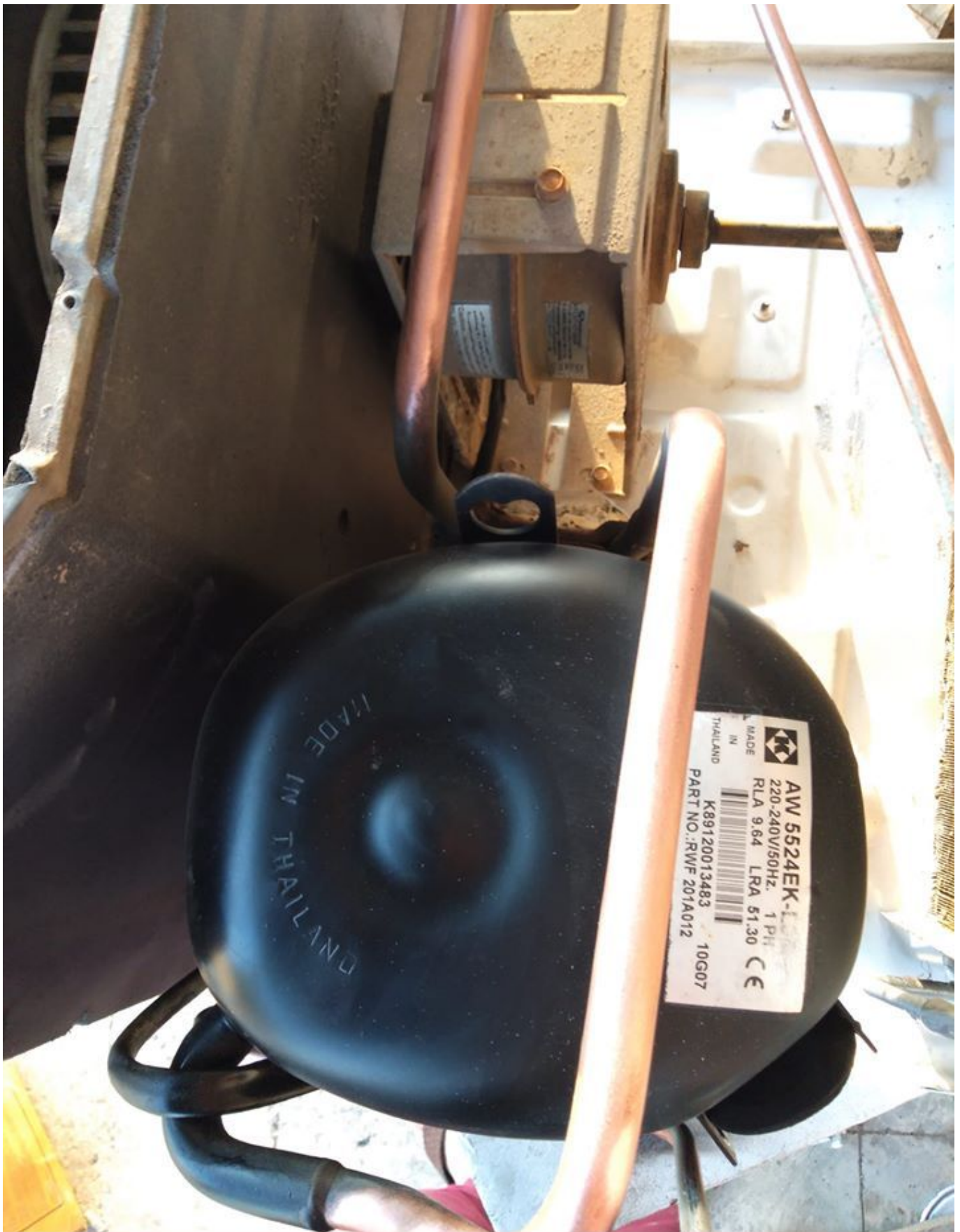
Washer –

Since we are constantly improving our product , the

specification are subject to change without notice.

REV. DATE C / N No.

ECN 01-04-14 ECN 0515/13





dot Pro : www.mbsm.pro

DOCUMENTATION PDF

Mbsm_dot_pro_private_pictureAW5524EKTélécharger