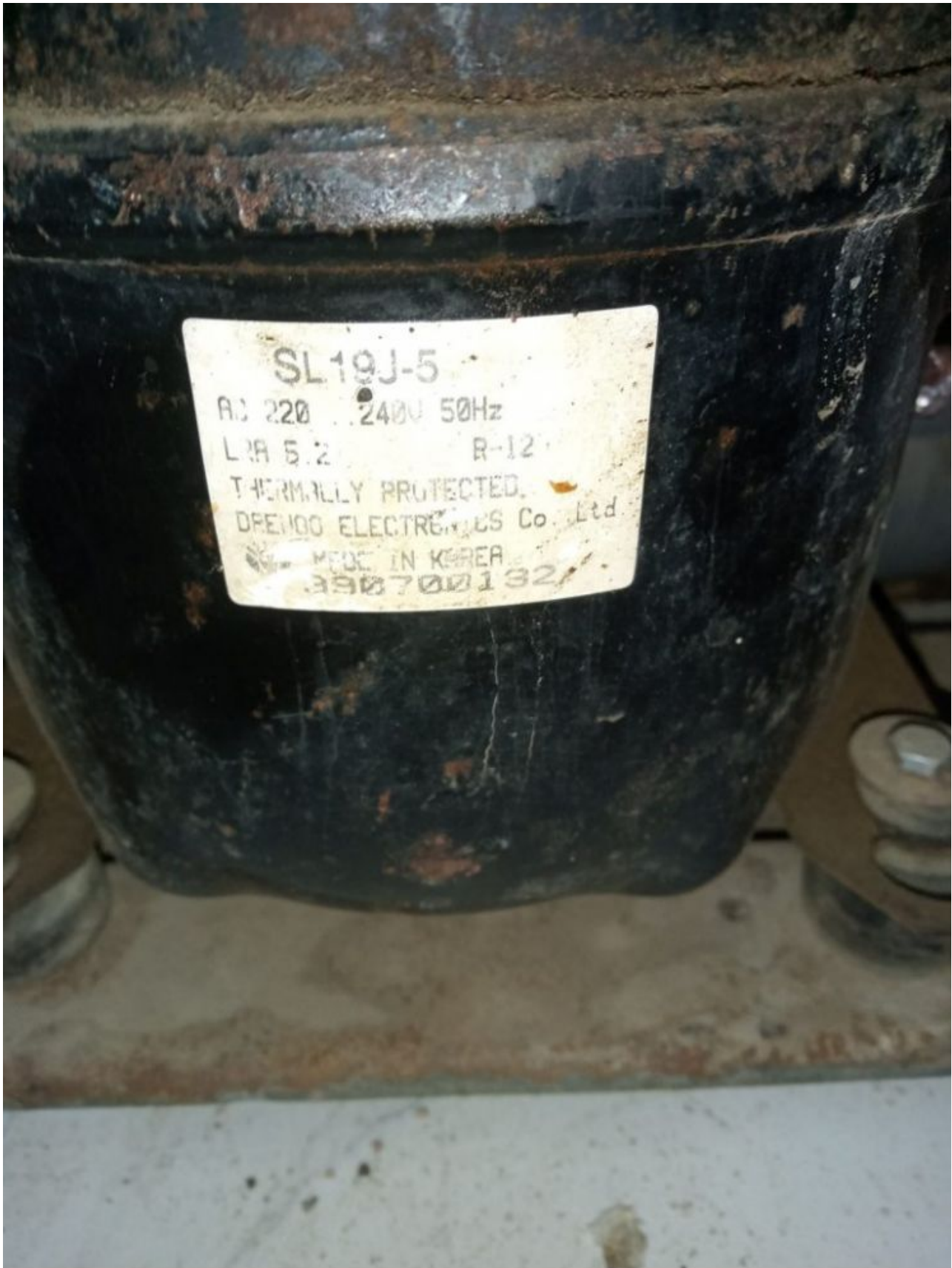


Mbsm.pro, Compressor, Hermatic,
Daewoo, Refrigeration, SL19J-4, R-12,
AC 220V 60Hz, 1/6 hp, lbp, Btu/h 468,
G160aa, r134a, zem, JX46LHS5, Daewoo-
r134a

Category: compressor

written by www.mbsm.pro | 19 February 2022



Private Picture Copyright: WWW.MBSM.PRO

Mbsm.pro, Compressor, Hermatic, Daewoo, Refrigeration, SL19J-4, R-12, AC 220V 60Hz, 1/6 hp, lbp, Btu/h 468, G160aa, r134a, zem, JX51LHP5-K, Daewoo

Mbsm.pro, Compressor, TLS6F, Danfoss, 102G4620, Lbp, 125 W, 220 v, 1/6 Hp, 1 phase, R134a

Category: compressor

written by www.mbsm.pro | 19 February 2022



Private Picture Copyright: WWW.MBSM.PRO

Mbsm.pro, Compressor, TLS6F, Danfoss, 102G4620, Lbp, 125 W, 220 v, 1/6 Hp, 1 phase, R134a

Mbsm.pro, original, jiaXipera, compressor, NB1113Y, NT1113Y, T1113Y, TX1113Y, 1/6 hp, 154w, r600, RSIR

Category: compressor

written by www.mbsm.pro | 19 February 2022



Private Picture Copyright : WWW.MBSM.PRO

Product Description

Refrigeration R600A Jiaxipera Domestic Refrigerator Commercial Compressor
 supply refrigeration parts refrigerator compressor
 fridge compressor, refrigerator compressor, freezer compressor,refrigeration
 compressor.

Compressor Model	Displ. (cm3)	Cooling Type	Motor Type	Vol./Fre. / (V~/Hz)	Capacity(W)	COP (W/W)	Capacitor (μF)	Certificate			
ASHRAE	CECOMAF	SWP	ASHRAE	CECOMAF	SWP						
(-23.3°C)	(-25°C)	(-28/40°C)	(-23.3°C)	(-25°C)	(-28/40°C)						
N1080Y	5.5	ST	RSIR	220-240~/50	95	71	/	1.40	1.09	/ /	VDE,CCC
N1090Y	6.0	ST	RSIR	220-240~/50	100	75	/	1.40	1.09	/ /	VDE,CCC
N1110Y	6.7	ST	RSIR	220-240~/50	114	86	/	1.40	1.09	/ /	VDE,CCC
N1111Y	7.2	ST	RSIR	220-240~/50	130	98	/	1.40	1.09	/ /	VDE,CCC
N1112Y	8.1	ST	RSIR	220-240~/50	140	105	/	1.40	1.09	/ /	VDE,CCC
N1113Y	8.9	ST	RSIR	220-240~/50	154	114	/	1.40	1.09	/ /	VDE,CCC
N1114Y	9.6	ST	RSIR	220-240~/50	168	126	/	1.42	1.11	/ /	VDE,CCC
NT1112Y	8.10	ST	RSCR	220-240~/50	140	105	/	1.56	1.22	/ 4.0	VDE,CCC
NT1113Y	8.9	ST	RSCR	220-240~/50	154	116	/	1.56	1.22	/ 4.0	VDE,CCC
NT1114Y	9.6	ST	RSCR	220-240~/50	170	128	/	1.56	1.22	/ 4.0/4.5	VDE,CCC
NT1117Y	11.2	ST	RSCR	220-240~/50	198	149	/	1.56	1.22	/ 4.0	CCC
NU1080Y	5.5	ST	RSCR	220-240~/50	95	71	/	1.55	1.21	/ 3.0	VDE,CCC
NU1090Y	6.0	ST	RSCR	220-240~/50	102	77	/	1.58	1.23	/ 4.0	VDE,CCC
NU1110Y	6.70	ST	RSCR	220-240~/50	115	86	/	1.58	1.23	/ 4.0	VDE,CCC
NU1111Y	7.2	ST	RSCR	220-240~/50	130	98	/	1.62	1.26	/ 3.5/4.0	VDE,CCC
NU1112Y	8.10	ST	RSCR	220-240~/50	140	105	/	1.62	1.26	/ 4.0	VDE,CCC
NU1113Y	8.9	ST	RSCR	220-240~/50	154	116	/	1.62	1.26	/ 4.0	VDE,CCC
NU1114Y	9.6	ST	RSCR	220-240~/50	170	128	/	1.62	1.26	/ 4.0/4.5	VDE,CCC
NU1116Y	10.5	ST	RSCR	220-240~/50	186	140	/	1.60	1.25	/ 4.5	VDE,CCC
NU1112GY	8.10	ST	RSIR/RSCR	220-240~/50	140	105	/	1.54/1.62	1.20/1.26	/ 3.5/4.0	VDE,CCC
NU1113GY	8.90	ST	RSIR/RSCR	220-240~/50	154	116	/	1.54/1.62	1.20/1.26	/ 4.0	VDE,CCC
NS1060Y	4.2	ST	RSCR	220-240~/50	65	49	/	1.60	1.25	/ 2.0	VDE,CCC
NS1080Y	5.5	ST	RSCR	220-240~/50	95	71	/	1.62	1.26	/ 3.0	VDE,CCC
NS1090Y	6.0	ST	RSCR	220-240~/50	105	79	/	1.66	1.29	/ 2.0/3.0	VDE,CCC
NS1110Y	6.7	ST	RSCR	220-240~/50	116	87	/	1.66	1.29	/ 3.0/4.0	VDE,CCC
NS1111Y	7.2	ST	RSCR	220-240~/50	130	98	/	1.66	1.29	/ 3.5/4.0	VDE,CCC
NS1112Y	8.1	ST	RSCR	220-240~/50	142	107	/	1.68	1.31	/ 3.5/4.0	VDE,CCC
NS1113Y	8.9	ST	RSCR	220-240~/50	155	116	/	1.68	1.31	/ 4.0	VDE,CCC

NS1114Y	9.6	ST	RSCR	220-240~/50	172	129	/	1.68	1.31	/	4.0	VDE,CCC
NS1116Y	10.5	ST	RSCR	220-240~/50	186	140	/	1.68	1.31	/	4.0/5.0	VDE,CCC
NS1117Y	11.2	ST	RSCR	220-240~/50	198	149	/	1.68	1.31	/	4.0	CCC
NC1090Y	6.0	ST	RSCR	220-240~/50	105	79	/	1.73	1.35	/	2.5	VDE,CCC
NC1110Y	6.7	ST	RSCR	220-240~/50	116	87	/	1.75	1.37	/	3.0/4.0	VDE,CCC
NC1111Y	7.2	ST	RSCR	220-240~/50	128	96	/	1.75	1.37	/	4.0	VDE,CCC
NC1112Y	8.1	ST	RSCR	220-240~/50	142	107	/	1.75	1.37	/	4.0	VDE,CCC
NC1113Y	8.9	ST	RSCR	220-240~/50	155	116	/	1.75	1.37	/	4.0	VDE,CCC
NC1114Y	9.6	ST	RSCR	220-240~/50	172	129	/	1.75	1.37	/	3.0/4.0	VDE,CCC
NC1116Y	10.5	ST	RSCR	220-240~/50	186	140	/	1.75	1.37	/	3.0	VDE,CCC
NX1080Y	5.5	ST	RSCR	220-240~/50	96	72	/	1.83	1.43	/	2.0	VDE,CCC
NX1090Y	6.0	ST	RSCR	220-240~/50	108	81	/	1.83	1.43	/	2.5	VDE,CCC
NX1110Y	6.7	ST	RSCR	220-240~/50	117	88	/	1.83	1.43	/	2.5	VDE,CCC
NX1111Y	7.2	ST	RSCR	220-240~/50	130	98	/	1.83	1.43	/	3.0	VDE,CCC
NX1112Y	8.1	ST	RSCR	220-240~/50	145	109	/	1.83	1.43	/	3.0	VDE,CCC
NX1113Y	8.9	ST	RSCR	220-240~/50	155	116	/	1.83	1.43	/	2.5	VDE,CCC
NX1114Y	9.6	ST	RSCR	220-240~/50	172	129	/	1.83	1.43	/	4.0	VDE,CCC
NB1080Y	5.5	ST	RSCR	220-240~/50	96	72	84	1.88	1.47	2.02	2.0	VDE,CCC
NB1090Y	6.0	ST	RSCR	220-240~/50	108	81	95	1.88	1.47	2.02	2.5	VDE,CCC
NB1110Y	6.7	ST	RSCR	220-240~/50	117	88	105	1.90	1.48	2.02	2.5	VDE,CCC
NB1111Y	7.2	ST	RSCR	220-240~/50	130	98	114	1.90	1.48	2.02	3.0	VDE,CCC
NB1112Y	8.1	ST	RSCR	220-240~/50	145	109	127	1.90	1.48	2.02	3.0	VDE,CCC
NB1113Y	8.9	ST	RSCR	220-240~/50	155	116	136	1.90	1.48	2.02	2.5	VDE,CCC
NB1114Y	9.6	ST	RSCR	220-240~/50	172	129	151	1.90	1.48	2.02	4.0	VDE,CCC
NB1116Y	10.5	ST	RSCR	220-240~/50	186	140	163	1.90	1.48	2.02	4.0	VDE,CCC
NE1080Y	5.5	ST	RSCR	220-240~/50	96	72	84	1.93	1.51	2.04	2.0	CCC
NE1090Y	6.0	ST	RSCR	220-240~/50	108	81	95	1.93	1.51	2.04	2.5	
NE1110Y	6.7	ST	RSCR	220-240~/50	117	88	105	1.95	1.52	2.04	2.5	CCC
NE1111Y	7.2	ST	RSCR	220-240~/50	130	98	114	1.95	1.52	2.04	3.0	CCC
NE1112Y	8.1	ST	RSCR	220-240~/50	145	109	127	1.95	1.52	2.04	3.0	CCC

Le modèle que nous pouvons fournir:

Fiche technique du compresseur frigorifique série T R600a (LBP)

Compresseur	Dépl.	Type De moteur	Vol./Fre.	Capacité de refroidissement	CONFÉRENCE des parties		Matériel deD'enroulement	Certificat
					ASHRAE	CECOMAF		
ASHRAE	CECOMAF	ASHRAE	CECOMAF					
W	BTU/h (Cm3)	Kcal	W (V~/Hz)	W/W Principal/Auxiliaire.	BTU/Wh	W/W		
T1090Y	6	RSIR	220 ~ 240/50	100	341	86	75	1.42 4.85 1.11 Al/Al VDE, CCC
T1110Y	6.7	RSIR	220 ~ 240/50	115	392	99	86	1.45 4.95 1.13 Al/Al VDE, CCC
T1111Y	7.2	RSIR	220 ~ 240/51	126	430	108	95	1.4 4.78 1.09 Al/Al VDE, CCC
T1112Y	8.1	RSIR	220 ~ 240/50	140	478	120	105	1.42 4.85 1.11 Al/Al VDE, CCC
T1113Y	8.9	RSIR	220 ~ 240/50	152	519	131	114	1.42 4.85 1.11 Al/Al VDE, CCC
T1114Y	9.6	RSIR	220 ~ 240/50	168	573	144	126	1.42 4.85 1.11 Al/Al VDE, CCC
T1116Y	10.5	RSIR	220 ~ 240/50	184	628	158	138	1.4 4.78 1.09 Al/Al VDE, CCC



Private Picture Copyright: WWW.MBSM.PRO



Private Picture Copyright: WWW.MBSM.PRO

MBSM.PRO, All Compressor in One File , Pdf and Print

Category: compressor

written by www.mbsm.pro | 19 February 2022



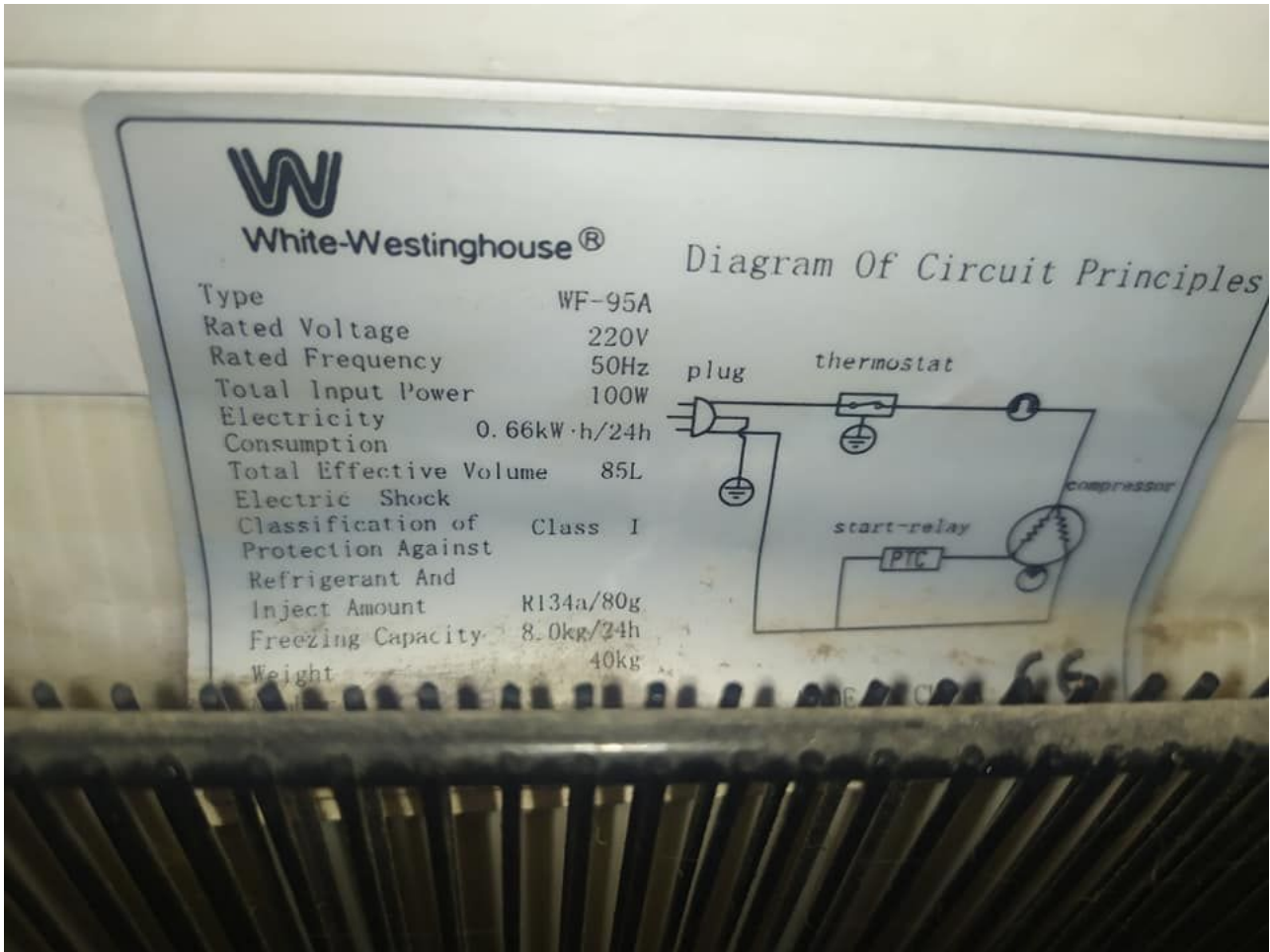
Private Picture Copyright : WWW.MBSM.PRO

MBSM.PRO, All Compressor in One File , Pdf and Print

Panasonic, refrigerator, compressor, SB48C95GAW5, 110w, White-Westinghouse refrigerator, 220v, 50 Hz, 85L, R134A/80G, 1/6 Hp

Category: compressor

written by www.mbsm.pro | 19 February 2022

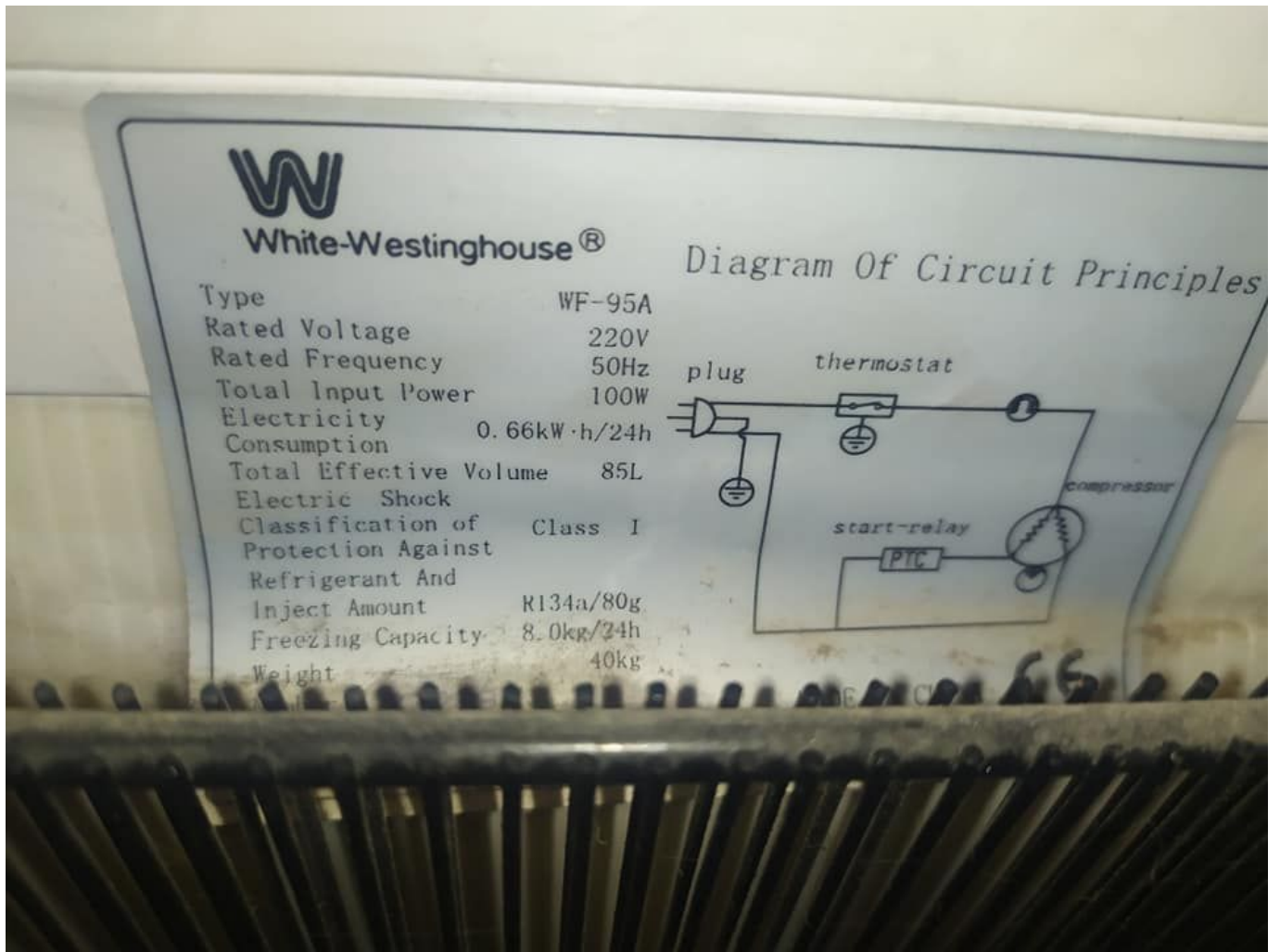


Private Picture Copyright : WWW.MBSM.PRO

Specification

Item	Performance characteristics
Refrigerant	R134a
Displacement (cm ³)	4.8
Voltage (V)	220/240
Frequency (Hz)	50
Motor Type	RSIR
Capacity@ASHRAE	110
COP@ASHRAE	1.03/0.99
Capacity@CECOMAF	—
COP@CECOMAF	—





Private Picture Copyright : WWW.MBSM.PRO

Mbsm_dot_pro_private_PDF_SB48C95GAW5Télécharger

Hitachi Compressor, LBP, R134a, FL1152-RG, 1/6 Hp, 155W, série R012

Category: compressor

written by www.mbsm.pro | 19 February 2022

Code No.	Model	HP	Capacity (W)	Current (A)	Efficiency COP (w/w)	Voltage / Frequency
R134a Models						
R012001	FL 06S34-TAB	1/12	85	0.70	0.93	220V – 240V / 50Hz
R012002	FL 0739-SQ	1/10	114	0.72	1.20	
R012003	FL 0847-SD	1/8	130	0.83	1.19	
R012005	FL 1152-SB	1/6	143	0.82	1.27	
R012006	FL 1257-SR	1/5	160	0.90	1.25	
R012007	FL 14S62-TAD	1/5	175	0.95	1.30	
R012008	FL 1568-SQ	1/4	200	1.11	1.30	
R012009	FL 20S88-TAC	1/3	255	1.50	1.25	
R012010	FL1888-SE	1/3	245	1.51	1.25	
R600a Models						
	CL 0545-SZ	1/12	62	0.70	1.12	220V – 240V / 50Hz
	CL 1297-SA	1/5	156	0.90	1.46	
	CL 1310-SA	1/5+	163	0.95	1.48	
R600a Models (Inverter)						
	CL 1588-DZ	1/6	134	0.83	1.62	220V – 240V / 50Hz
	CL 1610-DL	1/5	160	0.90	1.65	

Private Picture Copyright : WWW.MBSM.PRO

Code No.	Model	HP	Capacity (W)	Current (A)	Efficiency COP (w/w)	Voltage / Frequency
R134a Models						
R012001	FL 06S34-TAB	1/12	85	0.70	0.93	220V – 240V / 50Hz
R012002	FL 0739-SQ	1/10	114	0.72	1.20	
R012003	FL 0847-SD	1/8	130	0.83	1.19	
R012005	FL 1152-SB	1/6	143	0.82	1.27	
R012006	FL 1257-SR	1/5	160	0.90	1.25	
R012007	FL 14S62-TAD	1/5	175	0.95	1.30	
R012008	FL 1568-SQ	1/4	200	1.11	1.30	
R012009	FL 20S88-TAC	1/3	255	1.50	1.25	
R012010	FL1888-SE	1/3	245	1.51	1.25	
R600a Models						
	CL 0545-SZ	1/12	62	0.70	1.12	220V – 240V / 50Hz
	CL 1297-SA	1/5	156	0.90	1.46	
	CL 1310-SA	1/5+	163	0.95	1.48	
R600a Models (Inverter)						
	CL 1588-DZ	1/6	134	0.83	1.62	220V – 240V / 50Hz
	CL 1610-DL	1/5	160	0.90	1.65	

Private Picture Copyright : WWW.MBSM.PRO

HITACHI FL1152-RG

220V 50/60Hz OIL 2010.04.27



SERIAL NO. 00542 HFC-134a

⚠ WARNING | HIGH TEMPERATURE
ELECTRIC SHOCK
DO NOT TOUCH H24

60Hz	FL1462-P*	6.2	180	154	615	350	St	RSR	10.5	200	
	FL1462-P*	6.2	210	180	717	310	St	RSCR	11.8	216	
	FL1568-P*	6.8	210	180	717	310	St	RSCR	11.5	217	
	FL1675-P*	7.5	233	200	795	300		OC	RSR	10.8	216
	FL1875-P*	7.5	225	193	768	300		OC	RSR	11.9	211
	FL1875-P*	7.5	255	219	871	300		OC	RSCR	11.9	216
	FL0634-U*	3.4	98	84	335	270	St	RSR	8.3	179	
	FL0739-U*	3.9	114	98	389	270	St	RSR	8.3	179	
	FL1052-U*	5.2	147	126	502	270	St	RSR	8.1	179	
127V	FL1152-U*	5.2	155	133	529	240	St	RSR	9.0	180	
60Hz	FL1262-U*	6.2	173	148	591	320	St	RSR	9.8	195	
	FL1462-U*	6.2	180	154	615	350	St	RSR	10.5	200	
	FL1568-U*	6.8	208	178	710	310	St	RSCR	11.5	216	
	FL1568-U*	6.8	228	196	778	310	St	RSR	10.5	200	
	FL1875-U*	7.5	225	193	768	300		OC	RSR	11.1	216
200V	FL1875-T*	7.5	200	232	172	683	300	OC	IR	11.1	211
50/60Hz	FL2088-T*	8.8	263	290	226	898	300	OC	IR	11.1	211
	FL0634-R*	3.4	98	84	335	270	St	RSR	8.0	179	
	FL0739-R*	3.9	115	99	393	270	St	RSR	8.0	179	
	FL0845-R*	4.5	122	105	417	240	St	RSR	8.7	180	
220V	FL1052-R*	5.2	150	129	512	240	St	RSR	8.9	180	
60Hz	FL1152-R*	5.2	155	133	529	270	St	RSR	8.1	179	
	FL1262-R*	6.2	162	139	553	320	St	RSR	9.8	195	
	FL1462-R*	6.2	207	178	707	300	St	RSR	10.6	196	
	FL1568-R*	6.8	228	196	778	310	St	RSR	10.5	200	
	FL1568-R*	6.8	181	155	618	300	St	RSCR	11.5	216	
	FL1875-R*	7.5	238	204	813	300		OC	RSR	11.1	216
	FL0634-S*	3.4	95	82	324	240	St	RSCR	9.0	180	
	FL0634-S*	3.4	82	70	280	270	St	RSR	7.8	179	
	FL0734-S*	3.4	95	82	326	240	St	RSCR	9.0	180	

Private Picture Copyright: WWW.MBSM.PRO

Mbsm_dot_pro_private_PDF_FL1152-RGTélécharger

Samsung, réfrigérateur, MSA150H-L1A, compresseur, R134A, 220-240 V/50Hz, LBP, 1/6 HP, 1/5 HP, 177 w

Category: compressor

written by www.mbsm.pro | 19 February 2022

Détails rapides

N ° de modèle:	MSA150H-L1A
Capacité de refroidissement:	177 W
Réfrigérant:	R134A
Application:	Réfrigérateur
Tension:	220V 60Hz
Marque déposée:	samsung



Private Picture Copyright: WWW.MBSM.PRO



Private Picture Copyright : WWW.MBSM.PRO

Samsung Reciprocating Compressor est un partenaire mondial qui fournit des fonctionnalités durables et respectueuses de l'environnement pour tous vos besoins de refroidissement. Il existe quatre séries de compresseurs à piston: MAS, NC, MSE, MSV

Modèle	moteur	V-Hz	Kcal / heure	Watt	BTU / heure	Watt	Kcal / Wh	W / W	BTU / Wh	AMP
MSA141C-S1A	PTC-RSIR	115-60	121	140	479	98,3	1,23	1,43	4,87	1,35
MSA141C-S1B	PTC-RSCR	115-60	121	140	479	93,5	1,29	1,50	5,13	0,91
MSA143C-S1B	PTC-RSCR	115-60	121	140	479	91,5	1,32	1,53	5,23	0,91
MSA150C-L1A	PTC-RSIR	115-60	148	172	588	119,8	1,24	1,44	4,90	1,63
MSA151C-L1B	PTC-RSCR	115-60	148	172	588	110,0	1,35	1,56	5,34	1,03
MSA151C-L1G	PTC-RSCR	115-60	148	172	588	105,2	1,41	1,64	5,58	0,96
MSA152C-L1G	PTC-RSCR	115-60	148	172	588	102,2	1,45	1,68	5,74	0,93
MSA160C-L1A	PTC-RSIR	115-60	182	212	723	150,9	1,21	1,40	4,79	2,10
MSA161C-L1A	PTC-RSIR	115-60	182	212	723	148,0	1,23	1,43	4,88	2,06
MSA170C-L1B	PTC-RSCR	115-60	214	249	850	155,8	1,38	1,60	5,46	1,65
MSA171C-L1B	PTC-RSCR	115-60	214	249	850	157,7	1,36	1,58	5,39	1,65
NC1A30DLA	PTC-RSIR	115-60	78	91	309	76,9	1,01	1,18	4,02	1,05
NC1A37DLB	PTC-RSCR	115-60	105	122	418	97,4	1,08	1,26	4,29	0,92
NC1A43DLB	PTC-RSCR	115-60	117	136	464	98,3	1,19	1,38	4,71	0,94
MSA162D-S1G	PTC-RSCR	115-60	182	212	723	129,5	1,41	1,63	5,58	1,39
		127-60	182	212	723	129,5	1,41	1,63	5,58	1,39
NC1A37HLB	PTC-RSCR	220-50	88	102	348	81,8	1,07	1,25	4,25	0,50
		220-60	105	122	418	98,2	1,07	1,25	4,25	0,48
NC1A43HLB	PTC-RSCR	220-50	93	108	367	83,7	1,10	1,28	4,38	0,52
		220-60	117	136	464	105,8	1,10	1,28	4,38	0,49
MSA141H-L1A	PTC-RSIR	220-50	93	109	371	80,8	1,16	1,34	4,59	0,67
		220-60	121	140	479	104,4	1,16	1,34	4,59	0,66

MSA150H-L1A PTC-RSIR	220-50 122	142	483	107,1	1.14	1,32	4,51	0,86
	220-60 148	172	588	130,2	1.14	1,32	4,51	0,81
MSA160H-L1A PTC-RSIR	220-50 147	171	584	132,4	1.11	1,29	4,41	1.12
	220-60 182	212	723	164,0	1.11	1,29	4,41	1,02
MSA161H-L1A PTC-RSIR	220-50 147	171	584	131,5	1.12	1,30	4,44	1.10
	220-60 182	212	723	162,8	1.12	1,30	4,44	1,00
MSA170H-L1B PTC-RSCR	220-50 168	196	669	137,3	1,23	1,43	4,87	0,81
	220-60 214	249	850	174,6	1,23	1,43	4,87	0,72
MSA170H-L1G PTC-RSCR	220-50 168	196	669	124,6	1,35	1,57	5,36	0,73
	220-60 214	249	850	158,5	1,35	1,57	5,36	0,73
MSA171H-L1B PTC-RSCR	220-50 168	196	669	138,3	1,22	1,42	4,83	0,78
	220-60 214	249	850	175,8	1,22	1,42	4,83	0,76
NC1A37BLA PTC-RSIR	220-60 105	122	418	100,3	1,05	1,22	4.16	0,70
MSA162B-L1G PTC-RSCR	220-60 182	212	723	126,6	1,44	1,67	5,71	0,60
NC1A30GLA PTC-RSIR	220-50 66	77	263	69,1	0,96	1.11	3,80	0,59
	220-60 78	91	309	81,3	0,96	1.11	3,80	0,54
MSA151G-L1B PTC-RSCR	220-50 120	139	475	91,5	1,31	1,52	5,19	0,50
	220-60 148	172	588	113,1	1,31	1,52	5,19	0,50
MSA162G-L1B PTC-RSCR	220-50 147	176	599	112,0	1,31	1,53	5,21	0,70
	220-60 182	217	742	138,7	1,31	1,53	5,21	0,67
NC1A37QLB PTC-RSCR	220-50 88	102	348	77,9	1.13	1,31	4,46	0,43
MSA141Q-S1A PTC-RSIR	220-50 93	109	371	80,8	1,16	1,34	4,59	0,67
MSA150Q-L1A PTC-RSIR	220-50 122	142	483	101,3	1,20	1,40	4,77	0,71
	240-50 122	142	483	101,3	1,20	1,40	4,77	0,74
MSA153Q-L1A PTC-RSIR	220-50 122	142	483	108,1	1.13	1,31	4,47	0,78
	240-50 122	142	483	108,1	1.13	1,31	4,47	0,82
MSA160Q-L1A PTC-RSIR	220-50 147	171	584	122,7	1,20	1,39	4,76	0,87
	240-50 147	171	584	122,7	1,20	1,39	4,76	0,91
MSA161Q-L1A PTC-RSIR	220-50 147	171	584	118,8	1,24	1,44	4,91	0,86
	240-50 147	171	584	118,8	1,24	1,44	4,91	0,90
MSA161Q-L1B PTC-RSCR	220-50 147	171	584	113,0	1,30	1,51	5,17	0,65
	240-50 147	171	584	113,0	1,30	1,51	5,17	0,65
MSA162Q-L1G PTC-RSCR	220-50 147	171	584	103,2	1,42	1,66	5,65	0,48
MSA163Q-L1A PTC-RSIR	220-50 147	171	584	130,5	1.13	1,31	4,47	0,94
	240-50 147	171	584	130,5	1.13	1,31	4,47	1,02
MSA170Q-L1B PTC-RSCR	220-50 168	196	669	125,6	1,34	1,56	5,32	0,61
MSA170Q-L1G PTC-RSCR	220-50 168	196	669	119,8	1,41	1,64	5,58	0,58
MSA171Q-L1B PTC-RSCR	220-50 168	196	669	127,6	1,32	1,54	5,24	0,63
NC1A43KLB PTC-RSCR	220-50 93	108	367	81,8	1.13	1,32	4,49	0,46
MSA141K-L1A PTC-RSIR	220-50 93	109	371	83,7	1.12	1,30	4,43	0,65
MSA141K-S1A PTC-RSIR	220-50 93	109	371	80,8	1,16	1,34	4,59	0,67
MSA141K-S1B PTC-RSCR	220-50 93	109	371	76,9	1,22	1,41	4,82	0,44
MSA143K-S1B PTC-RSCR	220-50 93	109	371	75,0	1,25	1,45	4,95	0,45
MSA151K-S1G PTC-RSCR	220-50 122	142	483	99,3	1,23	1,42	4,86	0,57
MSA162K-S1G PTC-RSCR	220-50 147	171	584	113,9	1,29	1,50	5.12	0,62
MSA170K-S1G PTC-RSCR	220-50 168	196	669	128,5	1,31	1,52	5.20	0,73

MSA150E-L1A PTC-RSIR	100-50	122	142	483	109,1	1.12	1,30	4,43	1,88
	100-60	148	172	588	132,6	1.12	1,30	4,43	1,80
MSA160E-L1A PTC-RSIR	100-50	147	171	584	135,4	1,09	1,26	4,31	2,45
	100-60	182	212	723	167,6	1,09	1,26	4,31	2,25
MSA162P-S1B PTC-RSCR	127-60	182	217	742	133,4	1,36	1,59	5,42	1,17

Model	Motor Type	Voltage [V-Hz]	Cooling Capacity			Power Input	Efficiency			Cooling Type
			kcal/Hr	Watt	BTU/Hr		W	EFF	COP	
CD124Q-L1Z2	RSIR	220-50	43	50	171	57	0.75	0.88	2.99	ST
CD130Q-L1Z2	RSIR	220-50	58	67	230	65	0.89	1.04	3.54	ST
CD130Q-S1ZA	RSIR	220-50	58	67	230	74	0.78	0.91	3.11	ST
SD137Q-L1ZB	RSIR	220-50	75	87	298	86	0.87	1.01	3.46	ST
SD137Q-L1UB	RSCR	220-50	75	87	298	80	0.94	1.09	3.72	ST
SD143Q-L1U2	RSCR	220-50	95	110	377	99	0.96	1.12	3.81	ST
MSA143Q-S1Z	RSIR	220-50	96	112	381	83	1.16	1.34	4.59	ST
SD152Q-L1UB	RSCR	220-50	120	140	476	104	1.15	1.34	4.58	ST
MD152Q-L1U2	RSCR	220-50	118	137	468	98	1.2	1.4	4.78	ST
SD162Q-L1UB	RSCR	220-50	146	170	580	125	1.17	1.36	4.64	ST
MK162Q-L1UA	RSCR	220-50	145	169	576	105	1.38	1.61	5.48	ST
MSS162Q-L1U	RSCR	220-50	151	176	599	105	1.44	1.67	5.71	ST
MSA162Q-L1G	RSCR	220-50	151	176	599	111	1.36	1.58	5.4	ST
SK170Q-L1U	RSCR	220-50	168	195	667	141	1.19	1.39	4.73	ST/OC
MSA170Q-L1B	RSCR	220-50	173	201	687	129	1.34	1.56	5.32	ST
MSA170Q-L1G	RSCR	220-50	173	201	687	126	1.37	1.6	5.45	ST
MK172Q-L2UB	RSCR	220-50	176	205	699	129	1.36	1.59	5.42	FC
SK182Q-L2U	RSCR	220-50	203	236	806	164	1.24	1.44	4.91	FC/OC
MK183Q-L2UB	RSCR	220-50	203	236	806	142	1.43	1.66	5.68	FC
SK190Q-L2U	RSCR	220-50	227	264	901	180	1.26	1.47	5.01	FC/OC
MK190Q-L2U	RSCR	220-50	225	262	893	157	1.43	1.67	5.69	FC
SK1A1Q-L2UB	RSCR	220-50	275	320	1092	229	1.2	1.4	4.77	FC
NC1A37QLB	RSCR	220-50	90	105	357	80	1.13	1.31	4.47	ST

Cooling Type	Motor Type	ASHRAE Conditions (LBP)	Unit Conversion Table
FC : Fan cooling	RSIR : Resistance Start Induction Run	Evaporating Temp. : -23.3°C (-10°F)	1 watt = 3.41 Btu/Hr
OC : Oil cooling	RSCR : Resistance Start Capacitor Run	Condensing Temp. : 54.4°C (130°F)	1 watt = 0.86 Kcal/Hr
ST : Static	CSIR : Capacitor Start Induction Run	Gas Superheated to : 32.2°C (90°F)	1 Kcal/Hr = 3.97 Btu/Hr
	CSR : Capacitor Start Capacitor Run	Liquid sub-cooled to : 32.2°C (90°F)	
		Ambient Temp. : 32.2°C (90°F)	

Private Picture Copyright : WWW.MBSM.PRO

Détails rapides

N ° de modèle:	MSA150H-L1A
Capacité de refroidissement:	177 W
Réfrigérant:	R134A
Application:	Réfrigérateur
Tension:	220V 60Hz
Marque déposée:	samsung



Private Picture Copyright : WWW.MBSM.PRO

Tension	Modèle	Type de moteur	Capacité de refroidissement / w (50Hz)	Capacité de refroidissement / w (60Hz)	Entrée / w (50Hz)	Entrée / w (60Hz)	COP (50 Hz)	COP (60 Hz)
200-220v 50Hz 220V 60Hz	MSA141H-L1A	RSIR	112	144	88	103	1,27	1,40
	MSA150H-L1A	RSIR	145	177	110	123	1,32	1,44
	MSA160H-L1A	RSIR	176	217	136	150	1,29	1,45
	MSA171H-L1B	RSCR	201	256	142	161	1,42	1,59
220-240V 50Hz	MSA151G-L1B	RSCR	143	177	94	110	1,52	1,61
220V 60Hz	MSA162G-L1B	RSCR	176	217	115	135	1,5	1,61



Private Picture Copyright : WWW.MBSM.PRO

RATED VOLTAGE	MODEL	MOTOR TYPE	VOLTAGE [V-Hz]	ASHRAE							COOLING TYPE
				COOLING CAPACITY			POWER INPUT	EFFICIENCY			
				kcal/h	Watts	Btu/h		Watts	EFF	COP	
AC 200-220V-50Hz, 220V-60Hz	MSA141H-L1A	RSIR	220-50	96	112	381	83	1.16	1.34	4.59	ST
			220-60	124	144	492	103	1.20	1.40	4.78	
	MSA143H-L1A	RSIR	220-50	95	110	377	85	1.12	1.30	4.43	ST
			220-60	128	149	508	102	1.25	1.46	5.00	
	MSA150H-L1A	RSIR	220-50	125	145	496	110	1.14	1.32	4.51	ST
			220-60	152	177	603	123	1.24	1.44	4.90	
	MSA151H-L1A	RSIR	220-50	128	149	508	107	1.20	1.39	4.75	ST
			220-60	152	177	603	121	1.26	1.46	5.00	
	MSA160H-L1A	RSIR	220-50	151	176	599	136	1.11	1.29	4.41	ST
			220-60	187	217	742	150	1.25	1.45	4.95	
	MSA161H-L1A	RSIR	220-50	151	176	599	135	1.12	1.30	4.44	ST
			220-60	187	217	742	149	1.26	1.46	4.98	
	MSA162H-L1A	RSIR	220-50	152	177	603	141	1.08	1.25	4.28	ST
			220-60	192	223	762	153	1.25	1.46	5.00	
	MSA162H-L1H	RSCR	220-50	152	177	603	110	1.38	1.61	5.50	ST
			220-60	192	223	762	134	1.43	1.67	5.70	
	MSA171H-L1B	RSCR	220-50	173	201	687	142	1.22	1.42	4.83	ST
			220-60	220	256	873	161	1.37	1.59	5.42	

Private Picture Copyright : WWW.MBSM.PRO





Mbsm_dot_pro_private_PDF_SAMSUNG-COMPRESSOR-2020Télécharger

SIKELAN, R600a, QD75YG Réfrigérateur,
Congélateur, Réfrigérateur,
Hermétique, Compresseur, Alternatif
, 1/6 Hp, 130W

Category: compressor

written by www.mbsm.pro | 19 February 2022



Private Picture Copyright : WWW.MBSM.PRO

SIKELAN, R600a, QD75YG Réfrigérateur, Congélateur, Réfrigérateur, Hermétique, Compresseur, Alternatif ,1/6 Hp, 130W

Super Cool ,BA53LB (BA53), LBP, R12 , 1/6 Hp , 220-240v 50Hz

Category: Technologie,Tester ok
written by www.mbsm.pro | 19 February 2022



Private Picture Copyright : WWW.MBSM.PRO

Super Cool ,BA53LB (BA53), LBP, R12 , 1/6 Hp , 220-240v 50Hz

QD43 , 1/6 Hp , 220V 50/60HZ , R12 ,RRIR

Category: Technologie,Tester ok
written by www.mbsm.pro | 19 February 2022

نوع المحرك	نوع التبريد	الحالي (A)	C.O.P	مخلفات الطاقة (W)	تبريد سعة (W)	الإزاحة (سم)	HP	نموذج	سلسلة
RSIR	ST	1.05	1.07	112	120	4.3	-1/6	QD43	220V سلسلة QD 50/60HZ
RSIR	ST	1.25	1.07	127	136	5.3	1/6	QD53	
RSIR	ST	1.35	1.02	142	145	5.9	+ 1/6	QD59	
RSIR	ST	1.4	1.05	152	160	7.0	1/5	QD70	
RSIR	ST / OC	1.5	1.12	161	180	صحة	1/4	QD90	
RSIR	ST / OC	1.7	1.12	185	207	9.8	+ 1/4	QD98	
RSIR	ST / OC	1.85	1.12	237	265	12.0	1/3	QD120	
RSIR	ST / OC	1.95	1.16	279	324	14.2	3/8	QD142	
RSIR	ST / OC	2.05	1.04	329	375	16.7	1/2	QD167	
RSIR	ST	1.02	1.05	111	117	4.3	-1/6	QD43M	
RSIR	ST	1.23	1.07	125	134	5.3	1/6	QD53M	
RSIR	ST	1.28	1.05	135	142	5.9	+ 1/6	QD59M	
RSIR	ST	1.32	1.05	151	158	7.0	1/5	QD70M	
	ST / OC								

Private Picture Copyright : WWW.MBSM.PRO

QD43 , 1/6 Hp , 220V 50/60HZ , R12 , RRIR