

# Mbsm.pro, Huaguang, EKZ70L, Compressor, 120 w, 1/6 hp, 1bp

Category: compressor

written by [www.mbsm.pro](http://www.mbsm.pro) | 6 June 2023

---



Private Picture Copyright : [WWW.MBSM.PRO](http://WWW.MBSM.PRO)

Mbsm.pro, Huaguang, EKZ70L, Compressor, 120 w, 1/6 hp, 1bp

---

# Mbsm.pro, Tecumseh, Refrigerations, Compressor, Thk 1352 Ycf, Thk1352Ycf, 1/6 hp, R134a

Category: compressor

written by [www.mbsm.pro](http://www.mbsm.pro) | 6 June 2023



Private Picture Copyright : [WWW.MBSM.PRO](http://WWW.MBSM.PRO)

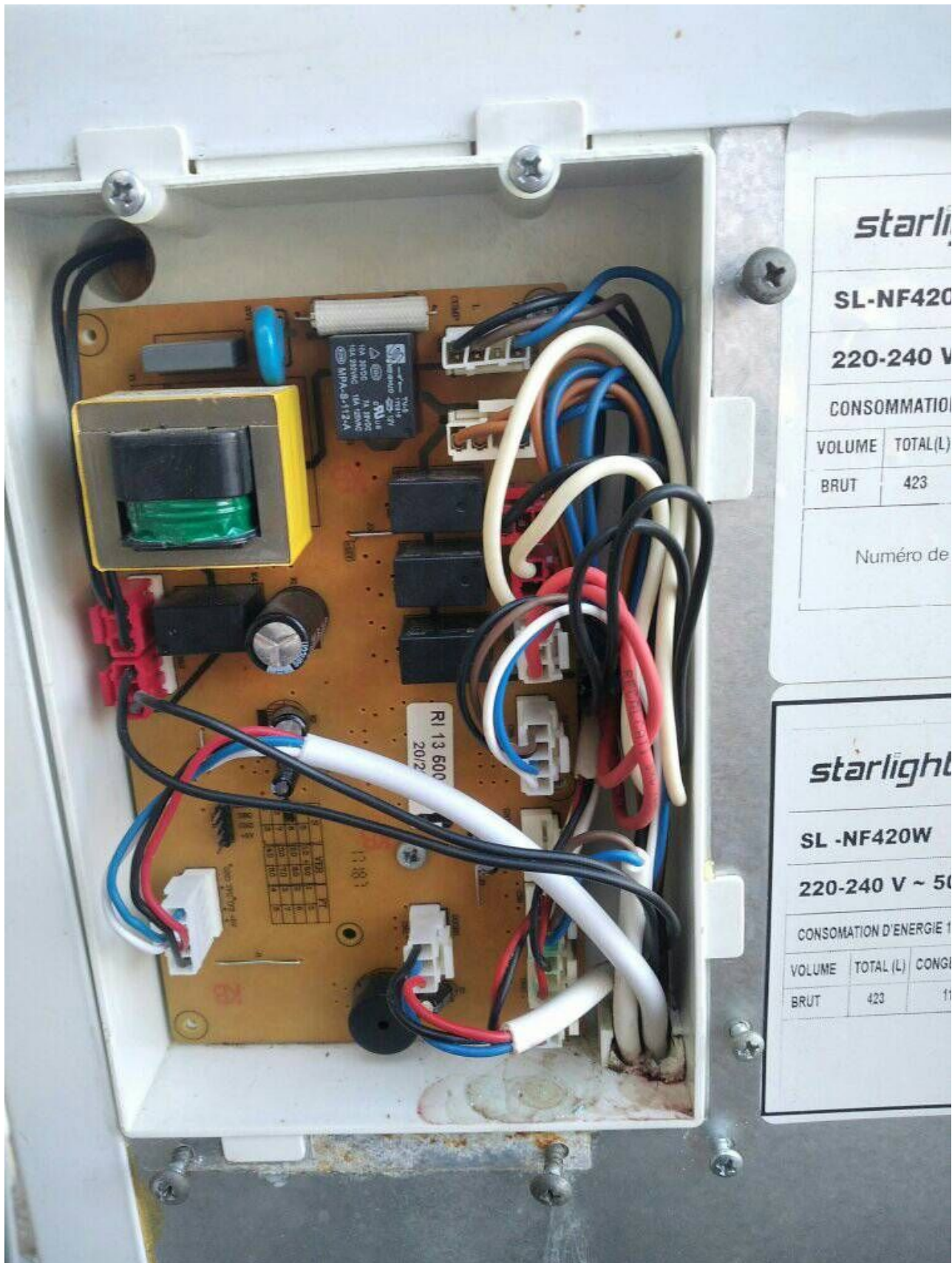
Mbsm.pro, Tecumseh, Refrigerations, Compressor, Thk 1352 Ycf, Thk1352Ycf, 1/6 hp, R134a

---

## Sl-nf420w

Category: Refrigerator

written by [www.mbsm.pro](http://www.mbsm.pro) | 6 June 2023



**starlight**  
**SL-NF420**  
**220-240 V**  
**CONSOMMATION**

VOLUME	TOTAL(L)
BRUT	423

Numéro de

**starlight**  
**SL -NF420W**  
**220-240 V ~ 50**  
**CONSOMMATION D'ENERGIE**

VOLUME	TOTAL (L)	CONG
BRUT	423	11

Private Picture Copyright : [WWW.MBSM.PRO](http://WWW.MBSM.PRO)

Mbsm.pro, refrigerator, 420 L, Starlight, SL-nf420w, 115 w, compressor, 1/6 hp, r134a, 100g

Mbsm.pro, Compressor, Qd52, 1/6 hp ,  
Mini, R134a, 220-240/50, 128 w, 437  
btu

Category: compressor

written by www.mbsm.pro | 6 June 2023



Mbsm.pro, Compressor, Qd52, 1/6 hp , Mini, R134a, 220-240/50, 128 w, 437 btu

---

Mbsm.pro, compressor, d57c13rax5, 1/6

# hp, r134a, Panasonic, Reciprocating, DxxCxxRAW5 series,

Category: compressor

written by [www.mbsm.pro](http://www.mbsm.pro) | 6 June 2023



Private Picture Copyright : [WWW.MBSM.PRO](http://WWW.MBSM.PRO)

Mbsm.pro, compressor, d57c13rax5, 1/6 hp, r134a, Panasonic, Reciprocating, DxxCxxRAW5 series,

---

## Mbsm.pro, Compressor, Embraco, Fractional, Domestic, Compressor Data, EMU45HSC, 1/6 hp, lbp

Category: compressor

written by rober us | 6 June 2023



Private Picture Copyright : WWW.MBSM.PRO

# Embraco Fractional Domestic Compressor Data

## Embraco/Embraco R134a series EMU45HSC

Wholesale and Retail Embraco/Embraco Compressor, Embraco/Embraco Piston Compressor Model: emu45hsc, Refrigerant: R134a, Supply Voltage: 220-240V, 50-60Hz, Horsepower: 1/6 HP, Provide Embraco / Embraco emu45hsc models, specifications, parameters, pictures, prices and other data. Embraco, a company focused on refrigeration solutions, is the leader in the hermetic compressor market

Product model: EMU45HSC

Refrigerant: R134a

Power frequency: 50/60Hz

Power supply voltage: 220-240V

Product horsepower: 1/6 HP

Model	Refrigerator	Voltage	Frequency / Rotation	Application	HP	Efficiency (Kcal/wh)	Capacity (Kcal/h)	Displacement (cm <sup>3</sup> )	Type of oil	Type of motor	Starting torque	Type of test
EMI30HER	R-134a	115-127 V 60 Hz 1 ~	60 Hz	LBP	1/10	0,92	69	3	IS022	RSIR-CSIR	LST	ASHRAE32
EMIE30HJR	R-134a	115-127 V 60 Hz 1 ~	60 Hz	LBP	1/10	1,03	76	2,83	IS010	RSIR	LST	ASHRAE32
EMI30HER	R-134a	115-127 V 60 Hz 1 ~	60 Hz	LBP	1/10	1,03	77	3	IS010	RSIR-CSIR	LST	ASHRAE32

EM30HNR	R-134a	115-127 V 60 Hz 1 ~	60 Hz	LBP	1/10	0,93	77	3	IS022	RSIR-CSIR	LST	ASHRAE32
EM30HHR	R-134a	115 V 60 Hz 1 ~	60 Hz	LBP	1/10	0,81	78	3	IS022	CSIR	LST	ASHRAE32
EM30HHR	R-134a	115 V 60 Hz 1 ~	60 Hz	LBP	1/10	0,81	78	3	IS022	RSIR	LST	ASHRAE32
EM30HHR	R-134a	115 V 60 Hz 1 ~	60 Hz	LBP	1/10	0,81	78	3	IS022	RSIR-CSIR	LST	ASHRAE32
EMT30HSC	R-134a	115 V 60 Hz 1 ~	60 Hz	LBP	1/10	1,08	78	3	IS010	RSCR – 12 μF	LST	ASHRAE32
EMI28HER	R-134a	115-127 V 60 Hz 1 ~	60 Hz	LBP	1/10	1,01	81	3	IS010	RSIR-CSIR	LST	ASHRAE32
EMU30HSC	R-134a	115 V 60 Hz 1 ~	60 Hz	LBP	1/10	1,21	83	3	IS010	RSCR – 12 μF	LST	ASHRAE32
EMI40HNR	R-134a	115-127 V 60 Hz 1 ~	60 Hz	LBP	1/10	1,05	94	3,77	IS010	RSIR-CSIR	LST	ASHRAE32
EMI45HER	R-134a	115-127 V 60 Hz 1 ~	60 Hz	LBP	1/8	1,13	106	3,77	IS010	RSIR	LST	ASHRAE32
EMI45HER	R-134a	115-127 V 60 Hz 1 ~	60 Hz	LBP	1/8	1,08	106	3,77	IS022	RSIR	LST	ASHRAE32
EM45HNR	R-134a	115-127 V 60 Hz 1 ~	60 Hz	LBP	1/8	1	106	3,77	IS010	RSIR-CSIR	LST	ASHRAE32
EM45HNR	R-134a	115-127 V 60 Hz 1 ~	60 Hz	LBP	1/8	0,98	106	3,77	IS022	RSIR-CSIR	LST	ASHRAE32
EMU45HEP	R-134a	100 V 50-60 Hz 1 ~	60 Hz	LBP	1/6	1,14	110	3,77	IS010	RSIR	LST	ASHRAE32
EMU45HER	R-134a	115-127 V 60 Hz 1 ~	60 Hz	LBP	1/8	1,19	113	3,77	IS07	RSIR	LST	ASHRAE32
EMU45HSC	R-134a	115-127 V 60 Hz 1 ~	60 Hz	LBP	1/6	1,22	113	3,77	IS010	RSCR – 20 μF	LST	ASHRAE32
EMU45HSC	R-134a	115-127 V 60 Hz 1 ~	60 Hz	LBP	1/6	1,25	113	3,77	IS010	RSCR – 15 μF	LST	ASHRAE32
EMU45HSC	R-134a	115-127 V 60 Hz 1 ~	60 Hz	LBP	1/6	1,25	113	3,77	IS010	RSCR – 12 μF	LST	ASHRAE32
EMI30HER	R-134a	115-127 V 60 Hz 1 ~	60 Hz	LBP	1/10	0,92	69	3	IS022	RSIR-CSIR	LST	ASHRAE32
EMIE30HJR	R-134a	115-127 V 60 Hz 1 ~	60 Hz	LBP	1/10	1,03	76	2,83	IS010	RSIR	LST	ASHRAE32
EMI30HER	R-134a	115-127 V 60 Hz 1 ~	60 Hz	LBP	1/10	1,03	77	3	IS010	RSIR-CSIR	LST	ASHRAE32
EM30HNR	R-134a	115-127 V 60 Hz 1 ~	60 Hz	LBP	1/10	0,93	77	3	IS022	RSIR-CSIR	LST	ASHRAE32
EM30HHR	R-134a	115 V 60 Hz 1 ~	60 Hz	LBP	1/10	0,81	78	3	IS022	CSIR	LST	ASHRAE32
EM30HHR	R-134a	115 V 60 Hz 1 ~	60 Hz	LBP	1/10	0,81	78	3	IS022	RSIR	LST	ASHRAE32
EM30HHR	R-134a	115 V 60 Hz 1 ~	60 Hz	LBP	1/10	0,81	78	3	IS022	RSIR-CSIR	LST	ASHRAE32
EMT30HSC	R-134a	115 V 60 Hz 1 ~	60 Hz	LBP	1/10	1,08	78	3	IS010	RSCR – 12 μF	LST	ASHRAE32
EMI28HER	R-134a	115-127 V 60 Hz 1 ~	60 Hz	LBP	1/10	1,01	81	3	IS010	RSIR-CSIR	LST	ASHRAE32
EMU30HSC	R-134a	115 V 60 Hz 1 ~	60 Hz	LBP	1/10	1,21	83	3	IS010	RSCR – 12 μF	LST	ASHRAE32

EMI40HNR	R-134a	115-127 V 60 Hz 1 ~	60 Hz	LBP	1/10	1,05	94	3,77	IS010	RSIR-CSIR	LST	ASHRAE32
EMI45HER	R-134a	115-127 V 60 Hz 1 ~	60 Hz	LBP	1/8	1,13	106	3,77	IS010	RSIR	LST	ASHRAE32
EMI45HER	R-134a	115-127 V 60 Hz 1 ~	60 Hz	LBP	1/8	1,08	106	3,77	IS022	RSIR	LST	ASHRAE32
EM45HNR	R-134a	115-127 V 60 Hz 1 ~	60 Hz	LBP	1/8	1	106	3,77	IS010	RSIR-CSIR	LST	ASHRAE32
EM45HNR	R-134a	115-127 V 60 Hz 1 ~	60 Hz	LBP	1/8	0,98	106	3,77	IS022	RSIR-CSIR	LST	ASHRAE32
EMU45HEP	R-134a	100 V 50-60 Hz 1 ~	60 Hz	LBP	1/6	1,14	110	3,77	IS010	RSIR	LST	ASHRAE32
EMU45HER	R-134a	115-127 V 60 Hz 1 ~	60 Hz	LBP	1/8	1,19	113	3,77	IS07	RSIR	LST	ASHRAE32
EMU45HSC	R-134a	115-127 V 60 Hz 1 ~	60 Hz	LBP	1/6	1,22	113	3,77	IS010	RSCR – 20 μF	LST	ASHRAE32
EMU45HSC	R-134a	115-127 V 60 Hz 1 ~	60 Hz	LBP	1/6	1,25	113	3,77	IS010	RSCR – 15 μF	LST	ASHRAE32
EMU45HSC	R-134a	115-127 V 60 Hz 1 ~	60 Hz	LBP	1/6	1,25	113	3,77	IS010	RSCR – 12 μF	LST	ASHRAE32
EMY45HER	R-134a	115-127 V 60 Hz 1 ~	60 Hz	LBP	1/6	1,22	115	3,77	IS010	RSIR	LST	ASHRAE32
EMY45HSC	R-134a	115-127 V 60 Hz 1 ~	60 Hz	LBP	1/8	1,33	115	3,77	IS010	RSCR – 12 μF	LST	ASHRAE32
EM2U50HLP	R-134a	115-127 V 60 Hz 1 ~	60 Hz	LBP	1/6	1,2	126	4,5	IS010	RSIR	LST	ASHRAE32
EM55HNR	R-134a	115-127 V 60 Hz 1 ~	60 Hz	LBP	1/6	1,02	129	4,6	IS022	RSIR-CSIR	LST	ASHRAE32
EM55HNX	R-134a	115-127 V 60 Hz 1 ~	60 Hz	LBP	1/6	1,01	129	4,6	IS022	CSIR	HST	ASHRAE32
EMI55HER	R-134a	115-127 V 60 Hz 1 ~	60 Hz	LBP	1/6	1,12	129	4,6	IS022	RSIR-CSIR	LST	ASHRAE32
EM2Y50HLT	R-134a	115-127 V 60 Hz 1 ~	60 Hz	LBP	1/6	1,42	130	4,5	IS010	RSCR – 12 μF	LST	ASHRAE32
EM2Y50HLT	R-134a	115-127 V 60 Hz 1 ~	60 Hz	LBP	1/6	1,42	130	4,5	IS010	RSCR – 15 μF	LST	ASHRAE32
EM3U50HLP	R-134a	115-127 V 60 Hz 1 ~	60 Hz	LBP	1/5	1,35	140	4,5	IS010	RSIR	LST	ASHRAE32
EMI60HEP	R-134a	100 V 50-60 Hz 1 ~	60 Hz	LBP	1/6	1,09	141	4,99	IS022	RSIR	LST	ASHRAE32
EMI60HER	R-134a	115-127 V 60 Hz 1 ~	60 Hz	LBP	1/6	1,06	144	4,99	IS022	RSIR-CSIR	LST	ASHRAE32
EMI60HEP	R-134a	100 V 50-60 Hz 1 ~	60 Hz	LBP	1/6	1,14	144	4,99	IS010	RSIR	LST	ASHRAE32
NEK2116Z	R-134a	115 V 60 Hz 1~	60 Hz	LBP	1/5	0,79	147	7,37	IS022	CSIR	HST	ARI4
EMU60HSC	R-134a	115-127 V 60 Hz 1 ~	60 Hz	LBP	1/4	1,25	149	4,99	IS010	RSCR – 12 μF	LST	ASHRAE32
EGD60HLC	R-134a	115-127 V 60 Hz 1 ~	60 Hz	LBP	1/5	1,5	149	5,17	IS010	RSCR – 12 μF	LST	ASHRAE32
EGD60HLC	R-134a	115-127 V 60 Hz 1 ~	60 Hz	LBP	1/5	1,54	149	5,17	IS010	RSCR – 12 μF	LST	ASHRAE32
EGZS60HLP	R-134a	115-127 V 60 Hz 1 ~	60 Hz	LBP	1/5	1,46	150	5,09	IS010	RSCR – 12 μF	LST	ASHRAE32

EGZS60HLP	R-134a	115-127 V 60 Hz 1 ~	60 Hz	LBP	1/5	1,46	150	5,09	IS010	RSCR – 15 μF	LST	ASHRAE32
EGZS60HLP	R-134a	115-127 V 60 Hz 1 ~	60 Hz	LBP	1/5	1,46	150	5,09	IS010	RSCR – 20 μF	LST	ASHRAE32
EMY60HSC	R-134a	115-127 V 60 Hz 1 ~	60 Hz	LBP	1/6	1,36	152	4,99	IS010	RSCR – 12 μF	LST	ASHRAE32
EMYS60HEP	R-134a	115-127 V 60 Hz 1 ~	60 Hz	LBP	1/5+	1,29	153	5,19	IS010	RSCR – 12 μF	LST	ASHRAE32
EMY60HER	R-134a	115-127 V 60 Hz 1 ~	60 Hz	LBP	1/6	1,27	154	4,99	IS010	RSIR	LST	ASHRAE32
EMY60HSC	R-134a	115-127 V 60 Hz 1 ~	60 Hz	LBP	1/6	1,34	154	4,99	IS010	RSCR – 12 μF	LST	ASHRAE32
EGZS60HLP	R-134a	115-127 V 60 Hz 1 ~	60 Hz	LBP	1/5	1,48	154	5,09	IS010	RSCR – 12 μF	LST	ASHRAE32
EGZS60HLP	R-134a	115-127 V 60 Hz 1 ~	60 Hz	LBP	1/5	1,48	154	5,09	IS010	RSCR – 15 μF	LST	ASHRAE32
EGZS60HLP	R-134a	115-127 V 60 Hz 1 ~	60 Hz	LBP	1/5	1,48	154	5,09	IS010	RSCR – 20 μF	LST	ASHRAE32
EGZS60HLP	R-134a	115-127 V 60 Hz 1 ~	60 Hz	LBP	1/5	1,51	154	5,09	IS010	RSCR – 12 μF	LST	ASHRAE32
EGZS60HLP	R-134a	115-127 V 60 Hz 1 ~	60 Hz	LBP	1/5	1,51	154	5,09	IS010	RSCR – 15 μF	LST	ASHRAE32
EGZS60HLP	R-134a	115-127 V 60 Hz 1 ~	60 Hz	LBP	1/5	1,51	154	5,09	IS010	RSCR – 20 μF	LST	ASHRAE32
EGZS60HLP	R-134a	115-127 V 60 Hz 1 ~	60 Hz	LBP	1/5	1,52	154	5,09	IS07	RSCR – 12 μF	LST	ASHRAE32
EGZS60HLP	R-134a	115-127 V 60 Hz 1 ~	60 Hz	LBP	1/5	1,52	154	5,09	IS07	RSCR – 15 μF	LST	ASHRAE32
EGZS60HLP	R-134a	115-127 V 60 Hz 1 ~	60 Hz	LBP	1/5	1,52	154	5,09	IS07	RSCR – 20 μF	LST	ASHRAE32
EGX60HLC	R-134a	115-127 V 60 Hz 1 ~	60 Hz	LBP	1/5	1,53	154	5,09	IS010	RSCR – 12 μF	LST	ASHRAE32
ONE 60HLP	R-134a	115-127 V 60 Hz 1 ~	60 Hz	LBP	1/5	1,4	154	5,09	IS010	RSIR	LST	ASHRAE32
ONE 60HLP	R-134a	115-127 V 60 Hz 1 ~	60 Hz	LBP	1/5	1,41	154	5,09	IS07	RSIR	LST	ASHRAE32
FF7,5HBK	R-134a	115 V 60 Hz 1	60 Hz	LBP	1/5+	0,94	159	6,92	IS022	RSIR-CSIR	LST	ASHRAE32
EM2U60HLP	R-134a	115-127 V 60 Hz 1 ~	60 Hz	LBP	1/5	1,32	162	5,54	IS010	RSCR – 12 μF	LST	ASHRAE32
EM2U60HLP	R-134a	115-127 V 60 Hz 1 ~	60 Hz	LBP	1/5	1,26	162	5,54	IS010	RSIR	LST	ASHRAE32
EMH60HER	R-134a	115-127 V 60 Hz 1 ~	60 Hz	LBP	1/4	1,27	163	5,19	IS07	RSIR	LST	ASHRAE32
EM3D60HLT	R-134a	115-127 V 60 Hz 1 ~	60 Hz	LBP	1/4	1,58	163	5,19	IS010	RSCR – 12 μF	LST	ASHRAE32
EM3D60HLT	R-134a	115-127 V 60 Hz 1 ~	60 Hz	LBP	1/4	1,58	163	5,19	IS010	RSCR – 15 μF	LST	ASHRAE32
EM65HNR	R-134a	115-127 V 60 Hz 1 ~	60 Hz	LBP	1/6+	0,99	164	5,54	IS010	RSIR-CSIR	LST	ASHRAE32
EM65HNR	R-134a	115-127 V 60 Hz 1 ~	60 Hz	LBP	1/6+	0,98	164	5,54	IS022	RSIR-CSIR	LST	ASHRAE32
EM2Y60HLP	R-134a	115-127 V 60 Hz 1 ~	60 Hz	LBP	1/4	1,44	165	5,54	IS010	RSCR – 12 μF	LST	ASHRAE32

EGD70HLC	R-134a	115-127 V 60 Hz 1 ~	60 Hz	LBP	1/4	1,56	169	5,64	IS010	RSCR – 12 μF	LST	ASHRAE32
EM2Z60HLT	R-134a	115-127 V 60 Hz 1 ~	60 Hz	LBP	1/5	1,48	170	5,54	IS010	RSCR – 12 μF	LST	ASHRAE32
EM2Z60HLT	R-134a	115-127 V 60 Hz 1 ~	60 Hz	LBP	1/5	1,48	170	5,54	IS010	RSCR – 15 μF	LST	ASHRAE32
FFV6HAK	R-134a	115-127 V 60 Hz 1 ~	60 Hz	LBP	1/5	1,19	170	6,23	IS022	RSIR-CSIR	LST	ASHRAE32
FEE6HAK	R-134a	115-127 V 60 Hz 1 ~	60 Hz	LBP	1/5	1,07	171	6,23	IS022	RSIR-CSIR	LST	ASHRAE32
EMY70HER	R-134a	115-127 V 60 Hz 1 ~	60 Hz	LBP	1/5	1,21	171	5,72	IS010	RSIR-CSIR	LST	ASHRAE32
EMYE70HEP	R-134a	115-127 V 60 Hz 1 ~	60 Hz	LBP	1/5	1,31	173	5,96	IS010	RSIR	LST	ASHRAE32
EMYE70HEP	R-134a	115-127 V 60 Hz 1 ~	60 Hz	LBP	1/5	1,37	173	5,96	IS010	RSIR-RSCR – 12 μF	LST	ASHRAE32
EMYE70HEP	R-134a	115-127 V 60 Hz 1 ~	60 Hz	LBP	1/5	1,37	173	5,96	IS010	RSIR-RSCR – 15 μF	LST	ASHRAE32
EMYE70HEP	R-134a	115-127 V 60 Hz 1 ~	60 Hz	LBP	1/5	1,3	173	5,96	IS010	RSIR	LST	ASHRAE32
EGAS70HLR	R-134a	115-127 V 60 Hz 1 ~	60 Hz	LBP	1/5+	1,29	174	5,56	IS010	RSIR	LST	ASHRAE32
FGS70HA	R-134a	100 V 50-60 Hz 1 ~	60 Hz	LBP	1/5+	1,32	174	6,36	IS010	RSCR – 20 μF	LST	ASHRAE32
EMX70HSC	R-134a	115-127 V 60 Hz 1 ~	60 Hz	LBP	1/5+	1,44	175	5,96	IS010	RSCR – 12 μF	LST	ASHRAE32
EGX70HLC	R-134a	115-127 V 60 Hz 1 ~	60 Hz	LBP	1/4	1,55	175	5,56	IS010	RSCR – 15 μF	LST	ASHRAE32
EGX70HLC	R-134a	115-127 V 60 Hz 1 ~	60 Hz	LBP	1/4	1,56	175	5,56	IS010	RSCR – 12 μF	LST	ASHRAE32
EGX70HLC	R-134a	115-127 V 60 Hz 1 ~	60 Hz	LBP	1/4	1,57	175	5,56	IS07	RSCR – 15 μF	LST	ASHRAE32
EGX70HLC	R-134a	115-127 V 60 Hz 1 ~	60 Hz	LBP	1/4	1,58	175	5,56	IS07	RSCR – 12 μF	LST	ASHRAE32
EGZS70HLP	R-134a	115-127 V 60 Hz 1 ~	60 Hz	LBP	1/4	1,54	175	5,56	IS07	RSCR – 12 μF	LST	ASHRAE32
EGZS70HLP	R-134a	115-127 V 60 Hz 1 ~	60 Hz	LBP	1/4	1,54	175	5,56	IS07	RSCR – 15 μF	LST	ASHRAE32
EGZS70HLP	R-134a	115-127 V 60 Hz 1 ~	60 Hz	LBP	1/4	1,54	175	5,56	IS07	RSCR – 20 μF	LST	ASHRAE32
ONE 70HLP	R-134a	115-127 V 60 Hz 1 ~	60 Hz	LBP	1/4	1,43	175	5,56	IS010	RSIR	LST	ASHRAE32
ONE 70HLP	R-134a	115-127 V 60 Hz 1 ~	60 Hz	LBP	1/4	1,44	175	5,56	IS07	RSIR	LST	ASHRAE32
ONE 70HLP	R-134a	115-127 V 60 Hz 1 ~	60 Hz	LBP	1/4	1,39	176	5,56	IS010	RSIR	LST	ASHRAE32
FF8,5HBK	R-134a	115-127 V 60 Hz 1 ~	60 Hz	LBP	1/4	0,94	186	7,95	IS022	RSIR-CSIR	LST	ASHRAE32
FFU70HAK	R-134a	115-127 V 60 Hz 1 ~	60 Hz	LBP	1/4	1,29	189	6,36	IS010	RSIR-CSIR	LST	ASHRAE32
EM3Z70HLT	R-134a	115-127 V 60 Hz 1 ~	60 Hz	LBP	1/4+	1,5	189	5,96	IS010	RSCR – 12 μF	LST	ASHRAE32
EM3Z70HLT	R-134a	115-127 V 60 Hz 1 ~	60 Hz	LBP	1/4+	1,5	189	5,96	IS010	RSCR – 15 μF	LST	ASHRAE32

EM3D70HLT	R-134a	115-127 V 60 Hz 1 ~	60 Hz	LBP	1/4+	1,57	193	5,96	IS010	RSCR - 12 μF	LST	ASHRAE32
EM3D70HLT	R-134a	115-127 V 60 Hz 1 ~	60 Hz	LBP	1/4+	1,57	193	5,96	IS010	RSCR - 15 μF	LST	ASHRAE32
FFI7,5HAK	R-134a	115 V 60 Hz 1	60 Hz	LBP	1/4	1,16	193	6,76	IS022	RSIR-CSIR	LST	ASHRAE32
EM2U80HLP	R-134a	115-127 V 60 Hz 1 ~	60 Hz	LBP	1/4	1,32	197	6,76	IS010	RSIR	LST	ASHRAE32
EM2U80HLP	R-134a	115-127 V 60 Hz 1 ~	60 Hz	LBP	1/4	1,32	197	6,76	IS010	RSCR - 12 μF	LST	ASHRAE32
EM2U80HLP	R-134a	115-127 V 60 Hz 1 ~	60 Hz	LBP	1/4	1,32	197	6,76	IS010	RSCR - 15 μF	LST	ASHRAE32
EM2U80HLP	R-134a	115-127 V 60 Hz 1 ~	60 Hz	LBP	1/4	1,46	199	6,76	IS010	RSCR - 12 μF	LST	ASHRAE32
EM2U80HLP	R-134a	115-127 V 60 Hz 1 ~	60 Hz	LBP	1/4	1,46	199	6,76	IS010	RSCR - 15 μF	LST	ASHRAE32
EM2U80HLP	R-134a	115-127 V 60 Hz 1 ~	60 Hz	LBP	1/4	1,42	199	6,76	IS010	RSIR	LST	ASHRAE32
EGUS80HLP	R-134a	115-127 V 60 Hz 1 ~	60 Hz	LBP	1/4	1,38	203	6,36	IS010	RSIR	LST	ASHRAE32
EGD80HLC	R-134a	115-127 V 60 Hz 1 ~	60 Hz	LBP	1/4	1,59	204	6,44	IS010	RSCR - 12 μF	LST	ASHRAE32
EGAS80HLP	R-134a	115-127 V 60 Hz 1 ~	60 Hz	LBP	1/4	1,24	204	6,44	IS010	RSIR	LST	ASHRAE32
EGAS80HLR	R-134a	115-127 V 60 Hz 1 ~	60 Hz	LBP	1/4+	1,32	205	6,36	IS010	RSIR-CSIR	LST	ASHRAE32
EGX80HLC	R-134a	115-127 V 60 Hz 1 ~	60 Hz	LBP	1/4	1,55	205	6,36	IS010	RSCR - 12 μF	LST	ASHRAE32
EM2Z80HLT	R-134a	115-127 V 60 Hz 1 ~	60 Hz	LBP	1/4	1,51	205	6,76	IS010	RSCR - 12 μF	LST	ASHRAE32
EM2Z80HLT	R-134a	115-127 V 60 Hz 1 ~	60 Hz	LBP	1/4	1,51	205	6,76	IS010	RSCR - 15 μF	LST	ASHRAE32
ONE 80HLP	R-134a	115-127 V 60 Hz 1 ~	60 Hz	LBP	1/4	1,44	207	6,36	IS010	RSIR	LST	ASHRAE32
EGX80HLC	R-134a	115-127 V 60 Hz 1 ~	60 Hz	LBP	1/4	1,55	207	6,36	IS010	RSCR - 12 μF	LST	ASHRAE32
EGX80HLC	R-134a	115-127 V 60 Hz 1 ~	60 Hz	LBP	1/4	1,57	207	6,36	IS010	RSCR - 15 μF	LST	ASHRAE32
EGX80HLC	R-134a	115-127 V 60 Hz 1 ~	60 Hz	LBP	1/4	1,59	207	6,36	IS07	RSCR - 15 μF	LST	ASHRAE32
EGX80HLC	R-134a	115-127 V 60 Hz 1 ~	60 Hz	LBP	1/4	1,59	207	6,36	IS07	RSCR - 12 μF	LST	ASHRAE32
FFI8,5HAK	R-134a	115-127 V 60 Hz 1 ~	60 Hz	LBP	1/4+	1,18	209	7,15	IS022	RSIR-CSIR	LST	ASHRAE32
FF10HBX	R-134a	115 V 60 Hz 1	60 Hz	LBP	1/4+	0,98	212	9,04	IS022	CSIR	HST	ASHRAE32
EGUS90HLP	R-134a	115-127 V 60 Hz 1 ~	60 Hz	LBP	1/4+	1,42	234	7,15	IS010	RSIR	LST	ASHRAE32
ONE 90HLP	R-134a	115-127 V 60 Hz 1 ~	60 Hz	LBP	1/4+	1,45	236	7,15	IS010	RSIR	LST	ASHRAE32
EGAS90HLR	R-134a	115-127 V 60 Hz 1 ~	60 Hz	LBP	1/3-	1,37	236	7,15	IS010	RSIR-CSIR	LST	ASHRAE32
EGX90HLC	R-134a	115-127 V 60 Hz 1 ~	60 Hz	LBP	1/4+	1,58	239	7,15	IS07	RSCR - 15 μF	LST	ASHRAE32

EGX90HLC	R-134a	115-127 V 60 Hz 1 ~	60 Hz	LBP	1/4+	1,58	239	7,15	IS07	RSCR – 12 μF	LST	ASHRAE32
EGZS90HLP	R-134a	115-127 V 60 Hz 1 ~	60 Hz	LBP	1/4+	1,54	239	7,15	IS07	RSCR – 12 μF	LST	ASHRAE32

Embraco/Embraco piston compression emu45hsc detailed parameters:

Refrigerant:	R-134a	Displacement (cm <sup>3</sup> ):	3.77
Voltage:	220-240V 50-60Hz 1~	Lubricant category:	IS010
frequency(Hz):	50	Lubricating oil volume (ml):	160
application:	LBP	motor model:	RSCR
horsepower:	1/6	Starting torque:	LST
efficiency:	1.40	Test type:	ASHRAE32
Cooling capacity:	109		

**Number: 513308034 513308056 513308063**

Appearance

	shape	material	Dimensions (mm)
suction port	Slanted	Copper	6.50
exhaust port	Straight	Copper	4.94
Process interface	Straight	Copper	6.50
Oil cooler:			
Floor:	Universal EG/F/AMEM version 2		
bracket:	No		
Weight(kg):	7.74		

application

Maximum ambient temperature (°C):	43
Expansion device:	Capillary
cool down:	Straight cold
Air Velocity:	

mechanical data

Bill of Materials:	513308034
Starting torque:	low starting torque
Bore (mm):	19.00
Stroke(mm):	6.65
Weight(kg):	7.74

digital data

motor model:	RSCR
Wireset Resistance (25°C) – Startup (25°C) – Startup:	19.00
Cordset Resistance (26°C) – Operating (25°C) – Operating:	27.10

**Check point – condensing temperature 54.4 °C**

Evaporation temperature	Cooling capacity +/-5%			Energy consumption +/-5%	Now energy efficient +/-5%	Energy efficiency +/-7%		
	(kcal/h)	(IN)	(Btu/h)	(IN)	(A)	(kcal/Wh)	(W/W)	(Btu/Wh)
-23.3	94	109	372	75	0.36	1.25	1.46	4.98

Condensing temperature 45°C

Evaporation temperature	Cooling capacity +/-5%			Energy consumption +/-5%	Now energy efficient +/-5%	Gas flow rate +/-5%	Energy efficiency +/-7%		
	(kcal/h)	(IN)	(Btu/h)	(IN)	(A)	(kg/h)	(kcal/Wh)	(W/W)	(Btu/Wh)
-35	49	56	193	57	0.28	1.09	0.85	0.99	3.38
-30	74	86	293	64	0.30	1.66	1.16	1.35	4.60
-25	98	114	390	71	0.34	2.21	1.39	1.61	5.50
-20	125	145	496	79	0.38	2.82	1.59	1.84	6.29
-15	157	183	623	87	0.42	3.56	1.80	2.09	7.13
-10	197	229	783	97	0.47	4.49	2.04	2.37	8.10

Condensing temperature 55°C

Evaporation temperature	Cooling capacity +/-5%			Energy consumption +/-5%	Now energy efficient +/-5%	Gas flow rate +/-5%	Energy efficiency +/-7%		
	(kcal/h)	(IN)	(Btu/h)	(IN)	(A)	(kg/h)	(kcal/Wh)	(W/W)	(Btu/Wh)
-35	39	45	154	55	0.25	0.87	0.70	0.81	2.77
-30	62	72	247	63	0.29	1.40	0.99	1.15	3.92
-25	85	99	337	72	0.34	1.91	1.18	1.38	4.70
-20	110	127	435	81	0.39	2.47	1.35	1.57	5.35
-15	139	162	552	92	0.45	3.15	1.52	1.77	6.03
-10	177	206	702	103	0.50	4.02	1.72	2.00	6.82

Condensing temperature 65°C

Evaporation temperature	Cooling capacity +/-5%			Energy consumption +/-5%	Now energy efficient +/-5%	Gas flow rate +/-5%	Energy efficiency +/-7%		
	(kcal/h)	(IN)	(Btu/h)	(IN)	(A)	(kg/h)	(kcal/Wh)	(W/W)	(Btu/Wh)
-35	29	33	114	56	0.29	0.65	0.51	0.59	2.03
-30	51	60	204	64	0.33	1.15	0.80	0.93	3.16
-25	73	84	288	74	0.37	1.64	0.99	1.15	3.91
-20	96	111	380	84	0.41	2.16	1.14	1.32	4.52
-15	124	144	491	96	0.45	2.80	1.29	1.50	5.12
-10	159	185	632	109	0.48	3.62	1.47	1.71	5.82

Embraco/Embraco Piston Compression Product List:

model	Refrigerant	Voltage	frequency	application	horsepower	frequency/rotation	Cooling capacity	Displacement(cm³)	Lubricant category	motor model	starting torque	test type
EM2U80HLP	R-134a	115-127V 60Hz 1~	60Hz	LBP	1/4	1.70	232	6.76	ISO10	RSCR-12µF	LST	ASHRAE32
EM2U80HLP	R-134a	115-127V 60Hz 1~	60Hz	LBP	1/4	1.70	232	6.76	ISO10	RSCR-15µF	LST	ASHRAE32
EM2U80HLP	R-134a	115-127V 60Hz 1~	60Hz	LBP	1/4	1.65	232	6.76	ISO10	RSIR	LST	ASHRAE32
EM2U80HLP	R-134a	220V 60Hz 1~	60Hz	LBP	1/4	1.67	232	6.76	ISO10	RSCR-4µF	LST	ASHRAE32
EM2U80HLP	R-134a	220V 60Hz 1~	60Hz	LBP	1/4	1.61	232	6.76	ISO10	RSIR	LST	ASHRAE32
EM2Z80HLT	R-134a	115-127V 60Hz 1~	60Hz	LBP	1.76	239	6.76	ISO10	RSCR-12µF	LST	ASHRAE32	

EM2Z80HLT	R-134a	115-127V 60Hz 1~	60Hz	LBP	1.76	239	6.76	ISO10	RSCR-15µF	LST	ASHRAE32	
EM20HHR	R-134a	220-240V 50-60Hz 1~	50Hz	HBP	1/12	2.51	246	2.27	ISO22	RSIR-CSIR	LST	CECOMAF
EM20HBR	R-134a	115V 60Hz 1~	60Hz	HBP	1/12	2.37	289	2.27	ISO22	RSIR	LST	ASHRAE32
EM20HHR	R-134a	220-240V 50-60Hz 1~	60Hz	HBP	1/12	2.48	292	2.27	ISO22	RSIR-CSIR	LST	ASHRAE32
EM20HHR	R-134a	115-127V 60Hz 1~	60Hz	HBP	1/12	2.53	299	2.27	ISO22	RSIR-CSIR	LST	ASHRAE32
EMIS20HHR	R-134a	115-127V 60Hz 1~	60Hz	HBP	1/12	2.49	308	2.27	ISO22	RSIR-CSIR	LST	ASHRAE32
EMIS20HHR	R-134a	220V 60Hz 1~	60Hz	HBP	1/12	2.37	308	2.27	ISO22	RSIR-CSIR	LST	ASHRAE32



Private Picture Copyright : [WWW.MBSM.PRO](http://WWW.MBSM.PRO)

## Mbsm.pro, Compressor, aza2370y, 1/6 hp, r134a, Kulthorn

Category: compressor

written by rober us | 6 June 2023


**KULTHORN** Thermally Protected  
**AZ A2370Y** S88  
 220 - 240 V ~ 50Hz R134a  
 RLA 0.9 LRA 5 CE  


  
 KULTHORN KIRBY RoHS  
 MADE IN THAILAND S8824C18000340

**คำเตือน WARNING 注意事项**  
 1. ตัดวงจรไฟฟ้าทุกครั้งก่อนเปิดฝา  
 DISCONNECT POWER BEFORE REMOVING COVER  
 开盖之前必须关闭电源  
 2. การทดสอบแรงดันภายในตัวคอมเพรสเซอร์ต้องไม่เกิน 1000 kPa (150 psig)  
 TEST PRESSURE MUST NOT EXCEED 1000 kPa (150 psig)  
 气压试验不得超过 1000 kPa (150 psig)  
 3. คอมเพรสเซอร์ต้องลงสายดิน  
 THIS COMPRESSOR MUST BE GROUNDED  
 压缩机应连接地下线  
 \*\*\* การละเลยอาจเป็นอันตรายถึงชีวิต \*\*\*  
 NEGLIGENCE MAY RESULT IN SERIOUS INJURY OR DEATH  
 忽视安全有生命危险

Private Picture Copyright : [WWW.MBSM.PRO](http://WWW.MBSM.PRO)

Mbsm.pro, Compressor, aza2370y, 1/6 hp, r134a, Kulthorn


**KULTHORN** Thermally Protected  
**AZ A2370Y** **S88**  
 220 - 240 V ~ 50Hz R1363  
 RLA 0.9 LRA 5 **CE**  

  
 88824C18D00340

**คำเตือน WARNING 注意**  
 1. ห้ามใช้กับแรงดันไฟฟ้าเกินที่กำหนด  
 2. ห้ามใช้กับแรงดันไฟฟ้าเกินที่กำหนด  
 3. ห้ามใช้กับแรงดันไฟฟ้าเกินที่กำหนด  
 4. ห้ามใช้กับแรงดันไฟฟ้าเกินที่กำหนด  
 5. ห้ามใช้กับแรงดันไฟฟ้าเกินที่กำหนด

R134a LBP																
Model	Power (W)	Displ. (cm <sup>3</sup> )	Evaporating Temperature			Condensing Temperature			Refrigerant	Nom. Capacity (kg/24h)	Nom. Capacity (kg/24h)	Nom. Capacity (kg/24h)	Nom. Capacity (kg/24h)			
			5°C	10°C	15°C	40°C	45°C	50°C								
<b>220-240V/50Hz / 1 Ph.</b>																
AE220Y	55	6.92	85	119	127	200	382	145	1.28	240	303	270	R.S.C.R.	—	—	184
AE220Y	55	6.10	85	119	127	200	450	134	1.44	240	303	270	R.S.C.R.	—	—	184
AE220Y	55	6.10	85	119	127	165	321	142	1.31	240	303	270	C.S.R.	30-45°C	—	183
AE220Y	55	6.42	110	163	214	250	380	140	1.21	290	360	485	R.S.C.R.	—	—	188
AE220Y	55	6.42	110	163	214	240	375	140	1.20	290	360	485	R.S.C.R.	—	—	188
AE220Y	55	6.42	110	163	214	217	336	139	1.19	290	339	455	C.S.R.	30-45°C	—	201
AE240Y	58	14.18	126	183	249	270	521	285	1.38	347	430	560	C.S.R.	30-45°C	—	216
AE240Y	58	14.18	126	183	249	270	521	270	1.29	347	430	560	C.S.R.	30-45°C	8400	184
AE240Y	58	13.04	126	181	244	270	521	226	1.19	322	416	520	C.S.R.	30-45°C	—	216
AE241Y	52	14.14	168	227	302	338	1128	285	1.16	388	493	607	C.S.R.	30-45°C	—	216
AE241Y	52	16.12	168	241	324	370	1262	280	1.32	407	544	658	C.S.R.	30-45°C	8400	212
AE241Y	50	18.50	168	240	320	400	1365	325	1.32	505	661	830	C.S.R.	30-45°C	10440	218
<b>115V/60Hz / 1 Ph.</b>																
AEV20Y-1	1/10	2.72	33	48	55	77	282	77	1.00	94	124	150	R.S.R.	—	—	162
AEV20Y-1	1/10	3.28	40	56	64	92	314	84	1.10	115	152	188	R.S.R.	—	—	168
AEV20Y-1	1/10	3.59	41	57	66	110	375	97	1.12	125	176	222	R.S.R.	—	—	168
AEV20Y-1	1/10	3.80	40	56	64	112	382	106	1.06	141	188	234	R.S.R.	—	—	168
AEV20Y-1	1/10	4.00	52	66	77	126	430	120	1.00	152	200	260	R.S.R.	—	—	168
AEV20Y-1	1/8	3.00	45	55	63	148	505	140	1.06	187	246	312	R.S.R.	—	—	172
AEV20Y-1	1/8	3.50	49	62	72	160	514	150	1.12	220	282	360	R.S.R.	—	—	178
AEV20Y-1	1/8	4.00	57	70	82	180	585	170	1.15	241	320	410	R.S.R.	—	—	178
<b>230-250V/50Hz / 1 Ph.</b>																
AEV20Y-2	1/10	3.05	38	48	55	77	282	77	1.00	94	123	152	R.S.R.	—	—	162
AEV20Y-2	1/10	3.25	40	56	64	92	314	86	1.07	115	152	188	R.S.R.	—	—	168
AEV20Y-2	1/10	3.55	41	57	66	110	375	95	1.10	125	176	222	R.S.R.	—	—	168
AEV20Y-2	1/10	3.80	52	70	82	118	382	106	1.12	141	188	230	R.S.R.	—	—	168
AEV20Y-2	1/10	4.00	48	70	79	128	427	112	1.14	157	203	260	R.S.R.	—	—	168

Private Picture Copyright : [WWW.MBSM.PRO](http://WWW.MBSM.PRO)

# Mbsm.pro, Compressor, ELECTROLUX, ACC, GL60AA, GUY57AA, 1/6 hp, r134

Category: compressor

written by Jamila | 6 June 2023



Private Picture Copyright : [WWW.MBSM.PRO](http://WWW.MBSM.PRO)

Mbsm.pro, Compressor, ELECTROLUX, ACC, GL60AA, GVY57AA, 1/5 hp, r134

---

Mbsm.pro, Compressor, Ma serie,  
MA62HAEG, 1/5 hp++, Lg compressor,  
r1234a, 174 w

Category: compressor

written by Jamila | 6 June 2023



Private Picture Copyright : [WWW.MBSM.PRO](http://WWW.MBSM.PRO)

Mbsm.pro, Compressor, Ma serie, MA62HAEG, 1/5 hp, Lg compressor, r1234a

Mbsm.pro, Compressor, 600a, SÉRIE T,  
LBP, Jiaxipera, TG 1116 Y , 1/5hp, TG  
1112 Y, 1/6 hp

Category: compressor

written by Jamila | 6 June 2023



Private Picture Copyright : [WWW.MBSM.PRO](http://WWW.MBSM.PRO)

Mbsm.pro, Compressor, 600a, SÉRIE T, LBP, Jiaxipera, TG 1116 Y , 1/5 hp, TG 1112  
Y, 1/6 hp