

# SUB COOL GQR80TG Compressor Specs and Replacements

Category: Refrigeration

written by [www.mbsm.pro](http://www.mbsm.pro) | 20 February 2026



Private Picture Copyright : [WWW.MBSM.PRO](http://WWW.MBSM.PRO)

The SUB COOL GQR80TG is a versatile 1/4+ HP compressor designed for R134a MBP/HBP systems, commonly found in commercial coolers and mid-size refrigerators. This guide provides the full technical data sheet, including cooling capacity (400W to 810W depending on conditions), oil requirements (380-420ml POE), and a comprehensive list of compatible replacements for both R134a and modern alternative refrigerants to ensure your repair is successful.

---

## Tecumseh THG1374YFS Compressor Specs

# and Replacements

Category: Refrigeration

written by [www.mbsm.pro](http://www.mbsm.pro) | 20 February 2026



Private Picture Copyright : [WWW.MBSM.PRO](http://WWW.MBSM.PRO)

The Tecumseh THG1374YFS (TH271-FS-316) is a reliable 1/4 HP compressor designed

for R134a LBP systems, commonly found in domestic refrigerators and small freezers. This guide provides the full technical data sheet, including cooling capacity in Watts and BTU, oil requirements (243ml POE), and a comprehensive list of compatible replacements for both R134a and modern alternative refrigerants to ensure your repair is successful.

---

## Technical Analysis of High-Performance Hermetic Compressors: GQY80AT and ATA72XL

Category: Refrigeration

written by [www.mbsm.pro](http://www.mbsm.pro) | 20 February 2026



Private Picture Copyright : [WWW.MBSM.PRO](http://WWW.MBSM.PRO)

Choosing between the ZEL GQY80AT and Huaguang ATA72XL requires a deep understanding of displacement and cooling wattage. This professional guide breaks down the 198W capacity of the GQY80AT versus the 185W of the ATA72XL, providing essential data for technicians, including oil types, motor configurations, and a comprehensive list of cross-compatible replacement models.

---

## Donper LG83WZ1 Refrigeration Compressor Technical Specifications and R134a Replacement Guide for Unionaire refrigerator

Category: Refrigeration

written by [www.mbsm.pro](http://www.mbsm.pro) | 20 February 2026



Private Picture Copyright : [WWW.MBSM.PRO](http://WWW.MBSM.PRO)

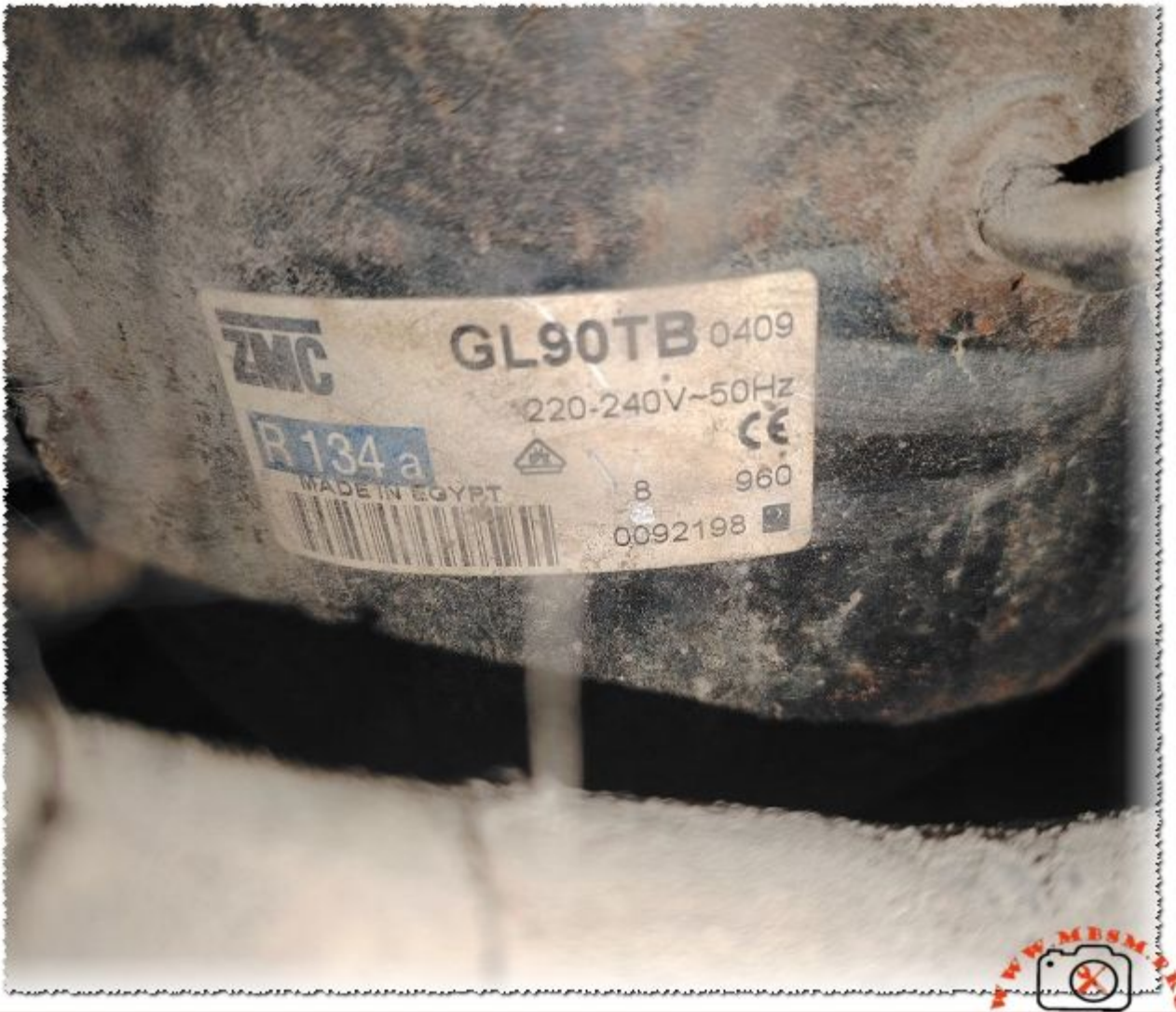
The Donper LG83WZ1 stands as a cornerstone in modern domestic and light commercial refrigeration. Engineered for Low Back Pressure applications, this R134a-driven unit provides reliable cooling capacity for medium to large refrigerators. Its 8.3cc displacement ensures consistent thermal management, making it a preferred choice for technicians seeking a robust, thermally protected motor for demanding climates.

---

## ZMC GL90TB Compressor Technical Specifications and R134a Replacement Guide

Category: Mbsmpro

written by [www.mbsm.pro](http://www.mbsm.pro) | 20 February 2026



Private Picture Copyright : [WWW.MBSM.PRO](http://WWW.MBSM.PRO)

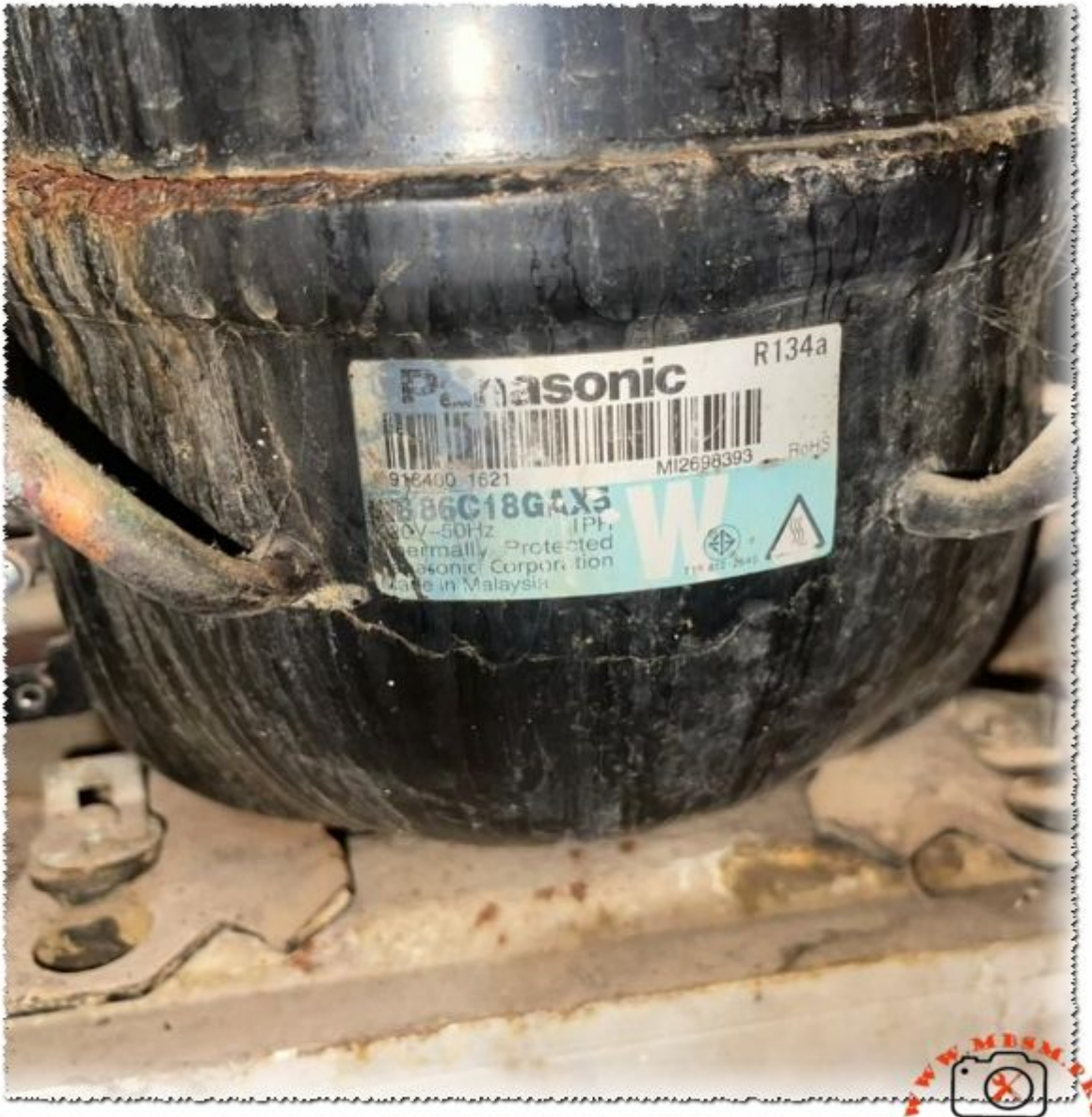
The ZMC GL90TB is a high-performance 1/4 HP compressor designed for High Back Pressure (HBP) commercial refrigeration. Operating on R134a with a 220-240V supply, it offers a cooling capacity of approximately 2800 BTU/h. This article provides technical specs, COP efficiency metrics, and direct replacement models for professional HVAC technicians and industrial cooling experts.

---

## Panasonic QB86C18GAX5: The Reliable Powerhouse of Tropical Refrigeration

Category: Refrigeration

written by [www.mbsm.pro](http://www.mbsm.pro) | 20 February 2026



Private Picture Copyright : [WWW.MBSM.PRO](http://WWW.MBSM.PRO)

The Panasonic QB86C18GAX5 is a 1/4 HP reciprocating compressor engineered for high-efficiency Low Back Pressure (LBP) applications. Using R134a refrigerant and a displacement of 8.6cc, it delivers a cooling capacity of 201W. This guide provides technicians with essential technical data, including amperage, displacement, and a comprehensive cross-reference list for modern repairs.

---

## Engineering Overview: The S118CY1 Architecture

Category: Refrigeration

written by [www.mbsm.pro](http://www.mbsm.pro) | 20 February 2026



Private Picture Copyright : [WWW.MBSM.PRO](http://WWW.MBSM.PRO)

The Donper S118CY1 compressor is a cornerstone of modern domestic refrigeration, engineered for high efficiency in Low Back Pressure (LBP) environments. Utilizing R600a refrigerant, this 1/4 HP unit provides reliable cooling for large household refrigerators and freezers. This guide explores its technical parameters, electrical requirements, and the best cross-reference alternatives for field technicians.

---

## Engineering Overview: The S118CY1

# Architecture

Category: Refrigeration

written by [www.mbsm.pro](http://www.mbsm.pro) | 20 February 2026



Private Picture Copyright : [WWW.MBSM.PRO](http://WWW.MBSM.PRO)

The Donper S118CY1 compressor is a cornerstone of modern domestic refrigeration, engineered for high efficiency in Low Back Pressure (LBP) environments. Utilizing R600a refrigerant, this 1/4 HP unit provides reliable cooling for large household refrigerators and freezers. This guide explores its technical parameters, electrical requirements, and the best cross-reference alternatives for field technicians.

# The Technician's Take on the Matsushita QA77C17GAX5

Category: Refrigeration

written by [www.mbsm.pro](http://www.mbsm.pro) | 20 February 2026



Private Picture Copyright : [WWW.MBSM.PRO](http://WWW.MBSM.PRO)

The Matsushita QA77C17GAX5 is a workhorse in the refrigeration world. This 1/4 HP R134a compressor is a go-to for many household fridges and freezers. In this guide, we break down the technical specs, electrical wiring, and the most reliable replacement options to help you get your cooling system back up and running fast.

---

# The Technician's Take on the Matsushita QA77C17GAX5

Category: Refrigeration

written by [www.mbsm.pro](http://www.mbsm.pro) | 20 February 2026



Private Picture Copyright : [WWW.MBSM.PRO](http://WWW.MBSM.PRO)

The Matsushita QA77C17GAX5 is a workhorse in the refrigeration world. This 1/4 HP R134a compressor is a go-to for many household fridges and freezers. In this guide, we break down the technical specs, electrical wiring, and the most reliable replacement options to help you get your cooling system back up and running fast.