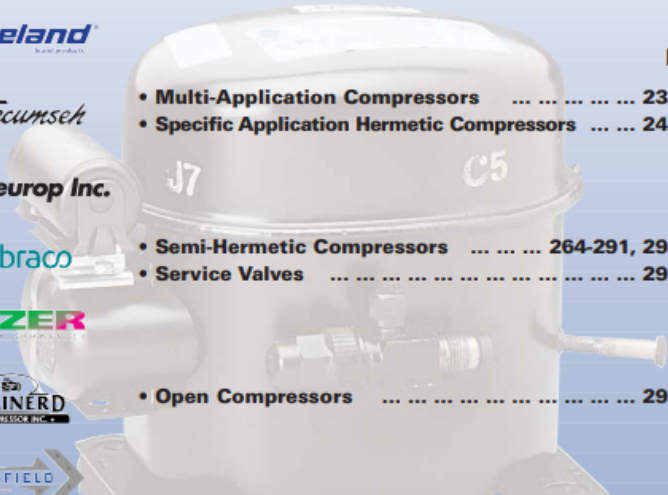


NE2125GK, NEK2130GK, NEK6181GK,
EMT6165GK, ML90FB, KB2416ZK2,
R404a/R507, 1/3HP, LBP, All
COMPRESSEURS, GAZ R404A – R507,
EMBRACO

Category: compressor

written by www.mbsm.pro | 19 December 2021

Table of Contents



	Page
• Multi-Application Compressors	232-241
• Specific Application Hermetic Compressors	242-263
• Semi-Hermetic Compressors	264-291, 293-295
• Service Valves	292-293
• Open Compressors	295-298

REFRIGERATION COMPRESSORS

www.mbsm.pro

Private Picture Copyright : WWW.MBSM.PRO

**Compressor coolant R404a/R507 type
NE2125GK 220-240V 50Hz LBP fully
hermetic 10,45kg 1/3HP**

R404a/R507	refrigerant	605018	piece number
HP 1/3	power	NE2125GK	type
CSIR	motor system	cm³ 8.78	cylinder capacity
IN -	power at -5°C	Watts 534	power at -10°C
IN -	power at +5°C	IN -	power at 0°C
.W 213	power at -30°C	.W 160	power at -35°C
.W 354	power at -20°C	.W 278	power at -25°C
IN -	power at +10°C	.W 439	power at -15°C
kg 10.45	weight	LBP	application
V 220-240	voltage	Hz 50	frequency



Private Picture Copyright: WWW.MBSM.PRO

Compressor coolant R404a/R507 type NEK2130GK 220-240V 50Hz LBP 10,9kg 1/3HP

الصفات الفنية

R404a/R507	refrigerant	605334	رقم القطعة
V 220-240	voltage	NEK2130GK	type
LBP	application	Hz 50	frequency
HP 1/3	power	kg 10.9	weight
CSIR	motor system	cm³ 7.37	cylinder capacity
W 332	power at -25°C	W 255	power at -30°C
W 523	power at -15°C	W 421	power at -20°C
W -	power at -5°C	W 639	power at -10°C
W -	power at +5°C	W -	power at 0°C
R404a/R507	refrigerant	W -	power at +10°C
HP 1/3	power	NEK2130GK	type
CSIR	motor system	cm³ 7.37	cylinder capacity
W 639	power at -10°C	V 220-240	voltage
W -	power at 0°C	W -	power at -5°C
W 255	power at -30°C	W -	power at +5°C
W 421	power at -20°C	W 332	power at -25°C
W -	power at +10°C	W 523	power at -15°C
Hz 50	frequency	LBP	application
		kg 10.9	weight

Private Picture Copyright: WWW.MBSM.PRO

NEK6181GK ASPERA EMBRACO COMPRESSOR 1/3HP R404A / R507

DESCRIPTION

NEK6181GK Aspera Embraco compressor

1/3HP

- Refrigerant: R507a R404A
- Power range(W): 1 – 1,5 kW
- Working area: MBP
- Design type: Hermetic
- Use with: Expansion/Capillary
- Power range(HP):0-2
- Power supply: 220 – 240V/1/50Hz
- Oil type: POE22
- Engine type: CSIR
- Article condition:New

EMT6165GK ASPERA EMBRACO COMPRESSOR 1/3HP R404A / R507

DESCRIPTION

Aspera Embraco EMT6165GK compressor 1/3HP

- high evaporation temperature
- Refrigerant: R507a R404A
- Power range(W): 401 – 500 W 701 – 1000 W
- Performance range:-20 C to +10 C
- Connecting size:4,9 mm
- Working area: MBP
- Design type: Hermetic
- Model series: EMT
- Use with: Expansion/Capillary
- Power range(HP):0-2
- Power supply: 240V/1/50Hz
- Oil type: POE22
- Engine type: CSIR
- Article condition:New

Compressor ACC – ML90FB, LBP – R404A, R507, 1/3HP, 220-240V

Compressor ACC – ML90FB, LBP – R404A, 220-240/50Hz Injection: capillary tube / expansion valve Power: 1/3 HP Refrigerating capacity at -25 / +55°C: 276 W, power consumption: 333 W Max Ambient temperature: 43 °C Displacement: 8.85 cm³ Engine type: CSIR Oil filling: 400 cm³ Oil type: ISO VG 46 ESTER Starting element: HST Start capacitor: 47- 56 / 330 µF/V Voltage range: 187-264 V Starting current: 12.2 A Weight: 11 kg Connections: 6.5 x 4.9 mm Main winding resistance: 8.42 (25°C) Ohm Winding resistance: 29.75 (25°C) Ohm. cooling capacity measured for condensation temperature of: 45°C, measuring conditions: ASHRAECooling capacity

-10 °C -15 °C -20 °C -25 °C -30 °C -35 °C -40 °C

729 606 495 394 305 227 161

Shipping Class Standard
 Scope Of Application LBP
 Lieferzeit 2-3 Wochen
 Type Of Construction Piston
 Condensation Temperature 45°C
 Maker ACC
 Manufacturer No. ML90FB
 Displacement In Cm3 8.85
 Measuring Requirements Ashrae
 Refrigerants R404A, R507
 Series ML
 Condensing Units Compressors Compressors
 Suspense 220-240V
 Weight In Kg 12.1

**Supco KB2416ZK2 – Compressor LBP HST
 1/3HP 1580/1696 BTU 208/230V – R404a
 / R507 Refrigerant – 1580 / 1696 BTU
 @ -10°F – 0.32" I.D. Suction Size –
 0.19" I.D. Discharge**

Stock Code KB2416ZK2
 Brand Supco
 Voltage (V) 208 / 230 VAC
 Phase Single Phase
 HP Rating: 1 / 3 HP
 Oil Charge (oz.) 507 cc.
 Motor High Start Torque
 Operates Icemakers; Refrigerators
 Cross Reference Replacement Part:NEK2134GK ; Manufacturer :Embraco

[Mbsm_dot_pro_private_PDF_KB2416ZK2_prd_001_1_Télécharger](#)

FREON R404a/R507 220-240V 50HZ

Code	Prix	Type	Marque	Puissance HP	Cylindrée CM3	Pression	Schéma électrique	Capacité frigorifique en watt-10°C-5°C0°C+5°C			
SEQ616	89.51€	EMT6144GK	EMBRACO	1/5	3.97	HMBP	CSIR	360	438	530	630
SEQ608	85.02€	NEK6181GK	EMBRACO	1/3	7.28	HMBP	CSIR	565	689	836	1006
SEQ690	86.26€	NEK6210GK	EMBRACO	3/8	8.78	HMBP	CSIR	669	821	999	1205
SEQ709	122.29€	AEZ4425Z	UNITE HERMETIQUE	1/5	4.50	HMBP	CSIR	263	341	432	587
VNQ6987	114.69€	NEK2125GK	EMBRACO	1/4	6.20	LBP	CSIR	243	314	398	494
VASQ6276	112.12€	NEK6144GK	EMBRACO	1/4L	4.52	HMBP	CSIR	368	451	549	660
SEQ703	132.23€	NEK6213GK	EMBRACO	1/2	12.12	HMBP	CSIR	919	1120	1350	1610
CYQ6367	155.22€	NEK2168GK	EMBRACO	5/8	14.30	LBP	CSR	500	650	828	1030
FQQ6559	144.34€	NEK6217GK	EMBRACO	5/8	14.30	HMBP	CSR	1120	1360	1630	1932

VGQ6677	192.44€	AE4470Z	UNITE HERMETIQUE	1/2	12.00	HMBP	CSIR		
VGQ6676	180.64€	AE4450Z	UNITE HERMETIQUE	3/8	8.80	HMBP	CSIR		
SEQ912	198.59€	NJ2212GK	EMBRACO	1.7	34.37	LBP	CSR	945	1333 1775 2273
SEQ617	191.35€	NEK2150GK	EMBRACO	5/8	12.12	LBP	CSIR	445	570 716 888
SEQ902	175.39€	NT6222GK	EMBRACO	3/4	17.40	HMBP	CSR	1280	1590 1930 2308
SEQ609	221.62€	NJ2192GK	EMBRACO	1.2	26.00	LBP	CSR	752	1120 1345 1725
VNQ6902	198.45€	NT6226GK	EMBRACO	1	22.40	HMBP	CSR	1744	2144 2598 3095
VNQ6916	223.47€	NJ9232GK	EMBRACO	1.2	26.20	HMBP	CSR	1953	2458 3182 4070
SEQ674	256.69€	CAJ2432Z	UNITE HERMETIQUE	3/4	18.30	LBP	CSR	510	792 865 1560
CYQ6239	276.42€	CAJ2446Z	UNITE HERMETIQUE	1.2	26.10	LBP	CSR	797	1194 1423 2290
CYQ6236	287.60€	CAJ2428Z	UNITE HERMETIQUE	5/8	15.20	LBP	CSR	394	628 762 1261
IQ1517	307.80€	CAJ9480Z	UNITE HERMETIQUE	5/8	15.20	HMBP	CSR	1009	1284 1607 2172
SEQ990	354.18€	CAJ4517Z	UNITE HERMETIQUE	1.2	25.90	HMBP	CSR	1776	2273 2857 3860
SEQ999	284.58€	CAJ9510Z	UNITE HERMETIQUE	1	18.30	HMBP	CSR	1252	1583 1972 2650
ZNEQ6572	360.83€	CAJ2464Z	UNITE HERMETIQUE	1.5	34.40	LBP	CSR	1076	1605 1902 3012
VASQ6285	348.56€	NJ9238GK	EMBRACO	1.5	32.70	HMBP	CSR	2485	2956 3509 4563
SEQ601	367.83€	NT6220GK	EMBRACO	5/8	14.50	HMBP	CSR	1126	1395 1700
SEQ921	394.30€	CAJ9513Z	UNITE HERMETIQUE	1.1	24.20	HMBP	CSR	1501	1955 2485 3406
VASQ7698	392.13€	CAJ4519Z	UNITE HERMETIQUE	1.5	34.40	HMBP	CSR	2353	3009 3756 5030
ZRQ7716	441.16€	CAJ2440Z	UNITE HERMETIQUE	1	22.80	LBP	CSR	647	945 1166 1876

HMP: Haute moyenne pression

HP: Haute pression

LBP: Basse pression

FREON R404a/R507 220-240V 50HZ

Code	Prix	Type	Marque	Puissance HP	Cylindrée CM3	Pression	Schéma électrique	Capacité frigorigène en watt-10°C-5°C0°C+5°C	
SEQ616	89.51€	EMT6144GK	EMBRACO	1/5	3.97	HMBP	CSIR	360	438 530 630
SEQ608	85.02€	NEK6181GK	EMBRACO	1/3	7.28	HMBP	CSIR	565	689 836 1006
SEQ690	86.26€	NEK6210GK	EMBRACO	3/8	8.78	HMBP	CSIR	669	821 999 1205
SEQ709	122.29€	AEZ4425Z	UNITE HERMETIQUE	1/5	4.50	HMBP	CSIR	263	341 432 587
VNQ6987	114.69€	NEK2125GK	EMBRACO	1/4	6.20	LBP	CSIR	243	314 398 494
VASQ6276	112.12€	NEK6144GK	EMBRACO	1/4L	4.52	HMBP	CSIR	368	451 549 660
SEQ703	132.23€	NEK6213GK	EMBRACO	1/2	12.12	HMBP	CSIR	919	1120 1350 1610
CYQ6367	155.22€	NEK2168GK	EMBRACO	5/8	14.30	LBP	CSR	500	650 828 1030
FQQ6559	144.34€	NEK6217GK	EMBRACO	5/8	14.30	HMBP	CSR	1120	1360 1630 1932
VGQ6677	192.44€	AE4470Z	UNITE HERMETIQUE	1/2	12.00	HMBP	CSIR		
VGQ6676	180.64€	AE4450Z	UNITE HERMETIQUE	3/8	8.80	HMBP	CSIR		
SEQ912	198.59€	NJ2212GK	EMBRACO	1.7	34.37	LBP	CSR	945	1333 1775 2273
SEQ617	191.35€	NEK2150GK	EMBRACO	5/8	12.12	LBP	CSIR	445	570 716 888
SEQ902	175.39€	NT6222GK	EMBRACO	3/4	17.40	HMBP	CSR	1280	1590 1930 2308
SEQ609	221.62€	NJ2192GK	EMBRACO	1.2	26.00	LBP	CSR	752	1120 1345 1725
VNQ6902	198.45€	NT6226GK	EMBRACO	1	22.40	HMBP	CSR	1744	2144 2598 3095
VNQ6916	223.47€	NJ9232GK	EMBRACO	1.2	26.20	HMBP	CSR	1953	2458 3182 4070
SEQ674	256.69€	CAJ2432Z	UNITE HERMETIQUE	3/4	18.30	LBP	CSR	510	792 865 1560
CYQ6239	276.42€	CAJ2446Z	UNITE HERMETIQUE	1.2	26.10	LBP	CSR	797	1194 1423 2290

CYQ6236	287.60€	CAJ2428Z	UNITE HERMETIQUE	5/8	15.20	LBP	CSR	394	628 762 1261
IQ1517	307.80€	CAJ9480Z	UNITE HERMETIQUE	5/8	15.20	HMBP	CSR	1009	1284 1607 2172
SEQ990	354.18€	CAJ4517Z	UNITE HERMETIQUE	1.2	25.90	HMBP	CSR	1776	2273 2857 3860
SEQ999	284.58€	CAJ9510Z	UNITE HERMETIQUE	1	18.30	HMBP	CSR	1252	1583 1972 2650
ZNEQ6572	360.83€	CAJ2464Z	UNITE HERMETIQUE	1.5	34.40	LBP	CSR	1076	1605 1902 3012
VASQ6285	348.56€	NJ9238GK	EMBRACO	1.5	32.70	HMBP	CSR	2485	2956 3509 4563
SEQ601	367.83€	NT6220GK	EMBRACO	5/8	14.50	HMBP	CSR	1126	1395 1700
SEQ921	394.30€	CAJ9513Z	UNITE HERMETIQUE	1.1	24.20	HMBP	CSR	1501	1955 2485 3406
VASQ7698	392.13€	CAJ4519Z	UNITE HERMETIQUE	1.5	34.40	HMBP	CSR	2353	3009 3756 5030
ZRQ7716	441.16€	CAJ2440Z	UNITE HERMETIQUE	1	22.80	LBP	CSR	647	945 1166 1876

HMP: Haute moyenne pression

HP: Haute pression

LBP: Basse pression

FREON R404a/R507 220-240V 50HZ

CODE	TYPE	MARQUE	PUISSANCE HP	CYLINDREE CM3	PRESSION	schema electrique	capacité frigorifique en watt			
							-10°	-5°	0	+5°
FRD161	EMT6144GK	EMBRACO	1/5	3,97	HMBP	CSIR	360	438	530	630
ITD1112	EMT6152GK	EMBRACO	1/4L	4,5	HMBP	CSIR	396	483	582	695
INFD1721	NEK6144GK	EMBRACO	1/4L	4,52	HMBP	CSIR	368	451	549	660
SCD1726	NEK6165GK	EMBRACO	1/4	6,2	HMBP	CSIR	520	626	751	895
FRD153	NEK6181GK	EMBRACO	1/3	7,28	HMBP	CSIR	565	689	836	1006
FRD145	NEK6210GK	EMBRACO	3/8	8,78	HMBP	CSIR	669	821	999	1205
FRD258	NEK6213GK	EMBRACO	1/2	12,12	HMBP	CSIR	919	1120	1350	1610
SDD1004	NEK6217GK	EMBRACO	5/8	14,3	HMBP	CSR	1120	1360	1630	1932
FRD156	NT6220GK	EMBRACO	5/8	14,5	HMBP	CSR	1126	1395	1700	
FRD457	NT6222GK	EMBRACO	3/4	17,4	HMBP	CSR	1280	1590	1930	2308
IAD1457	NT6226GK	EMBRACO	1	22,4	HMBP	CSR	1744	2144	2598	3095
IAD1461	NJ9232GK	EMBRACO	1,2	26,2	HMBP	CSR	1953	2458	3182	4070
INFD1730	NJ9238GK	EMBRACO	1,5	32,7	HMBP	CSR	2485	2956	3509	4563
IAD1432	NEK2125GK	EMBRACO	1/4	6,2	LBP	CSIR	243	314	398	494
FRD162	NEK2150GK	EMBRACO	5/8	12,12	LBP	CSIR	445	570	716	888
PLD1812	NEK2168GK	EMBRACO	5/8	14,3	LBP	CSR	500	650	828	1030
SDD1019	NT2178GK	EMBRACO	3/4	17,4	LBP	CSR	544	735	956	1206
FRLD4079	NT2180GK	EMBRACO	1	20,4	LBP	CSR	648	856	1100	1380
INFD1712	NT2192GK	EMBRACO	1,1	22,4	LBP	CSR	754	998	1280	1598
FRD154	NJ2192GK	EMBRACO	1,2	26	LBP	CSR	752	1120	1345	1725
FRD467	NJ2212GK	EMBRACO	1,7	34,37	LBP	CSR	945	1333	1775	2273
FRD254	AE4425Z	UNITE HERMETIQUE	1/5	4,5	HMBP	CSIR	263	341	432	587
FRD697	AE4430Z	UNITE HERMETIQUE	1/4	5,2	HMBP	CSIR				
ICD6081	AE4440Z	UNITE HERMETIQUE	1/3	6,7	HMBP	CSIR				
ITD1121	AE4450Z	UNITE HERMETIQUE	3/8	8,8	HMBP	CSIR				
ITD1122	AE4470Z	UNITE HERMETIQUE	1/2	12	HMBP	CSIR				
VD6062	CAJ9480Z	UNITE HERMETIQUE	5/8	15,2	HMBP	CSR	1009	1284	1607	2172
FRD444	CAJ9510Z	UNITE HERMETIQUE	1	18,3	HMBP	CSR	1252	1583	1972	2650
FRD476	CAJ9513Z	UNITE HERMETIQUE	1,1	24,2	HMBP	CSR	1501	1955	2485	3406
FRD445	CAJ4517Z	UNITE HERMETIQUE	1,2	25,9	HMBP	CSR	1776	2273	2857	3860
INFD2143	CAJ4519Z	UNITE HERMETIQUE	1,5	34,4	HMBP	CSR	2353	3009	3756	5030
BTD2320	AE2420Z	UNITE HERMETIQUE	1/2	12,6	LBP	CSIR	357	547	654	1047
PLD1781	CAJ2428Z	UNITE HERMETIQUE	5/8	15,2	LBP	CSR	394	628	762	1261
FRD129	CAJ2432Z	UNITE HERMETIQUE	3/4	18,3	LBP	CSR	510	792	865	1560
MED2261	CAJ2440Z	UNITE HERMETIQUE	1	22,8	LBP	CSR	647	945	1166	1876
PLD1784	CAJ2446Z	UNITE HERMETIQUE	1,2	26,1	LBP	CSR	797	1194	1423	2290
MARD1027	CAJ2464Z	UNITE HERMETIQUE	1,5	34,4	LBP	CSR	1076	1605	1902	3012

[Mbsm_dot_pro_private_PDF_Embaraco-compressor-GesamtlisteTélécharger](#)

[Mbsm_dot_pro_private_PDF_compressor-tecumsehTélécharger](#)

[Mbsm_dot_pro_private_PDF_REFRIGERATION-COMPRESSORS-EAVB021ECAVTélécharger](#)

All, Aspera, R12, Compressor, 240V~50hZ, EMBRACO, j2170, Compressor Motor, CC 34.37, 1HP

Category: compressor

written by www.mbsm.pro | 19 December 2021

Aspera R12 Compressors

All Aspera compressors are developed for quiet operation, high reliability & compact dimensions. All single phase models are supplied with their respective electrical components. The 'J' family come complete with a 1" rotalock threaded spud connection, except those categorised as air conditioning versions, these like all other compressor families are supplied with brazed connections.

Key Product Features:

Compressor Model	Motor (HP)	Motor Type	Displacement (CC)	Capacity (Watts)	FLC (Amps)	LRA (Amps)	Cooling Type	Weight (kg)	Height (mm)
R12 LPB									
NB1116B	1/3	RSIR	8.0	134	1.1	9.5	S	9.8	187
NB2118B	1/4	CSIR	8.9/	160	0.9	9.3	S	10.4	187
NE2121A	1/4	CSIR	12.0	192	1.8	11.0	F	10.6	200
T2134A	1/2	CSIR	17.4	306	2.4	30.0	F	13.1	191
T2140A	1/2	CSIR	20.4	340	3.0	20.0	F	14.0	221

Related Products









Private Picture Copyright : WWW.MBSM.PRO

Mbsm_dot_pro_private_PDF_pdf_j2170a-1Télécharger

Mbsm_dot_pro_private_PDF_pdf_j2170a-1-1Télécharger

Codice	Descrizione	HP	Cilindrata	Gas	Volt	Marca
A1116A	Compressore Aspera LBP	1/5	8,00	R12	220	ASPERA
A11RV	Compressore Necchi LBP	1/2	11,11	R502	220	NECCHI
A11V	Compressore Necchi LBP	1/4	11,11	R12	220	NECCHI
A13R	Compressore Necchi LBP	5/8	13,34	R502	220	NECCHI
A13RV	Compressore Necchi LBP	5/8	13/34	R502	220	NECCHI
A13V	Compressore Necchi LBP	1/3	13,35	R12	220	NECCHI
A2116A	Compressore Aspera LBP	1/5	8,00	R12	220	ASPERA
A2118A	Compressore Aspera LBP	1/4	8,85	R12	220	ASPERA
A2121A	Compressore Aspera LBP	1/4	12,00	R12	220	ASPERA
A5160A	Compressore Aspera HBP	1/4	8,00	R12	220	ASPERA

Codice	Descrizione	HP	Cilindrata	Gas	Volt	Marca
A6170A	Compressore Aspera HBP	1/4	8,85	R12	220	ASPERA
A9RV	Compressore Necchi LBP	1/3	9,29	R502	220	NECCHI
AE41ZF11	Compressore Tecumseh	1/4	8,85	R12	220	Tecumseh
AE4450Z	Compressore L'Unitè Hermetique M-HBP	3/8	8,85	R404A	220	L'Unitè Hermetique
AEZ2411Z	Compressore L'Unitè Hermetique LBP	1/3	7,60	R404A	220	L'Unitè Hermetique
AEZ2415Z	Compressore L'Unitè Hermetique LBP	1/3	8,10	R404A	220	L'Unitè Hermetique
AEZ4425Y	Compressore L'Unitè Hermetique M-HBP	1/4	7,55	R134A	220	L'Unitè Hermetique
AEZ4425Z	Compressore L'Unitè Hermetique M-HBP	1/5	4,50	R404A	220	L'Unitè Hermetique
AEZ4430Y	Compressore L'Unitè Hermetique M-HBP	1/4	8,85	R134A	220	L'Unitè Hermetique
AEZ4430Z	Compressore L'Unitè Hermetique M-HBP	1/4	5,70	R404A	220	L'Unitè Hermetique
AEZ4440Z	Compressore L'Unitè Hermetique M-HBP	1/3	7,55	R404A	220	L'Unitè Hermetique
AS75AA	Compressore Electrolux LBP	1/5	6,64	R134A	220	ELECTROLUX
B6144GK	Compressore Aspera HBP	1/5	4,39	R404A	220	ASPERA
BP1046Z	Compressore Aspera LBP	1/15	2,85	R134A	220	ASPERA
BP1058Z	Compressore Aspera LBP	1/12	3,44	R134A	220	ASPERA
BP1111Z	Compressore Aspera LBP	1/6	5,93	R134A	220	ASPERA
BP5125H	Compressore Aspera MBP/HBP	1/10	3,40	R134A	220	ASPERA
BP5128H	Compressore Embraco HBP	1/10	4,60	R134A	220	EMBRACO
BPM1072Z	Compressore Embraco LBP		3,43	R134A	220	EMBRACO
CAE2417Z	Compressore L'Unitè Hermetique LBP	3/8	11,30	R404A	220	L'Unitè Hermetique
CAE2420Z	Compressore L'Unitè Hermetique LBP	1/2	12,54	R404A	220	L'Unitè Hermetique
CAE2424Z	Compressore L'Unitè Hermetique LBP	5/8	15	R404A	220	L'Unitè Hermetique
CAE4440Y	Compressore L'Unitè Hermetique M-HBP	1/3	12,05	R134A	220	L'Unitè Hermetique
CAE4448Y	Compressore L'Unitè Hermetique M-HBP	3/8	14,15	R134A	220	L'Unitè Hermetique
CAE4450Z	Compressore L'Unitè Hermetique M-HBP	3/8	9,40	R404A	220	L'Unitè Hermetique

Codice	Descrizione	HP	Cilindrata	Gas	Volt	Marca
CAE4456Y	Compressore L'Unitè Hermetique M-HBP	1/2	16,00	R134A	220	L'Unitè Hermetique
CAE9450Z	Compressore L'Unitè Hermetique M-HBP	3/8	9,40	R404A	220	L'Unitè Hermetique
CAE9460Z	Compressore L'Unitè Hermetique M-HBP	1/2	11,30	R404A	220	L'Unitè Hermetique
CAE9470Z	Compressore L'Unitè Hermetique M-HBP	5/8	13,30	R404A	220	L'Unitè Hermetique
CAJ2428Z	Compressore L'Unitè Hermetique LBP	5/8	15,20	R404A	220	L'Unitè Hermetique
CAJ2432Z	Compressore L'Unitè Hermetique LBP	3/4	18,30	R404A	220	L'Unitè Hermetique
CAJ2440Z	Compressore L'Unitè Hermetique LBP	1		R404A	220	L'Unitè Hermetique
CAJ2446Z	Compressore L'Unitè Hermetique LBP	1,2	26,15	R404A	220	L'Unitè Hermetique
CAJ2464Z	Compressore L'Unitè Hermetique LBP	1,7	34,45	R404A	220	L'Unitè Hermetique
CAJ2T12A	Compressore L'Unitè Hermetique LBP	1,2		R404A	220	L'Unitè Hermetique
CAJ4461Y	Compressore L'Unitè Hermetique M-HBP	1/2	18,30	R134A	220	L'Unitè Hermetique
CAJ4476Y	Compressore L'Unitè Hermetique M-HBP	3/4	21,75	R134A	220	L'Unitè Hermetique
CAJ4492Y	Compressore L'Unitè Hermetique M-HBP	3/4	25,95	R134A	220	L'Unitè Hermetique
CAJ4511Y	Compressore L'Unitè Hermetique M-HBP	1	32,70	R134A	220	L'Unitè Hermetique
CAJ4519T	Compressore L'Unitè Hermetique M-HBP	1,5	34,45	R22	220	L'Unitè Hermetique
CAJ4519Z	Compressore L'Unitè Hermetique M-HBP	1,5	34,45	R404A	220	L'Unitè Hermetique
CAJ9480Z	Compressore L'Unitè Hermetique M-HBP	5/8		R404A	220	L'Unitè Hermetique
CAJ9510T	Compressore L'Unitè Hermetique M-HBP	3/4	18,30	R22	220	L'Unitè Hermetique
CAJ9510Z	Compressore L'Unitè Hermetique M-HBP	3/4		R404A	220	L'Unitè Hermetique
CAJ9513T	Compressore L'Unitè Hermetique M-HBP	1,1	24,20	R22	220	L'Unitè Hermetique
CAJ9513Z	Compressore L'Unitè Hermetique M-HBP	1,1		R404A	220	L'Unitè Hermetique
CAJ9517Z	Compressore L'Unitè Hermetique M-HBP	1,2		R404A	220	L'Unitè Hermetique
E2121A	Compressore Aspera LBP	1/4	12,00	R12	220	ASPERA
E6187A	Compressore Aspera HBP	1/3	12,00	R12	220	ASPERA
E7213F	Compressore Aspera AC	1/2	12,12	R22	220	ASPERA

Codice	Descrizione	HP	Cilindrata	Gas	Volt	Marca
E7215F	Compressore Aspera AC	1/2	13,25	R22	220	ASPERA
EGL45AA	Compressore Electrolux LBP	1/8	4,56	R134A	220	ELECTROLUX
EGL60AA	Compressore Electrolux LBP	1/6		R134A	220	ELECTROLUX
EGL80AA	Compressore Electrolux LBP	1/5	8,10	R134A	220	ELECTROLUX
EGL80TB	Compressore Electrolux M-HBP	1/5		R134A	220	ELECTROLUX
EGL90AA	Compressore Electrolux LBP	1/4	9,08	R134A	220	ELECTROLUX
EGL90TB	Compressore Electrolux M-HBP	1/4		R134A	220	ELECTROLUX
EGP12FB	Compressore Electrolux LBP	1/3		R134A	220	ELECTROLUX
EGP12TB	Compressore Electrolux M-HBP	3/8		R134A	220	ELECTROLUX
EM60HNP	Compressore Embraco LBP	1/6	5,54	R134A	220	EMBRACO
EMT2117GK	Compressore Embraco LBP	1/4	4,50	R404A	220	EMBRACO
EMT2117U	Compressore Embraco LBP	1/5	3,97	R290	220	EMBRACO
EMT2121GK	Compressore Embraco LBP	1/3	5,19	R404A	220	EMBRACO
EMT2121U	Compressore Embraco LBP	1/4	5,57	R290	220	EMBRACO
EMT2125GK	Compressore Embraco LBP	1/3	5,96	R404A	220	EMBRACO
EMT2125U	Compressore Embraco LBP	1/3	5,96	R290	220	EMBRACO
EMT2130U	Compressore Embraco LBP	1/3	6,76	R290	220	EMBRACO
EMT22HLP	Compressore Embraco LBP	1/12	3	R134A	220	EMBRACO
EMT36HLP	Compressore Embraco LBP	1/8	3,97	R134A	220	EMBRACO
EMT37HDP	Compressore Aspera MBP/HBP	1/10	3,30	R134A	220	ASPERA
EMT43HLP	Compressore Embraco LBP	1/6	4,85	R134A	220	EMBRACO
EMT45HDR	Compressore Aspera MBP/HBP	1/8	3,77	R134A	220	ASPERA
EMT49HLP	Compressore Aspera LBP	1/6	6,84	R134A	220	ASPERA
EMT50HDP	Compressore Aspera MBP/HBP	1/6	4,99	R134A	220	ASPERA
EMT60HLP	Compressore Aspera LBP	1/5	7,87	R134A	220	ASPERA

Codice	Descrizione	HP	Cilindrata	Gas	Volt	Marca
EMT6144GK	Compressore Aspera HBP	1/6	4	R404A	220	ASPERA
EMT6144U	Compressore Embraco HMBP	1/5	4,50	R290	220	EMBRACO
EMT6152U	Compressore Embraco HMBP	1/4	5,20	R290	220	EMBRACO
EMT6160Z	Compressore Embraco HMBP	1/4	6,76	R134A	220	EMBRACO
EMT6165GK	Compressore Aspera HBP	1/5	5,20	R404A	220	ASPERA
EMT6165U	Compressore Embraco HMBP	1/4	5,96	R290	220	EMBRACO
EMT6170Z	Compressore Embraco HMBP	1/4	7,69	R134A	220	EMBRACO
EMT6187Z	Compressore Embraco HMBP	1/3	12	R134A	220	EMBRACO
ESM11	Compressore Necchi LBP	1/4	10,63	R12	220	NECCHI
ESM11K	Compressore Necchi LBP	1/4	10,63	R12	220	NECCHI
ESM3.5	Compressore Necchi LBP	1/10	3,50	R12	220	NECCHI
ESM4	Compressore Necchi LBP	1/8	4,10	R12	220	NECCHI
ESM5	Compressore Necchi LBP	1/6	5,11	R12	220	NECCHI
ESM8	Compressore Necchi LBP	1/5	7,75	R12	220	NECCHI
ESM8K	Compressore Necchi LBP	1/5	7,75	R12	220	NECCHI
ESM9	Compressore Necchi LBP	1/4	9,07	R12	220	NECCHI
FR10G	Compressore Danfoss	1/4	9,05	R134A	220	0
FR8 5G	Compressore Danfoss	1/4	7,95	R134A	220	0
GD24AA	Compressore Electrolux LBP	1/20	2,42	R134A	220	ELECTROLUX
GD30MBA	Compressore Electrolux HBP	1/12	3,00	R134A	220	ELECTROLUX
GD36AA	Compressore Electrolux LBP	1/12	3,58	R134A	220	ELECTROLUX
GD36MBA	Compressore Electrolux HBP	1/10	3,60	R134A	220	ELECTROLUX
GD40AA	Compressore Electrolux LBP	1/20	4,03	R134A	220	ELECTROLUX
GL45AA	Compressore Electrolux LBP	1/8	4,56	R134A	220	ELECTROLUX
GL45TB	Compressore Electrolux MBP-MHBP	1/6	4,50	R134A	220	ELECTROLUX
GL60TB	Compressore Electrolux MBP-MHBP	1/5	5,70	R134A	220	ELECTROLUX

Codice	Descrizione	HP	Cilindrata	Gas	Volt	Marca
GL60TG	Compressore HBP	1/5	5,67	R134A	220	ELECTROLUX
GL80AA	Compressore Electrolux LBP	1/5	8,10	R134A	220	ELECTROLUX
GL80TB	Compressore Electrolux MBP-MHBP	1/4	7,60	R134A	220	ELECTROLUX
GL90AA	Compressore Electrolux LBP	1/4	9,08	R134A	220	ELECTROLUX
GL90TB	Compressore Electrolux MBP-MHBP	1/4	8,80	R134A	220	ELECTROLUX
GP12AB	Compressore Electrolux LBP	1/3	12,00	R134A	220	ELECTROLUX
GP12TB	Compressore Electrolux MBP-MHBP	1/3	12,00	R134A	220	ELECTROLUX
GP14TB	Compressore Electrolux MBP-MHBP	3/8	14,00	R134A	220	ELECTROLUX
GQR80TG	Compressore	1/4	8,1	R134A	220	
GR18TB-T	Compressore Electrolux MBP-MHBP	1/2	18,12	R134A	220	ELECTROLUX
GR22TB-T	Compressore Electrolux MBP-MHBP	5/8	21,74	R134A	220	ELECTROLUX
GS26TB-T	Compressore Electrolux MBP-MHBP	3/4	25,95	R134A	220	ELECTROLUX
GS30TB-T	Compressore Electrolux MBP-MHBP	3/4	29,93	R134A	220	ELECTROLUX
GS34TB-T	Compressore Electrolux MBP-MHBP	1	34,25	R134A	220	ELECTROLUX
HGA2426Z	Compressore Rotativo Orizzontale L'Unitè Hermetique LBP		9,5	R404	220	
HGA2432Z	Compressore Rotativo Orizzontale L'Unitè Hermetique LBP		11,5	R404	220	
HGA2436Z	Compressore Rotativo Orizzontale L'Unitè Hermetique LBP		12,7	R404	220	
HGA2446Z	Compressore Rotativo Orizzontale L'Unitè Hermetique LBP		16,1	R404	220	
HGA4445Y	Compressore Rotativo Orizzontale L'Unitè Hermetique MBP		9,5	R134	220	
HGA4450Y	Compressore Rotativo Orizzontale L'Unitè Hermetique MBP		11,5	R134	220	
HGA4460Y	Compressore Rotativo Orizzontale L'Unitè Hermetique MBP		12,7	R134	220	
HGA4467Z	Compressore Rotativo Orizzontale L'Unitè Hermetique MBP		9,5	R404	220	

Codice	Descrizione	HP	Cilindrata	Gas	Volt	Marca
HGA4476Y	Compressore Rotativo Orizzontale L'Unitè Hermetique MBP		16,1	R134	220	
HGA4480Z	Compressore Rotativo Orizzontale L'Unitè Hermetique MBP		11,5	R404	220	
HGA4492Z	Compressore Rotativo Orizzontale L'Unitè Hermetique MBP		12,7	R404	220	
HGA4512Z	Compressore Rotativo Orizzontale L'Unitè Hermetique MBP		16,1	R404	220	
HMK12AA	Compressore ACC LBP		11,20	R600A	220	
HTK12AA	Compressore ACC LBP		11,14	R600A	220	
J2152A	Compressore Aspera LBP	5/8	26,00	R12	220	ASPERA
J2152M	Compressore Aspera LBP	5/8	26,00	R12	220	ASPERA
J2152Z	Compressore Aspera LBP	3/4	27,12	R134A	220	ASPERA
J2170A	Compressore Aspera LBP	1	34,37	R12	220	ASPERA
J2170M	Compressore Aspera LBP	1	34,37	R12	380	ASPERA
J2178E	Compressore Aspera LBP	1	23,50	R22	220	ASPERA
J2190E	Compressore Aspera LBP	1,2	27,10	R22	220	ASPERA
J2192GK	Compressore Aspera LBP	1,2	26,00	R404A	220	ASPERA
J2192GS	Compressore Aspera LBP	1,2	26,00	R404A	380	ASPERA
J2212GK	Compressore Aspera LBP	1,7	34,37	R404A	220	ASPERA
J2212GS	Compressore Aspera LBP	1,7	34,37	R404A	380	ASPERA
J6220A	Compressore Aspera HBP	3/4	25,80	R12	220	ASPERA
J6220Z	Compressore Aspera MBP/HBP	3/4	25,80	R134A	220	ASPERA
J6220ZX	Compressore Aspera MHP/HBP	3/4	25,80	R134A	380	ASPERA
J6226A	Compressore Aspera HBP	1	34,37	R12	220	ASPERA
J6226M	Compressore Aspera HBP	1	34,37	R12	380	ASPERA
J6226Z	Compressore Aspera MBP/HBP	1	34,37	R134A	220	ASPERA
J6226ZX	Compressore Aspera MBP/HBP	1	34,37	R134A	380	ASPERA

Codice	Descrizione	HP	Cilindrata	Gas	Volt	Marca
J7225F	Compressore Aspera AC	1	21,70	R22	220	ASPERA
J7228F	Compressore Aspera AC	1,1	23,80	R22	220	ASPERA
J7228P	Compressore Aspera AC	1,1	23,80	R22	380	ASPERA
J7231F	Compressore Aspera AC	1,2	26,20	R22	220	ASPERA
J7231P	Compressore Aspera AC	1,2	26,20	R22	380	ASPERA
J7238E	Compressore Aspera AC	1,5	32,65	R22	220	
J7238P	Compressore Aspera AC	1,5	32,65	R22	380	
J7240F	Compressore Aspera AC	1,75	34,37	R22	220	
J7240P	Compressore Aspera AC	1,75	34,37	R22	380	
J9226E	Compressore Aspera MBP/HBP	1	21,70	R22	220	
J9226GK	Compressore Aspera HBP	1	21,70	R404A	220	
J9226GS	Compressore Aspera HBP	1	21,70	R404A	380	
J9226P	Compressore Aspera MBP/HBP	1	21,70	R22	380	
J9232E	Compressore Aspera MBP/HBP	1,2	26,20	R22	220	
J9232GK	Compressore Aspera HBP	1,2	26,14	R404A	220	
J9232GS	Compressore Aspera HBP	1,2	26,14	R404A	220	
J9232P	Compressore Aspera MBP/HBP	1,2	26,20	R22	380	
J9238E	Compressore Aspera MBP/HBP	1,5	32,70	R22	220	
J9238GK	Compressore Aspera HBP	1,5	32,70	R404A	220	
J9238GS	Compressore Aspera HBP	1,5	32,70	R404A	380	
J9238P	Compressore Aspera MBP/HBP	1,5	32,70	R22	380	
L40TN	Compressore Electrolux MBP-MHBP	1/6	4,04	R22	220	
L45TN	Compressore Electrolux MBP-MHBP	1/5	4,50	R22	220	
L57TN	Compressore Electrolux MBP-MHBP	1/4	5,67	R22	220	
L76TN	Compressore Electrolux MBP-MHBP	1/4	7,57	R22	220	

Codice	Descrizione	HP	Cilindrata	Gas	Volt	Marca
L88TN	Compressore Electrolux MBP-MHBP	1/3	8,85	R22	220	
MK16TB	Compressore Electrolux MBP-MHBP	3/4	15	R404A-R507-R407B	220	
ML40TB	Compressore Electrolux MBP-MHBP	1/6	4	R404A-R507-R407B	220	
ML45TB	Compressore Electrolux MBP-MHBP	1/5	4,5	R404A-R507-R407B	220	
ML60FB	Compressore Electrolux LBP	1/5	6,00	R404A-R507-R407B	220	
ML60TB	Compressore Electrolux MBP-MHBP	1/4	5,67	R404A-R507-R407B	220	
ML80TB	Compressore Electrolux MBP-MHBP	1/4	7,57	R404A-R507-R407B	220	
ML90FB	Compressore Electrolux LBP	1/4	8,80	R404A-R507-R407B	220	
ML90TB	Compressore Electrolux MBP-MHBP	1/3	8,85	R404A-R507-R407B	220	
MP12FB	Compressore Electrolux LBP	1/3	12	R404A-R507-R407B	220	
MP12TB	Compressore Electrolux MBP-MHBP	1/2	12	R404A-R507-R407B	220	
MP14FB	Compressore Electrolux LBP	1/2	14	R404A-R507-R407B	220	
MP14TB	Compressore Electrolux MBP-MHBP	5/8	14	R404A-R507-R407B	220	
MR18FB	Compressore Electrolux LBP	3/4	18,20	R404A-R507-R407B	220	
MR18TB	Compressore Electrolux MBP-MHBP	1	18,12	R404A-R507-R407B	220	
MR22FB-T	Compressore Electrolux LBP	1	21,80	R404A-R507-R407B	220	
MR22TB	Compressore Electrolux MBP-MHBP	1.1	21,74	R404A-R507-R407B	220	
MR26FB-T	Compressore Electrolux LBP	1.2	26,15	R404A-R507-R407B	220	
MS26TB	Compressore Electrolux MBP-MHBP	1.2	25,95	R404A-R507-R407B	220	
MS34FB-T	Compressore Electrolux LBP	1.5	34,25	R404A-R507-R407B	220	
MX21FB	Compressore Cubigel LBP	3/4	20,72	R404A	220	
N17RV	Compressore Necchi LBP	3/4	17,52	R502	220	
N17V	Compressore Necchi LBP	1/2	17,52	R12	220	
N21RV	Compressore Necchi LBP	1	20,68	R502	220	
N21V	Compressore Necchi LBP	3/4	20,68	R12	220	

Codice	Descrizione	HP	Cilindrata	Gas	Volt	Marca
NB1112Z	Compressore Aspera LBP	1/6	6,72	R134A	220	
NB1116Z	Compressore Aspera LBP	1/5	8,38	R134A	220	
NB1118Z	Compressore Aspera LBP	1/4	8,00	R134A	220	
NB2117GK	Compressore Aspera LBP	1/5	4,39	R404A	220	
NB2118Z	Compressore Aspera LBP	1/4	8,00	R134A	220	
NB2121GK	Compressore Aspera LBP	1/4	6,06	R404A	220	
NB5132Z	Compressore Aspera MBP/HBP	1/6	4,85	R134A	220	
NB5144Z	Compressore Aspera MBP/HBP	1/5	5,90	R134A	220	
NB5160Z	Compressore Aspera MBP/HBP	1/4	8,00	R134A	220	
NB5170Z	Compressore Aspera MBP/HBP	1/4	8,85	R134A	220	
NB6144E	Compressore Aspera MBP/HBP	1/5	5,90	R22	220	
NB6144GK	Compressore Aspera HBP	1/5	4,39	R404A	220	
NB6144Z	Compressore Aspera MBP/HBP	1/5	5,90	R134A	220	
NB6152E	Compressore Aspera MBP/HBP	1/4	4,85	R22	220	
NB6152GK	Compressore Aspera MBP/HBP	1/4	4,88	R404A	220	
NB6160Z	Compressore Aspera MBP/HBP	1/4	8,00	R134A	220	
NB6165E	Compressore Aspera MBP/HBP	1/4	6,00	R22	220	
NB6165GK	Compressore Aspera HBP	1/4	6,06	R404A	220	
NB6170Z	Compressore Aspera MBP/HBP	1/4	8,85	R134A	220	
NBT1116Y	Compressore Embraco LBP		12,12	R600A	220	
NE1130Z	Compressore Aspera LBP	1/3	12,12	R134A	220	
NE2121Z	Compressore Aspera LBP	1/4	13,60	R134A	220	
NE2125E	Compressore Aspera LBP	1/4	8,90	R22	220	
NE2125GK	Compressore Aspera LBP	1/3	8,90	R404A	220	
NE2130Z	Compressore Aspera LBP	1/3	15,28	R134A	220	

Codice	Descrizione	HP	Cilindrata	Gas	Volt	Marca
NE2134E	Compressore Aspera LBP	1/2	12,00	R22	220	
NE2134GK	Compressore Aspera LBP	1/2	12,00	R404A	220	
NE5187Z	Compressore Aspera MBP/HBP	1/3	12,00	R134A	220	
NE6144GK	Compressore Aspera HBP	1/5	4,39	R404A	220	
NE6181E	Compressore Aspera MBP/HBP	1/3	7,40	R22	220	
NE6181GK	Compressore Aspera HBP	1/3	7,38	R404A	220	
NE6187Z	Compressore Aspera MBP/HBP	1/3	12,00	R134A	220	
NE6210E	Compressore Aspera MBP/HBP	3/8	8,90	R22	220	
NE6210GK	Compressore Aspera HBP	3/8	8,90	R404A	220	
NE6210Z	Compressore Aspera MBP/HBP	1/2	13,60	R134A	220	
NE6217GK	Compressore Aspera HBP	5/8	14,28	R404A	220	
NE9213E	Compressore Aspera MBP/HBP	1/2	12,00	R22	220	
NE9213GK	Compressore Aspera HBP	1/2	12,00	R404A	220	
NEK2116Z	Compressore Embraco LBP	1/5		R404A	220	
NEK2125GK	Compressore Embraco LBP	1/3	6,20	R404A	220	
NEK2125U	Compressore Embraco LBP	1/3	7,28	R290	220	
NEK2130GK	Compressore Embraco LBP	1/2	7,38	R404A	220	
NEK2134GK	Compressore Embraco LBP	1/2	8,78	R404A	220	
NEK2134U	Compressore Embraco LBP	1/2	10,00	R290	220	
NEK2140Z	Compressore Embraco LBP	1/2	16,80	R134A	220	
NEK2150GK	Compressore Embraco LBP	5/8	12,12	R404A	220	EMBRACO
NEK2150U	Compressore Embraco LBP	1/2	13,54	R290	220	
NEK2160U	Compressore Embraco LBP	3/4	16,80	R290	220	
NEK2168GK	Compressore Embraco LBP	3/4	14,28	R404A	220	
NEK6144GK	Compressore Aspera HBP	1/5	4,39	R404A	220	

Codice	Descrizione	HP	Cilindrata	Gas	Volt	Marca
NEK6160Z	Compressore Aspera MBP/HBP	1/4	8,00	R134A	220	
NEK6165GK	Compressore Aspera HBP	1/4	6,06	R404A	220	
NEK6170Y	Compressore Aspera MBP/HBP	1/4	14,28	R600A	220	
NEK6170Z	Compressore Aspera MBP/HBP	1/4	8,85	R134A	220	
NEK6181GK	Compressore Aspera HBP	1/3	7,38	R404A	220	
NEK6181U	Compressore Embraco HMBP	1/3	7,28	R290	220	
NEK6187Z	Compressore Embraco Aspera M-HBP	1/3	10	R134A	220	
NEK6210GK	Compressore Embraco HBP	3/8	8,90	R404A	220	
NEK6210U	Compressore Embraco HMBP	3/8	8,78	R290	220	
NEK6212Z	Compressore Embraco MBP-HBP	1/2	14,30	R134A	220	
NEK6213GK	Compressore Embraco HBP	1/2	12,12	R404A	220V	EMBRACO
NEK6213U	Compressore Embraco HMBP	1/2	12,12	R290	220	
NEK6214Z	Compressore Embraco M-HBP	5/8	16,80	R134A	220	
NEK6217GK	Compressore Embraco MBP	5/8	14,28	R404A	220	
NEK6217U	Compressore Embraco HMBP	5/8	14,30	R290	220	
NEU2178GK	Compressore Aspera	1	16,80	R404A	220	0
NJ2152Z	Compressore Aspera LBP	3/4	27,12	R134A	220	
NJ2192GK	Compressore Aspera LBP	1,2	26	R404A	220	
NJ2192GS	Compressore Aspera LBP	1,2	26	R404A	380	
NJ2212GK	Compressore Aspera LBP	1,7	34,37	R404A	220	
NJ6226Z	Compressore Embraco M-HP	1	34,37	R134A	220	
NJ9226GK	Compressore Embraco M-HP	1	21,70	R404A	220	
NJ9226GS	Compressore Embraco M-HP	1	21,70	R404A	380	
NJ9232GK	Compressore Embraco HBP	1,2	26,14	R404A	220	
NJ9232GS	Compressore Embraco HBP	1,2	26,14	R404A	380	EMBRACO

Codice	Descrizione	HP	Cilindrata	Gas	Volt	Marca
NJ9238GK	Compressore Embraco HBP	1,5	32,70	R404A	220	
NJ9238GS	Compressore Embraco HBP	1,5	32,70	R404A	380	
NL7F	Compressore Danfoss LBP	1/5	7,27	R134A	220	
NL8.4MF	Compressore Secop LBP-HBP		8,3	R134A	220	0
NLE11KK4	Compressore Secop LBP		11,15	R600A	220	0
NT2160U	Compressore Embraco LBP	3/4	17,40	R290	220	
NT2168GK	Compressore Embraco LBP	3/4	14,50	R404A	220	
NT2168GS	Compressore Embraco LBP	3/4	14,50	R404A	380	
NT2170U	Compressore Embraco LBP	3/4	20,44	R290	220	
NT2178GK	Compressore Embraco LBP	1	17,40	R404A	220	
NT2180GK	Compressore Embraco LBP	1,1	20,40	R404A	220	
NT2180U	Compressore Embraco LBP	1	22,40	R290	220	
NT2192GK	Compressore Embraco LBP	1,2	22,40	R404A	220	
NT2192GS	Compressore Embraco LBP	1,2	22,40	R404A	380	
NT2210U	Compressore Embraco LBP	1 1/4	27,80	R290	220	
NT2212GK	Compressore Embraco LBP	1,7	27,80	R404A	220	
NT2212GS	Compressore Embraco LBP	1,7	27,80	R404A	380	
NT6217U	Compressore Embraco HMBP	5/8	14,50	R290	220	
NT6220GK	Compressore Embraco HBP	3/4	14,50	R404A	220	
NT6220U	Compressore Embraco HMBP	3/4	17,40	R290	220	
NT6222GK	Compressore Embraco HBP	1	17,40	R404A	220	
NT6222U	Compressore Embraco HMBP	1	20,44	R290	220	
NT6224U	Compressore Embraco HMBP	1 1/4	17,40	R290	220	
NT6226GK	Compressore Embraco HBP	1	22,40	R404A	220	
OF1033A	Compressore ACC LBP		5,73	R134A	220	

Codice	Descrizione	HP	Cilindrata	Gas	Volt	Marca
P12TN	Compressore Electrolux MBP-MHBP	1/2	12	R22	220	
R18TN	Compressore Electrolux MBP-MHBP	7/8	18,12	R22	220	
R18TN-T	Compressore Electrolux MBP-MHBP	3/4	18,12	R22	220	
S19UN	Compressore Electrolux AC	7/8	18,64	R22	220	
S22TN	Compressore Electrolux MBP-MHBP	7/8	21,78	R22	220	
S22TN-T	Compressore Electrolux MBP-MHBP	1	21,78	R22	220	
S26TN	Compressore Electrolux MBP-MHBP	1,1/4	25,95	R22	220	
S26TN-T	Compressore Electrolux MBP-MHBP	1,1	25,95	R22	220	
SC15G	Compressore Secop	3/8	15,28	R134A	220	0
SC18CL	Compressore Danfoss LBP	1	17,69	R404A	220	DANFOSS
SC21CL	Compressore Danfoss LBP	1.1	20,95	R404A	220	DANFOSS
T2124A	Compressore Aspera LBP	1/4	12,58	R12	220	
T2128A	Compressore Aspera LBP	1/3	14,50	R12	220	
T2134A	Compressore Aspera LBP	1/2	17,40	R12	220	
T2134Z	Compressore Aspera LBP	1/2	19,04	R134A	220	
T2140A	Compressore Aspera LBP	1/2	20,40	R12	220	
T2140E	Compressore Aspera LBP	1/2	14,50	R22	220	
T2140GK	Compressore Aspera LBP	1/2	12,58	R404A	220	
T2140Z	Compressore Aspera LBP	1/2	22,40	R134A	220	
T2155E	Compressore Aspera LBP	5/8	17,40	R22	220	
T2155GK	Compressore Aspera LBP	5/8	14,50	R404A	220	
T2168E	Compressore Aspera LBP	3/4	20,40	R22	220	
T2168GK	Compressore Aspera LBP	3/4	17,40	R404A	220	
T2178GK	Compressore Aspera LBP	1	20,40	R404A	220	
T6185A	Compressore Aspera HBP	1/3	12,58	R12	220	

Codice	Descrizione	HP	Cilindrata	Gas	Volt	Marca
T6213A	Compressore Aspera HBP	1/2	17,40	R12	220	
T6213Z	Compressore Aspera MBP/HBP	1/2	17,40	R134A	220	
T6215A	Compressore Aspera HBP	1/2	20,40	R12	220	
T6215Z	Compressore Aspera MBP/HBP	5/8	20,40	R134A	220	
T6217E	Compressore Aspera MBP/HBP	5/8	14,50	R22	220	
T6217GK	Compressore Embraco HBP	5/8	14,51	R404A	220	
T6217Z	Compressore Aspera MBP/HBP	5/8	22,40	R134A	220	
T6220E	Compressore Aspera MBP/HBP	3/4	17,40	R22	220	
T6220GK	Compressore Aspera HBP	3/4	17,40	R404A	220	
T6222GK	Compressore Aspera HBP	1	20,40	R404A	220	
T7220E	Compressore Aspera AC	3/4	17,40	R22	220	
T7223E	Compressore Aspera AC	1	20,40	R22	220	
TAJ2428Z	Compressore L'Unitè Hermetique LBP	5/8	15,20	R404A	380	
TAJ2446Z	Compressore L'Unitè Hermetique LBP	1,2	26,15	R404A	380	
TAJ2464Z	Compressore L'Unitè Hermetique LBP	1,7	34,45	R404A	380	
TAJ4461Y	Compressore L'Unitè Hermetique M-HBP	1/2	18,30	R134A	380	
TAJ4492Y	Compressore L'Unitè Hermetique M-HBP	3/4	25,95	R134A	380	
TAJ4511Y	Compressore L'Unitè Hermetique M-HBP	1	32,70	R134A	380	
TAJ4517T	Compressore L'Unitè Hermetique M-HBP	1,2	25,95	R22	380	
TAJ4517Z	Compressore L'Unitè Hermetique M-HBP	1,2	25,95	R404A	380	
TAJ4519T	Compressore L'Unitè Hermetique M-HBP	1,5	34,45	R22	380	
TAJ4519Z	Compressore L'Unitè Hermetique M-HBP	1,5	34,45	R404A	380	
TAJ5515E	Compressore L'Unitè Hermetique M-HBP		25,95	R22	380	
TAJ9480T	Compressore L'Unitè Hermetique M-HBP	5/8	15,20	R22	380	
TAJ9480Z	Compressore L'Unitè Hermetique M-HBP	5/8	15,20	R404A	380	

Codice	Descrizione	HP	Cilindrata	Gas	Volt	Marca
TAJ9510T	Compressore L'Unitè Hermetique M-HBP	3/4	18,30	R22	380	
TAJ9510Z	Compressore L'Unitè Hermetique M-HBP	3/4	18,30	R404A	380	
TAJ9513T	Compressore L'Unitè Hermetique M-HBP	1/1	24,20	R22	380	
TAJ9513Z	Compressore L'Unitè Hermetique M-HBP	1/1	24,20	R404A	380	
TL4DL	Compressore Danfoss HBP	1/5	3,86	R404A	220	
TL4F	Compressore Danfoss LBP		3,86	R134A	220	
TL5G	Compressore Danfoss LBP-HBP		5,08	R134A	220	
ZBS1114CY	Compressore Aspera	1/5	11,20	R600A	220	0

Bitzer, Compressor, S6F-30.2Y-40P, Compressor Selection, Semi-hermetic Reciprocating, 1450 min-1 , 101,1 (LP) , 30hp

Category: compressor

written by www.mbsm.pro | 19 December 2021

BITZER is raising the bar in terms of technology and capacity for expanded low temperature applications with the 2nd generation of 2-stage compressors. This series is the result of extensive research on the basis of years of experience in the construction of highly efficient and solid reciprocating compressors. The gas flow control and working valves are specially adapted for low temperature applications.

- Displacement at 1450 min-1 : 101,1 (LP) 50,5 (HP)
- Number of cylinders : 6
- Oilcharge : 4,75 dm³

Displacement (1450 RPM 50Hz):101.10 / 50.50 m³/h Displacement (1750 RPM 60Hz):122.02 / 60.95 m³/h

The Bitzer Compressor is high quality!

Displacement (1450 RPM 50Hz):101.10 / 50.50 m³/h

Displacement (1750 RPM 60Hz):122.02 / 60.95 m³/h

No. of cylinder x bore LP/HP x stroke:6+6 x 82/ 82 mm x 55 mm

Max. pressure (LP/MP/HP):19 / 19 / 28 bar

Connection suction line:42 mm – 1 5/8 inch

Connection discharge line:35 mm – 1 3/8 inch

Oil type R404A/R507A:BSE32 (Standard)

Oil type R448A/R449A:BSE32 (Standard)

Oil type R22:B5.2 (Option) We can also provide the following models

4JTE-15K

GYD80485VAYB4
GED60235VLB332
GMD60137VBYR632
GED60485VBYR3-1
CSH7573-70Y-40P
GYD80182VLYB632
GYD60385VLYR2-2
GED80154VLR332
GYU80295VLR4-2
GSU60120VLB6-2
GED60137VAYB3-1
GUU60154VLR532
GUD80295VLR232
GSD80295VLR6-1
GTU60137VLYB3-1
GUD60137VBYR5-1
GYD80235VBYB332
GYD60421VAYR332
GMD60295VBR3-1
GED80154VBYB6
4NEH-14-40S
GMU60154VLY
GYD60154VAB4-2
GYD80182VAYR4-2
GYD80421VBR5-1
GYD60385VLYR4-1
4TE-9.F3Y-40S
GMD60182VBYB3-2
GMD80120VLR232
GUD60120VBYR5-2
GSD60154VAYR232
GMD60154VBYR632
44EES-12-40S
GMD60154VBB432
GUD80421VWR4-2
GYD80385VAYR2-2
GTD60385VLB632
GED60235VLB2
GED60154VAYR4
GSD80421VWR5-2
GUD60421VBR5
GYD80182VBYB5-1
GED60295VBB5
GED80421VAR4-1
GED60385VLYB3
GYU80421VLR2
GSD80485VBB5-1
GED60120VLB2
GUD60421VBR332
GTD60154VAB4-2

GED60421VAYB6-1
 GMD60485VBB5-1
 GSD60485VAYR4
 GED80295VLYR6-1
 GSD60235VAYB232
 GTD60385VBYR3-1
 GUD60154VBB3-2
 GUD80295VWB6-2
 GED60421VAR5
 GMD80421VBR4
 GED80182VLR532
 GSD60154VBYB6-1
 GTD80421VBYR332
 GSD60182VAYB4-1
 GUD80485VWYR5-2
 GSU80295VLYR6-1
 GSD80182VLYR2-2
 GSU80385VLB432
 GED80295VAY
 GED80295VAB3-2
 GYD60120VAR4

With liquid subcooling 50Hz (R404A/R507A)

Compressor type	Cond. temp. [°C]	Qo / Pe		Evaporating temperature °C										
		-25	-30	-35	-40	-45	-50	-55	-60	-65	-70			
S6F-30.2Y	30	Qo	43400	37400	31750	26500	21700	17420	13690	10540	7920	5800		
Pe	2,53	0,65	8,78	16,94	15,15	13,42	11,77	10,20	8,74	7,40				
35	Qo	42500	36600	31050	25900	21200	17030	13420	10340	7780	5680			
Pe	3,85	1,86	9,89	7,94	6,04	4,21	12,45	10,78	9,23	7,80				
40	Qo	41500	35700	30300	25300	20700	16680	13170	10150	7590				
Pe	25,20	23,10	21,01	18,96	16,95	15,00	13,14	11,37	9,72					
45	Qo	40450	34800	29550	24700	20300	1660	12930	9920					
Pe	26,59	24,37	22,16	19,98	17,86	15,80	13,83	11,96						
50	Qo	39500	34000	28850	24100	19870	16060	12650						
Pe	28,07	25,69	23,33	21,01	18,75	16,57	14,49							
55	Qo	38800	33250	28200	23600	19490	15740							
Pe	29,64	27,06	24,51	22,03	19,63	17,32								

Qo – Cooling capacity [Watt], Pe – Power consumption [kW]

Without liquid subcooling 50Hz (R404A/R507A)

Compressor type	Cond. temp. [°C]	Qo / Pe		Evaporating temperature °C										
		-25	-30	-35	-40	-45	-50	-55	-60	-65	-70			
S6F-30.2Y	30	Qo	38050	31700	26050	21000	16620	12880	9790	7280	5300	3760		
Pe	1,26	18,81	16,61	14,64	12,90	11,37	10,02	8,86	7,85	7,00				
35	Qo	36000	29950	24500	19710	15570	12070	9180	6840	4980	3510			

Pe	22,11	19,66	17,41	15,37	13,53	11,88	10,42	9,13	8,02	5,72
40	Qo	33800	28000	22900	18390	14530	11280	8590	6400	4620
Pe	22,95	20,53	18,26	16,15	14,20	12,42	10,82	9,41	8,18	
45	Qo	31450	26050	21250	17080	13510	10500	8000	5920	
Pe	23,82	21,42	19,12	16,94	14,89	13,00	11,26	9,71		
50	Qo	28950	24000	19590	15770	12490	9710	7370		
Pe	24,72	22,31	19,98	17,74	15,61	13,61	11,76			
55	Qo	26400	21900	17890	14430	11440	8880			
Pe	25,67	23,19	20,80	18,52	16,34	14,27				

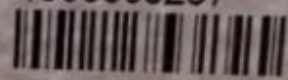
Qo – Cooling capacity [Watt], Pe – Power consumption [kW]



Type S6F-30.2Y-40P

S.No. 1600308267

BITZER KÜHLMASCHINENBAU GMBH
Made in Germany



Nominal Voltage V 3Ph~	Frequ. Hz	Operat. C. A (max.)	Locked Rotor C.		Displacem. m³/h	Speed RPM
			A (Y)	A (YY)		
380-420	50	51	135	220	101,4	1450
440-480	60	51	135	220	122	1750

IP 54 LP/HP max. 19 / 28 bar





Private Picture Copyright : WWW.MBSM.PRO

Mbsm_dot_pro_private_PDF_S6F-30.2Y-40PTélécharger

Compressor type Displacement at 1450 min-1 Number of cylinders Oil charge Weight Pipe connections Motor Max. operating current Max. power consumption Starting

current(lockedrotor)LPHPDLSLdm3KgmpouceAmpkW
Y/YY56F-30.2Y101,150,567.752343513/842
5415/8
21/8380 ..420YY/3/50
440 ..480 YY/3/605131,9135/220

Compressor, hermetic, medium temperature, 7 HP, r22, POE, MT80HP4, MT80 HP4, 400/3/50, 460/3/60 volt, 1-3/4" RL – 1-1/8" x 1-1/4" RL – 3/4"

Category: compressor

written by www.mbsm.pro | 19 December 2021

Product details

Gross weight 41.58 kg

Net weight 39.1 kg

EAN 5702428839525

Approval standard	CE UL
Brand technique	Reciprocating compressor
Capacity control	Fixed speed
Colour	Blue
Compressor power supply [V/Ph/Hz]	400/3/50 460/3/60
Configuration code	Single
Connection type	Rotolock
Cylinder	2
Description	MT080-4
Diameter [mm]	288 mm
Discharge connection height [mm]	74 mm
Discharge connection mounting torque [Nm]	90 Nm
Discharge connection pipe size [in]	3/4 in
Discharge connection rotolock size [in]	1 1/4 in
Discharge connection size [in]	1 1/4 in
Discharge connection sleeve pipe size [in]	3/4 in
Drawing number	8502012g
Economizer	No
Factory HP [bar]	25 bar
Factory LP [bar]	25 bar
Fitting remark	(shipped with rotolock version only)

Fitting sleeve	ODF
Fitting standard	Rotolock
Frequency [Hz]	50/60
Gauge port HP	None
Gauge port LP	Schrader
Generation code	B
Glass mounting	Threaded
Glass torque [Nm]	50 Nm
GP LP torque [Nm]	15 Nm
High side max pressure (Ps)	27.8 bar
High Side TS Max	150 °C
High Side TS Min	-35 °C
High Side Volume	0.6 L
High value of nominal voltage at 50Hz [V]	400 V
High value of nominal voltage at 60Hz [V]	460 V
High value of voltage range at 50Hz [V]	460 V
High value of voltage range at 60Hz [V]	506 V
IP protection class	IP55 (with cable gland)
Low side max pressure (Ps)	18.4 bar
Low Side TS Max	50 °C
Low Side TS Min	-35 °C
Low Side Volume	16.5 L
Low value of nominal voltage at 50Hz [V]	380 V
Low value of nominal voltage at 60Hz [V]	460 V
Low value of voltage range at 50Hz [V]	340 V
Low value of voltage range at 60Hz [V]	414 V
LRA	80 A
MCC	18 A
Model number	MT80HP4AVE
Motor protection	Internal overload protector
Mounting torque [Nm]	15 Nm
Nominal cooling capacity 60 kBTU/h	80.2 kBTU/h
Nominal cooling capacity at 50Hz	17.8 kW
Nominal cooling capacity at 60Hz	23.5 kW
Number of starts per hour [Max]	12
Oil charge [L]	1.8 L
Oil equalization	3/8" flare SAE
Oil equalization torque [Nm]	30 Nm
Oil reference	160P
Packaging height [mm]	455 mm
Packaging length [mm]	395 mm
Packaging weight [Kg]	44 kg
Packaging width [mm]	365 mm
Packing format	Single pack
Packing quantity	1
Phase	3

Power connections	Spade
Refrigerant	R22
Refrigerant charge [kg] [Max]	5 kg
Relief valve	30 bar/8 bar
Rotational speed at 50Hz [rpm]	2900 rpm
Rotational speed at 60Hz [rpm]	3500 rpm
Segment usage	Air conditioning Refrigeration MT
Shipped fittings	Suction and discharge solder sleeves, rotolock nuts and gaskets
Shipped instructions	Installation instructions
Shipped mounting	Mounting kit with grommets, bolts, nuts, sleeves and washers
Shipped oil	Initial oil charge
Suction connection height [mm]	265 mm
Suction connection mounting torque [Nm]	110 Nm
Suction connection pipe size [in]	1 1/8 in
Suction connection rotolock size [in]	1 3/4 in
Suction connection size [in]	1 3/4 in
Suction connection sleeve pipe size [in]	1 1/8 in
Swept volume [cm ³]	135.78 cm ³
Technology	Reciprocating
Test dif [bar] [Max]	30 bar
Test HP [bar] [Max]	30 bar
Test LP [bar] [Max]	25 bar
Torque earth [Nm]	3 Nm
Torque power [Nm]	3 Nm
Total height [mm]	413 mm
Type	MT
Type designation	Compressor
Viscosity [cP]	32 cP
Winding resistance for three-phase compressors with identical windings [Ohm]	1.94 Ohm

Description

Product details

Gross weight 44.5 kg

Net weight 42 kg

EAN 5702428839525

Gross weight 44.5 kg

Net weight 42 kg

EAN 5702428839525

Approval standard	CE UL
Brand technique	Reciprocating compressor
Capacity control	Fixed speed
Colour	Blue
Compressor power supply [V/Ph/Hz]	400/3/50 460/3/60
Configuration code	Single
Connection type	Rotolock
Cylinder	2
Description	MT080-4
Diameter [mm]	288 mm
Discharge connection height [mm]	74 mm
Discharge connection mounting torque [Nm]	90 N-m
Discharge connection pipe size [in]	3/4 in
Discharge connection rotolock size [in]	1 1/4 in
Discharge connection size [in]	1 1/4 in
Discharge connection sleeve pipe size [in]	3/4 in
Drawing number	8502012g
Economizer	No
Factory HP [bar]	25 bar
Factory LP [bar]	25 bar
Fitting remark	(shipped with rotolock version only)
Fitting sleeve	ODF
Fitting standard	Rotolock
Frequency [Hz]	50/60
Gauge port HP	None
Gauge port LP	Schrader
Generation code	B
Glass mounting	Threaded
Glass torque [Nm]	50 N-m
GP LP torque [Nm]	15 N-m
High side max pressure (Ps)	27.8 bar
High Side TS Max	150 Â°C
High Side TS Min	-35 Â°C
High Side Volume	0.6 L
High value of nominal voltage at 50Hz [V]	400 V
High value of nominal voltage at 60Hz [V]	460 V
High value of voltage range at 50Hz [V]	460 V
High value of voltage range at 60Hz [V]	506 V
IP protection class	IP55 (with cable gland)
Low side max pressure (Ps)	18.4 bar
Low Side TS Max	50 Â°C
Low Side TS Min	-35 Â°C
Low Side Volume	16.5 L

Low value of nominal voltage at 50Hz [V]	380 V
Low value of nominal voltage at 60Hz [V]	460 V
Low value of voltage range at 50Hz [V]	340 V
Low value of voltage range at 60Hz [V]	414 V
LRA	80 A
MCC	18.5 A
Model number	MT80HP4AVE
Motor protection	Internal overload protector
Mounting torque [Nm]	15 N-m
Nominal cooling capacity 60 kBTU/h	80.2 kBtu/h
Nominal cooling capacity at 50Hz	17.8 kW
Nominal cooling capacity at 60Hz	23.5 kW
Number of starts per hour [Max]	12
Oil charge [L]	1.8 L
Oil equalization	3/8" flare SAE
Oil equalization torque [Nm]	30 N-m
Oil reference	160P
Packaging height [mm]	455 mm
Packaging length [mm]	395 mm
Packaging weight [Kg]	44 kg
Packaging width [mm]	365 mm
Packing format	Single pack
Packing quantity	1
Phase	3
Power connections	Spade
Refrigerant	R22
Refrigerant charge [kg] [Max]	5 kg
Relief valve	30 bar/8 bar
Rotational speed at 50Hz [rpm]	2900 rpm
Rotational speed at 60Hz [rpm]	3500 rpm
Segment usage	Air conditioning Refrigeration MT
Shipped fittings	Suction and discharge solder sleeves, rotolock nuts and gaskets
Shipped instructions	Installation instructions
Shipped mounting	Mounting kit with grommets, bolts, nuts, sleeves and washers
Shipped oil	Initial oil charge
Suction connection height [mm]	265 mm
Suction connection mounting torque [Nm]	110 N-m
Suction connection pipe size [in]	1 1/8 in
Suction connection rotolock size [in]	1 3/4 in
Suction connection size [in]	1 3/4 in
Suction connection sleeve pipe size [in]	1 1/8 in
Swept volume [cm3]	135.78 cm3

Technology	Reciprocating
Test dif [bar] [Max]	30 bar
Test HP [bar] [Max]	30 bar
Test LP [bar] [Max]	25 bar
Torque earth [Nm]	3 N-m
Torque power [Nm]	3 N-m
Total height [mm]	413 mm
Type	MT
Type designation	Compressor
Viscosity [cP]	32 cP
Winding resistance for three-phase compressors with identical windings [Ohm]	1.94 Ohm
Approval standard	CE UL
Brand technique	Reciprocating compressor
Capacity control	Fixed speed
Colour	Blue
Compressor power supply [V/Ph/Hz]	400/3/50 460/3/60
Configuration code	Single
Connection type	Rotolock
Cylinder	2
Description	MT080-4
Diameter [mm]	288 mm
Discharge connection height [mm]	74 mm
Discharge connection mounting torque [Nm]	90 N-m
Discharge connection pipe size [in]	3/4 in
Discharge connection rotolock size [in]	1 1/4 in
Discharge connection size [in]	1 1/4 in
Discharge connection sleeve pipe size [in]	3/4 in
Drawing number	8502012g
Economizer	No
Factory HP [bar]	25 bar
Factory LP [bar]	25 bar
Fitting remark	(shipped with rotolock version only)
Fitting sleeve	ODF
Fitting standard	Rotolock
Frequency [Hz]	50/60
Gauge port HP	None
Gauge port LP	Schrader
Generation code	B
Glass mounting	Threaded
Glass torque [Nm]	50 N-m
GP LP torque [Nm]	15 N-m
High side max pressure (Ps)	27.8 bar
High Side TS Max	150 Â°C

High Side TS Min	-35 Â°C
High Side Volume	0.6 L
High value of nominal voltage at 50Hz [V]	400 V
High value of nominal voltage at 60Hz [V]	460 V
High value of voltage range at 50Hz [V]	460 V
High value of voltage range at 60Hz [V]	506 V
IP protection class	IP55 (with cable gland)
Low side max pressure (Ps)	18.4 bar
Low Side TS Max	50 Â°C
Low Side TS Min	-35 Â°C
Low Side Volume	16.5 L
Low value of nominal voltage at 50Hz [V]	380 V
Low value of nominal voltage at 60Hz [V]	460 V
Low value of voltage range at 50Hz [V]	340 V
Low value of voltage range at 60Hz [V]	414 V
LRA	80 A
MCC	18.5 A
Model number	MT80HP4AVE
Motor protection	Internal overload protector
Mounting torque [Nm]	15 N-m
Nominal cooling capacity 60 kBTU/h	80.2 kBtu/h
Nominal cooling capacity at 50Hz	17.8 kW
Nominal cooling capacity at 60Hz	23.5 kW
Number of starts per hour [Max]	12
Oil charge [L]	1.8 L
Oil equalization	3/8" flare SAE
Oil equalization torque [Nm]	30 N-m
Oil reference	160P
Packaging height [mm]	455 mm
Packaging length [mm]	395 mm
Packaging weight [Kg]	44 kg
Packaging width [mm]	365 mm
Packing format	Single pack
Packing quantity	1
Phase	3
Power connections	Spade
Refrigerant	R22
Refrigerant charge [kg] [Max]	5 kg
Relief valve	30 bar/8 bar
Rotational speed at 50Hz [rpm]	2900 rpm
Rotational speed at 60Hz [rpm]	3500 rpm
Segment usage	Air conditioning Refrigeration MT
Shipped fittings	Suction and discharge solder sleeves, rotolock nuts and gaskets

Shipped instructions	Installation instructions
Shipped mounting	Mounting kit with grommets, bolts, nuts, sleeves and washers
Shipped oil	Initial oil charge
Suction connection height [mm]	265 mm
Suction connection mounting torque [Nm]	110 N-m
Suction connection pipe size [in]	1 1/8 in
Suction connection rotolock size [in]	1 3/4 in
Suction connection size [in]	1 3/4 in
Suction connection sleeve pipe size [in]	1 1/8 in
Swept volume [cm³]	135.78 cm ³
Technology	Reciprocating
Test dif [bar] [Max]	30 bar
Test HP [bar] [Max]	30 bar
Test LP [bar] [Max]	25 bar
Torque earth [Nm]	3 N-m
Torque power [Nm]	3 N-m
Total height [mm]	413 mm
Type	MT
Type designation	Compressor
Viscosity [cP]	32 cP
Winding resistance for three-phase compressors with identical windings [Ohm]	1.94 Ohm
Refrigerant: R22, Segment usage: Air conditioning;Refrigeration MT, Compressor power supply [V/Ph/Hz]: 400/3/50 460/3/60	

Product details

Gross weight 44.5 kg
Net weight 42 kg
EAN 5702428839525
Gross weight 44.5 kg
Net weight 42 kg
EAN 5702428839525

Approval standard	CE UL
Brand technique	Reciprocating compressor
Capacity control	Fixed speed
Colour	Blue
Compressor power supply [V/Ph/Hz]	400/3/50 460/3/60
Configuration code	Single
Connection type	Rotolock
Cylinder	2

Description	MT080-4
Diameter [mm]	288 mm
Discharge connection height [mm]	74 mm
Discharge connection mounting torque [Nm]	90 N-m
Discharge connection pipe size [in]	3/4 in
Discharge connection rotolock size [in]	1 1/4 in
Discharge connection size [in]	1 1/4 in
Discharge connection sleeve pipe size [in]	3/4 in
Drawing number	8502012g
Economizer	No
Factory HP [bar]	25 bar
Factory LP [bar]	25 bar
Fitting remark	(shipped with rotolock version only)
Fitting sleeve	ODF
Fitting standard	Rotolock
Frequency [Hz]	50/60
Gauge port HP	None
Gauge port LP	Schrader
Generation code	B
Glass mounting	Threaded
Glass torque [Nm]	50 N-m
GP LP torque [Nm]	15 N-m
High side max pressure (Ps)	27.8 bar
High Side TS Max	150 Â°C
High Side TS Min	-35 Â°C
High Side Volume	0.6 L
High value of nominal voltage at 50Hz [V]	400 V
High value of nominal voltage at 60Hz [V]	460 V
High value of voltage range at 50Hz [V]	460 V
High value of voltage range at 60Hz [V]	506 V
IP protection class	IP55 (with cable gland)
Low side max pressure (Ps)	18.4 bar
Low Side TS Max	50 Â°C
Low Side TS Min	-35 Â°C
Low Side Volume	16.5 L
Low value of nominal voltage at 50Hz [V]	380 V
Low value of nominal voltage at 60Hz [V]	460 V
Low value of voltage range at 50Hz [V]	340 V
Low value of voltage range at 60Hz [V]	414 V
LRA	80 A
MCC	18.5 A
Model number	MT80HP4AVE
Motor protection	Internal overload protector
Mounting torque [Nm]	15 N-m
Nominal cooling capacity 60 kBTU/h	80.2 kBTU/h
Nominal cooling capacity at 50Hz	17.8 kW

Nominal cooling capacity at 60Hz	23.5 kW
Number of starts per hour [Max]	12
Oil charge [L]	1.8 L
Oil equalization	3/8" flare SAE
Oil equalization torque [Nm]	30 N-m
Oil reference	160P
Packaging height [mm]	455 mm
Packaging length [mm]	395 mm
Packaging weight [Kg]	44 kg
Packaging width [mm]	365 mm
Packing format	Single pack
Packing quantity	1
Phase	3
Power connections	Spade
Refrigerant	R22
Refrigerant charge [kg] [Max]	5 kg
Relief valve	30 bar/8 bar
Rotational speed at 50Hz [rpm]	2900 rpm
Rotational speed at 60Hz [rpm]	3500 rpm
Segment usage	Air conditioning Refrigeration MT
Shipped fittings	Suction and discharge solder sleeves, rotolock nuts and gaskets
Shipped instructions	Installation instructions
Shipped mounting	Mounting kit with grommets, bolts, nuts, sleeves and washers
Shipped oil	Initial oil charge
Suction connection height [mm]	265 mm
Suction connection mounting torque [Nm]	110 N-m
Suction connection pipe size [in]	1 1/8 in
Suction connection rotolock size [in]	1 3/4 in
Suction connection size [in]	1 3/4 in
Suction connection sleeve pipe size [in]	1 1/8 in
Swept volume [cm ³]	135.78 cm ³
Technology	Reciprocating
Test dif [bar] [Max]	30 bar
Test HP [bar] [Max]	30 bar
Test LP [bar] [Max]	25 bar
Torque earth [Nm]	3 N-m
Torque power [Nm]	3 N-m
Total height [mm]	413 mm
Type	MT
Type designation	Compressor
Viscosity [cP]	32 cP

Winding resistance for three-phase compressors with identical windings [Ohm]	1.94 Ohm
Approval standard	CE UL
Brand technique	Reciprocating compressor
Capacity control	Fixed speed
Colour	Blue
Compressor power supply [V/Ph/Hz]	400/3/50 460/3/60
Configuration code	Single
Connection type	Rotolock
Cylinder	2
Description	MT080-4
Diameter [mm]	288 mm
Discharge connection height [mm]	74 mm
Discharge connection mounting torque [Nm]	90 N-m
Discharge connection pipe size [in]	3/4 in
Discharge connection rotolock size [in]	1 1/4 in
Discharge connection size [in]	1 1/4 in
Discharge connection sleeve pipe size [in]	3/4 in
Drawing number	8502012g
Economizer	No
Factory HP [bar]	25 bar
Factory LP [bar]	25 bar
Fitting remark	(shipped with rotolock version only)
Fitting sleeve	ODF
Fitting standard	Rotolock
Frequency [Hz]	50/60
Gauge port HP	None
Gauge port LP	Schrader
Generation code	B
Glass mounting	Threaded
Glass torque [Nm]	50 N-m
GP LP torque [Nm]	15 N-m
High side max pressure (Ps)	27.8 bar
High Side TS Max	150 Â°C
High Side TS Min	-35 Â°C
High Side Volume	0.6 L
High value of nominal voltage at 50Hz [V]	400 V
High value of nominal voltage at 60Hz [V]	460 V
High value of voltage range at 50Hz [V]	460 V
High value of voltage range at 60Hz [V]	506 V
IP protection class	IP55 (with cable gland)
Low side max pressure (Ps)	18.4 bar
Low Side TS Max	50 Â°C
Low Side TS Min	-35 Â°C

Low Side Volume	16.5 L
Low value of nominal voltage at 50Hz [V]	380 V
Low value of nominal voltage at 60Hz [V]	460 V
Low value of voltage range at 50Hz [V]	340 V
Low value of voltage range at 60Hz [V]	414 V
LRA	80 A
MCC	18.5 A
Model number	MT80HP4AVE
Motor protection	Internal overload protector
Mounting torque [Nm]	15 N-m
Nominal cooling capacity 60 kBTU/h	80.2 kBtu/h
Nominal cooling capacity at 50Hz	17.8 kW
Nominal cooling capacity at 60Hz	23.5 kW
Number of starts per hour [Max]	12
Oil charge [L]	1.8 L
Oil equalization	3/8" flare SAE
Oil equalization torque [Nm]	30 N-m
Oil reference	160P
Packaging height [mm]	455 mm
Packaging length [mm]	395 mm
Packaging weight [Kg]	44 kg
Packaging width [mm]	365 mm
Packing format	Single pack
Packing quantity	1
Phase	3
Power connections	Spade
Refrigerant	R22
Refrigerant charge [kg] [Max]	5 kg
Relief valve	30 bar/8 bar
Rotational speed at 50Hz [rpm]	2900 rpm
Rotational speed at 60Hz [rpm]	3500 rpm
Segment usage	Air conditioning Refrigeration MT
Shipped fittings	Suction and discharge solder sleeves, rotolock nuts and gaskets
Shipped instructions	Installation instructions
Shipped mounting	Mounting kit with grommets, bolts, nuts, sleeves and washers
Shipped oil	Initial oil charge
Suction connection height [mm]	265 mm
Suction connection mounting torque [Nm]	110 N-m
Suction connection pipe size [in]	1 1/8 in
Suction connection rotolock size [in]	1 3/4 in
Suction connection size [in]	1 3/4 in
Suction connection sleeve pipe size [in]	1 1/8 in





Private Picture Copyright : WWW.MBSM.PRO

[Mbsm_dot_pro_private_PDF_MTZ80HP4-1Télécharger](#)

[Mbsm_dot_pro_private_PDF_MTZ80HP4Télécharger](#)

Compresseur à piston Danfoss Maneurop MT22JC5PVE (2.0HP / 1PH) Compresseur à piston Danfoss Maneurop MT22JC4AVE (2.0HP / 3PH) Compresseur à piston Danfoss Maneurop MT28JC5PVE (2.3HP / 1PH) Compresseur à piston Danfoss Maneurop MT22JC4AVE (2.0HP / 3PH) Compresseur à piston Danfoss Maneurop MT28JC5PVE (2.3HP / 1PH) Compresseur à piston Danfoss Maneurop 3PH (2.3HP / 1PH) 2.6HP / 1PH) Compresseur à piston Danfoss Maneurop MT32JF4DVE (2.6HP / 3PH); Compresseur à piston Danfoss Maneurop MT36JG5CVE (3.0HP / 1PH) Compresseur à piston Danfoss Maneurop MT36JG4FVE (3.0HP / 3PH) Compresseur à piston Danfoss Maneurop MT40JH4EVE (3.3HP / 3PH) Danfoss Maneurop Compresseur à piston MT36JG4FVE (3.0HP / 3PH) Compresseur à piston Danfoss Maneurop MT40JH4EVE (3.3HP / 3PH) Danfoss Maneurop Compresseur à piston MT36JG4FVE (3.0HP / 3PH) Compresseur à piston Danfoss Maneurop MT40JH4EVE (3.3HP / 3PH) Compresseur à piston Danfoss Maneurop 3KFHB4 (3.6HP / 3PH) 4.0HP / 3PH) Compresseur à piston Danfoss Maneurop MT56HL4BVE (4.6HP / 3PH) Compresseur à piston Danfoss Maneurop MT64HM4DVE (5.3HP / 3PH) Compresseur à piston Danfoss Maneurop MT72HN4AVE (6.0HP / 3PH) Compresseur à piston Danfoss Maneurop MT80HP4AVE (6.6HP / 3PH) Compresseur à piston Danfoss Maneurop MT72HN4AVE (6.0HP / 3PH) Compresseur à piston Danfoss Maneurop MT80HP4AVE (6.6HP / 3PH) Compresseur à piston Danfoss Maneurop 4.0 Compresseur à piston MT144HV4AVE (12,0HP / 3PH) Compresseur à piston Danfoss Maneurop MT160HW4EVE (13.3HP / 3PH) Compresseur à piston Danfoss Maneurop MTZ22JC5VE (2.0HP / 1PH); [R134A, R404] Compresseur à piston Danfoss Maneurop MTZ22JC4AVE

(2.0HP / 3PH); [R134A, R404] Compresseur à piston Danfoss Maneurop MTZ28JE5AVE
(2,3 HP / 1PH); [R134A, R404] Compresseur à piston Danfoss Maneurop MTZ28JE4AVE
(2,3 HP / 3PH); [R134A, R404] Compresseur à piston Danfoss Maneurop MTZ32JF5AVE
(2,6 CV / 1PH); [R134A, R404] Compresseur à piston Danfoss Maneurop MTZ32JF4BVE
(2.6HP / 3PH); [R134A, R404] Compresseur à piston Danfoss Maneurop MTZ36JG5AVE
(3.0HP / 1PH); [R134A, R404] Compresseur à piston Danfoss Maneurop MTZ36JG4BVE
(3.0HP / 3PH); [R134A, R404] Compresseur à piston Danfoss Maneurop MTZ40JH4AVE
(3,3 CV / 3PH); [R134A, R404] Compresseur à piston Danfoss Maneurop MTZ50HK4CVE
(4,0 CV / 3PH); [R134A, R404] Compresseur à piston Danfoss Maneurop MTZ56HL4BVE
(4,6 CV / 3PH); [R134A, R404] Compresseur à piston Danfoss Maneurop MTZ64HM4CVE
(5,3 HP / 3PH); [R134A, R404] Compresseur à piston Danfoss Maneurop MTZ72HN4AVE
(6,0 CV / 3PH); [R134A, R404] Compresseur à piston Danfoss Maneurop MTZ80HP4AVE
(6,6 CV / 3PH); [R134A, R404] Compresseur à piston Danfoss Maneurop MTZ100HS4VE
(8,3 CV / 3 PH); [R134A, R404] Compresseur à piston Danfoss Maneurop MTZ125HU4VE
(10.0HP / 3PH); [R134A, R404] Compresseur à piston Danfoss Maneurop MTZ144HV4AVE
(12,0 HP / 3PH); [R134A, R404] Compresseur à piston Danfoss Maneurop
MTZ160HE4AVE (13,3 HP / 3PH); [R134A, R404] Compresseur à piston Danfoss
Maneurop NTZ048A4LR1A (2.0HP / 3PH); [R134A, R404, R507] Compresseur à piston
Danfoss Maneurop NTZ068A4LR1A (3,5 CV / 3PH); [R134A, R404, R507] Compresseur à
piston Danfoss Maneurop NTZ096A4LR1A (4,5 CV / 3PH); [R134A, R404, R507]
Compresseur à piston Danfoss Maneurop NTZ108A4LR1A (5,0 CV / 3PH); [R134A, R404,
R507] Compresseur à piston Danfoss Maneurop NTZ136A4LR1A (6,5 CV / 3PH); [R134A,
R404, R507] Compresseur à piston Danfoss Maneurop NTZ215A4LR1A (10,0 HP /
3PH); [R134A, R404, R507] Compresseur à piston Danfoss Maneurop NTZ271A4LR1A
(13.0HP / 3PH); [R134A, R404, R507] COMPRESSEUR MANEUROP 2.0HP MT22 MANEUROPE
2.0HP MT22 COMPRESSEUR MANEUROP COMPRESSEUR MTZ-22JE-4VE R404A MANEUROPE 2.30HP
MT28JE-5PVE MT28-5VI / MT28-5VM COMPRESSEUR MANEUROP 2.30HP MT28JE-5PVE MT28-5VI
/ MT28-5VM COMPRESSEUR MANEUROPEUR 2.30H5 / R404A) COMPRESSEUR MANEUROP 2.8HP
MTZ32-5VM (R134a / R404A / R507) COMPRESSEUR MANEUROP MT32JF5MVE 2-3 / 4HP
((R22) COMPRESSEUR MANEUROP 3.0HP MT36JG4FVE (MT36-4VI / MT36-4VM) (R22)
COMPRESSEUR 3.0HP COMPRESSEUR MT36 MANEUROP 3.3HP MT40JH4EVE COMPRESSEUR
MANEUROP 3.3HP MTZ40-JH4AVE COMPRESSEUR (R407A / C / F / R134A / R404A / R507)
Compresseur MANEUROP MTZ-36-JG4AVE (R407C / R134a / R404A-R407C / R134a / R404A)
-Compresseur JH4AVE (R134a / R404A) – Compresseur 3.3HP 3PH MANEUROP MTZ-44-
HJ4AVE (R134a / R404A) – 3. 5HP 3PH MANEUROP 4HP MTZ-50HK-4CVE (MTZ50-4VI /
MTZ50-4VM) COMPRESSEUR (R134A / R404A) MANEUROP MTZ56HL3BVE R407c, R134a, R507a,
R404a compresseur MANEUROP MT-64-4VM COMPRESSEUR MANEUR 64-4VM COMPRESSEUR
MANEUR COMPRESSEUR MT72-4VM COMPRESSEUR MANEUROP MT-80-4VM (6.5HP) Compresseur
MANEUROP 6.6HP MT81HP4AVE COMPRESSEUR MANEUROP MTZ80HM4DVE COMPRESSEUR MANEUROP
8.5HP MT100-4VM COMPRESSEUR MANEUROPE 10HP MT100-4VM (MT100HS4DVE) COMPRESSEUR
10HP MT100-4VM (MT100HS4DVE) COMPRESSEUR MT12M10 MANHOP 4-COMPRESSEUR 10HP R22)
COMPRESSEUR MANEUROP 10HP MTZ125HW4AVE (R404A / R134A / R507 / R407C)
COMPRESSEUR MANEUROPE 12HP MT144-4VM COMPRESSEUR MANEUROPE 13.3HP MT160-4VM
(MT160HW4DVE) COMPRESSEUR MANZVMER 10 COMPRESSEUR MANZVM4 (MT160HW4DVE) / 2 ‘)
SER. KIT POUR MT-28 MANEUROP 7703009 (1-1 / 8 ‘& 3/4’) SER.

Réfrigerator, Freezer, GR-B562YLC, 420L, 20 Feet, Compressor, 1/3HP, R134A, 135G , LG GR-B562YLC, Bio Shield, Vitamin Plus, Carbon deodorizer

Category: compressor, Freezer, Technologie

written by www.mbsm.pro | 19 December 2021

BRAND TYPE Rp (000) FEATURES

ELECTROLUX ERM-1500 Rp.1588 154lt, Semi Auto Defrost, Low Voltage

LG GC-051SA 1220 46 lt Portable refrigerator

LG GN-V191RL Rp.1551 190lt, Semi Auto Defrost, vertical handle

LG GN-V191RLK Rp.- 190lt, Semi Auto Defrost, XL freezer, Door Lock

LG GN-V191SL Rp.1561 190lt, Semi Auto Defrost, horizontal handle

LG GN-V191SLT Rp.1531 190lt, Semi Auto Defrost, Direct Cooling, Magic Crisper

LG GN-V231RL Rp.1721 230lt, Semi Auto Defrost, vertical handle

LG GN-V231SL Rp.1671 230lt, Semi Auto Defrost, horizontal handle

PANASONIC NR-A172D-ST Rp.1539 155 Lt, Alowa +, Colour: Stainless

PANASONIC NR-A172M Rp.1429 155 Lt, Alowa +, Colour: Orange, Night Blue & Savanna Green

PANASONIC NR-A172S Rp.1399 155 Lt, Alowa +, Colour: Moccachino, Black coffee hairline

PANASONIC NR-A192D-ST Rp.1639 164 Lt, Alowa +, Colour: Stainless

PANASONIC NR-A192M Rp.1499 164 Lt, Alowa +, Colour: Orange, Night Blue & Savanna Green

PANASONIC NR-A192S Rp.1499 164 Lt, Alowa +, Colour: Moccachino, Black coffee hairline

SAMSUNG RA-19PTMU Rp.- 190Lt, Direct cooling, Anti Bacterial Gasket

SAMSUNG RA-19PTPG Rp.- 190Lt, Direct cooling, Anti Bacterial Gasket

SAMSUNG RA-19PTTS Rp.- 190Lt, Door Alarm: 2 min, Anti bacterial gasket

SAMSUNG RA-21PTTS Rp.- 210Lt, Direct cooling, Anti Bacterial Gasket

SANYO SR-D167SB Rp.1290 Semi Auto Defrost, Direct Cooling System

SANYO SR-D182SB Rp.1430 160 lt, Semi auto defrost, 505x510x1160, colour: batik red

SANYO SR-D187SB Rp.1339 Semi Auto Defrost, Direct Cooling System

SANYO SR-D188SB Rp.1490 160 lt, Semi auto defrost, 505x510x1160

SANYO SR-D216SB Rp.1490 Semi auto defrost, 505 x 510 x 1310

SANYO SR-D50 Rp.- 50 lt, 22w, Super silent compressor

SANYO SR-D75 Rp.- 75 lt, 24w, Super silent compressor

SHARP SJ-S170T-RD Rp.1627 SAMURAI series, 160 lt, Anti Bacteria, Semi Auto Defrost

SHARP SJ-S190T-RD Rp.1697 SAMURAI series, 170 lt, Anti Bacteria, Semi Auto Defrost

SHARP SJ-S200T-RD Rp.1747 SAMURAI series, 170 lt, Anti Bacteria, Semi Auto Defrost

SHARP SJ-D17T-SL Rp.1919 Knight series, 150 Lt, Semi Auto Defrost

SHARP SJ-17MKII Rp.1437 170lt, Low voltage, Gripless Handle
SHARP SJ-19MKII Rp.1527 170lt, Low voltage, Gripless Handle
SHARP SJ-22SE Rp.- 180lt, Extra Big Freezer, Semi Auto Defrost
SHARP SJ-G191T Rp.1627 170 Lt, Lemon Series Refrigerator, Low voltage
SHARP SJ-G200T Rp.- Lemon Series Refrigerator, Honeycomb Deodorizer
SHARP SJ-G220T Rp.- Lemon Series Refrigerator, Low voltage
SHARP SJ-K170T Rp.- Lemon Series Refrigerator, Anti Bacteria, Key
SHARP SJ-K190T Rp.- Lemon Series Refrigerator, Anti Bacteria, Key
SHARP SJ-K230T Rp.- Lemon Series Refrigerator, Anti Bacteria, Key
TOSHIBA GR-N9P Rp.1282 70 lt, Portable, Ultra Direct Cooling, Glacio XD7
TOSHIBA GR-N155BC Rp.1281 120 lt, 22 w, Glacio XD7
TOSHIBA GR-N175BC Rp.1422 150 lt, 25 w, Glacio XD7
TOSHIBA GR-N178JZ-T Rp.1422 Glacio Jazz series, Silver ion anti bacteria,
Colour:
Titanium
TOSHIBA GR-N178JZ-W Rp.1422 Glacio Jazz series, Silver ion anti bacteria,
Colour:
White
TOSHIBA GR-N185BCH Rp.1422 160 lt, 27 w, Glacio XD7
TOSHIBA GR-N188JZ-T Rp.1521 Glacio Jazz series, Silver ion anti bacteria,
Colour:
Titanium
TOSHIBA GR-N188JZ-W Rp.1521 Glacio Jazz series, Silver ion anti bacteria,
Colour:
White
TOSHIBA GR-N195C Rp.1477 165 lt, 27 w, Glacio XD7
TOSHIBA GR-N198 Rp.- 165 Lt, Glacio XD7, Silver Ion Anti Bacteria, 27W
TOSHIBA GR-N228 Rp.- 180 Lt, Glacio XD7, Silver Ion Anti Bacteria, 30W
TOSHIBA GR-N198W Rp.- 165 Lt, Dispenser, Glacio XD7, Silver Ion Anti Bacteria,
27W
TOSHIBA GR-N228W Rp.- 180 Lt, Dispenser, Glacio XD7, Silver Ion Anti Bacteria,
30W
= FREEZER =
BRAND TYPE Rp (000) FEATURES
SANYO HF-S4LL Rp.1929 120 lt, 4 rak
SANYO HF-S6L Rp.2229 180 lt, 6 rak
TOSHIBA GF-K149 Rp.1881 4 rak, kunci
TOSHIBA GF-K169 Rp.2021 5 rak, kunci
TOSHIBA GF-K189 Rp.2181 6 rak, kunci
= KULKAS 2 PINTU / 2 DOORS REFRIGERATOR =
BRAND TYPE Rp (000) FEATURES
ELECTROLUX ETB-1800PC Rp.2848 180 Lt, Jet Air Cooling System, Deodorizer, Door
alarm
ELECTROLUX ETB-2300PC Rp.3488 230 Lt, Multi Airflow System, Deo Fresh Active,
Door
alarm
ELECTROLUX ETB-2600PC Rp.4388 260 Lt, Multi Airflow System, Deo Fresh Active,
Door
alarm
ELECTROLUX ETB-3200PC Rp.4888 320 Lt, Multi Airflow System, Deo Fresh Active,

Door

alarm

ELECTROLUX ETE-4407SD Rp.8088 440 Lt, Jet Air Curtain System, UV Platinum deodorizer

ELECTROLUX ETM-4407PD Rp.7289 440 Lt, Jet Air Curtain System, Active Deo, Colour:

Silver

ELECTROLUX ETM-4407SD Rp.7729 440 Lt, Jet Air Curtain System, Active Deo, Colour:

Stainless

ELECTROLUX ETM-5107SD Rp.8689 520 Lt, Active Hybrid Deodorizer, Colour: Stainless

ELECTROLUX ETE-5107SD Rp.8999 522 Lt, UV Platinum Deo, LED display, Colour: Stainless

LG GN-V212RL Rp.2283 210 lt, Vit + Ion, Multi Airflow Cooling System

LG GN-V212RP Rp.2589 210 Lt, Health+ system, Vitamin+

LG GN-V212SL Rp.2179 210 lt, Multi Airflow Cooling System

LG GN-V212SLT Rp.2179 210 lt, Multi Airflow Cooling System

LG GN-V222RLT Rp.2489 220 lt, Vit + Ion, Multi Airflow Cooling System

LG GN-V222RP Rp.2839 220 Lt, Health+ system, Vitamin+

LG GN-V222SLT Rp.2289 220 lt, Vit + Ion, Multi Airflow Cooling System

LG GN-V262RLC Rp.2849 234 lt, Multi Airflow, Moist Balance Crisper

LG GN-V262RLCT Rp.2849 234 lt, Vitamin Plus, Moist Balance Crisper

LG GN-V282RLC Rp.2979 253 lt, , Multi Airflow, Moist Balance Crisper

LG GN-V282RLCT Rp.2989 253 lt, Vitamin Plus, Moist Balance Crisper

LG GN-B352CLC Rp.3849 291lt Nett capacity, Vitamin Plus, Ion Carbon Deodorizer

LG GN-M352CLN Rp.4349 288 lt Nett capacity, Bio Shield, Vitamin Plus, LED display

LG GN-B392CLC Rp.4139 321lt Nett capacity, Vitamin Plus, Ion Carbon Deodorizer

LG GN-M352CPC Rp.4241 288 lt Nett capacity, Door Cooling, Vit Plus, Green Ion Deo,

Flora finishing

LG GN-M352CPC-APG Rp.4229 288 lt Nett capacity, Door Cooling, Vit Plus, Green Ion Deo,

Flora finishing

LG GN-M392CPC Rp.4459 318 lt Nett capacity, Door Cooling, Vit Plus, Green Ion Deo,

Flora finishing

LG GN-M392CPC-APG Rp.4459 288 lt Nett capacity, Door Cooling, Vit Plus, Green Ion Deo,

Flora finishing

LG GN-B492CLC Rp.- 393 lt Nett capacity, Vitamin Plus, Ion Carbon Deodorizer

LG GN-B492GLC Rp.4689 490Lt, Fresh OZone, Bigger Fruits & Veggie Box

LG GN-M492CLN Rp.5369 388 lt Nett capacity, Bio Shield, Vitamin Plus, LED display

LG GN-M492CPC Rp.- 388 lt Nett capacity, Door Cooling, Vit Plus, Green Ion Deo, Flora finishing

LG GN-M492CPC-APG Rp.5239 388 lt Nett capacity, Door Cooling, Vit Plus, Green Ion Deo,

Flora finishing

LG GN-M492GLH Rp.5551 490Lt, Anti-Bacterial Health Guard, Ext Temperature Control

LG GN-M492GPC Rp.5459 490Lt, Green Ion Door Cooling, External Temperature Control

LG GN-B562GLC Rp.5159 560Lt, Fresh OZone, Bigger Fruits & Veggie Box

LG GN-M562GLH Rp.6081 560Lt, Anti-Bacterial Health Guard, Ext Temperature Control

LG GN-M562GPC Rp.5682 560Lt, Green Ion Door Cooling, External Temperature Control

LG GN-B602GLC Rp.5749 600Lt, Fresh OZone, Bigger Fruits & Veggie Box

LG GN-M602GPC Rp.6172 600Lt, Green Ion Door Cooling, External Temperature Control

LG GN-M602GLH Rp.6581 600Lt, Anti-Bacterial Health Guard, Ext Temperature Control

LG GN-B702GPC Rp.7229 700Lt, Green Ion Door Cooling, External Temperature Control

LG GN-M702GLH Rp.7881 700Lt, Anti-Bacterial Health Guard, Ext Temperature Control

LG GN-M702GPH Rp.8121 700Lt, Anti-Bacterial Health Guard, Ext Temperature Control

PANASONIC NR-B222M Rp.2399 210 Lt, Eco compressor (Energy saving up to 30%), Colour: Coral Blue, Savanna Green, Sapphire Violet

PANASONIC NR-B222R Rp.2399 210 Lt, Eco compressor (Energy saving up to 30%), Colour: Lily Starlight Silver, Lily Praline Brown

PANASONIC NR-B222S-H Rp.2399 210 Lt, Eco compressor (Energy saving up to 30%), Colour: Iris Black Hairline

PANASONIC NR-B262M Rp.2582 223 Lt, Eco compressor (Energy saving up to 30%), Colour: Coral Blue, Savanna Green, Sapphire Violet

PANASONIC NR-B262R Rp.2659 223 Lt, Eco compressor (Energy saving up to 30%), Colour: Lily Starlight Silver, Lily Praline Brown

PANASONIC NR-B262S-H Rp.2659 223 Lt, Eco compressor (Energy saving up to 30%), Colour: Iris Black Hairline

SAMSUNG RT-2A SRTS1 Rp.- 196LT, Humidity adjustable for optimal freshness and nutrients

SAMSUNG RT-2B SLTS Rp.- 280 Lt, Silver Nano deodorizer, Coolever zone

SAMSUNG RT-2B SRIS Rp.- 280 Lt, Cool Pack, Silver Plus deo, Colour: inox silver

SAMSUNG RT-41TSGL Rp.5441 336 Lt, Cool Pack, Silver Plus deo, Colour: glass door

SAMSUNG RT-45USGL Rp.5781 450 Lt, Cool Pack, Silver Plus deo, Colour: glass door

SANYO SR-D225NSB Rp.2339 Nano Ferrite Filter, Carbon deodorizer

SANYO SR-D245NSB Rp.2649 Nano Ferrite Filter, Carbon deodorizer

SHARP SJ-F201C-HD Rp.2382 2337 BATIQUÉ Series, 173 Lt, Automatic Defrosting

SHARP SJ-F231C-HD Rp.2633 2547 BATIQUÉ Series, 180 Lt, Automatic Defrosting

SHARP SJ-F201S-RD Rp.2578 2387 SAMURAI series, 170 lt, Anti bacteria

SHARP SJ-F231S-RD Rp.2615 2582 SAMURAI series, 180 lt, Anti bacteria

SHARP SJ-F201G Rp.- Fresh Lemon Series Refrigerator, Low Voltage

SHARP SJ-F231G – Fresh Lemon Series Refrigerator, Low Voltage

SHARP SJ-F232G – 180 lt, Fresh Lemon Series, Low Voltage

SHARP SJ-F233G – 180 lt, Fresh Lemon Series, Low Voltage

SHARP SJ-F232K Rp.- 180 lt, Fresh Lemon Series, Low Voltage, Door key

SHARP SJ-F240G Rp.- 221 lt, Fresh Lemon Series, Low Voltage

SHARP SJ-D22LV-SL Rp.- 195 lt, Lemon Series Refrigerator, Low Voltage
SHARP SJ-D27LV-SL Rp.- 210 lt, Lemon Series Refrigerator, Low Voltage
SHARP SJ-D30LV-SL Rp.- 235 lt, Lemon Series Refrigerator, Low Voltage
SHARP SJ-291NLV-SL Rp.- 260 lt, Lemon Series Refrigerator, Low Voltage
SHARP SJ-351NLV-SL Rp.- 300 lt, Lemon Series Refrigerator, Low Voltage
SHARP SJ-F420G-SS Rp.3727 310 lt, King Samurai Series, No Frost, Deodorizer
SHARP SJ-F420G-PS Rp.3927 310 lt, King Samurai Series, No Frost, Deodorizer
SHARP SJ-431NLV-SL Rp.- 320 lt, Lemon Series Refrigerator, Low Voltage
SHARP SJ-P470NLV-SL Rp.5757 367 lt, Vetro Series, Plasmacluster Ion, Colour: Silver
SHARP SJ-P470NLV-B Rp.5887 367 lt, Vetro Series, Plasmacluster Ion, Colour: Black
SHARP SJ-P471NLV-GS Rp.6482 367 lt, Vetro Series, Plasmacluster Ion, Colour: Glass Silver
SHARP SJ-P471NLV-GB Rp.6682 367 lt, Vetro Series, Plasmacluster Ion, Colour: Glass Black
SHARP SJ-P570NLV-SL Rp.- 397 lt, Vetro Series, Plasmacluster Ion, Colour: Silver
SHARP SJ-P570NLV-B Rp.- 397 lt, Vetro Series, Plasmacluster Ion, Colour: Black
SHARP SJ-P571NLV-GS Rp.- 397 lt, Vetro Series, Plasmacluster Ion, Colour: Glass Silver
SHARP SJ-P571NLV-GB Rp.- 397 lt, Vetro Series, Plasmacluster Ion, Colour: Glass Black
SHARP SJ-461NLV Rp.- 367 lt, SALSA Series Refrigerator, Hybrid Cooling System
SHARP SJ-P461NLV Rp.- 443 lt, SALSA Series Refrigerator, Plasmacluster Ion System
SHARP SJ-561NLV Rp.- 397 lt, SALSA Series Refrigerator, Hybrid Cooling System
SHARP SJ-P561NLV Rp.- 478 lt, SALSA Series Refrigerator, Plasmacluster Ion System
SHARP SJ-P581NLV Rp.- 437 lt, SALSA Series Refrigerator, Hybrid Cooling System, Plasmacluster, Advance LEC Control, Nano Deodorizer
SHARP SJ-P651NLV Rp.- 473 lt, SALSA Series Refrigerator, Hybrid Cooling System, Plasmacluster, Advance LEC Control, Nano Deodorizer
SHARP SJ-P751NLV Rp.- 514 lt, SALSA Series Refrigerator, Hybrid Cooling System, Plasmacluster, Advance LEC Control, Nano Deodorizer
SHARP SJ-P851NLV Rp.- 555 lt, SALSA Series Refrigerator, Hybrid Cooling System, Plasmacluster, Advance LEC Control, Nano Deodorizer
SHARP SJ-WS400T Rp.9347 326 Lt, Dual Swing Door, Energy Saving with Inverter
TOSHIBA GR-M245E Rp.2141 180 lt, No Frost, Glacio XD7
TOSHIBA GR-M245D Rp.2391 180 lt, No Frost, Deodorizer, Glacio XD7
TOSHIBA GR-M265D Rp.2731 216 lt, No Frost, Deodorizer, Glacio XD7
TOSHIBA GR-M258 Rp.2291 216 lt Glacio Jazz, No Frost, Low Voltage
TOSHIBA GR-R21ET Rp.- Import, 180 lt, Health series, Platinum Deodorizer
TOSHIBA GR-R25ET Rp.3491 Import, 228 lt, Health series, Platinum Deodorizer
TOSHIBA GR-R35ED Rp.4551 Import, 280 lt, Hybrid Plasma Deo, AG+ Crisper
TOSHIBA GR-R42ED Rp.4921 Import, 320 lt, Hybrid Plasma Deo, AG+ Crisper
TOSHIBA GR-R48ED Rp.- Import, 401 lt, Hybrid Plasma Deo
TOSHIBA GR-R51ED Rp.5621 Import, 401 lt, Hybrid Plasma Deo, AG+ Crisper
TOSHIBA GR-R58ED Rp.7381 6661 Import/Complete Built-up, 500 lt, Hybrid Plasma Deo
TOSHIBA GR-R66ED Rp.8725 8261 Import/Complete Built-up, 590 lt, Hybrid Plasma

Deo

TOSHIBA GR-RG43ED Rp.- Import, 355 lt, Hybrid Plasma Deo, Glass door

TOSHIBA GR-RG46ED Rp.5621 Import, 410 lt, Hybrid Plasma Deo, AG+ Crisper, Glass door

TOSHIBA GR-RG48ED Rp.- Import, 410 lt, Hybrid Plasma Deo, Glass door

TOSHIBA GR-RG51ED Rp.- Import, 500 lt, Hybrid Plasma Deo, AG+ Crisper, Glass door

TOSHIBA GR-RG58ED Rp.7851 Import, 500 lt, Hybrid Plasma Deo, Glass door

TOSHIBA GR-RG66ED Rp.8961 Import, 590 lt, Hybrid Plasma Deo, Glass door

= KULKAS 3 PINTU / 3 DOORS REFRIGERATOR =

BRAND TYPE Rp (000) FEATURES

ELECTROLUX ETB-2603PC Rp.4889 Deo Fresh Active, Multi Airflow System

TOSHIBA GR-R50EDV Rp.6129 Import/Complete Built-up, 3 doors

SIDE-BY-SIDE REFRIGERATOR

ELECTROLUX ESE-5608TA Rp.13828 555 lt, Crisper with Adjustable Humidity Control

LG GC-B207BLQ Rp.9222 581 lt, Icebeam Door Cooling System, LED Display

LG GC-B207CLC Rp.8151 581 lt, Bio Shield, Moist Balance™ Crisper, Digital Sensor

LG GC-B207CPC Rp.8289 8222 581 lt, Green Health Plus, Moist Balance™ Crisper

LG GC-L207BLK Rp.12889 LED Lighting, Tall ice & water dispenser

LG GR-B207BLQ Rp.8879 581 lt, LED Temperature Control, Bio Shield, Super Cool

LG GR-B217LGJ Rp.15382 581 lt, LED Temperature Control, Bio Shield Flower Pattern

LG GR-L207BLK Rp.- 567 lt, Icebeam Door Cooling System, Water & Ice Dispenser

MODENA RF-2561 Rp.8333 618Lt, Humidity controller crisper, Multi air flow

MODENA RF-2565 Rp.14343 608Lt, LED Temperature control, Ice & water dispenser

MODENA RF-4862 Rp.16663 610Lt, 4 Doors, Fast Freeze, Active Vita Crisper

= SHOWCASE COOLER =

BRAND TYPE Rp (000) FEATURES

DOMO DS 1200 Rp.2453 200 Lt showcase display cooler, 0 °C-10 °C

DOMO DS 1250 Rp.2757 2543 250 Lt showcase display cooler, 0 °C-10 °C

DOMO DS 1300 Rp.2853 300 Lt showcase display cooler, 0 °C-10 °C

DOMO DS 1400 Rp.3354 400 Lt showcase display cooler, 0 °C-10 °C

GEA EXPO 50 Rp.1491 50 Lt, 2°C – 8°C, fan cooling system, 1shelf

GEA EXPO 90 Rp.1991 90 Lt, 2°C – 8°C, fan cooling system, 4 shelves

GEA EXPO 136 Rp.2221 136 Lt, 2°C – 8°C, fan cooling system, 3 shelves

GEA EXPO 218HS Rp.2951 210 Lt, 2°C – 8°C, fan cooling system, 4 shelves

GEA EXPO 268HS Rp.3076 260 Lt, 2°C – 8°C, fan cooling system, 5 shelves

GEA EXPO 280P Rp.3471 280 Lt, 2°C – 8°C, No Frost Premium series, 4 shelves

GEA EXPO 368HS Rp.3481 360 Lt, 2°C – 8°C, fan cooling system, 5 shelves

GEA EXPO 450P Rp.5476 400 Lt, 2°C – 8°C, No Frost Premium series, 5 shelves

GEA EXPO 480 Rp.6332 6221 480 Lt, 2°C – 8°C, No Frost Premium, 6 shelves

GEA EXPO 200 Rp.- 200 Lt, 2°C – 8°C, fan cooling system, 3 shelves

GEA EXPO 250 Rp.- 250 Lt, 2°C – 8°C, fan cooling system, 5 shelves

GEA EXPO 350 Rp.- 350 Lt, 2°C – 8°C, fan cooling system, 5 shelves

GEA EXPO 420DD Rp.- 420 Lt, 2°C – 8°C, fan cooling system, 5 shelves

MODENA SC-1130 Rp.2048 130 Lt showcase display cooler, 0 °C-10 °C

MODENA SC-1150 Rp.2281 150 Lt showcase display cooler, 0 °C-10 °C

MODENA SC-1180 Rp.2423 180 Lt showcase display cooler, 0 °C-10 °C

MODENA SC-1200 Rp.- 200 Lt showcase display cooler, 0 °C-10 °C

MODENA SC-1260 Rp.3740- 2953 260 Lt showcase display cooler, 0 °C-10 °C

MODENA VM-1320 Rp.- 320 Lt showcase display cooler, 0 °C-10 °C
 MODENA VM-1350 Rp.3583 350 Lt showcase display cooler, 0 °C-10 °C
 MODENA VM-1380 Rp.- 380 Lt showcase display cooler, 0 °C-10 °C
 MODENA VM-1410 4982 4084 410 Lt showcase display cooler, 0 °C-10 °C
 POLYTRON SCP-122LE Rp.2328 Big capacity, Non CFC, Low energy consumption
 POLYTRON SCP-123 Rp.2448 Big capacity, Non CFC, Low energy consumption, Bottle opener
 POLYTRON SCP-150 Rp.2528 180 Lt, Non CFC, Low energy consumption, 540x660x1525mm
 POLYTRON SCP-151 Rp.2559 Big capacity, Non CFC, Low energy consumption, Bottle opener
 POLYTRON SCP-156T Rp.2480 170Lt, IPM LED Timer, 3 Shelves
 POLYTRON SCP-157T Rp.2580 170Lt, IPM LED Timer, 3 Shelves, Bottle opener, Door handle
 POLYTRON SCP-161 Rp.2728 180 Lt, 3 Shelves, Bottle opener, No Frost
 POLYTRON SCP-1170 Rp.2687 230 Lt, Non CFC, Low energy consumption, 540x660x1785mm
 POLYTRON SCP-1171 Rp.2788 Big capacity, Non CFC, Low energy consumption, Bottle opener
 POLYTRON SCP-1181 Rp.2968 230 Lt, 4 Shelves, Bottle opener, No Frost
 SANSIO SAN-238SC Rp.3543 4 Shelves, 55 x 54 x 177 cm
 SANSIO SAN-288SC Rp.3853 4 Shelves, 58 x 61 x 182 cm
 SANSIO SAN-368SC Rp.4283 4 Shelves, 58 x 61 x 198 cm
 SANSIO SAN-278SC Rp.4543 4 Shelves Premium series display showcase cooler
 SANSIO SAN-378SC Rp.4993 5 Shelves Premium series display showcase cooler
 SANSIO SAN-248 Rp.- 248 Lt, 4 Shelves, Premium series display showcase cooler
 SANSIO SAN-338 Rp.- 338 Lt, 5 Shelves, Premium series display showcase cooler
 SANSIO SAN-428SC Rp.5733 408 Lt, 5 Shelves, Premium series display showcase cooler
 SANSIO SAN-888 Rp.8943 888 Lt, 2 Doors, 10 Shelves, 0° to +10°C
 SANSIO SAN-1188 Rp.9953 1188 Lt, 2 Doors, 10 Shelves, 0° to +10°C
 SANSIO SAN-1488 Rp.1488 Lt, 2 Doors, 10 Shelves, 0° to +10°C
 Back to top
 = CHEST FREEZER =
 BRAND TYPE Rp (000) FEATURES
 DOMO DF 1100 Rp.1644 100 Lt chest freezer, - 18°C
 DOMO DF 1155 Rp.1829 155 Lt chest freezer, - 18°C
 DOMO DF 1205 Rp.2044 205 Lt chest freezer, - 25°C
 DOMO DF 1300 Rp.2734 300 Lt chest freezer, - 25°C
 GEA AB-108 Rp.1972 105 Lt, - 28°C, Lock
 GEA AB-201TX Rp.2629 194 Lt, - 28°C, Lock
 GEA AB-201TC Rp.3081 194 Lt, - 28°C, Lock, suhu bisa dirubah ke chiller +2° s/d +8°C
 GEA AB-271 Rp.3151 295 Lt, - 28°C, Lock
 GEA AB-396T Rp.4121 386 Lt, - 28°C, Lock
 GEA AB-506T Rp.4831 492 Lt, - 28°C, Lock
 GEA AB-600T Rp.5341 607 Lt, - 28°C, Lock
 GEA AB-600TC Rp.6521 607 Lt, - 28°C, Lock
 GEA AB-750T Rp.5961 750 Lt, - 28°C, Lock
 MODENA MD-10 Rp.2188 100 Lt chest freezer, - 25°C
 MODENA MD-15 Rp.2383 155 Lt chest freezer, - 25°C

MODENA MD-20A Rp.2695 205 Lt chest freezer, - 25°C
MODENA MD-30 Rp.3883 300 Lt chest freezer, - 25°C
MODENA MD-45 Rp.5033 450 Lt chest freezer, - 25°C
MODENA MD-60 Rp.5433 600 Lt chest freezer, - 25°C
MODENA MD-75 Rp.6783 750 Lt chest freezer, - 25°C
MODENA MD-95 Rp.8983 950 Lt chest freezer, - 25°C
SANSIO SAN-148F Rp.2033 142 Lt, Temperatur range: -25° to -32°C
SANSIO SAN-218F Rp.2543 215 Lt, Temperatur range: -25° to -32°C
SANSIO SAN-318F Rp.3343 318 Lt, Temperatur range: -25° to -32°C
SANSIO SAN-418F Rp.4543 418 Lt, Temperatur range: -25° to -32°C
SANSIO SAN-518F Rp.5653 518 Lt, Temperatur range: -25° to -32°C
SANSIO SAN-618F Rp.5399 618 Lt, Temperatur range: -25° to -32°C
SANSIO SAN-818F Rp.7273 818 Lt, Temperatur range: -25° to -32°C
SANSIO SAN-1288F Rp.- 1188 Lt, Temperatur range: -25° to -32°C
SANYO SF-C11KW Rp.1939 108 Lt, Key lock, Non CFC
SANYO SF-C15KW Rp.2039 150 Lt, Key lock, Non CFC
SANYO SF-C18KW Rp.2139 178 Lt, Key lock, Non CFC
SANYO SF-C21KW Rp.2439 208 Lt, Key lock, Non CFC
SANYO SF-C24KW Rp.2669 245 Lt, Key lock, Non CFC
SANYO SF-C30KW Rp.3249 298 Lt, Key lock, Non CFC

Back to top

= SLIDING GLASS FREEZER =

BRAND TYPE Rp (000) FEATURES

GEA SD-100 Rp.1871 Sliding flat glass,100 Lt, -18 to - 25°C
GEA SD-132P Rp.2191 Sliding flat glass,132 Lt, -18 to - 25°C
GEA SD-186 Rp.2371 Sliding flat glass,186 Lt, -18 to - 25°C
GEA SD-260BY Rp.3891 Sliding curve glass, 260 Lt, -15 to - 20°C
GEA SLD-200 Rp.3172 Sliding curve glass, 200 Lt, -18 to - 25°C
GEA SLD-258 Rp.- Sliding curve glass, 258 Lt, -18 to - 25°C
GEA SLD-308 Rp.4122 Sliding curve glass, 308 Lt, -18 to - 25°C
GEA SLD-388 Rp.4922 Sliding curve glass, 388 Lt, -18 to - 25°C
MODENA MC-23 Rp.4012 Sliding curve glass, 230 Lt freezer, - 25°C
MODENA MC-30 Rp.4627 Sliding curve glass, 300 Lt freezer, - 25°C
SANSIO SAN-268SF Rp.3683 Sliding curve glass, 268 Lt, -18° to -25°C
SANSIO SAN-308SF Rp.4383 Sliding curve glass, 308 Lt, -18° to -25°C
LG GN-V262RVC 260 lt, Vit + Ion, Multi Airflow Cooling System
LG GN-V282RLC 290 lt, , Multi Airflow, Moist Balance Crisper –
LG GN-V282RLCT 253 lt, Vitamin Plus, Moist Balance Crisper
LG GN-V282RVC 290 lt, Vit + Ion, Multi Airflow Cooling System –
LG GN-V282RNB 290 lt, Vit + Ion, Multi Airflow Cooling System –
LG GN-B352CLC 291lt Nett capacity, Vitamin Plus, Ion Carbon Deodoriser
LG GN-B352YVC 350 lt, Bio Shield, Green Ion Door Cooling, Vitamin Plus
LG GN-B392CLC 321lt Nett capacity, Vitamin Plus, Ion Carbon Deodoriser
LG GN-B392YLC 380 lt, Bio Shield, Vitamin Plus, Green Ion deodorizer
LG GN-B492CLC 393 lt Nett capacity, Vitamin Plus, Ion Carbon Deodoriser
LG GN-M352CLN 288 lt Nett capacity, Bio Shield, Vitamin Plus, LED display
LG GN-M352CPC 288 lt Nett capacity, Door Cooling, Vit Plus, Green Ion Deo, Flora finishing
LG GN-M352YPC 315 lt, Bio Shield, Vitamin Plus, Green Ion deodorizer –
LG GN-M392CPC 318 lt Nett capacity, Door Cooling, Vit Plus, Green Ion Deo, Flora

finishing

LG GN-M392YLQ 346 lt, Bio Shield, Vitamin Plus, Green Ion door cooling –
LG GN-M392YPC 346 lt, Bio Shield, Vitamin Plus, Green Ion deodorizer –
LG GN-M492CLN 388 lt Nett capacity, Bio Shield, Vitamin Plus, LED display
LG GN-M492CPC 388 lt Nett capacity, Door Cooling, Vit Plus, Green Ion Deo, Flora

finishing

LG GN-M492YPC 422 lt, Bio Shield, Vitamin Plus, Green Ion deodorizer –
LG GR-B352CLC 350 lt, Bio Shield, Vitamin Plus, Z-Deodoriser
LG GR-B392YLC 339 lt, Green Ion Door Cooling, Vitamin Plus, Deo –
LG GR-B492CLC 470 lt, Bio Shield, Vitamin Plus, Z-Deodoriser
LG GR-B492YLC 393 lt, Bio Shield, Vitamin Plus, Z-Deodorizer –
LG GR-B562YLC 428 lt, Bio Shield, Vitamin Plus, Carbon deodorizer
LG GR-B602YLC 660 lt, Bio Shield, Vitamin Plus, Carbon deodorizer
LG GR-M562YSQ 423 Lt netto, Wide LED Temperature Control, Vitamin Plus, Green ion Deodorizer
LG GR-M602YSQ 463 Lt netto, Wide LED Temperature Control, Vitamin Plus, Green ion Deodorizer
LG GR-M652YSQ 566 Lt, Wide LED Temperature Control, Vitamin Plus, Green ion Deodorizer
LG GR-M712YLA 710 Lt, Wide LED Temperature Control, Vitamin Plus, Green ion Deodorizer, Door Alarm –
LG GR-M712YSQ 640 Lt, Wide LED Temperature Control, Vitamin Plus, Green ion Deodorizer

PANASONIC NR-B21KX 200 lt, 99w, Organix Antibacteria Cassette,
PANASONIC NR-B23CF-S 195 lt, 99w, DEON (Honey Comb Deodorizer & Ion)
PANASONIC NR-B25BF-S 229 lt, 110w, DEON (Honey Comb Deodorizer & Ion)
PANASONIC NR-B25GF-S 229 lt, 110w, DEON (Honey Comb Deodorizer & Ion)
PANASONIC NR-B203G 204 lt, MagicTop, N- Bio Deodorizer
PANASONIC NR-B243G 234 lt, MagicTop, N-Bio Deodorizer
PANASONIC NR-B283G 279 lt, MagicTop, N-Bio Deodorizer
PANASONIC NR-B363M 355 lt, Multi Hygienic System , MagicTop
PANASONIC NR-B403V Import/Complete Built-up, 395lt, MagicTop, Inverter
PANASONIC NR-B591 Import/Complete Built-up, 506 lt, MagicTop –
PANASONIC NR-BW414VSWA 418 lt, Inverter – saving 40% energy, MagicTop
PANASONIC NR-BW464VSWA 463 lt, Inverter – saving 40% energy, MagicTop
PANASONIC NR-BY551XSWA 495 lt, Inverter – saving 40% energy, MagicTop
PANASONIC NR-BW601XSWA 546 lt, Inverter – saving 40% energy, MagicTop
SAMSUNG RT-2A SDIS 230 Lt, Cool Pack, Silver Nano deodorizer
SAMSUNG RT-2A SATS 230 Lt, Cool Pack, Silver plus deodorizer
SAMSUNG RT-2A SDSS 230 Lt, Cool Pack, Silver Nano deodorizer
SAMSUNG RT-2A SDTS 230 Lt, Cool Pack, Silver plus deodorizer
SAMSUNG RT-2B SATS 280 Lt, Cool Pack, Silver Plus deodorizer, Coolever zone
SAMSUNG RT-2B SDTS 280 Lt, Cool Pack, Silver Nano deodorizer, Coolever zone
SAMSUNG RT-30SCTS 300 Lt, Big Plus, Cool Pack, Silver Plus deodorizer
SAMSUNG RT-30SSIS 300 Lt, Evergreen Zone, Cool Pack, Silver Plus deodorizer
SAMSUNG RT-30SSPN 300 Lt, Evergreen Zone, UV Chilled Room, Silver Plus deo
SAMSUNG RT-37SCTS 370 Lt, Big Plus, Cool Pack, Silver Plus deodorizer
SAMSUNG RT-37SSPN 370 Lt, Evergreen Zone, UV Chilled Room, Silver Plus deo
SAMSUNG RT-41MAIS 410 Lt, i-Cool, Coolever Zone, Silver Nano deodorizer
SAMSUNG RT-45MAIS 450 Lt, i-Cool, Coolever Zone, Silver Nano deodorizer

SANYO SR-D225N 179 lt, Nano Ferrite Filter, Carbon deodorizer
SANYO SR-D245N 216 lt, Nano Ferrite Filter, Carbon deodorizer
SHARP SJ-F201S-RD SAMURAI series, 170 lt, Anti bacteria
SHARP SJ-F231S-RD SAMURAI series, 180 lt, Anti bacteria
SHARP SJ-F200G Fresh Lemon Series Refrigerator, Low Voltage –
SHARP SJ-F200M Fresh Lemon Series Refrigerator, Low Voltage –
SHARP SJ-F201G Fresh Lemon Series Refrigerator, Low Voltage –
SHARP SJ-F201M Fresh Lemon Series Refrigerator, Low Voltage –
SHARP SJ-F231G Fresh Lemon Series Refrigerator, Low Voltage –
SHARP SJ-F231M Fresh Lemon Series Refrigerator, Low Voltage –
SHARP SJ-D22LV-SL 195 lt, Lemon Series Refrigerator, Low Voltage
SHARP SJ-D27LV-SL 210 lt, Lemon Series Refrigerator, Low Voltage
SHARP SJ-D30LV-SL 235 lt, Lemon Series Refrigerator, Low Voltage
SHARP SJ-291NLV-SL 260 lt, Lemon Series Refrigerator, Low Voltage –
SHARP SJ-351NLV-SL 300 lt, Lemon Series Refrigerator, Low Voltage
SHARP SJ-431NLV-SL 320 lt, Lemon Series Refrigerator, Low Voltage
SHARP SJ-460NLV 367 lt, SALSA Series Refrigerator, Nano Deodorizer –
SHARP SJ-461NLV 367 lt, SALSA Series Refrigerator, Hybrid Cooling System
SHARP SJ-P450NLV 370 lt, Plasmacluster Ion System
SHARP SJ-P461NLV 443 lt, SALSA Series Refrigerator, Plasmacluster Ion System
SHARP SJ-560NLV 367 lt, SALSA Series Refrigerator, Nano Deodorizer –
SHARP SJ-561NLV 397 lt, SALSA Series Refrigerator, Hybrid Cooling System
SHARP SJ-P510NLV 409 lt, Plasmacluster Ion System
SHARP SJ-P561NLV 478 lt, SALSA Series Refrigerator, Plasmacluster Ion System
SHARP SJ-580NLV 437 lt, SALSA Series Refrigerator, Hybrid Cooling System –
SHARP SJ-P580NLV 375 lt, Lemon Series no frost with plasma cluster
SHARP SJ-P581NLV 437 lt, SALSA Series Refrigerator, Hybrid Cooling System,
Plasmacluster, Advance LEC Control, Nano Deodorizer
SHARP SJ-650NLV 473 lt, SALSA Series Refrigerator, Hybrid Cooling System –
SHARP SJ-P651NLV 473 lt, SALSA Series Refrigerator, Hybrid Cooling System,
Plasmacluster, Advance LEC Control, Nano Deodorizer
SHARP SJ-750NLV 514 lt, SALSA Series Refrigerator, Hybrid Cooling System –
SHARP SJ-P750NLV 514 lt, SALSA Series Plasmacluster Refrigerator –
SHARP SJ-P751NLV 514 lt, SALSA Series Refrigerator, Hybrid Cooling System,
Plasmacluster, Advance LEC Control, Nano Deodorizer
SHARP SJ-P812NLV 524 lt, Plasmacluster Ion System –
SHARP SJ-850NLV 555 lt, SALSA Series Refrigerator, Hybrid Cooling System –
SHARP SJ-P851NLV 555 lt, SALSA Series Refrigerator, Hybrid Cooling System,
Plasmacluster, Advance LEC Control, Nano Deodorizer
TOSHIBA GR-K242 180 lt, 75W
TOSHIBA GR-K242PD 180 lt, 75W, Platinum Deodorizer
TOSHIBA GR-K262 216 lt, 90W
TOSHIBA GR-K262PD 216 lt, 90W, Platinum Deodorizer
TOSHIBA GR-M245E 180 lt, No Frost
TOSHIBA GR-M245D 180 lt, No Frost, Deodorizer
TOSHIBA GR-M265D 216 lt, No Frost, Deodorizer
TOSHIBA GR-R21ET Import, 180 lt, Health series, Platinum Deodorizer
TOSHIBA GR-R25ET Import, 228 lt, Health series, Platinum Deodorizer
TOSHIBA GR-R34ED Import/Complete Built-up, 280 lt, Hybrid Plasma Deo
TOSHIBA GR-R39ED Import/Complete Built-up, 320 lt, Hybrid Plasma Deo

TOSHIBA GR-RG43ED Import, 355 lt, Hybrid Plasma Deo, Glass door
TOSHIBA GR-R48ED Import, 401 lt, Hybrid Plasma Deo
TOSHIBA GR-RG48ED Import, 410 lt, Hybrid Plasma Deo, Glass door
TOSHIBA GR-R58ED Import/Complete Built-up, 500 lt, Hybrid Plasma Deo
TOSHIBA GR-R66ED Import/Complete Built-up, 590 lt, Hybrid Plasma Deo
TOSHIBA GR-RG58ED Import, 500 lt, Hybrid Plasma Deo, Glass door
TOSHIBA GR-RG66ED Import, 590 lt, Hybrid Plasma Deo, Glass door
KULKAS 3 PINTU / 3 DOORS REFRIGERATOR
ELECTROLUX ETB-2603PC Deo Fresh Active, Multi Airflow System
TOSHIBA GR-R47EDV Import/Complete Built-up, 3 doors, 470 lt
SIDE-BY-SIDE REFRIGERATOR
ELECTROLUX ERE-6100SX 580 lt, Fully Electronic Control with LCD Display, Wine rack
LG GR-A207WPJ 581 lt, Green LED, In-Door Ice Maker
LG GR-B207FLC 581 lt, Bio Shield, Moist Balance™ Crisper
LG GR-B207WLQ 581 lt, LED Temperature Control, Bio Shield
LG GR-B217LGJ 581 lt, LED Temperature Control, Bio Shield Flower Pattern
LG GR-L207WLK 567 lt, Tall Ice & Water Dispenser
LG GR-R207WTC 584 lt, Electric Control with 6 Sensor



Private Picture Copyright : WWW.MBSM.PRO

Mbsm_dot_pro_private_PDF_lg-gr-b562ylc-owner-s-manualTélécharger



REFRIGERATOR-FREEZER
MODEL No.: GR-B562YLC

CLIMATE CLASS	T
RATING	220V ~ 50/60Hz
RATED CURRENT	0.6A
DEFROSTING INPUT	230W
RATED INPUT OF HEATER CORD	165W
RATED INPUT MAXIMUM OF LAMP	
FREEZER COMPARTMENT	20W
FRESH FOOD COMPARTMENT	30W
INSULATION BLOWING AGENT	Cyclopentane
NET WEIGHT	85kg
REFRIGERANT	R134a 135g
DIMENSIONS	755(W)x707(D)x1777(H)mm
SERIAL No.:	Refer to bar code label.

MADE IN INDONESIA

MEZ40001987

Private Picture Copyright : WWW.MBSM.PRO

Application Deep Freezer	MA88LAEP
Fridge Compressor – Capacity	410 – 450 liters
Displacement	8.8
Cooling Capacity	235 (kcal/h), 273W, 933 (Btu/h), 0.367HP
Input Power	227W
COP W/W	1.2
EER Btu/Wh	4.11
Motor type	CSIR-Relay
Starting Device (PTC)	QL2-5-55
Motor Protector (OLP)	4TM314TFB
(Capacitor) Starting/Surge Voltage	50 / 275
(OIL) Viscosity cst/ Qty(cc)	22/220
Cooling type	FC
Compressor Height	177mm

Net Weight

9.3 kg.

Embraco, NBT1118Z, Refrigerator, Freezer, Compressor, 1/4 HP, R134a, LBP, RSCR

Category: compressor

written by www.mbsm.pro | 19 December 2021

Réfrigérant: R-134a

Application: LBP

Fréquence: 50Hz

Déplacement: 8.40cm³ / 0.51in³

B.OM : 298BA

Tension / Fréquence: 220-240V 50Hz 1 ~

Type de moteur: Démarrage résistif Inductif Run-Resistive Start Capacitive Run
LRA (A): 6.9

Dispositif d'expansion:

Lubrifiant capillaire : Charge: 350cm³,6.2oz³;

Type: polyolester 10

Poids: 10,8 kg, 23,8

lb Hauteur maximale: 200,0 mm, 7,9 pouces

Type de refroidissement: (Refroidissement statique) – le compresseur n'a pas besoin de refroidissement forcé, mais il doit être installé afin de garantir la circulation naturelle de l'air en convection, pour éviter la surchauffe.

Capacité nominale / température d'évaporation, W / ° C (avec une température de température de 54,4 ° C): 150 / -30,204 / -25,271 / -20,352 / -15? 446 / -10,554 / -5

Capacité nominale / température d'évaporation, W / ° C (avec température ambiante de 45 ° C): 165 / -30, 220 / -25,289 / -20,371 / -15? 468 / -10,579 / -5

Point nominal -23,3 ° C : Refroidissement: 225 W, 194 kcal / h;

W. entrée: 151W;

Courant: 0,60A;

EER: 1,49 W / W, 1,28 kcal / hW

Détails techniques

220/240V 50Hz

puissance 1/4L – cylindrée 8,40 cc

gaz R134a LBP

ASPERA

MONDIAL FRAMEC

Mondial FramecArmoireréfrigérée BRI0 ICE 4 SK, KIC N40 R134A EBA210815, KIC NX40 R134A EBA210813

...et d'autres dispositifs

NBT1118Z-RSCR – ASPERA

NBT1118Z-RSCR – EMBRACO

LF3070231 – GEV – MONDIAL FRAMEC

...numéros de fabricant supplémentaires possibles



Mbsm_dot_pro_private_PDF_NBT1118Z_Embraco_VerdichterTélécharger

Compresseur R134a / R600a Série AT / ET (170w-260w) Fiche technique

Category: compressor

written by www.mbsm.pro | 19 December 2021

compresseur eta110

PERPLEXITÉ

Voir en détail

Le compresseur ETA110 est un type de compresseur de liquide de refroidissement HuaGuang qui utilise le réfrigérant R600a. Il s'agit d'un compresseur RSIR 1/4HP qui fonctionne à 220-240V et 50Hz avec une faible contre-pression (LBP) de 8kg. Il est couramment utilisé dans les systèmes de réfrigération pour les applications commerciales et industrielles.



5 SOURCES

Afficher la liste

- 1 gastroparts
- 2 gev-en ligne
- 3 nibets
- 4 réfrigérateur-polaire
- 5 okmarts

RAPPORT

quel est le prix du compresseur ETA110

où puis-je acheter le compresseur ETA110

Demander un suivi

Private Picture Copyright : WWW.MBSM.PRO

Fiche technique Dimensions Schéma de câblage

Compresseur R134a / R600a Série AT / ET (170w-260w)

Compresseur à piston à piston hermétique de type alternatif entraîné par un moteur électrique interne. Eco-friendly conçu sans chlore pour protéger l'ozone. Haute efficacité et économie d'énergie. Démarrage facile Haute fiabilité Faible son et longévité. Avec relais PTC

compresseur eta110

PERPLEXITÉ

Voir en détail

Le compresseur ETA110 est un type de compresseur de liquide de refroidissement HuaGuang qui utilise le réfrigérant R600a. Il s'agit d'un compresseur RSIR 1/4HP qui fonctionne à 220-240V et 50Hz avec une faible contre-pression (LBP) de 8kg. Il est couramment utilisé dans les systèmes de réfrigération pour les applications commerciales et industrielles.

5 SOURCES

Afficher la liste

- 1 gastroparts
- 2 gev-en ligne
- 3 nibets
- 4 réfrigérateur-polaire
- 5 okmarts

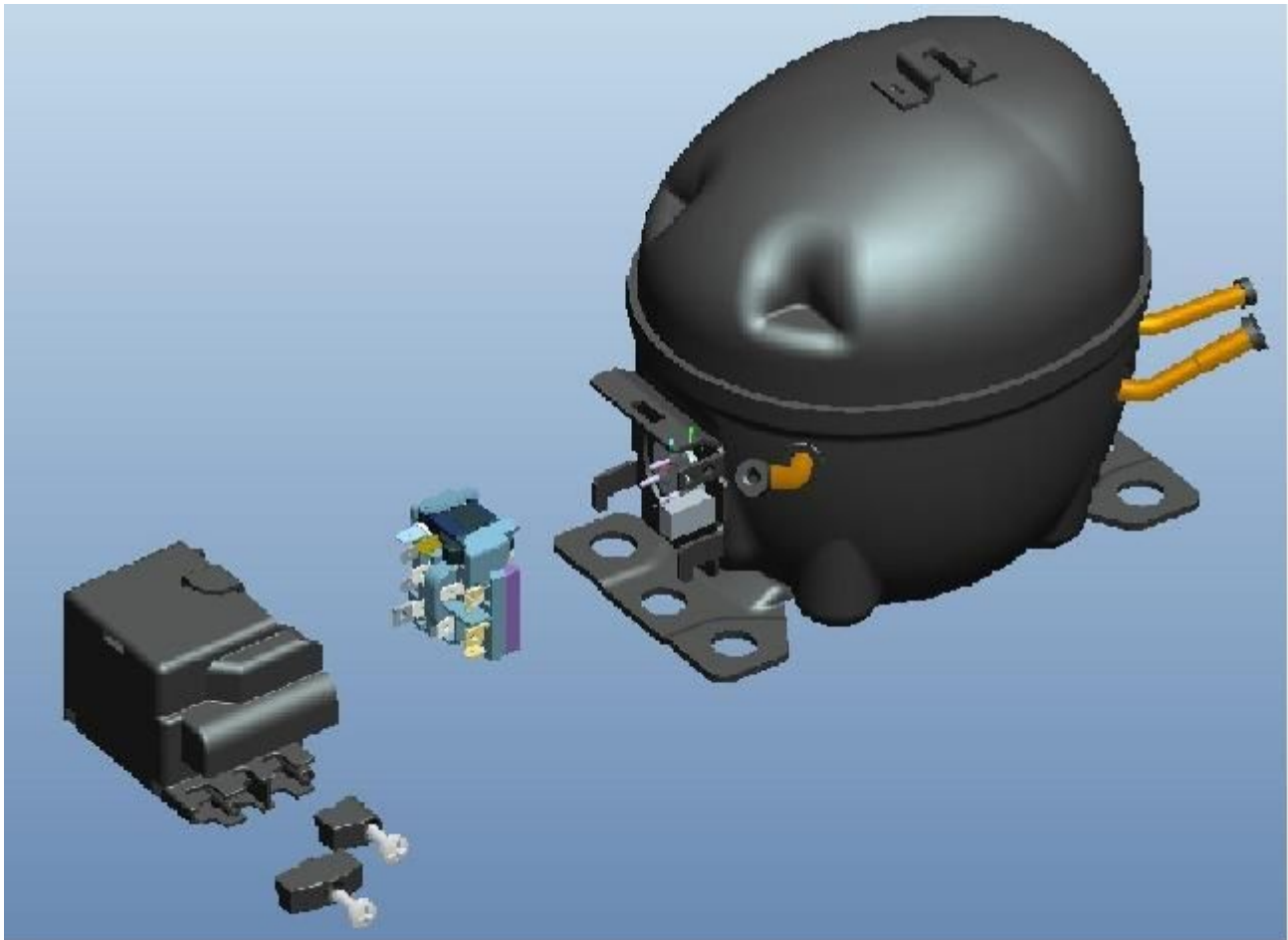
RAPPORT

quel est le prix du compresseur ETA110

où puis-je acheter le compresseur ETA110

Demander un suivi

Private Picture Copyright : WWW.MBSM.PRO



Private Picture Copyright : WWW.MBSM.PRO

LBP , 1/5Hp, HIGHLY, compressor, C-BF061L4A, Low Voltage start 160V-260V, RSIR/RSCR, 170W

Category: compressor

written by www.mbsm.pro | 19 December 2021

LBP , 1/5Hp, HIGHLY, compressor, C-BF061L4A, Low Voltage start 160V-260V, RSIR/RSCR, 170W

Tecumseh ,Compressor Az1355D, 1/6Hp , R12 ,réfrigérateur

Category: Technologie,Tester ok

written by www.mbsm.pro | 19 December 2021

Tecumseh ,Compressor Az1355D, 1/6Hp , R12 ,réfrigérateur

Tableau de conversion d'unités

Category: Technologie

written by www.mbsm.pro | 19 December 2021

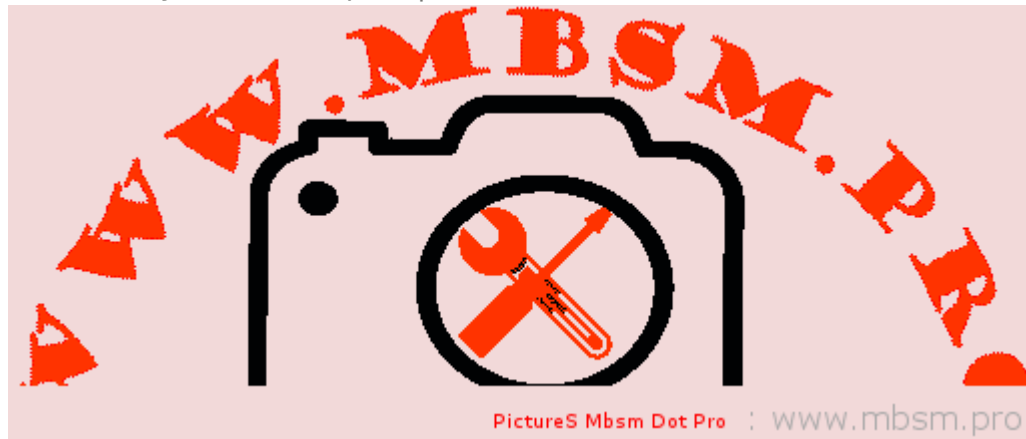


Tableau de conversion d'unités