

# Mbsm.pro, Compressor, NLE12.6MF.2, SECOP, 105G6387, DANFOSS, R134a, 1/2 Hp, lbp

Category: compressor

written by [www.mbsm.pro](http://www.mbsm.pro) | 23 September 2022



Private Picture Copyright : [WWW.MBSM.PRO](http://WWW.MBSM.PRO)

Mbsm.pro, Compressor, NLE12.6MF.2, SECOP, 105G6387, DANFOSS, R134a, 1/2 Hp, lbp

---

# Mbsm.pro, compressor, ACC, CUBIGEL, Zem, GL70Ah, 1/5 hp, lbp

Category: compressor

written by [www.mbsm.pro](http://www.mbsm.pro) | 23 September 2022

**ZEM** 6 GL 70 AH 3728  
R 134a CE 220-240V~ 50HZ  
BERB APPROVAL NF DE KEMA KEUR  
1 537  
0099640 8

Private Picture Copyright : [WWW.MBSM.PRO](http://WWW.MBSM.PRO)

Mbsm.pro, compressor, ACC, CUBIGEL, Zem, GL70AA, 1/5 hp, lbp

---

Mbsm.pro, Cubigel, MLY90LA,  
CAE44/9450Z, SC10DL, NEK6210GK,  
professional, refrigeration,  
compressor, 3/8 Hp++, 1/2 hp-, R404A  
/ R507, freezer, Ae1420zf, 625 L

Category: compressor

written by www.mbsm.pro | 23 September 2022



Private Picture Copyright : WWW.MBSM.PRO

Mbsm.pro, Cubigel, MLY90LA, CAE44/9450Z, SC10DL, NEK6210GK, professional,  
refrigeration, compressor, 3/8 Hp++, 1/2 hp-, R404A / R507, freezer, Ae1420zf,  
625 L

---

Mbsm.pro, SC10DL, Compressor, R-404A,  
R-507A, 3/8 HP++, 1/2 hp-, MHBP

Category: compressor

written by www.mbsm.pro | 23 September 2022



OPPO F9  
2021/08/12 20:21

# Mbsm.pro, Comparison between Freon 22 and Freon 410a

Category: pro

written by [www.mbsm.pro](http://www.mbsm.pro) | 23 September 2022

## The Refrigerant Rundown



### R-22

- Often referred to by a brand name like "Freon"
- Discontinued for use in new AC systems in 2010
- Is a hydro-chlorofluorocarbon (HCFC), which contributes to ozone depletion
- Does not absorb as much heat, meaning there is a higher risk for AC compressor burnout due to overheating



### R-410A

- Often referred to by a brand name like "Puron"
- Approved for use in new residential air conditioners
- Is a hydro-fluorocarbon (HFC), which does not contribute to ozone depletion
- Absorbs and releases more heat so your AC compressor can run cooler, reducing the risk of compressor burnout

# Mbsm.pro, Compressor, Gold, cfn120g , Capacitor 64 $\mu$ F, 3/8 hp, hbp

Category: pro

written by [www.mbsm.pro](http://www.mbsm.pro) | 23 September 2022



SHOT ON REDMI 9  
AI QUAD CAMERA

Mbsm.pro, Compressor, Gold, cfn120g , Capacitor 64  $\mu$ F

---

# Mbsm.pro, Pictures, 4-door Sharp refrigerator card

Category: Pictures

written by [www.mbsm.pro](http://www.mbsm.pro) | 23 September 2022



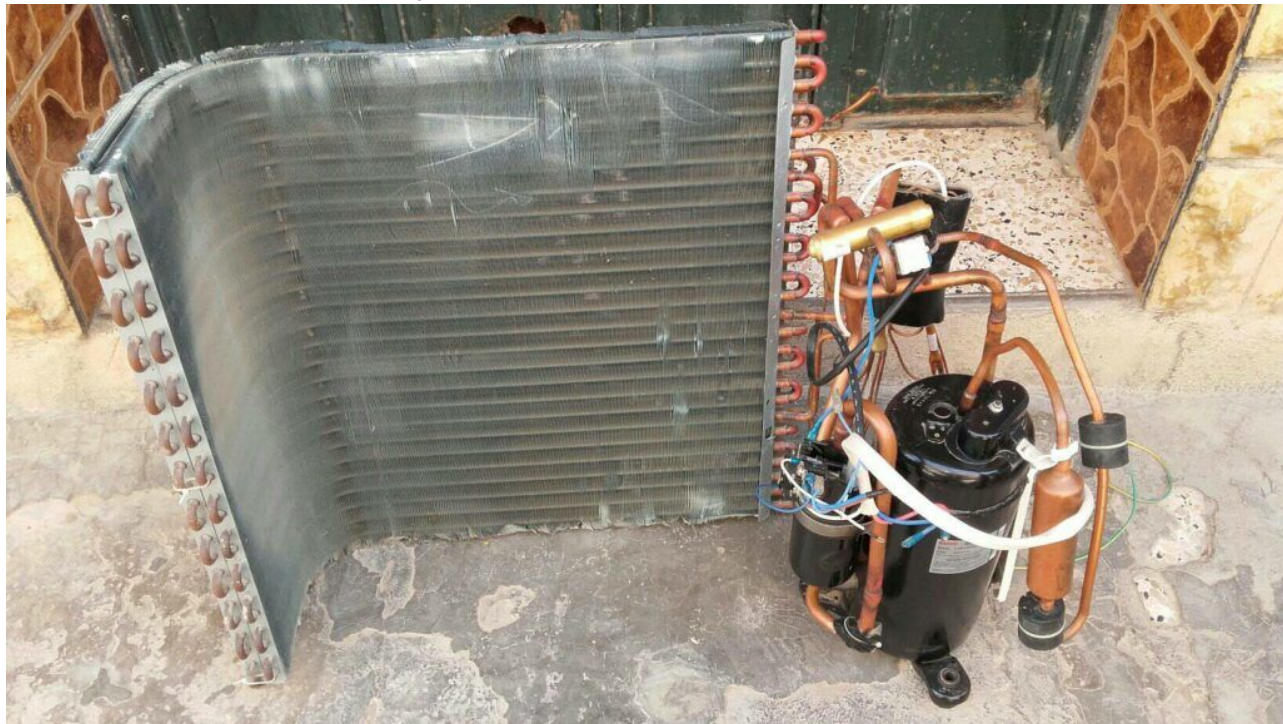
Mbsm.pro, Pictures, 4-door Sharp refrigerator card

---

## Mbsm.pro, Air conditioner, Compressor, 24000 btu, 3RV416H2AAF, R-22, 220-240V, Sanyo

Category: compressor

written by [www.mbsm.pro](http://www.mbsm.pro) | 23 September 2022



Private Picture Copyright : [WWW.MBSM.PRO](http://WWW.MBSM.PRO)

Mbsm.pro, Air conditioner, Compressor, 24000 btu, 3RV416H2AAF, R-22, 220-240V,  
Sanyo

---

## Mbsm.pro, Air conditioner, AUX ASW- H09A4, 9000 btu

Category: air conditioner

written by [www.mbsm.pro](http://www.mbsm.pro) | 23 September 2022



Private Picture Copyright : WWW.MBSM.PRO

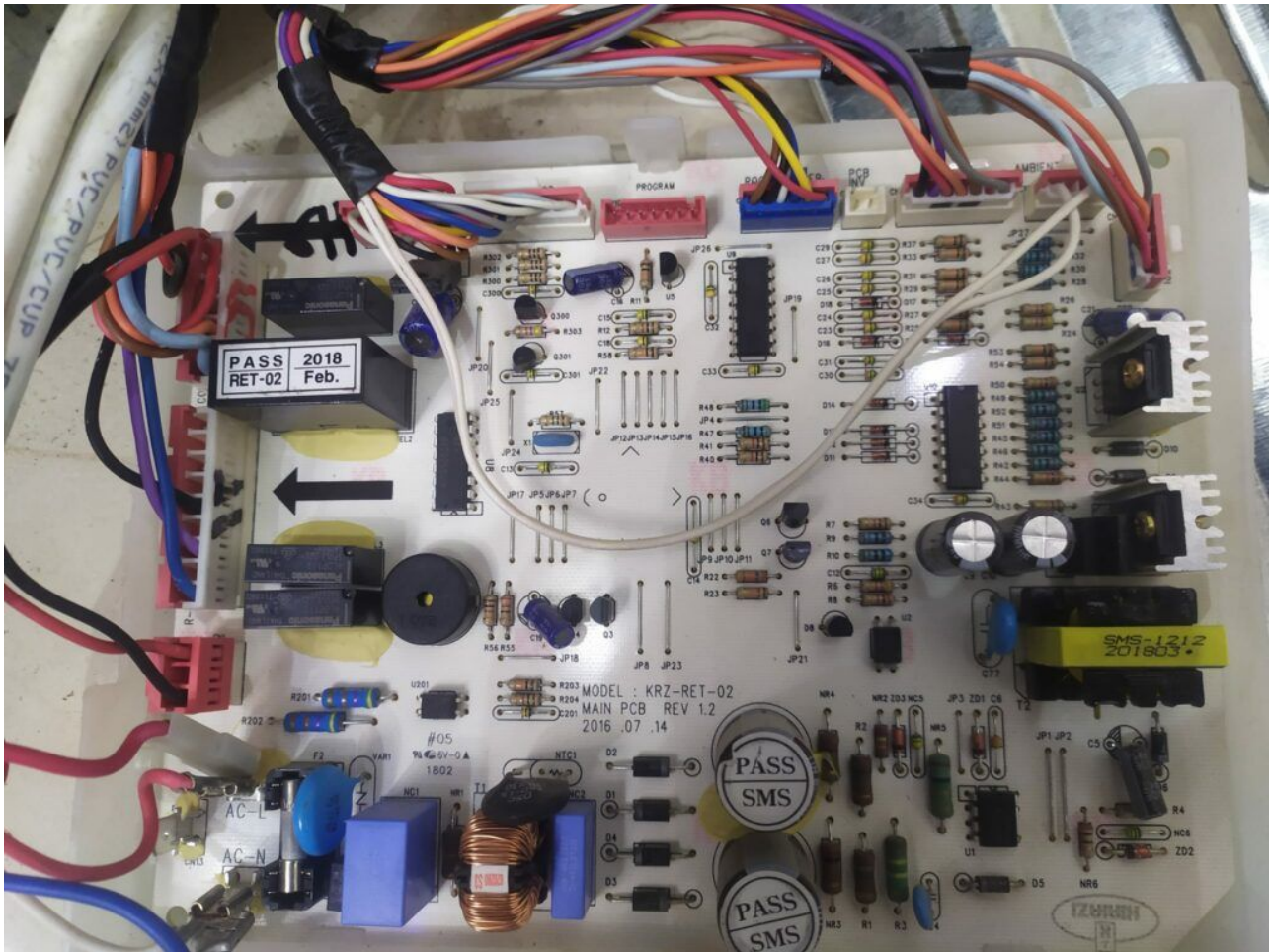
Mbsm.pro, Air conditioner, AUX ASW-H09A4, 9000 btu

---

Mbsm.pro, KIRIAZI, KH690LN/15,  
(INVERTER), REFRIGERATOR, NO FROST,  
690 L, 27 feet

Category: Refrigerator

written by www.mbsm.pro | 23 September 2022



Private Picture Copyright : [WWW.MBSM.PRO](http://WWW.MBSM.PRO)

Mbsm.pro, KIRIAZI, KH690LN/15, (INVERTER), REFRIGERATOR, NO FROST, 690 L, 27 feet