

Mbsm.pro, compressor, Highly,
hitachi, rotary, SHX33 , shx33sc4-u,
2.5 hp, 17750 btu, R22

Category: compressor

written by Jamila | 15 November 2022




Private Picture Copyright : WWW.MBSM.PRO

Mbsm.pro, compressor, Highly, hitachi, rotary, SHX33 , 2 hp, 17750 btu, R22

Mbsm.pro, Danfoss, Reciprocating, compressor, NLX11KK.2, 105H6971, NLX11KK.2 105H6971, 1/4 hp++, 1/3 hp-, r600a

Category: compressor

written by mahdi miled | 15 November 2022



			-35	-30	-20	-15	-10	-5	0	5	[W]	[W/W]	[W/W]	[W]	[kcal/h]	[W/W]	[kcal/Wh]		
Energy optimized	1.	PLE35K	101H0360			38	52	68	87	109		27		0.68	38	33			
		TLES4KK.3	102H4438	19	29	57	75	96				42	0.90		57	49	1.18		
		TLES4.8KK.3	102H4538	28	40	73	94	119				55	1.00		74	65	1.30		
		TLES5.7KK.3	102H4638	36	50	89	114	144				68	1.02		91	79	1.32		
		TLES6.5KK.3	102H4738	45	61	105	134	168				81	1.02		108	94	1.31		
		TLES7.5KK.3	102H4838	53	71	122	155	194				94	1.02	1.07	126	108	1.32	1.14	
		TLES8.7KK.3	102H4938	62	83	143	181	228				110	1.03	1.08	147	126	1.33	1.14	
		TLES10KK.3	102H4038									130	1.04		172	148	1.35	1.15	
		NLE8.8KK.4	105H6800	63	84	141	179	223				110	1.18	1.22	147	127	1.51	1.30	
		NLE10KK.4	105H6867	74	98	164	207	257				128	1.19	1.23	170	151	1.51	1.30	
		NLE13KK.4	105H6952	82	109	184	232	290				143	1.19	1.22	191	165	1.52	1.31	
		NLE13KK.4	105H6959	99	131	217	274	340				170	1.18	1.23	226	194	1.50	1.29	
		NLE15KK.4	105H6968	110	146	243	307	382				190	1.20	1.25	253	213	1.53	1.32	
	High Energy optimized	1.	TLY4 KK.3	102H4442	19	29	57	74	95				42	0.96	0.99	57	49	1.26	1.08
			TLY4.8KK.3	102H4542	28	40	73	94	119				55	1.04	1.06	74	65	1.35	1.16
TLY5.7KK.3			102H4642	36	51	89	114	144				68	1.03	1.06	91	79	1.33	1.15	
2.		TLY6.5KK.3	102H4742	46	62	106	135	170				82	1.10	1.14	110	94	1.42	1.22	
		TLY7.5KK.3	102H4842	53	71	122	155	194				94	1.09	1.14	126	108	1.41	1.22	
		TLY8.7KK.3	102H4942	65	86	144	182	227				112	1.12	1.16	149	126	1.44	1.24	
3.		TLX4KK.3	102H4447	21	32	59	76	95				45		1.15***	60	52			
		TLX4.8KK.3	102H4547	36	52	90	116	146				57		1.24***	76	65			
		TLX5.7KK.3	102H4647	37	52	91	115	143				70		1.28***	93	80			
		TLX6.5KK.3	102H4747	46	63	106	133	165				83		1.30***	110	95			
		TLX7.5KK.3	102H4847	55	75	125	157	195				98		1.32***	130	112			
		TLX8.7KK.3	102H4947	65	88	146	184	227				115		1.31***	152	131			
		NLX8.8KK	105H6874	60	83	144	182	227				111		1.35	148	127			
		NLX10KK	105H6871	74	100	169	215	269				131		1.36	174	150			
		NLX11KK	105H6984	84	112	189	240	300				147		1.36	195	168			
2.	NLX13KK	105H6983	98	133	223	282	350				174		1.36	231	199				
	NLX15KK	105H6981	110	147	249	317	397				193		1.34	257	221				
	NLX8.0KK.2	105H6010	52	73	130	167	210				99		1.47***	133	115				
	NLX8.8KK.2	105H6011	62	85	147	187	234				113		1.49***	151	130				
	NLX10KK.2	105H6101	75	101	171	217	271				133		1.49***	178	153				
	NLX11KK.2	105H6971	86	115	192	242	301				150		1.49***	200	172				

Private Picture Copyright : WWW.MBSM.PRO

Description

Product details

Gross weight 12.47 kg

Net weight 12.47 kg

Gross weight 12.47 kg

Net weight 12.47 kg

Application energy level

Applications

Auxiliary winding resistance (start winding) for single-phase compressors alt [Ohm]

Base plate type

Brand technique

Capacity control

Colour

Compressor power supply [V/Ph/Hz]

High Energy-optimized

LBP

31.8 Ohm

EU small

Reciprocating compressor

Fixed speed

Black

220-240/1/50

Configuration code	Single
Cut in current LST [A]	6.4 A
Description	NLX11KK.2
Discharge connection angle [°]	21 °
Discharge connection comments	Al-cap
Discharge connection diameter [mm]	5 mm
Discharge connection material	Cu-plated steel
Economizer	No
Free gas volume [cm ³]	2360 cm ³
Frequency [Hz]	50
Height from baseplate [mm]	197 mm
High value of nominal voltage at 50Hz [V]	240 V
High value of voltage range at 50Hz [V]	255 V
Length [mm]	252 mm
Liquid injection	No
Low value of nominal voltage at 50Hz [V]	220 V
Low value of voltage range at 50Hz [V]	187 V
LRA LST [A]	3.5 A
Main winding resistance for single-phase compressors [Ohm]	18.5 Ohm
Model number	NLX11KK.2
Motor type	RSCR
No. of phases (compressor)	1
Oil quantity [cm ³]	270 cm ³
Oil type	POE
Packing format	Industrial pack
Packing quantity	80
Process connection angle [°]	25 °
Process connection comments	Al-cap
Process connection diameter [mm]	6.2 mm
Process connection material	Cu-plated steel
Refrigerant	R600a
Refrigerant charge [kg] [Max]	0.15 kg
RLA	0.70 A
Rotational speed at 50Hz [rpm]	3000 rpm
Run capacitor capacitance	2 µF
Segment usage	Refrigeration LT
Speed Platform	Fixed-speed
Suction connection angle [°]	2 °
Suction connection comments	Al-cap
Suction connection diameter [mm]	6.2 mm
Suction connection material	Cu-plated steel
Swept volume [cm ³]	11.15 cm ³
Technology	Reciprocating
Total height [mm]	203 mm
Type	NL

Type designation	Compressor
Voltage 50Hz [V]	220 V
Voltage 50Hz [V] [Max]	240 V
Width [mm]	166 mm
Winding temperature short term [°C] [Max]	110 °C
Winding temperature stat [°C] [Max]	95 °C
Application energy level	High Energy-optimized
Applications	LBP
Auxiliary winding resistance (start winding) for single-phase compressors alt [Ohm]	31.8 Ohm
Base plate type	EU small
Brand technique	Reciprocating compressor
Capacity control	Fixed speed
Colour	Black
Compressor power supply [V/Ph/Hz]	220-240/1/50
Configuration code	Single
Cut in current LST [A]	6.4 A
Description	NLX11KK.2
Discharge connection angle [°]	21 °
Discharge connection comments	Al-cap
Discharge connection diameter [mm]	5 mm
Discharge connection material	Cu-plated steel
Economizer	No
Free gas volume [cm3]	2360 cm3
Frequency [Hz]	50
Height from baseplate [mm]	197 mm
High value of nominal voltage at 50Hz [V]	240 V
High value of voltage range at 50Hz [V]	255 V
Length [mm]	252 mm
Liquid injection	No
Low value of nominal voltage at 50Hz [V]	220 V
Low value of voltage range at 50Hz [V]	187 V
LRA LST [A]	3.5 A
Main winding resistance for single-phase compressors [Ohm]	18.5 Ohm
Model number	NLX11KK.2
Motor type	RSCR
No. of phases (compressor)	1
Oil quantity [cm3]	270 cm3
Oil type	POE
Packing format	Industrial pack
Packing quantity	80
Process connection angle [°]	25 °
Process connection comments	Al-cap
Process connection diameter [mm]	6.2 mm
Process connection material	Cu-plated steel

Refrigerant R600a
 Refrigerant charge [kg] [Max] 0.15 kg
 RLA 0.70 A
 Rotational speed at 50Hz [rpm] 3000 rpm
 Run capacitor capacitance 2 ÂµF
 Segment usage Refrigeration LT
 Speed Platform Fixed-speed
 Suction connection angle [Â°] 2 Â°
 Suction connection comments Al-cap
 Suction connection diameter [mm] 6.2 mm
 Suction connection material Cu-plated steel
 Swept volume [cm3] 11.15 cm3
 Technology Reciprocating
 Total height [mm] 203 mm
 Type NL
 Type designation Compressor
 Voltage 50Hz [V] 220 V
 Voltage 50Hz [V] [Max] 240 V
 Width [mm] 166 mm
 Winding temperature short term [Â°C] [Max] 110 Â°C
 Winding temperature stat [Â°C] [Max] 95 Â°C
 Refrigerant: R600a, Segment usage: Refrigeration LT, Compressor power supply [V/Ph/Hz]: 220-240/1/50

			-25	-30	-35	-40	-45	-50	0	5	(W)	(W/W)	(W/W)	(W)	(kcal/h)	(W/W)	(kcal/h)
Energy-optimized	PLE5K	1019E100															
	TL54-80K.3	10204438	19	29	57	75	96				42	0.90	0.99	57	49	1.18	
	TL54-80K.3	10204438	28	40	73	94	119				55	1.00	1.06	74	65	1.30	
	TL55-70K.3	10204638	36	50	89	114	144				68	1.02	1.06	91	79	1.32	
	TL54-80K.3	10204738	45	61	105	134	168				81	1.02	1.06	106	94	1.31	
	TL55-70K.3	10204838	53	71	122	155	194				94	1.02	1.07	126	108	1.32	1.14
	TL55-70K.3	10204938	62	83	143	181	228				110	1.03	1.08	147	126	1.33	1.14
	TL55-70K.3	10204038									130	1.04	1.08	172	148	1.35	1.15
	NL54-80K.4	10204000	64	84	141	179	223				110	1.18	1.22	147	127	1.51	1.30
	NL54-80K.4	10204067	74	96	164	207	257				128	1.19	1.23	170	151	1.51	1.30
	NL54-80K.4	10204052	82	108	184	232	290				143	1.19	1.22	191	165	1.52	1.31
	NL54-80K.4	10204059	99	137	217	274	340				170	1.18	1.23	226	194	1.50	1.29
NL54-80K.4	10204068	116	146	243	307	382				190	1.20	1.25	253	213	1.53	1.32	
High Energy-optimized	TL54-80K.3	10204442	19	29	57	74	95				42	0.96	0.99	57	49	1.26	1.08
	TL54-80K.3	10204542	28	40	73	94	119				55	1.04	1.06	74	65	1.35	1.16
	TL55-70K.3	10204642	36	51	89	114	144				68	1.03	1.06	91	79	1.33	1.15
	TL55-70K.3	10204742	46	62	106	135	170				82	1.10	1.14	110	94	1.42	1.22
	TL57-80K.3	10204842	53	71	122	155	194				94	1.09	1.14	126	108	1.41	1.22
	TL57-70K.3	10204942	65	86	144	182	227				112	1.12	1.16	149	126	1.44	1.24
	TL60K.3	10204447	21	32	59	76	95				45	1.15***		60	52		
	TL60K.3	10204547	36	52	90	116	146				57	1.24***		76	65		
	TL63-70K.3	10204647	37	52	91	115	143				70	1.28***		83	80		
	TL63-70K.3	10204747	46	63	106	133	162				83	1.30***		110	95		
	TL67-80K.3	10204847	55	75	125	157	195				96	1.32***		130	112		
	TL67-70K.3	10204947	65	88	146	184	227				115	1.33***		152	131		
	NL54-80K.4	10204074	60	83	144	182	227				111	1.35		148	127		
	NL54-80K.4	10204071	74	100	169	215	269				131	1.36		174	150		
	NL54-80K.4	10204084	84	112	189	240	300				147	1.36		195	168		
	NL54-80K.4	10204083	98	133	223	282	350				174	1.36		231	199		
	NL54-80K.4	10204081	110	147	249	317	397				193	1.34		257	221		
	NL54-80K.2	10204010	52	73	130	167	210				99	1.43***		133	115		
NL54-80K.2	10204011	62	85	147	187	234				113	1.49***		151	130			
NL54-80K.2	10204012	75	101	171	217	271				135	1.49***		178	153			
NL54-80K.2	10204071	86	115	192	242	301				150	1.49***		200	172			

Mbsm.pro, compressor, PW3.5VK,

DFV4.0HF, DFV4.5HF, DFV5.5HF,
DFV6.5HF, DFV6.5HF, DFV7.5HF,

Category: compressor

written by mahdi miled | 15 November 2022



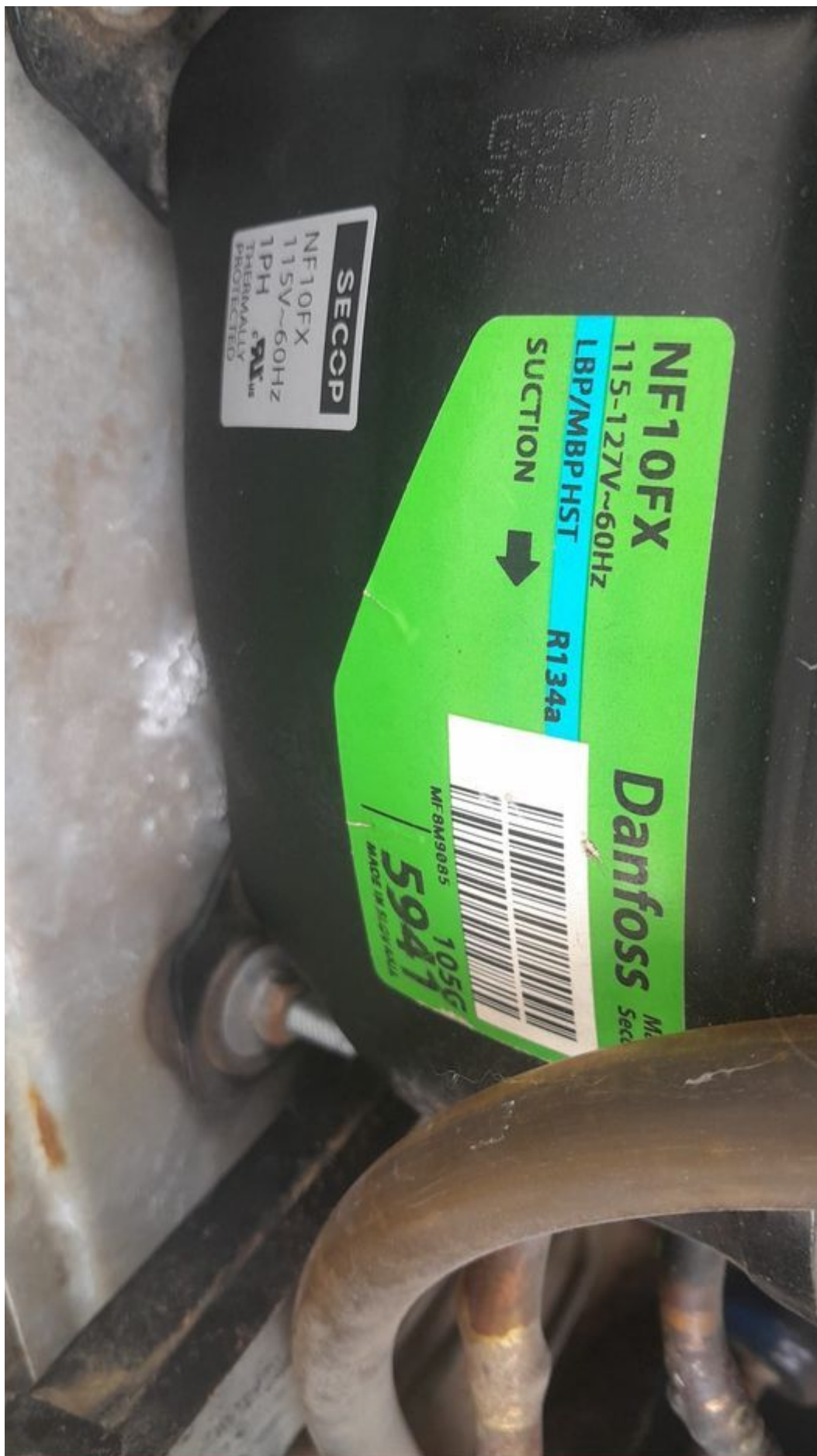
Private Picture Copyright : WWW.MBSM.PRO

Mbsm.pro, compressor, PW3.5VK, DFV4.0HF, DFV4.5HF, DFV5.5HF, DFV6.5HF, DFV6.5HF,
DFV7.5HF,

Mbsm.pro, Compressor, nf10fx,
Danfoss, 1/3 hp, LBP, MBP, 1046 btu,
115 v

Category: compressor

written by Jamila | 15 November 2022



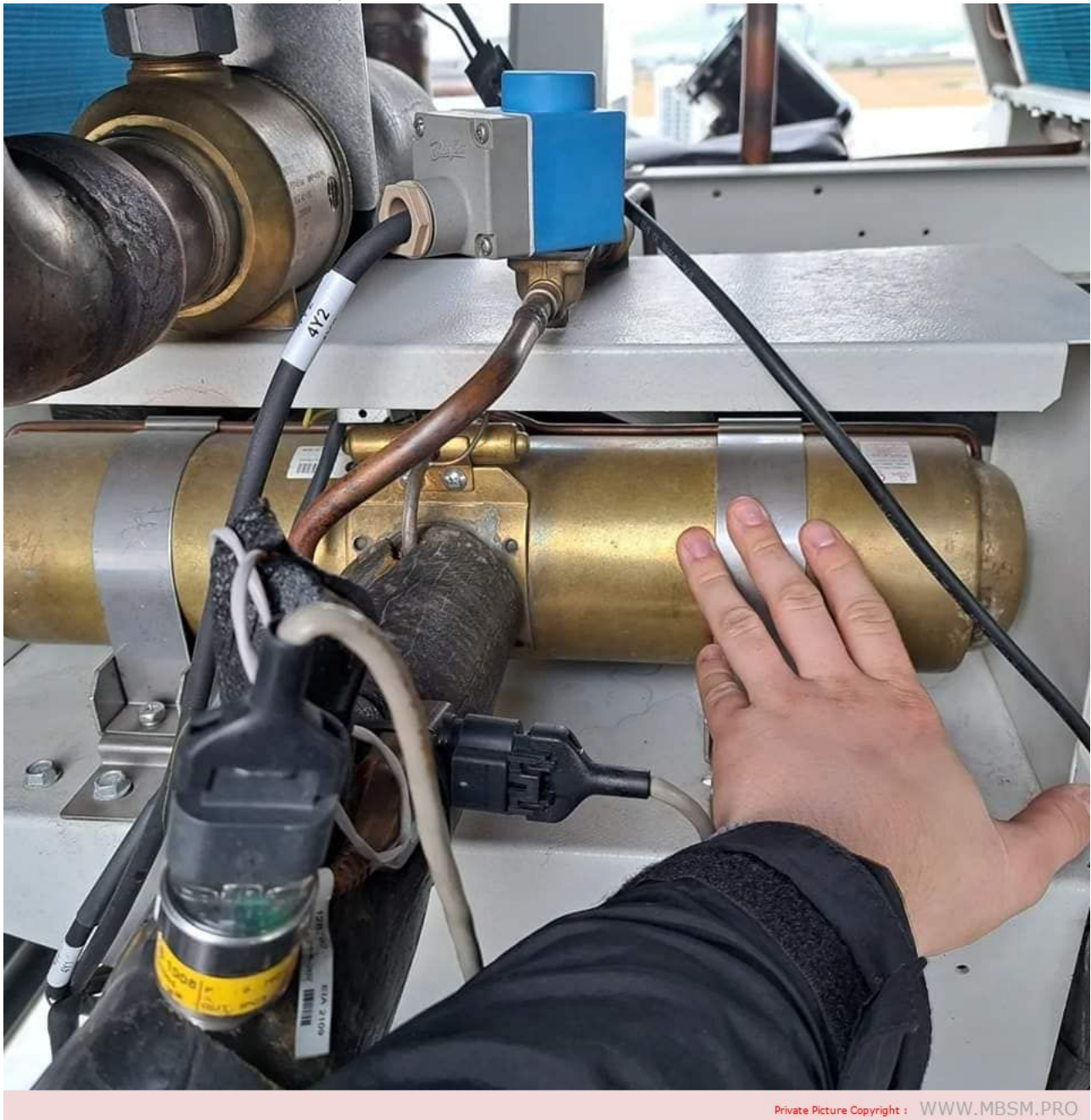
Private Picture Copyright : WWW.MBSM.PRO

Mbsm.pro, Compressor, nf10fx, Danfoss, 1/3 hp, LBP, MBP, 1046 btu, 115 v

Mbsm.pro, Picture, reversing valve

Category: Pictures

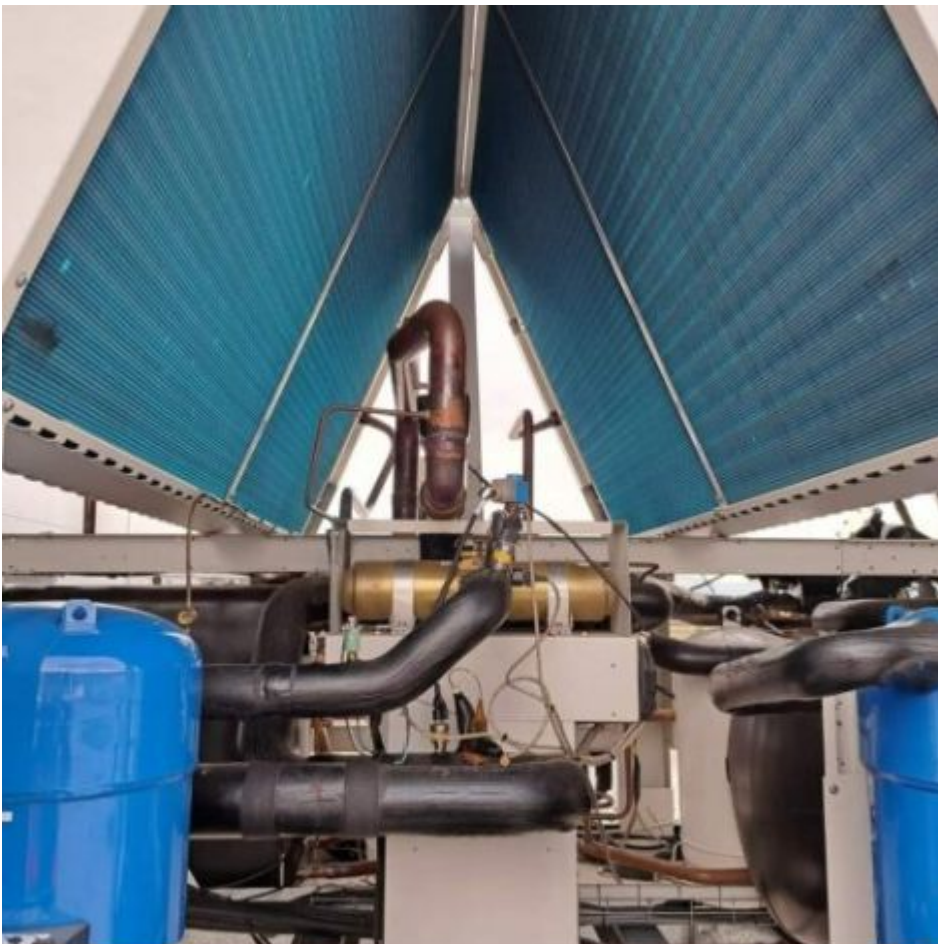
written by mahdi miled | 15 November 2022



Mbsm.pro, Picture, reversing valve



Private Picture Copyright : WWW.MBSM.PRO



Private Picture Copyright : WWW.MBSM.PRO



Private Picture Copyright : WWW.MBSM.PRO

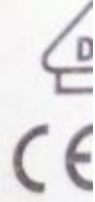
Mbsm.pro, R-410A, Fixed Speed,
Rotary, Compressor, Mitsubishi,
NN21YDAMT, 1.74 hp, 18000 btu, 3 Ph,
380 v

Category: compressor

written by Jamila | 15 November 2022



**SIAM COMPRESSOR
INDUSTRY CO., LTD.**



**REFRIGERANT COMPRESSOR
MODEL NN21YDAMT**

MANUFACTURING DATE 05112016

POWER SOURCE

380-415V 3~ 50Hz

460V 3~ 60Hz

POWER INPUT 1780 W AT 50 Hz

LRA 31/33 A

REFRIGERANT R-410A

OIL 1.20 L

AP 4.15 MPa

SP 15.0 MPa

THERMALLY PROTECTED

MADE IN THAILAND



Mbsm.pro, R-410A, Fixed Speed, Rotary, Compressor, Mitsubishi, NN21YDAMT, 1.74 hp, 18000 btu, 3 Ph, 380 v

Mbsm.pro, Cubigel, GP16TB, hermetic, compressor, 3/8 hp++, 1/2 hp-, HBP, R134a, R1234yf, CSIR,

Category: compressor

written by www.mbsm.pro | 15 November 2022



Private Picture Copyright : WWW.MBSM.PRO

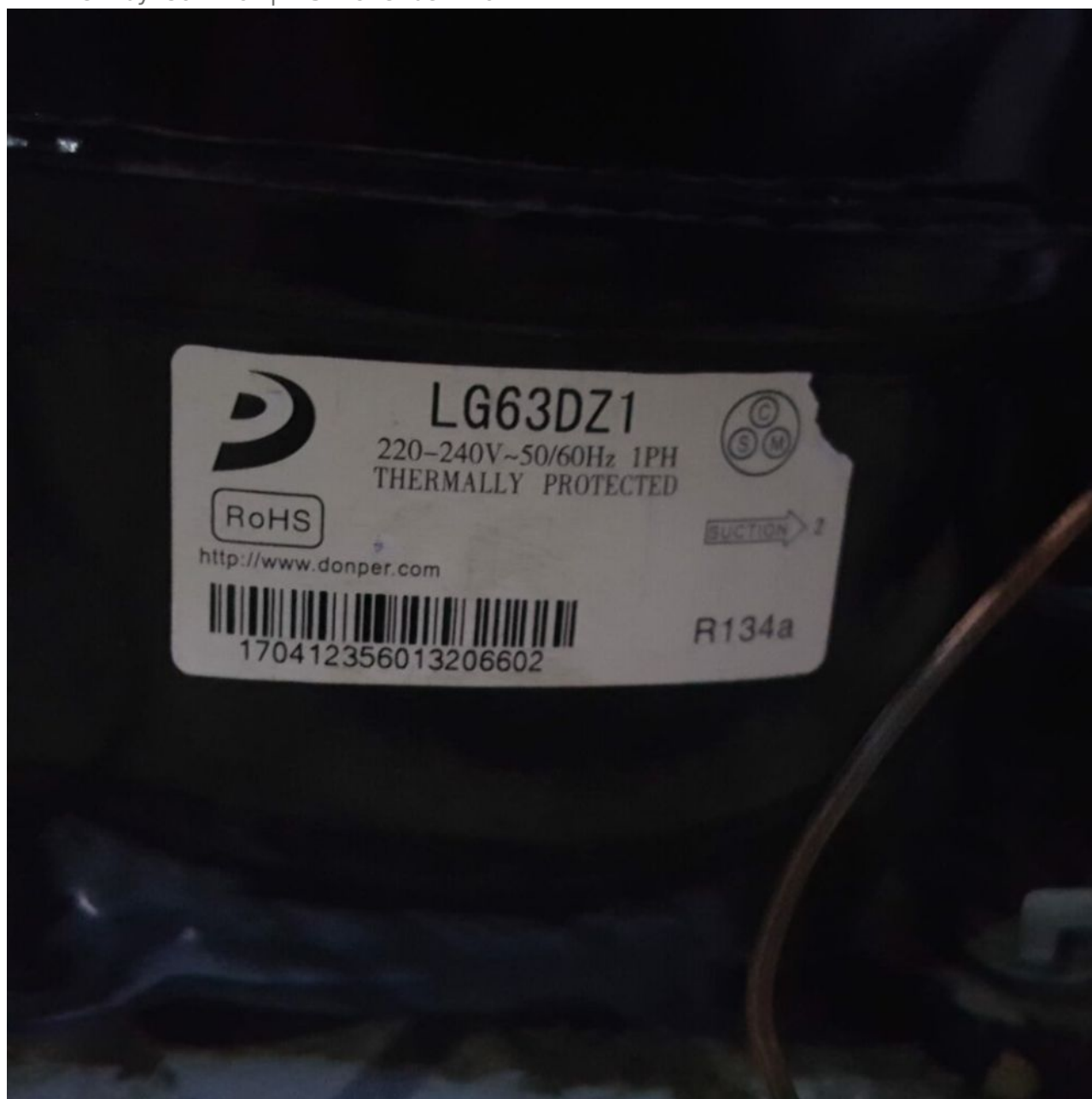
Mbsm.pro, Cubigel, GP16TB, hermetic, compressor, 3/8 hp++, 1/2 hp-, HBP, R134a,

R1234yf, CSIR,

Mbsm.pro, Freezer, 135 L, Ch140,
Mondial for home appliance,
compressor, LG63DZ1, 1/4– hp, 1/5 hp,
r134a, 110 g

Category: compressor, Freezer

written by Jamila | 15 November 2022



Private Picture Copyright : WWW.MBSM.PRO

Mbsm.pro, Freezer, 135 L, Ch140, Mondial for home appliance, compressor,
LG63DZ1, 1/4 hp, r134a, 110 g

Mbsm.pro, Donper, compressor,
aluminum, wire, R600a, R134a,
Exemple, a100cy1, 1/5 hp, 93 w, Lbp,
R600a

Category: compressor

written by Jamila | 15 November 2022



Private Picture Copyright : WWW.MBSM.PRO

Mbsm.pro, Donper, compressor, aluminum, wire, R600a, R134a, Exemple, a100cy1, 1/5 hp, 93 w, Lbp, R600a

Mbsm.pro, File, PDF, Codes and capabilities for LG compressors, exemple ,nd52labm, 1/5 hp, lbp

Category: compressor,Files

written by mahdi miled | 15 November 2022



Private Picture Copyright : WWW.MBSM.PRO

Mbsm.pro, File, PDF, Codes and capabilities for LG compressors, exemple ,nd52labm, 1/5 hp, lbp