

Mbsm.pro , Compresseur frigorifique, Embraco Aspera ,T2178GK , 1Hp ,PIÈCES FRIGO, 404A , 220-240 V 50 Hz

Category: Solutions,Tester ok
written by Jamila | 27 September 2018



PictureS Mbsm Dot Pro : www.mbsm.pro

Mbsm.pro , Compresseur frigorifique, Embraco Aspera ,T2178GK , 1Hp ,PIÈCES FRIGO, 404A , 220-240 V 50 Hz



Select text



GAS R-404A / R-404A GAS



- Compresor hermético / Hermetic compressor
 - Monofásico / Single-phase
 - Voltaje / Voltage: 220V - 50 Hz

- Serie J, equipados con
 with case and valve

BAJA TEMPERATURA / LOW TEMPERATURE

Código Code	Modelos Models	HP HP	cm ³ cm ³	Temperatura de evaporación	
				-25°C	W
14341	NE2125GK	1/3	8.78	300	
20792	NE2134GK	3/8	12.12	420	
20793	T2155GK	1/2	14.50	520	
20796	T2168GK	5/8	17.40	680	
21086	T2178GK	1	20.40	830	
21082	NJ2192GK	3/4	26.20	1020	
20850	NJ2212GK	1 1/4	34.37	1330	

ALTA TEMPERATURA / HIGH TEMPERATURE

Código Code	Modelos Models	HP HP	cm ³ cm ³	Temperatura de evaporación	
				-10°C	-5°C
				W	W
21069	NB6144GK	1/5	4.52	300	380
21070	NB6152GK	1/5	5.02	350	440
36596	NB6165GK	1/4	6.05	430	530
21075	NE9213GK	1/2	12.12	860	1080
20762	T6217GK	5/8	14.50	960	
36557	T6220GK	3/4	17.40	1160	
21076	NJ9226GK	1	21.70	1580	



Mbsm_dot_pro_private_PDF_compresseur-embraco-aspera-t2478gkTélécharger



Private Picture Copyright : WWW.MBSM.PRO

Détails techniques

puissance 1 HP – cylindrée 20,40 cc

220/240V 50HZ

ASPERA

FRIULINOX

Friulinox Armoire réfrigérée AF12 -20, AF12 PA, AF12-14, AF12-14 VTR, AF12-14 VTRP, AF14, AF14 -22 SILVER VTR, AF6-1, AF6-7, AF6-7 VTR, AF7, AF7 -20 VTR, AF7 -22 SILVER VTR, AF7 ICE, AF7 VTR, AF7-14, AG60 GOLD, AG60 H20, AG60 SILVER, AG60 SILVERP, AG60P, AL-EN SUPER, AL-EN1, AL-EN1 SUPER, AL-EN1P, AL-EN2, AL-EN2 SUPER, AL-ENP, AP12-14, AP14, AP6, AP6-12, AP6-7, AP7, AP7-14, AR12-14, AR12-14 VTR, AR14, AR6-12, AR6-12 VTR, AR6-7, AR6-7 VTR, AR7, AR7-14, AR7-14 VTR, AR-EN GOLD, AR-EN SILVER, AR-EN1, AR-EN1 GOLD, AR-EN1 VTR, AR-EN2, AR-ENP, ARF142, ARF212 VTR, ARP142, ARP-EN1, ARP-EN2, ARRF21 VTR, EN GOLD, EN P, EN SILVER, EN1,

EN1 GOLD, EN1 H2O, EN1 H2O SILVER, EN1 SILVER, EN1 VTR, EN2, EN2 H2O

FriulinoxCellulede refroidissement ARP122

FriulinoxVitrineréfrigérée AFP122, AFP142, ARF122

ZANUSSI

ZanussiArmoireréfrigérée ALF110 (110071), ALNF220 (110073), ALF110 (110074), ALF120 (110075), ALNF220 (110079), ADN111 (110757), AKP110 (111000), AKS110 (111001), AKP120 (111002), AKN110 (111009), AKN120 (111010), AKP110UK (111121), AKN110UK (111123), AKNF220 (111127), AKF110UK (111129), AKF110 (111137), AKF120 (111138), ASF110 (112030), ASF110 (112032), AZP2203 (113228), AZP220360 (113229), ALN2203 (113231), AZP13430 (113234), AZF2203 (113236), AZF13430 (113237), MRF601/86 (726059), ETZ601 (726165), ETZ602 (726166), ESQC41F (726171), ESQC41FR (726172), ESQF41F (726173), ETE601 (726178), ETE602 (726179), ETE601L (726184), ETZ601L (726185), RS13RX2F (726321), RS13FX2F (726323), RS13DX2F (726335), RS13PX2F (726459), RS13PX2F6 (726461), RS13P42F (726462), RS13FX42F (726464), RS13DFX2F (726465), RS13R32F (726467), SB1300X2F (726468), RS13PW2F (726475), RS13FW2F (726476), MRF601/86 (726500), RS13FX2F6 (726688), EKZ601 (726890), EKZ602 (726891), EKE601 (726939), EKE602 (726940), EKE601L (726949), EKZ601L (726950), RS13RX2FG (726967), RS13FX2FG (726968), RS13P42F (727128), RS13FX42F (727129), RS13RX4H (727157), RS13FX4H (727158), KLP1300R (728059), KLP1300F (728060), RS13PX2FD (728063), E06C0M1V (728077), E06C1M1V (728078), E06C0D1V (728081), C06FD1G (728173), FGD36 (728271), RH06RD1G (728408), C06FD1G (728415), RS05RD1G (728433), E05N0D1C (728457), E05C0D1C (728458), E06N0D1C (728465), E06N0D2C (728466), E06N0D1V (728467), E06C0D1C (728468), E06C0D2C (728469), E06C0D1V (728470), E06N0D1C (728522), E06C0D1C (728523), KLN1300R (728605), KLP1300R (728606), KEP1300R (728607), KLP1300R (728608), KLP1300F (728609), KEP1300F (728610), KLP1300F (728611), EMVN500 (730005), DVP500V11C (730677), DVP501V11C (730678), DVP600V11C (730683), DVP601V11C (730684), DVP602V11C (730685), DVP600V12C (730686), DVP601V12C (730687), DVP602V12C (730688), DVN600V11C (730701), DVN601V11C (730702), DVN602V11C (730703), DVN600V12C (730704), DVN601V12C (730705), DVN602V12C (730706), DVN500V11C (730721), DVN501V11C (730722), MVP600V11C (730725), MVP601V11C (730726), MVP602V11C (730727), MVP600V12C (730728), MVP601V12C (730729), MVN600V11C (730741), MVN601V11C (730742), MVN600V12C (730743), MVN601V12C (730744), DVP500V11C (730768), MVP501V11C (730769), MVP502V11C (730770), MVN500V11C (730780), MVN501V11C (730781), MLC601V11C (730938), MLC602V11C (730939), DVC500V11C (731242), DVC501V11C (731243), MVC502V11C (731244), DVC600 (731250), DVC601 (731251), MVC602 (731252), DVC600 (731255), DVC601 (731256), MVC600V11C (731282), MVC601V11C (731283), MVC600V12C (731284), MVC601V12C (731285), MVC500V11C (731294), MVC501V11C (731295), DVC602 (731302), DVC602 (731303), DVNN13022C (732073), DVNN13122C (732074), MVNN13022C (732079), MVNN13122C (732080), DVNC13022C (732095), EDVC13122C (732096), MVNC13022C (732103), MVNC13122C (732110), MLC600V11C (732251), MLC601V11C (732255), MLC602V11C (732257), DVP6VP12CC (734079), PDVN901V11C (737216), PDVN901V12C (737217), PDVN907V11C (737218), PDVN907V12C (737219), PDVC901V11C (737220), PDVN907V12C (737221), PDVC907V11C (737222), PDVC907V11C (737223), ILF120 (770508), RVPE061 (771100), RSPE061 (771101), RVPE062 (771102), RVNE061 (771108), RVNE062 (771109), KVPE662 (771115), RPPE061 (771155), ILF110 (771537), ZLNF220 (771539), RD13PX2F (790018), RD13FX2F (790019)

ZanussiCellulede refroidissement ESQC41F (691044), ESQC41FR (691045), ESQF41F (691046), ESQF41FR (691047), ESQF41FR (726144)

ZanussiCongélateurcoffre MRF4808660 (726042), MRF401/86 (726058), MRF240/86 (726060), MRF480/86 (726061)

ZanussiTableréfrigérée STRP1101 (113084), STRP1102 (113088), STRP1601 (113092), TRN224C (113102), TRN224D (113103), TRN224E (113104), STRP1602 (113105), STRP1603 (113106), STRP2201 (113107), STRP2202 (113108), STRP2203 (113109), STRP1101S (113128), STRP1601S (113129), STRP2201S (113130), STRP1602R (113131), TRN132A (113150), TRN132B (113151), TRN132C (113152), TRNA132A (113153), TRNA132B (113154), TRNA132C (113155), TRRN132A (113156), TRRN132B (113157), TRRN132C (113158), TRN183A (113159), TRN183B (113160), TRN183C (113161), TRN183D (113162), TRNA183A (113163), TRNA183B (113164), TRNA183C (113165), TRNA183D (113166), TRRN183A (113167), TRRN183B (113168), TRRN183C (113169), TRRN183D (113170), TRN224A (113171), TRN224B (113172), TRNA224A (113173), TRNA224B (113174), TRRN224A (113175), TRRN224B (113176), TRF132A (113177), TRFA132A (113178), TRRF132A (113179), TRF183A (113180), TRFA183A (113181), TRRF183A (113182), TRN132AE (113183), TRN183AE (113184), TRN224AE (113185), TRF132AE (113186), TRF183AE (113187), STRP1603R (113192), STRP2201R (113193), STRP2202R (113194), STRP2203R (113195), STRP1101R (113196), STRP1102R (113197), STRP1601R (113198), TCGS/1V7T (121856), TCGS/2V7T (121857), TCGS/1VC27 (121858), TCGS/2V2C7 (121859), TCGRS/1V7T (121866), TCGRS/2V7T (121867), TCGRS/1VC2 (121868), TCGRS/2V2 (121869), TCGS2VC27T (121905), RCSN2M2 (726139), RCSN2M12 (726140), RCSN3M3 (726141), RCSN3M22 (726145), RCSN3M14 (726146), RCSN4M4 (726147), RCSN4M32 (726148), RCSN4M24 (726170), RCSN2M2U (726182), RCSN3M3U (726188), RCSN4M4U (726197), RCDR4M24 (726199), RCDR4M16 (726200), RCDR4M08 (726201), RCSN2M2R (726202), RCSN2M12R (726203), RCSN3M3R (726210), RCSN3M22R (726211), RCSN3M14R (726212), RCSN4M4R (726213), RCSN4M32R (726220), RCSN4M24R (726221), RCDR2M20 (726408), RCDR2M12 (726409), RCDR2M20U (726410), RCDR2M12U (726411), RCDR2M04R (726412), RCDR3M22 (726413), RCDR3M0U (726414), RCDR3M22U (726415), RCDE4M40 (726416), RCDR4M32 (726417), RCDR4M40U (726418), RCDR4M32U (726419), RCDFM20UX (726421), RCDF3M30U (726422), RCER2M2 (726423), RCER3M3 (726424), RCER4M4 (726425), RCEF2M2X (726426), RCEF3M3 (726427), RCDR2M20 (726550), RCDR2M12 (726551), RCDR2M04 (726552), RCDR2M20U (726553), RCDR2M12U (726554), RCDR2M04U (726555), RCDR2M20R (726556), RCDR2M12R (726557), RCDR2M04R (726558), RCDR3M30 (726559), RCDR3M22 (726560), RCDR3M14 (726561), RCDR3M06 (726562), RCDR3M0U (726563), RCDR3M22U (726564), RCDR3M14U (726565), RCDR3M06U (726566), RCDR3M30R (726567), RCDR3M22R (726568), RCDR3M14R (726569), RCDR3M06R (726570), RCDR4M40 (726571), RCDR4M32 (726572), RCDR4M40U (726573), RCDR4M32U (726574), RCDR4M40R (726575), RCDR4M32R (726576), RCDF2M20 (726577), RCDFM20U (726578), RCDF2M20R (726579), RCDF3M30 (726580), RCDF3M30U (726581), RCDF3M30R (726582), RCSER2M2 (726583), RCSER3M3 (726584), RCSER4M4 (726585), RCEF2M2 (726586), RCEF3M3 (726587), RCSN2M2T (726668), RCSN3M3T (726669), RCSN4M4T (726670), RCSER2M2U (726682), RCSER3M3U (726683), RCER4M4U (726684), RCEF2M2U (726685), RCEF3M3U (726686), RCSF2M24 (727009), RCSF3M34 (727010), HB2PNTR (727108), HB3PNTR (727109), HB4PNTR (727110), HB2P (728086), HB1P2C12 (728139), HB1P3C (728157), HB4C (728158), HB3P (728207), HB2P2C (728235), EDON590124 (728238), EDON590116 (728239), EDON590108 (728240), HB1P4C (728241), HB6C (728242), HB4P (728243), HB3P2C (728244), HB2P4C (728245), HB8C (728246), HB2PR (728247), HB1P2CR (728248), HB1P3CR (728254), HB4CR (728259), HB3PR (728264), HB2P2CR (728294), HB1P4CR (728295), HB6CR (728296), HB4PR (728297), HB3P2CR (728298), HB2P4CR (728299), HB8CR (728300), HB1P2C (728302), RCHBF1P2C (728304), RCHBF2P2C (728305), S02P200I (728352), S02P120I (728353), S04P300I (728354),

S04P220I (728361), S04P140I (728362), S05P400I (728363), S05P320I (728364), E29N200I (728368), E29N120I (728369), E29N040I (728370), E29N200IA (728371), E29N120IA (728372), E29N040IA (728373), E29N200R (728374), E29N120R (728375), E29N040R (728376), E44N300I (728377), E44N220I (728378), E44N140I (728379), E44N060I (728380), E44N300IA (728381), E44N220IA (728382), E44N140IA (728383), E44N060IA (728384), E44N300R (728385), E44N220R (728386), E44N140R (728387), E44N060R (728388), E59N400I (728389), E59N320I (728390), E59N400IA (728391), E59N320IA (728392), E59N400R (728393), E59N310R (728394), E29C200I (728395), E29C200IA (728396), E29C200R (728397), E44C300I (728398), E44C300IA (728399), E44C300R (728400), S05P240I (728401), ED0N2912SE (728492), ED0N4413SE (728493), ED0N5914SE (728494), EDOC2912SE (728495), EDOC4413SE (728496), HB2PU (728509), HB3PU (728510), HB4PU (728511), RCSF2M2 (728512), RCSF3M3 (728517), RCSF2M12 (728518), RCSF3M22 (728519), S04P220R (728536), S04P140R (728537), S05P400R (728538), S05P320R (728539), S05P240R (728540), HB1P2CRN (728552), HB1P3CRN (728554), HB4CRN (728556), HB2P2CRN (728558), HB1P4CRN (728560), HB6CRN (728562), HB3P2CRN (728564), HB2P4CRN (728566), HB8CRN (728568), HBF2PN (728569), HBF1P2CN (728570), HBF3PN (728571), RCHBF2P2CN (728573), S02P200IA (728585), S04P300IA (728586), S05P400IA (728587), S02P200R (728588), S02P120R (728589), S04P300R (728590), RCHBF2P (728635), RCHBF3P (728636)

...et d'autres dispositifs

– ALPENINOX

T2178GK – ASPERA

01AS0970 – ATEL – ELECTROLUX PROFESSIONAL

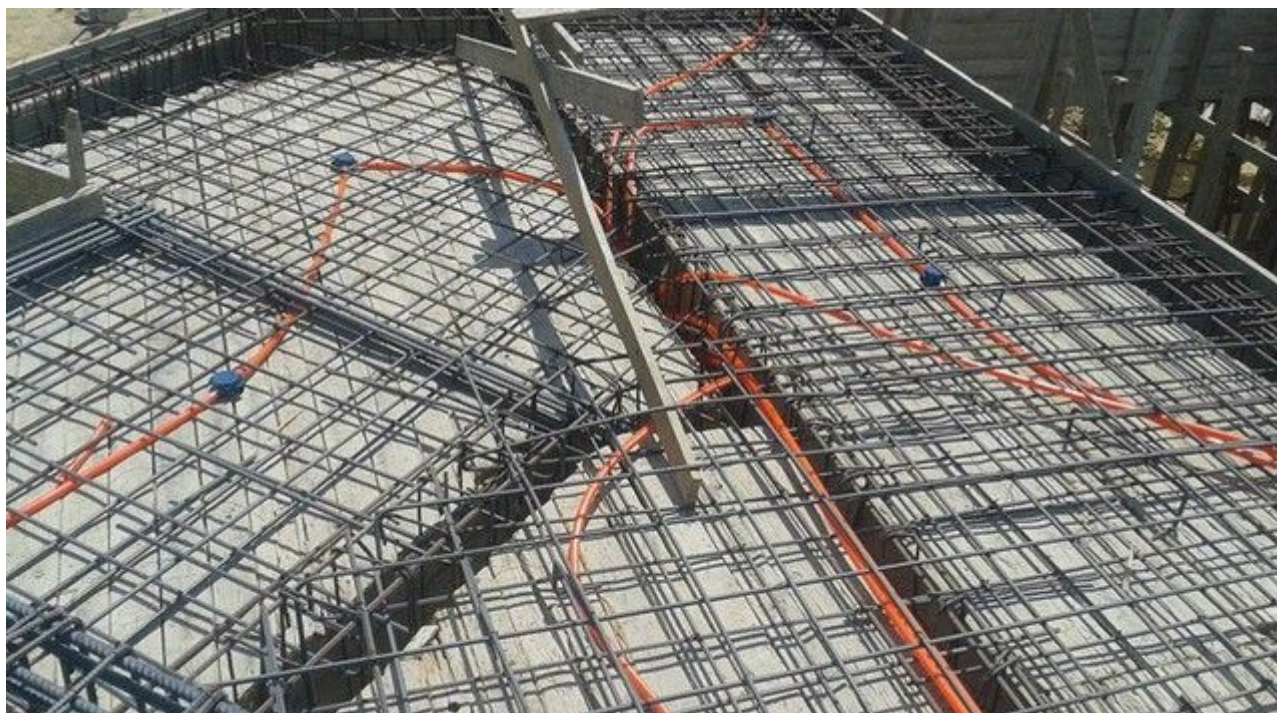
T2178GK – EMBRACO – FRIULINOX – INDESIT – UNIVERBAR – WHIRLPOOL – ZANUSSI

...numéros de fabricant supplémentaires possibles

Mbsm.pro, The risk of extending the electric hoses under the reinforcing steel for ceilings

Category: Pictures

written by Jamila | 27 September 2018



PictureS Mbsm Dot Pro : www.mbsm.pro

Mbsm.pro, The risk of extending the electric hoses under the reinforcing steel for ceilings

**Mbsm.pro, COMPRESOR DANFOSS ,FR7.5B
,1/5 Hp , R-12 ,freezer ,capillary
260 cm , 0.31**

Category: Solutions, Tester ok
written by Jamila | 27 September 2018



PictureS Mbsm Dot Pro : www.mbsm.pro

Mbsm.pro, COMPRESOR DANFOSS ,FR7.5B ,1/5 Hp , R-12 ,freezer ,capillary 260 cm ,
0.31

Mbsm.pro , COMPRESSEUR , SC18CLX.2 ,DANFOSS SECOP, R404A/R507, 5/8HP ,1PH ,Deep Freeze Comptoire, Alimentation 220-240 V 50 Hz

Category: Solutions,Tester ok
written by Jamila | 27 September 2018



PictureS Mbsm Dot Pro : www.mbsm.pro

Mbsm.pro , COMPRESSEUR , SC18CLX.2 ,DANFOSS SECOP, R404A/R507, 5/8HP ,1PH ,Deep Freeze Comptoire, Alimentation 220-240 V 50 Hz

نصائح لمتعلمي السياقة حول التوقف والوقوف وأضواء السيارة

Category: News
written by Jamila | 27 September 2018



PictureS Mbsm Dot Pro : www.mbsm.pro

نصائح لمتعلمي السياقة حول التوقف والوقوف وأضواء السيارة

Mbsm.pro , Qb91c19gax5 , 1/4 hp, qb110c21rpx5, 1/3 hp, Panasonic ,Compressor cooling ,1Ph ,220V

Category: Solutions,Tester ok
written by Jamila | 27 September 2018



Mbsm.pro , Qb91c19gax5 ,Panasonic ,Compressor cooling , 1/3HP ,236W ,1Ph ,220V

Mbsm.pro, conséquence , de mal fixer ,un chauffe bain électrique 100L

Category: Solutions,Tester ok
written by Jamila | 27 September 2018



1. Il peut arriver que les fixations du nouveau chauffe-eau correspondent à celles de l'ancien, mais c'est assez rare.
Le plus souvent, vous devrez prendre les mesures des points d'accrochage du ballon, en fonction de la hauteur désirée. Un gabarit de perçage, souvent fourni par le fabricant, facilite le travail.

Mbsm.pro , Electrodesionisation EDI, Eau ne conduit pas le courant

Category: Technologie

written by Jamila | 27 September 2018



PictureS Mbsm Dot Pro : www.mbsm.pro

La production d'eau de haute pureté a généralement utilisé une combinaison de procédés de séparation par membrane et d'échange d'ion

mbsm.pro, COMPRESSEUR, GY75AA ,R134 , 1/5 HP

Category: Technologie, Tester ok
written by Jamila | 27 September 2018



PictureS Mbsm Dot Pro : www.mbsm.pro

Compressors of the hermetic type from the manufacturer ACC Cubigel Huayi Electrolux ZEM can be found in our online shop category compressors.

Mbsm.pro, Réfrigérateur, remplacement d'un moteur, R600a , par un ,moteur R134a

Category: Solutions, Tester ok
written by Jamila | 27 September 2018

Bonsoir, MBSM.PRO

le remplacement d'un compresseur R600A par un compresseur R134A est possible a condition:

- de rincer le circuit frigorifique a l'azote ou R22 et pas avec l'air comprimé car il contient de l'humidité .
- remplacer bien évidemment le deshydrateur (filtre)
- de charger correctement (ni plus, ni moins).

il est conseillé et préférable de remplacer le compresseur par un équivalent (faute de trouver le même), fonctionnant au même gaz!

il faudrait mettre le double de r134a par rapport au r600a ,85/90 grammes, contrôler la pression (0.2 bars de r134a en fonctionnement stabilisé), mais ce n'est pas certain que cela fonctionne bien car le capillaire (longueur et diamètre intérieur) est différent suivant les fluides utilisés car la perte de charge n'est pas la même.

Il faut changer le capillaire

La Température avec le capillaire de r600a ne dépassera 16 degrés Celsius

PictureS Mbsm Dot Pro : www.mbsm.pro

Bonsoir, MBSM.PRO

le remplacement d'un compresseur R600A par un compresseur R134A est possible a condition: