

Un petit projet à réaliser .. Une balançoire haute sécurité pour les enfants

Category: Tester ok

written by www.mbsm.pro | 7 April 2020



Picture5 Mbsm Dot Pro ; www.mbsm.pro

مشروع صغير للتنفيذ .. أرجوحة أطفال عالية السلامة

A small project for implementation .. A high-safety swing for children



























Erreur de maintenance chauffe eau solaire

Category: Solutions

written by www.mbsm.pro | 7 April 2020



PictureS Mbsm Dot Pro : www.mbsm.pro

خطأ صيانة سخان المياه بالطاقة الشمسية

Solar water heater maintenance error











Picture5 Mbsm Dot Pro : www.mbsm.pro

Erreur de montage et démontage panneau solaire

Category: Solutions

written by www.mbsm.pro | 7 April 2020



Picture5 Mbsm Dot Pro : www.mbsm.pro

Solar panel mounting and dismounting error
خطأ في تركيب الألواح الشمسية وتفكيكها













Cosse et Fiche plat

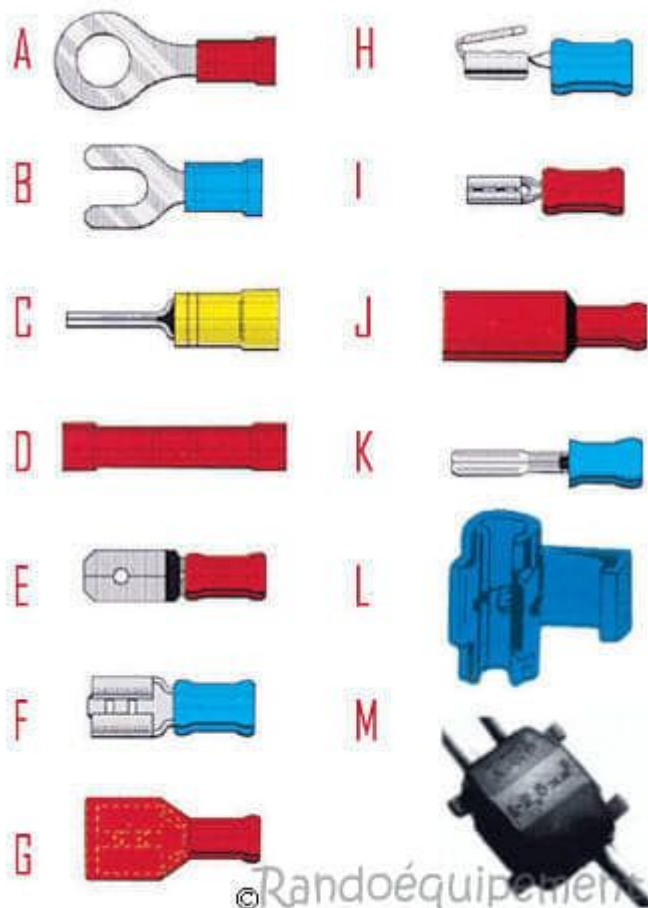
Category: Technologie

written by www.mbsm.pro | 7 April 2020



www.mbsm.pro

On trouve également sur le marché des **cosses** pour batterie qui diffèrent selon leur surface de contact avec la batterie. Dans cette catégorie d'accessoires de connexion, on peut trouver des boîtes de dérivation, du ruban adhésif ou des bornes et des dominos.



© Randoéquipement

PictureS Mbsm Dot Pro : www.mbsm.pro



PictureS Mbsm Dot Pro : www.mbsm.pro



PictureS Mbsm Dot Pro : www.mbsm.pro



Mbsm Dot Pro : www.mbsm.pro



Mbsm Dot Pro : www.mbsm.pro



PictureS Mbsm Dot Pro : www.mbsm.pro



PictureS Mbsm Dot Pro : www.mbsm.pro



PictureS Mbsm Dot Pro : www.mbsm.pro



PictureS Mbsm Dot Pro : www.mbsm.pro



Mbsm Dot Pro : www.mbsm.pro



Mbsm Dot Pro : www.mbsm.pro

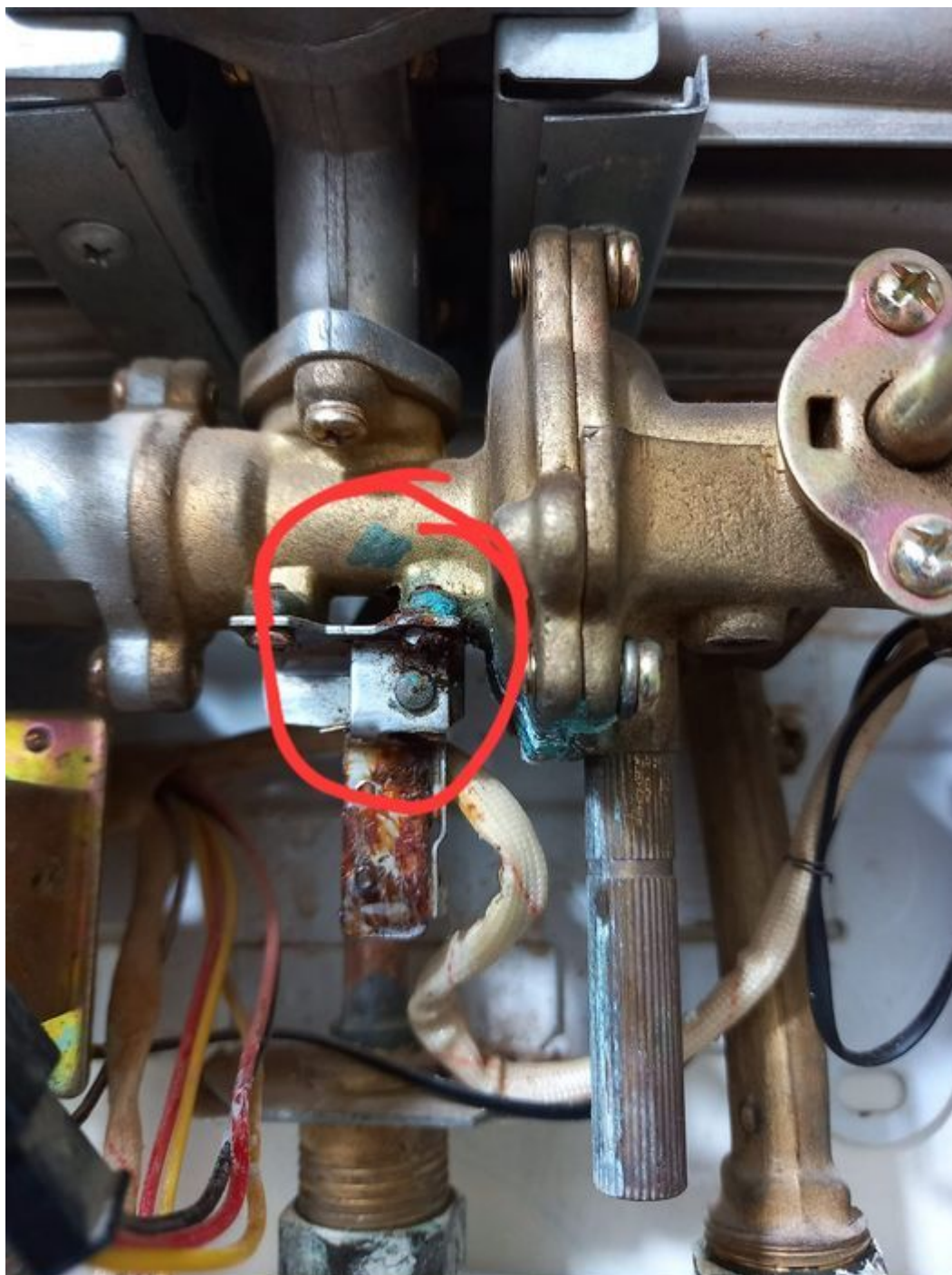


PictureS Mbsm Dot Pro : www.mbsm.pro

Core Mécanique du chauffe-eau Électronique 10 litre

Category: Technologie

written by www.mbsm.pro | 7 April 2020



Private Picture Copyright : WWW.MBSM.PRO

Core Mécanique du chauffe-eau Électronique 10 litre

Compressor ,TECUMSEH 1/4HP ,THG1374YS, R134A ,tm271-ms-393

Category: Technologie,Tester ok
written by www.mbsm.pro | 7 April 2020



Picture5 Mbsm Dot Pro : www.mbsm.pro

Compressor ,TECUMSEH 1/4HP ,THG1374YS, R134A ,tm271-ms-393

Compressors , LG ,MA62LBJG ,1/5 HP, Gaz R134A

Category: Technologie,Tester ok
written by www.mbsm.pro | 7 April 2020



R 134a

RoHS



LG

MA62LBJG

1PH 220-240V 50Hz

THERMALLY PROTECTED
Made by LG Electronics



CM62705NL063027DL

| Capillary | Ampair | Wattage | Codes | Hp Power |
|-----------|--------|---------|-----------|----------|
| 0.028 | 0.75 | 63 | NS36LAEG | 1\10 |
| 0.033 | 0.81 | 77 | MSA43LBEG | 1\8 |
| 0.033 | 1.12 | 116 | MA53LAEG | 1\6 |
| 0.033 | 1.12 | 142 | MA57LBEG | 1\6+ |
| 0.036 | 1.35 | 160 | MA62LCEG | 1\5 |
| 0.040 | 1.35 | 174 | MA69LCEG | 1\5+ |
| 0.040 | 1.4 | 200 | MA72LCEG | 1\4 |
| 0.042 | 1.6 | 210 | MA88LCEG | 1\3 |
| 0.042 | 1.6 | 279 | MA98LAEM | 1\3+ |

Private Picture Copyright : WWW.MBSM.PRO

LG air compressor for refrigerators MA62LAEP uses voltage 220V (220V mini air compressor), at 50Hz, 180W (174W)-cooling capacity using motor Lg kx62laeg refrigerator compressor

Capacité de refroidissement: 596 Btu (0,234 HP)

Source d'alimentation: 220V, 1Pha, 50Hz

Réfrigérant: Gaz R134A

Origine: Chine

Description du produit

Frozen Joint Stock Company est spécialisée dans la fourniture de compresseurs LG, la distribution de compresseurs LG et l'installation de compresseurs LG pour le stockage à froid, les réfrigérateurs, les armoires de stockage, les climatiseurs, les ensembles de compresseurs à condenseur, l'assurance qualité. Qualité et meilleur prix.

Le compresseur LG MA62LAEP est un mini compresseur à piston de **220 V** , conçu pour un fonctionnement compact et silencieux, avec le couple le plus élevé (HST) pour aider la machine à fonctionner efficacement et à réduire le bruit. Capacité de réfrigération de 0,15 HP, adaptée aux réfrigérateurs, armoires de stockage, chambre froide. **Le compresseur LG MA62LAEP** utilise du gaz réfrigérant R134A, fabriqué en Inde, avec des certificats CO et CQ complets pour l'assurance qualité.

Spécifications du **compresseur LG MA62LAEP**

| Modèle | | MA62LAEP |
|-----------------------------|----------|------------------|
| | HP | 0,234 |
| Capacité de refroidissement | W | 174 |
| | Btu / h | 596 |
| COP | w / w | 1,3 |
| EER | Btu / WH | 4.44 |
| Source d'alimentation | | 220V, 1Pha, 50Hz |
| Débit d'aspiration | cc | 6.2 |
| Le volume | Kg | 9.2 |
| Réfrigérant | | Gaz R134 |

Fabriqué en

La Chine

Vous cherchez à acheter des **compresseurs LG MA62LAEP** , en plus des compresseurs, nous fournissons et distribuons également des produits, équipements et fournitures de réfrigération, y compris **des unités intérieures** , des unités extérieures industrielles, du gaz réfrigéré, des tuyaux en cuivre, de l'isolation isolation, leds de stockage à froid, stores de chambre froide et accessoires de porte de chambre froide, y compris charnières de porte de chambre froide, joints de porte de chambre froide, et composants de porte de chambre froide, salles blanches, etc.



R 134a

RoHS



LG

MA62LBJG

1PH 220-240V 50Hz

THERMALLY PROTECTED
Made by LG Electronics



CM62705NL063027DL



Private Picture Copyright : WWW.MBSM.PRO

Mbsm_dot_pro_private_PDF_MA62LBJG-Refrigerator_Compressor_151207Télécharger



MA 69 L A E G

Series name

MA
MB
MC
MQ

Displacement

Ex) 69 = 6.9cc/rev.

Application category

L : R134a, LBP
H : R134a, HBP
N : R600a, LBP

Improvement order

A
B
C
D
E
F
H,K,J,M,N - AL-Wire

Motor type

G : RSIR, PTC
F : CSIR, PTC
M : RSCR, PT
H : CSR, PTC
P : CSIR, RELAY

Rated voltage & Frequency

| | |
|-------------------|-------------------|
| A : 110V 50/60Hz | P : 110V 50Hz |
| B : 220V 50/60Hz | Q : 110-115V 60Hz |
| C : 115V 60Hz | S : 200-220V 50Hz |
| D : 220V 60Hz | 200V 60Hz |
| E : 220-240V 50Hz | T : 220-240V 50Hz |
| F : 127V 60Hz | 220V 60Hz |
| J : 220V 50Hz | U : 110-127V 60Hz |
| K : 110V 60Hz | |



Private Picture Copyright : WWW.MBSM.PRO

COMPRESSEUR ZEL , 200w , HDL200A, R600a, LBP , 1/4 hp

Category: Technologie, Tester ok
written by www.mbsm.pro | 7 April 2020



Private Picture Copyright : WWW.MBSM.PRO

| Model | Motor | Disp. | Power | Motor type | Freq. | Cooling capacity | Input power | Input power (RC) | COP | COP (RC) | Run capacitor | Height | Netweight |
|----------|-------|-------|-------|------------|-------|------------------|-------------|------------------|------|----------|---------------|--------|-----------|
| GDL145D | Cu | 4.4 | 1/8 | RSIR/RSCR | 60 | 145 | 94 | 87 | 1.55 | 1.67 | 10 | 161 | 7.3 |
| GDL175D | Cu | 5.3 | 1/6 | RSIR/RSCR | 60 | 175 | 112 | 106 | 1.56 | 1.65 | 10 | 161 | 7.3 |
| GML140A | Al | 4.9 | 1/6 | RSIR | 50 | 140 | 112 | 0 | 1.25 | 0 | 0 | 152 | 6.3 |
| GML160A | Al | 5.7 | 1/6 | RSIR | 50 | 160 | 128 | 0 | 1.25 | 0 | 0 | 161 | 6.9 |
| GML180A | Al | 6.5 | 1/5 | RSIR | 50 | 180 | 144 | 0 | 1.25 | 0 | 0 | 161 | 7.1 |
| GML200A | Al | 7 | 1/5 | RSIR | 50 | 200 | 160 | 0 | 1.25 | 0 | 0 | 164 | 7.3 |
| GML145D | Al | 4.4 | 1/7 | RSIR/RSCR | 60 | 145 | 97 | 92 | 1.5 | 1.57 | 10 | 164 | 7.1 |
| GML175D | Al | 4.9 | 1/6 | RSIR/RSCR | 60 | 175 | 118 | 112 | 1.48 | 1.56 | 10 | 164 | 7.1 |
| GPL175D* | Cu | 4.9 | 1/7 | CSCR | 60 | 175 | | 97 | | 1.8 | 10 | 161 | 7.6 |
| GXL175D | Cu | 4.9 | 1/7 | RSCR | 60 | 175 | | 101 | | 1.73 | 10 | 164 | 7.6 |

PictureS Mbsm Dot Pro : www.mbsm.pro

TECHNICAL CHARACTERISTICS

SCHEME COMPRESSORS

OF

ELECTRIC DIAGRAMS

ASSEMBLY

TECHNICAL SCHEMES

| Model | Motor | Speed range | Displ., cm ³ | Motor type | Freq. hz | Cooling Capacity, w -23.3 °C/(+7.2 °C)* | Input Power, BT | | COP, w/w | | Run Capacitor, µF | Height, mm | Net Weight, kg | Type of cooling, S/F |
|-------------|-------|-------------|-------------------------|------------|----------|---|-----------------|---------|------------|---------|-------------------|------------|----------------|----------------------|
| | | | | | | | without RC | with RC | without RC | with RC | | | | |
| HDL100A | Al | - | 5,7 | RSCR | 50 | 98 | - | 60 | - | 1,64 | 2,5 | 161 | 6,9 | - |
| HDL100A(I) | Cu/Al | - | 5,7 | RSCR | 50 | 98 | - | 57 | - | 1,72 | 2,5 | 164 | 7,2 | - |
| HDL125A | Al | - | 7,0 | RSCR | 50 | 123 | - | 72 | - | 1,70 | 2,5 | 164 | 7,2 | - |
| HDL125A (I) | Cu/Al | - | 7,0 | RSCR | 50 | 123 | - | 69 | - | 1,79 | 2,5 | 164 | 7,2 | - |
| HDL140A | Al | - | 8,0 | RSCR | 50 | 140 | - | 80 | - | 1,74 | 2,5 | 164 | 7,2 | - |
| HDL160A | Al | - | 9,2 | RSCR | 50 | 160 | - | 90 | - | 1,77 | 3 | 164 | 7,2 | - |
| HDL170A | Al | - | 9,5 | RSCR | 50 | 172 | - | 101 | - | 1,70 | 4 | 164 | 7,2 | - |
| HDL190A | Cu/Al | - | 10,5 | RSCR | 50 | 185 | - | 106 | - | 1,75 | 4 | 164 | 7,2 | - |
| HDL200A | Cu/Al | - | 12,0 | RSCR | 50 | 200 | - | 118 | - | 1,70 | 4 | 164 | 7,2 | - |
| HDL80A | Al | - | 4,9 | RSCR | 50 | 80 | - | 49 | - | 1,62 | 2 | 161 | 6,9 | - |
| HML100A | Al | - | 5,7 | RSCR | 50 | 98 | - | 71 | - | 1,39 | 2 | 152 | 6,3 | - |
| HML125A | Al | - | 7,0 | RSCR | 50 | 125 | - | 83 | - | 1,45 | 2 | 152 | 6,3 | - |
| HML140A | Al | - | 8,0 | RSCR | 50 | 140 | - | 90 | - | 1,56 | 3 | 152 | 6,3 | - |
| HML170A | Al | - | 9,5 | RSCR | 50 | 165 | - | 114 | - | 1,45 | 3 | 161 | 6,9 | - |
| HML200A | Al | - | 12,0 | RSCR | 50 | 200 | - | 138 | - | 1,45 | 4 | 164 | 7,2 | - |
| HML80A | Al | - | 4,9 | RSCR | 50 | 80 | - | 55 | - | 1,45 | 2 | 152 | 6,3 | - |
| HPL100A | Cu | - | 5,7 | CSCR | 50 | 100 | - | 51 | - | 1,96 | 2 | 161 | 7,3 | - |
| HPL125A | Cu | - | 7,0 | CSCR | 50 | 125 | - | 64 | - | 1,96 | 2 | 161 | 7,3 | - |
| HPL140A | Cu | - | 8,0 | CSCR | 50 | 145 | - | 74 | - | 1,95 | 2 | 161 | 7,3 | - |
| HXL100A | Cu | - | 5,7 | RSCR | 50 | 98 | - | 52 | - | 1,87 | 2 | 161 | 7,3 | - |
| HXL125A | Cu | - | 7,0 | RSCR | 50 | 123 | - | 65 | - | 1,90 | 2 | 161 | 7,3 | - |
| HXL140A | Cu | - | 8,0 | RSCR | 50 | 140 | - | 73 | - | 1,91 | 2 | 161 | 7,3 | - |
| HXL170A | Cu | - | 9,3 | RSCR | 50 | 175 | - | 93 | - | 1,88 | 2 | 161 | 7,3 | - |
| HXL190A | Cu | - | 10,5 | RSCR | 50 | 190 | - | 103 | - | 1,85 | 3 | 164 | 7,3 | - |
| HXL190A (B) | Cu | - | 12,0 | RSCR | 50 | 200 | - | 108 | - | 1,85 | 3 | 164 | 7,3 | - |
| HXL50A | Cu | - | 4,9 | RSCR | 50 | 53 | - | 31 | - | 1,70 | 1,5 | 164 | 7,3 | - |

PictureS Mbsm Dot Pro : www.mbsm.pro



Private Picture Copyright : WWW.MBSM.PRO

C 58708690

ZEL HDL200A 16-44
220-240V 50Hz
SUCTION >
R602
8 269 0902610 5
ZANUSSI ELETTROMECCANICA COMPRESSOR





PictureS Mbsm Dot Pro : www.mbsm.pro

كباسات ZEL ومواصفاتها مع مقاسات الثلاجات والفریزارات المختلفة

| موديل الثلاجة | الحجم بالقدم 3 | الحجم باللتر | قدرة الضاغط | | | | | | | |
|---|----------------------|-----------------|-------------|-----|----------|-------|------|----------|-----|------|
| | | | R134a | | | R600a | | | | |
| | | | Model | W | HP | Model | W | HP | | |
| LBP كباسات التجميد | | | | | | | | | | |
| Domestic single door  | 4 | 5 | 113 | 160 | GML70G | 72 | 1/12 | HMM70A | 70 | 1/12 |
| | 6 | 7 | 170 | 198 | GML70G | 72 | 1/10 | HMM70A | 70 | 1/10 |
| | 8 | 9 | 226 | 254 | GML90G | 94 | 1/8 | HMM90A | 90 | 1/8 |
| | 9 | 13 | 283 | 370 | GML125G | 125 | 1/6 | HML125AT | 130 | 1/6 |
| Domestic double door  | 9 | 12 | 226 | 340 | GML140AT | 148 | 1/5 | HML140AT | 140 | 1/5 |
| | 13 | 17 | 370 | 481 | GML200AT | 195 | 1/4 | HML200A | 200 | 1/4 |
| | 17 | 22 | 509 | 623 | GTH88AA | 240 | 1/3 | HKD14AA | 240 | 1/3 |
| Upright and chest freezer  | 4 | 6 | 113 | 120 | GML125G | 125 | 1/6 | HML125AT | 130 | 1/6 |
| | 6 | 8 | 198 | 226 | GML140AT | 148 | 1/5 | HML140AT | 140 | 1/5 |
| | 8 | 12 | 254 | 340 | GML200AT | 195 | 1/4 | HML200A | 200 | 1/4 |
| | 12 | 18 | 370 | 509 | GTH88AA | 240 | 1/3 | HKD14AA | 240 | 1/3 |

PictureS Mbsm Dot Pro : www.mbsm.pro

GML70G,
GML90G,
GML125G,
HMM70A,
HMM90A,
HML125AT,
GML140AT
GML200AT,
GTH88AA,
HML140AT,
HML200A,
HKD14AA,
GML125G,
GTH88AA,

GDL145D,
GDL175D,
GML140A,
GML160A,
GML180A,
GML200A,
GML145D,
GML175D,
GPL175D*,
GXL175D,
GXL200D,

R600a**مواصفات قياسات التجميد LBP**

| Model الموديل | Voltage الفولت | Hz التردد | Cooling Capacity سعة التبريد - القدرة التبريدية | | |
|------------------|-------------------|--------------|--|-------|------|
| | | | W | HP | |
| HMM70A | 220 - 240 | 50 | 70 | 0.094 | 1/10 |
| HMM80A | 220 - 240 | 50 | 80 | 0.107 | 1/10 |
| HMM90A | 220 - 240 | 50 | 90 | 0.121 | 1/8 |
| HMM100A | 220 - 240 | 50 | 100 | 0.134 | 1/8 |
| HML100A | 220 - 240 | 50 | 103 | 0.138 | 1/8 |
| HML125A | 220 - 240 | 50 | 121 | 0.162 | 1/6 |
| HML125AT | 220 - 240 | 50 | 130 | 0.174 | 1/6 |
| HML140AT | 220 - 240 | 50 | 140 | 0.188 | 1/6 |
| HML155A | 220 - 240 | 50 | 155 | 0.208 | 1/5 |
| HML170AT | 220 - 240 | 50 | 170 | 0.228 | 1/5 |
| HML190A | 220 - 240 | 50 | 190 | 0.255 | 1/4 |
| HML200A | 220 - 240 | 50 | 200 | 0.268 | 1/4 |

R134a**كباسات التجميد LBP**

| Model الموديل | Voltage الفولت | Hz التردد | Cooling Capacity سعة التبريد - القدرة التبريدية | | |
|------------------|-------------------|--------------|--|-------|------|
| | | | W | HP | |
| GML70G | 220 - 240 | 50 - 60 | 72 | 0.097 | 1/12 |
| GML80G | 220 - 240 | 50 - 60 | 80 | 0.107 | 1/10 |
| GML90G | 220 - 240 | 50 - 60 | 94 | 0.126 | 1/8 |
| GML110AT | 220 - 240 | 50 | 113 | 0.151 | 1/7 |
| GML125G | 220 - 240 | 50 - 60 | 122 | 0.164 | 1/6 |
| GML140G | 220 - 240 | 50 - 60 | 136 | 0.182 | 1/6 |
| GML140AT | 220 - 240 | 50 | 148 | 0.198 | 1/5 |
| GML180G | 220 - 240 | 50 - 60 | 162 | 0.217 | 1/5 |
| GML200AT | 220 - 240 | 50 | 195 | 0.261 | 1/4 |
| GTH88AA | 220 - 240 | 50 | 240 | 0.322 | 1/3 |
| GTH93AA | 220 - 240 | 50 | 260 | 0.349 | 1/3 |
| GTM93AA | 220 - 240 | 50 | 280 | 0.375 | 3/8 |
| GTM10AA | 220 - 240 | 50 | 300 | 0.402 | 3/8+ |

PictureS Mbsm Dot Pro : www.mbsm.pro**Lambda/Zeta/Micro**PictureS Mbsm Dot Pro : www.mbsm.pro

Tau



PictureS Mbsm Dot Pro : www.mbsm.pro

كباسات ZEL ومواصفاتها مع مقاسات الثلاجات والفرزيرات المختلفة

| موديل الثلاجة | الحجم بالقدم 3 | الحجم باللتر | قدرة الضاغط | | | | | | | |
|--|-------------------|--------------|-------------|-----|----------|-------|------|----------|-----|------|
| | | | R134a | | | R600a | | | | |
| | | | Model | W | HP | Model | W | HP | | |
| LBP كباسات التجميد | | | | | | | | | | |
| Domestic single door  | 4 | 5 | 113 | 160 | GML70G | 72 | 1/12 | HMM70A | 70 | 1/12 |
| | 6 | 7 | 170 | 198 | GML70G | 72 | 1/10 | HMM70A | 70 | 1/10 |
| | 8 | 9 | 226 | 254 | GML90G | 94 | 1/8 | HMM90A | 90 | 1/8 |
| | 9 | 13 | 283 | 370 | GML125G | 125 | 1/6 | HML125AT | 130 | 1/6 |
| Domestic double door  | 9 | 12 | 226 | 340 | GML140AT | 148 | 1/5 | HML140AT | 140 | 1/5 |
| | 13 | 17 | 370 | 481 | GML200AT | 195 | 1/4 | HML200A | 200 | 1/4 |
| | 17 | 22 | 509 | 623 | GTH88AA | 240 | 1/3 | HKD14AA | 240 | 1/3 |
| Upright and chest freezer  | 4 | 6 | 113 | 120 | GML125G | 125 | 1/6 | HML125AT | 130 | 1/6 |
| | 6 | 8 | 198 | 226 | GML140AT | 148 | 1/5 | HML140AT | 140 | 1/5 |
| | 8 | 12 | 254 | 340 | GML200AT | 195 | 1/4 | HML200A | 200 | 1/4 |
| | 12 | 18 | 370 | 509 | GTH88AA | 240 | 1/3 | HKD14AA | 240 | 1/3 |

PictureS Mbsm Dot Pro : www.mbsm.pro



Variable Speed Range 变频系列

R600a

| 型号 | 电机 | 转速范围 | 排气量 | 电机类型 | 制冷量 | 输入功率 | 性能系数 | 高度 | 重量 | 认证 |
|-------|-------|-------------|-----------------|------------|------------------|-------------|------|--------|------------|---------------|
| Model | Motor | Speed Range | Displ. | Motor Type | Cooling Capacity | Input Power | COP | Height | Net Weight | Certification |
| | | rpm | cm ³ | | w | w | w/w | mm | kg | |

220-240V/50Hz

T系列变频 T Series VSC

| | | | | | | | | | | |
|------------|----|-----------|------|------|--------|--------|------------|-----|-----|-----|
| HKD66FSK | Al | 1400-4000 | 6.6 | PMSM | 45-150 | 26-85 | Up to 1.90 | 163 | 7.1 | |
| HKD75FSK | Al | 1400-4000 | 7.5 | PMSM | 52-170 | 29-96 | Up to 1.90 | 163 | 7.1 | |
| HKD86FSK | Al | 1400-4000 | 8.6 | PMSM | 60-190 | 35-105 | Up to 1.90 | 163 | 7.1 | |
| HKD93FSK | Al | 1400-4000 | 9.3 | PMSM | 70-210 | 40-125 | Up to 1.90 | 163 | 7.1 | |
| HKD10FSK | Al | 1400-4000 | 10.5 | PMSM | 83-235 | 49-132 | Up to 1.90 | 163 | 7.1 | CCC |
| HKD12FSK | Al | 1400-4000 | 11.5 | PMSM | 95-270 | 51-154 | Up to 1.90 | 163 | 7.1 | CCC |
| HKD66FSK I | Cu | 1400-4000 | 6.6 | PMSM | 45-150 | 25-82 | Up to 1.95 | 163 | 8.0 | |
| HKD75FSK I | Cu | 1400-4000 | 7.5 | PMSM | 52-170 | 28-93 | Up to 1.95 | 163 | 8.0 | |
| HKD86FSK I | Cu | 1400-4000 | 8.6 | PMSM | 60-190 | 32-102 | Up to 1.95 | 163 | 8.0 | |
| HKD93FSK I | Cu | 1400-4000 | 9.3 | PMSM | 70-210 | 38-115 | Up to 1.95 | 163 | 8.0 | |
| HKD10FSK I | Cu | 1400-4000 | 10.5 | PMSM | 83-235 | 44-123 | Up to 1.95 | 163 | 8.0 | CCC |
| HKD12FSK I | Cu | 1400-4000 | 11.5 | PMSM | 95-270 | 50-146 | Up to 1.95 | 163 | 8.0 | CCC |

Z系列变频 Z Series VSC

| | | | | | | | | | | |
|-----------|----|-----------|-----|------|--------|--------|------------|-----|-----|---|
| HXZ150FSM | Al | 1200-4200 | 6.5 | PMSM | 42-150 | 23-80 | Up to 1.90 | 145 | 6.9 | - |
| HXZ170FSM | Al | 1200-4200 | 7.0 | PMSM | 50-170 | 26-92 | Up to 1.90 | 145 | 6.9 | - |
| HXZ200FSM | Al | 1200-4200 | 8.6 | PMSM | 56-200 | 30-103 | Up to 1.90 | 145 | 6.9 | - |
| HXZ220FSM | Al | 1200-4200 | 9.2 | PMSM | 68-220 | 36-120 | Up to 1.90 | 145 | 6.9 | - |
| HXZ240FSM | Al | 1200-4200 | 9.5 | PMSM | 75-240 | 39-125 | Up to 1.90 | 145 | 6.9 | - |
| HDZ150FSM | Al | 1200-4200 | 6.5 | PMSM | 42-150 | 25-88 | Up to 1.80 | 145 | 6.3 | - |
| HDZ170FSM | Al | 1200-4200 | 7.0 | PMSM | 50-170 | 27-98 | Up to 1.80 | 145 | 6.3 | - |
| HDZ200FSM | Al | 1200-4200 | 8.6 | PMSM | 56-200 | 30-110 | Up to 1.80 | 145 | 6.3 | - |
| HDZ220FSM | Al | 1200-4200 | 9.2 | PMSM | 68-220 | 40-132 | Up to 1.80 | 145 | 6.3 | - |

Picture5 Mbsm Dot Pro : www.mbsm.pro

Mbsm_dot_pro_private_PDF_catalog_zelTélécharger
COMPRESSEUR ZEL HML170A AU R600A LBP 1/6HP 9.5CM3



REDMI NOTE 9
AI QUAD CAMERA

WHIRLPOOL , COMPRESSEUR R600 ,1/8 HP
, HKK80AA, LBP Compressor, Top
Efficiency , 220-240V 50Hz

Category: Technologie,Tester ok
written by www.mbsm.pro | 7 April 2020





PictureS Mbsm Dot Pro : www.mbsm.pro

WHIRLPOOL , COMPRESSEUR R600 ,1/8 HP , HKK80AA

R600a • 220-240 V • 50 Hz • KAPPA

| Compressor | Code number | Application | CECOMAF Capacity [W] T _c =55°C, T _{liq} =55°C, T _{suc} =32°C Evaporating temperature [°C] | | | | | | CECOMAF | | | | | | ASHRAE Capacity [W] T _c =54.4°C, T _{liq} =32.2°C, T _{suc} =32.2°C Evaporating temperature [°C] | | | | | | | | | | | | | |
|------------|-------------|-------------|--|-------|-----|----------------------------------|-----|-------|--------------------------------|-------|-----|------------------|-----|-------|---|-------|-----|------------------|-----|-------|------------------|-------|-----|-------|--|--|--|--|
| | | | LBP rating point -25°C / 55°C | | | MBP rating point -10°C / 55°C | | | HBP rating point 5°C / 55°C | | | -35 | | -15 | | -5 | | 0 | | 10 | | 15 | | | | | | |
| | | | Cooling capacity | | COP | Cooling capacity | | COP | Cooling capacity | | COP | Cooling capacity | | COP | Cooling capacity | | COP | Cooling capacity | | COP | Cooling capacity | | COP | | | | | |
| | | | [W] | [W/W] | [W] | [W/W] | [W] | [W/W] | [W] | [W/W] | [W] | [W/W] | [W] | [W/W] | [W] | [W/W] | [W] | [W/W] | [W] | [W/W] | [W] | [W/W] | [W] | [W/W] | | | | |
| HMK80AA | 15950000 | LBP | 55 | 170 | | | | | 102 | 1.18 | 211 | 1.68 | | | | | | | | | 67 | 207 | | | | | | |
| HMK95AA | 15460700 | LBP | 67 | 207 | | | | | 125 | 1.20 | 257 | 1.72 | | | | | | | | | 81 | 253 | | | | | | |
| HMK12AA | 16236200 | LBP | 82 | 239 | | | | | 149 | 1.21 | 292 | 1.66 | | | | | | | | | 100 | 291 | | | | | | |
| HTK55AA | 16122700 | LBP | 32 | 119 | | | | | 69 | 1.20 | 150 | 1.79 | | | | | | | | | 39 | 146 | | | | | | |
| HTK70AA | 16106100 | LBP | 44 | 150 | | | | | 87 | 1.26 | 185 | 1.85 | | | | | | | | | 54 | 182 | | | | | | |
| HTK80AA | 16068300 | LBP | 55 | 170 | | | | | 102 | 1.26 | 212 | 1.83 | | | | | | | | | 67 | 207 | | | | | | |
| HTK95AA | 16068200 | LBP | 71 | 207 | | | | | 126 | 1.29 | 258 | 1.82 | | | | | | | | | 86 | 252 | | | | | | |
| HTK12AA | 16111600 | LBP | 82 | 239 | | | | | 149 | 1.29 | 292 | 1.77 | | | | | | | | | 100 | 291 | | | | | | |
| HKK55AA | 16124400 | LBP | 32 | 120 | | | | | 69 | 1.37 | 150 | 2.00 | | | | | | | | | 39 | 146 | | | | | | |
| HKK70AA | 16124500 | LBP | 44 | 148 | | | | | 87 | 1.40 | 186 | 1.98 | | | | | | | | | 54 | 181 | | | | | | |
| HKK80AA | 16072100 | LBP | 55 | 170 | | | | | 102 | 1.40 | 212 | 1.99 | | | | | | | | | 67 | 207 | | | | | | |
| HKK95AA | 16049700 | LBP | 69 | 207 | | | | | 126 | 1.42 | 256 | 1.95 | | | | | | | | | 84 | 252 | | | | | | |
| HKK12AA | 16065900 | LBP | 82 | 239 | | | | | 149 | 1.42 | 292 | 1.93 | | | | | | | | | 100 | 291 | | | | | | |
| HXK55AA | 15650400 | LBP | 36 | 122 | | | | | 72 | 1.45 | 152 | 2.00 | | | | | | | | | 44 | 149 | | | | | | |
| HXK70AA | 15690400 | LBP | 47 | 149 | | | | | 88 | 1.47 | 186 | 2.02 | | | | | | | | | 57 | 181 | | | | | | |
| HXK80AA | 15621800 | LBP | 58 | 173 | | | | | 105 | 1.50 | 214 | 2.05 | | | | | | | | | 71 | 210 | | | | | | |
| HXK95AA | 15592900 | LBP | 73 | 209 | | | | | 129 | 1.51 | 258 | 2.05 | | | | | | | | | 89 | 255 | | | | | | |
| HXK12AA | 15593100 | LBP | 83 | 245 | | | | | 152 | 1.50 | 300 | 2.04 | | | | | | | | | 101 | 299 | | | | | | |
| HZK95AA | 16313100 | LBP | 73 | 208 | | | | | 128 | 1.58 | 257 | 2.15 | | | | | | | | | 89 | 254 | | | | | | |

PictureS Mbsm Dot Pro : www.mbsm.pro

Samsung SD162H-L1U2 Compressor, Rscr, 1/5 Hp, 6.99Cc, MANUFACTURERS, FACTORY, SUPPLIERS FROM CHINA

Category: Technologie, Tester ok
written by www.mbsm.pro | 7 April 2020



SAMSUNG SD162H-L1U2 **H**
200/220V 50Hz
220V 50Hz 9.9 LRA
1PH THERMALLY PROTECTED R-134a
0094CCBJ404308 MADE IN KOREA



PictureS Mbsm Dot Pro : www.mbsm.pro

HP 1/5 HP Samsung SD162C-L1U2

2. Function Specifications Temp Range □ 32□ ~ 40□ Capacity Cubic Feet 7 Climate Class N Max Ambient Temp □ 89.6□ Min Ambient Temp □ 59□ Castors 5" 4EA Shelves 2EA Doors 1EA Exterior Finish Stainless Steel Inte ...

MK 1 62 Q - L 1 U A

① ② ③ ④ ⑤ ⑥ ⑦ ⑧

1) Compressor model identification

| NUMBER | MEANING |
|-------------------------------|--|
| ① Series | CD, SD, MD, SK, MK, HK, MSS, MSA, MSE, ENV, MKV, MSV |
| ② Refrigerant | 1 : R 134a (LBP) 4 : R 600a (LBP) 6 : R 134a (HBP) |
| ③ Displacement (cc/Rev.) x 10 | 24 : 2.40cc, 30 : 2.93cc, 37 : 3.71cc, 43 : 4.38cc, 50 : 5.21cc, 51 : 5.12cc, 52 : 5.21cc, 60 : 6.16cc, 62 : 6.16cc, 70 : 6.99cc, 72 : 7.21cc, 80 : 8.19cc, 82 : 8.19cc, 83 : 8.19cc, 88 : 8.80cc, 90 : 9.07cc, A1 : 10.68cc, A2 : 12.13cc, A3 : 12.52cc, A5 : 15.32cc |
| ④ Rated voltage and frequency | B : 220V ~ 60Hz C : 115V ~ 60Hz D : 115-127V ~ 60Hz E : 100V ~ 50/60Hz G : 220-240V ~ 50Hz, 220V ~ 60Hz H : 200-220V ~ 50Hz, 220V ~ 60Hz K : 200-220V ~ 50Hz P : 127V ~ 60Hz Q : 220-240V ~ 50Hz A : variable for BLDC |
| ⑤ Application | L/R/S : Low Back Pressure H : High Back Pressure |
| ⑥ Cooling type | 0 : Oil cooling 1 : Static 2 : Fan cooling |
| ⑦ Motor type | B/C/X : BLDC S : PTC or Current-CSIR U : PTC-RSCR (Optional RSIR) W : PTC-CSR Y : Current-RSIR Z : PTC-RSIR |
| ⑧ Option | |

2) Serial number

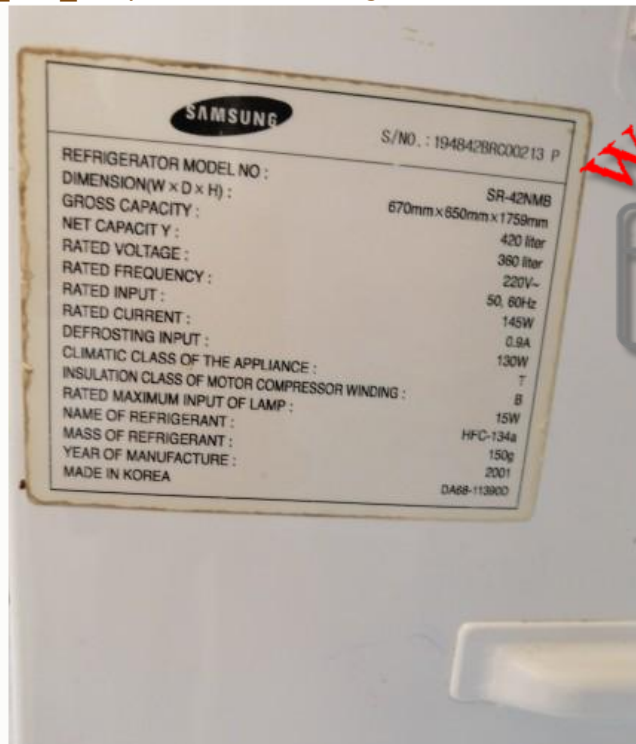
- ① Model code
- ② Production line
- ③ Year : 05 → Y, 06 → L, 07 → P, 08 → Q, 09 → S, 10 → Z, 11 → B, 12 → C, 13 → D, 14 → F
- ④ Month : 1 → Jan, 2 → Feb, ... A → Oct, B → Nov, C → Dec
- ⑤ Serial number



Private Picture Copyright : WWW.MBSM.PRO

Mbsm_dot_pro_private_PDF_Sd162h-11uaTélécharger

Mbsm_dot_pro_private_PDF_compressor-catalogue-2015Télécharger



Private Picture Copyright : WWW.MBSM.PRO

MODEL:
SR-42NMB

POWER:
220V/50,60Hz

COMPRESSOR:
SD162H-L1U2

BOM NAME:
S428GCSWHL/ZAM

SERIAL NO:
194842BRC00213 P



Private Picture Copyright : WWW.MBSM.PRO



Private Picture Copyright : WWW.MBSM.PRO