

# ZMC GL45AN Compressor – R134a, 1/8 HP, LBP

Category: Refrigeration

written by [www.mbsm.pro](http://www.mbsm.pro) | 19 January 2026



Private Picture Copyright : [WWW.MBSM.PRO](http://WWW.MBSM.PRO)

The ZMC GL45AN is a hermetic refrigeration compressor designed for R134a systems in cooling and light freezing applications. With a 1/8 HP motor, LBP operation, and RSIR electrical design, it delivers stable performance, low noise, and high reliability for domestic and light commercial refrigeration equipment.

# Compressor, STU 120 MT, 1/6 hp

Category: Refrigeration

written by [www.mbsm.pro](http://www.mbsm.pro) | 19 January 2026



Private Picture Copyright : [WWW.MBSM.PRO](http://WWW.MBSM.PRO)

TEE STU 120 MT U252-00 is a hermetic reciprocating compressor from Türk Elektrik designed for domestic refrigerators using R600a refrigerant at low back pressure. It operates on 220-240 V, 50 Hz single-phase supply and delivers

around 1/6 hp class cooling capacity, ideal for compact fridges and small freezers.

## Excellent GS66AZ Compressor Technical Specifications, BIG 1/6 HP, 6.6 cm<sup>3</sup>

Category: Refrigeration

written by [www.mbsm.pro](http://www.mbsm.pro) | 19 January 2026



The GS66AZ compressor from Excellent is a workhorse in the domestic and light commercial refrigeration sector, engineered for reliable performance in low-temperature applications such as standard freezers and smaller display units. This hermetic reciprocating unit operates using the widely available R134a refrigerant, making it a highly serviceable component globally.

---

## Defrost Timer Module

Category: Refrigeration

written by [www.mbsm.pro](http://www.mbsm.pro) | 19 January 2026



Picture5 Mbsm Dot Pro : [www.mbsm.pro](http://www.mbsm.pro)

The Universal Electronic Defrost Timer Module is a critical component for modernizing refrigerator repairs. Designed to replace failing mechanical timers and expensive control boards, this solid-state device offers unmatched reliability. Featuring a 220V input and 10A capacity, it ensures precise timing for compressor operation and defrost cycles in various domestic refrigeration brands.

---

## Compressor, Matsushita, D77C18RAX5, 1/4 hp, Panasonic

Category: Refrigeration

written by [www.mbsm.pro](http://www.mbsm.pro) | 19 January 2026



Picture5 Mbsm Dot Pro : [www.mbsm.pro](http://www.mbsm.pro)

The Matsushita D77C18RAX5 is a legendary 1/4 HP refrigerator compressor optimized for R134a refrigerant. Known for its robust RSIR motor and 7.7cc displacement, it delivers 195W of cooling power for domestic freezers and refrigerators. This guide provides full technical data, wiring details, and the best professional cross-reference replacements for modern refrigeration repair.

---

## Huayi HYE69Y63 Compressor 1/5 HP R134a LBP

Category: Refrigeration

written by [www.mbsm.pro](http://www.mbsm.pro) | 19 January 2026



Private Picture Copyright : [WWW.MBSM.PRO](http://WWW.MBSM.PRO)

The Huayi HYE69Y63 is a highly efficient hermetic reciprocating compressor designed for low back pressure applications using R134a refrigerant. With a 1/5 HP rating and dual-frequency compatibility (50/60Hz), this motor is a cornerstone for domestic refrigerators and freezers. This comprehensive guide covers technical datasheets, electrical wiring, and professional replacement strategies for global cooling systems.

---

## Huayi HYB60MGU Compressor 1/7 HP R600a LBP

Category: Refrigeration

written by [www.mbsm.pro](http://www.mbsm.pro) | 19 January 2026



Private Picture Copyright : [WWW.MBSM.PRO](http://WWW.MBSM.PRO)

The Huayi HYB60MGU is a high-efficiency hermetic reciprocating compressor specifically engineered for Low Back Pressure (LBP) applications. Operating on the eco-friendly R600a refrigerant, this 1/7 HP unit is a primary component in modern household refrigerators. This guide provides an in-depth technical analysis, electrical wiring configurations, and reliable replacement alternatives for field engineers.

---

## GMCC PE75H1C Compressor 1/4 HP R134a LBP

Category: Refrigeration

written by [www.mbsm.pro](http://www.mbsm.pro) | 19 January 2026



Private Picture Copyright : [WWW.MBSM.PRO](http://WWW.MBSM.PRO)

The GMCC PE75H1C is a robust hermetic reciprocating compressor engineered for low back pressure applications using R134a refrigerant. Operating at 220-240V 50Hz, this 1/4 HP motor provides a cooling capacity of approximately 185W. This article provides technical datasheets, electrical wiring schemas, and professional cross-reference guides for global refrigeration maintenance and engineering.

---

## TEE NTU 170 MT Compressor 1/4 HP R600a

Category: Refrigeration

written by [www.mbsm.pro](http://www.mbsm.pro) | 19 January 2026



Private Picture Copyright : [WWW.MBSM.PRO](http://WWW.MBSM.PRO)

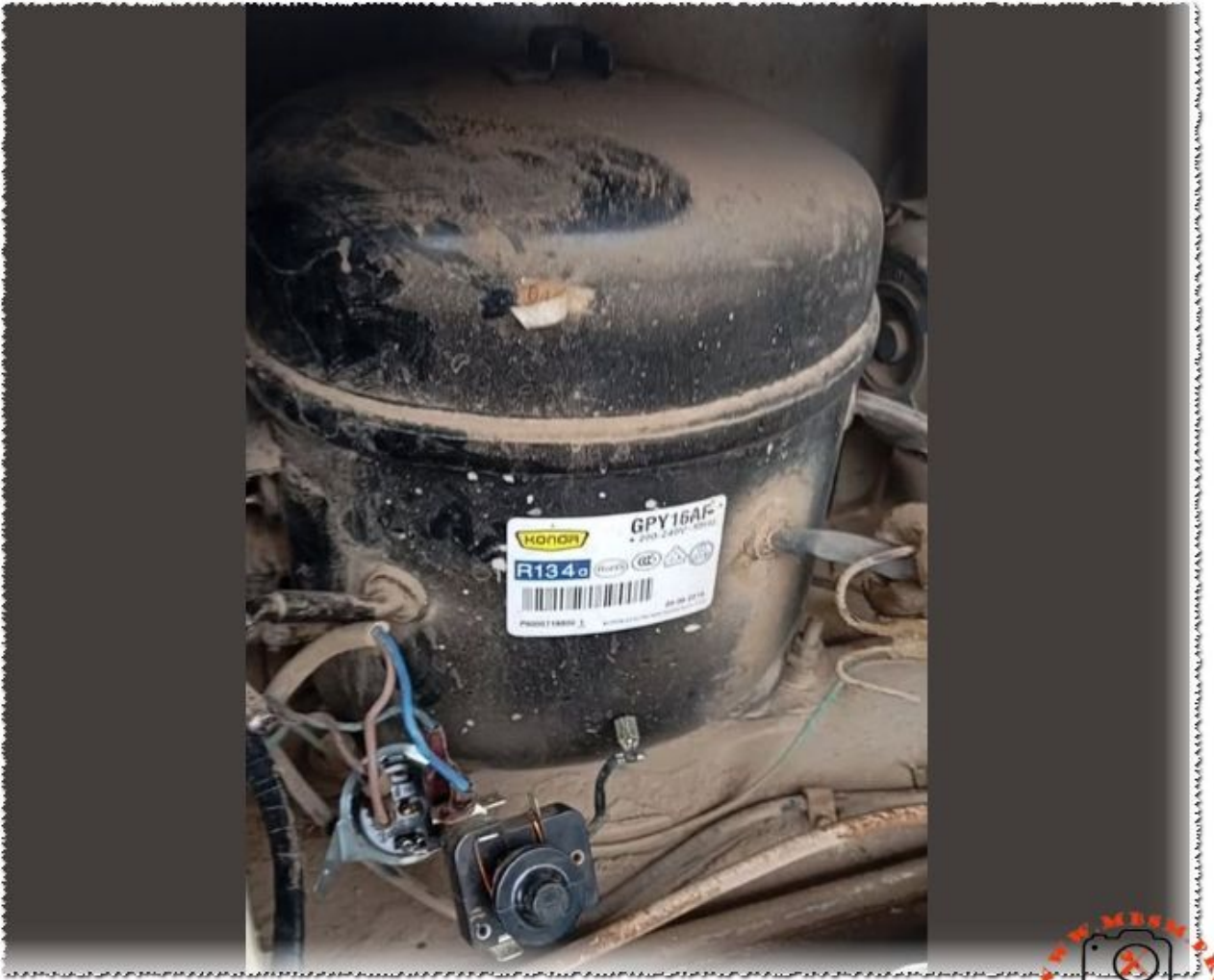
The TEE NTU 170 MT is a high-efficiency hermetic reciprocating compressor designed for low back pressure applications using R600a refrigerant. Known for its reliability in household refrigeration, this unit operates at 220-240V 50Hz. This article explores its technical specs, cooling capacity, and suitable replacements for HVAC technicians and engineers worldwide.

---

## Compressor, Konor, GPY16AF, 1/2 HP, R134a, LBP

Category: Refrigeration

written by [www.mbsm.pro](http://www.mbsm.pro) | 19 January 2026



Private Picture Copyright : [WWW.MBSM.PRO](http://WWW.MBSM.PRO)

The Konor GPY16AF is a robust hermetic reciprocating compressor engineered for low back pressure applications using R134a refrigerant. With a displacement of 16.2 cm<sup>3</sup>, this 1/2 HP unit is a staple in commercial freezers and large refrigerators. This guide provides detailed technical data, wiring diagrams, and professional cross-reference options for field technicians.